

OUNTED IN THE RETURN AIR

H AN INSIDE RADIUS OF 0.5W AT

NECTIONS.
ELECTRICAL SWITCHING IN THIS AREA.

ION BOX). COORDINATE

ION BOX). COORDINATE

CONNECTION. PROVIDE WIRING AS

CONNECTION. PROVIDE WIRING AS

ROVIDE (2) #18 G. THERMISTOR

THE REQUIREMENTS OF ITS
GRAL DUCT COLLAR REFRIGERANT
DUCT SYSTEM TO BE WELDED OR
D 4/M700. CHIPOTLE WILL

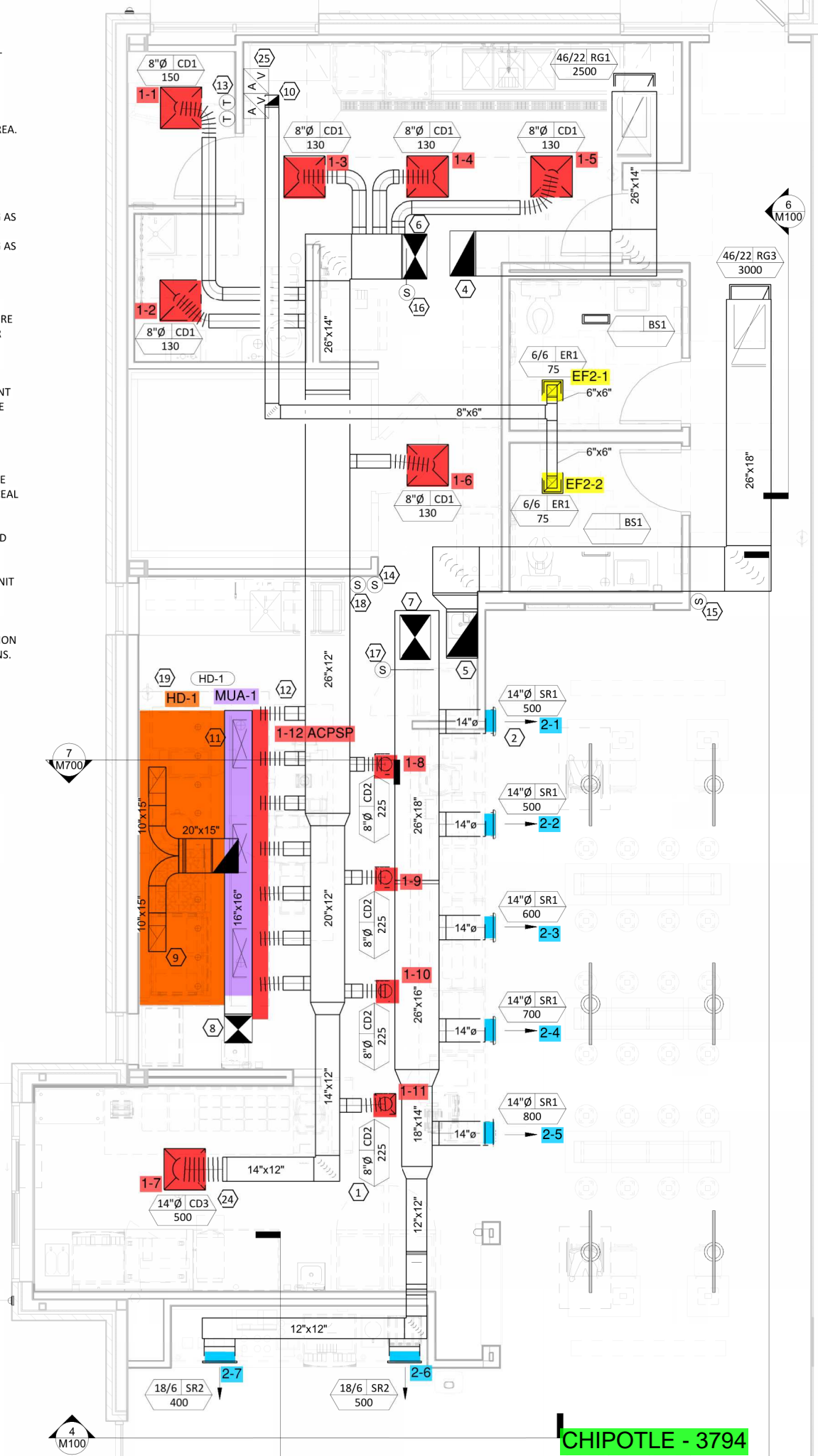
VALVE, SOLENOID VALVE,
G. TRAP AND SLOPE REFRIGERANT
FRIGERANT LINE SET UNDER THE
AL PER THE COOLER

NOID VALVE, TEMPERATURE
LOPE REFRIGERANT LINES PER
ANSI STANDARD 15. INSTALL THE
EXPOSED TO PUBLIC VIEW CONCEAL

VIROGUARD SYSTEM FURNISHED

H SMOKE DETECTOR. MOUNT UNIT

ON INFORMATION. INSTALL UV
LD BE VISIBLE IF OPENED.
EEN WATER HEATER COMBUSTION
COMBUSTION AIR TERMINATIONS.



LINGLE
158 W
LENA
TEL
FAX
LING



COPYRIGHT IS 2011
THIS DRAWING IS AN
AND AS SUCH REMA
CHIPOTLE MEXICAN
USE OF THIS DOCUM
EXTENDED ONLY BY
CHIPOTLE MEXICAN



CHIPOTLE
P
COLUM
TELEPH
INTERNET:

STORE NO.: 41-3794

Issue Record:
10/25/21

Revisions:

CHIPOTLE - 3794

Drawn:
EPK