

GREASE ACCESS DOOR SCHEDULE

MARK	OPENING SIZE	DOOR SIZE	REMARKS
Ⓐ	6H X 10W	8H X 12W	1
1) ACCESS DOOR SHALL BE U.L. 1978 LISTED, REQUIRE NO TOOLS FOR REMOVAL AND BE EQUAL TO DUCTMATE ULTIMATE DOOR II WELD ON TYPE.			

DEMOLITION NOTES

- CONTRACTOR RESPONSIBLE FOR OBTAINING ALL NECESSARY PERMITS AND PAYING ALL APPLICABLE FEES.
- DISPOSAL OF EQUIPMENT AND MATERIALS REQUIRED TO BE REMOVED SHALL BE THE RESPONSIBILITY OF THE CONTRACTOR PERFORMING THE WORK.
- DE-ENERGIZE ALL ELECTRICAL CIRCUITS RELATED TO EQUIPMENT THAT WILL BE MOVED OR REMOVED PRIOR TO STARTING WORK. ROOF PENETRATIONS FOR ELECTRICAL SERVICE TO DEMOLISHED EQUIPMENT SHALL BE REMOVED, CAPPED, AND MADE WATER TIGHT.
- REMOVE ALL AIR DEVICES, DUCTWORK, CONTROLS, AND MECHANICAL EQUIPMENT INCLUDING BUT NOT LIMITED TO FANS, HOODS, ROOF TOP UNITS, AND ROOF TOP EQUIPMENT CURBS.
- DISCONNECT GAS PIPING FROM EXISTING EQUIPMENT. PLUMBING CONTRACTOR WILL REMOVE EXISTING GAS PIPING SYSTEM.
- CONTRACTOR SHALL INDICATE SALVAGE VALUE IN BID FOR EXISTING ROOFTOP UNITS.
- CONTRACTOR SHALL PATCH ROOF AFTER THE REMOVAL OF THE EXISTING MECHANICAL EQUIPMENT. SEE ARCHITECTURAL DRAWINGS FOR ROOF PATCHING REQUIREMENTS.

AIR BALANCE SCHEDULE

AIR TYPE	TOTAL CFM
SUPPLY	13,400
RETURN	9,380
EXHAUST	3,803
OUTSIDE AIR	4,020
BUILDING POSITIVE PRESSURE	217

LEGEND

A-12-400	TYPE - NECK SIZE - CFM	EF#1	EXHAUST FAN #1 (TYP.)
	SPIN-IN FITTING WITH MANUAL BALANCING DAMPER, WITHOUT SCOOP	AC#1	AIR CONDITIONING UNIT #1 (TYP.)
	SPIN-IN HARD DIFFUSER		RETURN/EXHAUST (TYP.)
	REMOTE TEMPERATURE SENSOR		SUPPLY DIFFUSER, SQ FACE (TYP.)
	HUMIDITY SENSOR		PLAN NOTE REFERENCE
	SMOKE DETECTOR		MANUAL VOLUME DAMPER
	STORE "OPEN/CLOSED" SWITCH		ANSUL PULL STATION
	SMOKE DETECTOR ANNUNCIATOR		
12x18	DUCT SIZE (reverse for elevation views) 1ST NUMBER - HORIZONTAL DIMENSION 2ND NUMBER - VERTICAL DIMENSION		DIRECTION OF THROW ON DIFFUSER

KITCHEN DUCT INSTALLATION NOTES

- HOLD DUCT serving AC#1 as high as possible DUE TO LIMITED CLEARANCE.

DINING ROOM DUCT INSTALLATION NOTES

- COORDINATE EXACT LOCATIONS OF SUPPLY AND RETURN DUCTS WITH ELECTRICAL LIGHTING LAYOUT. SEE ELECTRICAL AND ARCHITECTURAL DRAWINGS.
- HOLD DUCT serving AC#2 as high as possible DUE TO LIMITED CLEARANCE.

KEY NOTES

- MOUNT REMOTE SENSOR ON WALL AT 5'-0" AFF AND ROUTE WIRING BACK TO SUNCOAST TEMP CONTROL PANEL.
- CJ#4 MOUNTED INSIDE CABINERY SERVING SCJ PLENUM, SEE DETAIL 2/M2-1.
- BRANCH TAKE-OFFS ARE NOT TO BE LOCATED CLOSER THAN 3'-0" FROM ANY ELBOW INCLUDING THE SUPPLY AIR DROP FROM CURB.
- TRANSITION IN VERTICAL DROP FROM FULL SIZE OF CURB OPENING TO SIZE SHOWN. PROVIDE TURNING VANES IN ELBOW.
- MANUAL PULL STATION FOR HOOD #1.
- MANUAL PULL STATION FOR HOOD #3.
- MOUNT LENNOX HUMIDITY SENSOR ON WALL ABOVE SPACE TEMP SENSOR AND ROUTE WIRING TO UNIT ON ROOF.
- LOCATE A MINIMUM OF 10 FT FROM PARAPETS. SEE DETAIL 3/M3-1 FOR ORIENTATION OF HINGE SIDE OF FAN ON CURB.
- STORE OPEN/CLOSED SWITCH ON WALL AT 55" A.F.F.
- MOUNT COMBINATION TEMP/RH SENSOR ON WALL AT 6'-0" AFF. ROUTE WIRING BACK TO AC#1. SEE DRAWING M4-1.
- extend 46x16 return duct below structure to accommodate (3) 14" start collars.
- Mechanical Contractor TO ADJUST pattern deflectors TO throw STRAIGHT DOWN.
- AIR CURTAIN MOUNTED OVER DOOR HEADER AT 7'-5" AFF TO BOTTOM OF UNIT. LOCATE magnetic contact TYPE MICROSWITCH IN DOOR FRAME ON STRIKE SIDE.
- see elevations on m2-1 for cj fan ducting requirements.
- extend 50x20 return duct below structure to accommodate (3) 14" start collars.
- clearances are tight in this area. install so main as high as possible.

LENNOX SMOKE DETECTOR INSTALLATION NOTES

- MECHANICAL CONTRACTOR SHALL RELOCATE THE FACTORY INSTALLED SUPPLY SIDE SMOKE DETECTOR FROM THE BLOWER SECTION TO THE SUPPLY DUCT DROP ABOVE THE FIRST 90 DEGREE DUCT FITTING.
- THE MECHANICAL CONTRACTOR SHALL SPLICE NEW PLENUM RATED CABLE BETWEEN THE FACTORY SMOKE DETECTOR AND THE FACTORY JACK PLUG. THE NEW WIRING SHALL BE ROUTED THRU THE ROOFTOP UNIT BASEPANEL RACEWAY. SPLICES SHALL BE JOINED WITH CRIMP ON FITTINGS AND HEAT SHRINK JACKETS.

SHEET NOTES

- DUCT SIZES SERVING DIFFUSERS AND GRILLES ARE SAME SIZE AS DIFFUSER OR GRILLE NECK UNLESS NOTED OTHERWISE.

Mark Date By
8 3/21/2012

OWNER REVISIONS

Revisions:
Mark Date By
1 08/12/11

OWNER REVISIONS/
PERMIT COMMENTS

Mark Date By
2 09/14/2011

OWNER REVISIONS

Mark Date By
4 12/06/2011

city permit
comments

Seal

Kurzynske & Associates
CONSULTING ENGINEERS
825 Third Avenue, South
Nashville, Tennessee 37210
Telephone: (615) 255-5203
Fax: (615) 255-5207
Email: mail@kurzynske.com

STORE Name:
Willston Centre
In-Line# 2931

6108 Arlington Blvd.
Falls Church
VA 22044

SHEET TITLE
MECHANICAL
FLOOR PLAN

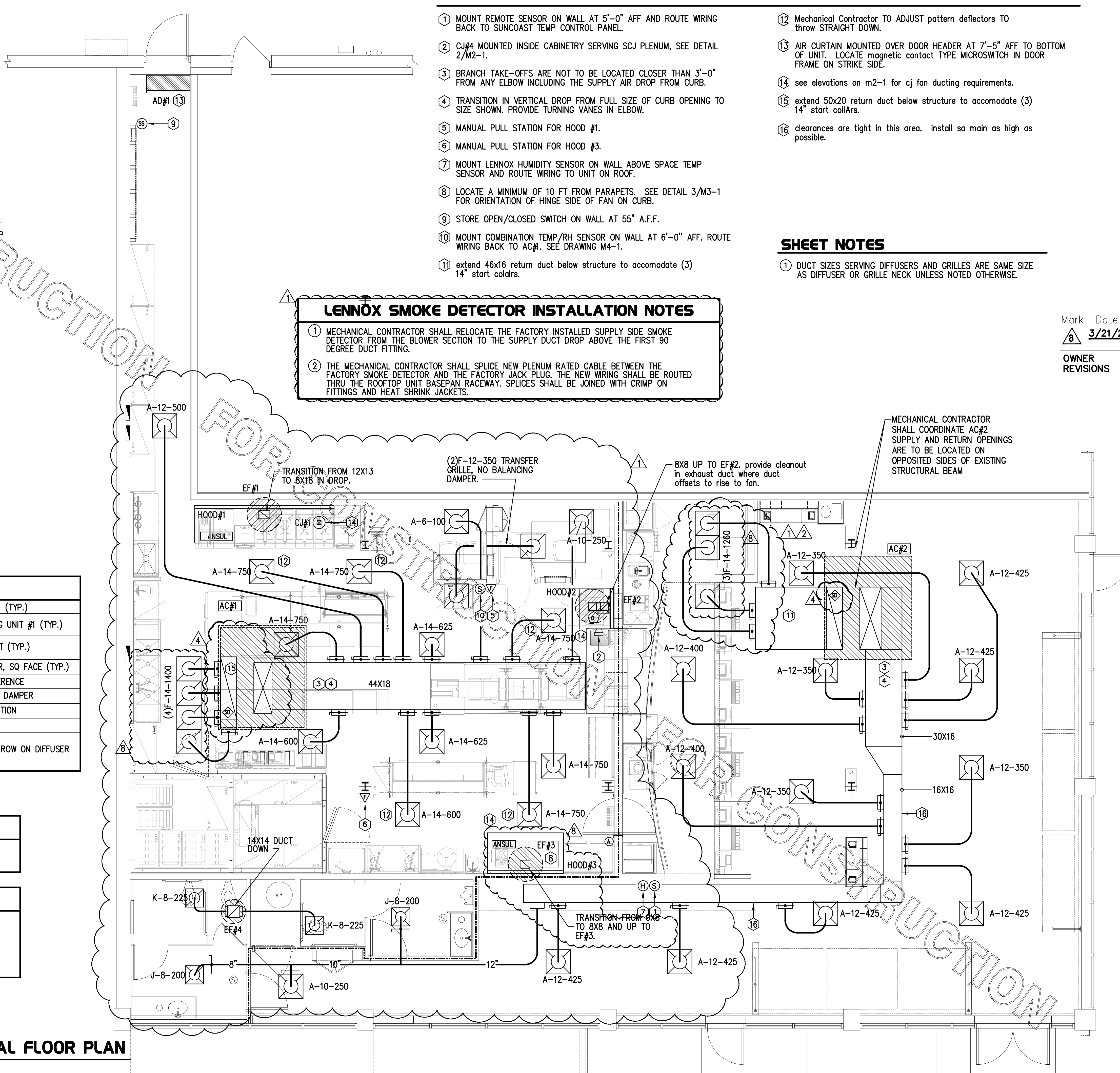
VERSION:
ISSUE DATE: 1-2011

Job No. : 11-119
Store : 2931
Date : 5/26/11
Drawn By : BF
Checked By : MTK

Sheet

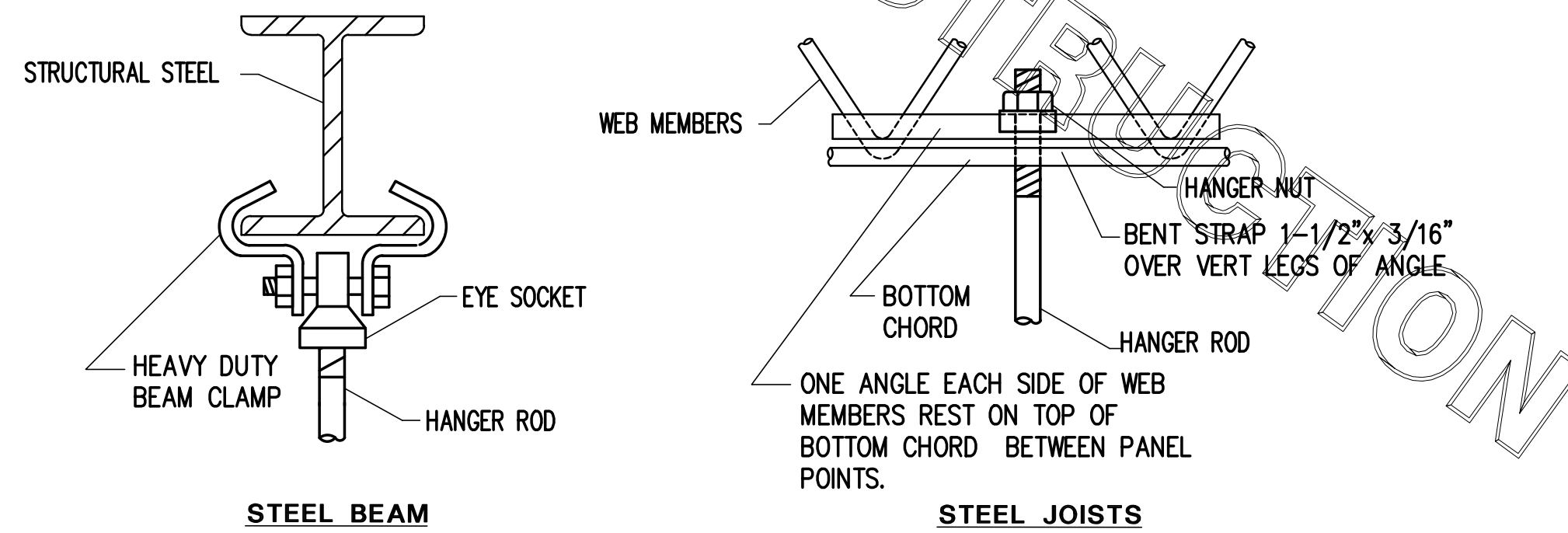
M-11

MECHANICAL FLOOR PLAN
1/4"=1'-0"



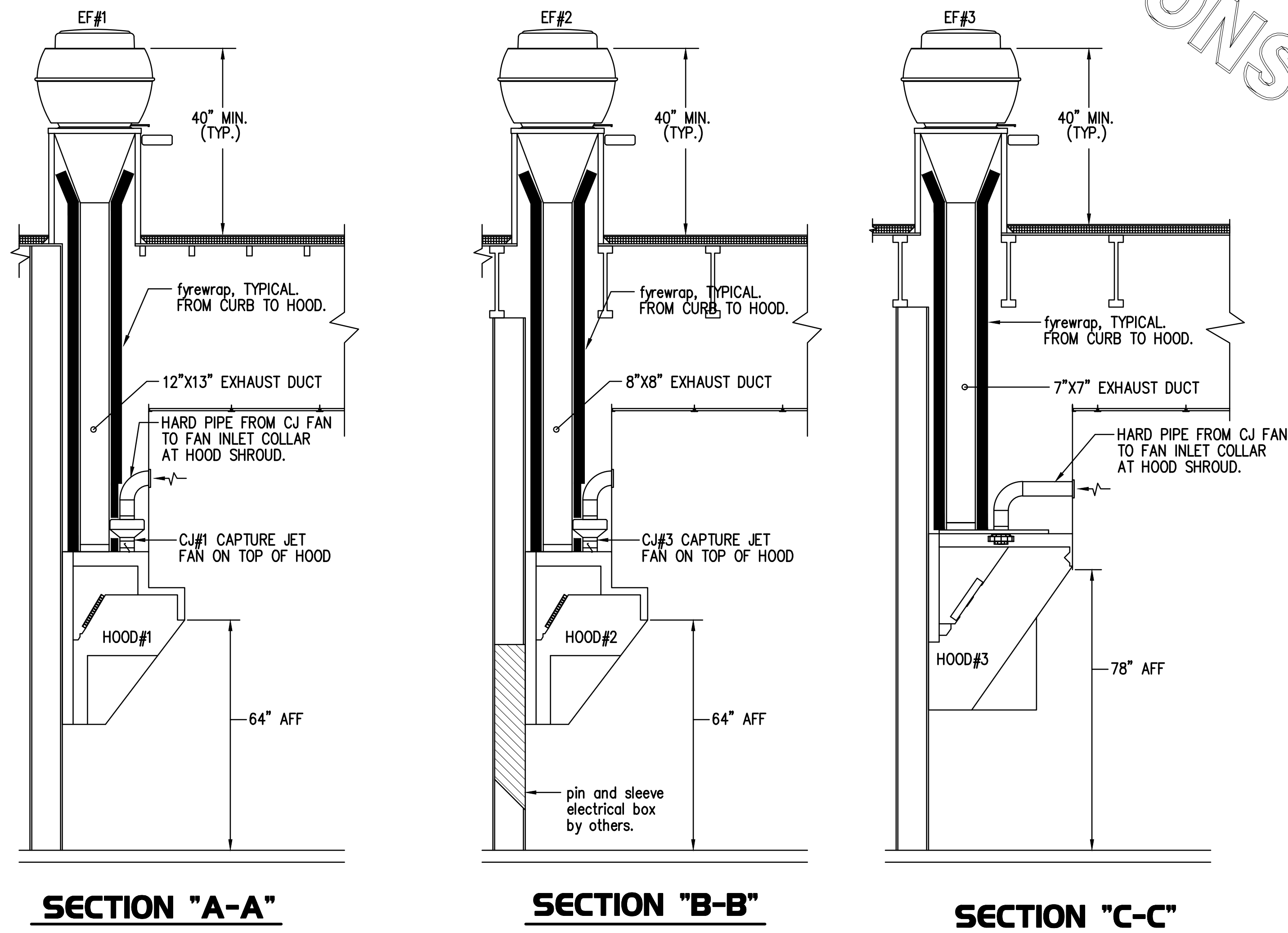
KITCHEN HOOD SYSTEMS NOTES

1. CHICK-FIL-A MAINTAINS A NATIONAL ACCOUNT WITH HALTON CO. FOR THE HOODS. CHICK-FIL-A WILL PURCHASE AND PROVIDE THE HOODS FOR INSTALLATION BY THE MECHANICAL CONTRACTOR. THE MECHANICAL CONTRACTOR SHALL BE RESPONSIBLE FOR RECEIVING THE HOODS. CONTACT HALTON CO. AT 270-237-5600 FOR MORE INFO.
2. THE FIRE SUPPRESSION SYSTEM SHALL CONSIST OF A COMPLETE WET ANSUL SYSTEM FURNISHED BY HALTON. THE HOOD SHALL BE FURNISHED PRE-PIPED BY HALTON.
3. THE R-102 ANSUL FIRE SUPPRESSION SYSTEM EXTERNAL TO THE HOODS SHALL BE INSTALLED IN ACCORDANCE WITH HOOD MANUFACTURER'S SHOP DRAWINGS BY AN AUTHORIZED ANSUL SYSTEM INSTALLER HIRED BY HALTON.
4. HOOD EXHAUST DUCTWORK SHALL BE 16 GA. BLACK STEEL WITH CONTINUOUS LIQUID TIGHT WELD OF JOINTS & SEAMS.
5. TURNS IN GREASE EXHAUST DUCTWORK SHALL BE LONG RADIUS TYPE, WITH A CENTERLINE RADIUS $R=3W/2$, NO EXCEPTIONS ALLOWED. NO MITERED FITTINGS ALLOWED.
6. ALL STAINLESS STEEL CLOSURE PANELS SHALL BE SUPPLIED BY HOOD MANUFACTURER AND INSTALLED BY THE MECHANICAL CONTRACTOR ACCORDING TO MANUFACTURER'S RECOMMENDATIONS.
7. SLOPE ALL GREASE EXHAUST DUCT BACK TO HOOD AT 1/4" PER FOOT OF RUN.
8. WRAP NEW GREASE DUCT WITH unifax firewrap. Insulation on ACCESS DOORS SHALL BE INSTALLED ACCORDING TO manufacturer's installation recommendations. unifax firewrap product used shall meet local code requirements.
9. SUPPORT HOODS WITH THREADED ROD AT each factory support point. each support point must support the hood weight equally. ATTACH TO STRUCTURE AS SHOWN ON DETAIL 4.
10. join hoods #11 and #1r together with sae grade 5 hardware as shown on halton shops.

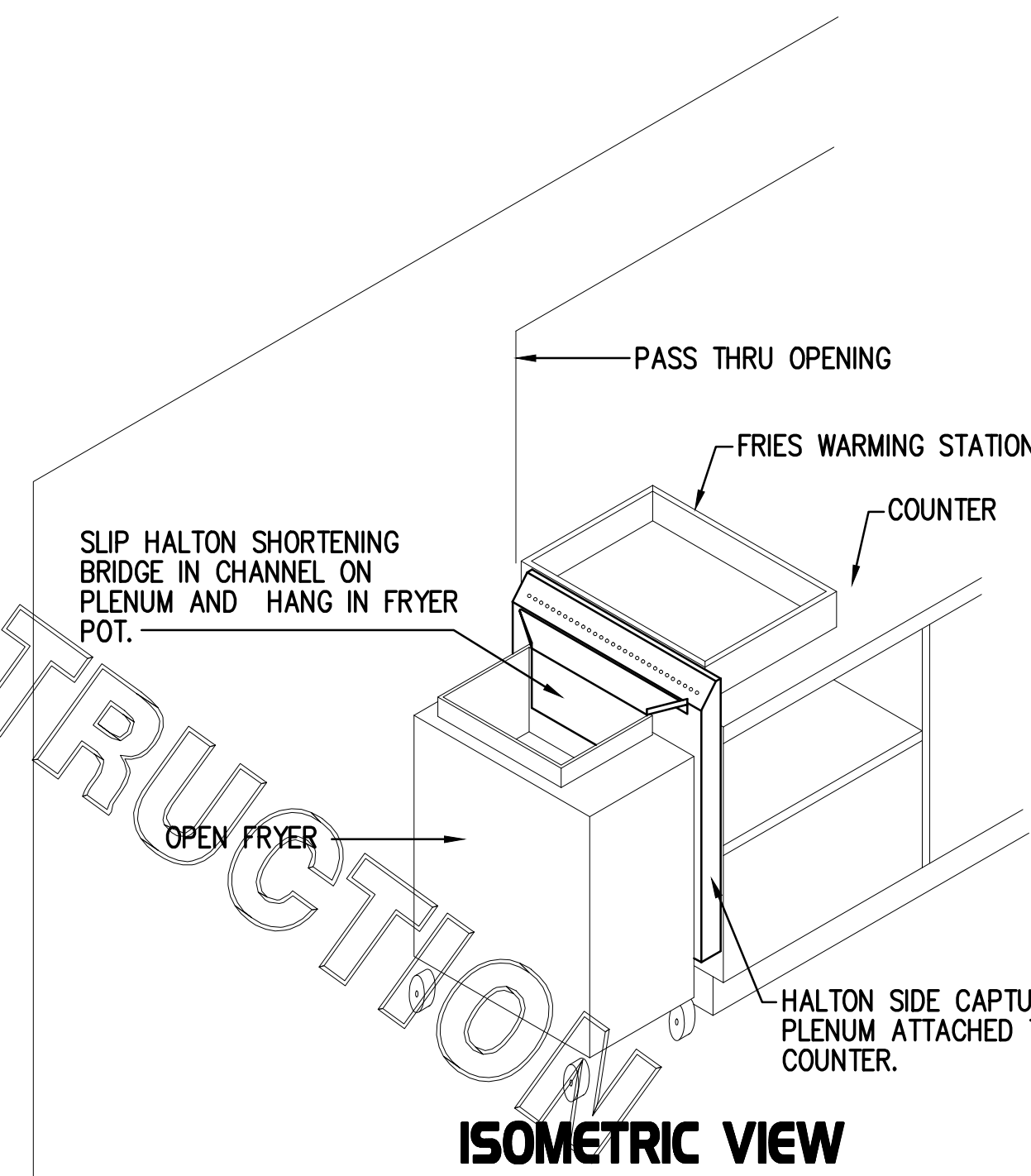


4 ATTACHMENT DETAILS

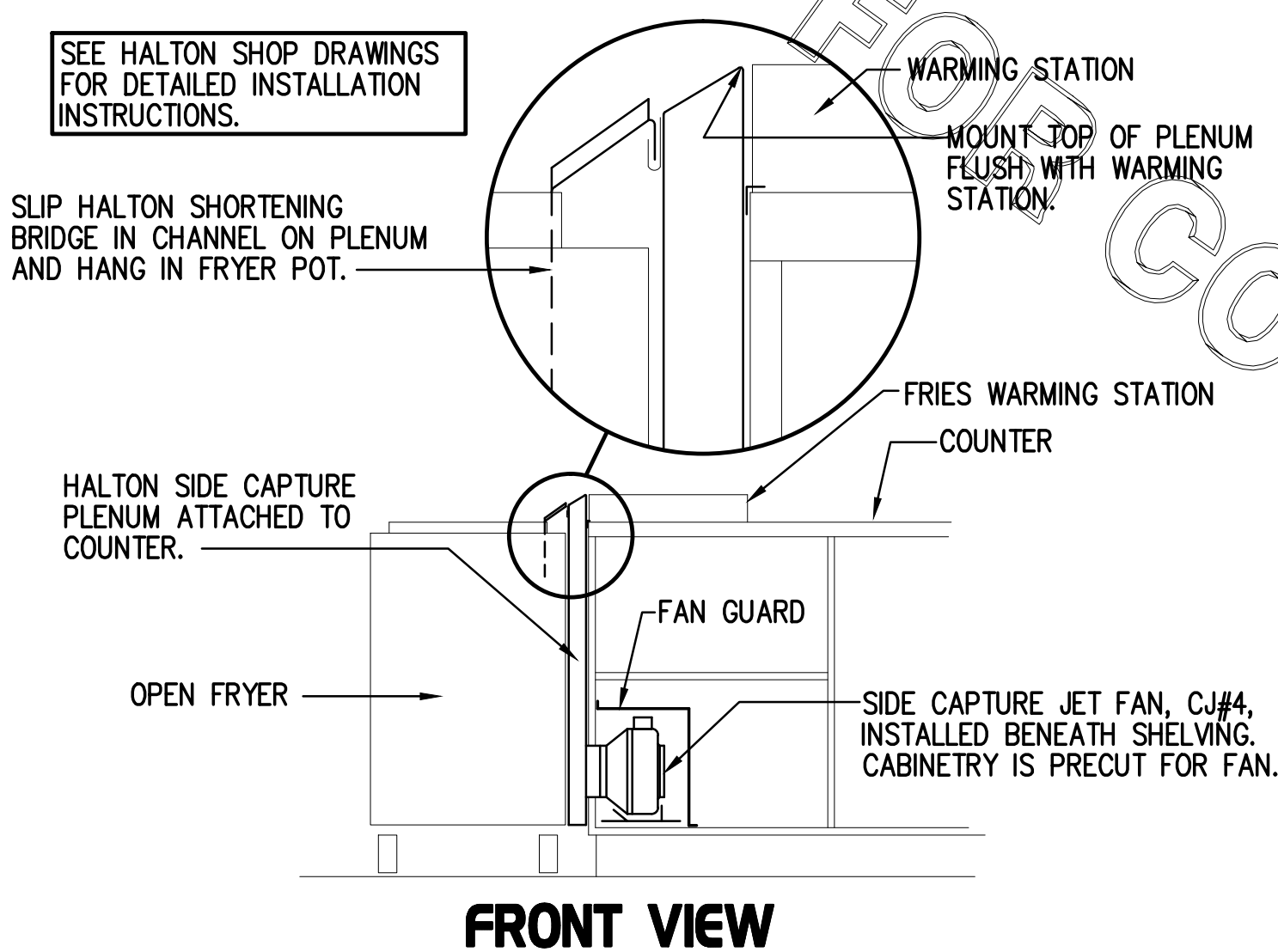
NOT TO SCALE



5 HOOD SCHEDULE											
MARK	EXHAUST CFM	SP @ TAB PORT	CAPTURE JET CFM & S.P.	TYPE	COLLAR SIZE	WIDTH	DEPTH	HEIGHT	MANUFACTURER	MODEL	REMARKS
HOOD#1	1,770	0.14"	104 @ 0.30"	BACK SHELF	8"x18"	137.5"	34"	48"	HALTON	KVL-2	1,2,3,4,5,8,9,10,14,15
HOOD#2	700	0.27"	30 @ 0.30"	BACK SHELF	8"x8"	40"	34"	48"	HALTON	KVL-2	1,2,3,4,5,7,9,10,11,13,16,17,18
HOOD#3	883	0.13"	56 @ 0.45"	BACK SHELF	9"x8"	75"	40"	49"	HALTON	KVM	1,2,3,4,5,6,10,12,15,16
NOTES: DIMENSIONS OF HOODS INCLUDE BACK AND SIDE SPACERS (HEIGHT DOES NOT INCLUDE CLOSURE PANELS).											
REMARKS: <ol style="list-style-type: none"> 1) STAINLESS STEEL CONSTRUCTION. 2) PROVIDE FULL HEIGHT SS CLOSURE PANEL WITH ACCESS PANEL IN FRONT LARGE ENOUGH TO REMOVE CAPTURE JET FAN. 3) PROVIDE FULL HEIGHT SS CLOSURE PANEL WITH ACCESS PANEL IN FRONT LARGE ENOUGH TO SERVICE ANSUL COMPONENTS. 4) PROVIDE PRE-PIPED ANSUL R-102 WET FIRE EXTINGUISHING SYSTEM. 5) PROVIDE 3" BACK SPACER. 6) ANSUL CABINET AND COMPONENTS ON RIGHT SIDE ABOVE HOOD. PROVIDE NOTCHED RIGHT END SIDE PANEL. 7) PROVIDE NOTCHED RIGHT END SIDE PANEL. 8) ANSUL CABINET AND COMPONENTS ON LEFT SIDE ABOVE HOOD. 9) PROVIDE TOP PLENUM CAPTURE JET FAN, SPEED CONTROLLER AND COLLAR. 10) PROVIDE COUNTER MOUNTED SIDE CAPTURE JET PLENUM ASSEMBLY AND FAN ON RIGHT SIDE OF HOOD. 11) PROVIDE DOUBLE RECEPTACLE PIN AND SLEEVE. 12) PROVIDE SIDE SHIELD ON LEFT SIDE. 13) PROVIDE NOTCHED right END PANEL EXTENDING BELOW TOP OF COOKING SURFACE. 14) PROVIDE NOTCHED left END PANEL EXTENDING BELOW TOP OF COOKING SURFACE. 15) PROVIDE FULL right END PANEL EXTENDING BELOW TOP OF COOKING SURFACE. 16) PROVIDE FULL left END PANEL EXTENDING BELOW TOP OF COOKING SURFACE. 17) provide pin and sleeve electrical box (double connection). see architectural and electrical drawings for additional information. 18) provide 3" custom back spacer to accommodate pin and sleeve electrical box. 											



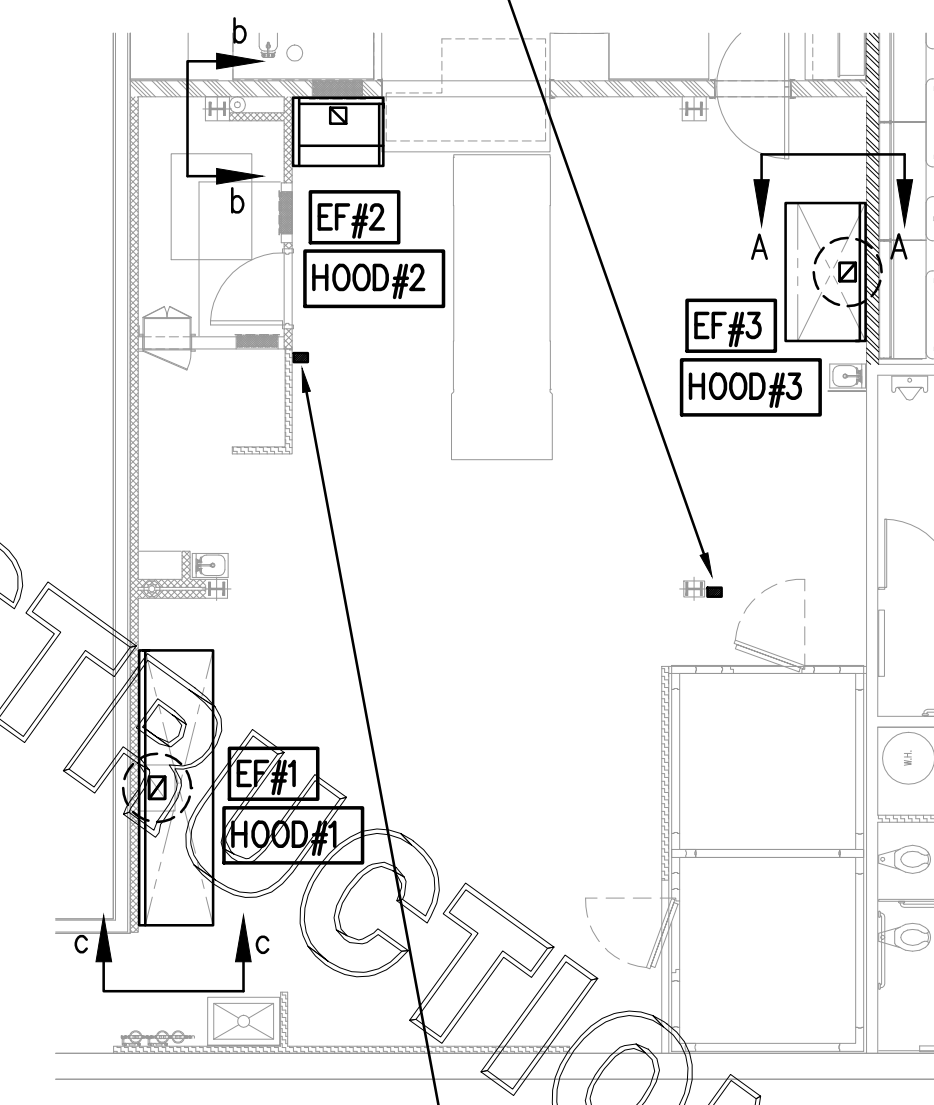
ISOMETRIC VIEW



FRONT VIEW

ANSUL PULL STATION ABOVE HANDSINK SERVING HOOD#2 AND HOOD#3. ANSUL REMOTE PULL STATION, J-BOX AND CONDUIT ARE BY ELECTRICAL. PROVIDE RED BAKELITE LABEL WITH 1/2" HIGH LETTERS INDICATING THE HOODS SERVED.

NOTE: SEE ARCHITECTURAL PLANS FOR HOOD LOCATIONS.



ANSUL PULL STATION ABOVE HANDSINK SERVING HOOD#1. ANSUL REMOTE PULL STATION, J-BOX AND CONDUIT ARE BY ELECTRICAL. PROVIDE RED BAKELITE LABEL WITH 1/2" HIGH LETTERS INDICATING THE HOODS SERVED, i.e.: "MAIN cookline hood".

2 HALTON SIDE CAPTURE JET PLENUM

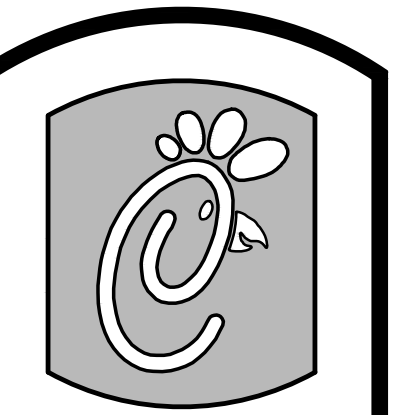
NOT TO SCALE

1 HOOD LAYOUT

1/8"=1'-0"

3 HOOD ELEVATIONS

NONE



Chick-fil-A
5200 Buffington Rd.
Atlanta Georgia,
30349-2998

Revisions:
Mark Date By
8 3/21/2012

OWNER REVISIONS

Mark Date By
△

Mark Date By
△

Seal

Kurzynske & Associates
CONSULTING ENGINEERS
825 Third Avenue, South
Nashville, Tennessee 37210
Telephone: (615) 255-5203
Fax: (615) 255-5207
Email: mail@kurzynske.com

STORE Name:
Willston Centre
In-Line# 2931

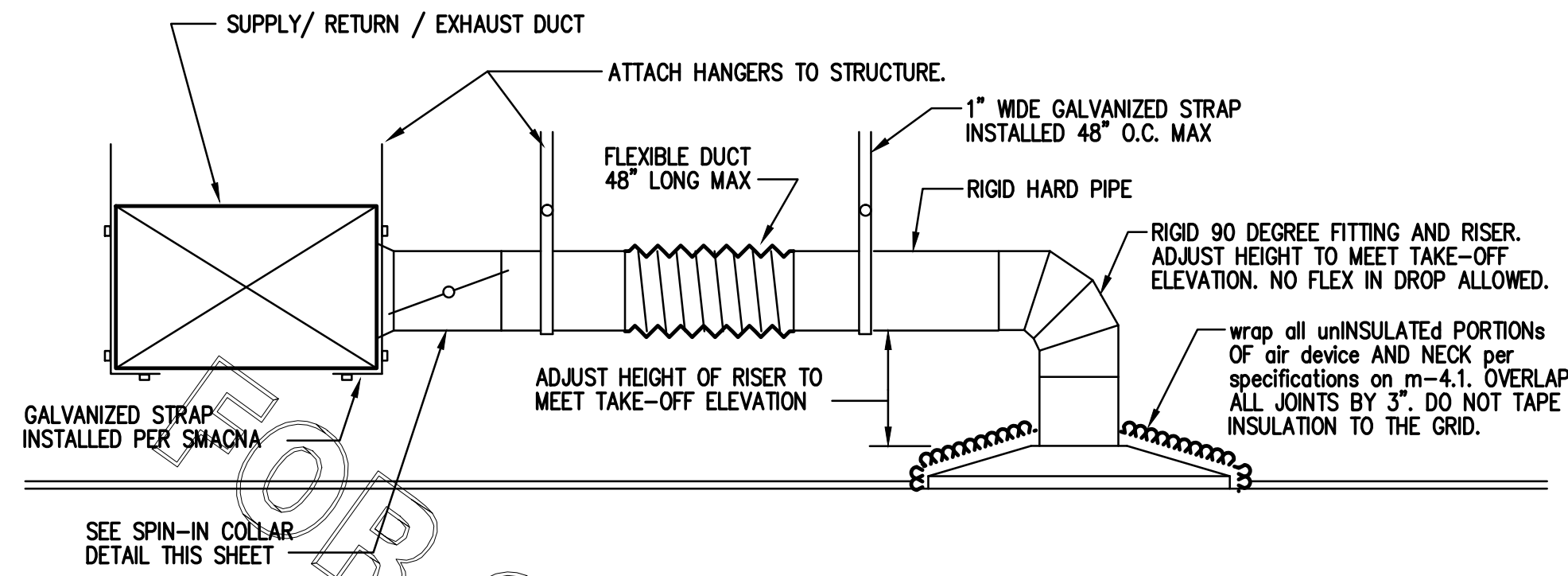
6108 Arlington Blvd.
Falls Church
VA 22044

SHEET TITLE
HOOD DETAILS
& SCHEDULES

VERSION:
ISSUE DATE: 1-2011

Job No. : 11-119
Store : 2931
Date : 5/26/11
Drawn By :
Checked By :

Sheet
M-2.1

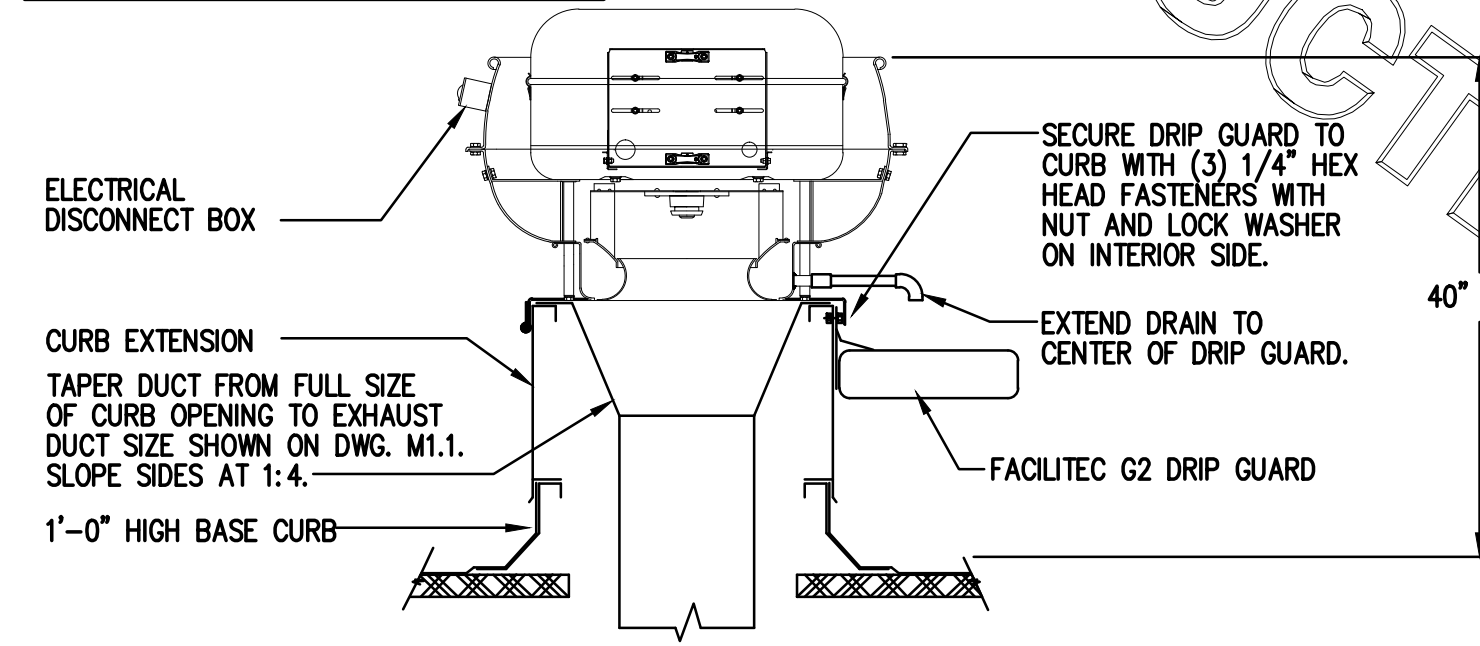


1 SAG/RAG/GRILLE TAKE-OFF

NO SCALE

- HINGED SIDE OF EF#1 AND EF#2 MUST FACE FRONT OF BUILDING.
- HINGED SIDE OF EF#3 AND EF#4 MUST FACE REAR ENTRANCE OF BUILDING.

SECURE FAN TO CURB WITH #12x1-1/2" SHEET METAL SCREWS ON 1'-0" CENTERS.

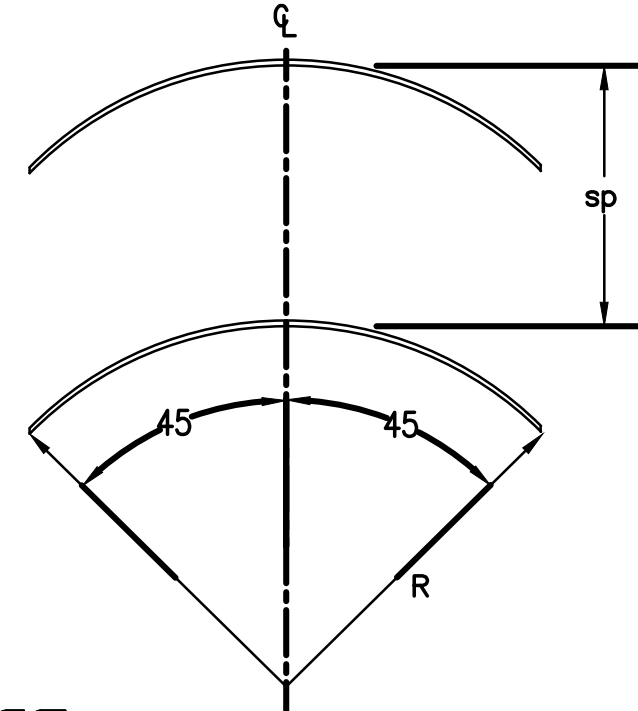


3 KITCHEN HOOD EXHAUST FAN

NO SCALE

TURNING VANE SCHEDULE		
r	SP	GA
2"	1.5"	24

1) NO TRAILING EDGE
2) SINGLE THICKNESS CONSTRUCTION.



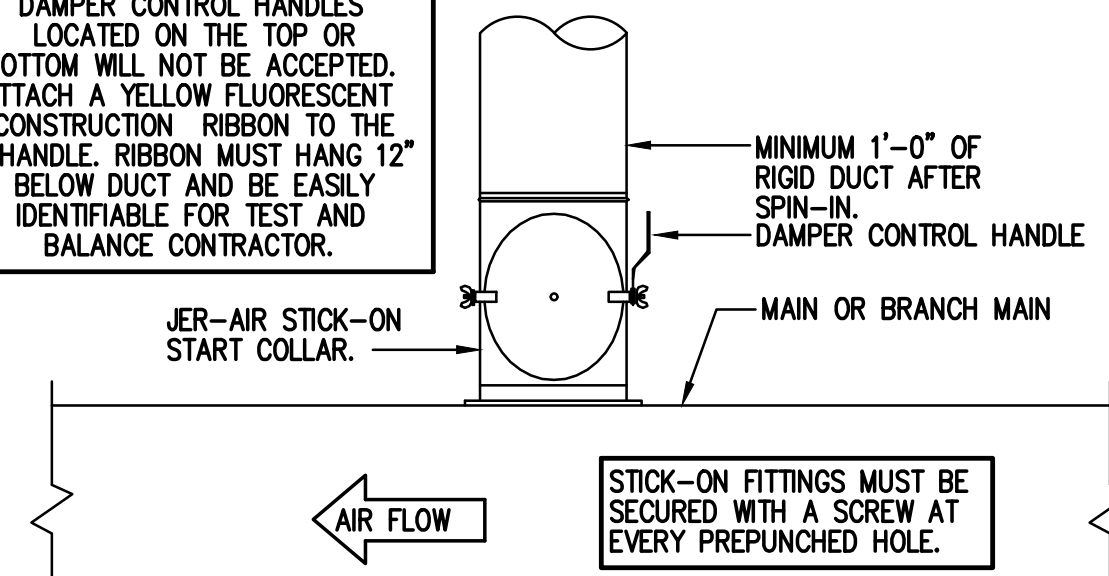
5 TURNING VANES

NO SCALE

CHICK-FIL-A HAS A NATIONAL ACCOUNT WITH TOM BARRROW COMPANY FOR THE JER-AIR START COLLARS. THE MECHANICAL CONTRACTOR IS REQUIRED TO PURCHASE THE JER-AIR START COLLARS DIRECTLY FROM TOM BARRROW COMPANY. CONTACT MR. SCOTT GEORGE AT 404-351-1010 FOR PRICING AND AVAILABILITY. JER-AIR START COLLARS NOT PURCHASED THRU TOM BARRROW COMPANY WILL NOT BE ACCEPTED.

DAMPER CONTROL HANDLE MUST BE LEFT EXPOSED AND LOCATED ON THE LEFT OR RIGHT SIDE. DAMPER CONTROL HANDLES LOCATED ON THE TOP OR BOTTOM WILL NOT BE ACCEPTED. ATTACH A YELLOW FLUORESCENT CONSTRUCTION RIBBON TO THE HANDLE. RIBBON MUST HANG 12" BELOW DUCT AND BE EASILY IDENTIFIABLE FOR TEST AND BALANCE CONTRACTOR.

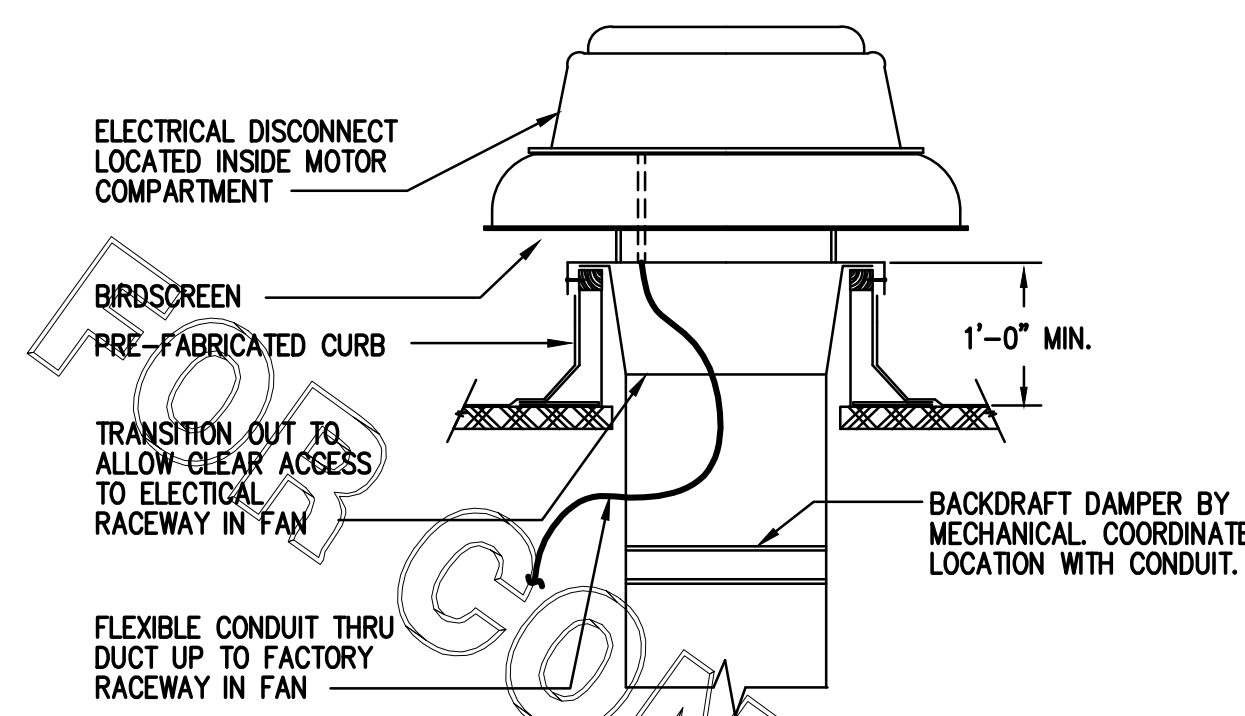
do not apply start collar over duct wrap.



2 START COLLAR

NO SCALE

SECURE FAN TO CURB WITH SHEET METAL SCREWS (#10 x 1-1/2") 8" O.C. ALL AROUND



4 RESTROOM EXHAUST FAN

NO SCALE

AIR DEVICE SCHEDULE

MARK	DESCRIPTION	LOCATION	NECK SIZE	FACE SIZE	FRAME TYPE	REMARKS
A	TITUS MODEL PSS-AA ALUMINUM SUPPLY AIR DIFFUSER WITH AIR PATTERN CONTROLLER.	DINING AREA KITCHEN	SEE PLAN	24x24	LAY-IN	1,8
F	DONCO MODEL CFDF EGGRATE RETURN AIR GRILLE WITH REMOVABLE WHITE CORE, FACTORY FLAT BACKPAN AND ROUND NECK.	DINING/OFFICE KITCHEN	SEE PLAN	24x24	LAY-IN	1,7
H	TITUS MODEL TMR-AA ALUMINUM CONCENTRIC ROUND CONE SUPPLY DIFFUSER.	OFFICE	10	18	LAY-IN	1,6,7
J	TITUS MODEL MCD STEEL SUPPLY AIR DIFFUSER FIELD ADJUSTABLE AIR PATTERN CONTROLLERS.	RESTROOMS	10x10	15x15	SURFACE	1,2,3,5,7
K	TITUS MODEL PAR STEEL PERFORATED FACE RETURN AIR GRILLE.	RESTROOMS	14x14	16x16	SURFACE	1,4,7
notes	MECHANICAL CONTRACTOR SHALL PURCHASE THE AIR DEVICES DIRECTLY FROM TOM BARRROW COMPANY. CONTACT MR. SCOTT GEORGE AT 404-351-1010, FOR PRICING AND AVAILABILITY. AIR DEVICES NOT PURCHASED THRU TOM BARRROW COMPANY WILL NOT BE ACCEPTED.					
REMARKS	<ol style="list-style-type: none"> STANDARD OFF WHITE FINISH. PROVIDE MODEL AG-85 NECK DAMPER. SEE DRAWING M1.1 FOR THROW. PROVIDE MODEL AG-75 NECK DAMPER ON GRILLES IN RESTROOMS. field fabricate 8" deep backpan, seal joints with mastic and insulate externally. PROVIDE AG-75 NECK DAMPER, ADJUSTABLE THRU DIFFUSER FACE. FIELD INSULATE BACKPAN AS SHOWN ON DETAIL 1/M-3.1. FACTORY INSULATED R-6 BACKPAN. 					

LENNOX GAS FIRED ROFTOP UNIT SCHEDULE

MARK	COOLING CAPACITY (MBH)		HEATING CAPACITY (MBH)		FAN SECTION (CFM)			MODEL	MANUFACTURER	REMARKS	
	TOTAL	SENS	INPUT	OUTPUT	SUPPLY	O.A.	HP				ESP
AC#1	294.5	226.8	480.0	384.0	8,000	2,400	17.5	1.0	LGH300S4	LENNOX	1,2,3,4,5,6,7,8,9,10,11,12
AC#2	175.0	103.5	480.0	384.0	5,400	1,620	5	.85	LGH180H48	LENNOX	1,2,3,4,5,6,7,8,9,10,11,12
NOTES	<ul style="list-style-type: none"> COOLING CAPACITIES ARE GROSS, BASED ON INDOOR: 75Fdb/62.6Fwb, OUTDOOR: 93Fdb/75Fwb, and 400 cfm per ton. CHICK-FIL-A MAINTAINS A NATIONAL ACCOUNT FOR EQUIPMENT WITH LENNOX CORPORATION. CONTACT LENNOX NATIONAL ACCOUNTS AT 972-497-6219 (OR BY FAX AT 972-497-5112) FOR PRICING, ORDERING AND AVAILABILITY. Mechanical Contractor to verify lennox submittal with construction documents. 										
REMARKS	<ol style="list-style-type: none"> PROVIDE DIFFERENTIAL ENTHALPHY ECONOMIZER WITH POWER EXHAUST. PROVIDE 14" HIGH ROOF CURB. SEE DETAIL 2/M4.1 FOR SETTING OF ECTO PARAMETERS BY MC. PROVIDE FACTORY INSTALLED 115V GEL SERVICE OUTLET. PROVIDE FACTORY INSTALLED RETURN SIDE SMOKE DETECTOR. PROVIDE FACTORY INSTALLED NON-FUSED DISCONNECT. PROVIDE 2" MERV 7 THROW AWAY FILTERS. PROVIDE HINGED PANELS FOR FILTER ACCESS, FAN MOTOR ACCESS, COMPRESSOR ACCESS AND CONTROL COMPARTMENT ACCESS. ADJUST GAS MANIFOLD PRESSURE AT LOCATIONS WHERE ELEVATION EXCEEDS 2000' ABOVE SEA LEVEL AS RECOMMENDED BY MANUFACTURER. PROVIDE HUMIDITROL OPTION WITH FACTORY WALL MOUNTED HUMIDITY SENSOR (STATES OF CA AND AZ EXCLUDED). provide fresh air tempering kit. 										

LENNOX FRESH AIR TEMPERING SETUP

- INSTALL FRESH AIR TEMPERING KIT WIRING HARNESS AS RECOMMENDED BY LENNOX.
- LOCATE SUPPLY AIR TEMPERATURE SENSOR IN SUPPLY DUCT DOWNSTREAM OF FIRST ELBOW. SECURE WIRING TO DUCT OR STRUCTURE WITH RUBBER COATED CLAMPS. DO NOT RUN WIRING INSIDE DUCT WORK. PROTECT ALL WIRING PENETRATIONS WITH RUBBER GROMMETS.
- CHANGE ROFTOP UNIT ECTO PARAMETER 6.20 TO A VALUE OF 145. THIS WILL PREVENT THE SUPPLY AIR TEMPERATURE FROM DROPPING BELOW 66F DEG DURING HEATING MODE WHEN THERMOSTAT IS NOT ACTIVELY CALLING FOR HEAT. ECTO PARAMETER 6.20 MUST BE CHANGED TO ACTIVATE THE FRESH AIR TEMPERING FEATURE.
- CHANGE ROFTOP UNIT ECTO PARAMETER 6.21 TO A VALUE OF 21 WHICH WILL MAKE THE DEADBAND VALUE EQUAL 14F.
- CHANGE ROFTOP UNIT ECTO PARAMETER 6.22 TO A VALUE OF 37 WHICH WILL MAKE THE CYCLE TIME VALUE EQUAL 5 MINUTES.

EXHAUST FAN SCHEDULE

MARK	CFM	ESP	RPM	TIP SPEED (FPM)	HP	AREA SERVED	MODEL	MANUFACTURER	REMARKS
EF#1	1,770	3/4	1,182	4641	1/2	HOOD#1	150V5B	LOREN COOK	1,2,3,4,5,6,12
EF#2	700	3/4	1,214	4767	1/4	HOOD#2	150w5b	LOREN COOK	1,2,3,4,5,6,12
EF#3	883	3/4	1,268	4945	1/4	HOOD#3	150w5b	LOREN COOK	1,2,3,4,5,6,12
EF#4	450	3/8	1,429	3413	1/8	RESTROOMS	ACED-90C1SDH	LOREN COOK	2,7,8,9,10,11,12
NOTES	<ul style="list-style-type: none"> GREASE EXHAUST FAN RPM BASED ON 80 DEGREE F AIR AT 1000 FEET ABOVE SEA LEVEL. GREASE EXHAUST FANS TO BE U.L. 782 LISTED. 								
REMARKS	<ol style="list-style-type: none"> PROVIDE FACTORY 1'-0" BASE CURB AND EXTENSION. PROVIDE FACTORY INSTALLED, PRE-WIRED, NEMA 3 NON-FUSED DISCONNECT. PROVIDE FACTORY INSTALLED HINGED BASE KIT. PROVIDE FACTORY INSTALLED WIND BAND CLEAN OUT PORT. PROVIDE FACTORY INSTALLED HELICAL SPRING AUTOMATIC BELT TENSIONER. PROVIDE AND INSTALL FACILITEC G2 DRIP GUARD. THE MECHANICAL CONTRACTOR IS TO CONTACT FACILITEC AT 800-284-8273 FOR PURCHASING AND SHIPPING ARRANGEMENTS. PROVIDE BIRDSCREEN. BACKDRAFT DAMPER IN DUCT BY MECHANICAL CONTRACTOR AS SHOWN ON 4/M-3.1. STARTER BY ELECTRICAL CONTRACTOR. INTERLOCK WITH LIGHTS BY ELECTRICAL CONTRACTOR. PROVIDE 12" HIGH CURB. PROVIDE FACTORY INSTALLED AND WIRED SPEED CONTROLLER. CHICK-FIL-A HAS A NATIONAL ACCOUNT WITH TOM BARRROW COMPANY FOR THE FAN/CURB PACKAGE. THE MECHANICAL CONTRACTOR IS REQUIRED TO PURCHASE THE FAN/CURB PACKAGE DIRECTLY FROM TOM BARRROW COMPANY. CONTACT MR. SCOTT GEORGE AT 404-351-1010 FOR PRICING AND AVAILABILITY. FANS AND CURBS NOT PURCHASED THRU TOM BARRROW COMPANY WILL NOT BE ACCEPTED. 								

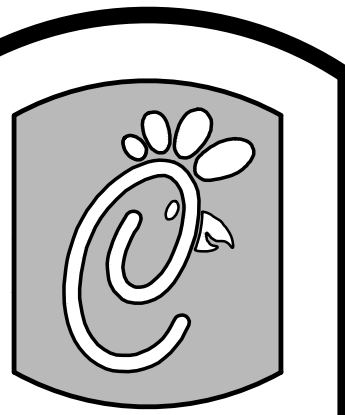
OUTSIDE AIR CALCULATIONS

OCCUPANCY CLASSIFICATION	AREA (S.F.)	OUTDOOR AIR RATE (PER VMC)	AREA OUTDOOR AIR	OCCUPANT LOAD RATE PER VMC	OCCUPANCY	OCCUPANT O.A. RATE	BREATHING ZONE OUTDOOR AIR	ZONE AIR DISTRIBUTION EFF.	ZONE OUTDOOR AIR	SUPPLY AIR DESIGN	OUTDOOR AIR FRACTION
DINING	1509	0.18	272	70 PEOPLE/1000 S.F.	105	803	1075	0.8	1343	1345	0.99
KITCHEN	978	0.7	684		0	0	684	0.8	855	2350	0.37
SERVING	304	0.18	55		6	45	100	0.8	125	125	1.0
TOTALS											

TOTAL OUTDOOR AIR REQUIRED IS EQUAL TO 2,323 CFM. THE TOTAL OUTSIDE AIR PROVIDED IS EQUAL TO 3820 CFM. THE PERCENTAGE OF OUTSIDE AIR PROVIDED IS 28.5%.

AIR DOOR SCHEDULE

MARK	CFM	VELOCITY	HEATING CAP	HP	AREA SERVED	MODEL	MANUFACTURER	REMARKS
AD#1	3,384	4,000	NA	3/4	REAR DOOR	BCT-1-42	POWERED-AIRE	1
notes	<ul style="list-style-type: none"> CHICK-FIL-A HAS A NATIONAL ACCOUNT WITH TOM BARRROW COMPANY FOR THE AIR DOORS. THE MECHANICAL CONTRACTOR SHALL PURCHASE THE AIR DOORS DIRECTLY FROM TOM BARRROW COMPANY. CONTACT MR. SCOTT GEORGE AT 404-351-1010, FOR PRICING AND AVAILABILITY. AIR DOORS NOT PURCHASED THRU TOM BARRROW COMPANY WILL NOT BE ACCEPTED. 							
REMARKS	<ol style="list-style-type: none"> FACTORY PROVIDED, wired, and unit MOUNTED thermostat located on right side. FACTORY PROVIDED, wired, and UNIT MOUNTED SPEED CONTROLLER located on bottom. FACTORY PROVIDED seco-larm sm-226r magnetic contact with factory-installed low voltage controls located in air door cabinet. 							



Chick-fil-A

5200 Buffington Rd.
Atlanta Georgia,
30349-2998

Revisions:

Mark	Date	By
1	08/12/11	

OWNER REVISIONS/
PERMIT COMMENTS

Mark	Date	By
4	12/06/2011	

city permit
comments

Mark	Date	By
8	3/21/2012	

OWNER
REVISIONS

Seal

Kurzynske & Associates
CONSULTING ENGINEERS
825 Third Avenue, South
Nashville, Tennessee 37210
Telephone: (615) 255-5203
Fax: (615) 255-5207
Email: mail@kurzynske.com

STORE
Name:
Willston Centre
In-Line# 2931

6108 Arlington Blvd.
Falls Church
VA 22044

SHEET TITLE
HVAC DETAILS
& SCHEDULES

VERSION:
ISSUE DATE: 1-2011

Job No. : 11-119

Store : 2931

Date : 5/26/11

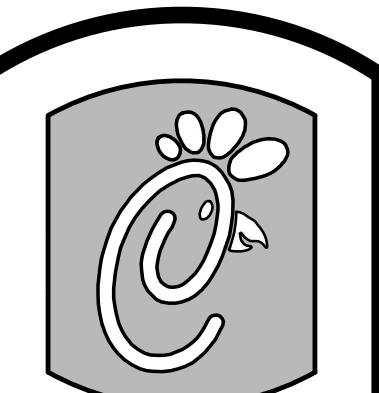
Drawn By : BF

Checked By : MTK

Sheet

M-3.1

PROVIDE A PROFESSIONALLY LAMINATED COPY OF THESE DETAILS TO BE INSTALLED INSIDE THE ROOFTOP UNIT CONTROL CABINET. USE A SETON CHART FRAME STYLE #37387, TELEPHONE NUMBER 800-243-6624. FOR MOUNTING THE DETAIL ATTACH THE FRAME TO THE INTERIOR OF THE UNIT IN PLAIN AND EASY VIEW OF THE CONTROLS SECTION. CONTACT BENNOR ENGINEERING AT 770-728-1422 FOR A REPRODUCIBLE COPY OF THE DETAIL.



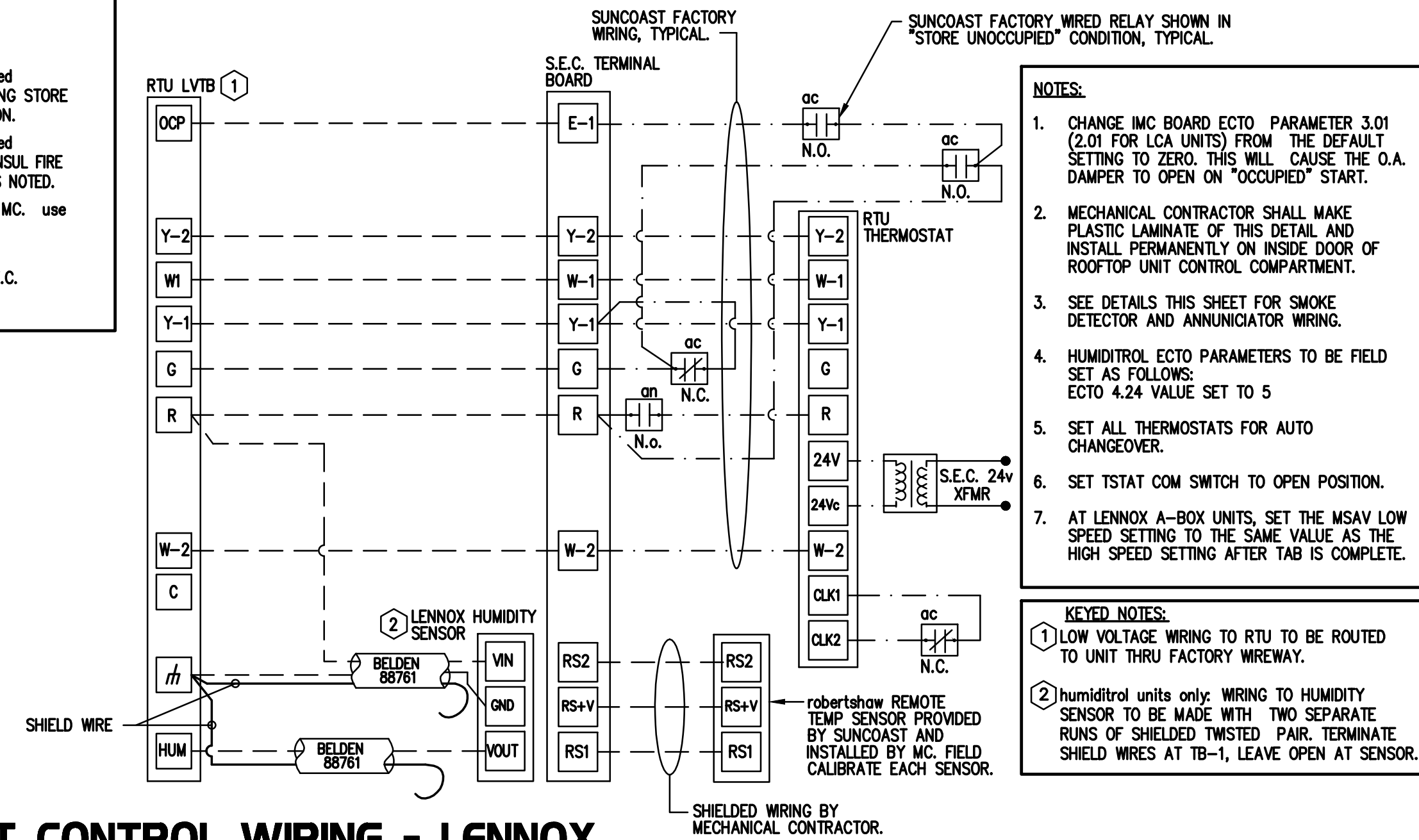
Chick-fil-e

5200 Buffington Rd.
Atlanta Georgia,
30349-2998

FOR CONSTRUCTION

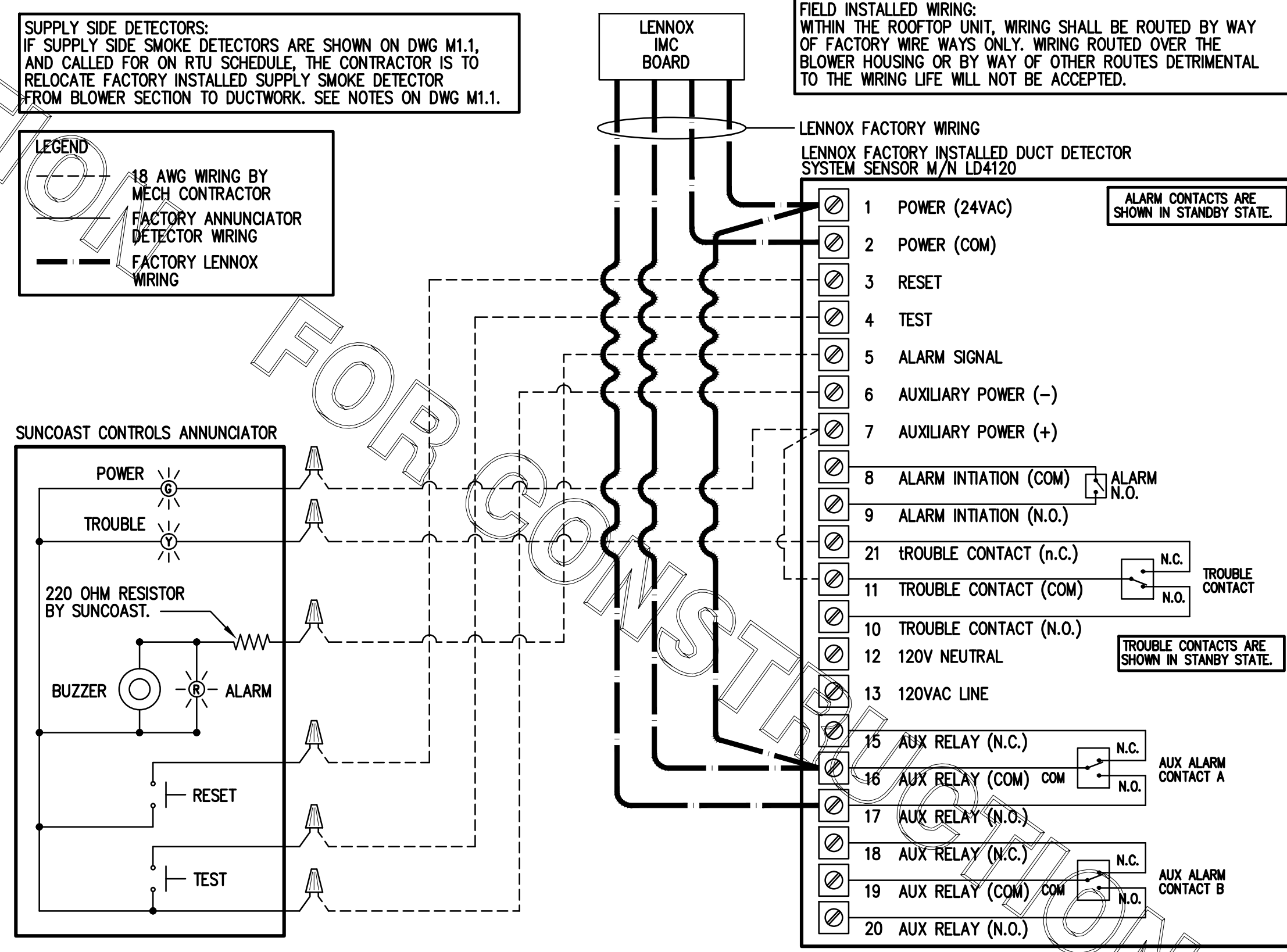
FOR CONSTRUCTION

- LEGEND**
- S.E.C. SUNCOAST ENVIRONMENTAL CONTROLS (SUPPLIER OF TEMP/FAN CONTROL PANEL) LOCATED IN KITCHEN
 - ① KEY NOTE REFERENCE
 - MC MECHANICAL CONTRACTOR
 - ⊙ suncoast relay factory installed and wired in cta-500 panel, ENERGIZED BY PUTTING STORE SWITCH IN "STORE OCCUPIED" POSITION.
 - ⊙ suncoast relay factory installed and wired in cta-500 panel, ENERGIZED WHEN ANSUL FIRE SUPPRESSION SYSTEM IS ACTIVATED, AS NOTED.
 - 18 GA. MIN LOW VOLTAGE WIRING BY MC. use shielded wiring for sensors.
 - - - LOW VOLTAGE WIRING BY S.E.C.
 - — — LINE VOLTAGE BY ELECTRICIAN OR S.E.C.



- NOTES:**
- CHANGE IMC BOARD ECTO PARAMETER 3.01 (2.01 FOR LCA UNITS) FROM THE DEFAULT SETTING TO ZERO. THIS WILL CAUSE THE O.A. DAMPER TO OPEN ON "OCCUPIED" START.
 - MECHANICAL CONTRACTOR SHALL MAKE PLASTIC LAMINATE OF THIS DETAIL AND INSTALL PERMANENTLY ON INSIDE DOOR OF ROOFTOP UNIT CONTROL COMPARTMENT.
 - SEE DETAILS THIS SHEET FOR SMOKE DETECTOR AND ANNUNCIATOR WIRING.
 - HUMIDITROL ECTO PARAMETERS TO BE FIELD SET AS FOLLOWS:
ECTO 4.24 VALUE SET TO 5
 - SET ALL THERMOSTATS FOR AUTO CHANGEOVER.
 - SET TSTAT COM SWITCH TO OPEN POSITION.
 - AT LENNOX A-BOX UNITS, SET THE MSAV LOW SPEED SETTING TO THE SAME VALUE AS THE HIGH SPEED SETTING AFTER TAB IS COMPLETE.
- KEYED NOTES:**
- LOW VOLTAGE WIRING TO RTU TO BE ROUTED TO UNIT THRU FACTORY WIREWAY.
 - humiditrol units only: WIRING TO HUMIDITY SENSOR TO BE MADE WITH TWO SEPARATE RUNS OF SHIELDED TWISTED PAIR. TERMINATE SHIELD WIRES AT TB-1, LEAVE OPEN AT SENSOR.

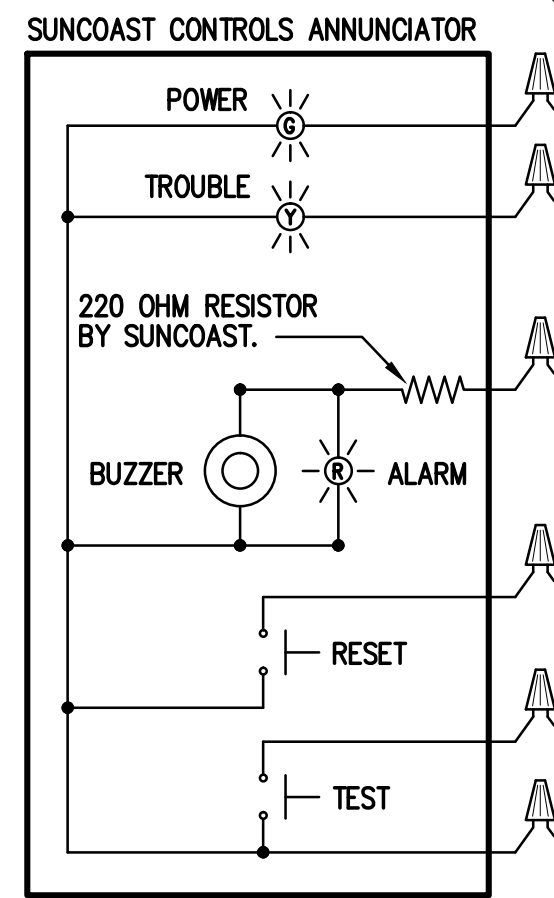
2 ROOFTOP UNIT CONTROL WIRING - LENNOX
NONE



SUPPLY SIDE DETECTORS:
IF SUPPLY SIDE SMOKE DETECTORS ARE SHOWN ON DWG M1.1, AND CALLED FOR ON RTU SCHEDULE, THE CONTRACTOR IS TO RELOCATE FACTORY INSTALLED SUPPLY SMOKE DETECTOR FROM BLOWER SECTION TO DUCTWORK. SEE NOTES ON DWG M1.1.

FIELD INSTALLED WIRING:
WITHIN THE ROOFTOP UNIT, WIRING SHALL BE ROUTED BY WAY OF FACTORY WIREWAYS ONLY. WIRING ROUTED OVER THE BLOWER HOUSING OR BY WAY OF OTHER ROUTES DETRIMENTAL TO THE WIRING LIFE WILL NOT BE ACCEPTED.

- LEGEND**
- 18 AWG WIRING BY MECH CONTRACTOR
 - FACTORY ANNUNCIATOR DETECTOR WIRING
 - FACTORY LENNOX WIRING



- LENNOX FACTORY INSTALLED DUCT DETECTOR SYSTEM SENSOR M/N LD4120**
- 1 POWER (24VAC) ALARM CONTACTS ARE SHOWN IN STANDBY STATE.
 - 2 POWER (COM)
 - 3 RESET
 - 4 TEST
 - 5 ALARM SIGNAL
 - 6 AUXILIARY POWER (-)
 - 7 AUXILIARY POWER (+)
 - 8 ALARM INITIATION (COM) ALARM
 - 9 ALARM INITIATION (N.O.) N.O.
 - 21 TROUBLE CONTACT (N.C.) TROUBLE CONTACT
 - 11 TROUBLE CONTACT (COM) N.O.
 - 10 TROUBLE CONTACT (N.O.) TROUBLE CONTACTS ARE SHOWN IN STANDBY STATE.
 - 12 120V NEUTRAL
 - 13 120VAC LINE
 - 15 AUX RELAY (N.C.) N.C.
 - 16 AUX RELAY (COM) COM
 - 17 AUX RELAY (N.O.) N.O.
 - 18 AUX RELAY (N.C.) N.C.
 - 19 AUX RELAY (COM) COM
 - 20 AUX RELAY (N.O.) N.O.

2 SMOKE DETECTOR AND ANNUNCIATOR WIRING DIAGRAM - LENNOX
NO SCALE

Revisions:
Mark Date By
① 08/12/11

OWNER REVISIONS/
PERMIT COMMENTS

Mark Date By
△

Mark Date By
△

Seal

Kurzynske & Associates
CONSULTING ENGINEERS
825 Third Avenue, South
Nashville, Tennessee 37210
Telephone: (615) 255-5203
Fax: (615) 255-5207
Email: mail@kurzynske.com

STORE Name:
Willston Centre
In-Line# 2931

6108 Arlington Blvd.
Falls Church
VA 22044

SHEET TITLE
HVAC
CONTROLS

VERSION:
ISSUE DATE: 1-2011

Job No. : 11-119
Store : 2931
Date : 5/26/11
Drawn By : BF
Checked By : MTK

Sheet
M-4.1

NATIONAL ACCOUNTS

1. LENNOX EQUIPMENT – CONTACT LENNOX NATIONAL ACCOUNTS AT 972-497-6260 (OR BY FAX AT 972-497-5112) FOR PRICING, ORDERING AND AVAILABILITY. lennox equipment not purchased thru lennox national accounts will not be accepted.
2. LOREN COOK FAN AND CURB PACKAGE – THE MECHANICAL CONTRACTOR IS REQUIRED TO PURCHASE THE FAN/CURB PACKAGE DIRECTLY FROM TOM BARROW COMPANY. CONTACT MR. SCOTT GEORGE AT 404-351-1010 FOR PRICING AND AVAILABILITY. FANS AND CURBS NOT PURCHASED THRU TOM BARROW COMPANY WILL NOT BE ACCEPTED.
3. TITUS AIR DEVICES – THE MECHANICAL CONTRACTOR IS REQUIRED TO PURCHASE THE air devices DIRECTLY FROM TOM BARROW COMPANY. CONTACT MR. SCOTT GEORGE AT 404-351-1010 FOR PRICING AND AVAILABILITY. AIR DEVICES NOT PURCHASED THRU TOM BARROW COMPANY WILL NOT BE ACCEPTED.
4. air doors – THE MECHANICAL CONTRACTOR IS REQUIRED TO PURCHASE THE air doors DIRECTLY FROM TOM BARROW COMPANY. CONTACT MR. SCOTT GEORGE AT 404-351-1010 FOR PRICING AND AVAILABILITY. AIR DOORS NOT PURCHASED THRU TOM BARROW COMPANY WILL NOT BE ACCEPTED.
5. SUNCOAST ENVIRONMENTAL CONTROLS – the cfa 500 panel and THE TEST/RESET STATIONS WILL BE PURCHASED AND PROVIDED BY THE ELECTRICAL CONTRACTOR AS A PART OF A NATIONAL ACCOUNT PACKAGE. see part ii paragraph 3a, 3d, and 3e of the mechanical specifications for more information.
6. Halton Hoods – CHICK-FIL-A WILL PURCHASE AND PROVIDE THE HOODS FOR INSTALLATION BY THE MECHANICAL CONTRACTOR. THE MECHANICAL CONTRACTOR SHALL BE RESPONSIBLE FOR RECEIVING THE HOODS. CONTACT HALTON CO. AT 270-237-5600 FOR MORE INFO.
7. JER-AIR Start Collars – THE MECHANICAL CONTRACTOR IS REQUIRED TO PURCHASE THE start collars DIRECTLY FROM TOM BARROW COMPANY. CONTACT MR. SCOTT GEORGE AT 404-351-1010 FOR PRICING AND AVAILABILITY. start collars NOT PURCHASED THRU TOM BARROW COMPANY WILL NOT BE ACCEPTED.

I. MECHANICAL SPECIFICATIONS

PART I GENERAL

1. IT IS THE RESPONSIBILITY OF CONTRACTOR TO READ ALL SPECIFICATIONS AND CONSULT ALL DRAWINGS WHICH MAY AFFECT THE INSTALLATION AND COORDINATION OF HIS WORK WITH OTHER TRADES. CONTRACTOR SHALL COORDINATE AND MAKE MINOR ADJUSTMENTS IN LOCATION OF EQUIPMENT AND MATERIALS AS NECESSARY TO SECURE COORDINATION.
2. COMPLETED INSTALLATION SHALL CONFORM TO ALL APPLICABLE FEDERAL, STATE AND LOCAL CODES AND ORDINANCES, INCLUDING BUT NOT LIMITED TO THE LATEST APPROVED EDITIONS OF NFPA-96, NFPA-90A, NFPA-54, SMACNA, ASHRAE 90.1 AND ASHRAE 62.
3. SYSTEM LAYOUT IS SCHEMATIC AND EXACT LOCATIONS SHALL BE DETERMINED BY STRUCTURAL CONDITIONS, COORDINATION WITH OTHER TRADES, COORDINATION WITH FINISHES AND OTHER CONDITIONS. STRUCTURAL SUPPORTS SHALL NOT BE CUT OR ALTERED TO ASSURE FIT OF HVAC SYSTEM. TEN FOOT CLEARANCE SHALL BE MAINTAINED BETWEEN OUTSIDE AIR INTAKES AND EXHAUST FANS AND PLUMBING VENT TERMINALS.
4. CONTRACTOR SHALL BE RESPONSIBLE FOR ALL DEFECTS, REPAIRS AND REPLACEMENTS IN MATERIALS AND WORKMANSHIP FOR A PERIOD OF ONE (1) YEAR AFTER FINAL PAYMENT IS APPROVED. CONTRACTOR SHALL HONOR FACTORY WARRANTIES ON ALL EQUIPMENT PROVIDED AS PART OF THIS SYSTEM.
5. UPON COMPLETION OF PROJECT, ALL SYSTEM EQUIPMENT AND MATERIALS SHALL BE IN NEW, CLEAN CONDITION WITH ALL DAMAGE RESTORED TO CONDITION ACCEPTABLE TO THE OWNER'S REPRESENTATIVE. ALL EQUIPMENT, COMPONENTS AND DUCTWORK SHALL BE INSPECTED AND THOROUGHLY CLEANED, READY FOR USE. AT COMPLETION OF JOB, ALL MISCELLANEOUS TOOLS, SCAFFOLDING, SURPLUS MATERIALS, RUBBISH AND DEBRIS SHALL BE REMOVED BY CONTRACTOR.
6. CONTRACTOR SHALL PROVIDE two sets of 2" merv 7 or higher THROW AWAY TYPE FILTERS. A CLEAN SET SHALL BE PROVIDED PRIOR TO TEST AND BALANCE AND AGAIN PRIOR TO OPENING.

PART II PRODUCTS

1. HEATING AND COOLING EQUIPMENT
 - A. FURNISH AND INSTALL r-410a ROOFTOP SINGLE PACKAGE COMBINATION ELECTRIC COOLING AND NATURAL GAS FIRED HEATING UNITS BY LENNOX AS SHOWN ON DRAWINGS. EQUIPMENT SHALL BE ARI CERTIFIED AND A.G.A. AND U.L. LISTED.
 - B. ACCESSORIES SHALL INCLUDE LOW AND HIGH PRESSURE SAFETIES, CRANK CASE HEATER, OVERCURRENT AND OVERTEMPERATURE SAFETY, COMPRESSOR VIBRATION ISOLATORS, FILTER DRIERS, REFRIGERANT SERVICE VALVES, COIL HAIL GUARDS WHERE SCHEDULED, CONVENIENCE OUTLETS FACTORY INSTALLED ON SCHEDULED UNITS, UNIT MOUNTED NON-FUSED DISCONNECTS, LOW AMBIENT OPERATION DOWN TO 30 DEGREES F AND EVAPORATOR FREEZE STAT.
 - C. COMPRESSORS SHALL BE FULLY HERMETIC SCROLL TYPE WITH INTERNAL VIBRATION ISOLATORS. COMPRESSORS SHALL BE PROVIDED WITH A MINIMUM FIVE (5) YEAR FULL WARRANTY.
 - D. THE UNIT HEAT EXCHANGERS SHALL BE STEEL WITH ALUMINIZED STEEL COATING. HEATING CONTROLS SHALL CONSIST OF REDUNDANT GAS VALVES, INTERMITTENT PILOT WITH ELECTRONIC SPARK OR HOT PLATE IGNITION SYSTEM, COMBUSTION/EXHAUST FAN PROTECTED BY CENTRIFUGAL SWITCHES, HEAT LIMIT SWITCHES, TIME-DELAY RELAY, FLAME, AND PILOT SENSORS. ALL UNITS SHALL BE CAPABLE OF TWO STAGES OF HEAT. HEAT EXCHANGES SHALL HAVE A TEN (10) YEAR WARRANTY. BURNERS SHALL BE ALUMINIZED IN-SHOT TYPE. THE DRAFT MOTOR SHALL BE MONITORED BY THE CONTROL SYSTEM.
 - E. CHICK-FIL-A MAINTAINS A NATIONAL ACCOUNT FOR EQUIPMENT WITH LENNOX CORPORATION. PRICING FOR THE EQUIPMENT HAS BEEN ESTABLISHED IN ADVANCE. CONTACT LENNOX NATIONAL ACCOUNTS AT 972-497-6260 (OR BY FAX AT 972-497-5112) FOR PRICING, ORDERING AND AVAILABILITY.

2. DUCTWORK, INSULATION & INSTALLATION (SEE DWG M2.1 FOR GREASE DUCT)
 - A. ACCEPTABLE MANUFACTURERS OF INSULATION ARE MANVILLE, OWENS CORNING OR KNAUF.
 - B. ALL DUCTWORK SHALL BE SHEET METAL, unless noted otherwise (u.n.o.).
 - C. DUCT DIMENSIONS SHOWN ARE INSIDE CLEAR DIMENSIONS, U.N.O.
 - D. CONSTRUCTION OF DUCTWORK SHALL MEET SMACNA 1" W.C. PRESSURE CLASS STANDARD AND RECOMMENDATIONS. SMACNA SHALL BE FOLLOWED WITH RESPECT TO GAGE THICKNESS, JOINTS, REINFORCING, CONSTRUCTION, INSTALLATION AND SUPPORT FOR PRESSURE CLASS STATED. ALL TRANSVERSE JOINTS IN RECTANGULAR AND ROUND DUCT SHALL BE SEALED PER SMACNA SEAL CLASS C WITH U.L. DUCT MASTIC SEALANT APPROVED FOR INTENDED USE. DUCT TAPE IS NOT AN ACCEPTABLE SUBSTITUTE FOR MASTIC.
 - E. ALL DUCT INSULATION SHALL MEET MINIMUM R-VALUE REQUIRED BY ASHRAE 90.1 LATEST EDITION. ALL DUCT WRAP SHALL BE MINIMUM 2" THICK, 3/4" PCF AND 5.6 R-VALUE INSTALLED WITH EITHER A VAPOR BARRIER WITH MAXIMUM PERMEANCE 0.05 OR A MINIMUM 2 MIL ALUMINUM REINFORCED FOIL/KRAFT FACING.
 - F. ALL DUCT DROPS FROM THE ROOFTOP UNITS SHALL BE EXTERNALLY INSULATED.
 - G. SUPPLY AND RETURN AIR DUCTWORK SERVING ALL AREAS SHALL BE EXTERNALLY INSULATED.
 - H. all air conveyance components such as, but not limited to duct, duct plenums, grilles/diffusers, back pans, and boots shall be insulated. insulation type is covered elsewhere in this specification.
 - I. RESTROOM RECTANGULAR EXHAUST AIR DUCTWORK SHALL BE LINED WITH 1" THICK, 1-1/2 PCF INSULATION.
 - J. TRUNK DUCTS SHALL BE ISOLATED FROM UNIT VIBRATION WITH THE USE OF NFPA AND U.L. APPROVED FLEXIBLE CONNECTORS INSTALLED AT THE TOP OF BOTH SUPPLY AND RETURN DROPS.
 - K. INSULATED FLEXIBLE DUCT MAY BE UTILIZED FOR RUNOUTS TO GRILLES AND DIFFUSERS ONLY IN THE HORIZONTAL POSITION AND IN MAXIMUM LENGTHS OF 4'-0", NO EXCEPTIONS. SEE TAKE-OFF DETAIL ON DRAWING M3.1.
 - L. CONSTRUCTION OF FLEXIBLE DUCTWORK SHALL INCLUDE SPIRAL METAL HELIX BONDED TO A POLYESTER CORE, FIBERGLASS INSULATION WITH POLYETHYLENE OR MYLAR VAPOR BARRIER. ALL COMPONENTS SHALL HAVE APPROPRIATE U.L. APPROVAL AND SHALL BE EQUIVALENT TO THERMAFLEX MKE.
 - M. FLEXIBLE DUCT SHALL BE INSTALLED per the "adc flexible duct performance and installation standards, 4th ed" using foil tape and drawband on the inner core and tape or drawband on the outer jacket.
 - N. DUCT TAPE SHALL BE EQUAL TO FASSON 181-b FX, 2-1/2" WIDE.
 - O. SINGLE THICKNESS TURNING VANES SHALL BE INSTALLED AT 90 DEGREE TURNS IN SUPPLY DUCTWORK WHERE ANY ONE DIMENSION IS GREATER THAN 12".
 - P. RADIUSSED ELBOWS MAY BE SUBSTITUTED FOR 90 DEGREE ELBOWS AT THE DISCRETION OF THE CONTRACTOR. CENTERLINE RADIUS EQUAL TO; 3W/2 PER FIGURE NO. 2-2 IN SMACNA HVAC DUCT CONSTRUCTION STANDARDS.
 - Q. EXTERNAL INSULATION ON BOTTOM OF DUCTS 24" OR WIDER SHALL BE SUPPORTED WITH STICK PINS ON 18" CENTERS. STICK PIN WASHERS SHALL BE COVERED WITH DUCT TAPE OR MASTIC.

3. CONTROLS

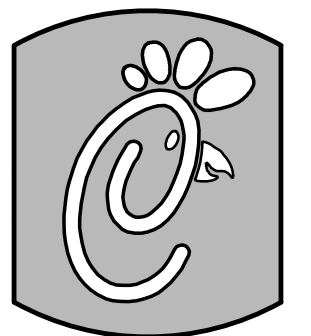
- A. SYSTEMS SHALL BE COMPLETE WITH CONNECTIONS TO CFA-500 TEMPERATURE CONTROL PANEL AS MANUFACTURED BY SUNCOAST ENVIRONMENTAL CONTROLS (S.E.C.) (PH: 877-544-6679). THE PANEL IS PROVIDED AND MOUNTED BY THE ELECTRICAL CONTRACTOR. CONTROL WIRING TERMINATIONS ARE BY THE MECHANICAL CONTRACTOR.
- B. THE SMOKE DETECTORS SHALL BE FACTORY INSTALLED AND WIRED BY THE ROOFTOP UNIT MANUFACTURER.
- C. A FACTORY INSTALLED SMOKE DETECTOR IN THE SUPPLY AIR SECTION OF EACH AIR CONDITIONING UNIT SHALL STOP THE INDOOR FAN AND CLOSE THE OUTSIDE AIR DAMPER IN THE EVENT OF EXCESSIVE TEMPERATURE OR SMOKE. UPON DETECTION, THE SYSTEM SHALL NOT RESTART UNTIL THE DEVICE IS MANUALLY RESET. DEVICES SHALL BE LOCATED WHERE THEY CAN BE EASILY ACCESSED AND WHERE CLEAR OF FILTERS.
- D. CHICK-FIL-A HAS A NATIONAL ACCOUNT WITH SUNCOAST ENVIRONMENTAL CONTROLS FOR THE SMOKE DETECTOR TEST/RESET ANNUNCIATOR STATIONS. THE TEST/RESET STATIONS WILL BE PURCHASED BY THE ELECTRICAL CONTRACTOR AS A PART OF A NATIONAL ACCOUNT PACKAGE and turned over to the mechanical contractor for installation.

- E. THE REMOTE TEST/RESET ANNUNCIATORS SHALL BE PROVIDED BY THE electrical contractor and INSTALLED BY THE MECHANICAL CONTRACTOR. INSTALLATION BY MECHANICAL SHALL INCLUDE MOUNTING OF THE ANNUNCIATORS AND ALL WIRING FROM EACH DEVICE TO THE RTU. ELECTRICAL WILL PROVIDE A JUNCTION BOX IN THE WALL WITH 1/2" CONDUIT STUBBED UP ABOVE THE CEILING FOR EACH REMOTE TEST STATION AS SHOWN ON THE ELECTRICAL PLANS. ANNUNCIATOR SHALL BE SUNCOAST CONTROLS REMOTE TEST/RESET STATION WITH POWER LED, trouble led, ALARM LED, 90db HORN AND TEST/RESET BUTTON.
- F. THE RESTROOM FAN SHALL BE INTERLOCKED TO THE LIGHTS SERVING THE MEN AND WOMEN'S RESTROOMS. THE HOOD FANS SHALL BE CONTROLLED VIA THE SUNCOAST CFA-500 CONTROL PANEL. WIRING, RELAYS AND SWITCHES FOR CONTROL OF ALL FANS ARE BY ELECTRICAL CONTRACTOR.
- G. lennox units – THERMOSTATS ARE PROVIDED AND INTEGRATED INTO THE TEMPERATURE CONTROL PANEL BY SUNCOAST ENVIRONMENT CONTROLS. SUNCOAST WILL PROVIDE A ROBERTSHAW SERIES 300 THERMOSTAT PRE-WIRED IN THE TEMPERATURE CONTROL PANEL. A REMOTE TEMPERATURE SENSOR FOR EACH THERMOSTAT IS ALSO PROVIDED. MECHANICAL CONTRACTOR SHALL INSTALL ALL WIRING BETWEEN THE THERMOSTAT, THE REMOTE SENSOR AND THE ROOFTOP UNIT.
- H. MECHANICAL CONTRACTOR SHALL INSTALL CONTROL WIRING IN 1/2" CONDUIT WHERE REQUIRED BY CODE. WHERE NOT REQUIRED TO BE IN CONDUIT, ALL WIRING SHALL BE RUN PARALLEL TO STRUCTURAL MEMBERS OR PERPENDICULAR WITH NO DIAGONAL ROUTING. ALL WIRING SHALL BE SECURED TO THE FRAMING TO PREVENT SAGGING IN RUNS. WIRING TO ROOFTOP UNITS SHALL BE ROUTED THROUGH THE FACTORY THRU-BASE FITTING IN THE UNIT BASE. NO SPLICING OF WIRING WILL BE ACCEPTED. ALL WIRING ABOVE THE ROOF SHALL BE INSTALLED IN EXTERIOR GRADE FLEXIBLE CONDUIT. ALL CONTROL WIRING AND CONTROL WIRING CONDUIT SHALL BE FURNISHED AND INSTALLED BY THE MECHANICAL CONTRACTOR. WIRING SHALL BE INSTALLED IN ACCORDANCE WITH LATEST EDITION OF NEC.



PART III EXECUTION

1. FURNISH AND INSTALL SYSTEM IN ACCORDANCE WITH REFERENCED STANDARDS, APPLICABLE CODES, MANUFACTURER'S RECOMMENDATIONS AND AS INDICATED ON DRAWINGS.
2. OWNER SHALL TEST AND BALANCE MECHANICAL SYSTEM IN ACCORDANCE WITH NBI OR AABC STANDARDS TO ASSURE CONFORMANCE WITH DESIGN. G.C. WILL MAKE MECHANICAL CONTRACTOR AVAILABLE DURING TEST AND BALANCE TO ASSIST TESTING AGENCY AND TO MAKE CORRECTIONS IMMEDIATELY NECESSARY. CONTRACTOR SHALL CORRECT ITEMS ON WRITTEN TEST AND BALANCE REPORT.
3. CONTRACTOR SHALL INSTRUCT THE OWNER'S REPRESENTATIVE IN ALL MATTERS PERTAINING TO THE PROPER MAINTENANCE OF EQUIPMENT FURNISHED UNDER THIS CONTRACT THROUGH DEMONSTRATION AND EXPLANATION OF OPERATING & MAINTENANCE MANUALS.
4. CONTRACTOR SHALL PROVIDE A "SAMPLE MAINTENANCE PROPOSAL" TO THE OWNER'S REPRESENTATIVE IN ALL MATTERS PERTAINING TO THE PROPER MAINTENANCE OF EQUIPMENT FURNISHED UNDER THIS CONTRACT.
5. CONTRACTOR SHALL COMPLETE A/C EQUIPMENT STARTUP DOCUMENTATION PROVIDED BY OWNER.



Chick-fil-A

5200 Buffington Rd.
Atlanta Georgia,
30349-2998

Revisions:

Mark	Date	By
1	08/12/11	

OWNER REVISIONS/ PERMIT COMMENTS

Mark	Date	By
△		

Mark	Date	By
△		

Seal

Kurzynske & Associates
CONSULTING ENGINEERS
825 Third Avenue, South
Nashville, Tennessee 37210
Telephone: (615) 255-5203
Fax: (615) 255-5207
Email: mail@kurzynske.com

STORE
Name:
Willston Centre
In-Line# 2931

6108 Arlington Blvd.
Falls Church
VA 22044

SHEET TITLE
MECHANICAL
SPECIFICATIONS

VERSION:
ISSUE DATE: 1-2011

Job No. : 11-119
Store : 2931
Date : 5/26/11
Drawn By : BF
Checked By : MTK

Sheet

M-5I

