

**KEY NOTES**

- 2 10X10 UP THRU ROOF.
- 4 AIR CURTAIN MOUNTED OVER DOOR HEADER AT 7'-2" AFF TO BOTTOM OF UNIT. PROVIDE BLOCKING IN WALL BEHIND AIR CURTAIN. USE FACTORY PRE-PUNCHED MOUNTING HOLES ON BACK SIDE OF AIR CURTAIN ONLY. ATTACH AIR CURTAIN TO WALL USING 3/8" LAG BOLTS, LENGTH AS REQUIRED TO FULLY PENETRATE BLOCKING. LOCATE MAGNETIC CONTACT TYPE MICROSWITCH IN DOOR FRAME ON STRIKE SIDE.
- 9 BRANCH TAKE-OFFS ARE NOT TO BE LOCATED CLOSER THAN 3'-0" FROM ANY OFFSET OR ELBOW INCLUDING THE SUPPLY AIR DROP FROM CURB.
- 21 HALTON KBD DAMPER AT HOOD COLLAR BY MECHANICAL CONTRACTOR. SEE HOOD ELEVATIONS ON M-201 FOR LOCATION.
- 26 MECHANICAL CONTRACTOR TO ADJUST PATTERN DEFLECTORS TO THROW STRAIGHT DOWN.
- 27 MECHANICAL CONTRACTOR TO CLOSE THE AIR PATTERN DEFLECTORS ON SHADED SIDE.
- 35 MOUNT REMOTE HUMIDITY SENSOR ON WALL ABOVE SPACE TEMP SENSOR AND ROUTE WIRING TO UNIT ON ROOF.
- 38 MOUNT REMOTE SENSOR ON WALL AT 5'-0" AFF U.N.O. AND ROUTE WIRING BACK TO SUNCOAST TEMP CONTROL PANEL. FOR SENSOR SERVING AC#1, COORDINATE EXACT LOCATION WITH KITCHEN EQUIPMENT.
- 43 ROUTE DUCT WITHIN STRUCTURE.
- 44 SA/RA GRILLE REQUIRES PRICE AMF SURFACE MOUNT ADAPTER FRAME.
- 47 TRANSITION IN VERTICAL DROP FROM FULL SIZE OF CURB OPENING TO SIZE SHOWN. SEE DETAIL 6/M-501 FOR REQUIRED TRANSITION GEOMETRY. TRANSITION WITHIN CURB WHERE REQUIRED TO AVOID STRUCTURE. WHERE THE DUCT IS SHOWN OFFSET HORIZONTALLY, PROVIDE ELBOW WITHOUT TURNING VANES. FOR DROPS WITH NO HORIZONTAL OFFSET, EXTEND DROP BELOW STRUCTURE TO ACCOMMODATE START COLLARS. TERMINATE DROP A MINIMUM 0'-10" ABOVE CEILING IF REQUIRED TO ACCOMMODATE TAKE-OFF AND DROP IS NOT LOCATED DIRECTLY ABOVE A LIGHT).
- 48 TRANSITION IN VERTICAL DROP FROM FULL SIZE OF CURB OPENING TO SIZE SHOWN. TRANSITION WITHIN CURB WHERE REQUIRED TO AVOID STRUCTURE. WHERE THE DUCT IS SHOWN OFFSET HORIZONTALLY, PROVIDE ELBOW WITH TURNING VANES. FOR DROPS WITH NO HORIZONTAL OFFSET, EXTEND DROP BELOW STRUCTURE TO ACCOMMODATE START COLLARS. TERMINATE DROP A MINIMUM 0'-10" ABOVE CEILING IF REQUIRED TO ACCOMMODATE TAKE-OFF AND DROP IS NOT LOCATED DIRECTLY ABOVE A LIGHT).
- 53 RUSKIN MDRS25 MVD W/LOCKING QUADRANT HANDLE.
- 54 SEE ELEVATIONS ON M-201 FOR CJ FAN DUCTING REQUIREMENT.
- 77 TO AC#4, SENSOR #1. SEE 2/M-701.
- 78 TO AC#4, SENSOR #2. SEE 2/M-701.
- 79 TO AC#4, SENSOR #3. SEE 2/M-701.

**AIR BALANCE SCHEDULE - LARGE...**

Mark	SUPPLY AIR	RETURN AIR	OUTSIDE AIR	EXHAUST AIR	BUILDING POSITIVE PRESSURE
AC#1	8,750 CFM	7,000 CFM	1,750 CFM	0 CFM	
AC#2	5,250 CFM	4,350 CFM	900 CFM	0 CFM	
AC#3	5,250 CFM	3,650 CFM	1,600 CFM	0 CFM	
AC#4	1,875 CFM	1,375 CFM	500 CFM	0 CFM	
EF#1	0 CFM	0 CFM	0 CFM	1,913 CFM	
EF#2	0 CFM	0 CFM	0 CFM	1,402 CFM	
EF#3	0 CFM	0 CFM	0 CFM	375 CFM	
	21,125 CFM	16,375 CFM	4,750 CFM	3,690 CFM	1,060 CFM

SEAL PENETRATIONS IN DRAFTSTOPPING CURTAIN AIR TIGHT. SEE ARCH PLANS FOR LOCATION AND CONSTRUCTION OF DRAFTSTOPPING CURTAIN.



Glenstone & Kearney FSU  
 2355 N. Glenstone Avenue  
 Springfield, MO 65803  
 EQUIPMENT AND DUCTWORK PLAN

**Kurzynski & Associates**  
 & Associates  
 2705 Lebanon Pike - Suite One  
 Nashville, Tennessee 37214  
 Telephone: (615) 255-5203



**FSR#05428**  
 BUILDING TYPE / SIZE: P14 SE LRG  
 RELEASE: 22.08

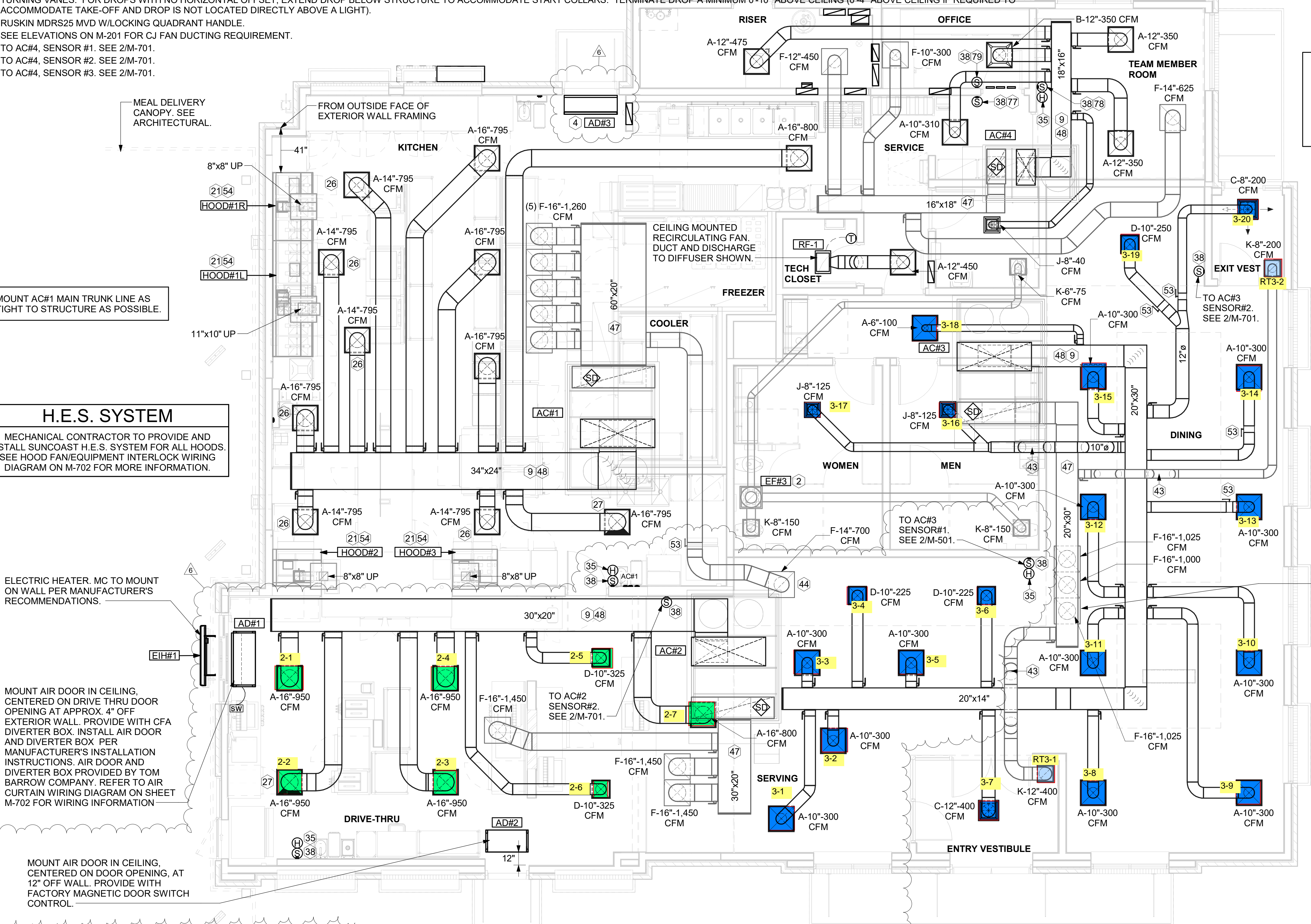
NO.	DATE	DESCRIPTION
1	05/03/23	ISSUED FOR CONSTRUCTION
6	08/24/23	P14 DESIGNOTE REVISION

**ISSUED FOR CONSTRUCTION**

CONSULTANT PROJECT # 23044.CD.S  
 PRINTED FOR ISSUED FOR CONSTRUCTION  
 DATE 04/04/2023  
 DRAWN BY BLM  
 CHECKED BY RDB  
 Information contained on this drawing and in all digital files produced for above named project may not be reproduced in any manner without express written or verbal consent from authorized project representatives.  
 SHEET NUMBER

**M-101**

**1 MECHANICAL FLOOR PLAN**  
 1/4" = 1'-0"



MOUNT AC#1 MAIN TRUNK LINE AS TIGHT TO STRUCTURE AS POSSIBLE.

**H.E.S. SYSTEM**  
 MECHANICAL CONTRACTOR TO PROVIDE AND INSTALL SUNCOAST H.E.S. SYSTEM FOR ALL HOODS. SEE HOOD FAN/EQUIPMENT INTERLOCK WIRING DIAGRAM ON M-702 FOR MORE INFORMATION.

ELECTRIC HEATER, MC TO MOUNT ON WALL PER MANUFACTURER'S RECOMMENDATIONS.

MOUNT AIR DOOR IN CEILING, CENTERED ON DRIVE THRU DOOR OPENING AT APPROX. 4" OFF EXTERIOR WALL. PROVIDE WITH CFA DIVERTER BOX. INSTALL AIR DOOR AND DIVERTER BOX PER MANUFACTURER'S INSTALLATION INSTRUCTIONS. AIR DOOR AND DIVERTER BOX PROVIDED BY TOM BARROW COMPANY. REFER TO AIR CURTAIN WIRING DIAGRAM ON SHEET M-702 FOR WIRING INFORMATION.

MOUNT AIR DOOR IN CEILING, CENTERED ON DOOR OPENING, AT 12" OFF WALL. PROVIDE WITH FACTORY MAGNETIC DOOR SWITCH CONTROL.

Autodesk Docs://MO\_05428\_Glenstone & Kearney FSU\_2023\_2\_FSR05428\_Glenstone & Kearney FSU\_MEC1.rvt  
 8/21/2023 8:45:01 PM  
 30-SE-05428-M-101-EQUIPMENT AND DUCTWORK PLAN