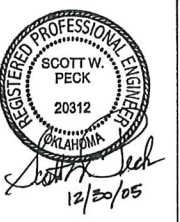




THE DESIGN AND DETAILS DISCLOSED HEREIN ARE THE EXCLUSIVE PROPERTY OF WINTER ARCHITECTS INC. AND SHALL NOT BE COPIED OR REPRODUCED IN WHOLE OR IN PART WITHOUT ITS PRIOR WRITTEN CONSENT.

DAN WINTER, ARCHITECT

FREDDY'S FROZEN CUSTARD
EDMOND ROAD
EDMOND, OKLAHOMA



WINTER ARCHITECTS

1024 EAST FIRST STREET
 WICHITA, KS. 67214
 PH. 316-267-7142

MECHANICAL FLOOR PLAN

DATE
 9/13/05
 12/30/05

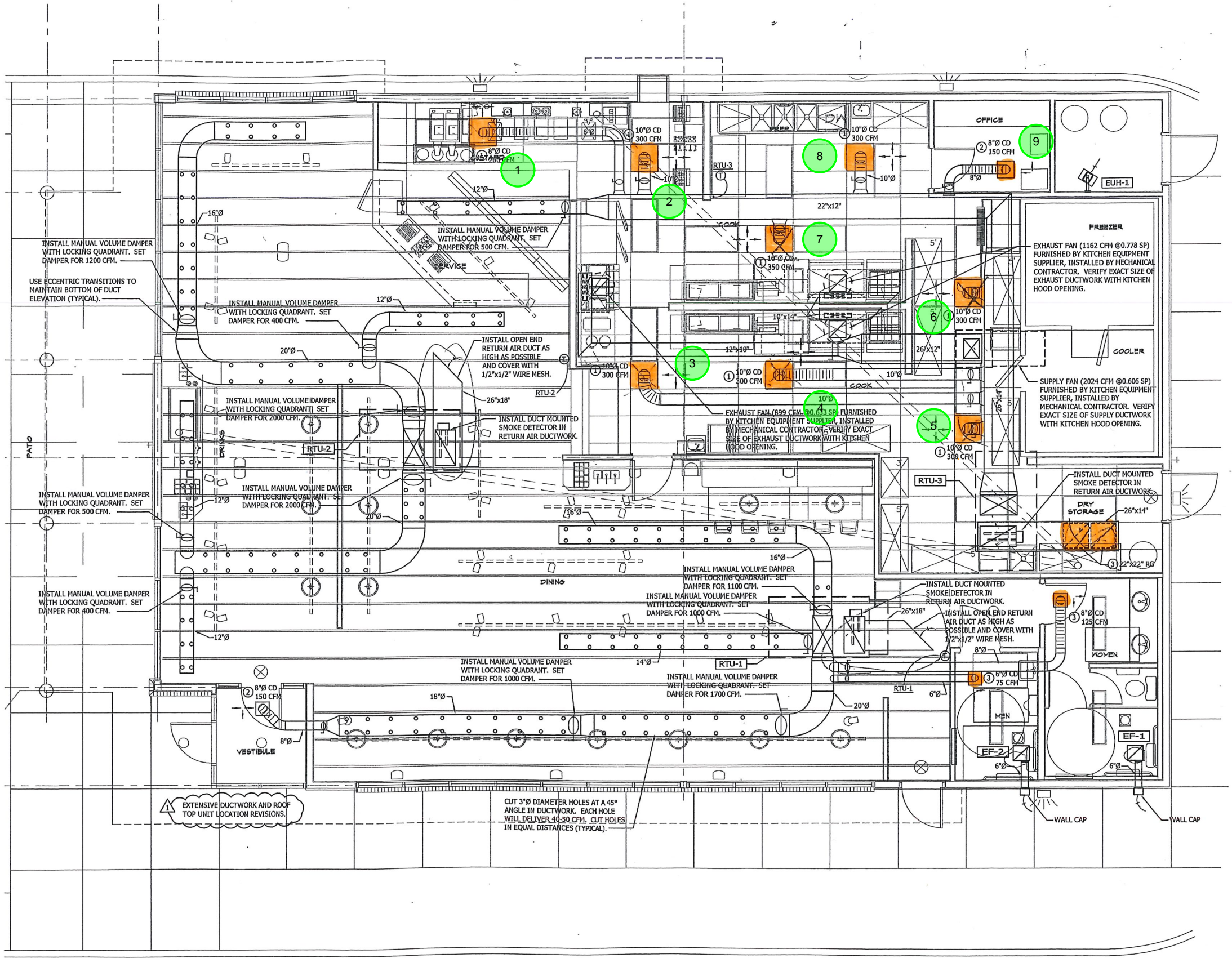
DRAWN BY:
 JA
 CHECKED BY:
 MJ

MECHANICAL GENERAL NOTES

- CONTRACTOR SHALL FIELD VERIFY ALL EXISTING JOB CONDITIONS PRIOR TO STARTING WORK, ORDERING EQUIPMENT, FABRICATION OF MATERIALS, ETC.
- THE MECHANICAL CONTRACTOR SHALL COMPLY AND INSTALL ALL WORK IN ACCORDANCE TO THE MECHANICAL, PLUMBING, BUILDING, LOCAL AND STATE CODES. CONTRACTOR SHALL SECURE AND PAY FOR PERMITS, FEES, AND CERTIFICATES OF INSPECTION INCIDENTAL TO WORK REQUIRED.
- THE MECHANICAL DRAWINGS ARE DIAGRAMMATIC AND ARE INTENDED TO SHOW APPROXIMATE LOCATIONS OF EQUIPMENT, DUCTWORK, PIPING, ETC. EXACT LOCATIONS SHALL BE COORDINATED WITH THE WORK OF OTHER TRADES. ARCHITECT / ENGINEER RESERVES THE RIGHT TO MAKE MINOR CHANGES IN LOCATION OF PIPING AND EQUIPMENT UP TO THE TIME OF INSTALLATION WITHOUT ADDITIONAL COST.
- INSULATE ALL NON-SPIRAL SUPPLY AND RETURN DUCTS. LINE DUCTS WITH 1" THICK DUCT LINER FOR FIRST 20'-0", WRAP DUCT WITH 1 1/2" THICK DUCT WRAP. INSULATE OUTSIDE AIR DUCT WITH 2" THICK DUCT WRAP.
- SUPPORT ALL DUCTWORK AND ANCHOR TO BUILDING STRUCTURE PER CODE.
- SUBMIT SHOP DRAWINGS TO OWNER OR ARCHITECT ON EACH PIECE OF EQUIPMENT, DUCT ACCESSORIES, DUCT INSULATION, GRILLES, REGISTERS, DIFFUSERS, ETC. FOR REVIEW AND APPROVAL. SHOP DRAWINGS SHALL BE SUBMITTED FOR APPROVAL BEFORE INSTALLATION IN FIELD.
- FLEXIBLE DUCTWORK SHALL ONLY BE USED ON SUPPLY AIR RUNOUTS TO CONNECT SUPPLY AIR DUCTWORK WITH AIR DISTRIBUTION OUTLETS. FLEXIBLE DUCTWORK SHALL BEAR UL CLASS 1 AIR DUCT LABEL AS TESTED UNDER UL 181 AND REQUIRED NFPA 90A AS AN AIR DUCT OR CONNECTOR. FLEXIBLE DUCT RUNS SHALL NOT EXCEED 8'-0" IN LENGTH. SUPPORT FLEXIBLE DUCT WITH HANGERS RECOMMENDED BY THE MANUFACTURER AT INTERVALS RECOMMENDED PER SMACNA "MANUAL ON HVAC DUCT CONSTRUCTION STANDARDS".
- ALL DUCTWORK SHALL BE SHEETMETAL, UNLESS OTHERWISE NOTED ON DRAWINGS. FIBERGLASS DUCT (DUCTBOARD) IS NOT ALLOWED.
- DO NOT ROUTE DUCTWORK, PIPING, ETC. ABOVE ELECTRICAL PANELS. COORDINATE WITH ELECTRICAL CONTRACTOR.
- ALL EXPOSED SUPPLY DUCTWORK SHALL BE OF SPIRAL CONSTRUCTION, AND PAINTED TO MATCH STRUCTURE. INSTALL EXPOSED DUCTWORK BELOW JOISTS, AND MAINTAIN CONSISTENT BOTTOM OF DUCT ELEVATION.

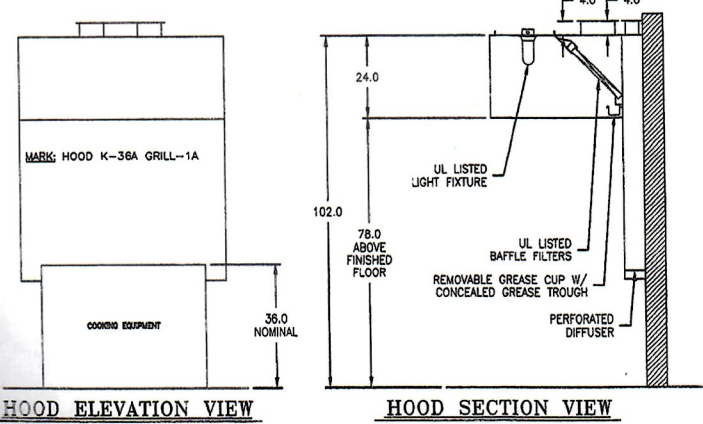
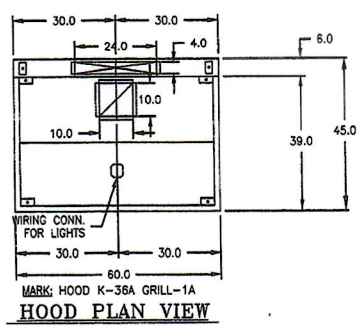
KITCHEN GENERAL NOTES

- REFER TO KITCHEN EQUIPMENT SUPPLIER DRAWINGS FOR ADDITIONAL REQUIREMENTS AND COORDINATION.
- INTERLOCK KITCHEN HOODS EXHAUST FAN WITH ROOFTOP UNIT SERVING KITCHEN, SO RTU WILL RUN WHEN EXHAUST FAN IS RUNNING.
- EXHAUST DUCTS SERVING THREE KITCHEN HOODS SHALL BE ENCLOSED IN 1 HR. FIRE RATED CHASE PER CODE REQUIREMENTS, SEE ARCH. DRAWINGS.
- EXHAUST DUCTS SERVING KITCHEN HOOD SHALL BE CONSTRUCTED, SUPPORTED, AND PROVIDED WITH CLEANOUTS AND ACCESS DOORS TO MEET THE REQUIREMENTS OF THE BUILDING AND MECHANICAL CODES.
- PROVIDE HORIZONTAL GREASE DUCTS FROM KITCHEN HOOD WITH OPENINGS AND ACCESS DOORS LOCATED ON TOP OR SIDE OF DUCT AT 12'-0" INTERVALS AND EVERY CHANGE IN DIRECTION PER NFPA 96-4-3.1, 4-3.4.1. GREASE DUCT AND ACCESS PANELS SHALL BE CONSTRUCTED OF AND SUPPORTED BY CARBON STEEL NOT LESS THAN 0.054 IN. (NO. 16 MSG) IN THICKNESS OR STAINLESS STEEL NOT LESS THAN 0.043 IN. (NO. 18 MSG) IN THICKNESS. ACCESS DOORS SHALL HAVE A GASKET OR SEALANT THAT IS RATED FOR 1500°F. AND SHALL BE GREASE TIGHT, PER NFPA 96-4-3.4.4 & 4-5.1.

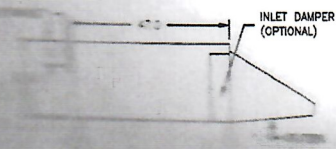
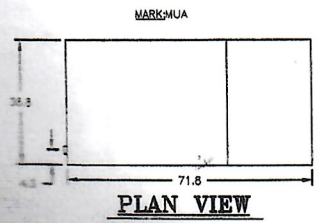


A FLOOR PLAN
 1/4" = 1'-0"
 NORTH

Freddy, Edmond



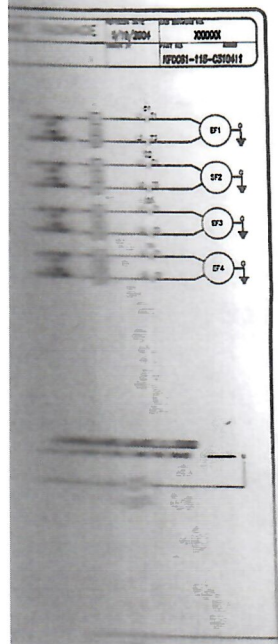
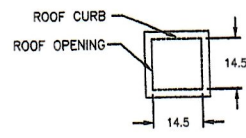
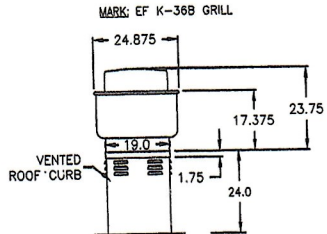
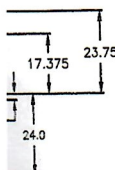
EQUIPMENT SCHEDULE					
KITCHEN HOOD MARK: HOOD K-27 FRYERS-1A QTY. 1					
MODEL NO.	LENGTH (IN)	WIDTH (IN)	HEIGHT (IN)	WEIGHT (LB)	
GHEW-4.33-S	52.000	39	24	134	
PERFORMANCE	VOLUME (CFM)	SP (IN WC)	DUCT COLLAR SIZE (IN)	DUCT COLLAR VEL. (FT/M)	FILTER FACE VEL. (FT/M)
EXHAUST (TOTAL)	689	0.433	(1) 9" X 9"	1998	173
SUPPLY (TOTAL)	584	0.140	(1) 4" X 24"	877	N/A
18 GAUGE TYPE 430 STAINLESS STEEL WHERE EXPOSED					
U.L. LISTED WITHOUT FIRE DAMPER - UL FILE NUMBER MH11726					
U.L. TEMPERATURE RATING (800 DEGREES F)					
(3) 20" X 18" ALUMINUM BAFFLE GREASE FILTERS					
(1) INCANDESCENT LIGHT FIXTURES - 20 FOOT CANDLES					
GREASE CUP MOUNTED ON RIGHT END OF HOOD					
DUCT COLLARS W/ MOUNTING FLANGE (EXHAUST = 1", SUPPLY = 1/2")					
BACK SUPPLY PLENUM OPTION (52 IN.) - INSULATED					
SWITCHES PROVIDED BY OTHERS					
KITCHEN HOOD MARK: HOOD K-36A GRILL-1A QTY. 1					
MODEL NO.	LENGTH (IN)	WIDTH (IN)	HEIGHT (IN)	WEIGHT (LB)	
GHEW-5.00-S	60.000	39	24	155	
PERFORMANCE	VOLUME (CFM)	SP (IN WC)	DUCT COLLAR SIZE (IN)	DUCT COLLAR VEL. (FT/M)	FILTER FACE VEL. (FT/M)
EXHAUST (TOTAL)	1163	0.478	(1) 10" X 10"	1674	174
SUPPLY (TOTAL)	720	0.140	(1) 4" X 24"	1081	N/A
18 GAUGE TYPE 430 STAINLESS STEEL WHERE EXPOSED					
U.L. LISTED WITHOUT FIRE DAMPER - UL FILE NUMBER MH11726					
U.L. TEMPERATURE RATING (800 DEGREES F)					
(3) 20" X 20" ALUMINUM BAFFLE GREASE FILTERS					
(1) INCANDESCENT LIGHT FIXTURES - 20 FOOT CANDLES					
GREASE CUP MOUNTED ON RIGHT END OF HOOD					
DUCT COLLARS W/ MOUNTING FLANGE (EXHAUST = 1", SUPPLY = 1/2")					
BACK SUPPLY PLENUM OPTION (60 IN.) - INSULATED					
SWITCHES PROVIDED BY OTHERS					
MAKE-UP AIR UNIT MARK: MUA QTY. 1					
MODEL NO.	VOLUME (CFM)	SP (IN WC)	FAN RPM	WEIGHT (LB)	MOTOR SPECS
KSRB-109-H15	2024	0.806	1056	70	1 115/ /1 1725
20					
CURB GPI-30/45.25-G12					
UL/CUL-705 - "POWER VENTILATORS"					
NEMA3R DISCONNECT INCLUDED					



Freddy's Edmond

EQUIPMENT SCHEDULE									
EXHAUST FAN					MARK: EF K-27 FRYER		QTY. 1		
MODEL NO.	VOLUME (CFM)	SP (IN WC)	FAN RPM	WEIGHT (LB)	MOTOR SPECS		RPM		
CUBE-101-4	899	0.633	1464	58	0.25	115/60/1	1725		
SWITCH - NEMA-1, TOGGLE, JUNCTION BOX MOUNTED AND									
HEAT BAFFLE									
UL/CUL-762 - 'POWER VENT. FOR REST. EXH. APPLIANCES'									
CURB GPV-19-024									
HINGED CURB CAP KIT WITH CABLES									
GREASE TRAP WITH DRAIN CONNECTION									
ALUMINUM WHEEL CONSTRUCTION									
EXHAUST FAN					MARK: EF K-36A GRILL		QTY. 1		
MODEL NO.	VOLUME (CFM)	SP (IN WC)	FAN RPM	WEIGHT (LB)	MOTOR SPECS		RPM		
CUBE-101-3	1162	0.778	1767	58	0.333	115/60/1	1725		
SWITCH - NEMA-1, TOGGLE, JUNCTION BOX MOUNTED AND									
HEAT BAFFLE									
UL/CUL-762 - 'POWER VENT. FOR REST. EXH. APPLIANCES'									
CURB GPV-19-024									
HINGED CURB CAP KIT WITH CABLES									
GREASE TRAP WITH DRAIN CONNECTION									
ALUMINUM WHEEL CONSTRUCTION									
EXHAUST FAN					MARK: EF K-36B GRILL		QTY. 1		
MODEL NO.	VOLUME (CFM)	SP (IN WC)	FAN RPM	WEIGHT (LB)	MOTOR SPECS		RPM		
CUBE-101-3	1162	0.778	1767	58	0.333	115/60/1	1725		
SWITCH - NEMA-1, TOGGLE, JUNCTION BOX MOUNTED AND									
HEAT BAFFLE									
UL/CUL-762 - 'POWER VENT. FOR REST. EXH. APPLIANCES'									
CURB GPV-19-024									
HINGED CURB CAP KIT WITH CABLES									
GREASE TRAP WITH DRAIN CONNECTION									
ALUMINUM WHEEL CONSTRUCTION									

WILL



ESSENTIAL
 Please return this equipment only to your distributor.
 Requirements including signature, date and address to all
 equipment, parts, and accessories. Installation will not
 begin until after approval coverage is received.

APPROVED: [Signature]
 APPROVED: [Signature]
 APPROVED: [Signature]

DESCRIPTION

GREENHECK

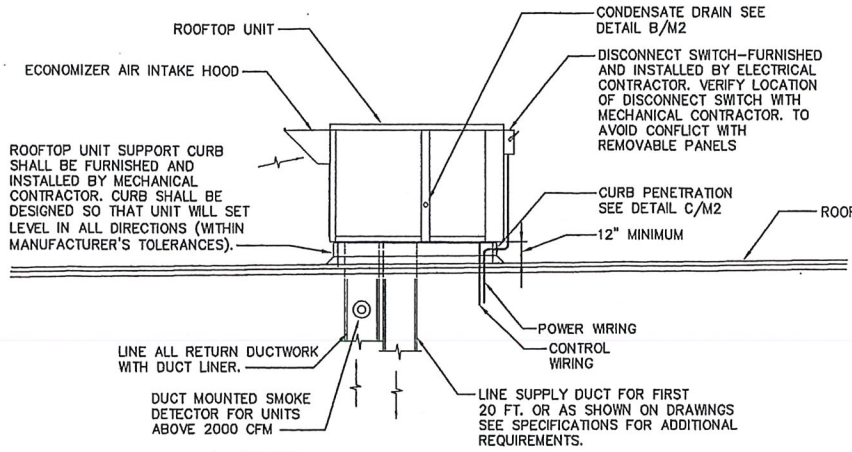
FREDDY'S CHAIN

DATE: 08/24/2009
 TIME: 10:47:47
 C133618

ROOFTOP UNIT SCHEDULE (GAS HEATING)

MARK	AREA SERVED	MANUF.	MODEL #	FAN SECTION					COOLING COIL CAPACITY			CONDENSER SECTION		GAS HEATING SECTION		COMBUSTION FAN MOTOR FLA	EER	POWER SUPPLY			APPROX. WEIGHT					
				C.F.M.	MIN. O.S.A.	EXT. STATIC PRESS.	FAN H.P.	DRIVE	TONS	SENSIBLE	TOTAL	ENT. AIR DB	WB	AMB. TEMP.	FAN NO.			FLA	COMPRESS. NO.	RLA		INPUT	OUTPUT	VOLTAGE		
RTU #1	DINING	TRANE	YSC120A3EMAF000C	4000	1280	1.2	3.0	BELT	10.0	91,200	117,000	80	67	95	1	4.0	2	18.6 EA	200,000	162,000	5.7	10.2	52.6	60	208/30/60	1300
RTU #2	DINING	TRANE	YSC120A3EMAF000C	4000	1280	1.2	3.0	BELT	10.0	91,200	117,000	80	67	95	1	4.0	2	18.6 EA	200,000	162,000	5.7	10.2	52.6	60	208/30/60	1300
RTU #3	KITCHEN	TRANE	YSC092A3EMAA000C	3000	900	1.0	2.0	BELT	7.5	71,100	92,000	80	67	95	1	3.85	2	14.7 EA	150,000	121,500	5.7	10.4	38.9	50	208/30/60	1200

- NOTES:
- FURNISH RTU #1 & 2 WITH ENTHALPHY CONTROLLED ECONOMIZER. PROVIDE SPRING RETURN DAMPERS TO CLOSE OUTSIDE AIR DAMPERS WHEN UNIT IS OFF.
 - PROVIDE ROOFTOP UNIT SUPPORT CURB FURNISHED WITH THE UNIT. CURB SHALL BE PRE-ENGINEERED TO FIT ROOF SLOPE SO THAT UNIT WILL SET LEVEL IN ALL DIRECTIONS.
 - UNITS TO BE FURNISH WITH 7-DAY PROGRAMMABLE THERMOSTAT WITH LOCKING COVER.
 - FURNISH RTU #3 WITH MANUAL OUTDOOR-AIR DAMPER.



- NOTES:
- ALL SERVICES AND CONNECTIONS MUST BE MADE INSIDE PERIMETER CURB.
 - DISCONNECT SWITCHES, BRACKETS, AND CONDUIT MUST BE CLEAR OF ALL UNIT PANELS AND AIR FLOWS. BRACKETS MUST BE ATTACHED TO STRUCTURAL MEMBERS OF THE UNIT.

A TYPICAL ROOFTOP UNIT INSTALLATION DETAIL

NO SCALE

EXHAUST FAN SCHEDULE

MARK	TYPE	MANUF.	MODEL #	AREA SERVED	MIN. CAPACITY		SOUND LEVEL (SONE)	TIP SPEED	DRIVE	R.P.M.	MOTOR		REMARKS	
					C.F.M.	S.P.					MAX. WATTS INPUT	HP		VOLTAGE
EF-1	CEILING	COOK	GC-180	WOMENS	150	0.25	3.1	1979	DIRECT	991	42.88	--	120/10/60	SEE NOTES #1, 2, 3, 4
EF-2	CEILING	COOK	GC-160	MENS	100	0.25	2.3	1788	DIRECT	976	24.59	--	120/10/60	SEE NOTES #1, 2, 3, 4

- NOTES:
- DUCT CONNECTIONS, WALL CAPS, ROOF CAPS, AND FLASHING BY THE MECHANICAL CONTRACTOR.
 - FURNISH EXHAUST FAN WITH WALL CAP.
 - INTERLOCK EXHAUST FAN WITH LIGHTS.
 - EXHAUST FAN MOTOR SHALL HAVE BUILT IN OVERLOAD PROTECTION AND PLUG IN DISCONNECT.

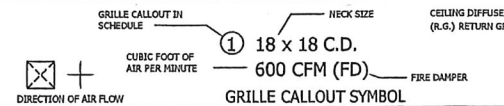
ELECTRIC UNIT HEATER SCHEDULE

MARK	MANUF.	MODEL #	TYPE	AREA SERVED	K.W.	BTU/HR	C.F.M.	STEPS	AMPS.	VOLTAGE	REMARKS
EUH #1	QMARK	MUH-03-B	PROPELLER	MECH. ROOM	3.0	10,200	350	1	14.5	208/10/60	SEE NOTES #1, 2

- NOTES:
- FURNISH HEATER WITH INTEGRAL THERMOSTAT AND BUILT-IN DISCONNECT SWITCH.
 - FURNISH HEATER WITH UNIVERSAL WALL MOUNTING BRACKET MODEL.

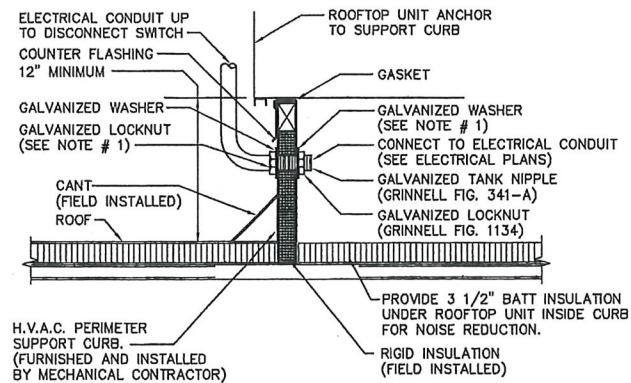
GRILLE AND REGISTER SCHEDULE

MARK	TYPE	MANUF. BASED ON	MODEL NO. AND ACCESSORIES	MOUNTING	FINISH	REMARKS
①	CEILING DIFFUSER	TITUS	TDC STEEL W/OPOSED BLADE DAMPER MODEL AG-100 & BORDER TYPE 3	LAY-IN	OFF-WHITE	PAINT TO MATCH ADJACENT SURFACE, 12"x12" OR 24"x24" MODULE SEE PLANS
②	CEILING DIFFUSER	TITUS	TDC STEEL W/OPOSED BLADE DAMPER MODEL AG-100 & BORDER TYPE 1	SURFACE	OFF-WHITE	PAINT TO MATCH ADJACENT SURFACE
③	RETURN GRILLE	TITUS	350RL W/BORDER TYPE 3	LAY-IN	OFF-WHITE	35" LOUVERS @ 3/4" SPACING, PAINT TO MATCH ADJACENT SURFACE



BLDG. AIR BALANCE

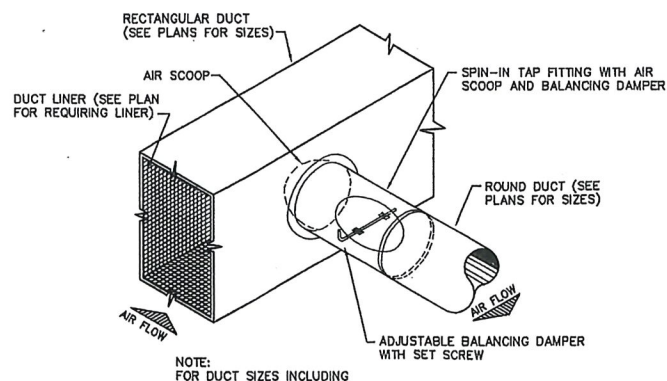
UNIT	TOTAL CFM OUTSIDE AIR	TOTAL CFM EXHAUST	AIR DIFFERENCE (CFM)
RTU-1	1280	--	+1280
RTU-2	1280	--	+1280
RTU-3	900	--	+900
KITCHEN HOOD EXHAUST FAN	--	899	-899
KITCHEN HOOD EXHAUST FAN	--	1162	-1162
KITCHEN HOOD EXHAUST FAN	--	1162	-1162
KITCHEN HOOD (GRILL) SUPPLY FAN	720	--	+720
KITCHEN HOOD (GRILL) SUPPLY FAN	720	--	+720
KITCHEN HOOD (FRYERS) SUPPLY FAN	584	--	+584
EF-1	--	150	-150
EF-2	--	100	-100
TOTAL	+5484	-3473	+2011



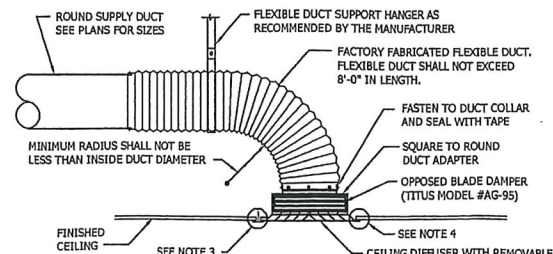
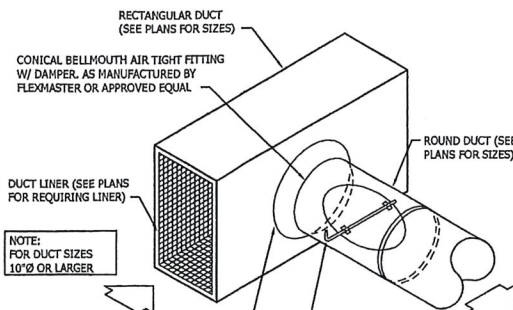
- NOTES:
- NEOPRENE GASKET SET IN MASTIC APPLIED OVER COUNTER FLASHING. CAULK WATERTIGHT ALL AROUND.
 - SEE ARCHITECTURAL DETAILS FOR ADDITIONAL REQUIREMENTS.

C CURB PENETRATION DETAIL

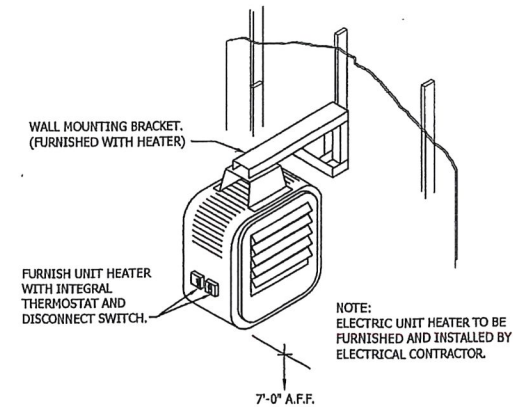
NO SCALE



B NOT USED



- NOTE:
- CEILING DIFFUSERS SHALL BE SQUARE FACE, ROUND NECK TYPE.
 - DIFFUSER FRAMES WITH EXTENDED PANELS NOT ACCEPTABLE.
 - PROVIDE LAY-IN TYPE DIFFUSER FRAME FOR INVERTED T BAR CEILING SYSTEMS. (EXTENDED PANELS ON DIFFUSER FRAMES NOT ACCEPTABLE.)
 - PROVIDE SURFACE MOUNTING FLANGE FOR SHEET ROCK CEILING AND OTHER SPECIAL CEILING.
 - FLEX-DUCT SHALL BE SCREWED AND TAPED TO DUCT COLLAR AND DIFFUSER



G UNIT HEATER DETAIL

NO SCALE



THE DESIGN AND DETAILS DISCLOSED HEREIN ARE THE EXCLUSIVE PROPERTY OF WINTER ARCHITECTS INC. AND SHALL NOT BE COPIED OR REPRODUCED IN WHOLE OR IN PART WITHOUT ITS PRIOR WRITTEN CONSENT.

DAN WINTER, ARCHITECT

FREDDY'S FROZEN CUSTARD
 EDMOND ROAD
 EDMOND, OKLAHOMA



WINTER ARCHITECTS

1024 EAST FIRST STREET
 WICHITA, KS. 67214
 PH. 316-267-7142

MECHANICAL SCHEDULES AND DETAILS

DATE
 9/13/05
 12/30/05

DRAWN BY: JA
 CHECKED BY: MJ