

HOOD INFORMATION – JOB#5790792

HOOD NO	TAG	MODEL	MANUFACTURER	LENGTH	MAX COOKING TEMP	TYPE	APPLIANCE DUTY	DESIGN CFM/FT	TOTAL EXH CFM	EXHAUST PLENUM RISER(S)						TOTAL SUPPLY CFM	HOOD CONSTRUCTION	HOOD CONFIG		
										WIDTH	LENG	HEIGHT	DIA	CFM	VEL			SP	END TO END	ROW
1	HD1	4830 ND-2-PSP-F	CAPTIVEAIRE	12' 0"	600 DEG	I	HEAVY	217	2600			4'	16'	2600	1862	-0.935'	2200	430 SS WHERE EXPOSED	ALONE	ALONE

PATENT NUMBERS

AC-PSP (UNITED STATES) – US PATENT 7963830 B2.
 AC-PSP WALL (CANADA) – CA PATENT 2820509.
 AC-PSP ISLAND (CANADA) – CA PATENT 2520330.

HOOD INFORMATION

HOOD NO	TAG	FILTER(S)				LIGHT(S)				UTILITY CABINET(S)				FIRE SYSTEM	HOOD HANGING WEIGHT		
		TYPE	QTY	HEIGHT	LENGTH	EFFICIENCY @ 7 MICRONS	QTY	TYPE	WIRE GUARD	LOCATION	SIZE	TYPE	SIZE			ELECTRICAL MODEL #	SWITCHES QUANTITY
1	HD1	CAPTRATE SOLID FILTER	9	20"	16"	85% SEE FILTER SPEC	6	L55 SERIES E26	NO	LEFT	12"x48"x30"	TANK FS	4.0/4.0			YES	987 LBS

HOOD OPTIONS

HOOD NO	TAG	OPTION
1	HD1	FIELD WRAPPER 7.00' HIGH FRONT, LEFT, RIGHT. BACKSPLASH 80.00" HIGH X 156.00" LONG 430 SS VERTICAL. BACKSPLASH 116.00" HIGH X 18.00" LONG 430 SS VERTICAL. BACKSPLASH 116.00" HIGH X 18.00" LONG 430 SS VERTICAL. RIGHT QUARTER END PANEL 23' TOP WIDTH, 0' BOTTOM WIDTH, 23' HIGH 430 SS. LEFT QUARTER END PANEL 23' TOP WIDTH, 0' BOTTOM WIDTH, 23' HIGH 430 SS. STRUCTURAL FRONT PANEL. SENSDR-CV.

PERFORATED SUPPLY PLENUM(S)

HOOD NO	TAG	POS	LENGTH	WIDTH	HEIGHT	TYPE	RISER(S)				
							WIDTH	LENG	DIA	CFM	SP
1	HD1	Front	156'	14'	6'	MUA	12"	24"		733	0.236"
						MUA	12"	24"		733	0.236"
						MUA	12"	24"		733	0.236"

SPECIFICATION: CAPTRATE® GREASE-STOP® SOLID FILTER

THE CAPTRATE GREASE-STOP SOLID FILTER IS A SINGLE-STAGE FILTER FEATURING A UNIQUE S-Baffle DESIGN IN CONJUNCTION WITH A SLOTTED REAR Baffle DESIGN, TO DELIVER EXCEPTIONAL FILTRATION EFFICIENCY.

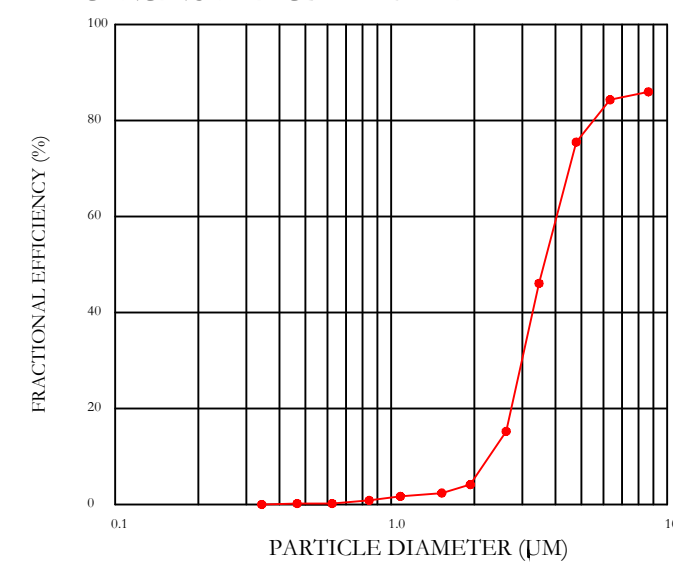
FILTER IS STAINLESS STEEL CONSTRUCTION, AND SIZED TO FIT INTO STANDARD 2-INCH DEEP HOOD CHANNEL(S).

UNITS SHALL INCLUDE STAINLESS STEEL HANDLES AND A FASTENING DEVICE TO SECURE THE TWO COMPONENTS WHEN ASSEMBLED.

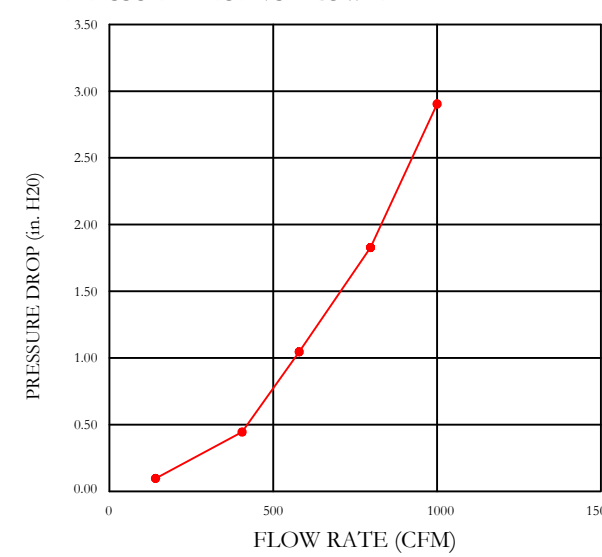
GREASE EXTRACTION EFFICIENCY PERFORMANCE SHALL REMOVE AT LEAST 75% OF GREASE PARTICLES FIVE MICRONS IN SIZE, AND 85% GREASE PARTICLES SEVEN MICRONS IN SIZE AND LARGER, WITH A CORRESPONDING PRESSURE DROP NOT TO EXCEED 1.0 INCHES OF WATER GAUGE.

THE CAPTRATE GREASE-STOP SOLID WAS TESTED TO ASTM STANDARD ASTM F2519-05. MANUFACTURER APPROVED FOR USE IN SOLID FUEL APPLICATIONS AS A SPARK ARRESTER.

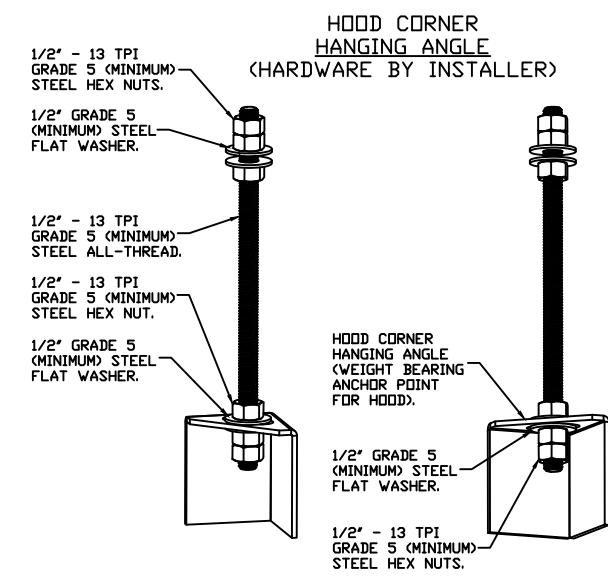
EFFICIENCY VS. PARTICLE DIAMETER



PRESSURE DROP VS. FLOW RATE

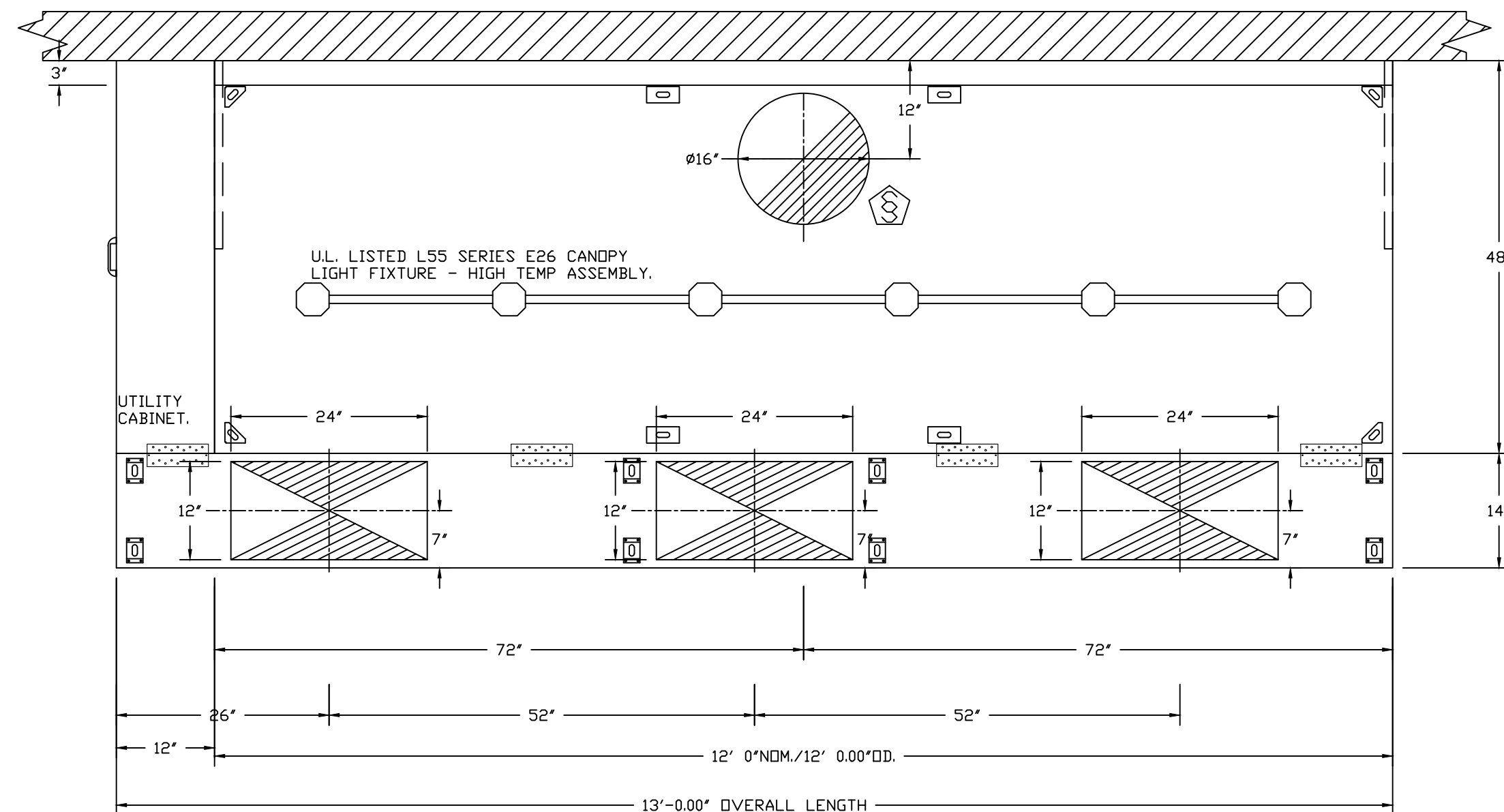


CAPTRATE FILTERS ARE BUILT IN COMPLIANCE WITH:
 NFPA #96.
 NSF STANDARD #2.
 UL STANDARD #1046.
 INT. MECH. CODE (IMC).
 ULC-S649.

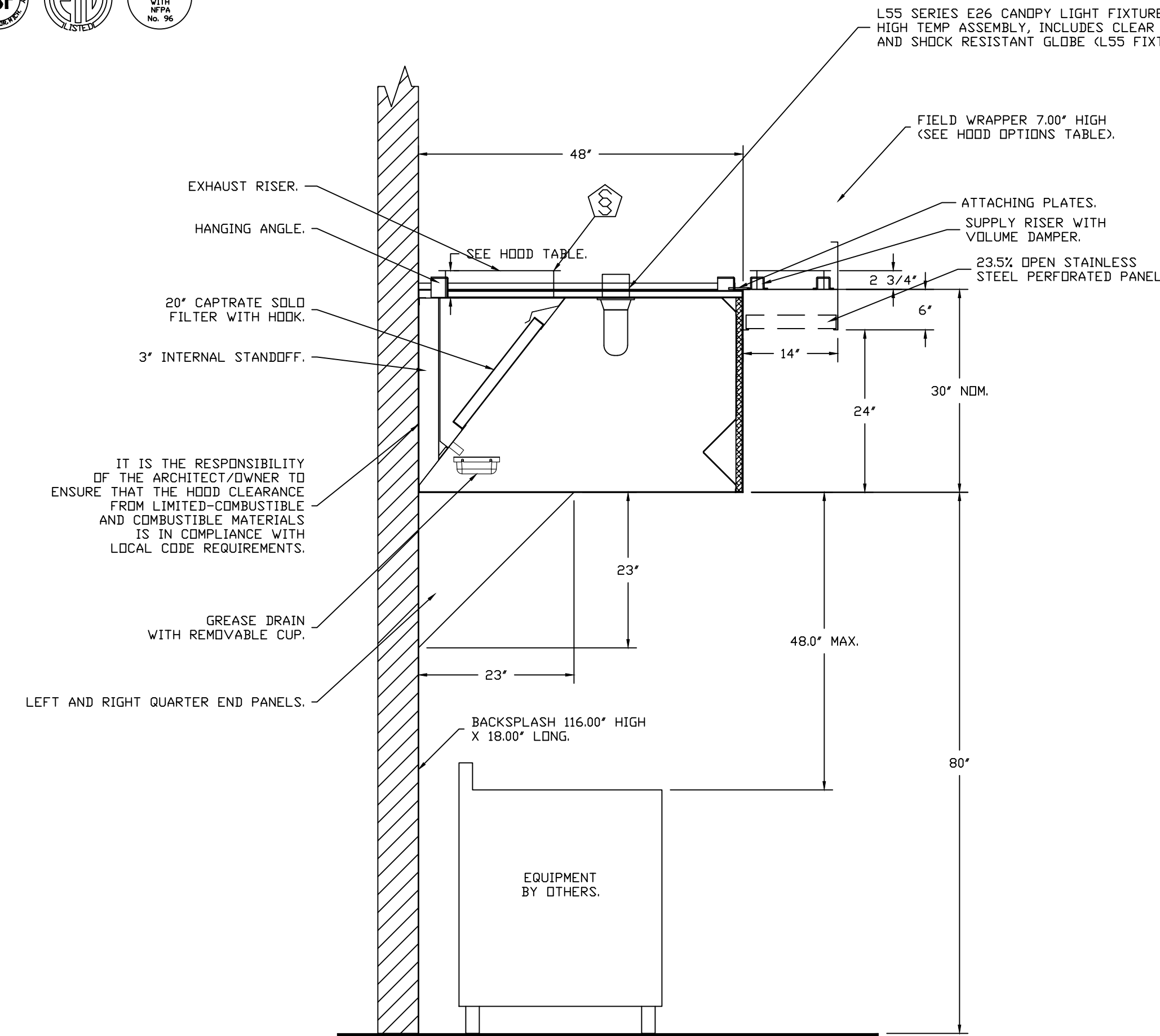


ASSEMBLY INSTRUCTIONS

HANGING ANGLE MUST BE SUPPORTED WITH 1/2" - 13 TPI GRADE 5 (MINIMUM) ALL-THREAD, SANDWICH HANGING ANGLES AND CEILING ANCHOR POINTS WITH 1/2" GRADE 5 (MINIMUM) STEEL FLAT WASHERS AND 1/2" - 13 TPI GRADE 5 (MINIMUM) HEX NUTS AS SHOWN. MUST USE DOUBLED HEX NUT CONFIGURATION BENEATH HOOD HANGING ANGLES AND ABOVE CEILING ANCHORS. MAINTAIN 1/4" OF EXPOSED THREADS BENEATH BOTTOM HEX NUT. TORQUE ALL HEX NUTS TO 57 FT-LBS.



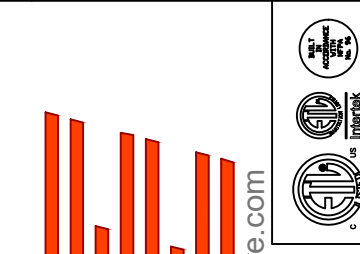
PLAN VIEW – HOOD #1 (HD1)
 12' 0.00" LONG 4830ND-2-PSP-F
 NOTE: ADDITIONAL HANGING ANGLES PROVIDED FOR HOODS 12" AND LONGER.



SECTION VIEW – MODEL 4830ND-2-PSP-F
 HOOD – #1 (HD1)

REVISIONS

DESCRIPTION	DATE



CAPTIVE AIR SOLUTIONS
 www.captiveair.com
 1329 East Kemper Rd., Ste. 4210, Cincinnati, OH, 45246 PHONE: (513) 860-5555 EMAIL: reg121@captiveair.com

BW Bartow (Bronx, NY)
 2059 Bartow Avenue,
 Bronx, NY, 10475

DATE: 4/5/2023
 DWG.#: 5790792
 DRAWN BY: jcirilli
 SCALE: 3/4" = 1'-0"
 MASTER DRAWING

SHEET NO. 1

EXHAUST FAN INFORMATION – JOB#5790792

FAN UNIT NO	TAG	QTY	FAN UNIT MODEL #	MANUFACTURER	CFM	ESP	RPM	MOTOR ENCL	HP	BHP	PHASE	VOLT	FLA	DISCHARGE VELOCITY	WEIGHT (LBS)	SDNES
1	KEF 1	1	DUI180HFA	CAPTIVEAIRE	2600	1.350	1211	DDP,PREMIUM	2.000	1.2170	3	208	8.3	600 FPM	189	16.8

FAN OPTIONS

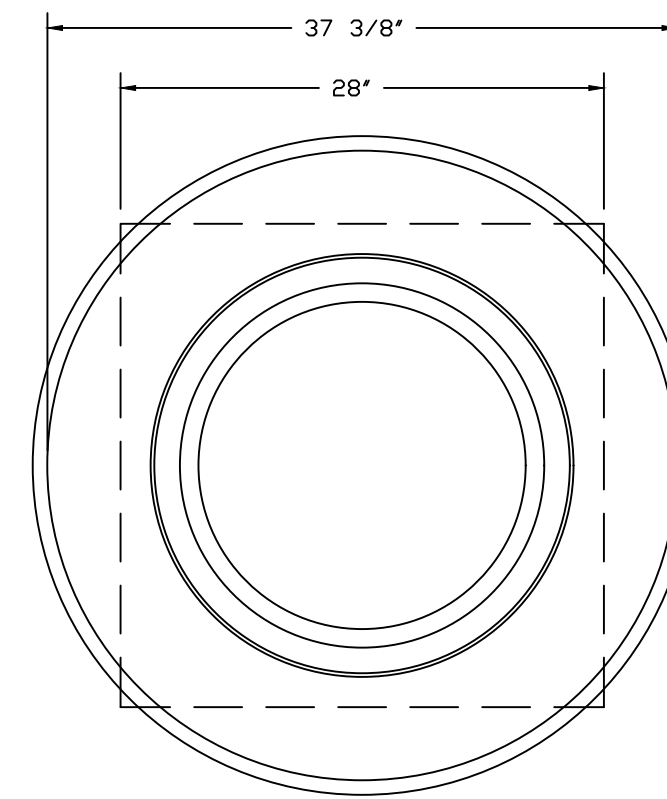
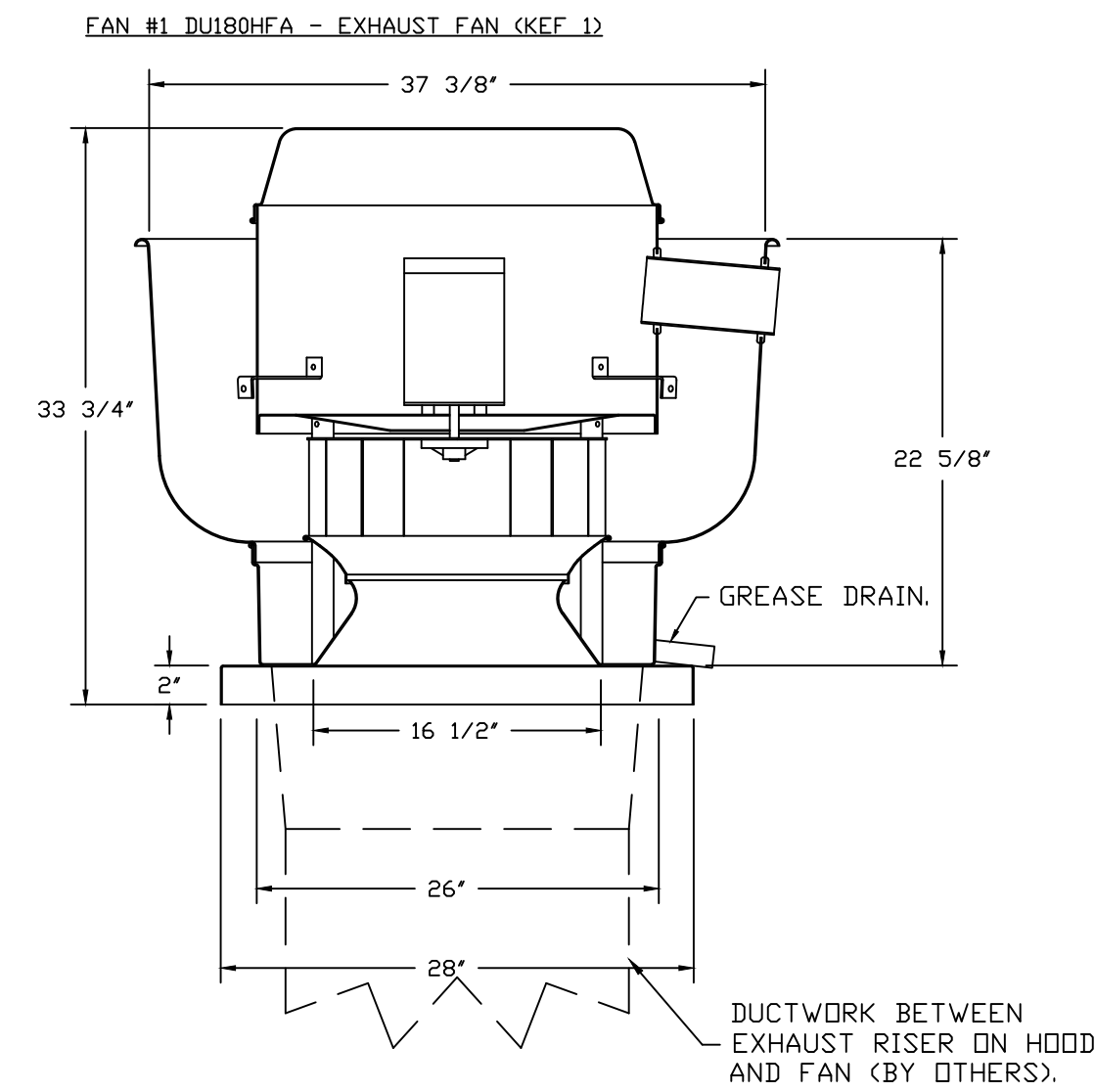
FAN UNIT NO	TAG	QTY	DESCRIPTION
1	KEF 1	1	GREASE BOX
		1	EXHAUST FAN HEAT BAFFLE
		1	FAN BASE CERAMIC SEAL – INSTALLED AT PLANT – FOR GREASE DUCTS
		1	2 YEAR PARTS WARRANTY
2	KSP-MPUI	1	SIZE 2 DIRECT FIRED HEATER LOW CFM PROFILE PACKAGE – USED ON HEATERS UNDER 2500 CFM
		1	INLET PRESSURE GAUGE, 0-35"
		1	MANIFOLD PRESSURE GAUGE, -5 TO 15" WC
		1	MOTORIZED BACKDRAFT DAMPER FOR A2-D HOUSING – MEETS AMCA CLASS 1A RATING
		1	5 TON SINGLE CIRCUIT MODULAR PACKAGED COOLING OPTION FOR SIZE 2 DF/EH MUA (2,000 TO 3,000 CFM), 208V/230V, 3 PHASE. COOLING THERMOSTAT OR PROGRAMMABLE STAT REQUIRED FOR PROPER OPERATION
		1	DOWNTURN PLENUM FOR SIZE 2 DX COIL MODULE
		1	SEPARATE 120V WIRING PACKAGE (REQUIRED AND USED ONLY FOR DCV OR PREWIRE WITH VFD) – THREE PHASE ONLY
		1	BUTTERFLY MOD VALVE OPTION FOR MOD SIZE 2 (1" MOD VALVE)
		1	2 YEAR PARTS WARRANTY

FAN ACCESSORIES

FAN UNIT NO	TAG	EXHAUST				SUPPLY			
		GREASE CUP	GRAVITY DAMPER	WALL MOUNT	SIDE DISCHARGE	GRAVITY DAMPER	MOTORIZED DAMPER	WALL MOUNT	
1	KEF 1	YES							
2	KSP-MPUI						YES		

CURB ASSEMBLIES

NO	ON FAN	TAG	WEIGHT	ITEM	SIZE
1	# 1	KEF 1	52 LBS	CURB	26.500"W X 26.500"L X 24.000"H ALONG LENGTH, RIGHT VENTED HINGED.
2	# 2	KSP-MPUI	107 LBS	CURB	31.000"W X 79.000"L X 20.000"H ALONG WIDTH, RIGHT INSULATED.
	# 2			RAIL	6.000"W X 31.000"L X 2.000"H RIGHT.



TOP VIEW

FEATURES:

- DIRECT DRIVE CONSTRUCTION (NO BELTS/PULLEYS).
- ROOF MOUNTED FANS.
- RESTAURANT MODEL.
- UL705 AND UL762 AND ULC-S645
- VARIABLE SPEED CONTRL.
- INTERNAL WIRING.
- THERMAL OVERLOAD PROTECTION (SINGLE PHASE).
- HIGH HEAT OPERATION 300°F (149°C).
- GREASE CLASSIFICATION TESTING.
- NEMA 3R SAFETY DISCONNECT SWITCH.

NORMAL TEMPERATURE TEST

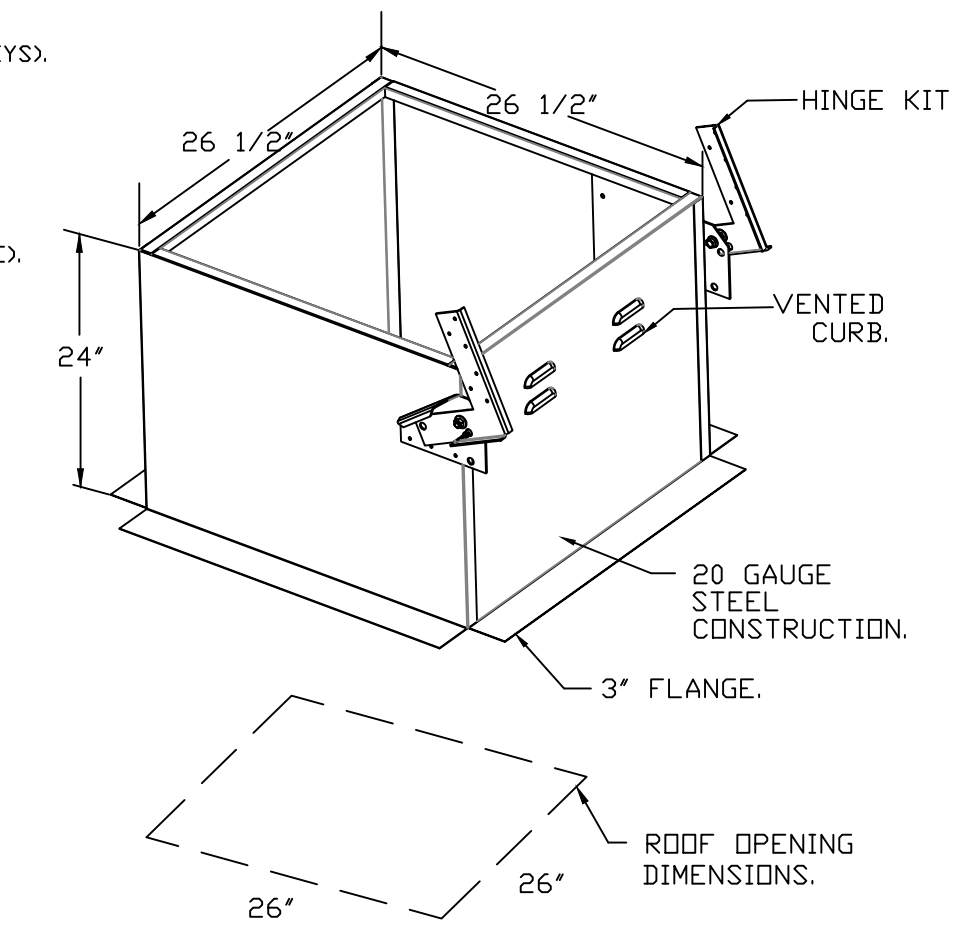
EXHAUST FAN MUST OPERATE CONTINUOUSLY WHILE EXHAUSTING AIR AT 300°F (149°C) UNTIL ALL FAN PARTS HAVE REACHED THERMAL EQUILIBRIUM, AND WITHOUT ANY DETERIORATING EFFECTS TO THE FAN WHICH WOULD CAUSE UNSAFE OPERATION.

ABNORMAL FLARE-UP TEST

EXHAUST FAN MUST OPERATE CONTINUOUSLY WHILE EXHAUSTING BURNING GREASE VAPORS AT 600°F (316°C) FOR A PERIOD OF 15 MINUTES WITHOUT THE FAN BECOMING DAMAGED TO ANY EXTENT THAT COULD CAUSE AN UNSAFE CONDITION.

OPTIONS

- GREASE BDX.
- EXHAUST FAN HEAT BAFFLE.
- FAN BASE CERAMIC SEAL – INSTALLED AT PLANT – FOR GREASE DUCTS.
- 2 YEAR PARTS WARRANTY.



REVISIONS	
DESCRIPTION	DATE

Air Solutions

1329 East Kemper Rd., Ste. 4210, Cincinnati, OH, 45246 PHONE: (513) 860-5555 EMAIL: reg12@captivaire.com

BW Bartow (Bronx, NY)
2059 Bartow Avenue,
Bronx, NY, 10475

DATE: 4/5/2023

DWG.#: 5790792

DRAWN BY: jcirilli

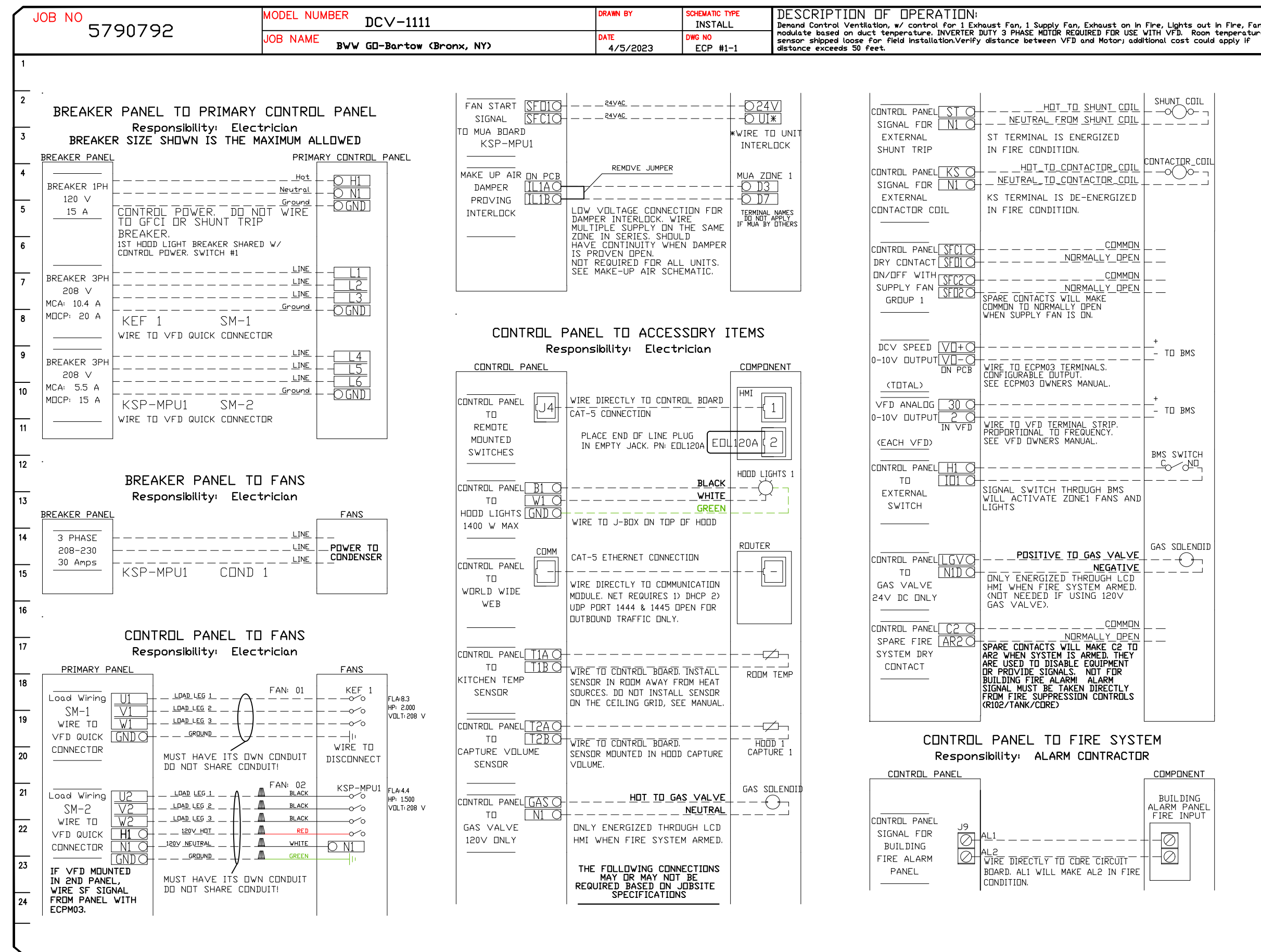
SCALE: 3/4" = 1'-0"

MASTER DRAWING

SHEET NO.
2

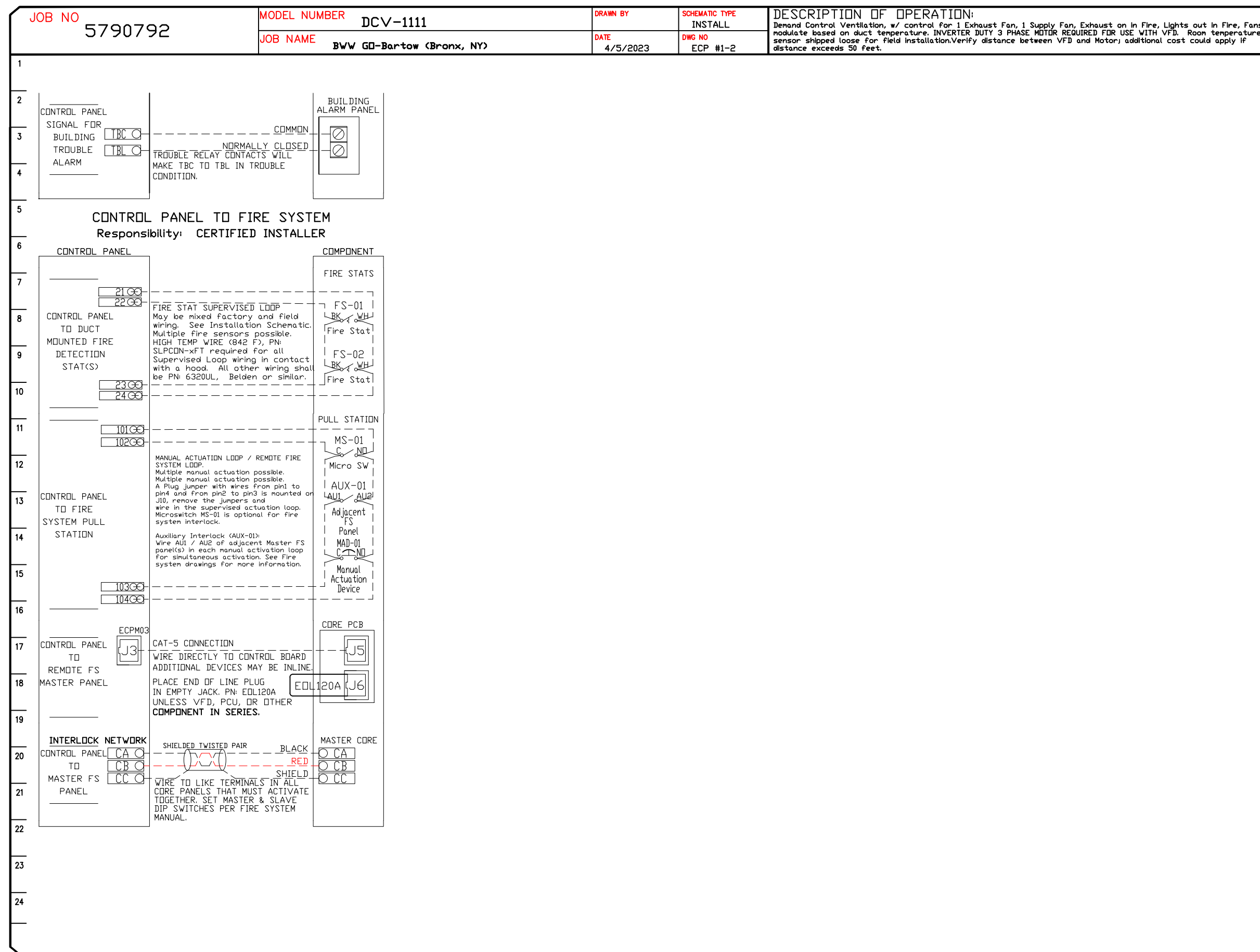
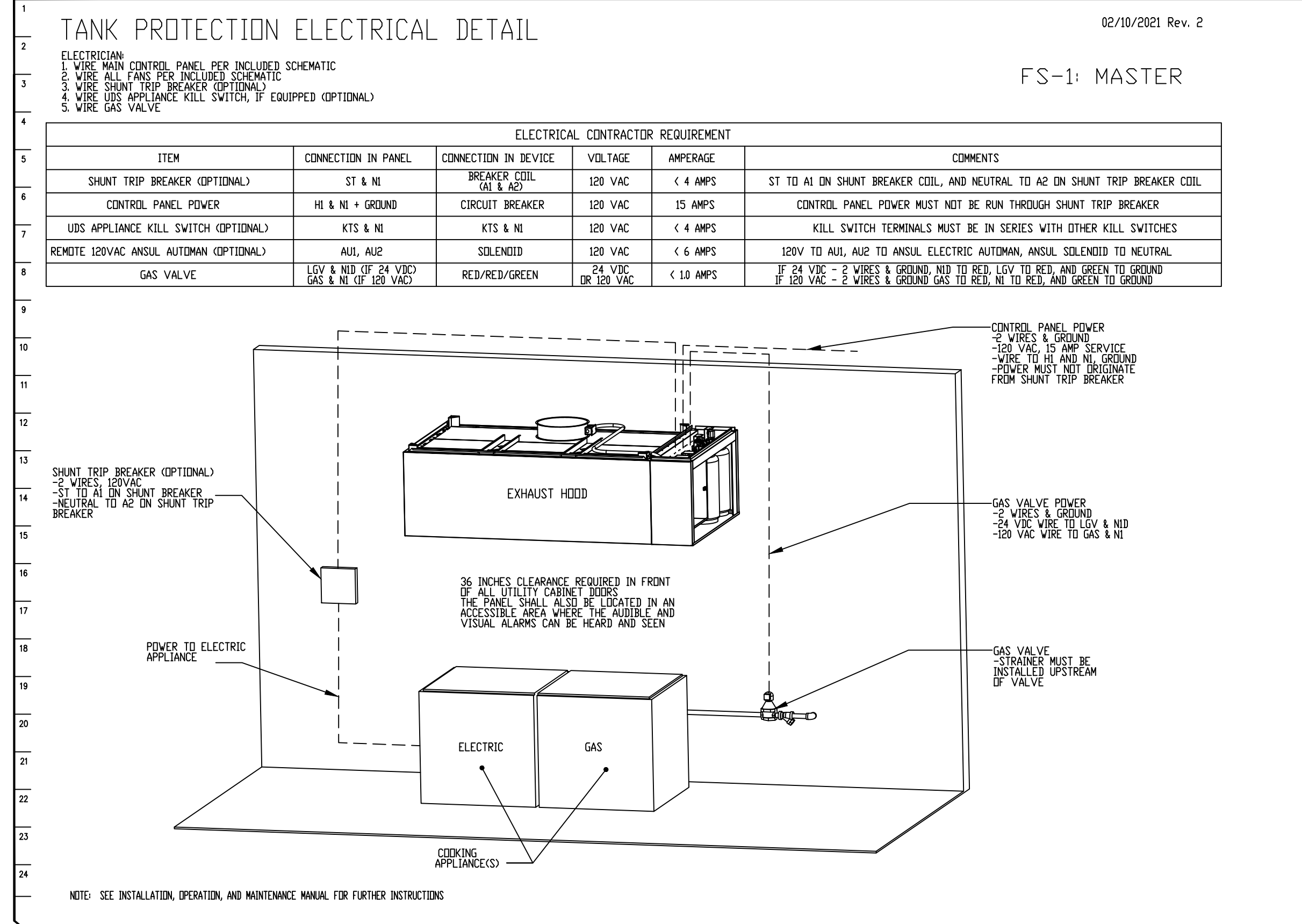
ELECTRICAL PACKAGE - JOB#5790792

NO	TAG	PACKAGE #	LOCATION	SWITCHES		OPTION	FANS CONTROLLED					
				LOCATION	QUANTITY		FAN TAG	TYPE	#	HP	VOLT	FLA
1	EMS1	DCV-1111	WALL MOUNT IN SS BOX	UTILITY CABINET LEFT	1 LIGHT 1 FAN	SMART CONTROLS DCV	KEF 1	EXHAUST	3	2.000	208	8.3
							KSP-MPU1	SUPPLY	3	1.500	208	4.4



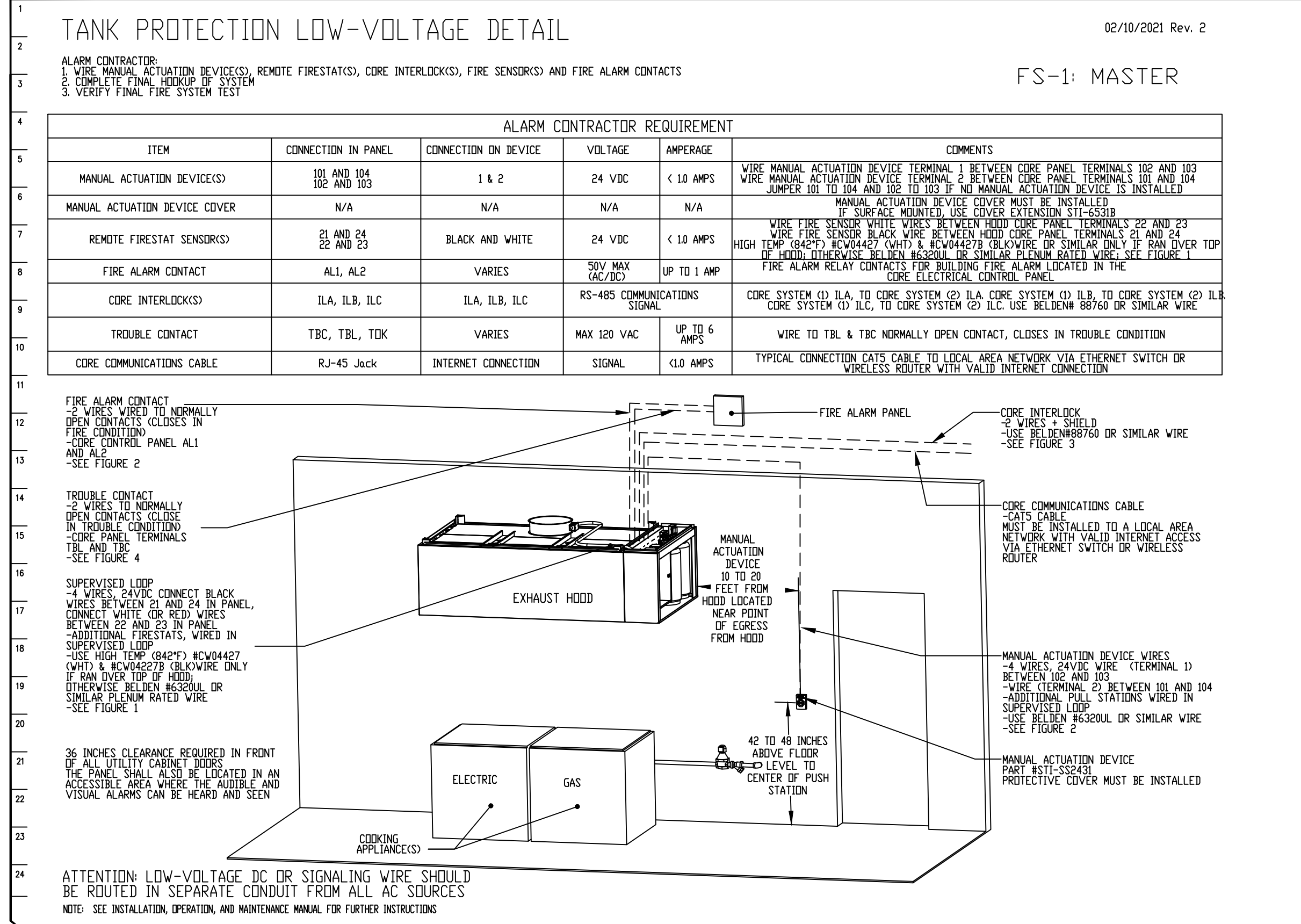
JOB NO 5790792 **MODEL NUMBER DCV-1111** **DESCRIPTION OF OPERATION:** Fire System w/ Tank FS - 40/40 TANK FS.

JOB NAME: BvW GD-Bartow (Bronx, NY) **DATE:** 4/5/2023 **DWG NO:** ECP #1-3



JOB NO 5790792 **MODEL NUMBER DCV-1111** **DESCRIPTION OF OPERATION:** Fire System w/ Tank FS - 40/40 TANK FS.

JOB NAME: BvW GD-Bartow (Bronx, NY) **DATE:** 4/5/2023 **DWG NO:** ECP #1-4



REVISIONS

DESCRIPTION	DATE

CAPTIVE

Air Solutions

www.captiveair.com

1329 East Kemper Rd., Ste. 4210, Cincinnati, OH, 45246 PHONE: (513) 860-5555 EMAIL: reg12@captivair.com

BvW GD-Bartow (Bronx, NY)
2059 Bartow Avenue,
Bronx, NY, 10475

DATE: 4/5/2023

DWG#: 5790792

DRAWN BY: jcirilli

SCALE: 3/4" = 1'-0"

MASTER DRAWING

SHEET NO. 4