



SUBMITTAL

Project

Walgreens (PR) - #5058 Arnold, MO

Date

Wednesday, June 4, 2025

Notes:

1. Ultra-Low Leak Economizer provided to meet ASHRAE 90.1-2013 Standard.
2. AES is the installer and is responsible for providing curb or curb adapters. No curbs or curb adapters have been provided on this quote and submittal package.
3. Hail guards provided as factory installed.
4. Demand control ventilation provided for RTU-2 and 3.

Table Of Contents

Project: Walgreens (PR) - #5058 Arnold, MO
Prepared By:

06/04/2025
09:36AM

| | |
|--------------------------|-----------|
| RTU-1 | 3 |
| Unit Report | 4 |
| Certified Drawing..... | 5 |
| Performance Summary..... | 8 |
| RTU-2 | 12 |
| Unit Report | 13 |
| Certified Drawing..... | 14 |
| Performance Summary..... | 17 |
| RTU-3 | 21 |
| Unit Report | 22 |
| Certified Drawing..... | 23 |
| Performance Summary..... | 26 |

RTU-1

Tag Cover Sheet
Unit Report
Certified Drawing
Performance Report

Unit Report For RTU-1

Project: Walgreens (PR) - #5058 Arnold, MO
 Prepared By:

06/04/2025
 09:36AM

Unit Parameters

Unit Model:..... **48GEFN12B3M5-3WAP0**
 Unit Size:..... **12 (10.0 Tons)**
 Volts-Phase-Hertz:..... **208-3-60**
 Heating Type:..... **Gas**
 Refrigerant:..... **R-454B**
 Heat Control:..... **High Gas Heat**
 Duct Cfg:..... **Vertical Supply / Vertical Return**
 DX Options:**Two Stage Cooling, Single Circuit with**

Humidi-MiZer

Lines and Filters

Gas Line Size: **3/4**
 Condensate Drain Line Size: **3/4**
 Return Air Filter Type: **Throwaway**
 Return Air Filter Quantity: **4**
 Return Air Filter Size: **16 x 20 x 4**

Selection includes construction throwaway filter into the base fan curve.

Unit Configuration

High Gas Heat
 Two Stage Cooling, Single Circuit with Humidi-MiZer
 RA Smoke Detector
 High Static - EcoBlue Vane Axial
 Al/Cu - Al/Cu - Louvered Hail Guards
 SystemVu Controls
 ULL Enthalpy Economizer with Barometric Relief
 HP + NPCO + 4" MERV-13 Filters
 PMR + HACR
 Standard Packaging
 Humidi-MiZer™ Adaptive Dehumidification System

Warranty Information

1-Year parts(std.)
 5-Year compressor parts(std.)
 10-Year heat exchanger - Aluminized(std.)
 3-Year SystemVu Controller
COMPLETE UNIT YEAR 2-5 PARTS ONLY

Ordering Information

| Part Number | Description | Quantity |
|--------------------|--------------|----------|
| 48GEFN12B3M5-3WAP0 | Rooftop Unit | 1 |

Dimensions (ft. in.) & Weight (lb.) ***

Unit Length:..... **7' 4.125"**
 Unit Width:..... **4' 11.5"**
 Unit Height:..... **4' 1.375"**
Total Operating Weight:..... 1260 lb

*** Weights and Dimensions are approximate. Weight does not include unit packaging. Approximate dimensions are provided primarily for shipping purposes. For exact dimensions and weights, refer to appropriate product data catalog.

Certified Drawing for RTU-1

Project: Walgreens (PR) - #5058 Arnold, MO
 Prepared By:

06/04/2025
 09:36AM

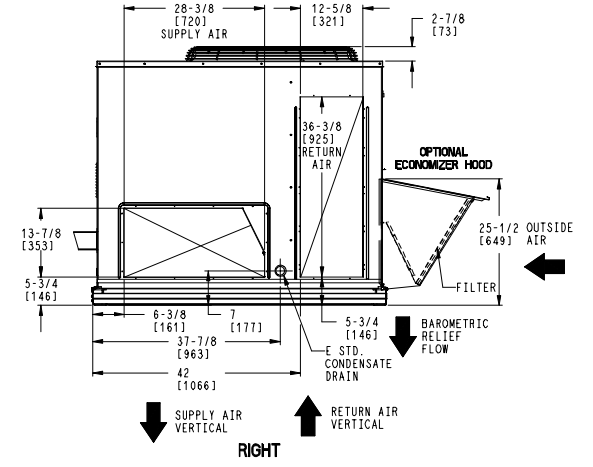
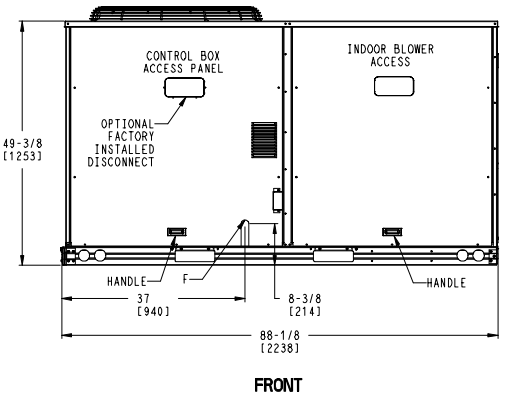
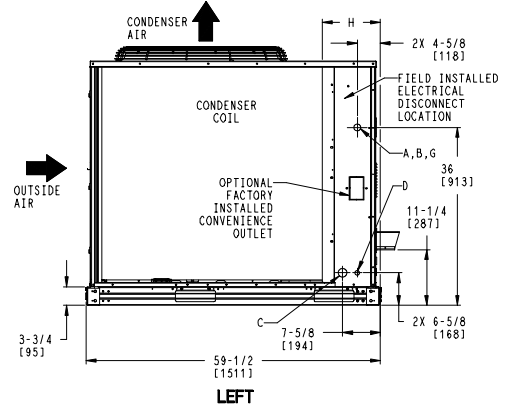
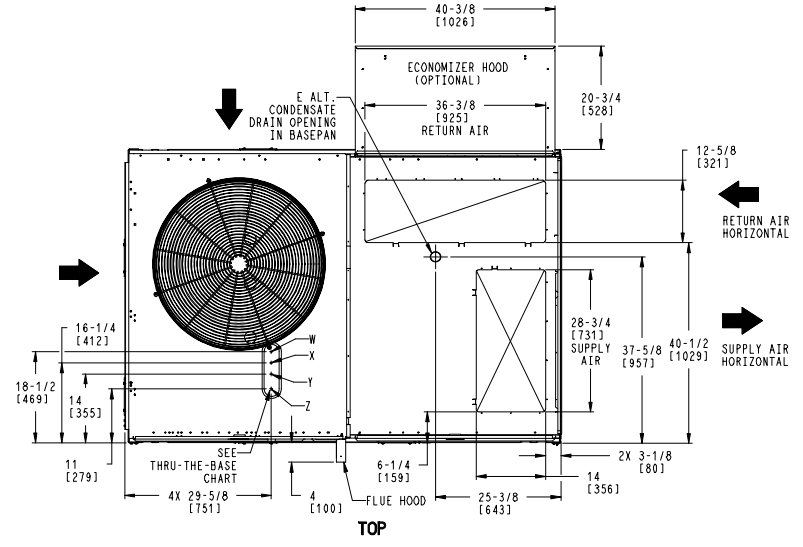
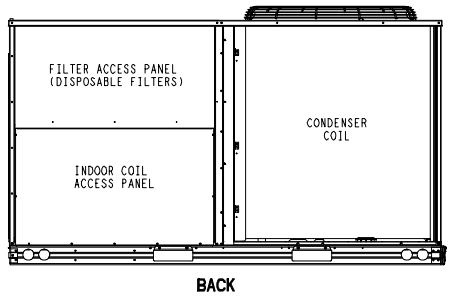
- NOTES:
1. DIMENSIONS ARE IN INCHES. DIMENSIONS IN [] ARE IN MILLIMETERS.
 2. CENTER OF GRAVITY
 3. DIRECTION OF AIR FLOW
 4. ALL VIEW DRAWN USING 3RD ANGLE

| UNIT | OUTDOOR COIL TYPE | H |
|--|-------------------|--------------|
| 48GE-M12 | RTPF | 15 7/8 [403] |
| RTPF - ROUND TUBE, PLATE FIN (COPPER/ALUM) | | |

THIS DOCUMENT IS THE PROPERTY OF CARRIER CORPORATION AND IS DELIVERED UPON THE EXPRESS CONDITION THAT THE CONTENTS WILL NOT BE DISCLOSED OR USED WITHOUT CARRIER CORPORATION'S WRITTEN CONSENT. SUBMISSION OF THESE DRAWINGS OR DOCUMENTS DOES NOT CONSTITUTE PART PERFORMANCE OR ACCEPTANCE OF CONTRACT.

| CONNECTION SIZES | |
|------------------|---|
| A | 1 3/8" [35] DIA FIELD POWER SUPPLY HOLE |
| B | 2 1/2" [64] DIA POWER SUPPLY KNOCKOUT |
| C | 1 3/4" [51] DIA GAUGE ACCESS PLUG |
| D | 7/8" [22] DIA FIELD CONTROL WIRING HOLE |
| E | 3/4"-14 NPT CONDENSATE DRAIN |
| F | 3/4"-14 NPT GAS CONNECTION |
| G | 2" [51] DIA POWER SUPPLY KNOCK-OUT |

| THRU-THE-BASE CHART THESE HOLES REQUIRED FOR USE CRBTMPWR002A01,004A01 | | | |
|---|-----------------------|----------|-------------------------|
| | THREADED CONDUIT SIZE | WIRE USE | REQ'D HOLE SIZES (MAX.) |
| W | 1/2" | ACC. | 7/8" [22.2] |
| X | 1/2" | 24V | 7/8" [22.2] |
| Y | 1 1/4" (002,004) | POWER | 1 3/4" [44.4] |
| Z* | (004) 3/4" FPT | GAS | 1 5/8" [41.3] |
| FOR "THRU-THE-BASEPAN" FACTORY OPTION, FITTINGS FOR ONLY X, Y, & Z ARE PROVIDED | | | |
| * (002) PROVIDES 3/4" FPT THRU CURB FLANGE & FITTING. | | | |



| ITC CLASSIFICATION | SHEET | DATE | SUPERCEDES | 48GE-12 SINGLE ZONE ELECTRICAL COOLING WITH GAS HEAT | 48TM009900 | REV |
|--------------------|--------|---------|------------|--|------------|-----|
| U.S. ECCN:NSR | 1 OF 3 | 5/21/24 | - | | | - |

Certified Drawing for RTU-1

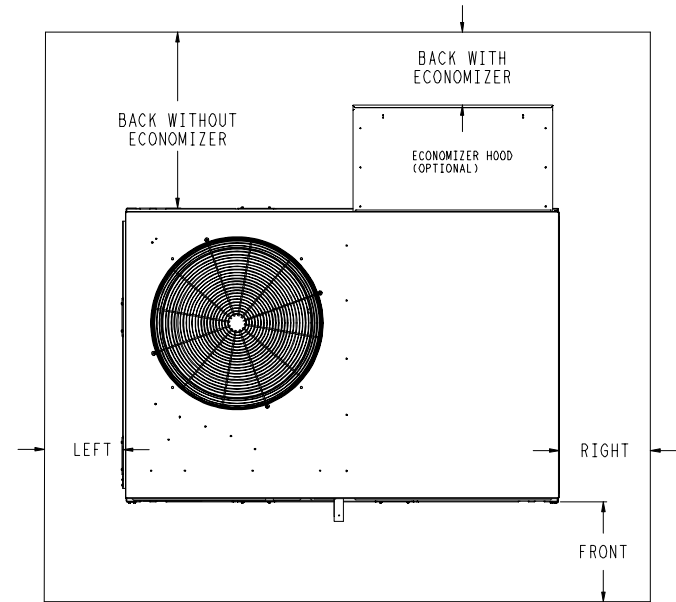
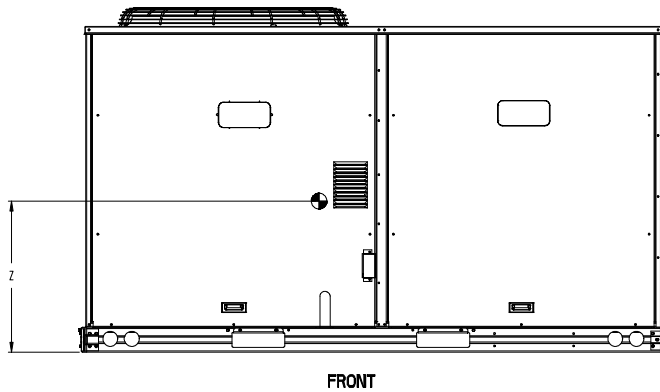
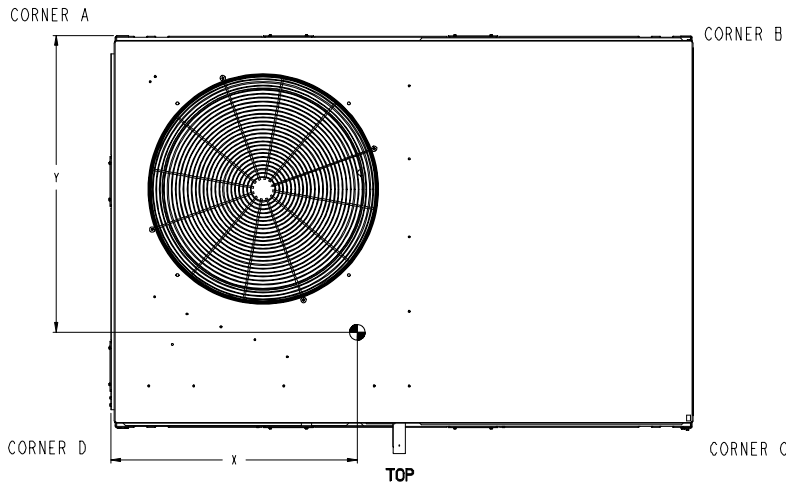
Project: Walgreens (PR) - #5058 Arnold, MO
 Prepared By:

06/04/2025
 09:36AM

| UNIT | OUTDOOR COIL TYPE | STD. UNIT WEIGHT*** | | CORNER WEIGHT (A) | | CORNER WEIGHT (B) | | CORNER WEIGHT (C) | | CORNER WEIGHT (D) | | C.G. | | | | | |
|----------|-------------------|---------------------|-----|-------------------|-----|-------------------|-----|-------------------|-----|-------------------|-----|--------|--------|----|-------|--------|-------|
| | | LBS. | KG. | LBS. | KG. | LBS. | KG. | LBS. | KG. | LBS. | KG. | X | Y | Z | | | |
| 48GE-M12 | RTPF | 1037 | 470 | 240 | 109 | 204 | 93 | 272 | 124 | 320 | 145 | 40 1/2 | [1029] | 34 | [864] | 20 1/2 | [521] |

*** STANDARD UNIT WEIGHT IS WITH LOW GAS HEAT AND WITHOUT PACKAGING.
 FOR OTHER OPTIONS AND ACCESSORIES, REFER TO THE PRODUCT DATA CATALOG.

Carrier THIS DOCUMENT IS THE PROPERTY OF CARRIER CORPORATION AND IS DELIVERED UPON THE EXPRESS CONDITION THAT THE CONTENTS WILL NOT BE DISCLOSED OR USED WITHOUT CARRIER CORPORATION'S WRITTEN CONSENT. SUBMISSION OF THESE DRAWINGS OR DOCUMENTS DOES NOT CONSTITUTE PART PERFORMANCE OR ACCEPTANCE OF CONTRACT.



NOTE:
 1. FOR ALL MINIMUM CLEARANCES LOCAL CODES OR JURISDICTIONS MAY PREVAIL.

| SURFACE | SERVICE WITH: | | OPERATING CLEARANCE |
|---------------|--------------------|-----------------------|---------------------|
| | CONDUCTIVE BARRIER | NONCONDUCTIVE BARRIER | |
| FRONT | 48 [1219mm] | 36 [914mm] | 18 [457mm] |
| LEFT | 48 [1219mm] | 42 [1067mm] | 18 [457mm] |
| BACK W/O ECON | 48 [1219mm] | 42 [1067mm] | 18 [457mm] |
| BACK W/ECON | 36 [914mm] | 36 [914mm] | 18 [457mm] |
| RIGHT | 36 [914mm] | 36 [914mm] | 18 [457mm] |
| TOP | 72 [1829mm] | 72 [1829mm] | 72 [1829mm] |

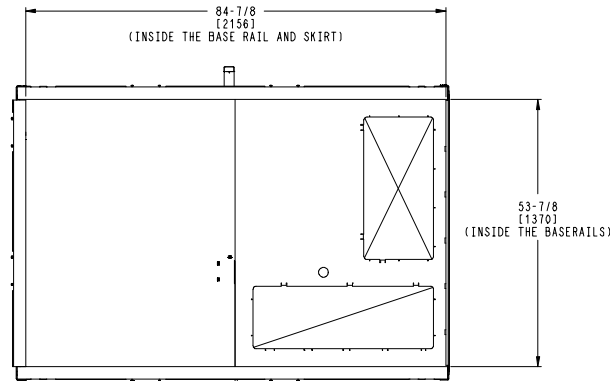
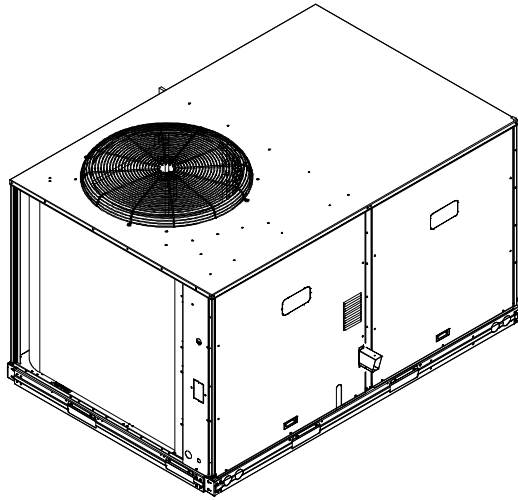
| | | | | | | |
|--------------------|--------|---------|------------|--|------------|-----|
| ITC CLASSIFICATION | SHEET | DATE | SUPERCEDES | 48GE-12 SINGLE ZONE ELECTRICAL COOLING WITH GAS HEAT | 48TM009900 | REV |
| U.S. ECCN:NSR | 2 OF 3 | 5/21/24 | - | | | - |

Certified Drawing for RTU-1

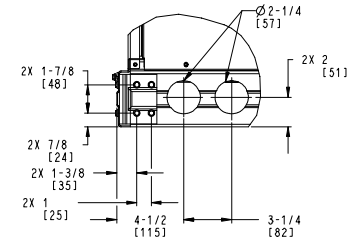
Project: Walgreens (PR) - #5058 Arnold, MO
 Prepared By:

06/04/2025
 09:36AM

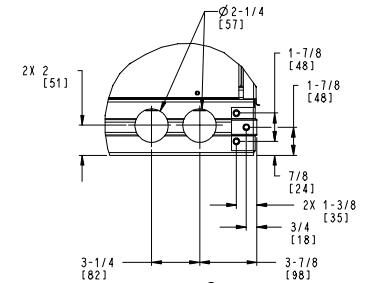
Carrier THIS DOCUMENT IS THE PROPERTY OF CARRIER CORPORATION AND IS DELIVERED UPON THE EXPRESS CONDITION THAT THE CONTENTS WILL NOT BE DISCLOSED OR USED WITHOUT CARRIER CORPORATION'S WRITTEN CONSENT. SUBMISSION OF THESE DRAWINGS OR DOCUMENTS DOES NOT CONSTITUTE PART PERFORMANCE OR ACCEPTANCE OF CONTRACT.



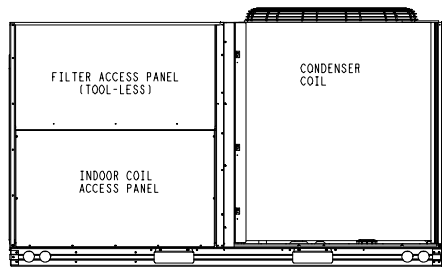
INSIDE BASERAIL DIMENSIONS
BOTTOM



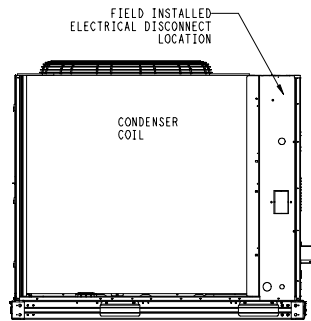
DETAIL B
 AT 2 PLCS



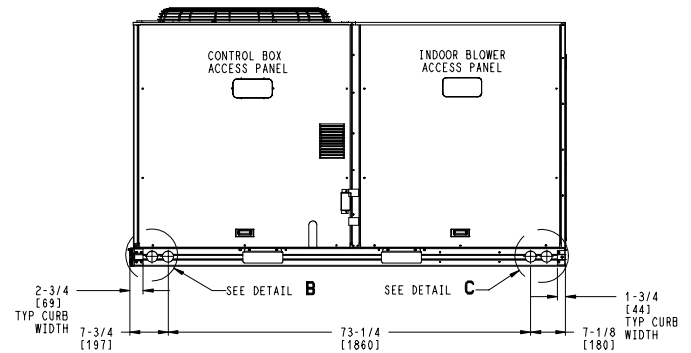
DETAIL C
 AT 2 PLCS



BACK



LEFT



FRONT

| | | | | | | |
|--------------------|--------|---------|------------|--|------------|-----|
| ITC CLASSIFICATION | SHEET | DATE | SUPERCEDES | 48GE-12 SINGLE ZONE ELECTRICAL COOLING WITH GAS HEAT | 48TM009900 | REV |
| U.S. ECCN:NSR | 3 OF 3 | 5/21/24 | - | | | - |

Performance Summary For RTU-1

Project: Walgreens (PR) - #5058 Arnold, MO
Prepared By:

06/04/2025
09:36AM

Part Number:48GEFN12B3M5-3WAP0

Refrigerant:..... **R-454B**
ARI EER:..... **12.10**
IEER (Max Cooling at Normal Cooling Design Mode):..... **17.5**

Base Unit Dimensions

Unit Length:..... **88.1** in
Unit Width:..... **59.5** in
Unit Height:..... **49.4** in

Operating Weight

Base Unit Weight:..... **1037** lb
High Gas Heat:..... **86** lb
Two Stage Cooling, Single Circuit with Humidi-MiZer:..... **34** lb
RA Smoke Detector:..... **7** lb
High Static - EcoBlue Vane Axial:..... **30** lb
SystemVu Controls:..... **2** lb
ULL Enthalpy Economizer with Barometric Relief:..... **55** lb
HP + NPCO + 4" MERV-13 Filters:..... **9** lb

Total Operating Weight:..... **1260** lb

Unit

Unit Voltage-Phase-Hertz:..... **208-3-60**
Air Discharge:..... **Vertical**
Fan Drive Type:..... **Vane Axial**
Actual Airflow:..... **3250** CFM
Site Altitude:..... **564** ft

Cooling Performance

Condenser Entering Air DB:..... **95.0** F
Evaporator Entering Air DB:..... **75.2** F
Evaporator Entering Air WB:..... **63.4** F
Evaporator Entering Air Enthalpy:..... **28.99** BTU/lb
Evaporator Leaving Air DB:..... **54.0** F
Evaporator Leaving Air WB:..... **52.0** F
Evaporator Leaving Air Enthalpy:..... **21.54** BTU/lb
Gross Cooling Capacity:..... **106.76** MBH
Gross Sensible Capacity:..... **72.98** MBH
Compressor Power Input:..... **8.23** kW
Coil Bypass Factor:..... **0.068**

Mixed Air

Outdoor Air Airflow:..... **450** CFM
Outdoor Air DB:..... **95.0** F
Outdoor Air WB:..... **76.0** F
Outdoor Air Htg. Temp.:..... **2.0** F
Return Air DB:..... **72.0** F
Return Air WB:..... **61.0** F
Return Air Htg. Temp.:..... **70.0** F

Heating Performance

Heating Airflow:..... **3250** CFM
Entering Air Temp:..... **60.6** F
Leaving Air Temp:..... **120.2** F
Gas Heating Input Capacity:..... **200.0 / 250.0** MBH
Gas Heating Output Capacity:..... **164.0 / 205.0** MBH
Temperature Rise:..... **59.6** F
Thermal Efficiency (%):..... **82.0**

Performance Summary For RTU-1

Project: Walgreens (PR) - #5058 Arnold, MO
 Prepared By:

06/04/2025
 09:36AM

Supply Fan

| | | |
|--|--|-------|
| External Static Pressure:..... | 1.00 | in wg |
| Options / Accessories Static Pressure | | |
| Humidi-MiZer Dehumidification System:..... | 0.14 | in wg |
| Economizer:..... | 0.13 | in wg |
| MERV-13 Filter Kit:..... | 0.17 | in wg |
| Application External Static (ESP + Unit Opts/Acc.):..... | 1.44 | in wg |
| Fan RPM:..... | 1702 | |
| Fan Power:..... | 2.55 | BHP |
| NOTE:..... | Selected IFM RPM Range: 1266 - 2200 | |

Selection includes construction throwaway filter into the base fan curve. This filter is not MERV Rated.

Filter pressure drop assumes a clean filter and is intended to be an estimate based on available supplier data. The actual pressure drop the unit experiences may vary due to alternate suppliers or filter loading over time.

Electrical Data

| | |
|-------------------------------------|-----------|
| Voltage Range: | 187 - 253 |
| Compressor #1 RLA:..... | 21.1 |
| Compressor #1 LRA:..... | 157 |
| Compressor #2 RLA:..... | 12.8 |
| Compressor #2 LRA:..... | 120 |
| Indoor Fan Motor Type:..... | HIGH |
| Indoor Fan Motor FLA (Total):..... | 12.6 |
| Combustion Fan Motor FLA (ea):..... | 0.48 |
| Power Supply MCA:..... | 60 |
| Disconnect Size FLA:..... | 62 |
| Disconnect Size LRA: | 302 |
| Electrical Convenience Outlet:..... | None |
| Outdoor Fan [Qty / FLA (ea)]: | 1 / 7.4 |
| Power Supply HACR:..... | 80 |

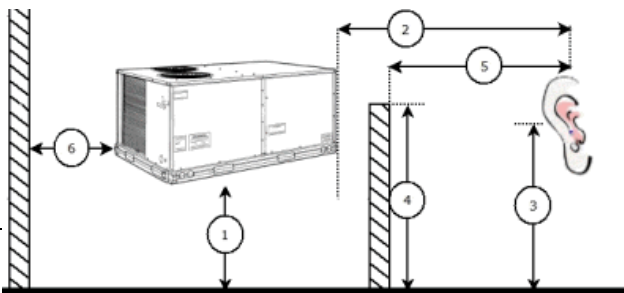
Control Panel SCCR: 5kA RMS at Rated Symmetrical Voltage

Acoustics

Sound Power Levels, db re 10E-12 Watts

| | Discharge | Inlet | Outdoor |
|------------|-----------|-------|---------|
| 63 Hz | 95.0 | 87.2 | 85.9 |
| 125 Hz | 88.7 | 84.1 | 87.9 |
| 250 Hz | 82.6 | 76.5 | 85.6 |
| 500 Hz | 80.0 | 72.6 | 84.4 |
| 1000 Hz | 81.1 | 71.3 | 82.8 |
| 2000 Hz | 78.0 | 66.6 | 78.5 |
| 4000 Hz | 72.7 | 57.0 | 74.9 |
| 8000 Hz | 64.6 | 49.7 | 72.5 |
| A-Weighted | 85.3 | 76.3 | 87.0 |

Advanced Acoustics



Performance Summary For RTU-1

Project: Walgreens (PR) - #5058 Arnold, MO
Prepared By:

06/04/2025
09:36AM

Advanced Acoustics Parameters

1. Unit height above ground:**30.0** ft
2. Horizontal distance from unit to receiver:**50.0** ft
3. Receiver height above ground:**5.7** ft
4. Height of obstruction:**0.0** ft
5. Horizontal distance from obstruction to receiver: .**0.0** ft
6. Horizontal distance from unit to obstruction:**0.0** ft

Detailed Acoustics Information

| Octave Band Center Freq. Hz | 63 | 125 | 250 | 500 | 1k | 2k | 4k | 8k | Overall |
|-----------------------------|------|------|------|------|------|------|------|------|----------|
| A | 85.9 | 87.9 | 85.6 | 84.4 | 82.8 | 78.5 | 74.9 | 72.5 | 92.9 Lw |
| B | 59.7 | 71.8 | 77.0 | 81.2 | 82.8 | 79.7 | 75.9 | 71.4 | 87.3 LwA |
| C | 53.5 | 55.5 | 53.2 | 52.0 | 50.4 | 46.1 | 42.5 | 40.1 | 60.5 Lp |
| D | 27.3 | 39.4 | 44.6 | 48.8 | 50.4 | 47.3 | 43.5 | 39.0 | 54.9 LpA |

Legend

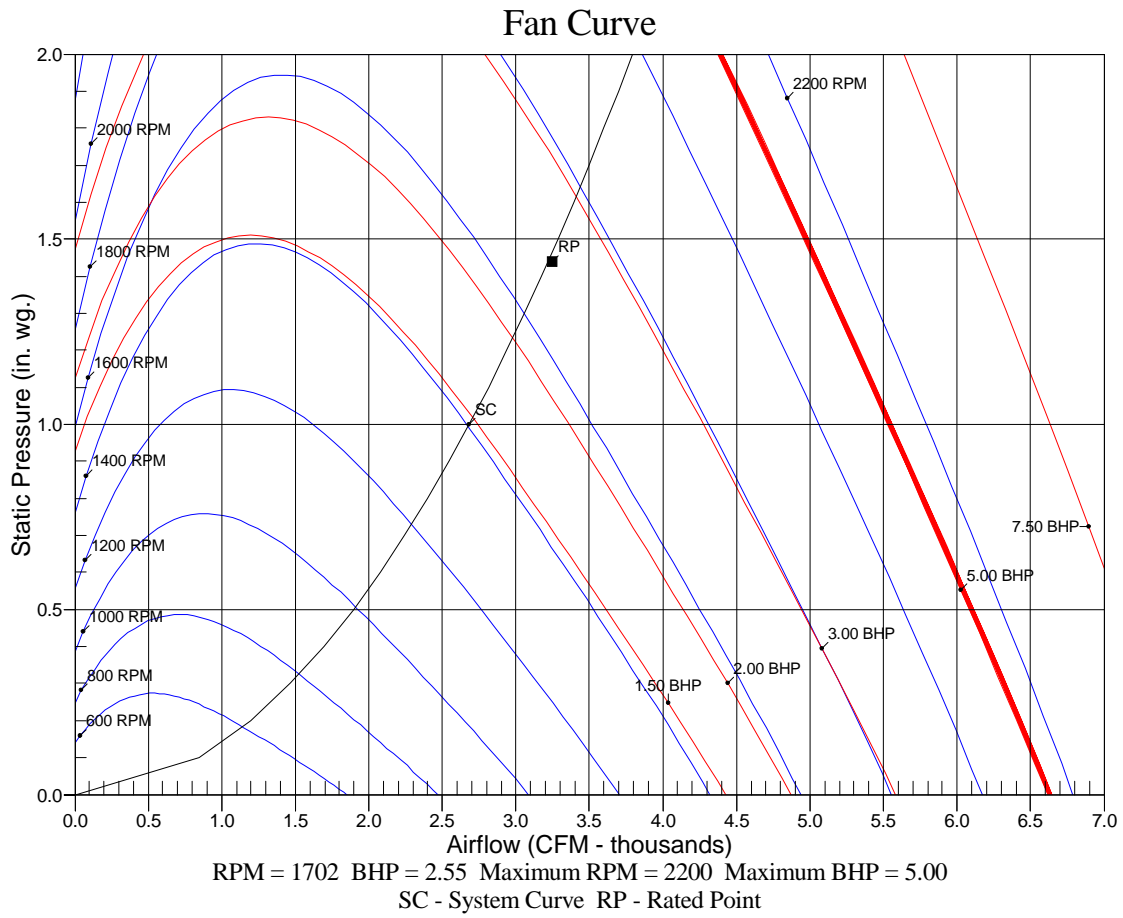
- A Sound Power Levels at Unit's Acoustic Center, Lw
- B A-Weighted Sound Power Levels at Unit's Acoustic Center, LwA
- C Sound Pressure Levels at Specific Distance from Unit, Lp
- D A-Weighted Sound Pressure Levels at Specific Distance from Unit, LpA

Calculation methods used in this program are patterned after the ASHRAE Guide; other ASHRAE Publications and the AHRI Acoustical Standards. While a very significant effort has been made to insure the technical accuracy of this program, it is assumed that the user is knowledgeable in the art of system sound estimation and is aware of the tolerances involved in real world acoustical estimation. This program makes certain assumptions as to the dominant sound sources and sound paths which may not always be appropriate to the real system being estimated. Because of this, no assurances can be offered that this software will always generate an accurate sound prediction from user supplied input data. If in doubt about the estimation of expected sound levels in a space, an Acoustical Engineer or a person with sound prediction expertise should be consulted.

Performance Summary For RTU-1

Project: Walgreens (PR) - #5058 Arnold, MO
Prepared By:

06/04/2025
09:36AM



RTU-2

**Tag Cover Sheet
Unit Report
Certified Drawing
Performance Report**

Unit Report For RTU-2

Project: Walgreens (PR) - #5058 Arnold, MO
 Prepared By:

06/04/2025
 09:36AM

Unit Parameters

Unit Model:.....**48GEFN08B3M5-3MAP0**
 Unit Size:.....**08 (7.5 Tons)**
 Volts-Phase-Hertz:.....**208-3-60**
 Heating Type:.....**Gas**
 Refrigerant:.....**R-454B**
 Heat Control:.....**High Gas Heat**
 Duct Cfg:.....**Vertical Supply / Vertical Return**
 DX Options:**Two Stage Cooling, Single Circuit with**

Humidi-MiZer

Lines and Filters

Gas Line Size: **3/4**
 Condensate Drain Line Size: **3/4**
 Return Air Filter Type: **Throwaway**
 Return Air Filter Quantity: **4**
 Return Air Filter Size: **16 x 20 x 4**

Selection includes construction throwaway filter into the base fan curve.

Unit Configuration

High Gas Heat
 Two Stage Cooling, Single Circuit with Humidi-MiZer
 RA Smoke Detector
 High Static - EcoBlue Vane Axial
 Al/Cu - Al/Cu - Louvered Hail Guards
 SystemVu Controls
 ULL Enthalpy Economizer with Barometric Relief and CO2 Sensor
 HP + NPCO + 4" MERV-13 Filters
 PMR + HACR
 Standard Packaging
 Humidi-MiZer™ Adaptive Dehumidification System

Warranty Information

1-Year parts(std.)
 5-Year compressor parts(std.)
 10-Year heat exchanger - Aluminized(std.)
 3-Year SystemVu Controller
COMPLETE UNIT YEAR 2-5 PARTS ONLY

Ordering Information

| Part Number | Description | Quantity |
|--------------------|--------------|----------|
| 48GEFN08B3M5-3MAP0 | Rooftop Unit | 1 |

Dimensions (ft. in.) & Weight (lb.) ***

Unit Length:.....**7' 4.125"**
 Unit Width:.....**4' 11.5"**
 Unit Height:.....**4' 1.375"**
Total Operating Weight:..... 1056 lb

*** Weights and Dimensions are approximate. Weight does not include unit packaging. Approximate dimensions are provided primarily for shipping purposes. For exact dimensions and weights, refer to appropriate product data catalog.

Certified Drawing for RTU-2

Project: Walgreens (PR) - #5058 Arnold, MO
 Prepared By:

06/04/2025
 09:36AM

- NOTES:
1. DIMENSIONS ARE IN INCHES. DIMENSIONS IN [] ARE IN MILLIMETERS.
 2. CENTER OF GRAVITY
 3. DIRECTION OF AIR FLOW
 4. ALL VIEW DRAWN USING 3RD ANGLE

| UNIT | OUTDOOR COIL TYPE | J | K | H |
|----------|-------------------|---------------|--------------|--------------|
| 48GE-M07 | RTPF | 41 3/4 [1048] | 33 3/4 [857] | 15 7/8 [403] |
| 48GE-M08 | RTPF | 49 3/8 [1253] | 36 3/8 [925] | 15 7/8 [403] |
| 48GE-M09 | RTPF | 49 3/8 [1253] | 36 3/8 [925] | 15 7/8 [403] |

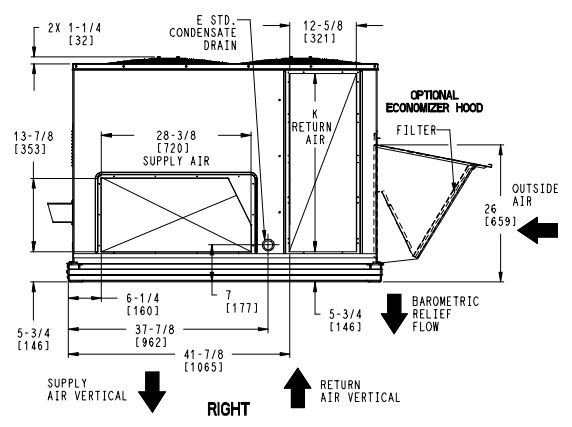
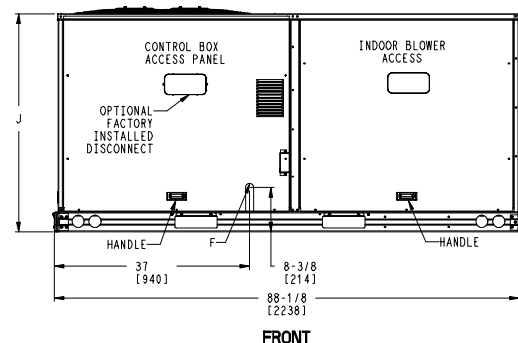
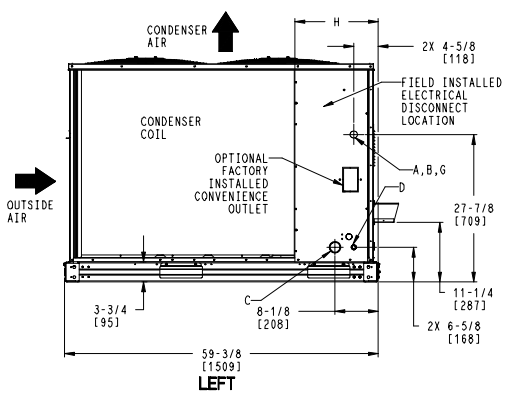
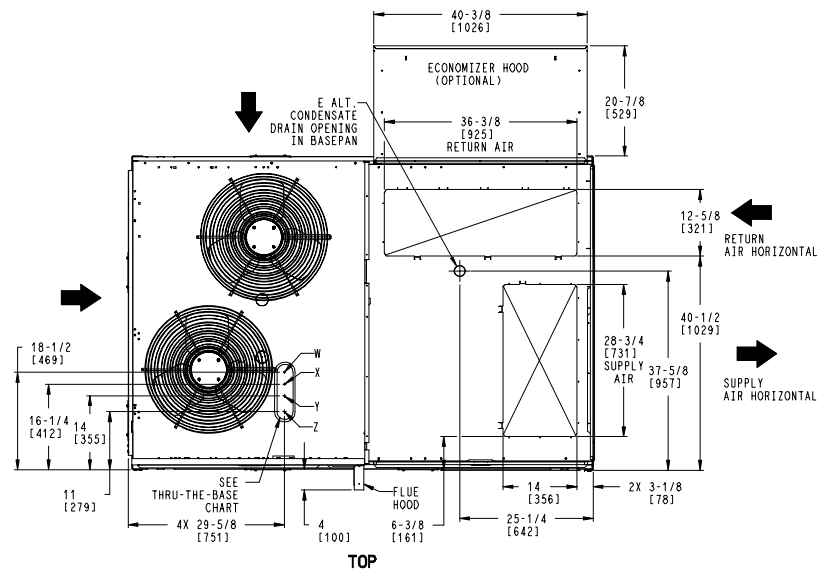
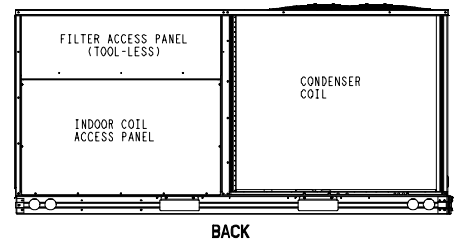
RTPF - ROUND TUBE, PLATE FIN (COPPER/ALUM)

THIS DOCUMENT IS THE PROPERTY OF CARRIER CORPORATION AND IS DELIVERED UPON THE EXPRESS CONDITION THAT THE CONTENTS WILL NOT BE DISCLOSED OR USED WITHOUT CARRIER CORPORATION'S WRITTEN CONSENT. SUBMISSION OF THESE DRAWINGS OR DOCUMENTS DOES NOT CONSTITUTE PART PERFORMANCE OR ACCEPTANCE OF CONTRACT.

| CONNECTION SIZES | |
|------------------|---|
| A | 1 3/8" [35] DIA FIELD POWER SUPPLY HOLE |
| B | 2 1/2" [64] DIA POWER SUPPLY KNOCKOUT |
| C | 1 3/4" [51] DIA GAUGE ACCESS PLUG |
| D | 7/8" [22] DIA FIELD CONTROL WIRING HOLE |
| E | 3/4"-14 NPT CONDENSATE DRAIN |
| F | 1/2"-14 NPT GAS CONNECTION |
| G | 3/4"-14 NPT GAS CONNECTION |
| | 2" [51] DIA POWER SUPPLY KNOCK-OUT |

| THRU-THE-BASE CHART (FIELD INST) | | | |
|---|-----------------------|----------|-------------------------|
| THESE HOLES REQUIRED FOR USE WITH ACCY KITS: CRBTMPR002A01: GAS THRU CURB CRBTMPR004A01: GAS THRU BASEPAN | | | |
| | THREADED CONDUIT SIZE | WIRE USE | REQ'D HOLE SIZES (MAX.) |
| W | 1/2" | ACC. | 7/8" [22.2] |
| X | 1/2" | 24V | 7/8" [22.2] |
| Y | 1 1/4" [002,004] | POWER | 1 3/4" [44.4] |
| Z * | (004) 3/4" FPT | GAS | 1 3/4" [44.4] |
| * (002) PROVIDES 3/4" FPT THRU CURB FLANGE & FITTING. HOLE SIZE: 2" [50.8] | | | |

| THRU-THE-BASE CHART (FIOP) | |
|---|--|
| FOR "THRU-THE-BASEPAN" FACTORY OPTION, FITTINGS FOR ONLY X, Y, & Z ARE PROVIDED. ** | |
| ** FOR BELOW LISTED MODELS, A FIELD SUPPLIED 1/2" ADAPTER IS REQUIRED BETWEEN BASE PAN FITTING AND GAS VALVE: 48GED,S=07,08 | |



| | | | | | | |
|--------------------|--------|---------|------------|---|------------|-----|
| ITC CLASSIFICATION | SHEET | DATE | SUPERCEDES | 48GE 07-09 SINGLE ZONE ELECTRICAL COOLING WITH GAS HEAT | 48TM009899 | REV |
| U.S. ECCN:NSR | 1 OF 3 | 5/20/24 | - | | | - |

Certified Drawing for RTU-2

Project: Walgreens (PR) - #5058 Arnold, MO
 Prepared By:

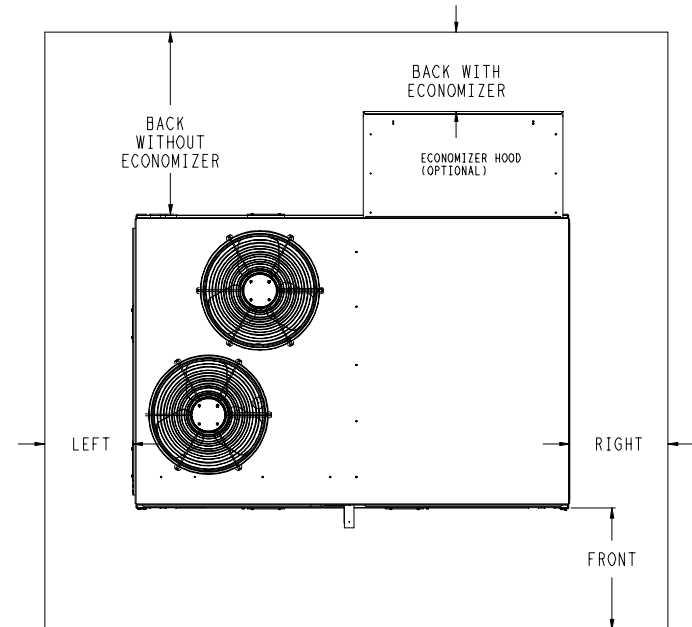
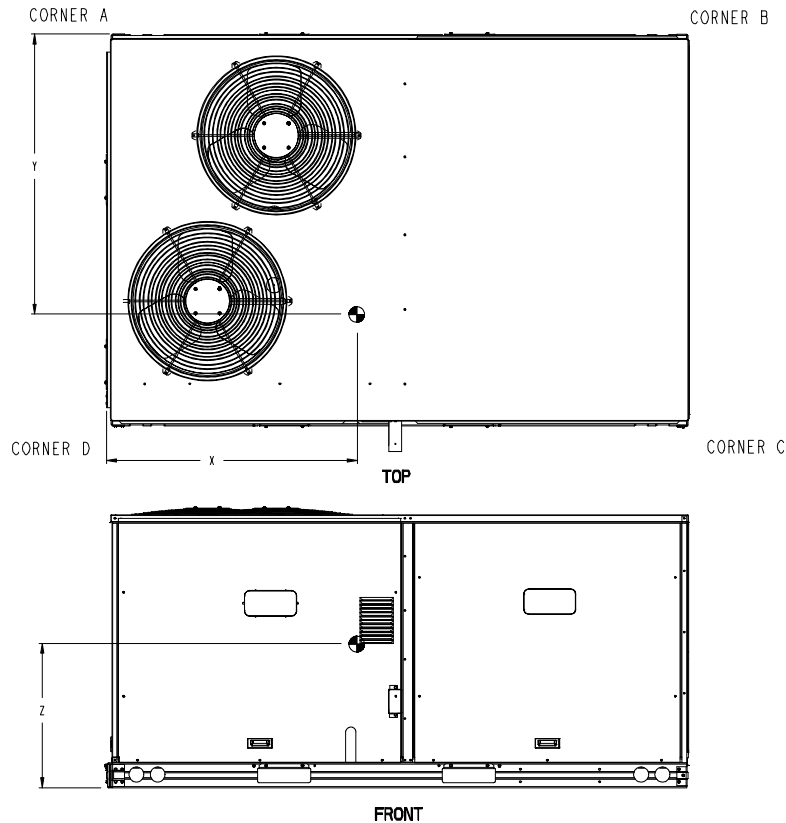
06/04/2025
 09:36AM

| UNIT | OUTDOOR COIL TYPE | STD. UNIT WEIGHT *** | | CORNER WEIGHT (A) | | CORNER WEIGHT (B) | | CORNER WEIGHT (C) | | CORNER WEIGHT (D) | | C.G. | | |
|----------|-------------------|----------------------|-----|-------------------|-----|-------------------|-----|-------------------|-----|-------------------|-----|--------|--------|--------|
| | | LBS. | KG. | LBS. | KG. | LBS. | KG. | LBS. | KG. | LBS. | KG. | X | Y | Z |
| 48GE-M07 | RTPF | 775 | 352 | 187 | 85 | 159 | 72 | 198 | 90 | 232 | 105 | 40 1/2 | 33 | 19 7/8 |
| 48GE-M08 | RTPF | 893 | 405 | 203 | 92 | 169 | 76 | 237 | 107 | 285 | 129 | 40 | 34 3/4 | 18 5/8 |
| 48GE-M09 | RTPF | 893 | 405 | 203 | 92 | 169 | 76 | 237 | 107 | 285 | 129 | 40 | 34 3/4 | 18 5/8 |

RTPF - ROUND TUBE, PLATE FIN (COPPER/ALUM)

Carrier THIS DOCUMENT IS THE PROPERTY OF CARRIER CORPORATION AND IS DELIVERED UPON THE EXPRESS CONDITION THAT THE CONTENTS WILL NOT BE DISCLOSED OR USED WITHOUT CARRIER CORPORATION'S WRITTEN CONSENT. SUBMISSION OF THESE DRAWINGS OR DOCUMENTS DOES NOT CONSTITUTE PART PERFORMANCE OR ACCEPTANCE OF CONTRACT.

*** STANDARD UNIT WEIGHT IS WITH LOW GAS HEAT AND WITHOUT PACKAGING. FOR OTHER OPTIONS AND ACCESSORIES, REFER TO THE PRODUCT DATA CATALOG.



NOTE:
 1. FOR ALL MINIMUM CLEARANCES LOCAL CODES OR JURISDICTIONS MAY PREVAIL.

| SURFACE | CLEARANCE | | |
|---------------|---------------------------------|------------------------------------|---------------------|
| | SERVICE WITH CONDUCTIVE BARRIER | SERVICE WITH NONCONDUCTIVE BARRIER | OPERATING CLEARANCE |
| FRONT | 48 [1219mm] | 36 [914mm] | 18 [457mm] |
| LEFT | 48 [1219mm] | 42 [1067mm] | 18 [457mm] |
| BACK W/O ECON | 48 [1219mm] | 42 [1067mm] | 18 [457mm] |
| BACK W/ECON | 36 [914mm] | 36 [914mm] | 18 [457mm] |
| RIGHT | 36 [914mm] | 36 [914mm] | 18 [457mm] |
| TOP | 72 [1829mm] | 72 [1829mm] | 72 [1829mm] |

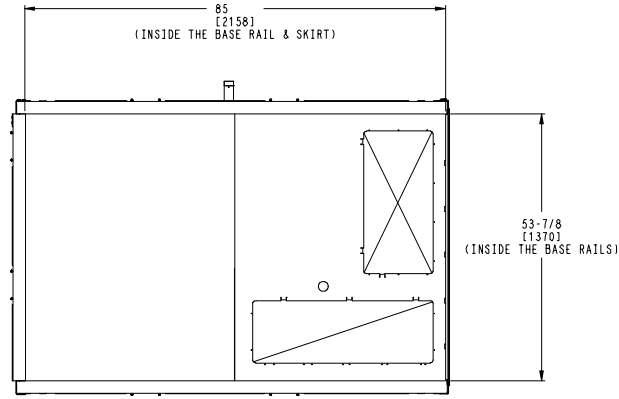
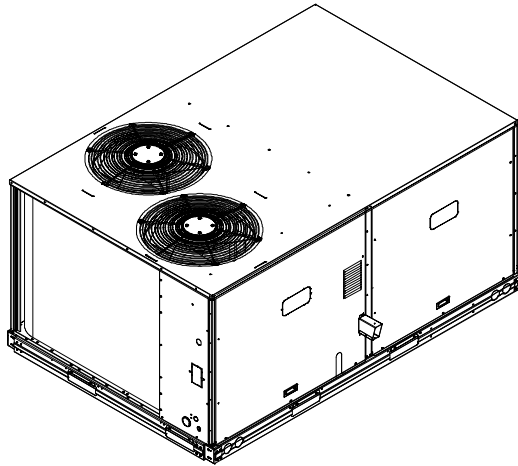
| | | | | | | |
|-------------------------------------|-----------------|-----------------|-----------------|---|------------|----------|
| ITC CLASSIFICATION U.S. ECCN:NSR | SHEET 2 OF 3 | DATE 5/20/24 | SUPERCEDES - | 48GE 07-09 SINGLE ZONE ELECTRICAL COOLING WITH GAS HEAT | 48TM009899 | REV - |
|-------------------------------------|-----------------|-----------------|-----------------|---|------------|----------|

Certified Drawing for RTU-2

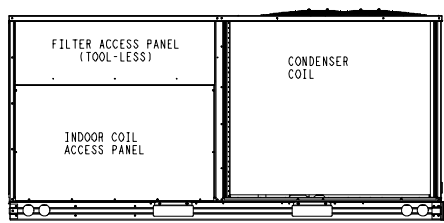
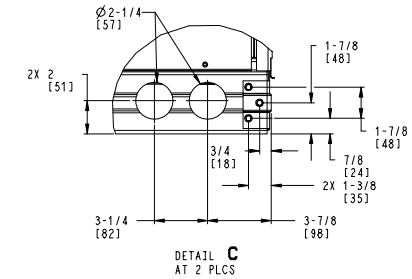
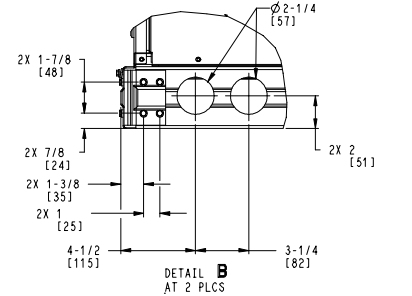
Project: Walgreens (PR) - #5058 Arnold, MO
 Prepared By:

06/04/2025
 09:36AM

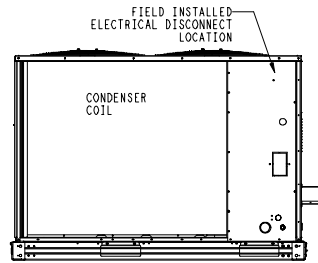
Carrier THIS DOCUMENT IS THE PROPERTY OF CARRIER CORPORATION AND IS DELIVERED UPON THE EXPRESS CONDITION THAT THE CONTENTS WILL NOT BE DISCLOSED OR USED WITHOUT CARRIER CORPORATION'S WRITTEN CONSENT. SUBMISSION OF THESE DRAWINGS OR DOCUMENTS DOES NOT CONSTITUTE PART PERFORMANCE OR ACCEPTANCE OF CONTRACT.



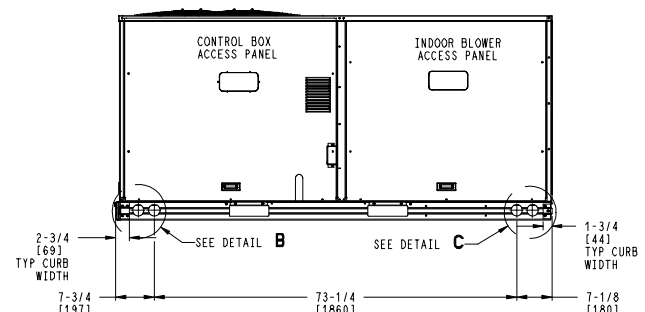
INSIDE BASERAIL DIMENSIONS
BOTTOM



BACK



LEFT



FRONT

| | | | | | | |
|--------------------|--------|---------|------------|---|------------|-----|
| ITC CLASSIFICATION | SHEET | DATE | SUPERCEDES | 48GE 07-09 SINGLE ZONE ELECTRICAL COOLING WITH GAS HEAT | 48TM009899 | REV |
| U.S. ECCN: NSR | 3 OF 3 | 5/20/24 | - | | | - |

Performance Summary For RTU-2

Project: Walgreens (PR) - #5058 Arnold, MO
Prepared By:

06/04/2025
09:36AM

Part Number:48GEFN08B3M5-3MAP0

Refrigerant:..... **R-454B**
ARI EER:..... **12.20**
IEER (Max Cooling at Normal Cooling Design Mode):..... **17.5**

Base Unit Dimensions

Unit Length:..... **88.1** in
Unit Width:..... **59.5** in
Unit Height:..... **49.4** in

Operating Weight

Base Unit Weight:..... **893** lb
High Gas Heat:..... **81** lb
Two Stage Cooling, Single Circuit with Humidi-MiZer:..... **34** lb
RA Smoke Detector:..... **7** lb
High Static - EcoBlue Vane Axial:..... **30** lb
SystemVu Controls:..... **2** lb
HP + NPCO + 4" MERV-13 Filters:..... **9** lb

Total Operating Weight:..... **1056** lb

Unit

Unit Voltage-Phase-Hertz:..... **208-3-60**
Air Discharge:..... **Vertical**
Fan Drive Type:..... **Vane Axial**
Actual Airflow:..... **2450** CFM
Site Altitude:..... **564** ft

Cooling Performance

Condenser Entering Air DB:..... **95.0** F
Evaporator Entering Air DB:..... **74.8** F
Evaporator Entering Air WB:..... **64.0** F
Evaporator Entering Air Enthalpy:..... **29.42** BTU/lb
Evaporator Leaving Air DB:..... **53.1** F
Evaporator Leaving Air WB:..... **51.9** F
Evaporator Leaving Air Enthalpy:..... **21.51** BTU/lb
Gross Cooling Capacity:..... **85.55** MBH
Gross Sensible Capacity:..... **56.22** MBH
Compressor Power Input:..... **6.24** kW
Coil Bypass Factor:..... **0.078**

Mixed Air

Outdoor Air Airflow:..... **300** CFM
Outdoor Air DB:..... **95.0** F
Outdoor Air WB:..... **76.0** F
Outdoor Air Htg. Temp.:..... **2.0** F
Return Air DB:..... **72.0** F
Return Air WB:..... **62.0** F
Return Air Htg. Temp.:..... **70.0** F

Heating Performance

Heating Airflow:..... **2450** CFM
Entering Air Temp:..... **61.7** F
Leaving Air Temp:..... **131.5** F
Gas Heating Input Capacity:..... **180.0 / 224.0** MBH
Gas Heating Output Capacity:..... **146.0 / 181.0** MBH
Temperature Rise:..... **69.8** F
Thermal Efficiency (%):..... **81.0**

Supply Fan

Performance Summary For RTU-2

Project: Walgreens (PR) - #5058 Arnold, MO
 Prepared By:

06/04/2025
 09:36AM

| | | |
|--|--|-------|
| External Static Pressure:..... | 1.00 | in wg |
| Options / Accessories Static Pressure | | |
| Humidi-MiZer Dehumidification System:..... | 0.14 | in wg |
| Economizer:..... | 0.07 | in wg |
| MERV-13 Filter Kit: | 0.12 | in wg |
| Application External Static (ESP + Unit Opts/Acc.):..... | 1.32 | in wg |
| Fan RPM:..... | 1594 | |
| Fan Power:..... | 1.47 | BHP |
| NOTE: | Selected IFM RPM Range: 1001 - 2200 | |

Selection includes construction throwaway filter into the base fan curve. This filter is not MERV Rated.

Filter pressure drop assumes a clean filter and is intended to be an estimate based on available supplier data. The actual pressure drop the unit experiences may vary due to alternate suppliers or filter loading over time.

Electrical Data

| | |
|-------------------------------------|-----------|
| Voltage Range: | 187 - 253 |
| Compressor #1 RLA:..... | 16 |
| Compressor #1 LRA:..... | 156 |
| Compressor #2 RLA:..... | 12.8 |
| Compressor #2 LRA:..... | 98 |
| Indoor Fan Motor Type:..... | HIGH |
| Indoor Fan Motor FLA (Total):..... | 7.5 |
| Combustion Fan Motor FLA (ea):..... | 0.48 |
| Power Supply MCA:..... | 44 |
| Disconnect Size FLA:..... | 45 |
| Disconnect Size LRA: | 273 |
| Electrical Convenience Outlet:..... | None |
| Outdoor Fan [Qty / FLA (ea)]: | 2 / 1.5 |
| Power Supply HACR:..... | 50 |

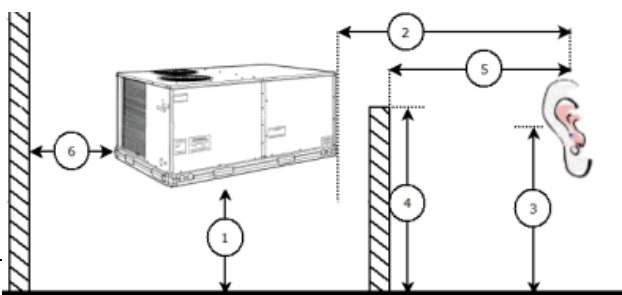
Control Panel SCCR: 5kA RMS at Rated Symmetrical Voltage

Acoustics

Sound Power Levels, db re 10E-12 Watts

| | Discharge | Inlet | Outdoor |
|------------|-----------|-------|---------|
| 63 Hz | 89.7 | 84.6 | 90.6 |
| 125 Hz | 85.9 | 80.2 | 84.3 |
| 250 Hz | 77.8 | 72.8 | 80.2 |
| 500 Hz | 74.8 | 67.5 | 79.3 |
| 1000 Hz | 75.8 | 67.4 | 77.1 |
| 2000 Hz | 72.2 | 61.6 | 72.2 |
| 4000 Hz | 67.7 | 54.2 | 67.4 |
| 8000 Hz | 58.8 | 48.3 | 63.7 |
| A-Weighted | 80.1 | 72.1 | 82.0 |

Advanced Acoustics



Performance Summary For RTU-2

Project: Walgreens (PR) - #5058 Arnold, MO
 Prepared By:

06/04/2025
 09:36AM

Advanced Acoustics Parameters

1. Unit height above ground:**30.0** ft
2. Horizontal distance from unit to receiver:**50.0** ft
3. Receiver height above ground:**5.7** ft
4. Height of obstruction:**0.0** ft
5. Horizontal distance from obstruction to receiver: **.0.0** ft
6. Horizontal distance from unit to obstruction:**0.0** ft

Detailed Acoustics Information

| Octave Band Center Freq. Hz | 63 | 125 | 250 | 500 | 1k | 2k | 4k | 8k | Overall |
|-----------------------------|------|------|------|------|------|------|------|------|----------|
| A | 90.6 | 84.3 | 80.2 | 79.3 | 77.1 | 72.2 | 67.4 | 63.7 | 92.3 Lw |
| B | 64.4 | 68.2 | 71.6 | 76.1 | 77.1 | 73.4 | 68.4 | 62.6 | 81.7 LwA |
| C | 58.2 | 51.9 | 47.8 | 46.9 | 44.7 | 39.8 | 35.0 | 31.3 | 59.9 Lp |
| D | 32.0 | 35.8 | 39.2 | 43.7 | 44.7 | 41.0 | 36.0 | 30.2 | 49.3 LpA |

Legend

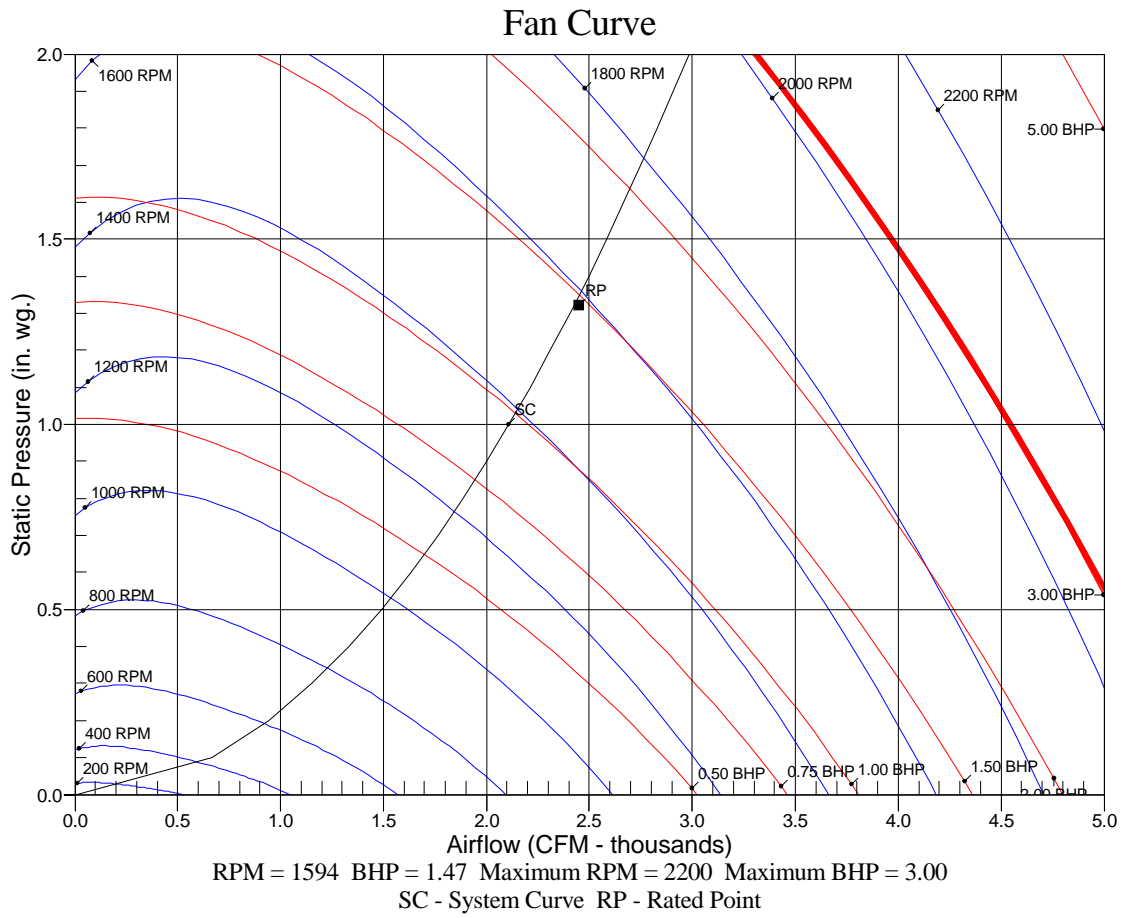
- A Sound Power Levels at Unit's Acoustic Center, Lw
- B A-Weighted Sound Power Levels at Unit's Acoustic Center, LwA
- C Sound Pressure Levels at Specific Distance from Unit, Lp
- D A-Weighted Sound Pressure Levels at Specific Distance from Unit, LpA

Calculation methods used in this program are patterned after the ASHRAE Guide; other ASHRAE Publications and the AHRI Acoustical Standards. While a very significant effort has been made to insure the technical accuracy of this program, it is assumed that the user is knowledgeable in the art of system sound estimation and is aware of the tolerances involved in real world acoustical estimation. This program makes certain assumptions as to the dominant sound sources and sound paths which may not always be appropriate to the real system being estimated. Because of this, no assurances can be offered that this software will always generate an accurate sound prediction from user supplied input data. If in doubt about the estimation of expected sound levels in a space, an Acoustical Engineer or a person with sound prediction expertise should be consulted.

Performance Summary For RTU-2

Project: Walgreens (PR) - #5058 Arnold, MO
Prepared By:

06/04/2025
09:36AM



RTU-3

**Tag Cover Sheet
Unit Report
Certified Drawing
Performance Report**

Unit Report For RTU-3

Project: Walgreens (PR) - #5058 Arnold, MO
 Prepared By:

06/04/2025
 09:36AM

Unit Parameters

Unit Model:.....**48GEFN07B3M5-3MAP0**
 Unit Size:.....**07 (6.0 Tons)**
 Volts-Phase-Hertz:.....**208-3-60**
 Heating Type:.....**Gas**
 Refrigerant:.....**R-454B**
 Heat Control:.....**High Gas Heat**
 Duct Cfg:.....**Vertical Supply / Vertical Return**
 DX Options:**Two Stage Cooling, Single Circuit with**

Humidi-MiZer

Lines and Filters

Gas Line Size: **3/4**
 Condensate Drain Line Size: **3/4**
 Return Air Filter Type: **Throwaway**
 Return Air Filter Quantity: **2**
 Return Air Filter Size: **20 x 24 x 4**

Selection includes construction throwaway filter into the base fan curve.

Unit Configuration

High Gas Heat
 Two Stage Cooling, Single Circuit with Humidi-MiZer
 RA Smoke Detector
 High Static - EcoBlue Vane Axial
 Al/Cu - Al/Cu - Louvered Hail Guards
 SystemVu Controls
 ULL Enthalpy Economizer with Barometric Relief and CO2 Sensor
 HP + NPCO + 4" MERV-13 Filters
 PMR + HACR
 Standard Packaging
 Humidi-MiZer™ Adaptive Dehumidification System

Warranty Information

1-Year parts(std.)
 5-Year compressor parts(std.)
 10-Year heat exchanger - Aluminized(std.)
 3-Year SystemVu Controller
COMPLETE UNIT YEAR 2-5 PARTS ONLY

Ordering Information

| Part Number | Description | Quantity |
|--------------------|--------------|----------|
| 48GEFN07B3M5-3MAP0 | Rooftop Unit | 1 |

Dimensions (ft. in.) & Weight (lb.) ***

Unit Length:.....**7' 4.125"**
 Unit Width:.....**4' 11.5"**
 Unit Height:.....**3' 5.25"**
Total Operating Weight:..... 929 lb

*** Weights and Dimensions are approximate. Weight does not include unit packaging. Approximate dimensions are provided primarily for shipping purposes. For exact dimensions and weights, refer to appropriate product data catalog.

Certified Drawing for RTU-3

Project: Walgreens (PR) - #5058 Arnold, MO
 Prepared By:

06/04/2025
 09:36AM

- NOTES:
1. DIMENSIONS ARE IN INCHES. DIMENSIONS IN [] ARE IN MILLIMETERS.
 2. CENTER OF GRAVITY
 3. DIRECTION OF AIR FLOW
 4. ALL VIEW DRAWN USING 3RD ANGLE

| UNIT | OUTDOOR COIL TYPE | J | K | H |
|----------|-------------------|---------------|--------------|--------------|
| 48GE-M07 | RTPF | 41 3/4 [1048] | 33 3/4 [857] | 15 7/8 [403] |
| 48GE-M08 | RTPF | 49 3/8 [1253] | 36 3/8 [925] | 15 7/8 [403] |
| 48GE-M09 | RTPF | 49 3/8 [1253] | 36 3/8 [925] | 15 7/8 [403] |

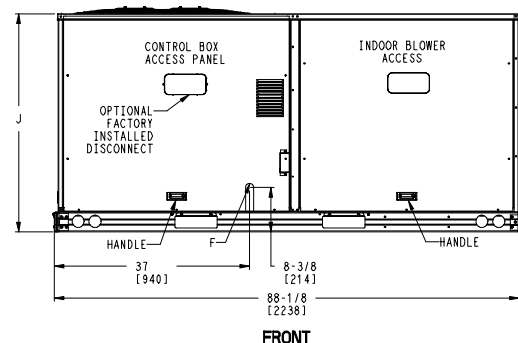
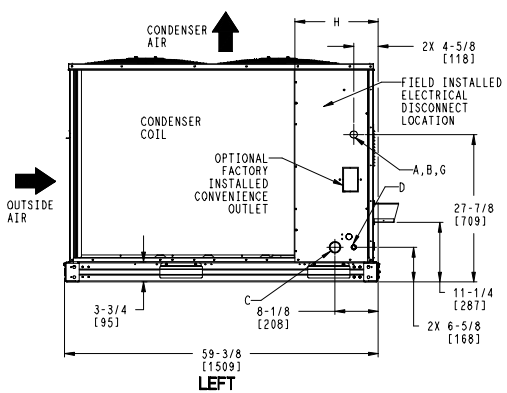
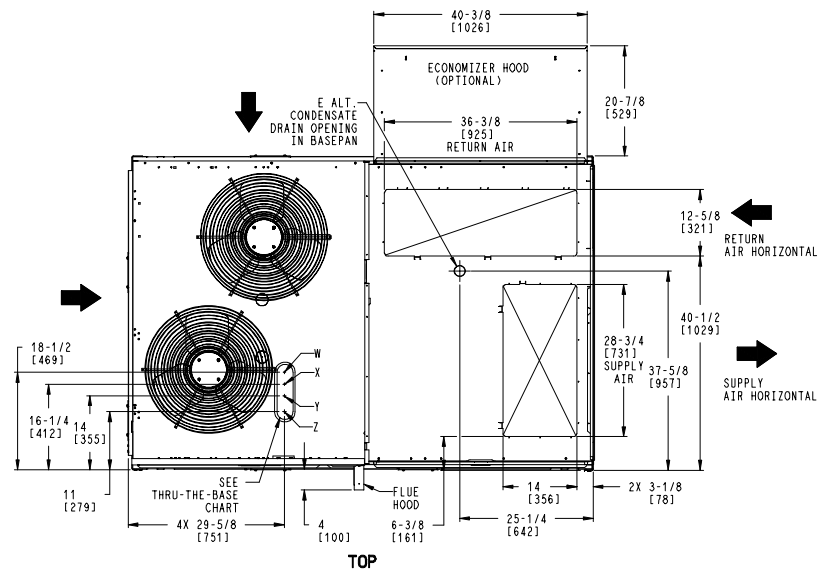
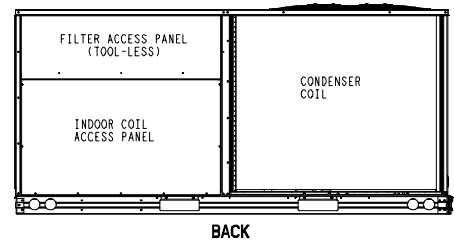
RTPF - ROUND TUBE, PLATE FIN (COPPER/ALUM)

THIS DOCUMENT IS THE PROPERTY OF CARRIER CORPORATION AND IS DELIVERED UPON THE EXPRESS CONDITION THAT THE CONTENTS WILL NOT BE DISCLOSED OR USED WITHOUT CARRIER CORPORATION'S WRITTEN CONSENT. SUBMISSION OF THESE DRAWINGS OR DOCUMENTS DOES NOT CONSTITUTE PART PERFORMANCE OR ACCEPTANCE OF CONTRACT.

| CONNECTION SIZES | |
|------------------|---|
| A | 1 3/8" [35] DIA FIELD POWER SUPPLY HOLE |
| B | 2 1/2" [64] DIA POWER SUPPLY KNOCKOUT |
| C | 1 3/4" [51] DIA GAUGE ACCESS PLUG |
| D | 7/8" [22] DIA FIELD CONTROL WIRING HOLE |
| E | 3/4" -14 NPT CONDENSATE DRAIN |
| F | 1/2" -14 NPT GAS CONNECTION |
| G | 3/4" -14 NPT GAS CONNECTION |
| | 2" [51] DIA POWER SUPPLY KNOCK-OUT |

| THRU-THE-BASE CHART (FIELD INST) | | | |
|---|------------------|-------------------------|---------------|
| THESE HOLES REQUIRED FOR USE WITH ACCY KITS: CRBTMPR002A01: GAS THRU CURB CRBTMPR004A01: GAS THRU BASEPAN | | | |
| THREADED CONDUIT SIZE | WIRE USE | REQ'D HOLE SIZES (MAX.) | |
| W | 1/2" | ACC. | 7/8" [22.2] |
| X | 1/2" | 24V | 7/8" [22.2] |
| Y | 1 1/4" [002,004] | POWER | 1 3/4" [44.4] |
| Z * | (004) 3/4" FPT | GAS | 1 3/4" [44.4] |
| * (002) PROVIDES 3/4" FPT THRU CURB FLANGE & FITTING. HOLE SIZE: 2" [50.8] | | | |

| THRU-THE-BASE CHART (FIOP) | |
|---|--|
| FOR "THRU-THE-BASEPAN" FACTORY OPTION, FITTINGS FOR ONLY X, Y, & Z ARE PROVIDED. ** | |
| ** FOR BELOW LISTED MODELS, A FIELD SUPPLIED 1/2" ADAPTER IS REQUIRED BETWEEN BASE PAN FITTING AND GAS VALVE: 48GED,S=07,08 | |



| | | | | | | |
|--------------------|--------|---------|------------|---|------------|-----|
| ITC CLASSIFICATION | SHEET | DATE | SUPERCEDES | 48GE 07-09 SINGLE ZONE ELECTRICAL COOLING WITH GAS HEAT | 48TM009899 | REV |
| U.S. ECCN:NSR | 1 OF 3 | 5/20/24 | - | | | - |

Certified Drawing for RTU-3

Project: Walgreens (PR) - #5058 Arnold, MO
 Prepared By:

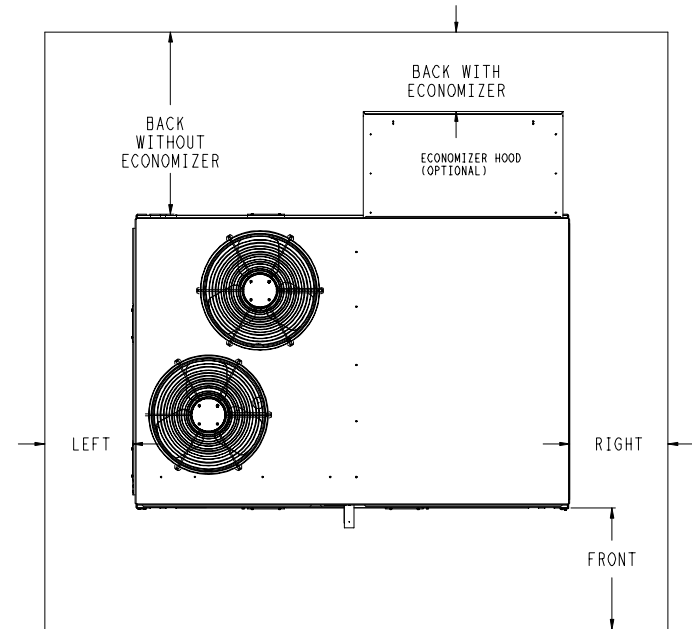
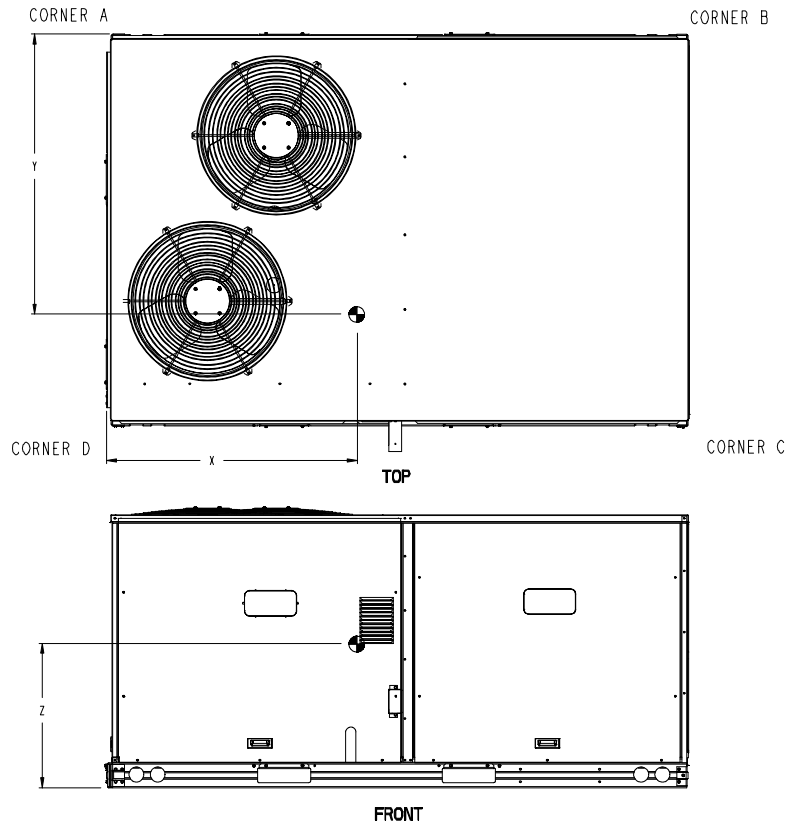
06/04/2025
 09:36AM

| UNIT | OUTDOOR COIL TYPE | STD. UNIT WEIGHT *** | | CORNER WEIGHT (A) | | CORNER WEIGHT (B) | | CORNER WEIGHT (C) | | CORNER WEIGHT (D) | | C.G. | | |
|----------|-------------------|----------------------|-----|-------------------|-----|-------------------|-----|-------------------|-----|-------------------|-----|--------|--------|--------|
| | | LBS. | KG. | LBS. | KG. | LBS. | KG. | LBS. | KG. | LBS. | KG. | X | Y | Z |
| 48GE-M07 | RTPF | 775 | 352 | 187 | 85 | 159 | 72 | 198 | 90 | 232 | 105 | 40 1/2 | 33 | 19 7/8 |
| 48GE-M08 | RTPF | 893 | 405 | 203 | 92 | 169 | 76 | 237 | 107 | 285 | 129 | 40 | 34 3/4 | 18 5/8 |
| 48GE-M09 | RTPF | 893 | 405 | 203 | 92 | 169 | 76 | 237 | 107 | 285 | 129 | 40 | 34 3/4 | 18 5/8 |

RTPF - ROUND TUBE, PLATE FIN (COPPER/ALUM)

Carrier THIS DOCUMENT IS THE PROPERTY OF CARRIER CORPORATION AND IS DELIVERED UPON THE EXPRESS CONDITION THAT THE CONTENTS WILL NOT BE DISCLOSED OR USED WITHOUT CARRIER CORPORATION'S WRITTEN CONSENT. SUBMISSION OF THESE DRAWINGS OR DOCUMENTS DOES NOT CONSTITUTE PART PERFORMANCE OR ACCEPTANCE OF CONTRACT.

*** STANDARD UNIT WEIGHT IS WITH LOW GAS HEAT AND WITHOUT PACKAGING. FOR OTHER OPTIONS AND ACCESSORIES, REFER TO THE PRODUCT DATA CATALOG.



NOTE:
 1. FOR ALL MINIMUM CLEARANCES LOCAL CODES OR JURISDICTIONS MAY PREVAIL.

| SURFACE | CLEARANCE | | |
|---------------|-------------------------------------|--|------------------------|
| | SERVICE WITH: CONDUCTIVE BARRIER | SERVICE WITH: NONCONDUCTIVE BARRIER | OPERATING CLEARANCE |
| FRONT | 48 [1219mm] | 36 [914mm] | 18 [457mm] |
| LEFT | 48 [1219mm] | 42 [1067mm] | 18 [457mm] |
| BACK W/O ECON | 48 [1219mm] | 42 [1067mm] | 18 [457mm] |
| BACK W/ECON | 36 [914mm] | 36 [914mm] | 18 [457mm] |
| RIGHT | 36 [914mm] | 36 [914mm] | 18 [457mm] |
| TOP | 72 [1829mm] | 72 [1829mm] | 72 [1829mm] |

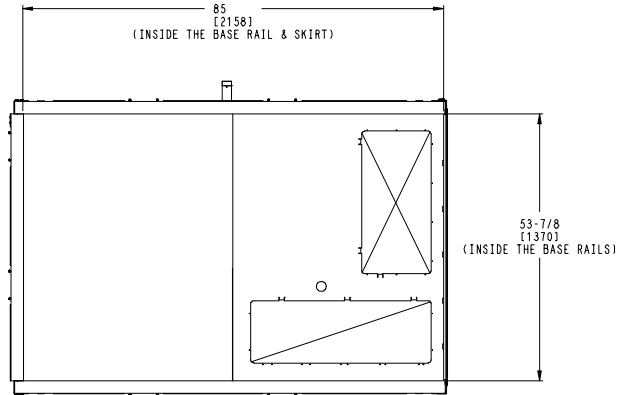
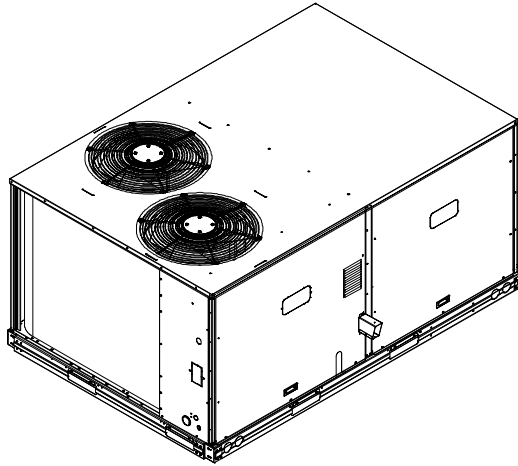
| | | | | | | |
|-------------------------------------|-----------------|-----------------|-----------------|---|------------|----------|
| ITC CLASSIFICATION U.S. ECCN:NSR | SHEET 2 OF 3 | DATE 5/20/24 | SUPERCEDES - | 48GE 07-09 SINGLE ZONE ELECTRICAL COOLING WITH GAS HEAT | 48TM009899 | REV - |
|-------------------------------------|-----------------|-----------------|-----------------|---|------------|----------|

Certified Drawing for RTU-3

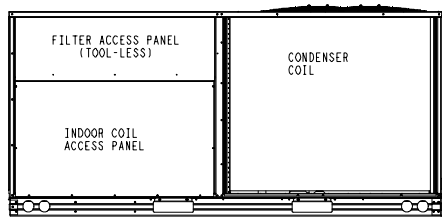
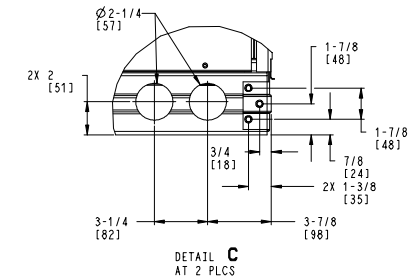
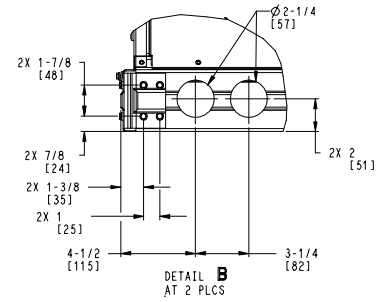
Project: Walgreens (PR) - #5058 Arnold, MO
 Prepared By:

06/04/2025
 09:36AM

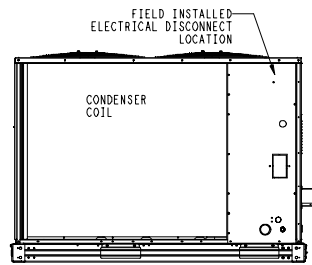
Carrier THIS DOCUMENT IS THE PROPERTY OF CARRIER CORPORATION AND IS DELIVERED UPON THE EXPRESS CONDITION THAT THE CONTENTS WILL NOT BE DISCLOSED OR USED WITHOUT CARRIER CORPORATION'S WRITTEN CONSENT. SUBMISSION OF THESE DRAWINGS OR DOCUMENTS DOES NOT CONSTITUTE PART PERFORMANCE OR ACCEPTANCE OF CONTRACT.



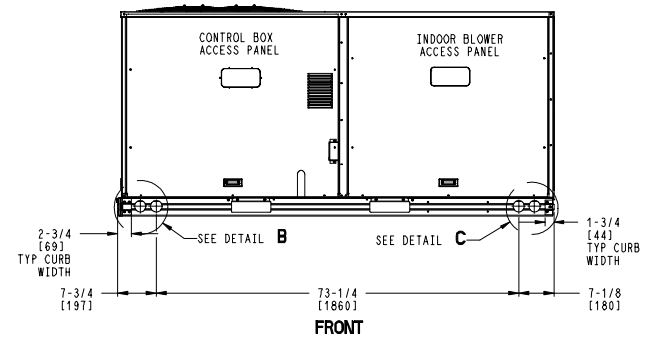
INSIDE BASERAIL DIMENSIONS
BOTTOM



BACK



LEFT



FRONT

| | | | | | | |
|--------------------|--------|---------|------------|---|------------|-----|
| ITC CLASSIFICATION | SHEET | DATE | SUPERCEDES | 48GE 07-09 SINGLE ZONE ELECTRICAL COOLING WITH GAS HEAT | 48TM009899 | REV |
| U.S. ECCN: NSR | 3 OF 3 | 5/20/24 | - | | | - |

Performance Summary For RTU-3

Project: Walgreens (PR) - #5058 Arnold, MO
Prepared By:

06/04/2025
09:36AM

Part Number:48GEFN07B3M5-3MAP0

Refrigerant:..... **R-454B**
ARI EER:..... **12.20**
IEER (Max Cooling at Normal Cooling Design Mode):..... **17.5**

Base Unit Dimensions

Unit Length:..... **88.1** in
Unit Width:..... **59.5** in
Unit Height:..... **41.3** in

Operating Weight

Base Unit Weight:..... **775** lb
High Gas Heat:..... **81** lb
Two Stage Cooling, Single Circuit with Humidi-MiZer:..... **25** lb
RA Smoke Detector:..... **7** lb
High Static - EcoBlue Vane Axial:..... **30** lb
SystemVu Controls:..... **2** lb
HP + NPCO + 4" MERV-13 Filters:..... **9** lb

Total Operating Weight:..... **929** lb

Unit

Unit Voltage-Phase-Hertz:..... **208-3-60**
Air Discharge:..... **Vertical**
Fan Drive Type:..... **Vane Axial**
Actual Airflow:..... **2000** CFM
Site Altitude:..... **564** ft

Cooling Performance

Condenser Entering Air DB:..... **95.0** F
Evaporator Entering Air DB:..... **75.5** F
Evaporator Entering Air WB:..... **63.6** F
Evaporator Entering Air Enthalpy:..... **29.14** BTU/lb
Evaporator Leaving Air DB:..... **54.1** F
Evaporator Leaving Air WB:..... **52.3** F
Evaporator Leaving Air Enthalpy:..... **21.72** BTU/lb
Gross Cooling Capacity:..... **65.40** MBH
Gross Sensible Capacity:..... **45.27** MBH
Compressor Power Input:..... **4.90** kW
Coil Bypass Factor:..... **0.130**

Mixed Air

Outdoor Air Airflow:..... **300** CFM
Outdoor Air DB:..... **95.0** F
Outdoor Air WB:..... **76.0** F
Outdoor Air Htg. Temp.:..... **2.0** F
Return Air DB:..... **72.0** F
Return Air WB:..... **61.0** F
Return Air Htg. Temp.:..... **70.0** F

Heating Performance

Heating Airflow:..... **2000** CFM
Entering Air Temp:..... **59.8** F
Leaving Air Temp:..... **117.9** F
Gas Heating Input Capacity:..... **115.0 / 150.0** MBH
Gas Heating Output Capacity:..... **96.0 / 123.0** MBH
Temperature Rise:..... **58.1** F
Thermal Efficiency (%):..... **82.0**

Supply Fan

Performance Summary For RTU-3

Project: Walgreens (PR) - #5058 Arnold, MO
 Prepared By:

06/04/2025
 09:36AM

| | | |
|--|---|-------|
| External Static Pressure:..... | 1.00 | in wg |
| Options / Accessories Static Pressure | | |
| Humidi-MiZer Dehumidification System:..... | 0.10 | in wg |
| Economizer:..... | 0.04 | in wg |
| MERV-13 Filter Kit: | 0.12 | in wg |
| Application External Static (ESP + Unit Opts/Acc.):..... | 1.27 | in wg |
| Fan RPM:..... | 1544 | |
| Fan Power:..... | 1.37 | BHP |
| NOTE: | Selected IFM RPM Range: 892 - 2200 | |

Selection includes construction throwaway filter into the base fan curve. This filter is not MERV Rated.

Filter pressure drop assumes a clean filter and is intended to be an estimate based on available supplier data. The actual pressure drop the unit experiences may vary due to alternate suppliers or filter loading over time.

Electrical Data

| | |
|-------------------------------------|------------------|
| Voltage Range: | 187 - 253 |
| Compressor #1 RLA:..... | 12.8 |
| Compressor #1 LRA:..... | 103 |
| Compressor #2 RLA:..... | 8.3 |
| Compressor #2 LRA:..... | 68 |
| Indoor Fan Motor Type:..... | HIGH |
| Indoor Fan Motor FLA (Total):..... | 7.5 |
| Combustion Fan Motor FLA (ea):..... | 0.48 |
| Power Supply MCA:..... | 35 |
| Disconnect Size FLA:..... | 36 |
| Disconnect Size LRA: | 190 |
| Electrical Convenience Outlet:..... | None |
| Outdoor Fan [Qty / FLA (ea)]: | 2 / 1.5 |
| Power Supply HACR:..... | 45 |

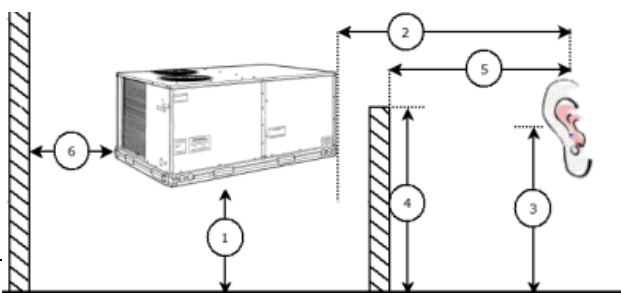
Control Panel SCCR: 5kA RMS at Rated Symmetrical Voltage

Acoustics

Sound Power Levels, db re 10E-12 Watts

| | Discharge | Inlet | Outdoor |
|------------|-----------|-------|---------|
| 63 Hz | 90.4 | 85.0 | 90.1 |
| 125 Hz | 86.8 | 81.8 | 82.6 |
| 250 Hz | 77.8 | 73.0 | 81.0 |
| 500 Hz | 74.6 | 67.6 | 79.4 |
| 1000 Hz | 75.7 | 67.2 | 77.0 |
| 2000 Hz | 72.2 | 61.6 | 73.0 |
| 4000 Hz | 67.7 | 54.0 | 70.4 |
| 8000 Hz | 58.8 | 48.3 | 66.7 |
| A-Weighted | 80.2 | 72.4 | 82.0 |

Advanced Acoustics



Performance Summary For RTU-3

Project: Walgreens (PR) - #5058 Arnold, MO
 Prepared By:

06/04/2025
 09:36AM

Advanced Acoustics Parameters

1. Unit height above ground:**30.0** ft
2. Horizontal distance from unit to receiver:**50.0** ft
3. Receiver height above ground:**5.7** ft
4. Height of obstruction:**0.0** ft
5. Horizontal distance from obstruction to receiver: **.0.0** ft
6. Horizontal distance from unit to obstruction:**0.0** ft

Detailed Acoustics Information

| Octave Band Center Freq. Hz | 63 | 125 | 250 | 500 | 1k | 2k | 4k | 8k | Overall |
|-----------------------------|------|------|------|------|------|------|------|------|----------|
| A | 90.1 | 82.6 | 81.0 | 79.4 | 77.0 | 73.0 | 70.4 | 66.7 | 91.8 Lw |
| B | 63.9 | 66.5 | 72.4 | 76.2 | 77.0 | 74.2 | 71.4 | 65.6 | 82.0 LwA |
| C | 57.7 | 50.2 | 48.6 | 47.0 | 44.6 | 40.6 | 38.0 | 34.3 | 59.4 Lp |
| D | 31.5 | 34.1 | 40.0 | 43.8 | 44.6 | 41.8 | 39.0 | 33.2 | 49.6 LpA |

Legend

- A Sound Power Levels at Unit's Acoustic Center, Lw
- B A-Weighted Sound Power Levels at Unit's Acoustic Center, LwA
- C Sound Pressure Levels at Specific Distance from Unit, Lp
- D A-Weighted Sound Pressure Levels at Specific Distance from Unit, LpA

Calculation methods used in this program are patterned after the ASHRAE Guide; other ASHRAE Publications and the AHRI Acoustical Standards. While a very significant effort has been made to insure the technical accuracy of this program, it is assumed that the user is knowledgeable in the art of system sound estimation and is aware of the tolerances involved in real world acoustical estimation. This program makes certain assumptions as to the dominant sound sources and sound paths which may not always be appropriate to the real system being estimated. Because of this, no assurances can be offered that this software will always generate an accurate sound prediction from user supplied input data. If in doubt about the estimation of expected sound levels in a space, an Acoustical Engineer or a person with sound prediction expertise should be consulted.

Performance Summary For RTU-3

Project: Walgreens (PR) - #5058 Arnold, MO
Prepared By:

06/04/2025
09:36AM

