

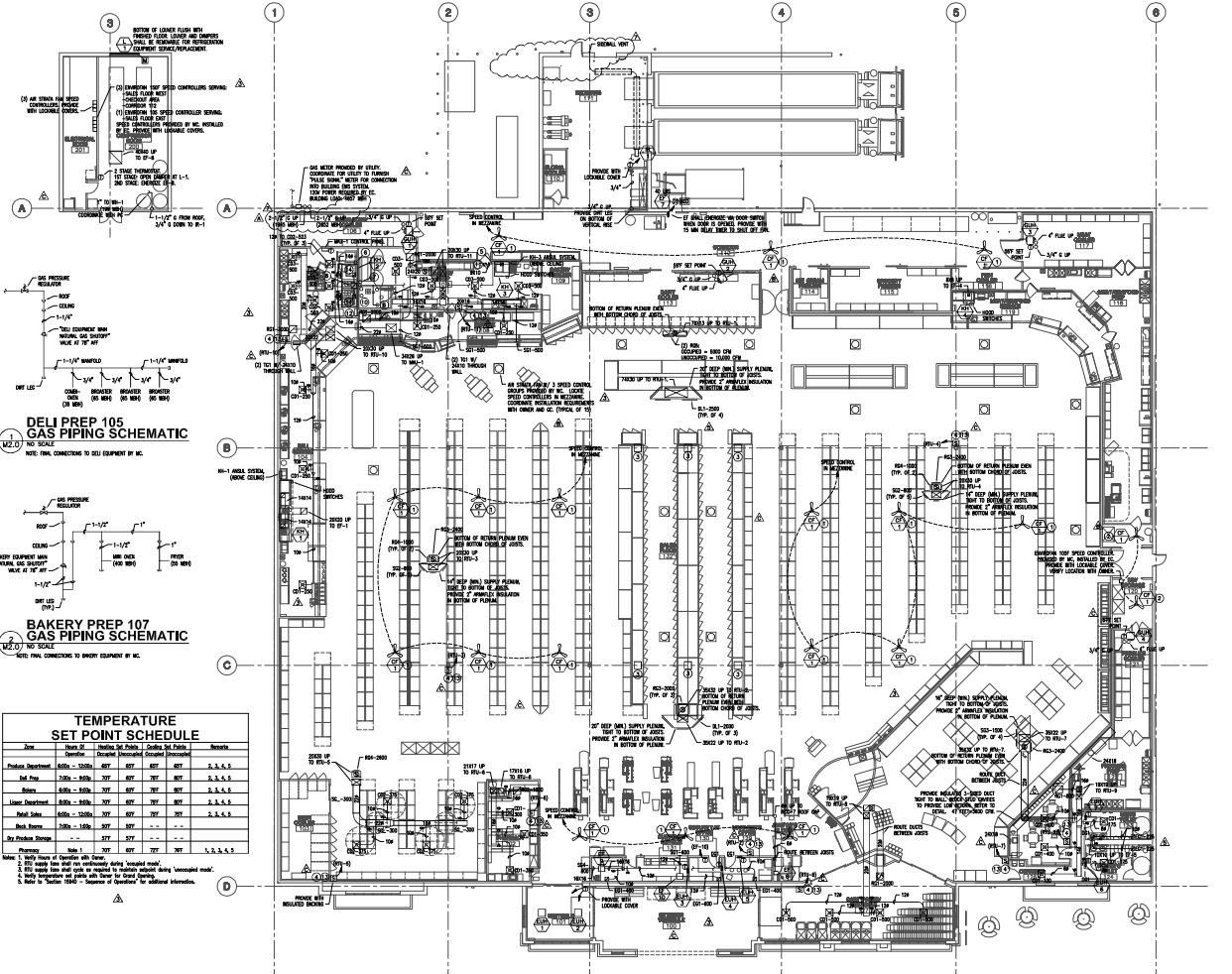
**DRAWING NOTES**  
 1. ALL CHANGED DIMENSIONS SHALL BE INDICATED IN ACCORDANCE WITH SPECIFICATIONS.  
 2. EXISTING ROOF DRAINAGE SYSTEM SHALL BE MAINTAINED IN ACCORDANCE WITH SPECIFICATIONS.  
 3. DUCTWORK LOCATED IN UNOCCUPIED SPACES SHALL BE INSTALLED IN ACCORDANCE WITH SPECIFICATIONS AND APPLICABLE CODES.

**KEY NOTES**  
 1. CEILING FIN TO BE INSTALLED BETWEEN ROOF JOISTS, BOTTOM OF FIN SHALL BE ABOVE BOTTOM CHORD OF ROOF JOIST.  
 2. BURNING CEILING FIN AS HIGH AS POSSIBLE.  
 3. DO NOT PROVIDE UNOCCUPIED SPACE ROOF JOIST STRUCTURE TO COVER TOP OF EXISTING PERMANENT CONCRETE DECK AND LOCATED PER I.C.  
 4. SPACING TO BE MAINTAINED 2" AT ALL JOINTS INCLUDING CONNECTION LOCATIONS WITH EXISTING AND NEW FINISH WITH EXISTING DECK.  
 5. PROVIDE SMOKE EXHAUSTORS AND NORMAL SMOKEY VALVES FOR EACH GAS APPLIANCE.  
 6. 1/2" OF 1/2" THROUGH ROOF FINISH SHIPPLY BUILT AT 18" INT. CLEARLY LABEL "NO GAS EQUIPMENT WITH NATURAL GAS SERVICE".  
 7. 1/2" OF 1/2" THROUGH ROOF FINISH SHIPPLY BUILT AT 18" INT. CLEARLY LABEL "NO GAS EQUIPMENT WITH NATURAL GAS SERVICE".  
 8. 1/2" OF 1/2" THROUGH ROOF FINISH SHIPPLY BUILT AT 18" INT. CLEARLY LABEL "NO GAS EQUIPMENT WITH NATURAL GAS SERVICE".  
 9. 1/2" OF 1/2" THROUGH ROOF FINISH SHIPPLY BUILT AT 18" INT. CLEARLY LABEL "NO GAS EQUIPMENT WITH NATURAL GAS SERVICE".  
 10. 1/2" OF 1/2" THROUGH ROOF FINISH SHIPPLY BUILT AT 18" INT. CLEARLY LABEL "NO GAS EQUIPMENT WITH NATURAL GAS SERVICE".  
 11. 1/2" OF 1/2" THROUGH ROOF FINISH SHIPPLY BUILT AT 18" INT. CLEARLY LABEL "NO GAS EQUIPMENT WITH NATURAL GAS SERVICE".  
 12. 1/2" OF 1/2" THROUGH ROOF FINISH SHIPPLY BUILT AT 18" INT. CLEARLY LABEL "NO GAS EQUIPMENT WITH NATURAL GAS SERVICE".  
 13. 1/2" OF 1/2" THROUGH ROOF FINISH SHIPPLY BUILT AT 18" INT. CLEARLY LABEL "NO GAS EQUIPMENT WITH NATURAL GAS SERVICE".  
 14. 1/2" OF 1/2" THROUGH ROOF FINISH SHIPPLY BUILT AT 18" INT. CLEARLY LABEL "NO GAS EQUIPMENT WITH NATURAL GAS SERVICE".  
 15. 1/2" OF 1/2" THROUGH ROOF FINISH SHIPPLY BUILT AT 18" INT. CLEARLY LABEL "NO GAS EQUIPMENT WITH NATURAL GAS SERVICE".  
 16. 1/2" OF 1/2" THROUGH ROOF FINISH SHIPPLY BUILT AT 18" INT. CLEARLY LABEL "NO GAS EQUIPMENT WITH NATURAL GAS SERVICE".  
 17. 1/2" OF 1/2" THROUGH ROOF FINISH SHIPPLY BUILT AT 18" INT. CLEARLY LABEL "NO GAS EQUIPMENT WITH NATURAL GAS SERVICE".  
 18. 1/2" OF 1/2" THROUGH ROOF FINISH SHIPPLY BUILT AT 18" INT. CLEARLY LABEL "NO GAS EQUIPMENT WITH NATURAL GAS SERVICE".  
 19. 1/2" OF 1/2" THROUGH ROOF FINISH SHIPPLY BUILT AT 18" INT. CLEARLY LABEL "NO GAS EQUIPMENT WITH NATURAL GAS SERVICE".  
 20. 1/2" OF 1/2" THROUGH ROOF FINISH SHIPPLY BUILT AT 18" INT. CLEARLY LABEL "NO GAS EQUIPMENT WITH NATURAL GAS SERVICE".  
 21. 1/2" OF 1/2" THROUGH ROOF FINISH SHIPPLY BUILT AT 18" INT. CLEARLY LABEL "NO GAS EQUIPMENT WITH NATURAL GAS SERVICE".  
 22. 1/2" OF 1/2" THROUGH ROOF FINISH SHIPPLY BUILT AT 18" INT. CLEARLY LABEL "NO GAS EQUIPMENT WITH NATURAL GAS SERVICE".  
 23. 1/2" OF 1/2" THROUGH ROOF FINISH SHIPPLY BUILT AT 18" INT. CLEARLY LABEL "NO GAS EQUIPMENT WITH NATURAL GAS SERVICE".  
 24. 1/2" OF 1/2" THROUGH ROOF FINISH SHIPPLY BUILT AT 18" INT. CLEARLY LABEL "NO GAS EQUIPMENT WITH NATURAL GAS SERVICE".  
 25. 1/2" OF 1/2" THROUGH ROOF FINISH SHIPPLY BUILT AT 18" INT. CLEARLY LABEL "NO GAS EQUIPMENT WITH NATURAL GAS SERVICE".  
 26. 1/2" OF 1/2" THROUGH ROOF FINISH SHIPPLY BUILT AT 18" INT. CLEARLY LABEL "NO GAS EQUIPMENT WITH NATURAL GAS SERVICE".  
 27. 1/2" OF 1/2" THROUGH ROOF FINISH SHIPPLY BUILT AT 18" INT. CLEARLY LABEL "NO GAS EQUIPMENT WITH NATURAL GAS SERVICE".  
 28. 1/2" OF 1/2" THROUGH ROOF FINISH SHIPPLY BUILT AT 18" INT. CLEARLY LABEL "NO GAS EQUIPMENT WITH NATURAL GAS SERVICE".  
 29. 1/2" OF 1/2" THROUGH ROOF FINISH SHIPPLY BUILT AT 18" INT. CLEARLY LABEL "NO GAS EQUIPMENT WITH NATURAL GAS SERVICE".  
 30. 1/2" OF 1/2" THROUGH ROOF FINISH SHIPPLY BUILT AT 18" INT. CLEARLY LABEL "NO GAS EQUIPMENT WITH NATURAL GAS SERVICE".  
 31. 1/2" OF 1/2" THROUGH ROOF FINISH SHIPPLY BUILT AT 18" INT. CLEARLY LABEL "NO GAS EQUIPMENT WITH NATURAL GAS SERVICE".  
 32. 1/2" OF 1/2" THROUGH ROOF FINISH SHIPPLY BUILT AT 18" INT. CLEARLY LABEL "NO GAS EQUIPMENT WITH NATURAL GAS SERVICE".  
 33. 1/2" OF 1/2" THROUGH ROOF FINISH SHIPPLY BUILT AT 18" INT. CLEARLY LABEL "NO GAS EQUIPMENT WITH NATURAL GAS SERVICE".  
 34. 1/2" OF 1/2" THROUGH ROOF FINISH SHIPPLY BUILT AT 18" INT. CLEARLY LABEL "NO GAS EQUIPMENT WITH NATURAL GAS SERVICE".  
 35. 1/2" OF 1/2" THROUGH ROOF FINISH SHIPPLY BUILT AT 18" INT. CLEARLY LABEL "NO GAS EQUIPMENT WITH NATURAL GAS SERVICE".  
 36. 1/2" OF 1/2" THROUGH ROOF FINISH SHIPPLY BUILT AT 18" INT. CLEARLY LABEL "NO GAS EQUIPMENT WITH NATURAL GAS SERVICE".  
 37. 1/2" OF 1/2" THROUGH ROOF FINISH SHIPPLY BUILT AT 18" INT. CLEARLY LABEL "NO GAS EQUIPMENT WITH NATURAL GAS SERVICE".  
 38. 1/2" OF 1/2" THROUGH ROOF FINISH SHIPPLY BUILT AT 18" INT. CLEARLY LABEL "NO GAS EQUIPMENT WITH NATURAL GAS SERVICE".  
 39. 1/2" OF 1/2" THROUGH ROOF FINISH SHIPPLY BUILT AT 18" INT. CLEARLY LABEL "NO GAS EQUIPMENT WITH NATURAL GAS SERVICE".  
 40. 1/2" OF 1/2" THROUGH ROOF FINISH SHIPPLY BUILT AT 18" INT. CLEARLY LABEL "NO GAS EQUIPMENT WITH NATURAL GAS SERVICE".  
 41. 1/2" OF 1/2" THROUGH ROOF FINISH SHIPPLY BUILT AT 18" INT. CLEARLY LABEL "NO GAS EQUIPMENT WITH NATURAL GAS SERVICE".  
 42. 1/2" OF 1/2" THROUGH ROOF FINISH SHIPPLY BUILT AT 18" INT. CLEARLY LABEL "NO GAS EQUIPMENT WITH NATURAL GAS SERVICE".  
 43. 1/2" OF 1/2" THROUGH ROOF FINISH SHIPPLY BUILT AT 18" INT. CLEARLY LABEL "NO GAS EQUIPMENT WITH NATURAL GAS SERVICE".  
 44. 1/2" OF 1/2" THROUGH ROOF FINISH SHIPPLY BUILT AT 18" INT. CLEARLY LABEL "NO GAS EQUIPMENT WITH NATURAL GAS SERVICE".  
 45. 1/2" OF 1/2" THROUGH ROOF FINISH SHIPPLY BUILT AT 18" INT. CLEARLY LABEL "NO GAS EQUIPMENT WITH NATURAL GAS SERVICE".  
 46. 1/2" OF 1/2" THROUGH ROOF FINISH SHIPPLY BUILT AT 18" INT. CLEARLY LABEL "NO GAS EQUIPMENT WITH NATURAL GAS SERVICE".  
 47. 1/2" OF 1/2" THROUGH ROOF FINISH SHIPPLY BUILT AT 18" INT. CLEARLY LABEL "NO GAS EQUIPMENT WITH NATURAL GAS SERVICE".  
 48. 1/2" OF 1/2" THROUGH ROOF FINISH SHIPPLY BUILT AT 18" INT. CLEARLY LABEL "NO GAS EQUIPMENT WITH NATURAL GAS SERVICE".  
 49. 1/2" OF 1/2" THROUGH ROOF FINISH SHIPPLY BUILT AT 18" INT. CLEARLY LABEL "NO GAS EQUIPMENT WITH NATURAL GAS SERVICE".  
 50. 1/2" OF 1/2" THROUGH ROOF FINISH SHIPPLY BUILT AT 18" INT. CLEARLY LABEL "NO GAS EQUIPMENT WITH NATURAL GAS SERVICE".  
 51. 1/2" OF 1/2" THROUGH ROOF FINISH SHIPPLY BUILT AT 18" INT. CLEARLY LABEL "NO GAS EQUIPMENT WITH NATURAL GAS SERVICE".  
 52. 1/2" OF 1/2" THROUGH ROOF FINISH SHIPPLY BUILT AT 18" INT. CLEARLY LABEL "NO GAS EQUIPMENT WITH NATURAL GAS SERVICE".  
 53. 1/2" OF 1/2" THROUGH ROOF FINISH SHIPPLY BUILT AT 18" INT. CLEARLY LABEL "NO GAS EQUIPMENT WITH NATURAL GAS SERVICE".  
 54. 1/2" OF 1/2" THROUGH ROOF FINISH SHIPPLY BUILT AT 18" INT. CLEARLY LABEL "NO GAS EQUIPMENT WITH NATURAL GAS SERVICE".  
 55. 1/2" OF 1/2" THROUGH ROOF FINISH SHIPPLY BUILT AT 18" INT. CLEARLY LABEL "NO GAS EQUIPMENT WITH NATURAL GAS SERVICE".  
 56. 1/2" OF 1/2" THROUGH ROOF FINISH SHIPPLY BUILT AT 18" INT. CLEARLY LABEL "NO GAS EQUIPMENT WITH NATURAL GAS SERVICE".  
 57. 1/2" OF 1/2" THROUGH ROOF FINISH SHIPPLY BUILT AT 18" INT. CLEARLY LABEL "NO GAS EQUIPMENT WITH NATURAL GAS SERVICE".  
 58. 1/2" OF 1/2" THROUGH ROOF FINISH SHIPPLY BUILT AT 18" INT. CLEARLY LABEL "NO GAS EQUIPMENT WITH NATURAL GAS SERVICE".  
 59. 1/2" OF 1/2" THROUGH ROOF FINISH SHIPPLY BUILT AT 18" INT. CLEARLY LABEL "NO GAS EQUIPMENT WITH NATURAL GAS SERVICE".  
 60. 1/2" OF 1/2" THROUGH ROOF FINISH SHIPPLY BUILT AT 18" INT. CLEARLY LABEL "NO GAS EQUIPMENT WITH NATURAL GAS SERVICE".  
 61. 1/2" OF 1/2" THROUGH ROOF FINISH SHIPPLY BUILT AT 18" INT. CLEARLY LABEL "NO GAS EQUIPMENT WITH NATURAL GAS SERVICE".  
 62. 1/2" OF 1/2" THROUGH ROOF FINISH SHIPPLY BUILT AT 18" INT. CLEARLY LABEL "NO GAS EQUIPMENT WITH NATURAL GAS SERVICE".  
 63. 1/2" OF 1/2" THROUGH ROOF FINISH SHIPPLY BUILT AT 18" INT. CLEARLY LABEL "NO GAS EQUIPMENT WITH NATURAL GAS SERVICE".  
 64. 1/2" OF 1/2" THROUGH ROOF FINISH SHIPPLY BUILT AT 18" INT. CLEARLY LABEL "NO GAS EQUIPMENT WITH NATURAL GAS SERVICE".  
 65. 1/2" OF 1/2" THROUGH ROOF FINISH SHIPPLY BUILT AT 18" INT. CLEARLY LABEL "NO GAS EQUIPMENT WITH NATURAL GAS SERVICE".  
 66. 1/2" OF 1/2" THROUGH ROOF FINISH SHIPPLY BUILT AT 18" INT. CLEARLY LABEL "NO GAS EQUIPMENT WITH NATURAL GAS SERVICE".  
 67. 1/2" OF 1/2" THROUGH ROOF FINISH SHIPPLY BUILT AT 18" INT. CLEARLY LABEL "NO GAS EQUIPMENT WITH NATURAL GAS SERVICE".  
 68. 1/2" OF 1/2" THROUGH ROOF FINISH SHIPPLY BUILT AT 18" INT. CLEARLY LABEL "NO GAS EQUIPMENT WITH NATURAL GAS SERVICE".  
 69. 1/2" OF 1/2" THROUGH ROOF FINISH SHIPPLY BUILT AT 18" INT. CLEARLY LABEL "NO GAS EQUIPMENT WITH NATURAL GAS SERVICE".  
 70. 1/2" OF 1/2" THROUGH ROOF FINISH SHIPPLY BUILT AT 18" INT. CLEARLY LABEL "NO GAS EQUIPMENT WITH NATURAL GAS SERVICE".  
 71. 1/2" OF 1/2" THROUGH ROOF FINISH SHIPPLY BUILT AT 18" INT. CLEARLY LABEL "NO GAS EQUIPMENT WITH NATURAL GAS SERVICE".  
 72. 1/2" OF 1/2" THROUGH ROOF FINISH SHIPPLY BUILT AT 18" INT. CLEARLY LABEL "NO GAS EQUIPMENT WITH NATURAL GAS SERVICE".  
 73. 1/2" OF 1/2" THROUGH ROOF FINISH SHIPPLY BUILT AT 18" INT. CLEARLY LABEL "NO GAS EQUIPMENT WITH NATURAL GAS SERVICE".  
 74. 1/2" OF 1/2" THROUGH ROOF FINISH SHIPPLY BUILT AT 18" INT. CLEARLY LABEL "NO GAS EQUIPMENT WITH NATURAL GAS SERVICE".  
 75. 1/2" OF 1/2" THROUGH ROOF FINISH SHIPPLY BUILT AT 18" INT. CLEARLY LABEL "NO GAS EQUIPMENT WITH NATURAL GAS SERVICE".  
 76. 1/2" OF 1/2" THROUGH ROOF FINISH SHIPPLY BUILT AT 18" INT. CLEARLY LABEL "NO GAS EQUIPMENT WITH NATURAL GAS SERVICE".  
 77. 1/2" OF 1/2" THROUGH ROOF FINISH SHIPPLY BUILT AT 18" INT. CLEARLY LABEL "NO GAS EQUIPMENT WITH NATURAL GAS SERVICE".  
 78. 1/2" OF 1/2" THROUGH ROOF FINISH SHIPPLY BUILT AT 18" INT. CLEARLY LABEL "NO GAS EQUIPMENT WITH NATURAL GAS SERVICE".  
 79. 1/2" OF 1/2" THROUGH ROOF FINISH SHIPPLY BUILT AT 18" INT. CLEARLY LABEL "NO GAS EQUIPMENT WITH NATURAL GAS SERVICE".  
 80. 1/2" OF 1/2" THROUGH ROOF FINISH SHIPPLY BUILT AT 18" INT. CLEARLY LABEL "NO GAS EQUIPMENT WITH NATURAL GAS SERVICE".  
 81. 1/2" OF 1/2" THROUGH ROOF FINISH SHIPPLY BUILT AT 18" INT. CLEARLY LABEL "NO GAS EQUIPMENT WITH NATURAL GAS SERVICE".  
 82. 1/2" OF 1/2" THROUGH ROOF FINISH SHIPPLY BUILT AT 18" INT. CLEARLY LABEL "NO GAS EQUIPMENT WITH NATURAL GAS SERVICE".  
 83. 1/2" OF 1/2" THROUGH ROOF FINISH SHIPPLY BUILT AT 18" INT. CLEARLY LABEL "NO GAS EQUIPMENT WITH NATURAL GAS SERVICE".  
 84. 1/2" OF 1/2" THROUGH ROOF FINISH SHIPPLY BUILT AT 18" INT. CLEARLY LABEL "NO GAS EQUIPMENT WITH NATURAL GAS SERVICE".  
 85. 1/2" OF 1/2" THROUGH ROOF FINISH SHIPPLY BUILT AT 18" INT. CLEARLY LABEL "NO GAS EQUIPMENT WITH NATURAL GAS SERVICE".  
 86. 1/2" OF 1/2" THROUGH ROOF FINISH SHIPPLY BUILT AT 18" INT. CLEARLY LABEL "NO GAS EQUIPMENT WITH NATURAL GAS SERVICE".  
 87. 1/2" OF 1/2" THROUGH ROOF FINISH SHIPPLY BUILT AT 18" INT. CLEARLY LABEL "NO GAS EQUIPMENT WITH NATURAL GAS SERVICE".  
 88. 1/2" OF 1/2" THROUGH ROOF FINISH SHIPPLY BUILT AT 18" INT. CLEARLY LABEL "NO GAS EQUIPMENT WITH NATURAL GAS SERVICE".  
 89. 1/2" OF 1/2" THROUGH ROOF FINISH SHIPPLY BUILT AT 18" INT. CLEARLY LABEL "NO GAS EQUIPMENT WITH NATURAL GAS SERVICE".  
 90. 1/2" OF 1/2" THROUGH ROOF FINISH SHIPPLY BUILT AT 18" INT. CLEARLY LABEL "NO GAS EQUIPMENT WITH NATURAL GAS SERVICE".  
 91. 1/2" OF 1/2" THROUGH ROOF FINISH SHIPPLY BUILT AT 18" INT. CLEARLY LABEL "NO GAS EQUIPMENT WITH NATURAL GAS SERVICE".  
 92. 1/2" OF 1/2" THROUGH ROOF FINISH SHIPPLY BUILT AT 18" INT. CLEARLY LABEL "NO GAS EQUIPMENT WITH NATURAL GAS SERVICE".  
 93. 1/2" OF 1/2" THROUGH ROOF FINISH SHIPPLY BUILT AT 18" INT. CLEARLY LABEL "NO GAS EQUIPMENT WITH NATURAL GAS SERVICE".  
 94. 1/2" OF 1/2" THROUGH ROOF FINISH SHIPPLY BUILT AT 18" INT. CLEARLY LABEL "NO GAS EQUIPMENT WITH NATURAL GAS SERVICE".  
 95. 1/2" OF 1/2" THROUGH ROOF FINISH SHIPPLY BUILT AT 18" INT. CLEARLY LABEL "NO GAS EQUIPMENT WITH NATURAL GAS SERVICE".  
 96. 1/2" OF 1/2" THROUGH ROOF FINISH SHIPPLY BUILT AT 18" INT. CLEARLY LABEL "NO GAS EQUIPMENT WITH NATURAL GAS SERVICE".  
 97. 1/2" OF 1/2" THROUGH ROOF FINISH SHIPPLY BUILT AT 18" INT. CLEARLY LABEL "NO GAS EQUIPMENT WITH NATURAL GAS SERVICE".  
 98. 1/2" OF 1/2" THROUGH ROOF FINISH SHIPPLY BUILT AT 18" INT. CLEARLY LABEL "NO GAS EQUIPMENT WITH NATURAL GAS SERVICE".  
 99. 1/2" OF 1/2" THROUGH ROOF FINISH SHIPPLY BUILT AT 18" INT. CLEARLY LABEL "NO GAS EQUIPMENT WITH NATURAL GAS SERVICE".  
 100. 1/2" OF 1/2" THROUGH ROOF FINISH SHIPPLY BUILT AT 18" INT. CLEARLY LABEL "NO GAS EQUIPMENT WITH NATURAL GAS SERVICE".

INFORMATION ON THIS DRAWING TAKES PRECEDENCE OVER THE SPECIFICATIONS MANUAL BY THE DOCUMENT'S DATE AND REVISION INFORMATION.

NO.	DATE	BY	DESCRIPTION
1	08/10/08		ISSUED FOR ADDENDUM A
2	08/26/08		REVISED PER ADDENDUM B
3	10/22/08		REVISED PER ADDENDUM C
4	11/21/08		CONSTRUCTION BULLETIN #3
5	12/08/08		CONSTRUCTION BULLETIN #5
6	01/22/09		CONSTRUCTION BULLETIN #7

**MECHANICAL PLAN**  
 SCALE: 3/8"=1'-0" SHEET:  
 PROJECT #: 3326-1727  
 DRAWN BY: TMC CHKD BY: MGS  
 DESIG. SUBMITTAL: **M2.0**



**TEMPERATURE SET POINT SCHEDULE**

Zone	Room #	Temperature Set Point - Cooling Set Point	Temperature Set Point - Heating Set Point	Remarks
Public Department	600 - 1200	67	67	3, 3, 4, 5
Mkt. Prep	200 - 500	57	57	3, 3, 4, 5
Office	800 - 900	67	67	3, 3, 4, 5
Lower Department	300 - 500	67	67	3, 3, 4, 5
Pub. Prep	600 - 1200	57	57	3, 3, 4, 5
Pub. Prep	200 - 500	57	57	3, 3, 4, 5
Office	800 - 900	67	67	3, 3, 4, 5

Notes:  
 1. Set Point of Operation will be as shown.  
 2. Set Point will be set and will be subject to change based on load.  
 3. Set Point will be set and will be subject to change based on load.  
 4. Set Point will be set and will be subject to change based on load.

**MECHANICAL PLAN**  
 SCALE: 3/8"=1'-0"

10/27/08 FOR CONSTRUCTION SET