

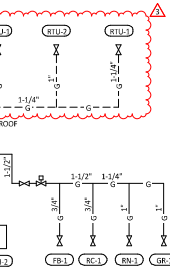
PLUMBING FIXTURE SUPPLY CONNECTIONS

TAG	DESCRIPTION	CONNECTION SIZE		ROUGH-IN TYPE	WFSU			TOTAL COUNT	TOTAL WFSU
		CW	HW		CW	HW	TOTAL		
ANGL 3/8"	BRASS CRAFT KTR19 OR EQUAL (BRASS/CHROME 1/4 TURN ANGLED STOP WITH 3/8" COMPRESSION CONNECTION)								
ANGL 1/2"	BRASS CRAFT R89Y C OR EQUAL (BRASS/CHROME MULTI-TURN ANGLED STOP WITH 1/2" COMPRESSION CONNECTION)								
ANGL 3/4"	OVERFLOW 74342-NL W/ 3/4" SWEAT X MIP ADAPTER OR EQUAL (BRASS ANGLE STOP W/ 3/4" TIP INLET AND OUTLET)								
HOSE 1/2"	PROVIDE COPPER PIPE IN CONNECTION SIZE SHOWN TO FIXTURE								
DIRCT	PROVIDE COPPER PIPE IN CONNECTION SIZE SHOWN TO FIXTURE								
HOSE 1/2"	AIRFLOWNAD BRASS WMS0P OR EQUAL (BRASS/CHROME WASHING MACHINE VALVE W/ 3/4" MHT OUTLET)								
MIP	PROVIDE PIPE WITH MIP THREAD S'UBRED OUT ON WALL IN CONNECTION SIZE SHOWN AND LENGTH COMPATIBLE WITH FIXTURE AND WALL MATERIAL/FINISHES.								
BFP-1	RPZ BACKFLOW PREVENTER	1/2"	1/2"	DIRCT	0	0	0	1	0
BFP-2	RPZ BACKFLOW PREVENTER	1-1/2"	1-1/2"	DIRCT	0	0	0	1	0
DM-1	DISH SANITIZING MACHINE (PUMPED OUTLET)	0"	1/2"	HOSE 1/2"	0	3	3	1	3
ET-1	EXPANSION TANK	3/4"	3/4"	DIRCT	0	0	0	1	0
HB-1	CHEMICAL DISPENSER HOSE BIB	1/2"	1/2"	MIP	2.25	2.25	3	2	6
HB-2	VEGETABLE WASH HOSE BIB	1/2"	1/2"	MIP	1.5	1.5	1.5	1	1.5
HS-1B	BESTROOM HAND SINK FAUCET	1/2"	1/2"	MIP	1.5	1.5	2	2	4
HS-2	KITCHEN HAND SINK	1/2"	1/2"	ANGLE 3/8"	1.5	1.5	2	4	8
IM-1	ICE MAKER - BSH	1/2"	1/2"	HOSE 1/2"	1	1	1	1	1
IM-2	ICE MAKER - SODA	1/2"	1/2"	HOSE 1/2"	1	1	1	1	1
MIP-1B	MOP SINK FAUCET	1/2"	1/2"	MIP	2.25	2.25	3	1	3
PF-1	SPEED RILL FAUCET	3/8"	3/8"	MIP	1.5	1.5	1.5	1	1.5
RF-1	FREEZE PROOF ROOF HYDRANT	3/4"	3/4"	DIRCT	1	1	1	1	1
SC-1	BAG-IN-BOX SODA RACK WITH CARBONATORS	1/2"	1/2"	ANGLE 3/8"	1	1	1	1	1
SK-1	THREE COMPARTMENT SINK	1/2"	1/2"	ANGLE 1/2"	3	3	4	1	4
SK-2	PREP SINK	3/4"	3/4"	ANGLE 3/4"	3	3	4	1	4
TP-3	TRAP PRIMER (THREE-FOUR FLOOR DRAINS)	1/2"	1/2"	DIRCT	0	0	0	2	0
WC-1	WATER CLOSET	1/2"	1/2"	ANGLE 3/8"	2	2	2	2	4
WH-1	FREEZE PROOF WALL HYDRANT	3/4"	3/4"	DIRCT	1	1	1	3	3
GRAND TOTAL									46

PLUMBING GAS CONNECTIONS

TAG	DESCRIPTION	CONNECTION SIZE	EQUIVALENT LENGTH	INPUT
DWH-1	WATER HEATER (GAS TANKLESS)	3/4"	95'	199,000 Btu/h
DWH-2	WATER HEATER (GAS TANKLESS)	3/4"	95'	199,000 Btu/h
TR-3	GAS TRAP	3/4"	115'	90,000 Btu/h
GR-1	GAS GRIDDLE	1"	125'	120,000 Btu/h
MAU-1	DIRECT-FIBED MAKEUP AIR UNIT	1/2"	105'	88,241 Btu/h
RC-1	RICE COOKER	3/4"	120'	33,000 Btu/h
DWH-3	GAS BURNER RANGE	3/4"	125'	190,000 Btu/h
RTU-1	KITCHEN ROOFTOP UNIT	3/4"	130'	180,000 Btu/h
RTU-2	DINING ROOM ROOFTOP UNIT	3/4"	135'	125,000 Btu/h
GRAND TOTAL			MAX 125'	1,226,243 Btu/h

- NOTES:
 1. PRESSURE REQUIRED AFTER METER: 7" W.C.
 2. DISTANCES ARE APPROXIMATE



GAS DISTRIBUTION DIAGRAM

NOT TO SCALE

PLUMBING SUPPLY PLAN NOTES

- CONNECT TO EXISTING 1-1/2" DOMESTIC WATER SERVICE LOCATED IN BASEMENT OF ADJACENT UNIT.
- PROVIDE 1/2" FILTERED WATER TO THE BAG-IN-BOX SODA CARBONATOR AT 102" AFF. SODA CARBONATOR SHALL HAVE AN INTEGRAL ASSE 1022-RATED CARBONATED BEVERAGE BACKFLOW PREVENTION DEVICE.
- PROVIDE WATER HEATERS (DWH-1 AND DWH-2) PER DETAIL 1/PT00.
- PROVIDE WATER FILTERS MOUNTED TO WALL PER DETAIL 1/PT00. PROVIDE 1/2" SUPPLY PIPES FROM FILTERS TO ICE MAKER AND SODA CARBONATOR AS SHOWN.
- PROVIDE 1/2" FILTERED WATER ROUGH-INS TO THE ICE MAKER AT 56" AFF. PROVIDE 6" LONG STAINLESS STEEL FLEXIBLE BRAIDED WASHING MACHINE WATER CONNECTOR WITH MINIMUM 0.43" ID (BRASSCRAFT 5L12-72WA-F OR EQUAL) FOR FIRM CONNECTION TO ICE MAKER.
- PROVIDE DOMESTIC WATER ROUGH-INS FOR THE MOP BASIN FAUCET AT 38" AFF. PROVIDE DOMESTIC WATER ROUGH-INS FOR THE CHEMICAL DISPENSER FAUCET (HB-1) AT 64" AFF. DIRECTLY ABOVE THE MOP BASIN FAUCET. SEE ARCHITECTURAL ELEVATION FOR ADDITIONAL INFORMATION.
- CONNECT TO EXISTING GAS SERVICE FROM METER LOCATED IN BASEMENT OF ADJACENT UNIT.
- PROVIDE GAS CONNECTIONS TO THE COOKING EQUIPMENT PER DETAIL 1/PT00.
- SUPPORT THE GAS PIPE ON THE ROOF PER DETAIL 5/PT00. WOOD BLOCKING IS NOT AN ACCEPTABLE METHOD OF SUPPORTING THE GAS PIPE.
- PROVIDE ACCESSIBLE 1/2"-SIZED GAS VALVE, DRIFT LEG, AND UNION AT GAS CONNECTION TO THE EQUIPMENT.
- REFER TO ARCHITECTURAL DRAWINGS FOR PAINTING OF INTERIOR AND EXTERIOR EXPOSED GAS PIPE.
- PROVIDE DOMESTIC WATER ROUGH-INS FOR THE CHEMICAL DISPENSER FAUCET (HB-1) AT 52" AFF. SEE ARCHITECTURAL ELEVATION FOR ADDITIONAL INFORMATION.
- PROVIDE DOMESTIC WATER ROUGH-INS FOR THE VICTORY WASH DISPENSER FAUCET (HB-2) AT 57" AFF. SEE ARCHITECTURAL ELEVATION FOR ADDITIONAL INFORMATION.
- PROVIDE RESTROOM HAND SINK WALL CARRIER IN WALL PER PLUMBING SCHEDULE. INSTALL THERMOSTATIC MIXING VALVE FURNISHED WITH HAND SINK FAUCET SECURED TO WALL BELOW HAND SINK. ALL HAND SINK PIPING AND ACCESSORIES SHALL BE FULLY CONTAINED DIRECTLY BELOW HAND SINK.
- PROVIDE KITCHEN EQUIPMENT GAS SHUTOFF 6" BELOW THE CEILING PER DETAIL 4/PT00.
- CONNECT CHEMICAL DISPENSER TO HB-1. CHEMICAL DISPENSER HAS AN INTEGRAL AIR GAP AS IS SHOWN IN DETAIL 12/PT00.
- PROVIDE ASSE 1016/1070 POINT-OF-USE THERMOSTATIC MIXING VALVE, WATTS LFUSG-B, ON WATER SUPPLY TO KITCHEN HAND SINKS. PROVIDE ANGLE STOP BELOW SINK. FASTEN MIXING VALVE TO WALL AND MAKE FIRM CONNECTION FROM ANGLE STOP TO MIXING VALVE AND FROM MIXING VALVE TO FAUCET USING BRAIDED STAINLESS STEEL HOSE. ADJUST MIXING VALVE FOR A DISCHARGE TEMPERATURE OF APPROXIMATELY 110°F.
- PROVIDE ACCESSIBLE ISOLATION VALVE IN WATER SUPPLY TO FIXTURE AS SHOWN.
- PROVIDE GAS CONNECTION TO THE RICE COOKER PER DETAIL 6/PT00.
- PROVIDE GAS ROUGH-IN TO FRYER BEHIND RICE COOKER TABLE SO THAT VALVES AND DIRT LEG ARE ACCESSIBLE ONCE FRYER IS SECURED INTO PLACE.
- PROVIDE 1/2" FILTERED WATER ROUGH-IN TO THE ICE MAKER AT 24" AFF. PROVIDE 6" LONG STAINLESS STEEL FLEXIBLE BRAIDED WASHING MACHINE WATER CONNECTOR WITH MINIMUM 0.43" ID (BRASSCRAFT 5L12-72WA-F OR EQUAL) FOR FIRM CONNECTION TO ICE MAKER.
- INSTALL RGF IM58 ICE MAKER SANITIZER FURNISHED BY TUV PER CHIPOTLE'S INSTALLATION INSTRUCTIONS.
- PROVIDE 3/4" DOMESTIC HOT AND COLD WATER ROUGH-INS FOR THE PREP SINK (SK-2) FAUCET AT 24" AFF TO ALLOW FOR THE VICTORY WASH CHEMICAL DUCK TO BE INSTALLED DIRECTLY BELOW THE PREP SINK BASIN. MAKE FIRM CONNECTION TO PREP SINK FAUCET USING 3/4" BRAIDED STAINLESS STEEL WATER HEATER CONNECTOR HOSE.
- PROVIDE 1/2" HOT WATER TO THE DISH MACHINE AT 66" AFF ABOVE LEFT SIDE OF DISH MACHINE. MAKE FIRM CONNECTION USING HOSE FURNISHED WITH DISH MACHINE. PROVIDE WATER HAMMER ARRESTOR ON HOT WATER LINE.
- PROVIDE ROOF HYDRANT (RH-1) WITH BOTTOM OF NOZZLE INSTALLED 24" ABOVE THE BOTTOM OF ROOF DECK. PROVIDE ACCESSIBLE ISOLATION VALVE IN WATER SUPPLY TO ROOF HYDRANT. SUPPORT ROOF HYDRANT PER THE MANUFACTURER'S INSTALLATION INSTRUCTIONS.
- PROVIDE FILTERED DOMESTIC WATER ROUGH-IN FOR THE SPEED RILL POT FILLER FAUCET (PF-1) AT 42" AFF. SEE ARCHITECTURAL ELEVATION FOR DETAIL.
- PROVIDE WATER SERVICE ENTRY PER DETAIL 16/PT00.
- INSTALL RGF IM58 ICE MAKER SANITIZER FURNISHED BY TUV PER CHIPOTLE'S INSTALLATION INSTRUCTIONS. LOCATE IM58 BELOW UTENSIL COUNTER IN A LOCATION THAT DOES NOT INTERFERE WITH THE UTENSIL COUNTER.
- PENETRATIONS THROUGH SHEAR WALL SHALL BE LIMITED TO 10" DIAMETER (OR A GROUP OF PENETRATIONS ALL CONTAINED WITHIN 10" DIAMETER). IF LARGER PENETRATIONS OR GROUPS OF PENETRATIONS ARE REQUIRED TO COORDINATE WITH STRUCTURAL ENGINEERS FOR APPROPRIATE BRACING. SEE STRUCTURAL DRAWINGS FOR SHEAR WALL LOCATION.
- PROVIDE ACCESSIBLE TRAP PRIMER ABOVE LAY-IN CEILING AS SHOWN. INSTALL PER MANUFACTURER'S INSTALLATION INSTRUCTIONS WITH A SERVICE VALVE AT THE TRAP PRIMER INLET. PROVIDE 1/2" DISTRIBUTION PRESS TO FLOOR DRAIN TRAP PRIMER CONNECTIONS AS SHOWN. HORIZONTAL DISTRIBUTION PIPING SHALL HAVE CONTINUOUS SLOPE TO THE FLOOR DRAINS.
- REPLACE STOCK WATER CLOSET HANDLE WITH UNIVERSAL CABLE-OPERATED HANDLE (FLUSHMATE AP3020S3 OR AP300504 - FIELD VERIFY COMPATIBILITY WITH FLUSHMATE SYSTEM IN WATER CLOSET).



CONTRACT NO. 2024-0001
 PROJECT NO. 2024-0001
 DATE: 08/01/2024
 DRAWING NO. 100-PLUMBING PLAN
 SHEET NO. 100-PLUMBING PLAN-1



CHIPOTLE MEXICAN GRILL, INC.
 PO BOX 12584
 COLUMBIA, MO 65212-2584
 TEL: 650.222.2000
 WWW.CHIPOTLE.COM

STORE NO.: 37-5566
 CITY AVENUE
 229 CITY AVENUE
 MERION STATION, PA 19066

Issue No.	Date	Description
1	12/03/2024	ISSUE FOR PERMIT
2	04/04/2025	ISSUE FOR CONSTRUCTION

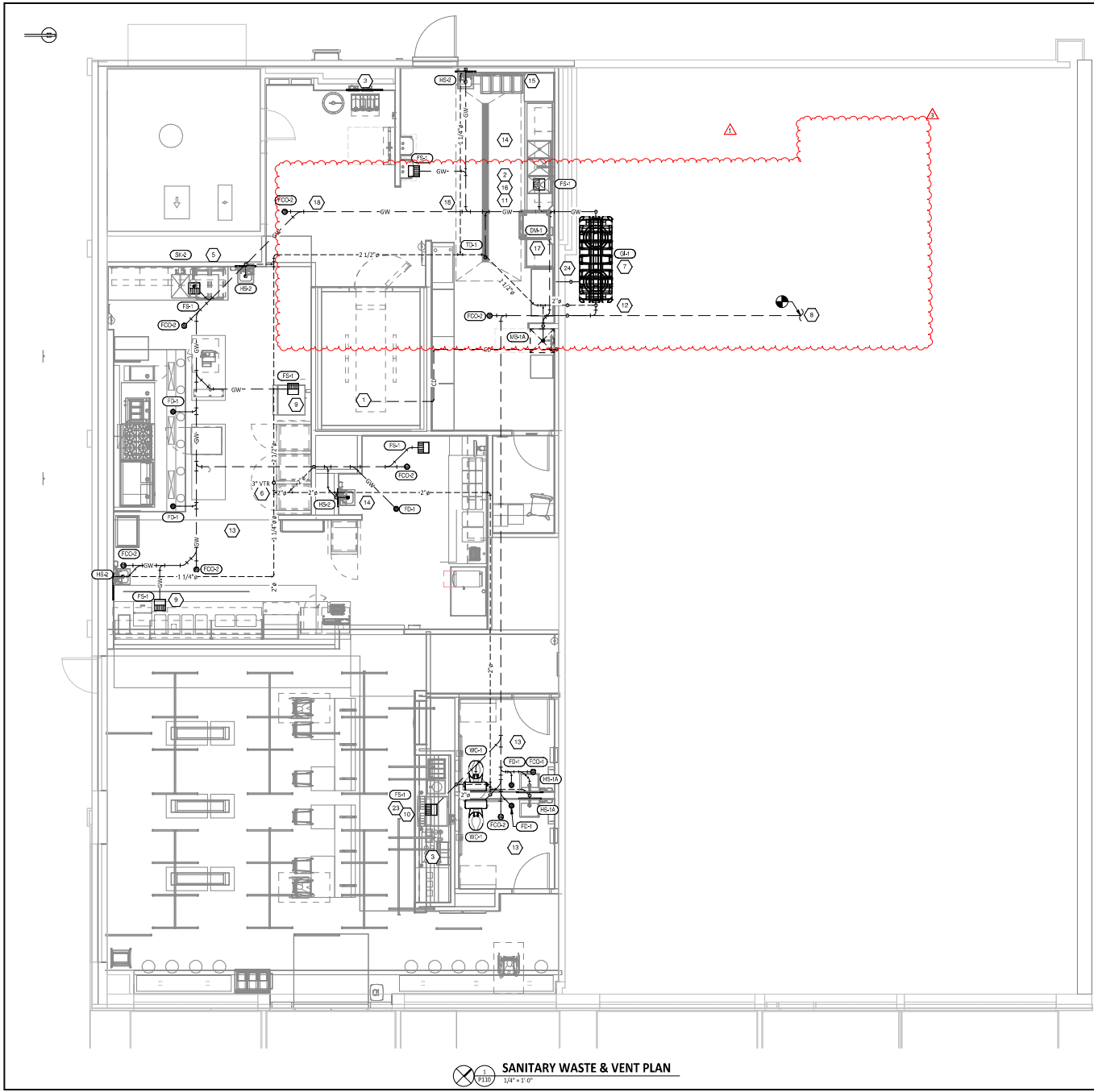
Revision	Date	Description
1	01/14/2025	PLAN REVIEW CORRECTIONS
3	03/04/2025	ISSUE FOR CONSTRUCTION

Drawn: MPC
 Checked: MPC

Project No.: 480306

PLUMBING PLAN WATER & GAS

P100



SANITARY WASTE & VENT PLAN
 1/4" = 1'-0"

PLUMBING WASTE AND VENT PLAN NOTES

- 1 PROVIDE 3/4" CONDENSATE DRAIN FROM THE WALK-IN COOLER EVAPORATOR TO THE FLOOR SINK BELOW AS SHOWN. SLOPE CONDENSATE DRAIN A MINIMUM OF 1" PER FOOT. HOLD EXPOSED CONDENSATE DRAIN IN WALK-IN COOLER AS HIGH AS POSSIBLE. CONCEAL DRAIN PIPING WITHIN FRAMED WALLS AS SHOWN. DISCHARGE THROUGH AN AIR GAP. MAKE FINAL CONNECTION TO EVAPORATOR INSIDE WALK-IN COOLER USING A UNION. CONDENSATE DRAIN SHOULD PENETRATE WALL AT POINT OF DISCHARGE AT 8" AFF.
- 2 PROVIDE DRAIN CONNECTIONS TO THE THREE COMPARTMENT SINK PER DETAIL 9/7700.
- 3 COORDINATE ROUTING OF SODA BUNDLES WITH COCA-COLA TECHNICIAN FROM BAG-IN-BOX AREA TO EACH SODA FOUNTAIN. OTHER THAN WITHIN THE WALLS DOWN TO THE DRYER BOX THE SODA BUNDLE SHALL BE ROUTED OVERHEAD WITHOUT CONDUIT. COORDINATE SUPPORT AND ROUTING OF THE SODA LINE BUNDLES WITH COCA-COLA TECHNICIAN DURING ROUGH-IN AND PROVIDE NECESSARY SUPPORTS. SEE ARCHITECTURAL DRAWINGS FOR SODA BUNDLE TERMINATION LOCATION AND PROVIDE TERMINATION PER DETAIL 12/7700.
- 4 NOT USED.
- 5 PROVIDE DRAIN LINES FROM THE FOOD PREP SINK TO THE FLOOR SINK. PROVIDE AN AIR GAP AT THE DISCHARGE TO THE FLOOR SINK.
- 6 PROVIDE 2" SINK THROUGH THE ROOF PER DETAIL 3/7700.
- 7 PROVIDE GREASE INTERCEPTOR GI-1 WITH SCHER MOORE P-93 PUMPOUT PORT IN THE BASEMENT OF THE ADJACENT UNIT AS SCHEDULED. INSTALL PER MANUFACTURERS RECOMMENDATIONS AND REQUIREMENTS. PROVIDE 6" CONCRETE HOUSEKEEPING PAD. COORDINATE FINAL LOCATION IN FIELD WITH OWNER/ARCHITECT/LANDLORD PRIOR TO INSTALLATION.
- 8 CONNECT NEW 4" SANITARY PIPE TO EXISTING SANITARY PIPE BELOW BASEMENT SLAB AND EXTEND AS INDICATED ON PLANS. MODIFY EXISTING SANITARY PIPING AS REQUIRED TO MAKE CONNECTIONS FOR A COMPLETE WORKING SYSTEM. SAWCUT EXISTING CONCRETE SLAB AS REQUIRED TO MAKE CONNECTION FOR A COMPLETE WORKING SYSTEM. PATCH AND REPAIR EXISTING SLAB AS NECESSARY IN PREPARATION FOR NEW FLOORING. NOTIFY ENGINEER IF ANY DISCREPANCIES.
- 9 PROVIDE 2" VALVED DRAIN FROM HOT FOOD TABLE TO THE FLOOR SINK. DRAIN THROUGH AN AIR GAP.
- 10 PROVIDE INSULATED COPPER DRAIN LINES FROM THE TEA TRAY DRAIN AND THE SODA MACHINE DRAIN TO THE FLOOR SINK. DRAIN THROUGH AN AIR GAP. HOLD TEA TRAY DRAIN AS HIGH AS POSSIBLE AND SECURE TO STRUCTURE BELOW THE TRENCH COUNTER.
- 11 TRIM TRENCH DRAIN ENDS PER THE MANUFACTURER'S INSTALLATION INSTRUCTIONS PRIOR TO INSTALLATION SO THAT GRATE FITS WITHOUT GAPS. INSTALL TRENCH DRAIN WITH SLIGHT POSITIVE SLOPE TOWARD THE DRAIN CONNECTION TO AVOID STANDING WATER IN TRENCH DRAIN.
- 12 PROVIDE 2" VENT TO GREASE INTERCEPTOR GI-1 LOCATED IN THE BASEMENT OF THE ADJACENT UNIT. DO NOT PROVIDE WALL CLEANOUTS ON TILE OR PUBLICLY VISIBLE WALLS. IF A WALL CLEANOUT IS REQUIRED ON THESE SURFACE COORDINATE THE EXACT LOCATION WITH CHIPOTLE'S CONSTRUCTION MANAGER.
- 14 PROVIDE INDIRECT WASTE AND CONDENSATE DRAINS FROM FIXTURES OTHER THAN KITCHEN SINKS CONCEALED IN THE WALLS AS SHOWN IN DETAIL 9/7700.
- 15 PROVIDE DRAIN FROM WATER FILTER BFP TO FLOOR SINK CONCEALED IN THE WALL AS SHOWN IN DETAIL 9/7700.
- 16 PROVIDE TRENCH DRAIN AS SHOWN IN DETAIL 15/7700.
- 17 INSTALL DRAIN HOSE FURNISHED WITH DISH MACHINE FROM DISH MACHINE OUTLET TO FLOOR SINK. HOLD DRAIN HOSE TIGHT TO WALL AND SECURE TO 3/4" ODP SINK DRAIN TO MAINTAIN AN AIR GAP AT THE FLOOR SINK.
- 18 PROVIDE CONDENSATE TRAP ON RTU PUR DETAIL 13/7700.
- 19 NOT USED.
- 20 NOT USED.
- 21 NOT USED.
- 22 NOT USED.
- 23 PROVIDE PVC DRAIN PIPES FROM THE ICE MACHINE TO THE FLOOR SINK PER THE MANUFACTURER'S INSTALLATION INSTRUCTIONS. PROVIDE A CODE-APPROVED AIR GAP AT THE DISCHARGE TO THE FLOOR SINK. **SECURE ICE MAKER DRAIN PIPES TO THE BOTTOM OF THE ICE MAKER.**
- 24 COORDINATE FINAL LOCATION OF PUMPOUT PORT IN FIELD WITH OWNER/ARCHITECT/LANDLORD PRIOR TO INSTALLATION.

PLUMBING FIXTURE WASTE CONNECTIONS

TAG	DESCRIPTION	CONNECTION SIZE - WASTE	DFU	COUNT	TOTAL DFU
DM-1	DISH SANITIZING MACHINE (PUMPED OUTLET)	3/8"	7	1	7
FCO-1	FLOOR CLEANOUT (3")	3"	0	1	0
FCO-2	FLOOR CLEANOUT (4")	4"	0	7	0
FD-1	FLOOR DRAIN	2"	2	5	10
FS-1	FLOOR SINK	3"	5	7	35
GI-1	GREASE INTERCEPTOR	4"	0	1	0
HS-1A	RESTROOM HAND SINK	2"	1	2	2
HS-2	KITCHEN HAND SINK	2"	1	4	4
MS-1A	MOP BASIN	3"	2	1	2
SK-1	THREE COMPARTMENT SINK	2"	0	1	0
SK-2	PREP SINK	2"	0	1	0
TD-1	TRENCH DRAIN	2"	2	1	2
WC-1	WATER CLOSET	3"	4	2	8
GRAND TOTAL					70



12500 W. MARSH RD
 COMMERCE, CO 80020
 TEL: 303.426.9100
 WWW.BOWMAN.COM



CHIPOTLE MEXICAN GRILL, INC.
 PO BOX 142548
 COLUMBUS, OH 43218-2548
 TELEPHONE: 614.833.2600
 SEE WWW.CHIPOTLE.COM

STORE NO.: 37-5566
 CITY AVENUE
 229 CITY AVENUE
 MERION STATION, PA 19066

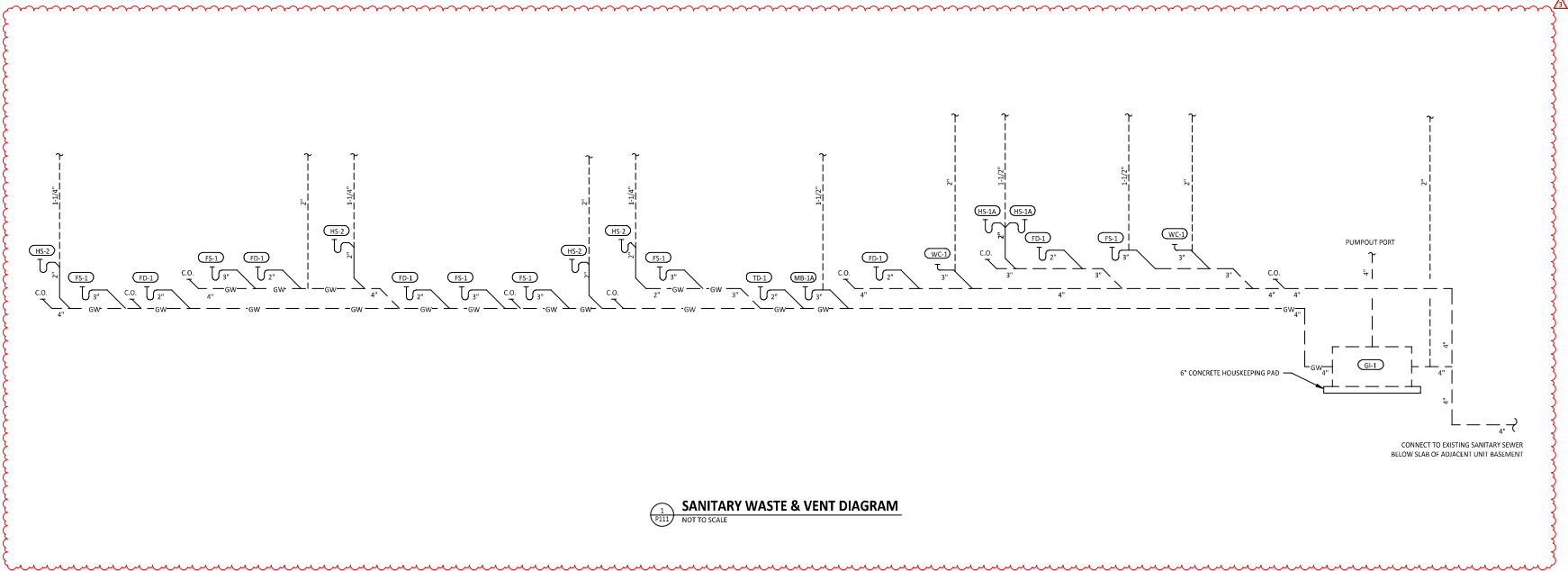
Issue Record:
 12/03/2024 ISSUE FOR PERMIT
 04/04/2025 ISSUE FOR CONSTRUCTION

Revisions:
 1 01/14/2025 PLAN REVIEW CORRECTIONS
 3 03/04/2025 ISSUE FOR CONSTRUCTION

Drawn: MPC
 Checked: MPC

Project No:
 480106

Content:
 PLUMBING PLAN
 WASTE & VENT



SANITARY WASTE & VENT DIAGRAM
NOT TO SCALE

COPYRIGHT 2024
THIS DRAWING IS AN INSTRUMENT OF SERVICE
AND AS SUCH REMAINS THE PROPERTY OF
CHIPOTLE MEXICAN GRILL, INC. PERMISSION FOR
USE OF THIS DOCUMENT IS LIMITED AND CAN BE
EXTENDED ONLY BY WRITTEN AGREEMENT WITH
CHIPOTLE MEXICAN GRILL, INC.



STORE NO.: 37-5566
CITY AVENUE
229 CITY AVENUE
MERION STATION, PA 19066

Issue Record:

12/03/2024	ISSUE FOR PERMIT
04/04/2025	ISSUE FOR CONSTRUCTION

Revisions:

3	04/04/2025	ISSUE FOR CONSTRUCTION

Drawn: MPC
Checked: MPC

Project No:
480106

Contract:
PLUMBING WASTE & VENT DIAGRAMS

PLUMBING FIXTURE SCHEDULE

TAG	DESCRIPTION	FURNISHED BY	INSTALLED BY	BASIS FOR DESIGN		REMARKS	COUNT	CONNECTION SIZE			WATER SUPPLY FIXTURE UNITS			DRAINAGE UNITS
				MANUFACTURER	MODEL			CW	HW	WASTE	CW	HW	TOTAL	
BFP-1	RPZ BACKFLOW PREVENTER	GC	GC	CONBRACO	4ALF-203-72F	LEAD FREE REDUCED PRESSURE PRINCIPLE BACKFLOW PREVENTER WITH AUTOMATIC DIFFERENTIAL RELIEF VALVE	1	1/2"			0	0	0	
BFP-2	RPZ BACKFLOW PREVENTER	GC	GC	CONBRACO	4ALF-207	LEAD FREE REDUCED PRESSURE PRINCIPLE BACKFLOW PREVENTER WITH AUTOMATIC DIFFERENTIAL RELIEF VALVE AND AIR GAP FITTING	1	1 1/2"			0	0	0	
DM-1	DISH SANITIZING MACHINE (PUMPED OUTLET)	KES	GC	SEE ARCH	--	CHEMICAL SANITIZING DISH MACHINE WITH INTEGRAL ELECTRIC BOOSTER HEATER AND PUMPED OUTLET	1	0"	1/2"	3/8"	0	3	3	7
ET-1	EXPANSION TANK	GC	GC	AMTROL	5T-5	2 GALLON CAPACITY	1	3/4"			0	0	0	
FB-1	GAS FRYER	KES	GC	SEE ARCH	--		1							
FCO-1	FLOOR CLEANOUT (3")	GC	GC	SIOUX CHEF	852-3PWR	ON-GRADE ADJUSTABLE CLEANOUT WITH INTERNAL THREADED CLEANOUT PLUG AND ROUND NICKEL-BRONZE RING AND COVER (OR APPROVED EQUAL WITH INTERNAL THREADED CLEANOUT PLUG)	1		3"					0
FCO-2	FLOOR CLEANOUT (4")	GC	GC	SIOUX CHEF	852-4PWR	ON-GRADE ADJUSTABLE CLEANOUT WITH INTERNAL THREADED CLEANOUT PLUG AND ROUND NICKEL-BRONZE RING AND COVER (OR APPROVED EQUAL WITH INTERNAL THREADED CLEANOUT PLUG)	7		4"					0
FD-1	FLOOR DRAIN	GC	GC	SIOUX CHEF	842-2-PWR	ADJUSTABLE FLOOR DRAIN WITH PVC BODY, ROUND POLISHED METAL RING AND STRAINER, AND TRAP PRIMER PORT	5	1/2"	2"					2
FS-1	FLOOR SINK	GC	GC	SIOUX CHEF	861-3PU2	HEAVY DUTY PVC FLOOR SINK WITH ALUMINUM DOME BOTTOM STRAINER AND OPEN HALF PVC PRIMER	7		3"					5
GI-1	GREASE INTERCEPTOR	GC	GC	SCHER	GR-250	PROVIDE GR-250 GREASE INTERCEPTOR ON 6" CONCRETE HOUSING/KEEPING CURB. PROVIDE SCHER MODEL# PP3 PUMPOUT PORT. COORDINATE FINAL LOCATION IN FIELD WITH OWNER/ARCHITECT/LANDLORD PRIOR TO INSTALLATION.	1		4"					0
GR-1	GAS GRIDDLE	KES	GC	SEE ARCH	--		1							
HB-1	CHEMICAL DISPENSER HOSE BIB	KES	GC	SEE ARCH	--	COMMERCIAL QUALITY HOT & COLD MIXING WALL HYDRANT. SUPPLY ARMS SHALL HAVE INTEGRAL SHUT-OFF STOP AND CHECK VALVE. FAUCET HAS FEMALE NPT INLETS.	2	1/2"	1/2"		2.25	2.25	3	
HB-2	VEGETABLE WASH HOSE BIB	KES	GC	SEE ARCH	--	SILL FAUCET WITH NPT FEMALE INLET	1	1/2"			1.5		1.5	
HS-1A	RESTROOM HAND SINK	GC	GC	AMERICAN STANDARD	9024-001EC	ADA ACCESSIBLE, WALL MOUNTED, PORCELAIN LAVATORY. PROVIDE ZURN Z1231 (Z1233 D FOR BACK TO BACK APPLICATIONS) CONCEALED ARM CARRIER IN WALL. APPROVED ALTERNATE: KOHLER K-2084	2		2"		1.5		1.5	1
HS-1B	RESTROOM HAND SINK FAUCET	KES	GC	SEE ARCH	--	METERED FAUCET WITH 5" SPRAY ABRAZOR AND FURNISHED WITH THERMOSTATIC MIXING VALVE. ADJUST FAUCET FOR 10 SECOND RUN TIME.	2	1/2"	1/2"		1.5	1.5	2	
HS-2	KITCHEN HAND SINK	KES	GC	SEE ARCH	--	STAINLESS STEEL SINK WITH WALL MOUNTING BRACKET AND BACKLASH MOUNTED FAUCET WITH SWIVEL GOOSENECK	4	1/2"	1/2"	2"	1.5	1.5	2	1
IM-1	ICE MAKER - BSH	KES	KES	SEE ARCH	--	BACK OF HOUSE ICE MAKER WITH BIN (STANDARD CAPACITY REMOTE AIR COOLED)	1	1/2"			1		1	
IM-2	ICE MAKER - SODA	KES	KES	SEE ARCH	--	SODA MACHINE-MOUNTED ICE MACHINE (INTEGRAL AIR COOLED)	1	1/2"			1		1	
MB-1A	MOP BASIN	GC	GC	FIAT	MS82424	PROVIDE 24"x24"x10" MOLDED STONE MOP BASIN. INSTALL MOP BASIN IN A BED OF GROUT SO THERE ARE NO VOIDS BETWEEN THE MOP BASIN AND THE SLAB.	1		3"					2
MB-2B	MOP SINK FAUCET	KES	GC	SEE ARCH	--	SENSES SINK FAUCET WITH BUILT IN STOPS, LEVER HANDLES, WALL BRACE, AND NPT FEMALE INLETS	1	1/2"	1/2"		2.25	2.25	3	
PF-1	SPEED FILL FAUCET	KES	GC	SEE ARCH	--	WALL-MOUNTED POT FILLER W/ SELF-CLOSING FILLER VALVE AND NPT FEMALE INLET	1	3/8"			1.5		1.5	
RC-1	RICE COOKER	KES	GC	SEE ARCH	--		1							
RH-1	FREEZE PROOF ROOF HYDRANT	GC	GC	HOEFTNER	2331R	AUTOMATIC DRAINING, FREEZELESS ROOF HYDRANT WITH ANTI-SIPHON VACUUM BREAKER (HOEFTNER PRODUCTS 408) 847-7615	1	3/4"			1		1	
RN-1	6 BURNER RANGE	KES	GC	SEE ARCH	--		1							
SC-1	BAG-IN-BOX SODA RACK WITH CARBONATORS	SPS	SPS	SEE ARCH	--	SODA CARBONATORS SHALL HAVE AN INTEGRAL ASSE 1022-RATED CARBONATED BEVERAGE BACKFLOW PREVENTION DEVICE.	1	1/2"			1		1	
SK-1	THREE COMPARTMENT SINK	KES	GC	SEE ARCH	--	THREE-COMPARTMENT WARE-WASHING SINK FURNISHED WITH (1) PRE-RINSE UNIT WITH ADD-ON FAUCET	1	1/2"	1/2"	2"	3	3	4	0
SK-2	PREP SINK	KES	GC	SEE ARCH	--	STAINLESS STEEL PREP TABLE WITH INTEGRAL PREP SINK. FURNISHED WITH "BIG FLO" FAUCET	1	3/4"	3/4"	2"	3	3	4	0
TD-1	TRENCH DRAIN	GC	GC	ZURN	Z886 8601 8602	6" X 160" HOPE TRENCH DRAIN (SLOPED FROM 3.50" TO 4.70") WITH (2) CLOSED END CAPS, (1) 4" NO-HUB BOTTOM OUTLET, AND CLASS-A HELL-PROOF POLYETHYLENE GRATES. SEE DETAIL ON SHEET T100 FOR REDUCTION TO 2" DRAIN CONNECTION.	1	3/4"	3/4"	2"	3	3	4	2
TP-3	TRAP PRIMER (THREE-FOUR FLOOR DRAINS)	GC	GC	PRECISION PLUMBING PRODUCTS	P1-500 W/ DU-U	TRAP PRIMER WITH INTEGRAL VACUUM BREAKER AND DISTRIBUTION UNIT. CAP UNUSED	2	1/2"			0	0	0	
WC-1	WATER CLOSET	GC	GC	KOHLER	K-3519 W/ SEAT K-4666-C	WHITE HIGHLIGHT 1.0 GPF, 17-1/8" HIGH, ADA ACCESSIBLE, PRESSURE ASSIST WATER CLOSET WITH OPEN FRONT SEAT. INSTALL TRIP LEVER ON THE TANK TO THE OPEN SIDE OF THE STALL (ADD-ON TO THE MODEL # OR RIGHT HAND TRIP LEVER).	2	1/2"	3"		2		2	4
WH-1	FREEZE PROOF WALL HYDRANT	GC	GC	WOODFORD	MODEL 65	AUTOMATIC DRAINING, FREEZELESS WALL HYDRANT WITH ANTI-SIPHON VACUUM BREAKER. PROVIDE WITH STEM LONG ENOUGH TO REACH INSIDE THE THERMAL ENVELOPE OF THE BUILDING.	3	3/4"			1		1	

WATER HEATER SCHEDULE

TAG	DESCRIPTION	NATURAL GAS		ELECTRICAL		FURNISHED BY	INSTALLED BY	BASIS FOR DESIGN		REMARKS
		INPUT	CONNECTION SIZE	FLA	V/P/H			MANUFACTURER	MODEL	
DWH-1	WATER HEATER (GAS TANKLESS)	199,000 Btu/h	3/4"		120/1/60	GC	GC	NAVEN	NPE-240A2	RATED FLOW RATE: 5.6 GPM @ 67°F RISE THERMAL EFFICIENCY: 96% PROVIDE WITH LEAD FREE "PLUMB EASY VALVE SET". GC SHALL PURCHASE WATER HEATER DIRECTLY THROUGH A NAVEN AUTHORIZED DISTRIBUTOR (1-800-519-8794 OR WWW.NAVEN.COM TO LOCATE AUTHORIZED DISTRIBUTOR).
DWH-2	WATER HEATER (GAS TANKLESS)	199,000 Btu/h	3/4"		120/1/60	GC	GC	NAVEN	NPE-240A2	RATED FLOW RATE: 5.6 GPM @ 67°F RISE THERMAL EFFICIENCY: 96% PROVIDE WITH LEAD FREE "PLUMB EASY VALVE SET". GC SHALL PURCHASE WATER HEATER DIRECTLY THROUGH A NAVEN AUTHORIZED DISTRIBUTOR (1-800-519-8794 OR WWW.NAVEN.COM TO LOCATE AUTHORIZED DISTRIBUTOR).

BACKFLOW PREVENTION DEVICE SCHEDULE

FIXTURE	BACKFLOW PREVENTION DEVICE
WATER CLOSET	FLUSH VALVE FURNISHED WITH AN INTEGRAL VACUUM BREAKER
HAND WASHING SINKS (LABORATORIES)	AIR GAP
SERVICE (MOP SINKS)	FAUCET FURNISHED WITH AN INTEGRAL VACUUM BREAKER OR WATTS SERIES 7 DUAL CHECK VALVE
COMPARTMENT SINKS	FAUCET FURNISHED WITH AN INTEGRAL VACUUM BREAKER OR WATTS SERIES 7 DUAL CHECK VALVE
COMMERCIAL DISHWASHER	WATTS LFNB36C ANTISIPHON VACUUM BREAKER
ICE MACHINE	WATTS LF90 DUAL CHECK VALVE
WALL HYDRANTS - HOSE BIBS, WASH DOWN FAUCET	FURNISHED WITH AN INTEGRAL VACUUM BREAKER

- NOTES:**
- CONTRACTOR SHALL PROVIDE BACKFLOW PREVENTION DEVICES AT THE EQUIPMENT LISTED ABOVE.
 - DEVICES LISTED ARE MANUFACTURED BY WATTS REGULATOR COMPANY. CONTRACTOR MAY SUBMIT AN EQUAL FROM ANOTHER MANUFACTURER FOR REVIEW.
 - CONTRACTOR SHALL VERIFY REQUIREMENTS WITH LOCAL AUTHORITIES HAVING JURISDICTION.



12345678910
11121314151617181920
21222324252627282930
31323334353637383940
41424344454647484950

COPYRIGHT 2024
THIS DRAWING IS AN INSTRUMENT OF SERVICE
AND AS SUCH REMAINS THE PROPERTY OF
CHIPOTLE MEXICAN GRILL, INC. PERMISSION FOR
USE OF THIS DOCUMENT IS LIMITED AND CAN BE
EXTENDED ONLY BY WRITTEN AGREEMENT WITH
CHIPOTLE MEXICAN GRILL, INC.



CHIPOTLE MEXICAN GRILL, INC.
PO BOX 142584
COLUMBIA, MO 65214-2584
TELEPHONE: 616.818.2000
WEBSITE: WWW.CHIPOTLE.COM

STORE NO.: 37-5566
CITY AVENUE
229 CITY AVENUE
MERION STATION, PA 19066

Issue Record:
12/03/2024 ISSUE FOR PERMIT
04/04/2025 ISSUE FOR CONSTRUCTION

Revisions:
1 01/14/2025 PLAN REVIEW CORRECTIONS
3 03/04/2025 ISSUE FOR CONSTRUCTION

Drawn: MPC
Checked: MPC

Project No:
480106

Contract:
PLUMBING SCHEDULES

P600

LIGHTING CONTROL PANEL SCHEDULE: LCP

RELAY	PANEL	CIRCUIT	AREA SERVED	CONTROL	TIME ON	TIME OFF	DIMMER CONTROL	NOTES
R1	A	32	KITCHEN A	TIMELOCK	7:00:00 AM	12:00:00 AM	N/A	SINGLE POLE (NC)
R2	A	32	KITCHEN B	TIMELOCK	7:00:00 AM	12:00:00 AM	N/A	SINGLE POLE (NC)
R3	A	32	SPACE	TIMELOCK	7:00:00 AM	12:00:00 AM	N/A	SINGLE POLE (NC)
R4	A	32	DINING ROOM A	TIMELOCK	10:00:00 AM	12:00:00 AM	N/A	SINGLE POLE (NC)
R5	A	32	DINING ROOM B	TIMELOCK	10:00:00 AM	12:00:00 AM	N/A	SINGLE POLE (NC)
R6	A	32	DINING ROOM DL	TIMELOCK	10:00:00 AM	12:00:00 AM	N/A	SINGLE POLE (NC)
R7	A	30	RESTROOM EXHAUST FAN	TIMELOCK	7:00:00 AM	12:00:00 AM	N/A	SINGLE POLE (NC)
R8	A	30	EXT. LIGHTING/SIGNAGE	TIMELOCK	SUNSET - 1 HR.	12:00:00 AM	N/A	SINGLE POLE (NC)

LIGHTING CONTROL PANEL SCHEDULE NOTES
 A. DUPLICATE PANEL SCHEDULE AND PERMANENTLY INSTALL WITHIN THE LIGHTING CONTROL PANEL.

LIGHTING CONTROL COMPONENTS SCHEDULE

DESCRIPTION	QUANTITY	FURNISHED BY	INSTALLED BY	MANUFACTURER	MODEL	REMARKS
LCP 8-FLIGHT LIGHTING CONTROL PANEL	1	TLS	GC	ACUTY	ARP-INTENCOR NLT 8PC INVOULT REL FM DYC OPT L1	8 RELAY PANEL FOR DIMMING CONTROL WITH FLUSH MOUNT ENCLOSURE, AND DIGITAL TIME CLOCK
WALL MOUNTED OVERRIDE SWITCH	1	TLS	GC	ACUTY	HPDQMA4P	SEE LIGHTING CONTROL DIAGRAM FOR SWITCH CONFIGURATION
WALL MOUNTED DIMMER SWITCH	2	TLS	GC	COOPER	SALDEP-W	SLIDE DIMMER COMPATIBLE WITH UP TO 300W LED LIGHTING. SET AT 50% IF DINING ROOM LIGHTS FLICKER AT THIS DIMMER SETTING. THEN GC SHALL PROVIDE LUTRON DVCL-253P DIMMER AS REPLACEMENT.
WALL MOUNTED LINE VOLTAGE OCCUPANCY SENSOR	4	TLS	GC	HUBBELL	LHMTS 1-N-WH	WHITE DUAL TECHNOLOGY SINGLE RELAY WITH 1 BUTTON AND NEUTRAL WIRING

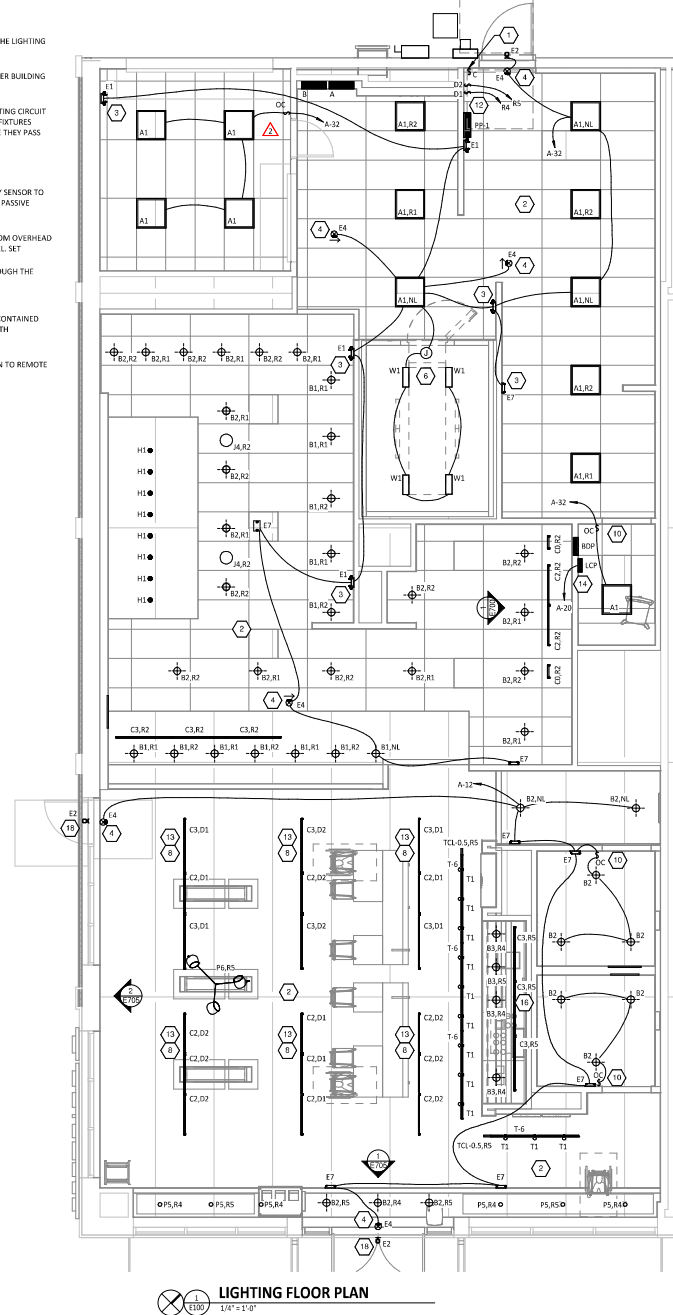
LIGHTING FIXTURE SCHEDULE

TAG	COUNT	DESCRIPTION	MOUNTING	VOLTAGE	WATTS	FURNISHED BY	INSTALLED BY	MANUFACTURER	MODEL	LAMP	REMARKS
A1	13	2x2 LED LENSED THROFFER	LAY-IN	120V	30 W	TLS	GC	NORA LIGHTING	NPOBL-422/334 W	INTEGRAL 3000K LED	COMPATIBLE WITH 0-10V DIMMING, FACTORY LOCKED TO 3000K
B1	12	RECESSED BIN CAN LIGHT	CEILING	120 V	17 W	TLS	GC	NORA LIGHTING	NHC-66344FL W/ NTM-57W/M1 TRIM	(1) 17W ECOSTORY ECO-PAR38C-17-GU24-27 K-250-LED (17" 2700K) W/ GU 24 BASE	LED TRIM FURNISHED WITH GU24 SOCKET ADAPTER
B2	30	RECESSED BIN CAN LIGHT W/ LED TRIM	CEILING	120 V	17 W	TLS	GC	NORA LIGHTING	NHC-66244FL WITH NHCRC-65130W LED TRIM	INTEGRAL 3000K LED	LED TRIM FURNISHED WITH GU24 SOCKET ADAPTER
B3	4	RECESSED BIN CAN LIGHT W/ BLACK LED TRIM	CEILING	120 V	12 W	TLS	GC	NORA LIGHTING	NHC-66244FL WITH NLCRC-651278B LED TRIM	INTEGRAL 3000K LED	BLACK LED TRIM FURNISHED WITH GU24 SOCKET ADAPTER
C0	2	LOW PROFILE LED - 1 FT	SURFACE	120 V	5 W	TLS	GC	HERA LIGHTING	EL/LED/12/W/W	INTEGRAL 3000K LED	FURNISHED WITH COVERS, CONNECTORS, AND ONE HARDWARE BOX OR CORD/PLUG PER SECTION
C2	14	LOW PROFILE LED - 3 FT	SURFACE	120 V	12 W	TLS	GC	HERA LIGHTING	EL/LED/34/W/W	INTEGRAL 3000K LED	FURNISHED WITH COVERS, CONNECTORS, AND ONE HARDWARE BOX OR CORD/PLUG PER SECTION
C3	12	LOW PROFILE LED - 4 FT	SURFACE	120 V	15 W	TLS	GC	HERA LIGHTING	EL/LED/46/W/W	INTEGRAL 3000K LED	FURNISHED WITH COVERS, CONNECTORS, AND ONE HARDWARE BOX OR CORD/PLUG PER SECTION
E1	5	EMERGENCY LIGHT - DUAL HEAD	VARIOUS	120 V	2 W	TLS	GC	EXITRONIX	LED-90	INTEGRAL LED	90 MINUTE BATTERY BACKUP
E2	3	EXTERIOR REMOTE EMERGENCY LIGHT	VARIOUS	4 V	1 W	TLS	GC	EXITRONIX	MLED1-B-WP	INTEGRAL LED	LOW VOLTAGE REMOTE EMERGENCY LIGHT POWERED BY REMOTE-CAPABLE EXT. SIGN WITH MOUNTING PLATE
E4	6	WHITE EXIT SIGN WITH EMERGENCY LIGHT STANDARD RED LETTERS	VARIOUS	120 V	2 W	TLS	GC	EXITRONIX	CLED4-WH	INTEGRAL LED	90 MINUTE BATTERY BACKUP WITH INTEGRAL EMERGENCY LIGHT, REMOTE HEAD CAPABLE
E7	8	EMERGENCY LIGHT	VARIOUS	120 V	2 W	TLS	GC	EXITRONIX	EV2	INTEGRAL LED	90 MINUTE BATTERY BACKUP
H1	8	VAPOR PROOF HOOD LIGHT	SURFACE	120 V	15 W	HS/TLS	HS	FURNISHED W/ HOOD	FURNISHED W/ HOOD	(1) TOP L16A18N1317K	INSTALL LAMP FURNISHED SEPARATELY BY LIGHTING SUPPLIER WITH BLACK LAMP SHADE, BLACK CORD, AND OAK LAMP HOLDER
J4	2	DECORATIVE PENDANT	PENDANT	120 V	9 W	TLS	GC	BARNLIGHT	BLE-C-CP110-ASH-100-S BK-300-CAW	GREEN CREATIVE SHADON/927/60/26R	
P5	6	PENDANT	PENDANT	120 V	5 W	TLS	GC	HILITE MFG	HLC-91C/181-91/20W LBL	TOP FC635-4027CCO	ADJUST CORD LENGTH FOR MOUNTING HEIGHT CALLED FOR IN ARCHITECTURAL DRAWINGS
P6	1	DECORATIVE DINING ROOM PENDANT	PENDANT	120 V	30 W	TLS	GC	BARNLIGHT	BLE-C-JGT-133-35630-3	INTEGRAL LED	HARDWIRED SET OF (3) HEADS WITH UNIVERSAL CANOPY AND STANDARD BLACK CABLES
T1	12	TRACK HEAD	TRACK	120 V	10 W	TLS	GC	JUND	R6055_30K 90CRI PDIM WFL_BL	INTEGRAL LED	BLACK CYLINDER TRACK HEAD W/ UNIVERSAL 120V TRAC ADAPTER AND WIDE FLOOD BEAM
T6	4	TRACK (6 FT)	SURFACE	120 V	0 W	TLS	GC	JUND	T6FF BL	N/A	SINGLE CIRCUIT, BLACK FINISH. FURNISH WITH CONNECTORS TO ACHIEVE ARRANGEMENT SHOWN ON PLANS. TRIM AS REQUIRED FOR LENGTHS SHOWN.
TCL-0.5	2	TRACK CURRENT LIMITER (ICW)	SURFACE	120 V	0 W	TLS	GC	JUND	TCLPM1.1 BL W/ TCLCB CSA BLACK	N/A	BLACK CURRENT LIMITING END FEED WITH CIRCUIT BREAKER
W1	4	WIC LED LIGHT	SURFACE	120 V	29 W	WCS	GC	FURNISHED W/ WIC	FURNISHED W/ WIC	INTEGRAL LED	WET RATED COOLER FIXTURE

LIGHTING FIXTURE SCHEDULE NOTES
 A. SEE THE ARCHITECTURAL REFLECTED CEILING PLAN FOR EXACT LIGHT LOCATIONS.
 B. SEE THE ARCHITECTURAL LIGHTING DETAILS FOR FIXTURE CONSTRUCTION DETAILS.

ELECTRICAL LIGHTING PLAN NOTES

1. INSTALL WALL MOUNTED LIGHTING OVERRIDE SWITCH AND CONNECT TO LCP AS SHOWN IN DETAIL E1710
2. FOR UNCIRCUITED LIGHT FIXTURES, CONNECT TO RELAY CIRCUIT INDICATED NEXT TO THE FIXTURE TAG THROUGH THE LIGHTING CONTROL PANEL (LCP) UNLESS NOTED OTHERWISE.
3. WALL MOUNT THE EMERGENCY LIGHT FIXTURE AT 6" BELOW THE CEILING UNLESS NOTED OTHERWISE
4. VERIFY MOUNTING HEIGHT OF EXIT SIGN PRIOR TO ROUGH-IN. EXIT SIGN MUST BE VISIBLE FROM AREA SERVED AFTER BUILDING SYSTEMS HAVE BEEN INSTALLED. SEE ARCHITECTURAL ELEVATIONS FOR FURTHER INFORMATION
5. NOT USED.
6. INSTALL LIGHT FIXTURES FURNISHED WITH THE WALK-IN COOLER. PROVIDE UNSWITCHED CONDUCTOR FROM LIGHTING CIRCUIT TO WALK-IN COOLER LIGHTING HOOD AND FROM HOOD TO LIGHT FIXTURES AS SHOWN. CONDUIT BETWEEN LIGHT FIXTURES SHALL BE ROUTED ON THE INTERIOR OF THE WALK-IN COOLER. SEAL INTERIOR AND EXTERIOR OF CONDUITS WHERE THEY PASS THROUGH THE WALK-IN COOLER ENVELOPE PER THE NEC.
7. NOT USED.
8. PROVIDE UNISTRUT AS SHOWN ON THE ARCHITECTURAL RCP PER THE ARCHITECTURAL UNISTRUT DETAIL, TYPICAL.
9. NOT USED.
10. INSTALL WALL MOUNTED OCCUPANCY SENSOR FURNISHED BY LIGHTING SUPPLIER AT 42" AFF. ADJUST OCCUPANCY SENSOR TO PROVIDE AUTOMATIC ON/AUTOMATIC OFF OPERATION WITH A FIXED TIMER OF 30 MINUTES AND WITH BOTH THE PASSIVE INFRARED AND ULTRASONIC SENSORS ENABLED.
11. NOT USED.
12. INSTALL WALL MOUNTED DIMMERS ABOVE PANELBOARDS 8" ABOVE LAY-IN CEILING FOR CONTROL OF DINING ROOM OVERHEAD STRIP LED AND PENDANT LIGHTS. CONNECT DIMMERS TO RELAYS SHOWN THROUGH THE LIGHTING CONTROL PANEL. SET DIMMERS AT 50%.
13. CONNECT DINING ROOM (RELAY CIRCUITS RA AND RS) OVERHEAD STRIP LED LIGHTS TO THE RELAY INDICATED THROUGH THE CORRESPONDING WALL MOUNTED DIMMER INSTALLED ABOVE THE PANELBOARDS.
14. INSTALL LIGHTING CONTROL SYSTEM PER DETAIL 6/E710.
15. NOT USED.
16. PENETRATIONS THROUGH SHEAR WALL SHALL BE LIMITED TO 10" DIAMETER FOR A GROUP OF PENETRATIONS ALL CONTAINED WITHIN 10' DIAMETER. IF LARGER PENETRATIONS OR GROUPS OF PENETRATIONS ARE REQUIRED COORDINATE WITH STRUCTURAL ENGINEER FOR APPROPRIATE BRACING. SEE STRUCTURAL DRAWINGS FOR SHEAR WALL LOCATION.
17. NOT USED.
18. INSTALL LED REMOTE EMERGENCY LIGHT TO BOTTOM OF CANOPY. CONCEAL LOW VOLTAGE WIRING FROM EXT SIGN TO REMOTE EMERGENCY LIGHT.



LIGHTING FLOOR PLAN
 1/100
 1/8" = 1'-0"



CHIPOTLE MEXICAN GRILL, INC.
 RD 507 #2554
 COLUMBIA, OH 43218-2556
 TELEPHONE: 614.832.2000
 WEBSITE: WWW.CHIPOTLE.COM

STORE NO.: 37-5566
 CITY AVENUE
 229 CITY AVENUE
 MERION STATION, PA 19066

Issue Record:
 12/03/2024 ISSUE FOR PERMIT
 04/04/2025 ISSUE FOR CONSTRUCTION

Revisions:
 7 01/27/2025 HEALTH DEPT. COMMENTS

Drawn: Checked:
 P/L KP

Project No:
 480106

Contract:
ELECTRICAL LIGHTING PLAN

Issue Record:

12/03/2024	ISSUE FOR PERMIT
04/04/2025	ISSUE FOR CONSTRUCTION

Revisions:

1	01/14/2025	PLAN REVIEW CORRECTIONS
3	03/04/2025	ISSUE FOR CONSTRUCTION

Drawn: _____ Checked: _____
 PQL KP

Project No:
 480106

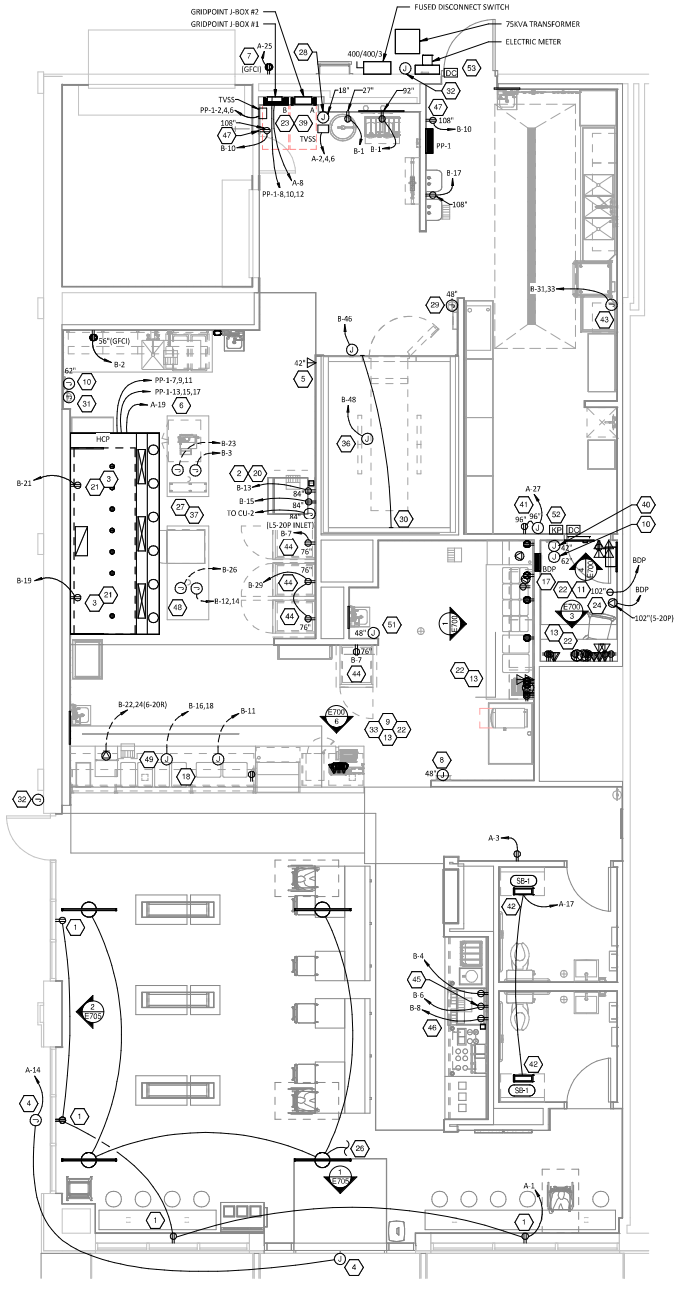
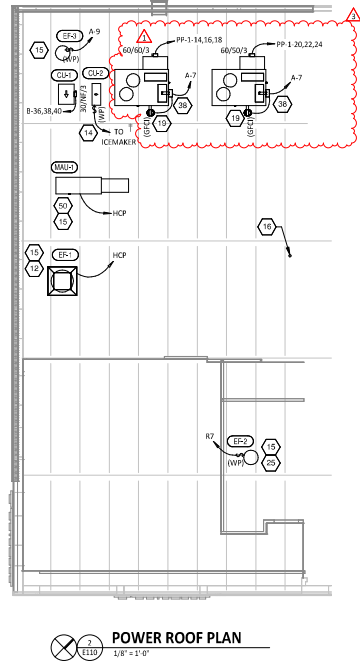
Contract:
ELECTRICAL POWER PLAN

ELECTRICAL POWER PLAN NOTES

- 1 SHOW ROOM WINDOW RECEPTACLE. COORDINATE EXACT RECEPTACLE MOUNTING HEIGHT IN THE FIELD. LOCATION SHALL BE IN THE DRYPWALL IMMEDIATELY ABOVE THE MAIN STORE FRONT WINDOW AND AS SHOWN IN THE DINING ROOM ELECTRICAL ELEVATIONS ON SHEET E210.
- 2 ICE MACHINE ELECTRICAL TIE-IN. COORDINATE EXACT LOCATION WITH EQUIPMENT INSTALLER PRIOR TO ROUGH-IN. PROVIDE 15-20P FLANGED INLET WIRED TO THE REMOTE CONDENSER. PROVIDE 48" CORDS, ONE WITH 5-20P END AND ONE WITH 15-20P END. FROM ICE MAKER TO RECEPTACLE AND FLANGED INLET.
- 3 CONNECT RECEPTACLES SERVING EQUIPMENT BELOW THE KITCHEN HOOD TO THE CIRCUITS SHOWN THROUGH THE CONTACTOR INTEGRAL TO THE HOOD CONTROL PANEL. INTEGRAL CONTACTOR SHALL BE INTERLOCKED TO HOOD FIRE PROTECTION SYSTEM SO THAT RECEPTACLES ARE DE-ENERGIZED UPON ACTIVATION OF HOOD FIRE PROTECTION SYSTEM.
- 4 JUNCTION BOX FOR EXTERIOR SIGN LIGHTING. COORDINATE EXACT LOCATION WITH CHIPOTLE'S CONSTRUCTION MANAGER AND THE SIGN INSTALLER PRIOR TO ROUGH-IN. CONNECT TO CIRCUIT SHOWN THROUGH THE EXTERIOR LIGHTING CONTACTOR PANEL AS SHOWN IN DETAIL S/E710.
- 5 PROVIDE A SINGLE GANG VERTICAL JUNCTION BOX FOR THE KITCHEN EXHAUST SUPPRESSION SYSTEM PULL STATION. PROVIDE A 1/2" CONDUIT FROM THE J-BOX TO 6" ABOVE THE CEILING AND TERMINATE WITH A CONDUIT BUSHING. COORDINATE EXACT LOCATION WITH THE KITCHEN EXHAUST SUPPRESSION SYSTEM INSTALLER AND THE FIRE MARSHALL PRIOR TO ROUGH-IN.
- 6 HOOD CONTROL PANEL AND KITCHEN EXHAUST SUPPRESSION SYSTEM CABINET SHALL BE LOCATED WITHIN THE INTEGRAL HOOD UTILITY CABINET. PROVIDE FINAL ELECTRICAL CONNECTIONS PER THE MANUFACTURER'S INSTALLATION INSTRUCTIONS NECESSARY FOR A COMPLETE AND OPERATIONAL SYSTEM.
- 7 PROVIDE A DUPLEX GFCI RECEPTACLE WITHIN USE OUTLET COVER FOR IRRIGATION CONTROLLER.
- 8 PROVIDE AN EMPTY SINGLE GANG J-BOX FOR VOLUME CONTROLS. INSTALL 16/2 SPEAKER WIRE FURNISHED BY MSS FROM THE J-BOX TO THE AMPLIFIER IN THE OFFICE WITH 3 FEET OF SLACK AT EACH END.
- 9 COORDINATE DATA/POWER RECEPTACLE MOUNTING REQUIREMENTS WITH THE CASE WORK INSTALLER PRIOR TO ROUGH-IN.
- 10 PROVIDE ROUGH-IN FOR LAUNCHPORT AS NOTED. LAUNCHPORT WILL BE FURNISHED AND INSTALLED BY CHIPOTLE WITH THE WALLSTATION AT 62" AFF. PROVIDE A 1" X 2-1/8" DEEP OCTAGON J-BOX WITH 1-1/2" EXTENSION RING AT 62" AFF FOR THE WALLSTATION INSTALLATION WITH A 1" CONDUIT WITH PULL STRING FROM THE J-BOX TO ABOVE THE OFFICE CEILING.
- 11 PROVIDE (2) EMPTY 2" CONDUITS WITH PULL STRINGS FROM THE BASE BUILDING'S TELEPHONE AND DATA SERVICE ENTRANCE LOCATIONS TO THE SPACE ABOVE THE OFFICE CEILING. TERMINATE WITH CONDUIT BUSHING.
- 12 PROVIDE A SUITABLE LENGTH OF LIQUID-TIGHT CONDUIT TO THE EXHAUST FAN E-1 TO ALLOW THE EXHAUST FAN TO HINGE COMPLETELY OPEN THROUGH THE VIBROGLAD SYSTEM IS INSTALLED.
- 13 AFTER THE FAX LINE, POS, AND OFFICE EQUIPMENT IS INSTALLED PROVIDE CHILDPROOF RECEPTACLE COVERS ON UNLUSED GFCI RECEPTACLES AT THE FAX LINE, POS, AND OFFICE.
- 14 PROVIDE ONE PHASE, ONE NEUTRAL, AND ONE GROUND CONDUCTOR FROM THE ICE MAKER TO THE REMOTE CONDENSING UNIT.
- 15 UNIT SHALL HAVE AN INTEGRAL, NON FUSED DISCONNECT SWITCH.
- 16 PROVIDE 3" CONDUIT (EMT, IMC, OR RMC) THROUGH ROOF. TERMINATE WITH WEATHERHEAD EVEN WITH TOP OF PARAPET FOR FUTURE CELL BOOSTER. SECURE CONDUIT TO STRUCTURE TO SUPPORT FUTURE ANTENNA INSTALLATION. PROVIDE 1/4" X 2" X 10" 16-HOLE GROUNDING BUSBAR (BUNO B884204 OR EQUAL) MOUNTED TO CONDUIT ABOVE ROOF FOR FUTURE CONNECTION OF LIGHTNING ARRESTORS. PROVIDE #2 CU GROUND FROM BUSBAR TO MAIN ELECTRODE GROUNDING CONDUCTOR.
- 17 INSTALL THE BYPASS DISTRIBUTION PANEL (BDP) FURNISHED BY THE TENANT. INSTALL PER THE MANUFACTURER'S INSTALLATION INSTRUCTIONS AND DETAIL 3/E710.
- 18 ROUGH-INS TO SERVE LINE AND POS EQUIPMENT ARE UNDERGROUND. COORDINATE ROUGH-IN REQUIREMENTS AND LOCATIONS WITH EQUIPMENT MANUFACTURER PRIOR TO ROUGH-IN.
- 19 ROOFTOP UNIT SHALL HAVE AN INTEGRAL UNIT MOUNTED GFCI RECEPTACLE. PROVIDE CONNECTION TO CIRCUIT SHOWN.
- 20 ICE MAKER RECEPTACLES SHALL BE CONCEALED BEHIND THE ICE MAKER. COORDINATE LOCATION WITH ACTUAL WIDTH OF ICE MAKER.
- 21 PROVIDE VERTICAL METAL DIE CAST WEATHERPROOF WHILE IN USE OUTLET COVER ON RECEPTACLES AT COOK LINE. COVER SHALL BE INTERMEDIATE WP10D10MX FOR SINGLE GANG BOXES AND WP10D30MX FOR DOUBLE GANG BOXES. NO SUBSTITUTIONS SHALL BE ACCEPTED.
- 22 LABEL BATTERY-PROTECTED RECEPTACLES "BATTERY-PROTECTED, DISCONNECT AT PANEL BDP."
- 23 LABEL MAIN DISCONNECT SWITCH AND PANEL A "WARNING: BATTERY-PROTECTED RECEPTACLES IN USE. DISCONNECT AT PANEL BDP."
- 24 PROVIDE A NEMA 5-20P FLANGED INLET (LEVITON MODEL #15378-C) AND A SINGLE NEMA 5-20R RECEPTACLE IN OFFICE FOR CONNECTION TO A CENTRAL UPS SYSTEM. CONNECT THE FLANGED INLET AND THE SINGLE RECEPTACLE TO THE TERMINAL BLOCK IN THE BDP PER THE MANUFACTURER'S INSTRUCTIONS. PROVIDE FINAL CONNECTION FROM FLANGED INLET TO THE OUTPUT OF THE UPS USING A 2' LONG 20A EXTENSION CORD. PLUG THE UPS INTO THE SINGLE RECEPTACLE.
- 25 CONNECT RESTROOM EXHAUST FAN TO CIRCUIT SHOWN THROUGH THE LIGHTING CONTROL PANEL (LCP).
- 26 INSTALL 16/2 SPEAKER WIRE FURNISHED BY MSS. INSTALL SPEAKER WIRE BETWEEN SPEAKERS IN THE DINING ROOM AS SHOWN TO THE VOLUME CONTROL IN THE KITCHEN WITH 3 FEET OF SLACK AT EACH END. SEE ARCHITECTURAL PLANS FOR SPEAKER LOCATIONS. ADJUST EACH SPEAKER 70V TAP SETTINGS TO BE 15 WATTS.
- 27 PROVIDE POWER CONNECTIONS TO ISLAND PREP TABLE PER DETAIL 2/E710. PROVIDE GFCI DUPLEX RECEPTACLES IN TWO J BOXES INTEGRAL TO PREP TABLE FOR HOT HOLDING CABINET AND GENERAL RECEPTACLE.
- 28 PROVIDE GFCI RECEPTACLE AND J-BOX AND INSTALL CO2 ALARM FURNISHED BY COZAS AS SHOWN IN DETAIL 4/E710.

ELECTRICAL POWER PLAN NOTES

- 29 PROVIDE J BOX AND INSTALL CO2 ALARM REMOTE DISPLAY UNFURNISHED BY COZAS AS SHOWN IN DETAIL 4/E710.
- 30 INSTALL WALK-IN COOLER EXTERNAL READOUT THERMOMETER REMOTE PROBE ON WALL OPPOSITE FROM DOOR AS SHOWN. ROUTE TEMPERATURE PROBE WIRE ABOVE WALK-IN COOLER CEILING PANELS. SEAL PENETRATIONS THROUGH THE CEILING PANELS, AND SECURE VERTICAL PROBE WIRE TIGHT TO WALLS. NO EXCESS PROBE WIRE SHALL BE WITHIN THE WALK-IN COOLER.
- 31 PROVIDE A J-BOX 6" BELOW THE LAY-IN CEILING WITH A 1/2" CONDUIT ROUTED TO THE HCP. PROVIDE 16 GA 2 CONDUCTOR LOW VOLTAGE WIRE FROM THE HOOD SUPPRESSION SYSTEM GAS VALVE BACK TO THE HCP WITH FINAL CONNECTION IN THE HCP BY THE FS INSTALLER. LOW VOLTAGE WIRING FROM THE J-BOX TO THE GAS VALVE SHALL BE CONCEALED WITHIN FLEXIBLE METAL CONDUIT OR LIQUIDTIGHT FLEXIBLE METAL CONDUIT.
- 32 PROVIDE 4" SQUARE J-BOX ON EXTERIOR WALL FOR MOUNTING OF EXTERIOR CAMERA. SEE ARCHITECTURAL ELEVATION FOR EXACT HEIGHT AND LOCATION. PROVIDE 3/4" CONDUIT WITH PULLSTRING FROM J-BOX TO ABOVE LAY-IN CEILING AREA IN KITCHEN. J-BOX SHALL NOT BE SURFACE MOUNTED. BASE OF CAMERA SHALL BE MOUNTED FLUSH TO EXTERIOR WALL FINISH.
- 33 PROVIDE 1" CONDUITS FROM LOW VOLTAGE J BOXES AT POS COUNTER CONCEALED WITHIN THE SERVE LINE WIRING CHASE TO THE WALL, THEN CONCEALED WITHIN THE WALL AND ABOVE THE CEILING TO ABOVE THE OFFICE CEILING.
- 34 NOT USED.
- 35 NOT USED.
- 36 SEAL INTERIOR AND EXTERIOR OF CONDUITS THAT PASS THROUGH THE WALK-IN COOLER ENVELOPE PER THE NEC.
- 37 PROVIDE ISLAND PREP TABLE FOOD WARMER RECEPTACLE WITH GROUND PIN TOWARDS THE BOTTOM OF THE RECEPTACLE.
- 38 INSTALL TRANSFORMER FURNISHED BY ULV WITH THE REME HALO AIR PURIFIER IN THE JUNCTION BOX ON THE EXTERIOR OF THE RTU PER DETAIL 6/M700. CONNECT LINE SIDE OF THE TRANSFORMER TO THE LINE SIDE OF THE RTU SERVICE RECEPTACLE CIRCUIT SO THAT REME HALO RUNS CONTINUOUSLY. CONNECT THE LOW VOLTAGE SIDE OF THE TRANSFORMER TO THE REME HALO USING THE INCLUDED BARREL PLUG.
- 39 PROVIDE (2) 10"x10"x2" JUNCTION BOXES (J-BOX #71-BOX #2) ON THE WALL ABOVE PANELBOARDS 6" BELOW THE LAY-IN CEILING AND MOUNTED ADJACENT TO SACK. PROVIDE CONDUITS AND WIRING SHOWN IN DETAIL E710. ITEMS SHALL PROVIDE GRIDPOINT 3 PHASE METER AND TRANSFORMER WITHIN J-BOX #1 AND GRIDPOINT (OM) MTR WITHIN J-BOX #2. SEE GRIDPOINT INSTALLATION SHEET FOR DETAILS.
- 40 PROVIDE HORIZONTAL SINGLE GANG J-BOX BELOW FUTURE GRIDPOINT CONTROLLER LOCATION. PROVIDE CONDUITS AND WIRING AS SHOWN IN DETAIL E710.
- 41 INSTALL WIRED DOOR BUZZER AT 96" AFF. SEE ARCHITECTURAL DOOR EQUIPMENT FOR EQUIPMENT INFORMATION. CONNECT TO CIRCUIT SHOWN THROUGH THE TRANSFORMER FURNISHED WITH THE DOOR BUZZER. PROVIDE WIRING TO A BUTTON ADJACENT TO THE SERVICE DOOR AND CONNECT PER THE MANUFACTURER'S INSTALLATION INSTRUCTIONS.
- 42 CONNECT BATHROOM SANITIZER TO CIRCUIT SHOWN SO THAT IT IS ENERGIZED AT ALL TIMES.
- 43 PROVIDE POWER AND LOW VOLTAGE CONNECTIONS TO DISH SANITIZING MACHINE PER DETAIL 7/E710. CONNECT THE DETERGENT DISPENSER TO THE DISH MACHINE USING THE INCLUDED WIRING HARNESS PER THE MANUFACTURER'S INSTALLATION INSTRUCTIONS.
- 44 PROVIDE RECEPTACLE FOR 2-DOOR AND 1-DOOR REFRIGERATORS WITH GROUND PINS TOWARDS THE BOTTOM OF THE RECEPTACLE.
- 45 PROVIDE CORD AND NEMA 5-20P PLUG FROM UTENSIL COUNTER ICE MAKER, THROUGH UTENSIL COUNTER, TO ICE MAKER RECEPTACLE.
- 46 LABEL UTENSIL COUNTER RECEPTACLES "TRACTOR BEVERAGE", "ICE MAKER/MSB", AND "SODA FOUNTAIN".
- 47 LABEL RECEPTACLE "UV INSECT TRAP".
- 48 PROVIDE POWER CONNECTIONS TO ISLAND PREP TABLE PER DETAIL 2/E710. PROVIDE GFCI DUPLEX RECEPTACLE IN J-BOX INTEGRAL TO PREP TABLE FOR UNDERCOUNTER REFRIGERATOR. PROVIDE FINAL CONNECTION TO CARVING STATION HEATER.
- 49 IF NEUTRAL CONDUCTOR IS NOT NEEDED FOR SERVE LINE HOT FOOD SERVER TERMINATE NEUTRAL IN JUNCTION BOX.
- 50 PROVIDE A TWO-CONDUCTOR LOW VOLTAGE WIRE IN 3/4" C. AND (4) #12, #12 N., #12 G. IN 1" C. FROM MAAD-1 TO THE HOOD CONTROL PANEL PER THE MANUFACTURER'S INSTALLATION INSTRUCTIONS.
- 51 PROVIDE SINGLE GANG J-BOX FOR DATA JACK AS SHOWN FOR KRONOS TIME CLOCK.
- 52 PROVIDE A RECESSED J-BOX AT 48" AFF FOR THE INSTALLATION OF THE SECURITY SYSTEM KEYPAD WITH A 3/4" CONDUIT TO ABOVE THE DROP THE CEILING IN THE OFFICE AREA. TERMINATE CONDUIT WITH A CONDUIT BUSHING.
- 53 PROVIDE A RECESSED SINGLE GANG J-BOX ABOVE DOOR AND 3" IN FROM LATCH SIDE OF DOOR FOR THE INSTALLATION OF THE SECURITY SYSTEM DOOR CONTACT WITH A 1/2" CONDUIT TO ABOVE THE LAY-IN CEILING. TERMINATE CONDUIT WITH A CONDUIT BUSHING.

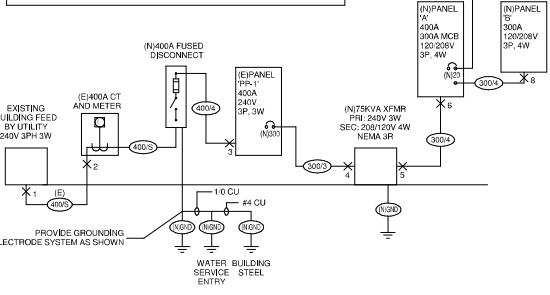


POWER ROOF PLAN
 1/8" = 1'-0"

POWER FLOOR PLAN
 1/8" = 1'-0"

VOLTS: 120/208/240V Delta												PANEL: PP-1											
PHASES: 3												MAINS: MCB											
WIRES: 4												MOUNTING: Recessed											
ENCLOSURE: Type 1												MCR RATING: 400 A											
CIR #	DESCRIPTION	C/B	#	PS	NOTES	LOAD			LOAD TYPE	C/B	#	PS	NOTES	DESCRIPTION	CIR #								
						(kVA)	(VA)	(A)															
1						14.0	0.0								2								
2	TRAVELER PANEL A		300	1		14.0	0.0							3	3								
3														4	4								
4														5	5								
5														6	6								
6														7	7								
7														8	8								
8														9	9								
9														10	10								
10														11	11								
11														12	12								
12														13	13								
13														14	14								
14														15	15								
15														16	16								
16														17	17								
17														18	18								
18														19	19								
19														20	20								
20														21	21								
21														22	22								
22														23	23								
23														24	24								
24														25	25								
25														26	26								
26														27	27								
27														28	28								
28														29	29								
29														30	30								
30														31	31								
31														32	32								
32														33	33								
33														34	34								
34														35	35								
35														36	36								
36														37	37								
37														38	38								
38														39	39								
39														40	40								
40														41	41								
41														42	42								
42														43	43								
43														44	44								
44														45	45								
45														46	46								
46														47	47								
47														48	48								
PHASE TOTAL (kVA)						28.5 kVA	28.8 kVA	28.9 kVA															
PHASE TOTAL (AMPS)						237 A	278 A	241 A															

CIRCUIT (A)	FEEDER ID	QUANTITY	CONDUCTORS		GROUND WIRE	NOTES
			SIZE (AWG)	TYPE		
AL 400/3	410	2	3	250 KCMIL #2	3	1
AL 400/4	410	2	4	250 KCMIL #2	3	1
AL 300/4	310	1	4	500 KCMIL #2	3-1/2	1
AL 300/3	310	1	3	500 KCMIL #2	3	1
CU 1/2/2	20	1	2	#12	#12	3/4
CU 1	OND					



MAIN DISTRIBUTION DIAGRAM
NOT TO SCALE

VOLTS: 208/120V Wye												PANEL: A											
PHASES: 3												MAINS: MCB											
WIRES: 4												MOUNTING: Recessed											
ENCLOSURE: Type 1												MCR RATING: 300 A											
CIR #	DESCRIPTION	C/B	#	PS	NOTES	LOAD			LOAD TYPE	C/B	#	PS	NOTES	DESCRIPTION	CIR #								
						(kVA)	(VA)	(A)															
1	RECEPTACLE OUTLET		30	1		0.6	0	0.7	0.0					1	1								
2	RECEPTACLE OUTLET		30	1		0.6	0	0.7	0.0					2	2								
3	RECEPTACLE OUTLET		30	1		0.6	0	0.7	0.0					3	3								
4	RECEPTACLE OUTLET		30	1		0.6	0	0.7	0.0					4	4								
5	RECEPTACLE OUTLET		30	1		0.6	0	0.7	0.0					5	5								
6	RECEPTACLE OUTLET		30	1		0.6	0	0.7	0.0					6	6								
7	RECEPTACLE OUTLET		30	1		0.6	0	0.7	0.0					7	7								
8	RECEPTACLE OUTLET		30	1		0.6	0	0.7	0.0					8	8								
9	RECEPTACLE OUTLET		30	1		0.6	0	0.7	0.0					9	9								
10	RECEPTACLE OUTLET		30	1		0.6	0	0.7	0.0					10	10								
11	RECEPTACLE OUTLET		30	1		0.6	0	0.7	0.0					11	11								
12	RECEPTACLE OUTLET		30	1		0.6	0	0.7	0.0					12	12								
13	RECEPTACLE OUTLET		30	1		0.6	0	0.7	0.0					13	13								
14	RECEPTACLE OUTLET		30	1		0.6	0	0.7	0.0					14	14								
15	RECEPTACLE OUTLET		30	1		0.6	0	0.7	0.0					15	15								
16	RECEPTACLE OUTLET		30	1		0.6	0	0.7	0.0					16	16								
17	RECEPTACLE OUTLET		30	1		0.6	0	0.7	0.0					17	17								
18	RECEPTACLE OUTLET		30	1		0.6	0	0.7	0.0					18	18								
19	RECEPTACLE OUTLET		30	1		0.6	0	0.7	0.0					19	19								
20	RECEPTACLE OUTLET		30	1		0.6	0	0.7	0.0					20	20								
21	RECEPTACLE OUTLET		30	1		0.6	0	0.7	0.0					21	21								
22	RECEPTACLE OUTLET		30	1		0.6	0	0.7	0.0					22	22								
23	RECEPTACLE OUTLET		30	1		0.6	0	0.7	0.0					23	23								
24	RECEPTACLE OUTLET		30	1		0.6	0	0.7	0.0					24	24								
25	RECEPTACLE OUTLET		30	1		0.6	0	0.7	0.0					25	25								
26	RECEPTACLE OUTLET		30	1		0.6	0	0.7	0.0					26	26								
27	RECEPTACLE OUTLET		30	1		0.6	0	0.7	0.0					27	27								
28	RECEPTACLE OUTLET		30	1		0.6	0	0.7	0.0					28	28								
29	RECEPTACLE OUTLET		30	1		0.6	0	0.7	0.0					29	29								
30	RECEPTACLE OUTLET		30	1		0.6	0	0.7	0.0					30	30								
31	RECEPTACLE OUTLET		30	1		0.6	0	0.7	0.0					31	31								
32	RECEPTACLE OUTLET		30	1		0.6	0	0.7	0.0					32	32								
33	RECEPTACLE OUTLET		30	1		0.6	0	0.7	0.0					33	33								
34	RECEPTACLE OUTLET		30	1		0.6	0	0.7	0.0					34	34								
35	RECEPTACLE OUTLET		30	1		0.6	0	0.7	0.0					35	35								
36	RECEPTACLE OUTLET		30	1		0.6	0	0.7	0.0					36	36								
37	RECEPTACLE OUTLET		30	1		0.6	0	0.7	0.0					37	37								
38	RECEPTACLE OUTLET		30	1		0.6	0	0.7	0.0					38	38								
39	RECEPTACLE OUTLET		30	1		0.6	0	0.7	0.0					39	39								
40	RECEPTACLE OUTLET		30	1		0.6	0	0.7	0.0					40	40								
41	RECEPTACLE OUTLET		30	1		0.6	0	0.7	0.0					41	41								
42	RECEPTACLE OUTLET		30	1		0.6	0	0.7	0.0					42	42								
43	RECEPTACLE OUTLET		30	1		0.6	0	0.7	0.0					43	43								
44	RECEPTACLE OUTLET		30	1		0.6	0	0.7	0.0					44	44								
45	RECEPTACLE OUTLET		30	1		0.6	0	0.7	0.0					45	45								
46	RECEPTACLE OUTLET		30	1		0.6	0	0.7	0.0					46	46								
47	RECEPTACLE OUTLET		30	1		0.6	0	0.7	0.0					47	47								
PHASE TOTAL (kVA)						16.0 kVA	30.7 kVA	16.3 kVA															
PHASE TOTAL (AMPS)						133 A	179 A	137 A															

TYPE	DESCRIPTION	CONNECTED LOAD	DEMAND FACTOR	ESTIMATED DEMAND	PANEL TOTALS
A	INTERIOR LIGHTING	2 kVA	125.00%	2 kVA	
B	EXTerior LIGHTING	0 kVA	125.00%	0 kVA	
C	COMFORT COOLING	0 kVA	0.00%	0 kVA	
D	COMFORT HEATING	0 kVA	0.00%	0 kVA	
E	MISC MOTOR	1 kVA	100.00%	1 kVA	
F	RE				