

Report By:

National TAB - Kansas City
1126 Swift St
N Kansas City, MO 64116



Report: CERTIFIED TAB REPORT

Function: Test, Adjust, & Balance

Date: 10/16/2024

Completed By: National TAB

PROJECT

Total Wine 1807 (Lee's Summit, MO)

1648 NW Chipman Rd.

Lee's Summit, MO 64081

Client

Set Point Mechanical, LLC

6244 W 156th St

Overland Park, KS 66223

National TAB

Project: Total Wine 1807 (Lee's Summit, MO)

Table Of Contents

Section	Page #
Certificate Page	3
Summary	4
AHU/RTU	5
FAN - Exhaust	16
Equipment List	21
Abbreviations	22
GRD Layout	23



CERTIFICATION



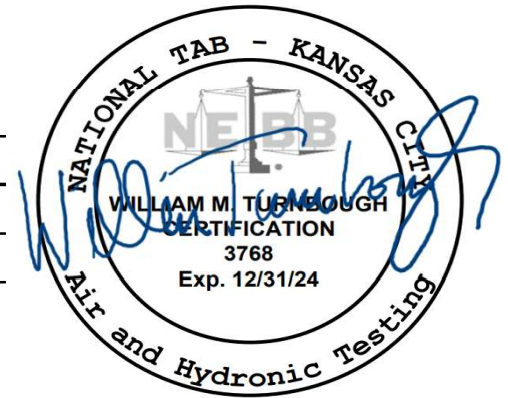
PROJECT: TOTAL WINE 1807 (LEES SUMMIT, MO)

The data presented in this report is a record of system measurements and final adjustments that have been obtained in accordance with the current edition of the NEBB Procedural Standard for Testing, Adjusting and Balancing of Environmental Systems. The measurements shown, and the information given, in this report are certified to be accurate and complete, at the time and date information was gathered. Any variances from design quantities, which exceed NEBB tolerances, are noted in the TAB report project summary.

NEBB TAB FIRM: National TAB - Kansas City
REGISTRATION NO: 3768
CERTIFIED BY: Will Turnbough
DATE: 10/16/2024

Submitted and Certified by:

NEBB TAB FIRM: National TAB - Kansas City
TAB PROFESSIONAL: Will Turnbough
REGISTRATION NO: CP-24289
CERTIFICATION EXP: 12/31/2024



Project Summary

RTU's (Roof Top Units) w/ Diffusers

Each of the RTU's were measured at their terminal devices or via traverse to establish a total flow for that unit. Each RTU was adjusted to within tolerance of the engineer's design flow. Each outlet was then adjusted to within tolerance of the design flow. Outside air was measured by reading the intake air opening with a velocity grid and multiplying by the free area. The outside air damper was adjusted until the airflow was within the design requirements. Any equipment that fell outside of that tolerance is noted throughout the report.

General Exhaust Fans w/ Grilles

The general exhaust fans were measured by reading each air device with a flow hood. The total airflow for each fan is equivalent to the sum of these readings. Fan speed was then adjusted so that the airflow was within tolerance of design. Each terminal device was balanced to within tolerance of the design volume using the installed volume dampers. Any equipment that fell outside of this tolerance is noted throughout the report.



National TAB

Project: Total Wine 1807 (Lee's Summit, MO)

System/Unit: AHU/RTU

NATIONAL TAB

INTELLIGENCE



Comfort. Under Control.
www.nationaltab.com

Asset: RTU-1

AREA:

Unit Data		
	Design	Actual
MFG	NA	LENNOX
Serial Num	-	5624A01286
Model Num	NA	LGT240H4MM1G
Configuration	-	VERTICAL
Num OA Filters 1	-	3 METAL MESH
OA Filter Size 1	-	13X23
Num PreFilter 1	-	6
PreFilter Size 1	-	24x24x2

Test Data		
	Design	Actual
SF CFM	8000	8115
RA CFM	6590	6656
OA CFM	1410	1459
RL Voltage	-	407V VFD
RL Amperage	-	8.5A VFD
OA Damper Position	-	42% HIGH/ 49% LOW

Motor Data		
	Design	Actual
Motor MFG	-	NIDEC
Frame	-	215TZ
Horsepower	10	10
Motor Rpm	-	1765
Phase	3	3
Rated Voltage	480	460
Rated Amperage	-	11.9
Service Factor	-	1.15

Performance Data		
	Design	Actual
MA Plenum SP	-	-0.61"
Fan Suction SP	-	-1.09"
Fan Discharge SP	-	0.63"
Total ESP	1.5	1.24"
Fan Total SP	-	1.72"

Completed By: Jacob Davidson on 05/06/2024

Notes:
Pulley 6 turns out at 1021 rpm
VFD AT 60Hz

Written By: Jacob Davidson on 05/06/2024



National TAB

Project: Total Wine 1807 (Lee's Summit, MO)

AHU/RTU



Comfort. Under Control.
www.nationaltab.com

Diffuser Supply (GRD)

RTU-1/

Asset							
Asset Name	Location	Type	Size	DESIGN CFM	CFM(1)	FINAL CFM	% to design
RTU-1-SGRD1	107	S3	8	140	179	142	101.4
RTU-1-SGRD2	106	S4	8	140	183	149	106.4
RTU-1-SGRD3	110	S3	8	80	45	79	98.8
RTU-1-SGRD4	106	S4	8	140	187	135	96.4
RTU-1-SGRD5	114	S1	10	400	347	376	94.0
RTU-1-SGRD6	112	S1	10	400	485	402	100.5
RTU-1-SGRD7	112	S1	10	400	491	391	97.8
RTU-1-SGRD8	112	S1	10	400	315	364	91.0
RTU-1-SGRD9	121	S1	10	400	378	402	100.5
RTU-1-SGRD10	120	S7	10	400	219	371	92.8
RTU-1-SGRD11	113	S3	8	200	301	202	101.0
Total				3100	3130	3013	97.19%

Completed By: Jacob Davidson on 10/03/2024



National TAB

Project: Total Wine 1807 (Lee's Summit, MO)

System/Unit: AHU/RTU

NATIONAL TAB

INTELLIGENCE



Comfort. Under Control.
www.nationaltab.com

Asset: RTU-2

AREA:

Unit Data		
	Design	Actual
MFG	NA	LENNOX
Serial Num	-	5624A01285
Model Num	NA	LGT240H4MM1G
Configuration	-	VERTICAL
Num OA Filters 1	-	3 METAL MESH
OA Filter Size 1	-	13x23
Num PreFilter 1	-	6
PreFilter Size 1	-	24X24X2

Test Data		
	Design	Actual
SF CFM	8000	7344
RA CFM	6590	5908
OA CFM	1410	1436
RL Voltage	-	408 VFD
RL Amperage	-	7.8 A VFD
OA Damper Position	-	40% high/ 47% low

Motor Data		
	Design	Actual
Motor MFG	-	NIDEC
Frame	-	215TZ
Horsepower	10	10
Motor Rpm	-	1765
Phase	3	3
Rated Voltage	480	460
Rated Amperage	-	11.9
Service Factor	-	1.15

Performance Data		
	Design	Actual
MA Plenum SP	-	-0.36"
Fan Suction SP	-	-0.68"
Fan Discharge SP	-	1.91"
Total ESP	1.5	1.04"
Fan Total SP	-	2.59"

Completed By: Jacob Davidson on 05/06/2024

Notes:
Pulley 3 turns out at 1176 rpm
VFD AT 60Hz

Written By: Jacob Davidson on 05/06/2024



National TAB

Project: Total Wine 1807 (Lee's Summit, MO)

System/Unit: AHU/RTU

NATIONAL TAB

INTELLIGENCE



Comfort. Under Control.
www.nationaltab.com

Asset: RTU-3

AREA:

Unit Data		
	Design	Actual
MFG	NA	LENNOX
Serial Num	-	5624A01287
Model Num	NA	LGT240H4MM1G
Configuration	-	VERTICAL
Num OA Filters 1	-	3 METAL MESH
OA Filter Size 1	-	13x23
Num PreFilter 1	-	6
PreFilter Size 1	-	24x24x2

Test Data		
	Design	Actual
SF CFM	8000	7281
RA CFM	6590	5827
OA CFM	1410	1454
RL Voltage	-	406V VFD
RL Amperage	-	7.6A VFD
OA Damper Position	-	38% HIGH / 45% LOW

Motor Data		
	Design	Actual
Motor MFG	-	NIDEC
Frame	-	215TZ
Horsepower	10	10
Motor Rpm	-	1765
Phase	3	3
Rated Voltage	480	460
Rated Amperage	-	11.9
Service Factor	-	115

Performance Data		
	Design	Actual
MA Plenum SP	-	-0.35"
Fan Suction SP	-	-0.55"
Fan Discharge SP	-	2.06"
Total ESP	1.5	2.41"
Fan Total SP	-	2.61"

Completed By: Jacob Davidson on 05/06/2024

Notes:
Pulley 3 turns out at 1174 rpm
VFD AT 60Hz

Written By: Jacob Davidson on 05/06/2024



National TAB

Project: Total Wine 1807 (Lee's Summit, MO)

System/Unit: AHU/RTU

NATIONAL TAB

INTELLIGENCE



Comfort. Under Control.
www.nationaltab.com

Asset: RTU-4

AREA:

Unit Data		
	Design	Actual
MFG	NA	LENNOX
Serial Num	-	5624B06897
Model Num	NA	LGT150H4EH1G
Configuration	-	VERTICAL
Num OA Filters 1	-	2 METAL MESH
OA Filter Size 1	-	14x22.75
Num PreFilter 1	-	4
PreFilter Size 1	-	20X25X2

Test Data		
	Design	Actual
SF CFM	5000	4839
RA CFM	4350	4205
OA CFM	650	634
RL Voltage	-	486/483/484
RL Amperage	-	2.2/2.5/2.7
OA Damper Position	-	29% HIGH / 35% LOW

Motor Data		
	Design	Actual
Motor MFG	-	EBMPAPST
Frame	-	NL
Horsepower	3.75	3.8
Motor Rpm	-	NL
Phase	3	3
Rated Voltage	480	380-480
Rated Amperage	-	4.7
Service Factor	-	1

Performance Data		
	Design	Actual
MA Plenum SP	-	-0.50"
Fan Suction SP	-	-0.85"
Fan Discharge SP	-	0.72"
Total ESP	0.5"	1.22"
Fan Total SP	-	1.57"

Completed By: Jacob Davidson on 05/01/2024

Notes:
Motor speed set at 87%

Written By: Jacob Davidson on 05/01/2024



National TAB

Project: Total Wine 1807 (Lee's Summit, MO)

AHU/RTU



Comfort. Under Control.
www.nationaltab.com

Diffuser Supply (GRD)

RTU-4/

Asset							
Asset Name	Location	Type	Size	DESIGN CFM	CFM(1)	FINAL CFM	% to design
RTU-4-SGRD1	109	S1	10	900	1001	907	100.8
RTU-4-SGRD2	109	S1	10	560	421	528	94.3
RTU-4-SGRD3	109	S1	10	900	843	847	94.1
RTU-4-SGRD4	109	S1	10	560	591	541	96.6
RTU-4-SGRD5	109	S1	10	560	513	525	93.8
RTU-4-SGRD6	109	S1	10	560	537	542	96.8
RTU-4-SGRD7	109	S1	10	560	515	531	94.8
RTU-4-SGRD8	111	S3	8	200	202	213	106.5
RTU-4-SGRD9	119	S3	8	200	261	205	102.5
Total				5000	4884	4839	96.78%

Completed By: Jacob Davidson on 10/03/2024



National TAB

Project: Total Wine 1807 (Lee's Summit, MO)

System/Unit: AHU/RTU

NATIONAL TAB

INTELLIGENCE



Comfort. Under Control.
www.nationaltab.com

Asset: RTU-5

AREA:

Unit Data		
	Design	Actual
MFG	NA	LENNOX
Serial Num	-	5624B04860
Model Num	NA	LGT092H4EH1G
Configuration	-	VERTICAL
Num OA Filters 1	-	2 METAL MESH
OA Filter Size 1	-	14X22.75
Num PreFilter 1	-	4
PreFilter Size 1	-	20X25X2

Test Data		
	Design	Actual
SF CFM	3000	3138
RA CFM	2400	2504
OA CFM	600	634
RL Voltage	-	206/207/208
RL Amperage	-	0.8/1.1/1.2
OA Damper Position	-	32% HIGH / 37% LOW

Motor Data		
	Design	Actual
Motor MFG	-	EBMPAPST
Frame	-	NL
Horsepower	3.75	3.8
Motor Rpm	-	NL
Phase	3	3
Rated Voltage	480	380-480
Rated Amperage	-	4.7
Service Factor	-	1

Performance Data		
	Design	Actual
MA Plenum SP	-	-0.20"
Fan Suction SP	-	0.49"
Fan Discharge SP	-	-0.25"
Total ESP	1.5"	0.45"
Fan Total SP	-	0.74"

Completed By: Jacob Davidson on 10/03/2024

Notes:
MOTOR SPEED SETPOINT: 55%

Written By: Jacob Davidson on 10/03/2024



National TAB

Project: Total Wine 1807 (Lee's Summit, MO)

AHU/RTU



Diffuser Supply (GRD)

RTU-5/

Asset							
Asset Name	Location	Type	Size	DESIGN CFM	CFM(1)	FINAL CFM	% to design
RTU-5-SGRD1		S5	10	250	289	261	104.4
RTU-5-SGRD2		S5	10	250	291	273	109.2
RTU-5-SGRD3		S5	10	250	304	263	105.2
RTU-5-SGRD4		S5	10	250	356	241	96.4
RTU-5-SGRD5		S5	10	250	204	267	106.8
RTU-5-SGRD6		S5	10	250	149	229	91.6
RTU-5-SGRD7		S5	10	250	256	274	109.6
RTU-5-SGRD8		S5	10	250	278	258	103.2
RTU-5-SGRD9		S5	10	250	280	254	101.6
RTU-5-SGRD10	118	S3	10	250	245	274	109.6
RTU-5-SGRD11	108	S3	10	250	267	275	110.0
RTU-5-SGRD12	108	S3	10	250	235	269	107.6
Total				3000	3154	3138	104.6%

Completed By: Jacob Davidson on 10/03/2024



National TAB

Project: Total Wine 1807 (Lee's Summit, MO)
System/Unit: AHU/RTU



Asset: RTU-6

AREA:

Unit Data		
	Design	Actual
MFG	NA	LENNOX
Serial Num	-	5623M06831
Model Num	NA	LGT036H4EB1G
Configuration	-	VERTICAL
Num OA Filters 1	-	1 METAL MESH
OA Filter Size 1	-	14X29
Num PreFilter 1	-	4
PreFilter Size 1	-	20X20X2

Motor Data		
	Design	Actual
Motor MFG	-	NA
Frame	-	NA
Horsepower	1.5	0.5
Motor Rpm	-	NA
Phase	3	1
Rated Voltage	480	460
Rated Amperage	-	2.2
Service Factor	-	1

Test Data		
	Design	Actual
SF CFM	1200	1214
RA CFM	1170	1183
OA CFM	30	31
RL Voltage	-	491/491/491
RL Amperage	-	0.8/0.8/0.9
OA Damper Position	-	11% HIGH / 17% LOW

Performance Data		
	Design	Actual
MA Plenum SP	-	-0.13"
Fan Suction SP	-	-0.21
Fan Discharge SP	-	0.23"
Total ESP	1.5"	0.36"
Fan Total SP	-	0.44"

Completed By: Jacob Davidson on 05/06/2024

Notes:
MOTOR SPEED SETPOINT: 51%

Written By: Jacob Davidson on 05/06/2024



National TAB

Project: Total Wine 1807 (Lee's Summit, MO)

AHU/RTU



Comfort. Under Control.
www.nationaltab.com

Diffuser Supply (GRD)

RTU-6/

Asset							
Asset Name	Location	Type	Size	DESIGN CFM	CFM(1)	FINAL CFM	% to design
RTU-6-SGRD1	100	S3	10	400	519	421	105.3
RTU-6-SGRD2	100	S3	10	400	369	392	98.0
RTU-6-SGRD3	100	S3	10	400	379	401	100.3
Total				1200	1267	1214	101.17%

Completed By: Jacob Davidson on 10/03/2024



National TAB

Project: Total Wine 1807 (Lee's Summit, MO)

System/Unit: AHU/RTU

NATIONAL TAB

INTELLIGENCE



Comfort. Under Control.
www.nationaltab.com

Asset: RTU-7

AREA:

Unit Data		
	Design	Actual
MFG	NA	LENNOX
Serial Num	-	55623M06361
Model Num	NA	LGT150H4EH1G
Configuration	-	VERTICAL
Num OA Filters 1	-	2 METAL MESH
OA Filter Size 1	-	14X22.75
Num PreFilter 1	-	4
PreFilter Size 1	-	20X25X2

Test Data		
	Design	Actual
SF CFM	5000	4874
RA CFM	3955	3902
OA CFM	1045	972
RL Voltage	-	493/491/492
RL Amperage	-	2.2/2.3/2.4
OA Damper Position	-	37% HIGH / 45% LOW
Brake Horse Power	-	

Motor Data		
	Design	Actual
Motor MFG	-	EBMPAPST
Frame	-	NL
Horsepower	3.75	3.8
Motor Rpm	-	NL
Phase	3	3
Rated Voltage	480	380-480
Rated Amperage	-	4.7
Service Factor	-	1

Performance Data		
	Design	Actual
MA Plenum SP	-	-0.54"
Fan Suction SP	-	-0.99"
Fan Discharge SP	-	0.89"
Total ESP	0.5"	1.43"
Fan Total SP	-	1.88"

Completed By: Jacob Davidson on 05/06/2024

Notes:
MOTOR SPEED SETPOINT: 90%

Written By: Jacob Davidson on 05/01/2024



National TAB

Project: Total Wine 1807 (Lee's Summit, MO)

System/Unit: FAN - Exhaust

NATIONAL TAB

INTELLIGENCE



Comfort. Under Control.
www.nationaltab.com

Asset: EF1

AREA:

Unit Data		
	Design	Actual
MFG	NA	COOK
Model Num	NA	100C17DH VF 100 ACEH
Serial Num	-	299PK80408- 00/0000701
Type	CRE	DOWNBLAST

Test Data		
	Design	Actual
CFM	450	424
RL Voltage	-	NA
RL Amperage	-	NA
Total ESP	-	0.65"

Motor Data		
	Design	Actual
Motor MFG	-	US MOTORS
Frame	-	48Y
Horsepower	-	1/2
Motor Rpm	-	300-1800
Phase	1	1
Voltage (rated)	120	115/208-230
Amperage (rated)	-	6.4/4.0-3.8
Service Factor	-	1

Completed By: Jacob Davidson on 05/06/2024

Notes:

MOTOR SPEED SETPOINT: 82%

Written By: Jacob Davidson on 10/03/2024



National TAB

Project: Total Wine 1807 (Lee's Summit, MO)

FAN - Exhaust



Comfort. Under Control.
www.nationaltab.com

Diffuser Ret/Exh (GRD)

EF1/

Asset								
Asset Name	Type	Size	DESIGN CFM	AK	CFM(1)	CFM(2)	FINAL CFM	% to design
EF1-EGRD1	EG2	8	150	1	173	148	146	97.3
EF1-EGRD2	EG1	8	150	1	209	179	140	93.3
EF1-EGRD3	EG2	8	150	1	156	133	138	92.0
Total			450		538	460	424	94.22%



National TAB

Project: Total Wine 1807 (Lee's Summit, MO)
System/Unit: FAN - Exhaust



Asset: EF2

AREA:

Unit Data		
	Design	Actual
MFG	NA	NA
Model Num	NA	NA
Serial Num	-	NA
Type	INLINE	INLINE

Completed By: Jacob Davidson on 10/03/2024

Notes:

FAN IS TOO HIGH UP AND IN TOO SMALL OF A SPACE FOR TECH TO REACH. UNABLE TO BALANCE FAN. UNIT IS A TRANSFER FAN AND WILL NOT IMPACT BUILDING

Written By: Jacob Davidson on 10/03/2024



National TAB

Project: Total Wine 1807 (Lee's Summit, MO)

System/Unit: FAN - Exhaust

NATIONAL TAB

INTELLIGENCE



Comfort. Under Control.
www.nationaltab.com

Asset: EF3

AREA:

Unit Data		
	Design	Actual
MFG	NA	COOK
Model Num	NA	100C17DH VF 100 ACEH
Serial Num	-	299PK80408- 00/0003601
Type	CRE	DOWNBLAST

Test Data		
	Design	Actual
CFM	500	485
RL Voltage	-	NA
RL Amperage	-	NA
Total ESP	-	0.51"

Motor Data		
	Design	Actual
Motor MFG	-	US MOTORS
Frame	-	48Y
Horsepower	0.10	1/2
Motor Rpm	-	300-1800
Phase	1	1
Voltage (rated)	120	115/208-230
Amperage (rated)	-	6.4/4.0-3.8
Service Factor	-	1

Completed By: Jacob Davidson on 05/06/2024

Notes:
MOTOR SPEED SETPOINT: 98%

Written By: Jacob Davidson on 10/03/2024



National TAB

Project: Total Wine 1807 (Lee's Summit, MO)

FAN - Exhaust



Comfort. Under Control.
www.nationaltab.com

Diffuser Ret/Exh (GRD)

EF3/

Asset								
Asset Name	Type	Size	DESIGN CFM	AK	CFM(1)	CFM(2)	FINAL CFM	% to design
EF3-EGRD1	EG1	24X24	250	1	360	405	246	98.4
EF3-EGRD2	EG1	24X24	250	1	74	83	239	95.6
Total			500		434	488	485	97%

Completed By: Jacob Davidson on 05/06/2024



National TAB

Testing, Adjusting, and Balancing Equipment



Function		Range	Minimum Accuracy	Instrument Information	Calibration Date	Date Due
AIR	AIR PRESSURE	0 in wg to 10 in wg	2% +/- 0.001 in wg	Evergreen S-PVF-1 24D-00509	6/17/2024	6/17/2025
	AIR VELOCITY INSTRUMENT	50 fpm to 3900 fpm	+/- 5 % +/- 7 fpm	Evergreen S-PVF-1 24D-00509	6/17/2024	6/17/2025
	DIRECT HOOD READING	100 cfm to 2000 cfm	+/- 5 % +/- 7 cfm	Evergreen S-PVF-1 24D-00509	6/17/2024	6/17/2025
TEMPERATURE	AIR METER	-20 F to 240 F	+/- .5 % 2 F	Cooper SRH77A S/N 100516003	9/18/2024	9/18/2025
	AIR PROBE	-20 F to 240 F	+/- .5 % 2 F	Cooper SRH77A S/N 100516003	9/18/2024	9/18/2025
	IMMERSION METER	-20 F to 240 F	+/- .5 % 2 F	Cooper SRH77A S/N 100516003	9/18/2024	9/18/2025
	IMMERSION PROBE	-20 F to 240 F	+/- .5 % 2 F	Cooper SRH77A S/N 100516003	9/18/2024	9/18/2025
	CONTACT METER	-20 F to 240 F	+/- .5 % 2 F	Cooper SRH77A S/N 100516003	9/18/2024	9/18/2025
	CONTACT PROBE	-20 F to 240 F	+/- .5 % 2 F	Cooper SRH77A S/N 100516003	9/18/2024	9/18/2025
HUMIDITY	HUMIDITY PROBE	10 % RH to 90 % RH	3% of reading	Cooper SRH77A S/N 100516003	9/18/2024	9/18/2025
ELECTRICAL	VOLTAGE MEASUREMENT	0 VAC to 600 VAC	2 % reading +/- 5 digits	Klein Tools CL800 S/N 1220C-C1	9/18/2024	9/18/2025
	AMPERAGE MEASUREMENT	0 Amperers to 100 Amperes	2 % reading +/- 5 digits	Klein Tools CL800 S/N 1220C-C1	9/18/2024	9/18/2025
ROTATION	ROTATION MEASUREMENT	60 rpm to 5000 rpm	2 % reading 2 rpm	Shimpo DT 207Lp S/N D1690029R	9/18/2024	9/18/2025

Abbreviation List

A = Area (ft ²)	S.F. = Service Factor
AHU = Air Handling Unit	SF = Supply Fan
A _k = Effective Area	SP = Static Pressure
BHP = Brake Horsepower (IP) HP	SR = Supply Register
Btu = British Thermal Unit	T = Temperature
Btu/h = Btuh = BTUH = BTU/Hour	T _{ma} = Mixed Air Temperature
CL = Center Distance (used in belt formula)	T _{oa} = Outside Air Temperature
CD = Ceiling Diffuser	T _{ra} = Return Air Temperature
CF = Correction Factor	H = Head (in wc, ft wc, psi)
CFM = Volumetric Flow: Cubic Feet Per Minute	h = Enthalpy
CO ₂ = Carbon Dioxide	HP = Horsepower
CO = Carbon Monoxide	hr = Hour
C _v = Flow Constant	K _v = Flow constant (SI)
d = Diameter (in.) IP	kW = Kilowatt = 1000 Watts
Δ = Difference or Change (Final - Initial)	LAT = Leaving Air Temperature
DB = Dry Bulb	lb = Pounds
EA = Exhaust Air	LWT = Leaving Water Temperature
EAT = Entering Air Temperature	ma = Mixed Air
EF = Exhaust Fan	MIN = Minimum
Eff = Efficiency	MAX = Maximum
EG = Exhaust Grille	N/A = Not Applicable
ESP = External Static Pressure	NA = No Access
EWT = Entering Water Temperature	NL = Not Listed
°F = Degrees Fahrenheit, °F	NPSHA = Net Positive Suction Head Available
FPB = Fan Powered Box	NS = Not Specified
FLA = Full Load Amps	OA = Outside Air
fpm = Feet per Minute (fpm)	OAT = Outside Air Temperature
ft = Foot	PD = Sheave Pitch Diameter
gal = Gallons	P.D. = Pressure Drop
GPM = Gallons Per Minute (GPM)	PF = Power Factor
h = Enthalpy (BTU/lb dry air)	SG = Supply Grille
P = Pressure	SR = Supply Register
ppm = parts per million	TP = Total Pressure
psi = Pounds Per Square Inch	T _{ra} = Return Air Temperature
psid = PSI Differential	TS = Tip Speed (fpm) IP, (m/s) SI
r = Radius (in)	TSP = Total Static Pressure
% _{ra} = % of Return Air	V = Velocity
RA = Return Air	VAV = Variable Air Volume
RAT = Return Air Temperature	VD = Volume Damper
RF = Return Fan	VFD = Variable Frequency Drive
RG = Return Grille	W = Watt
RH = Relative Humidity	WB = Wet Bulb
RPM = Revolutions Per Minute	wg = wc = water gauge = water column
RTU = Roof Top Unit	WHP = Water Horsepower (IP)
SA = Supply Air	ω = Humidity Ratio

SCARSDALE OPERATING PROCEDURE: GENERAL NOTES:

- SCARSDALE WILL CREATE AN ACCOUNT AT OUR CENTRAL STATION TO MONITOR THE FIRE ALARM.
- SCARSDALE WILL SEND THE ACCOUNT INFORMATION, ALONG WITH PROGRAMMING INFORMATION TO THE TWM CONSTRUCTION MANAGER.
- THE TWM CONSTRUCTION MANAGER WILL PASS THAT INFORMATION ONTO THE GC OR FIRE ALARM VENDOR.
- BEFORE THE FIRE ALARM VENDOR TESTS THE SYSTEM, THEY NEED TO SEND THE ZONE LIST TO SCARSDALE. REF COVER SHEET FOR CONTACT INFORMATION.
- WHEN THE FIRE ALARM VENDOR TESTS THE SYSTEM, THEY SHOULD CALL SCARSDALE TO VERIFY THAT ALL DEVICES ARE RECEIVING THE PROPER SIGNAL. SCARSDALE WILL COORDINATE WITH TWM CONSTRUCTION MANAGER OR GC IF CORRECTIONS ARE NEEDED.
- SCARSDALE'S SCOPE OF WORK IS COMPLETE ONCE EVERY DEVICE HAS BEEN CONFIRMED TO HAVE RECEIVED THE PROPER SIGNAL.
- IF REQUIRED, SCARSDALE'S CENTRAL STATION CAN SEND A REPORT OF ALL SIGNALS RECEIVED ON THE ACCOUNT TO TWM CONSTRUCTION MANAGER.
- COORDINATE SCARSDALE SYSTEM WITH THE EMS VENDOR.

- PRIOR TO SUBMITTING BID, VISIT THE JOB SITE AND BECOME FULLY ACQUAINTED WITH THE EXISTING CONDITIONS OF THE PROJECT. REVIEW THE GENERAL NOTES, SPECIFICATIONS AND OTHER DRAWINGS FOR ADDITIONAL REQUIREMENTS WHICH MAY NOT BE SPECIFICALLY CALLED OUT IN THIS PORTION OF THE CONSTRUCTION DOCUMENTS. NOTIFY ARCHITECT, ENGINEER AND/OR TWM OF CONFLICTS OR DISCREPANCIES PRIOR TO SUBMISSION OF BID.
- EXISTING CONDITIONS WERE TAKEN FROM ORIGINAL DRAWINGS AND SITE VISITS AND MAY NOT REFLECT EXACT "AS-BUILT" CONDITIONS. FIELD VERIFY EXISTING CONDITIONS PRIOR TO SUBMITTING FINAL BIDS. COORDINATE NEW WORK AND DEMOLITION WITH OTHER DISCIPLINES AND EXISTING CONDITIONS PRIOR TO CONSTRUCTION.
- COORDINATE THE INSTALLATION OF THE MECHANICAL SYSTEMS WITH OTHER TRADES TO ENSURE A NEAT AND ORDERLY INSTALLATION. INSTALL DUCTWORK AND PIPING AS TIGHT TO STRUCTURE AS POSSIBLE. COORDINATE WITH OTHER TRADES TO AVOID CONFLICTS. COORDINATE INSTALLATION OF DUCTWORK AND PIPING TO AVOID CONFLICTS WITH ELECTRICAL PANELS, LIGHTING FIXTURES, ETC. ANY MODIFICATIONS REQUIRED DUE TO LACK OF COORDINATION WILL BE THE RESPONSIBILITY OF THE CONTRACTOR AT NO EXTRA COST TO THE TENANT.
- DURING INSTALLATION OF NEW WORK, AVOID DAMAGING EXISTING SURFACES AND EQUIPMENT TO REMAIN. REPAIR DAMAGE CAUSED DURING CONSTRUCTION AT NO EXTRA COST TO THE TENANT.
- ALL NEW MECHANICAL EQUIPMENT SHOWN ON THE MECHANICAL PLANS SHALL BE PROVIDED BY THE MECHANICAL CONTRACTOR UNLESS OTHERWISE NOTED.
- NEW MECHANICAL EQUIPMENT, DUCTWORK AND PIPING ARE SHOWN AT APPROXIMATE LOCATIONS. FIELD MEASURE FINAL DUCTWORK AND PIPING LOCATIONS PRIOR TO FABRICATION AND MAKE ADJUSTMENTS AS REQUIRED TO FIT THE DUCTWORK AND PIPING WITHIN THE AVAILABLE SPACE. VERIFY THAT FINAL EQUIPMENT LOCATIONS MEET MANUFACTURER'S RECOMMENDATIONS REGARDING SERVICE CLEARANCE AND PROPER AIRFLOW CLEARANCE AROUND EQUIPMENT.
- REFER TO ARCHITECTURAL DRAWINGS FOR RELATED CONSTRUCTION DETAILS AS APPLICABLE TO THE HVAC SYSTEM. VERIFY CHASES AND PENETRATIONS SHOWN ON ARCHITECTURAL DRAWINGS THAT ARE INTENDED FOR DUCTWORK AND PIPING MEET REQUIREMENTS.
- COORDINATE LOCATION OF ROOF MOUNTED HVAC EQUIPMENT AND ROOF PENETRATIONS WITH THE ARCHITECTURAL AND STRUCTURAL DRAWINGS.
- INDOOR AIR QUALITY MEASURES: PROTECT INSIDE OF (INSTALLED AND DELIVERED) DUCTWORK AND HVAC UNITS FROM EXPOSURE TO DUST, DIRT, PAINT AND MOISTURE. REPLACE INSULATION THAT HAS GONE WET AT ANY TIME DURING CONSTRUCTION. DRYING THE INSULATION IS NOT ACCEPTABLE. SEAL ANY TEARS OR JOINTS OF INTERNAL FIBERGLASS INSULATION. REMOVE DEBRIS FROM RETURN AIR FLEUM INCLUDING DUST. AN INDEPENDENT, PROFESSIONAL DUCT CLEANING COMPANY SHALL VACUUM CLEAN ANY DUCTWORK CONNECTED TO HVAC UNITS THAT WERE OPERATED DURING THE CONSTRUCTION PERIOD AFTER NEW FILTERS ARE INSTALLED AND PRIOR TO TURNING SYSTEM OVER TO THE TENANT.
- INSTALL DUCTWORK AND PIPING PARALLEL TO BUILDING COLUMN LINES UNLESS OTHERWISE SHOWN OR NOTED.
- OVERHEAD HANGERS AND SUPPORTS FOR EQUIPMENT, DUCTWORK AND PIPING SHALL BE FASTENED TO BUILDING JOISTS OR BEAMS. DO NOT ATTACH HANGERS AND SUPPORTS TO THE ABOVE FLOOR SLAB OR ROOF.
- COORDINATE LOCATION OF EQUIPMENT SUPPORTS WITH LOCATION OF EQUIPMENT ACCESS PANELS/DOORS TO ENABLE SERVICE OF EQUIPMENT AND/OR FILTER REPLACEMENT.
- SEAL PENETRATIONS THROUGH THE BUILDING COMPONENTS IN ACCORDANCE WITH THE CONTRACT SPECIFICATIONS. FIREPROOF PENETRATIONS THROUGH FIRE RATED COMPONENTS IN ACCORDANCE WITH U.L. REQUIREMENTS.
- COORDINATE THE EXACT MOUNTING SIZE AND FRAME TYPE OF DIFFUSERS, REGISTERS AND GRILLES WITH THE SUPPLIER TO MEET THE CEILING, WALL AND DUCT INSTALLATION REQUIREMENTS.
- ADJUST LOCATION OF CEILING DIFFUSERS, REGISTERS AND GRILLES AS REQUIRED TO ACCOMMODATE FINAL CEILING GRID AND LIGHTING LOCATIONS.
- LOCATE AND INSTALL TEMPERATURE SENSORS AT LOCATIONS SHOWN ON PLANS. VERIFY EXACT LOCATIONS WITH TWM PROJECT MANAGER PRIOR TO INSTALLATION. INSTALL DEVICES AT HEIGHT INDICATED - SEE KEYNOTES. PROVIDE INSULATED BACKING FOR TEMPERATURE SENSORS MOUNTED ON EXTERIOR BUILDING WALLS. INSTALL WRINGS IN CONDUIT PROVIDED BY DIVISION 16. AT A MINIMUM, PROVIDE CONDUIT IN THE WALL FROM THE JUNCTION BOX TO 9" ABOVE THE CEILING.
- COORDINATE THE LOCATION AND ELEVATION OF WALL-MOUNTED DEVICES WITH PRESENTATION BOARDS, DISPLAY CABINETS, SHELVES OR OTHER COMPONENTS SHOWN ON THE ARCHITECTURAL DRAWINGS THAT ARE TO BE INSTALLED UNDER OTHER DIVISIONS. CONTRACTOR WILL NOT BE REIMBURSED FOR RELOCATION OF WALL-MOUNTED DEVICES CAUSED BY A LACK OF COORDINATION.
- PROVIDE A MANUAL BALANCING DAMPER IN EACH BRANCH DUCT TAKEOFF FROM MAIN SUPPLY. RETURN, OUTDOOR AND EXHAUST AIR DUCTS UNLESS NOTED OTHERWISE.
- PROVIDE A PREFABRICATED 45 DEGREE, HIGH EFFICIENCY, RECTANGULAR/ROUND BRANCH DUCT TAKEOFF FITTING WITH MANUAL BALANCING DAMPER AND LOCKING QUADRANT FOR BRANCH DUCT CONNECTIONS AND TAKE-OFFS TO INDIVIDUAL DIFFUSERS, REGISTERS AND GRILLES.
- BRANCH DUCTWORK TO AIR OUTLETS SHALL BE SAME SIZE AS OUTLET NECK SIZE UNLESS OTHERWISE NOTED.
- PROVIDE THERMAX FLEX TYPE M, FLEXMASTER TYPE 8, OR APPROVED EQUAL FLEXIBLE DUCTWORK. FLEXIBLE DUCTWORK SHALL BE LISTED UNDER UL 181 AS CLASS 1 AIR DUCT AND BE PROVIDED WITH INTEGRAL R-34 LB DENSITY FIBERGLASS INSULATION. FLEXIBLE DUCTWORK SHALL NOT EXCEED 5'-0" IN LENGTH AND SHALL BE INSTALLED AND SUPPORTED TO AVOID SHARP BENDS AND SAGGING.
- PROVIDE A NEW SET OF AIR FILTERS IN UNITS PRIOR TO TESTING, ADJUSTING AND BALANCING, AND BEFORE TURNING SYSTEMS OVER TO TENANT.
- CONTRACTOR SHALL FIELD VERIFY THAT THE EXISTING EQUIPMENT INCLUDING ACCESSORIES BEING REUSED FOR THIS PROJECT IS NOT DAMAGED AND IS IN GOOD WORKING ORDER. REPORT ANY DEFICIENCIES TO THE TENANT OR ARCHITECT. CONTRACTOR SHALL SUBMIT TO THE TENANT AND ARCHITECT A WRITTEN REPORT DESCRIBING TESTS PERFORMED TO VERIFY OPERATION AND RESULTS OF THE TESTS.
- CLEAN EXISTING EQUIPMENT AND EQUIPMENT COMPONENTS BEING REUSED FOR THIS PROJECT. PROVIDE NEW FILTERS FOR EXISTING PACKAGED ROOFTOP UNITS PRIOR TO STARTUP OF EQUIPMENT. NEW FILTERS SHALL BE COMPATIBLE WITH THE EXISTING EQUIPMENT AND EQUAL IN PERFORMANCE TO THE EXISTING FILTERS AT NEW CONDITION UNLESS OTHERWISE NOTED.
- FULLY CHARGE EXISTING REFRIGERANT SYSTEMS BEING REUSED FOR THIS PROJECT IN ACCORDANCE WITH MANUFACTURER'S WRITTEN INSTRUCTIONS. CHARGE SYSTEMS WITH NEW REFRIGERANT MATCHING EXISTING.
- EXPOSED RECTANGULAR AND ROUND SPIRAL DUCTWORK SHALL BE PRE-INSULATED WITH 1-1/2" INTERNAL INSULATION AND MOUNTED AT JOIST HEIGHT.
- EXISTING AND NEW GAS LINES TO BE COATED TO PROTECT FROM RUST, TYP.

MECHANICAL KEYNOTES:

- NEW RTU TO BE INSTALLED IN EXISTING LOCATION. REUSE EXISTING CURB. COORDINATE WORK WITH STRUCTURAL.
- OFFSET DUCT DROP AND DROP BOX DIFFUSERS AS REQUIRED TO AVOID SALES AREA HIGH-BAY LIGHTING. COORDINATE WITH ELECTRICAL CONTRACTOR.
- INSTALL THERMOSTATS FOR ALL ROOFTOP UNITS AT HATCHED AREA ON WALL IN COUNT ROOM IN VERTICAL COLUMNS FROM 30" A.F.F. TO 48" A.F.F. COORDINATE EXACT LOCATIONS WITH ARCHITECTURAL PLANS AND WITH TWM PROJECT MANAGER. LABEL ALL THERMOSTATS WITH CORRESPONDING UNIT NUMBER. THERMOSTAT FURNISHED BY TWM EMS VENDOR (ENTOUCH) AND INSTALLED BY CONTRACTOR. SEE ENTOUCH CONTROL DRAWINGS FOR ADDITIONAL INFORMATION.
- REMOVE TEMPERATURE SENSOR INSTALLED AT HEIGHT INDICATED. TEMPERATURE SENSOR FURNISHED BY TWM EMS VENDOR (ENTOUCH) AND INSTALLED BY CONTRACTOR. SEE ENTOUCH CONTROL DRAWINGS FOR ADDITIONAL INFORMATION. LABEL EACH SENSOR WITH CORRESPONDING UNIT NUMBER.
- SUPPLY AIR DUCT TEMPERATURE SENSOR (DTS) FURNISHED BY TWM VENDOR (ENTOUCH) AND INSTALLED BY MECHANICAL CONTRACTOR. SEE ENTOUCH CONTROL DRAWINGS FOR ADDITIONAL INFORMATION.
- CONTRACTOR TO PROVIDE A FACTORY CO2 SENSOR INSTALLED IN THE RETURN AIR DUCT OR MOUNTED ON THE SIDE OF THE RETURN AIR DUCT WITH ASPIRATION BOX AND CONNECT TO ASSOCIATED UNIT FOR DCV CONTROL.
- CONTRACTOR TO PROVIDE A FACTORY HUMIDITY SENSOR INSTALLED IN THE RETURN AIR DUCT AND CONNECT TO ASSOCIATED UNIT FOR DEHUMIDIFICATION CONTROL.
- PROVIDE PENN T-261-7C LINE VOLTAGE THERMOSTAT @ 48" AFF TO OPERATE FAN WHEN SPACE TEMPERATURE RISES ABOVE 75 DEGREES FAHRENHEIT IN SERVER ROOM.
- INSTALL DUCTWORK ON SALES FLOOR TIGHT TO BOTTOM OF STRUCTURE. BOTTOM OF DUCT HEIGHT SHALL BE MINIMUM 18" OF A.F.F. PRIOR TO INSTALLATION, FIELD VERIFY LOCATION WITH EXISTING CONDITIONS AND NEW WORK.
- PROVIDE REFRIGERANT PIPING SIZED AND INSULATED PER MANUFACTURER'S RECOMMENDATIONS.
- INSTALL CONDENSING UNIT CU-3 ON ROOF OF HUMIDOR AS SHOWN. PROVIDE REFRIGERANT PIPING PER MANUFACTURER'S RECOMMENDATIONS TO HUMIDOR FAN COIL UNIT, FCU-3.
- DROP BOX DIFFUSER TO BE INSTALLED WITH BOTTOM MIN. 16'-0" A.F.F. OR HIGHER IF POSSIBLE.
- NEW TRANSFER FAN HUNG FROM ABOVE WITH VIBRATION ISOLATORS. INSTALL IN LOCATION THAT IS ACCESSIBLE THRU LAY-IN DIFFUSER, OR PROVIDE ACCESS PANEL. COORDINATE LOCATION IN FIELD.
- TWM VENDOR #24 SHALL FURNISH AND INSTALL CELLAR PRO UNITS, THERMOSTATS, SENSORS, AND ALL DUCTWORK, SUPPLIES AND RETURNS FOR WINE COOLER.
- PROVIDE TRANSFER AIR GRILLE ON SALES FLOOR OF WALL AS HIGH AS POSSIBLE. PROVIDE SHEET METAL DUCT THROUGH WALL. DUCT SHALL MATCH GRILLE FACE SIZE SHOWN ON PLAN.
- DOOR TRANSFER GRILLE OF SIZE INDICATED. COORDINATE INSTALLATION WITH GC AND ARCHITECT.
- AIR CURTAIN - COORDINATE INSTALLATION WITH E.C. & G.C.
- DROP BOX SUPPLY DRUM LOUVER. REFER TO DETAIL 7/M2.1 AND DIFFUSER SCHEDULE ON SHEET M2.1. PROVIDE MANUAL BALANCING DAMPER IN SUPPLY AIR DUCT DROP SERVING DROP BOX SUPPLY DRUM LOUVER AND BALANCE DROP BOX SUPPLY AS SHOWN ON PLAN.
- OFFSET RETURN AIR DUCTWORK TIGHT TO STRUCTURE. EXTEND FULL SIZE RETURN AIR DUCTWORK MIN. 5'-0" AND TERMINATE WITH RETURN AIR OPENING ON TOP OF DUCT WITH WIRE MESH BIRD SCREEN. OPENING TO BE SIZE INDICATED.
- CONNECT DUCTWORK TO DUCT DROP WITH TRANSITION. DO NOT "HARD TAP" DUCT DROP. VERIFY SIZE AND ORIENTATION IN FIELD. NOTIFY TWM PROJECT MANAGER WITH DISCREPANCIES. (TYPICAL)
- NEW CONDENSING UNIT ON ROOF - INSTALL PER MANUFACTURER'S INSTRUCTIONS.
- NEW ROOF TOP UNIT ON NEW ROOF CURB. REFER TO RTU SCHEDULE FOR ADDITIONAL INFORMATION. DUCT SUPPLY AND RETURN DUCT DROPS DOWN FULL SIZE THRU ROOF CURB OPENING. COORDINATE WORK WITH STRUCTURAL.
- NEW EXHAUST FAN ON EXISTING ROOF CURB/PENETRATION. PROVIDE CURB ADAPTER AS REQUIRED.
- NEW RTU TO REPLACE EXISTING UNIT IN EXISTING LOCATION, PROVIDE ROOF CURB AS REQUIRED TO ACCOMMODATE NEW UNIT.
- 12x12 DUCT TO PULL EXHAUST AIR FROM SERVER ROOM, COVER OPENING WITH WIRE MESH.

NOTICE:

- POINT OF CONNECTION TO EXISTING. VERIFY EXACT SIZE AND LOCATION IF FIELD PRIOR TO START OF WORK.
- EXISTING WORK TO REMAIN SHOWN LIGHT. NEW WORK SHOWN DARK.



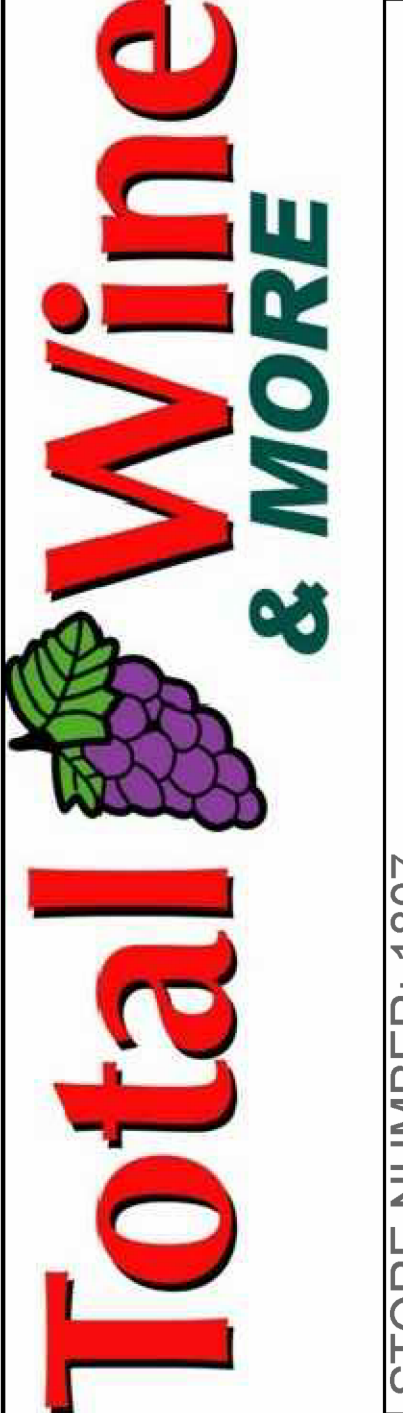
NOTICE TO CONTRACTOR:
 ALL CONTRACTORS PRIOR TO BID SUBMISSION SHALL VISIT PROPOSED WORK SITE AND FIELD VERIFY ALL EXISTING CONDITIONS. ANY CONDITION THAT DIFFERS FROM THAT SHOWN ON THESE PLANS SHALL BE REPORTED TO THE TENANT AND ARCHITECT OF RECORD SO THAT NEW AND REVISED BID DOCUMENTS MAY BE ISSUED. MODIFICATIONS TO THE SCOPE OF WORK, WHICH RESULTS FROM THE CONTRACTORS NEGLIGENCE TO VISIT THE SITE PRIOR TO SUBMITTING A BID SHALL BE THE CONTRACTOR'S SOLE RESPONSIBILITY. CONTACT AGR AND TENANT OF ANY CONFLICTS IN DOCUMENTS PRIOR TO STARTING WORK. GC IS RESPONSIBLE TO PROVIDE AND INSTALL EVERYTHING WITHIN THESE DOCUMENTS UNLESS NOTED OTHERWISE.

1 MECHANICAL FLOOR PLAN
 SCALE: 1/8" = 1'-0"



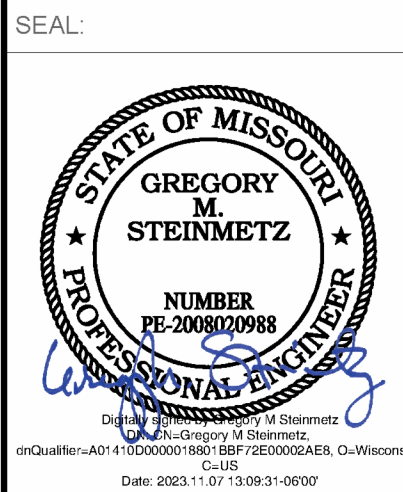
THIS DRAWING IS THE PROPERTY OF TOTAL WINE AND MORE. ANY USE OR REPRODUCTION IN WHOLE OR PART IS PROHIBITED WITHOUT THE EXPRESS WRITTEN CONSENT OF TOTAL WINE AND MORE. COPYRIGHT 2020 ALL RIGHTS RESERVED.

ADDRESS:
 STORE # 1807
 1648 W. CHIPMAN RD.
 LEE'S SUMMIT, MO 64081



ISSUE BLOCK	DATE
RRMM MANAGED	07_2023
100% SET	8/21/2023
PERMIT SET	9/5/2023
CITY COMMENTS	10/2/2023
OWNER CHANGES	11/6/2023

NO.	DESCRIPTION
1	100% SET
2	OWNER CHANGES



CHECKED BY: GMS
 DRAWN BY: BJW/SF
 PROJECT #: 0424825-004
 FILE: M1.1
 SHEET NAME

MECHANICAL FLOOR PLAN

SHEET NUMBER
M1.1
 Received

MECHANICAL KEYNOTES:

① ② ③

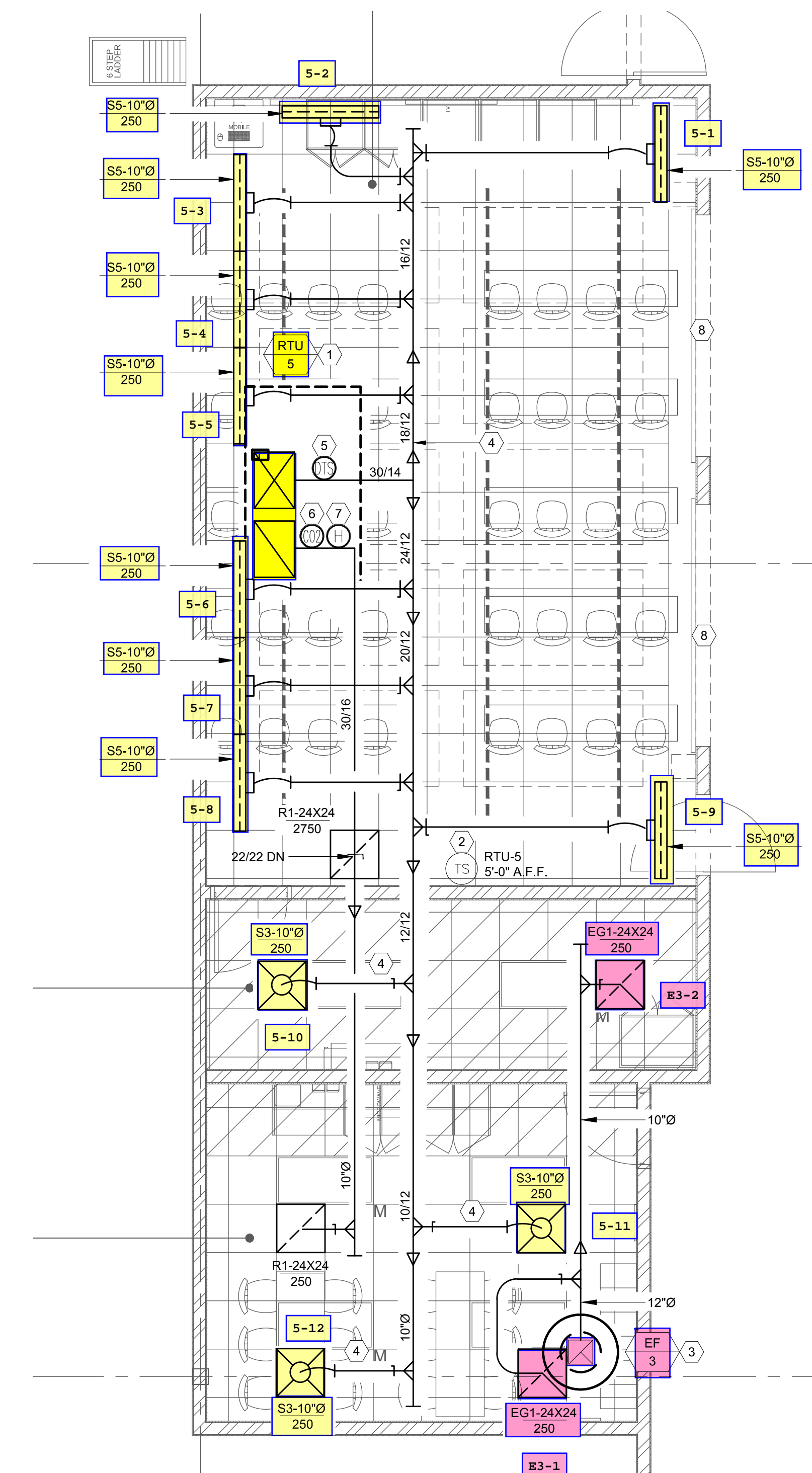
1. NEW RTU TO BE INSTALLED IN EXISTING LOCATION. SEE M1.1 AND M1.3 FOR ADDITIONAL INFORMATION.
2. REMOTE TEMPERATURE SENSOR INSTALLED AT HEIGHT INDICATED. TEMPERATURE SENSOR FURNISHED BY TWM EMS VENDOR (ENTOUCH) AND INSTALLED BY CONTRACTOR. SEE ENTOUCH CONTROL DRAWINGS FOR ADDITIONAL INFORMATION. LABEL EACH SENSOR WITH CORRESPONDING UNIT NUMBER.
3. FULL SIZE EXHAUST DUCT UP THROUGH ROOF TO NEW FAN ON ROOF. PROVIDE NEW PENETRATION & ROOF CURB.
4. DUCTWORK AND RUN-OUTS TO BE INSTALLED AS HIGH AS POSSIBLE, TIGHT TO STRUCTURE OR UP BETWEEN ROOF JOISTS, TO ALLOW FOR MAXIMUM CEILING HEIGHT. (TYPICAL)
5. SUPPLY AIR DUCT TEMPERATURE SENSOR (DTS) FURNISHED BY TWM VENDOR (ENTOUCH) AND INSTALLED BY MECHANICAL CONTRACTOR. SEE ENTOUCH CONTROL DRAWINGS FOR ADDITIONAL INFORMATION.
6. CONTRACTOR TO PROVIDE A FACTORY CO2 SENSOR INSTALLED IN THE RETURN AIR DUCT OR MOUNTED ON THE SIDE OF THE RETURN AIR DUCT WITH ASPIRATION BOX AND CONNECT TO ASSOCIATED UNIT FOR DCV CONTROL.
7. CONTRACTOR TO PROVIDE A FACTORY HUMIDITY SENSOR INSTALLED IN THE RETURN AIR DUCT AND CONNECT TO ASSOCIATED UNIT FOR DEHUMIDIFICATION CONTROL.
8. OVERHEAD DOOR TO BE INSTALLED ABOVE WINDOW OPENINGS BY OTHERS. NOTED FOR REFERENCE - AVOID ROUTING DUCTWORK ABOVE DOORS. COORDINATE WITH GENERAL CONTRACTOR.

NOTICE:

MAINTAIN MINIMUM CLEARANCE OF 10'-0" BETWEEN OUTDOOR AIR INTAKES WITH PLUMBING VENTS, EXHAUST FANS AND FLUE VENTS.

POINT OF CONNECTION TO EXISTING. VERIFY EXACT SIZE AND LOCATION IF FIELD PRIOR TO START OF WORK.

EXISTING WORK TO REMAIN SHOWN LIGHT. NEW WORK SHOWN DARK.

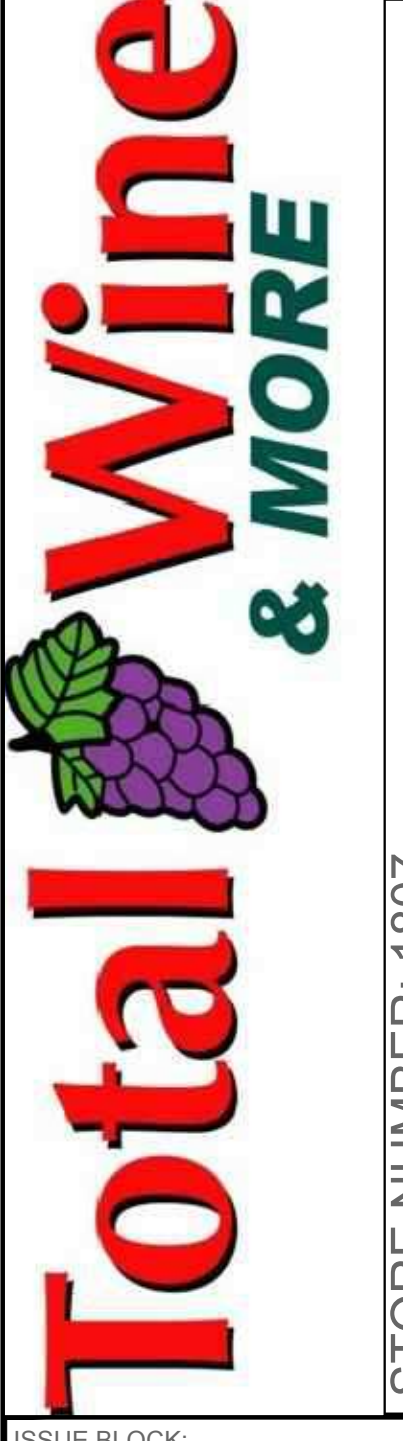


1 ENLARGED MECHANICAL FLOOR PLAN
SCALE: 1/4" = 1'-0"

NOTICE TO CONTRACTOR:
ALL CONTRACTORS PRIOR TO BID SUBMISSION SHALL VISIT PROPOSED WORK SITE AND FIELD VERIFY ALL EXISTING CONDITIONS. ANY CONDITION THAT DIFFERS FROM THAT SHOWN ON THESE PLANS SHALL BE REPORTED TO THE TENANT AND ARCHITECT OF RECORD SO THAT NEW AND REVISED BID DOCUMENTS MAY BE ISSUED. MODIFICATIONS TO THE SCOPE OF WORK, WHICH RESULTS FROM THE CONTRACTORS NEGLIGENCE TO VISIT THE SITE PRIOR TO SUBMITTING A BID SHALL BE THE CONTRACTOR'S SOLE RESPONSIBILITY. CONTACT AOR AND TENANT OF ANY CONFLICTS IN DOCUMENTS PRIOR TO STARTING WORK. GC IS RESPONSIBLE TO PROVIDE AND INSTALL EVERYTHING WITHIN THESE DOCUMENTS UNLESS NOTED OTHERWISE.



THIS DRAWING IS THE PROPERTY OF TOTAL WINE AND MORE. ANY USE OR REPRODUCTION IN WHOLE OR PART IS PROHIBITED WITHOUT THE EXPRESS WRITTEN CONSENT OF TOTAL WINE AND MORE. COPYRIGHT 2020 ALL RIGHTS RESERVED.
ADDRESS:
STORE # 1807
1548 NW CHIPMAN RD.
LEE'S SUMMIT, MO 64081



ISSUE BLOCK:	
RRMM MANAGED	07/2023
100% SET	8/21/2023
PERMIT SET	9/5/2023
CITY COMMENTS	10/2/2023



CHECKED BY: GMS
DRAWN BY: BJW/SEF
PROJECT #: 0424825-004
FILE: M1.2
SHEET NAME
ENLARGED MECHANICAL PLAN

SHEET NUMBER
M1.2

