

Report By:

National TAB
1329 E. KEMPER ROAD
SUITE 4210
CINCINNATI, OH 45246



Report: TAB REPORT
Function: Test, Adjust, & Balance
Date: 07/19/2023

PROJECT
07-10-23 CULVERS - PLANO, IL

6400 LAKESIDE RD

PLANO, IL 60545

Client

Accurex
PO Box 410
Schofield, WI 54476

Project Summary

The summary below provides a quick understanding of our scope of work and general testing procedures. Enclosed in the report is further detail about your building performance including recommendations, asset data, and pictures. Our focus is to work with the trades to remedy any issues or deficiencies during the actual field balancing and not after the balancing has occurred to achieve a positive environment and outcome. The level of success is determined by the availability of the trades, possible parts needed, or time constraints.

RTU's (Roof Top Units)

Each of the RTU's were measured at their terminal devices or via traverse to establish a total flow for that unit. Each RTU was adjusted to within tolerance of the engineer's design flow. Each outlet was then adjusted to within tolerance of the design flow. Outside air was measured by reading the intake air opening with a velocity grid and multiplying by the free area. The outside air damper was adjusted until the airflow was within the design requirements. Any equipment that fell outside of that tolerance is noted throughout the report.

Kitchen Exhaust Hood & Associated Fans

Each kitchen exhaust fan was measured at the hood filter bay utilizing a velocity matrix and a manufacturer's correction factor. Each filter velocity is multiplied by the manufacturer's corrected area. The sum of these readings equals the total flow of the exhaust fans. The total flow of the exhaust was then adjusted to within tolerance of the design flow.

General Exhaust Fans

The general exhaust fans were measured by reading each air device with a flow hood. The total airflow for each fan is equivalent to the sum of these readings. Fan speed was then adjusted so that the airflow was within tolerance of design. Each terminal device was balanced to within tolerance of the design volume using the installed volume dampers. Any equipment that fell outside of this tolerance is noted throughout the report.

Final Building Tests

After completing the test and balance the final building pressure was measured. It was confirmed that the building pressure fell within acceptable tolerances of $-0.02''$ wc to $+0.02''$ wc and that the pressure measurement coincides with the actual and design net airflow. Any deviations from these standards are noted throughout the report.

The hood capture was tested at the perimeter of the hood and the cook top level with the equipment heat on to ensure satisfactory hood capture and containment.

AIR BALANCE SCHEDULE

UNIT	AREA SERVED	HVAC SUPPLY		HVAC RETURN		HVAC OUTDOOR		OA %		HOOD MAKE-UP		HOOD EXHAUST		GENERAL EXH.	
		DESIGN	ACTUAL	DESIGN	ACTUAL	DESIGN	ACTUAL	DESIGN	ACTUAL	DESIGN	ACTUAL	DESIGN	ACTUAL	DESIGN	ACTUAL
RTU-1	DINING	6150	6228	4400	4374	1750	1854	28.5%	29.8%						
RTU-2	KITCHEN	6150	6222	4450	4444	1700	1778	27.6%	28.6%						
PRV-2	HOOD 1											1500	1516		
PRV-3	HOOD 2											1500	1608		
PRV-1	RESTROOMS													375	359
EF-1A	MOP ROOM													75	72
TOTALS		12300	12450	8850	8818	3450	3632			0	0	3000	3124	450	431

NET BUILDING AIRFLOW CALCULATION

TOTALS	DESIGN	ACTUAL
TOTAL OA	3450	3632
TOTAL EXHAUST	3450	3555
NET AIRFLOW	0	77

DOOR TESTED	BUILDING PRESSURE MEASUREMENTS (IN. H2O)
FRONT	0.006
SIDE	0.006
REAR	0.005
AVERAGE	0.0056

FINAL CHECKS

- ACTUAL NET AIRFLOW COINCIDES WITH DESIGN: ✓

- MEASURED PRESSURES COINCIDES WITH ACTUAL NET AIRFLOW: ✓

- PRESSURE FALLS WITHIN IMC TOLERANCE OF +/-0.02" W.C. ✓

NOTES:

CheckList List

- SITE PICTURES
- TECH - STEP 1: INITIAL WALKTHROUGH
- TECH - STEP 2: UNIT DATA AND EVAL
- TECH - STEP 3: TEST, ADJUST AND BALANCE
- TECH - STEP 4: FINAL TESTS



07-10-23 CULVERS - PLANO, IL

CheckList Information

Name : SITE PICTURES **Status :** Not Completed
Assigned Organization : National TAB **Asset :**
Requesting Organization : National TAB
Created Date : 06/08/2023 - Wale Odofin - National TAB

CheckList Item Details

STORE FRONT

Comment:

RTU-1

Comment:



DOAS-1
07/18/2023



Unitlabel
07/18/2023

RTU-2

Comment:



DOAS-2
07/18/2023



Unitlabel
07/18/2023

PRV-1

Comment:



PRV-1
07/18/2023



Unitlabel
07/18/2023



File
07/18/2023

PRV-2

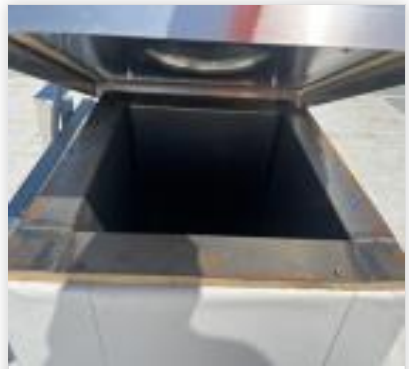
Comment:



PRV-2
07/18/2023



Unitlabel
07/18/2023



Curb
07/18/2023

PRV-3

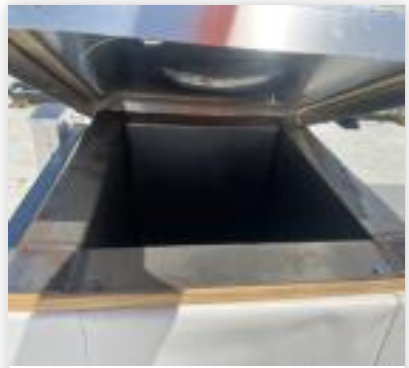
Comment:



PRV-3
07/18/2023



Unitlabel
07/18/2023



Curb
07/18/2023

EF-1A

Comment:



Switch
07/18/2023



EF-1A
07/18/2023

HOOD 1

Comment:



HD-1
07/18/2023



Unitlabel
07/18/2023

HOOD 2

Comment:



HD-2
07/18/2023



Unitlabel
07/18/2023



07-10-23 CULVERS - PLANO, IL

CheckList Information

Name : TECH - STEP 1: INITIAL WALKTHROUGH **Status :** Not Completed
Assigned Organization : National TAB **Asset :**
Requesting Organization : National TAB
Created Date : 06/08/2023 - Wale Odofin - National TAB

CheckList Item Details

INITIAL SITE WALKTHROUGH

All diffusers and grilles are installed and match design?

Comment:

Yes

Perforated diffusers are installed on the cook line? (4-ways will disrupt hood capture)

Comment:

Yes



Perforatedcookline.jp..
07/18/2023

All hood filters installed and accounted for?

Comment:

Yes

Hoods are wired and have power?

Comment:

Hoods were not properly wired on arrival. PRV-2 was not operating and fire system was not wired to DOAS units.

Thermostats have power?

Comment:

Yes

Have trades/general contractor been notified about any issues and are they created on FaciliBuild?

Comment:

Yes



07-10-23 CULVERS - PLANO, IL

CheckList Information

Name : TECH - STEP 2: UNIT DATA AND EVAL **Status :** Not Completed
Assigned Organization : National TAB **Asset :**
Requesting Organization : National TAB
Created Date : 06/08/2023 - Wale Odofin - National TAB

CheckList Item Details

UNIT DATA AND EVALUATION WHILE GATHERING UNIT DATA CHECK THE FOLLOWING:

RTU's/AHU's

Economizers are assembled and functional?

Comment:

Yes

Thermostat wire run from OCP on the RTU to the Ec terminal at the thermostat? If no, jumper can be installed from R to OCP temporarily. (The economizers will not open without OCP being energized.)

Comment:

NA

Motors are all operating below the FLA rating?

Comment:

Yes

Are belts tight?

Comment:

NA, direct drive units.

If direct drive unit is the speed controller working.

Comment:

Yes

Is gas piping installed and valves turned on?

Comment:

Yes

Unit free of noticeable noise and vibration

Comment:

Yes

EF's

Rotation is correct?

Comment:

Yes

Belts are tight?

Comment:

NA, fans are direct drive.

Grease cup installed on hood fan?

Comment:

Yes

Hinge kit installed installed on hood fan?

Comment:

Yes

Lean grease rated fans back. Is grease duct installation adequate and is duct ran all the way to the base of the fan?

Comment:

Yes

Flex conduit is long enough so that fan can be completely tilted back?

Comment:

Yes

There is no major leakage around base of fan?

Comment:

Yes

Is the motor operating below the motor FLA rating?

Comment:

Yes

For restroom fan(s) is the back draft damper installed and can it fully open?

Comment:

Yes



**Backdraftinstalled.jp..
07/18/2023**

Unit free of noticeable noise and vibration?

Comment:

Yes

The hood exhaust fans are installed in correct positions and are not switched?

Comment:

Yes

HOODS

Kitchen equipment installed in proper places?

Comment:

Yes

Can kitchen equipment be turned on for final smoke test?

Comment:

Yes

Second stage Grease Grabber filters are installed on the griddle hood?

Comment:

Yes

DOCUMENTATION

Have trades/general contractor been notified about any issues and are they created on FaciliBuild?

Comment:

Yes



07-10-23 CULVERS - PLANO, IL

CheckList Information

Name : TECH - STEP 3: TEST, ADJUST AND BALANCE **Status :** Not Completed
Assigned Organization : National TAB **Asset :**
Requesting Organization : National TAB
Created Date : 06/08/2023 - Wale Odofin - National TAB

CheckList Item Details

TEST, ADJUST, AND BALANCE ALL EQUIPMENT:

DURING TESTING MAKE NOTE OF THE FOLLOWING:

Is space free of drafting?

Comment:

Yes

Is space comfortable in all areas?

Comment:

Yes

Is the space free of ventilation noise?

Comment:

Yes

If deviations from design were necessary to resolve 1-3 what were they? Otherwise put "NA".

Comment:

NA



07-10-23 CULVERS - PLANO, IL

CheckList Information

Name : TECH - STEP 4: FINAL TESTS **Status :** Not Completed
Assigned Organization : National TAB **Asset :**
Requesting Organization : National TAB
Created Date : 06/08/2023 - Wale Odofin - National TAB

CheckList Item Details

FINAL TESTS

HOOD CAPTURE TEST

List equipment turned on for testing

Comment:

Griddle, Fryer

List smoke candle type used

Comment:

45 second smoke emitter

Smoke test capture - Perimeter of hood

Comment:

100%-Griddle 100%-Fryer

Smoke test capture - Top of cooking surface

Comment:

100%-Griddle 100%-Fryer

WITNESS

Date test was completed

07/18/2023

Comment:

TAB tech name / Firm

Comment:

Michael McDonnell / National Tab

Site super name / Firm

Comment:

Todd Webber / Campbell Construction

Owner representative name / Firm (if Applicable)

Comment:

NA

Building pressure at front & back doors (All Systems On)

Comment:

Front: 0.006" Back: 0.005"

ADDITIONAL

Do actual net building airflow, design net building airflow, and pressure coincide? If not why? (All three should either be positive or negative)

Comment:

Yes

Thermostats are programmed?

Comment:

Yes

National TAB

Project: 07-10-23 CULVERS - PLANO, IL

System/Unit: AHU/RTU



Asset: RTU1

AREA:

Unit Data		
	Design	Actual
MFG	ACCUREX/CAPTIVEAIRE	ACCUREX
Serial Num	-	21747191
Model Num	NA	XRV-25-15J-J-G1
Type	RTU	RTU
Configuration	VERTICAL	VERTICAL
Num OA Filters 1	-	2
OA Filter Size 1	-	18X18
Num Final Filter 1	-	2
Final Filter Size 1	-	20X24X2
Num Final Filter 2	-	2
Final Filter Size 2	-	20X20X2

Motor Data		
	Design	Actual
Motor MFG	-	BALDOR RELIANCE
Frame	-	215T
Horsepower	-	10.0
Motor Rpm	-	1770
Phase	3	3
Rated Voltage	208	230
Rated Amperage	-	25.0

Drive Data		
	Design	Actual
Motor Sheave Size	-	DD
Motor Bore Size	-	DD
Motor Sheave SetPt	-	96%
Fan Sheave Size	-	DD
Fan Sheave Bore	-	DD
Belt CL Distance	-	DD
Num of Belts	-	DD
Belt Size	-	DD
Belt Alignment	-	DD

Test Data		
	Design	Actual
SF CFM	6150	6228
SF RPM	-	DD
RA CFM	4400	4374
OA CFM	1750	1854
RL Voltage	-	152.9/153.2/152.9
RL Amperage	-	16.3 @ VFD
SF Rotation	-	CORRECT
RA Damper Position	-	70%
Min OA Damper Position	-	30%
Min OA Damper Type	-	ECONOMIZER

Performance Data		
	Design	Actual
MA Plenum SP	-	-0.32"
Fan Discharge SP	-	0.73"
Total ESP	0.75"	1.05"

General		
	Design	Actual
Fan Rotation Correct	-	YES
Unit Filters Clean	-	YES
Condensate Drain Installed	-	YES

Completed By: Michael McDonnell on 07/19/2023

National TAB

Project:07-10-23 CULVERS - PLANO, IL

AHU/RTU



Diffuser Supply (GRD)

RTU1/

Asset									
Asset Name	Location	Type	Size	DESIGN CFM	AK	CFM(1)	CFM(2)	FINAL CFM	% to design
SGRD1	DINING	SD3	8"	150	1.0	93	141	144	96.0
SGRD2	DINING	SD1	8"	150	1.0	154	226	159	106.0
SGRD3	DINING	SD1	8"	150	1.0	122	145	150	100.0
SGRD4	DINING	SD1	8"	150	1.0	141	195	156	104.0
SGRD5	DINING	SD1	8"	150	1.0	102	143	158	105.3
SGRD6	DINING	SD1	8"	150	1.0	19	140	165	110.0
SGRD7	DINING	SD1	8"	150	1.0	104	128	147	98.0
SGRD8	DINING	SD1	8"	150	1.0	119	163	159	106.0
SGRD9	DINING	SD1	8"	150	1.0	138	191	153	102.0
SGRD10	DINING	SD1	8"	150	1.0	194	259	136	90.7
SGRD11	DINING	SD1	8"	150	1.0	136	184	160	106.7
SGRD12	DINING	SD1	8"	150	1.0	143	184	161	107.3
SGRD13	DINING	SD1	8"	150	1.0	109	144	161	107.3
SGRD14	DINING	SD1	8"	150	1.0	163	209	162	108.0
SGRD15	DINING	SD1	8"	150	1.0	135	182	150	100.0
SGRD16	DINING	SD1	8"	150	1.0	62	91	160	106.7
SGRD17	DINING	SD1	10"	300	1.0	269	388	288	96.0
SGRD18	DINING	SD1	8"	150	1.0	183	256	148	98.7
SGRD19	DINING	SD1	12"	500	1.0	298	462	502	100.4
SGRD20	DINING	SD1	12"	200	1.0	140	177	215	107.5
SGRD21	DINING	SD1	10"	450	1.0	262	340	443	98.4
SGRD22	DINING	SD1	10"	350	1.0	187	263	323	92.3
SGRD23	DINING	SD1	10"	350	1.0	205	269	343	98.0
SGRD24	DINING	SD1	10"	350	1.0	258	356	383	109.4
SGRD25	DINING	SD1	10"	350	1.0	211	319	341	97.4
SGRD26	DINING	SD1	12"	450	1.0	316	451	446	99.1
SGRD27	DINING	SD4	8"	150	1.0	134	167	138	92.0
SGRD28	DINING	SD4	8"	150	1.0	87	118	177	118.0
Total				6150		4484	6291	6228	101.27%

Completed By: Michael McDonnell on 07/17/2023

National TAB

Project: 07-10-23 CULVERS - PLANO, IL

System/Unit: AHU/RTU



Asset: RTU2

AREA:

Unit Data		
	Design	Actual
MFG	ACCUREX/CAPTIVEAIRE	ACCUREX
Serial Num	-	21747196
Model Num	NA	XRV-25-15J-J-G1
Type	RTU	RTU
Configuration	VERTICAL	VERTICAL
Num OA Filters 1	-	2
OA Filter Size 1	-	18X18
Num Final Filter 1	-	2
Final Filter Size 1	-	20X24X2
Num Final Filter 2	-	2
Final Filter Size 2	-	20X20X2

Motor Data		
	Design	Actual
Motor MFG	-	BALDOR RELIANCE
Frame	-	215T
Horsepower	-	10.0
Motor Rpm	-	1770
Phase	3	3
Rated Voltage	208	230
Rated Amperage	-	25.0

Drive Data		
	Design	Actual
Motor Sheave Size	-	DD
Motor Bore Size	-	DD
Motor Sheave SetPt	-	96%
Fan Sheave Size	-	DD
Fan Sheave Bore	-	DD
Belt CL Distance	-	DD
Num of Belts	-	DD
Belt Size	-	DD
Belt Alignment	-	DD

Test Data		
	Design	Actual
SF CFM	6150	6222
SF RPM	-	DD
RA CFM	4450	4444
OA CFM	1700	1778
RL Voltage	-	153.5/152.9/153.3
RL Amperage	-	16.2 @ VFD
SF Rotation	-	CORRECT
RA Damper Position	-	71%
Min OA Damper Position	-	29%
Min OA Damper Type	-	ECONOMIZER

Performance Data		
	Design	Actual
MA Plenum SP	-	-0.26"
Fan Discharge SP	-	0.81"
Total ESP	0.75"	1.07"

General		
	Design	Actual
Fan Rotation Correct	-	YES
Unit Filters Clean	-	YES
Condensate Drain Installed	-	YES

Completed By: Michael McDonnell on 07/19/2023

National TAB

Project:07-10-23 CULVERS - PLANO, IL

AHU/RTU



Diffuser Supply (GRD)

RTU2/

Asset									
Asset Name	Location	Type	Size	DESIGN CFM	AK	CFM(1)	CFM(2)	FINAL CFM	% to design
SGRD1	KITCHEN	SD1	12"	600	1.0	340	514	609	101.5
SGRD2	KITCHEN	SD1	12"	600	1.0	365	550	640	106.7
SGRD3	KITCHEN	SD5	8"	200	1.0	173	239	205	102.5
SGRD4	KITCHEN	SD5	12"	375	1.0	339	451	367	97.9
SGRD5	KITCHEN	SD5	12"	400	1.0	221	318	400	100.0
SGRD6	KITCHEN	SD5	12"	400	1.0	360	521	402	100.5
SGRD7	KITCHEN	SD5	10'	250	1.0	253	310	241	96.4
SGRD8	KITCHEN	SD5	10"	275	1.0	170	268	278	101.1
SGRD9	TOILET	SD1	6"	75	1.0	123	178	72	96.0
SGRD10	KITCHEN	SD1	8"	125	1.0	118	159	122	97.6
SGRD11	KITCHEN	SD5	12"	350	1.0	314	429	368	105.1
SGRD12	KITCHEN	SD5	12"	350	1.0	268	346	341	97.4
SGRD13	KITCHEN	SD5	12"	350	1.0	366	500	336	96.0
SGRD14	DRY GOODS	SD1	12"	600	1.0	335	476	623	103.8
SGRD15	DRY GOODS	SD1	12"	600	1.0	336	474	579	96.5
SGRD16	UTILITY ROOM	SD1	12"	600	1.0	386	551	639	106.5
Total				6150		4467	6284	6222	101.17%

Completed By: Michael McDonnell on 07/17/2023

National TAB

Project: 07-10-23 CULVERS - PLANO, IL
System/Unit: FAN - Exhaust



Asset: EFA1

AREA:

Unit Data		
	Design	Actual
MFG	ACCUREX	ACCUREX
Model Num	XCR-B80	XCR-B80
Type	CEILING	CEILING
Configuration	VERTICAL	VERTICAL

Test Data		
	Design	Actual
CFM	75	72
Fan RPM	885	900
Fan Rotation	-	CORRECT
Motor RPM	-	900
System SetPt	-	MAX
RL Voltage	-	120
RL Amperage	-	0.7
Total ESP	0.125"	.091"
Fan Inlet SP	-	ATM
Fan Discharge SP	-	0.091"

Motor Data		
	Design	Actual
Motor MFG	-	NA
Motor Rpm	900	900
Phase	1	1
Voltage (rated)	115	115
Amperage (rated)	-	1.2

Completed By: Michael McDonnell on 07/17/2023

Notes:

[1] FAN IS CONTROLLED BY LIGHT SWITCH LOCATED UNDERNEATH FAN. SWITCH ALSO POWERS PRV-1 (RESTROOMS).

Written By: Michael McDonnell on 07/19/2023

National TAB

Project: 07-10-23 CULVERS - PLANO, IL

System/Unit: FAN - Exhaust



Asset: PRV1

AREA:

Unit Data		
	Design	Actual
MFG	ACCUREX	ACCUREX
Model Num	XRED-090-VG	XRED-090-VG-1-17-X
Serial Num	-	21812842
Type	DOWNBLAST	DOWNBLAST
Configuration	VERTICAL	VERTICAL

Motor Data		
	Design	Actual
Motor MFG	-	VARI-GREEN
Frame	-	NL
Horsepower	-	0.10
Motor Rpm	-	300-1750
Phase	1	1
Voltage (rated)	115	115
Amperage (rated)	-	1.38

Test Data		
	Design	Actual
CFM	375	359
Fan RPM	1465	DD
Fan Rotation	-	CCW
Motor RPM	-	DD
System SetPt	-	6@POTENTIOMETER
RL Voltage	-	NA
RL Amperage	-	NA
Total ESP	0.5	0.11"
Fan Inlet SP	-	-0.11"
Fan Discharge SP	-	ATM

Completed By: Michael McDonnell on 07/18/2023

Notes:
[1] FAN IS CONTROLLED BY EF-1A LIGHT SWITCH. FANS ARE ON SAME CIRCUIT.

Written By: Michael McDonnell on 07/19/2023

National TAB

Project:07-10-23 CULVERS - PLANO, IL

FAN - Exhaust



Diffuser Ret/Exh (GRD)

PRV1/

Asset									
Asset Name	Location	Type	Size	DESIGN CFM	AK	CFM(1)	CFM(2)	FINAL CFM	% to design
EGRD1	M.RESTROOM	EG1	8X8	150	1.0	215	147	147	98.0
EGRD2	W.RESTROOM	EG1	8X8	150	1.0	167	136	136	90.7
EGRD3	TOILET	EG1	8X8	75	1.0	91	76	76	101.3
Total				375		473	359	359	95.73%

Completed By: Michael McDonnell on 07/18/2023

National TAB

Project: 07-10-23 CULVERS - PLANO, IL

System/Unit: FAN - Exhaust



Asset: PRV2

AREA:HOOD 1

Unit Data		
	Design	Actual
MFG	ACCUREX	ACCUREX
Model Num	XRUB-160XP-15	XCUE-140-10-VG-1-26-G
Serial Num	-	21812392
Type	UPBLAST	UPBLAST
Configuration	VERTICAL	VERTICAL

Motor Data		
	Design	Actual
Motor MFG	-	VARI-GREEN
Horsepower	-	1.0
Motor Rpm	-	300-1750
Phase	3	1
Voltage (rated)	208	115
Amperage (rated)	-	11.5

Drive Data		
	Design	Actual
Motor Sheave Size	-	DD
Motor Bore Size	-	DD
Motor Sheave SetPt	-	7.4V
Fan Sheave Size	-	DD
Fan Sheave Bore	-	DD
Belt CL Distance	-	DD
Num of Belts	-	DD
Belt Size	-	DD

Test Data		
	Design	Actual
CFM	1500	1516
Fan RPM	-	1295
Fan Rotation	-	CORRECT
Motor RPM	-	1295
RL Voltage	-	121
RL Amperage	-	2.3
Suction ESP	-	-0.81"
Discharge ESP	-	ATM
Total ESP	2.337"	0.81"

Completed By: Michael McDonnell on 07/18/2023

National TAB

Project: 07-10-23 CULVERS - PLANO, IL

System/Unit: FAN - Exhaust



Asset: PRV3

AREA:HOOD 2

Unit Data		
	Design	Actual
MFG	ACCUREX	ACCUREX
Model Num	XRUB-140-7	XCUE-140-10-VG-1-26-G
Serial Num	-	21812468
Type	UPBLAST	UPBLAST
Configuration	VERTICAL	VERTICAL

Motor Data		
	Design	Actual
Motor MFG	-	VARI-GREEN
Horsepower	-	1.0
Motor Rpm	-	300-1750
Phase	3	1
Voltage (rated)	208	115
Amperage (rated)	-	11.5

Drive Data		
	Design	Actual
Motor Sheave Size	-	DD
Motor Bore Size	-	DD
Motor Sheave SetPt	-	6.1V
Fan Sheave Size	-	DD
Fan Sheave Bore	-	DD
Belt CL Distance	-	DD
Num of Belts	-	DD
Belt Size	-	DD

Test Data		
	Design	Actual
CFM	1500	1608
Fan RPM	1377	1068
Fan Rotation	-	CORRECT
Motor RPM	-	1068
RL Voltage	-	121
RL Amperage	-	1.6
Suction ESP	-	-0.43"
Discharge ESP	-	ATM
Total ESP	1.0"	0.43"

Completed By: Michael McDonnell on 07/18/2023

National TAB

Project: 07-10-23 CULVERS - PLANO, IL

System/Unit: Kitchen Hood Type I



Asset: HD1

AREA:

Unit Data		
	Design	Actual
MFG	ACCUREX	ACCUREX
Model Num	XGEP-64-S	XGEP-64-S
Job / Serial Num	-	21816229
Type	TYPE I	TYPE I
Hood length	64"	64"
Hood Width	23"	23"

Test Data Exhaust		
	Design	Actual
Filter Type	GREASE GBRABBER	GREASE GRABBER
Filter Size 1	16X16	16X16
Filter Qty 1	4	4
Filter AK factor size 1	1.53	1.53
Filter Total AK Area	6.12	6.12
Filter1 FPM	-	264
Filter2 FPM	-	226
Filter3 FPM	-	235
Filter4 FPM	-	266
Filter Ave FPM(corr)	-	247.75
CFM	1500	1516

Cooking Equipment		
	Design	Actual
Item 1	-	GRIDDLE

Completed By: Michael McDonnell on 07/18/2023

National TAB

Project: 07-10-23 CULVERS - PLANO, IL

System/Unit: Kitchen Hood Type I



Asset: HD2

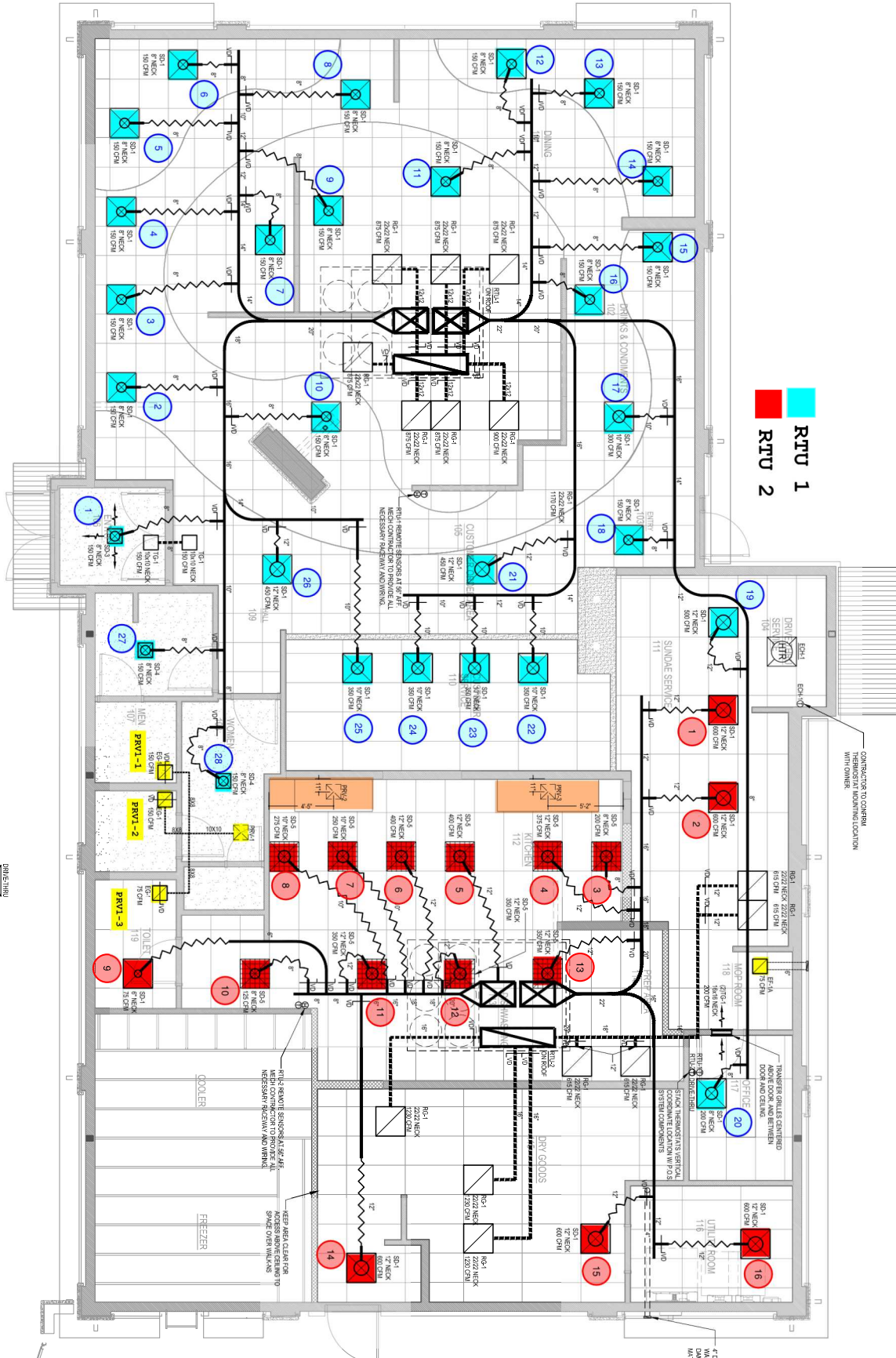
AREA:

Unit Data		
	Design	Actual
MFG	ACCUREX	ACCUREX
Model Num	XXEP-83-S	XXEP-83-S
Job / Serial Num	-	21816228
Type	TYPE I	TYPE I
Hood length	83"	83"
Hood Width	24"	24"

Test Data Exhaust		
	Design	Actual
Filter Type	XTRACTOR	XTRACTOR
Filter Size 1	16X16	16X16
Filter Qty 1	5	5
Filter AK factor size 1	1.53	1.53
Filter Total AK Area	7.65	7.65
Filter1 FPM	-	206
Filter2 FPM	-	202
Filter3 FPM	-	210
Filter4 FPM	-	211
Filter5 FPM	-	222
Filter Ave FPM(corr)	-	210.2
CFM	1500	1608

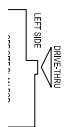
Cooking Equipment		
	Design	Actual
Item 1	-	FRYER

Completed By: Michael McDonnell on 07/18/2023



RTU 1
RTU 2

(E5) HVAC PLAN



CONTRACTOR TO COORDINATE THERMOSTAT MOUNTING LOCATION WITH OWNER

OWNER EXHAUST TO HODDGE WALL CAP IN BLDG EXHAUST MATHS EXTERIOR