

FOR CONSTRUCTION



STORE NO.: 5397
 MORGANTON, NC
 1219 BURKEMONT AVE
 MORGANTON, NC 28655

REV	DATE	DESCRIPTION
1	03.12.2014	ISSUED FOR PERMIT
2	03.12.2014	ISSUED FOR CONSTRUCTION
3	03.12.2014	ISSUED FOR CONSTRUCTION
4	03.12.2014	ISSUED FOR CONSTRUCTION
5	03.12.2014	ISSUED FOR CONSTRUCTION
6	03.12.2014	ISSUED FOR CONSTRUCTION
7	03.12.2014	ISSUED FOR CONSTRUCTION
8	03.12.2014	ISSUED FOR CONSTRUCTION
9	03.12.2014	ISSUED FOR CONSTRUCTION
10	03.12.2014	ISSUED FOR CONSTRUCTION
11	03.12.2014	ISSUED FOR CONSTRUCTION
12	03.12.2014	ISSUED FOR CONSTRUCTION
13	03.12.2014	ISSUED FOR CONSTRUCTION
14	03.12.2014	ISSUED FOR CONSTRUCTION
15	03.12.2014	ISSUED FOR CONSTRUCTION
16	03.12.2014	ISSUED FOR CONSTRUCTION
17	03.12.2014	ISSUED FOR CONSTRUCTION
18	03.12.2014	ISSUED FOR CONSTRUCTION
19	03.12.2014	ISSUED FOR CONSTRUCTION
20	03.12.2014	ISSUED FOR CONSTRUCTION

Project No: 2403024
 Date: 03/12/2014
 Project Name: HVAC SCHEDULES

M600

TAG	DESCRIPTION	FACE SIZE	MATERIAL	FINISH	MOUNTING	FURNISHED BY	INSTALLED BY	BASIS FOR DESIGN		NOTES
								MANUFACTURER	MODEL	
025	PERFORATED CEILING DIFFUSER	24" x 24"	ALUMINUM	WHITE	LAY-IN CEILING	GC	GC	RAKOR	4330A TYPE 1	PROVIDE INTERNAL GRID
026	PERFORATED CEILING DIFFUSER	24" x 24"	ALUMINUM	WHITE	GYF CEILING	GC	GC	RAKOR	4330A TYPE 5	PROVIDE INTERNAL GRID
045	PERFORATED CEILING CHAUST	12" x 12"	ALUMINUM	WHITE	GYF CEILING	GC	GC	RAKOR	4330A TYPE 5	PROVIDE INTERNAL GRID
046	PERFORATED CEILING CHAUST	12" x 12"	ALUMINUM	WHITE	LAY-IN CEILING	GC	GC	RAKOR	4330A TYPE 1	PROVIDE INTERNAL GRID
052	PERFORATED CEILING CHAUST	24" x 24"	ALUMINUM	WHITE	GYF CEILING	GC	GC	RAKOR	4330A TYPE 5	PROVIDE INTERNAL GRID
053	PERFORATED CEILING CHAUST	24" x 24"	ALUMINUM	WHITE	LAY-IN CEILING	GC	GC	RAKOR	4330A TYPE 1	PROVIDE INTERNAL GRID
081	ADJUSTABLE TURBO NOZZLE	5/8" NPT	ALUMINUM	WHITE	WALL	GC	GC	AMB CONCEPTS	AMB 12	PROVIDE FACTORY-FINISHED GRID
082	SMALL DIFFUSION SUPPLY REGISTER	5/8" NPT	ALUMINUM	WHITE	WALL	GC	GC	RAKOR	5130	PROVIDE INTERNAL GRID

TAG	COUNT	DESCRIPTION	FURNISHED BY	INSTALLED BY	BASIS FOR DESIGN		REMARKS
					MANUFACTURER	MODEL	
SP-1	2	BATHROOM AIR PURIFICATION UNIT	TRV	GC	RFQ ENVIRONMENTAL GROUP	RFQ-RS-100	SEE ELECTRICAL SHEETS FOR CONNECTION INFORMATION
SP-2	2	KITCHEN PURIFICATION UNIT	TRV	GC	RFQ ENVIRONMENTAL GROUP	RFQ-RS-100	SEE ELECTRICAL SHEETS FOR CONNECTION INFORMATION
SP-3	3	ICE MACHINE TREATMENT SYSTEM	TRV	GC	RFQ ENVIRONMENTAL GROUP	RFQ-RS-100	SEE ELECTRICAL SHEETS FOR CONNECTION INFORMATION

TAG	QUANTITY	DESCRIPTION	DUCT CONNECTION SIZE	FAN	FURNISHED BY	INSTALLED BY	BASIS FOR DESIGN
VBS-1	3	PROHIBITED ROOM (KITCHEN) CONTAMINANT SYSTEM	12" x 12"	CAPTRON	GC	GC	BY DRAWING

TAG	DRIVE TYPE	EXHAUST FLOW (CFM)	E.S.P. (in. W.C.)	WEIGHT (lbs)	ELECTRICAL		FURNISHED BY	INSTALLED BY	BASIS FOR DESIGN		REMARKS
					MOTOR POWER (HP)	V/PH			MANUFACTURER	MODEL	
EF-1	DIRECT	252 CFM	1.20 in. W.C.	400	2	208/3/60	HS	GC	CAPTRON	0438WA	FURNISHED WITH DISCONNECT, WIRING & SPEED CONTROLLER, BACKDRAFT DAMPER AND ROOF CURB
EF-2	DIRECT	150 CFM	1.00 in. W.C.	300	1	115/1/60	HS	GC	CAPTRON	0438WA	FURNISHED WITH DISCONNECT, WIRING & SPEED CONTROLLER, BACKDRAFT DAMPER AND ROOF CURB

Tag	Supply Flow (CFM)	Return Flow (CFM)	Exhaust Flow (CFM)	Subtotal (CFM)
EF-1	252	0	252	252
EF-2	150	0	150	150
MAU-1	1075	0	0	1075
RTU-1	3200	3200	0	100
RTU-2	2400	2400	0	100
GRAND TOTAL				100

TAG	DESCRIPTION	AIRFLOW (CFM)	E.S.P. (in. W.C.)	INPUT POWER (MBH)	HEATING CAPACITY (BTU/H)	APPROXIMATE WEIGHT (lbs)	ELECTRICAL		FURNISHED BY	INSTALLED BY	BASIS FOR DESIGN		REMARKS
							MOTOR POWER (HP)	V/PH			MANUFACTURER	MODEL	
MAU-1	MAKEUP AIR UNIT	1075	0.80	225	240	32.5	18 HP	115/1/60	HS	GC	CAPTRON	A10-250-150	FURNISHED WITH DISCONNECT, BACK CURB, SCREEN INTAKE, AND VISIBLY ALUMINUM FILTERS

CONTROL FUNCTIONS

A. THE MAIN COOKING EXHAUST FAN AND MAKEUP AIR UNIT SHALL BE INTERLOCKED TO OPERATE TOGETHER. THIS CONTROL CIRCUIT SHALL BE ACTIVATED BY SWITH AND INCLUDE A FIRE PROTECTION OVERRIDE.

B. THE TEMPERATURE IN EACH ZONE IS CONTROLLED BY SPACE TEMPERATURE SENSORS CONNECTED TO THE THURMO-LOGIC SYSTEM. IN EACH ZONE, ALL ZONES SHALL OPERATE IN THE CONTROLLER AND OPERATION DURING OCCUPANCY. TEMPERATURE SENSORS SHALL BE LOCATED IN EACH ZONE. POINTS DURING UNOCCUPIED TIMES, QUIT ALL ZONES SHALL BE OPEN CONTINUOUSLY. WHEN BEING OCCUPIED, ZONES OR ZONE THE ROOM SYSTEM IS ON AND SHALL BE CLOSED DURING UNOCCUPIED PERIODS.

C. THE THURMO-LOGIC SHALL DETERMINE OCCUPANCY BASED ON DATA BASED ON THE SCHEDULE IN THE ENERGY MANAGEMENT SYSTEM.

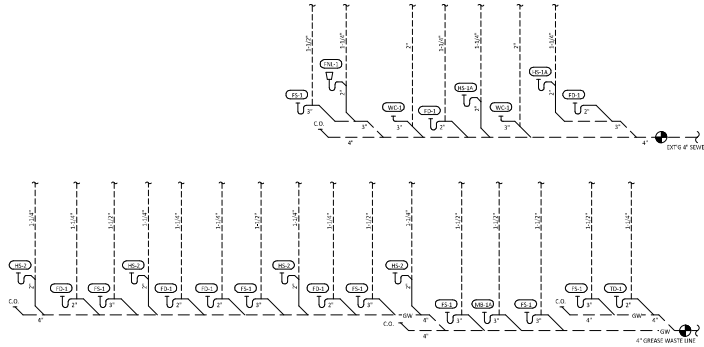
TAG	DESCRIPTION	NOMINAL CAPACITY (TONS)	NUMBER OF COMPRESSORS	NUMBER OF CIRCUITS	REFRIGERANT TYPE	REFRIGERANT CHARGE (lbs)	ELECTRICAL		FURNISHED BY	INSTALLED BY	BASIS FOR DESIGN		REMARKS	
							MOCP	FLA			MANUFACTURER	MODEL		
CU-1	WALK-IN COOLER REFRIG. CONDENSING UNIT	-	0	1	R-404A	11.9x 7.4x 30	100	15A	6.5A	208/3/60	YES	GC	-	FURNISHED WITH ICE MAKER
CU-2	ICE MAKER REFRIG. CONDENSER	-	0	1	R-404A	11.9x 7.4x 30	100	15A	6.5A	208/3/60	YES	GC	-	FURNISHED WITH ICE MAKER
CU-3	ICE MAKER REFRIG. CONDENSER	-	0	1	R-404A	11.9x 7.4x 30	100	15A	6.5A	208/3/60	YES	GC	-	FURNISHED WITH ICE MAKER

TAG	DESCRIPTION	MAX COOKING AIRFLOW (CFM)	TEMP. (°F)	EXHAUST PLENUM				PERFORATED SUPPLY PLENUMS				NUMBER OF LIGHT FIXTURES	APPROXIMATE WEIGHT (lbs)	FURNISHED BY	INSTALLED BY	BASIS FOR DESIGN		REMARKS									
				NO.	WIDTH (in.)	LENGTH (in.)	WIDTH (in.)	NO.	WIDTH (in.)	LENGTH (in.)	WIDTH (in.)					MANUFACTURER	MODEL										
PH-1	120" x 36" Island Hood with Perforated MAU and AC Supply Penum	6000	200	1	16"	16"	11'	2"	2"	1	14"	14"	24"	2015	1	10"	16"	800	7	8"	9	550	HS	GC	CAPTRON	804-80-2405P1	MAU-1 IN GA. TYPE 430 SS. PROVIDE WITH (3) 16" X 16" SS FILTERS, INTEGRAL UTILITY CABINET, AND AN 8" DIA. 1/2" DIA. COIL AIR TEMPERATURE SENSOR & PRESSURE PACKAGE

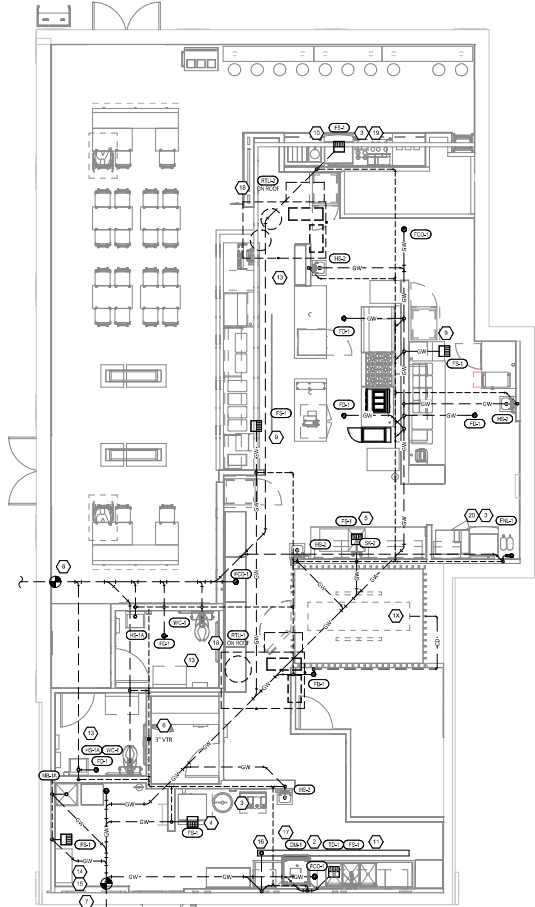
TAG	DESCRIPTION	NOMINAL CAPACITY (TONS)	EER	AIRFLOW			NET COOLING CAPACITY			HEATING CAPACITY			# OF REFRIG. COMPRESSORS	# OF CIRCUITS	REFRIG. TYPE	REFRIG. CHARGE (lbs)	APPROX. WEIGHT (lbs)	ELECTRICAL			FURNISHED BY	INSTALLED BY	BASIS FOR DESIGN		REMARKS	
				TOTAL (CFM)	OA (CFM)	ESP (in. W.C.)	TOTAL (MBH)	SENSIBLE (EAT (DEG. F))	COND. EAT (DEG. F)	INPUT (MBH)	OUTPUT (MBH)	EAT (DEG. F)						MOCP	FLA	V/PH			MANUFACTURER	MODEL		
RTU-1	ROOFTOP UNIT	10	12	3100	500	0.8	114	73	76	86	99	140	140	2	2	R-410A	75.8	1500	60A	45.0A	300/3/60	YES	GC	CARRIER	40FC-M13	FURNISHED WITH (2) ACCESS PANELS, 2 CONDENSING PANS AND (2) 16" X 16" X 1" FILTERS, 8" DIA. 1/2" DIA. COIL AIR TEMPERATURE SENSOR & PRESSURE PACKAGE. INTEGRAL UTILITY CABINET WITH (3) 16" X 16" X 1" FILTERS, CURB, HALL GUARD, DISCONNECT & AMP AND W/100V NON-FRUITED CONDENSATE TRAY
RTU-2	ROOFTOP UNIT	8.5	12	3100	500	0.8	101	61	61	71	81	130	130	2	2	R-410A	65.8	1300	50A	30.0A	300/3/60	YES	GC	CARRIER	40FC-M13	FURNISHED WITH (2) ACCESS PANELS, 2 CONDENSING PANS AND (2) 16" X 16" X 1" FILTERS, 8" DIA. 1/2" DIA. COIL AIR TEMPERATURE SENSOR & PRESSURE PACKAGE. INTEGRAL UTILITY CABINET WITH (3) 16" X 16" X 1" FILTERS, CURB, HALL GUARD, DISCONNECT & AMP AND W/100V NON-FRUITED CONDENSATE TRAY

PLUMBING WASTE AND VENT PLAN NOTES

- 1X PROVIDE 3/4" CONDENSATE DRAIN FROM THE WALL IN COOLER EVAPORATOR TO THE FLOOR DRAIN AS SHOWN. SLOPE CONDENSATE DRAIN A MINIMUM OF 1" PER FOOT. HOLD IMPOSED CONDENSATE DRAIN IN WALL IN COOLER AS HIGH AS POSSIBLE. CONCEAL DRAIN PIPING WITHIN TRIMMED WALLS AS SHOWN. DISCHARGE THROUGH AN AIR GAP. MAKE FINAL CONNECTION TO EVAPORATOR ROSE. WALL IN COOLER OPEN A HOLE. CONDENSATE DRAIN SHOULD TRIM TRIM WALL AT 1" OFF AND BE SECURED TO FLOOR.
- 2 PROVIDE DRAIN CONNECTIONS TO THE THREE COMPARTMENT SINK PER DETAIL 2.9700.
- 3 COORDINATE ROUTING OF SOGA BUNDLES WITH COCA-COLA TECHNICIAN FROM BAG-IN BOX MUA TO EACH SOGA UNIT. OTHER THAN WITHIN THE WALLS LEADING TO THE TOPS FOR THE SOGA BUNDLE SHALL BE ROUTED OVERHEAD IN THOUT CONDUIT. COORDINATE SUPPORT AND ROUTING OF THE COCA-COLA BUNDLES WITH COCA-COLA TECHNICIAN FROM BAG-IN AND PROVIDE NECESSARY SUPPORT'S. SEE ARCHITECTURAL DRAWINGS FOR SOGA BUNDLE TERMINATION LOCATION AND PROVIDE TERMINATION PER DETAIL 2.9700.
- 4 PROVIDE PVC DRAIN PIPES FROM THE ICE MACHINE TO THE FLOOR SINK PER THE MANUFACTURER'S INSTALLATION INSTRUCTIONS. PROVIDE A CODE-APPROVED AIR GAP AT THE DISCHARGE TO THE FLOOR SINK. SECURE ICE MAKER DRAIN PIPES TO THE BOTTOM OF THE ICE MAKER.
- 5 PROVIDE DRAIN LINES FROM THE FOOD PREP SINK TO THE FLOOR SINK. PROVIDE AN AIR GAP AT THE DISCHARGE TO THE FLOOR SINK.
- 6 PROVIDE A 2" VENT THROUGH THE ROOF PER DETAIL 2.9700.
- 7 CONNECT TO EXISTING 4" GREASE WASTE LINE LEADING TO EXISTING 1000 GALLON INTERCEPTOR.
- 8 CONNECT TO EXISTING 4" SANITARY SEWER.
- 9 PROVIDE 3/4" HALLWAY DRAIN FROM HOT FOOD TABLE TO THE FLOOR SINK. DRAIN THROUGH AN AIR GAP.
- 10 PROVIDE QUALITY COPPER DRAIN LINES FROM THE FRY GRATE DRAIN AND THE SOGA MACHINE DRAIN TO THE FLOOR SINK. DRAIN THROUGH AN AIR GAP. HOLD TEA TRAY DRAIN AS HIGH AS POSSIBLE AND SECURE TO STRUCTURE BELOW THE COUNTER. COUNTERTOP.
- 11 TRIM TRAY DRAIN INTO THE MANUFACTURER'S INSTALLATION INSTRUCTIONS PRIOR TO INSTALLATION SO THAT GRATE FITS WITHOUT GAPS. INSTALL TRAY DRAIN WITH SLIGHT POSITIVE SLOPE TOWARD THE DRAIN CONNECTION TO AVOID STANDING WATER IN TRAY DRAIN.
- 12 DO NOT PROVIDE WALL CLEANOUTS ON THE OR PUBLIC VISIBLE WALLS. IF A WALL CLEANOUT IS REQUIRED ON THIS SURFACE COORDINATE THE EXACT LOCATION WITH CHIPOTLE'S CONSTRUCTION MANAGER.
- 13 PROVIDE DIRECT WASTE AND CONDENSATE DRAIN FROM FIXTURES OTHER THAN SINKS. GRAB CONCEALED IN THE WALL AS SHOWN IN DETAIL 2.9700.
- 14 PROVIDE DRAIN FROM WATER FILTER-BYPASS TO FLOOR DRAIN CONCEALED IN THE WALL AS SHOWN IN DETAIL 2.9700.
- 15 PROVIDE TRAY DRAIN AS SHOWN IN DETAIL 2.9700.
- 16 METAL DRAIN HOSE FURNISHED WITH ICE MACHINES FROM DRAIN MACHINE OUTLET TO FLOOR SINK. HOLD DRAIN HOSE TIGHT TO WALL AND SECURE TO A COMP SINK DRAIN TO MAINTAIN AN AIR GAP AT THE FLOOR SINK.
- 17 PROVIDE CONDENSATE TRAP ON RTU PER DETAIL 2.9700.
- 18 PROVIDE 3/4" PVC DRAIN LINES FROM THE ICE MACHINE TO THE FLOOR SINK PER THE MANUFACTURER'S INSTALLATION INSTRUCTIONS. PROVIDE A CODE-APPROVED AIR GAP AT THE DISCHARGE TO THE FLOOR SINK.
- 20 SEE DETAIL 2.9700 FOR DRAIN TEA TRAY, ICE MAKER, AND SOGA MACHINE TO FUNNEL DRAIN.



SANITARY WASTE & VENT DIAGRAM



SANITARY WASTE & VENT PLAN

NATIONAL
 4035 Truman Blvd, Suite 290
 Hilliard, Ohio 43026
 Phone: (614) 751-6610
 Fax: (614) 551-6340
 Contact: Andy Janosik
 (614) 328-2028
 ajanosik@nationalengineering.com

FOR CONSTRUCTION

THIS PLAN IS THE PROPERTY OF NATIONAL ENGINEERING. IT IS TO BE USED ONLY FOR THE PROJECT AND SITE SPECIFICALLY IDENTIFIED HEREON. NO PART OF THIS PLAN IS TO BE REPRODUCED OR TRANSMITTED IN ANY FORM OR BY ANY MEANS, ELECTRONIC OR MECHANICAL, INCLUDING PHOTOCOPYING, RECORDING, OR BY ANY INFORMATION STORAGE AND RETRIEVAL SYSTEM, WITHOUT THE WRITTEN PERMISSION OF NATIONAL ENGINEERING.

CHIPOTLE MEXICAN GRILL

OWNER: NATIONAL, INC.
 4035 TRUMAN BLVD., SUITE 290
 HILLIARD, OHIO 43026
 CONTACT: ANDY JANOSIK
 (614) 328-2028

STORE NO.: 5397
MORGANTON, NC
 1219 BURKEMONT AVE
 MORGANTON, NC 28655

DATE	REVISION
08.19.2014	ISSUE
08.29.2014	CONSTRUCTION SET

DATE	CREATED
08.19.2014	AJJ
08.29.2014	AJJ

PROJECT NO.	280304
-------------	--------

PLUMBING PLAN WASTE & VENT

P110

PLUMBING FIXTURE SCHEDULE

TAG	FIXTURE	FURNISHED BY	INSTALLED BY	MANUFACTURER	MODEL	DESCRIPTION	QUANTITY	CONNECTION SIZES			FIXTURE UNITS (EACH)				FIXTURE UNITS (TOTAL)					
								CW	HW	WASTE	CW	HW	TOTAL	SAN	CW	HW	TOTAL	SAN		
BFP-1	BP BACKFLOW PREVENTER	GC	GC	CONBRAD	64U-200-121	LEAD FREE REDUCED PRESSURE PRINCIPLE BACKFLOW PREVENTER WITH AUTOMATIC DISAPPOINTMENT RELIEF VALVE	1	1/2"			1			1			1	0	1	0
BFP-2	BP BACKFLOW PREVENTER	GC	GC	CONBRAD	64U-207	LEAD FREE REDUCED PRESSURE PRINCIPLE BACKFLOW PREVENTER WITH AUTOMATIC DISAPPOINTMENT RELIEF VALVE AND AIR GAP FITTING	1	1/2"			1			1			1	0	0	0
DM-1	DIEN SPENDING MACHINE (PUMPED OUTLET)	KES	GC	FURNISHED BY KES		CHEMICAL SANITIZER DISPENSING MACHINE WITH INTERNAL ELECTRIC BOOSTER HEATER AND PUMPED OUTLET	1		3/4"	3/4"	0	1	1	0	0	1	1	0	1	0
ET-1	EXPANSION TANK	GC	GC	AMTROL	ET-5	5 GALLON CAPACITY	1	3/4"			0	0	0	0	0	0	0	0	0	0
FO-1	FLOOR CLEANOUT (4")	GC	GC	BDUX CHIEF	811-4PH	ON GRADE ADJUSTABLE CLEANOUT WITH INTERNAL THREADED 1/2" ANNOT PLUG AND FLOOR NICKEL BRASS RING AND COVER OR APPROVED EQUAL WITH INTERNAL THREADED CLEANOUT PLUG	4		4"		0	0	0	0	0	0	0	0	0	
FD-1	FLOOR DRAIN	GC	GC	BDUX CHIEF	811-2PH	400'S SIZE FLOOR DRAIN, ROUND POLISHED METAL RING AND STRAINER	6		2"		0	1	0	0	0	0	0	0	0	
FD-1	FLOOR DRAIN	GC	GC	JAY B. SMITH	1032T	BUNNELL DRAIN WITH CAST BRONZE BODY AND THREADED OUTLET	1		2"	0	0	0	2	0	0	0	0	0		
FS-1	FLOOR SINK	GC	GC	BDUX CHIEF	811-1PLD	1/2" DEPTH PVC FLOOR SINK WITH ALUMINUM COME BOTTOM STRAINER AND OPEN HUNG PVC GRATE	7		2"		0	5	0	0	0	0	0	0	0	
HB-1	HOSE BIBB	KES	GC	IBS	B-23431-XX	COMMERCIAL QUALITY HOT & COLD MILING WALL MOUNTED SUPPLY HANGERS WITH INTEGRAL SHUT OFF STOP AND CHECK VALVE	2	1/2"	1/2"		1.5	1.5	2	0	3	3	4	0		
HB-2	HOSE BIBB	KES	GC	IBS	B-0730	WALL FAUCET WITH 1/2" FEMALE INLET AND 3/4" GARDEN HOSE THREADED OUTLET	1	1/2"			1.5	0	1.5	0	1.5	0	1.5	0		
HS-1A	RESTROOM HAND SINK	GC	GC	AMERICAN STANDARD	484-205EC	ADA ACCESSIBLE WALL MOUNTED PORCELAIN LAVATORY PROVIDE FLUSH TRIP (1) (2) (3) (4) FOR BACK TO BACK APPLICATIONS CONCEALED BRACKET (5) (6) (7) (8) APPROVED ALTERNATE KOHLER K-2084	2	0"	0"	2"	0	0	0	1	0	0	0	0		
HS-1B	RESTROOM HAND SINK FAUCET	KES	GC	FURNISHED BY KES		PLUG-IN AUTOMATIC FAUCET WITH 0.5 GPM REDUCER AND THERMOSTATIC MIXING VALVE, ADJUST FAUCET CONTROLS FOR 10 SECONDS SHOUT DELAY AND 30 SECONDS DELAY	2	1/2"	3/2"	0"	1.5	1.5	2	0	3	3	4	0		
HS-2	KITCHEN HAND SINK	KES	GC	FURNISHED BY KES		STAINLESS STEEL SINK WITH WALL MOUNTING BRACKET AND BACKLASH MOUNTED FAUCET WITH SWIVEL GOOSENECK	4	1/2"	1/2"	2"	1.5	1.5	2	1	6	0	8	4		
IM-1	ICE MAKER - BSH	KES	GC	SEE ARCH		BACK OF MODEL ICE MAKER WITH RIN (STANDARD CAPACITY REMOVE AIR COOLERS)	1	1/2"			1	0	1	0	1	0	1	0		
IM-2	ICE MAKER - SDA	KES	KES	SEE ARCH		SOBA MACHINE MOUNTED ICE MAKER (EXTERNAL AIR COOLERS)	1	1/2"			1		1		1	0	1	0		
IM-3	ICE MAKER - SDA	KES	KES	SEE ARCH		SOBA MACHINE MOUNTED ICE MAKER (INTERNAL AIR COOLERS)	1	1/2"			1		1		1	0	1	0		
MB-1A	MOP BASIN	GC	GC	FIAT	M82424	PROVIDE 24" X 48" X 10" MOLDED STONE MOP BASIN, RETAIL MOP BASIN RIN SIDE OF BASIN SO THERE ARE NO JOINTS BETWEEN THE MOP BASIN AND THE WALL	1	0"	0"	3"	0	0	0	3	0	0	0	0		
MB-1B	MOP BASIN FAUCET	KES	GC	FURNISHED BY KES		BRONZE SINK FAUCET WITH BLAT IN STEPS, LEVER HANDLES, AND WALL BRACK	1	1/2"	3/2"	0"	2.25	2.25	3	0	2.25	2.25	3	0		
PF-1	POT FILLER	KES	GC	FURNISHED BY KES		WALL MOUNTED POT FILLER W/ SELF-CLOSING FILLER VALVE AND 1/2" FEM FEMALE INLET	1	1/2"			1.5	0	1.5		1.5	0	1.5	0		
PH-1	PREP SINK	GC	GC	HOFFMAYER	3111R	AUTOMATIC DRAINING, FREEZELESS ROOF HYDRANT WITH ANTI-SIPHON VALVE AND BREAKER HOIST (PART NUMBER 3001) 1/2" (2) (3) (4) (5) (6) (7) (8) (9) (10) (11) (12) (13) (14) (15) (16) (17) (18) (19) (20) (21) (22) (23) (24) (25) (26) (27) (28) (29) (30) (31) (32) (33) (34) (35) (36) (37) (38) (39) (40) (41) (42) (43) (44) (45) (46) (47) (48) (49) (50) (51) (52) (53) (54) (55) (56) (57) (58) (59) (60) (61) (62) (63) (64) (65) (66) (67) (68) (69) (70) (71) (72) (73) (74) (75) (76) (77) (78) (79) (80) (81) (82) (83) (84) (85) (86) (87) (88) (89) (90) (91) (92) (93) (94) (95) (96) (97) (98) (99) (100) (101) (102) (103) (104) (105) (106) (107) (108) (109) (110) (111) (112) (113) (114) (115) (116) (117) (118) (119) (120) (121) (122) (123) (124) (125) (126) (127) (128) (129) (130) (131) (132) (133) (134) (135) (136) (137) (138) (139) (140) (141) (142) (143) (144) (145) (146) (147) (148) (149) (150) (151) (152) (153) (154) (155) (156) (157) (158) (159) (160) (161) (162) (163) (164) (165) (166) (167) (168) (169) (170) (171) (172) (173) (174) (175) (176) (177) (178) (179) (180) (181) (182) (183) (184) (185) (186) (187) (188) (189) (190) (191) (192) (193) (194) (195) (196) (197) (198) (199) (200) (201) (202) (203) (204) (205) (206) (207) (208) (209) (210) (211) (212) (213) (214) (215) (216) (217) (218) (219) (220) (221) (222) (223) (224) (225) (226) (227) (228) (229) (230) (231) (232) (233) (234) (235) (236) (237) (238) (239) (240) (241) (242) (243) (244) (245) (246) (247) (248) (249) (250) (251) (252) (253) (254) (255) (256) (257) (258) (259) (260) (261) (262) (263) (264) (265) (266) (267) (268) (269) (270) (271) (272) (273) (274) (275) (276) (277) (278) (279) (280) (281) (282) (283) (284) (285) (286) (287) (288) (289) (290) (291) (292) (293) (294) (295) (296) (297) (298) (299) (300) (301) (302) (303) (304) (305) (306) (307) (308) (309) (310) (311) (312) (313) (314) (315) (316) (317) (318) (319) (320) (321) (322) (323) (324) (325) (326) (327) (328) (329) (330) (331) (332) (333) (334) (335) (336) (337) (338) (339) (340) (341) (342) (343) (344) (345) (346) (347) (348) (349) (350) (351) (352) (353) (354) (355) (356) (357) (358) (359) (360) (361) (362) (363) (364) (365) (366) (367) (368) (369) (370) (371) (372) (373) (374) (375) (376) (377) (378) (379) (380) (381) (382) (383) (384) (385) (386) (387) (388) (389) (390) (391) (392) (393) (394) (395) (396) (397) (398) (399) (400) (401) (402) (403) (404) (405) (406) (407) (408) (409) (410) (411) (412) (413) (414) (415) (416) (417) (418) (419) (420) (421) (422) (423) (424) (425) (426) (427) (428) (429) (430) (431) (432) (433) (434) (435) (436) (437) (438) (439) (440) (441) (442) (443) (444) (445) (446) (447) (448) (449) (450) (451) (452) (453) (454) (455) (456) (457) (458) (459) (460) (461) (462) (463) (464) (465) (466) (467) (468) (469) (470) (471) (472) (473) (474) (475) (476) (477) (478) (479) (480) (481) (482) (483) (484) (485) (486) (487) (488) (489) (490) (491) (492) (493) (494) (495) (496) (497) (498) (499) (500) (501) (502) (503) (504) (505) (506) (507) (508) (509) (510) (511) (512) (513) (514) (515) (516) (517) (518) (519) (520) (521) (522) (523) (524) (525) (526) (527) (528) (529) (530) (531) (532) (533) (534) (535) (536) (537) (538) (539) (540) (541) (542) (543) (544) (545) (546) (547) (548) (549) (550) (551) (552) (553) (554) (555) (556) (557) (558) (559) (560) (561) (562) (563) (564) (565) (566) (567) (568) (569) (570) (571) (572) (573) (574) (575) (576) (577) (578) (579) (580) (581) (582) (583) (584) (585) (586) (587) (588) (589) (590) (591) (592) (593) (594) (595) (596) (597) (598) (599) (600) (601) (602) (603) (604) (605) (606) (607) (608) (609) (610) (611) (612) (613) (614) (615) (616) (617) (618) (619) (620) (621) (622) (623) (624) (625) (626) (627) (628) (629) (630) (631) (632) (633) (634) (635) (636) (637) (638) (639) (640) (641) (642) (643) (644) (645) (646) (647) (648) (649) (650) (651) (652) (653) (654) (655) (656) (657) (658) (659) (660) (661) (662) (663) (664) (665) (666) (667) (668) (669) (670) (671) (672) (673) (674) (675) (676) (677) (678) (679) (680) (681) (682) (683) (684) (685) (686) (687) (688) (689) (690) (691) (692) (693) (694) (695) (696) (697) (698) (699) (700) (701) (702) (703) (704) (705) (706) (707) (708) (709) (710) (711) (712) (713) (714) (715) (716) (717) (718) (719) (720) (721) (722) (723) (724) (725) (726) (727) (728) (729) (730) (731) (732) (733) (734) (735) (736) (737) (738) (739) (740) (741) (742) (743) (744) (745) (746) (747) (748) (749) (750) (751) (752) (753) (754) (755) (756) (757) (758) (759) (760) (761) (762) (763) (764) (765) (766) (767) (768) (769) (770) (771) (772) (773) (774) (775) (776) (777) (778) (779) (780) (781) (782) (783) (784) (785) (786) (787) (788) (789) (790) (791) (792) (793) (794) (795) (796) (797) (798) (799) (800) (801) (802) (803) (804) (805) (806) (807) (808) (809) (810) (811) (812) (813) (814) (815) (816) (817) (818) (819) (820) (821) (822) (823) (824) (825) (826) (827) (828) (829) (830) (831) (832) (833) (834) (835) (836) (837) (838) (839) (840) (841) (842) (843) (844) (845) (846) (847) (848) (849) (850) (851) (852) (853) (854) (855) (856) (857) (858) (859) (860) (861) (862) (863) (864) (865) (866) (867) (868) (869) (870) (871) (872) (873) (874) (875) (876) (877) (878) (879) (880) (881) (882) (883) (884) (885) (886) (887) (888) (889) (890) (891) (892) (893) (894) (895) (896) (897) (898) (899) (900) (901) (902) (903) (904) (905) (906) (907) (908) (909) (910) (911) (912) (913) (914) (915) (916) (917) (918) (919) (920) (921) (922) (923) (924) (925) (926) (927) (928) (929) (930) (931) (932) (933) (934) (935) (936) (937) (938) (939) (940) (941) (942) (943) (944) (945) (946) (947) (948) (949) (950) (951) (952) (953) (954) (955) (956) (957) (958) (959) (960) (961) (962) (963) (964) (965) (966) (967) (968) (969) (970) (971) (972) (973) (974) (975) (976) (977) (978) (979) (980) (981) (982) (983) (984) (985) (986) (987) (988) (989) (990) (991) (992) (993) (994) (995) (996) (997) (998) (999) (1000) (1001) (1002) (1003) (1004) (1005) (1006) (1007) (1008) (1009) (1010) (1011) (1012) (1013) (1014) (1015) (1016) (1017) (1018) (1019) (1020) (1021) (1022) (1023) (1024) (1025) (1026) (1027) (1028) (1029) (1030) (1031) (1032) (1033) (1034) (1035) (1036) (1037) (1038) (1039) (1040) (1041) (1042) (1043) (1044) (1045) (1046) (1047) (1048) (1049) (1050) (1051) (1052) (1053) (1054) (1055) (1056) (1057) (1058) (1059) (1060) (1061) (1062) (1063) (1064) (1065) (1066) (1067) (1068) (1069) (1070) (1071) (1072) (1073) (1074) (1075) (1076) (1077) (1078) (1079) (1080) (1081) (1082) (1083) (1084) (1085) (1086) (1087) (1088) (1089) (1090) (1091) (1092) (1093) (1094) (1095) (1096) (1097) (1098) (1099) (1100) (1101) (1102) (1103) (1104) (1105) (1106) (1107) (1108) (1109) (1110) (1111) (1112) (1113) (1114) (1115) (1116) (1117) (1118) (1119) (1120) (1121) (1122) (1123) (1124) (1125) (1126) (1127) (1128) (1129) (1130) (1131) (1132) (1133) (1134) (1135) (1136) (1137) (1138) (1139) (1140) (1141) (1142) (1143) (1144) (1145) (1146) (1147) (1148) (1149) (1150) (1151) (1152) (1153) (1154) (1155) (1156) (1157) (1158) (1159) (1160) (1161) (1162) (1163) (1164) (1165) (1166) (1167) (1168) (1169) (1170) (1171) (1172) (1173) (1174) (1175) (1176) (1177) (1178) (1179) (1180) (1181) (1182) (1183) (1184) (1185) (1186) (1187) (1188) (1189) (1190) (1191) (1192) (1193) (1194) (1195) (1196) (1197) (1198) (1199) (1200) (1201) (1202) (1203) (1204) (1205) (1206) (1207) (1208) (1209) (1210) (1211) (1212) (1213) (1214) (1215) (1216) (1217) (1218) (1219) (1220) (1221) (1222) (1223) (1224) (1225) (1226) (1227) (1228) (1229) (1230) (1231) (1232) (1233) (1234) (1235) (1236) (1237) (1238) (1239) (1240) (1241) (1242) (1243) (1244) (1245) (1246) (1247) (1248) (1249) (1250) (1251) (1252) (1253) (1254) (1255) (1256) (1257) (1258) (1259) (1260) (1261) (1262) (1263) (1264) (1265) (1266) (1267) (1268) (1269) (1270) (1271) (1272) (1273) (1274) (1275) (1276) (1277) (1278) (1279) (1280) (1281) (1282) (1283) (1284) (1285) (1286) (1287) (1288) (1289) (1290) (1291) (1292) (1293) (1294) (1295) (1296) (1297) (1298) (1299) (1300) (1301) (1302) (1303) (1304) (1305) (1306) (1307) (1308) (1309) (1310) (1311) (1312) (1313) (1314) (1315) (1316) (1317) (1318) (1319) (1320) (1321) (1322) (1323) (1324) (1325) (1326) (1327) (1328) (1329) (1330) (1331) (1332) (1333) (1334) (1335) (1336) (1337) (1338) (1339) (1340) (1341) (1342) (1343) (1344) (1345) (1346) (1347) (1348) (1349) (1350) (1351) (1352) (1353) (1354) (1355) (1356) (1357) (1358) (1359) (1360) (1361) (1362) (1363) (1364) (1365) (1366) (1367) (1368) (1369) (1370) (1371) (1372) (1373) (1374) (1375) (1376) (1377) (1378) (1379) (1380) (1381) (1382) (1383) (1384) (1385) (1386) (1387) (1388) (1389) (1390) (1391) (1392) (1393) (1394) (1395) (1396) (1397) (1398) (1399) (1400) (1401) (1402) (1403) (1404) (1405) (1406) (1407) (1408) (1409) (1410) (1411) (1412) (1413) (1414) (1415) (1416) (1417) (1418) (1419) (1420) (1421) (1422) (1423) (1424) (1425) (1426) (1427) (1428) (1429) (1430) (1431) (1432) (1433) (1434) (1435) (1436) (1437) (1438) (1439) (1440) (1441) (1442) (1443) (1444) (1445) (1446) (1447) (1448) (1449) (1450) (1451) (1452) (1453) (1454) (1455) (1456) (1457) (1458) (1459) (1460) (1461) (1462) (1463) (1464) (1465) (1466) (1467) (1468) (1469) (1470) (1471) (1472) (1473) (1474) (1475) (1476) (1477) (1478) (1479) (1480) (1481) (1482) (1483) (1484) (1485) (1486) (1487) (1488) (1489) (1490) (1491) (1492) (1493) (1494) (1495) (1496) (1497) (1498) (1499) (1500) (1501) (1502) (1503) (1504) (1505) (1506) (1507) (1508) (1509) (1510) (1511) (1512) (1513) (1514) (1515) (1516) (1517) (1518) (1519) (1520) (1521) (1522) (1523) (1524) (1525) (1526) (1527) (1528) (1529) (1530) (1531) (1532) (1533) (1534) (1535) (1536) (1537) (1538) (1539) (1540) (1541) (1542) (1543) (1544) (1545) (1546) (1547) (1548) (1549) (1550) (1551) (1552) (1553) (1554) (1555) (1556) (1557) (1558) (1559) (1560) (1561) (1562) (1563) (1564) (1565) (1566) (1567) (1568) (1569) (1570) (1571) (1572) (1573) (1574) (1575) (1576) (1577) (1578) (1579) (1580) (1581) (1582) (1583) (1584) (1585) (1586) (1587) (1588) (1589) (1590) (1591) (1592) (1593)														

SECTION 1610 - TEMPORARY & PERMANENT ELECTRICAL SERVICE

- 1.1 GENERAL
A. Section Includes
1. Temporary power distribution system
2. Temporary lighting
3. Temporary power and lighting for construction
4. Temporary power and lighting for permanent installation
5. Temporary power and lighting for permanent installation

- 1.2 MATERIALS
A. Temporary Power Distribution System
1. Temporary power distribution system
2. Temporary power and lighting for construction
3. Temporary power and lighting for permanent installation
4. Temporary power and lighting for permanent installation

- 1.3 INSTALLATION
A. Temporary Power Distribution System
1. Temporary power distribution system
2. Temporary power and lighting for construction
3. Temporary power and lighting for permanent installation
4. Temporary power and lighting for permanent installation

- 1.4 MAINTENANCE
A. Temporary Power Distribution System
1. Temporary power distribution system
2. Temporary power and lighting for construction
3. Temporary power and lighting for permanent installation
4. Temporary power and lighting for permanent installation

SECTION 1620 - LIGHTING AND SIGNING

- 1.1 GENERAL
A. Section Includes
1. Temporary power distribution system
2. Temporary lighting
3. Temporary power and lighting for construction
4. Temporary power and lighting for permanent installation
5. Temporary power and lighting for permanent installation

- 1.2 MATERIALS
A. Temporary Power Distribution System
1. Temporary power distribution system
2. Temporary power and lighting for construction
3. Temporary power and lighting for permanent installation
4. Temporary power and lighting for permanent installation

- 1.3 INSTALLATION
A. Temporary Power Distribution System
1. Temporary power distribution system
2. Temporary power and lighting for construction
3. Temporary power and lighting for permanent installation
4. Temporary power and lighting for permanent installation

- 1.4 MAINTENANCE
A. Temporary Power Distribution System
1. Temporary power distribution system
2. Temporary power and lighting for construction
3. Temporary power and lighting for permanent installation
4. Temporary power and lighting for permanent installation

SECTION 1630 - WIRING METHODS

- 1.1 GENERAL
A. Section Includes
1. Temporary power distribution system
2. Temporary lighting
3. Temporary power and lighting for construction
4. Temporary power and lighting for permanent installation
5. Temporary power and lighting for permanent installation

- 1.2 MATERIALS
A. Temporary Power Distribution System
1. Temporary power distribution system
2. Temporary power and lighting for construction
3. Temporary power and lighting for permanent installation
4. Temporary power and lighting for permanent installation

- 1.3 INSTALLATION
A. Temporary Power Distribution System
1. Temporary power distribution system
2. Temporary power and lighting for construction
3. Temporary power and lighting for permanent installation
4. Temporary power and lighting for permanent installation

- 1.4 MAINTENANCE
A. Temporary Power Distribution System
1. Temporary power distribution system
2. Temporary power and lighting for construction
3. Temporary power and lighting for permanent installation
4. Temporary power and lighting for permanent installation

SECTION 1640 - WIRING DEVICES

- 1.1 GENERAL
A. Section Includes
1. Temporary power distribution system
2. Temporary lighting
3. Temporary power and lighting for construction
4. Temporary power and lighting for permanent installation
5. Temporary power and lighting for permanent installation

- 1.2 MATERIALS
A. Temporary Power Distribution System
1. Temporary power distribution system
2. Temporary power and lighting for construction
3. Temporary power and lighting for permanent installation
4. Temporary power and lighting for permanent installation

- 1.3 INSTALLATION
A. Temporary Power Distribution System
1. Temporary power distribution system
2. Temporary power and lighting for construction
3. Temporary power and lighting for permanent installation
4. Temporary power and lighting for permanent installation

- 1.4 MAINTENANCE
A. Temporary Power Distribution System
1. Temporary power distribution system
2. Temporary power and lighting for construction
3. Temporary power and lighting for permanent installation
4. Temporary power and lighting for permanent installation

SECTION 1650 - HARDWARE

- 1.1 GENERAL
A. Section Includes
1. Temporary power distribution system
2. Temporary lighting
3. Temporary power and lighting for construction
4. Temporary power and lighting for permanent installation
5. Temporary power and lighting for permanent installation

- 1.2 MATERIALS
A. Temporary Power Distribution System
1. Temporary power distribution system
2. Temporary power and lighting for construction
3. Temporary power and lighting for permanent installation
4. Temporary power and lighting for permanent installation

- 1.3 INSTALLATION
A. Temporary Power Distribution System
1. Temporary power distribution system
2. Temporary power and lighting for construction
3. Temporary power and lighting for permanent installation
4. Temporary power and lighting for permanent installation

- 1.4 MAINTENANCE
A. Temporary Power Distribution System
1. Temporary power distribution system
2. Temporary power and lighting for construction
3. Temporary power and lighting for permanent installation
4. Temporary power and lighting for permanent installation

SECTION 1660 - ELECTRICAL PANELS

- 1.1 GENERAL
A. Section Includes
1. Temporary power distribution system
2. Temporary lighting
3. Temporary power and lighting for construction
4. Temporary power and lighting for permanent installation
5. Temporary power and lighting for permanent installation

- 1.2 MATERIALS
A. Temporary Power Distribution System
1. Temporary power distribution system
2. Temporary power and lighting for construction
3. Temporary power and lighting for permanent installation
4. Temporary power and lighting for permanent installation

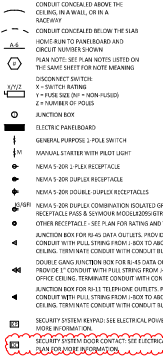
- 1.3 INSTALLATION
A. Temporary Power Distribution System
1. Temporary power distribution system
2. Temporary power and lighting for construction
3. Temporary power and lighting for permanent installation
4. Temporary power and lighting for permanent installation

- 1.4 MAINTENANCE
A. Temporary Power Distribution System
1. Temporary power distribution system
2. Temporary power and lighting for construction
3. Temporary power and lighting for permanent installation
4. Temporary power and lighting for permanent installation

ELECTRICAL MATERIAL SCHEDULE

Table with 3 columns: CATEGORY, APPLICATION, ALLOWABLE MATERIAL. Rows include CONDUCTORS, CONDUITS, and WIRING DEVICES.

ELECTRICAL SYMBOLS



ELECTRICAL GENERAL NOTES

- 1. GENERAL NOTES APPLY TO ELECTRICAL SYSTEMS
2. ELECTRICAL WORK SHALL BE DONE IN ACCORDANCE WITH THE ELECTRICAL CODE AND IN ACCORDANCE WITH THE AUTHORITY HAVING JURISDICTION, SEE ARCHITECTURAL SHEETS FOR THE PREVAILING CODES
3. WIRING SHALL BE DONE IN ACCORDANCE WITH THE NATIONAL ELECTRICAL CODE
4. INDIVIDUAL CONDUIT RUNS SHALL NOT BE CONSOLIDATED
5. ALL ELECTRICAL WORK SHALL BE DONE IN ACCORDANCE WITH THE NATIONAL ELECTRICAL CODE
6. ALL ELECTRICAL WORK SHALL BE DONE IN ACCORDANCE WITH THE NATIONAL ELECTRICAL CODE
7. ALL ELECTRICAL WORK SHALL BE DONE IN ACCORDANCE WITH THE NATIONAL ELECTRICAL CODE
8. ALL ELECTRICAL WORK SHALL BE DONE IN ACCORDANCE WITH THE NATIONAL ELECTRICAL CODE
9. ALL ELECTRICAL WORK SHALL BE DONE IN ACCORDANCE WITH THE NATIONAL ELECTRICAL CODE
10. ALL ELECTRICAL WORK SHALL BE DONE IN ACCORDANCE WITH THE NATIONAL ELECTRICAL CODE

ELECTRICAL ABBREVIATIONS

Table listing electrical abbreviations and their corresponding full names, such as CONDUIT, RACEWAY, and WIRING DEVICES.



4635 Truman Blvd., Suite 290
Morgantown, Ohio 43026
Phone: (614) 751-6610
Fax: (614) 552-6240
Contact: Andy Janosik
ajanosik@nationselectrical.com



1219 BURKEMONT AVE
MORGANTOWN, NC 28655
STORE NO.: 5397

ELECTRICAL POWER PLAN NOTES

1. ALL VEHICLE DETECTOR LOOP FURNISHED BY SUPPLIER. THE MANUFACTURER'S INSTALLATION INSTRUCTIONS. ALIGN DETECTOR LOOP TO BE CENTERED ON THE PICK-UP WINDOW.
2. CONNECT ANNOUNCE SIGN TO CIRCUIT SHOWN THROUGH THE EXTERIOR LIGHTING CONTACTOR PANEL AS SHOWN IN DETAIL A-41. SEE DETAIL 2/THIS SHEET FOR SITE CONDUITS.
3. PROVIDE EMPTY CONDUIT WITH PULL STRING TO CLEARANCE BAR. SEE DETAIL 2/THIS SHEET FOR SITE CONDUITS.
4. CONNECT ANNOUNCE SIGN TO CIRCUIT SHOWN THROUGH THE EXTERIOR LIGHTING CONTACTOR PANEL AS SHOWN IN DETAIL A-41. SEE DETAIL 2/THIS SHEET FOR SITE CONDUITS.
5. EXISTING 1" SPARE LOW VOLTAGE CONDUIT. SEE DETAIL 2/THIS SHEET FOR MORE INFORMATION.
6. EXISTING 1" SPARE LINE VOLTAGE CONDUIT. SEE DETAIL 2/THIS SHEET FOR MORE INFORMATION.
7. EXISTING INTERIOR 1" BOXES AT 11'-0" AFF FOR LINE VOLTAGE AND LOW VOLTAGE SITE WIRING. SEE DETAIL 2/THIS SHEET FOR MORE INFORMATION.

GENERAL NOTES

1. ALL WORK SHALL BE DONE IN ACCORDANCE WITH THE REQUIREMENTS OF THE AIA.

2. CONDUIT SHALL BE INSTALLED IN ACCORDANCE WITH THE REQUIREMENTS OF THE AIA.

3. CONDUIT SHALL BE INSTALLED IN ACCORDANCE WITH THE REQUIREMENTS OF THE AIA.

4. CONDUIT SHALL BE INSTALLED IN ACCORDANCE WITH THE REQUIREMENTS OF THE AIA.

5. CONDUIT SHALL BE INSTALLED IN ACCORDANCE WITH THE REQUIREMENTS OF THE AIA.

6. CONDUIT SHALL BE INSTALLED IN ACCORDANCE WITH THE REQUIREMENTS OF THE AIA.

7. CONDUIT SHALL BE INSTALLED IN ACCORDANCE WITH THE REQUIREMENTS OF THE AIA.

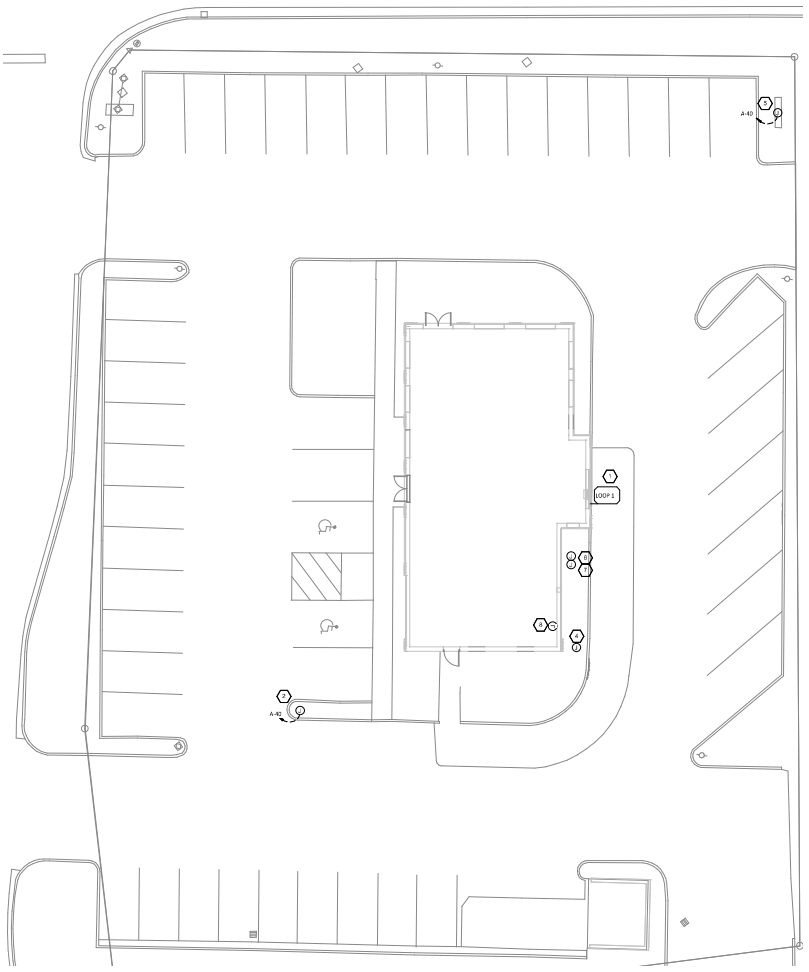
8. CONDUIT SHALL BE INSTALLED IN ACCORDANCE WITH THE REQUIREMENTS OF THE AIA.

9. CONDUIT SHALL BE INSTALLED IN ACCORDANCE WITH THE REQUIREMENTS OF THE AIA.

10. CONDUIT SHALL BE INSTALLED IN ACCORDANCE WITH THE REQUIREMENTS OF THE AIA.

TAG	DESCRIPTION	RESPONSIBILITY
1	VEHICLE DETECTOR LOOP - 4x4" WITH 4 TURNS (SPAN 4x4x4x4) VERIFY LOCATION OF EACH WIRE FROM TOP TO BOTTOM TO ALLOW WIRE TO EACH VEHICLE DETECTOR WITHOUT STRUCKS. SEE SITE PLAN FOR LOCATIONS.	GC
2	1" CONDUIT FROM VEHICLE DETECTOR LOCATION TO LOW VOLTAGE 1 BOX.	GC
3	1" CONDUIT FROM ANNOUNCE SIGN LOCATION TO LINE VOLTAGE 1 BOX. SEE SITE PLAN FOR LOCATION.	GC
4	1" CONDUIT FROM CLEARANCE BAR LOCATION TO LINE VOLTAGE 1 BOX. SEE SITE PLAN FOR LOCATION.	GC
5	1" CONDUIT FROM THE DIRECTIONAL SIGNAGE AND/OR SIGNMOUNT SIGN LOCATIONS TO LINE VOLTAGE 1 BOX. SEE SITE PLAN FOR LOCATIONS AND PLACEMENT OF SIGNAGE LOCATIONS.	GC
6	1" CONDUIT FROM SITE LIGHTING (FURNISHED) TO LINE VOLTAGE 1 BOX. SITE LIGHTING FIXTURES CAN BE GROUND WED.	GC
7	LOW VOLTAGE FROM ANNOUNCE SIGN MOUNT SIGN ON INTERIOR WALL OF BUILDING AT 11'-0" AFF. SEE SITE PLAN FOR LOCATION.	GC
8	1" SPARE CONDUIT FROM LOW VOLTAGE 1 BOX TO LANDSCAPING AREA. SEAL CONDUIT FOR FUTURE USE.	GC
9	1" SPARE CONDUIT FROM LINE VOLTAGE 1 BOX TO LANDSCAPING AREA. SEAL CONDUIT FOR FUTURE USE.	GC

SITE CONDUIT DETAIL



POWER SITE PLAN

NATIONAL
 4030 Truman Blvd, Suite 2500
 Hilliard, Ohio 43026
 Phone: (614) 751-6610
 Fax: (614) 552-6340
 Contact: Andy Janosik (614) 328-2028
 ajanosik@nationalengineering.com

FOR CONSTRUCTION

THIS DOCUMENT IS THE PROPERTY OF NATIONAL ENGINEERING. IT IS TO BE USED ONLY FOR THE PROJECT AND SITE SPECIFICALLY IDENTIFIED HEREIN. IT IS NOT TO BE REPRODUCED, COPIED, OR TRANSMITTED IN ANY FORM OR BY ANY MEANS, ELECTRONIC OR MECHANICAL, INCLUDING PHOTOCOPYING, RECORDING, OR BY ANY INFORMATION STORAGE AND RETRIEVAL SYSTEM, WITHOUT THE WRITTEN PERMISSION OF NATIONAL ENGINEERING.



CHIPOTLE MEXICAN GRILL, INC.
 1219 BURKEMONT AVE
 MORGANTON, NC 28655

STORE NO.: 5397

MORGANTON, NC
 1219 BURKEMONT AVE
 MORGANTON, NC 28655

DATE	DESCRIPTION
08/19/2014	ISSUED FOR PERMIT
08/19/2014	REVISED
08/19/2014	CONSTRUCTION SET

ELECTRICAL SITE POWER PLAN

E115

