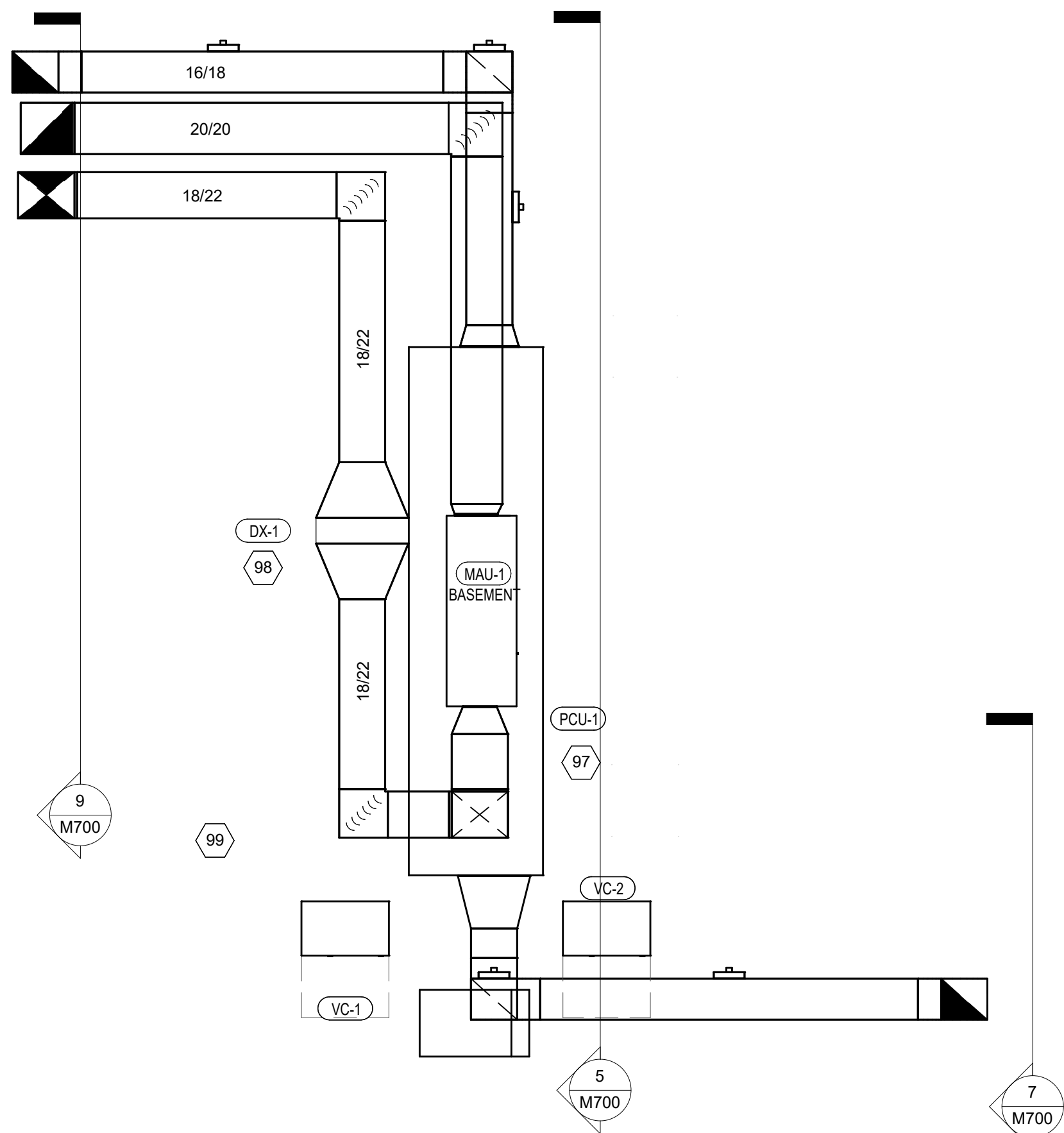
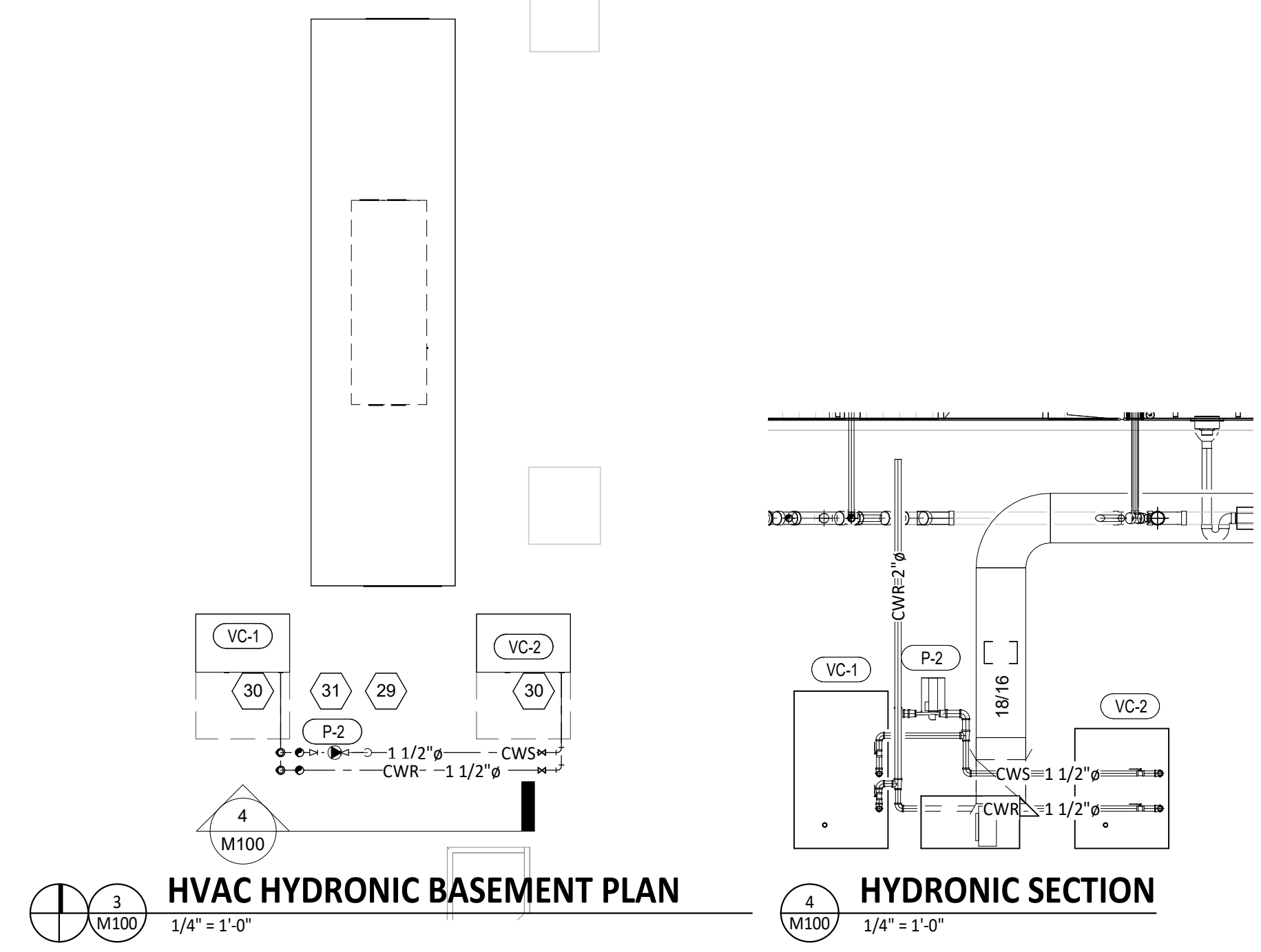


HVAC PLAN NOTES

- 1 SEE ARCHITECTURAL REFLECTED CEILING PLAN FOR CEILING MOUNTED EQUIPMENT LOCATION. TYPICAL.
- 2 PAINT DUCTWORK VISIBLE THROUGH DINING ROOM SUPPLY REGISTERS AND RETURN GRILL BLACK. TYPICAL.
- 3 REFER TO ARCHITECTURAL SHEETS FOR SUPPLY REGISTER ELEVATIONS AND LOCATIONS.
- 4 32/12 FRESH AIR INTAKE ROUTED TO BASEMENT LEVEL.
- 8 18/22 DUCT DN THROUGH FLOOR. TRANSITION TO MAU-1 SUPPLY CONNECTION.
- 9 30/10 DUCT FROM THE REAR OF THE HOOD DN TO 18/16, THROUGH THE FLOOR TO PCU-1 COMPLIANT WITH NFPA 96. PROVIDE RADIUS ELBOWS WITH AN INSIDE RADIUS OF 0.5W AT ELBOWS IN GREASE DUCT.
- 10 8/14 DUCT UP THROUGH 2ND FLOOR TO PLENUM AT THE REAR OF LV-2.
- 13 INSTALL TRANE CONTROLS FURNISHED BY HES AT THIS LOCATION AT 48" AFF. COORDINATE WITH ELECTRICAL SWITCHING IN THIS AREA.
- 14 INSTALL GRIDPOINT ZONE SENSOR MODULE FURNISHED BY TEMS FOR KITCEHN AT THIS LOCATION 60" AFF DIRECTLY TO WALL (NO JUNCTION BOX). COORDINATE LOCATION WITH EQUIPMENT. PROVIDE WIRING AS SHOWN IN DETAIL 8/E710.
- 15 INSTALL GRIDPOINT ZONE SENSOR MODULE FURNISHED BY TEMS FOR DINING RM AT THIS LOCATION 60" AFF DIRECTLY TO WALL (NO JUNCTION BOX). COORDINATE LOCATION WITH EQUIPMENT. PROVIDE WIRING AS SHOWN IN DETAIL 8/E710.
- 16 INSTALL GRIDPOINT SUPPLY PROBE FURNISHED BY TEMS FOR MAU-1 IN THE SUPPLY DUCTWORK UPSTREAM FROM THE FIRST BRANCH CONNECTION. PROVIDE WIRING AS SHOWN IN DETAIL 8/E710.
- 18 INSTALL REMOTE TEMPERATURE SENSOR FOR HOOD HD-1 AT THIS LOCATION 60" AFF. COORDINATE LOCATION WITH EQUIPMENT. PROVIDE (2) #18 G. THERMISTOR CABLE FROM TEMPERATURE SENSOR TO HOOD CONTROL PANEL.
- 19 INSTALL KITCHEN HOOD, HD-1. SUPPORT HOOD PER MANUFACTURER'S INSTALLATION INSTRUCTIONS AND AS DETAILED IN THE ARCHITECTURAL AND STRUCTURAL DRAWINGS. INSTALL HOOD ACCORDING TO THE REQUIREMENTS OF ITS LISTING, IN COMPLIANCE WITH NFPA 96, THE BUILDING CODE, AND AUTHORITIES HAVING JURISDICTION. HOOD SHALL HAVE AN INTEGRAL DUCT COLLAR TEMPERATURE SENSOR TO AUTOMATICALLY ENERGIZE THE EXHAUST AND MAKEUP AIR FANS IF COOKING TEMPERATURES ARE DETECTED. EXHAUST DUCT SYSTEM TO BE WELDED OR FACTORY-MANUFACTURED WATER AND AIR TIGHT. INSTALL CLEANOUTS PER CODE AND AS SHOWN. INSTALL HOOD PER DETAILS 2 AND 4/M700. CHIPOTLE WILL PROVIDE AN INDEPENDENT TESTING AGENCY FOR TESTING THE INTEGRITY OF THE GREASE DUCT SYSTEM.
- 25 PROVIDE AUDIO/VISUAL REMOTE SMOKE DETECTOR ANNUNCIATOR WITH REMOTE KEY OPERATED RESET. WIRE A UNIT BACK TO EACH SMOKE DETECTOR. MOUNT UNIT 60" AFF. TYPICAL.
- 29 REFER TO DETAIL 1/M710 FOR THE INLINE PUMP
- 30 REFER TO DETAIL 2/M710 FOR THE CONNECTIONS OF HYDRONIC PIPING TO THE VRF OUTDOOR UNITS.
- 31 REFER TO DETAIL 1/M710 FOR THE INLINE PUMP
- 97 INSTALL PCU AND MAU PER CAPTIVEAIRE'S INSTRUCTIONS.
- 98 PROVIDE CONDENSATE DRAIN FROM DX-1 TO THE NEAREST FLOOR DRAIN. PROVIDE TRAP IN DRAIN.
- 99 INSTALL REMOTE CONDENSER FOR ICE MACHINE ON ROOF AS DETAILED IN THE ARCHITECTURAL AND STRUCTURAL DRAWINGS. INSTALL REFRIGERANT LINE SET, THERMOSTATIC EXPANSION VALVE, SOLENOID VALVE, TEMPERATURE CONTROL, SIGHT GLASS, FILTER DRIER, PRESSURE CONTROL, LOW AMBIENT CONTROLS, AND WEATHERPROOF HOUSING. TRAP AND SLOPE REFRIGERANT LINES PER MANUFACTURER'S RECOMMENDATIONS. SEAL PIPING PENETRATIONS THROUGH ROOF. INSTALLATION SHALL COMPLY WITH ASHRAE/ANSI STANDARD 15. INSTALL THE REFRIGERANT LINE SET UNDER THE ROOF DECK TO WITHIN 3' OF THE REMOTE CONDENSER. IF REFRIGERANT PIPING TO ICE MAKER IS EXPOSED TO PUBLIC VIEW CONCEAL WITHIN A STAINLESS STEEL SHROUD AS SHOWN IN THE ARCHITECTURAL DRAWINGS. INSTALL RETURN GRILL IN TOP OF JOIST SHELF, FACING THE DECK SO CONCEALED FROM VIEW FROM THE DINING ROOM.

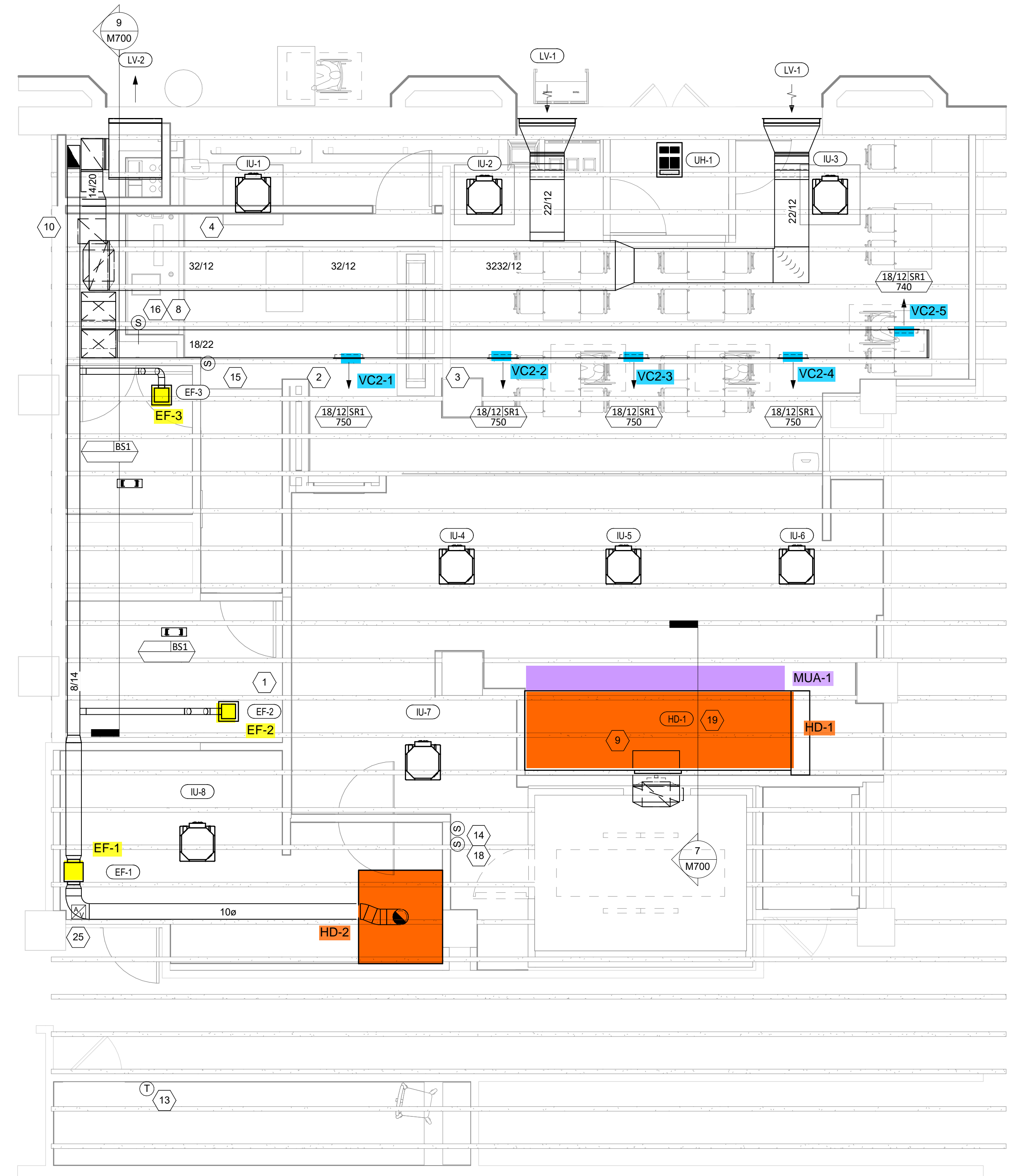


HVAC PARTIAL BASEMENT PLAN
1/4" = 1'-0"



HVAC HYDRONIC BASEMENT PLAN
1/4" = 1'-0"

HYDRONIC SECTION
1/4" = 1'-0"



HVAC FLOOR PLAN
1/4" = 1'-0"

Consultant:
NATIONAL
 ENGINEERING
 4635 Trueman Blvd
 Suite 250
 Hilliard, OH 43026
 PH: 614-751-9610
 FX: 614-552-5240
 Contact:

Seal:

COPYRIGHT 2022
 THIS DRAWING IS AN INSTRUMENT OF SERVICE
 AND AS SUCH REMAINS THE PROPERTY OF
 CHIPOTLE MEXICAN GRILL, INC. PERMISSION FOR
 USE OF THIS DOCUMENT IS LIMITED AND CAN BE
 EXTENDED ONLY BY WRITTEN AGREEMENT WITH
 CHIPOTLE MEXICAN GRILL, INC.



CHIPOTLE MEXICAN GRILL, INC.
 PO BOX 182566
 COLUMBUS, OH 43219-2566
 TELEPHONE: (614) 318-2482
 INTERNET: WWW.CHIPOTLE.COM

STORE NO.: 4272
 "LOYOLA PEARSON"
 109 E. PEARSON STREET
 CHICAGO, IL 60611

Issue Record:

03/29/2021	PERMIT SET
04/14/2021	BID SET

Revisions:

Drawn: RTJ
 Checked: RTJ

Project No:
 2101156

Contents:
 HVAC PLAN

M100