

EX. GAS METER. REFER TO M204 FOR CONTINUATION OF GAS PIPING.

1KW BB HEATER C/W BUILT IN THERMOSTAT BY DIV. 16.

1KW BB HEATER C/W BUILT IN THERMOSTAT BY DIV. 16.

1" FOIL FACED EXTERNAL INSULATION.

10x8 EXHAUST DUCT UP THRU ROOF TO EF-2.

PROVIDE 4" UL6 S636 SCHEDULE 40 PVC COMBUSTION AIR AND EXHAUST FLUE COMMON VENT SYSTEM UP FROM WATER HEATERS AND OFFSET AT HIGH LEVEL UP THROUGH ROOF. REFER TO DETAILS ON M302/M303 AND MANUFACTURER'S INSTALLATION INSTRUCTIONS FOR COMMON VENT SYSTEM ARRANGEMENT AND COMPONENTS.

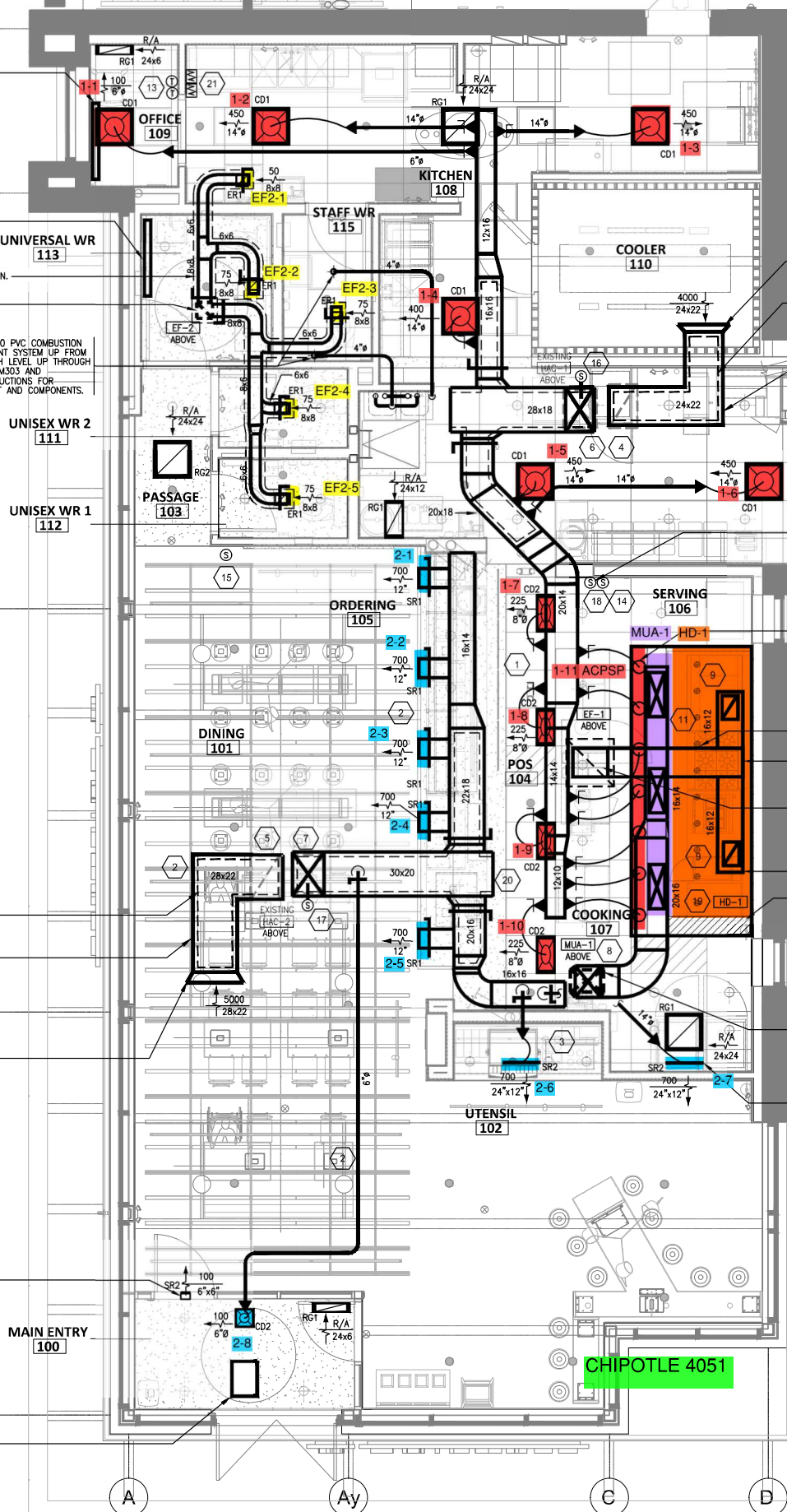
SUPPLY AND RETURN DUCTS TO BE C/W 1" INTERNAL ACOUSTIC INSULATION WHERE SHOWN.

R/A DUCT TO RUN TIGHT TO U/S OF JOISTS.

OPEN ENDED DUCT C/W WIRE MESH OVER OPENING.

6"x6" TRANSFER AIR OPENING AT HIGH LEVEL C/W REGISTER.

3.0 KW RECESSED, CEILING MOUNTED FFH BY DIV.16.



OPEN ENDED DUCT C/W WIRE MESH OVER OPENING.

SUPPLY AND RETURN DUCTS TO BE C/W 1" INTERNAL ACOUSTIC INSULATION WHERE SHOWN.

R/A DUCT TO RUN TIGHT TO U/S OF JOISTS.

SENSOR FOR HD-1 AT 5'-6" AFF

16x22 EXHAUST DUCT UP AND RUN IN JOIST SPACE.

ENTIRE KITCHEN EXHAUST DUCT TO BE 16 GA BLACK STEEL ALL WELDED DUCT PER NFPA 96 STANDARD.

22x18 GREASE EXHAUST DUCT UP TO EXHAUST FAN EF-1 ON ROOF. PROVIDE CLEARANCE REDUCTION SYSTEM AT ROOF PENETRATION IN ACCORDANCE WITH NFPA 96. REFER TO DETAILS ON DWG M302/M303.

16x12 EXHAUST DUCT RUN TIGHT TO U/S OF JOISTS.

FIRE SUPPRESSION CABINET

20x16 F/A DUCT DOWN FROM MUA-1 AND RUN BELOW JOIST.

DIFFUSERS TO BE MOUNTED ON FACE OF BULK HEAD. REFER TO ARCH DRAWINGS.

