

HOOD INFORMATION - Job#3305041

HOOD NO.	TAG	MODEL	LENGTH	MAX. COOKING TEMP.	EXHAUST PLENUM							TOTAL SUPPLY CFM	HOOD CONSTRUCTION	HOOD CONFIG.		
					RISER(S)									END TO END	ROW	
					TOTAL EXH. CFM	WIDTH	LENG.	HEIGHT	DIA.	CFM	VEL.	S.P.				
1	KHD-1	7224 VHB-G-PSP-F-ND	16' 0"	700 Deg.	2800			4"	12"	933	1188	-0.132"	2300	430 SS	ALONE	ALONE
								4"	12"	933	1188	-0.132"				
								4"	12"	933	1188	-0.132"		100%		

PATENT NUMBERS

AC-PSP (United States) - US Patent 7963830 B2
 AC-PSP Wall (Canada) - CA Patent 2820509
 AC-PSP Island (Canada) - CA Patent 2520330

HOOD INFORMATION

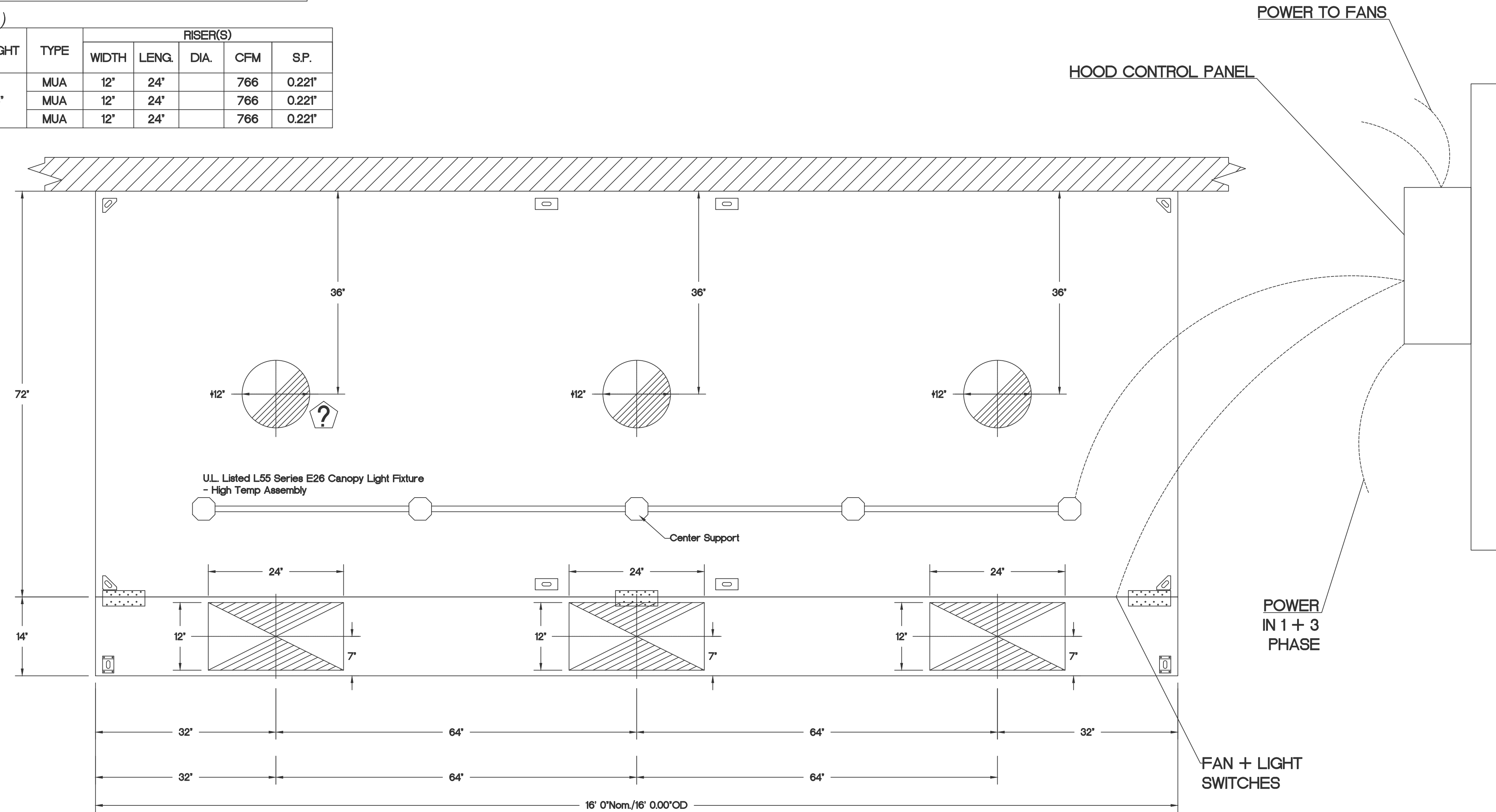
HOOD NO.	TAG	FILTER(S)					LIGHT(S)				UTILITY CABINET(S)				FIRE SYSTEM PIPING	HOOD HANGING WGT	
		TYPE	QTY.	HEIGHT	LENGTH	EFFICIENCY * 7 MICRONS	QTY.	TYPE	WIRE GUARD	LOCATION	SIZE	TYPE	SIZE	ELECTRICAL MODEL #			SWITCHES QUANTITY
1	KHD-1						5	L55 Series E26	NO							NO	651 LBS

HOOD OPTIONS

HOOD NO.	TAG	OPTION
1	KHD-1	FIELD WRAPPER 22.00' High Front, Left, Right BACKSPLASH 80.00' High X 192.00' Long 430 SS Vertical

PERFORATED SUPPLY PLENUM(S)

HOOD NO.	TAG	POS.	LENGTH	WIDTH	HEIGHT	TYPE	RISER(S)				
							WIDTH	LENG.	DIA.	CFM	S.P.
1	KHD-1	Front	192'	14'	6'	MUA	12'	24'		766	0.221'
						MUA	12'	24'		766	0.221'
						MUA	12'	24'		766	0.221'

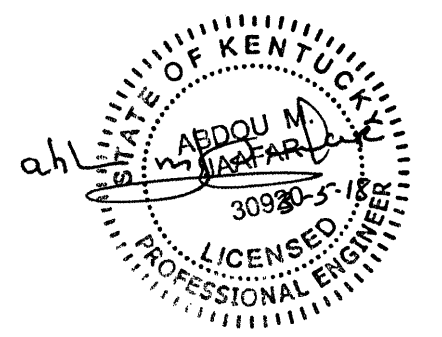


PLAN VIEW - Hood #1 (KHD-1)
 16' 0.00" LONG 7224VHB-G-PSP-F-ND
 NOTE: Additional hanging angles provided for hoods 12' and longer.



JOB Alto's (Northern Kentucky)	
LOCATION COVINGTON, KY, 41011	
DATE 2/13/2018	JOB # 3305041
DWG # 1	DRAWN BY
REV.	SCALE 3/8" = 1'-0"

NOTE:
 THE INFORMATION PRESENTED HERE IS PROVIDED FOR REFERENCE ONLY AND WAS NOT PREPARED BY THE ENGINEER OF RECORD. AS SUCH, THE EOR ASSUMES NO RESPONSIBILITY FOR ERRORS, OMISSIONS, OR CODE COMPLIANCE ISSUES IN THE EXHAUST HOOD MANUFACTURER'S DOCUMENTS. ALL KITCHEN EXHAUST EQUIPMENT MUST COMPLY WITH 2012 IMC SECTION 506 AND LOCAL AMENDMENTS IN THEIR ENTIRETY.



This drawing is the property of ARCHITECTURAL GROUP INTL. and is not to be reproduced or copied in whole or in part. It is only to be used for the project and use specifically identified herein and is not to be used on any other project. It is to be returned upon request. Seals as stated herein are valid on the original drawing only. Contractor shall carefully review all dimensions and conditions shown herein and at once report to the Architect any error, inconsistency or omission he may discover.

Revisions:	Mark	Date	By	Description
		2/26/2018		ISSUED FOR PERMIT
		3/5/2018		BULLETIN #1

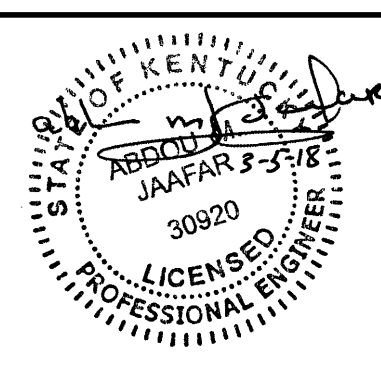


ALTO - DUVENECK SQUARE
 COVINGTON, KENTUCKY

PROJECT # 170928
 DATE ISSUED 01/23/2018

HOOD DRAWINGS

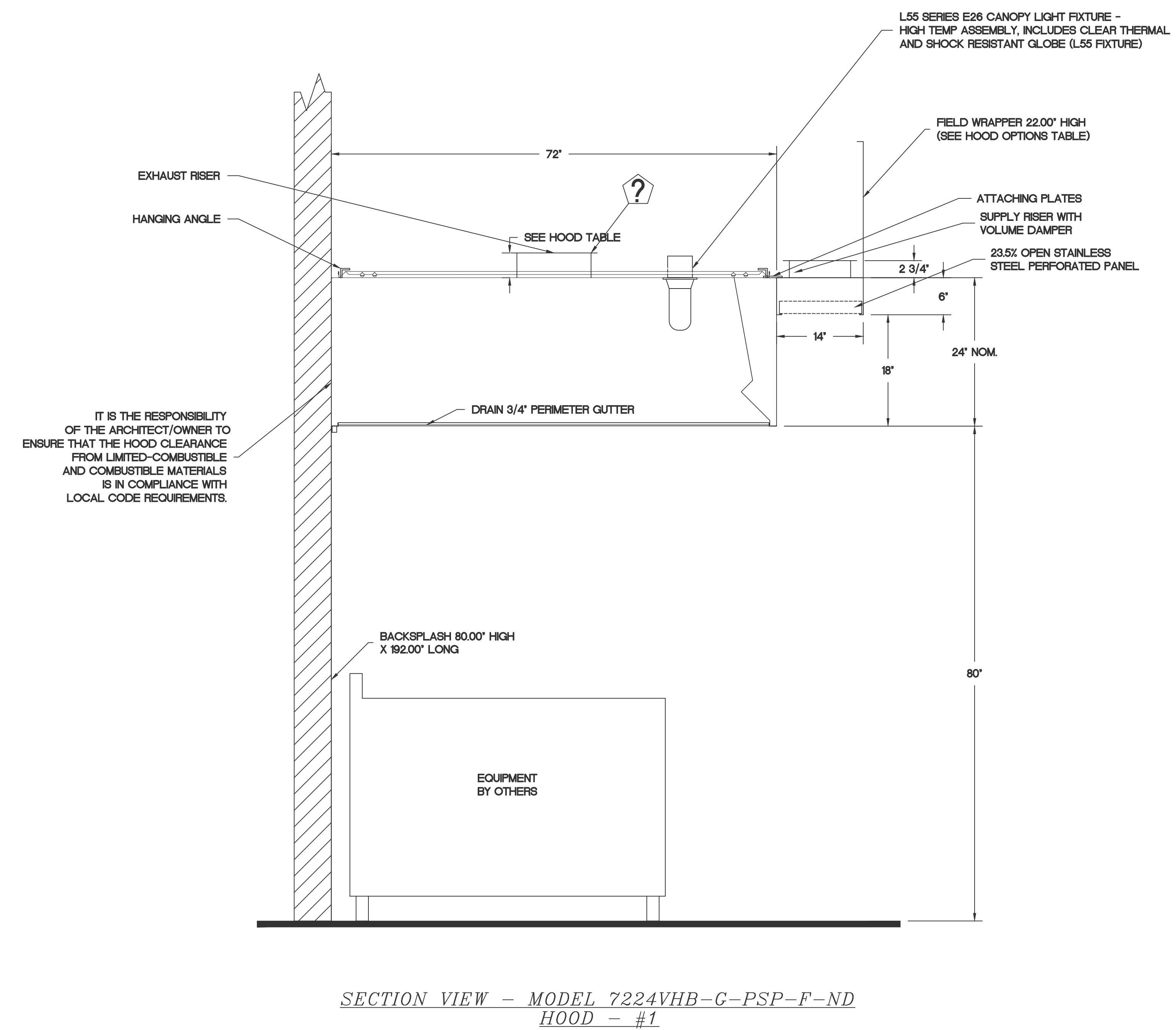
M4.0



This drawing is the property of ARCHITECTURAL GROUP INTL. and is not to be reproduced or copied in whole or in part. It is only to be used for the project and use specifically identified herein and is not to be used on any other project. It is to be returned upon request. Scales as stated herein are valid on the original drawing only. Contractor shall carefully review all dimensions and conditions shown hereon and at once report to the Architect any error, inconsistency or omission he may discover.

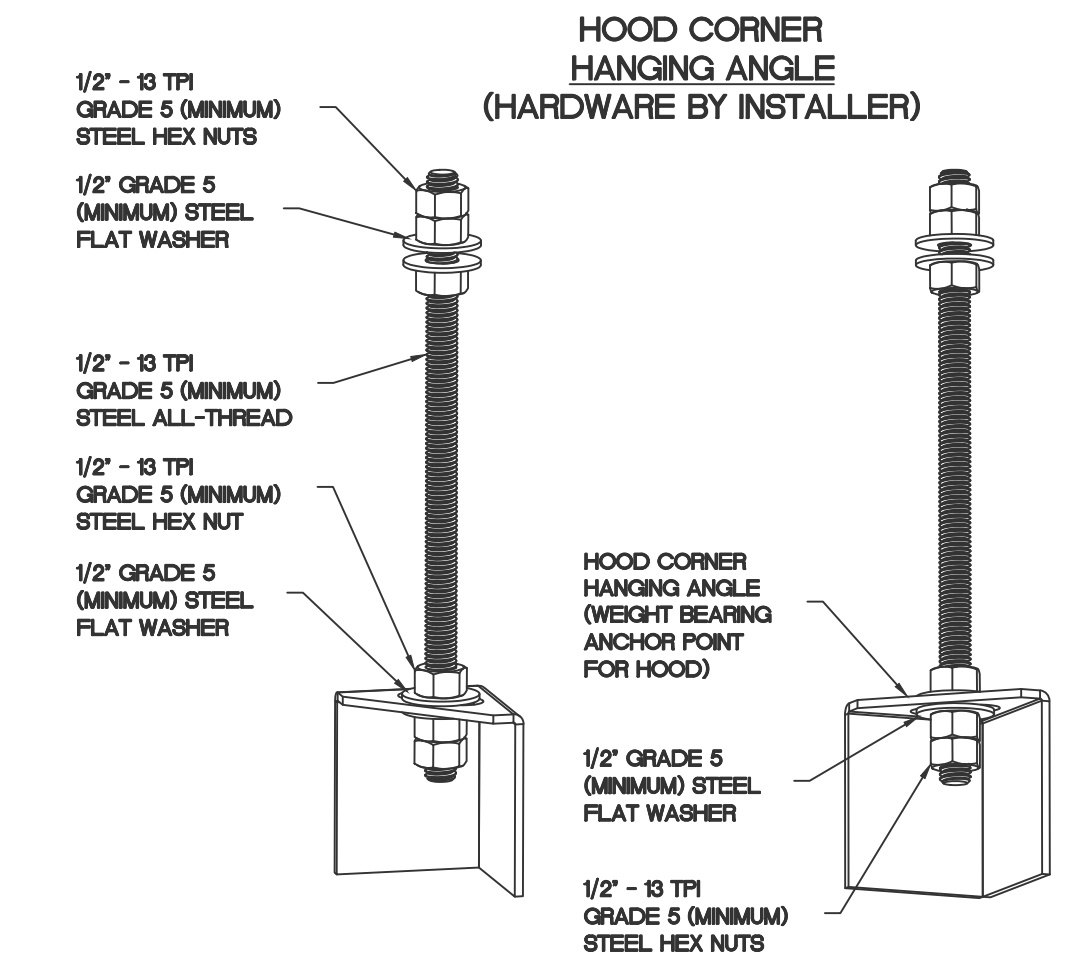
Revisions:

Mark	Date	By	Description
	2/26/2018		ISSUED FOR PERMIT
△	3/5/2018		BULLETIN #1



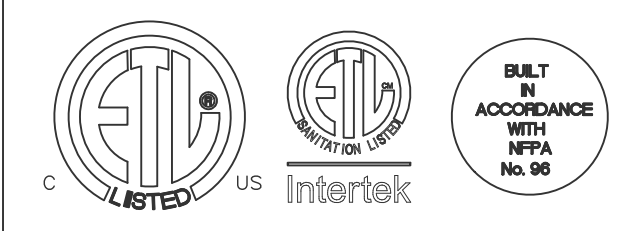
IT IS THE RESPONSIBILITY OF THE ARCHITECT/OWNER TO ENSURE THAT THE HOOD CLEARANCE FROM LIMITED-COMBUSTIBLE AND COMBUSTIBLE MATERIALS IS IN COMPLIANCE WITH LOCAL CODE REQUIREMENTS.

SECTION VIEW - MODEL 7224VHB-G-PSP-F-ND
 HOOD - #1



ASSEMBLY INSTRUCTIONS

HANGING ANGLE MUST BE SUPPORTED WITH 1/2\"/>



JOB Alto's (Northern Kentucky)	
LOCATION COVINGTON, KY, 41011	
DATE 2/13/2018	JOB # 3305041
DWG # 2	DRAWN BY
REV.	SCALE 3/8" = 1'-0"

NOTE:
 THE INFORMATION PRESENTED HERE IS PROVIDED FOR REFERENCE ONLY AND WAS NOT PREPARED BY THE ENGINEER OF RECORD. AS SUCH, THE EOR ASSUMES NO RESPONSIBILITY FOR ERRORS, OMISSIONS, OR CODE COMPLIANCE ISSUES IN THE EXHAUST HOOD MANUFACTURER'S DOCUMENTS. ALL KITCHEN EXHAUST EQUIPMENT MUST COMPLY WITH 2012 IMC SECTION 506 AND LOCAL AMENDMENTS IN THEIR ENTIRETY.



ALTO - DUVENECK SQUARE
 COVINGTON, KENTUCKY

PROJECT # 170928
 DATE ISSUED 01/23/2018

HOOD DRAWINGS

M4.1

EXHAUST FAN INFORMATION - Job#3305041

FAN UNIT NO.	TAG	FAN UNIT MODEL #	CFM	ESP.	RPM	H.P.	B.H.P.	†	VOLT	FLA	DISCHARGE VELOCITY	WEIGHT (LBS.)	SONES
1	KEF1	USB18DD-RM	2800	1.650	1269	2.000	1.2680	3	208	8.3	1435 FPM	405	18

MUA FAN INFORMATION - Job#3305041

FAN UNIT NO.	TAG	FAN UNIT MODEL #	BLOWER	HOUSING	MIN CFM	DESIGN CFM	ESP.	RPM	H.P.	B.H.P.	†	VOLT	FLA	WEIGHT (LBS.)	SONES	BURNER EFFICIENCY(%)
2	KMUA1	A1-D.250-G10	G10	A1-D.250	1000	2300	0.400	1152	1.500	1.1080	3	208	4.6	669	21	92

GAS FIRED MAKE-UP AIR UNIT(S)

FAN UNIT NO.	TAG	INPUT BTUs	OUTPUT BTUs	TEMP. RISE	REQUIRED INPUT GAS PRESSURE	GAS TYPE
2	KMUA1	175500	161460	65 deg F	7 in. w.c. - 14 in. w.c.	Natural

FAN OPTIONS

FAN UNIT NO.	TAG	OPTION (Qty. - Descr.)
1	KEF1	1 - B118 - 24" Discharge Extension.
		1 - B1 - Discharge Orientation Vertical Upper Left - CW Inlet Side.
		1 - B118 - Inlet Ring Used To Connect Non-Factory Duct.
		1 - Utility Set - Spring Vibration Isolators - B112 Thru B118 / Equivalent Sized Utility Set - Indoor/Outdoor use.
		1 - VAV Package w/ Manual Control (VFD Included)
		1 - VFD factory mounted and wired in Exhaust Fan.
		1 - Line Reactor Mounted in Fan
2	KMUA1	1 - Line Reactor Mounting Bracket for Direct Drive Fans (Up to 25 HP).
		1 - Motorized Backdraft Damper for A1-D Housing
		1 - Low Fire Start
		1 - Inlet Pressure Gauge, 0-35"
		1 - Manifold Pressure Gauge, -5 to 15" wc
		1 - VAV Package w/ Manual Control (VFD Included)
		1 - VFD factory mounted and wired in commercial control vestibule for tempered supply fan.
1 - Insulation Option for VBank filter section		

FAN ACCESSORIES

FAN UNIT NO.	TAG	EXHAUST			SUPPLY			
		GREASE CUP	GRAVITY DAMPER	WALL MOUNT	SIDE DISCHARGE	GRAVITY DAMPER	MOTORIZED DAMPER	WALL MOUNT
1	KEF1							
2	KMUA1				YES		YES	

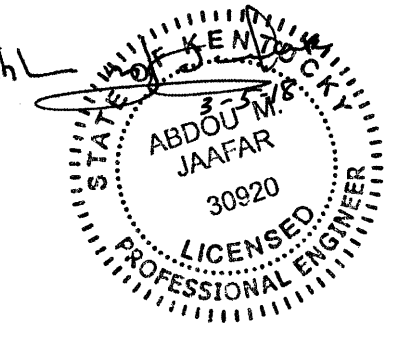
CURB ASSEMBLIES

NO.	ON FAN	TAG	WEIGHT	ITEM	SIZE
1	#1	KEF1	25 LBS	Curb	4.000"W x 48.000"L x 12.000"H



JOB Alto's (Northern Kentucky)	
LOCATION COVINGTON, KY, 41011	
DATE 2/13/2018	JOB # 3305041
DWG # 3	DRAWN BY
REV.	SCALE 3/8" = 1'-0"

NOTE:
THE INFORMATION PRESENTED HERE IS PROVIDED FOR REFERENCE ONLY AND WAS NOT PREPARED BY THE ENGINEER OF RECORD. AS SUCH, THE EOR ASSUMES NO RESPONSIBILITY FOR ERRORS, OMISSIONS, OR CODE COMPLIANCE ISSUES IN THE EXHAUST HOOD MANUFACTURER'S DOCUMENTS. ALL KITCHEN EXHAUST EQUIPMENT MUST COMPLY WITH 2012 IBC SECTION 506 AND LOCAL AMENDMENTS IN THEIR ENTIRETY.



This drawing is the property of ARCHITECTURAL GROUP INT'L and is not to be reproduced or copied in whole or in part. It is only to be used for the project and use specifically identified herein and is not to be used on any other project. It is to be returned upon request. Scales as stated herein are valid on the original drawing only. Contractor shall carefully review all dimensions and conditions shown hereon and at once report to the Architect any error, inconsistency or omission he may discover.

Revisions:

Mark	Date	By	Description
	2/26/2018		ISSUED FOR PERMIT
△	3/5/2018		BULLETIN #1



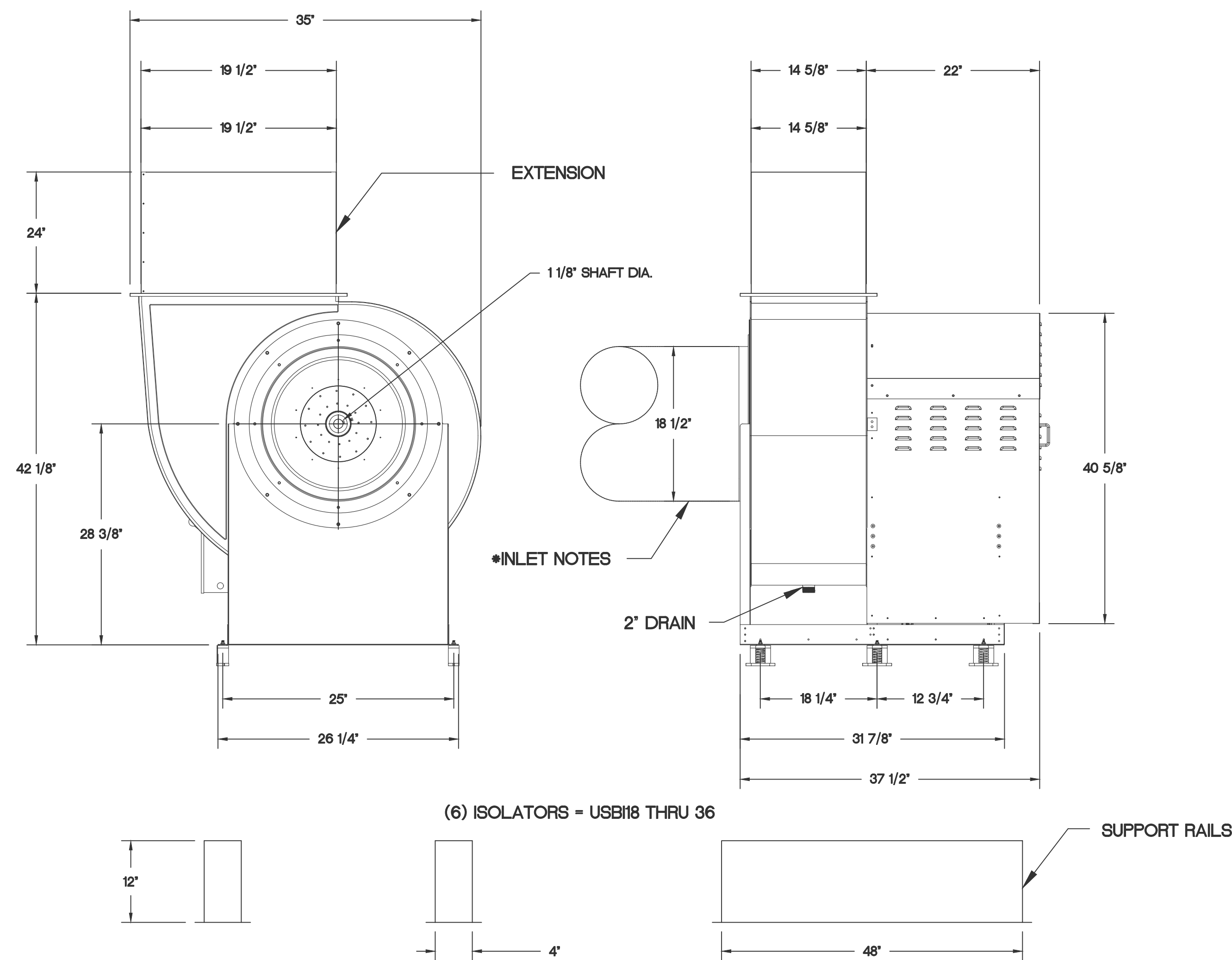
ALTO - DUVENECK SQUARE
COVINGTON, KENTUCKY

PROJECT # 170928
DATE ISSUED 01/23/2018

HOOD DRAWINGS

M4.2

FAN #1 USB118DD-RM - EXHAUST FAN (KEF1)



FEATURES:

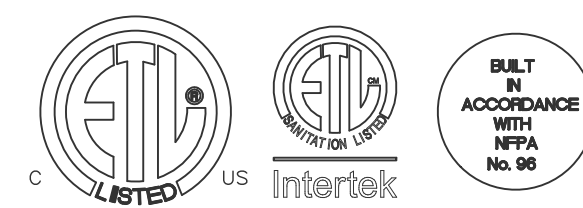
- ROOF MOUNTED FANS
- RESTAURANT MODEL
- UL705
- UL762
- HIGH HEAT OPERATION DIRECT DRIVE 350°F (176°C)
- HIGH HEAT OPERATION BELT DRIVE 350°F (176°C)
- HEAT SLINGER
- GREASE CLASSIFICATION TESTING
- 2" DRAIN
- MOTOR WEATHER COVER
- FULLY SEALED SCROLL HOUSING
- SCROLL ACCESS DOOR
- FLANGE 1 1/4" - 11 THRU 20.
- FLANGE 2" - 24 THRU 36.

OPTIONS

- BI18 - 24" DISCHARGE EXTENSION.
- BI - DISCHARGE ORIENTATION VERTICAL UPPER LEFT - CW INLET SIDE.
- BI8 - INLET RING USED TO CONNECT NON-FACTORY DUCT.
- UTILITY SET - SPRING VIBRATION ISOLATORS - BI12 THRU BI18 / EQUIVALENT SIZED UTILITY SET - INDOOR/OUTDOOR USE.
- VAV PACKAGE W/ MANUAL CONTROL (VFD INCLUDED)
- VFD FACTORY MOUNTED AND WIRED IN EXHAUST FAN.
- LINE REACTOR MOUNTED IN FAN
- LINE REACTOR MOUNTING BRACKET FOR DIRECT DRIVE FANS (UP TO 25 HP).

NORMAL TEMPERATURE TEST DIRECT DRIVE EXHAUST FAN MUST OPERATE CONTINUOUSLY WHILE EXHAUSTING AIR AT 350°F (176°C) UNTIL ALL FAN PARTS HAVE REACHED THERMAL EQUILIBRIUM, AND WITHOUT ANY DETERIORATING EFFECTS TO THE FAN WHICH WOULD CAUSE UNSAFE OPERATION.

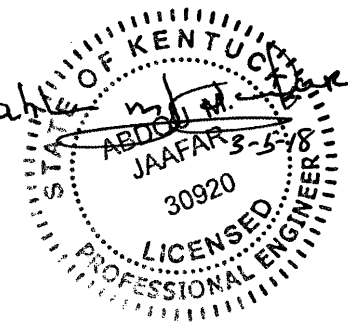
- * INLET NOTES:
 LENGTH OF THE STRAIGHT DUCT ON THE INLET TO BE 3 TIMES THE EQUIVALENT DUCT DIAMETER BEFORE CONNECTING TO ANY FITTINGS SUCH AS ELBOWS TO AVOID SYSTEM EFFECT.



CAPTIVEAIR

JOB Alto's (Northern Kentucky)	
LOCATION COVINGTON, KY, 41011	
DATE 2/13/2018	JOB # 3305041
DWG # 4	DRAWN BY
REV.	SCALE 3/8" = 1'-0"

NOTE:
 THE INFORMATION PRESENTED HERE IS PROVIDED FOR REFERENCE ONLY AND WAS NOT PREPARED BY THE ENGINEER OF RECORD. AS SUCH, THE EOR ASSUMES NO RESPONSIBILITY FOR ERRORS, OMISSIONS, OR CODE COMPLIANCE ISSUES IN THE EXHAUST HOOD MANUFACTURER'S DOCUMENTS. ALL KITCHEN EXHAUST EQUIPMENT MUST COMPLY WITH 2012 IMC SECTION 506 AND LOCAL AMENDMENTS IN THEIR ENTIRETY.



This drawing is the property of ARCHITECTURAL GROUP INT'L and is not to be reproduced and is not to be reproduced or copied in whole or in part. It is only to be used for the project and use specifically identified herein and is not to be used on any other project. It is to be returned upon request. Seals as stated herein are valid on the original drawing only. Contractor shall carefully review all dimensions and conditions shown herein and at once report to the Architect any error, inconsistency or omission he may discover.

Revisions:

Mark	Date	By	Description
	2/26/2018		ISSUED FOR PERMIT
	3/5/2018		BULLETIN #1



ALTO - DUVENECK SQUARE
 COVINGTON, KENTUCKY

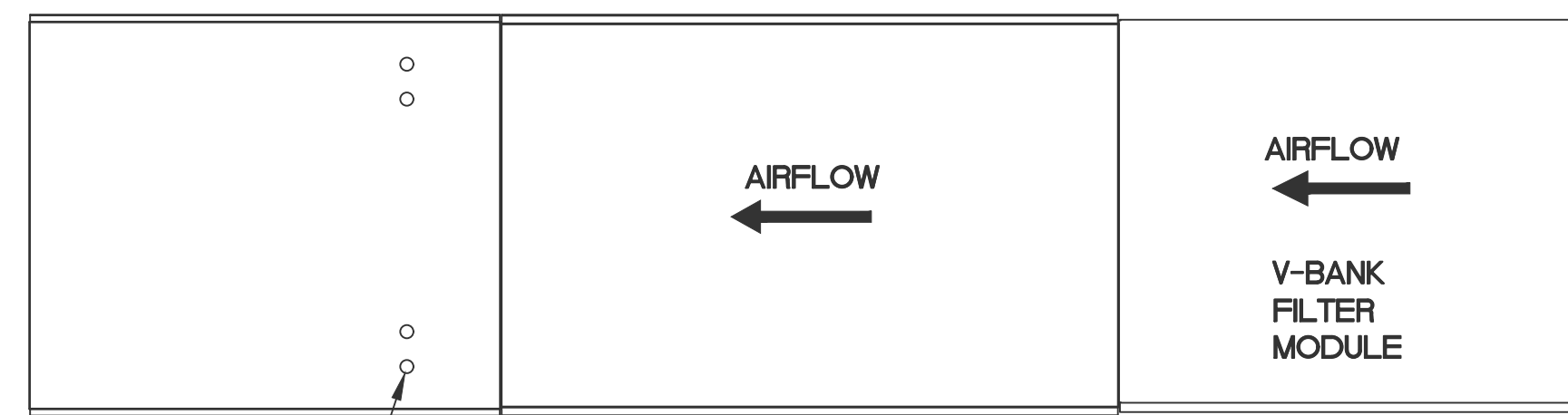
PROJECT # 170928
 DATE ISSUED 01/23/2018

HOOD DRAWINGS

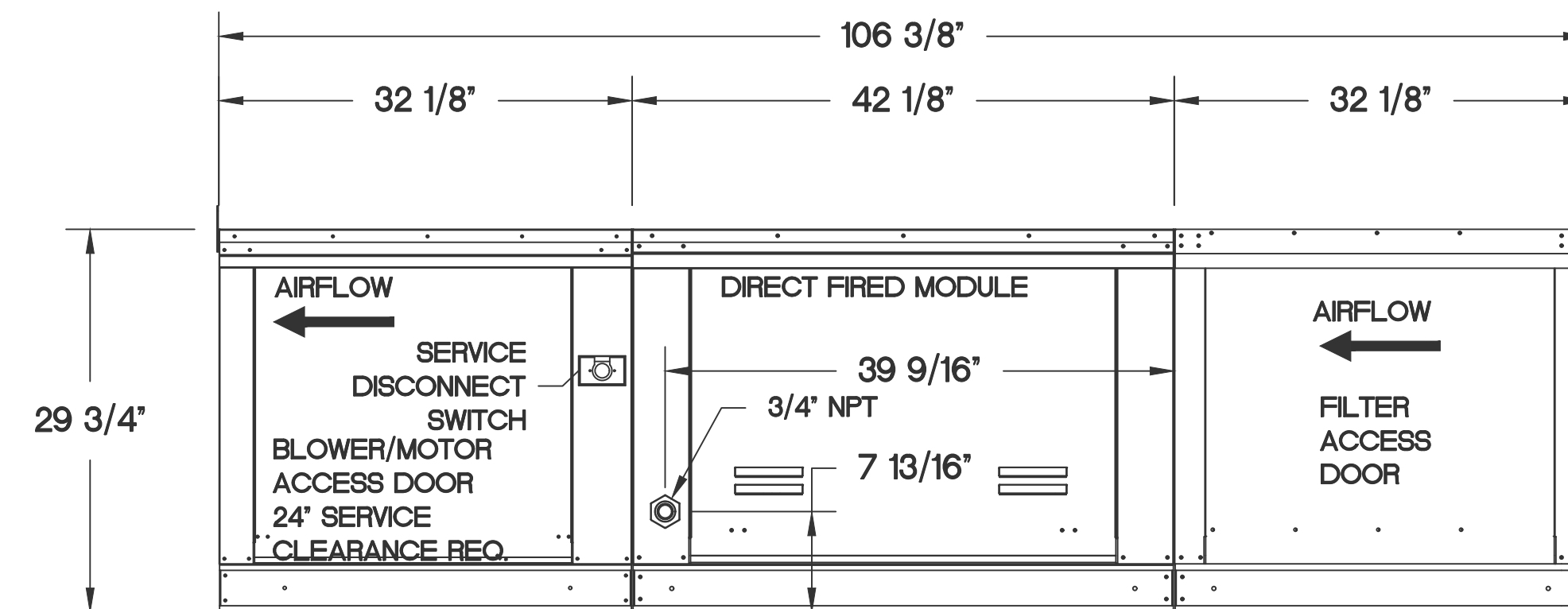
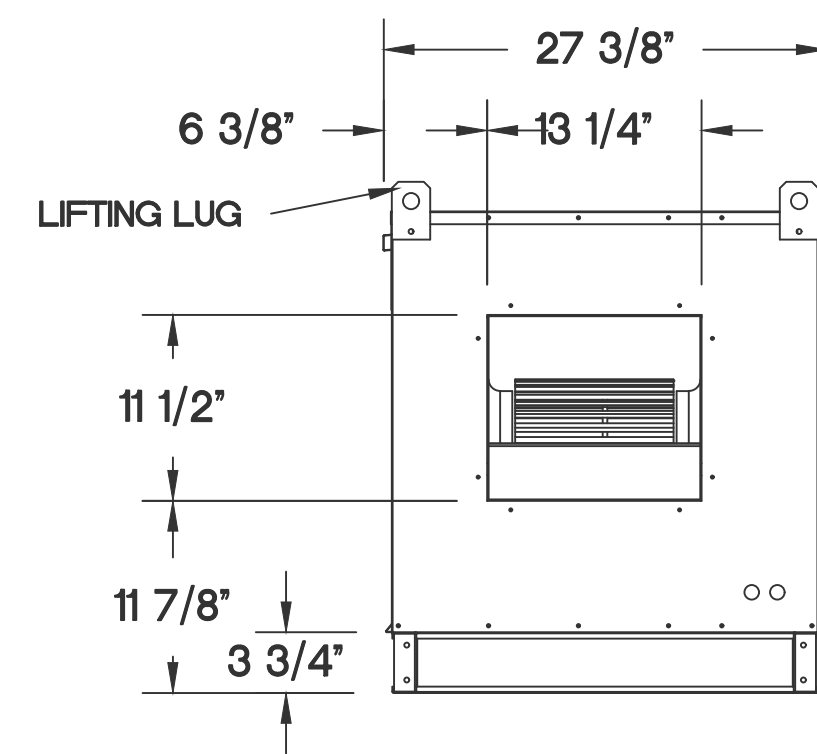
M4.3

- FAN #2 A1-D.250-G10 - HEATER (KMUA1)
1. DIRECT GAS FIRED HEATED MAKE UP AIR UNIT WITH 10" BLOWER
 2. V-BANK EZ FILTERS - INDOOR
 3. SIDE DISCHARGE - AIR FLOW RIGHT -> LEFT
 4. MOTORIZED BACK DRAFT DAMPER 16" X 18" FOR SIZE 1 STANDARD + MODULAR HEATER UNITS W/EXTENDED SHAFT, STANDARD GALVANIZED CONSTRUCTION, 3/4" REAR FLANGE, TFB120S ACTUATOR INCLUDED
 5. LOW FIRE START. ALLOWS THE BURNER CIRCUIT TO ENERGIZE WHEN THE MODULATION CONTROL IS IN A LOW FIRE POSITION.
 6. GAS PRESSURE GAUGE, 0-35", 2.5" DIAMETER, 1/4" THREAD SIZE
 7. GAS PRESSURE GAUGE, -5 TO +15 INCHES WC., 2.5" DIAMETER, 1/4" THREAD SIZE
 8. VAV (VARIABLE-AIR-VOLUME) WIRING PACKAGE FOR COMMERCIAL FANS.
 9. MANUAL SPEED CONTROL VARIABLE FREQUENCY DRIVE INCLUDED
 10. VFD FACTORY MOUNTED AND WIRED ON UNIT CONTROL PANEL.
 11. "INSULATION" FOR V-BANK INTAKE OPTION.

NOTE: SUPPLY DUCT MUST BE INSTALLED TO MEET SMACNA STANDARDS. A MINIMUM STRAIGHT DUCT LENGTH EQUAL TO THREE TIMES THE SUPPLY DUCT EQUIVALENT DIAMETER MUST BE MAINTAINED DOWNSTREAM OF UNIT DISCHARGE UNLESS OTHERWISE SPECIFIED. DO NOT RELY ON UNIT TO SUPPORT DUCT IN ANY WAY.

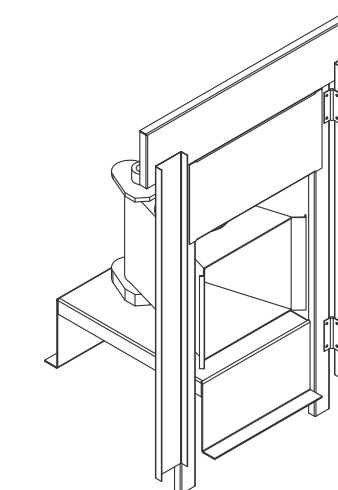


FLEX CONDUIT FOR FIELD WIRING



SUPPLY SIDE HEATER INFORMATION:

WINTER TEMPERATURE = 10°F. TEMP. RISE = 65°F.
 BTUs CALCULATED OFF STANDARD AIR DENSITY
 OUTPUT BTUs AT ALTITUDE OF 0.0 ft. = 161460
 INPUT BTUs AT ALTITUDE OF 0.0 ft. = 175500



Direct Fired (DF) Profile Plate Assembly

Direct Fired Profile Plate Specifications

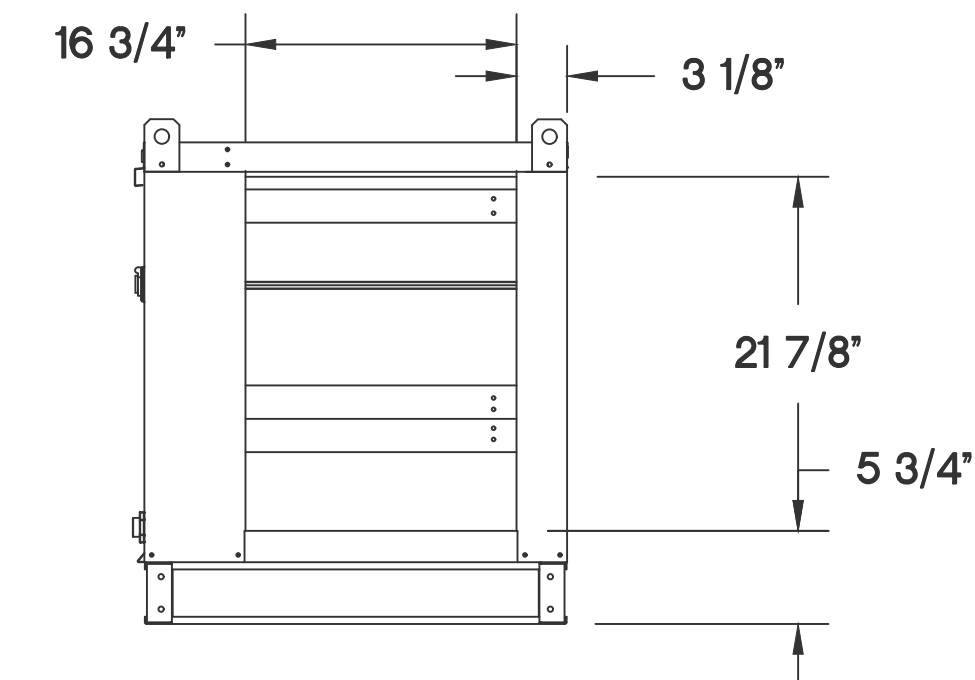
Description:
 Direct fired burners shall have patented (US Patent No. US6629523B2), self-adjusting profile plates designed to ensure proper air velocity and pressure drop across the burner. Profile plates shall allow burners to achieve clean combustion by limiting by-product levels to a maximum of 5ppm of carbon monoxide (CO), and 0.5ppm of nitrogen dioxide (NO2).

Application:
 Spring-loaded burner profile plates are engineered to automatically react to the momentum of a fresh air stream, without the need for any motors or actuators to mechanically adjust them. With this feature, all DF units are designed for demand control ventilation (DCV) requirements.

Certification:
 All profile plate assemblies shall be included in the DF unit's ETL listing and comply with combined safety standards ANSI Z83.4 and CSA 37 (non-recirculating DF heaters) and ANSI Z83.16 (recirculating DF heaters).

General Construction:

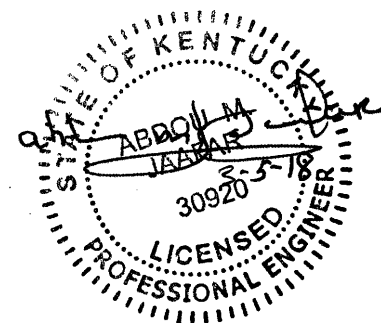
- Profile plates shall be formed from G90 galvanized steel.
- Profile plates shall vary in size per unit.
- Profile plates shall be mounted along the same plane as the discharge of the burner.
- Design shall incorporate properly torqued, permanently mounted spring hinges.
- Spring hinges shall be made from plated steel.



CAPTIVEAIR

JOB Alto's (Northern Kentucky)	
LOCATION COVINGTON, KY, 41011	
DATE 2/13/2018	JOB # 3305041
DWG # 5	DRAWN BY
REV.	SCALE 3/8" = 1'-0"

NOTE:
 THE INFORMATION PRESENTED HERE IS PROVIDED FOR REFERENCE ONLY AND WAS NOT PREPARED BY THE ENGINEER OF RECORD. AS SUCH, THE EOR ASSUMES NO RESPONSIBILITY FOR ERRORS, OMISSIONS, OR CODE COMPLIANCE ISSUES IN THE EXHAUST HOOD MANUFACTURER'S DOCUMENTS. ALL KITCHEN EXHAUST EQUIPMENT MUST COMPLY WITH 2012 IMC SECTION 506 AND LOCAL AMENDMENTS IN THEIR ENTIRETY.



This drawing is the property of ARCHITECTURAL GROUP INTL. and is not to be reproduced or copied in whole or in part. It is only to be used for the project and use specifically identified herein and is not to be used on any other project. It is to be returned upon request. Seals as stated herein are valid on the original drawing only. Contractor shall carefully review all dimensions and conditions shown hereon and at once report to the Architect any error, inconsistency or omission he may discover.

Revisions:

Mark	Date	By	Description
	2/26/2018		ISSUED FOR PERMIT
	3/5/2018		BULLETIN #1



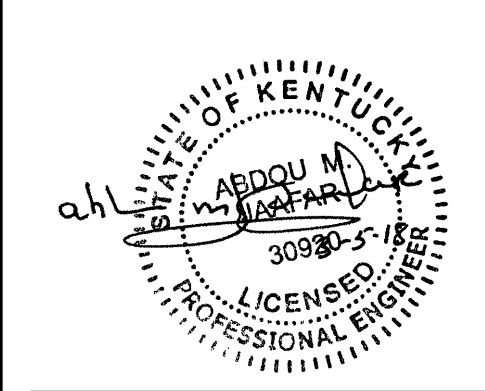
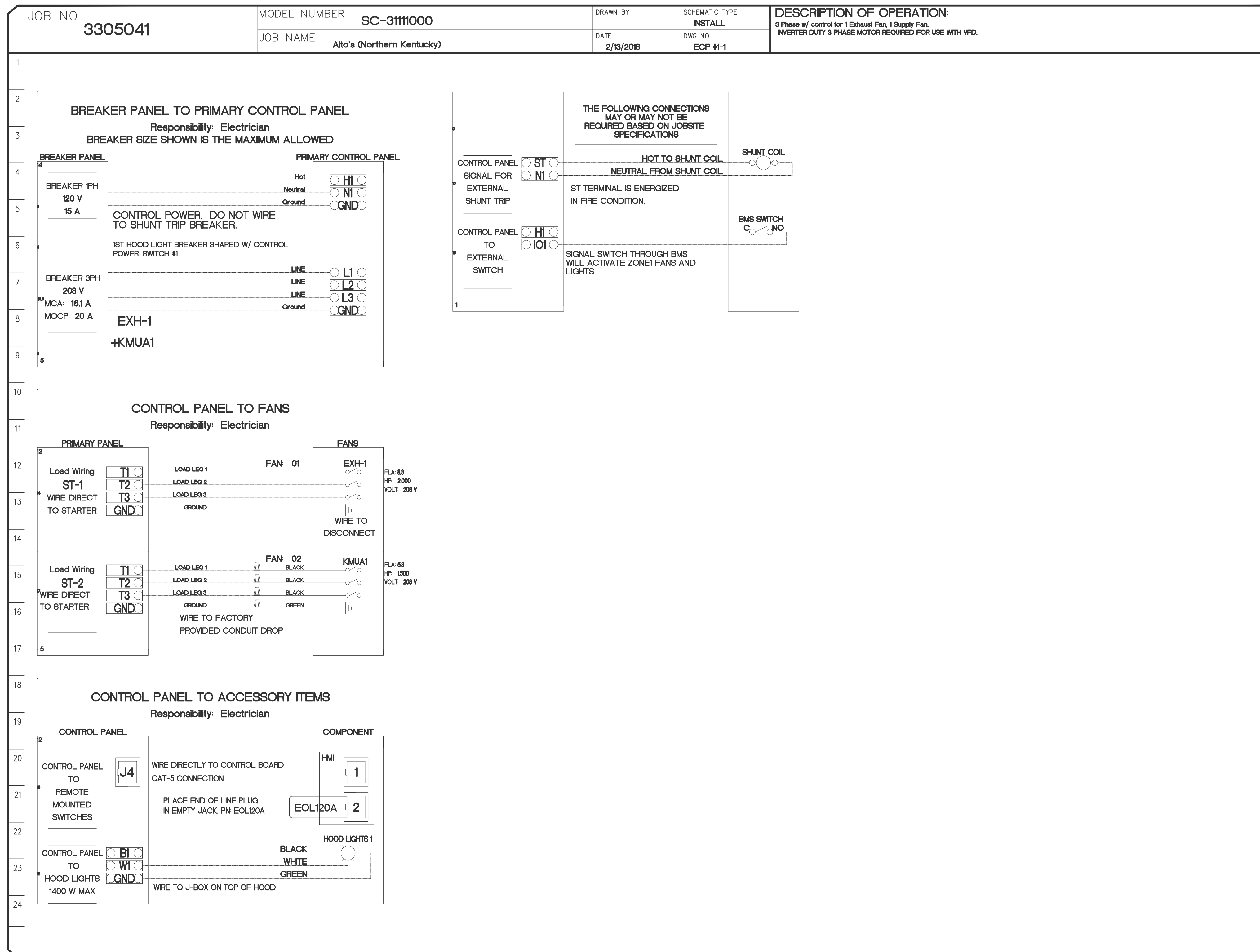
ALTO - DUVENECK SQUARE
 COVINGTON, KENTUCKY

PROJECT # 170928
 DATE ISSUED 01/23/2018

HOOD DRAWINGS

M4.4

NO.	TAG	PACKAGE #	LOCATION	SWITCHES		OPTION	FANS CONTROLLED					
				LOCATION	QUANTITY		FAN TAG	TYPE	Φ	H.P.	VOLT	FLA
1	KEP1	SC-3111000	Wall Mount In SS Box	02 - Face Mount Right Side of Hood Hood # 1	1 Light 1 Fan	Smart Controls Basic	KEF1	Exhaust	3	2,000	208	8.3
							KMUA1	Supply	3	1,500	208	4.6



This drawing is the property of ARCHITECTURAL GROUP INTL. and is not to be reproduced or copied in whole or in part. It is only to be used for the project and use specifically identified herein and is not to be used on any other project. It is to be returned upon request. Scales as stated herein are valid on the original drawing only. Contractor shall carefully review all dimensions and conditions shown hereon and at once report to the Architect any error, inconsistency or omission he may discover.

Revisions:

Mark	Date	By	Description
	2/26/2018		ISSUED FOR PERMIT
Δ	3/5/2018		BULLETIN #1



ALTO - DUVENECK SQUARE
 COVINGTON, KENTUCKY

PROJECT # 170928
 DATE ISSUED 01/23/2018

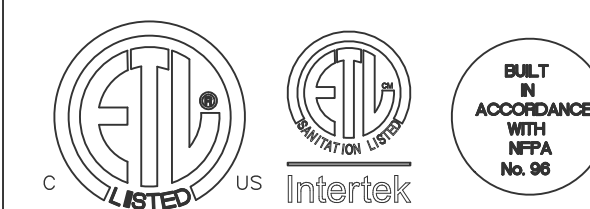
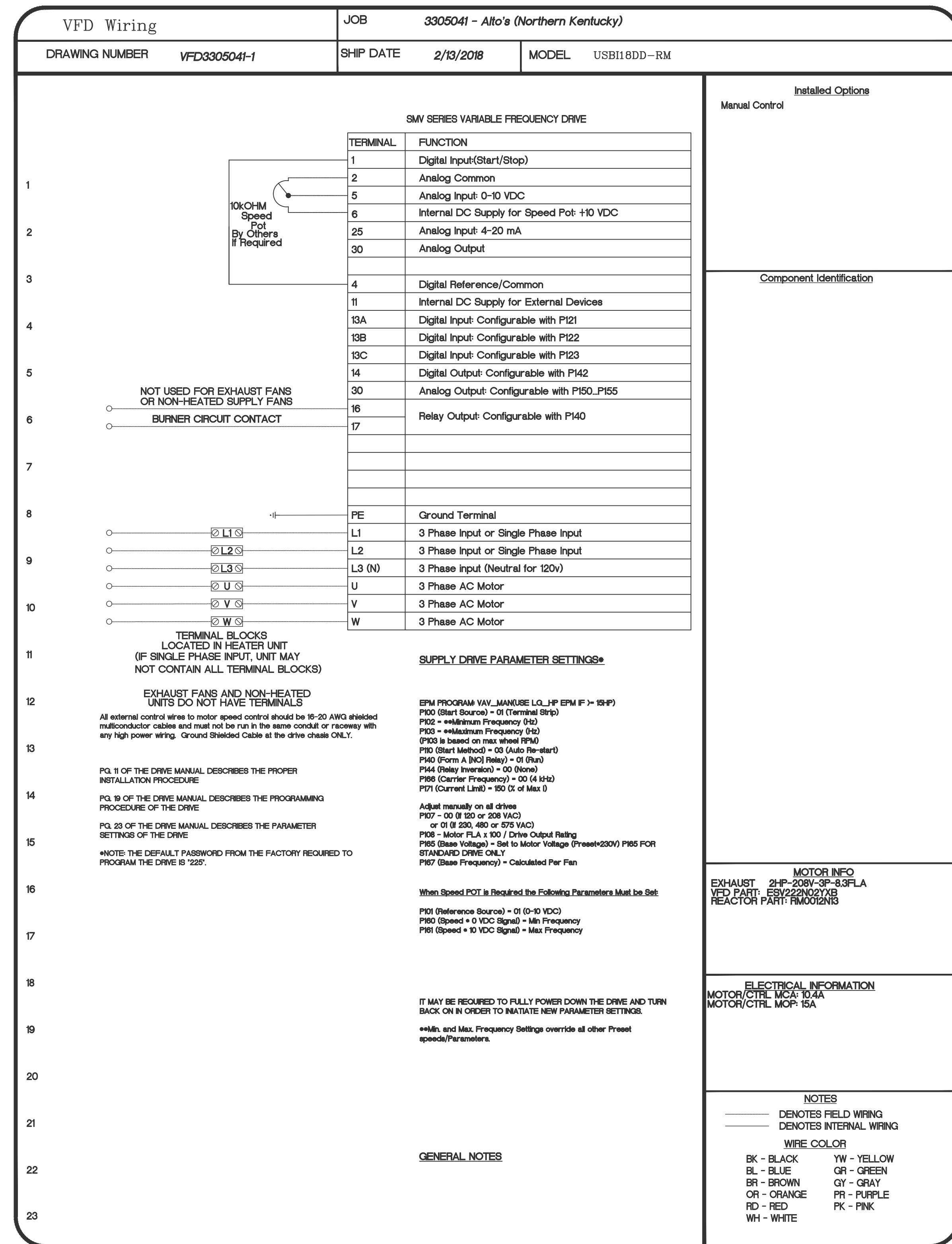
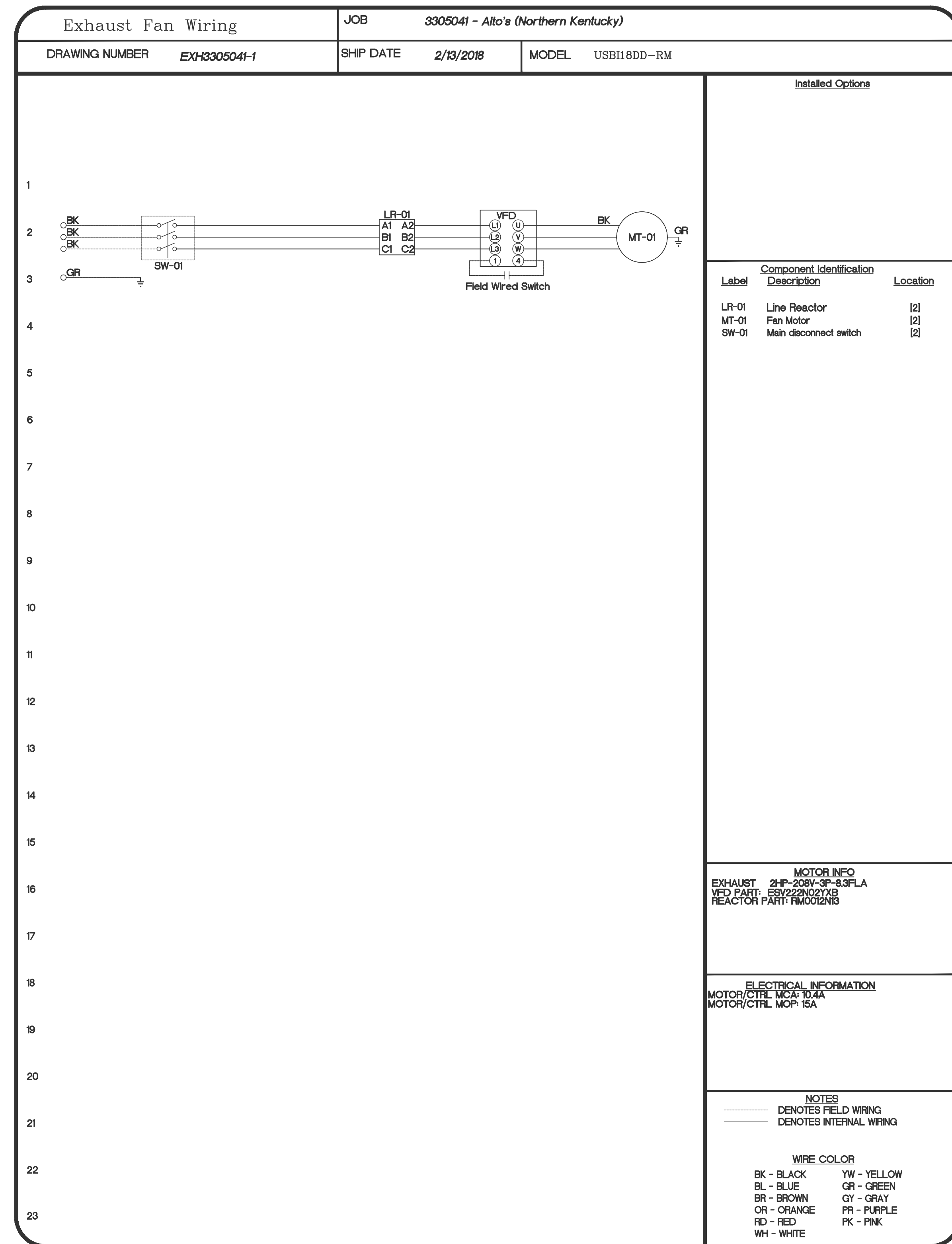
HOOD DRAWINGS

M4.5



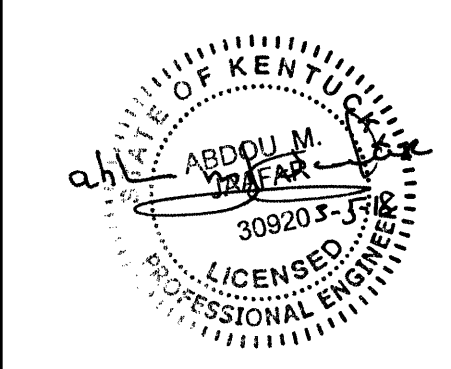
JOB Alto's (Northern Kentucky)	
LOCATION COVINGTON, KY, 41011	
DATE 2/13/2018	JOB # 3305041
DWG # 6	DRAWN BY
REV.	SCALE 3/8" = 1'-0"

NOTE:
 THE INFORMATION PRESENTED HERE IS PROVIDED FOR REFERENCE ONLY AND WAS NOT PREPARED BY THE ENGINEER OF RECORD. AS SUCH, THE EOR ASSUMES NO RESPONSIBILITY FOR ERRORS, OMISSIONS, OR CODE COMPLIANCE ISSUES IN THE EXHAUST HOOD MANUFACTURER'S DOCUMENTS. ALL KITCHEN EXHAUST EQUIPMENT MUST COMPLY WITH 2012 IMC SECTION 506 AND LOCAL AMENDMENTS IN THEIR ENTIRETY.



JOB Alto's (Northern Kentucky)	
LOCATION COVINGTON, KY, 41011	
DATE 2/13/2018	JOB # 3305041
DWG # 7	DRAWN BY
REV.	SCALE 3/8" = 1'-0"

NOTE:
THE INFORMATION PRESENTED HERE IS PROVIDED FOR REFERENCE ONLY AND WAS NOT PREPARED BY THE ENGINEER OF RECORD. AS SUCH, THE EOR ASSUMES NO RESPONSIBILITY FOR ERRORS, OMISSIONS, OR CODE COMPLIANCE ISSUES IN THE EXHAUST HOOD MANUFACTURER'S DOCUMENTS. ALL KITCHEN EXHAUST EQUIPMENT MUST COMPLY WITH 2012 IMC SECTION 506 AND LOCAL AMENDMENTS IN THEIR ENTIRETY.



This drawing is the property of ARCHITECTURAL GROUP INTL. and is not to be reproduced or copied in whole or in part. It is only to be used for the project and use specifically identified herein and is not to be used on any other project. It is to be returned upon request. Scales as stated herein are valid on the original drawing only. Contractor shall carefully review all dimensions and conditions shown hereon and at once report to the Architect any error, inconsistency or omission he may discover.

Revisions:

Mark	Date	By	Description
2/26/2018			
ISSUED FOR PERMIT			
3/5/2018			
BULLETIN #1			

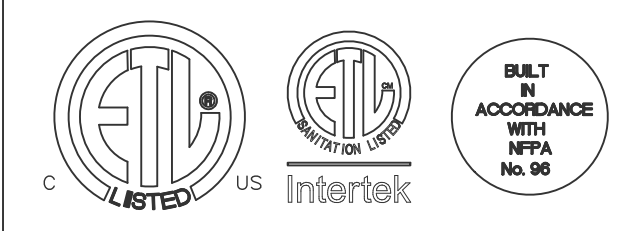
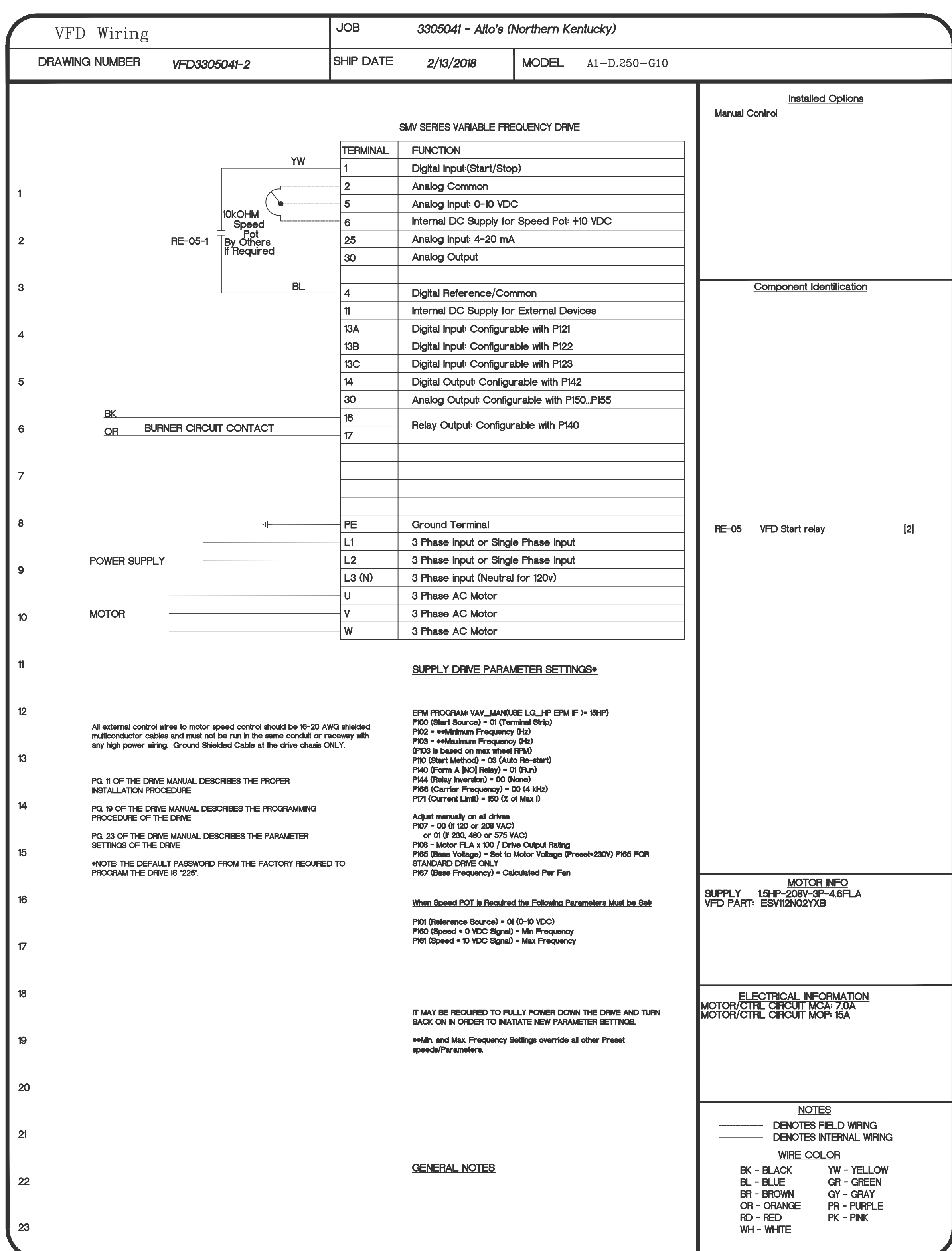
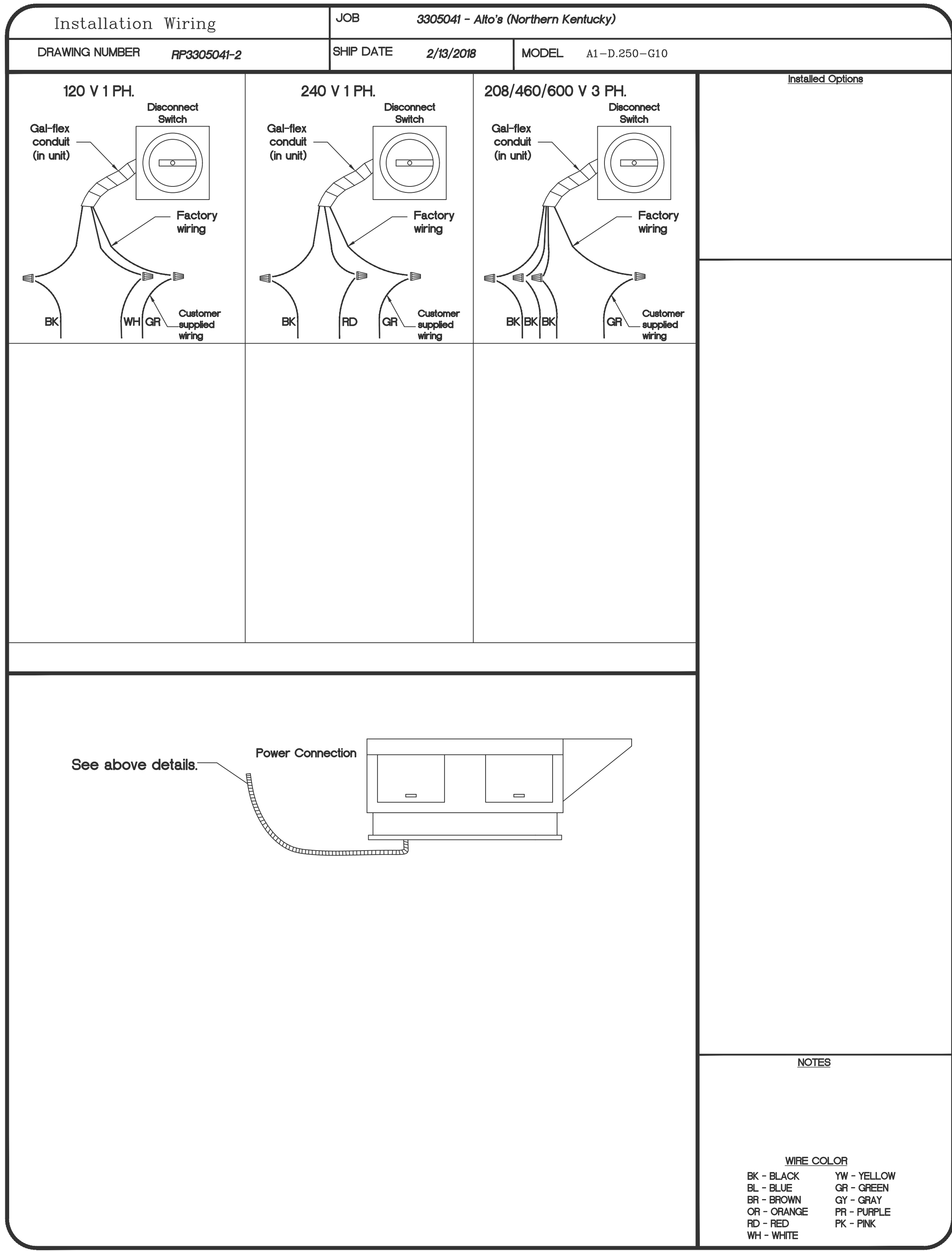


ALTO - DUVENECK SQUARE
COVINGTON, KENTUCKY

PROJECT # 170928
DATE ISSUED 01/23/2018

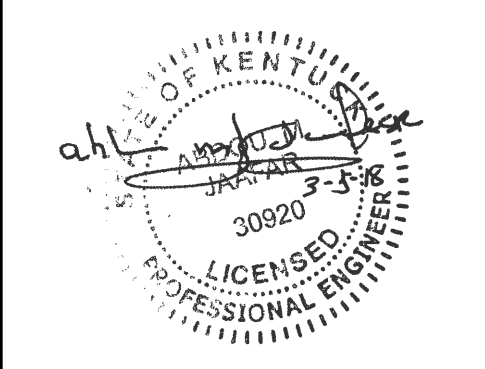
HOOD DRAWINGS

M4.6



JOB Alto's (Northern Kentucky)	
LOCATION COVINGTON, KY, 41011	
DATE 2/13/2018	JOB # 3305041
DWG # 8	DRAWN BY
REV.	SCALE 3/8" = 1'-0"

NOTE:
THE INFORMATION PRESENTED HERE IS PROVIDED FOR REFERENCE ONLY AND WAS NOT PREPARED BY THE ENGINEER OF RECORD. AS SUCH, THE EOR ASSUMES NO RESPONSIBILITY FOR ERRORS, OMISSIONS, OR CODE COMPLIANCE ISSUES IN THE EXHAUST HOOD MANUFACTURER'S DOCUMENTS. ALL KITCHEN EXHAUST EQUIPMENT MUST COMPLY WITH 2012 IMC SECTION 506 AND LOCAL AMENDMENTS IN THEIR ENTIRETY.



This drawing is the property of ARCHITECTURAL GROUP INTL. and is not to be reproduced and is not to be reproduced or copied in whole or in part. It is only to be used for the project and use specifically identified herein and is not to be used on any other project. It is to be returned upon request. Scales as stated herein are valid on the original drawing only. Contractor shall carefully review all dimensions and conditions shown hereon and at once report to the Architect any error, inconsistency or omission he may discover.

Revisions:

Mark	Date	By	Description
	2/26/2018		ISSUED FOR PERMIT
	3/5/2018		BULLETIN #1



ALTO - DUVENECK SQUARE
COVINGTON, KENTUCKY

PROJECT #	170928
DATE ISSUED	01/23/2018

HOOD DRAWINGS

M4.7