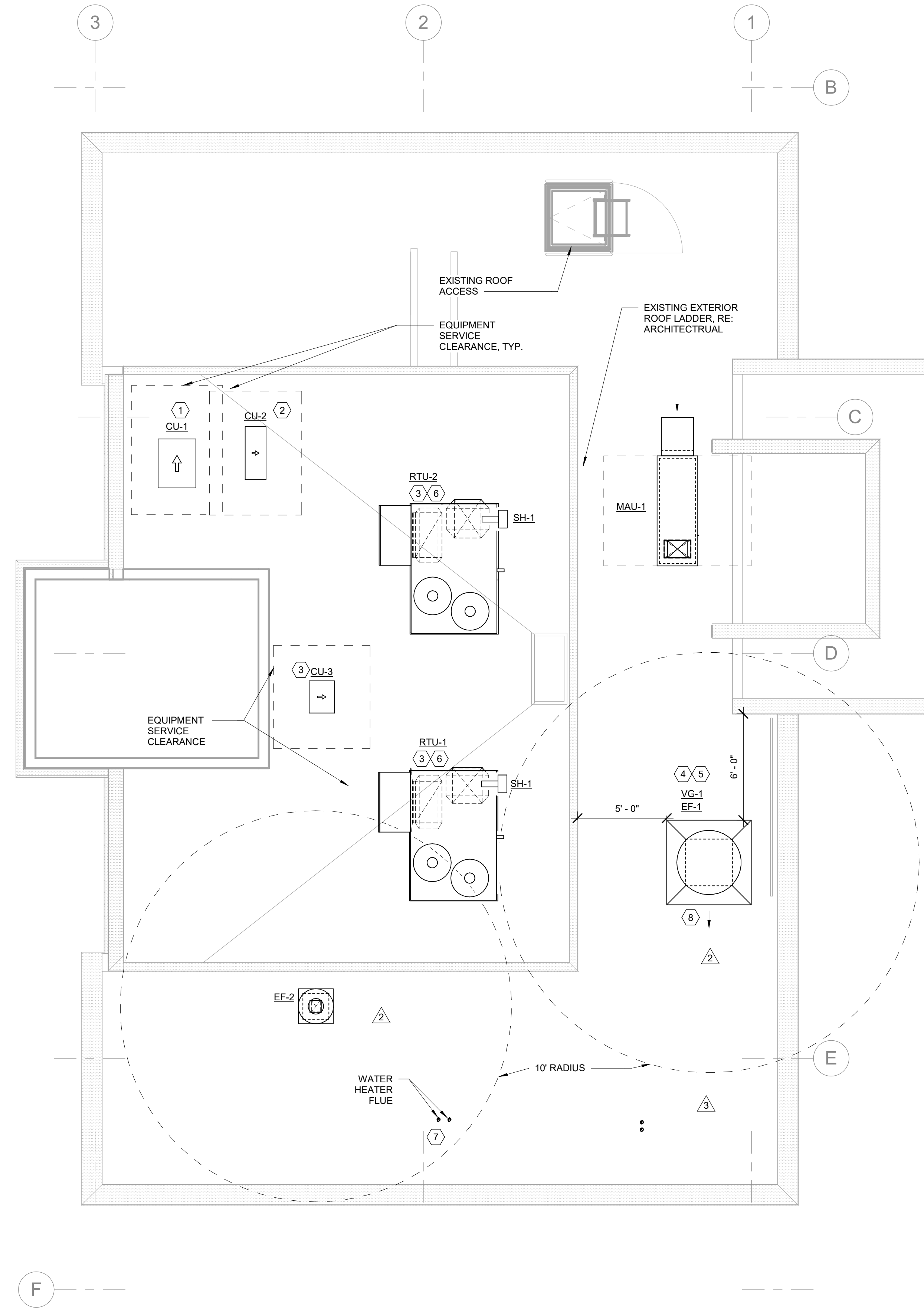
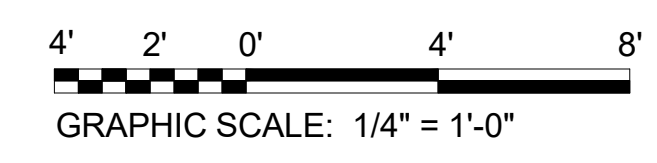


KEY NOTES:

1. INSTALL REMOTE CONDENSING UNIT FOR WALK-IN COOLER ON ROOF AS DETAILED IN THE ARCHITECTURAL AND STRUCTURAL DRAWINGS. INSTALL REFRIGERANT LINE SET, THERMOSTATIC EXPANSION VALVE, SOLENOID VALVE, TEMPERATURE CONTROL, SIGHT GLASS, FILTER DRIER, PRESSURE CONTROL, LOW AMBIENT CONTROL, AND WEATHERPROOF HOUSING. TRAP AND SLOPE REFRIGERANT LINES PER MANUFACTURER'S RECOMMENDATIONS. INSTALLATION SHALL COMPLY WITH ASHRAE 15 STANDARD 15. INSTALL THE REFRIGERANT LINE SET UNDER THE ROOF DECK TO WITHIN 3" OF THE CONDENSING UNIT. CUT 2-1/2" HOLE IN WALK-IN COOLER ROOF FOR REFRIGERANT LINE SET AND SEAL PER THE COOLER MANUFACTURER'S INSTALLATION INSTRUCTIONS AFTER LINE SET IS INSTALLED.
2. INSTALL REMOTE CONDENSER FOR ICE MACHINE ON ROOF AS DETAILED IN THE ARCHITECTURAL AND STRUCTURAL DRAWINGS. INSTALL REFRIGERANT LINE SET, THERMOSTATIC EXPANSION VALVE, SOLENOID VALVE, TEMPERATURE CONTROL, SIGHT GLASS, FILTER DRIER, PRESSURE CONTROL, LOW AMBIENT CONTROL, AND WEATHERPROOF HOUSING. TRAP AND SLOPE REFRIGERANT LINES PER MANUFACTURER'S RECOMMENDATIONS. SEAL PIPING PENETRATIONS THROUGH ROOF. INSTALLATION SHALL COMPLY WITH ASHRAE 15 STANDARD 15. INSTALL THE REFRIGERANT LINE SET UNDER THE ROOF DECK TO WITHIN 3" OF THE REMOTE CONDENSER. IF REFRIGERANT PIPING TO ICE MAKER IS EXPOSED TO PUBLIC VIEW CONCEAL WITH A STAINLESS STEEL SHROUD AS SHOWN IN THE ARCHITECTURAL DRAWINGS.
3. INSTALL ROOFTOP EQUIPMENT PER MANUFACTURER'S INSTALLATION INSTRUCTIONS AND AS DETAILED IN THE ARCHITECTURAL AND STRUCTURAL DRAWINGS.
4. INSTALL EXHAUST FAN EF-1 PER DETAIL 6M700 AND AS DETAILED IN THE ARCHITECTURAL AND STRUCTURAL DRAWINGS. INSTALL GREASE WIRROGUARD SYSTEM FURNISHED BY CHIPOTLE ON EXHAUST FAN, EF-1.
5. PROVIDE HINGED ROOF CURB TO ACCESS DUCT FOR CLEANING.
6. INSTALL RIMS HALO AIR PURIFIER FURNISHED BY TUV IN RTU PER DETAIL 6M700. SEE ELECTRICAL DRAWINGS FOR POWER CONNECTION INFORMATION. INSTALL UV WARNING STICKERS ON FACE OF ENCLOSURE PER DETAIL AND ON ANY RTU ACCESS DOORS THROUGH WHICH THE RIMS HALO WOULD BE VISIBLE IF OPENED.
7. MAINTAIN 10' CLEARANCE BETWEEN WATER HEATER FLUE TERMINATION AND OUTSIDE AIR INTAKES. MAINTAIN 10' CLEARANCE BETWEEN WATER HEATER COMBUSTION AIR INTAKE AND EXHAUST FAN EF-1 DISCHARGE. SEE PLUMBING DRAWINGS FOR MORE INFORMATION ON WATER HEATER FLUE AND COMBUSTION AIR TERMINATIONS.
8. EXHAUST FAN WITH 45 DEGREE WINDWARD EXTENSION ANGLED SOUTH (AWAY FROM ALL WALLS) WITH BOTTOM OF OUTLET MINIMUM 2'-0" ABOVE EAST PARAPET WALL.



MECHANICAL ROOF PLAN
1/4" = 1'-0"



Consultant:
Bowman
PCD ENGINEERING, INC. A BOWMAN COMPANY
323 3RD AVENUE, #100
LONGMONT, CO 80501
TEL: 303.478.1108 FAX: 303.478.1142
WWW.PCDENGINEERING.COM
WWW.BOWMAN.COM



COPYRIGHT 2023
THIS DRAWING IS AN INSTRUMENT OF SERVICE AND AS SUCH REMAINS THE PROPERTY OF CHIPOTLE MEXICAN GRILL, INC. PERMISSION FOR USE OF THIS DOCUMENT IS LIMITED AND CAN BE EXTENDED ONLY BY WRITTEN AGREEMENT WITH CHIPOTLE MEXICAN GRILL, INC.



CHIPOTLE MEXICAN GRILL, INC.
PO BOX 182566
COLUMBUS, OH 43218-2566
TELEPHONE: 614.318.2400
INTERNET: WWW.CHIPOTLE.COM

STORE NO.: 4710
TRENT & ARGONNE
8901 E TRENT AVE
MILLWOOD, WA 99212

Issue Record:	
06/06/2023	PERMIT SET
09/06/2023	IFC SET

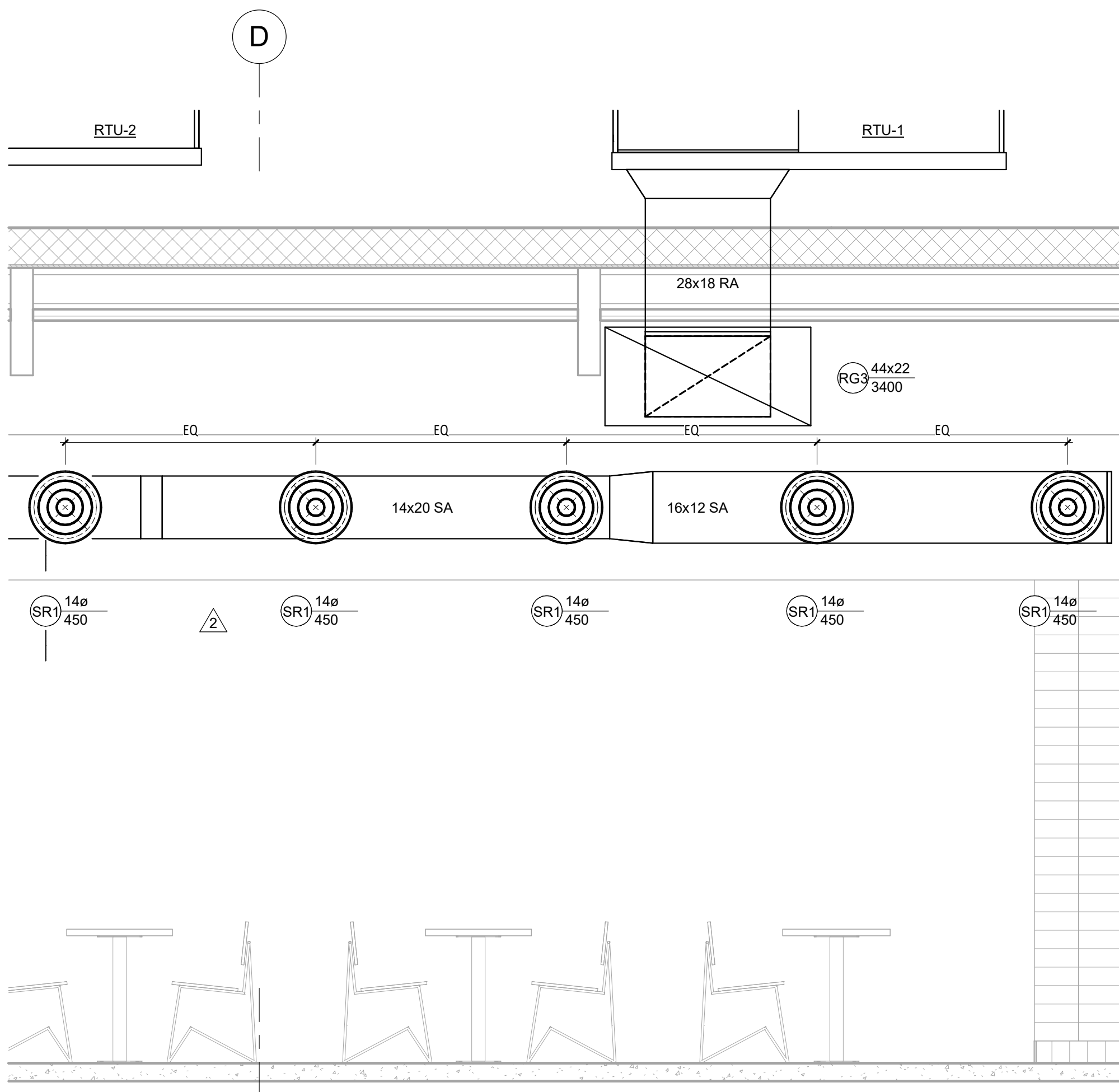
Revisions:	
2	07/14/2023 PLAN REVIEW COMMENTS
3	07/24/2023 ADDENDUM 1

Drawn: MGC
Checked: WS

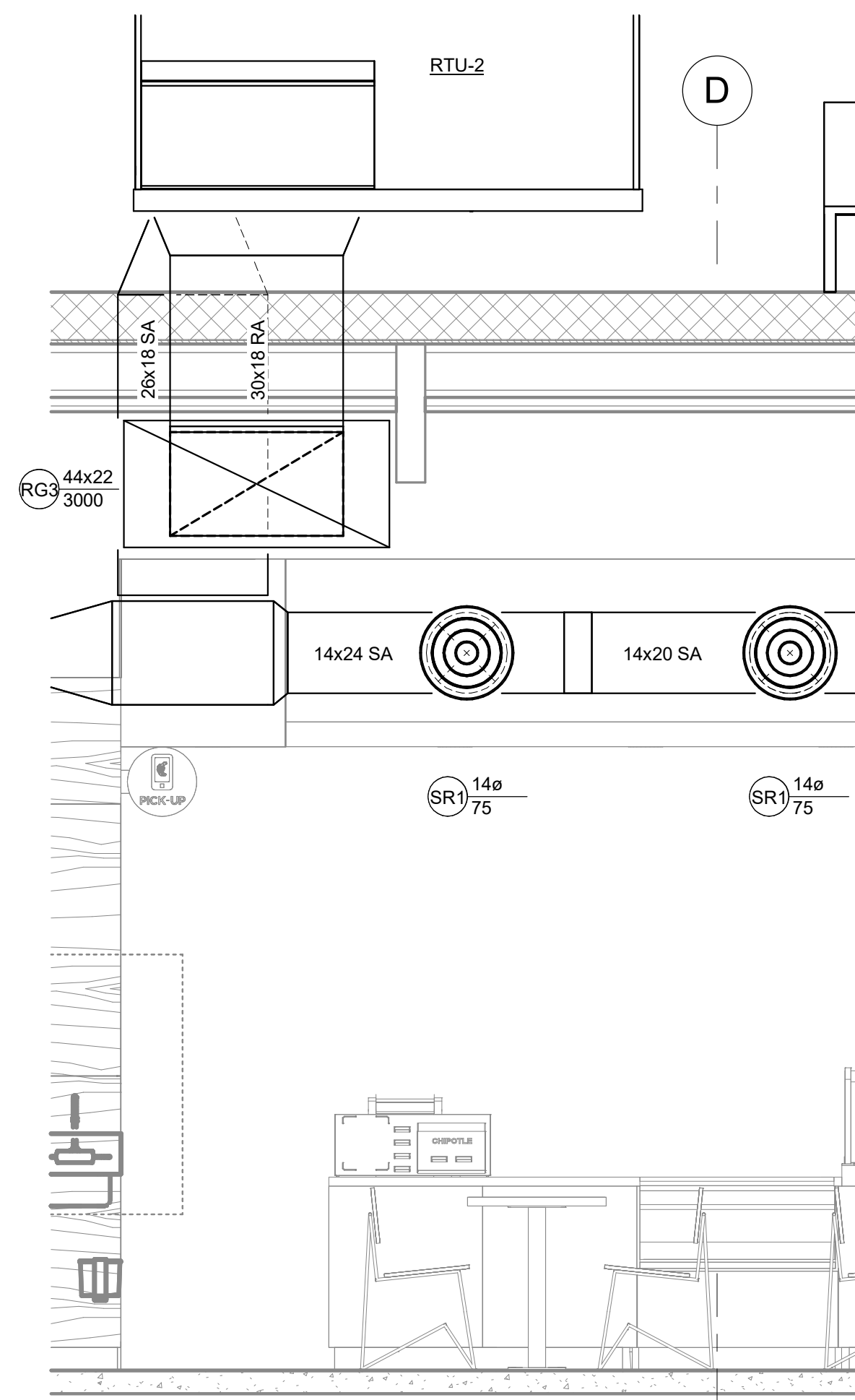
Project No.
230356

Contents:
MECHANICAL ROOF PLAN

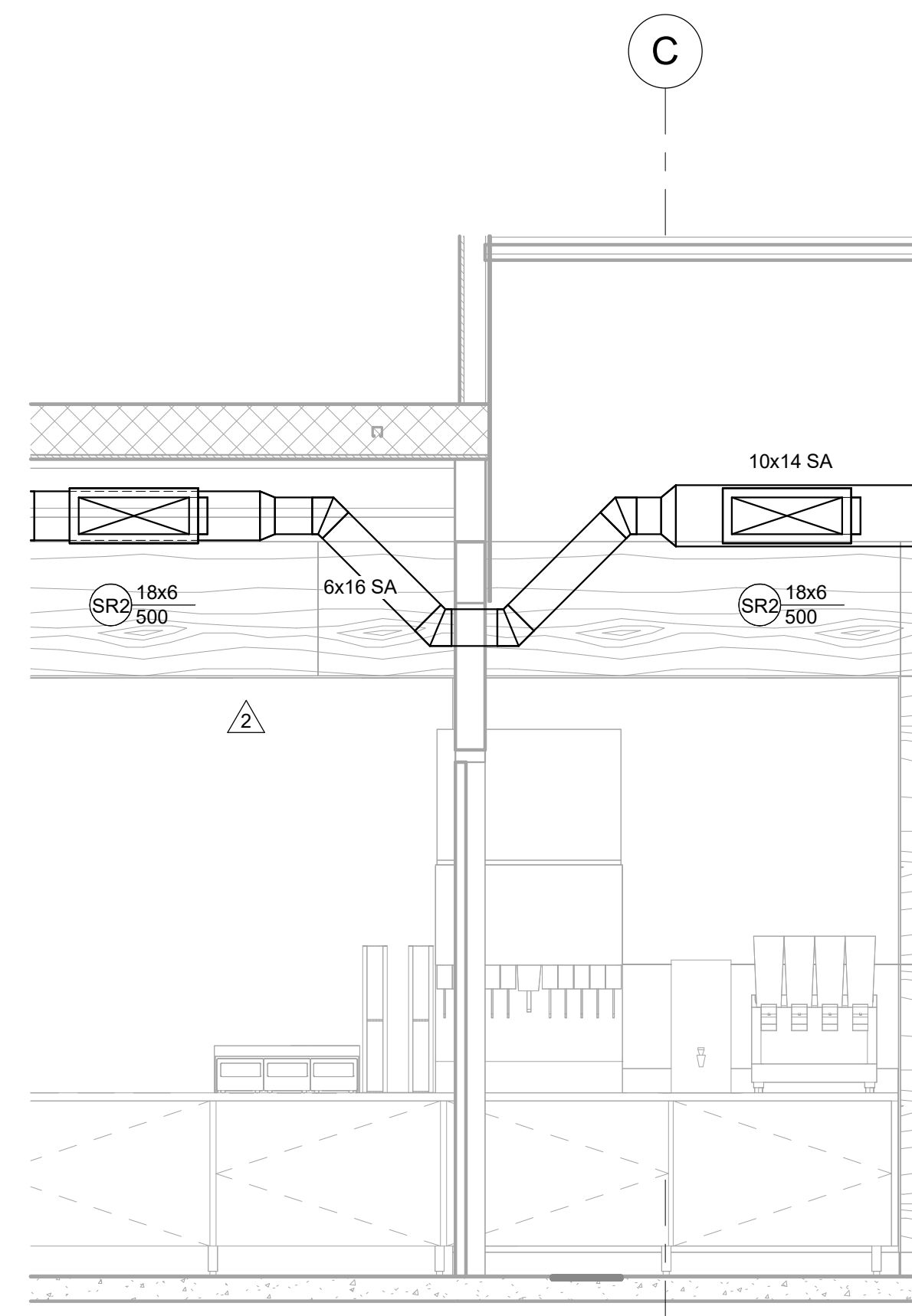
M110



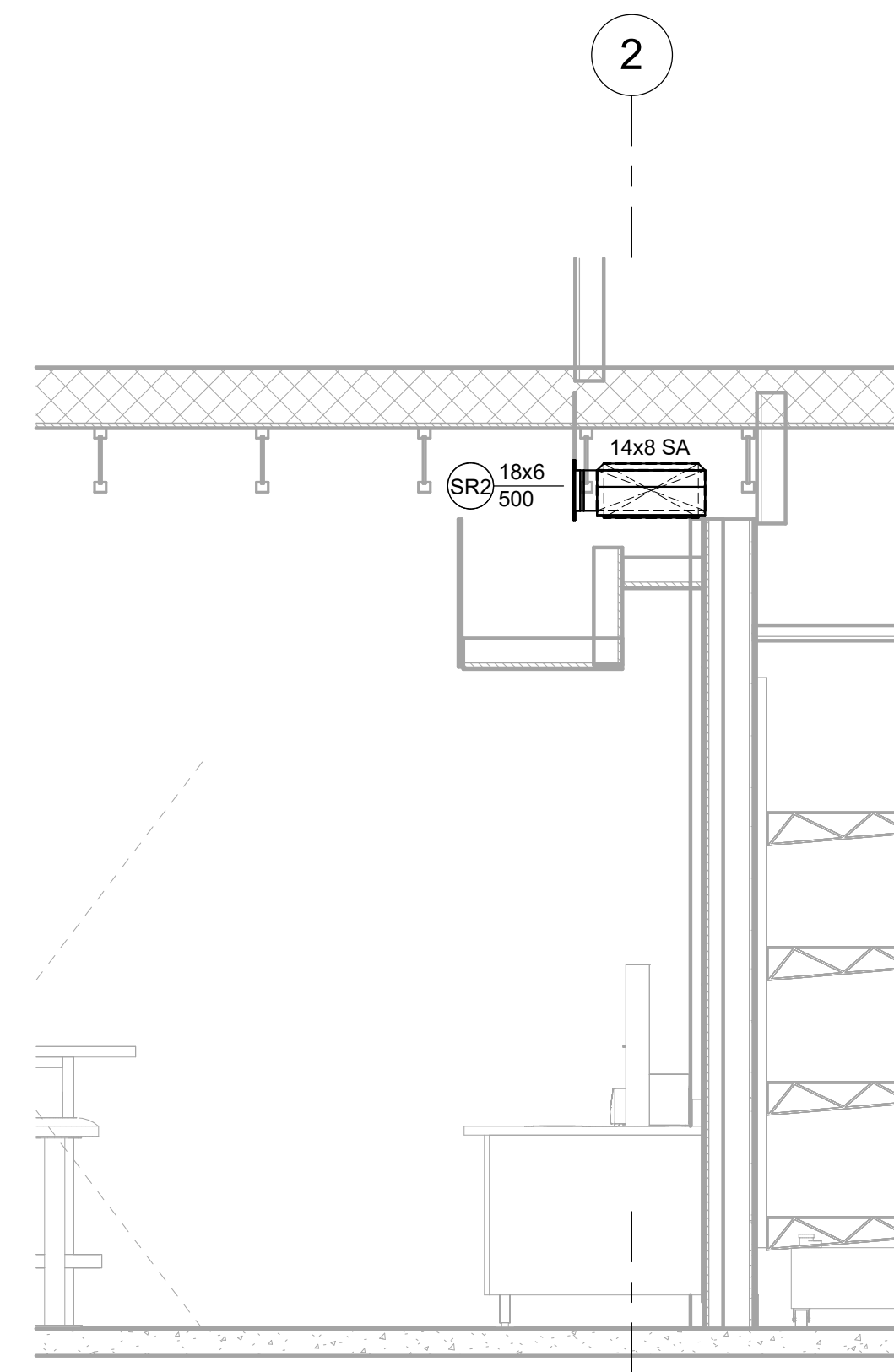
1
M200
HVAC MAIN DINING ROOM SECTION
1/2" = 1'-0"



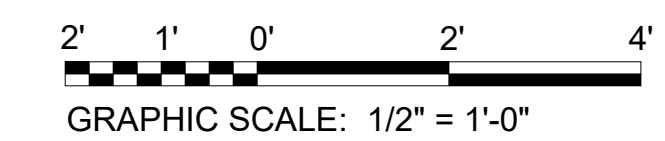
2
M200
HVAC DINING ROOM RETURN SECTION
1/2" = 1'-0"



3
M200
HVAC UTENSIL AREA SECTION NORTH
1/2" = 1'-0"



4
M200
HVAC UTENSIL AREA SECTION WEST
1/2" = 1'-0"



COPYRIGHT 2023
THIS DRAWING IS AN INSTRUMENT OF SERVICE
AND AS SUCH REMAINS THE PROPERTY OF
CHIPOTLE MEXICAN GRILL, INC. PERMISSION FOR
USE OF THIS DOCUMENT IS LIMITED AND CAN BE
EXTENDED ONLY BY WRITTEN AGREEMENT WITH
CHIPOTLE MEXICAN GRILL, INC.



CHIPOTLE MEXICAN GRILL, INC.
PO BOX 182566
COLUMBUS, OH 43218-2566
TELEPHONE: 614.318.2400
INTERNET: WWW.CHIPOTLE.COM

STORE NO.: 4710
TRENT & ARGONNE
8901 E TRENT AVE
MILLWOOD, WA 99212

Issue Record:	
06/06/2023	PERMIT SET
09/06/2023	IFC SET

Revisions:	
2	07/14/2023 PLAN REVIEW COMMENTS
3	07/24/2023 ADDENDUM 1

Drawn: MGC
Checked: WS

Project No.
230356

Contents:
MECHANICAL SECTIONS

TAG	SUPPLY AIRFLOW (CFM)	RETURN AIRFLOW (CFM)	EXHAUST AIRFLOW (CFM)	SUBTOTAL (CFM)
EF-1	0	0	2550	-2550
EF-2	0	0	150	-150
MAU-1	1300	0	0	1300
RTU-1	3400	2650	0	750
RTU-2	3000	2250	0	750
NET PRESSURIZATION				100

2

Room Name	Room Area (Az)	Room Type	Zone Air Distribution Effectiveness (Ez)	Number of People (Pz)	CFM/Person (Rp)	CFM/sqft	Breathing Zone OA (Vbz)	Zone Outdoor Airflow (Voc)	System Ventilation Efficiency (Ev)	Required Outdoor Air Intake (Vot)	Outside Air Provided
RTU-1 - KITCHEN (MULTIPLE ZONE WITH SINGLE RECIRC)											
104 - POS	203	Cafeteria, fast food	0.8	2	7.5	0.18	52	65	0.92	195	750
106 - SERVING	124	Cafeteria, fast food	0.8	2	7.5	0.18	37	47			
107 - COOKING	303	Kitchens (cooking)	0.8	1	5	0.06	4	6			
108 - KITCHEN (FOOD PREP)	193	Cafeteria, fast food	0.8	3	7.5	0.18	57	72			
109 - OFFICE	60	Office spaces	0.8	1	5	0.06	9	11			
Total							155	195			
RTU-2 - DINING (SINGLE ZONE)											
101 - DINING/ORDERING	645	Dining rooms	0.8	51	7.5	0.18	512	640	N/A	646	750
102 - UTENSIL	74	Dining rooms	0.8	0	0	0.06	4	6			
103 - PASSAGE	103	Corridors	0.8	0	0	0.06	4	6			
Total							516	646			

TYPE	APPLICATION	ALLOWABLE MATERIAL
DUCT	CONCEALED, GENERAL EXHAUST	RECTANGULAR OR ROUND AS SHOWN
DUCT	CONCEALED, RETURN	RECTANGULAR OR ROUND AS SHOWN, LINED OR INSULATED
DUCT	CONCEALED, SUPPLY	RECTANGULAR OR ROUND AS SHOWN, LINED OR INSULATED
DUCT	CONCEALED, TYPE I HOOD EXHAUST	RECTANGULAR 16 GA. BLACK IRON WITH WRAP OR UL 1978 FACTORY-MANUFACTURED DUCT WITH WRAP (SUBMIT SHOP DRAWINGS FOR FACTORY-MANUFACTURED DUCT PRIOR TO ORDERING FOR APPROVAL)
DUCT	EXPOSED GENERAL EXHAUST	RECTANGULAR, NO EXPOSED DUCT-SEALING MASTIC
DUCT	EXPOSED RETURN	RECTANGULAR, NO EXPOSED DUCT-SEALING MASTIC
DUCT	EXPOSED SUPPLY	RECTANGULAR LINED OR ROUND AS SHOWN, NO EXPOSED DUCT-SEALING MASTIC

2

TAG	DESCRIPTION	MANUFACTURER	MODEL	MATERIAL	FINISH	MOUNTING	FACE SIZE	NECK SIZE	OPPOSED BLADE DAMPER	SERVICE	MAXIMUM NOISE CRITERIA (NC)	NOTES
BS-1	BATHROOM AIR PURIFICATION UNIT	RGF ENVIRONMENTAL GROUP	BRU ASSEMBLY	STAINLESS STEEL	STAINLESS STEEL	SURFACE	N/A	N/A	PURIFICATION	N/A	1	
CD-1	PERFORATED CEILING DIFFUSER	NAILOR	4320A TYPE L	ALUMINUM	WHITE	LAY-IN	24" X 24"	SEE PLANS	YES	SUPPLY	35	2, 3, 5
CD-2	PERFORATED CEILING DIFFUSER	NAILOR	4320A TYPE L	ALUMINUM	WHITE	SURFACE	24" X 12"	SEE PLANS	YES	SUPPLY	35	2, 3, 4, 5
CD-3	PERFORATED CEILING DIFFUSER	NAILOR	4320A TYPE S	ALUMINUM	WHITE	SURFACE	20" X 20"	SEE PLANS	YES	SUPPLY	35	2, 3, 5
ER-1	PERFORATED CEILING EXHAUST	NAILOR	4330R TYPE S	ALUMINUM	WHITE	SURFACE	12" X 12"	SEE PLANS	YES	EXHAUST	35	2, 3
RG-1	PERFORATED CEILING RETURN	NAILOR	4330R TYPE L	ALUMINUM	WHITE	LAY-IN	48" X 24"	SEE PLANS	NO	RETURN	35	2, 3
RG-3	PERFORATED CEILING RETURN	NAILOR	4330R TYPE S	ALUMINUM	WHITE	SURFACE	48" X 24"	SEE PLANS	NO	RETURN	35	2, 3
SR-1	ADJUSTABLE TURBO NOZZLE	AIRCONCEPTS	ANR14	ALUMINUM	WHITE	WALL	NECK + 1-2"	SEE PLANS	YES	SUPPLY	35	2, 3
SR-2	DOUBLE DEFLECTION SUPPLY REGISTER	NAILOR	51DH	ALUMINUM	WHITE	WALL	NECK + 2"	SEE PLANS	YES	SUPPLY	35	2, 3, 5

- NOTES:
- SEE ELECTRICAL PLAN FOR CONNECTION INFORMATION.
 - MAXIMUM STATIC PRESSURE DROP OF 0.15"WC UNLESS OTHERWISE NOTED.
 - SEE PLANS FOR SIZES AND QUANTITIES.
 - REMOVE 4-WAY DEFLECTORS.
 - PROVIDE WITH INTEGRAL OBD.

TAG	DESCRIPTION	MANUFACTURER	MODEL	NUMBER OF COMPRESSORS	CIRCUITS	REFRIGERANT TYPE	CHARGE	WEIGHT	ELECTRICAL MOCP	FLA	V/PH	NOTES
CU-1	CONDENSING UNIT - WALK IN COOLER	HARFORD	KPCL99MZOP-3E	1	1	R-404A	10.4 LB	250 LBS	15 A	9 A	208/3/60	1, 2
CU-2	REMOTE CONDENSER - LOW CAPACITY ICE MAKER	HOSHIZAKI	URC-9F	0	1	R-404A	11.46 LB	100 LBS			120/1/60	1, 3
CU-3	REMOTE CONDENSER - SODA MACHINE ICE MAKER	HOSHIZAKI	URC-5F	0	1	R-404A	3.86 LB	100 LBS			120/1/60	1, 3

- NOTES:
- EQUIPMENT SPECIFIED BY OTHERS, SHOWN FOR REFERENCE ONLY.
 - FURNISHED WITH WALK-IN COOLER.
 - FURNISHED WITH ICE MAKER.

TAG	DESCRIPTION	MANUFACTURER	MODEL	SERVICE	LOCATION	FAN DATA				ELECTRICAL DATA				NOTES	
						AIRFLOW	E.S.P.	MOUNT	DRIVE	MOTOR POWER	FLA	VOLTAGE	PHASE		
EF-1	UPBLAST UL762 EXHAUST FAN	CAPTIVEAIRE	DU180HFA	KITCHEN HOOD	ROOF	2,550 CFM	1.45"WC	ROOF CURB	DIRECT	2.0 HP	8.3	208	3	1-4, 8-9	
EF-2	DOWNBLAST RESTROOM EXHAUST FAN	CAPTIVEAIRE	DR12HFA	RESTROOMS	ROOF	150 CFM	0.6"WC	ROOF CURB	DIRECT	0.25 HP	2.9	115	1	5-7	

- NOTES:
- WEATHERPROOF DISCONNECT.
 - 20" HIGH VENTED ROOF CURB
 - GREASE DRAIN.
 - ENVIRONMENTAL VIROGUARD HOOD EXHAUST FAN ROOFTOP CONTAINMENT SYSTEM (VG-1).
 - INTEGRAL DISCONNECT.
 - SPEED CONTROL.
 - 26" CURB WITH BACKDRAFT DAMPER.
 - E.S.P. INCLUDES E.S.P. OF EXHAUST PLENUM LISTED IN KITCHEN HOOD SCHEDULE.
 - WITH 45 DEGREE ANGLE WINDBAND EXTENSION.

TAG	DESCRIPTION	MANUFACTURER	MODEL	MAX COOKING TEMP	EXHAUST PLENUM				PERFORATED SUPPLY PLENUMS				# OF LIGHT FIXTURES	WEIGHT	NOTES								
					AIRFLOW	E.S.P.	WIDTH	LENGTH	DUCT COLLARS		MAKEUP AIR PLENUM		HVAC PLENUM										
					#	WIDTH	LENGTH	WIDTH	LENGTH	AIRFLOW	DUCT COLLARS #	WIDTH	LENGTH	AIRFLOW	DUCT COLLARS #	DIAMETER							
HD-1	TYPE 1 CANOPY HOOD WITH PERFORATED MAU AND HVAC SUPPLY PLENUMS	CAPTIVEAIRE	5424 ND-2-ACPSF-F	600 DEG. F.	2,550 CFM	-0.97" WC	4'-3"	12'-9"	3	10"	24"	1'-7"	13'-9"	1,300 CFM	3	6"	2'-4"	700 CFM	6	8"	8	1,150 LBS	1-11

- NOTES:
- 18 GAUGE TYPE 430 STAINLESS STEEL CONSTRUCTION.
 - FURNISHED WITH VAPORPROOF INCANDESCENT LIGHT FIXTURES.
 - 16" TALL HE SS FILTERS.
 - INTEGRAL UTILITY CABINET.
 - ANSUL SYSTEM.
 - DUCT COLLAR TEMPERATURE SENSOR.
 - PREWIRE PACKAGE.
 - SPARE FIRE SYSTEM DRY CONTACT.
 - 4-POLE 20A CONTACTOR.
 - DVC-1 KITCHEN FAN CONTROL CENTER TO ENGAGE ASSOCIATED MAKE-UP AIR UNIT AND EXHAUST FAN AND CONTROL LIGHTS.
 - UL LISTED FIRE SUPPRESSION AND GREASE COLLECTION SYSTEM.

TAG	DESCRIPTION	MANUFACTURER	MODEL	SERVICE	AIRFLOW	E.S.P.	HEATING DATA			ELECTRICAL DATA			WEIGHT	NOTES	
							INPUT	OUTPUT	TEMP RISE	MOTOR POWER	FLA	VOLTAGE	PHASE		
MAU-1	DIRECT-FIRED MAKEUP AIR UNIT	CAPTIVEAIRE	A1-D-250-15D	KITCHEN HOOD	1,300 CFM	0.5"WC	87.2 MBH	80.2 MBH	62 DEG. F.	1.0 HP	3.1	208	3	495 LBS	1-7

- NOTES:
- 12.5:1 MAXIMUM TURNDOWN.
 - FURNISHED WITH DISCONNECT.
 - 20" ROOF CURB.
 - SCREENED INTAKE.
 - WASHABLE ALUMINUM FILTERS.
 - DOWN DISCHARGE SUPPLY AIR.
 - INTERLOCKED WITH KITCHEN HOOD.

TAG	COUNT	DESCRIPTION	MANUFACTURER	MODEL	FURNISHED BY	INSTALLED BY	REMARKS
SB-1	2	BATHROOM AIR PURIFICATION UNIT	RGF ENVIRONMENTAL GROUP	BRU ASSEMBLY	TUV	GC	SEE ELECTRICAL SHEETS FOR CONNECTION INFORMATION
SH-1	2	HVAC AIR PURIFICATION UNIT	RGF ENVIRONMENTAL GROUP	REME-HALO	TUV	GC	SEE DETAIL 6/M700 FOR INSTALLATION INFORMATION.
SI-1	3	ICE MACHINE TREATMENT SYSTEM	RGF ENVIRONMENTAL GROUP	IMS-B-GA	TUV	GC	SEE PLUMBING DRAWINGS FOR INSTALLATION INFORMATION.

TAG	DESCRIPTION	MANUFACTURER	MODEL	NOMINAL CAPACITY	AIRFLOW			COOLING DATA				HEATING DATA			ELECTRICAL DATA			NOTES					
					SUPPLY AIR	OUTSIDE AIR	E.S.P.	REFRIGERANT	EAT (°F)	EWBT (°F)	TOTAL CAPACITY (NET)	SENSIBLE CAPACITY (NET)	EER	IEER	FUEL	INPUT	OUTPUT	MOCP	MCA	VOLTAGE	PHASE		
RTU-1	KITCHEN ROOFTOP UNIT	CARRIER	48CEM12A2M5-6F4C0	10.0 TONS	3,400 CFM	750 CFM	0.8" WC	R-410A	76	66	120.34 MBH	77.3 MBH	11.0	15.0	N. GAS	224 MBH	181 MBH	60	45	208	3	1-9	
RTU-2	DINING ROOM ROOFTOP UNIT	CARRIER	48HCE08A2M5-6F4J0	7.5 TONS	3,000 CFM	750 CFM	0.8" WC	R-410A	80	70	92.77 MBH	57.42 MBH	12.0	13.8	N. GAS	180 MBH	148 MBH	50	41	208	3	1-9	

- NOTES:
- FURNISHED WITH ENTHALPY ECONOMIZER AND BAROMETRIC RELIEF.
 - SMOKE DETECTOR WITH REMOTE KEYED ANNUNCIATOR/RESET.
 - MOTORIZED OUTSIDE AIR DAMPER.
 - MERV-8 FILTERS.
 - ROOF CURB.
 - HAIL GUARD.
 - TOOL-LESS HINGED ACCESS PANELS.
 - UNIT DISCONNECT.
 - UNIT-MOUNTED CONVENIENCE RECEPTACLE.

2

TAG	DESCRIPTION	MANUFACTURER	MODEL	LOCATION	FAN DATA				ELECTRICAL DATA				NOTES
					AIRFLOW	AIR TEMP. RISE	MOUNT	WATTS	AMPS	VOLTAGE	PHASE		
UH-1	CEILING MOUNTED UNIT HEATER	INDEECO	931U04000V	MAIN ENTRY	160 CFM	60 F	CEILING	3000	14.8	208	1	1, 2	

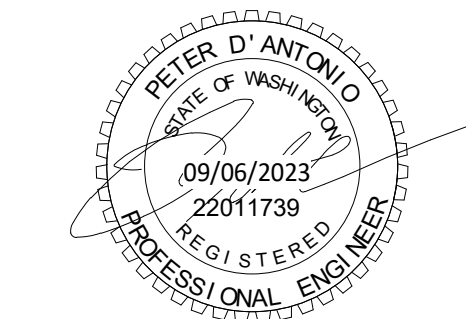
- NOTES:
- PROVIDE WITH BUILT-IN TAMPERPROOF THERMOSTAT.
 - INSTALL UNIT RECESSED INTO VESTIBULE CEILING.

TAG	DESCRIPTION	DUCT CONNECTION SIZE	BASIS FOR DESIGN MANUFACTURER	FAN	SERVICE	FURNISHED BY	INSTALLED BY
VG-1	VIROGUARD HOOD EXHAUST FAN ROOFTOP CONTAINMENT SYSTEM	16" X 16"	ENVIRONMENTAL	CAPTIVE-AIRE DU180HFA	KITCHEN HOOD EXHAUST FAN	TDC	GC

Consultant:

Bowman

PCO ENGINEERING, INC. A BOWMAN COMPANY
 323 3RD AVENUE, #100
 LONGMONT, CO 80501
 TEL: 303.478.1108 FAX: 303.478.1142
 WWW.PCOENGINEERING.COM
 WWW.BOWMAN.COM



COPYRIGHT 2023
 THIS DRAWING IS AN INSTRUMENT OF SERVICE AND AS SUCH REMAINS THE PROPERTY OF CHIPOTLE MEXICAN GRILL, INC.. PERMISSION FOR USE OF THIS DOCUMENT IS LIMITED AND CAN BE EXTENDED ONLY BY WRITTEN AGREEMENT WITH CHIPOTLE MEXICAN GRILL, INC..



CHIPOTLE MEXICAN GRILL, INC.
 PO BOX 182566
 COLUMBUS, OH 43218-2566
 TELEPHONE: 614.318.2400
 INTERNET: WWW.CHIPOTLE.COM

STORE NO.: 4710
 TRENT & ARGONNE
 8901 E TRENT AVE
 MILLWOOD, WA 99212

Issue Record:

06/06/2023 PERMIT SET
 09/06/2023 IFC SET

Revisions:

2 07/14/2023 PLAN REVIEW COMMENTS

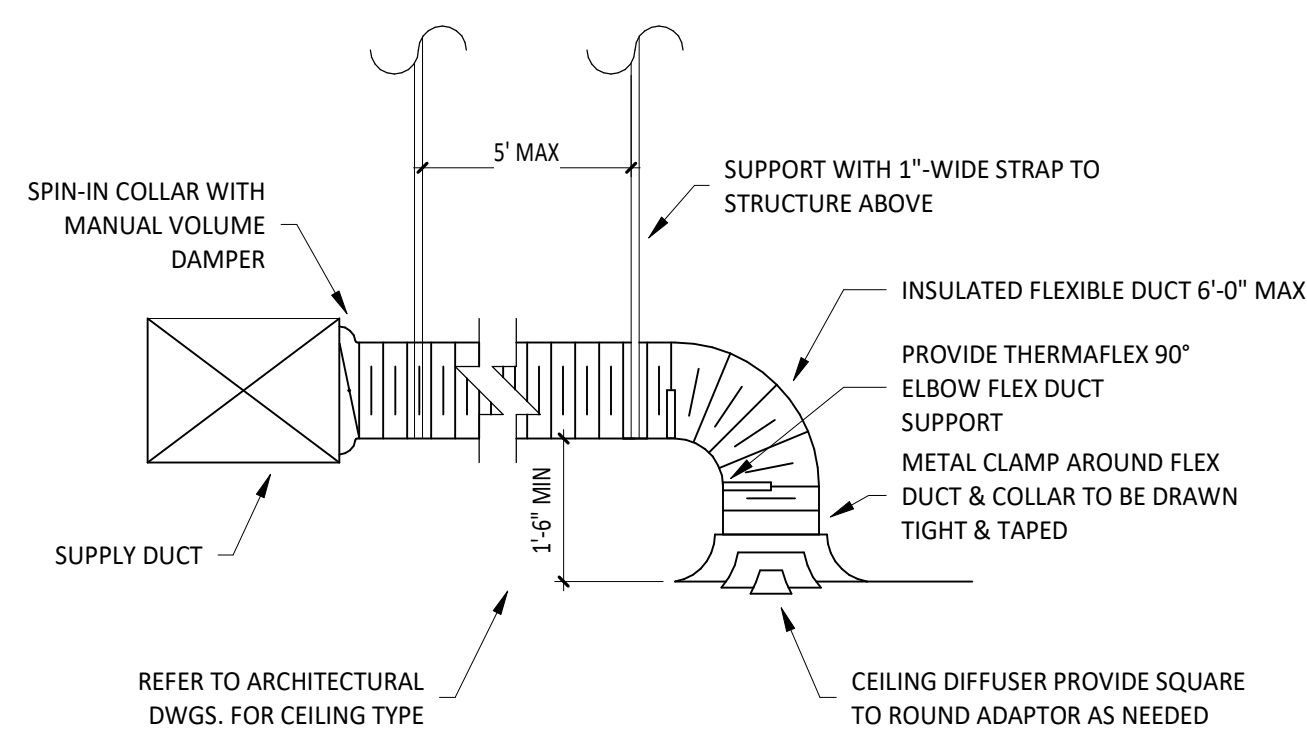
Drawn: MGC Checked: WS

Project No. 230356

Contents:

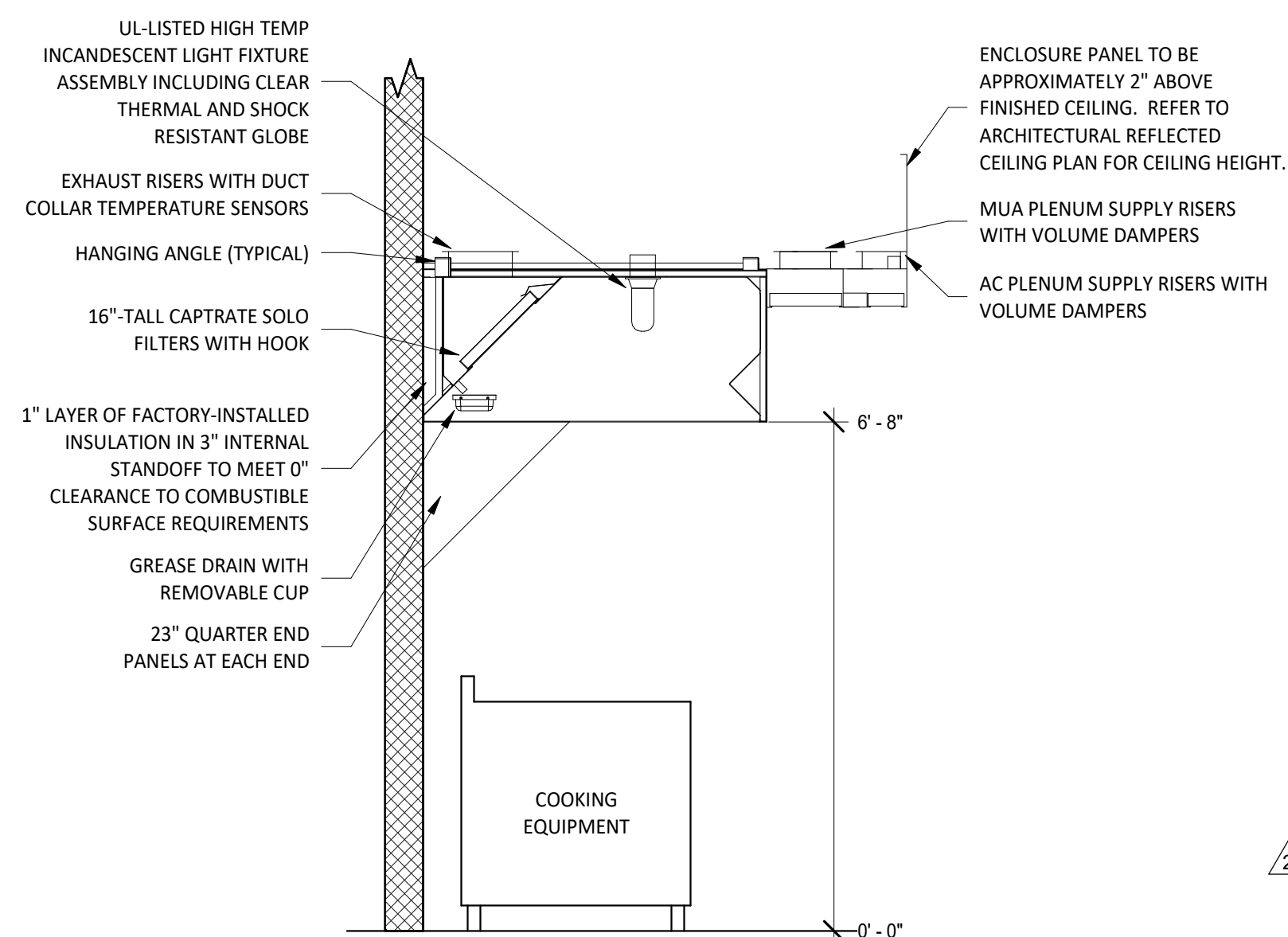
MECHANICAL SCHEDULES

M600



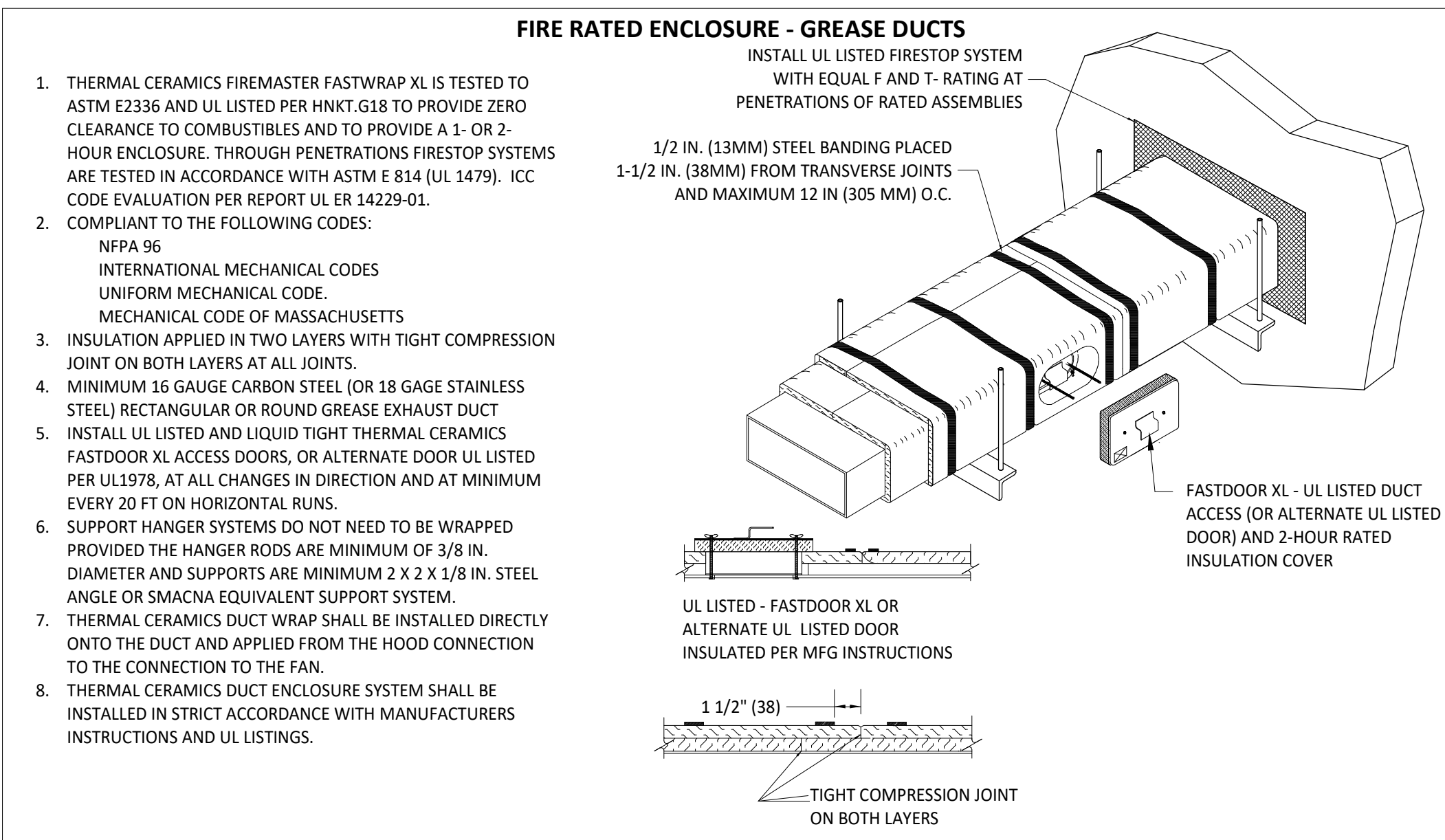
1 DIFFUSER CONNECTION

NOT TO SCALE



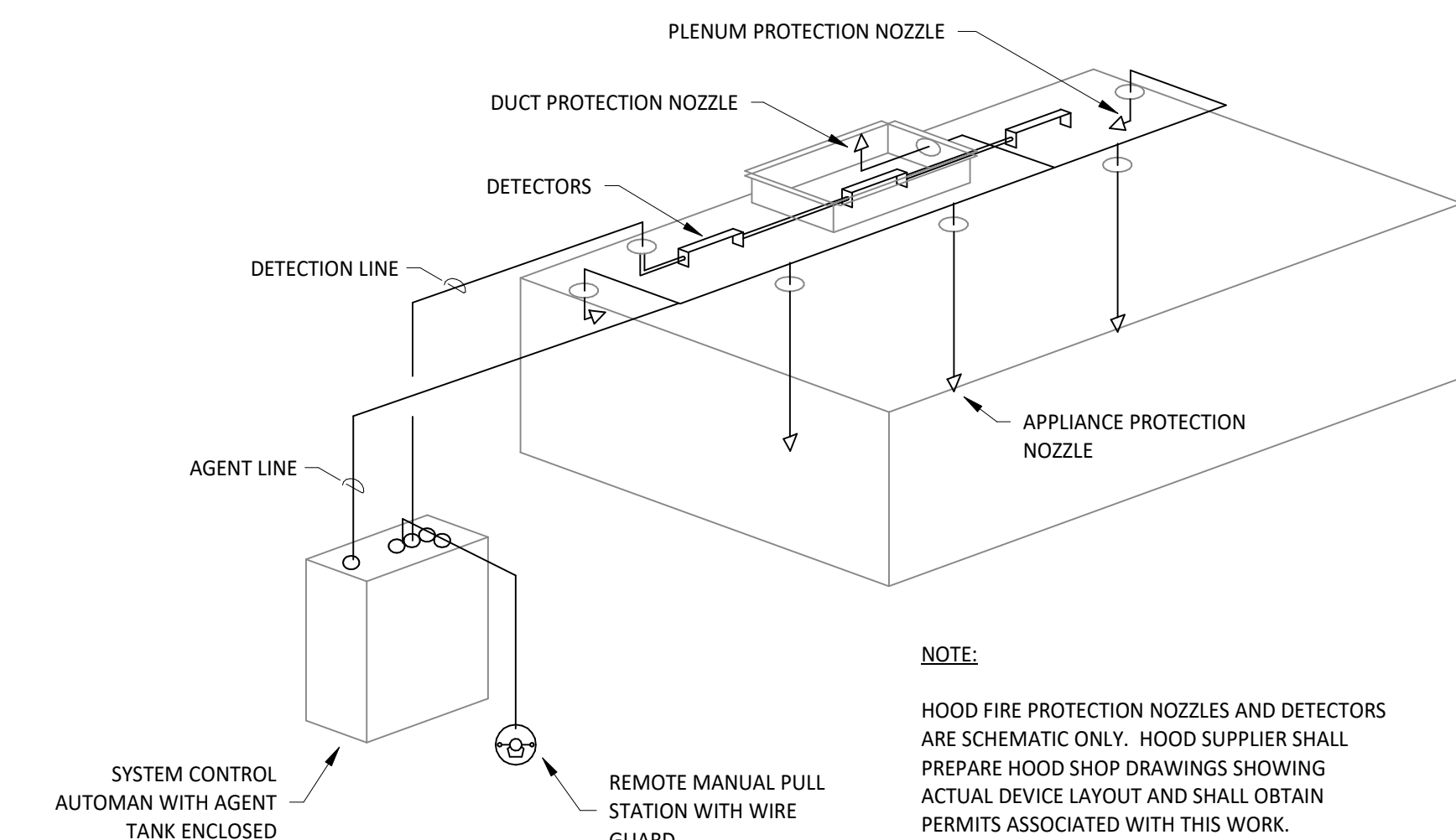
2 HOOD SECTION VIEW

NOT TO SCALE



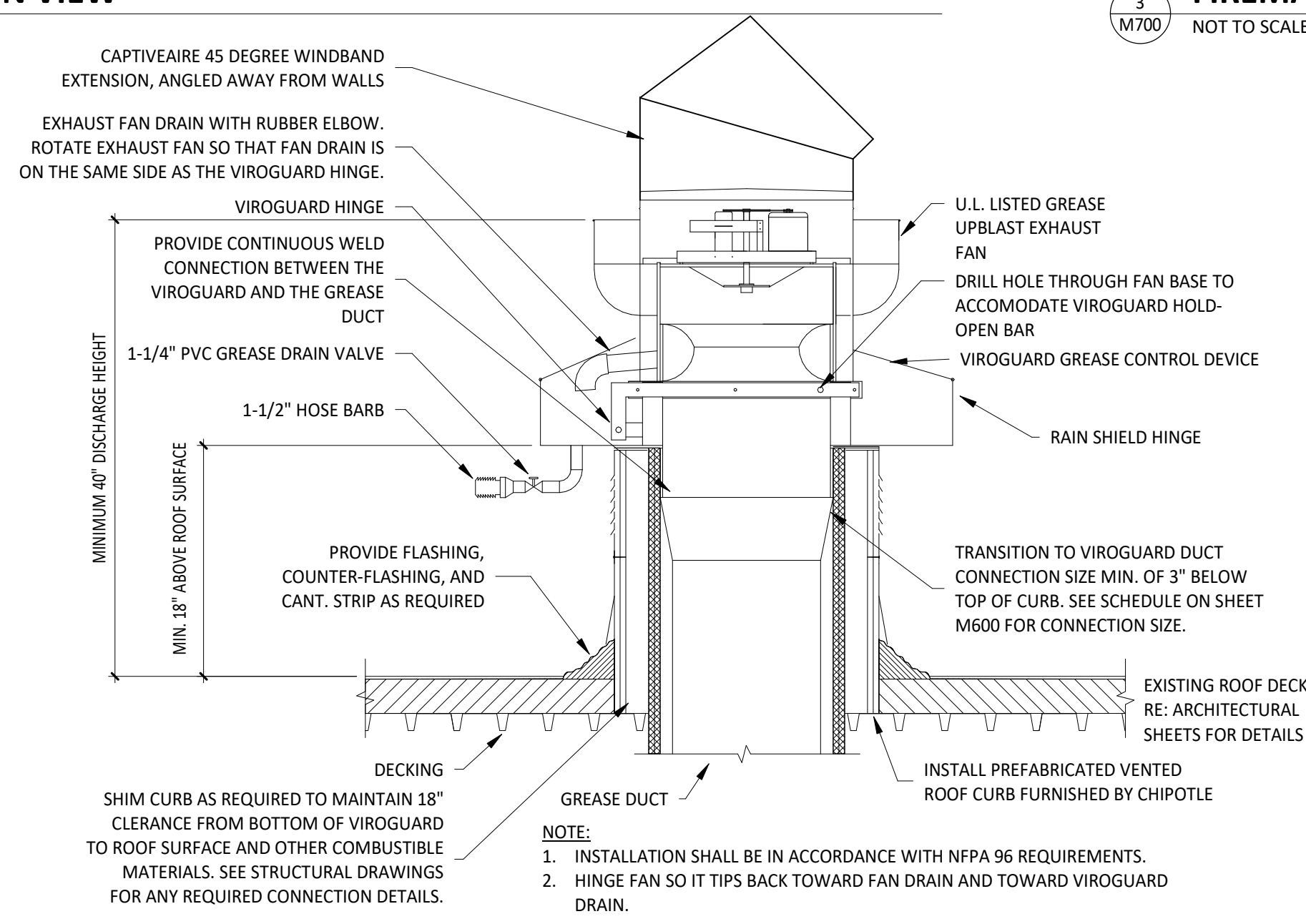
3 FIREMASTER DUCT WRAP - UL HNK-G18

NOT TO SCALE



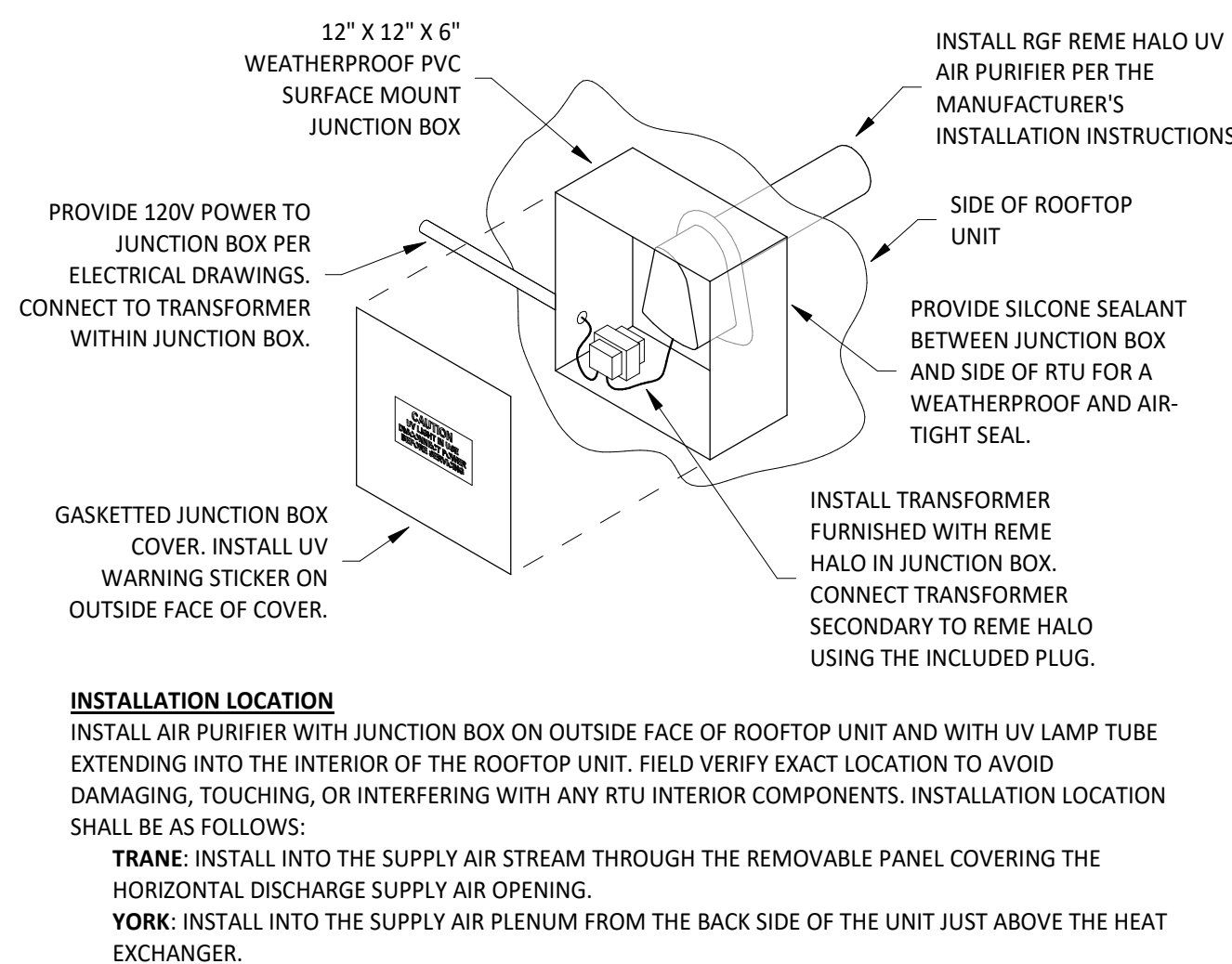
4 FIRE SUPPRESSION SYSTEM SCHEMATIC

NOT TO SCALE



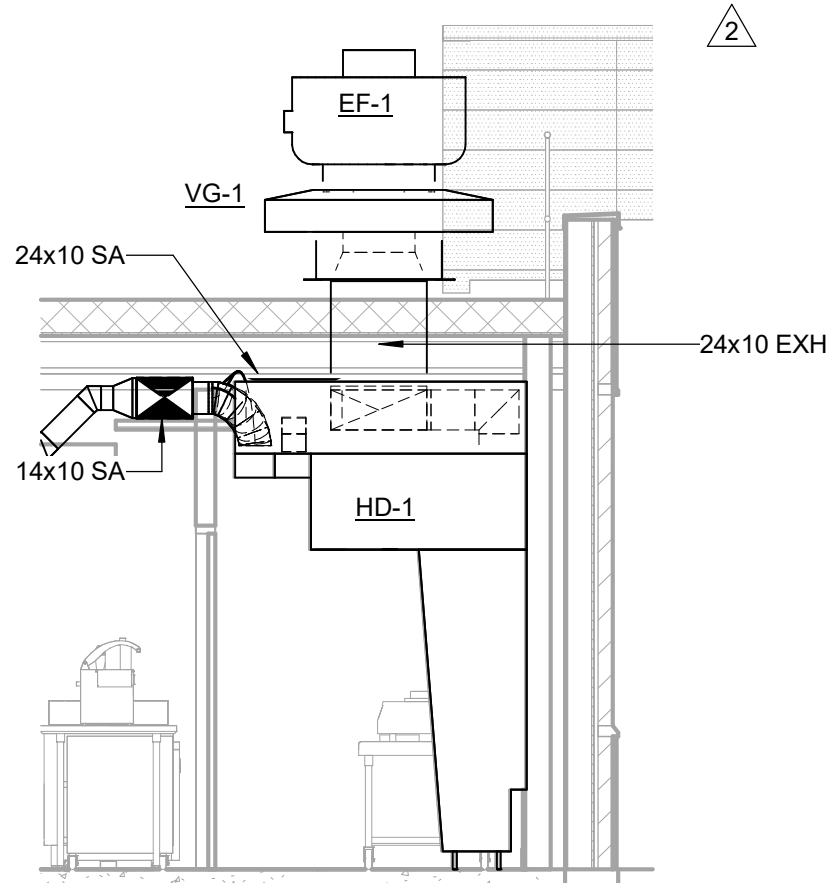
5 GREASE EXHAUST FAN

NOT TO SCALE



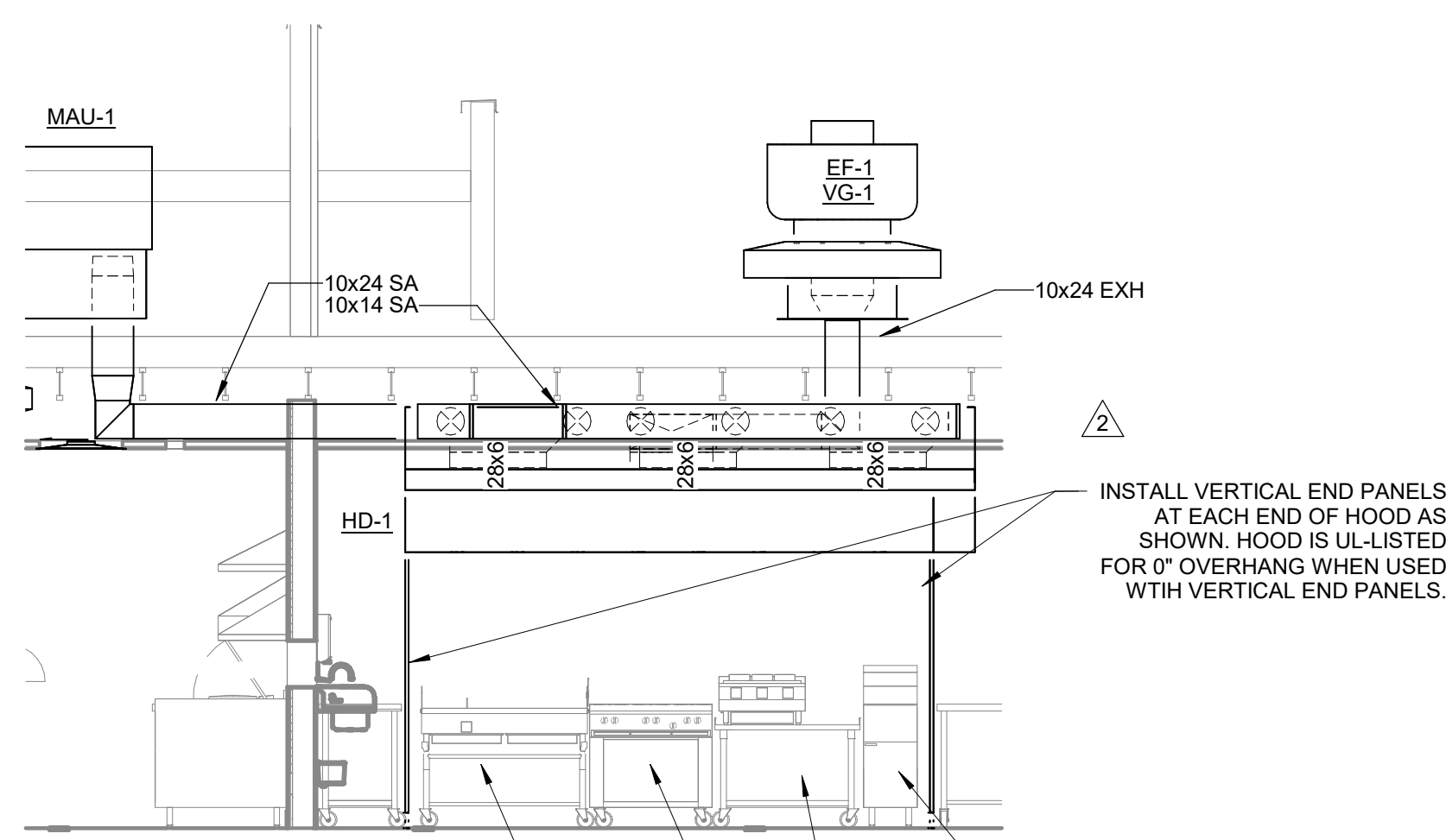
6 UV AIR PURIFIER INSTALLATION

NOT TO SCALE



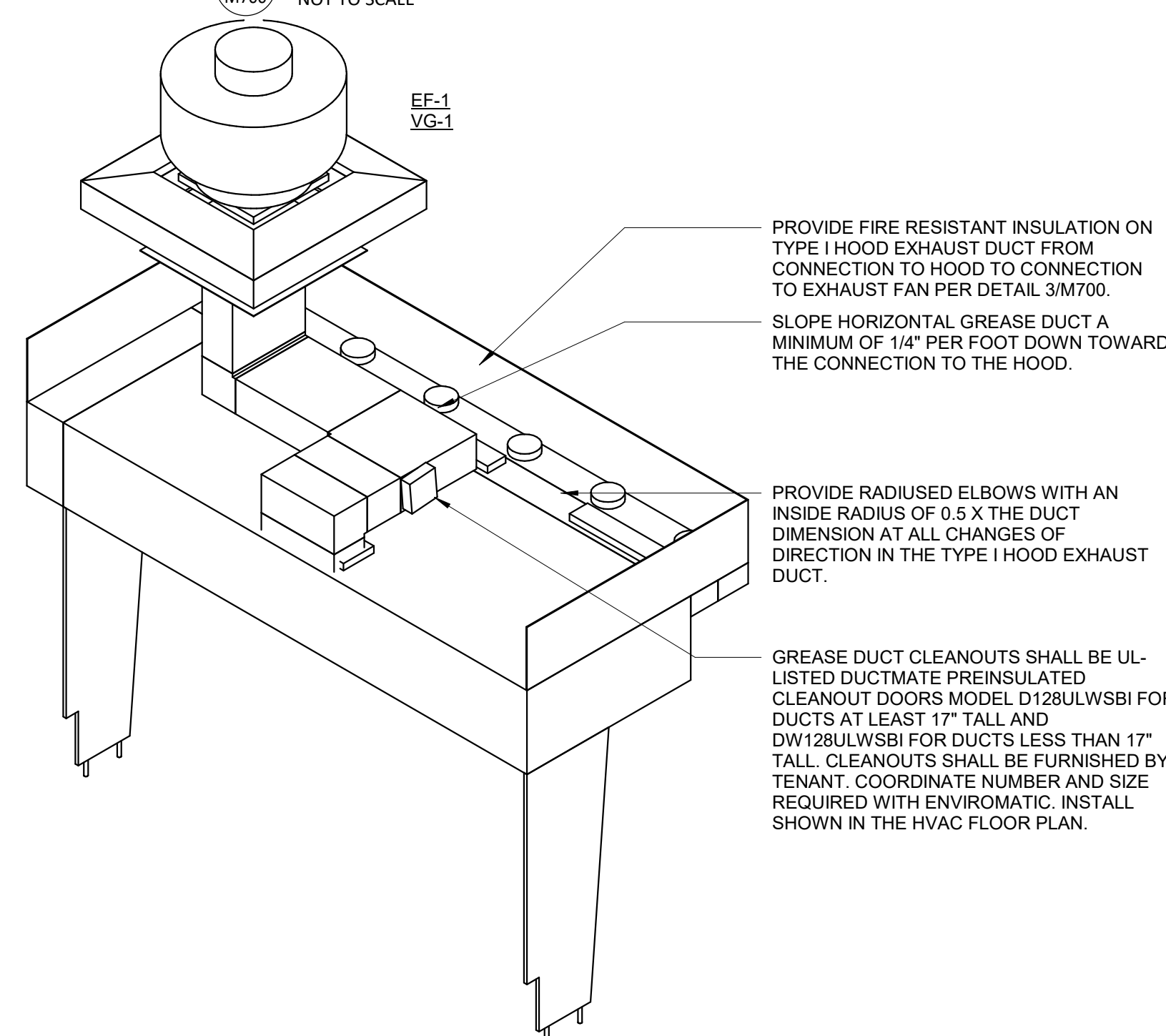
7 DUCT SECTION AT HOOD

NOT TO SCALE



8 HOOD ELEVATION

1/4" = 1'-0"



9 HOOD EXHAUST ISOMETRIC

NOT TO SCALE



COPYRIGHT 2023
THIS DRAWING IS AN INSTRUMENT OF SERVICE AND AS SUCH REMAINS THE PROPERTY OF CHIPOTLE MEXICAN GRILL, INC. PERMISSION FOR USE OF THIS DOCUMENT IS LIMITED AND CAN BE EXTENDED ONLY BY WRITTEN AGREEMENT WITH CHIPOTLE MEXICAN GRILL, INC.



CHIPOTLE MEXICAN GRILL, INC.
PO BOX 182566
COLUMBUS, OH 43218-2566
TELEPHONE: 614.318.2400
INTERNET: WWW.CHIPOTLE.COM

STORE NO.: 4710
TRENT & ARGONNE
8901 E TRENT AVE
MILLWOOD, WA 99212

Issue Record:	DATE	DESCRIPTION
06/06/2023	PERMIT SET	
09/06/2023	IFC SET	

Revisions:	DATE	DESCRIPTION
2	07/14/2023	PLAN REVIEW COMMENTS

Drawn:	Checked:
MGC	WS

Project No.
230356

Contents:
MECHANICAL DETAILS

