



project no. | CMGCE0021

owner



CHIPOTLE MEXICAN GRILL, INC.  
610 NEWPORT CENTER DRIVE,  
SUITE 1300  
NEWPORT BEACH, CA 92660  
WWW.CHIPOTLE.COM

project info

ARENA BOULEVARD CHIPOTLE  
2650 ARENA BLVD.  
SACRAMENTO, CA

issue dates

submission:	Date
permit	02/25/2022
bid	-
revisions:	Date
# Description	Date

designed by: U. SHAIKH  
checked by: Y. ZAKI

seal



sheet info

HVAC  
SPECIFICATIONS  
**M010**

**HVAC GENERAL NOTES**

- A GENERAL NOTES APPLY TO HVAC SHEETS.
- B WORK SHALL COMPLY WITH STATE AND LOCAL CODE REQUIREMENTS AS APPROVED AND AMENDED BY THE AUTHORITY HAVING JURISDICTION, INCLUDING APPLICABLE SECTIONS OF NFPA, THE MECHANICAL CODE, AND ANY INTERIM AMENDMENTS AT THE TIME OF THE PROPOSAL. PURCHASE PERMITS ASSOCIATED WITH THE WORK. OBTAIN INSPECTIONS REQUIRED BY CODE. SEE ARCHITECTURAL SHEETS FOR THE PREVAILING CODES.
- C CONTRACTOR AND SUBCONTRACTORS SHALL REVIEW A COMPLETE SET OF THE CONSTRUCTION DOCUMENTS.
- D COORDINATE WORK WITH THE WORK OF OTHER TRADES, EQUIPMENT FURNISHED BY OTHERS, REQUIREMENTS OF THE OWNER, AND OF THE EXISTING CONDITIONS AT THE PROJECT SITE.
- E DRAWINGS FOR THE MECHANICAL WORK ARE DIAGRAMMATIC, SHOWING THE GENERAL LOCATION, TYPE, LAYOUT, AND EQUIPMENT REQUIRED. THE DRAWING SHALL NOT BE SCALED FOR EXACT MEASUREMENTS, REFER TO ARCHITECTURAL DRAWINGS FOR DIMENSIONS. REFER TO MANUFACTURER'S STANDARD INSTALLATION DRAWINGS FOR EQUIPMENT CONNECTIONS AND INSTALLATION REQUIREMENTS. PROVIDE DUCTWORK, CONNECTIONS, OFFSETS, ACCESSORIES, AND MATERIALS NECESSARY FOR A COMPLETE SYSTEM.
- F DUCT DIMENSIONS ON PLANS INDICATE DIMENSIONS OF INTERNAL FREE AREA.
- G PERFORATED CEILING DIFFUSERS SHALL BE 4-WAY UNLESS NOTED OTHERWISE.
- H COORDINATE ROOF WORK WITH THE OWNER'S CONSTRUCTION MANAGER PRIOR TO CONSTRUCTION.
- I UNLESS NOTED OTHERWISE RECTANGULAR DUCT ELBOWS GREATER THAN 45° SHALL BE MITERED ELBOWS WITH DOUBLE-THICKNESS TURNING VANES AND RECTANGULAR DUCT ELBOWS 45° OR LESS SHALL BE RADIUSSED ELBOWS WITH AN INSIDE RADIUS OF AT LEAST 1/2 THE WIDTH OF THE DUCT.
- J REPLACE AIR FILTERS WITH NEW, CLEAN MERV 8 AIR FILTERS AT TURNOVER.
- K THE TERM "FURNISH" MEANS SUPPLY AND DELIVER TO THE PROJECT SITE, READY FOR UNLOADING, UNPACKING, ASSEMBLY, INSTALLATION, AND SIMILAR OPERATIONS. THE TERM "INSTALL" DESCRIBES THE OPERATIONS AT THE PROJECT SITE INCLUDING THE ACTUAL UNLOADING, UNPACKING, ASSEMBLY, ERECTING, PLACING, ANCHORING, APPLYING, WORKING TO DIMENSION, FINISHING, CURING, PROTECTING, CLEANING, AND SIMILAR OPERATIONS. THE TERM "PROVIDE" MEANS TO FURNISH AND INSTALL, COMPLETE AND READY FOR THE INTENDED USE.
- L PROVIDE LABELING CALLED FOR IN THE HVAC DRAWINGS USING ENGRAVED PHENOLIC PLATES.
- M PROVIDE P3000 12 GA. UNISTRUT WITH PG FINISH FOR DUCT SUPPORTS AND OTHER UNISTRUT IN AREAS EXPOSED TO VIEW. SLOTTED UNISTRUT AND OTHER UNISTRUT WITH HOLES IS NOT ACCEPTABLE.

	APPLICATION	ALLOWABLE MATERIAL
DUCT	CONCEALED, GENERAL EXHAUST	RECT. OR ROUND AS SHOWN
	CONCEALED, RETURN	RECT. OR ROUND AS SHOWN, LINED OR INSULATED
	CONCEALED, SUPPLY	RECT. OR ROUND AS SHOWN, LINED OR INSULATED
	CONCEALED, TYPE I HOOD EXHAUST	RECTANGULAR 16 GA. BLACK IRON W/ WRAP OR UL 1978 FACTORY-MANUFACTURED DUCT W/ WRAP (SUBMIT SHOP DRAWINGS FOR FACTORY-MANUFACTURED DUCT PRIOR TO ORDERING FOR APPROVAL)
	EXPOSED GENERAL EXHAUST	RECTANGULAR, NO EXPOSED DUCT-SEALING MASTIC
	EXPOSED RETURN	RECTANGULAR, NO EXPOSED DUCT-SEALING MASTIC
	EXPOSED SUPPLY	RECT. LINED OR ROUND AS SHOWN, NO EXPOSED DUCT-SEALING MASTIC

**HVAC ABBREVIATIONS**

- (E) EXISTING
- ABV ABOVE
- ADA AMERICANS WITH DISABILITIES ACT
- AFB ABOVE FINISHED FLOOR
- AFG ABOVE FINISHED GRADE
- AHJ AUTHORITY HAVING JURISDICTION
- BFF BELOW FINISHED FLOOR
- BFG BELOW FINISHED GRADE
- BOH BACK OF HOUSE
- CLG CEILING
- CTE CONNECT TO EXISTING
- DN DOWN
- EXT'G EXISTING
- FLR FLOOR
- FOH FRONT OF HOUSE
- GYP GYPSUM BOARD
- NIS NOT TO SCALE
- O/H OVERHEAD
- OSB OPPOSED BLADE DAMPER
- TYP TYPICAL
- U/G UNDERGROUND
- UNO UNLESS NOTED OTHERWISE
- VFD VARIABLE FREQUENCY DRIVE
- VSC VARIABLE SPEED CONTROLLER
- W/ WITH
- WIC WALK-IN COOLER

- CO2AS TENANT'S CO2 ALARM SUPPLIER
- GC GENERAL CONTRACTOR
- HES TENANT'S HVAC EQUIPMENT SUPPLIER
- HS TENANT'S HOOD SUPPLIER
- KES TENANT'S KITCHEN EQUIPMENT SUPPLIER
- LL LANDLORD
- TAB TENANT'S TEST AND BALANCE VENDOR
- TCC TENANT'S CABLING CONTRACTOR
- TDC TENANT'S DUCT CLEANER
- TEMS TENANT'S ENERGY MANAGEMENT SYSTEM SUPPLIER
- TLS TENANT'S LIGHT/LAMP SUPPLIER
- TMB TENANT'S MENU BOARD SUPPLIER
- TMS TENANT'S MILLWORK SUPPLIER
- TP TENANT'S PHONE SUPPLIER
- TRS TENANT'S RAILING SUPPLIER
- TSV TENANT'S SIGN VENDOR
- TUV TENANT'S UV SMARTIZER SUPPLIER
- WCS TENANT'S WALK-IN COOLER SUPPLIER
- WHS TENANT'S WATER HEATER SUPPLIER

**HVAC SYMBOLS**

- CEILING DIFFUSER
- CEILING-MOUNTED RETURN OR EXHAUST REGISTER
- SUPPLY REGISTER
- RETURN GRILLE
- FLEXIBLE DUCT
- MITERED CORNER WITH TURNING VANES
- DUCTWORK INTERNAL FREE DIMENSIONS (WIDTH/HEIGHT) RECTANGULAR TO ROUND DUCT TRANSITION
- DUCT-MOUNTED SMOKE DETECTOR
- MOTOR-OPERATED DAMPER
- MANUAL VOLUME DAMPER
- GREASE DUCT CLEANOUT
- MITERED CORNER WITHOUT TURNING VANES
- GRIDPOINT THERMOSTAT
- GRIDPOINT ZONE SENSOR MODULE
- GRIDPOINT SUPPLY PROBE
- PLAN NOTE: SEE PLAN NOTES LISTED ON THE SAME SHEET FOR NOTE MEANING
- CONNECT TO EXISTING
- EQUIPMENT TAG: SEE EQUIPMENT SCHEDULE ON SHEET M600 FOR EQUIPMENT INFORMATION
- AUDIO/VISUAL REMOTE SMOKE DETECTOR ANNUNCIATOR WITH REMOTE KEY OPERATED RESET
- GRILL, REGISTER, OR DIFFUSER TAG: TAG NECK SIZE AIRFLOW [CFM]

SECTION 15732 - PACKAGED ROOFTOP AIR-CONDITIONING UNITS

PART 1 - GENERAL

1.1 SECTION REQUIREMENTS

- A Submittals: Product Data and Shop Drawings.
- B Comply with ASHRAE 15.
- C EER: Equal to or greater than prescribed by the energy code adopted by the Authority Having Jurisdiction.
- D Warranties: Submit a written warranty, signed by the manufacturer, agreeing to the repair or replacement of components that fail within 5 years of Substantial Completion.

PART 2 - PRODUCTS

2.1 PACKAGED UNITS, 5 TO 20 TONS

- A. Factory assembled and tested, consisting of compressors, condensers, evaporator coils, condenser and evaporator fans, refrigeration and temperature controls, filters, and dampers.
  - 1. Refer to Rooftop Heating/Cooling Unit Schedule on drawing M600 for capacities, and manufacturers.
  - 2. Evaporator Fans: Belt or direct driven, forward curved centrifugal.
  - 3. Exhaust/Relief Fans: Direct drive, forward curved centrifugal or propeller.
  - 4. Condenser Fans: Direct drive propeller.
  - 5. Refrigerant Coils: Aluminum fins and copper coil.
  - 6. Compressors: Serviceable hermetic or fully hermetic, with safety controls, hot gas bypass, and timed off controls.
  - 7. Heat Exchangers: Gas fired, with gas controls, electronic ignition, high limit cutout, and forced draft proving switch.
  - 8. Economizer controls (Comparative Enthalpy, 100% capacity).
  - 9. Smoke Detectors: Photoelectric in supply and/or return as called for in schedule on sheet M600.
  - 10. Operating Controls: Two stage heating and two stage cooling on units 7-1/2 tons and over.
  - 11. Roof curb.
  - 12. Control Wiring from T-stat to rooftop unit: Shall be 18ga / 7 conductor, rated for plenum applications.
  - 13. Control Wiring from T-stat to remote sensor: Shall be a separate 18ga / 2 conductor shielded, rated for plenum applications.

PART 3 - EXECUTION

3.1 INSTALLATION

- A. Install units level and plumb and firmly anchored.
- B. Connect gas piping to burner with pipe same size as gas train inlet, and provide union with sufficient clearance for burner removal and service.
- C. Install ducts to termination in roof mounting frames. Terminate ducts through roof structure.
- D. Connect units to wiring systems and to ground.

END OF SECTION 15732

SECTION 15810 - DUCTS AND ACCESSORIES

PART 1 - GENERAL

1.1 SECTION REQUIREMENTS

- A. Submittals: Product Data for fire and smoke dampers.
- B. Comply with NFPA 90A for systems serving spaces more than 25,000 cu. ft. in volume or building Types II, IV, and V construction more than 3 stories in height.
- C. Comply with NFPA 90B for systems serving spaces in 1 or 2 family dwellings or serving spaces less than 25,000 cu. ft..
- D. Comply with NFPA 96, "Ventilation Control and Fire Protection of Commercial Cooking Operations," for kitchen hood ducts.
- E. Comply with UL 181 and UL 181A for ducts and closures.
- F. Testing, Adjusting, and Balancing Agency Qualifications: AABC certified (to be furnished by Tenant).

PART 2 - PRODUCTS

2.1 DUCTS

- A. Spiral Duct: Spiral Lock Seam, without insulation, G90 galvanized finish, ASTM A-653/924
  - 1. Basis of Design Manufacturers: Lindab SPIROsafe, alternates to the basis of design must be submitted for review.
  - 2. Fittings: Factory produced standing seam construction with internal sealing. Fittings with a major axis of 36" or smaller shall be 20 gauge. Fittings with a major axis of 37"-48" shall be 18 gauge.
- B. Galvanized Steel Sheet: Forming steel, ASTM A 653/653M, G90 coating designation.
- C. Duct Liner: ASTM C 1071, Type II, with an airstream surface coated with a temperature resistant coating. Thickness: 1-1/2 inch. R-value : 8.
  - 1. Adhesive: ASTM C 916, Type I.
  - 2. Mechanical Fasteners: Galvanized steel pin, length as required to penetrate liner plus a 1/8 inch projection maximum into the airstream.
- D. Joint and Seam Tape: Comply with UL 181A.
- E. Joint and Seam Sealant: Comply with UL 181A.
- F. Rectangular Metal Duct Fabrication: Comply with SMACNA's "HVAC Duct Construction Standard" for metal thickness, reinforcing types and intervals, tie rod applications, and joint types and intervals.

2.2 ACCESSORIES

- A. Volume-Control Dampers: Factory fabricated volume control dampers, complete with required hardware and accessories. Single blade and multiple opposed blade, standard leakage rating, and suitable for horizontal or vertical applications.
- B. Fire Dampers: Factory-fabricated fire dampers, complete with required hardware and accessories. UL labeled according to UL 555, "Fire Dampers".
- C. Flexible Connectors: Flame retardant or noncombustible fabrics, coatings, and adhesives complying with UL 181, Class 1.
- D. Flexible Ducts: Factory fabricated, insulated, round duct, with an outer jacket enclosing 2 inch thick, glass fiber insulation, R-value: 6.0, around a continuous inner liner.

END OF SECTION 15810

SECTION 15855 - DIFFUSERS, REGISTERS, AND GRILLES

PART 1 - GENERAL

1.1 SECTION REQUIREMENTS

- A. Submittals: None.

PART 2 - PRODUCTS

2.1 OUTLETS AND INLETS

- A. All air terminal devices:
  - 1. Refer to Grills, Registers, and Diffusers Schedule for equipment schedule
  - 2. Manufacturer: As scheduled (NO SUBSTITUTIONS)
  - 3. Material: As scheduled.
  - 4. Finish: As scheduled.
  - 5. Mounting: As scheduled.

PART 3 - EXECUTION

3.1 INSTALLATION

- A. Coordinate location and installation with duct installation and installation of other ceiling and wall mounted items.
- B. Locate ceiling diffusers, registers, and grilles, as indicated on the architectural "reflected ceiling plans." Unless otherwise indicated, locate units in center of acoustical ceiling panels.

END OF SECTION 15855



submission:	Date
permit	02/25/2022
bid	
revisions:	Date
# Description	
1 Rev-1 Plan Check Comments & Client changes	08/29/22

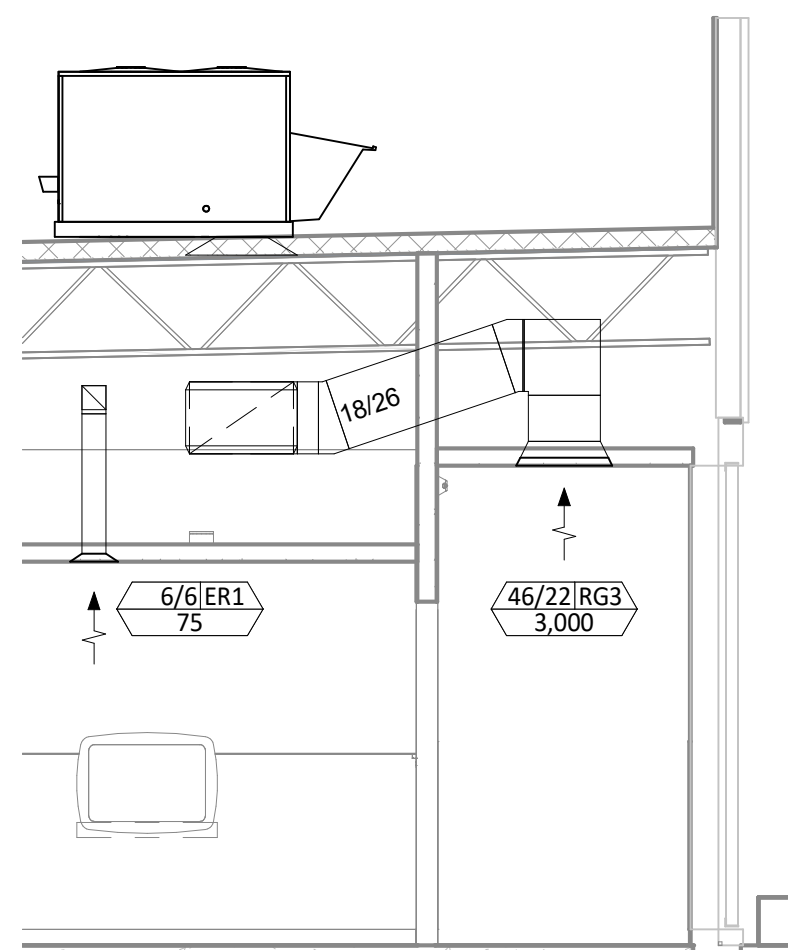


**HVAC PLAN NOTES**

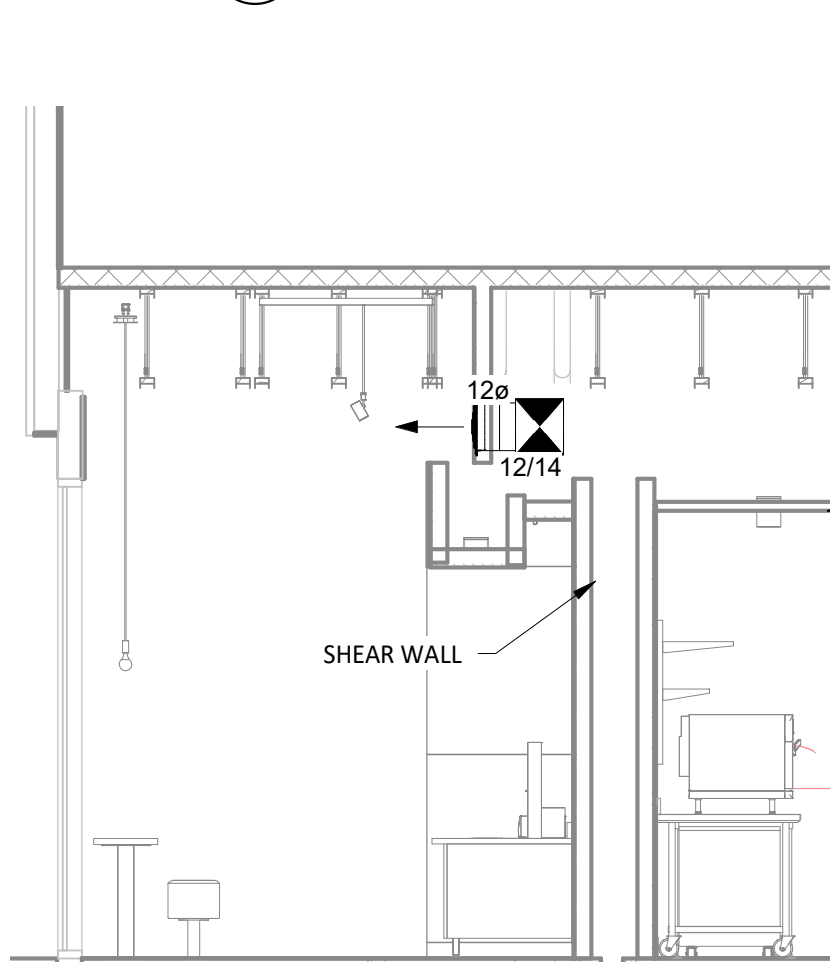
- SEE ARCHITECTURAL REFLECTED CEILING PLAN FOR CEILING MOUNTED EQUIPMENT LOCATION. TYPICAL.
- PAINT DUCTWORK VISIBLE THROUGH DINING ROOM SUPPLY REGISTERS BLACK. TYPICAL.
- PENETRATIONS THROUGH SHEAR WALL SHALL BE LIMITED TO 10" DIAMETER (OR A GROUP OF PENETRATIONS ALL CONTAINED WITHIN 10" DIAMETER). IF LARGER PENETRATIONS OR GROUPS OF PENETRATIONS ARE REQUIRED COORDINATE WITH STRUCTURAL ENGINEER FOR APPROPRIATE BRACING. SEE STRUCTURAL DRAWINGS FOR SHEAR WALL LOCATION.
- 26/14 DUCT UP FOR TRANSITION TO RTU-1 RETURN CONNECTION IN ROOF CURB.
- 26/18 DUCT UP FOR TRANSITION TO RTU-2 RETURN CONNECTION IN ROOF CURB.
- 26/14 DUCT UP FROM BUILDING SUPPLY THROUGH ROOF. TRANSITION TO RTU-1 SUPPLY CONNECTION IN ROOF CURB. RTU-1 SHALL HAVE AN INTEGRAL SMOKE DETECTOR MOUNTED IN THE SUPPLY AIR STREAM. INTERLOCK SMOKE DETECTOR TO RTU-1 OPERATION.
- 26/18 DUCT UP FROM BUILDING SUPPLY TO RTU-2 SUPPLY CONNECTION. TRANSITION IN ROOF CURB. RTU-2 SHALL HAVE AN INTEGRAL SMOKE DETECTOR MOUNTED IN THE SUPPLY AIR STREAM. INTERLOCK SMOKE DETECTOR TO RTU-2 OPERATION.
- 16/16 DUCT UP THROUGH ROOF. TRANSITION TO MAU-1 SUPPLY CONNECTION IN ROOF CURB.
- 10/15 DUCTS UP FROM HOOD TO 20/15 DUCT THROUGH ROOF TO EF-1 COMPLIANT WITH NFPA 96. PROVIDE RADIUS ELBOWS WITH AN INSIDE RADIUS OF 0.5W AT ELBOWS IN GREASE DUCT.
- 8/6 DUCT UP THROUGH ROOF TO EF-2.
- 24/10 DUCT DOWN TO MAKEUP AIR PSP DUCT CONNECTION. TRANSITION TO SUPPLY PLENUM OPENING SIZE. TYPICAL FOR 4.
- 8" DIA. DUCT DOWN TO AC PSP DUCT CONNECTION. TRANSITION TO SUPPLY PLENUM OPENING SIZE. TYPICAL. CAP UNUSED DUCT CONNECTIONS.
- INSTALL GRIDPOINT THERMOSTATS FURNISHED BY TEMS FOR RTU-1 AND RTU-2 AT THIS LOCATION AT 48" AFF. COORDINATE WITH ELECTRICAL SWITCHING IN THIS AREA. PROVIDE WIRING AS SHOWN IN DETAIL 8/E710.
- INSTALL GRIDPOINT ZONE SENSOR MODULE FURNISHED BY TEMS FOR RTU-1 AT THIS LOCATION 60" AFF DIRECTLY TO WALL (NO JUNCTION BOX). COORDINATE LOCATION WITH EQUIPMENT. PROVIDE WIRING AS SHOWN IN DETAIL 8/E710.
- INSTALL GRIDPOINT ZONE SENSOR MODULE FURNISHED BY TEMS FOR RTU-2 AT THIS LOCATION 66" AFF DIRECTLY TO WALL (NO JUNCTION BOX). COORDINATE LOCATION WITH EQUIPMENT. PROVIDE WIRING AS SHOWN IN DETAIL 8/E710.
- INSTALL GRIDPOINT SUPPLY PROBE FURNISHED BY TEMS FOR RTU-1 IN THE SUPPLY DUCTWORK UPSTREAM FROM THE FIRST BRANCH CONNECTION. PROVIDE WIRING AS SHOWN IN DETAIL 8/E710.
- INSTALL GRIDPOINT SUPPLY PROBE FURNISHED BY TEMS FOR RTU-2 IN THE SUPPLY DUCTWORK UPSTREAM FROM THE FIRST BRANCH CONNECTION. PROVIDE WIRING AS SHOWN IN DETAIL 8/E710.
- INSTALL REMOTE TEMPERATURE SENSOR FOR HOOD HD-1 AT THIS LOCATION 66" AFF. COORDINATE LOCATION WITH EQUIPMENT. PROVIDE (2) #18 G. THERMISTOR CABLE FROM TEMPERATURE SENSOR TO HOOD CONTROL PANEL.
- INSTALL KITCHEN HOOD, HD-1. SUPPORT HOOD PER MANUFACTURER'S INSTALLATION INSTRUCTIONS AND AS DETAILED IN THE ARCHITECTURAL AND STRUCTURAL DRAWINGS. INSTALL HOOD ACCORDING TO THE REQUIREMENTS OF ITS LISTING, IN COMPLIANCE WITH NFPA 96, THE BUILDING CODE, AND AUTHORITIES HAVING JURISDICTION. HOOD SHALL HAVE AN INTEGRAL DUCT COLLAR TEMPERATURE SENSOR TO AUTOMATICALLY ENERGIZE THE EXHAUST AND MAKEUP AIR FANS IF COOKING TEMPERATURES ARE DETECTED. EXHAUST DUCT SYSTEM TO BE WELDED OR FACTORY-MANUFACTURED WATER AND AIR TIGHT. INSTALL CLEANOUTS PER CODE AND AS SHOWN. INSTALL HOOD PER DETAILS 2 AND 4/M700. CHIPOTLE WILL PROVIDE AN INDEPENDENT TESTING AGENCY FOR TESTING THE INTEGRITY OF THE GREASE DUCT SYSTEM.

**HVAC PLAN NOTES**

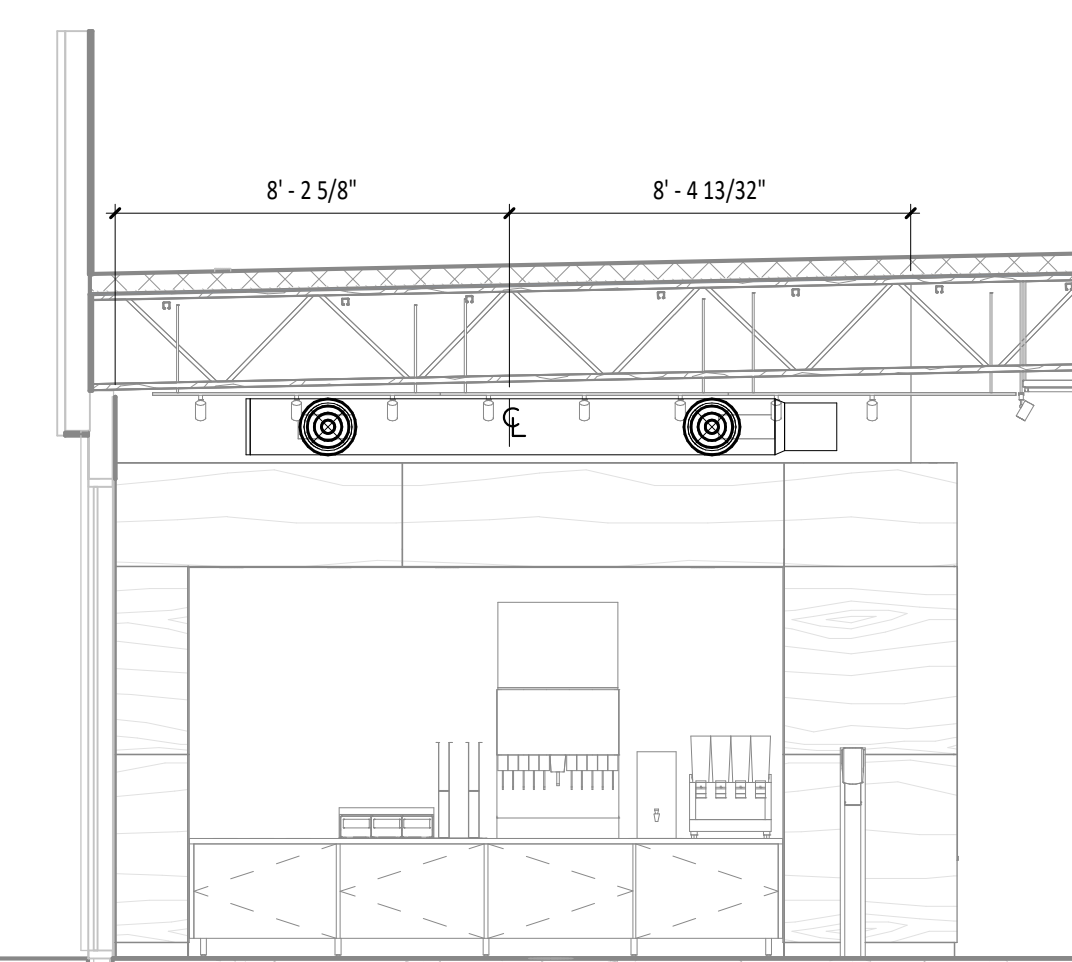
- INSTALL REMOTE CONDENSING UNIT FOR WALK-IN COOLER ON ROOF AS DETAILED IN THE ARCHITECTURAL AND STRUCTURAL DRAWINGS. INSTALL REFRIGERANT LINE SET, THERMOSTATIC EXPANSION VALVE, SOLENOID VALVE, TEMPERATURE CONTROL, SIGHT GLASS, FILTER DRIER, PRESSURE CONTROL, LOW AMBIENT CONTROLS, AND WEATHERPROOF HOUSING. TRAP AND SLOPE REFRIGERANT LINES PER MANUFACTURER'S RECOMMENDATIONS. INSTALLATION SHALL COMPLY WITH ASHRAE/ANSI STANDARD 15. INSTALL THE REFRIGERANT LINE SET UNDER THE ROOF DECK TO WITHIN 3' OF THE CONDENSING UNIT. CUT 2-1/2" HOLE IN WALK-IN COOLER ROOF FOR REFRIGERANT LINE SET AND SEAL PER THE COOLER MANUFACTURER'S INSTALLATION INSTRUCTIONS AFTER LINE SET IS INSTALLED.
- INSTALL REMOTE CONDENSER FOR ICE MACHINE ON ROOF AS DETAILED IN THE ARCHITECTURAL AND STRUCTURAL DRAWINGS. INSTALL REFRIGERANT LINE SET, THERMOSTATIC EXPANSION VALVE, SOLENOID VALVE, TEMPERATURE CONTROL, SIGHT GLASS, FILTER DRIER, PRESSURE CONTROL, LOW AMBIENT CONTROLS, AND WEATHERPROOF HOUSING. TRAP AND SLOPE REFRIGERANT LINES PER MANUFACTURER'S RECOMMENDATIONS. SEAL PIPING PENETRATIONS THROUGH ROOF. INSTALLATION SHALL COMPLY WITH ASHRAE/ANSI STANDARD 15. INSTALL THE REFRIGERANT LINE SET UNDER THE ROOF DECK TO WITHIN 3' OF THE REMOTE CONDENSER. IF REFRIGERANT PIPING TO ICE MAKER IS EXPOSED TO PUBLIC VIEW CONCEAL WITHIN A STAINLESS STEEL SHROUD AS SHOWN IN THE ARCHITECTURAL DRAWINGS.
- INSTALL ROOFTOP EQUIPMENT PER MANUFACTURER'S INSTALLATION INSTRUCTIONS AND AS DETAILED IN THE ARCHITECTURAL AND STRUCTURAL DRAWINGS.
- INSTALL EXHAUST FAN EF-1 PER DETAIL 5/M700 AND AS DETAILED IN THE ARCHITECTURAL AND STRUCTURAL DRAWINGS. INSTALL GREASE VIREGUARD SYSTEM FURNISHED BY CHIPOTLE ON EXHAUST FAN, EF-1.
- PROVIDE SUPPLY DIFFUSER CONNECTION TO SUPPLY SYSTEM PER DETAIL 1/M700. TYPICAL.
- PROVIDE AUDIO/VISUAL REMOTE SMOKE DETECTOR ANNUNCIATOR WITH REMOTE KEY OPERATED RESET. WIRE A UNIT BACK TO EACH SMOKE DETECTOR. MOUNT UNIT 60" AFF. TYPICAL.
- INSTALL REME HALO AIR PURIFIER FURNISHED BY TUV IN RTU PER DETAIL 6/M700. SEE ELECTRICAL DRAWINGS FOR POWER CONNECTION INFORMATION. INSTALL UV WARNING STICKERS ON FACE OF ENCLOSURE PER DETAIL AND ON ANY RTU ACCESS DOOR(S) THROUGH WHICH THE REME HALO WOULD BE VISIBLE IF OPENED.
- MAINTAIN 10" CLEARANCE BETWEEN WATER HEATER FLUE TERMINATION AND OUTSIDE AIR INTAKES. MAINTAIN 10" CLEARANCE BETWEEN WATER HEATER COMBUSTION AIR INTAKE AND EXHAUST FAN EF-1 DISCHARGE. SEE PLUMBING DRAWINGS FOR MORE INFORMATION ON WATER HEATER FLUE AND COMBUSTION AIR TERMINATIONS.



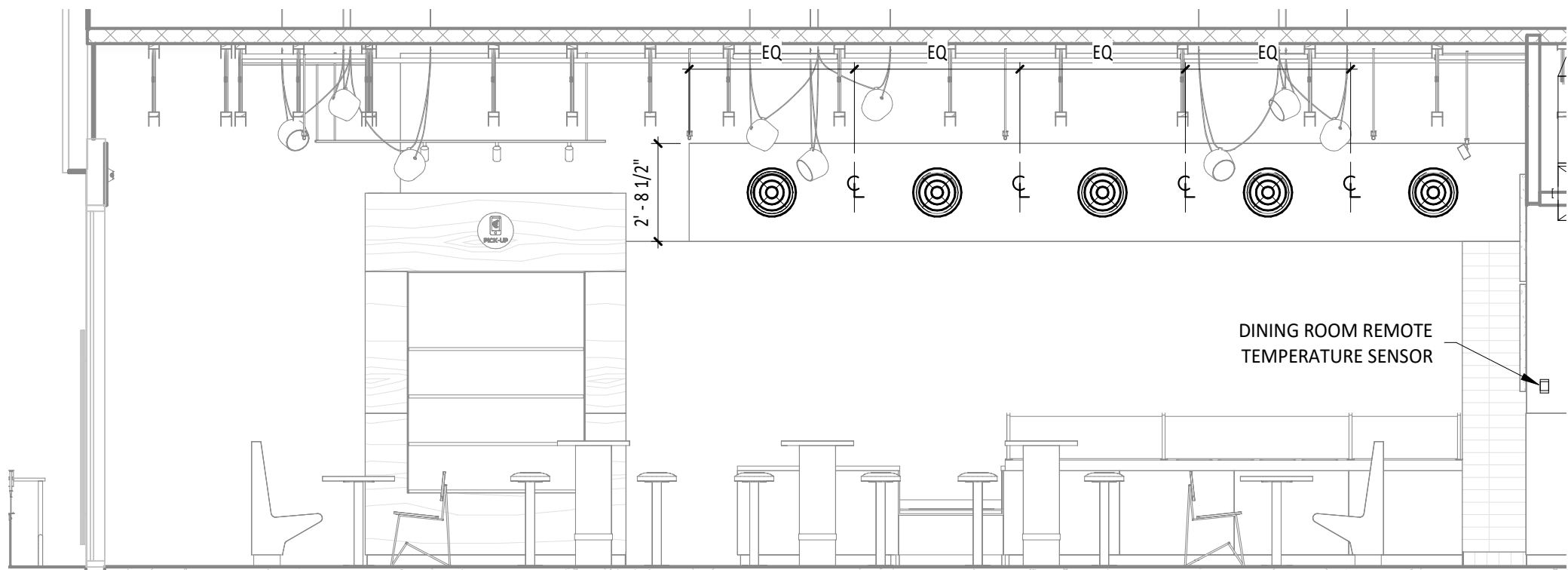
**6 HVAC DINING ROOM RETURN SECTION**  
1/4" = 1'-0"



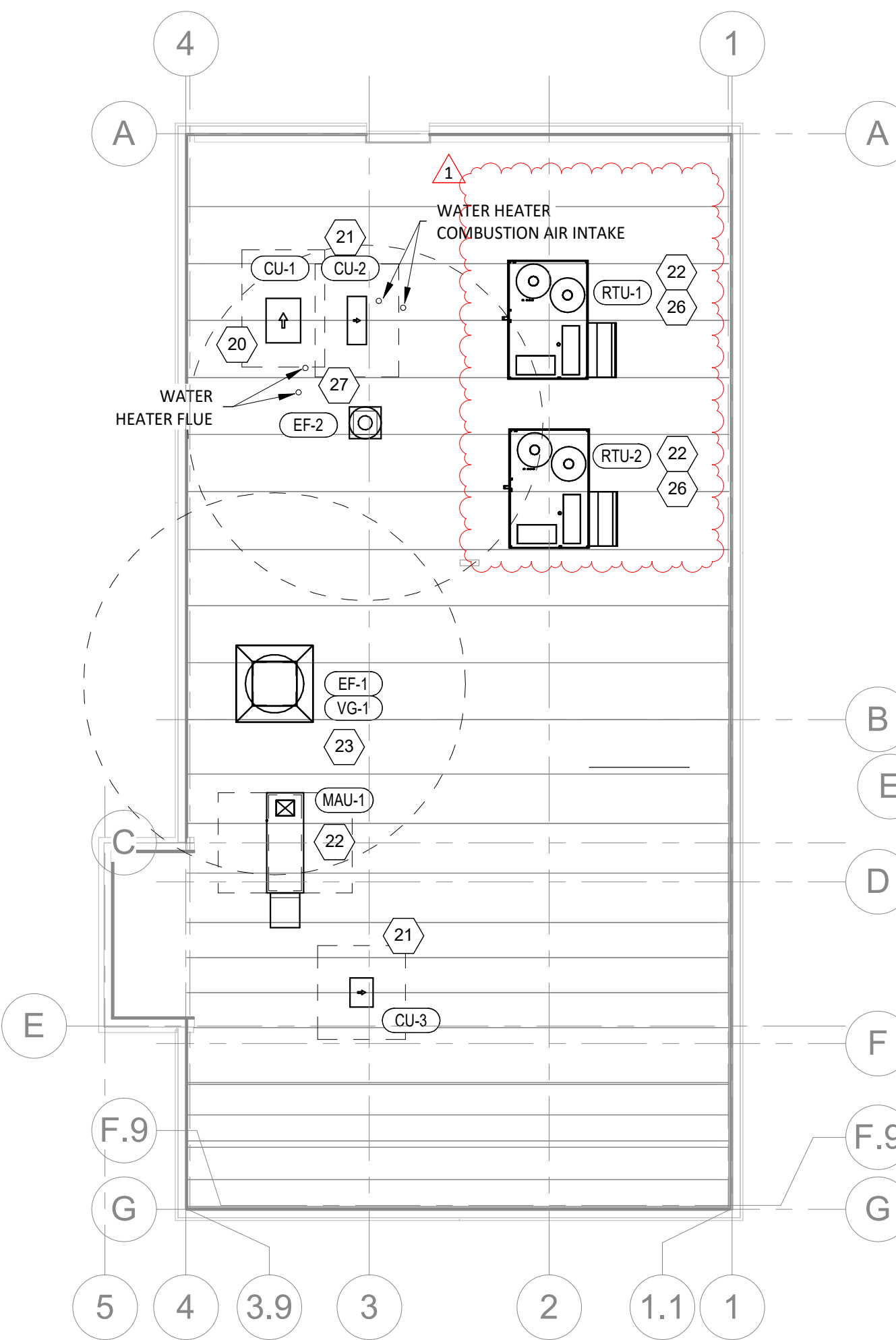
**5 HVAC DINING ROOM SECTION**  
1/4" = 1'-0"



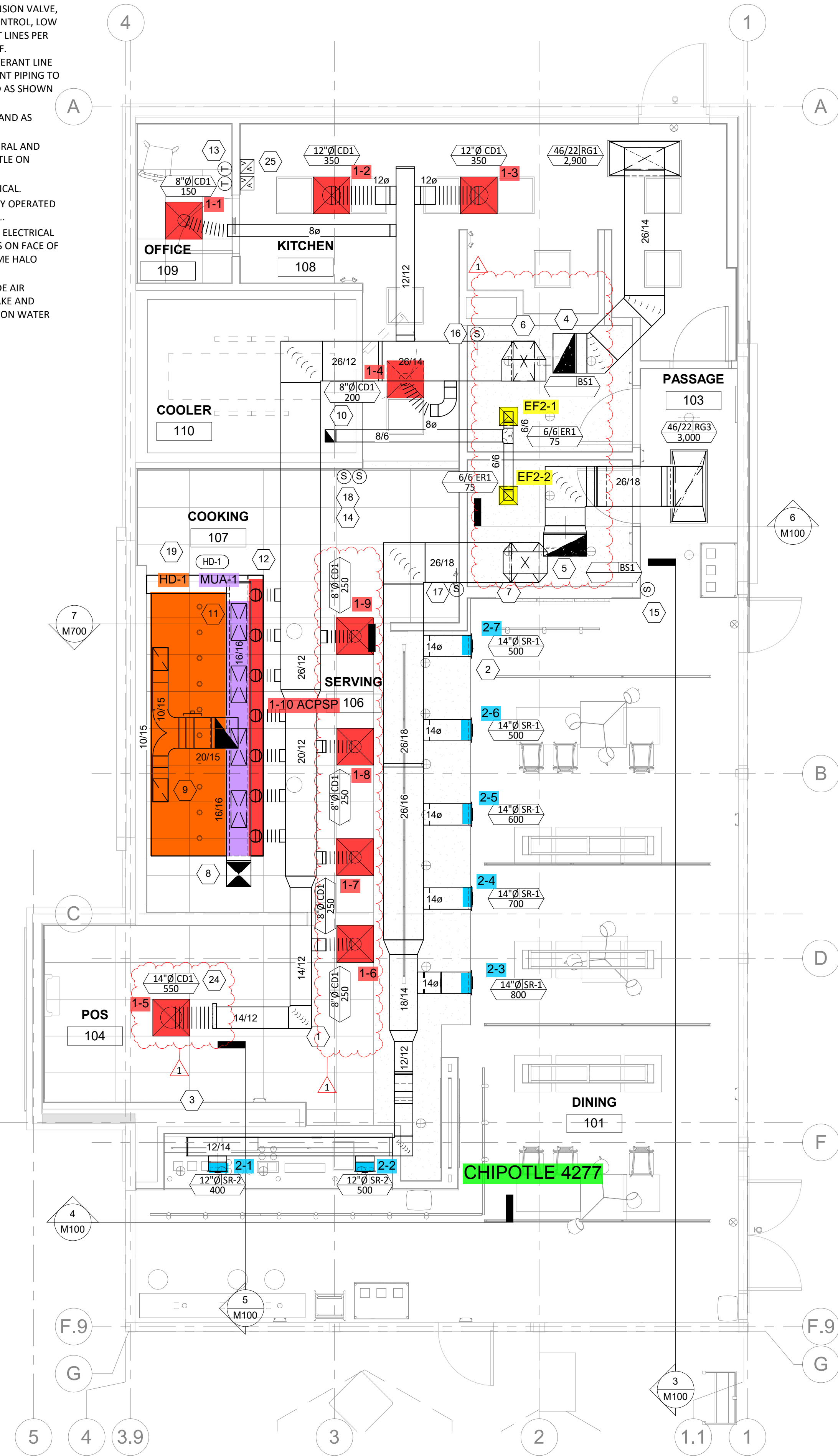
**4 HVAC DINING ROOM SECTION**  
1/4" = 1'-0"



**3 HVAC DINING ROOM SECTION**  
1/4" = 1'-0"



**2 HVAC ROOF PLAN**  
1/8" = 1'-0"



**1 HVAC FLOOR PLAN**  
1/4" = 1'-0"



19100 VON KARMAN AVE.  
SUITE 600  
IRVINE, CA 92612  
949.753.7676 T  
WDPARTNERS.COM

project no. | CMGCE0021

owner



CHIPOTLE MEXICAN GRILL, INC.  
610 NEWPORT CENTER DRIVE,  
SUITE 1300  
NEWPORT BEACH, CA 92660  
WWW.CHIPOTLE.COM

project info

ARENA BOULEVARD CHIPOTLE  
2650 ARENA BLVD.  
SACRAMENTO, CA

issue dates

<b>submission:</b>	Date
permit bid	02/25/2022
<b>revisions:</b>	Date
# Description	Date
1 Rev-1 Plan Check Comments & Client changes	08/29/22

designed by: U. SHAIKH  
checked by: Y. ZAKI

seal



sheet info

HVAC SCHEDULES  
**M600**

### ROOFTOP UNIT SCHEDULE

TAG	DESCRIPTION	NOMINAL CAPACITY	EER	AIRFLOW			NET COOLING CAPACITY				HEATING CAPACITY			NUMBER OF		REFRIGERANT			ELECTRICAL			FURNISHED BY	INSTALLED BY	BASIS FOR DESIGN		REMARKS	
				TOTAL	OA	E.S.P.	TOTAL	SENSIBLE	DB	WB	COND. EAT	INPUT	OUTPUT	EAT	COMPRESSORS	CIRCUITS	TYPE	CHARGE	WEIGHT	MOC/P	MCA			V/P/H	MANUFACTURER		MODEL
RTU-1	KITCHEN ROOF TOP UNIT	8.5 ton	11.2	3,400 CFM	500 CFM	0.80 in-wg	96,230 Btu/h	59,540 Btu/h	76.8 °F	67.7 °F	97 °F	180 Btu/h	148 Btu/h	64.1 °F	2	2	R-410A	14 lb	1,300 lb	50 A	42 A	208/3/60	HES	GC	CARRIER	48FCM09	FURNISHED WITH LOW LEAK DRY BULB ECONOMIZER WITH FAULT DETECTION AND DIAGNOSTIC, BAROMETRIC RELIEF, SUPPLY AIR SMOKE DETECTOR W/ REMOTE KEYED ANNUNCIATOR/RESET, M.O.D., MERV-13 FILTERS, CURB, TOOLLESS HINGED ACCESS PANELS, DISCONNECT, NON-POWERED UNIT-MOUNTED CONVENIENCE RECEPTACLE, HIGH STATIC BELT DRIVE BLOWER WITH VFD, MICRO-CHANNEL "ALL ALUMINUM" CONDENSER COIL, COPPER TUBE/ALUMINUM FIN EVAPORATOR COIL.
RTU-2	DINING ROOM ROOF TOP UNIT	10 ton	11	4,000 CFM	1,000 CFM	0.80 in-wg	118,180 Btu/h	104,450 Btu/h	80.3 °F	64.1 °F	99 °F	250 Btu/h	205 Btu/h	60 °F	2	2	R-410A	15.3 lb	1,300 lb	60 A	51 A	208/3/60	HES	GC	CARRIER	48FCM12	FURNISHED WITH LOW LEAK DRY BULB ECONOMIZER WITH FAULT DETECTION AND DIAGNOSTIC, BAROMETRIC RELIEF, SUPPLY AIR SMOKE DETECTOR W/ REMOTE KEYED ANNUNCIATOR/RESET, M.O.D., MERV-13 FILTERS, CURB, TOOLLESS HINGED ACCESS PANELS, DISCONNECT, NON-POWERED UNIT-MOUNTED CONVENIENCE RECEPTACLE, HIGH STATIC BELT DRIVE BLOWER WITH VFD, MICRO-CHANNEL "ALL ALUMINUM" CONDENSER COIL, COPPER TUBE/ALUMINUM FIN EVAPORATOR COIL.

### KITCHEN HOOD SCHEDULE

TAG	DESCRIPTION	MAX COOKING TEMP.	AIRFLOW	E.S.P.	EXHAUST PLENUM						PERFORATED SUPPLY PLENUMS						NO. OF LIGHT FIXTURES	WEIGHT	FURNISHED BY	INSTALLED BY	BASIS FOR DESIGN		REMARKS		
					DUCT COLLARS			MAU PLENUM			AC PLENUM			MANUFACTURER	MODEL										
					NO.	WIDTH	LENGTH	NO.	WIDTH	LENGTH	NO.	WIDTH	LENGTH			NO.					DIAMETER				
HD-1	TYPE I CANOPY HOOD WITH PERFORATED MAU AND AC SUPPLY PLENUMS	600 °F	3,200 CFM	0.86 in-wg	2	10"	1' - 3"	14' - 3"	4' - 3"	15' - 3"	1' - 10"	1,950 CFM	4	10"	2' - 0"	800 CFM	7	8"	10	1,200 lb	HS	GC	CAPTIVE-AIRE	5424 ND-2-ACSP-F	MAT'L: 18 GA. TYPE 430 SS. FURNISHED WITH VAPORPROOF INCANDESCENT LIGHT FIXTURES, 16" TALL HE SS FILTERS, INTEGRAL UTILITY CABINET, ANSUL SYSTEM, DUCT COLLAR TEMPERATURE SENSOR, PREWIRE PACKAGE, SPARE FIRE SYSTEM DRY CONTACT, AND 4-POLE 20A CONTACTOR

### FAN SCHEDULE

TAG	DESCRIPTION	AIRFLOW	E.S.P.	WEIGHT	ELECTRICAL		FURNISHED BY	INSTALLED BY	BASIS FOR DESIGN		REMARKS
					MOTOR POWER	V/P/H			MANUFACTURER	MODEL	
EF-1	UPBLAST UL762 EXHAUST FAN	3,200 CFM	1.20 in-wg	300 lb	2 hp	208/3/60	HS	GC	CAPTIVE-AIRE	NCA24HPFA	BELT DRIVE UL762 UPBLAST EXHAUST FAN FURNISHED WITH WEATHERPROOF DISCONNECT AND VENTED ROOF CURB
EF-2	DOWNBLAST RESTROOM EXHAUST FAN	150 CFM	0.60 in-wg	100 lb	0.18 hp	120/1/60	HS	GC	CAPTIVE-AIRE	DR12HFA	DIRECT DRIVE DOWNBLAST RESTROOM EXHAUST FAN FURNISHED WITH INTEGRAL DISCONNECT, SPEED CONTROL, BACKDRAFT DAMPER, AND CURB

### MAKEUP AIR UNIT SCHEDULE

TAG	DESCRIPTION	AIRFLOW	E.S.P.	HEATING			WEIGHT	ELECTRICAL		FURNISHED BY	INSTALLED BY	BASIS FOR DESIGN		REMARKS
				INPUT	OUTPUT	EAT		MOTOR POWER	V/P/H			MANUFACTURER	MODEL	
MAU-1	DIRECT-FIRED MAKEUP AIR UNIT	1,950 CFM	0.80 in-wg	225,000 Btu/h	220,000 Btu/h	21 °F	650 lb	2 hp	208/3/60	HS	GC	CAPTIVE-AIRE	A1-D.250-G10	12.5:1 MAX TURNDOWN. FURNISHED WITH DISCONNECT, ROOF CURB, SCREEN INTAKE, AND WASHABLE ALUMINUM FILTERS

### CONDENSING UNIT SCHEDULE

TAG	DESCRIPTION	NOMINAL CAPACITY	NUMBER OF		REFRIGERANT		WEIGHT	ELECTRICAL			FURNISHED BY	INSTALLED BY	BASIS FOR DESIGN		REMARKS
			COMPRESSORS	CIRCUITS	TYPE	CHARGE		MOC/P	FLA	V/P/H			MANUFACTURER	MODEL	
CU-1	CONDENSING UNIT - WALK-IN COOLER		1	1	R-404A	10.4 lb	250 lb	15 A	9 A	208/3/60	WCS	GC	HARFORD	KPCL99MIZOP-3E	FURNISHED WITH WALK-IN COOLER
CU-2	REMOTE CONDENSER - LOW CAPACITY ICE MAKER		0	1	R-404A	11.46 lb	100 lb			120/1/60	KES	GC	HOSHIZAKI	URC-9F	FURNISHED WITH ICE MAKER
CU-3	REMOTE CONDENSER - SODA MACHINE ICE MAKER		0	1	R-404A	3.86 lb	100 lb			120/1/60	KES	GC	HOSHIZAKI	URC-5F	FURNISHED WITH ICE MAKER

### VIROGUARD SCHEDULE

TAG	COUNT	DESCRIPTION	DUCT CONNECTION SIZE	FAN	FURNISHED BY	INSTALLED BY	BASIS FOR DESIGN MANUFACTURER
VG-1	1	VIROGUARD HOOD EXHAUST FAN ROOFTOP CONTAINMENT SYSTEM	18" X 18"	CAPTIVE-AIRE NCA24HPFA	TDC	GC	ENVIROMATIC

### AIR TERMINAL SCHEDULE

TAG	DESCRIPTION	FACE SIZE	MATERIAL	FINISH	MOUNTING	FURNISHED BY	INSTALLED BY	BASIS FOR DESIGN		NOTES
								MANUFACTURER	MODEL	
BS1	BATHROOM AIR PURIFICATION UNIT		STAINLESS STEEL	STAINLESS STEEL	SURFACE MOUNT	TUV	GC	RGF ENVIRONMENTAL GROUP	BRU ASSEMBLY	SEE ELECTRICAL SHEETS FOR CONNECTION INFORMATION
CD1	PERFORATED CEILING DIFFUSER	24" X 24"	ALUMINUM	WHITE	LAY-IN CEILING	GC	GC	NAILOR	4320A TYPE L	PROVIDE WITH INTEGRAL OBD
ER1	PERFORATED CEILING EXHAUST	12" X 12"	ALUMINUM	WHITE	SURFACE MOUNT	GC	GC	NAILOR	4330R TYPE S	PROVIDE INTEGRAL OBD
RG1	PERFORATED CEILING RETURN	48" X 24"	ALUMINUM	WHITE	LAY-IN CEILING	GC	GC	NAILOR	4330R TYPE L	
RG3	PERFORATED CEILING RETURN	48" X 24"	ALUMINUM	WHITE	SURFACE MOUNT	GC	GC	NAILOR	4330R TYPE S	
SR-1	TURBO NOZZLE DIFFUSER	SEE NECK SIZE	ALUMINUM	WHITE	WALL	GC	GC	AIR CONCEPT	ANR-14	PROVIDE WITH FACE-ACCESSIBLE OBD
SR-2	TURBO NOZZLE DIFFUSER	SEE NECK SIZE	ALUMINUM	WHITE	WALL	GC	GC	AIR CONCEPT	ANR-12	PROVIDE WITH FACE-ACCESSIBLE OBD

### AIR BALANCE SCHEDULE

TAG	SUPPLY FLOW	RETURN FLOW	EXHAUST FLOW	SUBTOTAL
EF-1	0 CFM	0 CFM	3,200 CFM	-3,200 CFM
EF-2	0 CFM	0 CFM	150 CFM	-150 CFM
MAU-1	1,950 CFM	0 CFM	0 CFM	1,950 CFM
RTU-1	3,400 CFM	2,900 CFM	0 CFM	500 CFM
RTU-2	4,000 CFM	3,000 CFM	0 CFM	1,000 CFM
NET PRESSURIZATION				100 CFM

### CONTROL FUNCTIONS

- THE MAIN COOKING EXHAUST FAN AND MAKE-UP AIR UNIT SHALL BE INTERLOCKED TO OPERATE TOGETHER. THIS CONTROL CIRCUIT IS ACTIVATED BY A SWITCH AND INCLUDES A FIRE PROTECTION OVERRIDE.
- THE TEMPERATURE IN EACH ZONE IS CONTROLLED BY SPACE TEMPERATURE SENSORS CONNECTED TO THE THERMOSTATS LOCATED IN THE OFFICE. ALL ZONES SHALL OPERATE WITH CONTINUOUS FAN OPERATION DURING OCCUPIED TIMES AND INTERMITTENTLY AS NEEDED TO MAINTAIN SET POINTS DURING UNOCCUPIED TIMES. OUTSIDE AIR DAMPERS SHALL BE OPEN CONTINUOUSLY WHEN EITHER IN OCCUPIED MODE OR WHEN THE HOOD SYSTEM IS ON AND SHALL BE CLOSED DURING UNOCCUPIED PERIODS.
- THE THERMOSTATS SHALL DETERMINE OCCUPIED/UNOCCUPIED STATUS BASED ON THE SCHEDULE IN THE ENERGY MANAGEMENT SYSTEM.



19100 VON KARMAM AVE.  
SUITE 600  
IRVINE, CA 92612  
949.753.7676 T  
WDPARTNERS.COM

project no. | CMGCE0021

owner



CHIPOTLE MEXICAN GRILL, INC.  
610 NEWPORT CENTER DRIVE,  
SUITE 1300  
NEWPORT BEACH, CA 92660  
WWW.CHIPOTLE.COM

project info

ARENA BOULEVARD CHIPOTLE  
2650 ARENA BLVD.  
SACRAMENTO, CA

issue dates

submission:	Date
permit bid	02/25/2022
revisions:	
# Description	Date

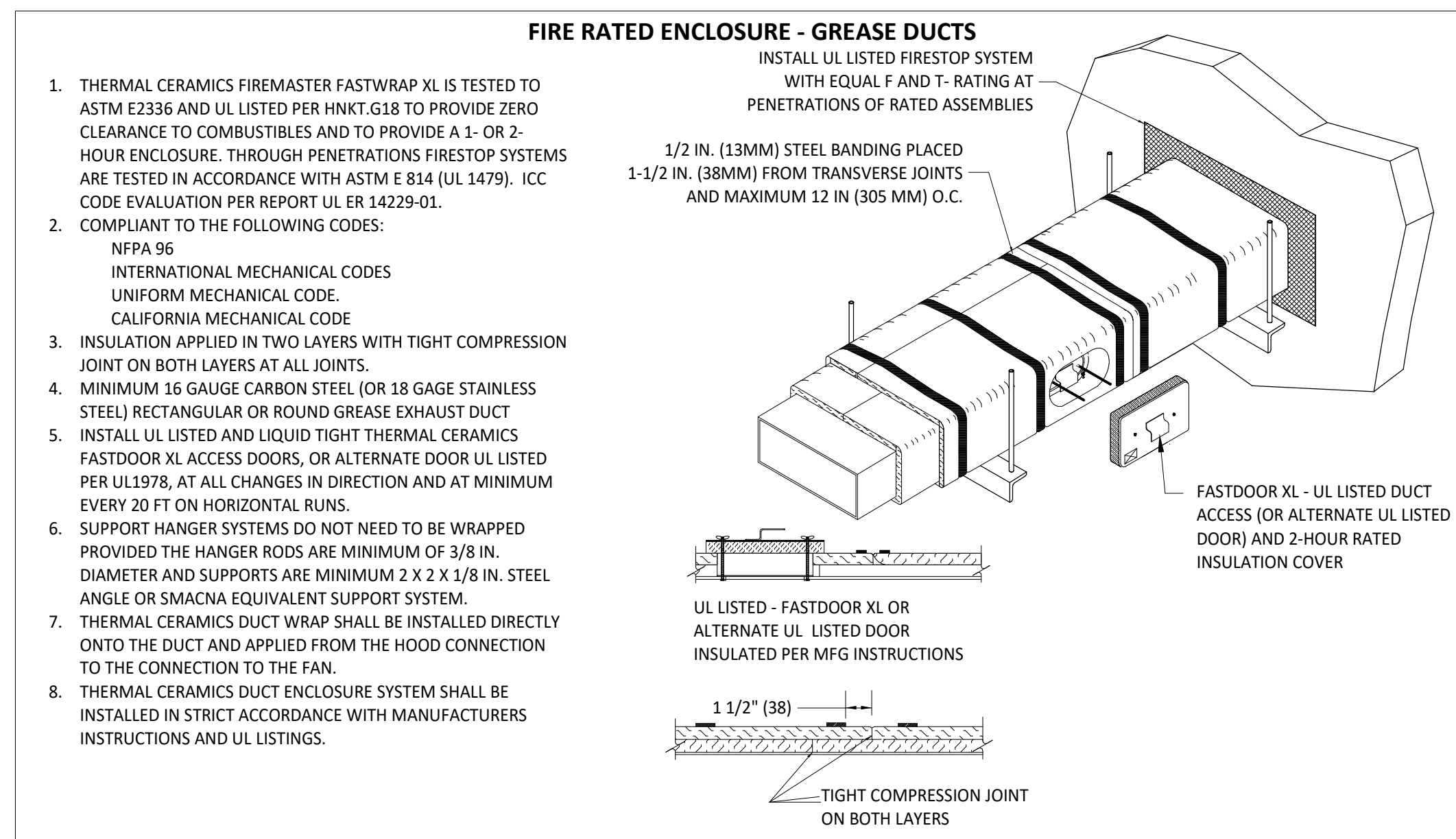
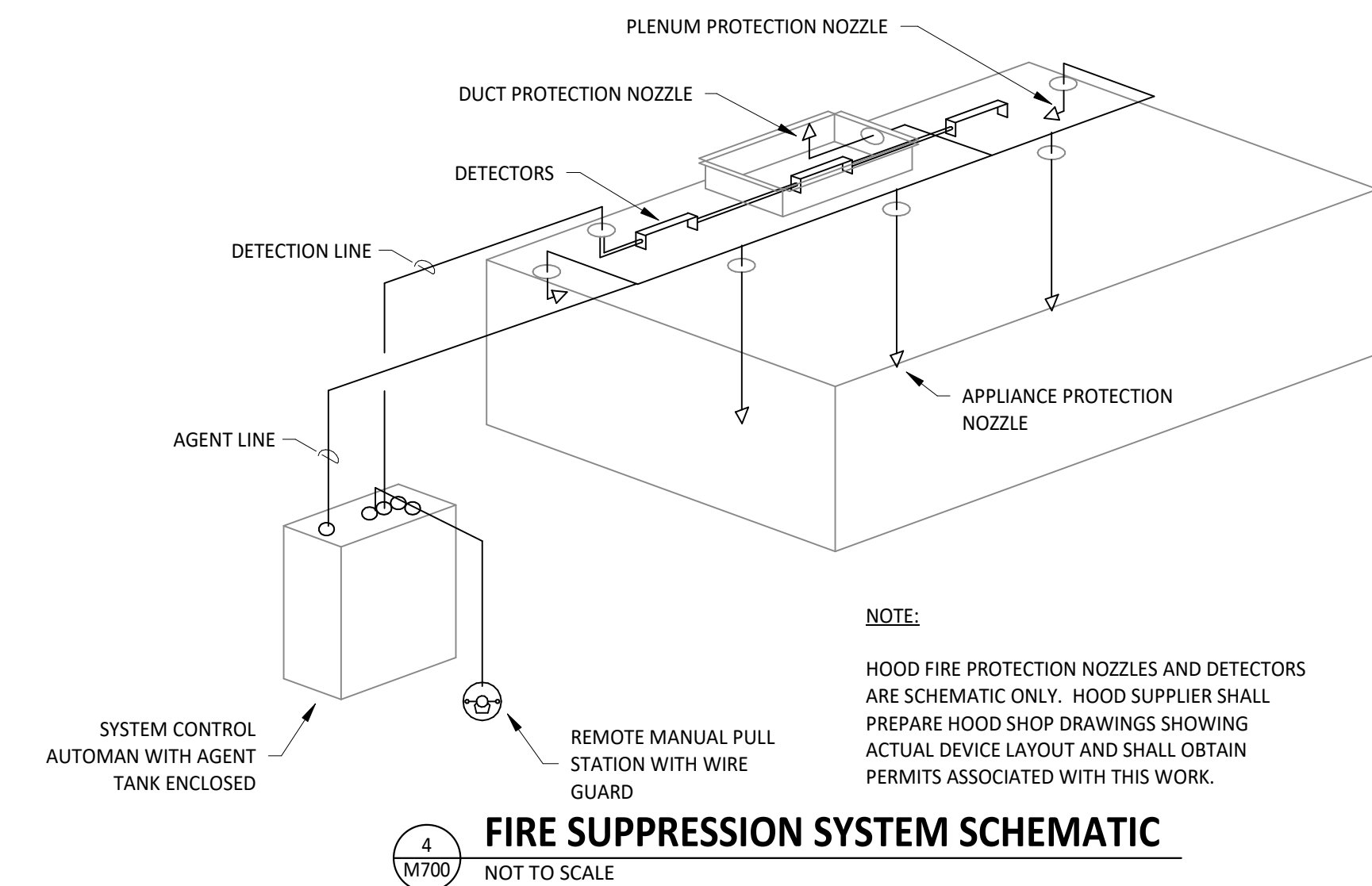
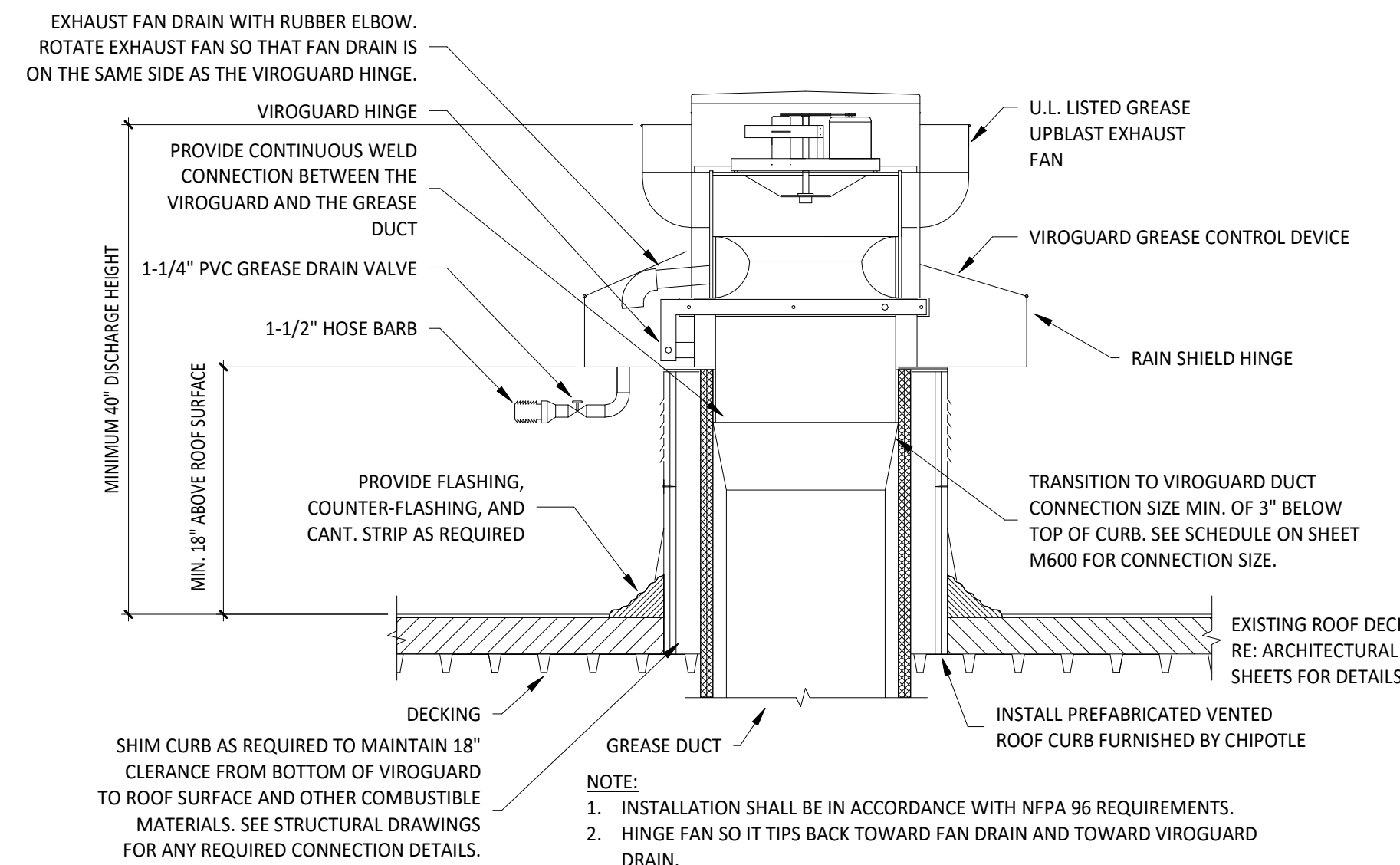
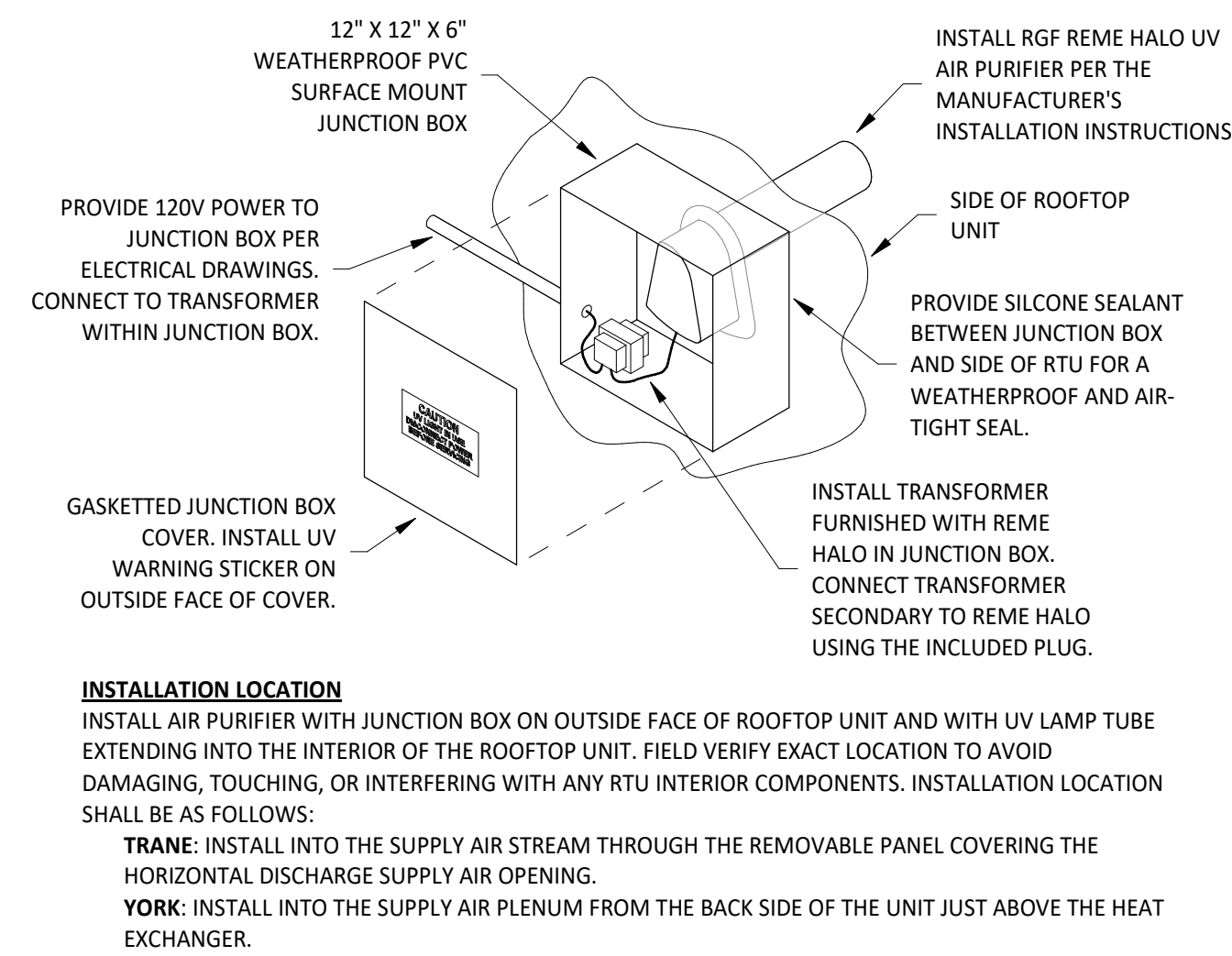
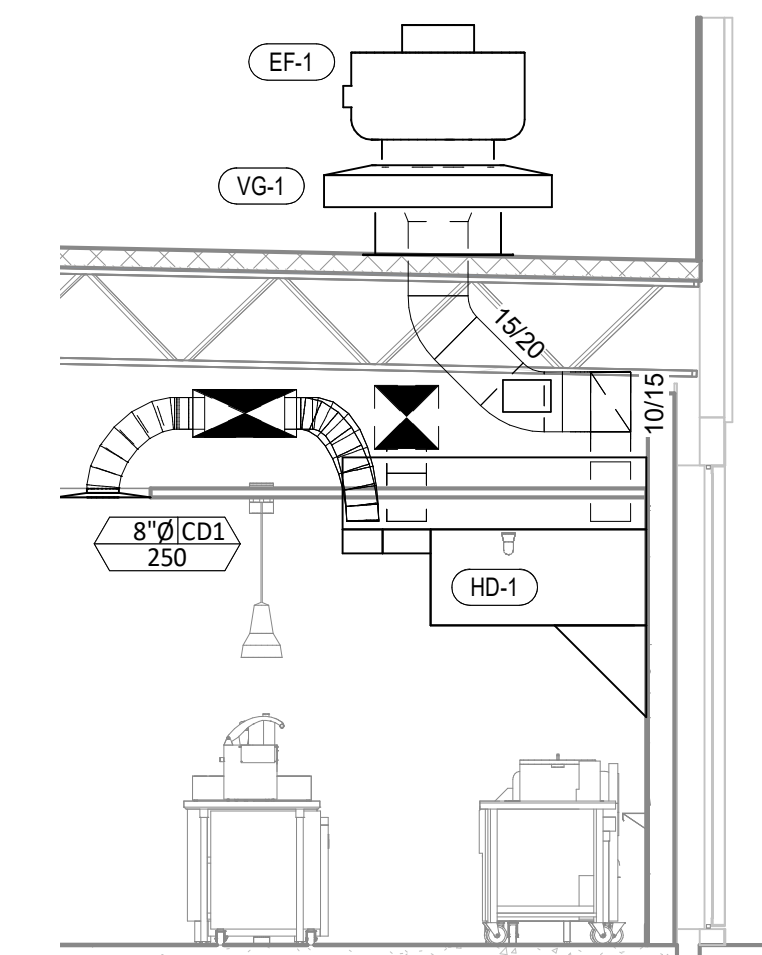
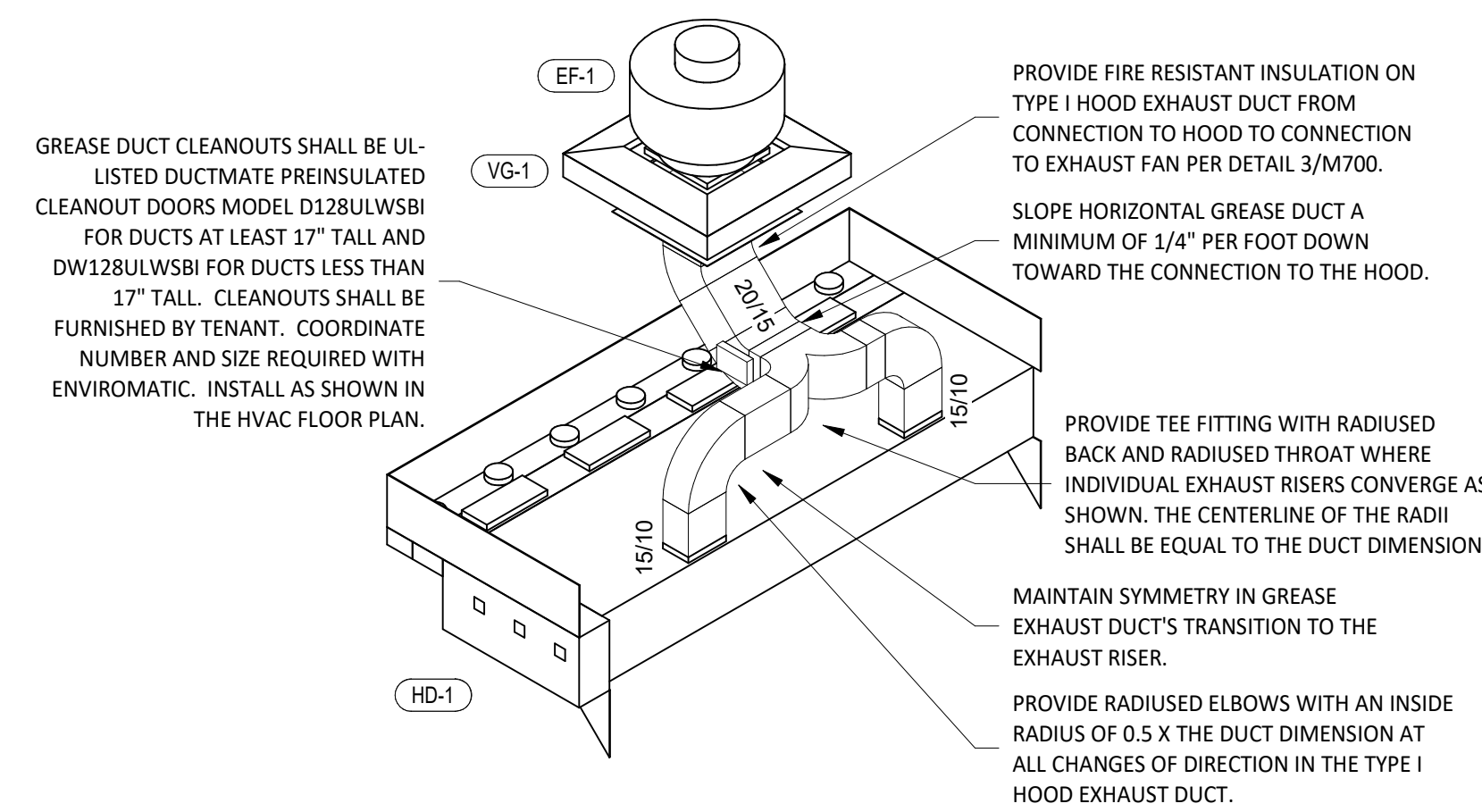
designed by: U. SHAIKH  
checked by: Y. ZAKI

seal

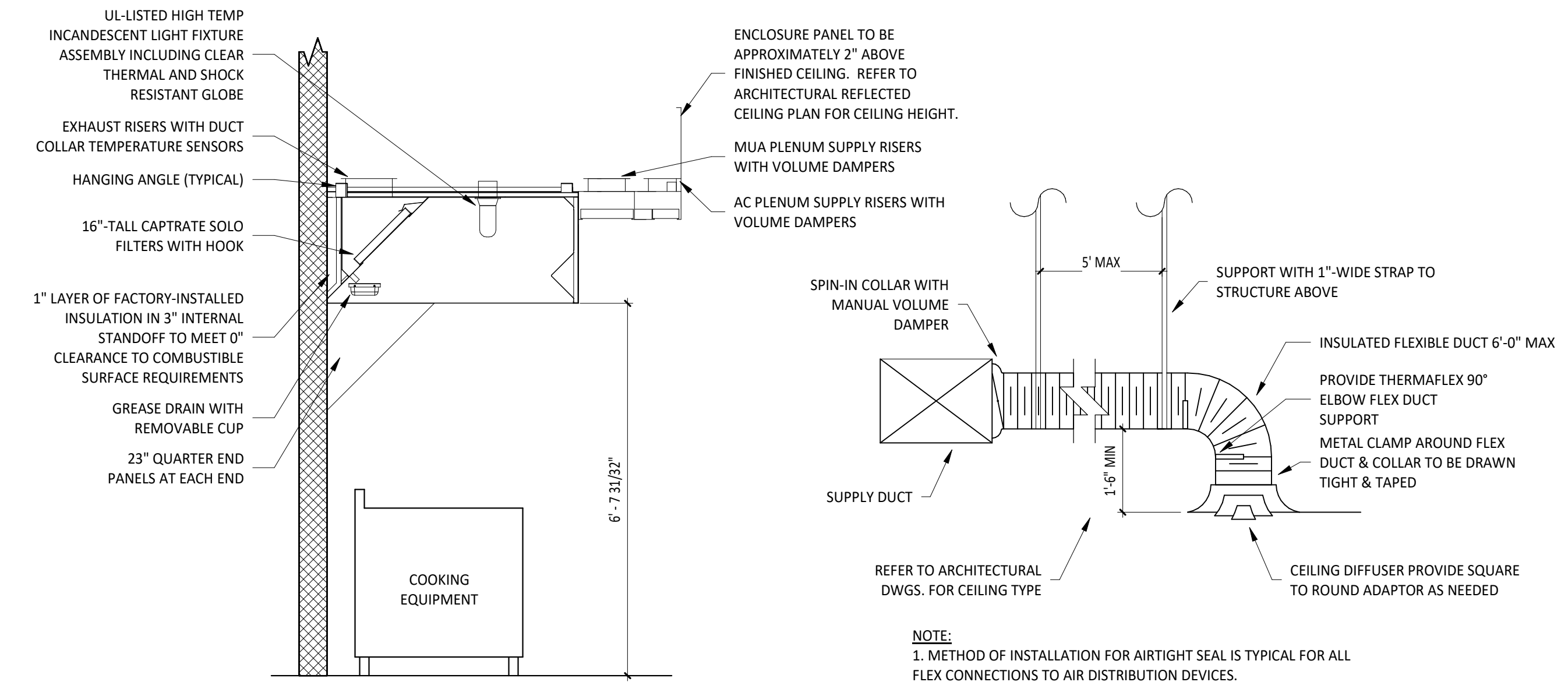


sheet info

HVAC DETAILS  
**M700**



**3 FIREMASTER DUCT WRAP - UL HNK1-G18**  
NOT TO SCALE



**2 HOOD SECTION VIEW**  
NOT TO SCALE

**1 DIFFUSER CONNECTION**  
NOT TO SCALE

STATE OF CALIFORNIA  
**Mechanical Systems**  
 NRCC-MCH-E CALIFORNIA ENERGY COMMISSION

**CERTIFICATE OF COMPLIANCE** NRCC-MCH-E  
 This document is used to demonstrate compliance for mechanical systems that are within the scope of the permit application and are demonstrating compliance using the prescriptive path outlined in §140.4, or §141.0(b)2 for alterations.

Project Name: Chipotle - Arena & I-5, Sacramento, CA Report Page: (Page 1 of 12)  
 Project Address: 2650 Arena Blvd, Suite 1300 Date Prepared: 8/26/2022

**A. GENERAL INFORMATION**

01 Project Location (city)	Newport Beach	04 Total Conditioned Floor Area	1970
02 Climate Zone	12	05 Total Unconditioned Floor Area	0
03 Occupancy Types Within Project:		06 # of Stories (Habitable Above Grade)	1
<input checked="" type="checkbox"/> Office (B)	<input checked="" type="checkbox"/> Retail (M)	<input type="checkbox"/> Non-refrigerated Warehouse (S)	
<input type="checkbox"/> Hotel/ Motel Guest Rooms (R-1)	<input type="checkbox"/> School (E)	<input type="checkbox"/> Healthcare Facility (I)	
<input type="checkbox"/> High-Rise Residential (R-2/R-3)	<input type="checkbox"/> Relocatable Class Bldg (E)	<input checked="" type="checkbox"/> Other (write in)	See Table J

**B. PROJECT SCOPE**  
 This table includes mechanical systems or components that are within the scope of the permit application and are demonstrating compliance using the prescriptive path outlined in §140.4, or §141.0(b)2 for alterations.

01	02	03
Air System(s)	Wet System Components	Dry System Components
<input checked="" type="checkbox"/> Heating Air System	<input type="checkbox"/> Water Economizer	<input checked="" type="checkbox"/> Air Economizer
<input checked="" type="checkbox"/> Cooling Air System	<input type="checkbox"/> Pumps	<input type="checkbox"/> Electric Resistance Heat
<input type="checkbox"/> Mechanical Controls	<input type="checkbox"/> System Piping	<input checked="" type="checkbox"/> Fan Systems
<input checked="" type="checkbox"/> Mechanical Controls (existing to remain, altered or new)	<input type="checkbox"/> Cooling Towers	<input checked="" type="checkbox"/> Ductwork (existing to remain, altered or new)
	<input type="checkbox"/> Chillers	<input checked="" type="checkbox"/> Ventilation
	<input type="checkbox"/> Boilers	<input type="checkbox"/> Zonal Systems/ Terminal Boxes

Registration Number: CA Building Energy Efficiency Standards - 2019 Nonresidential Compliance  
 Registration Date/Time: Report Version: 2019.1.003  
 Registration Provider: Energysoft Schema Version: rev 20200601  
 Report Generated: 2022-08-26 12:02:51

STATE OF CALIFORNIA  
**Mechanical Systems**  
 NRCC-MCH-E CALIFORNIA ENERGY COMMISSION

**CERTIFICATE OF COMPLIANCE** NRCC-MCH-E  
 Project Name: Chipotle - Arena & I-5, Sacramento, CA Report Page: (Page 3 of 12)  
 Project Address: 2650 Arena Blvd, Suite 1300 Date Prepared: 8/26/2022

**F. HVAC SYSTEM SUMMARY (DRY & WET SYSTEMS)**  
 This table is used to demonstrate compliance for mechanical equipment with mandatory requirements found in §110.1 and §110.2(a) and prescriptive requirements found in §140.4(a), §140.4(b), and §140.4(k) or §141.0(b)2 for alterations.

**Dry System Equipment Sizing (includes air conditioners, condensers, heat pumps, VRF, furnaces and unit heaters)**

01 Name or Item Tag	02 Equipment Category per Tables 110.2	03 Equipment Type per Tables 110.2 / Title 20	04 Smallest Size Available <sup>1</sup> §140.4(a)	05 Equipment Sizing per Mechanical Schedule (kBtu/h) §140.4 (a&b)						
				06 Heating Output <sup>2,3</sup>			07 Cooling Output <sup>2,3</sup>		08 Load Calculations <sup>4</sup>	
				Per Design (kBtu/h)	Rated (kBtu/h)	Supp. Heating Output (kBtu/h)	Sensible Per Design (kBtu/h)	Rated (kBtu/h)	Total Heating Load (kBtu/h)	Total Sensible Cooling Load (kBtu/h)
RTU-1	Unitary AC/ Condensers	AC, air-cooled pkg (3 phase)	NA: Load Controls	148	148	0	67.62	59.54	52.38	99.27
RTU-2	Unitary AC/ Condensers	AC, air-cooled pkg (3 phase)	NA: Load Controls	205	205	0	96.77	104.45	11.59	97.45

<sup>1</sup> FOOTNOTES: Equipment shall be the smallest size, within the available options of the desired equipment line, necessary to meet the design heating and cooling loads of the building per §140.4(a). Healthcare facilities are exempted.  
<sup>2</sup> It is common practice to show rated output capacity on the equipment schedule. Sensible cooling output comes from specification sheet tables.  
<sup>3</sup> If equipment is heating only, leave cooling output and load blank. If equipment is cooling only, leave heating output and load blank.  
<sup>4</sup> Authority Having Jurisdiction may ask for load calculations used for compliance per §140.4(b).

Registration Number: CA Building Energy Efficiency Standards - 2019 Nonresidential Compliance  
 Registration Date/Time: Report Version: 2019.1.003  
 Registration Provider: Energysoft Schema Version: rev 20200601  
 Report Generated: 2022-08-26 12:02:51

STATE OF CALIFORNIA  
**Mechanical Systems**  
 NRCC-MCH-E CALIFORNIA ENERGY COMMISSION

**CERTIFICATE OF COMPLIANCE** NRCC-MCH-E  
 Project Name: Chipotle - Arena & I-5, Sacramento, CA Report Page: (Page 2 of 12)  
 Project Address: 2650 Arena Blvd, Suite 1300 Date Prepared: 8/26/2022

**C. COMPLIANCE RESULTS**  
 Table C will indicate if the project data input into the compliance document is compliant with mechanical requirements. This table is not editable by the user. If this table says "DOES NOT COMPLY" or "COMPLIES with Exceptional Conditions" refer to Table D., or the table indicated as not compliant for guidance.

01	02	03	04	05	06	07	08	09
System Summary §110.1, §110.2, §140.4	AND Pumps §140.4(k)	AND Fans/Economizers §140.4(c), §140.4(e)	AND System Controls §110.2, §120.2, §140.4(f)	AND Ventilation §120.1	AND Terminal Box Controls §140.4(d)	AND Distribution §120.3, §140.4(i)	AND Cooling Towers §110.2(e)2	COMPLIANCE RESULTS
(See Table F)	(See Table G)	(See Table H)	(See Table I)	(See Table J)	(See Table K)	(See Table L)	(See Table M)	COMPLIES
Yes	AND	AND	AND	AND	AND	AND	AND	COMPLIES

Mandatory Measures Compliance (See Table Q for Details) COMPLIES

**D. EXCEPTIONAL CONDITIONS**  
 This table is auto-filled with uneditable comments because of selections made or data entered in tables throughout the form.

**E. ADDITIONAL REMARKS**  
 This table includes remarks made by the permit applicant to the Authority Having Jurisdiction.

Registration Number: CA Building Energy Efficiency Standards - 2019 Nonresidential Compliance  
 Registration Date/Time: Report Version: 2019.1.003  
 Registration Provider: Energysoft Schema Version: rev 20200601  
 Report Generated: 2022-08-26 12:02:51

STATE OF CALIFORNIA  
**Mechanical Systems**  
 NRCC-MCH-E CALIFORNIA ENERGY COMMISSION

**CERTIFICATE OF COMPLIANCE** NRCC-MCH-E  
 Project Name: Chipotle - Arena & I-5, Sacramento, CA Report Page: (Page 4 of 12)  
 Project Address: 2650 Arena Blvd, Suite 1300 Date Prepared: 8/26/2022

**F. HVAC SYSTEM SUMMARY (DRY & WET SYSTEMS)**  
 Dry System Equipment Efficiency (other than Package Terminal Air Conditioners (PTAC) and Package Terminal Heat Pumps (PTHP))

01 Name or Item Tag	02 Size Category (Btu/h)	03 Rating Condition (°F)	04 Efficiency Unit	05 Heating Mode		06 Cooling Mode		07 Efficiency Unit	08 Minimum Efficiency Required per Tables 110.2 / Title 20	09 Design Efficiency
				Minimum Efficiency Required per Tables 110.2 / Title 20	Design Efficiency	Efficiency Unit	Minimum Efficiency Required per Tables 110.2 / Title 20			
RTU-1	>=65,000 and <135,000		AFUE	0.80	0.82	EER IEER	11 12.7		11 15	11.2 15
RTU-2	>=65,000 and <135,000		AFUE	0.80	0.82	EER IEER	11 12.7		11 15	11.2 15

**G. PUMPS**  
 This section does not apply to this project.

**H. FAN SYSTEMS & AIR ECONOMIZERS**  
 This table is used to demonstrate compliance with prescriptive requirements found in §140.4(c), §140.4(e), and §140.4(m) for fan systems. Fan systems serving only process loads are exempt from these requirements and do not need to be included in Table H.

System Name:	RTU-1	Economizer: <sup>1</sup>	Fixed Temperature	Economizer Controls:	Designed per §140.4(e) and (m)	System Fan Type:	Constant Volume
01 Fan Name or Item Tag	02 Fan Function	03 Qty	04 Maximum Design Supply Airflow (CFM)	05 HP Unit <sup>2</sup>	06 Design HP	07 Fan Power Pressure Drop Adjustment - Table 140.4-B Device	08 Design Airflow through Device (CFM)
SF	Supply	1	3400	BHP	2.4		
Total System Design Supply Airflow (CFM):			3400	Total System Design (B)HP:	2.4	Maximum System Fan Power (B)HP:	3.2

Registration Number: CA Building Energy Efficiency Standards - 2019 Nonresidential Compliance  
 Registration Date/Time: Report Version: 2019.1.003  
 Registration Provider: Energysoft Schema Version: rev 20200601  
 Report Generated: 2022-08-26 12:02:51



19100 VON KARMAN AVE.  
 SUITE 600  
 IRVINE, CA 92612  
 949.753.7676 T  
 WDPARTNERS.COM

project no. | CMGCE0021

owner



CHIPOTLE MEXICAN GRILL, INC.  
 610 NEWPORT CENTER DRIVE,  
 SUITE 1300  
 NEWPORT BEACH, CA 92660  
 WWW.CHIPOTLE.COM

project info

ARENA BOULEVARD CHIPOTLE  
 2650 ARENA BLVD.  
 SACRAMENTO, CA

issue dates

submission:	Date
permit bid	02/25/2022
revisions:	Date
# Description	
1 Rev-1 Plan Check Comments & Client changes	08/29/22

designed by: Y. ZAKI  
 checked by: F. JANABI

seal



sheet info

MECHANICAL  
 TITLE 24 FORMS  
**M800**

STATE OF CALIFORNIA  
**Mechanical Systems**  
 NRCC-MCH-E CALIFORNIA ENERGY COMMISSION

**CERTIFICATE OF COMPLIANCE** NRCC-MCH-E  
 Project Name: Chipotle - Arena & I-5, Sacramento, CA Report Page: (Page 5 of 12)  
 Project Address: 2650 Arena Blvd, Suite 1300 Date Prepared: 8/26/2022

**H. FAN SYSTEMS & AIR ECONOMIZERS**

System Name:	RTU-2	Economizer: <sup>1</sup>	Fixed Temperature	Economizer Controls:	Designed per §140.4(e) and (m)	System Fan Type:	Constant Volume
01	02	03	04	05	06	07	08
Fan Name or Item Tag	Fan Function	Qty	Maximum Design Supply Airflow (CFM)	HP Unit <sup>2</sup>	Design HP	Fan Power Pressure Drop Adjustment - Table 140.4-B	Design Airflow through Device (CFM)
SF	Supply	1	4000	BHP	3	NA	NA
Total System Design Supply Airflow (CFM):			4000	Total System Design (B)HP:	3	Maximum System Fan Power (B)HP:	3.76

<sup>1</sup> FOOTNOTES: Computer room economizers must meet requirements of §140.9(a) and will be documented on the NRCC-PRC-E document.  
<sup>2</sup> The unit used for HP must be consistent for all fans within a system.

**I. SYSTEM CONTROLS**

This table is used to demonstrate compliance with mandatory controls in §110.2 and §120.2 and prescriptive controls in §140.4(f) and (n) or requirements in §141.0(b)(2) for altered space conditioning systems.

01	02	03	04	05	06	07	08	09
System Name	System Zoning	Conditioned Floor Area Being Served (ft <sup>2</sup> )	Thermostats §110.2(b) & (c) <sup>1</sup> , §120.2(a) or §141.0(b)(2)E	Shut-Off Controls §120.2(e)	Isolation Zone Controls §120.2(g)	Demand Response §110.12 and §120.2(b)	Supply Air Temp. Reset §140.4(f)	Window Interlocks per §140.4(n)
RTU-1	Single zone	<= 25,000 ft <sup>2</sup>	Setback	Auto Timer Switch	4 Hour Timer	EMCS	Included	Provided
RTU-2	Single zone	<= 25,000 ft <sup>2</sup>	Setback	Auto Timer Switch	4 Hour Timer	EMCS	Included	Provided

<sup>1</sup> FOOTNOTES: Gravity gas wall heaters, gravity floor heaters, gravity room heaters, non-central electric heaters, fireplaces or decorative gas appliances, wood stoves are not required to have setback thermostats.  
 \*Notes: Controls with a \* require a note in the space below explaining how compliance is achieved. EX: system 1: SA Temp Reset: Exempt because zones compliant with §140.4(d); EXCEPTION 1 to §140.4(f)

Registration Number: CA Building Energy Efficiency Standards - 2019 Nonresidential Compliance  
 Registration Date/Time: Report Version: 2019.1.003  
 Registration Provider: Energysoft  
 Schema Version: rev 20200601  
 Report Generated: 2022-08-26 12:02:51

STATE OF CALIFORNIA  
**Mechanical Systems**  
 NRCC-MCH-E CALIFORNIA ENERGY COMMISSION

**CERTIFICATE OF COMPLIANCE** NRCC-MCH-E  
 Project Name: Chipotle - Arena & I-5, Sacramento, CA Report Page: (Page 7 of 12)  
 Project Address: 2650 Arena Blvd, Suite 1300 Date Prepared: 8/26/2022

**J. VENTILATION AND INDOOR AIR QUALITY**

System Name	RTU-2	System Design OA CFM Airflow <sup>1</sup>	183	System Design Transfer Air CFM	0	Air Filtration per §120.1(c) and §141.0(b)(2) <sup>2</sup>		
08	09	10	11	12	13	14	15	16
Space Name of Item Tag	Occupancy Type <sup>4</sup>	Conditioned Floor Area (ft <sup>2</sup> )	# of Shower heads/ toilets	# of people <sup>5</sup>	Required Min OA CFM	Required Min CFM	Provided per Design CFM	DCV or Sensor Controls per §120.1(d)(3), §120.1(d)(5), and §120.1(e)(3) <sup>6</sup>
104 - POS	Retail sales	230			57.5	0	0	DCV NA: Not required per §120.1(d)(3) Occ Sensor NA: Not required space type
109 - Office	Office space	45			6.8	0	0	DCV NA: Not required per §120.1(d)(3) Occ Sensor NA: Not required space type
108 - Kitchen	All others	312			46.8	0	0	DCV NA: Not required per §120.1(d)(3) Occ Sensor NA: Not required space type
106-107 - Cooking	All others	400			60	0	0	DCV NA: Not required per §120.1(d)(3) Occ Sensor NA: Not required space type
17	Total System Required Min OA CFM				183	18	Ventilation for this System Complies?	Yes

<sup>1</sup> FOOTNOTES: System CFM should include both mechanical and natural ventilation for the zone/system  
<sup>2</sup> Air filtration requirements apply to the following three system types per §120.1(c)(1): space conditioning systems utilizing ducts to supply air to occupiable space; supply-only ventilation systems providing outside air to occupiable space; supply side of balanced ventilation systems including heat recovery and energy recovery ventilation systems providing outside air to occupiable space.

Registration Number: CA Building Energy Efficiency Standards - 2019 Nonresidential Compliance  
 Registration Date/Time: Report Version: 2019.1.003  
 Registration Provider: Energysoft  
 Schema Version: rev 20200601  
 Report Generated: 2022-08-26 12:02:51

STATE OF CALIFORNIA  
**Mechanical Systems**  
 NRCC-MCH-E CALIFORNIA ENERGY COMMISSION

**CERTIFICATE OF COMPLIANCE** NRCC-MCH-E  
 Project Name: Chipotle - Arena & I-5, Sacramento, CA Report Page: (Page 6 of 12)  
 Project Address: 2650 Arena Blvd, Suite 1300 Date Prepared: 8/26/2022

**J. VENTILATION AND INDOOR AIR QUALITY**

This table is used to demonstrate compliance with mandatory ventilation requirements in §120.1 and §120.2(e)(3) for all nonresidential, high-rise residential and hotel/motel occupancies. For alterations, only ventilation systems being altered within the scope of the permit application need to be documented in this table. In lieu of this table, the required outdoor ventilation rates and airflows may be shown on the plans or the calculations can be presented in a spreadsheet.

01	02	03	04	05	06	07		
01	<input type="checkbox"/>	Check the box if the project is showing ventilation calculations on the plans, or attaching the calculations instead of completing this table.						
02	<input checked="" type="checkbox"/>	Check this box if the project included Nonresidential or Hotel/Motel spaces						
03	<input type="checkbox"/>	Check this box if the project included new or altered high-rise residential dwelling units.						
03	<input type="checkbox"/>	Check the box if the project is using natural ventilation in any nonresidential or hotel/motel spaces to meet required ventilation rates per §120.1(c)(2).						
<b>Nonresidential and Hotel/ Motel Ventilation Systems</b>								
System Name	RTU-1	System Design OA CFM Airflow <sup>1</sup>	423	System Design Transfer Air CFM	0	Air Filtration per §120.1(c) and §141.0(b)(2) <sup>2</sup>		
08	09	10	11	12	13	14	15	16
Space Name of Item Tag	Occupancy Type <sup>4</sup>	Conditioned Floor Area (ft <sup>2</sup> )	# of Shower heads/ toilets	# of people <sup>5</sup>	Required Min OA CFM	Required Min CFM	Provided per Design CFM	DCV or Sensor Controls per §120.1(d)(3), §120.1(d)(5), and §120.1(e)(3) <sup>6</sup>
100-101 - Dining	Cafeteria/ fastfood dining	718			359	0	0	DCV Provided per §120.1(d)(4) Occ Sensor NA: Not required space type
102-103-111-112 - Support	Corridor	265			39.8	0	0	DCV NA: Not required per §120.1(d)(3) Occ Sensor NA: Not required space type
17	Total System Required Min OA CFM				423	18	Ventilation for this System Complies?	Yes

Registration Number: CA Building Energy Efficiency Standards - 2019 Nonresidential Compliance  
 Registration Date/Time: Report Version: 2019.1.003  
 Registration Provider: Energysoft  
 Schema Version: rev 20200601  
 Report Generated: 2022-08-26 12:02:51

STATE OF CALIFORNIA  
**Mechanical Systems**  
 NRCC-MCH-E CALIFORNIA ENERGY COMMISSION

**CERTIFICATE OF COMPLIANCE** NRCC-MCH-E  
 Project Name: Chipotle - Arena & I-5, Sacramento, CA Report Page: (Page 8 of 12)  
 Project Address: 2650 Arena Blvd, Suite 1300 Date Prepared: 8/26/2022

**J. VENTILATION AND INDOOR AIR QUALITY**

<sup>3</sup> Uniform Mechanical Code may have more stringent ventilation requirements; the most stringent code requirement takes precedence.  
<sup>4</sup> See Standards Tables 120.1-A and 120.1-B.  
<sup>5</sup> For lecture halls with fixed seating, the expected number of occupants shall be determined in accordance with the California Building Code.  
<sup>6</sup> §120.2(e)(3) requires systems serving rooms that are required by §130.1(c) to have lighting occupancy sensing controls to also have occupancy sensing zone controls for ventilation. Examples of spaces which require lighting occupancy sensors include offices 250ft<sup>2</sup> or smaller, multipurpose rooms less than 1,000 ft<sup>2</sup>, classrooms, conference rooms, restrooms, aisles and open areas in warehouses, library book stack aisles, corridors, stairwells, parking garages, and loading and unloading zones, unless excepted by §130.1(c).

**K. TERMINAL BOX CONTROLS**  
 This section does not apply to this project.

**L. DISTRIBUTION (DUCTWORK and PIPING)**  
 This table is used to show compliance with mandatory pipe insulation requirements found in §120.3 and prescriptive requirements found in §140.4(i) for duct leakage testing.

**Duct Leakage Sealing**  
 The answers to the questions below apply to the following duct systems: RTU-1 Duct leakage testing triggered for these systems? No

11	No	The scope of the project includes only duct systems serving healthcare facilities
12	Yes	Duct system provides conditioned air to an occupiable space for a constant volume, single zone, space-conditioning system.
13	Yes	The space conditioning system serves less than 5,000 ft <sup>2</sup> of conditioned floor area.
14	No	The combined surface area of the ducts in the following locations is more than 25% of the total surface area of the entire duct system:
	<input type="checkbox"/>	Outdoors
	<input type="checkbox"/>	In a space directly under a roof that has a U-factor greater than the u-factor of the ceiling, or if the roof does not meet the requirements of §140.3(a)(1)8, or if the roof has fixed vents or openings to the outside/ unconditioned spaces
	<input type="checkbox"/>	In an unconditioned crawl space
	<input type="checkbox"/>	In other unconditioned spaces
15		The scope of the project includes extending an existing duct system, which is constructed, insulated or sealed with asbestos.
16		The scope of the project includes an existing duct system that is documented to have been previously sealed as confirmed through field verification and diagnostic testing in accordance with procedures in the Reference Nonresidential Appendix NA2.
17	Yes	Duct system shall be sealed in accordance with the California Mechanical Code

Registration Number: CA Building Energy Efficiency Standards - 2019 Nonresidential Compliance  
 Registration Date/Time: Report Version: 2019.1.003  
 Registration Provider: Energysoft  
 Schema Version: rev 20200601  
 Report Generated: 2022-08-26 12:02:51



19100 VON KARMAN AVE.  
 SUITE 600  
 IRVINE, CA 92612  
 949.753.7676 T  
 WDPARTNERS.COM

project no. | CMGCE0021

owner



CHIPOTLE MEXICAN GRILL, INC.  
 610 NEWPORT CENTER DRIVE,  
 SUITE 1300  
 NEWPORT BEACH, CA 92660  
 WWW.CHIPOTLE.COM

project info

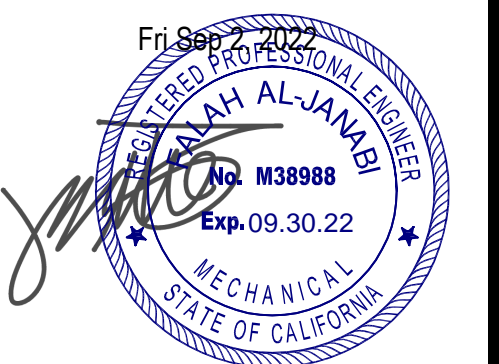
ARENA BOULEVARD CHIPOTLE  
 2650 ARENA BLVD.  
 SACRAMENTO, CA

issue dates

submission: Date  
 permit 02/25/2022  
 bid -  
 revisions: Date  
 # Description  
 1 Rev-1 Plan Check Comments & Client changes 08/29/22

designed by: Y. ZAKI  
 checked by: F. JANABI

seal



sheet info

MECHANICAL  
 TITLE 24 FORMS  
**M801**



19100 VON KARMAN AVE.  
SUITE 600  
IRVINE, CA 92612  
949.753.7676 T  
WDPARTNERS.COM

project no. | CMGCE0021

owner



CHIPOTLE MEXICAN GRILL, INC.  
610 NEWPORT CENTER DRIVE,  
SUITE 1300  
NEWPORT BEACH, CA 92660  
WWW.CHIPOTLE.COM

project info

ARENA BOULEVARD CHIPOTLE  
2650 ARENA BLVD.  
SACRAMENTO, CA

issue dates

<b>submission:</b>	Date
permit bid	02/25/2022
<b>revisions:</b>	Date
# Description	
1 Rev-1 Plan Check Comments & Client changes	08/29/22

designed by: Y. ZAKI  
checked by: F. JANABI

seal



sheet info

MECHANICAL  
TITLE 24 FORMS  
**M802**

STATE OF CALIFORNIA  
**Mechanical Systems**  
NRCC-MCH-E CALIFORNIA ENERGY COMMISSION

**CERTIFICATE OF COMPLIANCE** NRCC-MCH-E

Project Name: Chipotle - Arena & I-5, Sacramento, CA Report Page: (Page 9 of 12)  
Project Address: 2650 Arena Blvd, Suite 1300 Date Prepared: 8/26/2022

**L. DISTRIBUTION (DUCTWORK and PIPING)**

The answers to the questions below apply to the following duct systems: RTU-2 Duct leakage testing triggered for these systems? No

11	No	The scope of the project includes only duct systems serving healthcare facilities		
12	Yes	Duct system provides conditioned air to an occupiable space for a constant volume, single zone, space-conditioning system.		
13	Yes	The space conditioning system serves less than 5,000 ft <sup>2</sup> of conditioned floor area.		
14	No	The combined surface area of the ducts in the following locations is more than 25% of the total surface area of the entire duct system:		
		<input type="checkbox"/> Outdoors		
		<input type="checkbox"/> In a space directly under a roof that has a U-factor greater than the u-factor of the ceiling, or if the roof does not meet the requirements of §140.3(a)(1) or if the roof has fixed vents or openings to the outside/ unconditioned spaces		
		<input type="checkbox"/> In an unconditioned crawl space		
		<input type="checkbox"/> In other unconditioned spaces		
15		The scope of the project includes extending an existing duct system, which is constructed, insulated or sealed with asbestos.		
16		The scope of the project includes an existing duct system that is documented to have been previously sealed as confirmed through field verification and diagnostic testing in accordance with procedures in the Reference Nonresidential Appendix NA2.		
17	Yes	Duct system shall be sealed in accordance with the California Mechanical Code		

**M. COOLING TOWERS**

This section does not apply to this project.

**N. DECLARATION OF REQUIRED CERTIFICATES OF INSTALLATION**

Selections have been made based on information provided in previous tables of this document. If any selection needs to be changed, please explain why in Table E Additional Remarks. These documents must be provided to the building inspector during construction and can be found online at https://www.energy.ca.gov/title24/2019standards/2019\_compliance\_documents/Nonresidential\_Documents/NRC/

Yes	No	Form/Title	Field Inspector	
			Pass	Fail
<input checked="" type="radio"/>	<input type="radio"/>	NRCI-MCH-01-E - Must be submitted for all buildings	<input type="checkbox"/>	<input type="checkbox"/>

Registration Number: CA Building Energy Efficiency Standards - 2019 Nonresidential Compliance  
Registration Date/Time: Report Version: 2019.1.003 Schema Version: rev 20200601  
Registration Provider: Energysoft  
Report Generated: 2022-08-26 12:02:51

STATE OF CALIFORNIA  
**Mechanical Systems**  
NRCC-MCH-E CALIFORNIA ENERGY COMMISSION

**CERTIFICATE OF COMPLIANCE** NRCC-MCH-E

Project Name: Chipotle - Arena & I-5, Sacramento, CA Report Page: (Page 11 of 12)  
Project Address: 2650 Arena Blvd, Suite 1300 Date Prepared: 8/26/2022

**O. DECLARATION OF REQUIRED CERTIFICATES OF ACCEPTANCE**

<input type="radio"/>	<input checked="" type="radio"/>	NRCA-MCH-15-A Thermal Energy Storage (TES) System Acceptance NOTE: This form does not automatically move to "Yes". If Chilled water Storage, Ice-on-Coil Internal Melt, Ice-on-Coil External melt, Ice Harvester, Brine, Ice-Slurry, Eutectic Salt, Clathrate Hydrate Slurry (CHS), Cryogenic or Encapsulated (Ice Ball) Systems are included in the scope, permit applicant should move this form to "Yes".		<input type="checkbox"/>	<input type="checkbox"/>
<input checked="" type="radio"/>	<input type="radio"/>	NRCA-MCH-16-A Supply Air Temperature Reset Controls		<input type="checkbox"/>	<input type="checkbox"/>
<input type="radio"/>	<input checked="" type="radio"/>	NRCA-MCH-17-A Condenser Water Temperature Reset Controls		<input type="checkbox"/>	<input type="checkbox"/>
<input checked="" type="radio"/>	<input type="radio"/>	NRCA-MCH-18-A Energy Management Control Systems		<input type="checkbox"/>	<input type="checkbox"/>
<input type="radio"/>	<input checked="" type="radio"/>	NRCA-MCH-19-A Occupancy Sensor Controls		<input type="checkbox"/>	<input type="checkbox"/>
<input type="radio"/>	<input checked="" type="radio"/>	NRCA-MCH-20 Multi-Family Ventilation		<input type="checkbox"/>	<input type="checkbox"/>
<input type="radio"/>	<input checked="" type="radio"/>	NRCA-MCH-21 Multi-Family Envelope Leakage		<input type="checkbox"/>	<input type="checkbox"/>

**P. DECLARATION OF REQUIRED CERTIFICATES OF VERIFICATION**

Selections have been made based on information provided in previous tables of this document. If any selection needs to be changed, please explain why in Table E Additional Remarks. These documents must be completed by a HERS Rater and provided to the building inspector during construction. The final documents must be created by a HERS Provider's registry, but drafts can be found online at https://www.energy.ca.gov/title24/2019standards/2019\_compliance\_documents/Nonresidential\_Documents/NRCV/

Yes	No	Form/Title	Field Inspector	
			Pass	Fail
<input type="radio"/>	<input checked="" type="radio"/>	NRCV-MCH-04-H Duct Leakage Test NOTE: Must be completed by a HERS Rater	<input type="checkbox"/>	<input type="checkbox"/>
<input type="radio"/>	<input checked="" type="radio"/>	NRCV-MCH-24 Enclosure Air Leakage Worksheet NOTE: Must be completed by a HERS Rater	<input type="checkbox"/>	<input type="checkbox"/>
<input type="radio"/>	<input checked="" type="radio"/>	NRCV-MCH-27 High-rise Residential NOTE: Must be completed by a HERS Rater	<input type="checkbox"/>	<input type="checkbox"/>
<input type="radio"/>	<input checked="" type="radio"/>	NRCV-MCH-32 Local Mechanical Exhaust NOTE: Must be completed by a HERS Rater	<input type="checkbox"/>	<input type="checkbox"/>

**Q. MANDATORY MEASURES DOCUMENTATION LOCATION**

This table is used to indicate where mandatory measures are documented in the plan set or construction documentation.

01		02	
Compliance with Mandatory Measures documented through MCH	Yes	Plan sheet or construction document location	
Mandatory Measures Note Block		M-Sheets	

Registration Number: CA Building Energy Efficiency Standards - 2019 Nonresidential Compliance  
Registration Date/Time: Report Version: 2019.1.003 Schema Version: rev 20200601  
Registration Provider: Energysoft  
Report Generated: 2022-08-26 12:02:51

STATE OF CALIFORNIA  
**Mechanical Systems**  
NRCC-MCH-E CALIFORNIA ENERGY COMMISSION

**CERTIFICATE OF COMPLIANCE** NRCC-MCH-E

Project Name: Chipotle - Arena & I-5, Sacramento, CA Report Page: (Page 10 of 12)  
Project Address: 2650 Arena Blvd, Suite 1300 Date Prepared: 8/26/2022

**O. DECLARATION OF REQUIRED CERTIFICATES OF ACCEPTANCE**

Selections have been made based on information provided in previous tables of this document. If any selection needs to be changed, please explain why in Table E Additional Remarks. These documents must be provided to the building inspector during construction and can be found online at https://www.energy.ca.gov/title24/2019standards/2019\_compliance\_documents/Nonresidential\_Documents/NRCA/

Yes	No	Form/Title	Systems To Be Field Verified	Field Inspector	
				Pass	Fail
<input checked="" type="radio"/>	<input type="radio"/>	NRCA-MCH-02-A - Outdoor Air must be submitted for all newly installed HVAC units. Note: MCH-02-A can be performed in conjunction with MCH-07-A Supply Fan VFD Acceptance (if applicable) since testing activities overlap.		<input type="checkbox"/>	<input type="checkbox"/>
<input type="radio"/>	<input checked="" type="radio"/>	NRCA-MCH-03-A - Constant Volume Single Zone HVAC NOTE: This form does not automatically move to "Yes". If Constant Volume Single Zone HVAC Systems are included in the scope, permit applicant should move this form to "Yes".		<input type="checkbox"/>	<input type="checkbox"/>
<input type="radio"/>	<input checked="" type="radio"/>	NRCA-MCH-04-A - Air Distribution Duct Leakage		<input type="checkbox"/>	<input type="checkbox"/>
<input checked="" type="radio"/>	<input type="radio"/>	NRCA-MCH-05-A - Air Economizer Controls		<input type="checkbox"/>	<input type="checkbox"/>
<input checked="" type="radio"/>	<input type="radio"/>	NRCA-MCH-06-A Demand Control Ventilation Systems must be submitted for all systems required to employ demand controlled ventilation (refer to §120.1(c)(3) can vary outside ventilation flow rates based on maintaining interior carbon dioxide (CO <sub>2</sub> ) concentration setpoints.		<input type="checkbox"/>	<input type="checkbox"/>
<input type="radio"/>	<input checked="" type="radio"/>	NRCA-MCH-07-A Supply Fan Variable Flow Controls		<input type="checkbox"/>	<input type="checkbox"/>
<input type="radio"/>	<input checked="" type="radio"/>	NRCA-MCH-08-A Valve Leakage Test		<input type="checkbox"/>	<input type="checkbox"/>
<input type="radio"/>	<input checked="" type="radio"/>	NRCA-MCH-09-A Supply Water Temperature Reset Controls		<input type="checkbox"/>	<input type="checkbox"/>
<input type="radio"/>	<input checked="" type="radio"/>	NRCA-MCH-10-A Hydronic System Variable Flow Controls		<input type="checkbox"/>	<input type="checkbox"/>
<input checked="" type="radio"/>	<input type="radio"/>	NRCA-MCH-11-A Automatic Demand Shed Controls		<input type="checkbox"/>	<input type="checkbox"/>
<input checked="" type="radio"/>	<input type="radio"/>	NRCA-MCH-12-A FDD for Packaged Direct Expansion Units		<input type="checkbox"/>	<input type="checkbox"/>
<input checked="" type="radio"/>	<input type="radio"/>	NRCA-MCH-13-A Automatic FDD for Air Handling Units and Zone Terminal Units Acceptance		<input type="checkbox"/>	<input type="checkbox"/>
<input type="radio"/>	<input checked="" type="radio"/>	NRCA-MCH-14-A Distributed Energy Storage DX AC Systems Acceptance NOTE: This form does not automatically move to "Yes". If Distributed Energy System DX AC Systems are included in the scope permit applicant should move this form to "Yes".		<input type="checkbox"/>	<input type="checkbox"/>

Registration Number: CA Building Energy Efficiency Standards - 2019 Nonresidential Compliance  
Registration Date/Time: Report Version: 2019.1.003 Schema Version: rev 20200601  
Registration Provider: Energysoft  
Report Generated: 2022-08-26 12:02:51

STATE OF CALIFORNIA  
**Mechanical Systems**  
NRCC-MCH-E CALIFORNIA ENERGY COMMISSION

**CERTIFICATE OF COMPLIANCE** NRCC-MCH-E

Project Name: Chipotle - Arena & I-5, Sacramento, CA Report Page: (Page 12 of 12)  
Project Address: 2650 Arena Blvd, Suite 1300 Date Prepared: 8/26/2022

**DOCUMENTATION AUTHOR'S DECLARATION STATEMENT**

I certify that this Certificate of Compliance documentation is accurate and complete.

Documentation Author Name: Yasser Zaki  
Documentation Author Signature: [Signature]

Company: WD Partners  
Signature Date: 08/26/2022

Address: 19100 Von Karman Ave.  
City/State/Zip: Irvine CA 92612  
Phone: 949-223-9528

**RESPONSIBLE PERSON'S DECLARATION STATEMENT**

I certify the following under penalty of perjury, under the laws of the State of California:

- The information provided on this Certificate of Compliance is true and correct.
- I am eligible under Division 3 of the Business and Professions Code to accept responsibility for the building design or system design identified on this Certificate of Compliance (responsible designer)
- The energy features and performance specifications, materials, components, and manufactured devices for the building design or system design identified on this Certificate of Compliance conform to the requirements of Title 24, Part 1 and Part 6 of the California Code of Regulations.
- The building design features or system design features identified on this Certificate of Compliance are consistent with the information provided on other applicable compliance documents, worksheets, calculations, plans and specifications submitted to the enforcement agency for approval with this building permit application.
- I will ensure that a completed signed copy of this Certificate of Compliance shall be made available with the building permit(s) issued for the building, and made available to the enforcement agency for all applicable inspections. I understand that a completed signed copy of this Certificate of Compliance is required to be included with the documentation the builder provides to the building owner at occupancy.

Responsible Designer Name: Falah Al-Janabi  
Responsible Designer Signature: [Signature]

Company: WD Partners  
Date Signed: 2022-08-26

Address: 19100 Von Karman Ave., Suite 600  
License: M38988  
City/State/Zip: Irvine CA 92612  
Phone: 949.753.7676

Registration Number: CA Building Energy Efficiency Standards - 2019 Nonresidential Compliance  
Registration Date/Time: Report Version: 2019.1.003 Schema Version: rev 20200601  
Registration Provider: Energysoft  
Report Generated: 2022-08-26 12:02:51



19100 VON KARMAN AVE.  
SUITE 600  
IRVINE, CA 92612  
949.753.7676 T  
WDPARTNERS.COM

project no. | CMGCE0021

owner



CHIPOTLE MEXICAN GRILL, INC.  
610 NEWPORT CENTER DRIVE,  
SUITE 1300  
NEWPORT BEACH, CA 92660  
WWW.CHIPOTLE.COM

project info

ARENA BOULEVARD CHIPOTLE  
2650 ARENA BLVD.  
SACRAMENTO, CA

issue dates

submission: Date  
permit 02/25/2022  
bid -

revisions: Date  
# Description  
1 Rev-1 Plan Check Comments & Client changes 08/29/22

designed by: Y. ZAKI  
checked by: F. JANABI

seal



sheet info

MECHANICAL  
TITLE 24 FORMS  
M803

STATE OF CALIFORNIA  
Domestic Water Heating System  
NRCC-PLB-E CALIFORNIA ENERGY COMMISSION

**CERTIFICATE OF COMPLIANCE** NRCC-PLB-E  
This document is used to demonstrate compliance for nonresidential occupancies with requirements in §110.1, §110.3, §120.3, and §140.5, and with requirements in §141.0 for additions and alterations, for domestic water heating scopes using the prescriptive path. For high-rise residential and hotel/motel occupancies compliance is demonstrated with requirements in §110.1, §110.3, §120.3, §150.0, and §150.1(c)(8), and with requirements §150.2 for additions.

Project Name: Chipotle - Arena & I-5, Sacramento, CA Report Page: (Page 1 of 6)  
Project Address: 2650 Arena Blvd, Suite 1300 Date Prepared: 8/26/2022

**A. GENERAL INFORMATION**

01 Project Location (city)	Newport Beach	02 Climate Zone	12
----------------------------	---------------	-----------------	----

03 Occupancy Types Within Project (select all that apply):  
 Nonresidential  High-Rise Residential  Hotel/Motel  
 State Building  Healthcare Facility  Other (Write in)

**B. PROJECT SCOPE**  
This table includes domestic water heating systems that are within the scope of the permit application and are demonstrating compliance using the prescriptive paths outlined in §140.5, §150.1(c)(8), and §141.0(b)(2) for additions or alterations. Solar water heating systems are documented on the NRCC-SRA compliance document. Combined hydronic water heating systems are documented on the NRCC-MCH compliance document.

01	02	03
My project consists of (check all that apply):	System Type <sup>1,2</sup>	System Components
<input checked="" type="checkbox"/> New system (DHW system being installed for the first time in newly constructed building)	Individual System (serving nonresidential spaces)	<input checked="" type="checkbox"/> Equipment <input checked="" type="checkbox"/> Distribution <input checked="" type="checkbox"/> Controls
<input type="checkbox"/> System Alteration (equipment, distribution or controls)		<input type="checkbox"/> Equipment <input type="checkbox"/> Distribution <input type="checkbox"/> Controls

<sup>1</sup>FOOTNOTES: Point of use water heaters, or other non-central systems used to serve nonresidential spaces, are considered individual systems.  
<sup>2</sup> Dwelling units refers to hotel/motel guest rooms and units in a high-rise residential occupancy.

Registration Number: CA Building Energy Efficiency Standards - 2019 Nonresidential Compliance  
 Registration Date/Time: Report Version: 2019.1.003  
 Registration Provider: Energysoft Schema Version: rev 20190401  
 Report Generated: 2022-08-26 12:02:51

STATE OF CALIFORNIA  
Domestic Water Heating System  
NRCC-PLB-E CALIFORNIA ENERGY COMMISSION

**CERTIFICATE OF COMPLIANCE** NRCC-PLB-E  
Project Name: Chipotle - Arena & I-5, Sacramento, CA Report Page: (Page 3 of 6)  
Project Address: 2650 Arena Blvd, Suite 1300 Date Prepared: 8/26/2022

**F. DOMESTIC HOT WATER EQUIPMENT**  
This table is used to demonstrate compliance with mandatory equipment requirements in §110.1 and §110.3. For high-rise residential and hotel/motel occupancies, compliance with prescriptive requirements in §150.1(c)(8) must also be demonstrated and with §150.2 for addition and alteration scopes.

Equipment Schedule: Individual Systems

01	02	03	04	05	06
Name or Item Tag	Equipment Type	Volume (gal)	Max GPM/ First Hour Rating (FHR)	Rated Uniform Energy Factor (UEF)	Minimum Required Uniform Energy Factor (UEF) <sup>1</sup>
Navien NPE-240A	Gas-Fired Instantaneous (50,000-200,000 BTUH)	<=2	0 <= GPM <1.7	0.96	0.8

<sup>1</sup>FOOTNOTE: Compliant equipment may be found in the Modernized Appliance Efficiency Database System (MAEDBS) on the Energy Commission website: <https://caenergy.com/Pages/Search/AdvancedSearch.aspx>

**Water Heating Equipment All Occupancies**

	Yes	No	Not Applicable	Requirement
18	<input type="checkbox"/>	<input type="checkbox"/>	<input checked="" type="checkbox"/>	Unfired storage tank insulation shall have Internal + External >=R-16 OR External >=R-12. Label required per §110.3(c)(3)
19	<input type="checkbox"/>	<input type="checkbox"/>	<input checked="" type="checkbox"/>	New state buildings: 60% of energy for service water heating from site solar energy or recovered energy per §110.3(c)(5)
20	<input type="checkbox"/>	<input type="checkbox"/>	<input checked="" type="checkbox"/>	Isolation valves for instantaneous water heater with input rating <=6.8 kBTUH or 2 kW has been specified per §110.3(c)(6)

**G. DOMESTIC HOT WATER DISTRIBUTION SYSTEM**  
This table is used to demonstrate compliance for nonresidential occupancies with distribution requirements in §120.3 and §140.5. For high-rise residential and hotel/motel occupancies, compliance is demonstrated with requirements §110.3(c), §120.3, §150.0, §150.1

**Mandatory Pipe Insulation All Occupancies**

12	<input checked="" type="checkbox"/>	For systems serving nonresidential spaces, pipe insulation for the following applications is specified to comply with Table 120.3-A (see below) per §120.3: <ul style="list-style-type: none"> <li>Recirculating system piping, including supply and return piping of the water heater</li> <li>The first 8 ft of hot and cold outlet piping, including between storage tank and heat trap, for a nonrecirculating storage system</li> <li>Pipes that are externally heated</li> </ul>
13	<input checked="" type="checkbox"/>	Insulation shall be protected from damage, including that due to sunlight, moisture, equipment maintenance, and wind. Insulation exposed to weather shall be installed with a cover suitable for outdoor service per §120.3(b) and §150.0(i)(3)

Registration Number: CA Building Energy Efficiency Standards - 2019 Nonresidential Compliance  
 Registration Date/Time: Report Version: 2019.1.003  
 Registration Provider: Energysoft Schema Version: rev 20190401  
 Report Generated: 2022-08-26 12:02:51

STATE OF CALIFORNIA  
Domestic Water Heating System  
NRCC-PLB-E CALIFORNIA ENERGY COMMISSION

**CERTIFICATE OF COMPLIANCE** NRCC-PLB-E  
Project Name: Chipotle - Arena & I-5, Sacramento, CA Report Page: (Page 2 of 6)  
Project Address: 2650 Arena Blvd, Suite 1300 Date Prepared: 8/26/2022

**C. COMPLIANCE RESULTS**  
Table C will indicate if the project data input into the compliance document is compliant with water heating requirements. If this table says "DOES NOT COMPLY" or "COMPLIES with Exceptional Conditions" refer to Table D. or the table indicated as not compliant for guidance.

01	02	03	04
Domestic Hot Water Equipment	Distribution Systems	Controls	Compliance Results
Table F	Table G	Table H	
Yes	Yes	Yes	COMPLIES

**D. EXCEPTIONAL CONDITIONS**  
This table is auto-filled with uneditable comments because of selections made or data entered in tables throughout the form.

**E. ADDITIONAL REMARKS**  
This table is includes remarks made by the permit applicant to the Authority Having Jurisdiction.

Registration Number: CA Building Energy Efficiency Standards - 2019 Nonresidential Compliance  
 Registration Date/Time: Report Version: 2019.1.003  
 Registration Provider: Energysoft Schema Version: rev 20190401  
 Report Generated: 2022-08-26 12:02:51

STATE OF CALIFORNIA  
Domestic Water Heating System  
NRCC-PLB-E CALIFORNIA ENERGY COMMISSION

**CERTIFICATE OF COMPLIANCE** NRCC-PLB-E  
Project Name: Chipotle - Arena & I-5, Sacramento, CA Report Page: (Page 4 of 6)  
Project Address: 2650 Arena Blvd, Suite 1300 Date Prepared: 8/26/2022

**G. DOMESTIC HOT WATER DISTRIBUTION SYSTEM**

**TABLE 120.3-A PIPE INSULATION THICKNESS**

Fluid Temperature Range (°F)	Conductivity Range (BTU-in per hour per ft² per °F)	Insulation Mean Rating Temp (°F)	Nominal Pipe Diameter (in)		
			< 1	1 to <1.5	1.5 to <4
105-140	0.22 - 0.28	100	1.0 in or R-7.7	1.5 in or R-12.5	1.5 in or R-11

**H. DOMESTIC HOT WATER CONTROLS**  
This table is used to demonstrate compliance with control requirements in §110.3 for all occupancies. For high-rise residential and hotel/motel occupancies, compliance is also demonstrated with requirements in §150.1(c)(8).

	Yes	No	Not Applicable	Requirement
01	<input checked="" type="checkbox"/>	<input type="checkbox"/>	<input type="checkbox"/>	Construction documents require manufacturer certification that service water-heating systems are equipped with automatic temperature controls capable of adjusting temperature settings per §110.3(a).
02	<input checked="" type="checkbox"/>	<input type="checkbox"/>	<input type="checkbox"/>	Systems with capacity > 167,000 BTUH equipped with outlet temperature controls per §110.3(c)(1) unless covered by California Plumbing Code 613.0.
03	<input type="checkbox"/>	<input type="checkbox"/>	<input checked="" type="checkbox"/>	Controls for circulating pumps or electrical heat trace systems are capable of automatically turning off the system per §110.3(c)(2) unless systems serves healthcare facility.
04	<input type="checkbox"/>	<input type="checkbox"/>	<input checked="" type="checkbox"/>	For recirculation systems serving multiple dwelling units, design includes automatic pump controls per §150.1(c)(8)(ii) or §150.2 for additions or alterations.
05	<input type="checkbox"/>	<input type="checkbox"/>	<input checked="" type="checkbox"/>	For recirculation systems serving individual dwelling units, design includes manual on/off controls as specified in Reference Appendix RA4.4.9 per §150.1(c)(8).
06	<input type="checkbox"/>	<input type="checkbox"/>	<input checked="" type="checkbox"/>	For replacement single heat pump water heaters serving individual dwelling units in climate zone 1-15, design includes communication interface that meets demand responsive control requirements of §110.12(a) per §150.2(b)(1)(iii).

Registration Number: CA Building Energy Efficiency Standards - 2019 Nonresidential Compliance  
 Registration Date/Time: Report Version: 2019.1.003  
 Registration Provider: Energysoft Schema Version: rev 20190401  
 Report Generated: 2022-08-26 12:02:51

STATE OF CALIFORNIA  
**Domestic Water Heating System**  
 NRCC-PLB-E CALIFORNIA ENERGY COMMISSION

**CERTIFICATE OF COMPLIANCE** NRCC-PLB-E  
 Project Name: Chipotle - Arena & I-5, Sacramento, CA Report Page: (Page 5 of 6)  
 Project Address: 2650 Arena Blvd, Suite 1300 Date Prepared: 8/26/2022

**I. DECLARATION OF REQUIRED CERTIFICATES OF INSTALLATION**  
 Selections have been made based on information provided in this document. If any selection has been changed by permit applicant, an explanation should be included in Table E. Additional Remarks. These documents must be provided to the building inspector during construction and can be found online at https://www.energy.ca.gov/title24/2019standards/2019\_compliance\_documents/Nonresidential\_Documents/NRCC/

Yes	No	Form/Title	Field Inspector	
			Pass	Fail
<input checked="" type="radio"/>	<input type="radio"/>	NRCC-PLB-01-E - Must be submitted for all buildings	<input type="checkbox"/>	<input type="checkbox"/>
<input type="radio"/>	<input checked="" type="radio"/>	NRCC-PLB-02-E - Must be submitted for high-rise residential and hotel/motel central hot water distribution systems to be recognized for compliance.	<input type="checkbox"/>	<input type="checkbox"/>
<input type="radio"/>	<input checked="" type="radio"/>	NRCC-PLB-03-E - Must be submitted for high-rise residential and hotel/motel single dwelling unit hot water distribution systems to be recognized for compliance.	<input type="checkbox"/>	<input type="checkbox"/>

**J. DECLARATION OF REQUIRED CERTIFICATES OF ACCEPTANCE**  
 There are no Certificates of Acceptance applicable to service water heating requirements.

**K. DECLARATION OF REQUIRED CERTIFICATES OF VERIFICATION**  
 Selections have been made based on information provided in this document. If any selection has been changed by permit applicant, an explanation should be included in Table E. Additional Remarks. These documents must be completed by a HERS Rater and provided to the building inspector during construction. The final documents must be created by a HERS Providers registry, but drafts can be found online at https://www.energy.ca.gov/title24/2019standards/2019\_compliance\_documents/Nonresidential\_Documents/NRCC/

Yes	No	Form/Title	Field Inspector	
			Pass	Fail
<input type="radio"/>	<input checked="" type="radio"/>	NRCV-PLB-21-H High-rise Residential Central Hot Water Distribution HERS Verification	<input type="checkbox"/>	<input type="checkbox"/>
<input type="radio"/>	<input checked="" type="radio"/>	NRCV-PLB-22-H High-rise Residential Individual Dwelling Unit Hot Water Distribution HERS Verification	<input type="checkbox"/>	<input type="checkbox"/>

Registration Number: CA Building Energy Efficiency Standards - 2019 Nonresidential Compliance  
 Registration Date/Time: Report Version: 2019.1.003  
 Registration Provider: Energysoft Schema Version: rev 20190401  
 Report Generated: 2022-08-26 12:02:51

STATE OF CALIFORNIA  
**Process Systems**  
 NRCC-PRC-E CALIFORNIA ENERGY COMMISSION

**CERTIFICATE OF COMPLIANCE** NRCC-PRC-E  
 This document demonstrates compliance for process systems that are within the scope of the permit application and are regulated by mandatory requirements in §120.6 or prescriptive requirements in §140.9. This compliance document is used for newly constructed, addition and alteration projects.  
 Project Name: Chipotle - Arena & I-5, Sacramento, CA Report Page: (Page 1 of 6)  
 Project Address: 2650 Arena Blvd, Suite 1300 Date Prepared: 8/26/2022

**A. GENERAL INFORMATION**

01 Project Location (city)	Newport Beach	04 Total Conditioned Floor Area	1970
02 Climate Zone	12	05 Total Unconditioned Floor Area	0
03 Occupancy Types Within Project:		06 # of Stories (Habitable Above Grade)	1
<input checked="" type="checkbox"/> Office	<input checked="" type="checkbox"/> Retail	<input type="checkbox"/> Non-refrigerated Warehouse	
<input type="checkbox"/> Hotel/ Motel	<input type="checkbox"/> School	<input type="checkbox"/> Healthcare Facility	
<input type="checkbox"/> High-Rise Residential	<input type="checkbox"/> Relocatable Class Bldg	<input checked="" type="checkbox"/> Other (write in)	

**B. PROJECT SCOPE**  
 This table includes process systems that are within the scope of the permit application and are demonstrating compliance with mandatory requirements in §120.6 or prescriptive requirements in §140.9.

My project consists of: (check all that apply):

01	02
<input type="checkbox"/> Refrigerated Spaces <3,000 ft <sup>2</sup> Total (no Title 24, Pt6 requirements)	<input type="checkbox"/> Elevator Lighting & Ventilation Controls (mandatory §120.6(f))
<input type="checkbox"/> Refrigerated Spaces ≥3,000 ft <sup>2</sup> Total (mandatory §120.6(a))	<input type="checkbox"/> Escalator & Moving Walkway Speed Controls (mandatory §120.6(g))
<input type="checkbox"/> Food Stores >8,000 ft <sup>2</sup> cfa (mandatory §120.6(b))	<input type="checkbox"/> Computer Rooms >20 W/ ft <sup>2</sup> Power Density (prescriptive §140.9(a)) <sup>1</sup>
<input type="checkbox"/> Enclosed Parking Garage Exhaust ≥10,000 cfm (mandatory §120.6(c))	<input checked="" type="checkbox"/> Commercial Kitchen Ventilation/Exhaust (prescriptive §140.9(b)) <sup>1</sup>
<input type="checkbox"/> Newly Installed Process Boilers (mandatory §120.6(d))	<input type="checkbox"/> Laboratory Exhaust/Factory Exhaust & Fume Hood (prescriptive §140.9(c)) <sup>1</sup>
<input type="checkbox"/> Compressed Air Systems Combined HP ≥25 (mandatory §120.6(e))	

<sup>1</sup> FOOTNOTES: These building features can comply using the performance method. If using the performance method for these features, compliance should be demonstrated on the NRCC-PRF-E.

Registration Number: CA Building Energy Efficiency Standards - 2019 Nonresidential Compliance  
 Registration Date/Time: Report Version: 2019.1.003  
 Registration Provider: Energysoft Schema Version: rev 20200601  
 Report Generated: 2022-08-26 12:02:50

STATE OF CALIFORNIA  
**Domestic Water Heating System**  
 NRCC-PLB-E CALIFORNIA ENERGY COMMISSION

**CERTIFICATE OF COMPLIANCE** NRCC-PLB-E  
 Project Name: Chipotle - Arena & I-5, Sacramento, CA Report Page: (Page 6 of 6)  
 Project Address: 2650 Arena Blvd, Suite 1300 Date Prepared: 8/26/2022

**DOCUMENTATION AUTHOR'S DECLARATION STATEMENT**  
 I certify that this Certificate of Compliance documentation is accurate and complete.

Documentation Author Name: Yasser Zaki  
 Documentation Author Signature: [Signature]  
 Company: WD Partners  
 Address: 19100 Von Karman Ave.  
 City/State/Zip: Irvine CA 92612  
 Signature Date: 2022-08-26  
 CEA/HERS Certification Identification (if applicable):  
 Phone: 949-223-9528

**RESPONSIBLE PERSON'S DECLARATION STATEMENT**  
 I certify the following under penalty of perjury, under the laws of the State of California:

- The information provided on this Certificate of Compliance is true and correct.
- I am eligible under Division 3 of the Business and Professions Code to accept responsibility for the building design or system design identified on this Certificate of Compliance (responsible designer).
- The energy features and performance specifications, materials, components, and manufactured devices for the building design or system design identified on this Certificate of Compliance conform to the requirements of Title 24, Part 1 and Part 6 of the California Code of Regulations.
- The building design features or system design features identified on this Certificate of Compliance are consistent with the information provided on other applicable compliance documents, worksheets, calculations, plans and specifications submitted to the enforcement agency for approval with this building permit application.
- I will ensure that a completed signed copy of this Certificate of Compliance shall be made available with the building permit(s) issued for the building, and made available to the enforcement agency for all applicable inspections. I understand that a completed signed copy of this Certificate of Compliance is required to be included with the documentation the builder provides to the building owner at occupancy.

Responsible Designer Name: Falah-Al-Janabi  
 Responsible Designer Signature: [Signature]  
 Company: WD Partners  
 Address: 19100 Von Karman Ave., Suite 600  
 City/State/Zip: Irvine CA 92612  
 Date Signed: 2022-08-26  
 License: M38988  
 Phone: 949.753.7676

Registration Number: CA Building Energy Efficiency Standards - 2019 Nonresidential Compliance  
 Registration Date/Time: Report Version: 2019.1.003  
 Registration Provider: Energysoft Schema Version: rev 20190401  
 Report Generated: 2022-08-26 12:02:51

STATE OF CALIFORNIA  
**Process Systems**  
 NRCC-PRC-E CALIFORNIA ENERGY COMMISSION

**CERTIFICATE OF COMPLIANCE** NRCC-PRC-E  
 Project Name: Chipotle - Arena & I-5, Sacramento, CA Report Page: (Page 2 of 6)  
 Project Address: 2650 Arena Blvd, Suite 1300 Date Prepared: 8/26/2022

**C. COMPLIANCE RESULTS**  
 Results in this table are automatically calculated from data input and calculations in Tables F through O. Note: If any cell on this table says "COMPLIES with Exceptional Conditions" refer to Table D. Exceptional Conditions for guidance or see applicable Table referenced below.

01	02	03	04	05	06	07	08	09	10	11
Refrigerated Warehouse/Space §120.6(a) (See Table F)	Commercial Refrigeration §120.6(b) (See Table G)	Parking Garage Exhaust §120.6(c) (See Table H)	Process Boilers §120.6(d) (See Table I)	Compressed Air Systems §120.6(e) (See Table J)	Elevators §120.6(f) (See Table K)	Escalators & Moving Walkways §120.6(g) (See Table L)	Computer Rooms §140.9(a) (See Table M)	Commercial Kitchens §140.9(b) (See Table N)	Laboratory/Factory Exhaust §140.9(c) (See Table O)	Compliance Results
								Yes		COMPLIES

**D. EXCEPTIONAL CONDITIONS**  
 This table is auto-filled with uneditable comments because of selections made or data entered in tables throughout the form.

**E. ADDITIONAL REMARKS**  
 This table includes remarks made by the permit applicant to the Authority Having Jurisdiction.

**F. REFRIGERATED WAREHOUSES/SPACES**  
 This section does not apply to this project.

**G. COMMERCIAL REFRIGERATION**  
 This section does not apply to this project.

**H. ENCLOSED PARKING GARAGE EXHAUST**  
 This section does not apply to this project.

**I. PROCESS BOILER**  
 This section does not apply to this project.

**J. COMPRESSED AIR SYSTEMS**  
 This section does not apply to this project.

Registration Number: CA Building Energy Efficiency Standards - 2019 Nonresidential Compliance  
 Registration Date/Time: Report Version: 2019.1.003  
 Registration Provider: Energysoft Schema Version: rev 20200601  
 Report Generated: 2022-08-26 12:02:50



19100 VON KARMAN AVE.  
 SUITE 600  
 IRVINE, CA 92612  
 949.753.7676 T  
 WDPARTNERS.COM

project no. | CMGCE0021

owner



CHIPOTLE MEXICAN GRILL, INC.  
 610 NEWPORT CENTER DRIVE,  
 SUITE 1300  
 NEWPORT BEACH, CA 92660  
 WWW.CHIPOTLE.COM

project info

ARENA BOULEVARD CHIPOTLE  
 2650 ARENA BLVD.  
 SACRAMENTO, CA

issue dates

submission:	Date
permit bid	02/25/2022
revisions:	Date
# Description	Date
1 Rev-1 Plan Check Comments & Client changes	08/29/22

designed by: Y. ZAKI  
 checked by: F. JANABI

seal



sheet info

MECHANICAL  
 TITLE 24 FORMS  
**M804**



19100 VON KARMAN AVE.  
SUITE 600  
IRVINE, CA 92612  
949.753.7676 T  
WDPARTNERS.COM

project no. | CMGCE0021

owner



CHIPOTLE MEXICAN GRILL, INC.  
610 NEWPORT CENTER DRIVE,  
SUITE 1300  
NEWPORT BEACH, CA 92660  
WWW.CHIPOTLE.COM

project info

ARENA BOULEVARD CHIPOTLE  
2650 ARENA BLVD.  
SACRAMENTO, CA

issue dates

submission:	Date
permit bid	02/25/2022
revisions:	Date
# Description	Date
1 Rev-1 Plan Check Comments & Client changes	08/29/22

designed by: Y. ZAKI  
checked by: F. JANABI

seal



sheet info

MECHANICAL  
TITLE 24 FORMS  
**M805**

STATE OF CALIFORNIA  
**Process Systems**  
NRCC-PRC-E CALIFORNIA ENERGY COMMISSION

**CERTIFICATE OF COMPLIANCE** NRCC-PRC-E  
Project Name: Chipotle - Arena & I-5, Sacramento, CA Report Page: (Page 3 of 6)  
Project Address: 2650 Arena Blvd, Suite 1300 Date Prepared: 8/26/2022

**K. ELEVATOR LIGHTING AND VENTILATION**  
This section does not apply to this project.

**L. ESCALATORS AND MOVING WALKWAYS SPEED CONTROLS**  
This section does not apply to this project.

**M. COMPUTER ROOM SYSTEM SUMMARY**  
This section does not apply to this project.

**N. COMMERCIAL KITCHEN EXHAUST AND VENTILATION**  
This table contains all new and replacement hoods being installed within the scope of the permit application. Table N is used to demonstrate compliance with prescriptive requirements found in §140.9(b).

**Kitchen Ventilation §140.9(b)2**

01	<input type="checkbox"/>	Existing kitchen hoods not being replaced as part of an addition or alteration (do not need to meet requirements)				
<b>Requirements</b>						
02	<input type="checkbox"/>	Replacement Air to Hood Compliance Method §140.9(b)1A Providing replacement air directly to the hood(s) that does not exceed 10% of the hood(s) exhaust rate				
03	<input type="checkbox"/>	Mechanically cooled or heated makeup air delivered to any space with a kitchen hood is designed per 140.9(b)2A to not exceed the greater of: The hood exhaust flow minus the available transfer air from adjacent spaces				
04	<input type="checkbox"/>	Location that is supplying transfer air:				
05	<input type="checkbox"/>	The kitchen/ dining facility has a total Type I and Type II kitchen hood exhaust airflow > 5000 cfm and is designed to have one of the following per 140.9(b)2B: NA: Not a kitchen/ dining facility having a total Type I and Type II kitchen hood exhaust airflow rate > 5,000 cfm				
<b>Kitchen Exhaust: Airflow Rate §140.9(b)1B</b>						
01	Kitchen Name or Item Tag	Kitchen	Compliance Method per §140.9(b)1B	Type I hood design exhaust rates do not exceed the maximum allowed per §140.9(b)1 as documented below		
02	03	04	05	06	07	08
Name or Item Tag	Hood Type <sup>1</sup>	Hood Style	Hood Length (ft)	Equipment Duty	Design Hood Exhaust Rate CFM	Max Hood Exhaust Rate Allowed CFM
	Type I	Wall-mounted Canopy	14.25	Heavy Duty	3200	3990

Registration Number: CA Building Energy Efficiency Standards - 2019 Nonresidential Compliance  
Registration Date/Time: Report Version: 2019.1.003  
Registration Provider: Energysoft Schema Version: rev 20200601  
Report Generated: 2022-08-26 12:02:50

STATE OF CALIFORNIA  
**Process Systems**  
NRCC-PRC-E CALIFORNIA ENERGY COMMISSION

**CERTIFICATE OF COMPLIANCE** NRCC-PRC-E  
Project Name: Chipotle - Arena & I-5, Sacramento, CA Report Page: (Page 5 of 6)  
Project Address: 2650 Arena Blvd, Suite 1300 Date Prepared: 8/26/2022

**Q. DECLARATION OF REQUIRED CERTIFICATES OF ACCEPTANCE**  
Selections have been made based on information provided in this document. If any selection have been changed by permit applicant, an explanation should be included in Table E. Additional Remarks. These documents must be provided to the building inspector during construction and must be completed through an Acceptance Test Technician Certification Provider (ATTCP). For more information visit: <http://www.energy.ca.gov/title24/attcp/providers.html>

Yes	No	Form/Title	Field Inspector	
			Pass	Fail
<input checked="" type="radio"/>	<input type="radio"/>	NRCA-PRC-01-F Compressed Air Systems	<input type="checkbox"/>	<input type="checkbox"/>
<input checked="" type="radio"/>	<input type="radio"/>	NRCA-PRC-02-F Kitchen Exhaust	<input type="checkbox"/>	<input type="checkbox"/>
<input checked="" type="radio"/>	<input type="radio"/>	NRCA-PRC-03-F Garage Exhaust	<input type="checkbox"/>	<input type="checkbox"/>
<input checked="" type="radio"/>	<input type="radio"/>	NRCA-PRC-04-F Refrigerated Warehouses - Evaporator Fan Motor Controls	<input type="checkbox"/>	<input type="checkbox"/>
<input checked="" type="radio"/>	<input type="radio"/>	NRCA-PRC-05-F Refrigerated Warehouses - Evaporative Condenser Controls	<input type="checkbox"/>	<input type="checkbox"/>
<input checked="" type="radio"/>	<input type="radio"/>	NRCA-PRC-06-F Refrigerated Warehouses - Air Cooled Condenser Controls	<input type="checkbox"/>	<input type="checkbox"/>
<input checked="" type="radio"/>	<input type="radio"/>	NRCA-PRC-16-F Refrigerated Warehouses - Adiabatic Condenser Controls	<input type="checkbox"/>	<input type="checkbox"/>
<input checked="" type="radio"/>	<input type="radio"/>	NRCA-PRC-07-F Refrigerated Warehouses - Variable Speed Compressor	<input type="checkbox"/>	<input type="checkbox"/>
<input checked="" type="radio"/>	<input type="radio"/>	NRCA-PRC-08-F Refrigerated Warehouses - Electric Resistance Underlab Heating System	<input type="checkbox"/>	<input type="checkbox"/>
<input checked="" type="radio"/>	<input type="radio"/>	NRCA-PRC-12-F Elevator Lighting & Ventilation Controls	<input type="checkbox"/>	<input type="checkbox"/>
<input checked="" type="radio"/>	<input type="radio"/>	NRCA-PRC-13-F Escalators & Moving Walkways Speed Controls	<input type="checkbox"/>	<input type="checkbox"/>
<input checked="" type="radio"/>	<input type="radio"/>	NRCA-PRC-14-F Lab Exhaust Ventilation Systems	<input type="checkbox"/>	<input type="checkbox"/>
<input checked="" type="radio"/>	<input type="radio"/>	NRCA-PRC-15-F Fume Hood Automatic Sash Closure Systems	<input type="checkbox"/>	<input type="checkbox"/>

Registration Number: CA Building Energy Efficiency Standards - 2019 Nonresidential Compliance  
Registration Date/Time: Report Version: 2019.1.003  
Registration Provider: Energysoft Schema Version: rev 20200601  
Report Generated: 2022-08-26 12:02:50

STATE OF CALIFORNIA  
**Process Systems**  
NRCC-PRC-E CALIFORNIA ENERGY COMMISSION

**CERTIFICATE OF COMPLIANCE** NRCC-PRC-E  
Project Name: Chipotle - Arena & I-5, Sacramento, CA Report Page: (Page 4 of 6)  
Project Address: 2650 Arena Blvd, Suite 1300 Date Prepared: 8/26/2022

**N. COMMERCIAL KITCHEN EXHAUST AND VENTILATION**  
FOOTNOTES: Type II hoods do not have a max hood exhaust air rate per §140.9(b)1B

**O. LABORATORY AND FACTORY EXHAUST AND FUME HOODS**  
This section does not apply to this project.

**P. DECLARATION OF REQUIRED CERTIFICATES OF INSTALLATION**  
Selections have been made based on information provided in this document. If any selection have been changed by permit applicant, an explanation should be included in Table E. Additional Remarks. These documents must be provided to the building inspector during construction and can be found online at [https://www.energy.ca.gov/title24/2019standards/2019\\_compliance\\_documents/Nonresidential\\_Documents/NRCI/](https://www.energy.ca.gov/title24/2019standards/2019_compliance_documents/Nonresidential_Documents/NRCI/)

Yes	No	Form/Title	Field Inspector	
			Pass	Fail
<input checked="" type="radio"/>	<input type="radio"/>	NRCI-PRC-01-E - Covered Process	<input type="checkbox"/>	<input type="checkbox"/>

Registration Number: CA Building Energy Efficiency Standards - 2019 Nonresidential Compliance  
Registration Date/Time: Report Version: 2019.1.003  
Registration Provider: Energysoft Schema Version: rev 20200601  
Report Generated: 2022-08-26 12:02:50

STATE OF CALIFORNIA  
**Process Systems**  
NRCC-PRC-E CALIFORNIA ENERGY COMMISSION

**CERTIFICATE OF COMPLIANCE** NRCC-PRC-E  
Project Name: Chipotle - Arena & I-5, Sacramento, CA Report Page: (Page 6 of 6)  
Project Address: 2650 Arena Blvd, Suite 1300 Date Prepared: 8/26/2022

**DOCUMENTATION AUTHOR'S DECLARATION STATEMENT**  
I certify that this Certificate of Compliance documentation is accurate and complete.

Documentation Author Name: Yasser Zaki	Documentation Author Signature:
Company: WD Partners	Signature Date: 08/26/2022
Address: 19100 Von Karman Ave.	CEA/HERS Certification Identification (if applicable):
City/State/Zip: Irvine CA 92612	Phone: 949-223-9528

**RESPONSIBLE PERSON'S DECLARATION STATEMENT**  
I certify the following under penalty of perjury, under the laws of the State of California:

- The information provided on this Certificate of Compliance is true and correct.
- I am eligible under Division 3 of the Business and Professions Code to accept responsibility for the building design or system design identified on this Certificate of Compliance (responsible designer)
- The energy features and performance specifications, materials, components, and manufactured devices for the building design or system design identified on this Certificate of Compliance conform to the requirements of Title 24, Part 1 and Part 6 of the California Code of Regulations.
- The building design features or system design features identified on this Certificate of Compliance are consistent with the information provided on other applicable compliance documents, worksheets, calculations, plans and specifications submitted to the enforcement agency for approval with this building permit application.
- I will ensure that a completed signed copy of this Certificate of Compliance shall be made available with the building permit(s) issued for the building, and made available to the enforcement agency for all applicable inspections. I understand that a completed signed copy of this Certificate of Compliance is required to be included with the documentation the builder provides to the building owner at occupancy.

Responsible Designer Name: Falah Al-Janabi	Responsible Designer Signature:
Company: WD Partners	Date Signed: 2022-08-26
Address: 19100 Von Karman Ave., Suite 600	License: M38988
City/State/Zip: Irvine CA 92612	Phone: 949.753.7676

Registration Number: CA Building Energy Efficiency Standards - 2019 Nonresidential Compliance  
Registration Date/Time: Report Version: 2019.1.003  
Registration Provider: Energysoft Schema Version: rev 20200601  
Report Generated: 2022-08-26 12:02:50