



THE GENERAL CONTRACTOR AND/OR ALL SUB-CONTRACTORS WORKING FROM THESE PLANS AND SPECIFICATIONS ARE NOT TO SCALE SUCH INFORMATION BUT TO CONTACT THE ARCHITECT OR HIS REPRESENTATIVE REGARDING MEASUREMENTS, IF SUCH MEASUREMENTS DO NOT APPEAR CORRECT, ADD UP PROPERLY OR SCALE CORRECTLY TO THE INDICATED SIZE.

ENGINEER

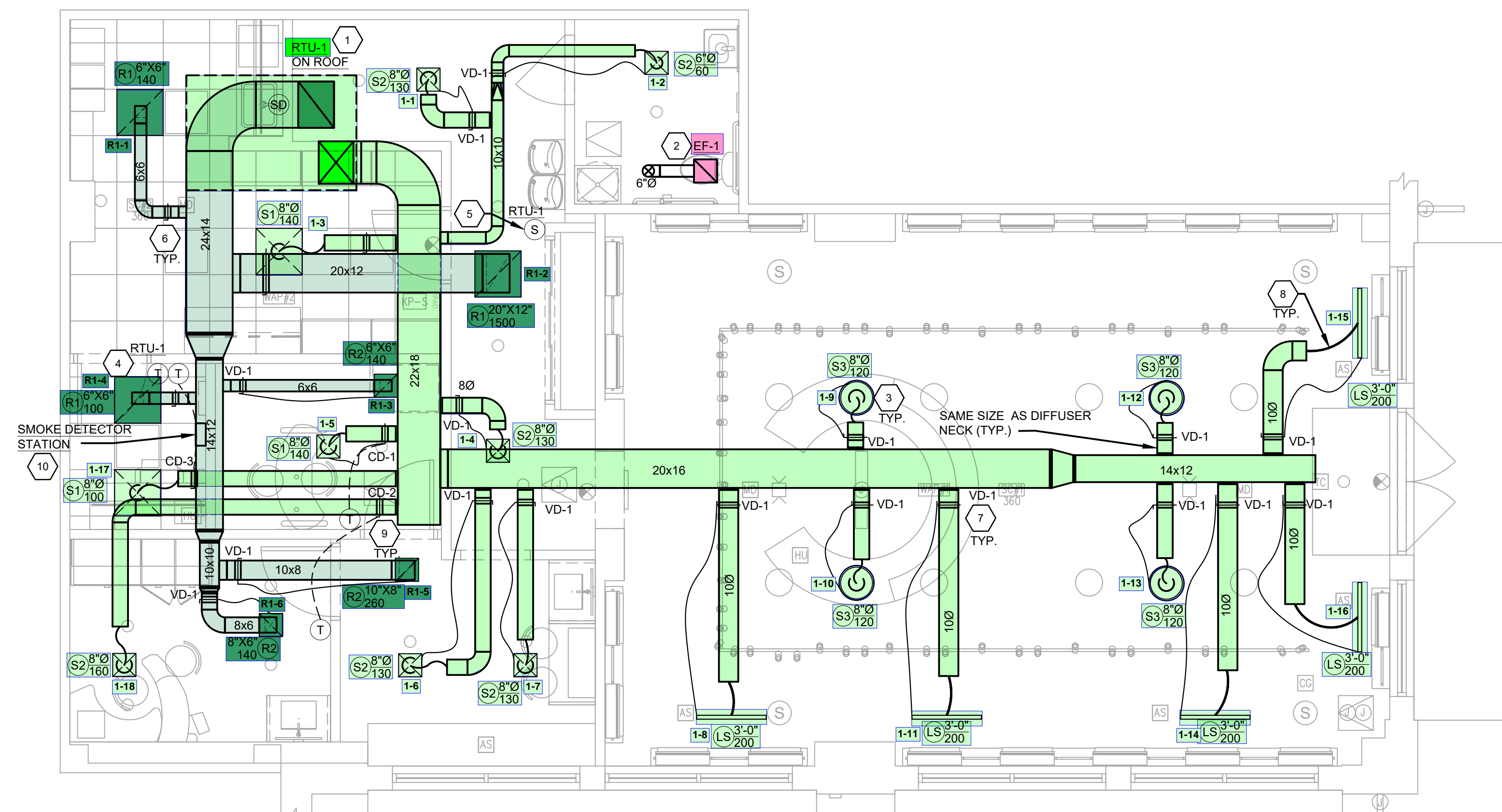


PROJECT NUMBER: 240238 DATE: 06.07.2024

DRAWN BY: SL CHECK BY: JTS

THESE DRAWINGS WERE COMPLETED UNDER THE DIRECT SUPERVISION OF: JTS

ISSUED FOR CLIENT: 05.29.24  
ISSUED FOR LL PERMIT + BID: 06.07.24



1 MECHANICAL PLAN  
SCALE: 1/4" = 1'-0"

GENERAL NOTES

- A. THE GENERAL CONTRACTOR IS RESPONSIBLE AT THE BEGINNING OF THE PROJECT TO MEASURE THE SPACE WHILE REVIEWING THE ARCHITECT'S DRAWINGS TO VERIFY THAT THE INFORMATION CONTAINED IN THE MECHANICAL DOCUMENTS, ON WHICH HE/SHE QUOTED TO THE CLIENT, ARE COMPATIBLE WITH THE WORK TO BE PERFORMED AND THAT ALL SPACES ARE SUFFICIENT IN SIZE FOR THE WORK TO BE COMPLETED INCLUDING WIDTHS, LENGTHS, HEIGHTS, ETC.
- B. ALL MECHANICAL EQUIPMENT / DUCTWORK TO BE MOUNTED / INSTALLED TIGHT TO STRUCTURE.
- C. DUCTWORK MOUNTING SHALL CONFORM TO SMACNA STANDARDS FOR HANGERS AND SUPPORTS.
- D. ALL SUPPLY/RETURN DUCTWORK SHALL BE INTERNALLY LINED IF IT'S NOT EXTERNALLY INSULATED.

KEY NOTES

- 1. INSTALL NEW RTU PER MANUFACTURER'S IOM AND MAINTAIN CLEARANCES. TRANSITION DUCT TO FULL SIZE CONNECTION AT UNIT AS REQUIRED. REFER TO DETAIL 9/M-103.
- 2. PROVIDE NEW TOILET EXHAUST FAN PER SCHEDULE ON M-101. INTERLOCK FAN WITH LIGHT SWITCH. NEW 6" EXHAUST DUCT UP TO ROOF AND TERMINATE INTO A ROOF CAP, EQUIVALENT TO GREENHECK MODEL GRSR SIZE 8. PROVIDE WITH INTEGRAL BIRDSCREEN, PREFABRICATED ROOF CURB AND GRAVITY BACKDRAFT DAMPER. FIELD VERIFY LOCATION AND DISTANCE IN FIELD TO MAINTAIN A MINIMUM DISTANCE OF 10" FROM AIR INTAKE.
- 3. 1-SLOT ROUND DIFFUSER. COORDINATE DIFFUSER LOCATION WITH TRACK LIGHTS, SPEAKERS AND EXISTING STRUCTURE. TRACK LIGHTS AND SPEAKER LOCATIONS SHALL NOT HAVE TO BE RELOCATED WITHOUT PRIOR APPROVAL FROM ARCHITECT AND/OR WARBY PARKER PM. MECHANICAL CONTRACTOR SHALL COORDINATE DIFFUSER LAYOUTS WITH ALL SUB-CONTRACTORS AND TRADES, PRIOR TO ANY FABRICATION OF DUCTWORK.
- 4. PROVIDE NEW THERMOSTAT, REFER TO SHEET M-101 FOR THERMOSTAT SPECIFICATION. WIRE BACK TO (N) RTU-1 ON ROOF. RUN WIRE IN CONDUIT.
- 5. PROVIDE NEW COMPATIBLE BUTTON PROBE TEMPERATURE SENSOR. MOUNT ON WALL AT LOCATION SHOWN AT 60" AFF. WIRE BACK TO THERMOSTAT LOCATED AT MANAGER'S OFFICE. RUN THE WIRE IN CONDUIT.
- 6. PROVIDE MANUAL VOLUME DAMPER WITH LOCKING QUADRANT IN EASILY ACCESSIBLE LOCATION WHEN POSSIBLE. PROVIDE DIFFUSER MOUNTED DAMPERS WHERE DUCT MOUNTED DAMPER WOULD BE INACCESSIBLE. TYPICAL OF BACK OF HOUSE.
- 7. PROVIDE BOWDEN CABLE CONTROLS AS SHOWN (VD-1). COORDINATE EXACT VOLUME DAMPER LOCATION IN FIELD. SEE M-101 FOR PRODUCT SPECIFICATIONS.
- 8. FLEXIBLE DUCT ALLOWED FOR FINAL CONNECTION TO DIFFUSER ONLY. FLEXIBLE DUCT NOT TO EXCEED 5'-0" IN TOTAL LENGTH.
- 9. GENERAL CONTRACTOR TO PROVIDE ACCESS PANELS FOR CD. REFER TO ARCHITECTURAL PLANS FOR ACCESS PANEL DETAILS AND SPECIFICATION.
- 10. SMOKE DETECTOR TEST STATION (SDT) IN MANAGER'S OFFICE WIRE BACK TO RTU FACTORY MOUNTED RETURN AIR SMOKE DETECTOR. PROVIDE A NEW IONIZATION OR PHOTO ELECTRIC TYPE SMOKE DETECTOR INSTALLED IN THE RETURN DUCT. REFER TO DETAIL 8/M-103.

LIBERTY CENTER  
7139 FOUNDRY ROW  
SPACE F-122  
LIBERTY TOWNSHIP, OH 4506

DRAWING NO.

M-102

MECHANICAL PLAN

JEREMY T. SMITH

EEA CONSULTING ENGINEERS

## Issue List

- Diffuser 1-3 missing damper.
- Motorized dampers cannot be controlled/balanced.
- RTU-1 Damper cables do not function or are broken.



**Warby Parker (Liberty Twp, OH)**

**Project Issue Information**

<b>Issue Name :</b>	Diffuser 1-3 missing damper.		
<b>Description :</b>	Diffuser 1-3 missing damper.		
<b>Created By :</b>	National TAB	<b>Assigned To :</b>	National TAB - Nick Payne
<b>Status :</b>	Open		
<b>Priority :</b>	Medium	<b>Asset Tag :</b>	EGRD3
<b>Originated Date :</b>	11/12/2024 - Cody Collett - National TAB		



**Warby Parker (Liberty Twp, OH)**

**Project Issue Information**

**Issue Name :** Motorized dampers cannot be controlled/balanced.  
**Description :** Motorized dampers operate independently in each room and fully open or close based on space demand and cannot be set to a specific position. Motorized dampers cannot be controlled/balanced for diffusers 1-5, 1-16, 1-17. Motors were temporarily disconnected and damper put in a fully open position for testing.

**Created By :** National TAB                      **Assigned To :** National TAB - Nick Payne  
**Status :** Open  
**Priority :** Medium                              **Asset Tag :** RTU1  
**Originated Date :** 11/12/2024 - Cody Collett - National TAB



**Warby Parker (Liberty Twp, OH)**

**Project Issue Information**

**Issue Name :** RTU-1 Damper cables do not function or are broken.  
**Description :** Damper cables do not function or are broken on diffusers 1-1, 1-4, 1-6, 1-9, 1-13  
**Created By :** National TAB                      **Assigned To :** National TAB - Nick Payne  
**Status :** Open  
**Priority :** [Medium](#)                                      **Asset Tag :**  
**Originated Date :** 11/12/2024 - Cody Collett - National TAB