

Report By:

National TAB
1329 E. KEMPER ROAD
SUITE 4210
CINCINNATI, OH 45246



Report: TAB Report
Function: Test, Adjust, & Balance
Date: 09/23/2025
Completed By: National TAB

PROJECT
09-22-25 WAWA #6625 LYNCHBURG, VA

14039 WARDS RD

LYNCHBURG, VA 24501

Client

Wawa
260 West Baltimore Pike

Wawa, PA 19063

National TAB

Project: 09-22-25 WAWA #6625 LYNCHBURG, VA

Table Of Contents

Section	Page #
Summary	3
Remarks	4
Balance Schedule	13
Checklist Data	14
AHU/RTU	25
FAN - Exhaust	34
GRD	39

Project Summary

The summary below provides a quick understanding of our scope of work and general testing procedures. Enclosed in the report is further detail about your building performance including recommendations, asset data, and pictures. Our focus is to work with the trades to remedy any issues or deficiencies during the actual field balancing and not after the balancing has occurred to achieve a positive environment and outcome. The level of success is determined by the availability of the trades, possible parts needed, or time constraints.

RTU's (Roof Top Units) w/ Diffusers

Each of the RTU's were measured at their terminal devices or via traverse to establish a total flow for that unit. Each RTU was adjusted to within tolerance of the engineer's design flow. Each outlet was then adjusted to within tolerance of the design flow. Outside air was measured by reading the intake air opening with a velocity grid and multiplying by the free area. The outside air damper was adjusted until the airflow was within the design requirements. Any equipment that fell outside of that tolerance is noted throughout the report.

General Exhaust Fans w/ Grilles

The general exhaust fans were measured by reading each air device with a flow hood. The total airflow for each fan is equivalent to the sum of these readings. Fan speed was then adjusted so that the airflow was within tolerance of design. Each terminal device was balanced to within tolerance of the design volume using the installed volume dampers. Any equipment that fell outside of this tolerance is noted throughout the report.

Ceiling Exhaust Fans

The ceiling exhaust fans were measured using a flow hood. If speed adjustment was provided, the fan speed was adjusted to within design tolerance. Any equipment that fell outside of this tolerance is noted throughout the report.

Final Building Tests

After completing the test and balance the final building pressure was measured. It was confirmed that the building pressure fell within acceptable tolerances and that the pressure measurement coincides with the actual and design net airflow. Any deviations from these standards are noted throughout the report.

Issue List

- Missing women's restroom damper
- No backdraft damper
- RTU 1 electric heater missing
- RTU 2 in alarm
- RTU 2 return grill missing
- RTU 2 short 1 diffuser
- RTU 3 dampers inaccessible
- RTU 3 in alarm

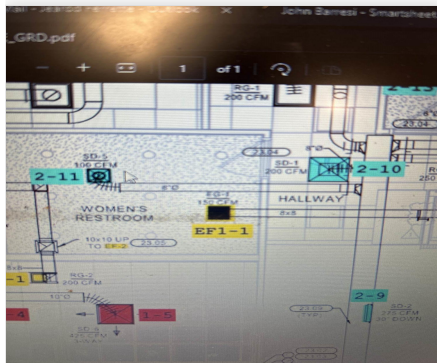


09-22-25 WAWA #6625 LYNCHBURG, VA

Project Issue Information

Issue Name : Missing women's restroom damper
Description : Woman's supply damper/ face damper missing. Currently at 275% off design.
Created By : National TAB **Assigned To :** National TAB - Brianna Biggs
Status : Open
Priority : Low **Asset Tag :** SGRD11
Originated Date : 09/23/2025 - Jearod Ferrette - National TAB

Project Issue File Details



09/23/2025

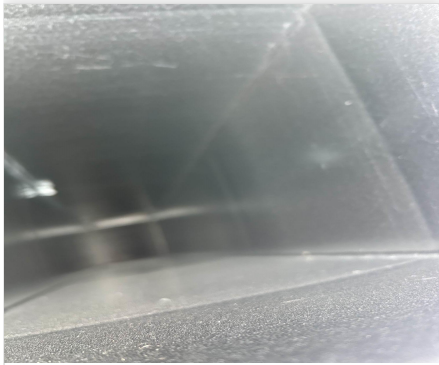


09-22-25 WAWA #6625 LYNCHBURG, VA

Project Issue Information

Issue Name : No backdraft damper
Description : EF 1 does not have backdraft damper
Created By : National TAB **Assigned To :** National TAB - Brianna Biggs
Status : Open
Priority : High **Asset Tag :** HVAQ EQUIPMENT 1
Originated Date : 09/23/2025 - Jearod Ferrette - National TAB

Project Issue File Details



09/23/2025



09/23/2025



09-22-25 WAWA #6625 LYNCHBURG, VA

Project Issue Information

Issue Name : RTU 1 electric heater missing
Description : The electric heater is missing inside the unit.
Created By : National TAB **Assigned To :** National TAB - Brianna Biggs
Status : Closed
Priority : High **Asset Tag :**
Originated Date : 09/22/2025 - Jearod Ferrette - National TAB

Project Issue File Details



09/22/2025

Project Issue Response Details

- **10/07/2025 National TAB - Tyler Youells**
 - Unit is not supposed to be equipped with heat Item closed

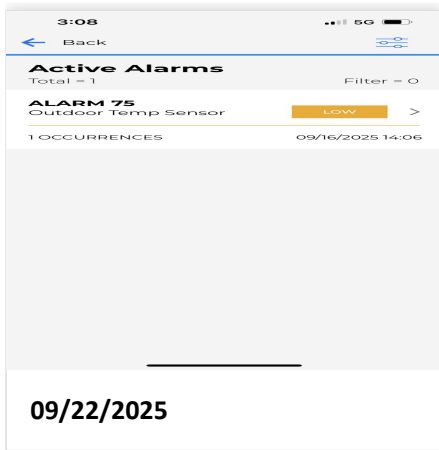


09-22-25 WAWA #6625 LYNCHBURG, VA

Project Issue Information

Issue Name : RTU 2 in alarm
Description : RTU 2 in alarm
Created By : National TAB **Assigned To :** National TAB - Brianna Biggs
Status : Open
Priority : Medium **Asset Tag :** RTU2
Originated Date : 09/22/2025 - Jearod Ferrette - National TAB

Project Issue File Details





09-22-25 WAWA #6625 LYNCHBURG, VA

Project Issue Information

Issue Name : RTU 2 return grill missing
Description : Tech cut out the return for RTU 2 but hasn't place a grill on it.
Created By : National TAB **Assigned To :** National TAB - Brianna Biggs
Status : Open
Priority : Low **Asset Tag :** RTU2
Originated Date : 09/23/2025 - Jearod Ferrette - National TAB

Project Issue File Details



09/23/2025



09-22-25 WAWA #6625 LYNCHBURG, VA

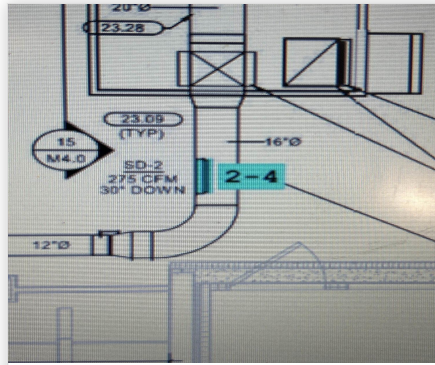
Project Issue Information

Issue Name : RTU 2 short 1 diffuser
Description : RTU 2 SGRD2-4 not installed on ductwork. Unit short 1 supply diffuser.
Created By : National TAB **Assigned To :** National TAB - Brianna Biggs
Status : Open
Priority : Medium **Asset Tag :** SGRD4
Originated Date : 09/22/2025 - Jearod Ferrette - National TAB

Project Issue File Details



09/22/2025



09/22/2025

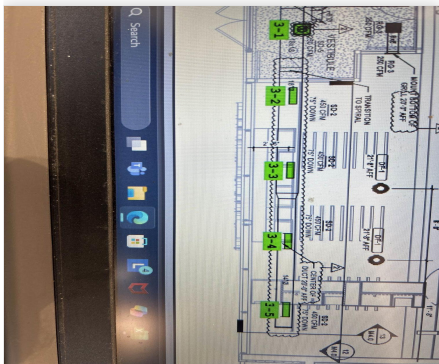


09-22-25 WAWA #6625 LYNCHBURG, VA

Project Issue Information

Issue Name : RTU 3 dampers inaccessible
Description : RTU 3 diffusers 3-1 & 3-5 are inaccessible with lift/ladder. Unit currently at total flow.
Created By : National TAB **Assigned To :** National TAB - Brianna Biggs
Status : Open
Priority : InfoOnly **Asset Tag :**
Originated Date : 09/22/2025 - Jearod Ferrette - National TAB

Project Issue File Details



09/22/2025



09/22/2025

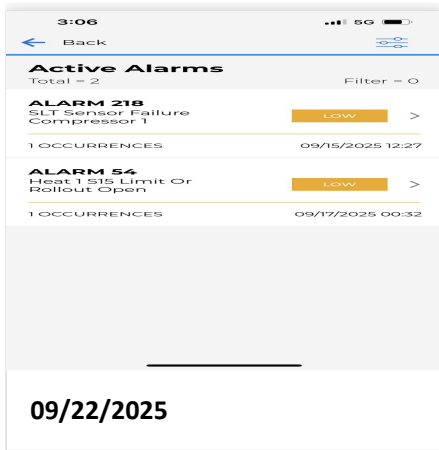


09-22-25 WAWA #6625 LYNCHBURG, VA

Project Issue Information

Issue Name : RTU 3 in alarm
Description : RTU 3 in alarm
Created By : National TAB **Assigned To :** National TAB - Brianna Biggs
Status : Open
Priority : Medium **Asset Tag :** RTU3
Originated Date : 09/22/2025 - Jearod Ferrette - National TAB

Project Issue File Details



AIR BALANCE SCHEDULE

UNIT	AREA SERVED	HVAC SUPPLY		HVAC RETURN		HVAC OUTDOOR		OA %		HOOD MAKE-UP		HOOD EXHAUST		GENERAL EXH.	
		DESIGN	ACTUAL	DESIGN	ACTUAL	DESIGN	ACTUAL	DESIGN	ACTUAL	DESIGN	ACTUAL	DESIGN	ACTUAL	DESIGN	ACTUAL
RTU-1	FOOD SERVICE	4500	4426	3800	3704	700	722	15.6%	16.3%						
RTU-2	RETAIL	3400	3431	3020	3031	380	400	11.2%	11.7%						
RTU-3	FOH	2400	2298	2200	2090	200	208	8.3%	9.1%						
EF-1	RESTROOMS													375	369
EF-2	FOOD SERVICE													400	421
EF-3	TRASH													200	204
TOTALS		10300	10155	9020	8825	1280	1330			0	0	0	0	975	994

NET BUILDING AIRFLOW CALCULATION

TOTALS	DESIGN	ACTUAL
TOTAL OA	1280	1330
TOTAL EXHAUST	975	994
NET AIRFLOW	305	336

DOOR TESTED	BUILDING PRESSURE MEASUREMENTS (IN. H2O)
FRONT	0.008
SIDE	0.004
REAR	0.0007
AVERAGE	0.0042

FINAL CHECKS

- ACTUAL NET AIRFLOW COINCIDES WITH DESIGN: ✓
- MEASURED PRESSURES COINCIDES WITH ACTUAL NET AIRFLOW: ✓
- PRESSURE FALLS WITHIN IMC TOLERANCE OF +/-0.02" W.C. ✓

NOTES:

CheckList List

- 01: RTU's/AHU's
- 02: LENNOX SETUP PARAMETERS
- 03: SENSOR WIRING (LENNOX)
- 04: EF'S
- 05: CLOSEOUT CHECKS



09-22-25 WAWA #6625 LYNCHBURG, VA

CheckList Information

Name : 01: RTU's/AHU's **Status :** Not Completed
Assigned Organization : National TAB **Asset :**
Requesting Organization : National TAB
Created Date : 08/27/2025 - Natasha Louw - National TAB

CheckList Item Details

RTU's/AHU's

All diffusers and grilles are installed and match design? Pass

Comment:

Clean filters installed? Pass

Comment:

Economizers are assembled and functional? Pass

Comment:

Motors are all operating below the FLA rating? Pass

Comment:

Are belts tight? N/A

Comment:

If direct drive unit is the speed controller working? Pass

Comment:

Is gas piping installed and valves turned on? N/A

Comment:

Condensate drains are installed?

Pass

Comment:

Unit free of noticeable noise and vibration

Pass

Comment:

Final outside air damper position is marked with permanent marker?

Pass

Comment:

No alarms present?

Fail

Comment:

RTU 2/3 IN ALARM

Any noticeable duct leakage?

Pass

Comment:

Total supply and OA flows are balanced within +/-5% and supply & return diffusers within +/-10%?

Pass

Comment:

IN TEST MODE, TEST THE FOLLOWING:

Cooling mode is operational? Record EAT/LAT for each unit:

Pass

Comment:

RTU-1/ EAT 71F/LAT 62F RTU-2/ EAT 72 F/LAT 63F RTU-3/ EAT 72F/LAT 59F

Heating mode is operational? Record EAT/LAT for each unit:

N/A

Comment:

Electric heat on site.

Dehumidification mode is operational? (Feel dehumidification coil with your hand. Is it hot?) Record EAT/LAT for each unit:

Pass

Comment:

Electric heat on site. Electric heater not installed RTU-1. Pending issue. RTU-3/ EAT 71F/LAT 79F



09-22-25 WAWA #6625 LYNCHBURG, VA

CheckList Information

Name : 02: LENNOX SETUP PARAMETERS **Status :** Completed

Assigned Organization : National TAB **Asset :**

Requesting Organization : National TAB

Created Date : 08/27/2025 - Natasha Louw - National TAB

Completed Date : 09/23/2025 - John Barresi - National TAB

CheckList Item Details

UNIT ID CONFIGURATIONS

BACNET CONFIGURATION: GO TO SETTINGS>GENERAL>CONFIGURATION ID1 POSITION 5 SET TO "N". Pass

Comment:

NETWORK CONFIGURATION: GO TO SETUP>NETWORK INTEGRATION, SET TO BACNET IP Pass

Comment:

CONTROL MODE: SET CONTROL MODE TO ROOM SENSOR: CO2, TEMP & HUMIDITY (PER UNIT, AS NEEDED). Pass

Comment:

INDIVIDUAL PARAMETER CONFIGURATIONS (MECHANICAL CONTRACTOR TO DEFINE / AS APPLICABLE):

PARAMETER 105 DEHUMID MODE: 7 NO CONDITIONS Pass

Comment:

PARAMETER 106 DEHUMID SETPOINT: 50, THIS IS A CENTERED SET POINT (+/-) Yes

Comment:

PARAMETER 107 DEHUMID DEADBAND: 3 (DEFAULT) THIS IS THE ACTUAL +/- VALUE Pass

Comment:

PARAMETER 117 CO2 DAMPER MAX OPEN: 50%

Pass

Comment:

PARAMETER 118 CO2 START OPEN PPM: 1500

Pass

Comment:

PARAMETER 119 CO2 MAX OPEN PPM: 1500

Pass

Comment:

PARAMETER 137 OCCHET SET POINT: 68 (BACK UP)

Pass

Comment:

PARAMETER 131 SET TO THE SAME % AS THE MINMIUM OA DAMPER SETPOINT

Pass

Comment:

PARAMETER 139 OCC COOLING SET POINT: 72 (BACK UP)

Pass

Comment:

PARAMETER 154 OCC BLOWER MODE: ON-CONTINUOUS 1

Pass

Comment:

CFM VALUES / MSAV FAN SPEEDS (AIR BALANCER TO DEFINE / IF APPLICABLE):

OA DAMPER SET TO SAME POSITION IN ALL FAN SPEEDS?

Pass

Comment:

ALL FAN SPEEDS SET TO THE SAME CFM VALUE (ENTER SETPOINTS BELOW)

Pass

Comment:

RTU-1 80% RTU-2 74% RTU-3 85%

HEAT CFM VALUE: PER THE HVAC SCHEDULE

Pass

Comment:

HIGH COOL CFM VALUE: THE HIGH COOL CFM VALUE

Pass

Comment:

LOW COOL CFM VALUE: MATCH THE HIGH COOL CFM VALUE

Pass

Comment:

VENTILATION CFM VALUE: MATCH THE HIGH COOL CFM VALUE

Pass

Comment:



09-22-25 WAWA #6625 LYNCHBURG, VA

CheckList Information

Name : 03: SENSOR WIRING (LENNOX) **Status :** Completed
Assigned Organization : National TAB **Asset :**
Requesting Organization : National TAB
Created Date : 08/27/2025 - Natasha Louw - National TAB
Completed Date : 09/23/2025 - John Barresi - National TAB

CheckList Item Details

COMBINATION TEMPERATURE/HUMIDITY SENSOR

Sensors are installed where shown on the drawing? Pass

Comment:

2 conductor shielded cable has one wire landed to Vin, one to GND, and the shield wire is not connected. Pass

Comment:

For second shielded cable, one wire is landed to Vout and the shield wire is not connected. Pass

Comment:

Verify that the CORE or Prodigy controller is sensing a relative humidity (record the reading) N/A

Comment:



09-22-25 WAWA #6625 LYNCHBURG, VA

CheckList Information

Name : 04: EF'S **Status :** Completed

Assigned Organization : National TAB **Asset :**

Requesting Organization : National TAB

Created Date : 08/27/2025 - Natasha Louw - National TAB

Completed Date : 09/23/2025 - Jearod Ferrette - National TAB

CheckList Item Details

EF's

Rotation is correct?	Pass
-----------------------------	------

Comment:

Belts are tight (if applicable)?	N/A
---	-----

Comment:

Speed controller installed and functional (if applicable)?	Pass
---	------

Comment:

There is no major leakage around base of fan?	Pass
--	------

Comment:

Is the motor operating below the motor FLA rating?	Pass
---	------

Comment:

Back draft damper installed and can it fully open?	Fail
---	------

Comment:

EF-1 and EF-2 have no back draft damper.

Unit free of noticeable noise and vibration?

Pass

Comment:

Total exhaust flow balanced within +/-5% and grilles are within +/-10%?

Pass

Comment:



09-22-25 WAWA #6625 LYNCHBURG, VA

CheckList Information

Name : 05: CLOSEOUT CHECKS **Status :** Completed

Assigned Organization : National TAB **Asset :**

Requesting Organization : National TAB

Created Date : 08/27/2025 - Natasha Louw - National TAB

Completed Date : 09/23/2025 - Jearod Ferrette - National TAB

CheckList Item Details

SPACE COMFORT

Is space free of drafting? Pass

Comment:

Is space comfortable in all areas? Pass

Comment:

Is the space free of ventilation noise? Pass

Comment:

BUILDING PRESSURE

Do actual net building airflow, design net building airflow, and pressure coincide? If not why? (All three should either be positive or negative) Pass

Comment:

FRONT 0.008 REAR 0.0007 SIDE 0.004

Notes/Comments :

CEILING TILES MISSING BACK OF HOUSE.

National TAB

Project: 09-22-25 WAWA #6625 LYNCHBURG, VA

System/Unit: AHU/RTU



Asset: RTU1

AREA:FOOD SERVICE

Unit Data		
	Design	Actual
MFG	LENNOX	LENNOX
Serial Num	-	5625D05813
Model Num	LCT150H5E	LCT150H5E
Type	RTU	RTU
Configuration	VERTICAL	VERTICAL
Num OA Filters 1	-	2
OA Filter Size 1	-	14"X23.5"
Num Final Filter 1	-	4
Final Filter Size 1	-	20"X25"X2"

Motor Data		
	Design	Actual
Motor MFG	-	EBMPAPST
Frame	-	N/L
Horsepower	3.75	3.75
Motor Rpm	-	1780
Phase	3	3
Rated Voltage	208	208
Rated Amperage	-	8.0
Service Factor	-	N/L

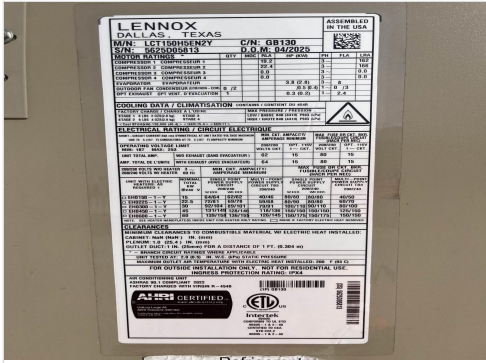
Drive Data	
	Actual
Motor Sheave Size	DD
Motor Bore Size	DD
Motor Sheave SetPt	DD
Fan Sheave Size	DD
Fan Sheave Bore	DD
Belt CL Distance	DD
Num of Belts	DD
Belt Size	DD

Test Data		
	Design	Actual
SF CFM	4500	4426
SF RPM	-	DD/80%
MOTOR RPM	-	DD/80%
RA CFM	3800	3704
OA CFM	700	722
RL Voltage	-	215.5/ 214.3/216.3
RL Amperage	-	3.6/ 3.6/ 3.7
SF System SetPt	-	80%
RA Damper Position	-	75%
RA Damper Type	-	ECON
OA Damper Position	-	25%
OA Damper Type	-	ECON

Performance Data		
	Design	Actual
MA Plenum SP	-	-0.45"
Fan Suction SP	-	-1.02"
Fan Discharge SP	-	0.46"
Total ESP	0.70"	0.91"
Fan Total SP	-	1.48"

Completed By: Jearod Ferrette on 09/23/2025

Unit Data - PHOTO LOG



09/22/2025



09/22/2025



09/22/2025

National TAB

Project:09-22-25 WAWA #6625 LYNCHBURG, VA

AHU/RTU



Diffuser Supply (GRD)

RTU1/FOOD SERVICE

Asset									
Asset Name	Location	Type	Size	DESIGN CFM	AK	CFM(1)	CFM(2)	FINAL CFM	% to design
SGRD1	FOOD SERVICE	SD-6	10"	425	1	561	449	449	105.6
SGRD2	FOOD SERVICE	SD-6	10"	425	1	590	472	432	101.6
SGRD3	FOOD SERVICE	SD-6	10"	425	1	615	492	445	104.7
SGRD4	FOOD SERVICE	SD-6	10"	425	1	585	468	412	96.9
SGRD5	FOOD SERVICE	SD-6	10"	425	1	566	453	413	97.2
SGRD6	FOOD SERVICE	SD-6	10"	400	1	400	320	367	91.8
SGRD7	FOOD SERVICE	SD-6	10"	400	1	471	377	377	94.3
SGRD8	FOOD SERVICE	SD-6	10"	400	1	416	333	370	92.5
SGRD9	TRASH	SD-1	10"	300	1	388	310	310	103.3
SGRD10	COFFEE	SD-6	12"	500	1	636	509	509	101.8
SGRD11	ELECTRICAL	SD-1	10"	375	1	269	215	342	91.2
Total				4500		5497	4398	4426	98.36%

Diffuser Ret/Exh (GRD)

RTU1/FOOD SERVICE

Asset									
Asset Name	Location	Type	Size	DESIGN CFM	AK	CFM(1)	CFM(2)	FINAL CFM	% to design
EGRD1	FOOD SERVICE	RG-1	14"	870	1	1199	972	806	92.6
EGRD2	FOOD SERVICE FOOD SERVICE	RG-1	14"	865	1	1104	903	893	103.2
EGRD3	FOOD SERVICE	RG-1	14"	865	1	1327	1104	790	91.3
EGRD4	WASHROOM	RG-1	16X14	1200	1	179	146	806	67.2
Total				3800		3809	3125	3295	86.71%

Completed By: Jearod Ferrette on 09/23/2025

National TAB

Project: 09-22-25 WAWA #6625 LYNCHBURG, VA

System/Unit: AHU/RTU



Asset: RTU2

AREA:RETAIL

Unit Data		
	Design	Actual
MFG	LENNOX	LENNOX
Serial Num	-	5625C02882
Model Num	LCT102H5E	LCT102H5E
Type	RTU	RTU
Configuration	VERTICAL	VERTICAL
Num OA Filters 1	-	2
OA Filter Size 1	-	14"X23.5"
Num Final Filter 1	-	4
Final Filter Size 1	-	20"X25"X2"

Motor Data		
	Design	Actual
Motor MFG	-	EBMPAPST
Frame	-	N/L
Horsepower	3.75	3.75
Motor Rpm	-	1780
Phase	3	3
Rated Voltage	208	208
Rated Amperage	-	8.0
Service Factor	-	N/L

Drive Data	
	Actual
Motor Sheave Size	DD
Motor Bore Size	DD
Motor Sheave SetPt	DD
Fan Sheave Size	DD
Fan Sheave Bore	DD
Belt CL Distance	DD
Num of Belts	DD
Belt Size	DD

Test Data		
	Design	Actual
SF CFM	3400	3431
SF RPM	-	DD/74%
MOTOR RPM	-	DD74%
RA CFM	3020	3031
OA CFM	380	400
RL Voltage	-	213.7/ 212.4/ 214.1
RL Amperage	-	3.4/ 3.3/3.4
SF System SetPt	-	74%
RA Damper Position	-	75%
RA Damper Type	-	ECON
OA Damper Position	-	25%
OA Damper Type	-	ECON

Performance Data		
	Design	Actual
MA Plenum SP	-	-0.24
Fan Suction SP	-	-0.79"
Fan Discharge SP	-	0.50"
Total ESP	1.00"	0.74"
Fan Total SP	-	1.29"

Completed By: Jearod Ferrette on 09/23/2025

Notes:
SGRD2-4 ON DRAWINGS NOT INSTALLED ON DUCTWORK

Written By: Jearod Ferrette on 09/23/2025

National TAB

Project:09-22-25 WAWA #6625 LYNCHBURG, VA

AHU/RTU



Diffuser Supply (GRD)

RTU2/RETAIL

Asset									
Asset Name	Location	Type	Size	DESIGN CFM	AK	CFM(1)	CFM(2)	FINAL CFM	% to design
SGRD1	RETAIL	SD-2	19X3.25	275	0.43	427	302	302	109.8
SGRD2	RETAIL	SD-2	19X3.25	275	0.43	54	300	300	109.1
SGRD3	RETAIL	SD-2	19X3.25	300	0.43	430	319	319	106.3
SGRD4	RETAIL	SD-2	19X3.25	275	0.43	0	0	0	0.0
SGRD5	RETAIL	SD-2	19X3.25	275	0.43	236	299	299	108.7
SGRD6	RETAIL	SD-2	19X3.25	275	0.43	95	295	295	107.3
SGRD7	RETAIL	SD-2	19X3.25	275	0.43	170	283	283	102.9
SGRD8	RETAIL	SD-2	19X3.25	275	0.43	294	294	294	106.9
SGRD9	RETAIL	SD-2	19X3.25	275	0.43	350	301	301	109.5
SGRD10	HALLWAY	SD-1	8"	200	1	344	207	207	103.5
SGRD11	WOMENS RR	SD-5	8"	100	1	249	275	275	275.0
SGRD12	REAR VESTIBULE	SD-5	8"	200	1	308	195	195	97.5
SGRD13	MENS RR	SD-5	8"	150	1	278	135	135	90.0
SGRD14	DELIVERY ROOM	SD-1	8"	250	1	204	226	226	90.4
Total				3400		3439	3431	3431	100.91%

National TAB

Project: 09-22-25 WAWA #6625 LYNCHBURG, VA

System/Unit: AHU/RTU



Asset: RTU3

AREA:OFFICE

Unit Data		
	Design	Actual
MFG	LENNOX	LENNOX
Serial Num	-	5625H03285
Model Num	LCT072H5E	LCT072H5E
Type	RTU	RTU
Configuration	VERTICAL	VERTICAL
Num OA Filters 1	-	1
OA Filter Size 1	-	28.25"X14
Num Final Filter 1	-	4
Final Filter Size 1	-	20"X20"X2"

Motor Data		
	Design	Actual
Motor MFG	-	EBMPAPST
Frame	-	N/L
Horsepower	1.5	1.5
Motor Rpm	-	3300
Phase	3	3
Rated Voltage	208	208
Rated Amperage	-	4.4
Service Factor	-	N/L

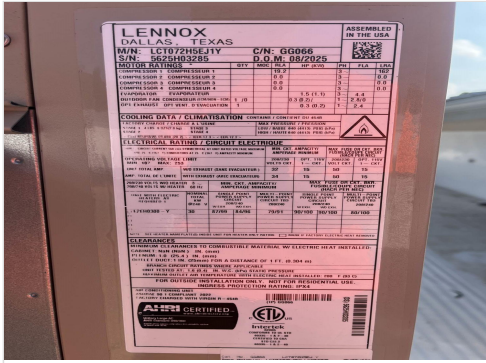
Drive Data	
	Actual
Motor Sheave Size	DD
Motor Bore Size	DD
Motor Sheave SetPt	DD
Fan Sheave Size	DD
Fan Sheave Bore	DD
Belt CL Distance	DD
Num of Belts	DD
Belt Size	DD

Test Data		
	Design	Actual
SF CFM	2400	2298
SF RPM	-	DD/85%
MOTOR RPM	-	DD/85%
RA CFM	2200	2090
OA CFM	200	208
RL Voltage	-	214.7/213.8/215.1
RL Amperage	-	3.0/2.9/2.9
SF System SetPt	-	85%
RA Damper Position	-	76%
RA Damper Type	-	ECON
OA Damper Position	-	24%
OA Damper Type	-	ECON

Performance Data		
	Design	Actual
MA Plenum SP	-	-0.60"
Fan Suction SP	-	-0.78"
Fan Discharge SP	-	0.48"
Total ESP	0.50"	1.08"
Fan Total SP	-	1.26"

Completed By: Jearod Ferrette on 09/23/2025

Unit Data - PHOTO LOG



09/22/2025



09/22/2025



09/22/2025

National TAB

Project:09-22-25 WAWA #6625 LYNCHBURG, VA

AHU/RTU



Diffuser Supply (GRD)

RTU3/OFFICE

Asset									
Asset Name	Location	Type	Size	DESIGN CFM	AK	CFM(1)	CFM(2)	FINAL CFM	% to design
SGRD1	ENTRANCE	SD-5	8"	250	1	308	320	308	123.2
SGRD2	FOH	SD-2	19X3.25	450	0.43	308	320	408	90.7
SGRD3	FOH	SD-2	19X3.25	450	0.43	375	390	475	105.6
SGRD4	FOH	SD-2	19X3.25	450	0.43	525	546	525	116.7
SGRD5	FOH	SD-2	19X3.25	450	0.43	122	126	222	49.3
SGRD6	ASSOCIATES AREA	SD-1	8"	200	1	263	273	209	104.5
SGRD7	OFFICE	SD-1	8"	150	1	294	305	151	100.7
Total				2400		2195	2280	2298	95.75%

Completed By: Jearod Ferrette on 09/23/2025

National TAB

Project: 09-22-25 WAWA #6625 LYNCHBURG, VA

System/Unit: FAN - Exhaust



Asset: EF1

AREA:RESTROOMS

Unit Data		
	Design	Actual
MFG	GREENHECK	GREENHECK
Model Num	GB-098-6	GB-098-6
Serial Num	-	26477653
Type	DOWNBLAST	DOWNBLAST
Configuration	VERTICAL	VERTICAL

Motor Data		
	Design	Actual
Motor MFG	-	Vari-green
Frame	-	NA
Horsepower	0.167	0.167
Motor Rpm	-	1750
Phase	1	1
Voltage (rated)	120	120
Amperage (rated)	-	2.2
Service Factor	-	1

Test Data		
	Design	Actual
CFM	375	369
Fan RPM	-	DD
Fan Rotation	-	CW
Motor RPM	-	DD
System SetPt	-	6 ON DIAL
RL Voltage	-	N/A
RL Amperage	-	N.A
Total ESP	0.38"	0.18"
Fan Inlet SP	-	-0.18"
Fan Discharge SP	-	ATM

Completed By: John Barresi on 09/23/2025

Unit Data - PHOTO LOG



09/22/2025

National TAB

Project:09-22-25 WAWA #6625 LYNCHBURG, VA

FAN - Exhaust



Diffuser Ret/Exh (GRD)

EF1/RESTROOMS

Asset									
Asset Name	Location	Type	Size	DESIGN CFM	AK	CFM(1)	CFM(2)	FINAL CFM	% to design
EGRD1	WOMENS RR	EG-1	8X8	150	1	205	189	158	105.3
EGRD2	MENS RR	EG-1	8X8	225	1	221	211	211	93.8
Total				375		426	400	369	98.4%

National TAB

Project: 09-22-25 WAWA #6625 LYNCHBURG, VA

System/Unit: FAN - Exhaust



Asset: EF2

AREA:FOOD SERVICE

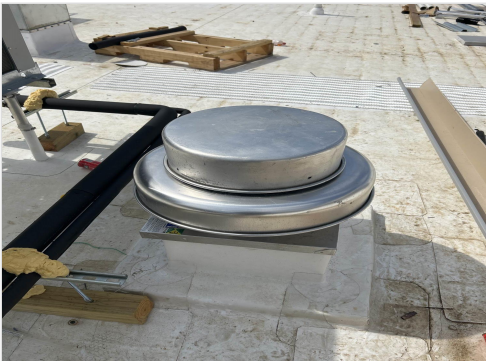
Unit Data		
	Design	Actual
MFG	GREENHECK	GREENHECK
Model Num	GB-098-6	GB-098-6
Serial Num	-	26477654
Type	DOWNBLAST	DOWNBLAST
Configuration	VERTICAL	VERTICAL

Motor Data		
	Design	Actual
Motor MFG	-	Vari-green
Frame	-	NA
Horsepower	0.167	0.167
Motor Rpm	-	1750
Phase	1	1
Voltage (rated)	120	120
Amperage (rated)	-	2.2
Service Factor	-	1

Test Data		
	Design	Actual
CFM	400	421
Fan RPM	-	DD
Fan Rotation	-	CW
Motor RPM	-	DD
System SetPt	-	6 ON DAIL
RL Voltage	-	119
RL Amperage	-	NA
Total ESP	0.38"	0.23"
Fan Inlet SP	-	-0.23"
Fan Discharge SP	-	ATMO

Completed By: Jearod Ferrette on 09/23/2025

Unit Data - PHOTO LOG



09/22/2025

National TAB

Project:09-22-25 WAWA #6625 LYNCHBURG, VA

FAN - Exhaust



Diffuser Ret/Exh (GRD)

EF2/FOOD SERVICE

Asset									
Asset Name	Location	Type	Size	DESIGN CFM	AK	CFM(1)	CFM(2)	FINAL CFM	% to design
EGRD1	FOOD SERVICE	RG-2	8X8	200	1	288	215	215	107.5
EGRD2	FOOD SERVICE	RG-2	8X8	200	1	303	206	206	103.0
Total				400		591	421	421	105.25%

National TAB

Project: 09-22-25 WAWA #6625 LYNCHBURG, VA

System/Unit: FAN - Exhaust



Asset: EF3

AREA:TRASH

Unit Data		
	Design	Actual
MFG	GREENHECK	GREENHECK
Model Num	SP-B200	SP-B200
Serial Num	-	N/L
Type	CEILING	CEILING
Configuration	VERTICAL	VERTICAL

Motor Data		
	Design	Actual
Motor MFG	-	GREENHECK
Frame	-	N/L
Horsepower	0.167	0.167
Motor Rpm	-	1000
Phase	1	1
Voltage (rated)	120	115
Amperage (rated)	-	2.7
Service Factor	-	N/L

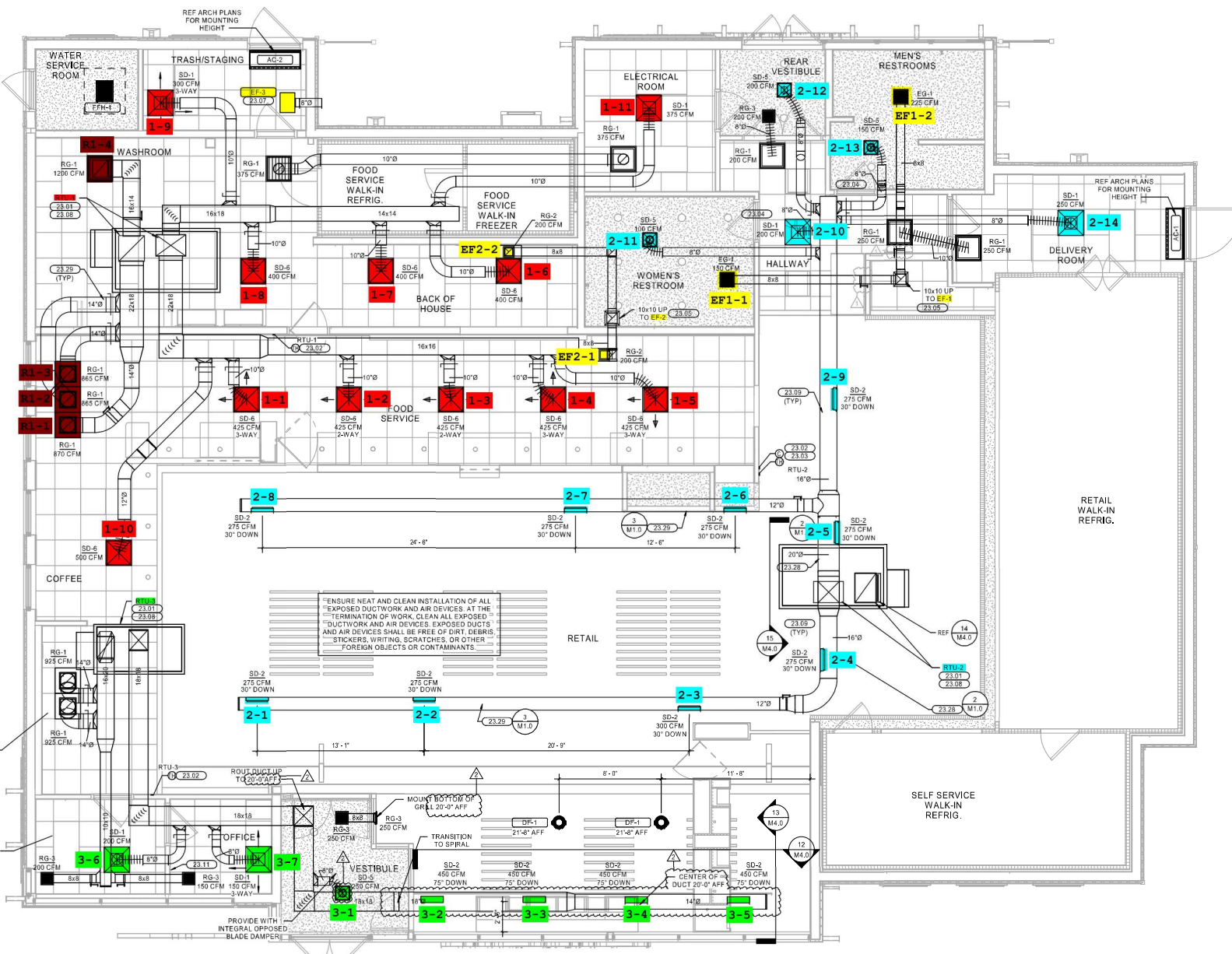
Test Data		
	Design	Actual
CFM	200	204
Fan RPM	-	DD
Fan Rotation	-	CCW
Motor RPM	-	DD
System SetPt	-	HIGH
RL Voltage	-	121
RL Amperage	-	2.05
Total ESP	0.50"	N/R
Fan Inlet SP	-	N/R
Fan Discharge SP	-	ATMO

Completed By: Jearod Ferrette on 09/23/2025

Unit Data - PHOTO LOG



09/23/2025



ENSURE NEAT AND CLEAN INSTALLATION OF ALL EXPOSED DUCTWORK AND AIR DEVICES. AT THE TERMINATION OF WORK, CLEAN ALL EXPOSED DUCTWORK AND AIR DEVICES. EXPOSED DUCTS AND AIR DEVICES SHALL BE FREE OF DIRT, DEBRIS, STICKERS, WRITING, SCRATCHES, OR OTHER FOREIGN OBJECTS OR CONTAMINANTS.