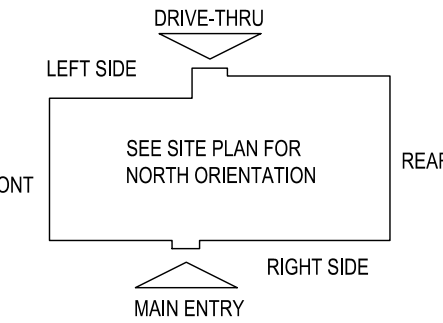


**E5 HVAC PLAN**  
SCALE: 1/4" = 1'-0"



**NOTE:** ALL DUCTWORK TO BE LOCATED IN TRUSS SPACE WHERE POSSIBLE. SEE FRAMING PLAN.

HVAC SETPOINTS RECOMMENDED BY CORPORATE OPERATIONAL GUIDELINES:  
 1. DINING: HEATING 70 DEGF. COOLING 72 DEGF.  
 2. KITCHEN: HEATING 68 DEGF. COOLING 74 DEGF

SUPPLY DUCTWORK SIZING TABLE*				
SIZE	ROUND		RECTANGULAR	
	CFM RANGE	SIZE	CFM RANGE	SIZE
8"	115 - 235	8"x8"	205 - 300	
10"	240 - 435	10"x8"	305 - 400	
12"	440 - 710	10"x10"	405 - 550	
14"	715 - 1,070	12"x10"	555 - 700	
16"	1,075 - 1,530	12"x12"	705 - 900	
18"	1,535 - 2,090	14"x12"	905 - 1,105	
20"	2,095 - 2,760	16"x12"	1,110 - 1,315	
22"	2,765 - 3,550	18"x12"	1,320 - 1,520	
24"	3,555 - 4,470	20"x12"	1,525 - 1,740	
*CONTRACTOR MAY SUBSTITUTE RECTANGULAR FOR ROUND DUCTWORK ON MAIN RUNS AT THEIR DISCRETION. BRANCHES TO DIFFUSERS TO REMAIN ROUND.				
		22"x12"	1,745 - 1,950	
		24"x12"	1,955 - 2,170	
		26"x12"	2,175 - 2,400	
		28"x12"	2,405 - 2,610	
		30"x12"	2,615 - 2,840	
		32"x12"	2,845 - 3,070	
		34"x12"	3,075 - 3,290	
		36"x12"	3,295 - 3,520	
		36"x14"	3,525 - 4,420	

DIFFUSER, REGISTER, AND GRILLE SCHEDULE									
TAG	SERVICE	TYPE	MATERIAL	THROW	FACE	NECK	MOUNTING	MANUFACTURER/MODEL	Notes
SD-1	SUPPLY	LOUVERED	STEEL	4-WAY	24X24	SEE PLAN	LAY-IN	CARNES SFP24	2, 4
SD-2 - NOT USED									
SD-3	SUPPLY	LOUVERED	STEEL	3-WAY	SEE PLAN	SEE PLAN	SURFACE	CARNES SKSA	2, 4
SD-4	SUPPLY	LOUVERED	STEEL	4-WAY	12X12	SEE PLAN	SURFACE	CARNES SKSA	1, 2, 4
SD-5	SUPPLY	PERFORATED	STEEL	PERFORATED	24X24	SEE PLAN	LAY-IN	CARNES SPRB24	2, 4
RG-1	RETURN	SQUARE EGGRATE	ALUMINUM	N/A	24X24	22X22	LAY-IN	CARNES RAPMF	2, 3, 4
EG-1	RETURN	LOUVERED GRILLE	STEEL	N/A	12X12	SEE PLAN	SURFACE	CARNES RTLAH	1, 2, 4
TG-1	TRANSFER	LOUVERED GRILLE	STEEL	N/A	SEE PLAN	SEE PLAN	SURFACE	CARNES RTLAH	2, 4
<b>DIFFUSER NOTES:</b>									
1. PROVIDE w/ ADJUSTABLE OPPOSED BLADE DAMPER									
2. VERIFY ALL DIFFUSERS AND RETURN GRILLE COLORS WITH OWNER AND ARCHITECT									
3. PROVIDE w/ 22X22 PLENUM BOX.									
4. ALL DIFFUSERS AND RETURNS LOCATED IN BLACK CEILING SHALL BE FLAT BLACK FINISH.									

© 2024

**NEW CULVER'S RESTAURANT**  
**200 S COUNTY ROAD 200 E**  
 Danville, IN 46122  
 County of HENDRICKS

*Culver's*  
 Culver Franchising System, Inc.  
 1240 Water Street  
 Prairie du Sac, WI 53578  
 608-543-7880

OWNER:  
 TFC3 LLC  
 22 Prairie Lane  
 Orland Park, IL 60467  
 Sam Flost  
 708-822-7432

OLLMANN ASSOCIATES ARCHITECTS, P.C.  
 200 South State Street  
 Belvidere, Illinois 61008  
 815-544-7190 Phone  
 © OAA. All rights reserved. Any copying, transmission or disclosure subject to OAA written approval.

FOR CONSTRUCTION

HVAC PLAN, DIFFUSER SCHEDULE

Date: 11-22-2023  
 Revision: 03-01-2024

2023-116  
**M101**

# GENERAL NOTES

- DEVIATIONS FROM THE HVAC PLANS ARE THE RESPONSIBILITY OF THE HVAC CONTRACTOR & WILL NOT RESULT IN ADDITIONAL COSTS TO THE OWNER UNLESS WRITTEN CHANGE ORDERS ARE APPROVED BY THE OWNER.
- ALL WORK TO BE PERFORMED TO STATE CODE & SMACNA GUIDELINES.
- INSTALL UNITS ACCORDING TO MANUFACTURERS GUIDELINES.
- PROVIDE OWNER W/ OPERATION & MAINTENANCE MANUALS & SYSTEM SCHEMATICS.
- CONTRACTOR TO CONFIRM VOLTAGES & PHASES OF EQUIPMENT PRIOR TO INSTALLATION.
- VERIFY ALL EXISTING CONDITIONS PRIOR TO INSTALLATION (DRAWINGS ARE DIAGRAMMATIC IN NATURE & DO NOT REFLECT EXACT LOCATIONS OF EQUIPMENT OR OTHER APPARATUSSES.)
- PROVIDE SHOP DRAWINGS TO THE ARCHITECT/DESIGNER FOR EQUIPMENT, FANS, REGISTERS, ETC. PRIOR TO PROCUREMENT.
- PROVIDE OWNER W/ COLOR CHOICES FOR SWITCHES & OTHER APPARATUSSES WHERE APPLICABLE.
- VENT OWNER WATER HEATER AS REQUIRED.
- VENT DRYER THRU SIDEWALL TO EXTERIOR AS REQUIRED. MAINTAIN CLEARANCE FROM INTAKES AS NOTED.
- HANG & SUPPORT MATERIALS SHALL BE INSTALLED THE LATEST EDITION OF THE ASHRAE HANDBOOK OF FUNDAMENTALS.
- MAINTAIN AT LEAST 10 FEET CLEARANCE FROM INTAKES OR WINDOWS ON ALL EXHAUST VENTS.
- TEST, ADJUST, & CALIBRATE CONTROL SYSTEMS AS REQUIRED. PROVIDE SCHEMATICS / DESCRIPTION TO THE OWNER PRIOR TO INSTALLATION.
- INSTALLER RESPONSIBLE FOR FINAL TEST & BALANCING DURING TRAINING WEEK. PROVIDE WRITTEN REPORT BY THIRD PARTY INDEPENDENT TAB CONTRACTOR.
- VERIFY W/ OWNER EXACT HEATER LOCATION TO AVOID BUILDING FUNCTION INTERFERENCE.
- REPLACE ALL AIR FILTERS PRIOR TO TURNING SYSTEM OPERATIONS OVER TO OWNER.
- HVAC CONTRACTOR IS RESPONSIBLE FOR A COMPLETE & FULLY WORKING SYSTEM.
- DUCT DIMENSIONS LISTED ARE NET FREE - CLEAR INSIDE DIMENSIONS.
- VERIFY DUCT LOCATIONS PRIOR TO FABRICATION. (VERIFY LIMITED AREA FOR DUCTWORK & OTHER APPARATUSSES.)
- INSULATE DUCT WORK TO SMACNA GUIDELINES & STATE CODES.
- INSTALL VOLUME CONTROL DAMPERS AS INDICATED ON PLANS.
- FLEXIBLE ROUND DUCT WORK NOT TO EXCEED 8 FEET IN LENGTH. AVOID UNNECESSARY TURNS & SLACK.
- RETURN AIR DUCT WORK TO BE LINED FOR SOUND ATTENUATION.
- DUCT WORK TO BE STANDARD GAUGE SHEET METAL (FIBROUS DUCT NOT ALLOWED.)
- INSULATE EXHAUST DUCT FOR EXHAUST FAN TO EXTERIOR TERMINATION.
- COORDINATE WORK W/ GENERAL CONTRACTOR & OWNER TO MAXIMIZE CEILING HEIGHT & AVOID CONFLICTS.
- S/S WALL PANELS FOR THE KITCHEN AREA ARE TO BE FURNISHED AND INSTALLED BY THE HVAC CONTRACTOR. PANELS ARE TO BE 18 GA. TYPE 304 S/S. SEE DETAILS AND LOCATIONS ON THE A103 DRAWING.
- EXHAUST FANS AND FURNACE FANS TO RUN CONTINUOUSLY DURING OCCUPIED MODE.
- NIGHT SET BACK THERMOSTATS TO BE INSTALLED ON ALL HVAC EQUIPMENT.

## NATIONAL ACCOUNT PROGRAM

- LENNOX INDUSTRIES, INC.** - ROOFTOP HVAC EQUIPMENT  
NATIONAL ACCOUNTS SALES: (800) 367-6285 Option #1 lennoxind.com  
NATIONAL ACCOUNT TECHNICAL SUPPORT: (800) 367-6285 Option #2 lennoxind.com
- ACCUREX/ GREENHECK FAN CORPORATION** - KITCHEN HOODS, EXHAUST FANS, ROOF CURBS, ANSUL SYSTEMS, ACCESSORIES AND TEST AND BALANCE  
CONTACT PHILLIP KRAFT: 1-262-227-7865 philip.kraft@accurex.com  
SECONDARY CONTACT BRAD BORCHARDT: 1-715-551-0809 brad.borchardt@accurex.com  
SECONDARY CONTACT ANDY JACOBS: andy.jacobs@accurex.com  
ACCUREX WILL PROVIDE BALANCED AIRFLOW AND FUNCTIONAL CHARACTERISTICS OF THE HVAC AS THEY RELATE TO AIRFLOW AND RESISTANCE ONLY. SERVICES TO BE PERFORMED BY A CERTIFIED NEBB FIRM AND ITS MANAGING GROUP - NATIONAL TAB
- CARNES COMPANY** - DIFFUSERS AND GRILLES  
NATIONAL ACCOUNTS SALES: CHRIS STRATTON - (608) 845-6411 cstratton@carnes.com  
NATIONAL ACCOUNTS REP: BRIAN BAKER - (608) 845-6411 bbaker@carnes.com

## 2023-116 CULVER'S OF DANVILLE, IN DANVILLE, IN

### RTU SCHEDULES

UNIT No	AREA SERVED	SUPPLY FAN					COOLING						HEATING				ELECTRICAL (1)		MANUFACTURER, MODEL		
		SUPPLY FAN TYPE	SA FAN VFD	SUPPLY CFM	MIN OA CFM	ESP	OA TEMP		MIXED AIR TEMP		SUPPLY COIL TEMP		COIL CAPACITY		GAS OR ELEC	OUTPUT MBH	OAT °FDB	HEATING STAGES		VOLTAGE	PHASE
							°FDB	°FWB	°FDB	°FWB	°FDB	°FWB	SENSIBLE MBH	LATENT MBH							
RTU-1	DINING ROOM	MSAV	YES	6,150	1,750	0.75"	91	76	79.55	67.09	55.00	54.68	161	71	GAS	230	-15	2	208	3	LENNOX, ENLIGHT LGT
RTU-2	KITCHEN	MSAV	YES	6,150	1,700	0.75"	89	76	78.87	66.98	55.00	54.79	157	71	GAS	179	-15	2	208	3	LENNOX, ENLIGHT LGT

#### ADDITIONAL FACTORY INSTALLED OPTIONS FOR BOTH UNITS:

- WEATHERPROOF DISCONNECT
- FACTORY INSTALLED/FIELD POWERED GFCI
- RETURN SMOKE DETECTOR
- DRAIN PAN OVERFLOW SWITCH
- SINGLE ENTHALPY ECONOMIZER W/ FAULT DETECTION DIAGNOSTICS
- BAROMETRIC RELIEF
- HAIL GUARDS
- 2" MERV 13 FILTERS
- SS HEAT EXCHANGER
- HOT GAS REHEAT

#### ADDITIONAL FIELD INSTALLED OPTIONS FOR BOTH UNITS:

- 14" DOWNFLOW HYBRID CURB
- PVC DRAIN TRAP KIT
- REMOTE TEMPERATURE AND HUMIDITY SENSORS
- LENNOX MODEL CS7500 PROGRAMMABLE THERMOSTAT
- OUTDOOR AIR CFM CONTROL

#### NOTES:

- NOTIFY ELECTRICAL CONTRACTOR OF BREAKER REQUIREMENTS AFTER SELECTION

- PRV-1 RESTROOM EXHAUST FAN - REFER TO SHEET M204
- PRV-2 GRIDDLE EXHAUST FAN - REFER TO SHEET M202
- PRV-3 FRYER EXHAUST FAN - REFER TO SHEET M203
- EF-1A MOP ROOM EXHAUST FAN - REFER TO SHEET M204
- ITEM #49A GRIDDLE HOOD - REFER TO SHEET M202
- ITEM #59A FRYER HOOD - REFER TO SHEET M203
- ECH-1 ELECTRIC CEILING HEATER Q-MARK OR EQUAL CDF-548 ELECTRIC CEILING HEATER & CDF RECESSED MOUNTING FRAME, CDF-TM4 TRANSFORMER & WALL MOUNTED THERMOSTAT, 208/240 VOLT SINGLE PHASE = 19.2 AMPS (SUPPLIED AND INSTALLED BY ELECTRICAL CONTRACTOR.)

## CONTROL NOTES

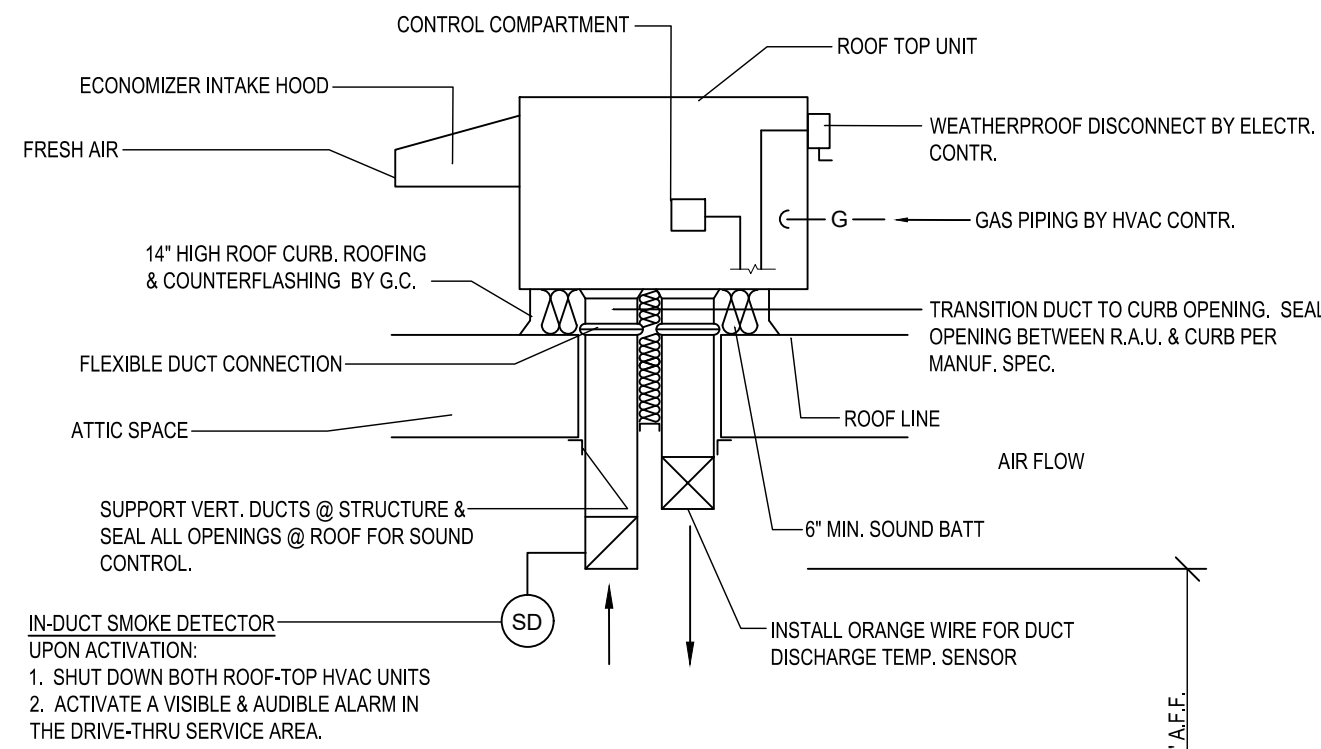
NOTE: KITCHEN HOODS SUPPLIED AND INSTALLED BY HVAC CONTRACTOR

- WIRE RTU-1, RTU-2 TO SHUT-DOWN & EXHAUST HOOD FANS TO CONTINUE TO RUN UPON ACTIVATION OF THE ANSUL SYSTEM.
- WIRE RTU-1 & RTU-2 TO SHUT-DOWN UPON ACTIVATION OF ANY IN-DUCT SMOKE DETECTOR.
- OCCUPIED MODE: FANS IN RTU-1 & RTU-2, EXHAUST FANS PRV-1, PRV-2, PRV-3 AND EF-1 TO RUN CONTINUOUSLY.
- UNOCCUPIED MODE: FANS IN RTU-1 & RTU-2 TO RUN ONLY WHEN COOLING OR HEATING IS CALLED FOR.

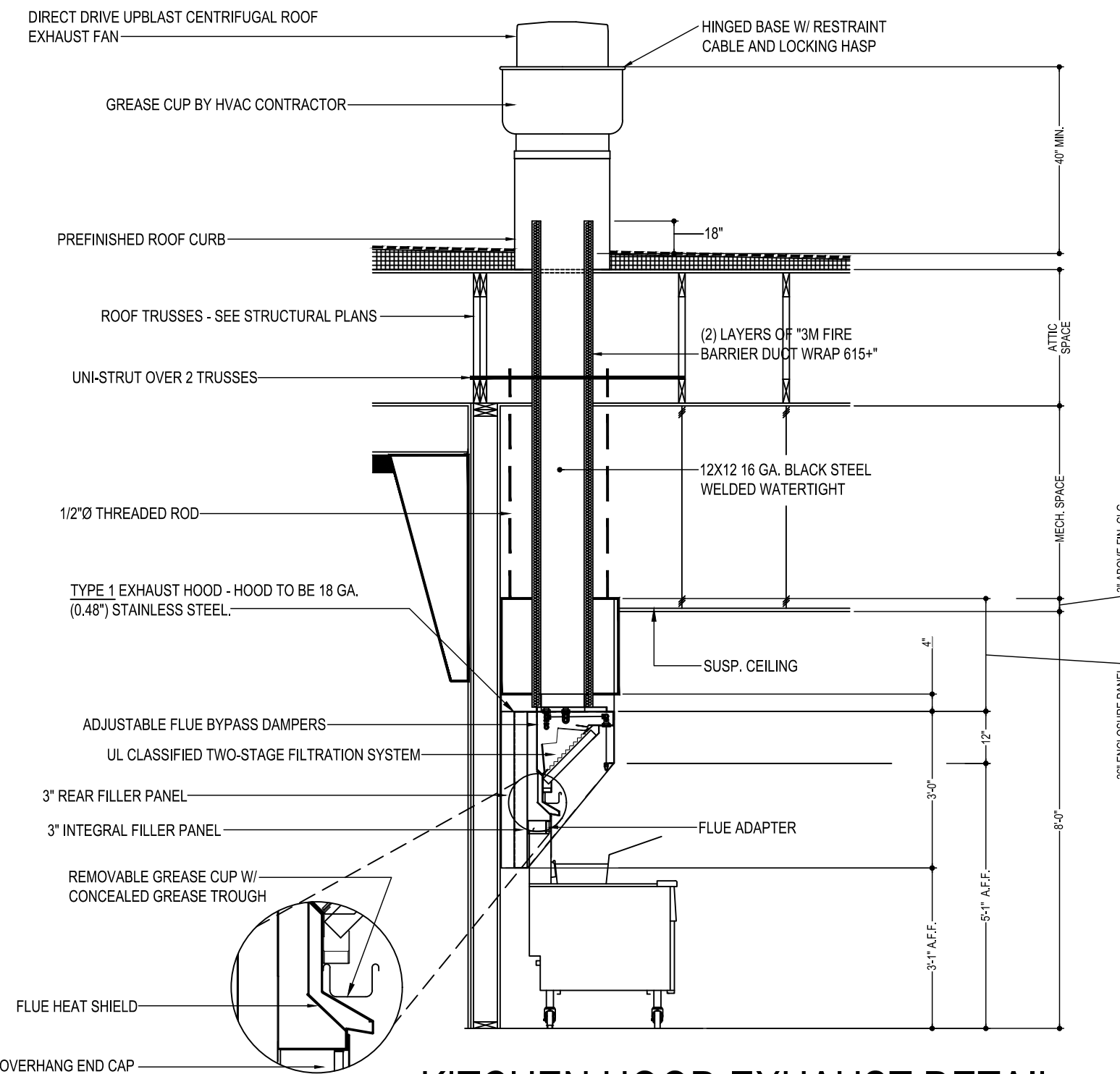
## TEST & BALANCE NOTES

- ACCUREX WILL PROVIDE BALANCED AIRFLOW & FUNCTIONAL CHARACTERISTICS OF THE HVAC SYSTEM AS THEY RELATE TO AIRFLOW & AIR PRESSURE ONLY. SERVICES TO BE PERFORMED BY A CERTIFIED NEBB FIRM & ITS MANAGING GROUP NATIONAL TAB.
- SERVICES NOT INCLUDED: PULLEY / SHEAVE CHANGES, MOTOR CHANGE OUTS, OR RETURN TRIPS DUE TO DELAYS CAUSED BY JOB INCOMPLETENESS.
- ESTABLISH MINIMUM OUTSIDE AIR FLOW INDICATED ON SCHEDULES AT ALL SUPPLY FAN SPEEDS.

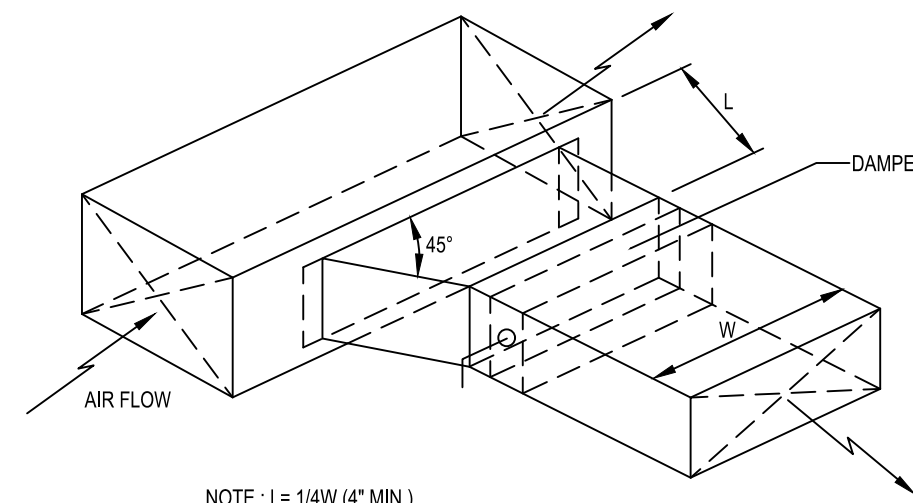
AIR BALANCE TABLE				
EXHAUST AIR FLOW				
EQUIPMENT TAG	SERVICE	CFM		
PRV-1	RESTROOMS	375		
PRV-2	ITEM #49	1,500		
PRV-3	ITEM #59	1,500		
EF-1A	MOP ROOM	75		
TOTAL =		3,450		
VENTILATION REQUIRED PER 2018 INTERNATIONAL MECHANICAL CODE				
EQUIPMENT TAG	SERVICE	CFM		
RTU-1	DINING ROOM	1,078		
RTU-2	KITCHEN	384		
TOTAL =		1,462		
3,450 > 1,462 -> USE 3,450 CFM FOR OUTSIDE AIR CFM				
OVERALL AIRFLOW SUMMARY				
EQUIPMENT TAG	SERVICE	SUPPLY CFM	RETURN CFM	OUTSIDE AIR CFM
RTU-1	DINING ROOM	6,150	4,400	1,750
RTU-2	KITCHEN	6,150	4,450	1,700
TOTAL OUTSIDE AIR CFM =		3,450		



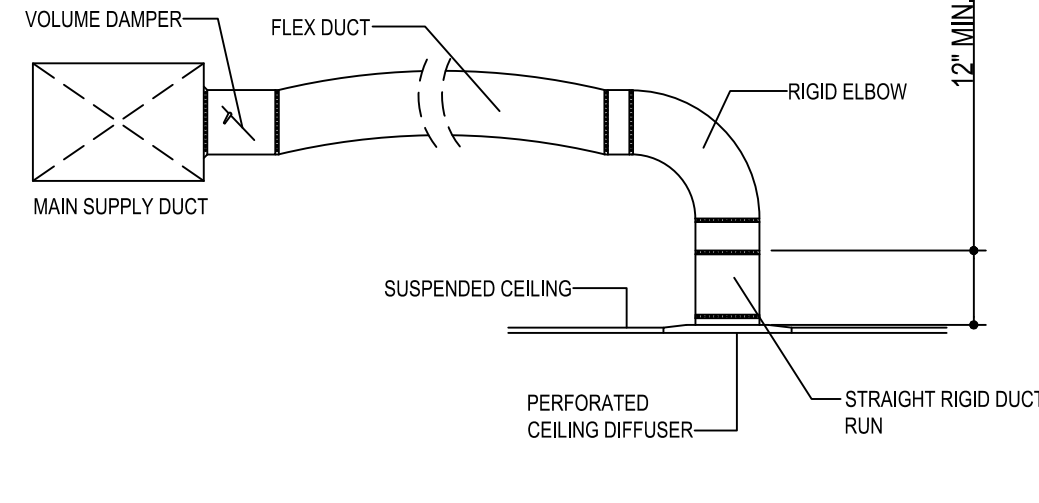
**A6 ROOFTOP HVAC UNIT**  
SCALE: N.T.S.



**C3 KITCHEN HOOD EXHAUST DETAIL**  
SCALE: N.T.S.  
VERIFY MOUNTING HEIGHTS W/ OWNER AND GENERAL CONTRACTOR



**C6 BRANCH DUCT TAKEOFF DETAILS**  
SCALE: N.T.S.



**E5 DUCT LINER INSTALLATION DETAIL**  
SCALE: N.T.S.  
NOTE: USE ONLY ON VERTICAL DROP FROM RTU TO WITHIN 9'-10\"/>

## LENNOX SETTINGS FOR CULVERS

IN ORDER TO SET UP THE RTU'S YOU WILL NEED TO DOWNLOAD LENNOX CORE SERVICE APP. AND PAIR YOUR DEVICE WITH THE CORE CONTROLLER. ONCE PAIRED YOU WILL SEE THE OPERATION OVERVIEW SCREEN. SEE INSTALLATION MANUAL FOR INSTRUCTIONS ON DOWNLOADING THE APP. OR SCAN THE QR CODE ON THE FRONT COVER OF THE CONTROLLER

### HEAT DELAY ADJUSTMENT

- HEAT DELAY WILL BE PRIS IN THE CORE CONTROLLER AND CHANGED IN THE APP AS SHOWN IN THE MENU PATH BELOW, DEFAULT IS SET AT 3600 SECONDS.
- TAP THE MENU BUTTON, (THREE LINES IN THE UPPER LEFT OF THE SCREEN) TO OPEN THE MENU.
  - SCROLL DOWN AND TAP ON RTU OPTIONS.
  - TAP EDIT PARAMETER. CHOOSE FROM THE CATEGORY OF PARAMETERS LISTED. (FOR HEAT DELAY CHOOSE HEATING)
  - CHOOSE THE PARAMETER TO ADJUST (65). SELECT "0" FOR NO HEAT DELAY (0 SECONDS)

### GLOBAL ECONOMIZER MODE (KITCHEN UNIT ONLY)

- THIS IS SET BY CHANGING CONFIGURATION ID#1 CHARACTER 2 TO G
- FROM THE MAIN SCREEN (OPERATION OVERVIEW) TAP THE MENU BUTTON (THREE LINES IN THE UPPER LEFT OF THE SCREEN) TO OPEN THE MENU
  - TAP INSTALL
  - TAP NEXT ON DATE AND TIME
  - TAP NEXT ON RTU NAME, MODEL NUMBER, SERIAL NUMBER AND CATEGORY IF ALREADY ENTERED, IF NOT PLEASE ENTER
  - TAP CONFIGURATION ID 1 AND CHANGE 2ND CHARACTER TO G

### ECONOMIZER MINIMUM POSITION SET-UP

- THIS IS ADJUSTED THROUGH THE MENU FROM THE MAIN SCREEN
- TAP THE MENU BUTTON (THREE LINES IN THE UPPER LEFT OF THE SCREEN)
  - SCROLL DOWN AND TAP RTU OPTIONS
  - TAP EDIT PARAMETERS
  - CHOOSE FROM THE CATEGORY OF PARAMETERS LISTED (AIRFLOW)
  - CHOOSE THE PARAMETER TO ADJUST (132) MINIMUM FRESH AIR DAMPER POSITION DURING OCCUPIED OPERATION

### OCCUPIED AND UNOCCUPIED

- USING 24V THERMOSTAT CONTROL, OCCUPIED/ UNOCCUPIED WILL BE DETERMINED BY INPUT ON P297-8 ON THE IM BOARD
- FOR (KITCHEN UNIT ONLY) BOTH THE THERMOSTAT AND HOOD FANS MUST BE TIED INTO P297-8 ON THE IM CONTROL BOARD

### FRESH AIR TEMPERING (HEATING)

- THIS IS ADJUSTED THROUGH THE MENU FROM THE MAIN SCREEN
- TAP THE MENU BUTTON (THREE LINES IN THE UPPER LEFT OF THE SCREEN) TO OPEN THE MENU
  - TAP SETUP
  - TAP TEST AND BALANCE
  - TAP DAMPER
  - THERE ARE SEVERAL SETTINGS TO SELECT IN THIS MENU PATH BEFORE REACHING THE DESIRED SETTING. FRESH AIR HEATING ENABLED =YES OR NO. AFTER ENABLING FAH THE NEXT SCREEN WILL ALLOW THE FAH SET POINT TO BE CONFIGURED. SUGGESTED FAH TEMPERATURE RANGES 65-87 DEGREES F. VERIFY WITH ENGINEER

### FRESH AIR TEMPERING (COOLING)

- THIS IS ADJUSTED THROUGH THE MENU FROM THE MAIN SCREEN
- TAP THE MENU BUTTON (THREE LINES IN THE UPPER LEFT OF THE SCREEN) TO OPEN THE MENU
  - TAP SETUP
  - TAP TEST AND BALANCE
  - TAP DAMPER
  - THERE ARE SEVERAL SETTINGS TO SELECT IN THIS MENU PATH BEFORE REACHING THE DESIRED SETTING. FRESH AIR HEATING ENABLED =YES OR NO. AFTER ENABLING FAH THE NEXT SCREEN WILL ALLOW THE FAH SET POINT TO BE CONFIGURED. SUGGESTED FAH TEMPERATURE RANGES 73-75 DEGREES F. VERIFY WITH ENGINEER

ENSURE THAT THE PROBE STYLE SENSOR GETS INSTALLED IN THE SUPPLY DUCTWORK FOR FAHFAC TO OPERATE PROPERLY.

FOR HELP PLEASE CALL LENNOX NATIONAL ACCOUNT TECH SUPPORT AT 1-800-367-6285

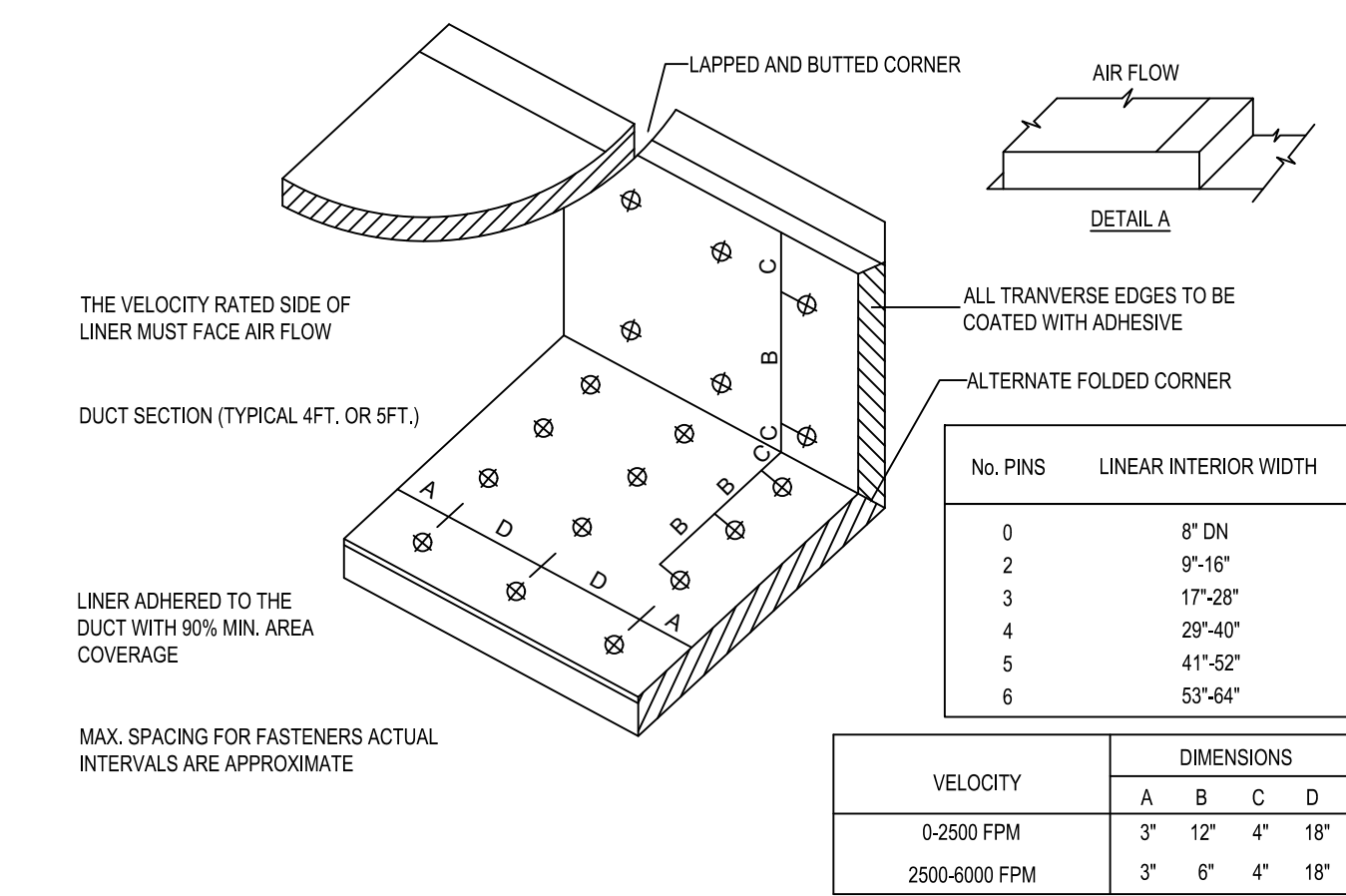
CHECK FOR CORRECT OPERATION AND WIRING OF ALL SENSORS

## COOKING APPLIANCE / TYPE 1 HOOD INTERLOCK

- REMOTE SWITCH ON - POWER TO KITCHEN FAN CONTROL CENTER (KFCO)
- KFCO CONTROLS:
  - EXHAUST FANS PRV-2 (GRILLE) & PRV-3 (FRYERS) ARE STARTED.
  - OPENS OUTSIDE AIR INTAKE ON RTU-1 & RTU-2 TO MINIMUM FRESH AIR OPENING.
  - POWER TO OUTLETS #51 (GRILLE) & #60 (FRYERS).
- GRILLE & FRYER CAN BE STARTED.
- IN CASE OF FIRE:
  - SHUNT TRIP BREAK FOR GRILLE & FRYERS OUTLET TRIPS.
  - ANSUL SYSTEM IS ACTIVATED.
  - THE MECHANICAL GAS VALVES CLOSES.
  - SHUT DOWN RTU-1 & RTU-2 & CLOSE OUTSIDE AIR.
  - EXHAUST FANS PRV-2 & PRV-3 CONTINUE TO RUN.

## GREASE HOOD FIRE SUPPRESSION SYSTEM

WET-CHEMICAL EXTINGUISHING SYSTEMS SHALL BE INSTALLED, MAINTAINED, PERIODICALLY INSPECTED AND TESTED IN ACCORDANCE WITH NFPA 17A AND THEIR LISTING.



**E5 DUCT LINER INSTALLATION DETAIL**  
SCALE: N.T.S.  
NOTE: USE ONLY ON VERTICAL DROP FROM RTU TO WITHIN 9'-10\"/>

HOOD INFORMATION																	
HOOD NO.	MARK	MODEL	HOOD DIMENSIONS (IN.)			HOOD CONSTR.	COOKING LOAD / DUTY RATING	EXHAUST					SUPPLY		TOTAL WEIGHT LBS.	SECTION LOCATION	
			LENGTH	WIDTH	HEIGHT			COLLAR(S)			CFM	S.P.	MUA CFM	AC CFM			
1	GRIDDLE HOOD	XGEP-64-S	64	TOP 23 BOT 8	FRT 12 BACK 36	430 SS W/HERE EXPOSED	MEDIUM	1500	12	12		1500	1.918			136.8	SINGLE

HOOD INFORMATION													
HOOD NO.	MARK	LIGHTING DETAILS			GREASE FILTRATION DETAILS			UTILITY CABINET(S)					
		FIXTURE TYPE	BULB / LAMP INFO	QTY	FOOT CANDLES	TYPE / MODEL MATERIAL	QTY	SIZE (IN.)	LOCATION	FIRE SYSTEM TYPE	SIZE	MODEL	CONTROLS INTERFACE
1	GRIDDLE HOOD					GREASE GRABBER	4	16					
						STAINLESS STEEL	0	20	16				

**HOOD OPTIONS**  
 UL 710 LISTED W/ OUT EXHAUST FIRE DAMPER - UL #R25625  
 BACK NON-INTEGRAL AIR SPACE - 3 IN WIDE  
 26 IN HIGH CEILING ENCLOSURES - FRONT LEFT RIGHT - FIELD INSTALLED  
 FACTORY MOUNTED EXHAUST COLLAR(S)  
 PERFORMANCE ENHANCING LIP (PEL) TECHNOLOGY  
 STANDING SEAM CONSTRUCTION FOR SUPERIOR STRENGTH

**SPECIAL DESIGN REQUESTS**  
 SDR #K1100145 - FLUE BYPASS HOOD  
 SDR #K1800144 - CULVERS 4VAT 2FIRE PROCESS - GRIDDLE HOOD

Direct Drive Upblast Centrifugal Roof Exhaust Fan													
MARK INFORMATION			FAN INFORMATION					MOTOR INFORMATION					
QTY	MARK	MODEL	VOLUME (CFM)	TOTAL EXTERNAL SP (IN WG)	FAN RPM	OPERATING POWER (HP)	WEIGHT (LB.)	SIZE (HP)	V/C/P	ENCLOSURE	MOTOR RPM	WINDINGS	NEC FLA*
1	PRV-2 Griddle Fan	XCUE-140-VG	1,500	1.801	1,725	0.83	92	1	115/60/1	OP	1725	1	16

\*NEC FLA - Based on table 430.250 or 430.248 of National Electrical Code 2020. Actual motor FLA may vary for sizing thermal overload, consult factory"

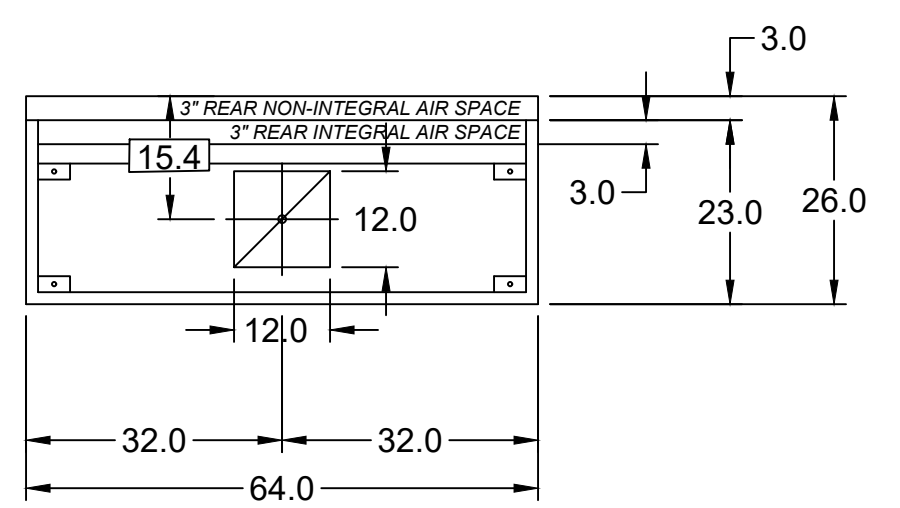
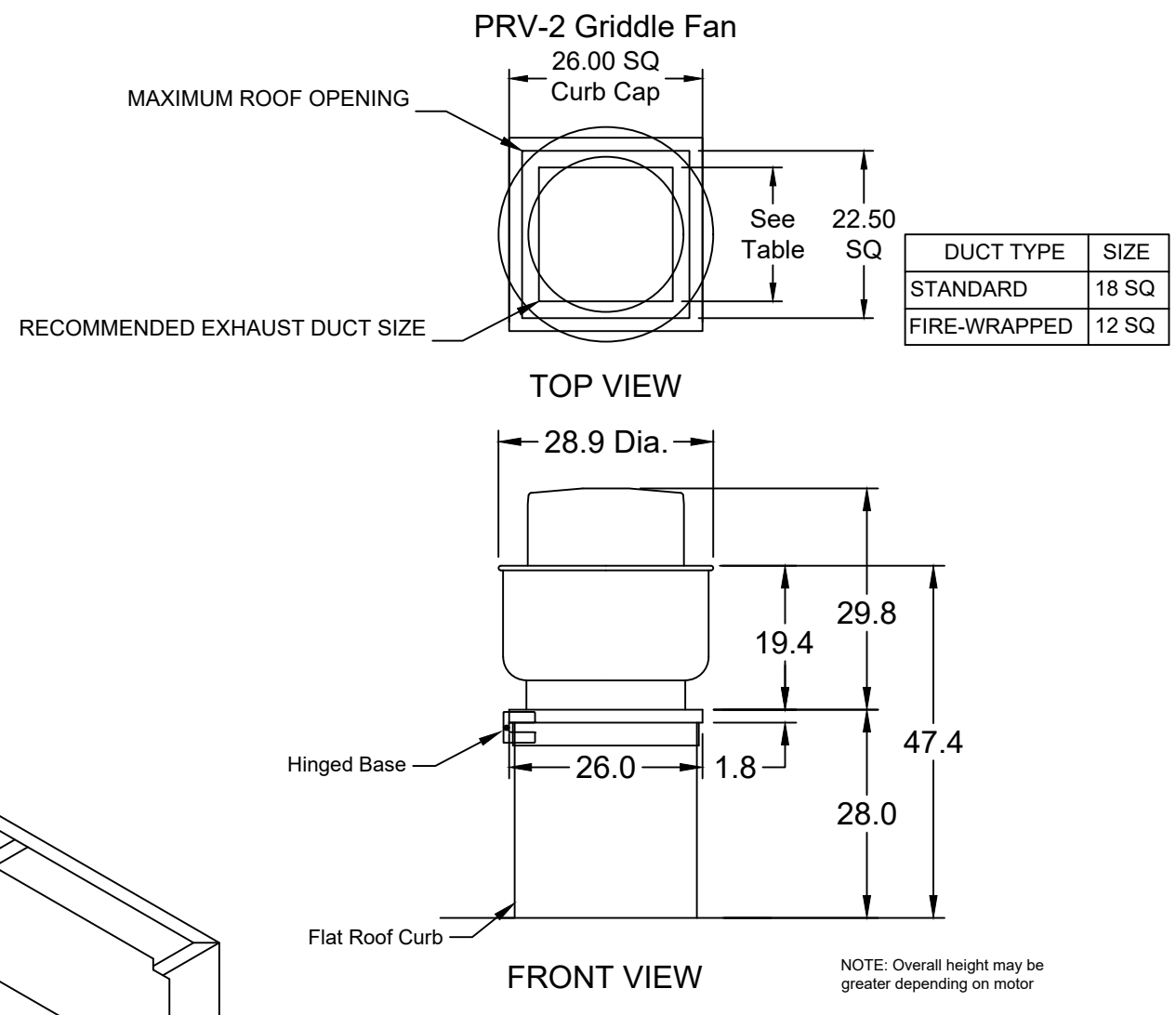
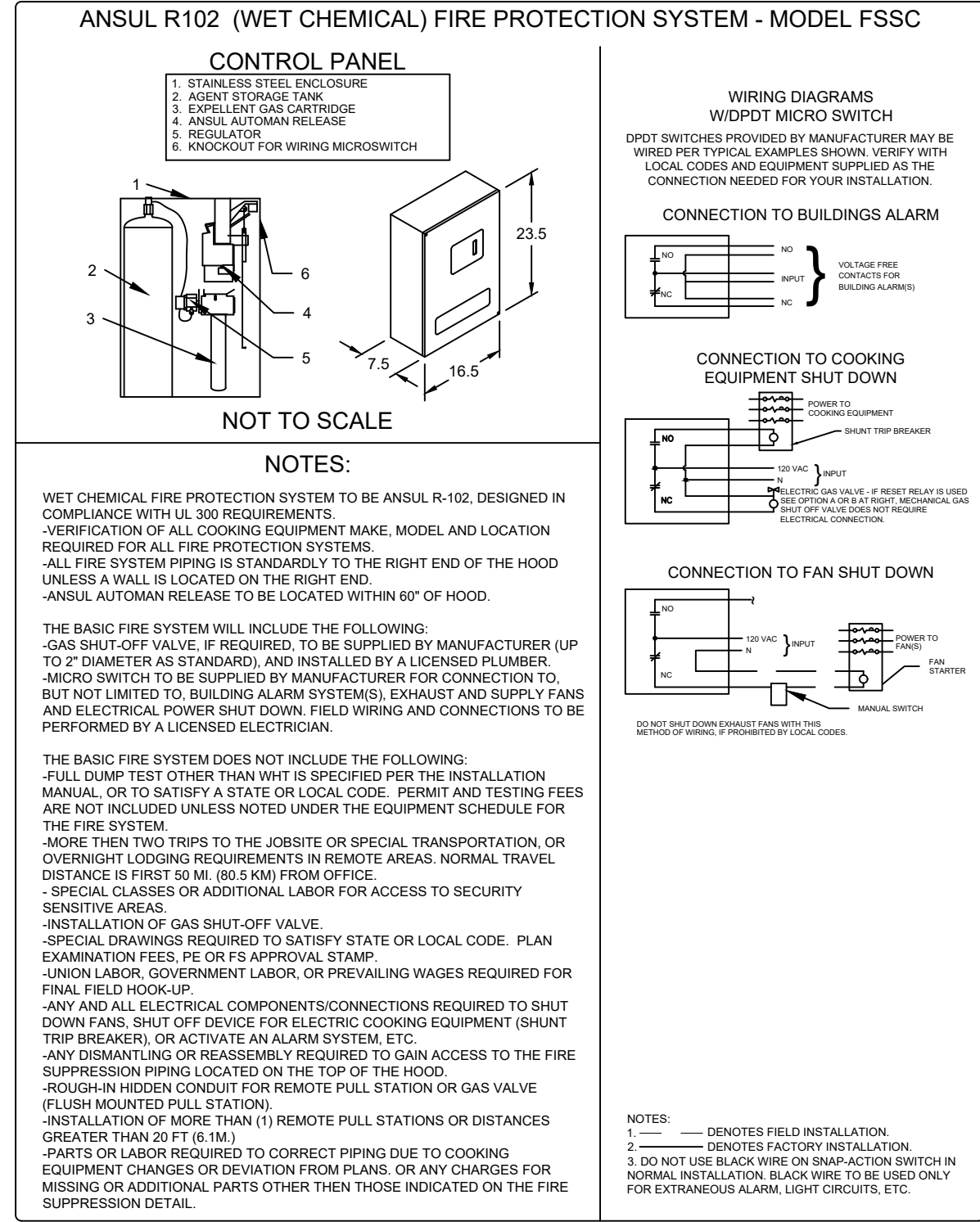
**PRV-2 Griddle Fan - SELECTED OPTIONS AND ACCESSORIES**

One piece fully welded windband  
 Tapered bushing wheel hub  
 Breather tube outlet area min. 4.4 sq. in. (sizes 99-480), 2.0 sq. in. (sizes 60-95)  
 Min. windband material thickness: 0.051" aluminum (060-240), 0.064" aluminum (240HP, 240XP), 0.080" aluminum (sizes 300-480)  
 Larger Curb Cap Size - 26 Square  
 UL/cUL 762 Listed - "Power Ventilators for Rest. Exh. Appliances"  
 Switch, NEMA-3R, Toggle, Shipped with Unit  
 Hinge, Factory Installed  
 High Temp Curb Seal Rated for Continuous Duty at 1500 F (Factory Attached)  
 Grease Trap (PN 475538)  
 Clean-out Port - Factory Installed

FIRE SYSTEM INFORMATION									
MARK	MODEL	LOCATION	FLOW POINTS		SUPPLY LINE	DETECTION	MARK(S) PROTECTED BY FIRE SYSTEM		
			HOODS	PCU			GRIDDLE HOOD SECTION 1		
FIRE SUPPRESSION-GRIDDLE HOOD	ANSUL R-102 WET CHEMICAL	REMOTE MOUNTED	6 UTILIZED	11 AVAILABLE	CONTINUOUS	FUSIBLE LINK			

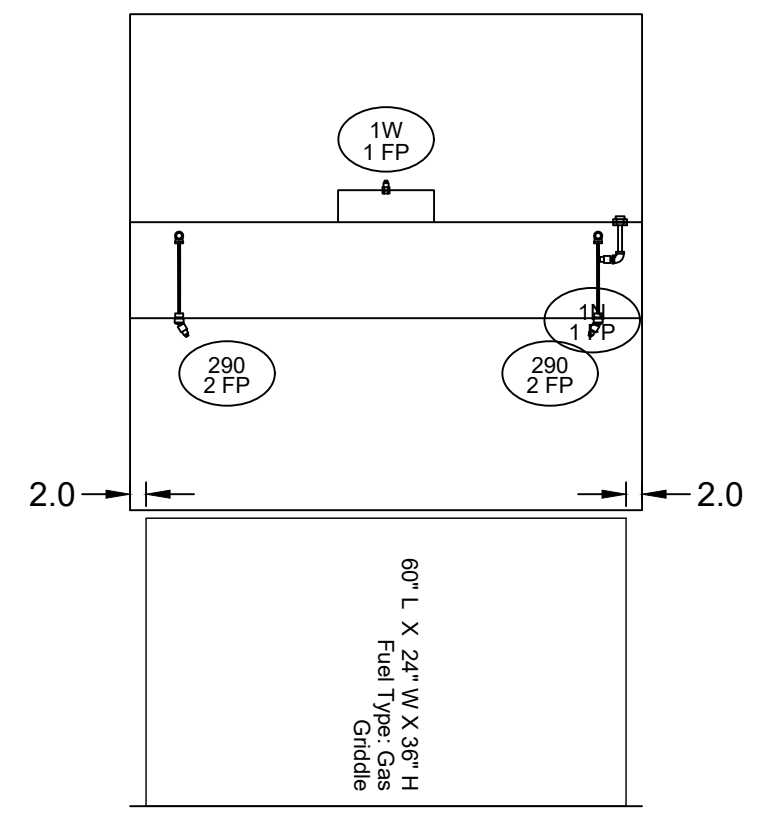
**FIRE SYSTEM OPTIONS AND ACCESSORIES**  
 FULL INSTALLATION (INCLUDES PRE-PIPED HOOD(S) WITH DETECTION AND FACTORY COORDINATED INSTALL)  
 CHROME SLEEVES FOR FACTORY PROVIDED APPLIANCES DROPS - INCLUDED  
 METAL BLOW-OFF CAPS - INCLUDED  
 HOOD SUPPRESSION TANK - INCLUDED - 3 GAL. - ((1) 3.0 TANK(S))  
 REMOTE PULL STATION - STANDARD - FIELD INSTALLATION AT SINGLE POINT OF EGRESS

**SPECIAL DESIGN REQUESTS**  
 SDR #K1800144 - CULVERS 4VAT 2FIRE PROCESS - GRIDDLE HOOD

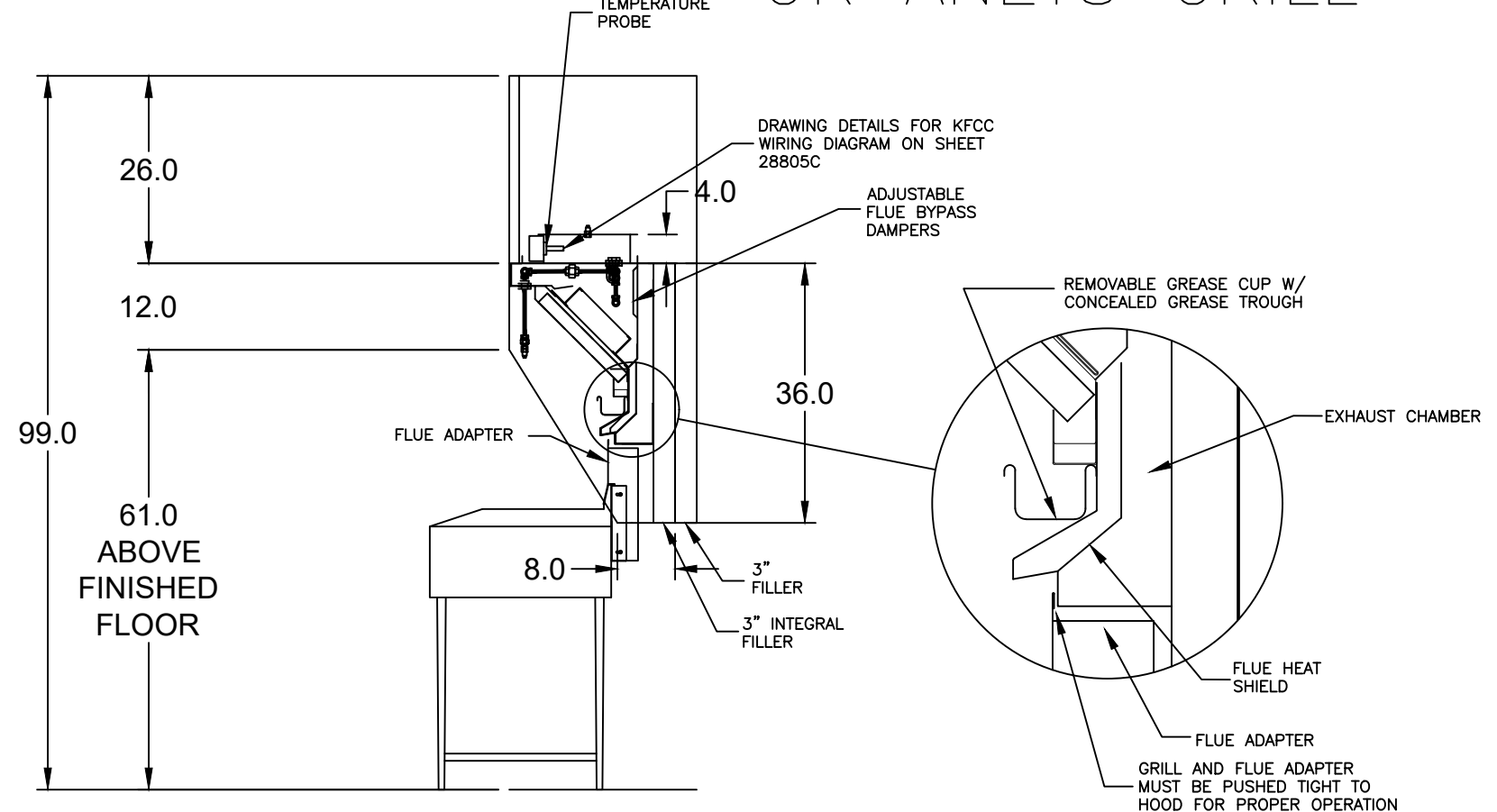


MARK: Griddle Hood - SECTION 1 PLAN VIEW

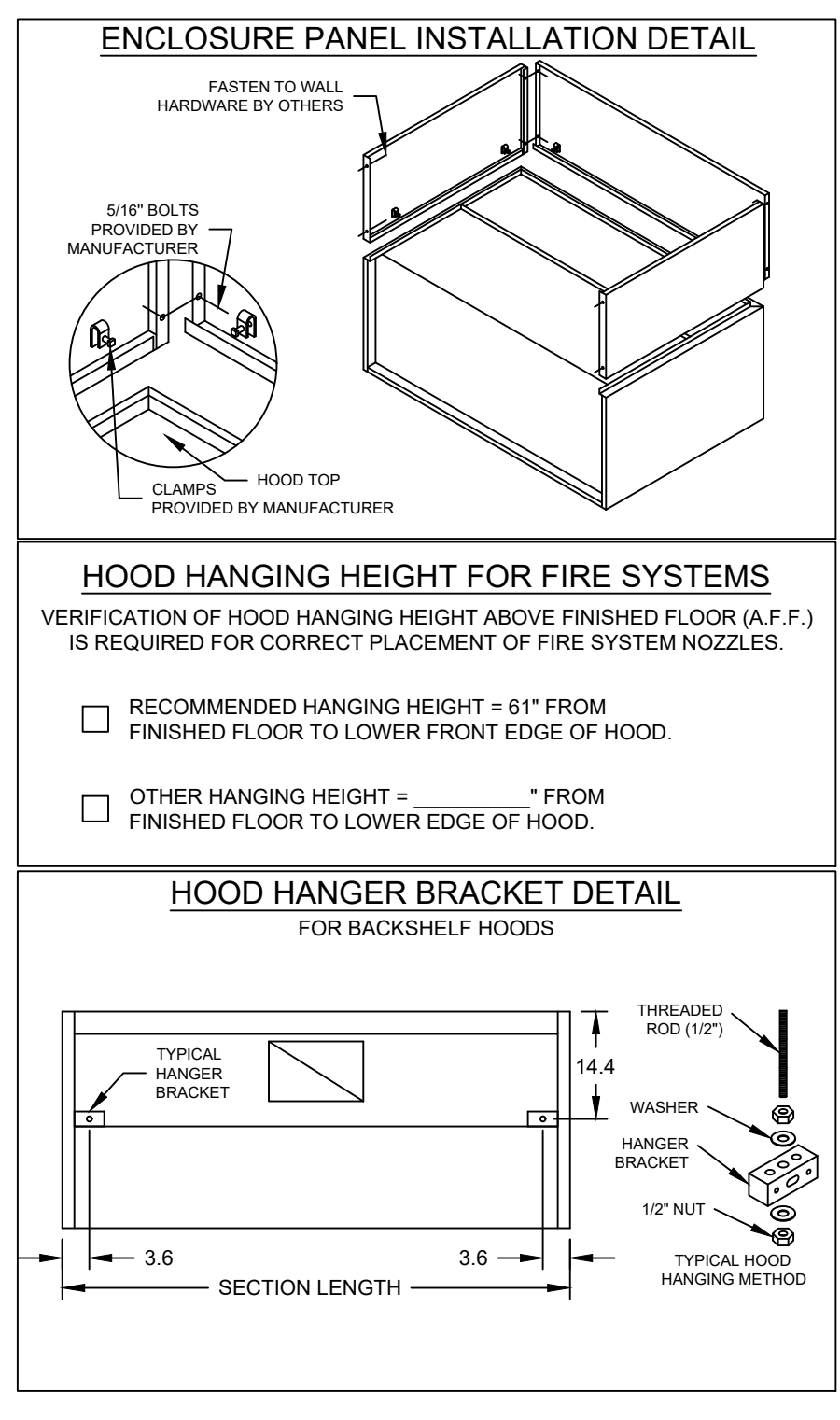
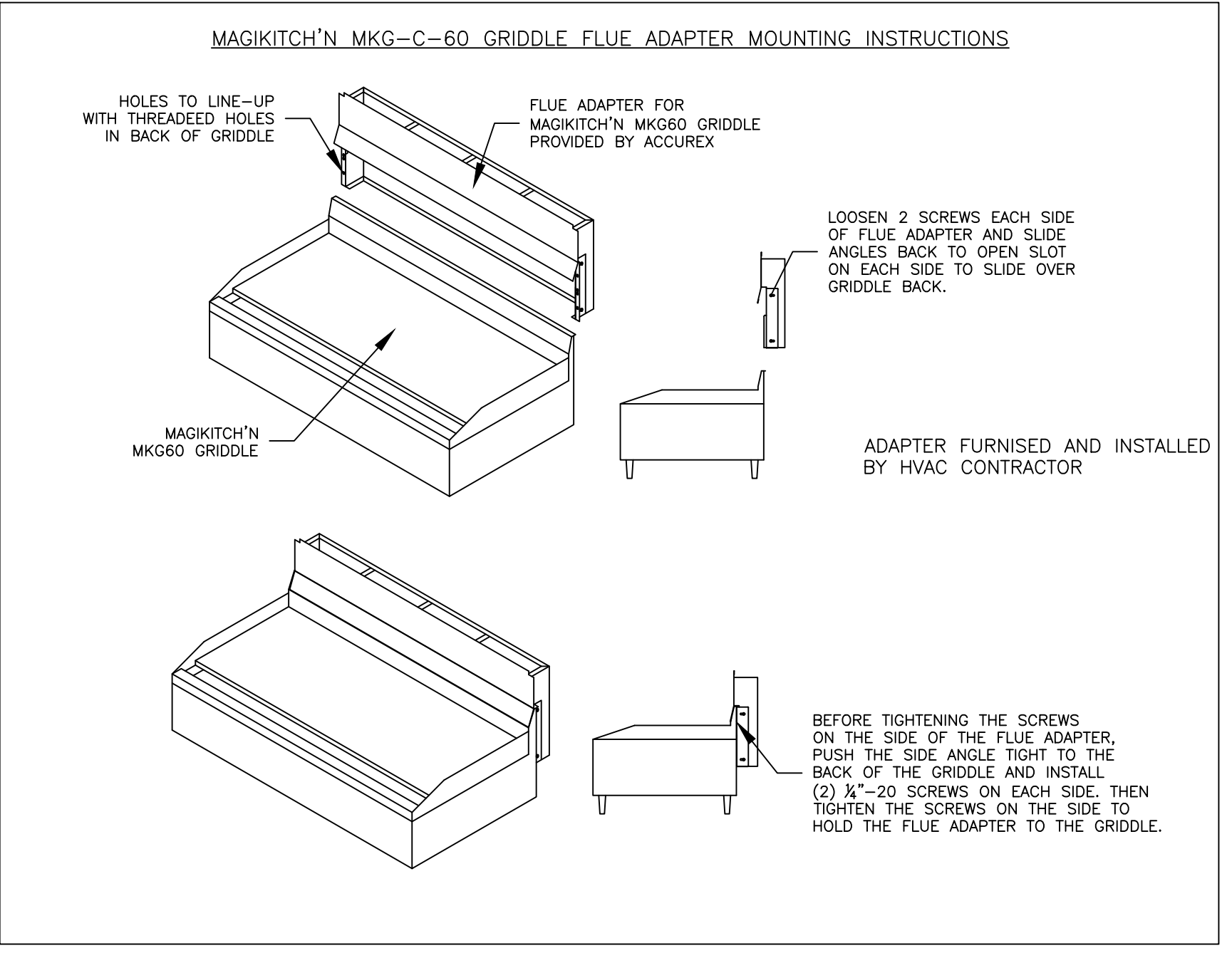
MUST USE WITH MAGIKITCH'N MODEL MKG-C-60  
 VERIFY MAGIKITCHEN OR ANETS GRILL



SECTION 1 ELEVATION VIEW



MARK: Griddle Hood SECTION VIEW



**ACCUREX**

PROJECT: 12/4/2019  
 MARK: GRIDDLE HOOD FIRE SUPPRESSION-GRIDDLE HOOD  
 ACCUREX - WI, IA  
 PHILLIP KRAFT  
 PHILLIP.KRAFT@ACCUREX.COM  
 262-227-7865

OWNER:  
 TFC3 LLC  
 22 Prairie Lane  
 Orland Park, IL 60467  
 Sam Flosi  
 708-822-7432

© 2024

NEW CULVER'S RESTAURANT  
 200 S COUNTY ROAD 200 E  
 Danville, IN 46122  
 County of HENDRICKS

OWNER:  
 OLLMANN ASSOCIATES ARCHITECTS, P.C.  
 200 South State Street  
 Belvidere, Illinois 61008  
 815-544-7790 Phone  
 © OAA. All rights reserved. Any copying, transmission or disclosure subject to OAA written approval.

GRIDDLE HOOD/EXHAUST SCHEDULE & DETAILS  
 Revision: 11-22-2023  
 Date: 11-22-2023

FOR CONSTRUCTION

2023-116  
 M202



**Ceiling Exhaust Fan**

MARK INFORMATION		FAN INFORMATION						MOTOR INFORMATION				
QTY	MARK	MODEL	VOLUME (CFM)	TOTAL EXTERNAL SP (IN WG)	FAN RPM	OPERATING POWER (HP)	WEIGHT (LB.)	SIZE (HP)	V/C/P	ENCLOSURE	MOTOR RPM	WINDINGS
1	EF-1A	XCR-B80	75	0.125	881	0.01	10	0	115/60/1	OP	900	1

**EF-1A : SELECTED OPTIONS AND ACCESSORIES**

UL/cUL 507 Listed - Electric Fan  
 Solid State Speed Control, 6 Amp, Mounted and Wired Internally  
 Round Hooded Wall Cap, (PN: WC-6) Shipped Loose  
 Round Duct Connection  
 Adjustable easy installation mounting bracket  
 Standard Grille  
 Polypropylene Wheel Material  
 Can Be Used to Comply with: ASHRAE 62.2 and Washington State Energy Code

**SPECIAL DESIGN REQUESTS**

(1)-WC-4 Wall Cap (F1600858)

**Direct Drive Centrifugal Roof Exhaust Fan**

MARK INFORMATION		FAN INFORMATION						MOTOR INFORMATION					
QTY	MARK	MODEL	VOLUME (CFM)	TOTAL EXTERNAL SP (IN WG)	FAN RPM	OPERATING POWER (HP)	WEIGHT (LB.)	SIZE (HP)	V/C/P	ENCLOSURE	MOTOR RPM	WINDINGS	NEC FLA*
1	PRV-1 Restroom	XRED-090-VG	375	0.5	1,466	0.06	40	0.1	115/60/1	TN	1725	1	NA

\*NEC FLA - Based on table 430.250 or 430.248 of National Electrical Code 2020. Actual motor FLA may vary for sizing thermal overload, consult factory

**PRV-1 Restroom : SELECTED OPTIONS AND ACCESSORIES**

Standard Curb Cap Size - 17 Square  
 UL/cUL 705 Listed - "Power Ventilators"  
 Switch, NEMA-1, Toggle, Shipped with Unit  
 Hinge, Factory Installed  
 Damper Shipped Loose, BD-100-PB-10X10, Gravity Operated, Not Coated  
 Birdscreen: Galvanized, nom. 84% Free Area  
 Composite Wheel Material

**CONTROL INFORMATION**

MARK	ELECTRICAL CONTROL PACKAGE		USER INTERFACE	
	MODEL	LOCATION	TYPE	LOCATION
CONTROLS	XKC-CV-S-22-2-1-0	SHIP LOOSE ENCLOSURE	FULL COLOR TOUCHSCREEN	SHIP LOOSE

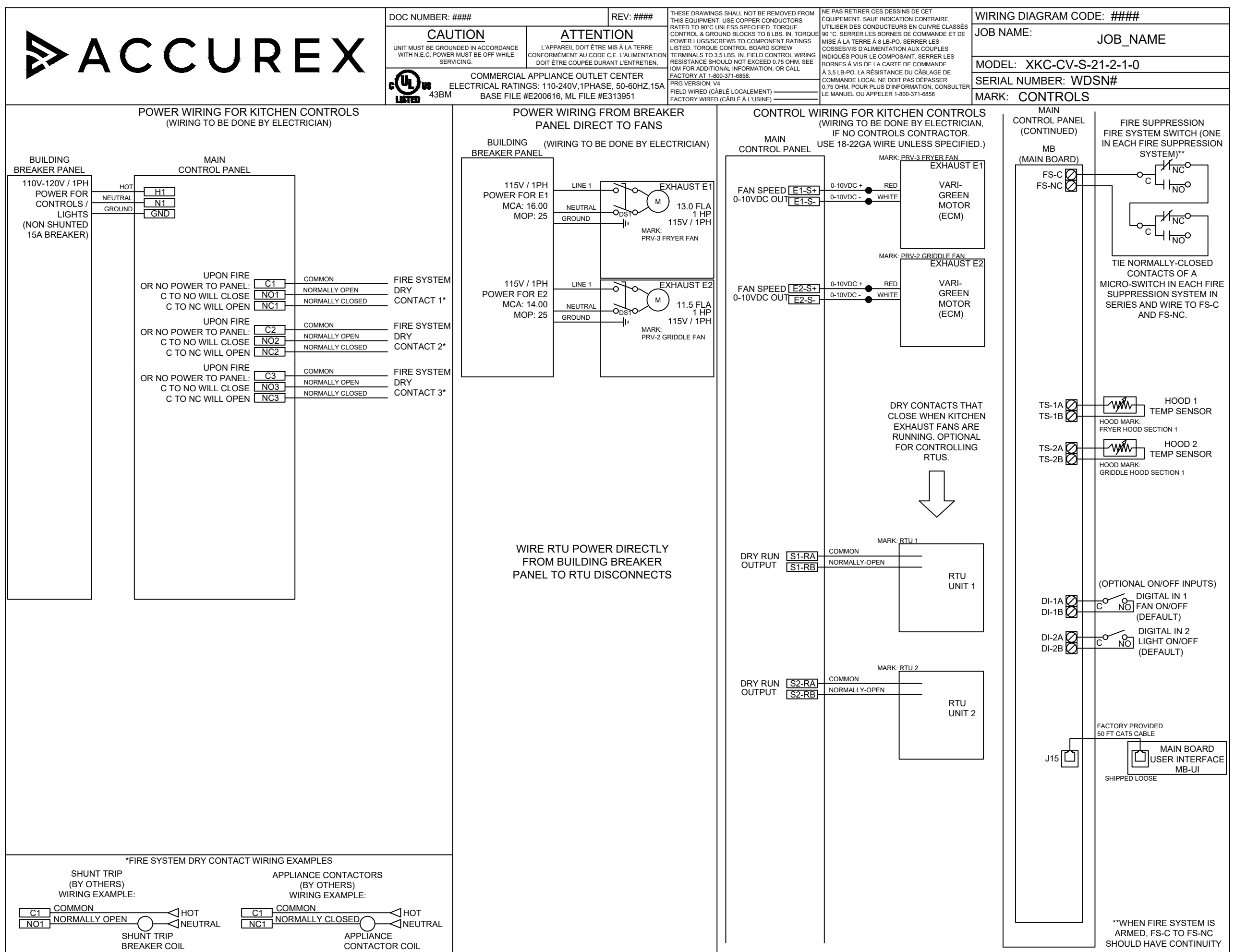
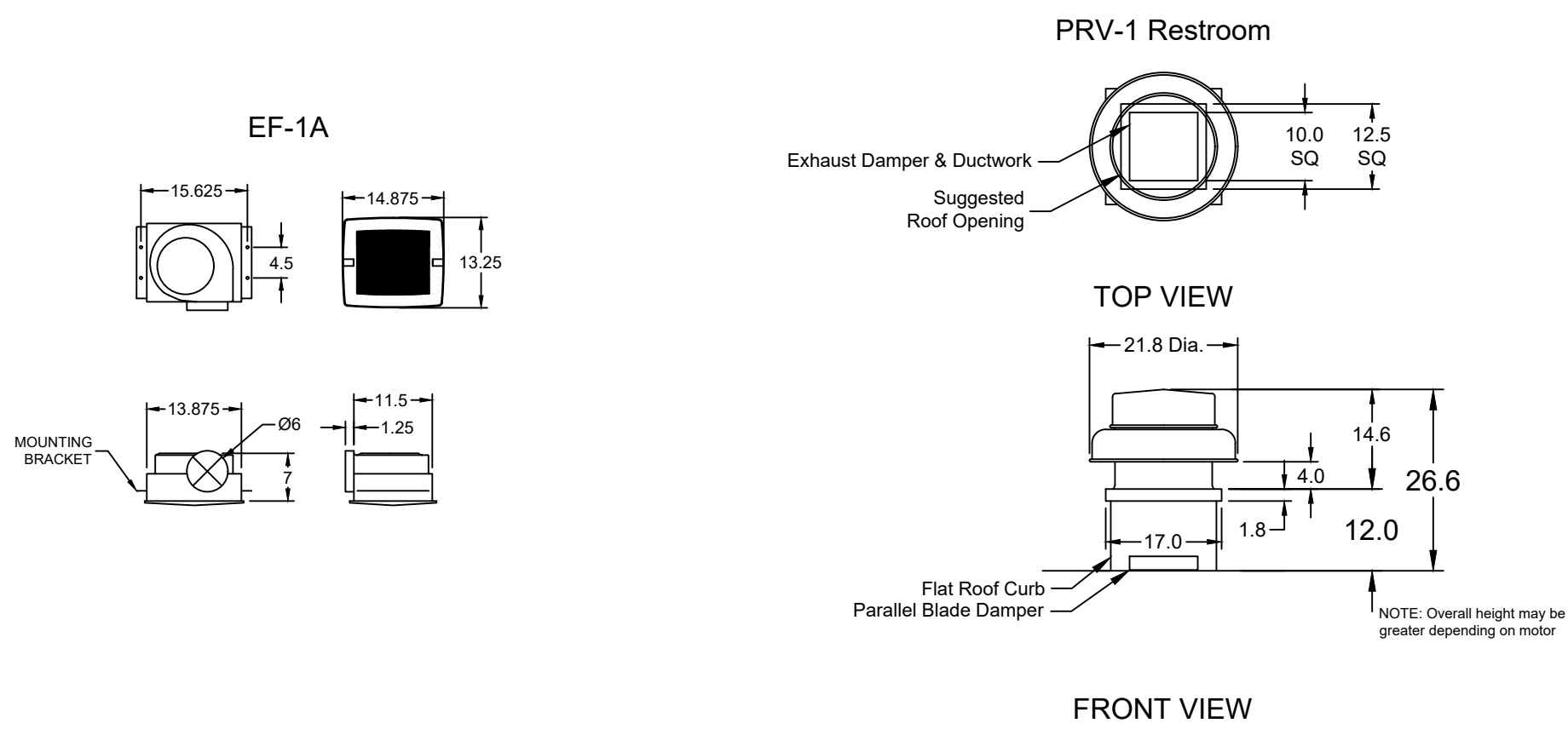
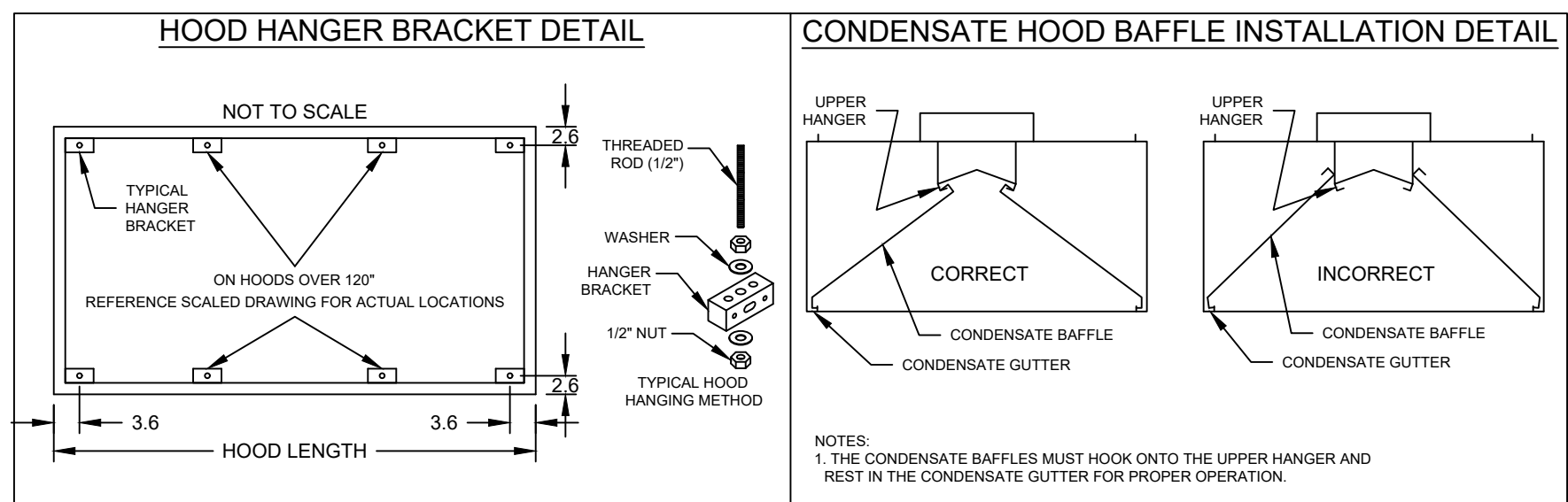
FANS CONTROLLED											
FAN #	TYPE	FAN	FAN MARK	ZONE	CFM	MOTOR HP	MOTOR VOLT	CYCLE	MOTOR PHASE	MOTOR STARTER IN PANEL	VFD IN PANEL
1	SUPPLY	S1	RTU-1	1	1500	1	208	60	3	NO	NO
2	SUPPLY	S2	RTU-2	2	1500	1	208	60	3	NO	NO
3	EXHAUST	E1	PRV-2 GRIDDLE FAN	2	1497	1	115	60	1	NO	NO
4	EXHAUST	E2	PRV-3 FRYER FAN	1	1500	1	115	60	1	NO	NO

**CONTROL FEATURES**

TEMP SENSORS (FACTORY INSTALLED) - QTY. 2  
 DRY FIRE CONTACTS - QTY. 2  
 EXHAUST MAX DURING FIRE  
 SUPPLY OFF DURING FIRE

**SPECIAL DESIGN REQUESTS**

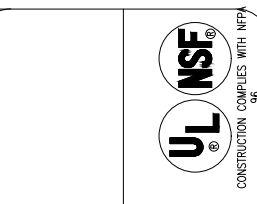
SDR #K2000462 - CULVERS CONTROL PANEL - EXTRA SET OF FIRE CONTACTS - REVISE WIRING DIAGRAMS



**ACCUREX**

**CULVERS - METROL 2021 (NC)**  
 1.27.2023  
 ITEM 25 CONDENSATE HOOD PRV-1 RESTROOM CONTROLS

ACCUREX - W/LA  
 PHILLIP KRAFT  
 PHILLIP.KRAFT@ACCUREX.COM  
 262-227-7865



© 2024

**NEW CULVER'S RESTAURANT**  
 200 S COUNTY ROAD 200 E  
 Danville, IN 46122  
 County of HENDRICKS

**Culver's**  
 Culver Franchising System, Inc.  
 1240 Water Street  
 Prairie du Sac, WI 53578  
 608-843-7880

**OWNER:**  
 TFC3 LLC  
 22 Prairie Lane  
 Orland Park, IL 60467  
 Sam Flosi  
 708-822-7432

**OLLMANN ASSOCIATES ARCHITECTS, P.C.**  
 200 South State Street  
 Belvidere, Illinois 61008  
 815-544-7790 Phone  
 © OAA. All rights reserved. any copying, transmittal or disclosure subject to OAA written approval.

**FAN SCHEDULE & DETAILS**

Date: 11-22-2023  
 Revision:

2023-116  
 M204

FOR CONSTRUCTION