

**GENERAL NOTES:**

- DUCT SYSTEMS SERVING REMOVAL OF GREASE LADEN AIR (TYPE 1 HOOD) SHALL BE CONSTRUCTED AND INSTALLED SO THAT GREASE WILL NOT ACCUMULATE IN DUCTWORK. DUCTWORK SHALL SLOPE AT 2% TOWARD HOOD OR GREASE RESERVOIR. PROVIDE DUCT CLEAN OUTS AT ALL CHANGES OF DIRECTION WITH GREASE TIGHT ACCESS DOORS.
- DUCTWORK SERVING KITCHEN AND WORK ROOM AREAS SHALL NOT BE LINED. DUCTWORK SERVING THESE AREAS SHALL UTILIZE EXTERNAL DUCT WRAP INSULATION.
- MAINTAIN MINIMUM 10'-0" CLEARANCE BETWEEN OUTDOOR AIR INTAKES AND EXHAUST FAN/VENT TERMINATIONS.
- KITCHEN HOODS ARE PROVIDED BY KITCHEN EQUIPMENT SUPPLIER AND INSTALLED BY MECHANICAL CONTRACTOR.
- REFER TO HOOD MANUFACTURER SHOP DRAWINGS FOR HOOD SUPPORT INFORMATION.
- CEILING SPACE IS LIMITED. COORDINATE WORK WITH OTHER TRADES.
- EXPOSED DUCTWORK SHALL BE CLEAN AND FREE OF DEFECTS.
- EXPOSED DUCTWORK SHALL BE CONSTRUCTED OF PAINT LOCK SHEETMETAL AND PAINTED AS DIRECTED BY ARCHITECT.

**PLAN NOTES:**

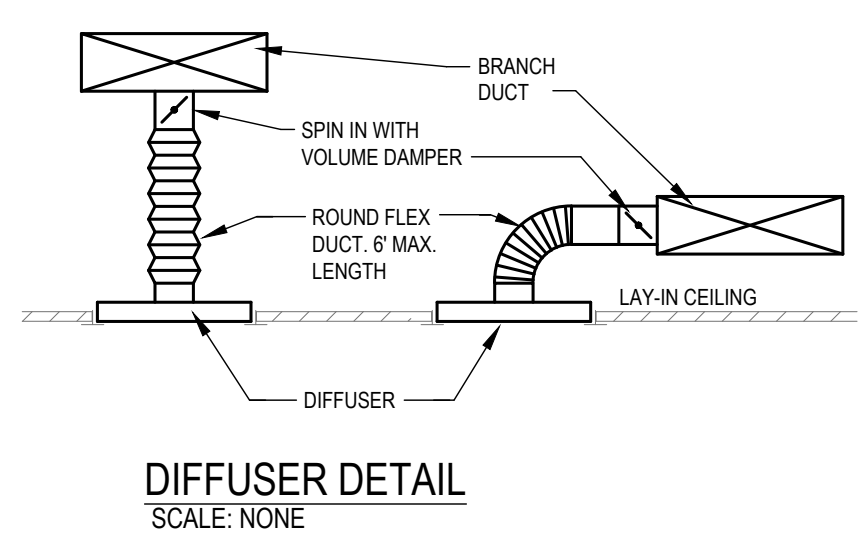
- RETURN AIR DUCT LOCATED BETWEEN ROOF TRUSSES. OPEN DUCTWORK UP TOWARDS STRUCTURE. COVER OPENING WITH 1/2" EXPANDED MESH.
- LOCATION OF MANUAL PULL STATION. INSTALL PER MANUFACTURER INSTRUCTIONS.
- EXISTING RTU THERMOSTAT TO BE RELOCATED AS INDICATED. COORDINATE REQUIREMENTS.
- CONNECT MAKE UP AIR DUCT TO EXHAUST HOOD SUPPLY PLENUM PER MANUFACTURER INSTRUCTIONS. SEE SHEET M3 FOR CONNECTION SIZE. PROVIDE BALANCE DAMPER AND BALANCE SUPPLY CFM EQUALLY AMONG RISERS.
- CONNECT AIR CONDITIONING DUCT TO EXHAUST HOOD A/C SUPPLY PLENUM PER MANUFACTURER INSTRUCTIONS. SEE SHEET M3 FOR CONNECTION SIZE. PROVIDE BALANCE DAMPER AND BALANCE SUPPLY CFM EQUALLY AMONG RISERS.
- EXHAUST HOOD PROVIDED BY OTHERS. INSTALLED BY MECHANICAL CONTRACTOR. INSTALL PER MANUFACTURER'S INSTRUCTIONS.
- TRANSITION AND CONNECT 10" GREASE DUCT TO EXHAUST HOOD AS SHOWN. ROUTE DUCT UP AND CONNECT TO EXHAUST FAN. OFFSET AS REQUIRED TO AVOID ROOF STRUCTURE AND TO MAINTAIN 10'-0" CLEARANCE FROM ALL OUTSIDE AIR INTAKES. REFER TO DETAIL ON SHEET M-2. ALL GREASE DUCT SHALL BE INSTALLED WITH DUCT WRAP AND ACCESS DOORS AS DETAILED AND PER MANUFACTURER INSTRUCTIONS. SEE CAPTIVE AIRE DRAWING.
- TRANSITION AND CONNECT 14" GREASE DUCT TO EXHAUST HOOD AS SHOWN. ROUTE DUCT UP AND CONNECT TO EXHAUST FAN. OFFSET AS REQUIRED TO AVOID ROOF STRUCTURE AND TO MAINTAIN 10'-0" CLEARANCE FROM ALL OUTSIDE AIR INTAKES. REFER TO DETAIL ON SHEET M-2. ALL GREASE DUCT SHALL BE INSTALLED WITH DUCT WRAP AND ACCESS DOORS AS DETAILED AND PER MANUFACTURER INSTRUCTIONS. SEE CAPTIVE AIRE DRAWING.
- COORDINATE DUCT ROUTING WITH ELECTRICAL GEAR. DO NOT ROUTE DUCTWORK ABOVE ELECTRICAL GEAR.
- EXISTING DUCTWORK BETWEEN TRUSSES. FIELD VERIFY EXISTING CONDITIONS. MODIFY EXISTING DUCTWORK AS REQUIRED TO MAKE FINAL CONNECTIONS.
- ROUTE DUCTWORK THROUGH OR BETWEEN ROOF TRUSSES. COORDINATE WITH EXISTING STRUCTURE.
- SUPPORT EXHAUST FAN FROM STRUCTURE AS REQUIRED BY THE MANUFACTURER.
- ROUTE DUCT AS HIGH AS POSSIBLE OVER OFFICE AREA TO ALLOW FOR ROUTING OF CABLES.
- MOUNT CONDENSING UNIT ON ROOF AS DETAILED AND AS REQUIRED BY THE MANUFACTURER. CONNECT REFRIGERANT PIPING PER MANUFACTURER RECOMMENDATIONS. SEE ARCHITECTURAL PLANS FOR MOUNTING DETAIL.
- EXPOSED DUCTWORK SHALL BE DUAL WALL PAINTLOCK CONSTRUCTION AND PAINTED AS PER DIRECTION OF ARCHITECT (TYP.).
- COORDINATE DUCT ROUTING WITH LIGHTING.
- HOOD SHALL BE PROVIDED WITH FACTORY PRE-WIRE PACKAGE AND A PRE-ENGINEERED UL-300 FIRE SUPPRESSION SYSTEM. SYSTEM SHALL BE PROPERLY SIZED FOR THE HOOD. DUCT PLENUM AND ALL EQUIPMENT BELOW (VERIFY EXACT REQUIREMENTS WITH KITCHEN EQUIPMENT SUPPLIER). HOOD EXHAUST, MAKE-UP AND LIGHTS SHALL BE SWITCHED FROM CONTROL PANEL THAT IS INTEGRAL TO FRONT OF UTILITY CABINET. UTILITY CABINET SHALL SERVE ALL HOODS.
- EXTEND AND CONNECT DUCTWORK TO EXISTING. FIELD VERIFY EXISTING CONDITIONS AND REQUIREMENTS.
- PROVIDE LOCKING QUADRANT BALANCE DAMPER. ENSURE ACCESS.
- PROVIDE CAPTIVE AIRE WBE WINDBAND EXTENSION FOR KEF-1 AND KEF-2.
- PROVIDE LOCKING QUADRANT BALANCE DAMPER AND SQUARE TO 16" ROUND TRANSITION FOR DUCT CONNECTION TO RETURN GRILLE.
- BALANCE EXISTING DIFFUSER TO INDICATED CFM.

**A MECHANICAL PLAN**  
 SCALE: 1/4" = 1'-0"



NOTE:  
 PROVIDE SHORT RADIUS ELBOWS (1 TIMES CENTERLINE 90° ELL) FOR ELBOW DOWN TO DIFFUSER ON EXPOSED DUCTWORK IN DINING ROOM. DIFFUSER SHALL BE MINIMUM OF 9'-0" A.F.F. SEE DETAIL.

NOTE:  
 DURING DEMOLITION PHASE, GENERAL CONTRACTOR TO PROVIDE TEMPORARY OPENING(S), IF NECESSARY IN EXISTING BUILDING WALL TO FACILITATE INSTALLATION OF NEW HVAC DUCTWORK IN THE DINING AREA. HVAC DUCTWORK IS TO BE INSTALLED WITHIN THE ROOF TRUSS SPACE AND TO BE INSTALLED BETWEEN TRUSSES AND/OR THRU THE EXISTING TRUSS WEB OPENINGS. GENERAL CONTRACTOR TO COORDINATE SIZE AND LOCATION OF TEMPORARY OPENING(S) WITH THE MECHANICAL CONTRACTOR.



SPECIFICATION SECTION 230593 TESTING, ADJUSTING, AND BALANCE REQUIRES AN INDEPENDENT TAB CONTRACTOR (NEBB OR AABC) TO TEST ALL EQUIPMENT TO ENSURE COMPLIANCE WITH DRAWINGS. OWNER'S REPRESENTATIVE SHALL RECEIVE REPORT / VERIFICATION.

MECHANICAL LEGEND							
HVAC:		HVAC:		HVAC:		MISC. SYMBOLS:	
SYMBOL	DESCRIPTION	SYMBOL	DESCRIPTION	SYMBOL	DESCRIPTION	SYMBOL	DESCRIPTION
	A-3x9 200 SUPPLY AIR DIFFUSER MARK- SIZE: MARK-LOW CFM		ELBOW ROUND DUCT		ECCENTRIC TRANSITION		EQUIPMENT IDENTIFICATION
	C-22x10 RETURN AIR GRILLE MARK- SIZE: MARK- SIZE		ROUND DUCT DROP / DOWN		DUCT OFFSET - RISE OR DROP		PLAN NOTE
	C-22x10 RETURN AIR GRILLE WITH SOUND BOOT MARK- SIZE: MARK- SIZE		ROUND DUCT RISE / UP		FLEX DUCT (5'-0" MAX. LENGTH)		ABOVE FINISHED FLOOR
	SIDE WALL REGISTER / GRILLE		FLEXIBLE CONNECTION		OPPOSED BLADE DAMPER		SUPPLY AIR
	SUPPLY AIR DUCT RISE / UP		DUCT SIZE / DIMENSIONS FIRST SIZE, TOP DIMENSION		PARALLEL BLADE DAMPER		RETURN AIR
	SUPPLY DUCT DROP / DOWN		45° HIGH EFFICIENCY TAKE-OFF		THERMOSTAT / SENSOR		EXHAUST AIR
	RETURN OR EXHAUST DUCT RISE / UP		45° HIGH EFFICIENCY TAKE-OFF WITH LOCKING QUAD. DAMPER		HUMIDISTAT / SENSOR		OUTSIDE AIR
	RETURN OR EXHAUST DUCT DROP / DOWN		CONCENTRIC TRANSITION		FIRE SMOKE DAMPER		RETURN AIR GRILLE
	ELBOW WITH TURNING VANES		RECT. TO ROUND TRANSITION		FIRE DAMPER		

THE DESIGN AND DETAILS DISCLOSED HEREIN ARE THE EXCLUSIVE PROPERTY OF RODGER W. BAKER, AIA AND SHALL NOT BE COPIED OR REPRODUCED IN WHOLE OR IN PART WITHOUT HIS PRIOR WRITTEN CONSENT.

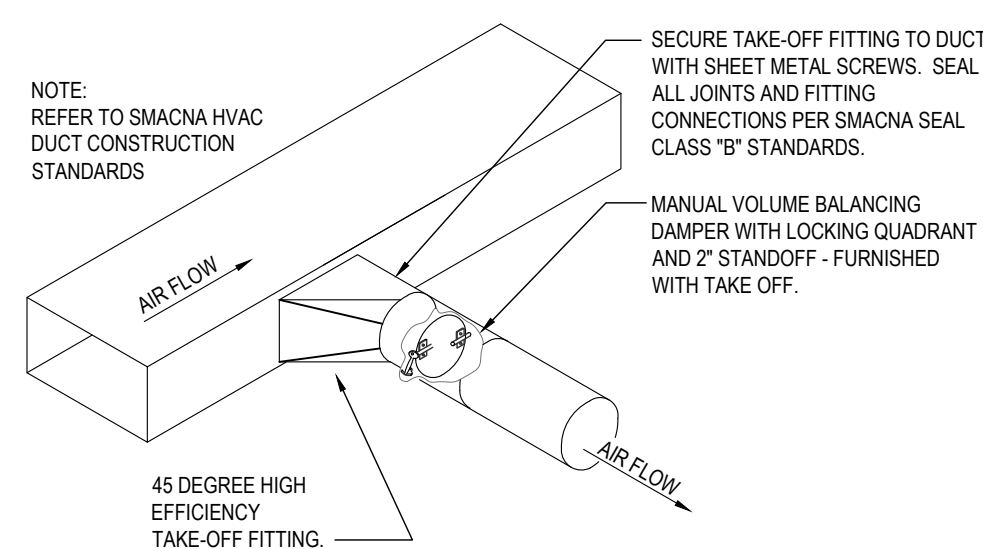
RODGER W. BAKER, AIA

**MECHANICAL PLAN**

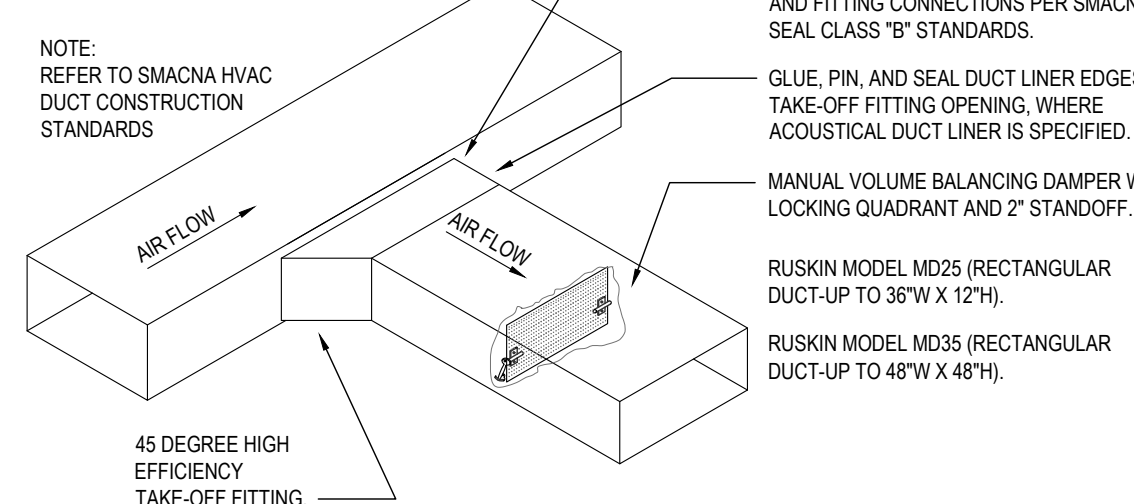
DATE  
 5/23/2023  
 5/26/2023

DRAWN BY:  
 CHECKED BY:

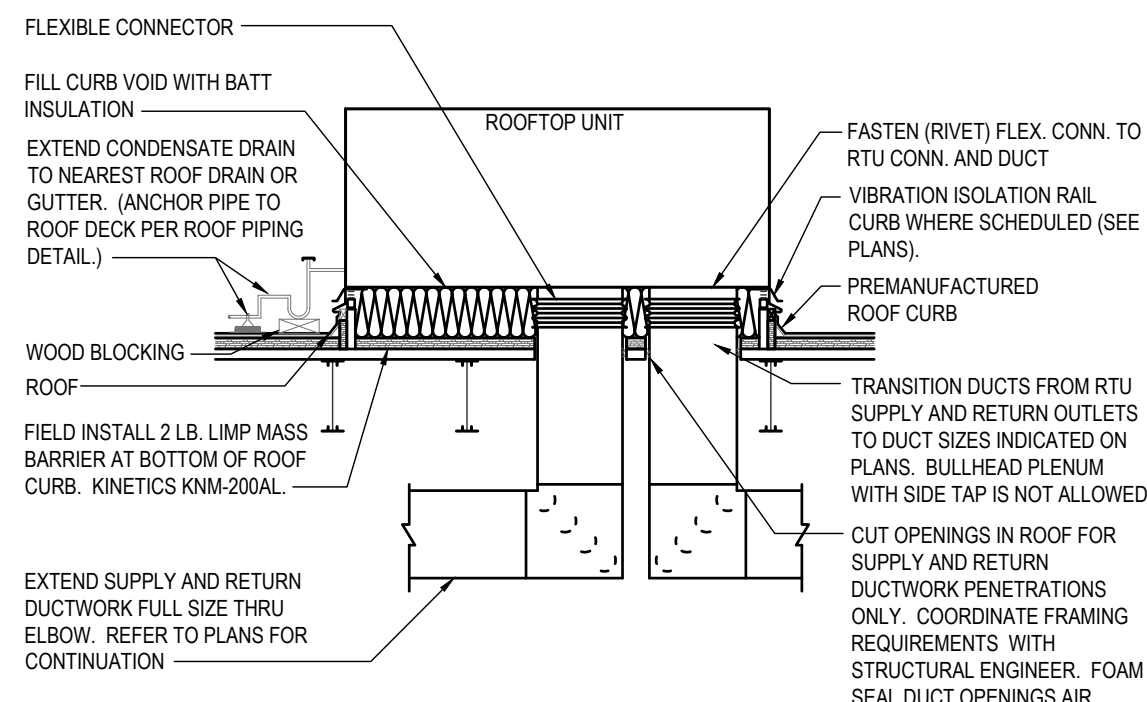
SHEET NO.  
**M1**



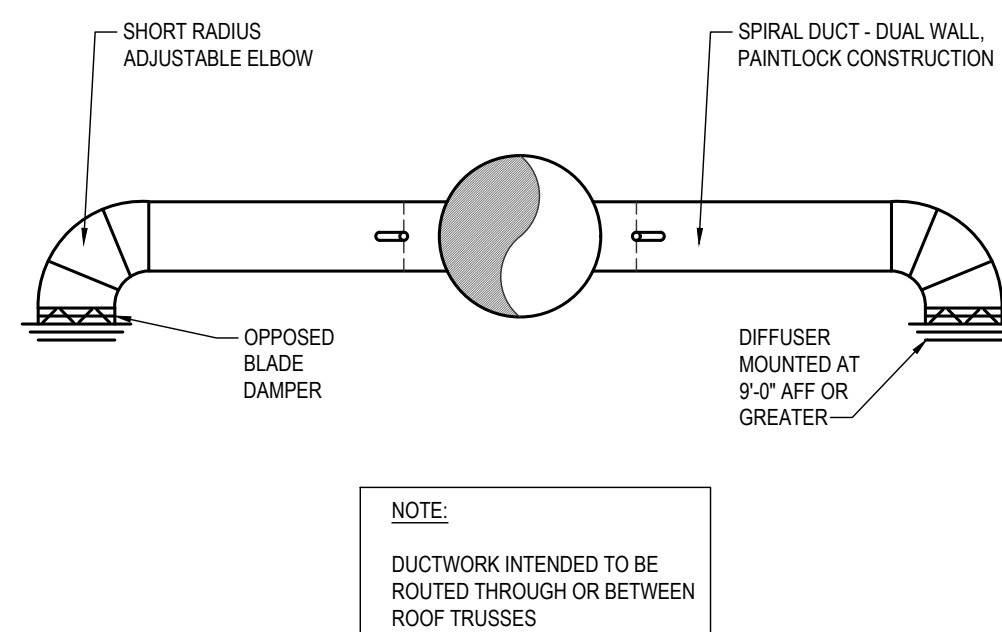
**1** ROUND DUCT TAKE-OFF  
NO SCALE



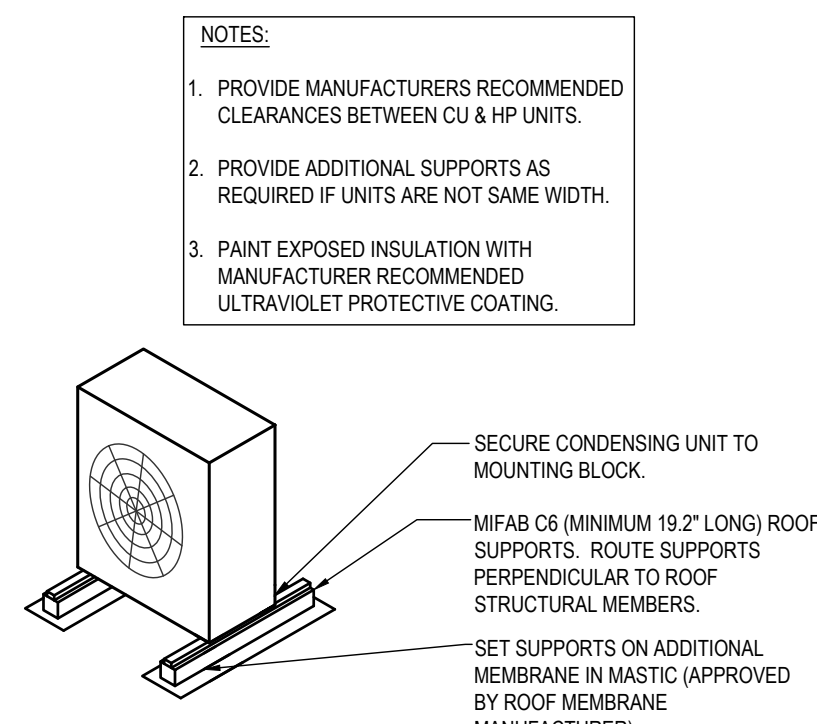
**2** RECTANGULAR DUCT TAKE-OFF  
NO SCALE



**3** DOWNFLOW ROOF TOP UNIT DETAIL  
NO SCALE

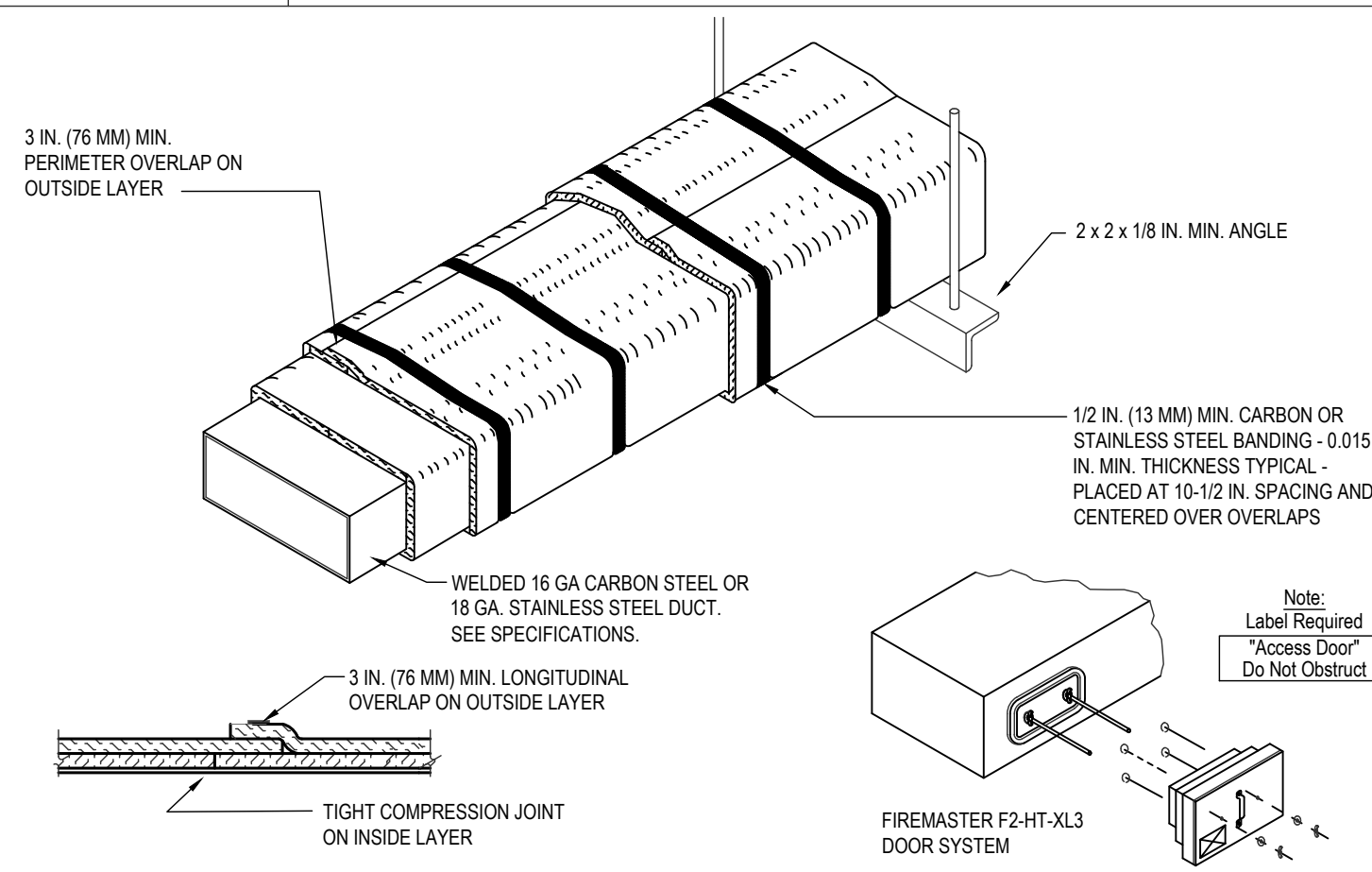


**4** DINING ROOM DIFFUSER DETAIL  
NO SCALE

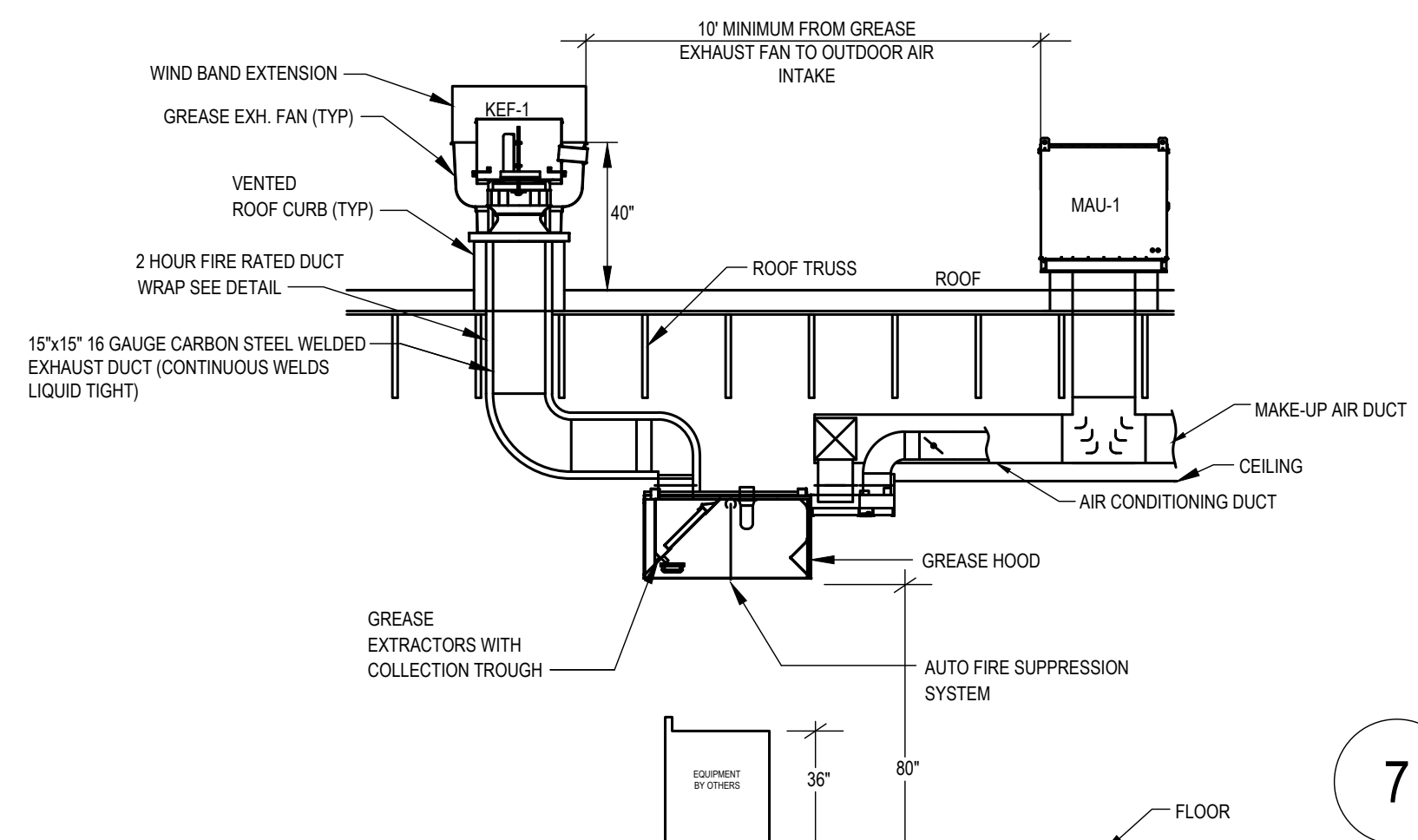


**5** ROOF CONDENSING UNIT MOUNTING  
NO SCALE CONDENSER ON ROOF

- NOTES:
- THERMAL CERAMICS FIREMASTER FASTWRAP XL OR PYROSCAT XL HAS BEEN TESTED IN ACCORDANCE WITH ASTM E2306 TO PROVIDE ZERO CLEARANCE TO COMBUSTIBLES AND MEETS THE REQUIREMENTS FOR ONE OR TWO HOUR ENCLOSURES. THROUGH PENETRATIONS FIRESTOP SYSTEMS ARE TESTED IN ACCORDANCE WITH EITHER ASTM E 814 OR UL 1479. ICC-ES APPROVAL PER REPORT ESR 2213 OR ESR 2832. UNDERWRITERS LABORATORIES (UL) LISTINGS SHOW COMPLIANCE TO UL 1479 FOR THROUGH PENETRATION FIRESTOP SYSTEMS.
  - COMPLIANT TO THE FOLLOWING CODES: NFPA 96 2003 AND 2006 INTERNATIONAL MECHANICAL CODES 2006 UNIFORM MECHANICAL CODE.
  - INSULATION APPLIED IN TWO LAYERS WITH TIGHT COMPRESSION JOINT ON INSIDE LAYER AND 3 INCH MINIMUM OVERLAPS ON BOTH PERIMETER AND LONGITUDINAL OVERLAPS ON OUTSIDE LAYER.
  - GREASE EXHAUST DUCT RUNS FROM THE HOOD EXHAUST CONNECTION UP TO THE EXHAUST FAN ON THE ROOF WITH MINIMAL TURNS OR BENDS AND MAINTAINING MINIMUM 1/4 UNIT VERTICAL RISE PER 12 UNITS HORIZONTAL RUN. NFPA 96 COMPLIANT ACCESS DOORS LOCATED AS REQUIRED BY CODE.
  - THERMAL CERAMICS FIREMASTER ACCESS DOORS AS SPECIFIED IN ICC-ES BUILDING CODE REPORTS ESR 2213 OR ESR 2832.
  - ROOF MOUNTED EXHAUST FAN IS MOUNTED ON A HINGED BASE WHICH ALLOWS ACCESS TO THE DUCT FROM THE ROOF.
  - SUPPORT HANGER SYSTEMS DO NOT NEED TO BE WRAPPED PROVIDED THE HANGER RODS ARE AT LEAST A MINIMUM OF 3/8 IN. DIAMETER. USE MINIMUM 2 X 2 X 1/8 IN. STEEL ANGLE OR SMACNA EQUIVALENT SUPPORT SYSTEM.
  - THERMAL CERAMICS DUCT ENCLOSURE SYSTEM SHALL BE INSTALLED IN ACCORDANCE WITH MANUFACTURERS INSTRUCTIONS.
  - THERMAL CERAMICS DUCT WRAP SHALL BE INSTALLED ON THE DUCT FROM THE HOOD CONNECTION TO THE CONNECTION TO THE FAN.



**6** COMMERCIAL KITCHEN GREASE DUCT SYSTEM  
NO SCALE



**7** GREASE HOOD DETAIL  
NO SCALE

DIFFUSER SCHEDULE						
MARK	MFR	MODEL	NECK SIZE	FACE SIZE	FINISH	REMARKS
SD-1	TITUS	TMR	12"Ø	22"Ø	WHITE	WITH OPPOSED BLADE DAMPER, FIELD PREP FOR PAINTING
SD-2	TITUS	TBDI	10"Ø	--	WHITE	(2) SLOT - 1.5" SLOT WIDTH
SD-3	TITUS	PAS3	12"Ø	24"x24"	WHITE	
SD-4	TITUS	T3SQ4	8"Ø	24"x24"	WHITE	THERMAL VAV DIFFUSER
SD-5	TITUS	TMS3	6"Ø	12"x12"	WHITE	WITH OPPOSED BLADE DAMPER AND TRM KIT
SD-6	TITUS	TMS3	10"Ø	24"x24"	WHITE	
SD-7	TITUS	TMS3	8"Ø	12"x12"	WHITE	WITH OPPOSED BLADE DAMPER AND TRM KIT
SD-8	TITUS	300FS	8"x8"	8"x8"	WHITE	WITH OPPOSED BLADE DAMPER
RG-1	AMER. LOUVER CO.	STRATUS	20"x20"	24"x24"	WHITE	SEE NOTE 1.
RG-2	TITUS	330RL	8"x8"	--	WHITE	
RG-3	TITUS	50F	10"x22"	24"x12"	WHITE	

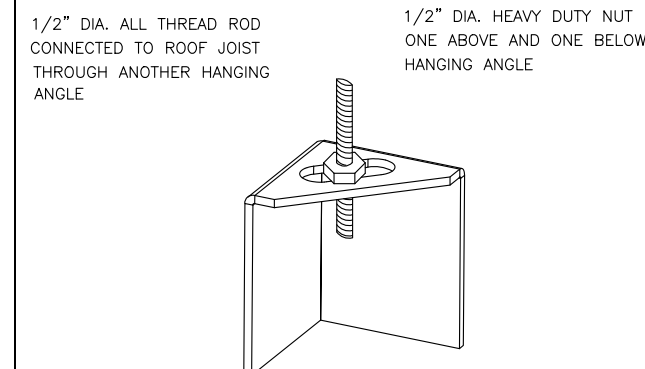
NOTES: 1. RETURN GRILLE TO BE PLASTIC FILTER RETURN, FILTER TO BE AMERICAN AIR FILTER (AAF) FRONTLINE GREEN 1", WITH AAF AMERIFRAME SIZE 20x20x1.

BUILDING AIR BALANCE SCHEDULE						
MARK	SPACE OR AREA	EXHAUST AIR CFM	OUTSIDE AIR CFM	RETURN AIR CFM	SUPPLY AIR CFM	REMARKS
(E)RTU-1	DINING	--	450	2,550	3,000	--
(E)RTU-2	DINING	--	600	3,400	4,000	--
(E)RTU-3	COOKLINE / OFFICE / COUNTER	--	300	3,700	4,000	--
MAU-1	COOKLINE / OFFICE / COUNTER	--	1,900	--	1,900	--
KEF-1	RANGE - KITCHEN HOOD	1,600	--	--	--	--
KEF-2	FRYERS - KITCHEN HOOD	775	--	--	--	--
KEF-3	DISWASHER - KITCHEN HOOD	525	--	--	--	--
(E)EF-1	WOMENS RESTROOM	75	--	--	--	--
(E)EF-2	MENS RESTROOM	75	--	--	--	--
TOTALS	BUILDING TOTALS	3,050	3,250	9,650	12,900	NOTE: AREA IS 200 CFM POSITIVE

PUMP SCHEDULE										
MARK	SERVICE	GPM	HEAD	EFFICIENCY	MOTOR			PIPE INCHES		REMARKS
					HP	RPM	ELECTRICAL	SUCTION	DISCHARGE	
RCP-1	DOMESTIC HW	10	6	-	1/2	3250	115/60/1	-	CONST	(1)

REMARKS: (1) SELECTION BASED ON BELL & GOSSETT INLINE PUMP MODEL PL-30. ALL BRONZE CONSTRUCTION. COORDINATE REQUIREMENTS WITH EXISTING WATER HEATER.

**ND-2 HANGING ANGLE DETAIL**



\* ROD AND NUTS TO BE SUPPLIED BY INSTALLING CONTRACTOR  
HANGING ANGLE IS PRE-FINISHED AT FACTORY

**HANGING ANGLE LOCATIONS**

HOOD STYLE	DIM FROM REAR	DIM FROM FRONT (24" H)	DIM FROM FRONT (30" H)
CANOPY ND2	4.166"	2.246"	2.246"
ND2-PSP-F	4.166"	2.246"	2.246"
BACKSHELF BD-2	4.166"	2.246"	-
VHB/VHB-G	36"X36"	42"X42"	48"X48"
FRONT/BACK DIMS BY SIZE	2.246"	2.246"	2.246"

**CALCULATIONS UTILIZED**

EXHAUST CFM=LENGTH OF HOOD X CFM/UNIT, (LOAD)  
SUPPLY CFM=EXHAUST CFM X PERCENTAGE REQUIRED  
TOTAL DUCT AREA=144 X (CFM)<sup>0.55</sup>  
DUCT LENGTH= TOTAL DUCT AREA / DUCT DPTH

\* CAPTIVE-AIRE DUCT CONNECTION SIZES ARE CALCULATED USING AN EXHAUST VELOCITY OF 1500-1800 FPM AND A SUPPLY VELOCITY OF 300-400 FPM.

**BUILDING CODES**

CAPTIVE-AIRE HOODS ARE BUILT IN COMPLIANCE WITH:  
ETL LISTED UNDER ETL FILE NUMBER 3054804-001/002  
UL STANDARD 710  
INTERTEK  
UL LISTED UNDER ETL FILE NUMBER 3054804-001/002

**CLEARANCE TO COMBUSTIBLES**

CAPTIVE-AIRE HOODS HAVE OPTIONAL CLEARANCE REDUCTION SYSTEMS AVAILABLE AS FOLLOWS:  
MATERIAL CLEARANCE REDUCTION SYSTEM  
NON-COMBUSTIBLE NONE REQUIRED  
LIMITED-COMBUSTIBLE 3" UNINSULATED STANDOFF  
COMBUSTIBLE 1" INSULATED STANDOFF

**GENERAL NOTES**

- ALL ELECTRICAL "FIELD" CONNECTIONS AND RELATED INTERCONNECTIONS BY ELECTRICAL CONTRACTORS.
- ALL PLUMBING "FIELD" CONNECTIONS AND RELATED INTERCONNECTIONS BY PLUMBING CONTRACTORS.
- HANGING BRACKETS LOCATED AND WELDED AS SHOWN ON PLANS. ALL OTHER HANGER MATERIALS PROVIDED BY INSTALLING CONTRACTORS.
- ALL CONNECTIONS FROM CAPTIVE-AIRE DUCT PER MECHANICAL CONTRACTOR'S PLANS.
- COOKING EQUIPMENT TO SHUT-OFF IN EVENT OF FIRE.
- EXHAUST FANS TO TURN ON IN EVENT OF FIRE.
- ALL LIGHTS/FIXTURE SHOWN INSTALLED BY CAPTIVE-AIRE ARE FACTORY PROVIDED. INTERCONNECTIONS BETWEEN HOODS AND TO SWITCHES BY ELECTRICAL CONTRACTORS.
- LAMPS FOR LIGHT FIXTURES BY INSTALLING CONTRACTORS.
- SEISMIC RESTRAINTS ARE RESPONSIBILITY OF INSTALLING CONTRACTOR.
- INSTALLING CONTRACTORS ASSUME ALL RELATED RESPONSIBILITY FOR VERIFICATION OF DIMENSIONAL DATA CONTAINED ON THESE DOCUMENTS FOR ACCURACY, INTEGRATION, AND ADMINISTRATION OF CODE REQUIREMENTS IN EFFECT PRIOR TO ANY RELEASE FOR PRODUCTION OF EQUIPMENT SHOWN.

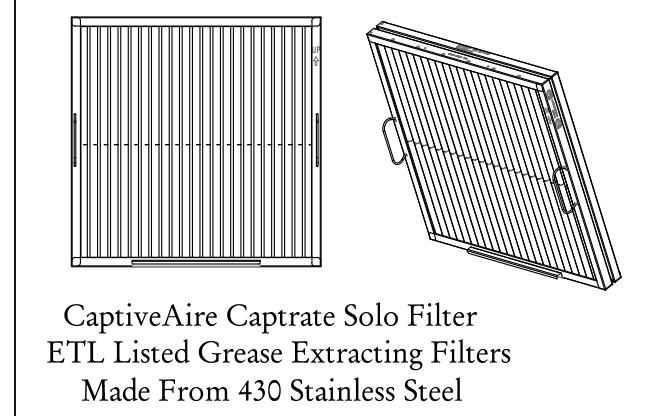
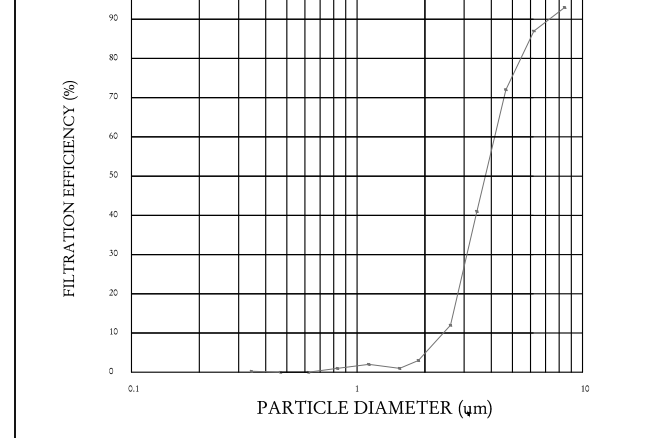
**BALANCE**

- KITCHEN HOODS MUST BE BALANCED WITH KITCHEN.
- KITCHENS SHALL BE NEGATIVE WITH RESPECT TO DINING AREA.
- RESTAURANT SHALL BE POSITIVE WITH RESPECT TO AMBIENT PRESSURE.

**ADDITIONAL**

- WRITTEN HOOD DIMENSIONS HAVE PRECEDENCE OVER SCALE.
- SIGNED AND "APPROVED" COPIES OF THIS DOCUMENT MUST BE RECEIVED BY THE FACTORY PRIOR TO COMMENCEMENT OF FABRICATION.

**FILTER DETAIL**



**HOOD INFORMATION - JOB#5977190**

HOOD NO	TAG	MODEL	MANUFACTURER	LENGTH	MAX COOKING TEMP	TYPE	APPLNCE DUTY	DESIGN CFMFT	TOTAL EXH CFM	EXHAUST PLENUM				MUA CFM	AC CFM	HOOD CONSTRUCTION	HOOD CONFIG	PATENT NUMBERS	
										WIDTH	LENG	DIA	CFM						
1	ITEM 33A	5424 ND-2-ACPSP-F	CAPTIVEAIRE	8' 0"	450 DEG	I	MEDIUM	200	1600	12"	256	0.084"	12"	256	0.084"	12"	256	0.084"	AC-PSP (UNITED STATES) - US PATENT 7963850 B2 AC-PSP WALL (CANADA) - CA PATENT 2626509 AC-PSP ISLAND (CANADA) - CA PATENT 2520330
2	ITEM 33B	5424 ND-2-ACPSP-F	CAPTIVEAIRE	5' 0"	450 DEG	I	MEDIUM	155	775	10"	155	0.047"	10"	155	0.047"	10"	155	0.047"	
3	ITEM 75	4224 VHB-G	CAPTIVEAIRE	3' 6"	700 DEG	II	N/A	150	525	8"	103	0.034"	8"	103	0.034"	8"	103	0.034"	

**HOOD INFORMATION**

HOOD NO	TAG	TYPE	QTY	HEIGHT	LENGTH	EFFICIENCY @ 7 MICRONS	QTY	TYPE	WIRE GAUGE	LOCATION	SIZE	UTILITY CABINET(S)		FIRE HOOD SYSTEM HANGING PIPING	WEIGHT
												TYPE	SIZE		
1	ITEM 33A	CAPTRATE SOLO FILTER	5	18"	16"	85% SEE FILTER SPEC	2	RECESSED ROUND	NO	LEFT	12"X4"X24"	DCV-2111	1 LIGHT 1 FAN	NO	603 LBS
2	ITEM 33B	CAPTRATE SOLO FILTER	3	18"	16"	85% SEE FILTER SPEC	2	RECESSED ROUND	NO					NO	394 LBS
3	ITEM 75						0							NO	161 LBS

**HOOD OPTIONS**

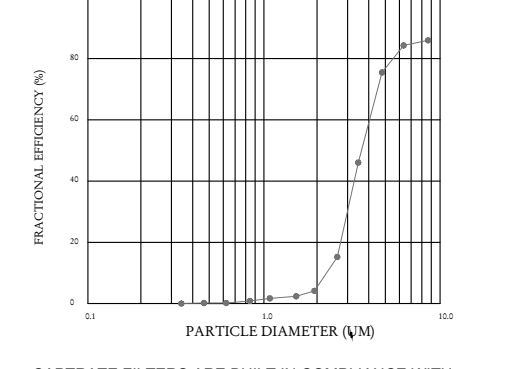
HOOD NO	TAG	OPTION
1	ITEM 33A	FIELD WRAPPER 18.00" HIGH FRONT, LEFT, RIGHT. LEFT QUARTER END PANEL 23" TOP WIDTH, 0" BOTTOM WIDTH, 23" HIGH 430 SS. RIGHT QUARTER END PANEL 23" TOP WIDTH, 0" BOTTOM WIDTH, 23" HIGH 430 SS. FIELD WRAPPER 18.00" HIGH FRONT, LEFT, RIGHT. RIGHT END PANEL 27" TOP WIDTH, 24" BOTTOM WIDTH, 39.5" HIGH 430 SS. LEFT QUARTER END PANEL 23" TOP WIDTH, 0" BOTTOM WIDTH, 23" HIGH 430 SS. RISER SENSOR INSTALL ON PLENUM.
2	ITEM 33B	FIELD WRAPPER 18.00" HIGH FRONT, LEFT, RIGHT.
3	ITEM 75	FIELD WRAPPER 18.00" HIGH FRONT, LEFT, RIGHT.

**PERFORATED SUPPLY PLENUM(S)**

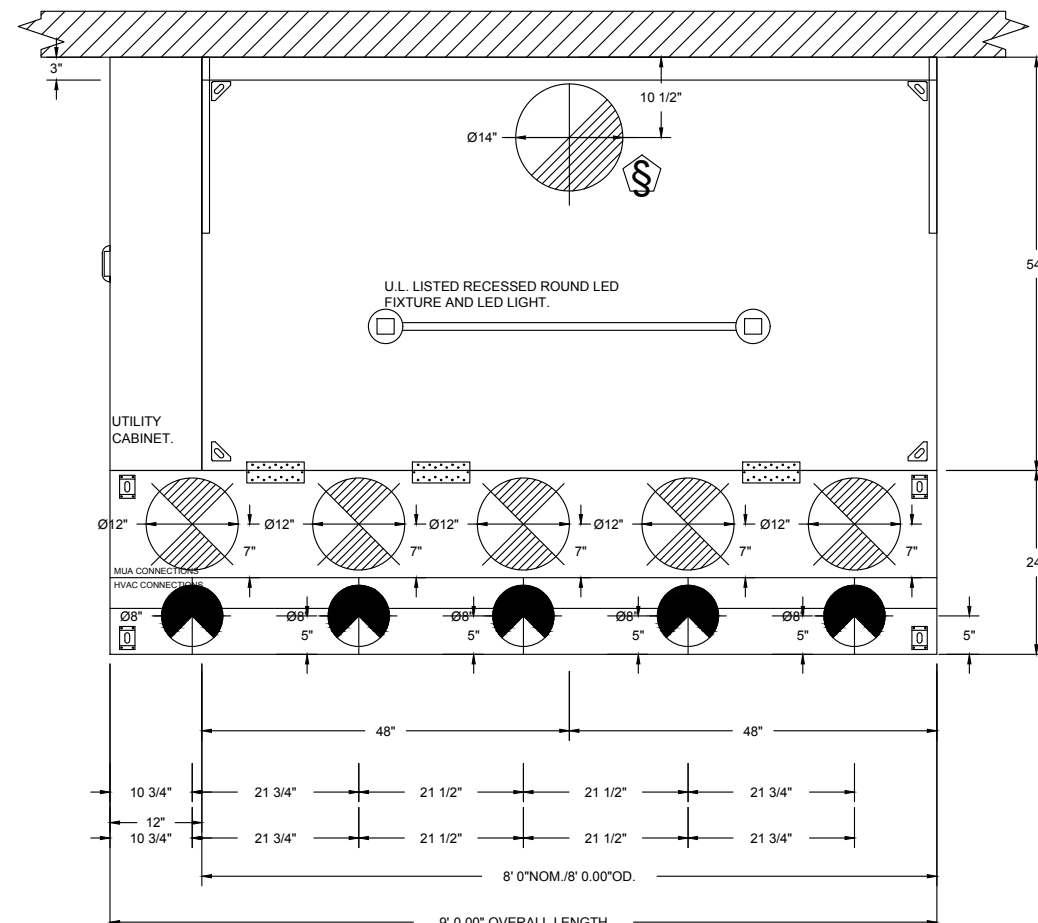
HOOD NO	TAG	POS	LENGTH	WIDTH	HEIGHT	TYPE	RISER(S)		
							WIDTH	LENG	SP
1	ITEM 33A	Front	108"	24"	6"	MUA	12"	256	0.084"
							12"	256	0.084"
							12"	256	0.084"
							12"	256	0.084"
							8"	101	0.033"
							8"	101	0.033"
2	ITEM 33B	Front	60"	22"	6"	MUA	10"	155	0.047"
							10"	155	0.047"
							10"	155	0.047"
							8"	103	0.034"
							8"	103	0.034"
							8"	103	0.034"

**SPECIFICATION: CAPTRATE GREASE-STOP SOLO FILTER**

THE CAPTRATE GREASE-STOP SOLO FILTER IS A SINGLE-STAGE FILTER FEATURING A UNIQUE 5-BAFFLE DESIGN IN CONJUNCTION WITH A SLOTTED REAR BAFFLE DESIGN TO DELIVER EXCEPTIONAL FILTRATION EFFICIENCY.  
FILTER IS STAINLESS STEEL CONSTRUCTION AND SIZED TO FIT INTO STANDARD 2-INCH DEEP HOOD CHANNEL(S).  
UNITS SHALL INCLUDE STAINLESS STEEL HANDLES AND A FASTENING DEVICE TO SECURE THE TWO COMPONENTS WHEN ASSEMBLED.  
GREASE EXTRACTION EFFICIENCY PERFORMANCE SHALL REMOVE AT LEAST 75% OF GREASE PARTICLES FIVE MICRONS IN SIZE, AND 80% GREASE PARTICLES SEVEN MICRONS IN SIZE AND LARGER, WITH A CORRESPONDING PRESSURE DROP NOT TO EXCEED 1.0 INCHES OF WATER GAUGE.  
THE CAPTRATE GREASE-STOP SOLO WAS TESTED TO ASTM STANDARD ASTM F2919-05 MANUFACTURER APPROVED FOR USE IN SOLID FUEL APPLICATIONS AS A SPARK ARRESTER.  
EFFICIENCY VS. PARTICLE DIAMETER  
PRESSURE DROP VS. FLOW RATE

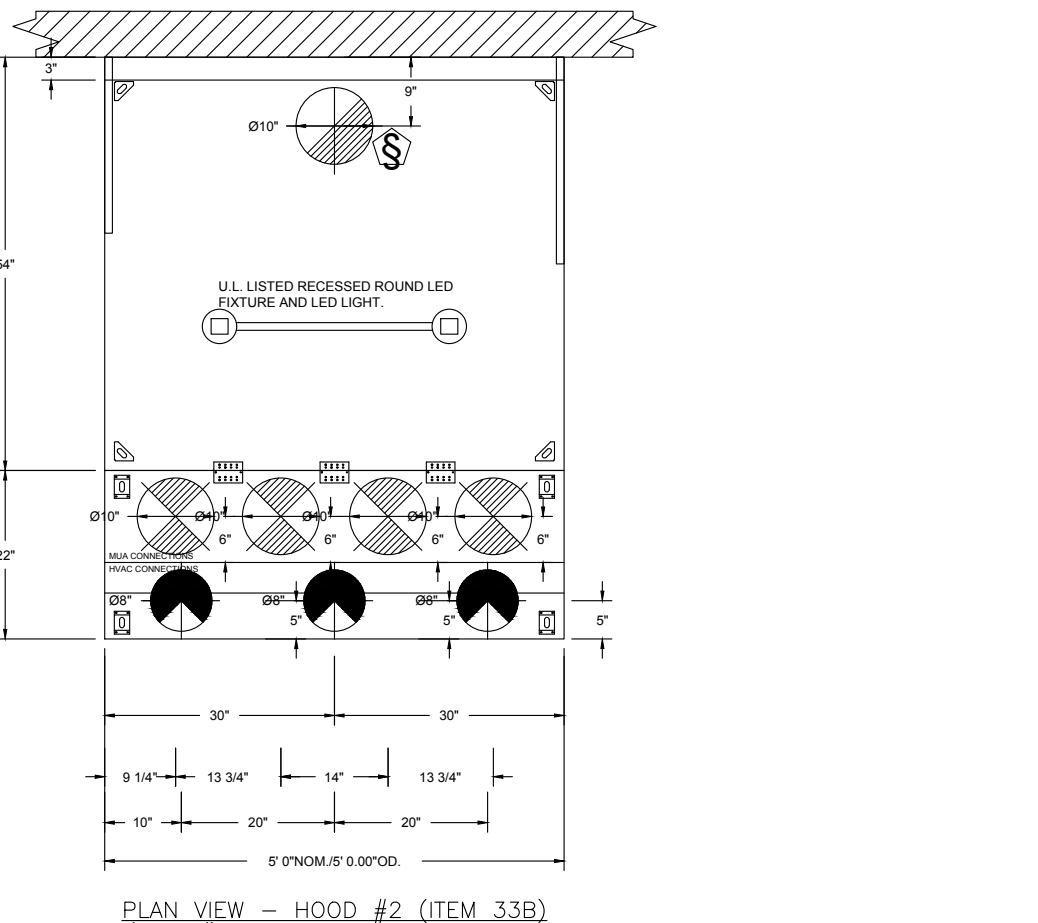


CAPTIVE FILTERS ARE BUILT IN COMPLIANCE WITH:  
NFPA 96  
NFPA 70  
NFPA 70E  
NFPA 70F  
NFPA 70G  
NFPA 70H  
NFPA 70I  
NFPA 70J  
NFPA 70K  
NFPA 70L  
NFPA 70M  
NFPA 70N  
NFPA 70O  
NFPA 70P  
NFPA 70Q  
NFPA 70R  
NFPA 70S  
NFPA 70T  
NFPA 70U  
NFPA 70V  
NFPA 70W  
NFPA 70X  
NFPA 70Y  
NFPA 70Z  
NFPA 70AA  
NFPA 70AB  
NFPA 70AC  
NFPA 70AD  
NFPA 70AE  
NFPA 70AF  
NFPA 70AG  
NFPA 70AH  
NFPA 70AI  
NFPA 70AJ  
NFPA 70AK  
NFPA 70AL  
NFPA 70AM  
NFPA 70AN  
NFPA 70AO  
NFPA 70AP  
NFPA 70AQ  
NFPA 70AR  
NFPA 70AS  
NFPA 70AT  
NFPA 70AU  
NFPA 70AV  
NFPA 70AW  
NFPA 70AX  
NFPA 70AY  
NFPA 70AZ  
NFPA 70BA  
NFPA 70BB  
NFPA 70BC  
NFPA 70BD  
NFPA 70BE  
NFPA 70BF  
NFPA 70BG  
NFPA 70BH  
NFPA 70BI  
NFPA 70BJ  
NFPA 70BK  
NFPA 70BL  
NFPA 70BM  
NFPA 70BN  
NFPA 70BO  
NFPA 70BP  
NFPA 70BQ  
NFPA 70BR  
NFPA 70BS  
NFPA 70BT  
NFPA 70BU  
NFPA 70BV  
NFPA 70BW  
NFPA 70BX  
NFPA 70BY  
NFPA 70BZ  
NFPA 70CA  
NFPA 70CB  
NFPA 70CC  
NFPA 70CD  
NFPA 70CE  
NFPA 70CF  
NFPA 70CG  
NFPA 70CH  
NFPA 70CI  
NFPA 70CJ  
NFPA 70CK  
NFPA 70CL  
NFPA 70CM  
NFPA 70CN  
NFPA 70CO  
NFPA 70CP  
NFPA 70CQ  
NFPA 70CR  
NFPA 70CS  
NFPA 70CT  
NFPA 70CU  
NFPA 70CV  
NFPA 70CW  
NFPA 70CX  
NFPA 70CY  
NFPA 70CZ  
NFPA 70DA  
NFPA 70DB  
NFPA 70DC  
NFPA 70DD  
NFPA 70DE  
NFPA 70DF  
NFPA 70DG  
NFPA 70DH  
NFPA 70DI  
NFPA 70DJ  
NFPA 70DK  
NFPA 70DL  
NFPA 70DM  
NFPA 70DN  
NFPA 70DO  
NFPA 70DP  
NFPA 70DQ  
NFPA 70DR  
NFPA 70DS  
NFPA 70DT  
NFPA 70DU  
NFPA 70DV  
NFPA 70DW  
NFPA 70DX  
NFPA 70DY  
NFPA 70DZ  
NFPA 70EA  
NFPA 70EB  
NFPA 70EC  
NFPA 70ED  
NFPA 70EE  
NFPA 70EF  
NFPA 70EG  
NFPA 70EH  
NFPA 70EI  
NFPA 70EJ  
NFPA 70EK  
NFPA 70EL  
NFPA 70EM  
NFPA 70EN  
NFPA 70EO  
NFPA 70EP  
NFPA 70EQ  
NFPA 70ER  
NFPA 70ES  
NFPA 70ET  
NFPA 70EU  
NFPA 70EV  
NFPA 70EW  
NFPA 70EX  
NFPA 70EY  
NFPA 70EZ  
NFPA 70FA  
NFPA 70FB  
NFPA 70FC  
NFPA 70FD  
NFPA 70FE  
NFPA 70FF  
NFPA 70FG  
NFPA 70FH  
NFPA 70FI  
NFPA 70FJ  
NFPA 70FK  
NFPA 70FL  
NFPA 70FM  
NFPA 70FN  
NFPA 70FO  
NFPA 70FP  
NFPA 70FQ  
NFPA 70FR  
NFPA 70FS  
NFPA 70FT  
NFPA 70FU  
NFPA 70FV  
NFPA 70FW  
NFPA 70FX  
NFPA 70FY  
NFPA 70FZ  
NFPA 70GA  
NFPA 70GB  
NFPA 70GC  
NFPA 70GD  
NFPA 70GE  
NFPA 70GF  
NFPA 70GG  
NFPA 70GH  
NFPA 70GI  
NFPA 70GJ  
NFPA 70GK  
NFPA 70GL  
NFPA 70GM  
NFPA 70GN  
NFPA 70GO  
NFPA 70GP  
NFPA 70GQ  
NFPA 70GR  
NFPA 70GS  
NFPA 70GT  
NFPA 70GU  
NFPA 70GV  
NFPA 70GW  
NFPA 70GX  
NFPA 70GY  
NFPA 70GZ  
NFPA 70HA  
NFPA 70HB  
NFPA 70HC  
NFPA 70HD  
NFPA 70HE  
NFPA 70HF  
NFPA 70HG  
NFPA 70HH  
NFPA 70HI  
NFPA 70HJ  
NFPA 70HK  
NFPA 70HL  
NFPA 70HM  
NFPA 70HN  
NFPA 70HO  
NFPA 70HP  
NFPA 70HQ  
NFPA 70HR  
NFPA 70HS  
NFPA 70HT  
NFPA 70HU  
NFPA 70HV  
NFPA 70HW  
NFPA 70HX  
NFPA 70HY  
NFPA 70HZ  
NFPA 70IA  
NFPA 70IB  
NFPA 70IC  
NFPA 70ID  
NFPA 70IE  
NFPA 70IF  
NFPA 70IG  
NFPA 70IH  
NFPA 70II  
NFPA 70IJ  
NFPA 70IK  
NFPA 70IL  
NFPA 70IM  
NFPA 70IN  
NFPA 70IO  
NFPA 70IP  
NFPA 70IQ  
NFPA 70IR  
NFPA 70IS  
NFPA 70IT  
NFPA 70IU  
NFPA 70IV  
NFPA 70IW  
NFPA 70IX  
NFPA 70IY  
NFPA 70IZ  
NFPA 70JA  
NFPA 70JB  
NFPA 70JC  
NFPA 70JD  
NFPA 70JE  
NFPA 70JF  
NFPA 70JG  
NFPA 70JH  
NFPA 70JI  
NFPA 70JJ  
NFPA 70JK  
NFPA 70JL  
NFPA 70JM  
NFPA 70JN  
NFPA 70JO  
NFPA 70JP  
NFPA 70JQ  
NFPA 70JR  
NFPA 70JS  
NFPA 70JT  
NFPA 70JU  
NFPA 70JV  
NFPA 70JW  
NFPA 70JX  
NFPA 70JY  
NFPA 70JZ  
NFPA 70KA  
NFPA 70KB  
NFPA 70KC  
NFPA 70KD  
NFPA 70KE  
NFPA 70KF  
NFPA 70KG  
NFPA 70KH  
NFPA 70KI  
NFPA 70KJ  
NFPA 70KL  
NFPA 70KM  
NFPA 70KN  
NFPA 70KO  
NFPA 70KP  
NFPA 70KQ  
NFPA 70KR  
NFPA 70KS  
NFPA 70KT  
NFPA 70KU  
NFPA 70KV  
NFPA 70KW  
NFPA 70KX  
NFPA 70KY  
NFPA 70KZ  
NFPA 70LA  
NFPA 70LB  
NFPA 70LC  
NFPA 70LD  
NFPA 70LE  
NFPA 70LF  
NFPA 70LG  
NFPA 70LH  
NFPA 70LI  
NFPA 70LJ  
NFPA 70LK  
NFPA 70LL  
NFPA 70LM  
NFPA 70LN  
NFPA 70LO  
NFPA 70LP  
NFPA 70LQ  
NFPA 70LR  
NFPA 70LS  
NFPA 70LT  
NFPA 70LU  
NFPA 70LV  
NFPA 70LW  
NFPA 70LX  
NFPA 70LY  
NFPA 70LZ  
NFPA 70MA  
NFPA 70MB  
NFPA 70MC  
NFPA 70MD  
NFPA 70ME  
NFPA 70MF  
NFPA 70MG  
NFPA 70MH  
NFPA 70MI  
NFPA 70MJ  
NFPA 70MK  
NFPA 70ML  
NFPA 70MN  
NFPA 70MO  
NFPA 70MP  
NFPA 70MQ  
NFPA 70MR  
NFPA 70MS  
NFPA 70MT  
NFPA 70MU  
NFPA 70MV  
NFPA 70MW  
NFPA 70MX  
NFPA 70MY  
NFPA 70MZ  
NFPA 70NA  
NFPA 70NB  
NFPA 70NC  
NFPA 70ND  
NFPA 70NE  
NFPA 70NF  
NFPA 70NG  
NFPA 70NH  
NFPA 70NI  
NFPA 70NJ  
NFPA 70NK  
NFPA 70NL  
NFPA 70NM  
NFPA 70NN  
NFPA 70NO  
NFPA 70NP  
NFPA 70NQ  
NFPA 70NR  
NFPA 70NS  
NFPA 70NT  
NFPA 70NU  
NFPA 70NV  
NFPA 70NW  
NFPA 70NX  
NFPA 70NY  
NFPA 70NZ  
NFPA 70OA  
NFPA 70OB  
NFPA 70OC  
NFPA 70OD  
NFPA 70OE  
NFPA 70OF  
NFPA 70OG  
NFPA 70OH  
NFPA 70OI  
NFPA 70OJ  
NFPA 70OK  
NFPA 70OL  
NFPA 70OM  
NFPA 70ON  
NFPA 70OO  
NFPA 70OP  
NFPA 70OQ  
NFPA 70OR  
NFPA 70OS  
NFPA 70OT  
NFPA 70OU  
NFPA 70OV  
NFPA 70OW  
NFPA 70OX  
NFPA 70OY  
NFPA 70OZ  
NFPA 70PA  
NFPA 70PB  
NFPA 70PC  
NFPA 70PD  
NFPA 70PE  
NFPA 70PF  
NFPA 70PG  
NFPA 70PH  
NFPA 70PI  
NFPA 70PJ  
NFPA 70PK  
NFPA 70PL  
NFPA 70PM  
NFPA 70PN  
NFPA 70PO  
NFPA 70PP  
NFPA 70PQ  
NFPA 70PR  
NFPA 70PS  
NFPA 70PT  
NFPA 70PU  
NFPA 70PV  
NFPA 70PW  
NFPA 70PX  
NFPA 70PY  
NFPA 70PZ  
NFPA 70QA  
NFPA 70QB  
NFPA 70QC  
NFPA 70QD  
NFPA 70QE  
NFPA 70QF  
NFPA 70QG  
NFPA 70QH  
NFPA 70QI  
NFPA 70QJ  
NFPA 70QK  
NFPA 70QL  
NFPA 70QM  
NFPA 70QN  
NFPA 70QO  
NFPA 70QP  
NFPA 70QQ  
NFPA 70QR  
NFPA 70QS  
NFPA 70QT  
NFPA 70QU  
NFPA 70QV  
NFPA 70QW  
NFPA 70QX  
NFPA 70QY  
NFPA 70QZ  
NFPA 70RA  
NFPA 70RB  
NFPA 70RC  
NFPA 70RD  
NFPA 70RE  
NFPA 70RF  
NFPA 70RG  
NFPA 70RH  
NFPA 70RI  
NFPA 70RJ  
NFPA 70RK  
NFPA 70RL  
NFPA 70RM  
NFPA 70RN  
NFPA 70RO  
NFPA 70RP  
NFPA 70RQ  
NFPA 70RR  
NFPA 70RS  
NFPA 70RT  
NFPA 70RU  
NFPA 70RV  
NFPA 70RW  
NFPA 70RX  
NFPA 70RY  
NFPA 70RZ  
NFPA 70SA  
NFPA 70SB  
NFPA 70SC  
NFPA 70SD  
NFPA 70SE  
NFPA 70SF  
NFPA 70SG  
NFPA 70SH  
NFPA 70SI  
NFPA 70SJ  
NFPA 70SK  
NFPA 70SL  
NFPA 70SM  
NFPA 70SN  
NFPA 70SO  
NFPA 70SP  
NFPA 70SQ  
NFPA 70SR  
NFPA 70SS  
NFPA 70ST  
NFPA 70SU  
NFPA 70SV  
NFPA 70SW  
NFPA 70SX  
NFPA 70SY  
NFPA 70SZ  
NFPA 70TA  
NFPA 70TB  
NFPA 70TC  
NFPA 70TD  
NFPA 70TE  
NFPA 70TF  
NFPA 70TG  
NFPA 70TH  
NFPA 70TI  
NFPA 70TJ  
NFPA 70TK  
NFPA 70TL  
NFPA 70TM  
NFPA 70TN  
NFPA 70TO  
NFPA 70TP  
NFPA 70TQ  
NFPA 70TR  
NFPA 70TS  
NFPA 70TT  
NFPA 70TU  
NFPA 70TV  
NFPA 70TW  
NFPA 70TX  
NFPA 70TY  
NFPA 70TZ  
NFPA 70UA  
NFPA 70UB  
NFPA 70UC  
NFPA 70UD  
NFPA 70UE  
NFPA 70UF  
NFPA 70UG  
NFPA 70UH  
NFPA 70UI  
NFPA 70UJ  
NFPA 70UK  
NFPA 70UL  
NFPA 70UM  
NFPA 70UN  
NFPA 70UO  
NFPA 70UP  
NFPA 70UQ  
NFPA 70UR  
NFPA 70US  
NFPA 70UT  
NFPA 70UU  
NFPA 70UV  
NFPA 70UW  
NFPA 70UX  
NFPA 70UY  
NFPA 70UZ  
NFPA 70VA  
NFPA 70VB  
NFPA 70VC  
NFPA 70VD  
NFPA 70VE  
NFPA 70VF  
NFPA 70VG  
NFPA 70VH  
NFPA 70VI  
NFPA 70VJ  
NFPA 70VK  
NFPA 70VL  
NFPA 70VM  
NFPA 70VN  
NFPA 70VO  
NFPA 70VP  
NFPA 70VQ  
NFPA 70VR  
NFPA 70VS  
NFPA 70VT  
NFPA 70VU  
NFPA 70VV  
NFPA 70VW  
NFPA 70VX  
NFPA 70VY  
NFPA 70VZ  
NFPA 70WA  
NFPA 70WB  
NFPA 70WC  
NFPA 70WD  
NFPA 70WE  
NFPA 70WF  
NFPA 70WG  
NFPA 70WH  
NFPA 70WI  
NFPA 70WJ  
NFPA 70WK  
NFPA 70WL  
NFPA 70WM  
NFPA 70WN  
NFPA 70WO  
NFPA 70WP  
NFPA 70WQ  
NFPA 70WR  
NFPA 70WS  
NFPA 70WT  
NFPA 70WU  
NFPA 70WV  
NFPA 70WW  
NFPA 70WX  
NFPA 70WY  
NFPA 70WZ  
NFPA 70XA  
NFPA 70XB  
NFPA 70XC  
NFPA 70XD  
NFPA 70XE  
NFPA 70XF  
NFPA 70XG  
NFPA 70XH  
NFPA 70XI  
NFPA 70XJ  
NFPA 70XK  
NFPA 70XL  
NFPA 70XM  
NFPA 70XN  
NFPA 70XO  
NFPA 70XP  
NFPA 70XQ  
NFPA 70XR  
NFPA 70XS  
NFPA 70XT  
NFPA 70XU  
NFPA 70XV  
NFPA 70XW  
NFPA 70XX  
NFPA 70XY  
NFPA 70XZ  
NFPA 70YA  
NFPA 70YB  
NFPA 70YC  
NFPA 70YD  
NFPA 70YE  
NFPA 70YF  
NFPA 70YG  
NFPA 70YH  
NFPA 70YI  
NFPA 70YJ  
NFPA 70YK  
NFPA 70YL  
NFPA 70YM  
NFPA 70YN  
NFPA 70YO  
NFPA 70YP  
NFPA 70YQ  
NFPA 70YR  
NFPA 70YS  
NFPA 70YT  
NFPA 70YU  
NFPA 70YV  
NFPA 70YW  
NFPA 70YX  
NFPA 70YY  
NFPA 70YZ  
NFPA 70ZA  
NFPA 70ZB  
NFPA 70ZC  
NFPA 70ZD  
NFPA 70ZE  
NFPA 70ZF  
NFPA 70ZG  
NFPA 70ZH  
NFPA 70ZI  
NFPA 70ZJ  
NFPA 70ZK  
NFPA 70ZL  
NFPA 70ZM  
NFPA 70ZN  
NFPA 70ZO  
NFPA 70ZP  
NFPA 70ZQ  
NFPA 70ZR  
NFPA 70ZS  
NFPA 70ZT  
NFPA 70ZU  
NFPA 70ZV  
NFPA 70ZW  
NFPA 70ZX  
NFPA 70ZY  
NFPA 70ZZ



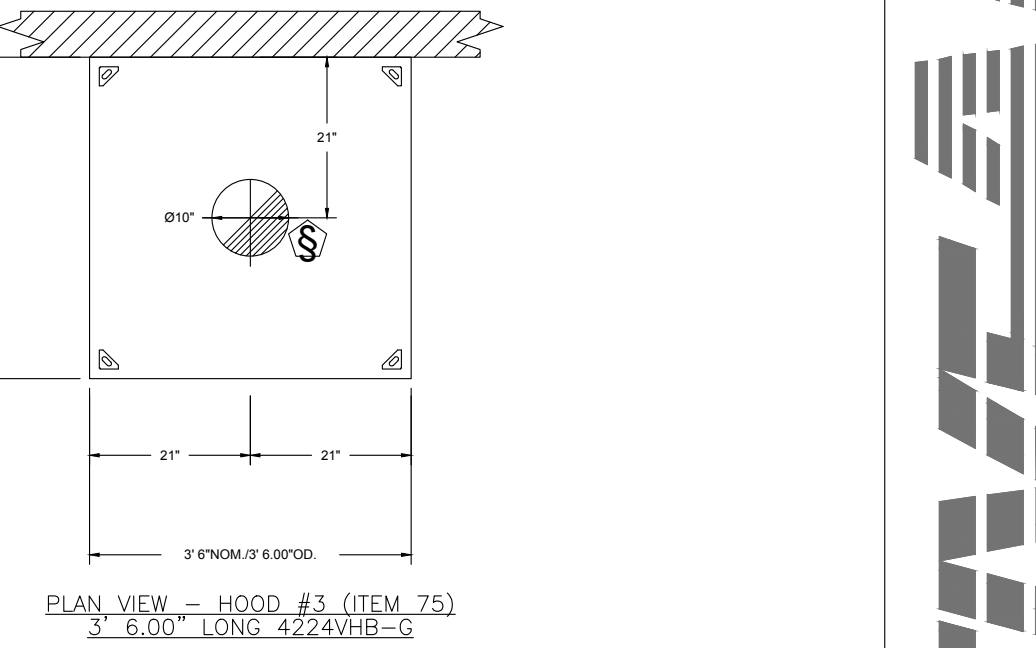
PLAN VIEW - HOOD #1 (ITEM 33A)  
8' 0.00" LONG 5424ND-2-ACPSP-F

ACPSP SHIPS LOOSE FOR FIELD INSTALLATION

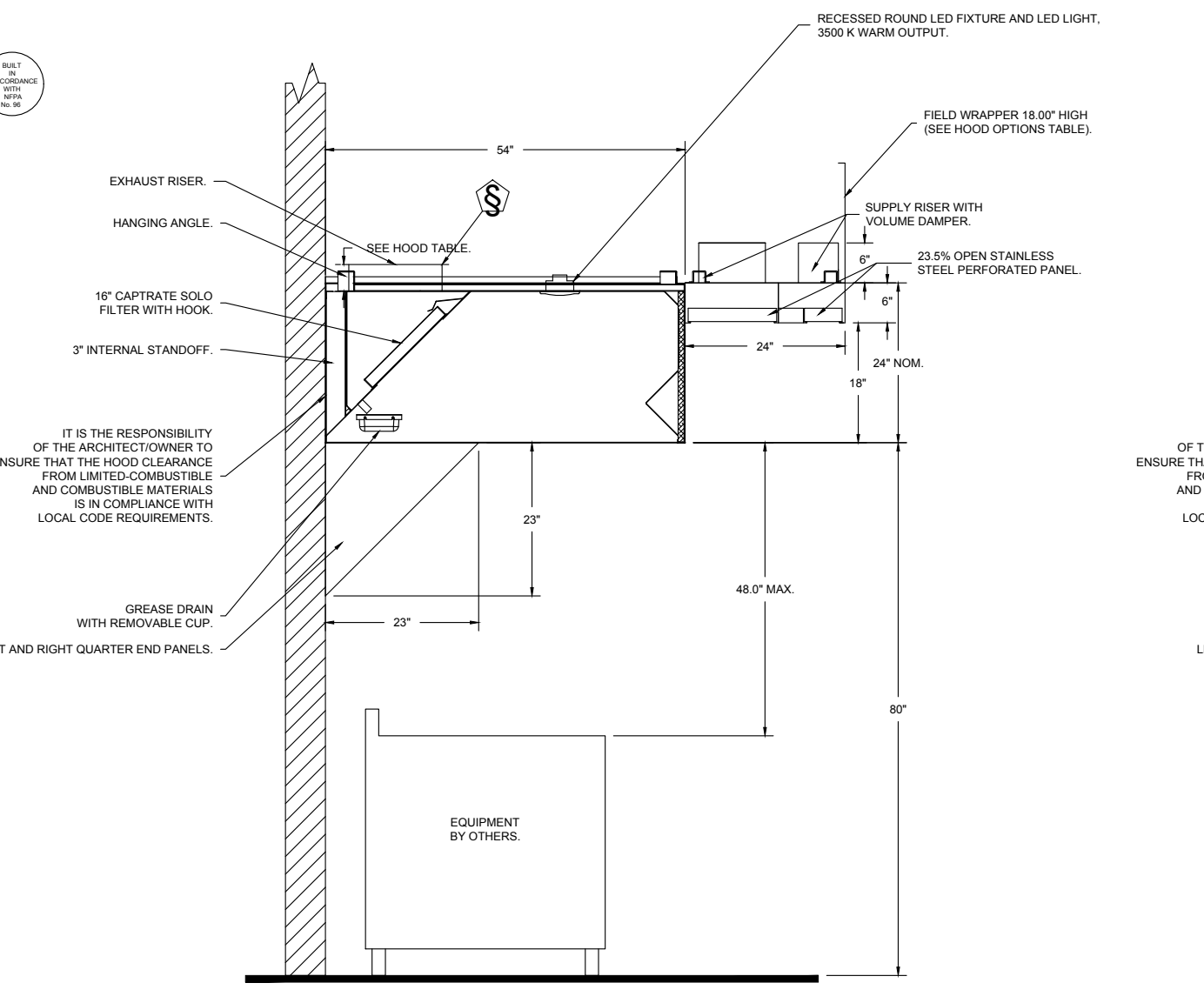


PLAN VIEW - HOOD #2 (ITEM 33B)  
5' 0.00" LONG 5424ND-2-ACPSP-F

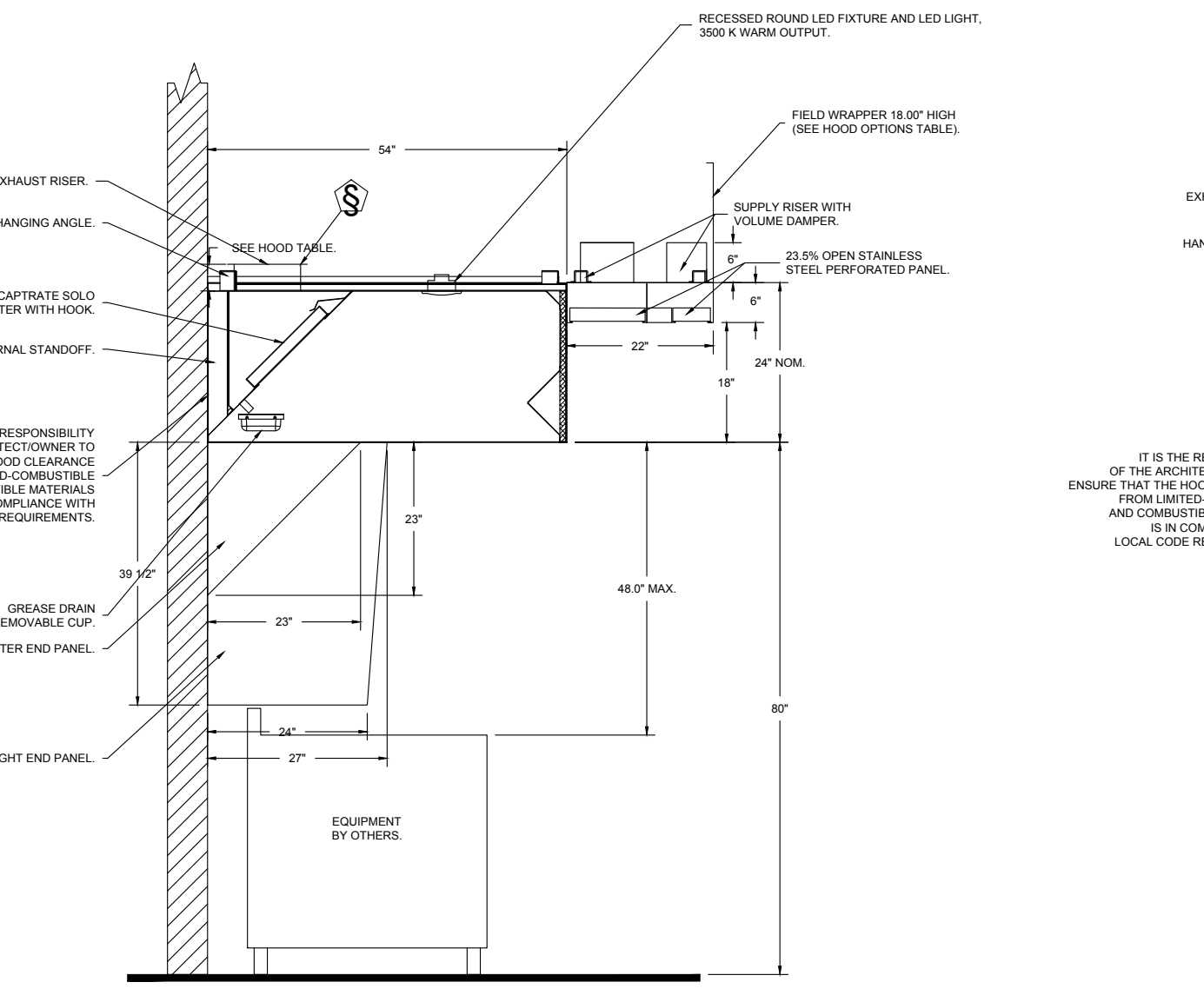
ACPSP SHIPS LOOSE FOR FIELD INSTALLATION



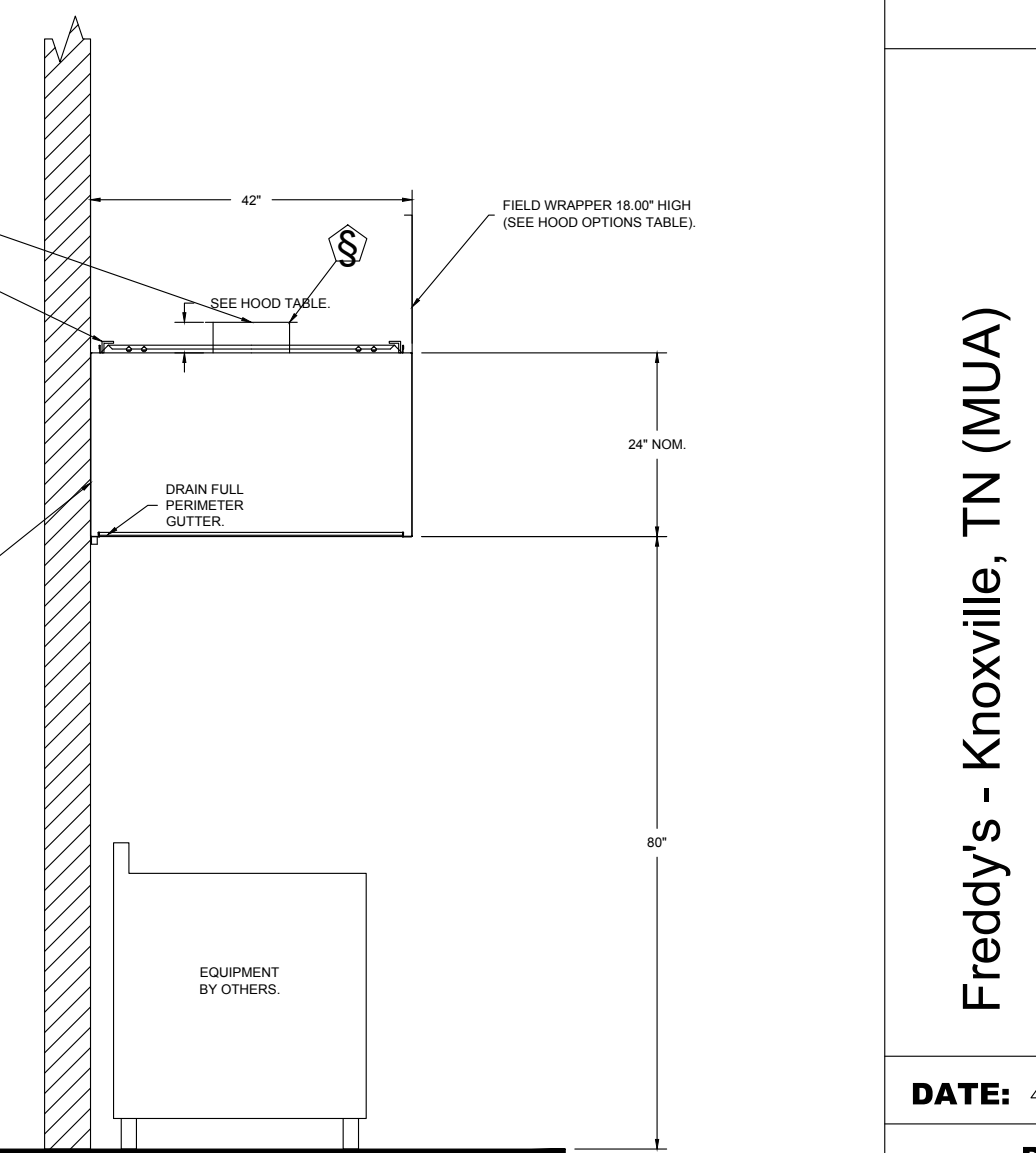
PLAN VIEW - HOOD #3 (ITEM 75)  
3' 6.00" LONG 4224VHB-G



SECTION VIEW - MODEL 5424ND-2-ACPSP-F  
HOOD - #1 (ITEM 33A)



SECTION VIEW - MODEL 5424ND-2-ACPSP-F  
HOOD - #2 (ITEM 33B)



SECTION VIEW - MODEL 4224VHB-G  
HOOD - #3 (ITEM 75)

FOR QUESTIONS, CALL THE:  
KANSAS CITY REGIONAL OFFICE  
1126 SWIFT STREET, KANSAS CITY, MO 64116  
PHONE: (816) 221-8575  
FAX: (816) 221-8311

CUSTOMER APPROVAL TO MANUFACTURE:  
Approved as Noted   
Approved with NO Exception Taken   
Revise and Resubmit   
SIGNATURE \_\_\_\_\_  
Your Title \_\_\_\_\_ Date \_\_\_\_\_

\*\*\* NOTE \*\*\*  
ALL WALLS AND STRUCTURES THAT COME WITHIN 18" OF HOOD MUST BE METAL STUDS AND SHEETROCK. WOOD STUDS OR ANY OTHER COMBUSTIBLE MATERIAL WITHIN 18" OF HOOD NOT ALLOWED.

\*\*\* NOTE \*\*\*  
HOOD MANUFACTURER RECOMMENDS NO RETURNS OR 4-WAY DIFFUSERS WITHIN 10 FEET OF HOOD IN ALL DIRECTIONS.

\*\*\* NOTE \*\*\*  
MAKEUP AIR SHALL BE DELIVERED INTO SPACE IN MANNER THAT WILL NOT DISRUPT HOODS ABILITY TO CAPTURE AND CONTAIN.

**REVISIONS**





