

**ROOFTOP UNIT SCHEDULE ELEVATION 249 FT., 100 DEG. F./65 DEG. F., 31 DEG. F.**

TYPE	NO.	MANUFACTURER	MODEL NO.	AREA SERVED	MIN. OA CFM	MAX. OA CFM	TOTAL CFM	ESP IN W.G.	FAN HP	HEATING INPUT MBH	HEATING OUTPUT MBH	NOM. TONS	TOTAL MBH	SENS MBH	EAT (DB/WB)	NO. COMP.	VOLTS	PHASE	HERTZ	MOCP	MCA	EQUIP EER	OPER. WEIGHT (LBS.)	NOTES
RT	1	TRANE	YHC120F3	RETAIL	580	3600	3600	0.5	2.75	150.0	110.4	10	105.0	99.2	80/62	2	208	3	60	60	48	12.4	1608	ALL NOTES
RT	2	TRANE	YHC120F3	RETAIL	580	3600	3600	0.5	2.75	150.0	110.4	10	105.0	99.2	80/62	2	208	3	60	60	48	12.4	1608	ALL NOTES
RT	3	TRANE	YHC074F3	MULTI-PURPOSE	300	2400	2400	0.5	2.75	80.0	64.8	6	68.0	65.5	80/62	2	208	3	60	50	37	13.1	1408	ALL NOTES

NOTES: 1. ROOFTOP COOLING LOADS ARE SIZED AT 105 DEG F DB AMBIENT 75 DEG F DB/61 DEG F WB.  
 2. PROVIDE ROOFTOP UNITS WITH 18" CURB, DRY BULB ECONOMIZER WITH SIMULTANEOUS DX COOLING, 120V OUTLET, DISCONNECT AND HAIL GUARD.  
 3. APPROVED MANUFACTURER: TRANE ONLY. CALL ANDREW ALLEN @ 208-401-6197.  
 4. SMOKE DETECTORS SHALL BE PROVIDED AND INSTALLED IN THE MAIN SUPPLY DUCT WHEN HVAC EQUIPMENT EXCEEDS 2000 CFM. THE AIR DUCT SMOKE DETECTOR SHALL BE A SYSTEM SENSOR. CONNECT SMOKE DETECTOR TO BUILDING FIRE ALARM SYSTEM. INNOVAIRFLEX D4120 PHOTOELECTRIC DUCT SMOKE DETECTOR. (WITH REMOTE TEST & RESET SWITCH RTS2-AOS AUDIBLE / VISUAL KEY STATION) & WIRED BY MECHANICAL CONTRACTOR. PER 2022 CMC.  
 5. MECHANICAL CONTRACTOR TO PROVIDE AND INSTALL BAROMETRIC RELIEF DAMPER IN THE RETURN DUCT AND WEATHER HOOD.  
 6. ROOFTOP UNIT SHALL BE R410A AND 2 STAGE HEATING.  
 7. INSTALL CONDENSATE OVERFLOW SWITCH IN SECONDARY OVERFLOW DRAIN TO DETECT PRIMARY DRAIN IS PLUGGED AND SHUT DOWN UNIT. PROVIDE SAFT-T-SWITCH MODEL SS3. (SEE DETAIL 1/M-2.0). (ROOFTOP MANUFACTURER OPTION)  
 8. LOW LEAK DAMPERS IN ROOFTOP UNIT WHEN REQUIRED BY CITY.  
 9. PROVIDE MERV 13 FILTERS.  
 10. ROOFTOP UNITS SHALL BE SECURED BY SEISMIC RATED 2" CLIPS IN ACCORDANCE WITH THE IBC SEISMIC REQUIREMENTS FOR SEISMIC DESIGN CATEGORY 3 & 4. SEE DETAIL 6/M-D1.

**GENERAL NOTES**

- THE ARCHITECTURAL, STRUCTURAL, PLUMBING AND ELECTRICAL DRAWINGS AND OTHER RELATED DOCUMENTS SHALL BE CONSIDERED A PART OF THE MECHANICAL CONTRACT, AS FAR AS THEY APPLY TO THE MECHANICAL SYSTEMS, AS IF REFERRED TO IN FULL.
- ALL FIELD CONDITIONS AND JOB SITE DIMENSIONS ARE TO BE VERIFIED PRIOR TO COMMENCEMENT OF WORK.
- ALL CONSTRUCTION WORK SHALL BE PERFORMED IN STRICT ACCORDANCE WITH ALL APPLICABLE BUILDING CODES 2022. CALIFORNIA T-24, CMC, CPC, CEC, CGBC.
- ALL DUCTWORK SHALL BE CONSTRUCTED IN ACCORDANCE WITH CMC CHAPTER 6.
- HVAC CONTRACTOR SHALL BE RESPONSIBLE FOR ALL CUTTING & PATCHING OF ANY WALLS, ROOF, OR FLOOR DURING CONSTRUCTION OF PROJECT FOR MECHANICAL EQUIPMENT.
- COORDINATE ALL SUPPLY AIR DIFFUSERS, EXHAUST GRILLES, AND RETURN AIR GRILLES WITH ARCHITECTURAL REFLECTED CEILING PLAN AND WITH ELECTRICAL LIGHT FIXTURES.
- ALL TRANSVERSE JOINTS SHALL BE SEALED WITH HARDCAST DUCT SEAL 321.
- ALL SUPPLY & RETURN AIR DUCTWORK TO BE LINED INSULATED WITH 1" THICK 3/4 LBS. R-4 DENSITY FIBERGLASS IN CONDITIONED SPACE AND 1-1/2" THICK 1 LBS R-6 IN UNCONDITIONED SPACE.
- ALL DIMENSIONS ARE NET INTERNAL.
- MANUAL VOLUME DAMPERS ARE TO BE PROVIDED IN ALL BRANCH LINES. DAMPERS SHALL HAVE LOCKING QUADRANTS. TYPICAL OF DURODYNE MODEL SPEC SEAL/QUAD SEAL.
- THE LOCATION OF ALL PENETRATIONS SHALL BE COORDINATED WITH ARCHITECTURAL AND STRUCTURAL DRAWINGS.
- MECHANICAL CONTRACTOR SHALL PROVIDE 6" LEVELING PLATFORM AND CURBS FOR AC UNITS AND ALL NECESSARY MECHANICAL ROOF EQUIPMENT.
- REFER TO ELECTRICAL PLANS FOR LOCATIONS & MOUNTING HEIGHT OF THERMOSTATS FOR ROOFTOP UNITS.
- PLUMBING CONTRACTOR TO PROVIDE CONDENSATE DRAINS TO CODE APPROVED RECEPTACLES.
- ALL FIELD CONDITIONS AND DIMENSIONS SHOWN ON THE DRAWINGS SHALL BE VERIFIED PRIOR TO SUBMITTING BIDS. NO ALLOWANCE WILL BE MADE FOR NOT COMPLYING WITH THIS REQUIREMENT.
- RIGID CONTACT BETWEEN CONDUIT, PIPES, CEILING, WIRES, AND DUCTWORK WILL NOT BE ALLOWED.
- ROOFTOP UNIT THERMOSTATS & SENSORS SHALL BE SUPPLIED WITH MECHANICAL EQUIPMENT. INSTALLED BY MECHANICAL CONTRACTOR AND FINAL CONNECTIONS BY MECHANICAL CONTRACTOR.
- ALL MECHANICAL EQUIPMENT SHALL BE FURNISHED WITH MAINTENANCE MANUALS, SCHEDULES, TAGS AND LETTER OF GUARANTEE IN A BINDER (THREE) WITH TABS, AS PER SPECIFICATION BOOK SECTION 01700.
- PROVIDE AIR BALANCE REPORT. BALANCER SHALL BE NEBB CERTIFIED. THE TYPE II HOOD AND SUPPLY AIR SHALL BE BALANCED FOR BUILDING PRESSURIZATION. SEE AIR BALANCE THIS SHEET.
- CITY INSPECTOR SHALL BE PRESENT TO VERIFY WHEN THE HOOD REQUIRED PERFORMANCE TEST IS PERFORMED.

**AIR BALANCE SCHEDULE**

MARK	SUPPLY AIR	RETURN AIR	OUTSIDE AIR	EXHAUST AIR	RESULTING PRESSURE
RT-1	3600	3020	580		+580
RT-2	3600	3020	580		+580
RT-3	2400	2100	300		+300
EF-1				-420	-420
EF-2				-420	-420
EF-3	(TYPE II HOOD)			-800	-800
TOTAL			+1640	-1640	0

**OUTDOOR AIR VENTILATION SCHEDULE**

ZONE IDENTIFICATION		2022 CMC SECTION 402 VERIFICATION RATE PROCEDURE										DESIGN CASE			
AREA NAME	OCCUPANCY CLASSIFICATION	AREA (sq. ft.) (Az)	AREA OUTDOOR AIR RATE (Ra)	AREA OUTDOOR AIR (Ra*Az)	OCCUPANT LOAD RATE (PEOPLE/1000 sq.ft.) (Pz)	OCCUPANCY (1/4" PEOPLE) RATE (Rp)	OCCUPANT OUTDOOR AIR (Rp*Pz)	BREATHING ZONE OUTDOOR AIR (Vbz=Rp*Pz+Ra*Az)	ZONE AIR DISTRIBUTION EFFECTIVENESS (Ez)	ZONE OUTDOOR AIR (Voz=Vbz/Ez)	SUPPLY AIR (CFM)	OUTDOOR AIR RATIO (%)	OUTDOOR AIR DESIGN (CFM)	UNIT	
RETAIL	SALES	2110	0.12	253	15	32	7.5	240	493	0.8	616	2200	19.3	425	RTU-1
											2200	19.3	425	RTU-2	
PREP KITCHEN	KITCHEN	496	0.12	60	20	2	7.5	15	75	0.8	94	800	19.3	155	RTU-1
											800	19.3	155	RTU-2	
OFFICE	OFFICE	79	0.06	5	5	1	5.0	5	10	0.8	13	150	19.3	29	RTU-3

**EXHAUST FAN SCHEDULE**

TYPE	NO.	MANUFACTURER	Model	CFM	S.P.	H.P.	VOLTAGE	PHASE	WEIGHT (LBS.)	NOTES
EF	1	GREENHECK	CUBE-090	420	0.25	1/15	120 V	1	34	5
EF	2	GREENHECK	CUBE-090	420	0.25	1/15	120 V	1	34	5
EF	3	GREENHECK	CUBE-095	800	0.25	1/15	120 V	1	36	2, 5

NOTES: 1. CONTROLLED BY WALL SWITCH.  
 2. HINGED CURB TO CLEAN OUT HOOD DUCT.  
 3. PROVIDE COOLING WALL STAT.  
 4. FAN OUTLET 30" ABOVE ROOF.  
 5. PROVIDE CURB, DISCONNECT, GRAVITY DAMPER, ECM DIRECT DRIVE MOTOR, W/MOTOR MOUNT & SPEED CONTROL  
 6. WITH ROOF VENT.

**AIR DEVICE SCHEDULE**

MARK	QUANTITY	NECK SIZE	TYPE	DUTY	MANUF.	MODEL	NOTES
B	1	10 X 10	LAY-IN	SUPPLY	TITUS	300 RL	
C	4	10 X 10	HARD	SUPPLY	TITUS	272 RL	
D	10	12 X 12	HARD	SUPPLY	TITUS	272 RL	
E	4	10 X 10	LAY-IN	SUPPLY	TITUS	300 FL	
G	3	8 X 8	WALL	TRANSFER/RETURN	TITUS	350 RL	
H	1	8 X 8	LAY-IN	TRANSFER	TITUS	350 RL	
J	2	12 X 12	HARD	EXHAUST	TITUS	50 F	
L	1	24 X 24	LAY-IN	RETURN	TITUS	350 FL	
M	2	12 X 12	LAY-IN	SUPPLY	TITUS	300 FL	
N	2	42 X 18	WALL	RETURN	TITUS	350 RL	1

NOTES: 1. INSTALL RETURN GRILLE UPSIDE DOWN. (FINS ANGLE UP.)

**SMOKE DETECTOR MECHANICAL NOTES**

A.\*\*\*\*COMPLIANCE WITH THE 2022 CMC REQUIREMENT SECT. 609 (PREVIOUSLY SECT. 608) SHALL BE MET FOR AIR HANDLING UNITS (AHU) / AIR MOVING SYSTEM GLOBAL / AGGREGATE SIMULTANEOUS SMOKE SHUTDOWN OF AREA SERVED PER CSFM INTERPRETATION #02-024 & 08-065 UPON ACTIVATION OF ANY SINGLE DUCT SMOKE DETECTOR.\*  
 AND  
 B.\*\*\*\*ALL AHU / HVAC UNIT DUCT-SMOKE DETECTORS SHALL BE CONNECTED TO BUILDING FIRE ALARM PANEL TO INITIATE A SUPERVISORY SIGNAL UPON ACTIVATION, BE INTERCONNECTED AND SHALL SHUT DOWN ALL UNITS SIMULTANEOUSLY UPON ACTIVATION OF ANY ONE SINGLE DETECTOR.\*  
 AND  
 C.\*\*\*\*ALL AHU / HVAC UNIT DUCT-SMOKE DETECTORS SHALL BE TESTED BY CALIBRATED MANOMETER PROVIDED BY THE INSTALLING CONTRACTOR TO INSURE AIR VOLUME AND VELOCITIES ARE WITHIN THE TOLERANCE SPECIFICATIONS OF THE RATINGS REQUIRED BY THE MANUFACTURER'S DATA ON EACH DUCT-SMOKE DETECTOR INSTALLED WITHIN THE UNIT / DUCTWORK.  
 PER 2022 CFC SECT. 907.3.1, 2016 NFPA 72 SECT. 17.7.4 & 2022 CMC SECT. 609.

**FFKR ARCHITECTS**  
 730 Pacific Avenue - Salt Lake City, Utah 84104  
 801.521.6186 • FFKR.COM

**NEA**  
 National Electrical Contractors Association  
 1100 15th St NW  
 Washington, DC 20004  
 202.775.2200  
 www.necanet.org

**MAVERIK**

**MAVERIK**  
 SUNSET BLVD. & LONETREE BLVD.  
 ROCKLIN, CA  
 CD SET 7/10/2023

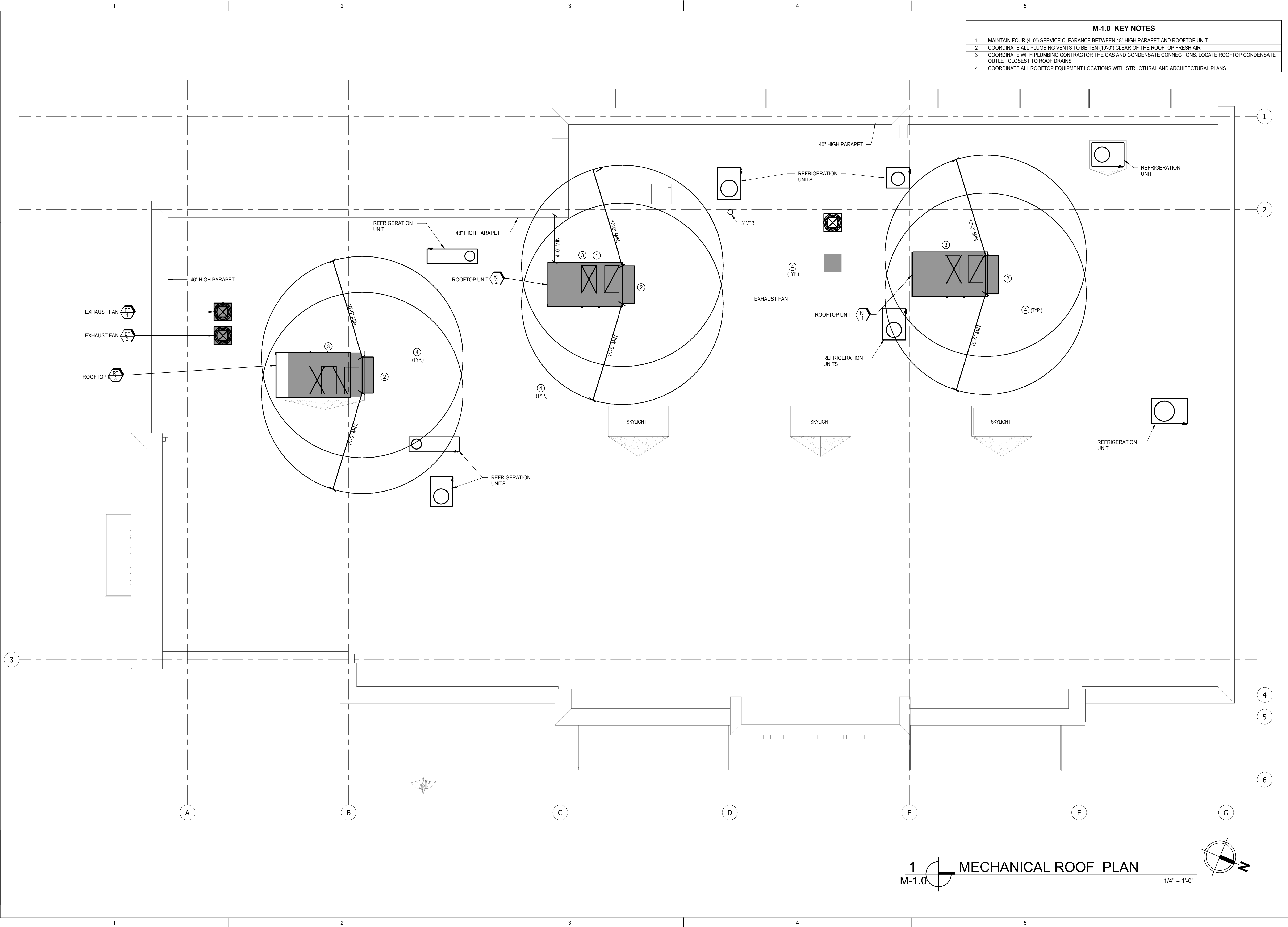


DATE	REVISION
2-5-21	Plan Updates
4-6-21	Owner Updates
11-5-12-23	Owner Updates

PROJECT NUMBER 19337

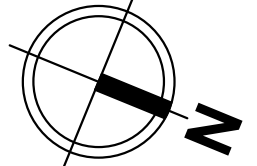
**MECHANICAL SCHEDULES & NOTES**

7/20/2023 1:53:04 PM



M-1.0 KEY NOTES	
1	MAINTAIN FOUR (4'-0") SERVICE CLEARANCE BETWEEN 48" HIGH PARAPET AND ROOFTOP UNIT.
2	COORDINATE ALL PLUMBING VENTS TO BE TEN (10'-0") CLEAR OF THE ROOFTOP FRESH AIR.
3	COORDINATE WITH PLUMBING CONTRACTOR THE GAS AND CONDENSATE CONNECTIONS. LOCATE ROOFTOP CONDENSATE OUTLET CLOSEST TO ROOF DRAINS.
4	COORDINATE ALL ROOFTOP EQUIPMENT LOCATIONS WITH STRUCTURAL AND ARCHITECTURAL PLANS.

1 MECHANICAL ROOF PLAN  
M-1.0 1/4" = 1'-0"



**FFKR ARCHITECTS**  
730 Pacific Avenue - Salt Lake City, Utah 84104  
801.521.6186 • FFKR.COM

**MAVERIK**  
Maverik Engineering, Inc.  
Professional Engineer  
No. M 025798  
MECHANICAL  
STATE OF CALIFORNIA



**MAVERIK**  
SUNSET BLVD. & LONETREE BLVD.  
ROCKLIN, CA  
CD SET 7/10/2023



DATE	REVISION
5-6-22	

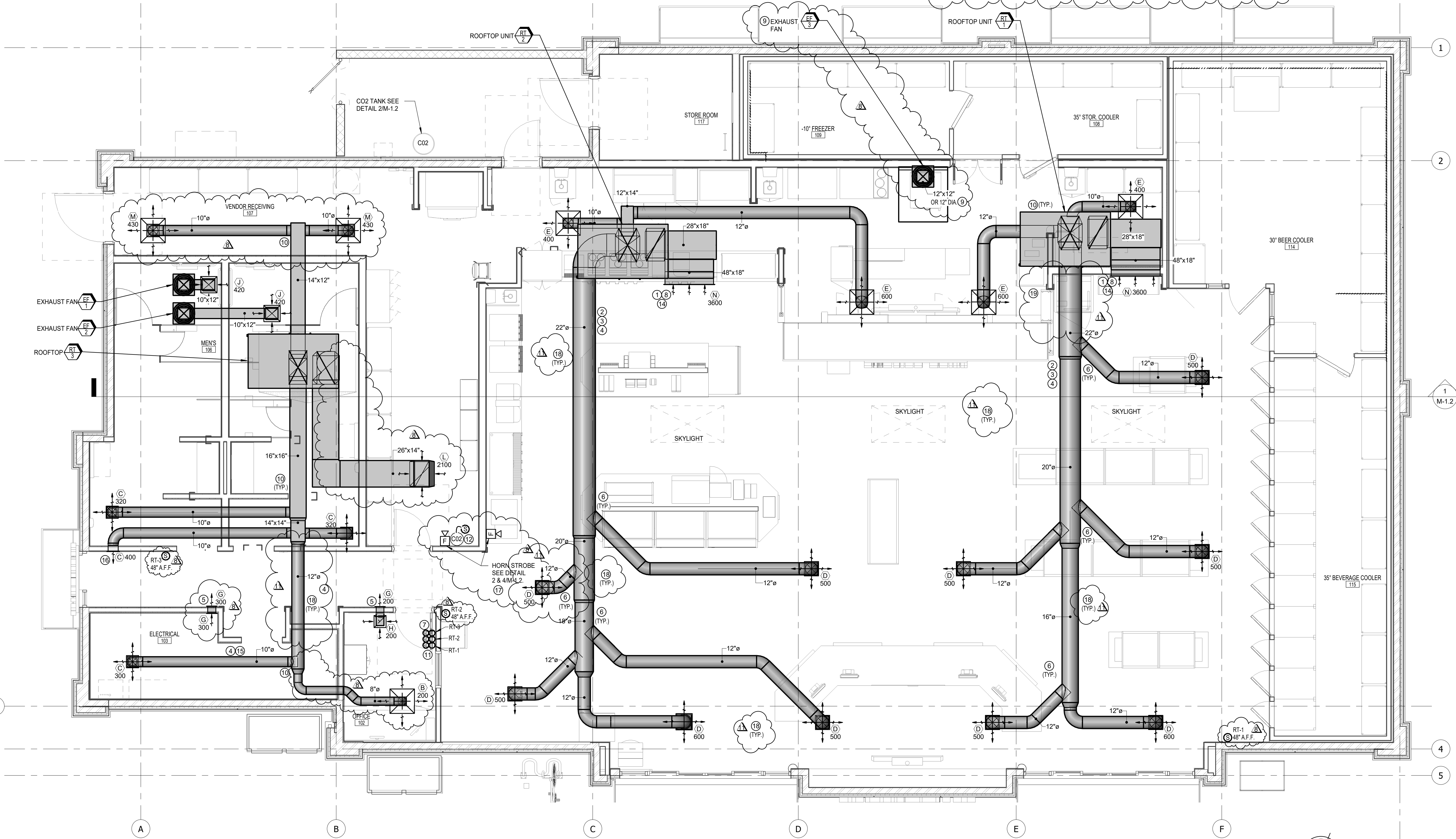
PROJECT NUMBER 19337

**MECHANICAL ROOF PLAN**

M-1.0

7/20/2023 1:53:12 PM

- M-1.1 KEY NOTES**
- 1 MOUNT TOP OF RETURN GRILLE AS HIGH AS POSSIBLE BELOW ROOF DECK AND BETWEEN TRUSSES
  - 2 MAIN SUPPLY DUCTS SHALL BE DOUBLE WALL LINED DUCT WITH 1" (R-4.2) LINER & PERFORATED INSIDE DUCT (K-27). ALL BRANCH DUCTS ARE UNLINED DUCTWORK.
  - 3 INSTALL EXPOSED SUPPLY DUCTWORK CENTERED BETWEEN TRUSS AND ROUTE BRANCH DUCTS THRU TRUSS WEB OPENINGS. INSTALL SUPPLY REGISTER AT BOTTOM CHORD OF TRUSS.
  - 4 DUCTWORK SHALL BE PAINTLOCK OR PRIMED FOR PAINTING.
  - 5 PROVIDE 8 X 8 DUCT SLEEVE OPENING AT TRUSS ELEVATION FOR RETURN AIR. INSTALL TRANSFER GRILLE FINS ANGLED UPWARD.
  - 6 INSTALL BALANCE DAMPER ON TOP OF DUCT TO HIDE FROM PUBLIC EYE.
  - 7 LOCATE THERMOSTATS IN OFFICE. COORDINATE LOCATION WITH CONTRACTOR.
  - 8 RETURN DUCT SHALL BE INSULATED PER SPECIFICATION WITH 1" (R-5.0) LINER.
  - 9 EXHAUST DUCT SHALL BE ALUMINUM. FOLLOW SMACNA STANDARDS FOR GAUGE. PROVIDE DUCT CLEANOUT ON HOOD EXHAUST DUCT AT EACH CHANGE IN DIRECTION PER UMC 510.3 & 507.1.3
  - 10 INSTALL BALANCING DAMPER ON EACH BRANCH DUCT TAKE-OFF.
  - 11 INSTALL TEST AND RESET SWITCH ON WALL INSIDE OFFICE.
  - 12 INSTALL CO2 DETECTOR ON THE WALL AND SENSORS 12" ABOVE THE BAG AND THE BOX FLOOR. (INSTALL CO2 EQUIPMENT PER MANUFACTURER'S INSTALLATION MANUAL & DETECTOR HEIGHT.)
  - 14 LOCATE RETURN GRILLE CENTERED BETWEEN ROOF TRUSS. TURN RETURN GRILLES UPSIDE DOWN.
  - 15 INSTALL SUPPLY DUCT IN CENTER OF ELECTRICAL ROOM 36" CLEAR OF PANELS AND 6'-0" ABOVE PANELS
  - 16 AIM GRILLE BLADES DOWNWARD
  - 17 PROVIDE REMOVE HORN/STROBE FOR CO2 DETECTION SYSTEM AT 11'-0" A.F.F. AND 12" FROM THE END OF THE WALL.
  - 18 INSTALL ALL SUPPLY DUCT SHALL BE INSTALLED AS TIGHT AS POSSIBLE TO ROOF DECKING
  - 19 INSTALL MAIN SUPPLY DUCT FROM RT-1 AS TIGHT AS POSSIBLE TO ROOF TRUSS TO BE ABLE TO INSTALL WALLPAPER



**1 MECHANICAL FLOOR PLAN**  
M-1.1  
1/4" = 1'-0"

**FFKR ARCHITECTS**  
730 Pacific Avenue • Salt Lake City, Utah 84104  
O 801.521.6186 • FFKR.COM



**MAVERIK**  
SUNSET BLVD. & LONETREE BLVD.  
ROCKLIN, CA  
CD SET 7/10/2023



DATE	REVISION
8 5-6-22	Owner Updates
11 5-12-23	Owner Updates

PROJECT NUMBER 19337

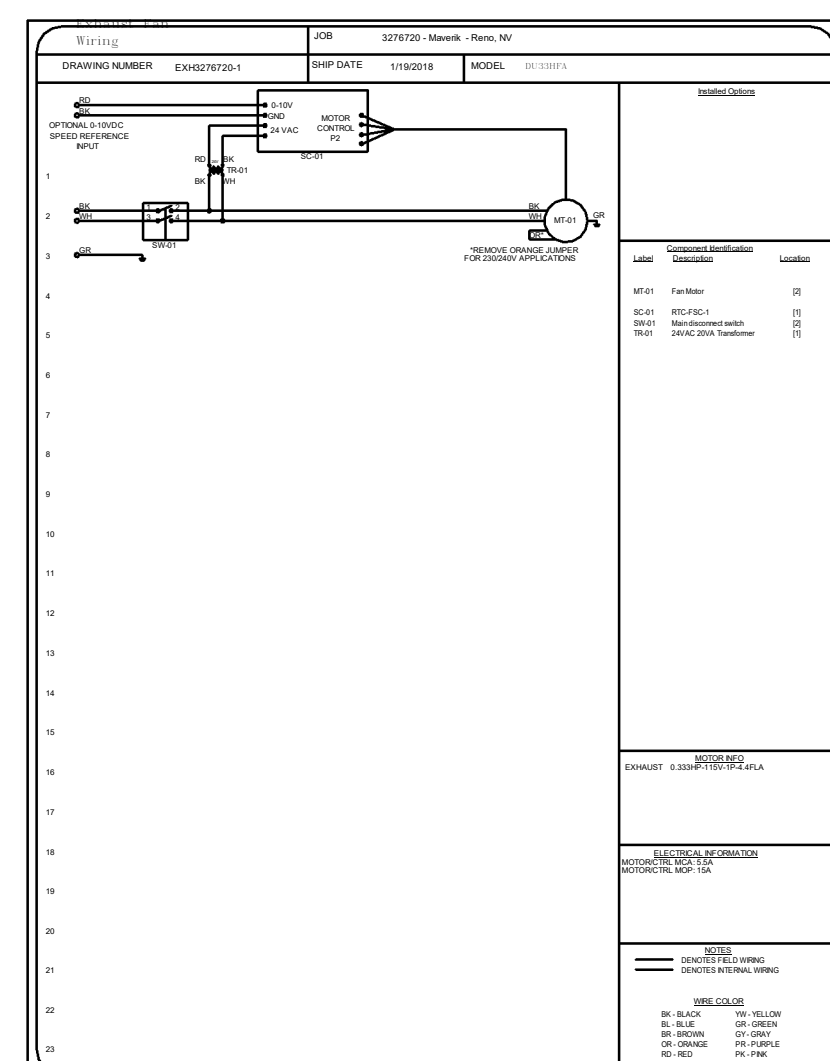
**MECHANICAL FLOOR PLAN**

M-1.1



7/20/2023 1:53:24 PM

1 2 3 4 5



NO.	QTY	DESCRIPTION	UNIT
1	1	WIRING KIT	1

**QUESTIONS CONTAIN**

ERIC-HOMES  
 2845 E. Rockwood Blvd., Suite 5  
 Rocklin, UT 84108  
 PHONE: (801) 875-3277  
 SERVICE: (888) 754-6900

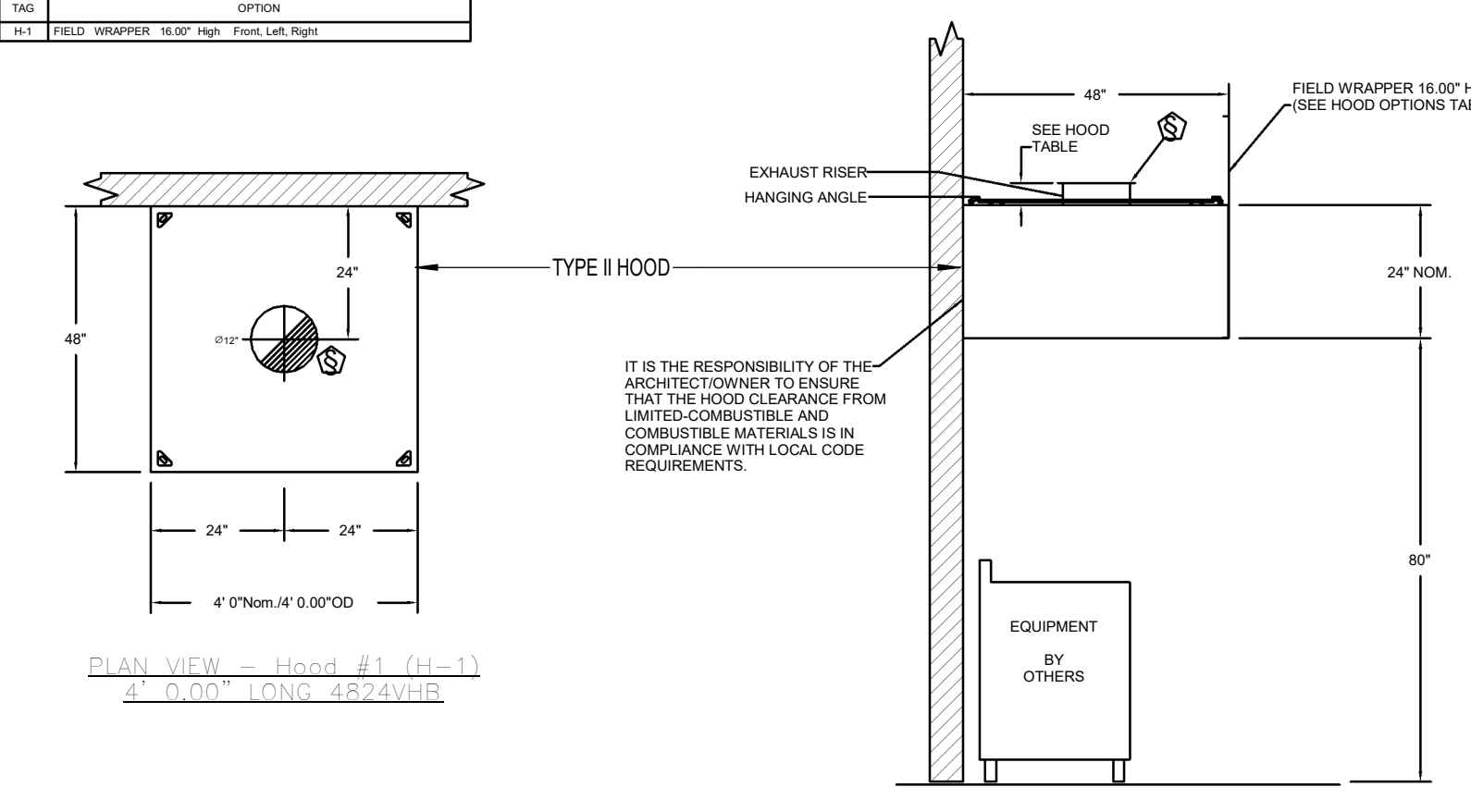
Maverik - ROCKLIN, CALIFORNIA  
 ROCKLIN, CA  
 10-13-2020 19337  
 3 3/8" x 1'-0"

HOOD NO.	TAG	MODEL	LENGTH	WIDTH	DEPTH	DA	CVFA	VEL.	CFM	HOOD CONSTRUCTION	END TO END	HOW
1	HL-1	VHB	4'-0"	24"	18"	10"	1019	0.110"	301.55	100%	ALONE	ALONE

HOOD NO.	TAG	TYPE	QTY	HEIGHT	DEPTH	DA	CVFA	VEL.	CFM	HOOD CONSTRUCTION	END TO END	HOW
1	HL-1	TYPE II	1	24"	18"	10"	1019	0.110"	301.55	100%	ALONE	ALONE

**HOOD - H-1**

OPTION



IT IS THE RESPONSIBILITY OF THE ARCHITECT/OWNER TO ENSURE THAT THE HOOD CLEARANCE FROM LIMITED-COMBUSTIBLE AND COMBUSTIBLE MATERIALS IS IN COMPLIANCE WITH LOCAL CODE REQUIREMENTS.

**SECTION VIEW - MODEL 4R24VHR HOOD - H-1**

**PLAN VIEW - Hood #1 (H-1)**  
 2' 0.00" LONG 4R24VHR

**QUESTIONS CONTAIN**

ERIC-HOMES  
 2845 E. Rockwood Blvd., Suite 5  
 Rocklin, UT 84108  
 PHONE: (801) 875-3277  
 SERVICE: (888) 754-6900

Maverik - ROCKLIN, CALIFORNIA  
 ROCKLIN, CA  
 10-13-2020 19337  
 1 3/8" x 1'-0"

FAN NO.	TAG	FAN UNIT MODEL #	CFM	ESP	RPM	HP	W.P.	Q	VOLT	FLA	DISCHARGE VELOCITY	WEIGHT (LBS)	NOISE
1	DU33HEA		300	0.300	1400	0.300	0.070	1	115	4.4	200 FPM	18	10.8

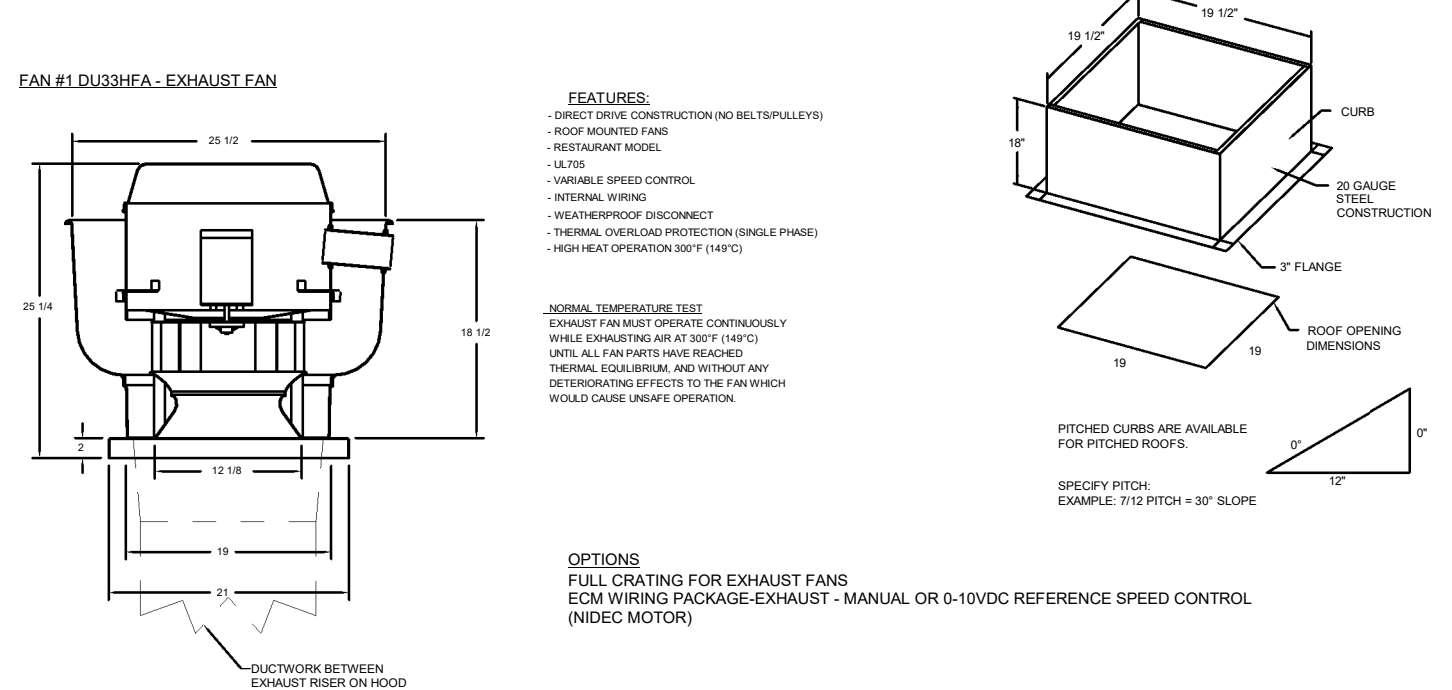
**FAN #1 DU33HEA - EXHAUST FAN**

**FEATURES:**

- HOOP-LOOSE CONSTRUCTION (BELTS/BALLS)
- HOOP RESISTANT
- RESTAURANT MODEL
- 3-1/2"
- VARIABLE SPEED CONTROL
- INTERIOR FINISH
- WEATHERPROOF DISCONNECT
- THEMATIC OVERHAUL PROTECTION (SINGLE PHASE)
- HIGH-HEAT OPERATIONAL (200°F (93°C))

**SEMI-TEMPERATURE TEST:**  
 EXHAUST FAN MUST OPERATE CONTINUOUSLY UNDER CONDITIONS OF TEST (100°F (38°C)) UNTIL ALL PARTS HAVE REACHED OPERATIONAL TEMPERATURE AND OPERATING IN THIS CONDITION FOR 10 HOURS WHICH WOULD CAUSE UNDESIRABLE OPERATION.

**OPTIONS:**  
 FULL CRATING FOR EXHAUST FANS  
 ECM WIRING PACKAGE-EXHAUST - MANUAL OR 0-10VDC REFERENCE SPEED CONTROL (INDEC MOTOR)



**QUESTIONS CONTAIN**

ERIC-HOMES  
 2845 E. Rockwood Blvd., Suite 5  
 Rocklin, UT 84108  
 PHONE: (801) 875-3277  
 SERVICE: (888) 754-6900

Maverik - ROCKLIN, CALIFORNIA  
 ROCKLIN, CA  
 10-13-2020 19337  
 2 3/8" x 1'-0"

7/20/2023 1:53:24 PM

1 2 3 4 5

**FFKR ARCHITECTS**  
 730 Pacific Avenue - Salt Lake City, Utah 84104  
 801.521.6186 • FFKR.COM

**MAVERIK**

**MAVERIK**  
 SUNSET BLVD. & LONETREE BLVD.  
 ROCKLIN, CA  
 CD SET 7/10/2023

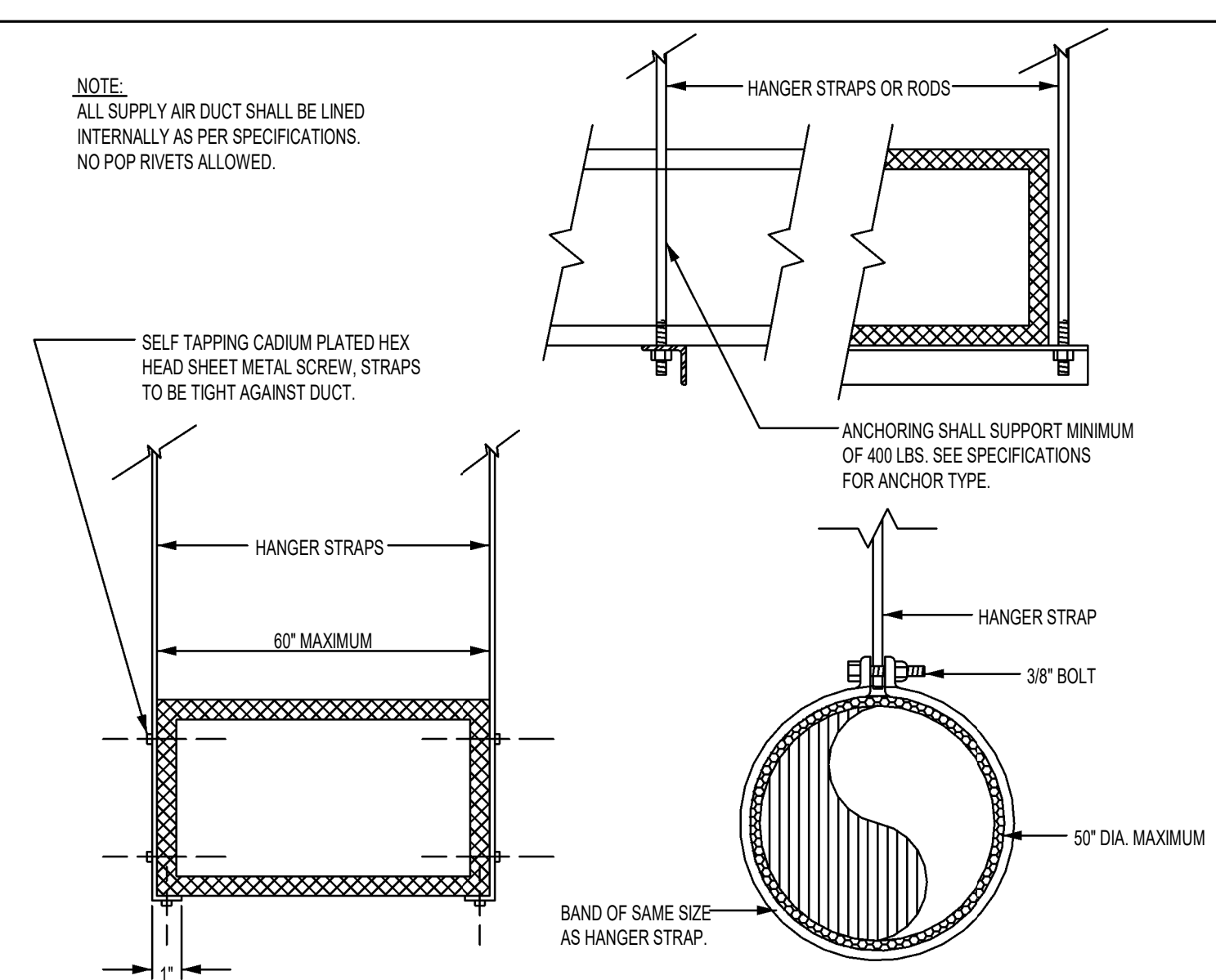
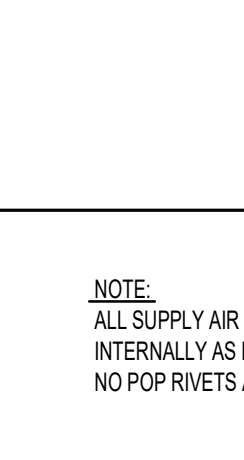


5-6-22  
 DATE: 2-19-21  
 REVISION: \*Fire Review Comments #1\*

PROJECT NUMBER 19337

**TYPE II HOOD DETAILS**

M-1.3



**ROUND & RECTANGULAR DUCT HANGER DETAIL**

HANGER SIZES FOR ROUND DUCT

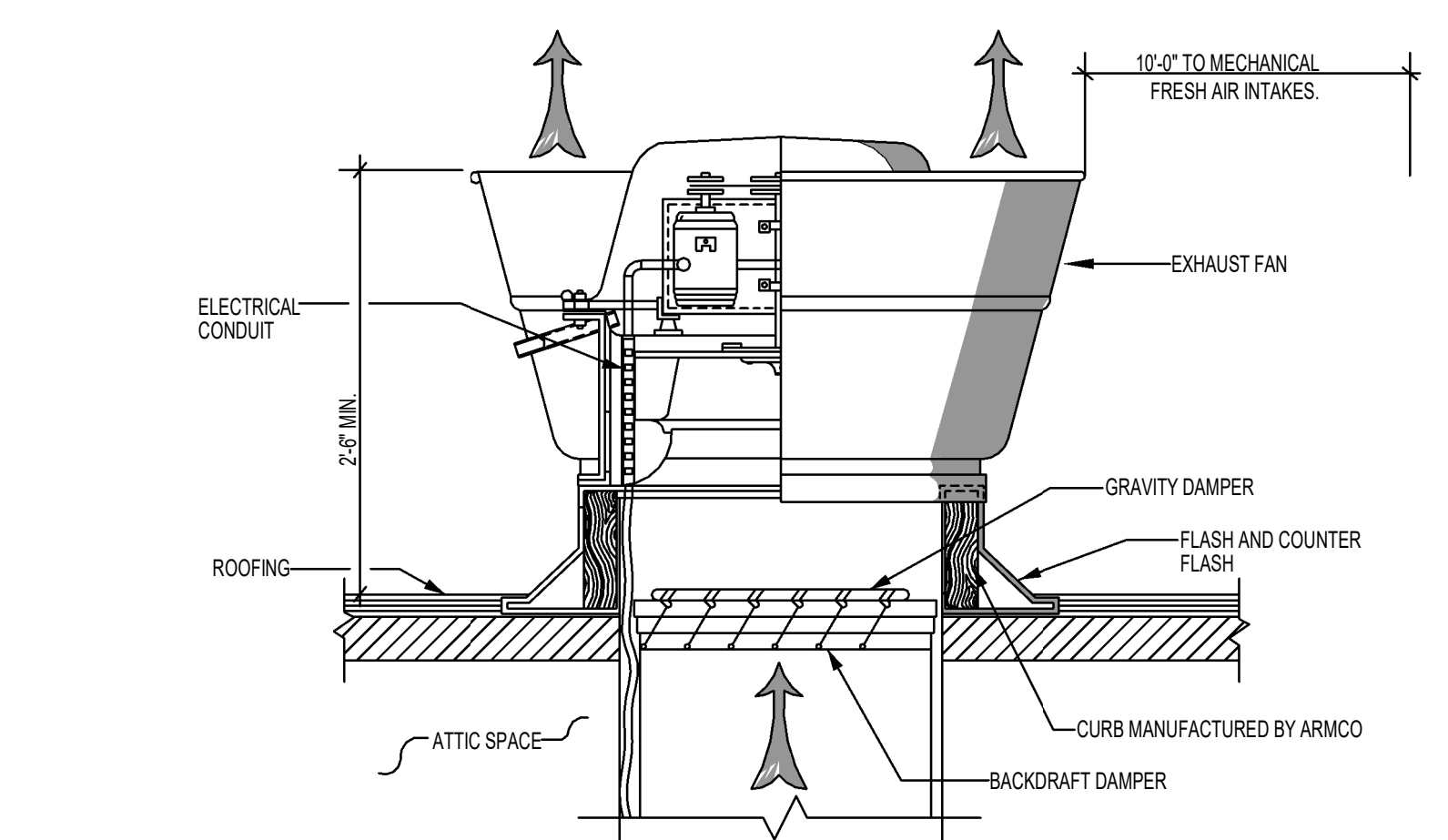
DUCT DIAMETER	ROUND HANGERS	STRAP HANGERS	MAXIMUM SPACING	NUMBER OF HANGERS
UP THRU 18"	8 GAUGE WIRE	1" X 16 GAUGE	10'-0"	1
19" THRU 36"		1" X 12 GAUGE	10'-0"	1

HANGER SIZES FOR RECTANGULAR DUCT

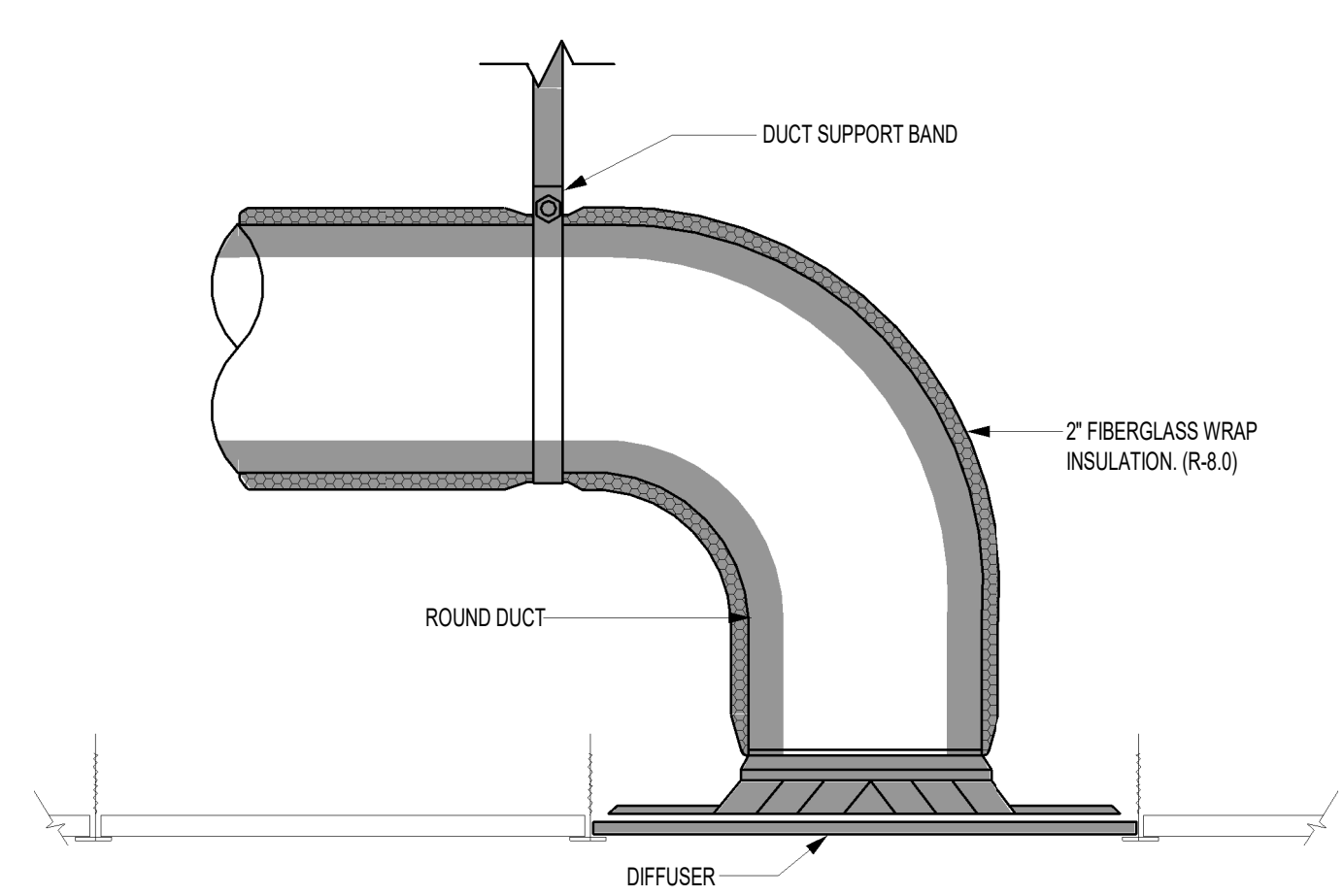
LONGEST DIMENSION OF DUCT	ROUND HANGERS	STRAP HANGERS	TRAPEZE SHELF ANGLES	MAXIMUM SPACING
UP THRU 18"	8 GAUGE WIRE	1" X 16 GAUGE	1" X 1" X 18"	10'-0"
19" THRU 30"	8 GAUGE WIRE	1" X 16 GAUGE	1" X 1" X 18"	10'-0"
31" THRU 42"	1/4" ROD	1" X 16 GAUGE	1-1/2" X 1-1/2" X 18"	10'-0"

**ROUND & RECTANGULAR HANGER SIZES DETAIL**

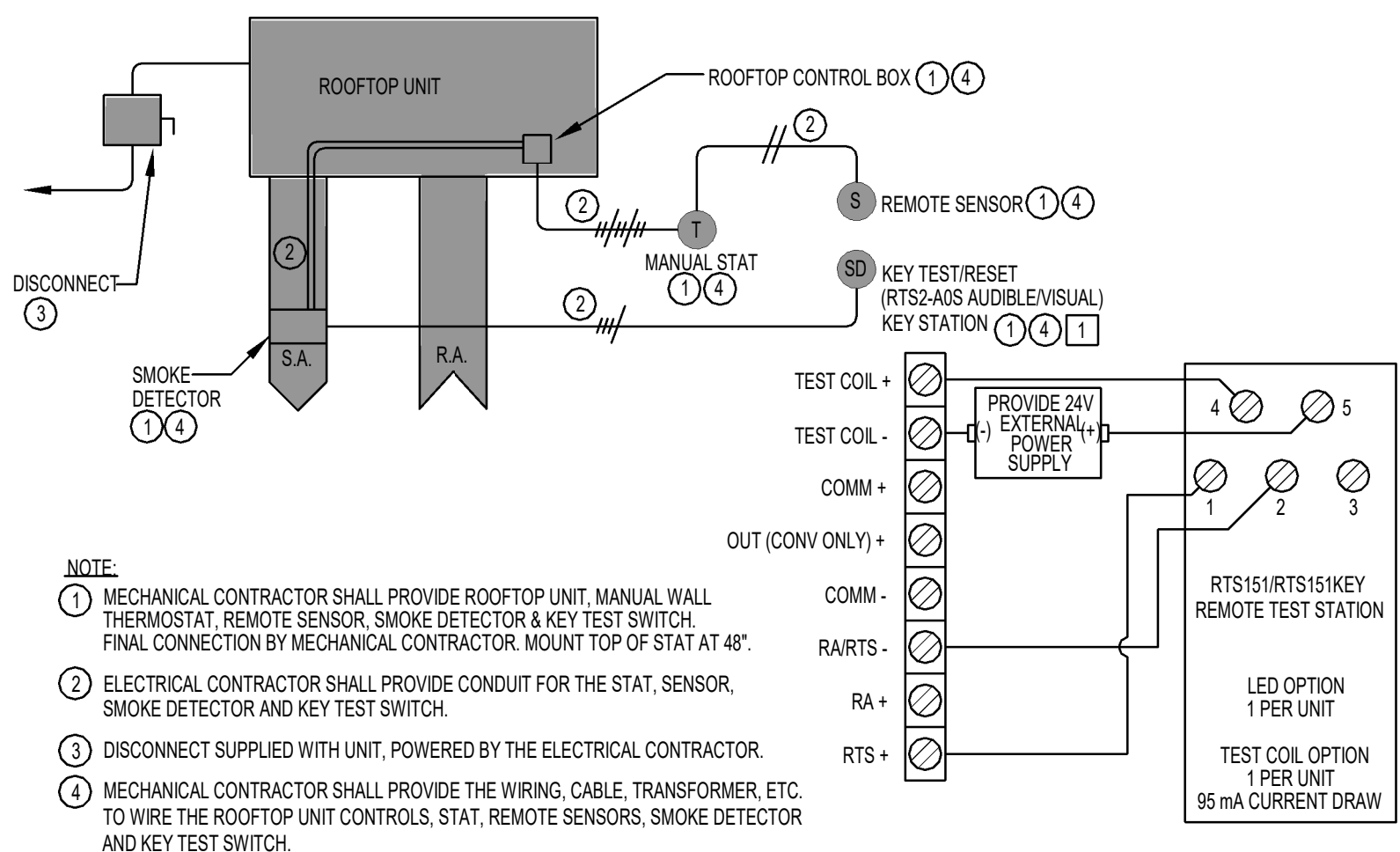
**7 ROUND & RECTANGULAR HANGER DETAIL**  
SCALE: NONE



**4 ROOF EXHAUST FAN MOUNTING DETAIL**  
SCALE: NONE

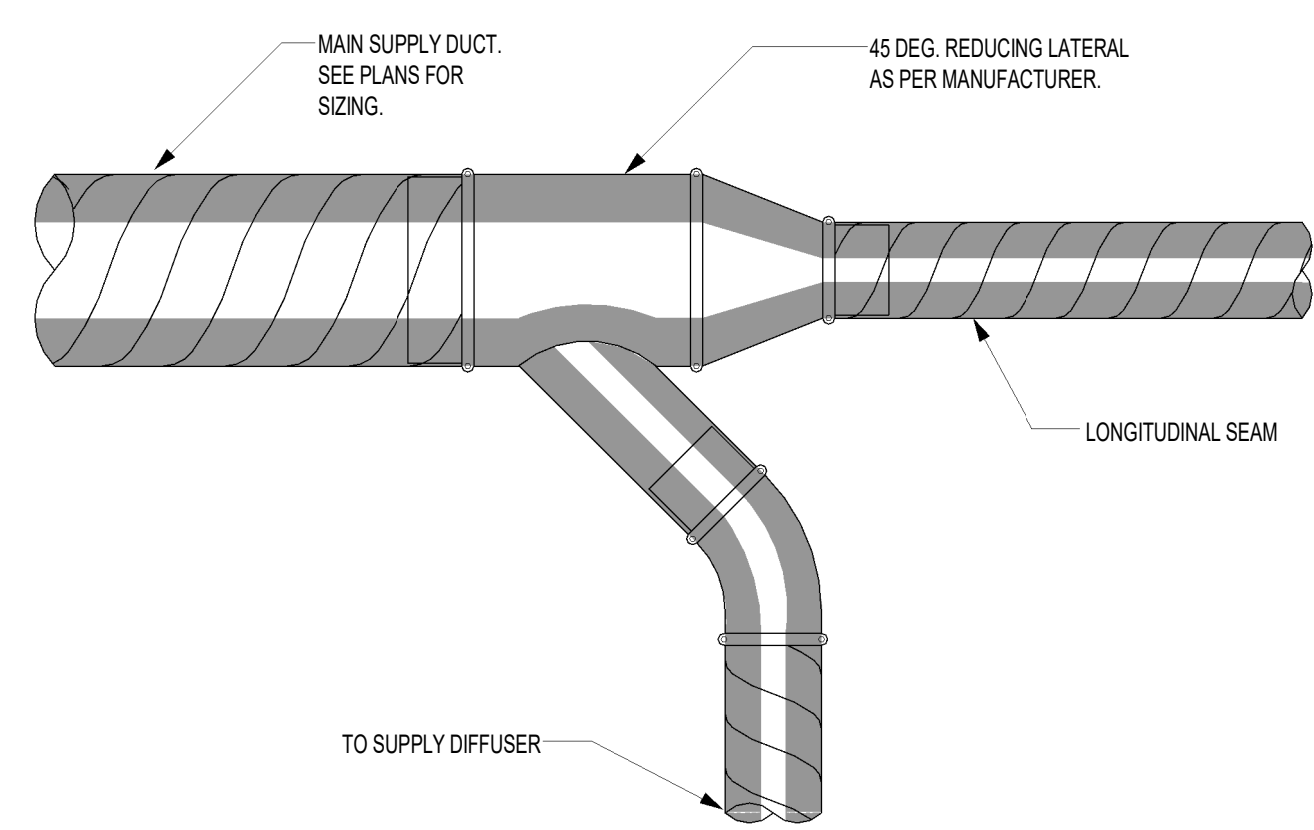


**1 CEILING DIFFUSER DETAIL**  
SCALE: NONE

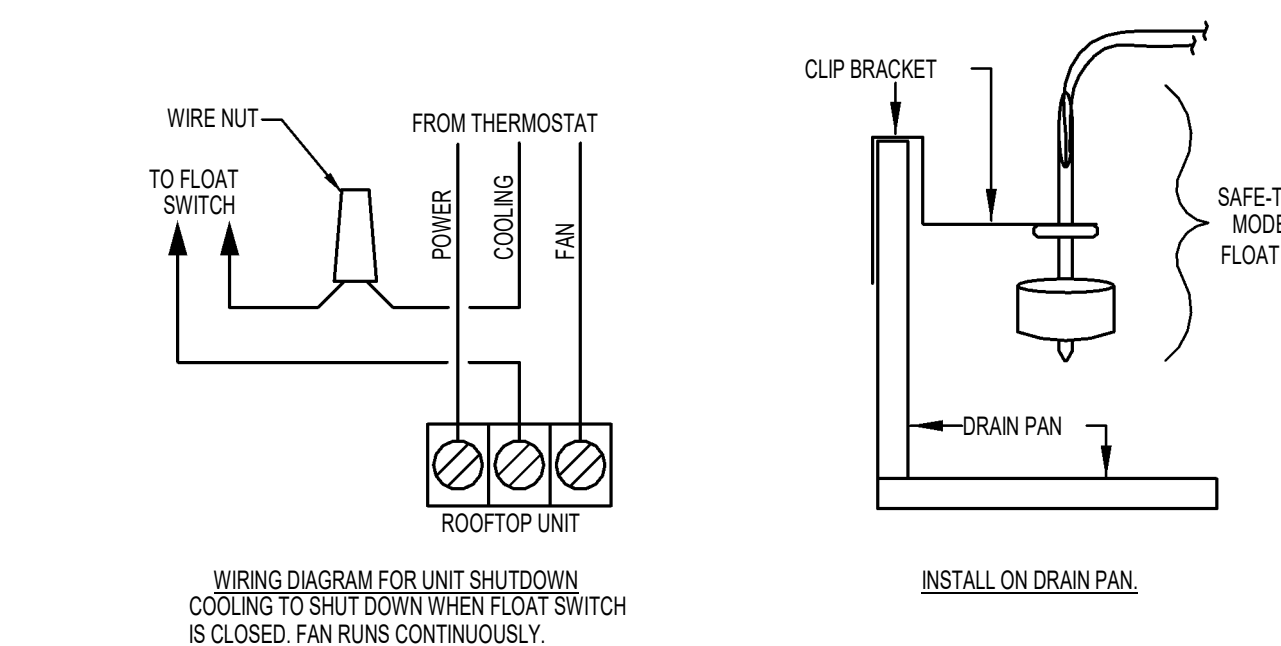


**NOTE:**  
 1 MECHANICAL CONTRACTOR SHALL PROVIDE ROOFTOP UNIT, MANUAL WALL THERMOSTAT, REMOTE SENSOR, SMOKE DETECTOR & KEY TEST SWITCH. FINAL CONNECTION BY MECHANICAL CONTRACTOR. MOUNT TOP OF STAT AT 48".  
 2 ELECTRICAL CONTRACTOR SHALL PROVIDE CONDUIT FOR THE STAT, SENSOR, SMOKE DETECTOR AND KEY TEST SWITCH.  
 3 DISCONNECT SUPPLIED WITH UNIT, POWERED BY THE ELECTRICAL CONTRACTOR.  
 4 MECHANICAL CONTRACTOR SHALL PROVIDE THE WIRING, CABLE, TRANSFORMER, ETC. TO WIRE THE ROOFTOP UNIT CONTROLS, STAT, REMOTE SENSORS, SMOKE DETECTOR AND KEY TEST SWITCH.

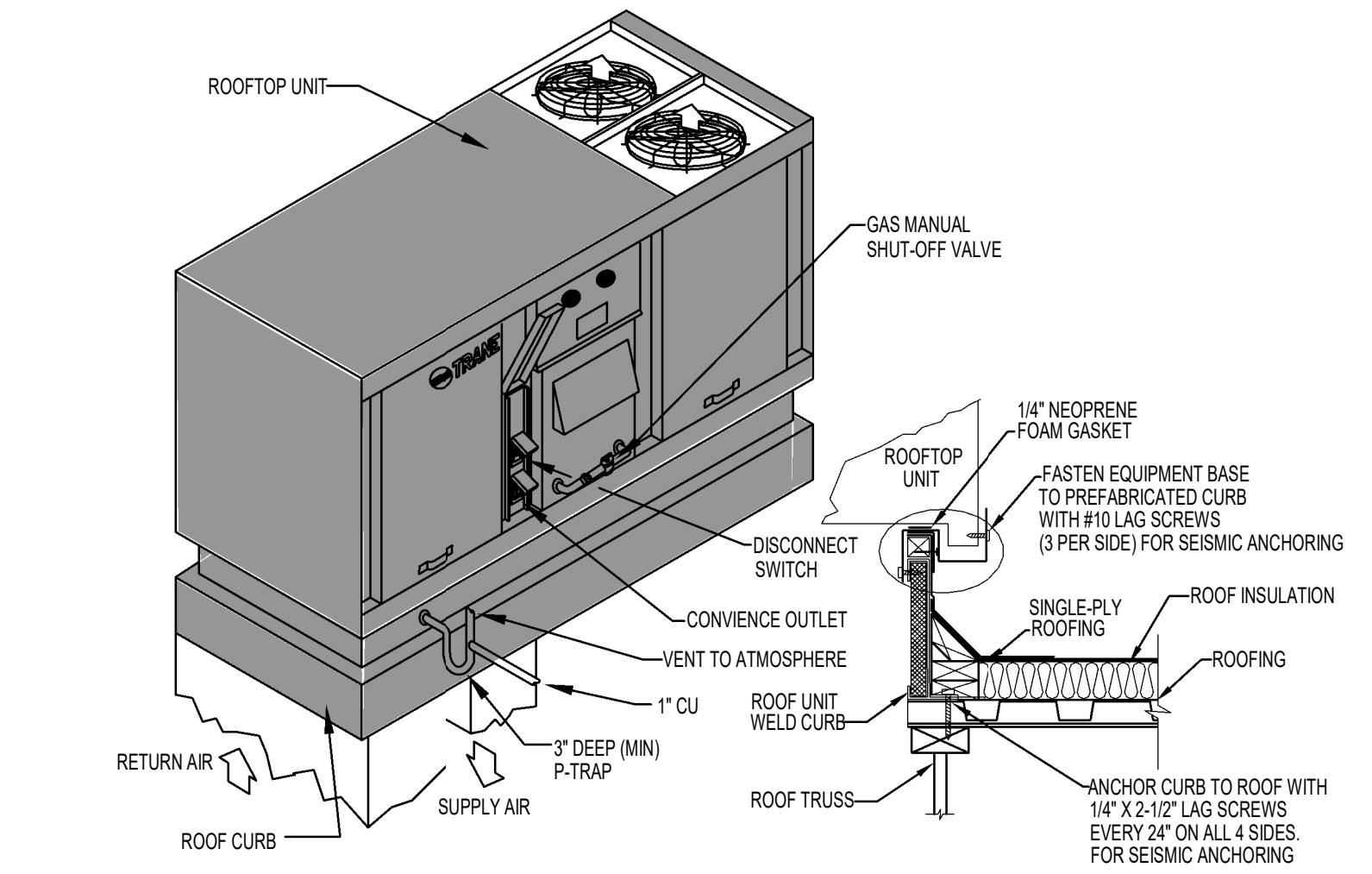
**5 ROOFTOP WIRING DIAGRAM DETAIL**  
SCALE: NONE



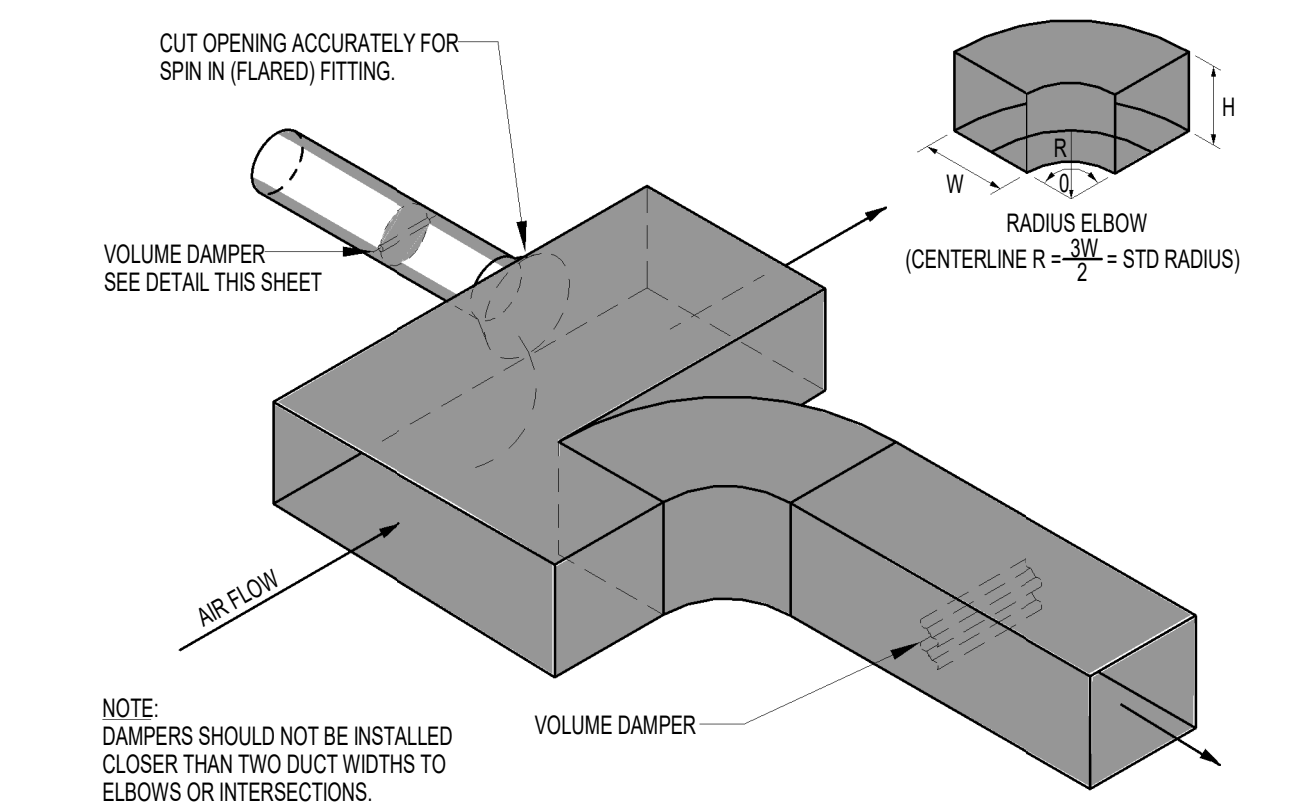
**2 LOW PRESSURE BRANCH TAKE-OFF DETAIL**  
SCALE: NONE



**8 ROOFTOP CONDENSATE SWITCH**  
SCALE: NONE



**6 DOWNFLOW ROOFTOP UNIT MOUNTING DETAIL**  
SCALE: NONE



**3 BRANCH DUCT TAKE-OFF & DAMPER DETAIL**  
SCALE: NONE