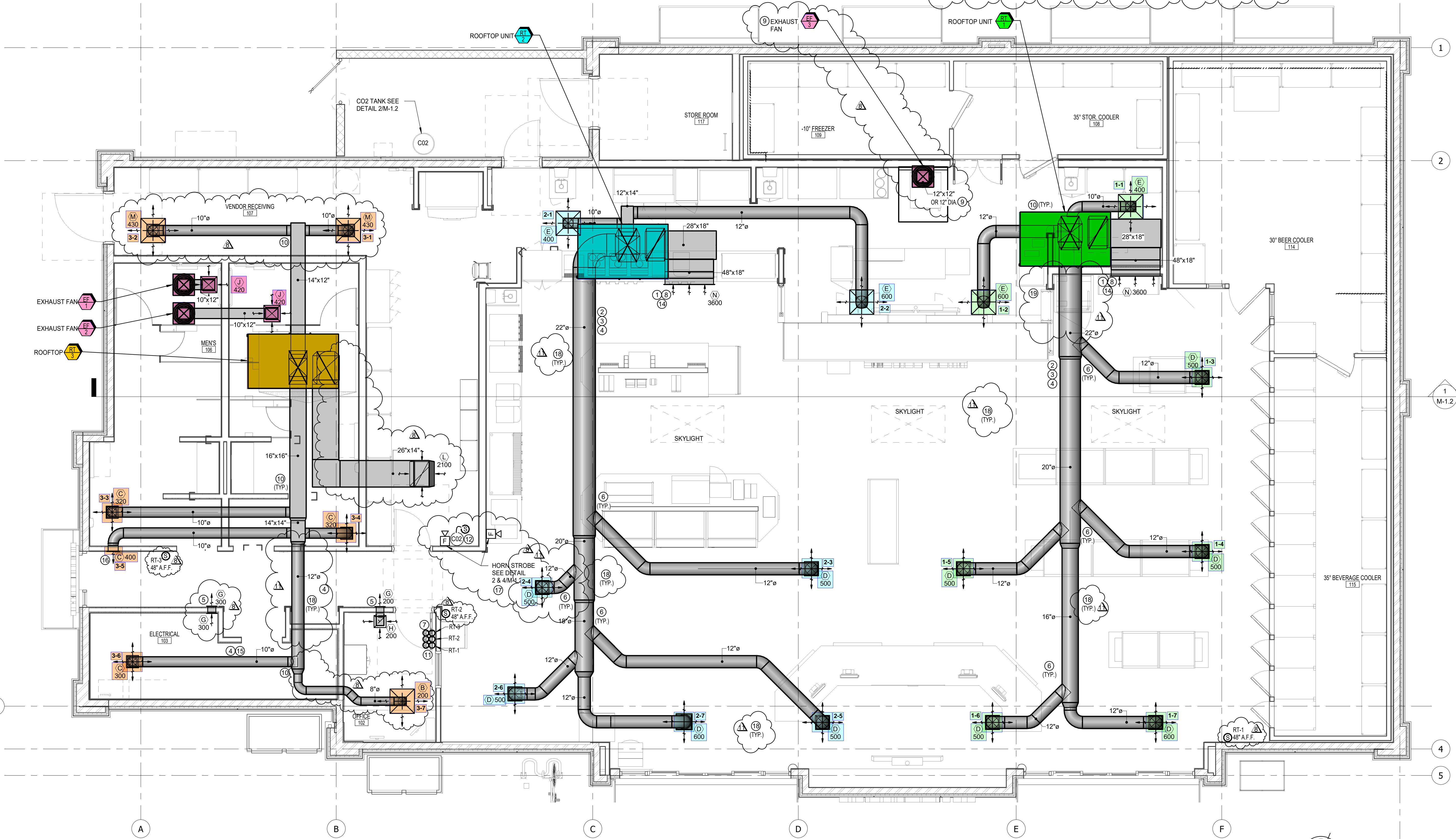


7/20/2023 1:53:12 PM

M-1.1 KEY NOTES	
1	MOUNT TOP OF RETURN GRILLE AS HIGH AS POSSIBLE BELOW ROOF DECK AND BETWEEN TRUSSES
2	MAIN SUPPLY DUCTS SHALL BE DOUBLE WALL LINED DUCT WITH 1" (R-4.2) LINER & PERFORATED INSIDE DUCT (K-27). ALL BRANCH DUCTS ARE UNLINED DUCTWORK.
3	INSTALL EXPOSED SUPPLY DUCTWORK CENTERED BETWEEN TRUSS AND ROUTE BRANCH DUCTS THRU TRUSS WEB OPENINGS. INSTALL SUPPLY REGISTER AT BOTTOM CHORD OF TRUSS.
4	DUCTWORK SHALL BE PAINTLOCK OR PRIMED FOR PAINTING.
5	PROVIDE 8 X 8 DUCT SLEEVE OPENING AT TRUSS ELEVATION FOR RETURN AIR. INSTALL TRANSFER GRILLE FINS ANGLED UPWARD.
6	INSTALL BALANCE DAMPER ON TOP OF DUCT TO HIDE FROM PUBLIC EYE.
7	LOCATE THERMOSTATS IN OFFICE. COORDINATE LOCATION WITH CONTRACTOR.
8	RETURN DUCT SHALL BE INSULATED PER SPECIFICATION WITH 1" (R-5.0) LINER.
9	EXHAUST DUCT SHALL BE ALUMINUM. FOLLOW SMACNA STANDARDS FOR GAUGE. PROVIDE DUCT CLEANOUT ON HOOD EXHAUST DUCT AT EACH CHANGE IN DIRECTION PER UMC 510.3 & 507.1.3
10	INSTALL BALANCING DAMPER ON EACH BRANCH DUCT TAKE-OFF.
11	INSTALL TEST AND RESET SWITCH ON WALL INSIDE OFFICE.
12	INSTALL CO2 DETECTOR ON THE WALL AND SENSORS 12" ABOVE THE BAG AND THE BOX FLOOR. (INSTALL CO2 EQUIPMENT PER MANUFACTURER'S INSTALLATION MANUAL & DETECTOR HEIGHT.)
14	LOCATE RETURN GRILLE CENTERED BETWEEN ROOF TRUSS. TURN RETURN GRILLES UPSIDE DOWN.
15	INSTALL SUPPLY DUCT IN CENTER OF ELECTRICAL ROOM 36" CLEAR OF PANELS AND 6'-0" ABOVE PANELS
16	AIM GRILLE BLADES DOWNWARD
17	PROVIDE REMOVE IRON STROBE FOR CO2 DETECTION SYSTEM AT 11'-0" A.F.F. AND 12" FROM THE END OF THE WALL.
18	INSTALL ALL SUPPLY DUCT SHALL BE INSTALLED AS TIGHT AS POSSIBLE TO ROOF DECKING
19	INSTALL MAIN SUPPLY DUCT FROM RT-1 AS TIGHT AS POSSIBLE TO ROOF TRUSS TO BE ABLE TO INSTALL WALLPAPER



1 MECHANICAL FLOOR PLAN
M-1.1
1/4" = 1'-0"

FFKR ARCHITECTS
730 Pacific Avenue • Salt Lake City, Utah 84104
O 801.521.6186 • FFKR.COM



MAVERIK
SUNSET BLVD. & LONETREE BLVD.
ROCKLIN, CA
CD SET 7/10/2023



DATE	REVISION
8-5-22	Owner Updates
11-5-23	Owner Updates

PROJECT NUMBER 19337

MECHANICAL FLOOR PLAN

M-1.1