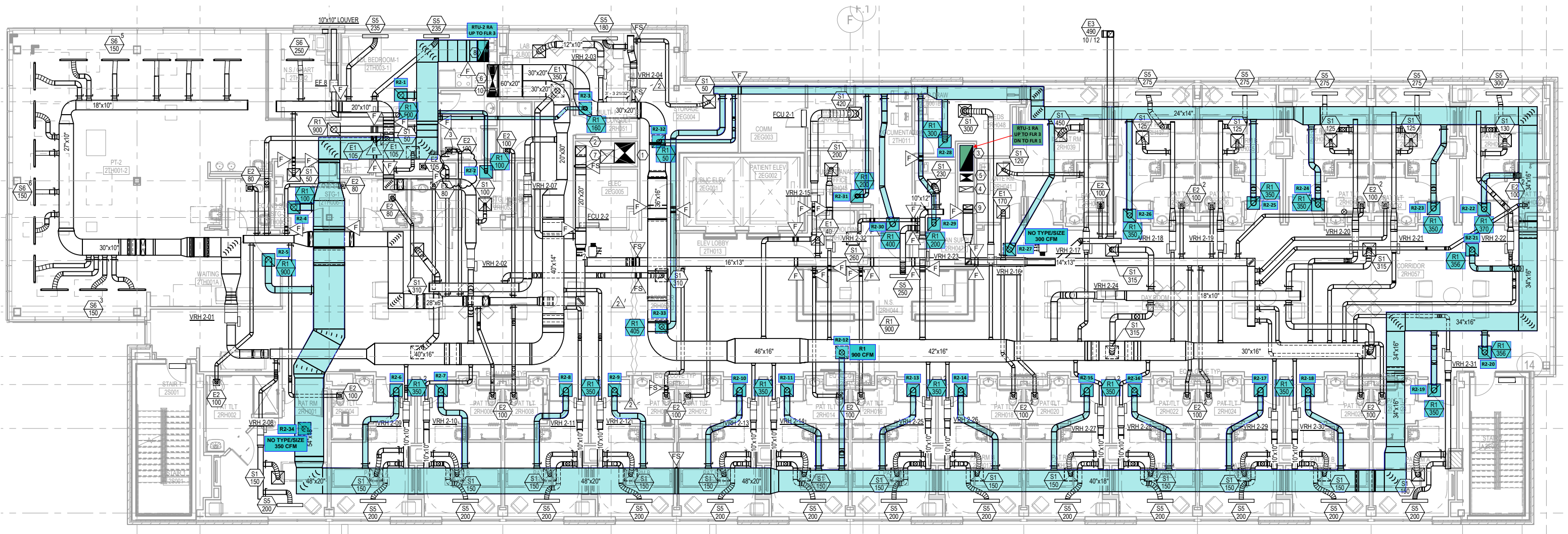


① LEVEL 01 - FLOOR PLAN - MECHANICAL

KEYED NOTES: ⬡

NOTE: REFERENCE NUMBER INSIDE HEXAGON

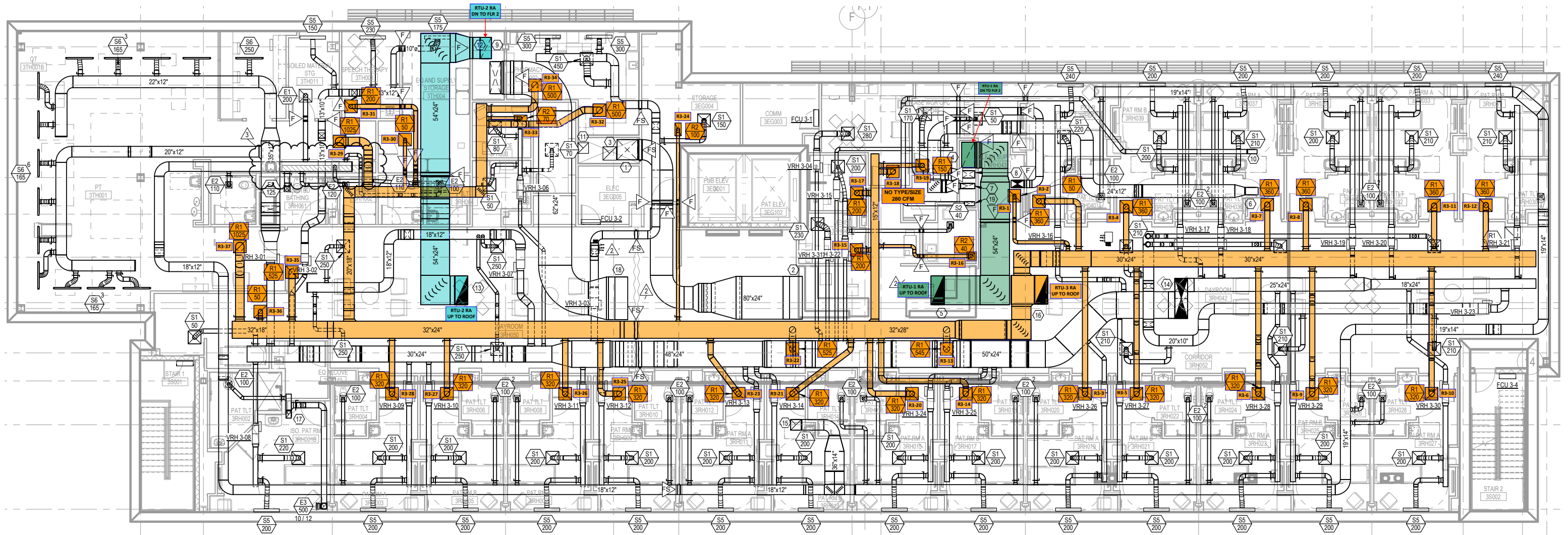
- 1 38 x 38 to RTU-1 SEE M12-02 FOR CONTINUATION
- 2 25 x 25 to EF-1 SEE M12-02 FOR CONTINUATION
- 3 48 x 24 to RTU-1 SEE M12-02 FOR CONTINUATION
- 4 24 x 14 to EF-4 SEE M12-02 FOR CONTINUATION. 2 HOUR FIRE RATED DUCT LINING FROM HOOD TO ROOF PENETRATION.
- 5 24 X 14 TO MAU-1 SEE M12-02 FOR CONTINUATION.
- 6 24/12 DUCT CONNECTION TO HOOD. BALANCE TO 746 CFM. TYPICAL 3 PLACES.
- 7 CONNECT TO TWO 14" ROUND GREASE DUCT CONNECTION AT HOOD.
- 8 PROVIDE FSD FOR ALL DUCTS EXITING RATED CHASE AT FLOOR SLAB. TYPICAL.
- 9 8" WATER HEATER EXHAUST FLUE PIPES. TERMINATE WITH 45 DEGREE DOWN ANGLE.
- 10 8" WATER HEATER COMBUSTION INTAKE AIR PIPES. TERMINATE WITH 45 DEGREE DOWN ANGLE.
- 11 10X10" DUCT DOWN TO LOW EMED GAS EXHAUST 6" AFF. 1 HOUR FIRE RATED DUCT LINING FROM DIFFUSER TO EXHAUST FAN.
- 12 TWO 16 X 4" STAINLESS STEEL DUCTS DOWN TO DISHWASHER EXHAUST. BALANCE TO 400 AND 200 CFM AT DISHWASHER EXIT AND ENTRANCE RESPECTIVELY. ENTIRE RUN BACK TO MAIN EXHAUST DUCT TO BE OF STAINLESS STEEL CONSTRUCTION.



1 LEVEL 02 - FLOOR PLAN - MECHANICAL

KEYED NOTES: #
NOTE: REFERENCE NUMBER INSIDE HEXAGON

- 1 38 x 38 TO RTU-1 SEE M12-03 FOR CONTINUATION
- 2 20 x 20 TO EF-1 SEE M12-03 FOR CONTINUATION
- 3 48 X 24 TO RTU-1 SEE M12-03 FOR CONTINUATION
- 4 24 x 14 TO EF-4 SEE M12-03 FOR CONTINUATION
- 5 24 X 14 TO MAU-1 SEE M12-03 FOR CONTINUATION
- 6 60 X 20 TO RTU-2 SEE M12-03 FOR CONTINUATION
- 7 20 x 20 TO EF-2 SEE M12-03 FOR CONTINUATION
- 8 54 X 24 TO RTU-2 SEE M12-03 FOR CONTINUATION
- 9 8 X 18 TO EF-5 SEE M12-03 FOR CONTINUATION
- 10 PROVIDE FSD FOR ALL DUCTS EXITING RATED CHASE AT FLOOR SLAB. TYPICAL.



1 LEVEL 03 - FLOOR PLAN - MECHANICAL

KEYED NOTES: #

NOTE: REFERENCE NUMBER INSIDE HEXAGON

- | | | | |
|----|--|----|---|
| 1 | 38 x 38 DOWN TO SECOND FLOOR SEE M12-02 FOR CONTINUATION | 11 | 20 X 20 TO EF-2 SEE M12-04 FOR CONTINUATION |
| 2 | 80 X 24 TO RTU-1 SEE M12-04 FOR CONTINUATION | 12 | 54 X 24 TO SECOND FLOOR SEE M12-04 FOR CONTINUATION |
| 3 | 20 X 2 TO EF-1 SEE M12-04 FOR CONTINUATION | 13 | 54 X 24 TO RTU-2 SEE M12-04 FOR CONTINUATION |
| 4 | 48 X 24 DOWN TO SECOND FLOOR SEE M12-02 FOR CONTINUATION | 14 | 77 X 30 TO RTU-3 SEE M12-04 FOR CONTINUATION |
| 5 | 54 X 24 TO RTU-1 SEE M12-04 FOR CONTINUATION | 15 | 12 X 12 TO EF-3 SEE M12-04 FOR CONTINUATION |
| 6 | 24 X 14 TO EF-4 SEE M12-04 FOR CONTINUATION | 16 | 54 X 24 TO RTU-3 SEE M12-04 FOR CONTINUATION |
| 7 | 26 X 10 DOWN TO SECOND FLOOR SEE M12-02 FOR CONTINUATION | 17 | 10X14 TO EF-6. SEE M12-04 FOR CONTINUATION |
| 8 | 24 X 14 TO MAU-1 SEE M12-04 FOR CONTINUATION | 18 | 80 X 24 TO RTU-2 SEE M12-04 FOR CONTINUATION |
| 9 | 60 X 20 DOWN TO SECOND FLOOR SEE M12-02 FOR CONTINUATION | 19 | 8X18 TO EF-5. SEE M12-04 FOR CONTINUATION |
| 10 | 8X18 TO EF-5. SEE M12-04 FOR CONTINUATION | | |