

SEAL

OWNER:
S & L Properties Okeechobee LLC
2651 Kinking Court
Portage, WI 53901
Jeffrey J. Liegel, Realty Manager / Member
608-742-2893

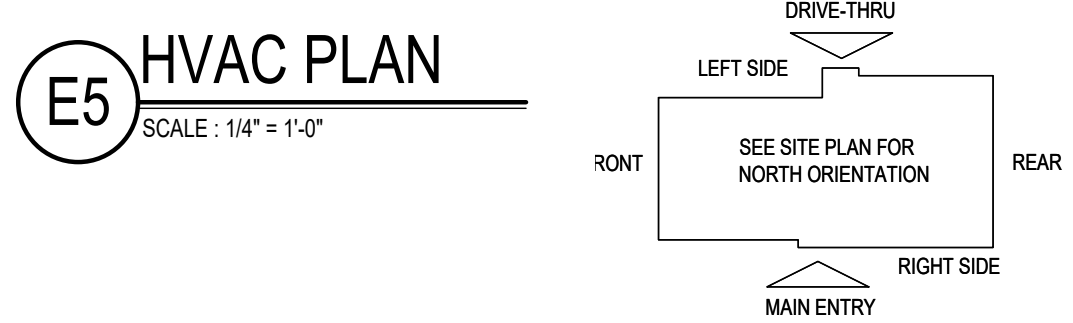
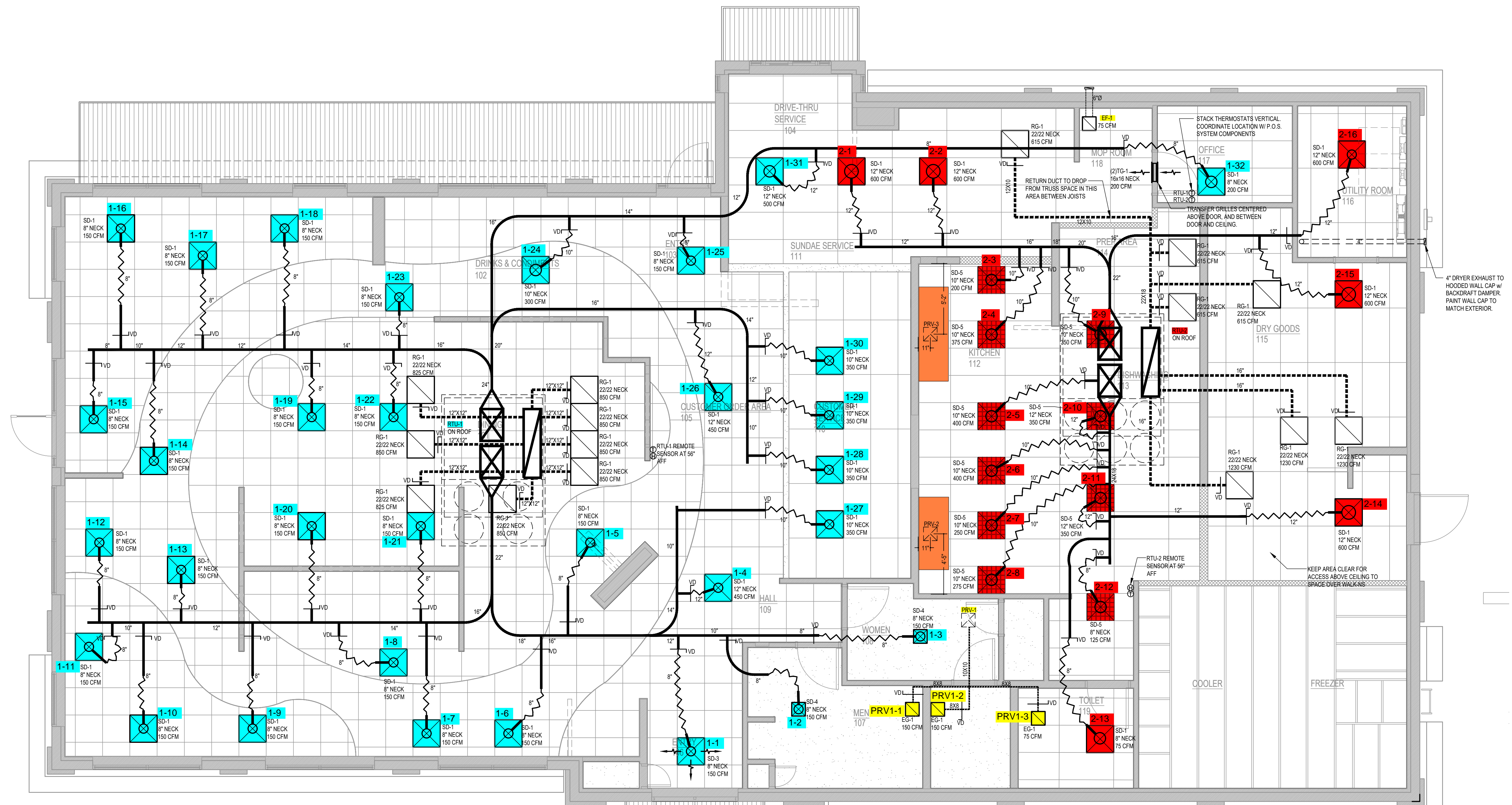
OLLMANN ASSOCIATES ARCHITECTS, P.C.
200 South State Street
Belleville, Illinois 61008
815-544-7790 Phone
© OAA. All rights reserved. Any copying, transmission or
disclosure subject to OAA written approval.

Revision: 06-17-2024

HVAC PLAN, DIFFUSER
SCHEDULE

2023-010

M101



NOTE: ALL DUCTWORK TO BE LOCATED IN TRUSS SPACE WHERE POSSIBLE. SEE FRAMING PLAN.
HVAC SETPOINTS RECOMMENDED BY CORPORATE OPERATIONAL GUIDELINES:
1. DINING: HEATING 70°, COOLING 72°
2. KITCHEN: HEATING 68°, COOLING 74°
ALL MECHANICAL ROOF EQUIPMENT REQUIRES STRAPS TO RESIST THE WIND PRESSURES DETERMINED IN ACCORDANCE WITH THE FLORIDA BUILDING CODE, BUILDING. SEE STRUCTURAL PLANS FOR SPECIFICATIONS.

E5 HVAC PLAN
SCALE: 1/4" = 1'-0"

SUPPLY DUCTWORK SIZING TABLE*				
SIZE	ROUND		RECTANGULAR	
	CFM RANGE	SIZE	CFM RANGE	SIZE
8"	115 - 235	8" x 8"	205 - 300	
10"	240 - 435	10" x 8"	305 - 400	
12"	440 - 710	10" x 10"	405 - 550	
14"	715 - 1,070	12" x 10"	555 - 700	
16"	1,075 - 1,530	12" x 12"	705 - 900	
18"	1,535 - 2,090	14" x 12"	905 - 1,105	
20"	2,095 - 2,760	16" x 12"	1,110 - 1,315	
22"	2,765 - 3,550	18" x 12"	1,320 - 1,520	
24"	3,555 - 4,470	20" x 12"	1,525 - 1,740	
*CONTRACTOR MAY SUBSTITUTE RECTANGULAR FOR ROUND DUCTWORK ON MAIN RUNS AT THEIR DISCRETION. BRANCHES TO DIFFUSERS TO REMAIN ROUND.				
		22" x 12"	1,745 - 1,950	
		24" x 12"	1,955 - 2,170	
		26" x 12"	2,175 - 2,400	
		28" x 12"	2,405 - 2,610	
		30" x 12"	2,615 - 2,840	
		32" x 12"	2,845 - 3,070	
		34" x 12"	3,075 - 3,290	
		36" x 12"	3,295 - 3,520	
		36" x 14"	3,525 - 4,420	

DIFFUSER, REGISTER, AND GRILLE SCHEDULE									
TAG	SERVICE	TYPE	MATERIAL	THROW	FACE	NECK	MOUNTING	MANUFACTURER/MODEL	Notes
SD-1	SUPPLY	LOUVERED	STEEL	4-WAY	24X24	SEE PLAN	LAY-IN	RAYMON PRO2	2.4
SD-2	NOT USED								
SD-3	SUPPLY	LOUVERED	STEEL	3-WAY	12X12	SEE PLAN	SURFACE	RAYMON PRO2/QMF/DAG	2.4
SD-4	SUPPLY	LOUVERED	STEEL	4-WAY	12X12	SEE PLAN	SURFACE	RAYMON PRO2/QMF	2.4
SD-5	SUPPLY	PERFORATED	STEEL	PERFORATED	24X24	SEE PLAN	LAY-IN	RAYMON RPR	2.4
RG-1	RETURN	SQUARE EGGRATE	ALUMINUM	N/A	24X24	22x22	LAY-IN	RAYMON FGEC-TB1	2.3, 4
EG-1	RETURN	LOUVERED GRILLE	ALUMINUM	N/A	12X12	SEE PLAN	SURFACE	RAYMON RA-HVD	1.2, 4
TG-1	TRANSFER	LOUVERED GRILLE	ALUMINUM	N/A	SEE PLAN	SEE PLAN	SURFACE	RAYMON RA-RH	2.4

DIFFUSER NOTES:

- PROVIDE w/ ADJUSTABLE OPPOSED BLADE DAMPER
- VERIFY ALL DIFFUSERS AND RETURN GRILLE COLORS WITH OWNER AND ARCHITECT
- PROVIDE w/ 22X22 PLENUM BOX
- ALL DIFFUSERS AND RETURNS LOCATED IN BLACK CEILING SHALL BE FLAT BLACK FINISH.

REVISED NOTE

HOOD INFORMATION																	
HOOD NO.	MARK	MODEL	HOOD DIMENSIONS (IN.)			HOOD CONSTR.	COOKING LOAD / DUTY RATING	EXHAUST					SUPPLY		TOTAL WEIGHT LBS.	SECTION LOCATION	
			LENGTH	WIDTH	HEIGHT			COLLAR(S)			CFM	S.P.	MUA CFM	AC CFM			
1	GRIDDLE HOOD	XGEP-64-S	64	TOP 23 BOT 8	FRT 12 BACK 36	430 SS WHERE EXPOSED	MEDIUM	1500	12	12		1500	1.918			136.8	SINGLE

HOOD INFORMATION														
HOOD NO.	MARK	LIGHTING DETAILS			GREASE FILTRATION DETAILS			UTILITY CABINET(S)						
		FIXTURE TYPE	BULB / LAMP INFO	QTY	FOOT CANDLES	TYPE / MODEL	MATERIAL	QTY	SIZE (IN.)	LOCATION	FIRE SYSTEM	SIZE	MODEL	CONTROLS
1	GRIDDLE HOOD					GREASE GRABBER	4	16						
						STAINLESS STEEL	0	20	16					

HOOD OPTIONS
 UL 710 LISTED W/ OUT EXHAUST FIRE DAMPER - UL #R25625
 BACK NON-INTEGRAL AIR SPACE - 3 IN WIDE
 26 IN HIGH CEILING ENCLOSURES - FRONT LEFT RIGHT - FIELD INSTALLED
 FACTORY MOUNTED EXHAUST COLLAR(S)
 PERFORMANCE ENHANCING LIP (PEL) TECHNOLOGY
 STANDING SEAM CONSTRUCTION FOR SUPERIOR STRENGTH

SPECIAL DESIGN REQUESTS
 SDR #K1100145 - FLUE BYPASS HOOD
 SDR #K1800144 - CULVERS 4VAT 2FIRE PROCESS - GRIDDLE HOOD

Direct Drive Upblast Centrifugal Roof Exhaust Fan													
MARK INFORMATION			FAN INFORMATION					MOTOR INFORMATION					
QTY	MARK	MODEL	VOLUME (CFM)	TOTAL EXTERNAL SP (IN WG)	FAN RPM	OPERATING POWER (HP)	WEIGHT (LB.)	SIZE (HP)	V/C/P	ENCLOSURE	MOTOR RPM	WINDINGS	NEC FLA*
1	PRV-2 Griddle Fan	XCUE-140-VG	1,500	1.801	1,725	0.83	92	1	115/60/1	OP	1725	1	16

*NEC FLA - Based on table 430.250 or 430.248 of National Electrical Code 2020. Actual motor FLA may vary for sizing thermal overload, consult factory"

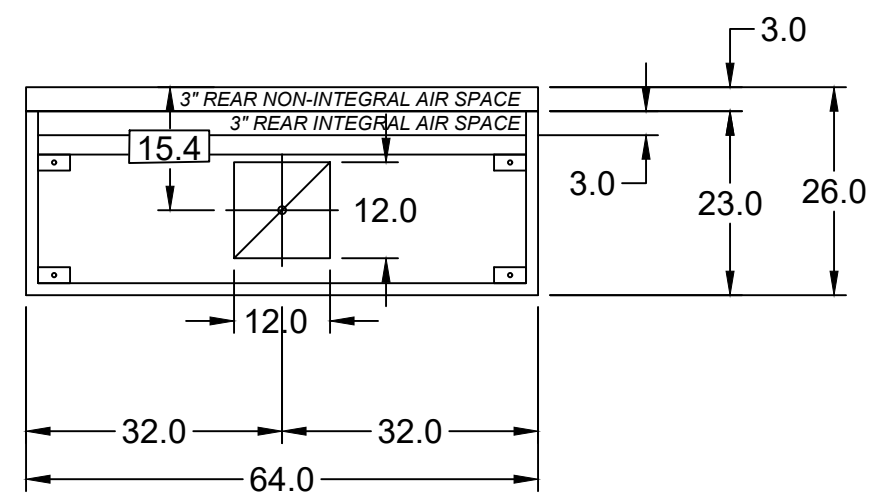
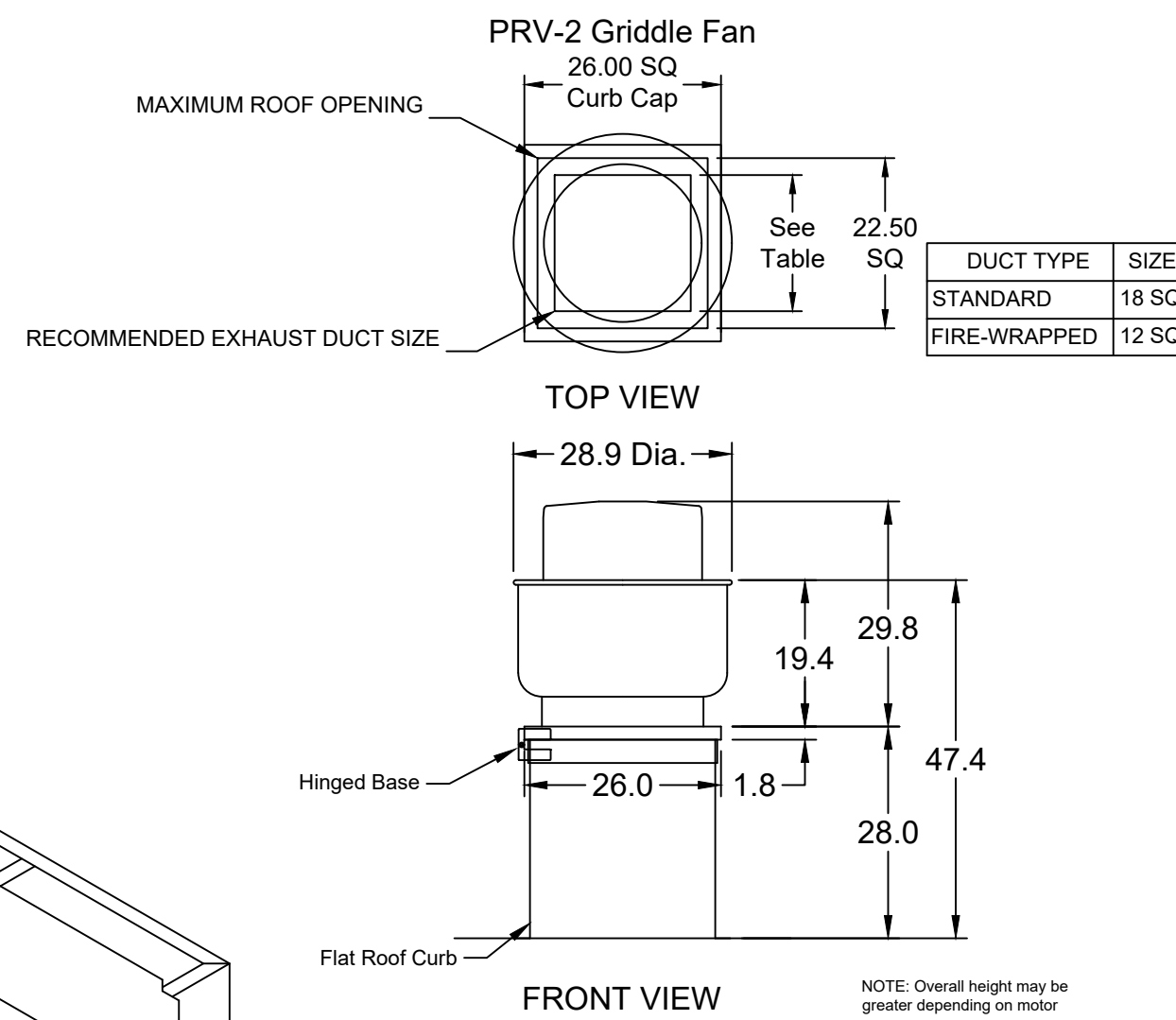
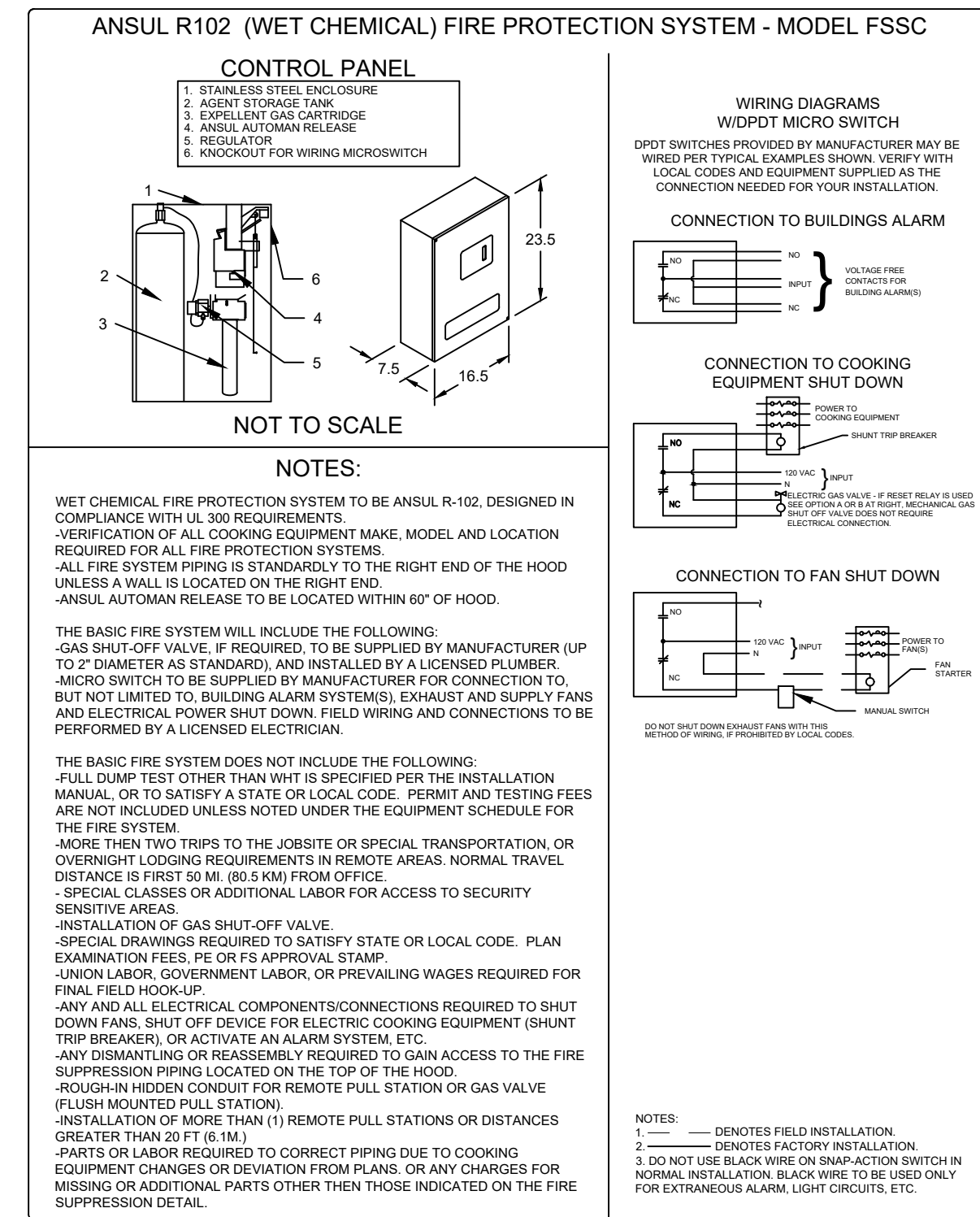
PRV-2 Griddle Fan - SELECTED OPTIONS AND ACCESSORIES

One piece fully welded windband
 Tapered bushing wheel hub
 Breather tube outlet area min. 4.4 sq. in. (sizes 99-480), 2.0 sq. in. (sizes 60-95)
 Min. windband material thickness: 0.051" aluminum (060-240), 0.064" aluminum (240HP, 240XP), 0.080" aluminum (sizes 300-480)
 Larger Curb Cap Size - 26 Square
 UL/cUL 762 Listed - "Power Ventilators for Rest. Exh. Appliances"
 Switch, NEMA-3R, Toggle, Shipped with Unit
 Hinge, Factory Installed
 High Temp Curb Seal Rated for Continuous Duty at 1500 F (Factory Attached)
 Grease Trap (PN 475538)
 Clean-out Port - Factory Installed

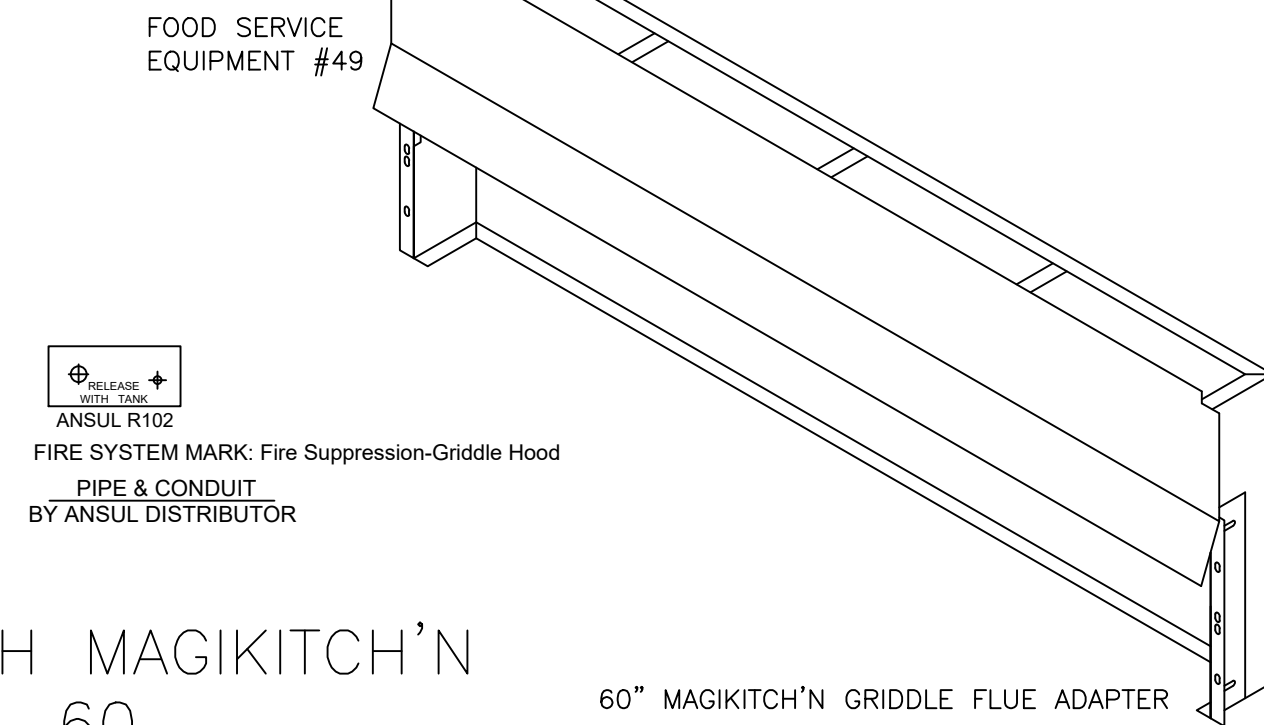
FIRE SYSTEM INFORMATION									
MARK	MODEL	LOCATION	FLOW POINTS		SUPPLY LINE	DETECTION	MARK(S) PROTECTED BY FIRE SYSTEM		
			HOODS	PCU					
FIRE SUPPRESSION-GRIDDLE HOOD	ANSUL R-102 WET CHEMICAL	REMOTE MOUNTED	6 UTILIZED	11 AVAILABLE	CONTINUOUS	FUSIBLE LINK	GRIDDLE HOOD SECTION 1		

FIRE SYSTEM OPTIONS AND ACCESSORIES
 FULL INSTALLATION (INCLUDES PRE-PIPED HOOD(S) WITH DETECTION AND FACTORY COORDINATED INSTALL)
 CHROME SLEEVES FOR FACTORY PROVIDED APPLIANCES DROPS - INCLUDED
 METAL BLOW-OFF CAPS - INCLUDED
 HOOD SUPPRESSION TANK - INCLUDED - 3 GAL. - ((1) 3.0 TANK(S))
 REMOTE PULL STATION - STANDARD - FIELD INSTALLATION AT SINGLE POINT OF EGRESS

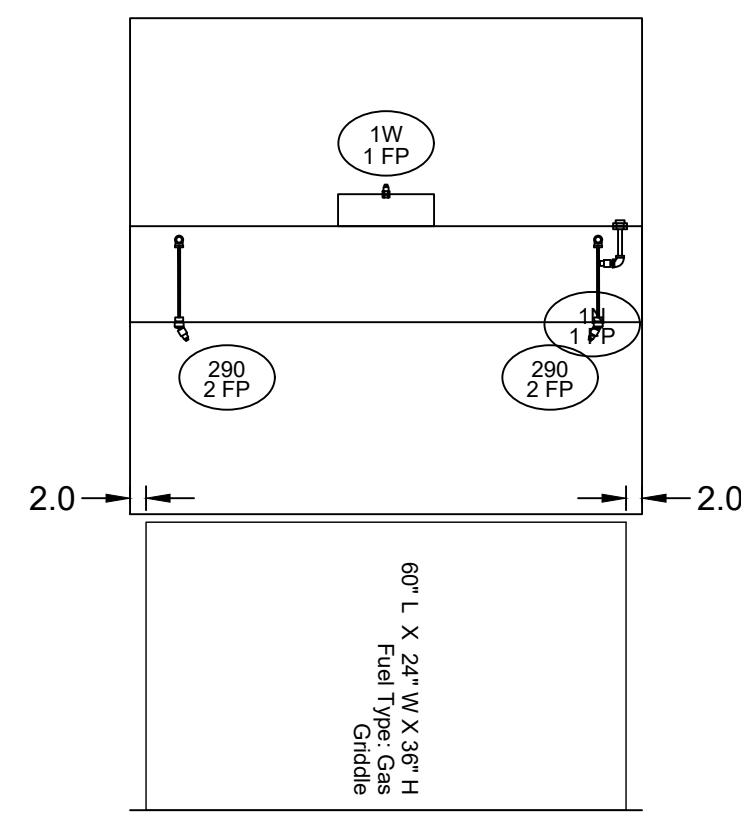
SPECIAL DESIGN REQUESTS
 SDR #K1800144 - CULVERS 4VAT 2FIRE PROCESS - GRIDDLE HOOD



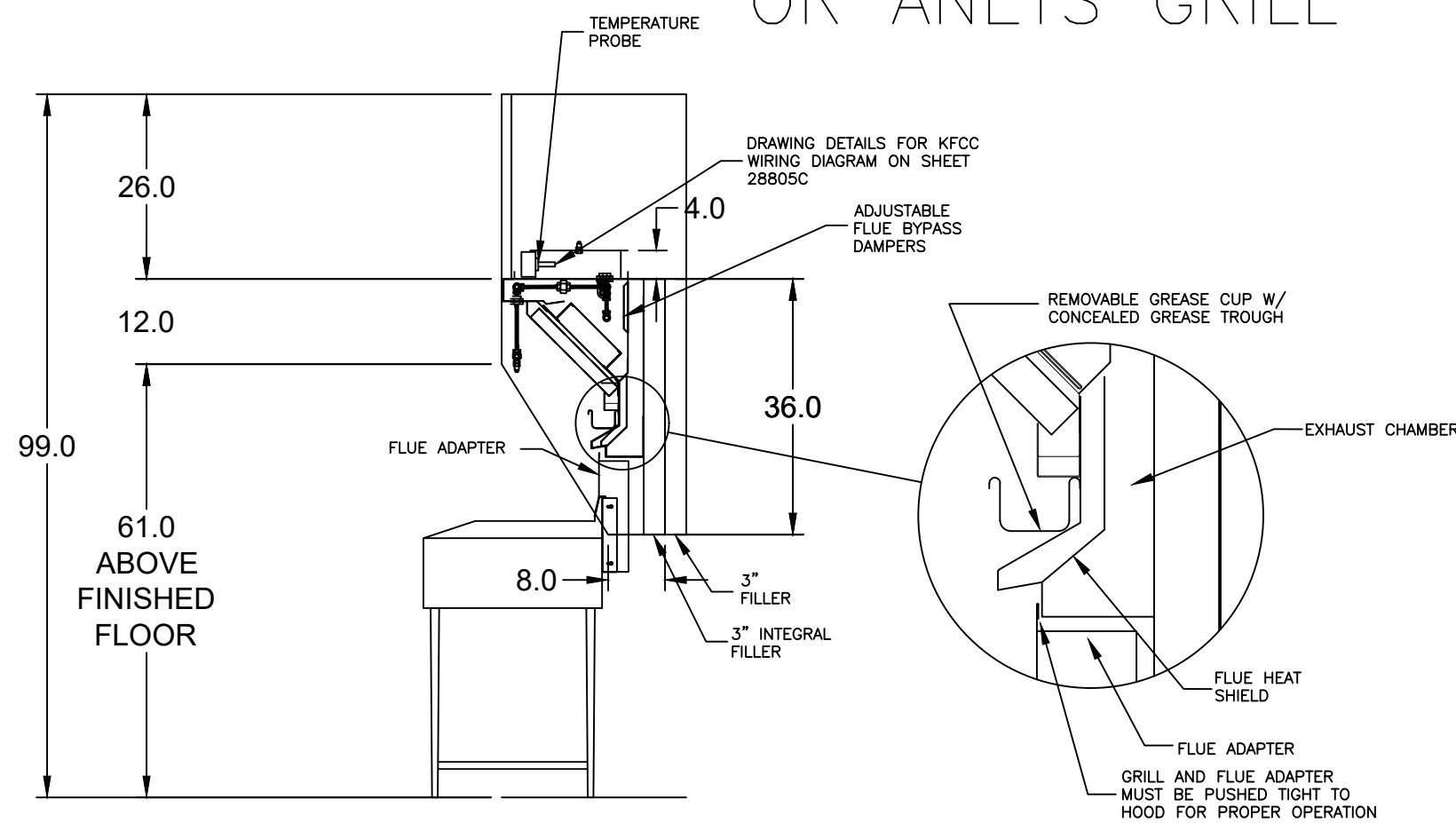
MARK: Griddle Hood - SECTION 1 PLAN VIEW



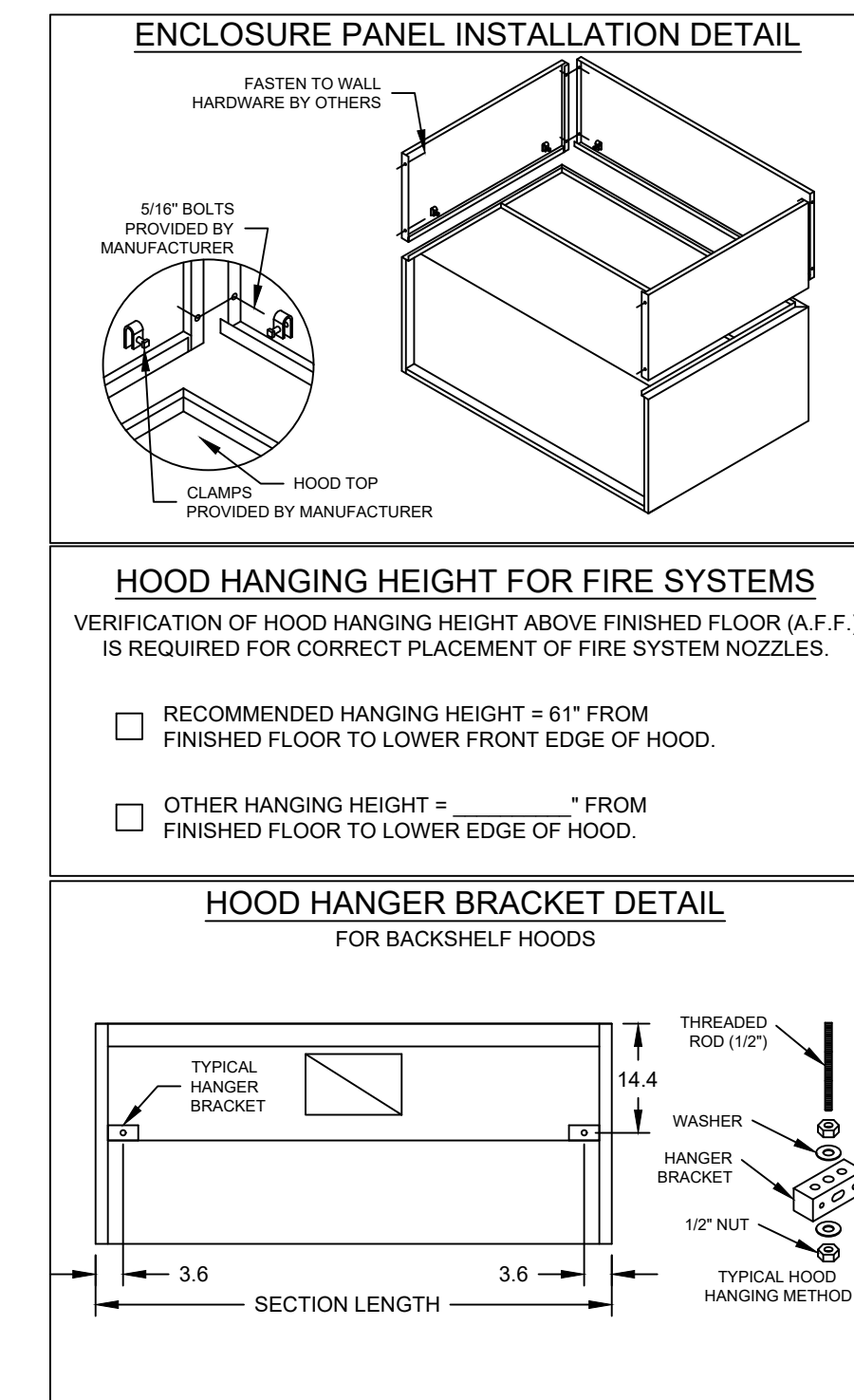
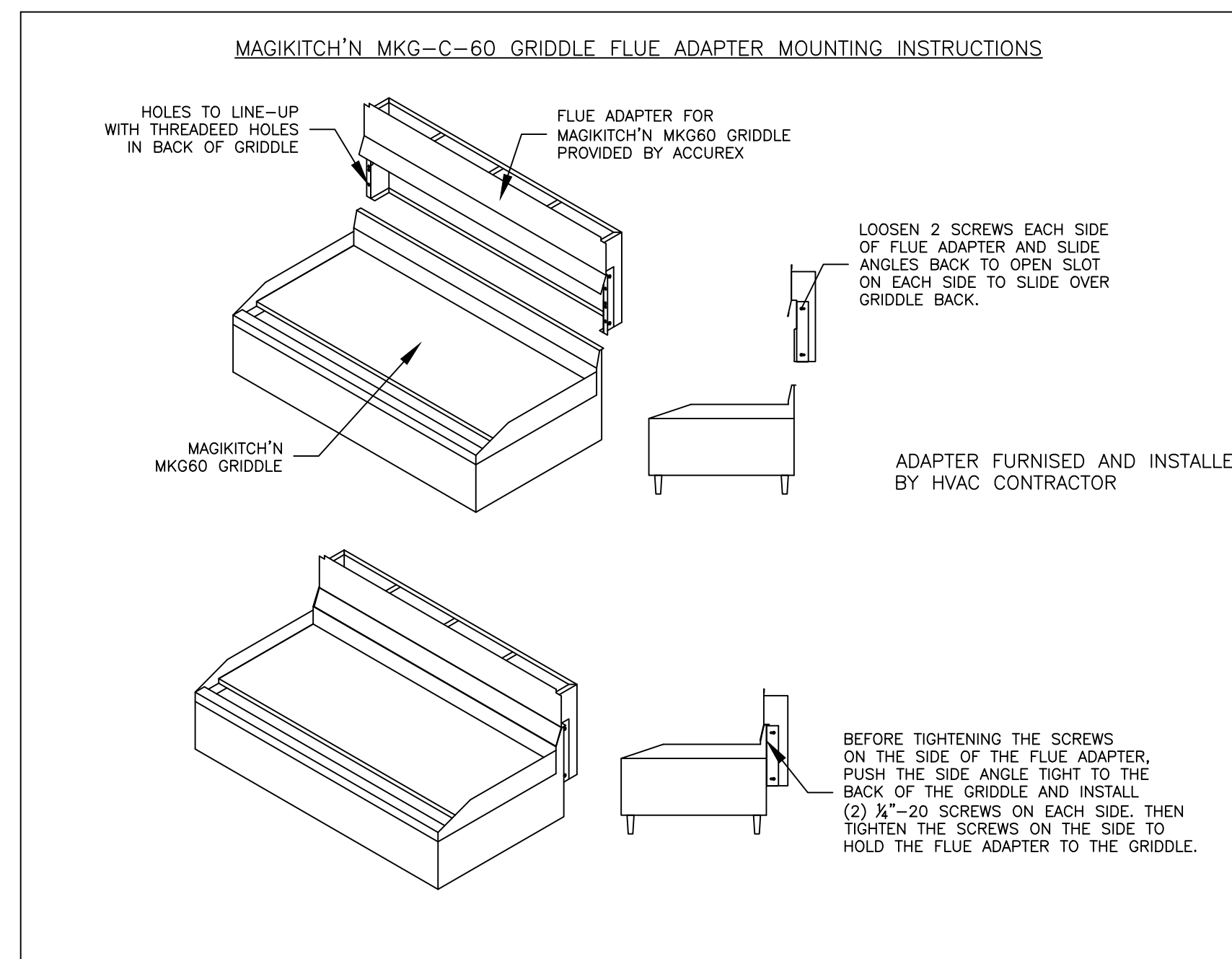
MUST USE WITH MAGIKITCH'N MODEL MKG-C-60
 VERIFY MAGIKITCHEN OR ANETS GRILL
 60" MAGIKITCH'N GRIDDLE FLUE ADAPTER



SECTION 1 ELEVATION VIEW



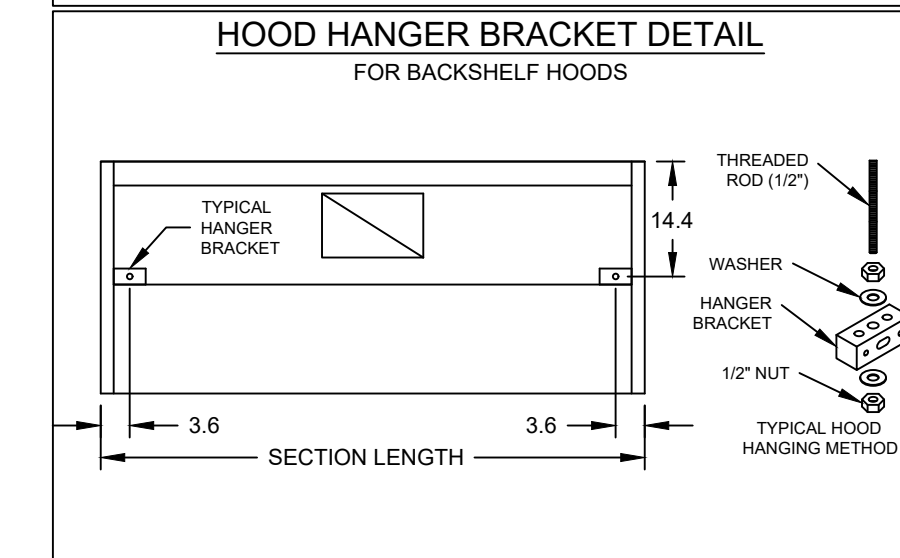
MARK: Griddle Hood SECTION VIEW



HOOD HANGING HEIGHT FOR FIRE SYSTEMS
 VERIFICATION OF HOOD HANGING HEIGHT ABOVE FINISHED FLOOR (A.F.F.) IS REQUIRED FOR CORRECT PLACEMENT OF FIRE SYSTEM NOZZLES.

RECOMMENDED HANGING HEIGHT = 61" FROM FINISHED FLOOR TO LOWER FRONT EDGE OF HOOD.

OTHER HANGING HEIGHT = " FROM FINISHED FLOOR TO LOWER EDGE OF HOOD.



ACCUREX

PROJECT 4/17/2025
 ACCUREX - WI, IA
 PHILLIP KRAFT
 PHILLIP.KRAFT@ACCUREX.COM
 262-227-7865

CULVERS - METROL 2021 (NC)
 1-27-2023
 GRIDDLE HOOD
 PRV-2 GRIDDLE FAN
 FIRE SUPPRESSION-GRIDDLE HOOD

MARK
 ACCUREX - WI, IA
 PHILLIP KRAFT
 PHILLIP.KRAFT@ACCUREX.COM
 262-227-7865

NEW CULVER'S RESTAURANT
 NE Park Street / Highway 70
 Okeechobee, FL 34973
 County of OKEECHOBEE

SEAL

OWNER:
 S & L Properties Okeechobee LLC
 2651 Kinking Court
 Portage, WI 53901
 Jeffrey J. Liegel, Realty Manager / Member
 608-742-2893

OLLMANN ASSOCIATES ARCHITECTS, P.C.
 200 South State Street
 Belvidere, Illinois 61008
 815-544-7790 Phone
 © OAA. All rights reserved. Any copying, transmission or disclosure subject to OAA written approval.

GRIDDLE HOOD/EXHAUST
 SCHEDULE & DETAILS

2023-010

Date: 01-29-2024
 Revision:

HOOD INFORMATION																	
HOOD NO.	MARK	MODEL	HOOD DIMENSIONS (IN.)			HOOD CONSTR.	COOKING LOAD / DUTY RATING	EXHAUST COLLAR(S)					SUPPLY		TOTAL WEIGHT LBS.	SECTION LOCATION	
			LENGTH	WIDTH	HEIGHT			TOTAL CFM	WIDTH	LENGTH	DIA.	CFM	S.P.	MUA CFM			AC CFM
1	FRYER HOOD	XXEP-83-S	83	TOP 23 BOT 3	FRT 12 BACK 36	430 SS WHERE EXPOSED	MEDIUM	1500	12	12		1500	0.518			169.1	SINGLE

HOOD INFORMATION														
HOOD NO.	MARK	LIGHTING DETAILS			GREASE FILTRATION DETAILS			UTILITY CABINET(S)						
		FIXTURE TYPE	BULB / LAMP INFO	QTY	FOOT CANDLES	TYPE / MODEL	MATERIAL	QTY	SIZE (IN.)	LOCATION	FIRE SYSTEM	SIZE	MODEL	CONTROLS
1	FRYER HOOD					X-TRACTOR	STAINLESS STEEL	5	16	16				

HOOD OPTIONS
UL 710 LISTED W/ OUT EXHAUST FIRE DAMPER - UL #R25625
BACK NON-INTEGRAL AIR SPACE - 3 IN WIDE
26 IN HIGH CEILING ENCLOSURES - FRONT LEFT RIGHT - FIELD INSTALLED
FACTORY MOUNTED EXHAUST COLLAR(S)
PERFORMANCE ENHANCING LIP (PEL) TECHNOLOGY
STANDING SEAM CONSTRUCTION FOR SUPERIOR STRENGTH

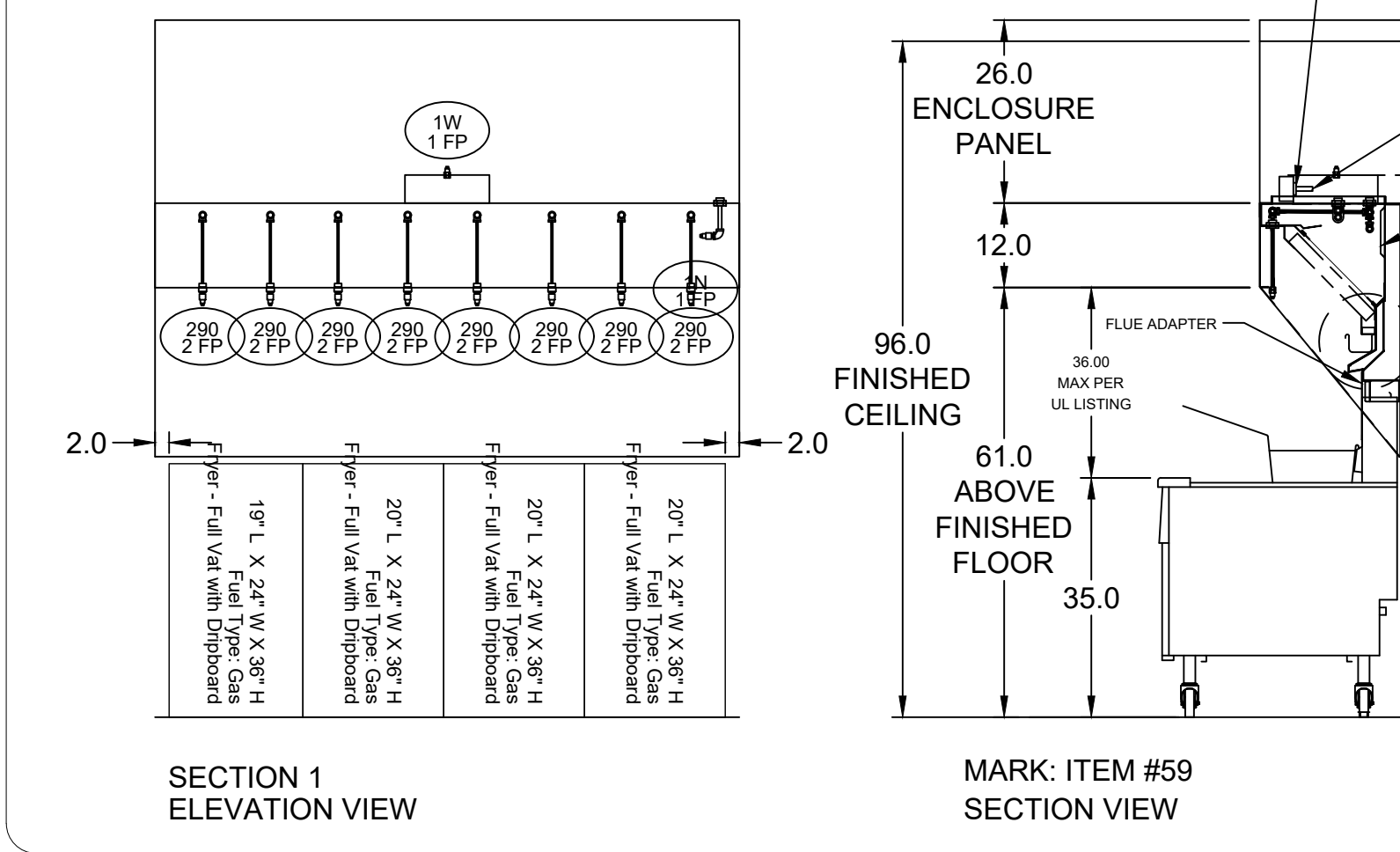
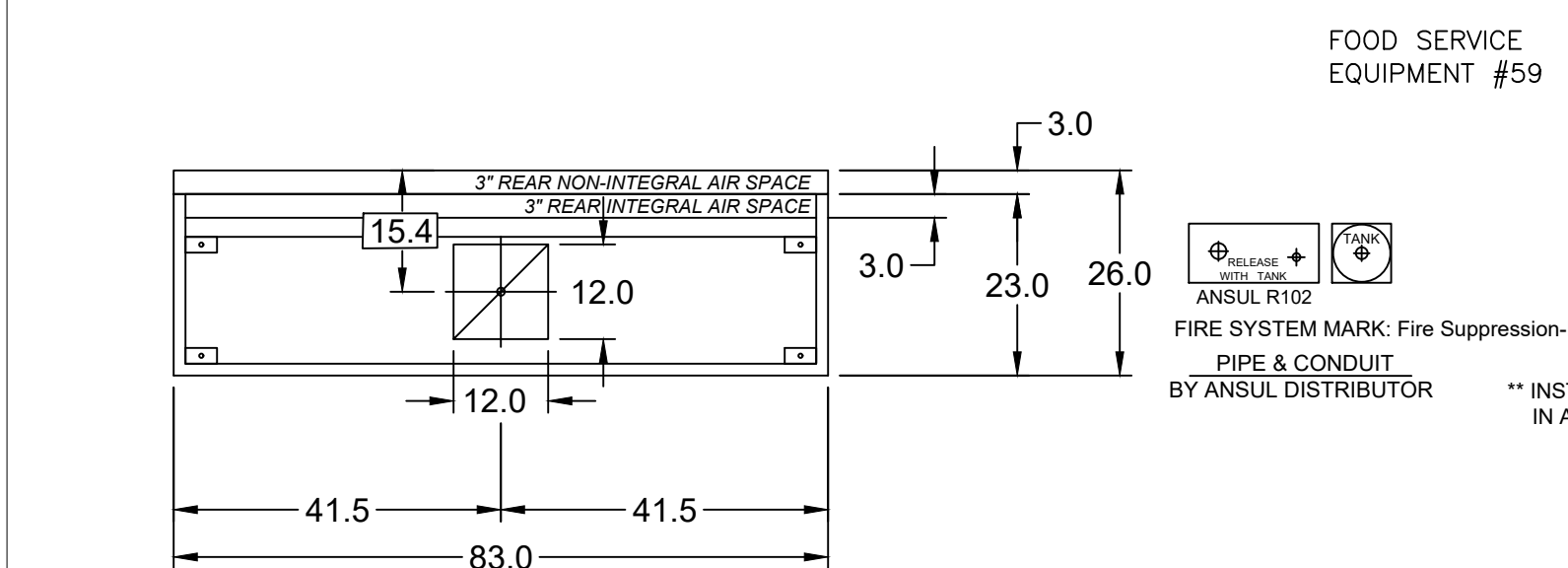
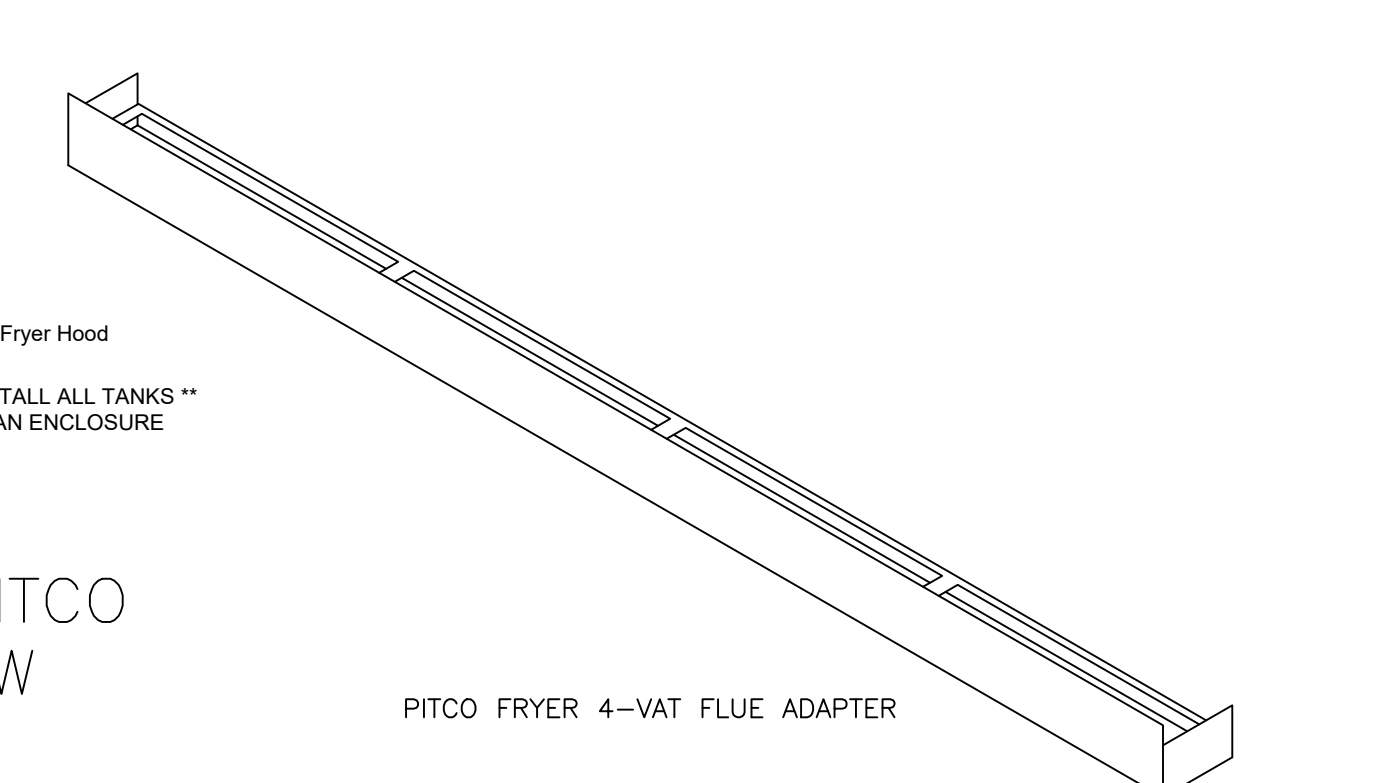
SPECIAL DESIGN REQUESTS
SDR #K1100559 - NEW PITCO 4L FRYER FLUE BYPASS SYSTEM
SDR #K1700974 - CULVERS 4VAT 2FIRE PROCESS - FRYER HOOD

Direct Drive Upblast Centrifugal Roof Exhaust Fan													
MARK INFORMATION				FAN INFORMATION					MOTOR INFORMATION				
QTY	MARK	MODEL	VOLUME (CFM)	TOTAL EXTERNAL SP (IN WG)	FAN RPM	OPERATING POWER (HP)	WEIGHT (LB.)	SIZE (HP)	V/C/P	ENCLOSURE	MOTOR RPM	WINDINGS	NEC FLA*
1	PRV-3 Fryer Fan	XCUE-140-VG	1,500	1	1,365	0.46	92	1	115/60/1	OP	1725	1	16

*NEC FLA - Based on table 430.250 or 430.248 of National Electrical Code 2020. Actual motor FLA may vary for sizing thermal overload, consult factory"

PRV-3 Fryer Fan - SELECTED OPTIONS AND ACCESSORIES

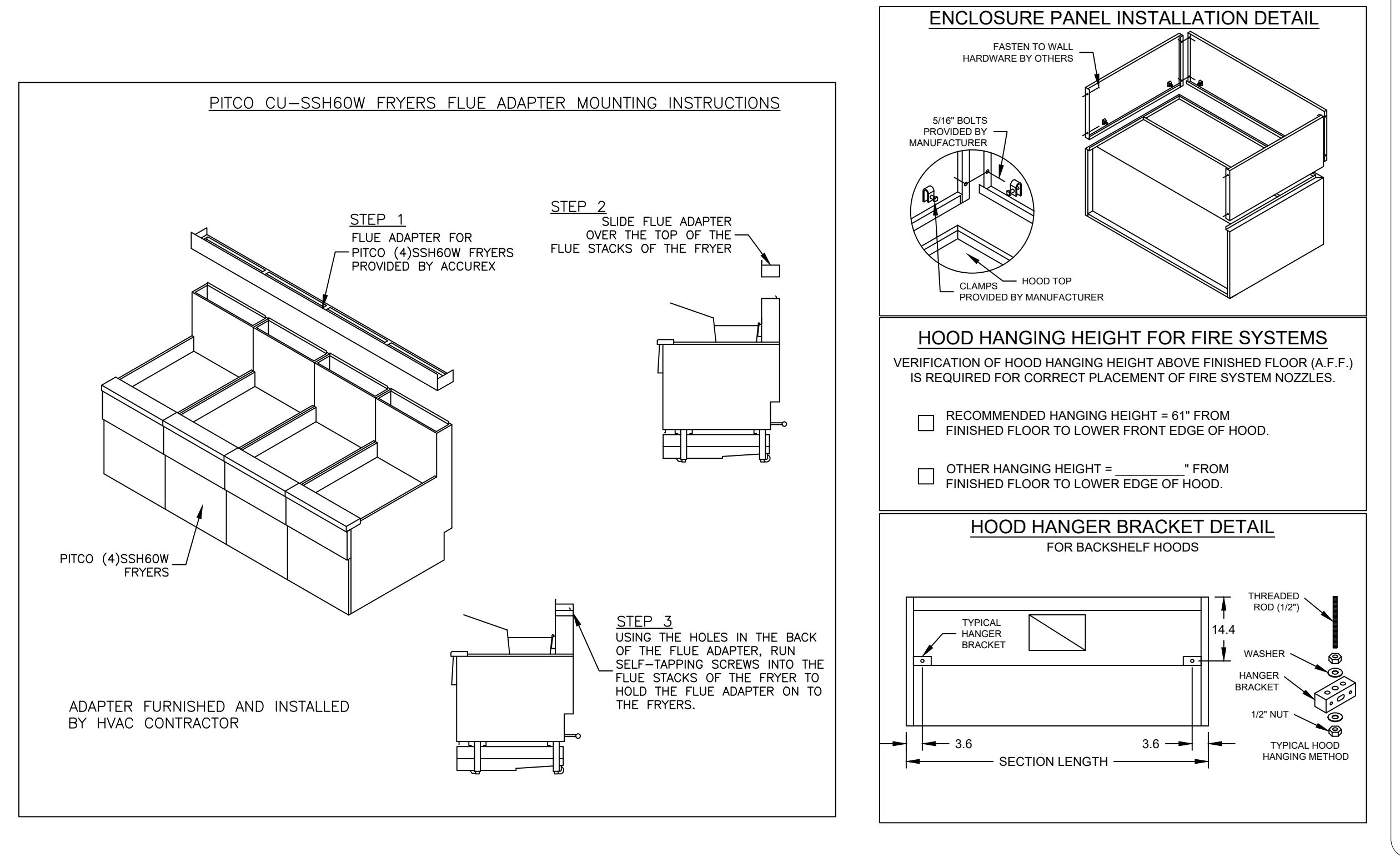
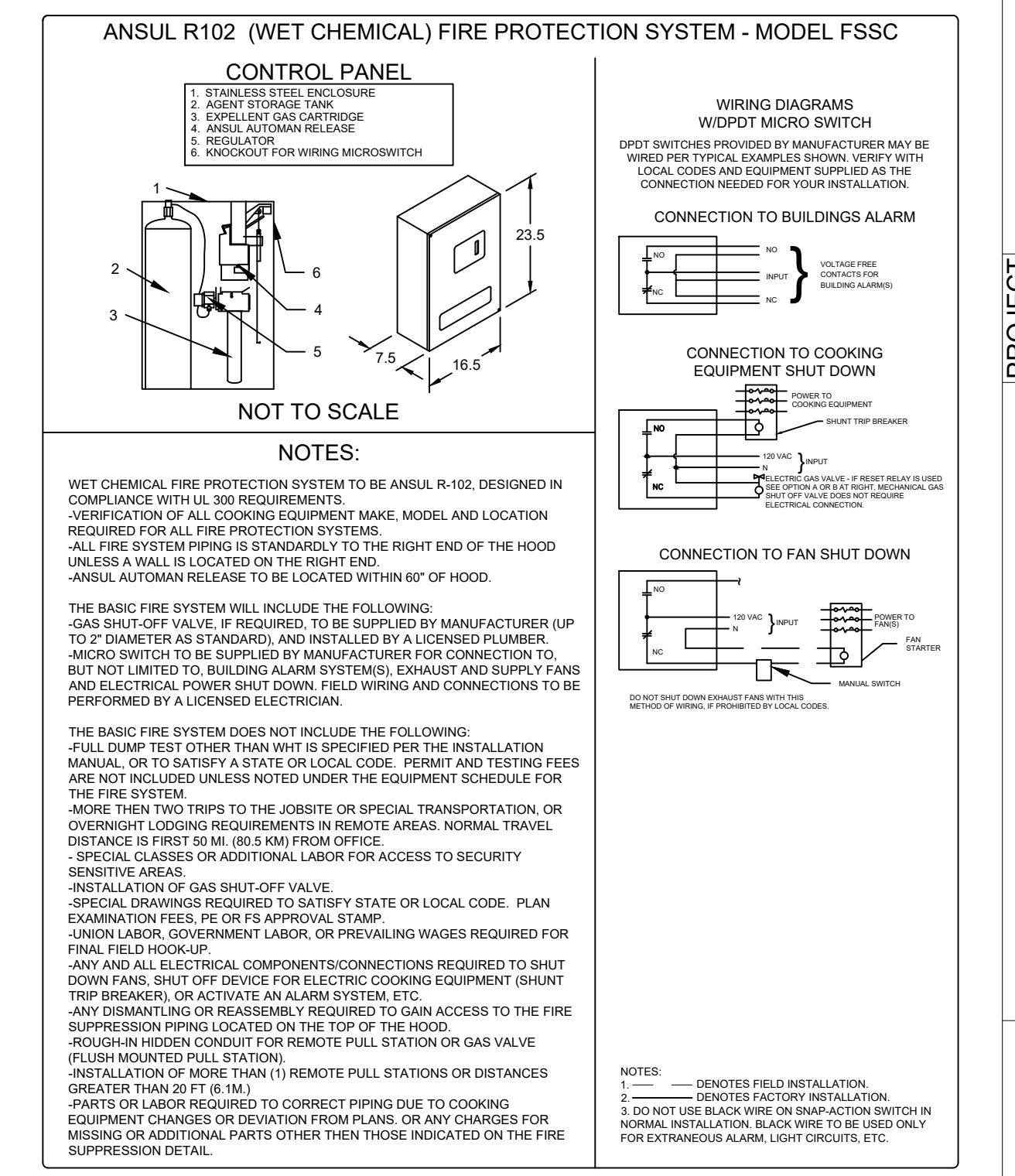
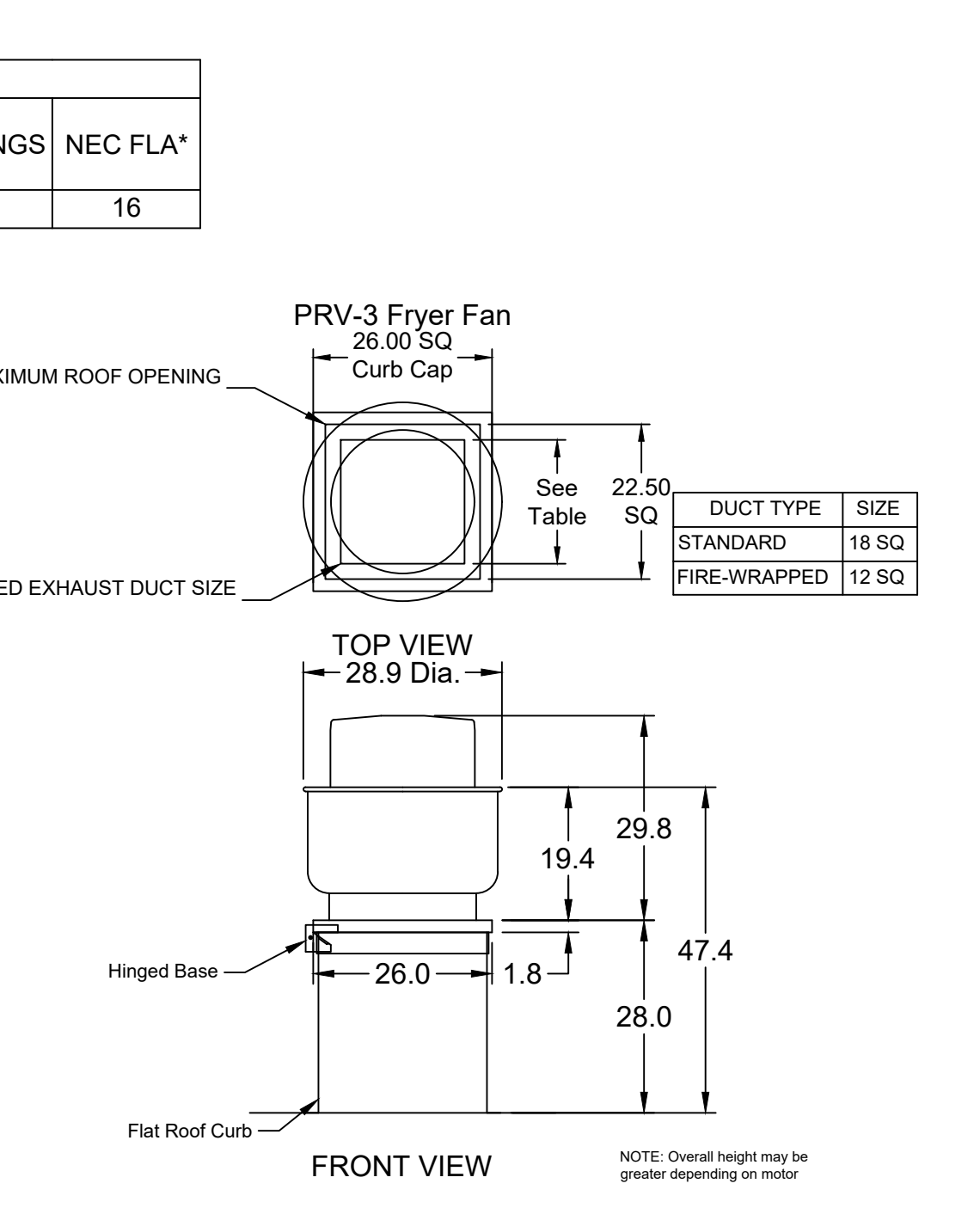
One piece fully welded windband
Tapered bushing wheel hub
Breather tube outlet area min. 4.4 sq. in. (sizes 99-480), 2.0 sq. in. (sizes 60-95)
Min. windband material thickness: 0.051" aluminum (060-240), 0.064" aluminum (240HP, 240XP), 0.080" aluminum (sizes 300-480)
Larger Curb Cap Size - 26 Square
UL/cUL 762 Listed - "Power Ventilators for Rest. Exh. Appliances"
Switch, NEMA-3R, Toggle, Shipped with Unit
Hinge, Factory Installed
High Temp Curb Seal Rated for Continuous Duty at 1500 F (Factory Attached)
Grease Trap (PN 475538)
Clean-out Port - Factory Installed



FIRE SYSTEM INFORMATION									
MARK	MODEL	LOCATION	FLOW POINTS HOODS	PCU	SUPPLY LINE	DETECTION	MARK(S) PROTECTED BY FIRE SYSTEM		
FIRE SUPPRESSION-FRYER HOOD	ANSUL R-102 WET CHEMICAL	REMOTE MOUNTED	18 UTILIZED 22 AVAILABLE		CONTINUOUS	FUSIBLE LINK	FRYER HOOD SECTION 1		

FIRE SYSTEM OPTIONS AND ACCESSORIES
FULL INSTALLATION (INCLUDES PRE-PIPED HOOD(S) WITH DETECTION AND FACTORY COORDINATED INSTALL)
CHROME SLEEVES FOR FACTORY PROVIDED APPLIANCES DROPS - INCLUDED
METAL BLOW-OFF CAPS - INCLUDED
GAS VALVE - INCLUDED - MECHANICAL SHUTOFF VALVE, 1.5", (ANSUL) - PART# ANSULMECHSHUTOFFVALVE150
HOOD SUPPRESSION TANK - INCLUDED - 6 GAL. - [(2) 3.0 TANK(S)]
REMOTE PULL STATION - STANDARD - FIELD INSTALLATION AT SINGLE POINT OF EGRESS
TANK ENCLOSURES (STAINLESS STEEL) FOR REMOTE MOUNTING - INCLUDED

SPECIAL DESIGN REQUESTS
SDR #K1700974 - CULVERS 4VAT 2FIRE PROCESS - FRYER HOOD
SDR #K1800795 - FIRE SYSTEM DEDUCT



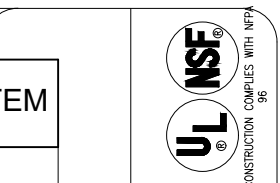
ACCUREX

PROJECT
4/7/2025

MARK

ACCUREX - WI, IA
PHILLIP KRAFT
PHILLIP.KRAFT@ACCUREX.COM
262-227-7865

FRYER HOOD
PRV-3 FRYER FAN
FIRE SUPPRESSION-FRYER HOOD



Ceiling Exhaust Fan

MARK INFORMATION		FAN INFORMATION						MOTOR INFORMATION				
QTY	MARK	MODEL	VOLUME (CFM)	TOTAL EXTERNAL SP (IN WG)	FAN RPM	OPERATING POWER (HP)	WEIGHT (LB.)	SIZE (HP)	V/C/P	ENCLOSURE	MOTOR RPM	WINDINGS
1	EF-1A	XCR-B80	75	0.125	881	0.01	10	0	115/60/1	OP	900	1

EF-1A : SELECTED OPTIONS AND ACCESSORIES

UL/cUL 507 Listed - Electric Fan
 Solid State Speed Control, 6 Amp, Mounted and Wired Internally
 Round Hooded Wall Cap, (PN: WC-6) Shipped Loose
 Round Duct Connection
 Adjustable easy installation mounting bracket
 Standard Grille
 Polypropylene Wheel Material
 Can Be Used to Comply with: ASHRAE 62.2 and Washington State Energy Code

SPECIAL DESIGN REQUESTS
 (1)-WC-4 Wall Cap (F1600858)

Direct Drive Centrifugal Roof Exhaust Fan

MARK INFORMATION		FAN INFORMATION						MOTOR INFORMATION					
QTY	MARK	MODEL	VOLUME (CFM)	TOTAL EXTERNAL SP (IN WG)	FAN RPM	OPERATING POWER (HP)	WEIGHT (LB.)	SIZE (HP)	V/C/P	ENCLOSURE	MOTOR RPM	WINDINGS	NEC FLA*
1	PRV-1 Restroom	XRED-090-VG	375	0.5	1,466	0.06	40	0.1	115/60/1	TN	1725	1	NA

*NEC FLA - Based on table 430.250 or 430.248 of National Electrical Code 2020. Actual motor FLA may vary for sizing thermal overload, consult factory

PRV-1 Restroom : SELECTED OPTIONS AND ACCESSORIES

Standard Curb Cap Size - 17 Square
 UL/cUL 705 Listed - "Power Ventilators"
 Switch, NEMA-1, Toggle, Shipped with Unit
 Hinge, Factory Installed
 Damper Shipped Loose, BD-100-PB-10X10, Gravity Operated, Not Coated
 Birdscreen: Galvanized, nom. 84% Free Area
 Composite Wheel Material

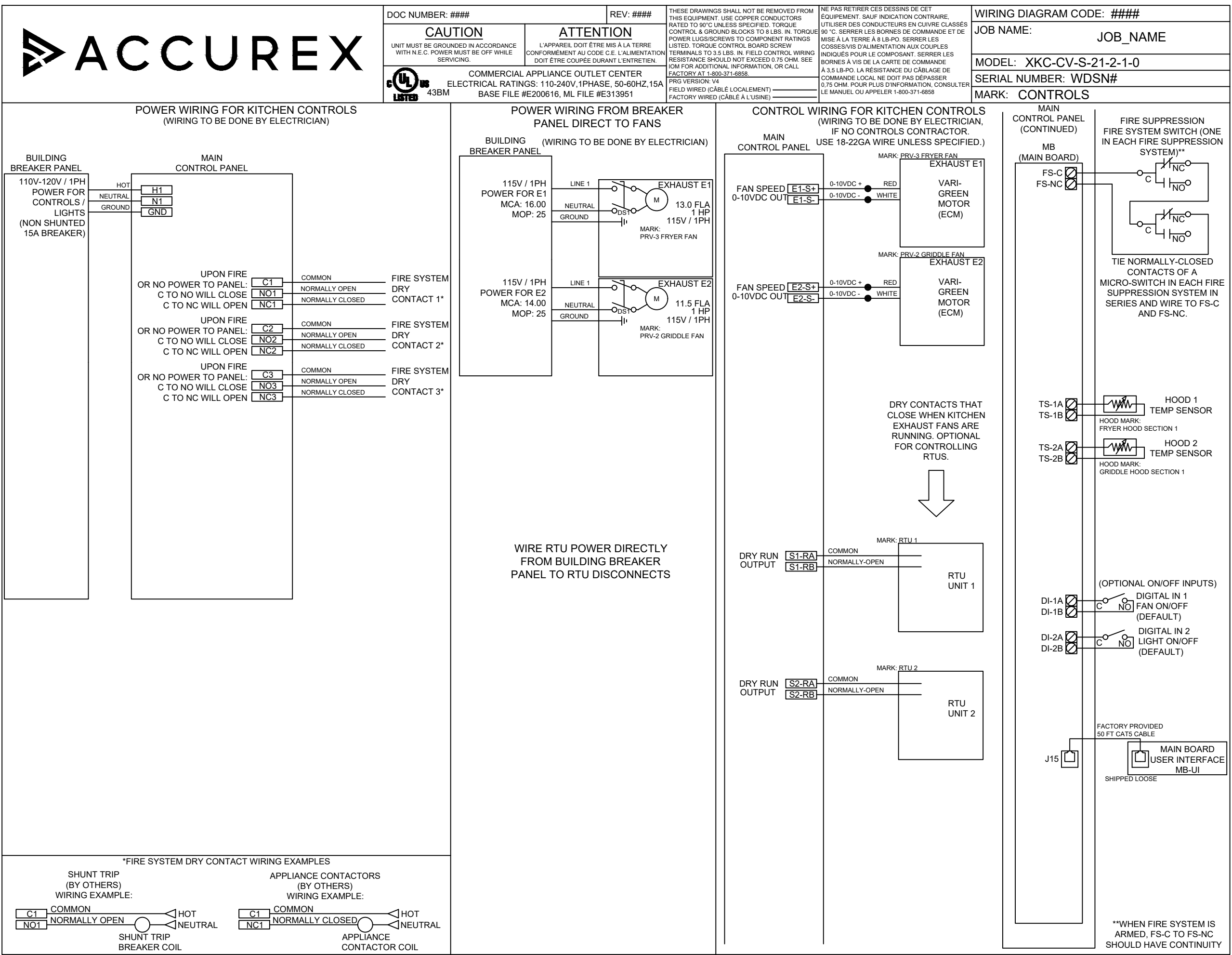
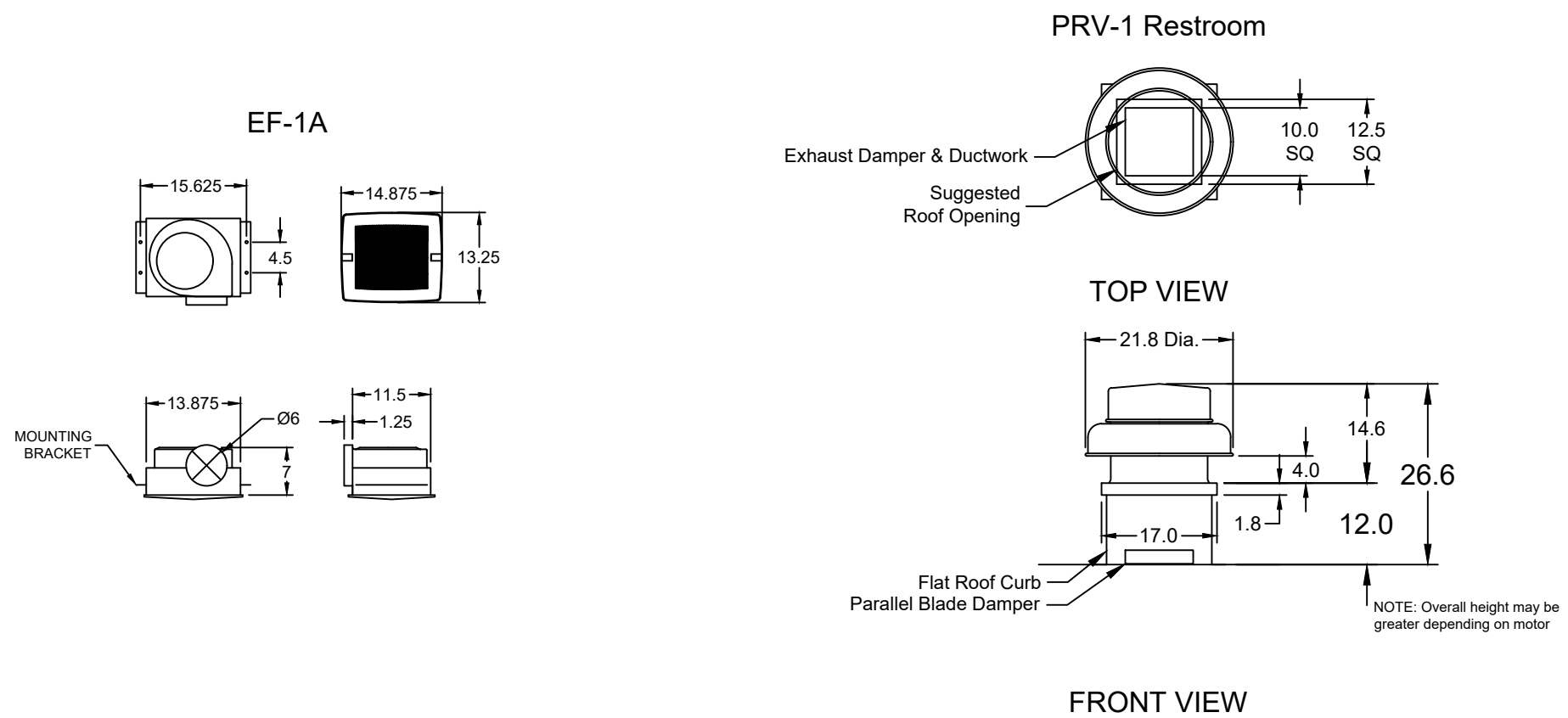
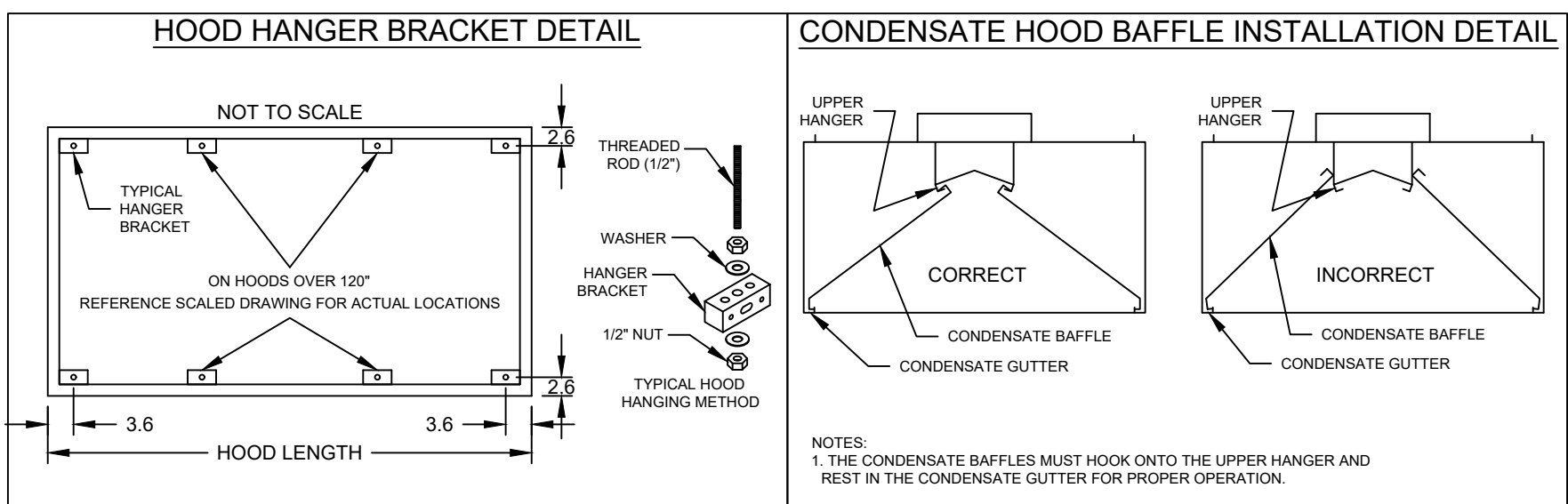
CONTROL INFORMATION

MARK	ELECTRICAL CONTROL PACKAGE		USER INTERFACE	
	MODEL	LOCATION	TYPE	LOCATION
CONTROLS	XKC-CV-S-22-2-1-0	SHIP LOOSE ENCLOSURE	FULL COLOR TOUCHSCREEN	SHIP LOOSE

FANS CONTROLLED											
FAN #	TYPE	FAN	FAN MARK	ZONE	CFM	MOTOR HP	MOTOR VOLT	CYCLE	MOTOR PHASE	MOTOR STARTER IN PANEL	VFD IN PANEL
1	SUPPLY	S1	RTU-1	1	1500	1	208	60	3	NO	NO
2	SUPPLY	S2	RTU-2	2	1500	1	208	60	3	NO	NO
3	EXHAUST	E1	PRV-2 GRIDDLE FAN	2	1497	1	115	60	1	NO	NO
4	EXHAUST	E2	PRV-3 FRYER FAN	1	1500	1	115	60	1	NO	NO

CONTROL FEATURES
 TEMP SENSORS (FACTORY INSTALLED) - QTY. 2
 DRY FIRE CONTACTS - QTY. 2
 EXHAUST MAX DURING FIRE
 SUPPLY OFF DURING FIRE

SPECIAL DESIGN REQUESTS
 SDR #K2000462 - CULVERS CONTROL PANEL - EXTRA SET OF FIRE CONTACTS - REVISE WIRING DIAGRAMS



ACCUREX

PROJECT: 4/7/2025
 MARK: ITEM 25 CONDENSATE HOOD PRV-1 RESTROOM CONTROLS

CULVERS - METROL 2021 (NC)
 1.27.2023

ACCUREX - W/L/A
 PHILLIP KRAFT
 PHILLIP.KRAFT@ACCUREX.COM
 262-227-7865

OWNER:
 S & L Properties Okeechobee LLC
 2651 Kinking Court
 Portage, WI 53901
 Jeffrey J. Liegel, Realty Manager / Member
 608-742-2893

OLLMANN ASSOCIATES ARCHITECTS, P.C.
 200 South State Street
 Belvidere, Illinois 61008
 815-544-7790 Phone
 © OAA. All rights reserved. any copying, transmission or disclosure subject to OAA written approval.

FAN SCHEDULE & DETAILS

Date: 01-29-2024
 Revision:

2023-010
 M204

© 2026

NEW CULVERS RESTAURANT
 NE Park Street / Highway 70
 Okeechobee, FL 34973
 County of OKEECHOBEE

SEAL