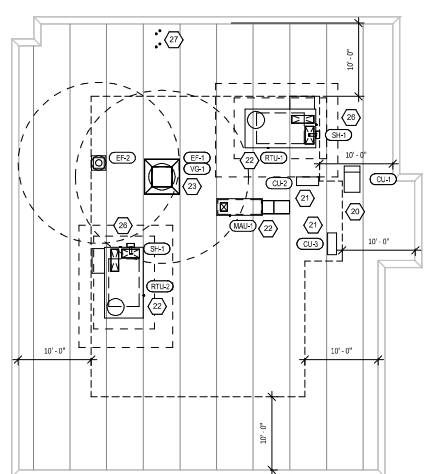
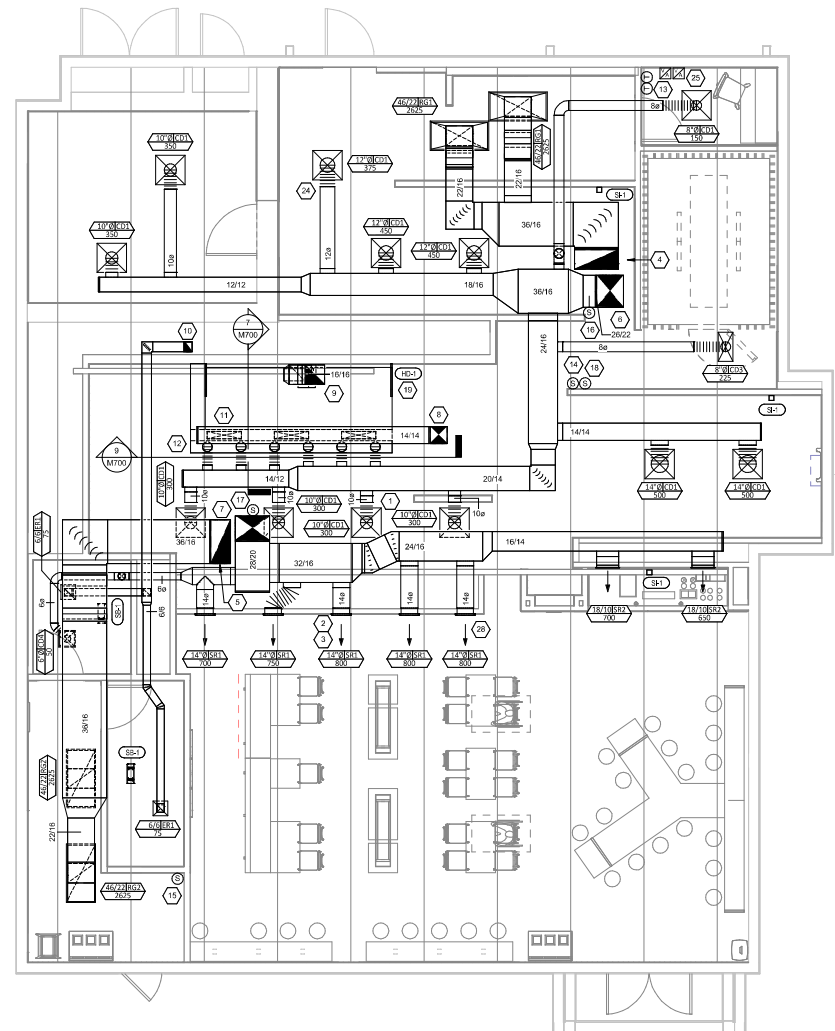


HVAC PLAN NOTES

1. SEE ARCHITECTURAL REFLECTED CEILING PLAN FOR CEILING MOUNTED EQUIPMENT LOCATION. TYPICAL.
2. PAINT DUCTWORK VISIBLE THROUGH DINING ROOM SUPPLY REGISTERS AND RETURN GRILL BLACK. TYPICAL.
3. REFER TO ARCHITECTURAL SHEETS FOR SUPPLY REGISTER ELEVATIONS AND LOCATIONS.
4. 36/16 DUCT UP FOR TRANSITION TO RETURN CONNECTION IN ROOF CURB. RTU-1 SHALL HAVE AN INTEGRAL SMOKE DETECTOR MOUNTED IN THE RETURN AIR STREAM. INTERLOCK SMOKE DETECTOR TO RTU-1 OPERATION.
5. 36/16 DUCT UP FOR TRANSITION TO RTU-2 RETURN CONNECTION IN ROOF CURB. RTU-2 SHALL HAVE AN INTEGRAL SMOKE DETECTOR MOUNTED IN THE RETURN AIR STREAM. INTERLOCK SMOKE DETECTOR TO RTU-2 OPERATION.
6. 28/23 DUCT UP FROM BUILDING SUPPLY THROUGH ROOF. TRANSITION TO RTU-1 SUPPLY CONNECTION IN ROOF CURB.
7. 28/20 DUCT UP FROM BUILDING SUPPLY TO RTU-2 SUPPLY CONNECTION. TRANSITION IN ROOF CURB.
8. 14/14 DUCT UP THROUGH ROOF. TRANSITION TO MAU-1 SUPPLY CONNECTION IN ROOF CURB.
9. 16/16 DUCT UP FROM HOOD THROUGH ROOF TO EF-1 COMPLIANT WITH NFPA 96. PROVIDE RADIUSSED ELBOWS WITH AN INSIDE RADIUS OF 0.5W AT ELBOWS IN GREASE DUCT.
10. 8/6 DUCT UP THROUGH ROOF TO EF-2.
11. 28/6 DUCT DOWN TO MAKEUP AIR PSP DUCT CONNECTION. TRANSITION TO SUPPLY PLENUM OPENING SIZE. TYPICAL FOR 3.
12. 8" DIA. DUCT DOWN TO AC PSP DUCT CONNECTION. TRANSITION TO SUPPLY PLENUM OPENING SIZE. TYPICAL CAP UNUSED DUCT CONNECTIONS.
13. INSTALL SINGLE GANG VERTICAL 1/80" GRIDPOINT THERMOSTATS FURNISHED BY TEMS FOR RTU-1 AND RTU-2 AT THIS LOCATION AT 48" AFF. COORDINATE WITH ELECTRICAL SWITCHING IN THIS AREA. PROVIDE WIRING AS SHOWN IN DETAIL 8/E/10.
14. INSTALL GRIDPOINT ZONE SENSOR MODULE FURNISHED BY TEMS FOR RTU-1 AT THIS LOCATION 60" AFF DIRECTLY TO WALL (NO JUNCTION BOX). COORDINATE LOCATION WITH EQUIPMENT. PROVIDE WIRING AS SHOWN IN DETAIL 8/E/10.
15. INSTALL GRIDPOINT ZONE SENSOR MODULE FURNISHED BY TEMS FOR RTU-2 AT THIS LOCATION 66" AFF DIRECTLY TO WALL (NO JUNCTION BOX). COORDINATE LOCATION WITH EQUIPMENT. PROVIDE WIRING AS SHOWN IN DETAIL 8/E/10.
16. INSTALL GRIDPOINT SUPPLY PROBE FURNISHED BY TEMS FOR RTU-1 IN THE SUPPLY DUCTWORK UPSTREAM FROM THE FIRST BRANCH CONNECTION. PROVIDE WIRING AS SHOWN IN DETAIL 8/E/10.
17. INSTALL GRIDPOINT SUPPLY PROBE FURNISHED BY TEMS FOR RTU-2 IN THE SUPPLY DUCTWORK UPSTREAM FROM THE FIRST BRANCH CONNECTION. PROVIDE WIRING AS SHOWN IN DETAIL 8/E/10.
18. INSTALL REMOTE TEMPERATURE SENSOR FOR HOOD HD-1 AT THIS LOCATION 60" AFF. COORDINATE LOCATION WITH EQUIPMENT. PROVIDE (2) #18 G. THERMISTOR CABLE FROM TEMPERATURE SENSOR TO HOOD CONTROL PANEL.
19. INSTALL KITCHEN HOOD, HD-1. SUPPORT HOOD PER MANUFACTURER'S INSTALLATION INSTRUCTIONS AND AS DETAILED IN THE ARCHITECTURAL AND STRUCTURAL DRAWINGS. INSTALL HOOD ACCORDING TO THE REQUIREMENTS OF ITS LISTING, IN COMPLIANCE WITH NFPA 96, THE BUILDING CODE, AND AUTHORITIES HAVING JURISDICTION. HOOD SHALL HAVE AN INTEGRAL DUCT COLLAR TEMPERATURE SENSOR TO AUTOMATICALLY ENERGIZE THE EXHAUST AND MAKEUP AIR FANS IF COOKING TEMPERATURES ARE DETECTED. EXHAUST DUCT SYSTEM TO BE WELDED OR FACTORY MANUFACTURED WATER AND AIR TIGHT. INSTALL CLEANOUTS PER CODE AND AS SHOWN. INSTALL HOOD PER DETAILS 2, 4, AND 9/M700. CHIPOTLE WILL PROVIDE AN INDEPENDENT TESTING AGENCY FOR TESTING THE INTEGRITY OF THE GREASE DUCT SYSTEM.
20. INSTALL REMOTE CONDENSING UNIT FOR WALK-IN COOLER ON ROOF AS DETAILED IN THE ARCHITECTURAL AND STRUCTURAL DRAWINGS. INSTALL REFRIGERANT LINE SET, THERMOSTATIC EXPANSION VALVE, SOLENOID VALVE, TEMPERATURE CONTROL, SIGHT GLASS, FILTER DRIER, PRESSURE CONTROL, LOW AMBIENT CONTROLS, AND WEATHERPROOF HOUSING. TRAP AND SLOPE REFRIGERANT LINES PER MANUFACTURER'S RECOMMENDATIONS. INSTALLATION SHALL COMPLY WITH ASHRAE/JANSI STANDARD 15. INSTALL THE REFRIGERANT LINE SET UNDER THE ROOF DECK TO WITHIN 3" OF THE CONDENSING UNIT. CUT 2-1/2" HOLE IN WALK-IN COOLER ROOF FOR REFRIGERANT LINE SET AND SEAL PER THE COOLER MANUFACTURER'S INSTALLATION INSTRUCTIONS AFTER LINE SET IS INSTALLED.
21. INSTALL REMOTE CONDENSER FOR IC₁ MACHINE ON ROOF AS DETAILED IN THE ARCHITECTURAL AND STRUCTURAL DRAWINGS. INSTALL REFRIGERANT LINE SET, THERMOSTATIC EXPANSION VALVE, SOLENOID VALVE, TEMPERATURE CONTROL, SIGHT GLASS, FILTER DRIER, PRESSURE CONTROL, LOW AMBIENT CONTROLS, AND WEATHERPROOF HOUSING. TRAP AND SLOPE REFRIGERANT LINES PER MANUFACTURER'S RECOMMENDATIONS. SEAL PIPING PENETRATIONS THROUGH ROOF. INSTALLATION SHALL COMPLY WITH ASHRAE/JANSI STANDARD 15. INSTALL THE REFRIGERANT LINE SET UNDER THE ROOF DECK TO WITHIN 3" OF THE REMOTE CONDENSER. IF REFRIGERANT PIPING TO ICE MAKER IS EXPOSED TO PUBLIC VIEW CONCEAL WITHIN A STAINLESS STEEL SHROUD AS SHOWN IN THE ARCHITECTURAL DRAWINGS.
22. INSTALL ROOFTOP EQUIPMENT PER MANUFACTURER'S INSTALLATION INSTRUCTIONS AND AS DETAILED IN THE ARCHITECTURAL AND STRUCTURAL DRAWINGS.
23. INSTALL EXHAUST FAN EF-1 PER DETAIL 5/M700 AND AS DETAILED IN THE ARCHITECTURAL AND STRUCTURAL DRAWINGS. INSTALL GREASE VIRGROUARD SYSTEM FURNISHED BY CHIPOTLE ON EXHAUST FAN, EF-1.
24. PROVIDE SUPPLY DIFFUSER CONNECTION TO SUPPLY SYSTEM PER DETAIL 1/M700. TYPICAL.
25. PROVIDE AUDIO/VISUAL REMOTE SMOKE DETECTOR ANNUNCIATOR WITH REMOTE KEY OPERATED RESET. WIRE A UNIT BACK TO EACH SMOKE DETECTOR. MOUNT UNIT 60" AFF. TYPICAL.
26. INSTALL REME HALO AIR PURIFIER FURNISHED BY TLV IN RTU PER DETAIL 6/M700. SEE ELECTRICAL DRAWINGS FOR POWER CONNECTION INFORMATION. INSTALL UV WARNING STICKERS ON FACE OF ENCLOSURE PER DETAIL AND ON ANY RTU ACCESS DOOR(S) THROUGH WHICH THE REME HALO WOULD BE VISIBLE IF OPENED.
27. MAINTAIN 10" CLEARANCE BETWEEN WATER HEATER FLUE TERMINATION AND OUTSIDE AIR INTAKES. MAINTAIN 10" CLEARANCE BETWEEN WATER HEATER COMBUSTION AIR INTAKE AND EXHAUST FAN EF-1 DISCHARGE. SEE PLUMBING DRAWINGS FOR MORE INFORMATION ON WATER HEATER FLUE AND COMBUSTION AIR TERMINATIONS.
28. ADJUST SUPPLY REGISTERS SO THAT SUPPLY AIR HITS WALL ON OPPOSITE SIDE OF ROOM AT APPROXIMATELY 7' AFF WITH NO DRAFTS FELT IN THE DINING ROOM.



HVAC ROOF PLAN
1/8" = 1'-0"



HVAC FLOOR PLAN
3/4" = 1'-0"

Consultant:

NATIONAL
 4635 Trueman Blvd, Suite 250
 Hilliard, Ohio 43026
 Phone: (614) 751-9610
 Fax: (614) 552-5240
 Contact: DENNIS ALT
 (614) 595-0599
 DALT@nationalengineering.com

FOR CONSTRUCTION

COPYRIGHT 2025
 THIS DRAWING IS AN INSTRUMENT OF SERVICE
 AND AS SUCH REMAINS THE PROPERTY OF
 CHIPOTLE MEXICAN GRILL, INC. PERMISSION FOR
 USE OF THIS DOCUMENT IS LIMITED AND CAN BE
 EXTENDED BY WRITTEN AGREEMENT WITH
 CHIPOTLE MEXICAN GRILL, INC.



CHIPOTLE MEXICAN GRILL, INC.
 #0030832059
 COLUMBUS, OH 43219-2966
 TELEPHONE: 614.751.9610
 INTERNET: WWW.CHIPOTLE.COM

STORE NO.: 5498
 TAMPA STADIUM / FL
 2708 W DR. MARTIN LUTHER KING JR.
 BLVD.
 TAMPA, FL 33607

Issue Record	DATE	DESCRIPTION
11/09/2024	LL REVIEW	
11/07/2024	ISSUE FOR PERMIT	
03/06/2025	ISSUE FOR PERMIT	

Drawn	Checked
MKT	DAW

Project No:
2401185

HVAC PLAN

M100

GRILLS, REGISTERS, AND DIFFUSERS SCHEDULE

TAG	DESCRIPTION	FACE SIZE	MATERIAL	FINISH	MOUNTING	FURNISHED BY	INSTALLED BY	BASIS FOR DESIGN		NOTES
								MANUFACTURER	MODEL	
CD1	PERFORATED CEILING DIFFUSER	24" X 24"	ALUMINUM	WHITE	LAY-IN CEILING	GC	GC	NAILOR	4320A TYPE L	PROVIDE INTEGRAL OBD
CD3	PERFORATED CEILING DIFFUSER	24" X 12"	ALUMINUM	WHITE	LAY-IN CEILING	GC	GC	NAILOR	4320A TYPE L	PROVIDE INTEGRAL OBD, REMOVE 4-WAY DEFLECTOR
CD4	PERFORATED CEILING DIFFUSER	12" X 12"	ALUMINUM	WHITE	GYP CEILING	GC	GC	NAILOR	4320A TYPE S	PROVIDE INTEGRAL OBD
ER1	PERFORATED CEILING EXHAUST	12" X 12"	ALUMINUM	WHITE	GYP CEILING	GC	GC	NAILOR	4330R TYPE S	PROVIDE INTEGRAL OBD
RE1	PERFORATED CEILING RETURN	48" X 24"	ALUMINUM	WHITE	LAY-IN CEILING	GC	GC	NAILOR	4330R TYPE L	
RE2	PERFORATED CEILING RETURN	48" X 24"	ALUMINUM	WHITE	GYP CEILING	GC	GC	NAILOR	4330R TYPE S	
SR1	ADJUSTABLE TURBO NOZZLE	SEE NECK SIZE	ALUMINUM	WHITE	WALL	GC	GC	AIR CONCEPTS	ANR-14	PROVIDE FACE-ACCESSIBLE OBD
SR2	SINGLE DEFLECTION SUPPLY REGISTER	SEE NECK SIZE	ALUMINUM	WHITE	WALL	GC	GC	NAILOR	51SH	PROVIDE INTEGRAL OBD

SANITIZING EQUIPMENT SCHEDULE

TAG	COUNT	DESCRIPTION	FURNISHED BY	INSTALLED BY	BASIS FOR DESIGN		REMARKS
					MANUFACTURER	MODEL	
SH-1	2	BATHROOM AIR PURIFICATION UNIT	TUV	GC	RGF ENVIRONMENTAL GROUP	BRU ASSEMBLY	SEE ELECTRICAL SHEETS FOR CONNECTION INFORMATION
SH-1	2	HVAC AIR PURIFICATION UNIT	TUV	GC	RGF ENVIRONMENTAL GROUP	REME HALO	SEE DETAIL 67/M700 FOR INSTALLATION INFORMATION
SI-1	3	ICE MACHINE TREATMENT SYSTEM	TUV	GC	RGF ENVIRONMENTAL GROUP	IMS-B-GA	SEE PLUMBING DRAWINGS FOR INSTALLATION INFORMATION

VIROGUARD SCHEDULE

TAG	QUANTITY	DESCRIPTION	DUCT CONNECTION SIZE	FAN	FURNISHED BY	INSTALLED BY	BASIS FOR DESIGN MANUFACTURER
VG-1	1	HURRICANE RATED VIROGUARD HOOD EXHAUST FAN ROOFTOP CONTAINMENT SYSTEM	16" X 16"	CAPTIVE-AIRE DUL180HFA	TDC	GC	ENVIRONMENTAL

FAN SCHEDULE

TAG	DRIVE TYPE	EXHAUST FLOW [CFM]	E.S.P. [IN. W.C.]	WEIGHT [lbs]	ELECTRICAL		FURNISHED BY	INSTALLED BY	BASIS FOR DESIGN		REMARKS
					MOTOR POWER	V/P/H			MANUFACTURER	MODEL	
EF-1	DIRECT	2550 CFM	1.20 in-wg	400	2	208/3/60	HS	GC	CAPTIVE-AIRE	DUL180HFA	FURNISHED WITH DISCONNECT AND VENTED ROOF CURB
EF-2	DIRECT	150 CFM	0.60 in-wg	100	0.18 HP	120/2/60	HS	GC	CAPTIVE-AIRE	DR12HFA	FURNISHED WITH DISCONNECT, VARIABLE SPEED CONTROLLER, BACKDRAFT DAMPER AND ROOF CURB

MAKEUP AIR UNIT SCHEDULE

TAG	DESCRIPTION	AIRFLOW		HEATING CAPACITY			APPROXIMATE WEIGHT [lbs]	ELECTRICAL		FURNISHED BY	INSTALLED BY	BASIS FOR DESIGN		REMARKS	
		SUPPLY FLOW [CFM]	E.S.P. [IN. W.C.]	INPUT [MBH]	OUTPUT [MBH]	MAXIMUM TURNDOWN		EAT	MOTOR POWER			V/P/H	MANUFACTURER		MODEL
MAU-1	MAKEUP AIR UNIT	1300	0.80	225	220	12.5:1	36 'F	650	1 HP	208/3/60	HS	GC	CAPTIVE-AIRE	A1-D-250-15D	FURNISHED WITH DISCONNECT, ROOF CURB, SCREEN INTAKE, AND WASHABLE ALUMINUM FILTERS

CONDENSING UNIT SCHEDULE

TAG	DESCRIPTION	NOMINAL CAPACITY [TONS]	NUMBER OF COMPRESSORS	NUMBER OF CIRCUITS	REFRIGERANT TYPE	REFRIGERANT CHARGE	WEIGHT [lbs]	ELECTRICAL			FURNISHED BY	INSTALLED BY	BASIS FOR DESIGN		REMARKS
								MOCQ	FLA	V/P/H			MANUFACTURER	MODEL	
CJ-1	WALK-IN COOLER REMOTE CONDENSING UNIT	--	1	1	R-404A		200	15 A	6.5 A	208/3/60	WCS	GC	HARFORD	PC195MOP-3	FURNISHED WITH WALK-IN COOLER
CJ-2	ICE MAKER - REMOTE CONDENSER	--	0	1	R-404A	11 lbs 7.4 oz	100			120/2/60	KES	GC	-	-	FURNISHED WITH ICE MAKER
CJ-3	ICE MAKER - REMOTE CONDENSER	--	0	1	R-404A	11 lbs 7.4 oz	100			120/2/60	KES	GC	-	-	FURNISHED WITH ICE MAKER

KITCHEN HOOD SCHEDULE

TAG	DESCRIPTION	MAX COOKING TEMP.	EXHAUST PLENUM					PERFORATED SUPPLY PLENUMS										BASIS FOR DESIGN		REMARKS						
			AIRFLOW [CFM]	SP [IN. W.C.]	DUCT COLLARS			WIDTH	LENGTH	MAU PLENUM		AC PLENUM		NUMBER OF LIGHT FIXTURES	APPROXIMATE WEIGHT [lbs]	FURNISHED BY	INSTALLED BY	MANUFACTURER	MODEL							
					NO.	WIDTH	LENGTH			AIRFLOW [CFM]	DUCT COLLARS NO.	DIAMETER														
HD-1	TYPE I CANOPY HOOD WITH PERFORATED MAU AND AC SUPPLY PLENUMS	600°F	2550	0.97	1	10"	24"	12" x 9"	4" x 3"	0.1	13' x 9"	10"	1300	5	6"	28"	700	6	8"	8	1100	HS	GC	CAPTIVE-AIRE	6424 NO. 2 ACPS9 F	MAT'L: 18 GA. TYPE 430 SS. PROVIDE WITH VERTICAL END PANELS, 16" TALL HES FILTERS, INTEGRAL UTILITY CABINET, KITCHEN EXHAUST SUPPRESSION SYSTEM, DUCT COLLAR TEMPERATURE SENSOR, PREWIRE PACKAGE, SPARE FIRE SYSTEM ERY CONTACT, AND 4-POLE 25A CONTACTOR

ROOFTOP UNIT SCHEDULE

TAG	DESCRIPTION	NOMINAL CAPACITY [TONS]	EER	AIRFLOW			NET COOLING CAPACITY			HEATING CAPACITY			# OF COMPRESSORS	# OF CIRCUITS	REFRIG. TYPE	REFRIG. CHARGE	APPROX WEIGHT [lbs]	ELECTRICAL			FURNISHED BY	INSTALLED BY	BASIS FOR DESIGN		REMARKS		
				TOTAL [CFM]	OA [CFM]	ESP [IN. W.C.]	TOTAL [MBH]	SENSIBLE [MBH]	EAT [DEG. F]	COND. EAT [DEG. F]	INPUT [MBH]	OUTPUT [MBH]						EAT [DEG. F]	MOCQ	FLA			V/P/H	MANUFACTURER		MODEL	
RTU-1	KITCHEN ROOFTOP UNIT	15	10.8	5250	500	0.6	171	88	75	68	97	180	146	64	2	1	R-410A	19.5	1850	80A	71.0 A	208/3/60	HES	GC	CARRIER	48FC_N36	FURNISHED WITH DEHUMIDIFICATION, HINGED ACCESS PANELS, STANDARD ECONOMIZER W/ DUAL ENTHALPY CONTROLS, BAROMETRIC RELIEF, RET. SMOKE DETECTOR W/ REMOTE KEYPAD ANNUNCIATOR/RESET, MERV-8 FILTERS, CURB, HAIL GUARD, DISCONNECT, & UNIT-MOUNTED NON-POWERED CONVENIENCE RECEPTACLE
RTU-2	DINING ROOFTOP UNIT	15	10.8	5250	1000	0.6	175	89	76	69	97	240	195	62	2	1	R-410A	19.5	1850	80A	71.0 A	208/3/60	HES	GC	CARRIER	48FC_N46	FURNISHED WITH DEHUMIDIFICATION, HINGED ACCESS PANELS, STANDARD ECONOMIZER W/ DUAL ENTHALPY CONTROLS, BAROMETRIC RELIEF, RET. SMOKE DETECTOR W/ REMOTE KEYPAD ANNUNCIATOR/RESET, MERV-8 FILTERS, CURB, HAIL GUARD, DISCONNECT, & UNIT-MOUNTED NON-POWERED CONVENIENCE RECEPTACLE

Consultant:

NATIONAL
 ENGINEERING
 4635 Truman Blvd. Suite 250
 Hilliard, Ohio 43086
 Phone: (614) 751-9610
 Fax: (614) 552-5240
 Contact: DENNIS ALT
 (614) 595-0599
 DALT@nationalengineering.com

FOR CONSTRUCTION

Copyright 2025
 THIS DRAWING IS AN INSTRUMENT OF SERVICE
 AND AS SUCH REMAINS THE PROPERTY OF
 CHIPOTLE MEXICAN GRILL, INC. PERMISSION FOR
 USE OF THIS DOCUMENT IS LIMITED AND CAN BE
 EXTENDED ONLY BY WRITTEN AGREEMENT WITH
 CHIPOTLE MEXICAN GRILL, INC.



CHIPOTLE MEXICAN GRILL, INC.
 4000 W. 150th
 Columbus, OH 43124-2966
 TELEPHONE: 614.918.9800
 INTERNET: WWW.CHIPOTLE.COM

STORE NO.: 5498
 TAMPA STADIUM / FL
 2708 W DR. MARTIN LUTHER KING JR.
 BLVD.
 TAMPA, FL 33607

AIR BALANCE SCHEDULE

Tag	Supply Flow [CFM]	Return Flow [CFM]	Exhaust Flow [CFM]	Subtotal [CFM]
EF-1	0	0	2550	-2550
EF-2	0	0	150	-150
MAU-1	1300	0	0	1300
RTU-1	5250	4750	0	500
RTU-2	5250	4250	0	1000
Net Pressurization [CFM]				100

CONTROL FUNCTIONS

- THE MAIN COOKING EXHAUST FAN AND MAKEUP AIR UNIT SHALL BE INTERLOCKED TO OPERATE TOGETHER. THIS CONTROL CIRCUIT IS ACTIVATED BY A SWITCH AND INCLUDES A FIRE PROTECTION OVERRIDE.
- THE TEMPERATURE IN EACH ZONE IS CONTROLLED BY SPACE TEMPERATURE SENSORS CONNECTED TO THE THERMOSTATS LOCATED IN THE OFFICE. ALL ZONES SHALL OPERATE WITH CONTINUOUS FAN OPERATION DURING OCCUPIED TIMES AND INTERMITTENTLY AS NEEDED TO MAINTAIN SET POINTS DURING UNOCCUPIED TIMES. OUTSIDE AIR DAMPERS SHALL BE OPEN CONTINUOUSLY WHEN EITHER IN OCCUPIED MODE OR WHEN THE HOOD SYSTEM IS ON AND SHALL BE CLOSED DURING UNOCCUPIED PERIODS.
- THE THERMOSTATS SHALL DETERMINE OCCUPIED/UNOCCUPIED STATUS BASED ON THE SCHEDULE IN THE ENERGY MANAGEMENT SYSTEM.

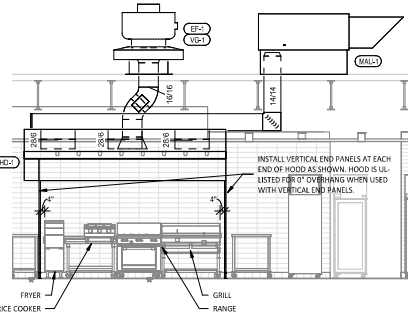
Issue Record:
 11/09/2024 LL REVIEW
 11/07/2024 ISSUE FOR PERMIT
 03/06/2025 ISSUE FOR PERMIT

Drawn: _____
 Checkd: _____
 Mkt: _____
 DAA

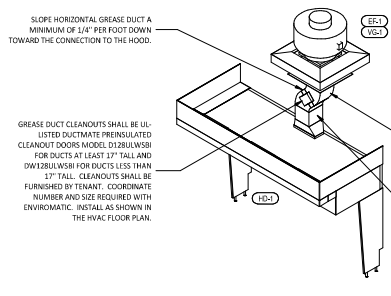
Project No:
 2401185

HVAC SCHEDULES

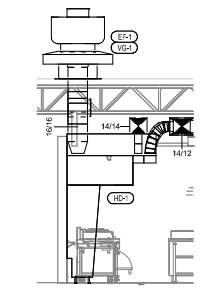
M600



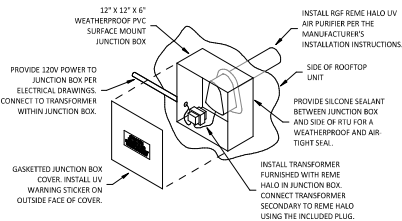
HOOD ELEVATION
1/4" = 1'-0"



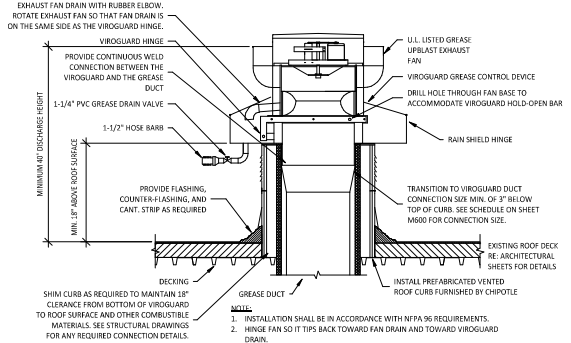
HOOD EXHAUST ISOMETRIC
N.T.S.



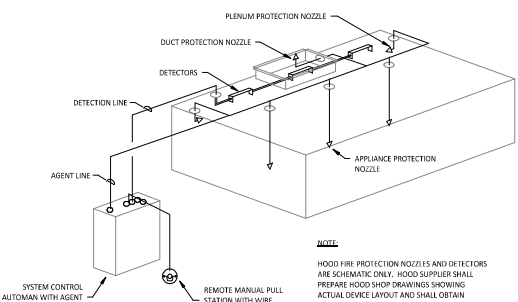
DUCT SECTION AT HOOD
1/4" = 1'-0"



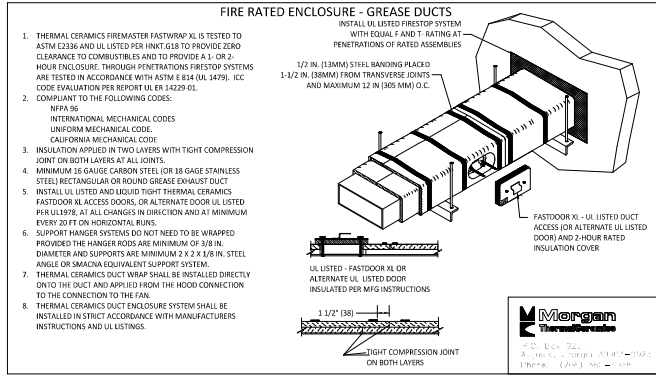
UV AIR PURIFIER INSTALLATION
N.T.S.



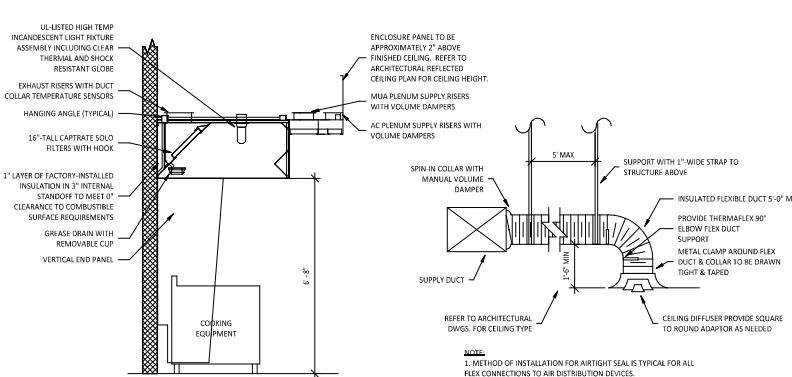
GREASE EXHAUST FAN
N.T.S.



FIRE SUPPRESSION SYSTEM SCHEMATIC
N.T.S.



FIREMASTER DUCT WRAP - UL HNK1-G18
N.T.S.



HOOD SECTION VIEW
N.T.S.

DIFFUSER CONNECTION
N.T.S.

Consultant:
NATIONAL
4635 Trueman Blvd. Suite 250
Hilliard, Ohio 43068
Phone: (614) 751-9610
Fax: (614) 552-5240
Contact: DENNIS ALT
(614) 595-0599
DALT@nationalengineering.com

FOR CONSTRUCTION

COPYRIGHT 2025
THIS DRAWING IS AN INSTRUMENT OF SERVICE AND AS SUCH REMAINS THE PROPERTY OF CHIPOTLE MEXICAN GRILL, INC. PERMISSION FOR USE OF THIS DOCUMENT IS LIMITED AND CAN BE EXTENDED BY WRITTEN AGREEMENT WITH CHIPOTLE MEXICAN GRILL, INC.



STORE NO.: 5498
TAMPA STADIUM / FL
2708 W DR. MARTIN LUTHER KING JR.
BLVD.
TAMPA, FL 33607

Issue Record	11/09/2024	UL REVIEW
	11/07/2024	ISSUE FOR PERMIT
	03/06/2025	ISSUE FOR PERMIT

Drawn:	Checked:
MCT	DAW
Project No:	2401185

CONTRACTS

HVAC DETAILS

M700

SECTION 15065 - COMMON PIPING REQUIREMENTS

- PART 1 - GENERAL**
SECTION REQUIREMENTS
 1. Comply with the requirements of the Building Code and the local authority having jurisdiction.
- PART 2 - PRODUCTS**
2.1 SUPPLYING DEVICES
 A. Hanger and Pipe Attachments: Factory fabricated with galvanized coatings; nonmetallic coated for hangers in direct contact with copper tubing.
 B. Building Attachments: Inward-actuated type, drive pin attachments with pullout and shear capacities appropriate for supported loads and building materials; UL listing and FM approval for fire protection systems.
 C. Mechanical Anchor Fasteners: Inset-type attachments with pullout and shear capacities appropriate for supported loads and building materials; UL listing and FM approval for fire protection systems.
- PART 3 - EXECUTION**
3.1 INSTALLATION
 A. Initial piping free of sags and bends.
 B. Install fittings for changes in direction and branch connections.
 C. Install sleeves for pipes passing through concrete and masonry walls, gypsum board partitions, and concrete floor and roof slabs.
 D. Exterior Wall, Pipe Penetrations: Mechanical sleeve seals installed in steel or cast iron pipes for wall sleeves.
 E. Fire Barrier Penetrations: Seal pipe penetrations with through-penetration firestop systems.
 F. Install unions adjacent to each valve and at final connection to each piece of equipment.
 G. Install dielectric unions and flanges to connect piping materials of dissimilar metals in gas piping.
 H. Install dielectric coupling and rigid fittings to connect piping materials of dissimilar metals in water piping.
 I. Provide full ring enclosures at plumbing penetrations through walls or ceilings. Tightly seal enclosures to the adjacent surface.
- 3.2 HANGERS AND SUPPORTS**
 A. Install building attachments within concrete or structural steel. Install additional attachments at concentrated loads, including valves, flanges, guides, strainers, expansion anchors, and at changes in direction of piping.
 B. Install powder actuated drive pin fasteners in concrete after it is cured. Do not use in lightweight concrete or in slabs less than 4 inches thick.
 C. Install mechanical anchor fasteners in concrete after concrete is cured. Do not use in lightweight concrete or in slabs less than 4 inches thick.
 D. Support fire protection system piping independent of other piping.
 E. Load Distribution: Install hangers and supports so piping live and dead loading and stresses from movement will not be transmitted to connected equipment.

END OF SECTION 15065

SECTION 15080 - MECHANICAL INSULATION

- PART 1 - GENERAL**
SECTION REQUIREMENTS
 1.1 SECTION INSULATION
 A. Submittals: None.
 B. Quality Assurance: Labeled with maximum flame-spread rating of 25 and maximum smoke developed rating of 50 according to ASTM E 84.
- PART 2 - PRODUCTS**
2.1 PIPE INSULATION
 A. Preformed Glass Fiber Pipe Insulation: ASTM C 547, Class 1, with factory applied, all purpose, vapor retarder jacket.
 B. Polyethylene Pipe Insulation: Uniaxial polyethylene, preformed pipe insulation. Comply with ASTM C 536, Type I, except for density.
- PART 3 - EXECUTION**
3.1 INSTALLATION
 A. Install vapor barriers on insulated pipes with surface operating temperatures below 60 deg.F.
 B. Insulate fittings, valves, and specialties.
 C. Seal vapor barrier penetrations for hangers, supports, anchors, and other projections.
 D. Coat gas fiber pipe insulation ends with vapor barrier coating.
 E. Roof Penetrations: Apply insulation on interior applications to a point even with the top of the roof flashing.
 F. Exterior Wall Penetrations: For penetrations of below grade exterior walls, terminate insulation flush with mechanical sleeve seal.
 G. Interior Walls and Partitions Penetrations: Apply insulation continuously through walls and partitions, except fire rated walls and partitions.
 H. Fire Rated Walls and Partitions Penetrations: Terminate insulation at penetrations through fire rated walls and partitions. Seal around penetration with through penetration firestop systems.
 I. Floor Penetrations: Terminate insulation at the underside of the floor assembly and at the floor support at top of floor. Seal around penetration with through penetration firestop systems.
 J. Glass Fiber Insulation Installation: Bond insulation to pipe with adhesive. Seal seams and joints with vapor barrier compound.
 K. Interior Piping System Applications: Insulate the following piping systems:
 1. Domestic cold, hot, and recirculation water pipes.
 2. Exposed sanitary drains and water supply pipes for public hand sinks.
 3. Refrigerant piping.
 L. Do not apply insulation to the following systems, materials, and equipment:
 1. Flexible connectors.
 2. Fire protection piping systems.
 3. Sanitary drainage and vent piping.
 4. Chrome plated pipes and fittings, except for plumbing fixtures for the disabled.
 5. Piping specialties, including air chambers, unions, strainers, check valves, and flow regulators.
 M. Pipe Insulation Thickness Application Schedule: Insulate piping with the following materials and thicknesses:
 1. Domestic Hot and Recirculation water pipes: 1-inch preformed glass fiber pipe insulation.
 2. Domestic Cold Water: 1/2-inch preformed glass fiber pipe insulation.
 3. "T" and Future Supplies for public hand sinks: R50 compliant pre-formed insulation.

END OF SECTION 15080

SECTION 15110 - VALVES

- PART 1 - GENERAL (Not Applicable)**
- PART 2 - PRODUCTS**
2.1 GENERAL DUTY VALVES
 A. End Connections: Threads shall comply with ANSI B1.20.1. Flanges shall comply with ANSI B16.1 for cast iron valves and ANSI B16.24 for bronze valves. Solder joint connections shall comply with ANSI B36.18.
 B. Ball Valves: Rated for 150 psig saturated steam pressure. 400 and WOG pressure; 2 piece construction; with bronze body, standard (or regular) port, chrome plated brass ball, replaceable "Teflon" or "TFE" seats and seals, blowout proof stem, and vinyl covered steel handle.
 C. Plug Valves: Rated at 150 psig WOG, bronze body, with straightaway pattern, square head, and threaded ends.
 D. Swing Check Valves: Class 125, cast bronze body and cap, with horizontal swing, Y-pattern, and bronze disc.
 E. Valves for Copper Tube: Solder ends, except provide threaded ends for heating hot water and low pressure steam service.
 F. Valves for Steel Pipe: Threaded ends.
- PART 3 - EXECUTION**
3.1 INSTALLATION
 A. Use gate and ball valves for shut-off duty and ball for throttling duty.
 B. Locate valves for easy access and provide proper support where necessary.
 C. Install accessible valves for each fixture and item of equipment.
 D. Install valves in horizontal piping with stem at or above center of pipe.
 E. Install valves in a position to allow full stem movement.
 F. Install check valves for proper direction of flow in horizontal position with hinge pin level.

END OF SECTION 15110

SECTION 15140 - DOMESTIC WATER PIPING

- PART 1 - GENERAL**
SECTION REQUIREMENTS
 A. Performance Requirements: Unless otherwise indicated minimum pressure requirements for water piping are as follows:
 1. Service Entrance Piping: 100 psig.
 2. Domestic Water Piping: 80 psig.
 B. Comply with NSF 14 "Plastic Piping Components and Materials".
 C. Comply with NSF 61 "Drinking Water System Components - Health Effects."
- PART 2 - PRODUCTS**
2.1 PIPS AND TUBES (See Material Schedule on sheet P100 for where these materials are to be used)
 A. Hard Copper Tube: ASTM B 88, Types L and M, water tube, drawn temper.
2.2 FITTINGS
 D. Wrought Copper, Solder Joint Pressure Fittings: ASME B 16.32.
 E. Cast Copper Alloy, Solder Joint Pressure Fittings: ASME B 16.18.
 C. Bronze Fittings: ASME B 16.24, Classes 150 and 300.
 D. Copper Unions: ASME B 16.38, cast copper alloy body, hexagonal stock, with ball and socket joint, metal to metal seating surfaces, and solder joint, threaded or solder joint and threaded ends. Threads complying with ASME B 1.20.1.
 E. Copper and Copper Alloy Press Connect Pressure Fittings/Copper Press Fittings: ASME B16.51
- 2.3 JOINING MATERIALS**
 A. Solder: Fillet Metal: ASTM B 32, lead free.
 B. Braze/Fillet Metal: AWS-A5.8, alloy to suit system requirements.
 C. Solvent Cements: As recommended by manufacturers.
 D. Plastic Pipe Seal: ASTM F 477, elastomeric gasket.
- PART 3 - EXECUTION**
3.1 VALVE APPLICATIONS
 A. Install gate valves close to main on each branch and riser serving two or more plumbing fixtures or equipment connections and where indicated.
 B. Install gate or ball valves on inlet to each plumbing equipment room, on each supply to each plumbing fixture not having traps on supplies, and elsewhere as indicated.
 C. Install gate valves on basis of each riser, at low points of horizontal runs, and where required to drain water distribution piping system.
 D. Install swing check valve in discharge side of each pump and elsewhere as indicated.
 E. Install ball valves in each hot water circulating loop and discharge side of each pump.
3.2 PIPING INSTALLATIONS
 A. Install hangers and supports at intervals indicated in the applicable plumbing code and as recommended by pipe manufacturers.
 B. Support vertical piping at each floor.
3.3 INSPECTING AND CLEANING
 A. Inspect and test piping systems following procedures of authorities having jurisdiction.
 B. Clean and disinfect water distribution piping following procedures of authorities having jurisdiction.

END OF SECTION 15140

SECTION 15150 - SANITARY WASTE AND VENT PIPING

- PART 1 - GENERAL**
SECTION REQUIREMENTS
 A. Minimum Pressure Requirement for Soil, Waste and Vent: 10 feet head.
 B. Comply with NSF 14 "Plastic Piping Components and Related Materials".
- PART 2 - PRODUCTS**
2.1 PIPS AND TUBES
 A. PVC Plastic, DWV Pipe: ASTM D 2665, Schedule 40, plain ends.
 B. PVC Plastic, DWV Pipe Fittings: ASTM D 2665, made to ASTM B 3111; socket type; drain, waste, and vent pipe fittings.
- 2.2 FITTINGS**
 A. PVC Plastic, DWV Pipe Fittings: ASTM D 2665, made to ASTM B 3111; socket type; drain, waste, and vent pipe fittings.
- PART 3 - EXECUTION**
3.1 PIPING INSTALLATION
 A. Install around and extension to grade at connection of building sanitary drain and building sanitary vent.
 B. Locate drainage piping runs as close as possible to bottom of floor slab supporting fixtures or drains.
3.2 INSPECTION
 A. Inspect and test piping systems following procedures of authorities having jurisdiction.

END OF SECTION 15150

SECTION 15198 - NATURAL GAS PIPING

- PART 1 - GENERAL**
SECTION REQUIREMENTS
 A. Quality Assurance: Comply with NFPA 54 and the Plumbing Code.
- PART 2 - PRODUCTS**
2.1 PIPE, TUBES AND SPECIALTIES
 A. Steel Pipe: ASTM A 53, Type S (Seamless), Grade B, Schedule 40, plain ends.
 B. Fittings:
 a. Ductile Iron Threaded Fittings: ASTM B16.3, Class 150.
 b. Cold Press Mechanical Joint Fitting System: Vega MegaPlus
 C. Manual Valves: Comply with standards listed or, if appropriate, to ANSI Z21.15.
 D. Gas Stops: ADA certified, brass-body, plug type with bronze plug, for 1/2-inch or less natural gas. Include AGA stamp, flat or square head or lever handle, and threaded ends complying with ASME B1.20.1.
 E. Gas Valves: 150 psig WOG, cast iron or bronze body, bronze plug, straightaway pattern, square head, tapered plug type.
 F. Gas Pressure Regulators: ANSI Z21.18, single stage, steel jacketed, corrosion resistant pressure regulators. Include atmospheric vent, elevation compensation. Regulator pressure ratings, inlet and outlet pressures, and flow volume in cubic feet per hour of natural gas at specific gravity as indicated.
 G. Line Gas Pressure Regulators: Inlet pressure rating not less than system pressure.
 H. Flexible Connections: ANSI Z21.24, copper alloy.
 I. Strainers: Bronze body, Y-pattern, full size of connecting piping. Include stainless-steel screens with 1/64 inch perforations and a pressure rating of 125-psig minimum, WOG working pressure.
- PART 3 - EXECUTION**
3.1 INSTALLATION
 A. Close equipment shut-off valves before turning off gas to premises or section of piping. Perform leakage test as specified to determine that all equipment is turned off in affected piping section.
 B. Install shut-off valve, downstream from gas meter, outside building at gas service entrance.
 C. Install gas stops for shut-off to appliances with NSF 71 or smaller low pressure gas supply.
 D. Drips and Sediment Traps: Install drips at points where condensate may collect. Include outlets of gas meters.
 E. Locate where readily accessible to permit closing and emptying. Do not install where condensate would be subject to freezing.
 F. Install gas piping at uniform slope of 0.1 percent upward toward risers.
 F. Connect branch piping from top of 1 side of horizontal piping.
 G. Install strainers on supply side of each control valve, gas pressure regulator, solenoid valve, and elsewhere as indicated.
 H. Install valves in accessible locations, protected from damage.
 I. Install gas valve upstream from each gas pressure regulator. Where two gas pressure regulators are installed in series, valve is not required at second regulator.
 J. Connect gas piping to equipment and appliances with shut-off valves and unions. Install gas valve upstream from and within 36 inches of each appliance using gas. Install union or flanged connection downstream from valve.
 K. Inspect, test, and purge piping according to NFPA 54, Part 4, "Gas Piping Inspection, Testing, and Purging," and requirements of authorities having jurisdiction.

END OF SECTION 15198

SECTION 15410 - PLUMBING FIXTURES

- PART 1 - GENERAL**
SECTION REQUIREMENTS
 Submittals: None.
 A. Comply with requirements of Public Law 102-486, "Energy Policy Act," regarding water flow rate and water consumption of plumbing fixtures.
 B. Comply with applicable standards below:
 1. Enameled, Cast Iron Fixtures: ASME A112.19.1M.
 2. National Sanitation Foundation Construction: NSF2.
 3. Porcelain Enamelled Fixtures: ASME A112.19.4M.
 4. Slip Resistant Bathing Surfaces: ASTM F 462.
 5. Stainless Steel Fixtures: ASME A112.19.3M.
 6. Vitreous China Fixtures: ASME A112.21M.
- PART 2 - PRODUCTS**
 2.1 Refer to the fixture schedule on drawing P100
- PART 3 - EXECUTION**
3.1 INSTALLATION
 A. Install fixtures with flanges and gasket seals.
 B. Install flushometer valves for accessible water closets and urinals with handle mounted on wide side of compartment. Install other actuators in locations that are easy for the disabled to reach.
 C. Fasten wall hanging plumbing fixtures securely to supports attached to building substrate when supports are specified, and to building wall construction where no support is indicated.
 D. Fasten floor mounted fixtures to substrate. With fixtures having holes for securing fixture to wall construction, fasten to reinforcement built into walls.
 E. Fasten wall mounted fittings to reinforcement built into walls.
 F. Fasten counter mounted plumbing fixtures to counter.
 G. Secure supplies to supports or substrate within pipe space behind fixture.
 H. Set mop basin in leveling bed of cement grout.
 I. Install individual supply inlets, supply stops, supply risers, and tubular brass traps with cleanouts at fixture.
 J. Install water supply stop valves in accessible locations.
 K. Install traps on fixture outlets. Omit traps on fixtures having integral traps. Omit traps on indirect wastes, unless otherwise indicated or required by the Authority having jurisdiction.
 L. Install full-ring enclosures at wall, floor, and ceiling penetrations in exposed, finished locations and within cabinets and millwork. Use deep pattern enclosures where required to conceal protruding pipe fittings.
 M. Install piping connections between plumbing fixtures and piping systems and plumbing equipment. Install insulation on supplies and drains of fixtures for the disabled.
 N. Ground equipment. Tighten electrical connectors and terminals according to UL 486A and UL 486B.

END OF SECTION 15410

SECTION 1555A - FLUES AND VENTS

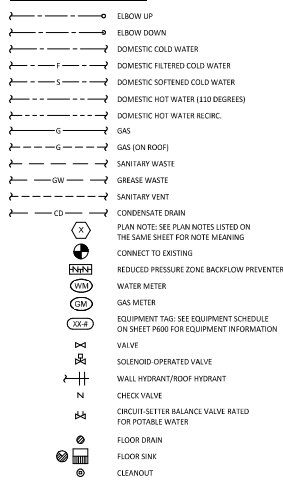
- PART 1 - GENERAL**
SECTION REQUIREMENTS
 A. Submittals: None.
PART 2 - PRODUCTS
2.1 GAS VENTS
 A. Vent/Air Intake for high efficiency domestic water heater. Follow manufacturer's recommendations for sizing and material.
 B. Accessories: Tees, elbows, increasers, draft hood connectors, metal cap with bird barrier, adjustable roof flashing, storm collar, support assembly, thumbs, firestopping supports, and fasteners; fabricated of similar materials and designs as vent pipe straight sections.
- PART 3 - EXECUTION**
3.1 INSTALLATION
 A. Install vents according to stipulated minimum clearances from combustibles.
 B. Seal between sections of positive pressure vents using only sealants recommended by manufacturer.
 C. Support vents at intervals to support the weight of the vent and all accessories, without exceeding loading of appliances.

END OF SECTION 1555A

PLUMBING GENERAL NOTES

- A. GENERAL NOTES APPLY TO PLUMBING SHEETS.
 B. PLUMBING WORK SHALL BE DONE IN ACCORDANCE WITH THE PLUMBING CODE, LOCAL HEALTH DEPARTMENT STANDARDS, AND THE AUTHORITY HAVING JURISDICTION. SEE ARCHITECTURAL SHEETS FOR THE PREVIOUS CODES.
 C. PIPING LAYOUTS ON DRAWINGS ARE SCHEMATIC. EXACT LOCATIONS ARE TO BE COORDINATED WITH THE EXISTING CONDITIONS AND THE WORK OF OTHER TRADES.
 D. CONCEAL PIPING UNLESS NOTED OTHERWISE. WATER SUPPLY, BRASS, AND BRASS DELIVER A REPORT AND COPY OF THE VIDEO TO THE TENANT'S CONSTRUCTION MANAGER PRIOR TO TURNOVER.
 E. PROVIDE GAS SHUT-OFF VALVES FOR ISOLATION OF FIXTURE GROUPS AS SHOWN ON DRAWINGS IN ADDITION TO STOP VALVES AT EACH FUTURE.
 F. PROVIDE STOP VALVES AT FUTURES.
 G. PROVIDE TEAR PIPERS FOR FLOOR DRAINS.
 H. WHERE THE WATER OR GAS SUPPLY LINE SIZE SHOWN IN THE PLUMBING DRAWINGS DIFFERS FROM THE FIXTURE OR EQUIPMENT CONNECTION SIZE, PROVIDE LINE SIZE PIPE TO WITHIN 6" OF THE FIXTURE OR EQUIPMENT BEFORE TRANSITIONING TO THE CONNECTION SIZE.
 I. FINISH IN EXTERIOR WALLS SHALL BE INSTALLED BETWEEN THE INSULATION AND THE INTERIOR WALL FINISHING MATERIAL.
 J. INSULATE THE HOT AND COLD WATER, CONDENSATE DRAINAGE, AND STORM PIPING PER THE PLUMBING GENERAL NOTES AND SECTION 15410.
 K. PROVIDE GAS SHUT-OFF VALVES AT EACH PIECE OF EQUIPMENT. PROVIDE ACCESSIBLE DIRT LEG AT THE BOTTOM OF VERTICAL SECTIONS OF GAS PIPE AND AT THE CONNECTION TO EACH PIECE OF EQUIPMENT.
 L. PLUMBING FITTINGS, ACCESSORIES, AND MATERIALS PROVIDED FOR DOMESTIC WATER SHALL BE LEAD FREE.
 M. PRIOR TO TURNOVER PERFORM A VIDEO INSPECTION OF THE SANITARY AND GREASE LINES FROM THE MAIN LINES WITHIN THE TENANT SPACE TO THE MAIN SEWER TO VERIFY THAT THE SANITARY WASTE SYSTEM IS CONNECTED, CLEAN, AND FREE OF SAGS, BELLS, BREAKS, AND DEBRIS. DELIVER A REPORT AND COPY OF THE VIDEO TO THE TENANT'S CONSTRUCTION MANAGER PRIOR TO TURNOVER.
 N. THE TERM "FURNISH" MEANS SUPPLY AND DELIVER TO THE PROJECT SITE, READY FOR UNLOADING, UNWINDING, ASSEMBLY, INSTALLATION, AND SIMILAR OPERATIONS. THE TERM "INSTALL" DESCRIBES THE OPERATIONS AT THE PROJECT SITE INCLUDING THE ACTUAL UNLOADING, UNPACKING, ASSEMBLY, ERECTING, PLACING, ANCHORING, APRYING, WORKING TO DIMENSION, FINISHING, CURING, PROTECTING, CLEANING, AND SIMILAR OPERATIONS. THE TERM "PROVIDE" MEANS TO FURNISH AND INSTALL, COMPLETE AND READY FOR THE INTENDED USE.
 O. PRIOR TO CONNECTION TO ANY EXISTING SEWER SYSTEM PERFORM A DIE TEST TO VERIFY THE TYPE OF SYSTEM AND THE DIRECTION OF FLOW. REPORT ANY DEVIATION FROM THE CONSTRUCTION DOCUMENTS TO THE TENANT'S CONSTRUCTION MANAGER.
 P. PROVIDE SANITARY AND GREASE WASTE PIPES AT A MINIMUM SLOPE OF 1/4" PER FOOT UNLESS NOTED OTHERWISE.
 Q. INSTALL SHUTOFF AND ISOLATION VALVES SHOWN TO BE ABOVE CEILING IN ACCESSIBLE LOCATIONS WITHIN 12" OF LAV-IN CEILING.
 R. PERFORM A FLOW TEST ON THE DOMESTIC WATER SERVICE AT POSSESSION, IF THE STATIC WATER PRESSURE IS OVER 80 PSI THEN COORDINATE WITH CHIPOTLE CONSTRUCTION MANAGER TO PROVIDE A PRESSURE REGULATOR (WATTS LFUSB 23 OR EQUAL). PROVIDE RESULTS OF THE FLOW TEST TO THE ENGINEER FOR CONFIRMATION OF ADEQUATE CAPACITY.

PLUMBING SYMBOLS



PLUMBING ABBREVIATIONS

AFB	ABOVE FINISH 1/2 FLOOR
ATC	ABOVE FINISHED GRADE
(E)	EXISTING
(EXT)	EXISTING
FCO	FLOOR CLEANOUT
FD	FLOOR DRAIN
FS	FLOOR SINK
GO	GRADE CLEANOUT
CO2AS	TENANT'S CO2 ALARM SUPPLIER
CG	GENERAL CONTRACTOR
HES	TENANT'S HVAC EQUIPMENT SUPPLIER
HS	TENANT'S HOOD SUPPLIER
KES	TENANT'S KITCHEN EQUIPMENT SUPPLIER
TAB	TENANT'S TEST AND BALANCE VENDOR
TCC	TENANT'S CABLING CONTRACTOR
TRC	TENANT'S TRUCK CLEANER
TEMS	TENANT'S ENERGY MANAGEMENT SYSTEM SUPPLIER
TL5	TENANT'S LIGHT/LAMP SUPPLIER
TMB	TENANT'S MENU BOARD SUPPLIER
TMS	TENANT'S MILLWORK SUPPLIER
IP	TENANT'S PHONE SUPPLIER
TFS	TENANT'S PANDBOARD SUPPLIER
TSS	TENANT'S SAILING SUPPLIER
TVS	TENANT'S SIGN VENDOR
USV	TENANT'S UV SANITIZER SUPPLIER
WCS	TENANT'S WALK IN COOLER SUPPLIER
WHS	TENANT'S WATER HEATER SUPPLIER

PLUMBING MATERIAL SCHEDULE

CATEGORY	APPLICATION	ALLOWABLE MATERIAL
WATER SUPPLY PIPE	ABOVE GRADE	TYPE L COPPER TUBE
	CONCEALED	SCH. 40 STEEL PIPE, MALLEABLE IRON THREADED FITTINGS
NATURAL GAS PIPE	CONCEALED	SCH. 40 STEEL PIPE, MALLEABLE IRON THREADED FITTINGS, PAINTED
	EXPOSED	PVC PLASTIC DWV PIPE AND FITTINGS
SANITARY WASTE & VENT PIPE	ABOVE GROUND, CONCEALED	PVC PLASTIC DWV PIPE AND FITTINGS
	ABOVE GROUND	PVC PLASTIC DWV PIPE AND FITTINGS
SANITARY WASTE & VENT PIPE	BELOW GROUND	BRASS WITH CHROMIUM FINISH
	BELOW GROUND	PVC PLASTIC DWV PIPE AND FITTINGS

Consultant:



NATIONAL
 4635 Tuermont Blvd, Suite 250
 Hilliard, Ohio 43026
 Phone: (614) 751-9610
 Fax: (614) 552-5240
 Contact: DENNIS ALT
 (614) 959-0599
 DALT@nationalengineering.com

FOR CONSTRUCTION

PLAN NOTE: SEE PLAN NOTES LISTED ON THE SAME SHEET FOR NOTE REVISIONS.
 CONNECT TO EXISTING
 REDUCED PRESSURE ZONE BACKFLOW PREVENTER
 WATER METER
 GAS METER
 EQUIPMENT TAG: SEE EQUIPMENT SCHEDULE ON SHEET P60 FOR EQUIPMENT INFORMATION

CHIPOTLE MEXICAN GRILL, INC.
 1100 N. LEXINGTON
 COLUMBUS, OH 43219-2966
 TELEPHONE: 614.218.1800
 INTERNET: WWW.CHIPOTLE.COM



STORE NO.: 5498
 TAMPA STADIUM/ FL
 2708 W DR. MARTIN LUTHER KING JR.
 BLVD.
 TAMPA, FL 33607

Issue Record	11/09/2024	11 REVIEW
	11/07/2024	ISSUE FOR PERMIT
	03/06/2025	ISSUE FOR PERMIT

Drawn:	Chad
DAW	DAW
Project No:	2401185
Grids:	

PLUMBING SPECIFICATIONS

P010

PLUMBING FIXTURE SUPPLY CONNECTIONS

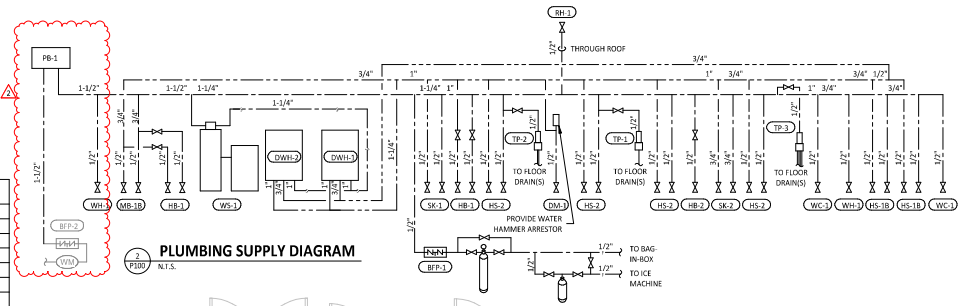
ROUGH-IN TYPE KEY

ANGLE 3/8"	BRASS CRAFT KTR19 OR EQUAL (BRASS/CHROME 1/4 TURN ANGLED BALL STOP WITH 3/8" COMPRESSION CONNECTION)
ANGLE 1/2"	BRASS CRAFT R35V C OR EQUAL (BRASS/CHROME MULTI-TURN ANGLED STOP WITH 1/2" COMPRESSION CONNECTION)
ANGLE 3/4"	UPFURN LOW 76382-NL W/ 3/4" SWIFT 3/8P ADAPTER OR EQUAL (BRASS ANGLE STOP W/ 3/4" FIP INLET AND OUTLET)
DIRECT	PROVIDE COPPER PIPE IN CONNECTIONS UNLESS SHOWN TO OTHERWISE
HOSE 1/2"	ARROWHEAD BRASS WMS5P OR EQUAL (BRASS/CHROME WASHING MACHINE VALVE W/ 3/4" MHT OUTLET)
MIP	PROVIDE PIPE WITH MIP THREAD STUBBED OUT OF WALL IN CONNECTION SIZE SHOWN AND LENGTH COMPATIBLE WITH FIXTURE AND WALL MATERIAL/FINISHES.

TAG	FIXTURE	CONNECTION SIZES		ROUGH-IN TYPE	FIXTURE UNITS (EACH)			FIXTURE UNITS (TOTAL)		
		CW	HW		CW	HW	TOTAL	CW	HW	TOTAL
BP-1	RPZ BACKFLOW PREVENTER	1/2"		DIRECT	1		1	1	1	1
DM-1	DISH SANITIZING MACHINE (PUMPED OUTLET)	1/2"	1/2"	HOSE 1/2"	0	1	1	1	0	1
ET-1	DISINFECTION TANK	3/4"		DIRECT	0	0	0	1	0	0
HB-1	HOSE BIBB	1/2"	1/2"	MIP	1.5	1.5	2	1	1.5	1.5
HB-2	HOSE BIBB	1/2"		MIP	1.5	0	1.5	1	1.5	0
HS-1B	RESTROOM HAND SINK FAUCET	1/2"	1/2"	ANGLE 3/8"	1.5	1.5	2	1	1.5	1.5
HS-2	KITCHEN HAND SINK	1/2"	3/4"	ANGLE 3/8"	1.5	1.5	2	1	1.5	1.5
IM-1	ICE MAKER - BHM	1/2"		HOSE 1/2"	1	0	1	1	1	0
IM-2	ICE MAKER - SODA	1/2"		HOSE 1/2"	1	0	1	1	1	0
IM-3	ICE MAKER - SODA	1/2"		HOSE 1/2"	1	0	1	1	1	0
MS-1B	MOP BASIN FAUCET	1/2"	1/2"	MIP	2.25	3	1	2.25	3	0
PF-1	POT FILLER	1/2"		MIP	1.5	0	1.5	1	1.5	0
RH-1	MILD CLIMATE ROOF HYDRANT	3/4"		DIRECT	1	0	1	1	1	0
SK-1	THREE COMPARTMENT SINK	1/2"	1/2"	ANGLE 1/2"	4	4	4	1	4	4
SK-2	PREP SINK	3/4"	3/4"	ANGLE 3/4"	3	3	4	1	3	4
WC-1	WATER CLOSET	1/2"		ANGLE 3/8"	5	0	5	1	5	0
WH-1	MILD CLIMATE WALL HYDRANT	3/4"		DIRECT	1	0	1	1	1	0
WS-1	WATER SOFTENER	1"		DIRECT	0	0	0	1	0	0
48										

PLUMBING SUPPLY PLAN NOTES

- CONNECT TO EXISTING 1-1/2" DOMESTIC WATER LINE FROM EXISTING 1" DOMESTIC WATER METER AND 1-1/2" BFP. FIELD VERIFY EXISTING EXTERIOR WATER SERVICE ENTRY LOCATION.
- PROVIDE 1/2" FILTERED WATER TO THE BAG-IN-BOX SODA CARBONATOR AT 10' AFF. SODA CARBONATOR SHALL HAVE AN INTEGRAL ASSE 1022-RATED CARBONATED BEVERAGE BACKFLOW PREVENTION DEVICE.
- PROVIDE WATER HEATER DWH-1 AND DWH-2 PER DETAIL 1/P700.
- PROVIDE WATER FILTERS MOUNTED TO WALL PER DETAIL 1/P700. PROVIDE 1/2" SUPPLY PIPES FROM FILTERS TO ICE MAKER AND SODA CARBONATOR AS SHOWN.
- PROVIDE 1/2" FILTERED WATER ROUGH-IN TO THE ICE MAKER AT 56" AFF. PROVIDE 6' LONG STAINLESS STEEL FLEXIBLE BRAIDED WASHING MACHINE WATER CONNECTOR WITH MINIMUM 0.43" ID (BRASSCRAFT SL12-72W-F OR EQUAL) FOR FINAL CONNECTION TO ICE MAKER.
- PROVIDE DOMESTIC WATER ROUGH-INS FOR THE MOP BASIN FAUCET AT 36" AFF. PROVIDE DOMESTIC WATER ROUGH-INS FOR THE CHEMICAL DISPENSER FAUCET (HB-1) AT 64" AFF DIRECTLY ABOVE THE MOP BASIN FAUCET. SEE ARCHITECTURAL ELEVATION FOR ADDITIONAL INFORMATION.
- CONNECT TO THE EXISTING GAS SERVICE WITH UPSTREAM METER. FIELD VERIFY LOCATION OF GAS SERVICE ENTRANCE.
- PROVIDE GAS CONNECTIONS TO THE COOKING EQUIPMENT PER DETAIL 1/P700.
- SUPPORT THE GAS PIPE ON THE ROOF PER DETAIL 5/P700. WOOD BLOCKING IS NOT AN ACCEPTABLE METHOD OF SUPPORTING THE GAS PIPE.
- PROVIDE ACCESSIBLE LINE-SIZED GAS VALVE, DIRT LEG, AND UNION AT GAS CONNECTION TO THE EQUIPMENT. REFER TO ARCHITECTURAL DRAWINGS FOR PAINTING OF INTERIOR AND EXTERIOR EXPOSED GAS PIPE.
- PROVIDE DOMESTIC WATER ROUGH-INS FOR THE CHEMICAL DISPENSER FAUCET (HB-1) AT 52" AFF. SEE ARCHITECTURAL ELEVATION FOR ADDITIONAL INFORMATION.
- PROVIDE DOMESTIC WATER ROUGH-IN FOR THE VICTORY WASH DISPENSER FAUCET (HB-2) AT 52" AFF. SEE ARCHITECTURAL ELEVATION FOR ADDITIONAL INFORMATION.
- PROVIDE ROUGH-INS TO RESTROOM HAND SINKS AS SHOWN IN DETAIL 54/P700.
- PROVIDE KITCHEN EQUIPMENT GAS SHUTOFF 6" BELOW THE CEILING PER DETAIL 4/P700.
- CONNECT CHEMICAL DISPENSER TO HB-1. CHEMICAL DISPENSER HAS AN INTEGRAL AIR GAP AS SHOWN IN DETAIL 10/P700.
- PROVIDE ASSE 1016/0700 POINT-OF-USE THERMOSTATIC MIXING VALVE, WATTS 1FUSG-B, ON WATER SUPPLY TO KITCHEN HAND SINKS. PROVIDE ANGLE STOP BELOW SINK, FASTEN MIXING VALVE TO WALL, AND MAKE FINAL CONNECTION FROM ANGLE STOP TO MIXING VALVE AND FROM MIXING VALVE TO FAUCET USING BRAIDED STAINLESS STEEL HOSE. ADJUST MIXING VALVE FOR A DISCHARGE TEMPERATURE OF APPROXIMATELY 110° F.
- PROVIDE ACCESSIBLE VALVE IN WATER SUPPLY TO FIXTURE AS SHOWN.
- PROVIDE GAS CONNECTION TO THE RICE COOKER PER DETAIL 6/P700.
- PROVIDE GAS ROUGH-IN TO FRYER BEHIND RICE COOKER TABLE SO THAT VALVES AND DIRT LEG ARE ACCESSIBLE ONCE FRYER IS SECURED INTO PLACE.
- PROVIDE AN ACCESSIBLE MAIN DOMESTIC WATER SHUTOFF VALVE ABOVE LAY IN CEILING AS SHOWN. VALVE SHALL BE 12" ABOVE THE TOP OF THE LAY IN CEILING. PERMANENTLY INSTALL THE "WATER SHUTOFF" SIGN TO THE CEILING GRID BELOW THE VALVE.
- INSTALL RGF IM5B ICE MAKER SANITIZER FURNISHED BY TUV PER CHIPOTLE'S INSTALLATION INSTRUCTIONS.
- PROVIDE 3/4" DOMESTIC HOT AND COLD WATER ROUGH-INS FOR THE PREP SINK (SK-2) FAUCET AT 24" AFF TO ALLOW FOR THE VICTORY WASH CHEMICAL DOCK TO BE INSTALLED DIRECTLY BELOW THE PREP SINK BASIN. MAKE FINAL CONNECTION TO PREP SINK FAUCET USING 3/4" BRAIDED STAINLESS STEEL WATER HEATER CONNECTOR HOSE.
- PROVIDE 1/2" HOT WATER TO THE DISH MACHINE AT 66" AFF ABOVE LEFT SIDE OF DISH MACHINE. MAKE FINAL CONNECTION USING HOSE FURNISHED WITH DISH MACHINE. PROVIDE WATER HAMMER ARRESTOR ON HOT WATER LINE.
- PROVIDE ROOF HYDRANT RH-1 WITH BOTTOM OF NOZZLE INSTALLED 24" ABOVE THE BOTTOM OF ROOF DECK. PROVIDE ACCESSIBLE ISOLATION VALVE IN WATER SUPPLY TO ROOF HYDRANT. SUPPORT ROOF HYDRANT PER THE MANUFACTURER'S INSTALLATION INSTRUCTIONS.
- PROVIDE FILTERED DOMESTIC WATER ROUGH-INS FOR THE SPEED FILL POT FILLER FAUCET (PF-1) AT 40" AFF. SEE ARCHITECTURAL ELEVATION FOR DETAIL.
- PROVIDE 1/2" FILTERED WATER ROUGH-IN TO THE ICE MAKER AT 24" AFF. PROVIDE 6' LONG STAINLESS STEEL FLEXIBLE BRAIDED WASHING MACHINE WATER CONNECTOR WITH MINIMUM 0.43" ID (BRASSCRAFT SL12-72W-F OR EQUAL) FOR FINAL CONNECTION TO ICE MAKER.
- INSTALL RGF IM5B ICE MAKER SANITIZER FURNISHED BY TUV PER CHIPOTLE'S INSTALLATION INSTRUCTIONS. LOCATE IM5B BELOW UTENSIL COUNTER IN A LOCATION THAT DOES NOT INTERFERE WITH THE ROLLING RACK BELOW THE UTENSIL COUNTER.
- PROVIDE ACCESSIBLE TRAP PRIMER ABOVE LAY IN CEILING AS SHOWN. INSTALL PER MANUFACTURER'S INSTALLATION INSTRUCTIONS WITH A SERVICE VALVE AT THE TRAP PRIMER INLET. PROVIDE 1/2" DISTRIBUTION PIPES TO FLOOR DRAIN TRAP PRIMER CONNECTIONS AS SHOWN. HORIZONTAL DISTRIBUTION PIPING SHALL HAVE CONTINUOUS SLOPE TO THE FLOOR DRAINS.
- PROVIDE WATER SOFTENER AS SHOWN IN DETAIL 16/P700.
- PROVIDE WATER PRESSURE BOOSTER ABOVE CEILING PER MANUFACTURER'S INSTALLATION INSTRUCTIONS.



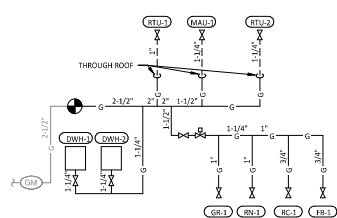
PLUMBING SUPPLY DIAGRAM

1/4\"/>

CONNECTED GAS LOAD

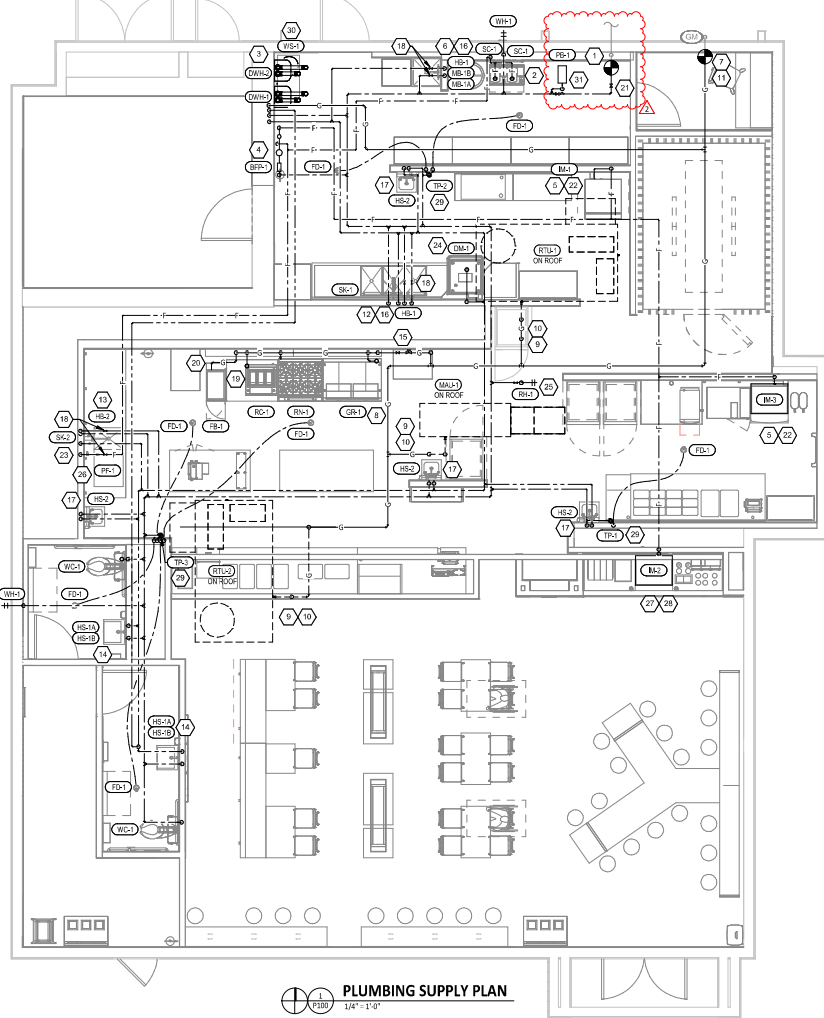
FIXTURE	TAG	MBH	EQUIVALENT LENGTH FROM METER (FT)
WATER HEATER	DWH-1	159	75
WATER HEATER	DWH-2	159	80
GAS FRYER	FB-1	90	95
GRIDDLE	GR-1	107	85
MAKEUP AIR UNIT	MAU-1	225	80
RICE COOKER	RC-1	33	95
RANGE	RN-1	192	95
KITCHEN ROOFTOP UNIT	RTU-1	180	65
DINING ROOFTOP UNIT	RTU-2	240	100
Gas Load Total		1465	MAX: 233

- NOTES:
 1. PRESSURE REQUIRED AFTER METER: 7" W.C.
 2. DISTANCES ARE APPROXIMATE



GAS DISTRIBUTION DIAGRAM

1/4\"/>



PLUMBING SUPPLY PLAN

1/4\"/>

Consultant:
NATIONAL
 4635 Truman Blvd, Suite 250
 Hilliard, Ohio 43026
 Phone: (614) 751-9610
 Fax: (614) 552-5240
 Contact: DENNIS ALT
 (614) 595-0799
 DALT@nationalengineering.com

FOR CONSTRUCTION

COPYRIGHT 2025
 THIS DRAWING IS AN INSTRUMENT OF SERVICE
 AND AS SUCH REMAINS THE PROPERTY OF
 CHIPOTLE MEXICAN GRILL, INC. PERMISSION FOR
 USE OF THIS DOCUMENT IS LIMITED AND CAN BE
 EXTENDED ONLY BY WRITTEN AGREEMENT WITH
 CHIPOTLE MEXICAN GRILL, INC.



CHIPOTLE MEXICAN GRILL, INC.
 P.O. BOX 10204
 COLUMBUS, OH 43210-2046
 TELEPHONE: 614.751.9610
 INTERNET: WWW.CHIPOTLE.COM

STORE NO.: 5498
 TAMPA STADIUM / FL
 2708 W DR. MARTIN LUTHER KING JR.
 BLVD.
 TAMPA, FL 33607

Issue Record	DATE	ISSUE	REVIEW
11/09/2024	LL	REVIEW	
11/07/2024	ISSUE FOR PERMIT		
03/06/2025	ISSUE FOR PERMIT		

Drawn: DAA

Checked: DAA

Project No: 2401185

Grids:

PLUMBING PLAN
 WATER & GAS

P100

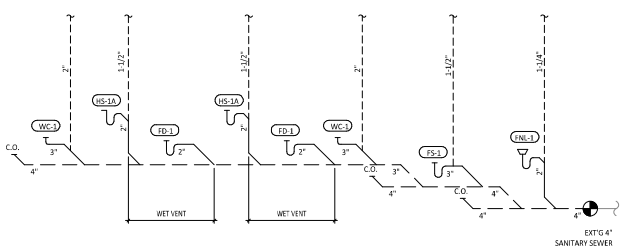
PLUMBING WASTE AND VENT PLAN NOTES

1. PROVIDE 3/4" CONDENSATE DRAIN FROM THE WALK-IN COOLER EVAPORATOR TO THE FLOOR SINK BELOW THE ICE MAKER AS SHOWN. SLOPE CONDENSATE DRAIN A MINIMUM OF 1" PER FOOT. HOLD EXPOSED CONDENSATE DRAIN IN WALK-IN COOLER AS HIGH AS POSSIBLE. CONCEAL DRAIN PIPING WITHIN FRAMED WALLS AS SHOWN. DISCHARGE THROUGH AN AIR GAP. MAKE FINAL CONNECTION TO EVAPORATOR INSIDE WALK-IN COOLER USING A UNION. CONDENSATE DRAIN SHOULD PENETRATE WALL BEHIND ICE MAKER AT 8" AFF AND BE SECURED TO FLOOR UNDER ICE MAKER.
2. PROVIDE DRAIN CONNECTIONS TO THE THREE COMPARTMENT SINK PER DETAIL 2/P700.
3. COORDINATE ROUTING OF SODA BUNDLES WITH COCA-COLA TECHNICIAN FROM BAG-IN-BOX AREA TO EACH SODA FOUNTAIN. OTHER THAN WITHIN THE WALLS DOWN TO THE DRYER BOX THE SODA BUNDLE SHALL BE ROUTED OVERHEAD WITHOUT CONDUIT. COORDINATE SUPPORT AND ROUTING OF THE SODA LINE BUNDLES WITH COCA-COLA TECHNICIAN DURING ROUGH IN AND PROVIDE NECESSARY SUPPORTS. SEE ARCHITECTURAL DRAWINGS FOR SODA BUNDLE TERMINATION LOCATION AND PROVIDE TERMINATION PER DETAIL 12/P700.
4. PROVIDE PVC DRAIN PIPES FROM THE ICE MACHINE TO THE FLOOR SINK PER THE MANUFACTURER'S INSTALLATION INSTRUCTIONS. PROVIDE A CODE-APPROVED AIR GAP AT THE DISCHARGE TO THE FLOOR SINK. SECURE ICE MAKER DRAIN PIPES TO THE BOTTOM OF THE ICE MAKER.
5. PROVIDE DRAIN LINES FROM THE FOOD PREP SINK TO THE FLOOR SINK. PROVIDE AN AIR GAP AT THE DISCHARGE TO THE FLOOR SINK.
6. PROVIDE A 3" VENT THROUGH THE ROOF PER DETAIL 3/P700.
7. CONNECT TO EXISTING 4" GREASE WASTE LINE LEADING TO EXISTING 1250 GALLON INTERCEPTOR.
8. CONNECT TO EXISTING 4" SANITARY SEWER.
9. PROVIDE 3/4" VALVED DRAIN FROM HOT FOOD TABLE TO THE FLOOR SINK. DRAIN THROUGH AN AIR GAP.
10. PROVIDE INSULATED COPPER DRAIN LINES FROM THE TEA TRAY DRAIN AND THE SODA MACHINE DRAIN TO THE FLOOR SINK. DRAIN THROUGH AN AIR GAP. HOLD TEA TRAY DRAIN AS HIGH AS POSSIBLE AND SECURE TO STRUCTURE BELOW THE UTENSIL COUNTER.
11. TRIM TRENCH DRAIN ENDS PER THE MANUFACTURER'S INSTALLATION INSTRUCTIONS PRIOR TO INSTALLATION SO THAT GRATE FITS WITHOUT GAPS. INSTALL TRENCH DRAIN WITH SLIGHT POSITIVE SLOPE TOWARD THE DRAIN CONNECTION TO AVOID STANDING WATER IN TRENCH DRAIN.
12. HOLD HORIZONTAL VENT PIPES ABOVE THE RESTROOM BELOW THE TOP OF THE PLYWOOD BOX ELEMENT. PAINT EXPOSED VERTICAL VENT PIPES TO MATCH THE ROOF DECK.
13. DO NOT PROVIDE WALL CLEANOUTS ON TILE OR PUBLICLY-VISIBLE WALLS. IF A WALL CLEANOUT IS REQUIRED ON THESE SURFACE COORDINATE THE EXACT LOCATION WITH CHIPOTLE'S CONSTRUCTION MANAGER.
14. PROVIDE INDIRECT WASTI AND CONDENSATE DRAINS FROM FIXTURES OTHER THAN KITCHEN SINKS CONCEALED IN THE WALL AS SHOWN IN DETAIL 9/P700.
15. PROVIDE DRAIN FROM WATER FILTER BFP TO FLOOR DRAIN CONCEALED IN THE WALL AS SHOWN IN DETAIL 9/P700.
16. PROVIDE TRENCH DRAIN AS SHOWN IN DETAIL 15/P700.
17. INSTALL DRAIN HOSE FURNISHED WITH DISH MACHINE FROM DISH MACHINE OUTLET TO FLOOR SINK. HOLD DRAIN HOSE TIGHT TO WALL AND SECURE TO 3-COMP SINK DRAIN TO MAINTAIN AN AIR GAP AT THE FLOOR SINK.
18. PROVIDE CONDENSATE TRAP ON RTU PER DETAIL 13/P700.
19. SEE DETAIL 18/P700 FOR DRAINS FROM TEA TRAY, ICE MAKER, AND SODA MACHINE TO FUNNEL DRAIN.

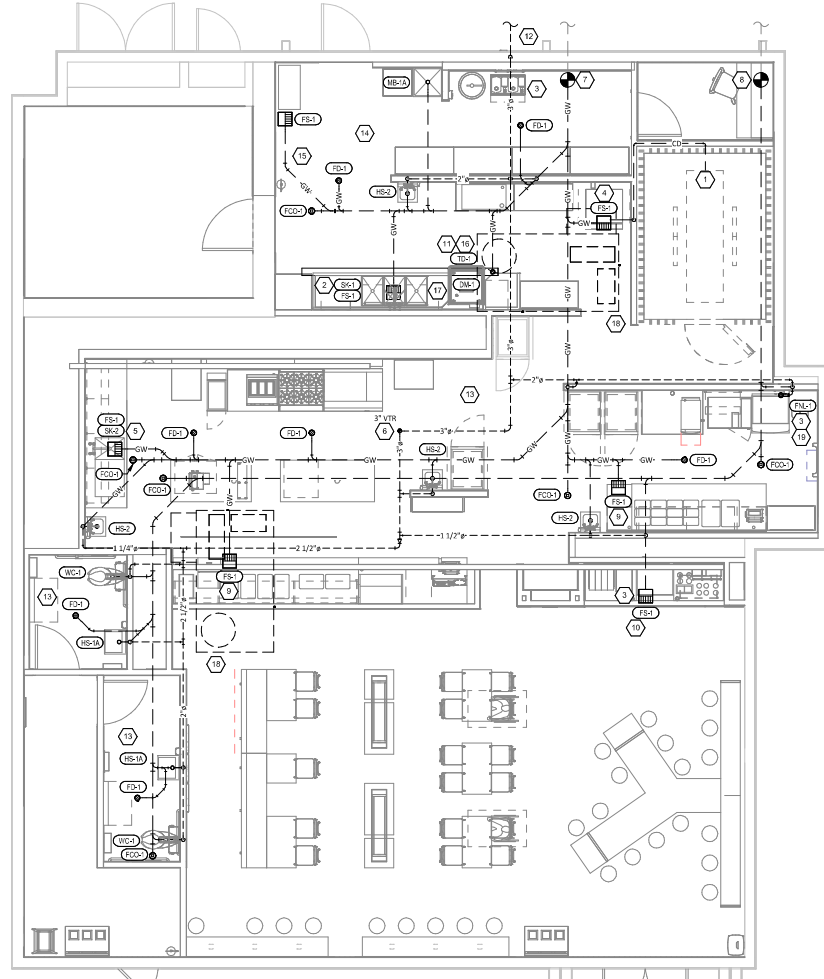
GREASE INTERCEPTOR SIZING CALCULATIONS

(S) S (GS) X (HR/12) X (LF) = REQUIRED CAPACITY
 S = NUMBER OF SEATS IN THE DINING AREA
 GS = GALLONS OF WASTEWATER PER SEAT (100 GALLONS FOR SINGLE SERVICE RESTAURANTS)
 HR = NUMBER OF HOURS ESTABLISHMENT IS OPEN
 LF = LOADING FACTOR (1.0 MAIN HIGHWAY)

(77 SEATS) X (100 GALLONS) X (12.25/12) X (1.0) = 786 GALLONS



SANITARY WASTE & VENT DIAGRAM



SANITARY WASTE & VENT PLAN

Consultant:
NATIONAL
 4635 Trueman Blvd. Suite 250
 Hilliard, Ohio 43026
 Phone: (614) 751-9610
 Fax: (614) 552-5240
 Contact: DENNIS ALT
 (614) 595-0599
 DALT@nationalengineering.com

FOR CONSTRUCTION

COPYRIGHT 2025
 THIS DRAWING IS AN INSTRUMENT OF SERVICE
 AND AS SUCH REMAINS THE PROPERTY OF
 NATIONAL ENGINEERING, INC. PERMISSION FOR
 USE OF THIS DOCUMENT IS LIMITED AND CAN BE
 EXTENDED ONLY BY WRITTEN AGREEMENT WITH
 CHIPOTLE MEXICAN GRILL, INC.



CHIPOTLE MEXICAN GRILL, INC.
 400 BOWLING GREEN
 COLUMBUS, OH 43216-2966
 TELEPHONE: 614.219.3900
 INTERNET: WWW.CHIPOTLE.COM

STORE NO.: 5498
 TAMPA STADIUM FL
 2708 W DR. MARTIN LUTHER KING JR.
 BLVD.
 TAMPA, FL 33607

Issue Record	11/09/2024	LL REVIEW
	11/07/2024	ISSUE FOR PERMIT
	03/06/2025	ISSUE FOR PERMIT

Revisions	01/17/2025	PERMIT COMMENTS
1		

Drawn	Checked
DAA	DAA

Project No:
 2401185

**PLUMBING PLAN
 WASTE & VENT**

P110

PLUMBING FIXTURE SCHEDULE

TAG	FIXTURE	FURNISHED BY	INSTALLED BY	MANUFACTURER	MODEL	DESCRIPTION	QUANTITY	CONNECTION SIZES			FIXTURE UNITS (EACH)				FIXTURE UNITS (TOTAL)			
								CW	HW	WASTE	CW	HW	TOTAL	SAN	CW	HW	TOTAL	SAN
BFP-1	RP2 BACKFLOW PREVENTER	GC	GC	CONBRACO	HAIF-203-72F	LEAD FREE REDUCED PRESSURE PRINCIPLE BACKFLOW PREVENTER WITH AUTOMATIC DIFFERENTIAL RELIEF VALVE	1	1/2"			1			1	0	1	0	
DM-1	DISH SANITIZING MACHINE (PUMPED OUTLET)	KES	GC	FURNISHED BY KES	--	CHEMICAL SANITIZING DISH MACHINE WITH INTEGRAL ELECTRIC BOOSTER HEATER AND PUMPED OUTLET	1	1/2"	3/4"		0	1	1	0	0	1	1	0
ET-1	EXPANSION TANK	GC	GC	AMTROL	ST-5	2-GALLON CAPACITY	1	3/4"			0	0	0	0	0	0	0	0
FCO-1	FLOOR CLEANOUT (4")	GC	GC	SIOUX CHIEF	852-4PNR	ON-GRADY ADJUSTABLE CLEANOUT WITH INTERNAL THREADED CLEANOUT PLUG AND ROUND NICKEL-BRONZE RING AND COVER (OR APPROVED EQUAL WITH INTERNAL THREADED CLEANOUT PLUG)	6		4"		0	0	0	0	0	0	0	
FD-1	FLOOR DRAIN	GC	GC	SIOUX CHIEF	842-2-PNR	ADJUSTABLE FLOOR DRAIN, ROUND POLISHED METAL RINGS AND STRAINER	7		2"		0	2	0	0	0	0	14	
FNL-1	FUNNEL DRAIN	GC	GC	JAY R. SMITH	3832T	FUNNEL DRAIN WITH CAST BRONZE BODY AND THREADED OUTLET	1		2"	0	2	0	0	0	0	2		
FS-1	FLOOR SINK	GC	GC	SIOUX CHIEF	861-3PU2	HEAVY DUTY PVC FLOOR SINK WITH ALUMINUM DOME BOTTOM STRAINER AND OPEN HALF PVC GRATE	7		3"	0	5	0	0	0	0	35		
GI-1	GREASE INTERCEPTOR	GC	GC	CUSTOM	--	1,250 GALLON PRECAST GREASE INTERCEPTOR	1		4"		0	0	0	0	0	0		
HB-1	HOSE BIBB	KES	GC	T&S	B-2345-01-XX	COMMERCIAL QUALITY HOT & COLD MIXING WALL HYDRANT. SUPPLY ARMS SHALL HAVE INTEGRAL SHUT-OFF STOP AND CHECK VALVE.	2	1/2"	1/2"	1.5	1.5	2	0	3	3	4	0	
HB-2	HOSE BIBB	KES	GC	T&S	B-0730	SILL FAUCET WITH 1/2" NPT FEMALE INLET AND 3/4" GARDEN HOSE THREADED OUTLET.	1	1/2"		1.5	0	1.5	0	1.5	0	1.5	0	
HS-1A	RESTROOM HAND SINK	GC	GC	AMERICAN STANDARD	9024.01EC	ADA-ACCESSIBLE, WALL-MOUNTED, PORCELAIN LAVATORY. PROVIDE ZURN Z1231 (Z1231-D FOR BACK-TO-BACK APPLICATIONS) CONCEALED ARM CARRIER IN WALL. APPROVED ALTERNATE: KOHLER K-2084	2	0"	0"	2"	0	0	0	1	0	0	2	
HS-1B	RESTROOM HAND SINK FAUCET	KES	GC	FURNISHED BY KES	--	PLUG-IN AUTOMATIC FAUCET WITH 0.5 GPM AERATOR AND THERMOSTATIC MIXING VALVE. ADJUST FAUCET CONTROLS FOR 10 SECOND SHUTOFF DELAY AND 30 SECOND TIME-OUT DELAY.	2	1/2"	1/2"	0"	1.5	1.5	2	0	3	3	4	0
HS-2	KITCHEN HAND SINK	KES	GC	FURNISHED BY KES	--	STAINLESS STEEL SINK WITH WALL MOUNTING BRACKET AND BACKSPASH MOUNTED FAUCET WITH SWIVEL GOOSENECK	4	1/2"	1/2"	2"	1.5	1.5	2	1	6	6	8	4
IM-1	ICE MAKER - BOH	KES	GC	SEE ARCH	--	BACK OF HOUSE ICE MAKER WITH BIN (STANDARD CAPACITY REMOTE AIR COOLED)	1	1/2"		1	0	1	0	1	0	1	0	
IM-2	ICE MAKER - SODA	KES	KES	SEE ARCH	--	SODA MACHINE-MOUNTED ICE MAKER (INTEGRAL AIR COOLED)	1	1/2"		1		1		1	0	1	0	
IM-3	ICE MAKER - SODA	KES	KES	SEE ARCH	--	SODA MACHINE-MOUNTED ICE MAKER (REMOTE AIR COOLED)	1	1/2"		1		1		1	0	1	0	
MB-1A	MOP BASIN	GC	GC	FIAT	MSB2424	PROVIDE 24"x24"x10" MOLDED-STONE MOP BASIN. INSTALL MOP BASIN IN A BED OF GROUT SO THERE ARE NO VOIDS BETWEEN THE MOP BASIN AND THE SLAB.	1	0"	0"	3"	0	0	0	3	0	0	3	
MB-1B	MOP BASIN FAUCET	KES	GC	FURNISHED BY KES	--	SERVICE SINK FAUCET WITH BUILT-IN STOPS, LEVER HANDLES, AND WALL BRACE.	1	1/2"	1/2"	0"	2.25	2.25	3	0	2.25	2.25	3	0
PB-1	PRESSURE BOOSTER PUMP	GC	GC	ITT-GOULDs	3AB22M1G2D2	2-HP AQUABOOST R CONTROLLER, WALL MOUNT KIT, MCC CAST IRON/STAINLESS STEEL PUMP, TRANSDUCER, VSP (2 GALL) TANK, PRESSURE GAUGE, RELIEF VALVE, AND DISCHARGE PIPE FEE	1	1 1/2"			0	0	0	0	0	0		
PF-1	POT FILLER	KES	GC	FURNISHED BY KES	--	WALL-MOUNTED POT FILLER W/ SELF-CLOSING FILLER VALVE AND 3/8" NPT FEMALE INLET	1	1/2"		1.5	0	1.5		1.5	0	1.5	0	
RH-1	MILD CLIMATE ROOF HYDRANT	GC	GC	WOODFORD	RHMC-MS	ROOF HYDRANT WITH ASSE 1052 DUAL CHECK BACKFLOW PREVENTER	1	3/4"		1	0	1		1	0	1	0	
SK-1	THREE COMPARTMENT SINK	KES	GC	FURNISHED BY KES	--	THREE-COMPARTMENT WARE-WASHING SINK FURNISHED WITH (1) PRE-RINSE UNIT WITH ADD-ON FAUCET	1	1/2"	1/2"	2"	4	4	4	5	4	4	4	5
SK-2	PREP SINK	KES	GC	FURNISHED BY KES	--	STAINLESS STEEL PREP TABLE WITH INTEGRAL PREP SINK. FURNISHED WITH "BIG FLO" FAUCET	1	3/4"	3/4"	2"	3	3	4	0	3	3	4	0
TD-1	TRENCH DRAIN	GC	GC	ZURN	Z886 8601 8602	6" X 180" HDPE TRENCH DRAIN (SLOPED FROM 3.50" TO 4.70") WITH (2) CLOSED END CAPS, (1) 4" NO-HUB BOTTOM OUTLET, AND CLASS-A HELL-PROOF POLYETHYLENE GRATES. SEE DETAIL 12/P100 FOR REDUCTION TO 2" DRAIN CONNECTION.	1		2"	0	0	0	2	0	0	0	2	
TP-1	TRAP PRIMER (ONE FLOOR DRAIN)	GC	GC	PRECISION PLUMBING PRODUCTS	P2-500	TRAP PRIMER WITH INTEGRAL VACUUM BREAKER AND NO DISTRIBUTION UNIT.	1	1/2"		0	0	0	0	0	0	0	0	
TP-2	TRAP PRIMER (TWO FLOOR DRAINS)	GC	GC	PRECISION PLUMBING PRODUCTS	P2-500 W/ DU-U	TRAP PRIMER WITH INTEGRAL VACUUM BREAKER AND DISTRIBUTION UNIT. CAP UNUSED DISTRIBUTION UNIT OUTLETS.	1	1/2"		0	0	0	0	0	0	0	0	
TP-3	TRAP PRIMER (THREE-FOUR FLOOR DRAINS)	GC	GC	PRECISION PLUMBING PRODUCTS	P1-500 W/ DU-U	TRAP PRIMER WITH INTEGRAL VACUUM BREAKER AND DISTRIBUTION UNIT. CAP UNUSED DISTRIBUTION UNIT OUTLETS.	1	1/2"		0	0	0	0	0	0	0	0	
WC-1	WATER CLOSET	GC	GC	KOHLER	K-3519 W/ SEAT K-4666-C	WHITE HIGHLINE 1.0 GPF, 17-3/8" HIGH, ADA ACCESSIBLE. PRESSURE ASSIST WATER CLOSET WITH OPEN FRONT SEAT. INSTALL TRIP LEVER ON THE TANK TO THE OPEN SIDE OF THE STALL (ADD -RA TO THE MODEL # FOR RIGHT-HAND TRIP LEVER).	2	1/2"	3"	5	0	5	4	10	0	10	8	
WH-1	MILD CLIMATE WALL HYDRANT	GC	GC	WOODFORD	MODEL 84	WALL HYDRANT WITH ANTI-SIPHON VACUUM BREAKER	2	3/4"		1	0	1	0	2	0	2	0	
WATER HEATER SCHEDULE - INSTANTANEOUS							CFM1254E	POINT OF ENTRY HIGH CAPACITY WATER TREATMENT SYSTEM	1	1"	0	0	0	0	0	0	0	0
							55							41.25	22.25	48	75	

TAG	DESCRIPTION	FURNISHED BY	INSTALLED BY	MANUFACTURER	MODEL	INPUT MBH	DELIVERY	NOTES
DWH-1	DIRECT VENT GAS-FIRED INSTANTANEOUS WATER HEATER	GC	GC	NAVLEN	NPE-240A2	199	354 GPH @ 65" RISE	RATED FLOW RATE: 5.6 GPM @ 67°F RISE THERMAL EFFICIENCY: 96% PROVIDE WITH LEAD FREE "PLUMB EASY VALVE SET". GC SHALL PURCHASE WATER HEATER DIRECTLY THROUGH A NAVLEN AUTHORIZED DISTRIBUTOR (1-800-515-8794 OR WWW.NAVLEN.COM TO LOCATE AUTHORIZED DISTRIBUTOR).
DWH-2	DIRECT VENT GAS-FIRED INSTANTANEOUS WATER HEATER	GC	GC	NAVLEN	NPE-240A2	199	354 GPH @ 65" RISE	RATED FLOW RATE: 5.6 GPM @ 67°F RISE THERMAL EFFICIENCY: 96% PROVIDE WITH LEAD FREE "PLUMB EASY VALVE SET". GC SHALL PURCHASE WATER HEATER DIRECTLY THROUGH A NAVLEN AUTHORIZED DISTRIBUTOR (1-800-515-8794 OR WWW.NAVLEN.COM TO LOCATE AUTHORIZED DISTRIBUTOR).

Consultant:



NATIONAL
Engineering
4635 Trueman Blvd, Suite 250
Hilliard, Ohio 43026
Phone: (614) 751-9610
Fax: (614) 552-5240
Contact: DENNIS ALT
(614) 595-0599
DALT@nationalengineering.com

FOR CONSTRUCTION

Copyright © 2025
This drawing is a design instrument or service and as such remains the property of CHIPOTLE MEXICAN GRILL, INC. PERMISSION FOR USE OF THIS DOCUMENT IS LIMITED AND CAN BE EXTENDED ONLY BY WRITTEN AGREEMENT WITH CHIPOTLE MEXICAN GRILL, INC.



STORE NO.: 5498
TAMPA STADIUM / FL
2708 W DR. MARTIN LUTHER KING JR.
BLVD.
TAMPA, FL 33607

Revised:
11/09/2024 LL REVIEW
11/07/2024 ISSUE FOR PERMIT
03/06/2025 ISSUE FOR PERMIT

Drawn: _____

Checked: _____

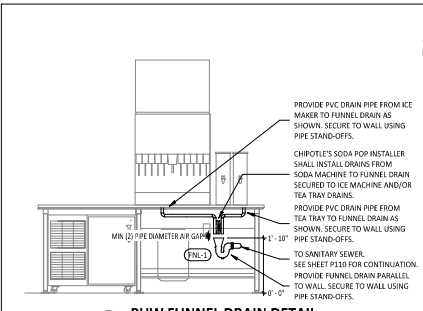
DAA DAA

Project No: 2401185

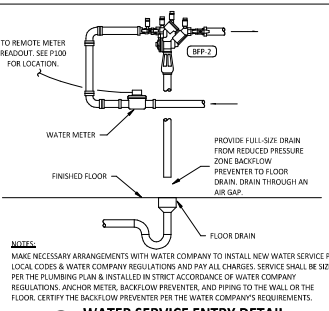
Comments:

PLUMBING SCHEDULES

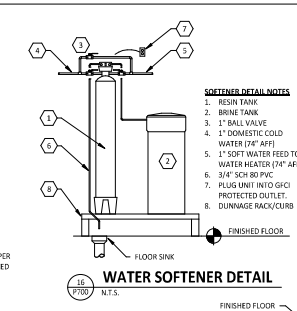
P600



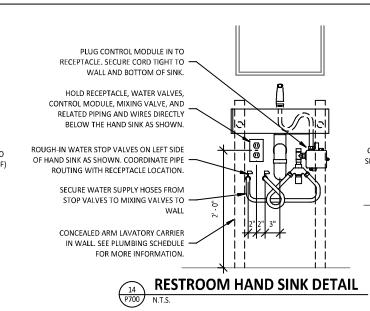
PUW FUNNEL DRAIN DETAIL
18
P700 N.T.S.



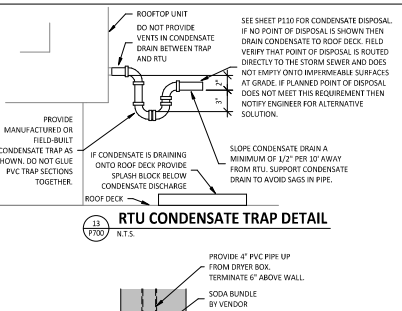
WATER SERVICE ENTRY DETAIL
17
P700 N.T.S.



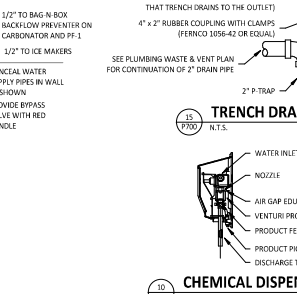
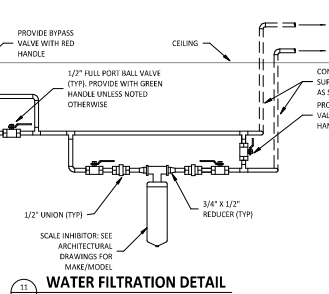
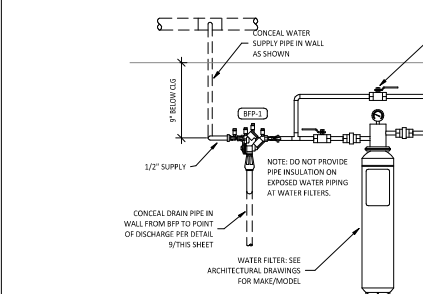
WATER SOFTENER DETAIL
16
P700 N.T.S.



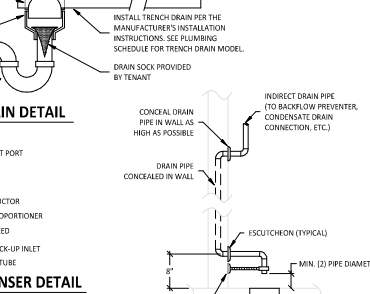
RESTROOM HAND SINK DETAIL
14
P700 N.T.S.



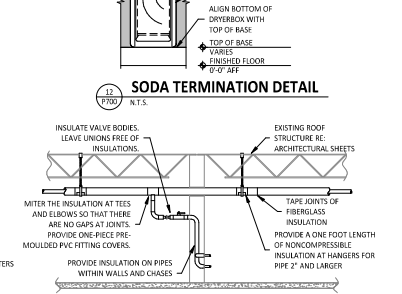
RTU CONDENSATE TRAP DETAIL
13
P700 N.T.S.



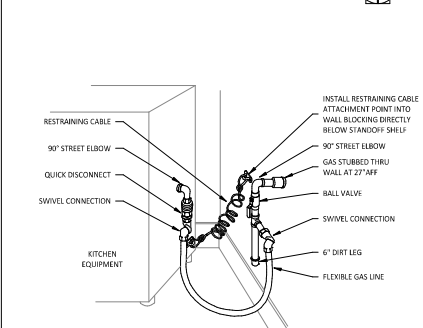
CHEMICAL DISPENSER DETAIL
10
P700 N.T.S.



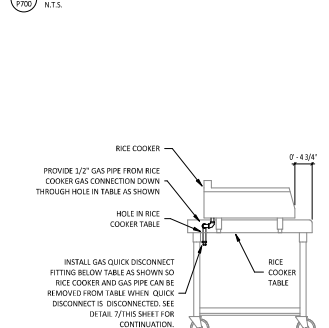
INDIRECT WASTE PIPING DETAIL
9
P700 N.T.S.



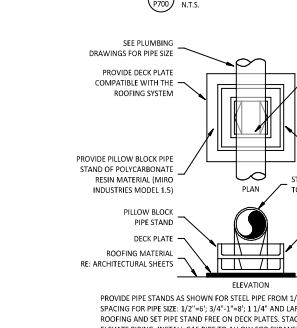
SODA TERMINATION DETAIL
11
P700 N.T.S.



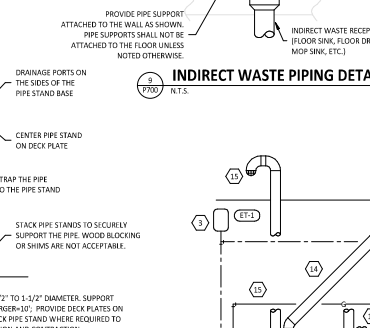
KITCHEN GAS EQUIPMENT DETAIL
7
P700 N.T.S.



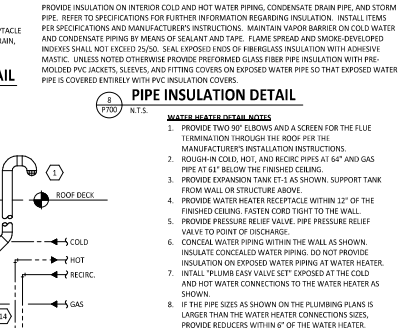
RICE COOKER GAS CONNECTION DETAIL
6
P700 N.T.S.



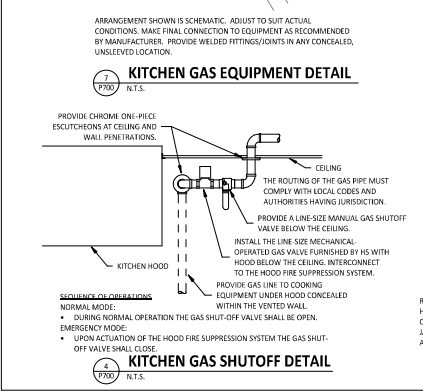
ROOFTOP PIPING SUPPORT DETAIL
5
P700 N.T.S.



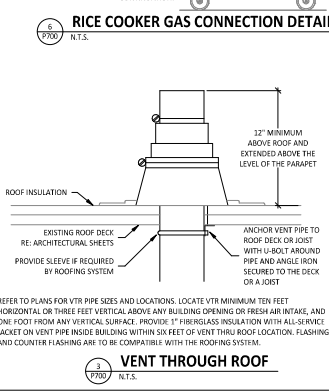
WATER HEATER DETAIL
1
P700 N.T.S.



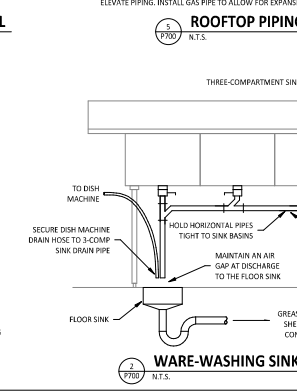
WATER HEATER DETAIL
1
P700 N.T.S.



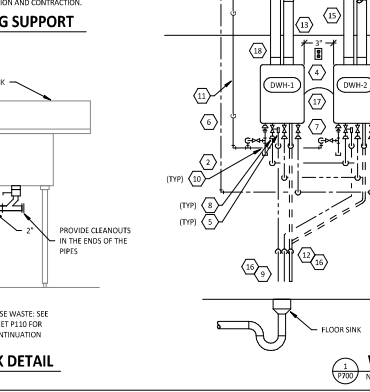
KITCHEN GAS SHUTOFF DETAIL
4
P700 N.T.S.



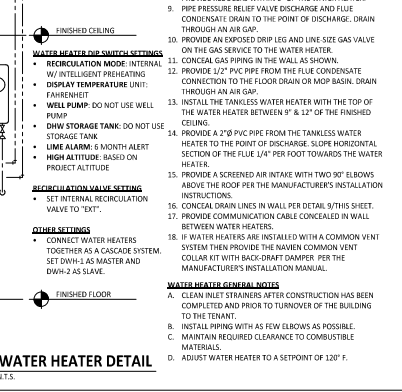
VENT THROUGH ROOF DETAIL
3
P700 N.T.S.



WARE-WASHING SINK DETAIL
2
P700 N.T.S.



WATER HEATER DETAIL
1
P700 N.T.S.



WATER HEATER DETAIL
1
P700 N.T.S.

Consultant:
NATIONAL
4635 Trueman Blvd. Suite 250
Hilliard, Ohio 43026
Phone: (614) 751-9610
Fax: (614) 552-5240
Contact: DENNIS ALT
(614) 595-0799
DALT@nationalengineering.com

FOR CONSTRUCTION
CHIPOTLE MEXICAN GRILL, INC.
CORPORATE 2025
15000 W. ALBUQUERQUE BLVD. SUITE 100
DENVER, CO 80230
TEL: (303) 733-2000
WWW.CHIPOTLE.COM

STORE NO.: 5498
TAMPA STADIUM/ FL
2708 W DR. MARTIN LUTHER KING JR.
BLVD.
TAMPA, FL 33607

Drawn	Checked
DAA	DAA
Project No:	2401185
Revision	
11/09/2024	ISSUE FOR PERMIT
11/07/2024	ISSUE FOR PERMIT
03/06/2025	ISSUE FOR PERMIT

PLUMBING DETAILS
P700

SECTION 16011 TEMPORARY & PERMANENT ELECTRICAL SERVICE

PART 1 - GENERAL

- 1.1 DEFINITIONS
 A. GFCI: Ground-fault current interrupter.
 B. RMS: Root Mean Square
 C. SPT: Single Pole, Double Throw

1.2 USE CHARGES:

- A. General: Cost or use charges for temporary facilities are not chargeable to Tenant, Architect, or Engineer and shall be included in the Contract Sum. Allow other entries to use temporary services and facilities without cost, including, but not limited to the following:
 1. Tenant's construction forces.
 2. Occupants of Project.
 3. Architect.
 4. Engineer.
 5. Testing agencies.
 6. Personnel of authorities having jurisdiction.

- B. Permanent Service: Coordinate with building Tenant and utility company to establish permanent service upon completion of the project. Contractor shall pay for all permits, aid-to-construction charges, and related fees associated with the new service.

1.3 NOTIFICATION

- A. Coordinate with Tenant to provide 72 hour written notification to other tenants of any power interruptions. Notification shall state the estimated time and duration of the electrical outage.

1.4 QUALITY ASSURANCE

- A. Standards: Comply with ANSI A10.6, NFCA's "Temporary Electrical Facilities," and NFPA 704.
 1. Trade Jurisdictions: Assigned responsibilities for installation and operation of temporary utilities are not intended to interfere with trade regulations and union jurisdictions.
 2. Electric Service: Comply with NFPA, NEMA and UL standards and regulations for temporary electric service. Install service to comply with NFPA 70.
 3. Comply with OSHA standards and regulations.

PART 2 - PRODUCTS

2.1 MATERIALS

- A. Electrical Outlets: Properly configured, NEMA polarized outlets to prevent insertion of 110- to 120V plugs into higher-voltage outlets, equipped with ground-fault circuit interrupters, reset button, and pilot light.
 B. Power Distribution System Circuits: Where permitted and overhead and exposed for surveillance, wiring circuits, not exceeding 120 V ac, 20 A rating, and lighting circuits are not to be nonmetallic sheathed cable.
 C. Main panel wiring with disconnect.
 D. Temporary lighting.
 E. 220 volt receptacles with overcurrent protection.
 F. Enclosures: NEMA AB 1 and NEMA KS 1 to meet environmental conditions of installed location.
 1. Outdoor Locations: NEMA 250, Type 3R.

PART 3 - EXECUTION

3.1 INSTALLATION

- A. Electric Power Service: Provide weatherproof, grounded electric power service and distribution system of sufficient size, capacity, and power characteristics during construction period. Include meters, transformers, and overcurrent-protected disconnecting means.
 B. Electric Distribution: Provide receptacle outlets adequate for connection of power tools and equipment.
 1. Provide waterproof connectors to connect separate lengths of electrical power cords if single lengths will not reach areas where construction activities are in progress. Do not exceed safe length/voltage ratio.
 2. Provide metal conduit, tubing, or metallic cable for wiring exposed to possible damage. Provide rigid steel conduits for wiring exposed on grades, floors, decks, or other traffic areas.
 3. Provide metal conduit enclosures or boxes for wiring devices.
 4. Provide a gang outlet, spaced at 100-foot (30-m) extension cord can reach each area for power hand tools and task lighting. Provide a separate 125-v ac, 20-A circuit for each outlet.
 C. Lighting: Provide temporary lighting with local switching that provides adequate illumination for construction operations and traffic conditions.
 1. Install and operate temporary lighting that fulfills safety and protection requirements without operating fire system.
 2. Provide one 100-W incandescent lamp (or equivalent) every 50 feet (15 m) in traffic areas.
 3. Install exterior-ward site lighting that will provide adequate illumination for construction operations, parking and traffic conditions, and signage visibility when the Work is being performed.

END OF SECTION 16011

SECTION 16060 - GROUNDING AND BONDING

PART 1 - GENERAL

1.1 SUMMARY

- A. This Section includes grounding of electrical systems and equipment. Grounding requirements specified in this Section may be supplemented by special requirements of systems described in other Sections.

1.2 QUALITY ASSURANCE

- A. Testing Agency Qualifications: Testing agency as defined by OSHA in 29 CFR 1910.7 or a member company of the International Electrical Testing Association and that is acceptable to the authorities having jurisdiction.
 1. Testing Agency Field Supervisor: Person currently certified by the International Electrical Testing Association to supervise on site testing specified in Part 3.
 B. Electrical Components, Devices, and Accessories: Listed and labeled as defined in NFPA 70, Article 100, by a testing agency acceptable to authorities having jurisdiction, and marked for intended use.
 1. Comply with UL 467.

PART 2 - PRODUCTS

2.1 GROUNDING CONDUCTORS

- A. For insulated conductors, comply with Division 16 Section "Wiring Methods."
 B. Material: Copper.
 C. Equipment Grounding Conductors: Insulated with green-colored insulation.
 D. Grounding Electrical Conductors: Stranded-cable.
 E. Bare Copper Conductors: Comply with the following:
 1. Solid Conductors: ASTM B 3.
 2. Assembly of Stranded Conductors: ASTM B 8.

2.2 CONNECTOR PRODUCTS

- A. Comply with IEEE 837 and UL 487; listed for use for specific types, sizes, and combinations of conductors and connected items.

3.1 APPLICATION

- A. Use only copper conductors.
 B. In raceways, use insulated equipment grounding conductors.
 C. Equipment Grounding Conductor Terminations: Use bolted pressure clamp.
 D. Grounding Bus: Install in electrical and telephone equipment rooms, in rooms housing service equipment, and elsewhere as indicated.
 1. Use insulated spacers: space 1 inch from wall and support from wall 6 inches above finished floor, unless otherwise indicated.
 2. At doors, route the bus up to the top of the door frame, across the top of the doorway, and down to the specified height above the floor.

3.2 EQUIPMENT GROUNDING CONDUCTORS

- A. Comply with NFPA 70, Article 250, for types, sizes, and quantities of equipment grounding conductors, unless specific types, sizes, or quantities are otherwise required by NFPA 70 or indicated.

3.3 INSTALLATION

- A. Grounding Conductors: Route along shortest and straightest paths possible, unless otherwise indicated. Avoid obstructing access or placing conductors that may be subjected to stress, impact, or damage.
 B. General: Make connections so galvanic action or electrolysis possibility is minimized. Select connectors, connection hardware, conductors, and connection methods so metals in direct contact will be galvanically compatible.
 C. Equipment Grounding Conductor Terminations: For No. 8 AWG and larger, use pressure-type grounding lugs. No. 10 AWG and smaller grounding conductors may be terminated with wedge pressure-type connectors.
 C. Tighten screws and bolts for grounding and bonding connectors and terminals according to manufacturer's published torque-tightening values. If manufacturer's torque values are not indicated, use those specified in UL 486A.
 D. Compression-type Connections: Use hydraulic compression tools to provide correct circumferential pressure for compression connectors. Use tools and dies recommended by connector manufacturer. Provide embossed die code or other standard method to make a visible indication that a connector has been adequately compressed on grounding conductor.

END OF SECTION 16060

SECTION 16100 - WIRING METHODS

PART 1 - GENERAL

1.1 SECTION REQUIREMENTS

- A. Summary: Building wire and cable and associated splices, connectors, and terminations for wiring systems rated 600 V and less, and twisted-pair cable; and raceways and boxes.

PART 2 - PRODUCTS

2.1 WIRES AND CABLES

- A. Connectors and Splices: Wiring connectors of size, ampacity rating, material, and type and class for application and for service indicated.
 B. RACEWAYS:
 A. Wireways: Screwed cover type, with manufacturer's standard finish.
 B. Outlet and Device Boxes: Sheet metal boxes, except use cast-metal boxes at exterior, interior exposed, and exterior gang locations.
 C. Pull and Junction Boxes: Sheet metal boxes, except use nonmetallic boxes with gasketed covers at interior and exterior gang locations.
 2.3 ENCLOSURES
 A. Hinged-Cover Enclosures: NEMA 250, steel enclosure with continuous hinge cover and flush latch. Finish inside and out with manufacturer's standard enamel.
 B. Cabinets: NEMA 250, Type 1, unless otherwise indicated.

PART 3 - EXECUTION

3.1 INSTALLATION

- A. Install wires and cables according to the NECA's "Standard of Installation."
 B. Wiring at Outlets: Install with at least 1/2-inch slack conductor at each outlet.
 C. Conceal wiring, unless otherwise indicated, within finished walls, ceilings, and floors.
 D. Boxes and Enclosures: In damp or wet locations use NEMA 250, Type 4, stainless steel.
 E. Use raceway fittings compatible with raceways and suitable for use and location. For intermediate metal conduit, use threaded rigid steel conduit fittings, unless otherwise indicated.
 F. Raceways Embedded in Slabs: Install in middle third of the slab thickness where practical, and leave at least 1-inch concrete cover.
 G. Install exposed raceways parallel to or at right angles to nearby surfaces or structural members, and follow the surface contours as much as practical.
 H. Join raceways with fittings, disengaged and approved for the purpose and make joints tight. Use bonding bushings or wedges at connections subject to vibration. Use bonding jumpers where joints cannot be made tight. Use insulating bushings to protect raceways.
 I. Use rigid vinyl mechanical insulating sleeves, Use No. 14 AWG zinc-coated steel or monofilament plastic line having less than 200-lb tensile strength, leave not less than 18 inches of slack at each end of the pull wire.

- J. Install raceway sealing fittings where required by the NEC and at wiring entrances to refrigerated spaces. Locate at suitable, approved, accessible locations and fill them with UL-listed sealing compound. For concealed raceways, install each fitting in a flush steel box with a blank cover plate having a finish similar to that of adjacent walls or surfaces.
 K. Sub- or Connections for Equipment: Extend conductors to equipment with rigid metal conduit; flexible metal conduit may be used 3 inches above the floor.
 L. Install a separate green ground conductor in surface metal raceway from the junction box supplying the raceway to size, capacity, and power characteristics during construction period. Include meters, transformers, and overcurrent-protected disconnecting means.

3.2 IDENTIFICATION MATERIALS AND DEVICES

- A. Install at locations for most convenient viewing without interference with operation and maintenance of equipment.
 B. Coordinate names, abbreviations, colors, and other designations used for electrical identification with corresponding designations indicated in the Contract Documents or required by codes and standards. Use consistent designations features mounted in ceiling space and on ceiling.
 PART 2 - PRODUCTS
 2.1 FIXTURES AND FIXTURE COMPONENTS, GENERAL
 A. Metal Parts: Free from burrs, sharp corners, and edges. Steel, unless otherwise indicated. Form and support to prevent wiring and sagging.
 B. Doors, Frames, and Other Internal Access: Smooth operating, free from light leakage under operating conditions, and arranged to permit re-lamping without use of tools. Arrange doors, frames, lenses, diffusers, and other pieces to prevent accidental falling during re-lamping and when secured in operating position.
 C. Lenses, Diffusers, Covers, and Globes: 100-percent virgin acrylic plastic or annealed clear glass, unless otherwise indicated.
 PART 3 - EXECUTION
 3.1 INSTALLATION
 A. Set units level, plumb, and square with ceiling and walls, and secure.
 B. Support for Recessed and Semi-recessed Grid-Type Fluorescent Fixtures: Install ceiling support system rods or wires at a minimum of 4 rods or wires for each fixture, located not more than 8 inches from fixture corners.
 C. Support for Suspended Fixtures: Support according to manufacturer's recommendations.
 D. Lamping: Where specific lamp designations are not indicated, lamp units according to manufacturer's written instructions.

END OF SECTION 16100

SECTION 16140 - WIRING DEVICES

PART 1 - GENERAL

1.1 SECTION REQUIREMENTS

- A. Submittals: None.
 B. Comply with NEMA WD 1.
 C. Comply with NFPA 70.
 PART 2 - PRODUCTS
 2.1 DEVICES
 A. General: Listed and labeled as defined in NFPA 70, Article 100, by a testing agency acceptable to authorities having jurisdiction.
 B. Color: Per Material Schedule on sheet 0303.
 C. Receptacles: Heavy-duty grade, NEMA W06, Configuration 5-20R unless otherwise indicated.
 D. Ground-Fault Circuit Interrupter Receptacles: Integral duplex receptacle; for installation in box without an adapter. Feed through type with a 2-3/16-inch-deep outlet.
 E. Isolated Ground Receptacles: Equipment grounding contacts connected only to the green grounding screw terminal of the device with inherent electrical isolation from mounting strap.
 F. Snap Switches: Heavy-duty, quiet type.
 G. Wall Rate: Per Material Schedule on sheet 0303.
 H. Floor Service Fittings: Modular, above-floor, dual-service units suitable for wiring method used.
 PART 3 - EXECUTION
 3.1 INSTALLATION
 A. Install devices and assemblies plumb and secure.
 B. Mount devices flush with long dimension vertical unless otherwise indicated.
 C. Protect devices and assemblies during painting.
 D. Install wall plates when painting is complete and paint is cured.
 END OF SECTION 16140

*****On December 21, 2024 Mr. Richard T. Jones, PE, the engineer of record, completed the required coursework(ABCC) and logged it on the NCEES website.*****



SECTION 16442 - PANELBOARDS

PART 1 - GENERAL

1.1 SECTION REQUIREMENTS

- A. Submittals: None.
 B. Comply with NFPA 70.
 C. Comply with NEMA PB 1.

PART 2 - PRODUCTS

- 2.1 PANELBOARDS AND LOAD CENTERS
 A. Manufacturers: Subject to compliance with requirement, provide products by one of the following:
 1. Panelboards, Overcurrent Protective Devices, Controllers, Connectors, and Accessories:
 a. Square D Co.
 b. Eaton Corp.; Cutler-Hammer Products.
 c. General Electric Co.; Electrical Distribution & Control Div.
 d. Siemens Energy & Automation.
 B. Receptacles: NEMA PB 1, Type 1.
 1. Load Center Capacity: as shown on drawings.
 2. Front: Secured to box with concealed trim clamps.
 3. Doors: With concealed hinges, flush catches, and tumbler locks, all keyed alike.
 4. Bus: Hard drawn copper of 98 percent conductivity.
 C. Moulded-Case Circuit Breakers: NEMA AB 1, plug-in type. Single-handle for multiple circuit breakers. Appropriate for applications, including Type SMD for repetitive-switching lighting loads and Type HACR for heating, air conditioning, and refrigerating equipment.
 D. Connectors: NEMA ICS 1, Class A combination connectors.

PART 3 - EXECUTION

3.1 INSTALLATION

- A. Install panelboards and accessory items according to NEMA PB 1.1. Provide type, permanently-mounted English and Spanish circuit directories showing the panel schedule as installed in each panelboard.
 B. Mounting Heights: Top of trim 74 inches above finished floor, unless otherwise indicated.
 C. Future Circuit Provisions at Flush Panel Boards: Stub four empty 3/4-inch conduits from panelboard into accessible or concealed ceiling space.
 D. Wiring in Panelboard Gutters: Arrange conductors into groups, bundle and wrap with wire ties according to NEC guidelines.
 E. Other Electrical Connections and Terminals, including grounding connections, according to manufacturer's published torque tightening values. Where manufacturer's torque values are not indicated, use those specified in UL 486A.
 F. Label all electrical, mechanical insulations and electrical tests stated in NETS AITS.

END OF SECTION 16442

SECTION 16500 - LIGHTING

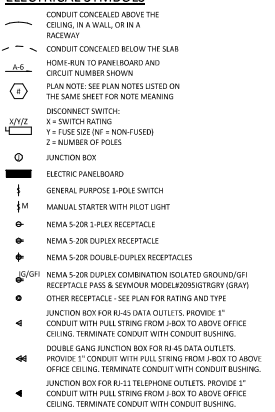
PART 1 - GENERAL

1.1 SECTION REQUIREMENTS

- A. Submittals: None.
 B. Fixtures, Emergency Lighting Units, and Accessories: Listed and labeled as defined in NFPA 70, Article 100, by a testing agency acceptable to authorities having jurisdiction.
 C. Coordinate ceiling-mounted luminaires with ceiling construction, mechanical work, and security and fire-prevention features mounted in ceiling space and on ceiling.
 PART 2 - PRODUCTS
 2.1 FIXTURES AND FIXTURE COMPONENTS, GENERAL
 A. Metal Parts: Free from burrs, sharp corners, and edges. Steel, unless otherwise indicated. Form and support to prevent wiring and sagging.
 B. Doors, Frames, and Other Internal Access: Smooth operating, free from light leakage under operating conditions, and arranged to permit re-lamping without use of tools. Arrange doors, frames, lenses, diffusers, and other pieces to prevent accidental falling during re-lamping and when secured in operating position.
 C. Lenses, Diffusers, Covers, and Globes: 100-percent virgin acrylic plastic or annealed clear glass, unless otherwise indicated.
 PART 3 - EXECUTION
 3.1 INSTALLATION
 A. Set units level, plumb, and square with ceiling and walls, and secure.
 B. Support for Recessed and Semi-recessed Grid-Type Fluorescent Fixtures: Install ceiling support system rods or wires at a minimum of 4 rods or wires for each fixture, located not more than 8 inches from fixture corners.
 C. Support for Suspended Fixtures: Support according to manufacturer's recommendations.
 D. Lamping: Where specific lamp designations are not indicated, lamp units according to manufacturer's written instructions.

END OF SECTION 16500

ELECTRICAL SYMBOLS



SECURITY SYSTEM KEYWORD: SEE ELECTRICAL POWER PLAN FOR MORE INFORMATION.
 SECURITY SYSTEM DOOR CONTACT: SEE ELECTRICAL POWER PLAN FOR MORE INFORMATION.

ELECTRICAL MATERIAL SCHEDULE

CATEGORY	APPLICATION	ALLOWABLE MATERIAL
CONDUCTORS	#10 AWG AND SMALLER	SOLID CU, TYPE THHN/THWN OR XHHW
	#8 AWG AND LARGER	STRANDED CU, TYPE THHN/THWN OR XHHW
	FIELD MADE CORD (EXPOSED INDOOR LOCATIONS)	TYPE SO OR SJ SERVICE CORD WITH CU CONDUCTORS
CONDUITS	INDOOR, EXPOSED	FIBERGLASS METALLIC TUBING U.N.O.
	INDOOR, WITHIN 1-1/2" OF ROOF DECK	INTERMEDIATE METAL CONDUIT
	INDOOR, CONCEALED ABOVE GRADE	ELECTRICAL METALLIC TUBING, FLEXIBLE METAL CONDUIT, OR METAL CLAD CABLE
	CONNECTION TO VIBRATING EQUIPMENT (EXPOSED WET OR DAMP LOCATIONS)	LIQUIDTIGHT FIBERGLASS METAL CONDUIT
	CONNECTION TO VIBRATING EQUIPMENT (EXPOSED INDOOR DRY LOCATIONS)	FLEXIBLE METAL CONDUIT
	OUTDOOR, ABOVE GRADE, EXPOSED OR CONCEALED	INTERMEDIATE METAL CONDUIT
	LOW VOLTAGE, INDOOR, ABOVE GRADE	ELECTRICAL METALLIC TUBING
	LOW OR LINE VOLTAGE, BELOW GRADE	RIGID NON-METALLIC TUBING (SCH20X1/40 PVC)
	IN KITCHEN, OFFICE, OR NON-PUBLIC SPACES	GRAY DEVICE WITH STAINLESS STEEL COVER
	IG OR GFI RECEPTABLES	GRAY DEVICE WITH STAINLESS STEEL COVER PLATE
WIRING DEVICES	DN DRIMMALL IN CONTROL ROOM	WHITE DEVICE WITH WHITE COVER PLATE
	ON HOT ROLLED STEEL, RICHTELE, OR OTHER BLACK FINISHES	BLACK DEVICE WITH BLACK COVER PLATE
	IN RESTROOMS	WHITE DEVICE WITH WHITE COVER PLATE

ELECTRICAL GENERAL NOTES

- A. GENERAL NOTES APPLY TO ELECTRICAL SHEETS.
 B. ELECTRICAL WORK SHALL BE DONE IN ACCORDANCE WITH THE ELECTRICAL CODE AND IN ACCORDANCE WITH THE AUTHORITY HAVING JURISDICTION. SEE ARCHITECTURAL SHEETS FOR THE PREVIOUS CODES.
 C. WIRING SHALL BE (2)B&2, #12 G IN 3/4" C UNLESS NOTED OTHERWISE.
 D. INDIVIDUAL CONDUIT HOLE RUNS SHOWN SHALL NOT BE CONSOLIDATED.
 E. CIRCUIT EMERGENCY LIGHTS, ILLUMINATED EXT SIGNS, AND NIGHT LIGHTS AHEAD OF LOCAL SWITCHING.
 F. INSTALL WALL SWITCHES AT 48" AFF TO CENTER OF SWITCH AND RECEPTABLES AT 18" AFF TO CENTER OF RECEPTABLE UNLESS NOTED OTHERWISE.
 G. INSTALL CONDUIT CONCEALED ABOVE THE CEILING, IN WALLS, OR IN RACEWAYS.
 H. PROVIDE 1" CONDUIT WITH PULL STRINGS FROM EACH J-BOX FOR TELEPHONE OR DATA JACKS TO ABOVE OFFICE CEILING. SEE MATERIAL SCHEDULE FOR ALLOWABLE CONDUIT MATERIALS. PROVIDE CONDUITS WITH MINIMUM ELBOWS AND TERMINATE CONDUITS ABOVE OFFICE CEILING WITH CONDUIT BUSHING.
 I. THE TERM "FURNISH" MEANS SUPPLY AND DELIVER TO THE PROJECT SITE, READY FOR UNLOADING, UNPACKING, ASSEMBLY, INSTALLATION, AND SIMILAR OPERATIONS. THE TERM "INSTALL" DESCRIBES THE OPERATIONS AT THE PROJECT SITE INCLUDING THE ACTUAL UNLOADING, UNPACKING, ASSEMBLY, SELECTING, PLACING, ANCHORING, APPLYING, WORKING TO DIMENSION, FINISHING, CURING, PROTECTING, CLEANING, AND SIMILAR OPERATIONS. THE TERM "PROVIDE" MEANS TO FURNISH AND INSTALL, COMPLETE AND READY FOR THE INTENDED USE.
 J. DIMENSIONS SHOWN IN ELECTRICAL ELEVATIONS ARE FROM THE WALL FINISH UNLESS UNLESS NOTED OTHERWISE.
 K. INSTALLED LABELING CALLED FOR IN THE ELECTRICAL DRAWINGS USING ENGRAVED PHENOLIC PLATES ON WALL IMMEDIATELY ABOVE RECEPTABLES.
 L. IF THERE ARE BATED ASSEMBLIES WITHIN CHIPOTLE'S SPACE COORDINATE ANY REQUIRED CONDUIT RUNS WITH SECURITY VENDOR.

ELECTRICAL ABBREVIATIONS

AFF	ABOVE FINISHED FLOOR
ARG	ABOVE FINISHED GRADE
CONMT	CONDUIT
(E)	EXISTING
EXTIF	EXISTING GROUND
GFCI	GROUND FAULT CIRCUIT INTERRUPT
IG	ISOLATED GROUND
JB	JUNCTION BOX
NL	NIGHT LIGHT
S	SURFACE MOUNTED PLATE
WP	WEATHERPROOF
CO2AS	TEENANT'S CO2 ALARM SUPPLIER
GC	GENERAL CONTRACTOR
HES	TEENANT'S HVAC EQUIPMENT SUPPLIER
HS	TEENANT'S HOOD SUPPLIER
KES	TEENANT'S KITCHEN EQUIPMENT SUPPLIER
LANO	LANDSCAPER
MS	TEENANT'S MUSIC SYSTEMS SUPPLIER
TAB	TEENANT'S TEST AND BALANCE VENDOR
TCC	TEENANT'S CABING CONTRACTOR
TDC	TEENANT'S DUCT CLEANER
TEMS	TEENANT'S ENERGY MANAGEMENT SYSTEM SUPPLIER
TES	TEENANT'S LIGHT/LAMP SUPPLIER
TMB	TEENANT'S MENU BOARD SUPPLIER
TMS	TEENANT'S MILLWORK SUPPLIER
TP	TEENANT'S PHONE SUPPLIER
TPS	TEENANT'S PANELBOARD SUPPLIER
TSS	TEENANT'S SEALING SUPPLIER
TUV	TEENANT'S UV SANITIZER SUPPLIER
WCS	TEENANT'S WALK-IN COOLER SUPPLIER
WHS	TEENANT'S WATER HEATER SUPPLIER

Consultant:

NATIONAL
 4635 Tueltgen Blvd, Suite 250
 Hilliard, Ohio 43026
 Phone: (614) 751-9610
 Fax: (614) 552-5240
 Contact: DENNIS ALT
 (614) 595-0599
 DALT@nationalengineering.com

CONTRACT 2025
 THIS DOCUMENT IS AN INSTRUMENT OF SERVICE AND AS SUCH REMAINS THE PROPERTY OF CHIPOTLE MEXICAN GRILL, INC. PERMISSION FOR USE OF THIS DOCUMENT IS LIMITED AND CAN BE REVOKED AT ANY TIME WITHOUT AGREEMENT WITH CHIPOTLE MEXICAN GRILL, INC.

 CHIPOTLE MEXICAN GRILL, INC.
 #2000 LEGACY
 COLUMBUS, OH 43260-2666
 TELEPHONE: 614.751.9610
 INTERNET: WWW.CHIPOTLE.COM

STORE NO.: 5498
 TAMPA STADIUM/ FL
 2708 W DR. MARTIN LUTHER KING JR.
 BLVD.
 TAMPA, FL 33607

Issue Record

Issue No.	Date	Description	Status
1	11/09/2024	ISSUE FOR PERMIT	RESOLVED
2	11/07/2024	ISSUE FOR PERMIT	RESOLVED
3	03/06/2025	ISSUE FOR PERMIT	RESOLVED
4			
5			
6			
7			
8			
9			
10			

Permit:
 1 01/17/2025 PERMIT COMMENTS

Drawn: DAA Checked: DAA

Project No:
 2401185

Grids:

ELECTRICAL SPECIFICATIONS

E010

RELAY	PANEL	CIRCUIT	AREA SERVED	CONTROL	TIME ON	TIME OFF	DIMMER CONTROL	NOTES
R1	A	32	KITCHEN A	TIMELOCK	7:00:00 AM	12:00:00 AM	N/A	SINGLE POLE (NC)
R2	A	32	KITCHEN B	TIMELOCK	7:00:00 AM	12:00:00 AM	N/A	SINGLE POLE (NC)
R3			SPARE				N/A	SINGLE POLE (NC)
R4	A	30	DINING ROOM A	TIMELOCK	10:00:00 AM	12:00:00 AM	N/A	SINGLE POLE (NC)
R5	A	30	DINING ROOM B	TIMELOCK	10:00:00 AM	12:00:00 AM	N/A	SINGLE POLE (NC)
R6	A	30	DINING ROOM DL	TIMELOCK	10:00:00 AM	12:00:00 AM	N/A	SINGLE POLE (NC)
R7	A	28	RESTROOM EXHAUST FAN	TIMELOCK	7:00:00 AM	12:00:00 AM	N/A	SINGLE POLE (NC)
R8	A	42	EXT. LIGHTING/SIGNAGE	TIMELOCK	SUNSET - 1 HR	12:00:00 AM	N/A	SINGLE POLE (NC)

DESCRIPTION	QUANTITY	FURNISHED BY	INSTALLED BY	MANUFACTURER	MODEL	REMARKS
LIGHTING CONTROL PANEL	1	TLS	GC	ACUTY	ARP INTERCOM NET 8FCR MVOLT HLK FM DTC OPTLS	8 RELAY PANEL FOR DIMMING CONTROL WITH FLUSH MOUNT ENCLOSURE AND DIGITAL TIME CLOCK
WALL-MOUNTED OVERRIDE SWITCH (4 CHANNEL)	1	TLS	GC	ACUTY	HPD00A 4P WH	SEE LIGHTING CONTROL DIAGRAM FOR SWITCH CONFIGURATION
WALL-MOUNTED DIMMER SWITCH	2	TLS	GC	COOPER	SALDR-W	SLIDE DIMMER COMPATIBLE WITH UP TO 300W LED LIGHTING. SET AT 50%. IF DINING ROOM LIGHTS FLICKER AT THIS DIMMER SETTING THEN GC SHALL PROVIDE LUTRON DVL-253P DIMMER AS REPLACEMENT.
WALL-MOUNTED LINE VOLTAGE OCCUPANCY SENSOR	3	TLS	GC	HUBBELL	1HWTS 1-N-WH	WHITE DUAL TECHNOLOGY SINGLE RELAY WITH 1 BUTTON AND NEUTRAL WIRING

TAG	QUANTITY	TYPE	MOUNT	FURNISHED BY	INSTALLED BY	MANUFACTURER	MODEL	LAMP(S)	VOLTS	WATTS	SPECIAL REQUIREMENTS
A1	13	2x2 LED LENSED TROFFER	LAY-IN	TLS	GC	NORA LIGHTING	WPOBL E227334 W	(1) 3000K LED	120	30	COMPATIBLE WITH 0-10V DIMMING, FACTORY LOCKED TO 3000K
B1	8	RECESSED 6IN CAN LIGHT	CEILING	TLS	GC	NORA LIGHTING	NHIC-6624ATF with WFI-57W/M1 Trim	(1) 17W ECOSTORY FCO-PA908C-17-GU24-27K-25D LED (25'-2700K) W/ GU24 BASE	120	17	
B2	44	RECESSED 6IN CAN LIGHT W/ LED TRIM	CEILING	TLS	GC	NORA LIGHTING	NHIC-6624ATF with NLICB-661290W LED TRIM	INTEGRAL 3000K LED	120	17	LED TRIM FURNISHED WITH GU24 SOCKET ADAPTER
B3	3	RECESSED 6IN CAN LIGHT W/ BLACK LED TRIM	CEILING	TLS	GC	NORA LIGHTING	NHIC-6624ATF with NLICRC2-651278B LED TRIM	INTEGRAL 3000K LED	120	17	BLACK LED TRIM FURNISHED WITH GU24 SOCKET ADAPTER
C0	2	LOW PROFILE LED - 3 FT	SURFACE	TLS	GC	HERA LIGHTING	EL/LED12/WW	INTEGRAL 3000K LED	120	5	FURNISHED WITH COVERS, CONNECTORS, AND ONE HARDWIRE BOX OR CORD/PLUG PER SECTION
C2	6	LOW PROFILE LED - 3 FT	SURFACE	TLS	GC	HERA LIGHTING	EL/LED734/WW	INTEGRAL 3000K LED	120	12	FURNISHED WITH COVERS, CONNECTORS, AND ONE HARDWIRE BOX OR CORD/PLUG PER SECTION
C3	5	LOW PROFILE LED - 4 FT	SURFACE	TLS	GC	HERA LIGHTING	EL/LED746/WW	INTEGRAL 3000K LED	120	15	FURNISHED WITH COVERS, CONNECTORS, AND ONE HARDWIRE BOX OR CORD/PLUG PER SECTION
C4	8	LOW PROFILE LED - 5 FT	SURFACE	TLS	GC	HERA LIGHTING	EL/LED99/WW	INTEGRAL 3000K LED	120	18	FURNISHED WITH COVERS, CONNECTORS, AND ONE HARDWIRE BOX OR CORD/PLUG PER SECTION
E1	5	EMERGENCY LIGHT - DUAL HEAD	VARIOUS	TLS	GC	EXITRONIX	LED-90	(2) SPECIAL LED	120	2	90 MINUTE BATTERY BACKUP
E2	3	EXTERIOR REMOTE EMERGENCY LIGHT	VARIOUS	TLS	GC	EXITRONIX	MLED5-B-WP	(1) SPECIAL LED	4	1	LOW VOLTAGE REMOTE EMERGENCY LIGHT POWERED BY REMOTE-CAPABLE EXIT SIGN WITH MOUNTING PLATE
E4	4	WHITE EXIT SIGN WITH EMERGENCY LIGHT - STANDARD RED LETTERS	VARIOUS	TLS	GC	EXITRONIX	CLED-U-WH	(1) SPECIAL LED	120	2	90 MINUTE BATTERY BACKUP WITH INTEGRAL EMERGENCY LIGHT, REMOTE HEAD CAPABLE
E7	6	EMERGENCY LIGHT	VARIOUS	TLS	GC	DUAL LITE	EV2	(2) 1W INTEGRAL LED	120	1	90 MINUTE BATTERY BACKUP
H1	8	HOOD LIGHT	SURFACE	THS/TLS	THS	FURNISHED WITH HOOD	(1) TCP L16A19N1527K	120	23	INSTALL LAMP FURNISHED SEPARATELY BY LIGHTING SUPPLIER	
J4	2	DECORATIVE PENDANT	SURFACE	TLS	GC	BARNLIGHT	BLE-C-BN-100-ASH-58-K-1-00-NA-GU24	GREEN CREATIVE BA1000M 927/60124/B	120	9	WITH BLACK LAMP SHADE, BLACK CORD, AND CORK LAMP HOOKS
P5	11	PENDANT	SURFACE	TLS	GC	HI-LITE MFG	H-LC-91/CR12-91/20W/UL	TCP K25204027CCQ	120	5	ADJUST CORD LENGTH FOR MOUNTING HEIGHT CALLED FOR IN ARCHITECTURAL DRAWINGS
P6	3	DECORATIVE DINING ROOM PENDANT	SURFACE	TLS	GC	BARN LIGHT	BLE-C-9F1-133-35630-3	INTEGRAL LED	120	30	HARDWARE SET OF (3) HEADS WITH UNIVERSAL CANOPY AND STANDARD BLACK CABLES
P13	1	PATIO LIGHT POLE	FLOOR	GC	GC	HUBBELL	ASL2-320L-170-4K7-3	LED	208	168	
P12	1	PATIO LIGHT POLE	FLOOR	GC	GC	HUBBELL	ASL2-320L-170-4K7-3	LED	208	168	
S1	1	DRIVE UP PICK-UP WINDOW CHIME/STROBE	WALL	TLS	GC	FEDERAL SIGNAL	SLMS009 W/ SLMBW-012-024	INTEGRAL	16	0	SET SWITCH A TO "CHIME 1 SINGLE" (L0113) AND SWITCH B TO "CHIME 2 SINGLE" (D0113)
T1	11	TRACK HEAD	TRACK	TLS	GC	JUNO	R605L30K90CR PDIM WFL BL	INTEGRAL LED	120	10	BLACK CYLINDER TRACK HEAD W/ UNIVERSAL 120V TRAC. ADAPTER AND WIDE FLOOD BEAM
T-4	1	TRACK (4 FEET)	SURFACE	TLS	GC	JUNO	T-4T BK	N/A	120	0	SINGLE CIRCUIT, BLACK FINISH
T-6	3	TRACK (6 FEET)	SURFACE	TLS	GC	JUNO	T-6T BK	N/A	120	0	SINGLE CIRCUIT, BLACK FINISH
TCL-0.5	1	CURRENT LIMITER (60W)	SURFACE	TLS	GC	JUNO	TCL(M)1 BK W/ TCLCB 0.5A BLC	N/A	120	0	BLACK CURRENT LIMITING END FEED
TCL-2	1	CURRENT LIMITER (240W)	SURFACE	TLS	GC	JUNO	TCL(M)1 BK W/ TCLCR 2A BLC	N/A	120	0	BLACK CURRENT LIMITING END FEED
W3	4	WIC LED FIXTURE	SURFACE	WCS	GC	FURNISHED WITH WIC	FURNISHED WITH WIC	INTEGRAL LED	120	29	WET-RATED COOLER FIXTURE
X6	5	WALL PACK	WALL	TLS	GC	RAB LIGHTING	WPLF026	INTEGRAL LED	120	26	
X9	1	LED CHANNEL LIGHT	SURFACE	TLS	GC	PARADIGM LED	AMC-2410-S W/ OPAL LENS AND END CAPS	FLEXR-45-30-67-24	120	45	FURNISHED W/ REMOTE-MOUNTED REMOTE-SENSE LED DRIVER. SEE PLAN FOR LENGTHS.

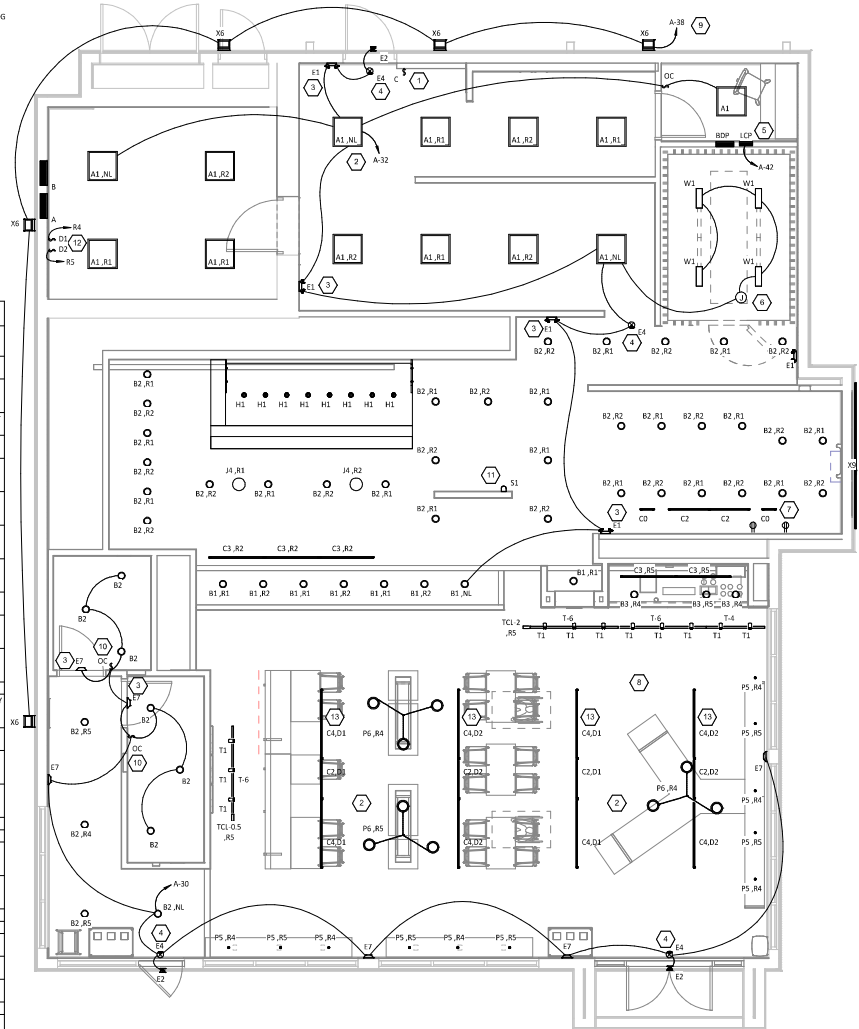
- LIGHTING FIXTURE SCHEDULE NOTES**
- FLUORESCENT LAMPS NOT INCLUDED WITH THE FIXTURE ARE TO BE MANUFACTURED BY SYLVANIA UNLESS OTHERWISE NOTED. PHILIPS FLUORESCENT LAMPS WILL BE AN ACCEPTABLE ALTERNATE.
 - SEE THE ARCHITECTURAL REFLECTED CEILING PLAN FOR EXACT LIGHT LOCATIONS.
 - SEE THE ARCHITECTURAL LIGHTING DETAILS FOR FIXTURE CONSTRUCTION DETAILS.

ELECTRICAL LIGHTING PLAN NOTES

- INSTALL WALL-MOUNTED LIGHTING OVERRIDE SWITCH AND CONNECT TO LCP AS SHOWN IN DETAIL 6/E710
- FOR UNCIRCUITED LIGHT FIXTURES, CONNECT TO RELAY CIRCUIT INDICATED NEXT TO THE FIXTURE TAG THROUGH THE LIGHTING CONTROL PANEL (LCP) UNLESS NOTED OTHERWISE.
- WALL MOUNTED THE EMERGENCY LIGHT FIXTURE AT 6' BELOW THE CEILING UNLESS NOTED OTHERWISE
- VERIFY MOUNTING HEIGHT OF EXIT SIGN PRIOR TO ROUGH IN. EXIT SIGN MUST BE VISIBLE FROM AREA SERVED AFTER BUILDING SYSTEMS HAVE BEEN INSTALLED. SEE ARCHITECTURAL ELEVATIONS FOR FURTHER INFORMATION.
- INSTALL LIGHTING CONTROL SYSTEM PER DETAIL 6/E710.
- INSTALL LIGHT FIXTURES FURNISHED WITH THE WALK-IN COOLER. PROVIDE UNSWITCHED CONDUCTOR FROM LIGHTING CIRCUIT TO WALK-IN COOLER LIGHTING. 3' BOX AND FROM 3' BOX TO LIGHT FIXTURES AS SHOWN. CONDUIT BETWEEN LIGHT FIXTURES SHALL BE ROUTED ON THE INTERIOR OF THE WALK-IN COOLER. SEAL INTERIOR AND EXTERIOR OF CONDUITS WHERE THEY PASS THROUGH THE WALK-IN COOLER ENVELOPE PER THE NEC.
- PROVIDE (2) GFCI RECEPTACLES FOR UNDERSHELF LIGHTING AS SHOWN. CONNECT TO SWITCHED LEG OF THE KITCHEN LIGHTING CIRCUIT. SEE ELEVATIONS ON SHEET 200 FOR RECEPTACLE LOCATIONS, HEIGHTS, AND CIRCUITING. INSTALL RECEPTACLES IN A HORIZONTAL ORIENTATION.
- PROVIDE UNSTRUT AS SHOWN ON THE ARCHITECTURAL RCP PER THE ARCHITECTURAL UNISTRUT DETAIL TYPICAL.
- CONNECT EXTERIOR LIGHTING CIRCUIT TO CIRCUIT SHOWN THROUGH THE EXTERIOR LIGHTING CONTRACTOR PANEL PER DETAIL 6/E710.

ELECTRICAL LIGHTING PLAN NOTES

- INSTALL WALL-MOUNTED OCCUPANCY SENSOR FURNISHED BY LIGHTING SUPPLIER AT 42" AFF. ADJUST OCCUPANCY SENSOR TO PROVIDE AUTOMATIC ON/AUTOMATIC OFF OPERATION WITH A FIXED TIMER OF 30 MINUTES AND WITH BOTH THE PASSIVE INFRARED AND ULTRASONIC SENSORS ENABLED.
- INSTALL DIMMER/STROBE FURNISHED WITH VEHICLE DETECTION SYSTEM ON WALL 12" BELOW CEILING AND CONNECT TO VEHICLE DETECTOR SYSTEM PER THE MANUFACTURER'S INSTALLATION INSTRUCTIONS.
- INSTALL WALL-MOUNTED DIMMERS ABOVE PANELBOARDS 6" ABOVE LAY-IN CEILING FOR CONTROL OF DINING ROOM OVERHEAD STRIP LED LIGHTS. CONNECT DIMMERS TO RELAYS SHOWN THROUGH THE LIGHTING CONTROL PANEL. SET DIMMERS AT 50%.
- CONNECT DINING ROOM (RELAY CIRCUITS R4 AND R5) OVERHEAD STRIP LED LIGHTS TO THE RELAY INDICATED THROUGH THE CORRESPONDING WALL-MOUNTED DIMMER INSTALLED ABOVE THE PANELBOARDS.
- INSTALL LED DRIVERS FURNISHED WITH THE X3 LED STRIP LIGHTS ON WALL 6" ABOVE THE CEILING IN AN ACCESSIBLE LOCATION. PROVIDE LOW VOLTAGE WIRING FROM LED DRIVER TO THE X3 LIGHT FIXTURES AS SHOWN.
- INSTALL E2 REMOTE EMERGENCY LIGHT TO BOTTOM OF CANOPY. CONCEAL LOW VOLTAGE WIRING FROM EXIT SIGN TO REMOTE EMERGENCY LIGHT.



LIGHTING FLOOR PLAN
1/4" = 1'-0"

NATIONAL
4635 Trueman Blvd, Suite 250
Hilliard, Ohio 43026
Phone: (614) 751-9610
Fax: (614) 552-5240
Contact: DENNIS ALT
(614) 595-0799
DALT@nationalengineering.com

FOR CONSTRUCTION

CHIPOTLE MEXICAN GRILL, INC.
CHIPOTLE MEXICAN GRILL, INC.
400 BOWL DRIVE
COLUMBUS, OH 43216-2966
TELEPHONE: 614.288.2800
INTERNET: WWW.CHIPOTLE.COM

STORE NO.: 5498
TAMPA STADIUM / FL
2708 W DR. MARTIN LUTHER KING JR.
BLVD.
TAMPA, FL 33607

Revised:
11/09/2024 LL REVIEW
11/07/2024 ISSUE FOR PERMIT
03/06/2025 ISSUE FOR PERMIT

Drawn: DAA
Checked: DAA

Project No:
2401185

Comments:

ELECTRICAL LIGHTING PLAN

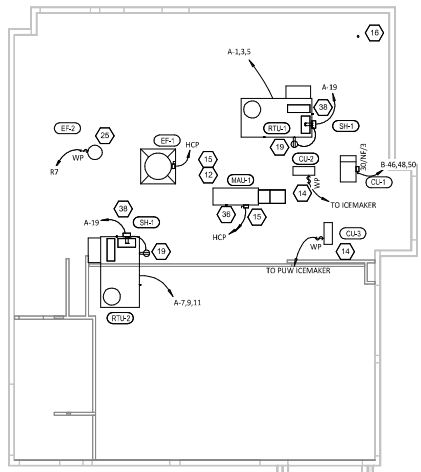
E100

ELECTRICAL POWER PLAN NOTES

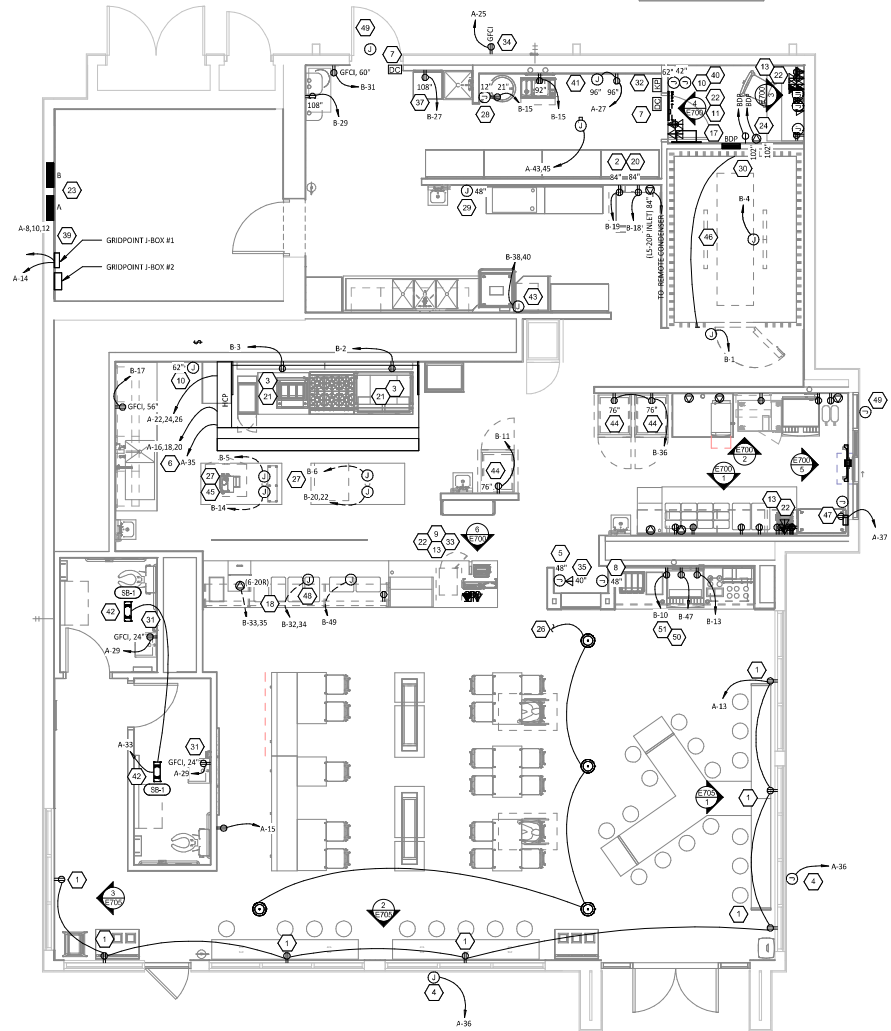
- 1 SHOW ROOM WINDOW RECEPTACLE. COORDINATE EXACT RECEPTACLE MOUNTING HEIGHT IN THE FIELD. LOCATION SHALL BE IN THE DRYPWALL IMMEDIATELY ABOVE THE MAIN STORE-FRONT WINDOW AND AS SHOWN IN THE DINING ROOM ELECTRICAL SCHEDULES ON SHEET 1700.
- 2 ICE MACHINE ELECTRICAL TIE-IN. COORDINATE EXACT LOCATION WITH EQUIPMENT INSTALLER PRIOR TO ROUGH-IN. PROVIDE 15-20P FLANGED INLET WIRED TO THE REMOTE CONDENSER. PROVIDE 4# COBDS, ONE WITH 5-20P END AND ONE WITH 15-20P END. PROVIDE ICE MAKER TO RECEPTACLE AND FLANGED INLET.
- 3 CONNECT RECEPTACLES SERVING EQUIPMENT BELOW THE KITCHEN HOOD TO THE CIRCUITS SHOWN THROUGH THE CONTACTOR INTEGRAL TO THE HOOD CONTROL PANEL. INTEGRAL CONTACTOR SHALL BE INTERLOCKED TO HOOD FIRE PROTECTION SYSTEM SO THAT RECEPTACLES ARE DE-ENERGIZED UPON ACTIVATION OF HOOD FIRE PROTECTION SYSTEM.
- 4 JUNCTION BOX FOR EXTERIOR SIGN LIGHTING. COORDINATE EXACT LOCATION WITH CHIPOTLE'S CONSTRUCTION MANAGER AND THE SIGN INSTALLER PRIOR TO ROUGH-IN. CONNECT TO CIRCUIT SHOWN THROUGH THE EXTERIOR LIGHTING CONTACTOR PANEL AS SHOWN IN DETAIL 6/1710.
- 5 PROVIDE A SINGLE GANG VERTICAL JUNCTION BOX FOR THE KITCHEN EXHAUST SUPPRESSION SYSTEM PULL STATION. PROVIDE A 1/2" CONDUIT FROM THE J-BOX TO 8" ABOVE THE CEILING AND TERMINATE WITH A CONDUIT BUSHING. COORDINATE EXACT LOCATION WITH THE KITCHEN EXHAUST SUPPRESSION SYSTEM INSTALLER AND THE FIRE MARSHALL PRIOR TO ROUGH-IN.
- 6 HOOD CONTROL PANEL AND KITCHEN EXHAUST SUPPRESSION SYSTEM CABINET SHALL BE LOCATED WITHIN THE INTERGRAL HOOD UTILITY CABINET. PROVIDE FINAL ELECTRICAL CONNECTIONS PER THE MANUFACTURER'S INSTALLATION INSTRUCTIONS NECESSARY FOR A COMPLETE AND OPERATIONAL SYSTEM.
- 7 PROVIDE A RECESSED SINGLE-GANG J-BOX ABOVE DOOR AND 3" IN FROM LATCH SIDE OF DOOR FOR THE INSTALLATION OF THE SECURITY SYSTEM DOOR CONTACT WITH A 1/2" CONDUIT TO ABOVE THE LAY-IN CEILING. TERMINATE CONDUIT WITH A CONDUIT BUSHING.
- 8 PROVIDE AN EMPTY SINGLE GANG J-BOX FOR VOLUME CONTROLS. INSTALL 1/62 SPEAKER WIRE FURNISHED BY MSS FROM THE J-BOX TO THE AMPLIFIER IN THE OFFICE WITH 3 FEET OF SLACK AT EACH END.
- 9 COORDINATE DATA/POWER RECEPTACLE MOUNTING REQUIREMENTS WITH THE CASE WORK INSTALLER PRIOR TO ROUGH-IN.
- 10 PROVIDE ROUGH-IN FOR LAUNCHPORT AS NOTED. LAUNCHPORT WILL BE FURNISHED AND INSTALLED BY CHIPOTLE WITH THE WALLSTATION AT 62" AFF. PROVIDE A 4" X 2-1/8" DEEP OCTAGON J-BOX WITH 1-1/2" EXTENSION RING AT 62" AFF FOR THE WALLSTATION. INSTALL WITH A 1" CONDUIT WITH PULL STRING FROM THE J-BOX TO ABOVE THE OFFICE CEILING.
- 11 PROVIDE (2) EMPTY 2" CONDUITS WITH PULL STRINGS FROM THE BASE BUILDING'S TELEPHONE AND DATA SERVICE ENTRANCE LOCATIONS TO THE SPACE ABOVE THE OFFICE CEILING. TERMINATE WITH CONDUIT BUSHING.
- 12 PROVIDE A SUITABLE LENGTH OF LIQUID-TIGHT CONDUIT TO THE EXHAUST FAN EF-1 TO ALLOW THE EXHAUST FAN TO HINGE COMPLETELY OPEN WHEN THE WIRING SYSTEM IS INSTALLED.
- 13 AFTER THE FAX LINE, POS, AND OFFICE EQUIPMENT IS INSTALLED PROVIDE CHILDPROOF RECEPTACLE COVERS ON UNUSED ICE RECEPTACLES AT THE FAX LINE, POS, AND OFFICE.
- 14 PROVIDE ONE PHASE, ONE NEUTRAL, AND ONE GROUND CONDUCTOR FROM THE ICE MAKER TO THE REMOTE CONDENSING UNIT.
- 15 UNIT SHALL HAVE AN INTEGRAL NON-FUSED DISCONNECT SWITCH.
- 16 PROVIDE 3" CONDUIT (EMT, IMC, OR RMC) THROUGH ROOF. TERMINATE WITH WEATHERHEAD EVEN WITH TOP OF PARAPET FOR FUTURE CELL BOOSTER. SECURE CONDUIT TO STRUCTURE TO SUPPORT FUTURE ANTENNA INSTALLATION. PROVIDE 3/4" X 2" X 10" 16-HOLE GROUNDING BUSBAR (BUNBDF B8B14210A OR EQUIV) MOUNTED TO CONDUIT ABOVE ROOF FOR FUTURE CONNECTION OF LIGHTNING ARRESTORS. PROVIDE #2 CU GROUND FROM BUSBAR TO MAIN ELECTRODE GROUNDING CONDUCTOR.
- 17 INSTALL THE BYPASS DISTRIBUTION PANEL (BDP) FURNISHED BY THE TENANT. INSTALL PER THE MANUFACTURER'S INSTALLATION INSTRUCTIONS AND DETAIL 5/7110.
- 18 ROUGH-INS TO SERVE LINE AND POS EQUIPMENT ARE UNDERGROUND. COORDINATE ROUGH-IN REQUIREMENTS AND LOCATIONS WITH EQUIPMENT MANUFACTURER PRIOR TO ROUGH-IN.
- 19 ROOFTOP UNIT SHALL HAVE AN INTEGRAL UNIT-MOUNTED GFCI RECEPTACLE. PROVIDE CONNECTION TO CIRCUIT SHOWN.
- 20 ICE MAKER RECEPTACLES SHALL BE CONCEALED BEHIND THE ICE MAKER. COORDINATE LOCATION WITH ACTUAL WIDTH OF ICE MAKER.
- 21 PROVIDE VERTICAL METAL CASE WEATHERPROOF WHILE IN USE OUTLET COVER ON RECEPTACLES AT COOK LINE. COVER SHALL BE INTERMATIC WIPEDOWN FOR SINGLE GANG BOXES AND WIPEDOWN FOR DOUBLE GANG BOXES. NO SUBSTITUTIONS SHALL BE ACCEPTED.
- 22 LABEL BATTERY-PROTECTED RECEPTACLES "BATTERY-PROTECTED: DISCONNECT AT PANEL BDP".
- 23 LABEL MAIN DISCONNECT SWITCH AND PANEL A "WARNING: BATTERY-PROTECTED RECEPTACLES IN USE. DISCONNECT AT PANEL BDP".
- 24 PROVIDE A NEMA 5-20P FLANGED INLET (LEVITON MODEL #15378-C) AND A SINGLE NEMA 5-20R RECEPTACLE IN OFFICE FOR CONNECTION TO A CENTRAL UPS SYSTEM. CONNECT THE FLANGED INLET AND THE SINGLE RECEPTACLE TO THE TERMINAL BLOCKS IN THE BDP PER THE MANUFACTURER'S INSTRUCTIONS. PROVIDE FINAL CONNECTION FROM FLANGED INLET TO THE OUTPUT OF THE UPS USING A 2-1/2" LONG 20A EXTENSION CORD. PULL THE UPS INTO THE SINGLE RECEPTACLE.
- 25 CONNECT RESTROOM EXHAUST FAN TO CIRCUIT SHOWN THROUGH THE LIGHTING CONTROL PANEL (LCP).
- 26 INSTALL 1/62 SPEAKER WIRE FURNISHED BY MSS. INSTALL SPEAKER WIRE BETWEEN SPEAKERS IN THE DINING ROOM AS SHOWN TO THE VOLUME CONTROL IN THE KITCHEN WITH 3 FEET OF SLACK AT EACH END. SEE ARCHITECTURAL PLANS FOR SPEAKER LOCATIONS. ADJUST EACH SPEAKER 70% TAP SETTING TO BE 15 WATTS.

ELECTRICAL POWER PLAN NOTES

- 27 PROVIDE POWER CONNECTIONS TO ISLAND PREP TABLE PER DETAIL 2/7110. PROVIDE GFCI DUPLEX RECEPTACLES IN THREE J-BOXES IN TEGRAL TO PREP TABLES (FOR UNDERCOUNTER REFRIGERATOR, HOT HOLDING CABINET, AND GENERAL RECEPTACLES).
- 28 PROVIDE GFCI RECEPTACLE AND J-BOX AND INSTALL CO2 ALARM FURNISHED BY COZAS AS SHOWN IN DETAIL 4/7110.
- 29 PROVIDE J-BOX AND INSTALL CO2 ALARM REMOTE DISPLAY UNIT FURNISHED BY COZAS AS SHOWN IN DETAIL 4/7110.
- 30 INSTALL WALK-IN COOLER EXTERNAL READOUT THERMOMETER REMOTE PROBE ON WALL OPPOSITE FROM DOOR AS SHOWN. ROUTE TEMPERATURE PROBE WIRE ABOVE WALK-IN COOLER CEILING PANELS, SEAL PROBE PENETRATION THROUGH THE CEILING PANELS, AND SECURE VERTICAL PROBE WIRE TIGHT TO WALLS. NO EXCESS PROBE WIRE SHALL BE WITHIN THE WALK-IN COOLER.
- 31 PROVIDE RECEPTACLE FOR RESTROOM HAND SINK FAUCET AS SHOWN IN DETAIL 14/7100.
- 32 PROVIDE A RECESSED J-BOX AT 56" AFF FOR THE INSTALLATION OF THE SECURITY SYSTEM KEYPAD WITH A 1/2" CONDUIT TO ABOVE THE LAY-IN CEILING. TERMINATE CONDUIT WITH A CONDUIT BUSHING.
- 33 PROVIDE 1" CONDUITS FROM LOW-VOLTAGE J-BOXES AT POS COUNTER CONCEALED WITHIN THE SERVE LINE WIRING CHASE TO THE WALL, THEN CONCEALED WITHIN THE WALL AND ABOVE THE CEILING TO ABOVE THE OFFICE CEILING.
- 34 PROVIDE A DUPLEX GFCI RECEPTACLE WITH WEATHERPROOF WHILE IN USE OUTLET COVER FOR IRRIGATION CONTROLLER.
- 35 PROVIDE A HORIZONTAL SINGLE-GANG J-BOX FOR DATA JACK AS SHOWN FOR KRONOS TIME CLOCK.
- 36 PROVIDE A TWO-CONDUCTOR LOW VOLTAGE WIRE IN 3/4" C. AND (4) #12, #12 N, #12 G, IN 1" C. FROM MAU-1 TO THE HOOD CONTROL PANEL PER THE MANUFACTURER'S INSTALLATION INSTRUCTIONS.
- 37 LABEL RECEPTACLE "V. WISSET TRAP".
- 38 INSTALL TRANSFORMER FURNISHED BY TLV WITH THE REME HALO AIR PURIFIER IN THE JUNCTION BOX ON THE EXTERIOR OF THE RTU PER DETAIL 6/7100. CONNECT LINE SIDE OF THE TRANSFORMER TO THE RTU SERVICE RECEPTACLE CIRCUIT SO THAT REME HALO RUNS CONTINUOUSLY. CONNECT THE LOW VOLTAGE SIDE OF THE TRANSFORMER TO THE REME HALO USING THE INCLUDED BARREL PLUG.
- 39 PROVIDE (2) 10"X10"X4" JUNCTION BOXES (J-BOX #1/J-BOX #2) ON THE WALL ABOVE PANELBOARDS 6" BELOW THE LAY-IN CEILING AND MOUNTED ADJACENT TO EACH. PROVIDE CONDUITS AND WIRING SHOWN IN DETAIL 6/7100. TEES SHALL PROVIDE GRIDPOINT 1 PHASE METER AND TRANSFORMER WITHIN J-BOX #1 AND GRIDPOINT IOM/HUB WITHIN J-BOX #2. SEE GRIDPOINT INSTALLATION SHEET FOR DETAILS.
- 40 PROVIDE HORIZONTAL SINGLE-GANG J-BOX BELOW FUTURE GRIDPOINT CONTROLLER LOCATION. PROVIDE CONDUITS AND WIRING AS SHOWN IN DETAIL 6/7100.
- 41 INSTALL WIRED DOOR BUZZER AT 96" AFF. SEE ARCHITECTURAL DOOR EQUIPMENT FOR EQUIPMENT INFORMATION. CONNECT TO CIRCUIT SHOWN THROUGH THE TRANSFORMER FURNISHED WITH THE DOOR BUZZER. PROVIDE WIRING TO A BUTTON ADJACENT TO THE SERVICE DOOR AND CONNECT PER THE MANUFACTURER'S INSTALLATION INSTRUCTIONS.
- 42 CONNECT BATHROOM SANITIZER TO CIRCUIT SHOWN SO THAT IT IS ENERGIZED AT ALL TIMES.
- 43 PROVIDE POWER AND LOW VOLTAGE CONNECTIONS TO DISH SANITIZING MACHINE PER DETAIL 7/7120. CONNECT THE RETURN DISH WIPER TO THE DISH MACHINE USING THE INCLUDED WIRING HARNESS PER THE MANUFACTURER'S INSTALLATION INSTRUCTIONS.
- 44 PROVIDE RECEPTACLE FOR 2-DOOR AND/OR 1-DOOR REFRIGERATOR WITH GROUND PINS TOWARDS THE BOTTOM OF THE RECEPTACLE.
- 45 PROVIDE ISLAND PREP TABLE FOOD WARMER RECEPTACLE WITH GROUND PIN TOWARDS THE BOTTOM OF THE RECEPTACLE.
- 46 SEAL INTERIOR AND EXTERIOR OF CONDUITS THAT PASS THROUGH THE WALK-IN COOLER ENVELOPE PER THE NEC.
- 47 INSTALL VEHICLE DETECTOR SYSTEM FURNISHED BY TLS SURFACE MOUNTED ON WALL IN ACCESSIBLE LOCATION ABOVE CEILING AND CONNECT TO STRÖBECHIME AND DETECTOR LOOP PER THE MANUFACTURER'S INSTALLATION INSTRUCTIONS. MAKE FINAL ADJUSTMENTS TO LOOP SENSITIVITY PER THE MANUFACTURER'S INSTRUCTIONS. ONCE ALL COMPONENTS ARE INSTALLED AND OPERATIONAL THE CHIME/STROBE LIGHT SHOULD STAY ILLUMINATED AND THERE SHOULD BE A SINGLE CHIME WHEN A VEHICLE DRIVES OVER OR STOPS ON LOOP.
- 48 IF NEUTRAL CONDUCTOR IS NOT NEEDED FOR SERVE LINE HOT FOOD SERVER TERMINATE NEUTRAL IN JUNCTION BOX.
- 49 PROVIDE 4" SQUARE J-BOX ON EXTERIOR WALL FOR MOUNTING OF EXTERIOR CAMERA. SEE ARCHITECTURAL ELEVATION FOR EXACT HEIGHT AND LOCATION. PROVIDE 3/4" CONDUIT WITH PULLSTRING FROM J-BOX TO ABOVE LAY-IN CEILING AREA IN KITCHEN. J-BOX SHALL NOT BE SURFACE MOUNTED. BASE OF CAMERA SHALL BE MOUNTED FLUSH TO EXTERIOR WALL FINISH.
- 50 PROVIDE CORD AND NEMA 5-20P PLUG FROM UTENSIL COUNTER ICE MAKER, THROUGH UTENSIL COUNTER, TO ICE MAKER RECEPTACLE.
- 51 LABEL UTENSIL COUNTER RECEPTACLES "TRACTOR BEVERAGE", "ICE MAKER/MSB", AND "SODA FOUNTAIN".



POWER ROOF PLAN
1/8" = 1'-0"



POWER FLOOR PLAN
1/4" = 1'-0"

Consultant:

NATIONAL
ENGINEERING

4635 Trueman Blvd. Suite 250
Hilliard, Ohio 43026
Phone: (614) 751-9610
Fax: (614) 552-5240
Contact: DENNIS ALT
(614) 595-9599
DALT@nationalengineering.com

FOR CONSTRUCTION

COPYRIGHT 2025
THIS DRAWING IS AN INSTRUMENT OF SERVICE
AND AS SUCH REMAINS THE PROPERTY OF
CHIPOTLE MEXICAN GRILL, INC. PERMISSION FOR
USE OF THIS DOCUMENT IS LIMITED AND CAN BE
EXTENDED BY WRITTEN AGREEMENT WITH
CHIPOTLE MEXICAN GRILL, INC.



STORE NO.: 5498
TAMPA STADIUM/ FL
2708 W DR. MARTIN LUTHER KING JR.
BLVD.
TAMPA, FL 33607

Issue Record	11/09/2024	LL REVIEW
11/07/2024	ISSUE FOR PERMIT	
03/06/2025	ISSUE FOR PERMIT	

Revisions:

Drawn: Checkb

DAA DAA

Project No:
2401185

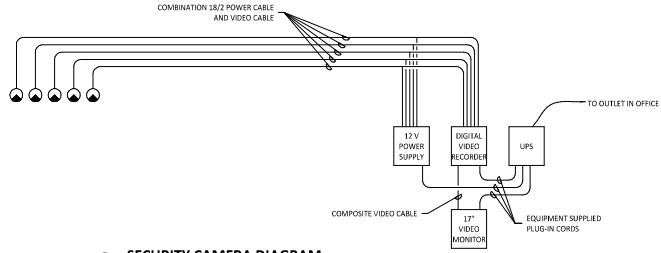
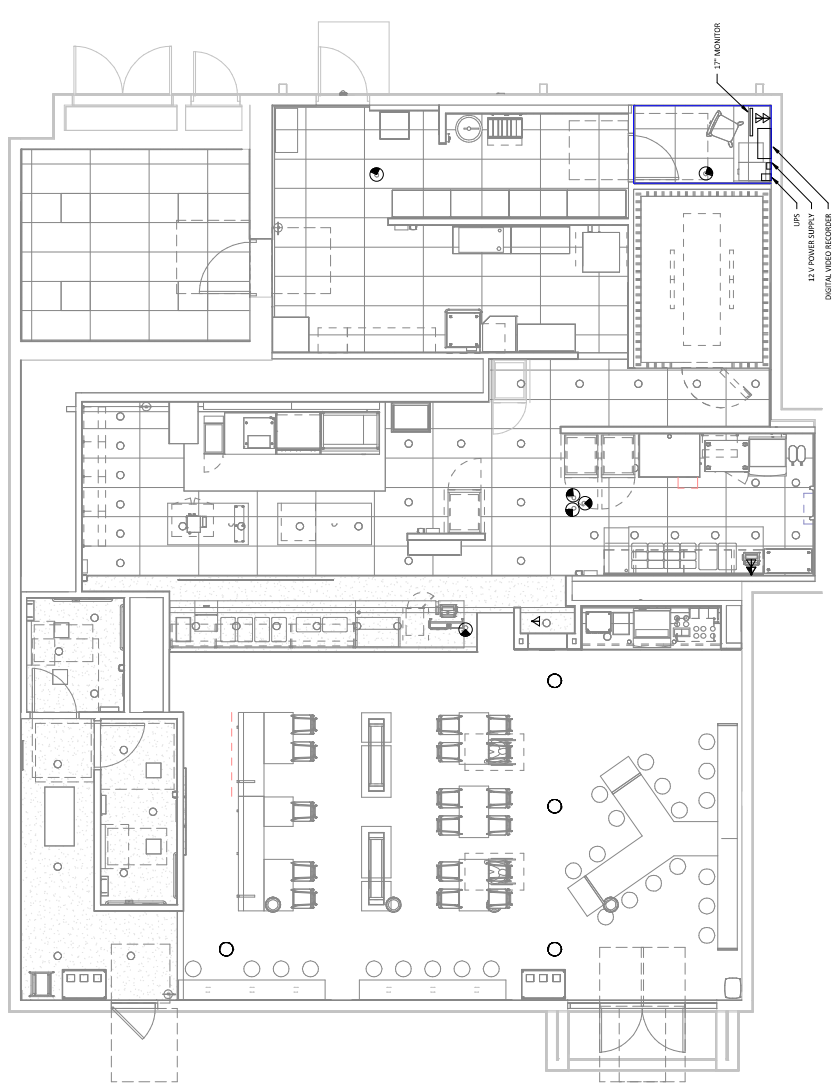
Comments:

ELECTRICAL POWER PLAN

E110

ELECTRICAL SECURITY CAMERA SYMBOLS

- CONDUIT CONCEALED ABOVE THE CEILING, IN A WALL, OR IN A RACEWAY
- - - CONDUIT CONCEALED BELOW THE SLAB
- A-B HOME-RUN TO PANELBOARD AND CIRCUIT NUMBER SHOWN
- ⊕ PLAN NOTE: SEE PLAN NOTES LISTED ON THE SAME SHEET FOR NOTE MEANING
- ⊘ DISCONNECT SWITCH
- X/1/2 SWITCH RATING
- Y = FUSE SIZE (NF = NON-FUSED)
- Z = NUMBER OF POLES
- ⊙ JUNCTION BOX
- ⊖ ELECTRIC PANELBOARD
- ⊖ GENERAL PURPOSE 1-POLE SWITCH
- M MANUAL STARTER WITH PILOT LIGHT
- ⊖ OCCUPANCY SENSOR ACTIVATED WALL SWITCH (MANUFACTURES, WASTEBIN)
- ⊖ NEMA 5-20R DUPLEX RECEPTACLE
- ⊖ SECURITY CAMERA



SECURITY CAMERA DIAGRAM
1/2" = 1'-0"

SECURITY CAMERA FLOOR PLAN
1/4" = 1'-0"

Consultant:

NATIONAL
 4635 Trueman Blvd, Suite 250
 Hilliard, Ohio 43026
 Phone: (614) 751-9610
 Fax: (614) 552-5240
 Contact: DENNIS ALT
 (614) 595-0599
 DALT@nationalengineering.com

FOR CONSTRUCTION

COPYRIGHT 2025
 THIS DRAWING IS AN INSTRUMENT OF SERVICE
 AND AS SUCH REMAINS THE PROPERTY OF
 CHIPOTLE MEXICAN GRILL, INC. PERMISSION FOR
 USE OF THIS DOCUMENT IS LIMITED AND CAN BE
 EXTENDED ONLY BY WRITTEN AGREEMENT WITH
 CHIPOTLE MEXICAN GRILL, INC.

 CHIPOTLE MEXICAN GRILL, INC.
 40 BOWL DRIVE
 COLUMBUS, OH 43218-2966
 TELEPHONE: 614.218.2960
 INTERNET: WWW.CHIPOTLE.COM

STORE NO.: 5498
 TAMPA STADIUM / FL
 2708 W DR. MARTIN LUTHER KING JR.
 BLVD.
 TAMPA, FL 33607

Issue Record	Issue	Issue Date	Issue Description
11/09/2024	LL REVIEW		
11/07/2024	ISSUE FOR PERMIT		
03/06/2025	ISSUE FOR PERMIT		

Drawn	Checked
DAA	DAA

Project No.
2401185

ELECT. SECURITY
 CAMERA PLAN

E120