

MECHANICAL SYMBOLS LEGEND

	SUPPLY DIFFUSER WITH TYPE, THROW PATTERN, AND CFM.		FLEXIBLE DUCT
	RETURN AIR GRILLE WITH TYPE		MANUAL BALANCING DAMPER
	ROUND CONE DIFFUSER		ROOFTOP UNIT
	RECTANGULAR DUCTWORK		ROOF MOUNTED EXHAUST FAN
	ROUND DUCTWORK		CEILING MOUNTED EXHAUST FAN
	ELBOW WITH TURNING VANES		DUCT MOUNTED SMOKE DETECTOR
	TRANSITION IN DUCTWORK		THERMOSTAT
	TRANSITION IN DUCTWORK		REMOTE SPACE TEMPERATURE SENSOR
	SPIN-IN COLLAR WITH BALANCING DAMPER		MECHANICAL EQUIPMENT DESIGNATION, REFER TO MECHANICAL SCHEDULES.
	MANUAL BALANCING DAMPER		PLAN NOTE DESIGNATION

MOUNT BOTTOM OF EXPOSED ROUND DIFFUSERS AT 15'-0" A.F.F.

INSTALL ALL EXPOSED DUCTWORK AS HIGH AS POSSIBLE, TIGHT TO STRUCTURE.

ALL MECHANICAL SHALL BE IN ACCORDANCE WITH CITY OF AUSTIN MECHANICAL CODES.

EACH SINGLE SYSTEM PROVIDING HEATING OR COOLING AIR IN EXCESS OF 2,000 CFM REQUIRES SMOKE DETECTOR IN THE CIRCULATING AIR STREAM TO SHUT DOWN AIR MOVING EQUIPMENT WHEN SMOKE IS DETECTED. (UMC 1009)

WARNING! TYPE I HOOD & DUCT CLEARANCE

TYPE I HOODS & EXPOSED GREASE DUCTS SERVING THEM SHALL HAVE A MINIMUM 18 INCHES CLEARANCE TO COMBUSTIBLE CONSTRUCTION. THIS CLEARANCE MAY BE REDUCED TO NOT LESS THAN 8 INCHES, PROVIDED COMBUSTIBLE ARE PROTECTED BY ONE-HOUR FIRE RESISTIVE CONSTRUCTION ON THE HOOD SIDE.

NOTE: NONCOMBUSTIBLE MATERIAL FOR REDUCED CLEARANCES TO HOODS OR OTHER SOURCES OF HIGH TEMPERATURE SHALL BE MATERIAL OF WHICH NO PART, INCLUDING FACINGS, WILL IGNITE AND BURN WHEN SUBJECTED TO FIRE.

WARNING! ENCLOSURE CLEARANCE

TYPE I HOODS & GREASE DUCTS PENETRATING A WALL, CEILING OR FLOOR SHALL BE ENCLOSED IN A DUCT ENCLOSURE FROM THE POINT OF PENETRATION. DUCT ENCLOSURES SHALL BE CONSTRUCTED AS REQUIRED FOR SHAFT ENCLOSURE PER UBC SEC. 1706. DUCT ENCLOSURE SHALL BE OF AT LEAST ONE-HOUR FIRE-RESISTIVE BUILDINGS. THE ENCLOSURE SHALL BE SEPARATED FROM THE DUCT BY AT LEAST 3 INCHES AND NOT MORE THAN 13 INCHES AND SHALL SERVE AS A SINGLE GREASE EXHAUST DUCT SYSTEM.

NOTE: NONCOMBUSTIBLE MATERIAL FOR REDUCED CLEARANCES TO HOODS OR OTHER SOURCES OF HIGH TEMPERATURE SHALL BE MATERIAL OF WHICH NO PART, INCLUDING FACINGS, WILL IGNITE AND BURN WHEN SUBJECTED TO FIRE.

01 MECHANICAL FLOOR PLAN
1/4"=1'-0"

REFER TO SHEET M-2 FOR PLAN NOTES SCHEDULES NOT SHOWN ON THIS DRAWING.

LARSON-BINKLEY ASSOCIATES, INC.
8900 State Line, Suite 150, Leawood, Kansas 66206
Phone: (913) 353-9521 Fax: (913) 353-9531

THIS DRAWING IS A SINGLE PART OF AN INTEGRATED SET OF CONSTRUCTION CONTRACT DOCUMENTS. REFER TO THE COMPLETE SET OF CONTRACT DOCUMENTS FOR ALL INFORMATION. CONTRACTORS SHALL BE RESPONSIBLE FOR VERIFYING ALL INFORMATION AND CONDITIONS BEFORE CONSTRUCTION. THE CONTRACTOR SHALL BE RESPONSIBLE FOR OBTAINING ALL NECESSARY PERMITS AND APPROVALS FROM THE LOCAL AUTHORITIES. THE CONTRACTOR SHALL BE RESPONSIBLE FOR OBTAINING ALL NECESSARY PERMITS AND APPROVALS FROM THE LOCAL AUTHORITIES. THE CONTRACTOR SHALL BE RESPONSIBLE FOR OBTAINING ALL NECESSARY PERMITS AND APPROVALS FROM THE LOCAL AUTHORITIES.

Revisions

1	CITY COMMENTS	2-16-98
2	GENERAL REVISIONS	2-19-98

Date: 8/11/97
© COPYRIGHT

S.P.F. CHANG & ASSOCIATES
CHINA BISTRO
AUSTIN, TEXAS

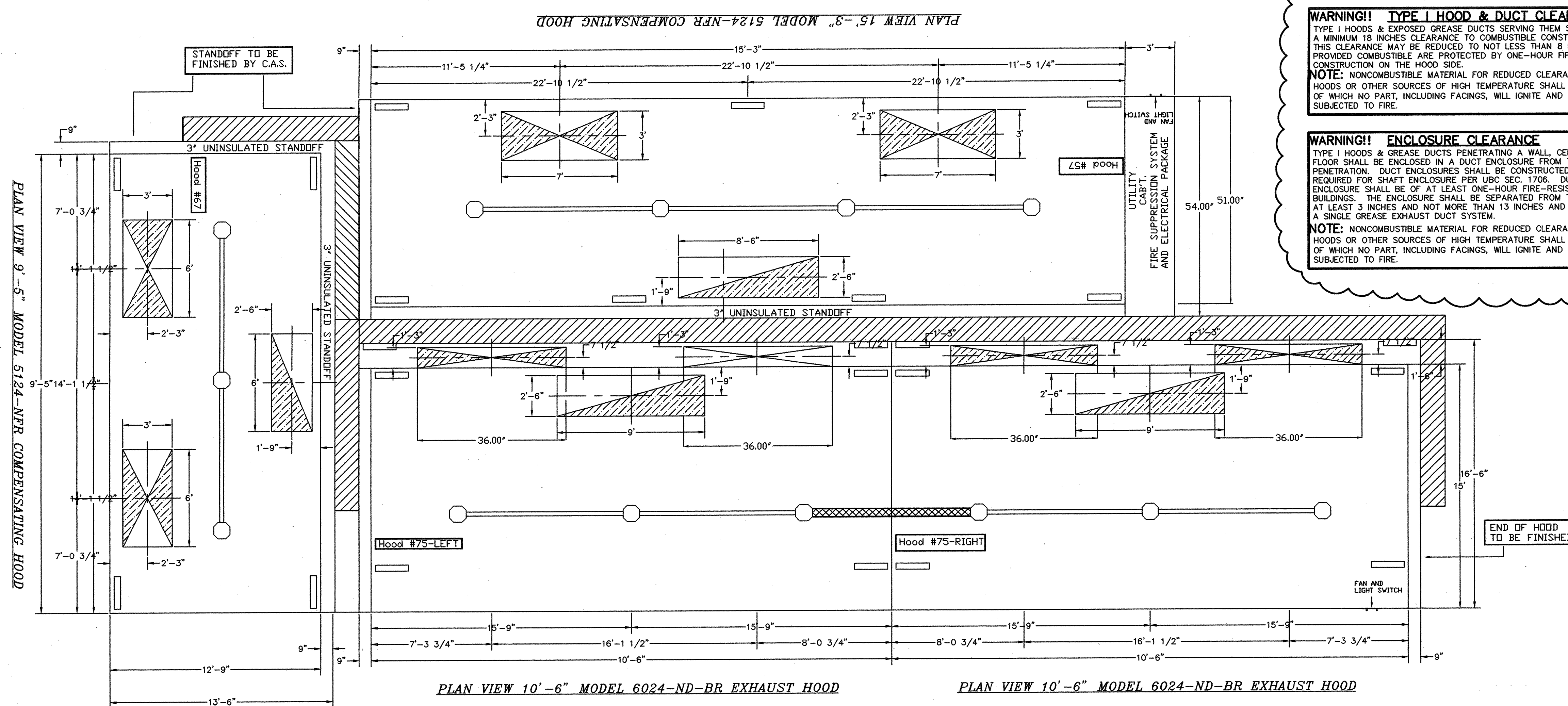
NELSEN ARCHITECTS, INC.
SCOTTSDALE, ARIZONA 85261
7051 E. CAMERBACK ROAD SUITE 100 SCOTTSDALE, ARIZONA 85261
PHONE (602) 949-6800 FAX (602) 949-6801

Revisions

1 CITY COMMENTS
2-16-98

Date:
8/11/97

© COPYRIGHT

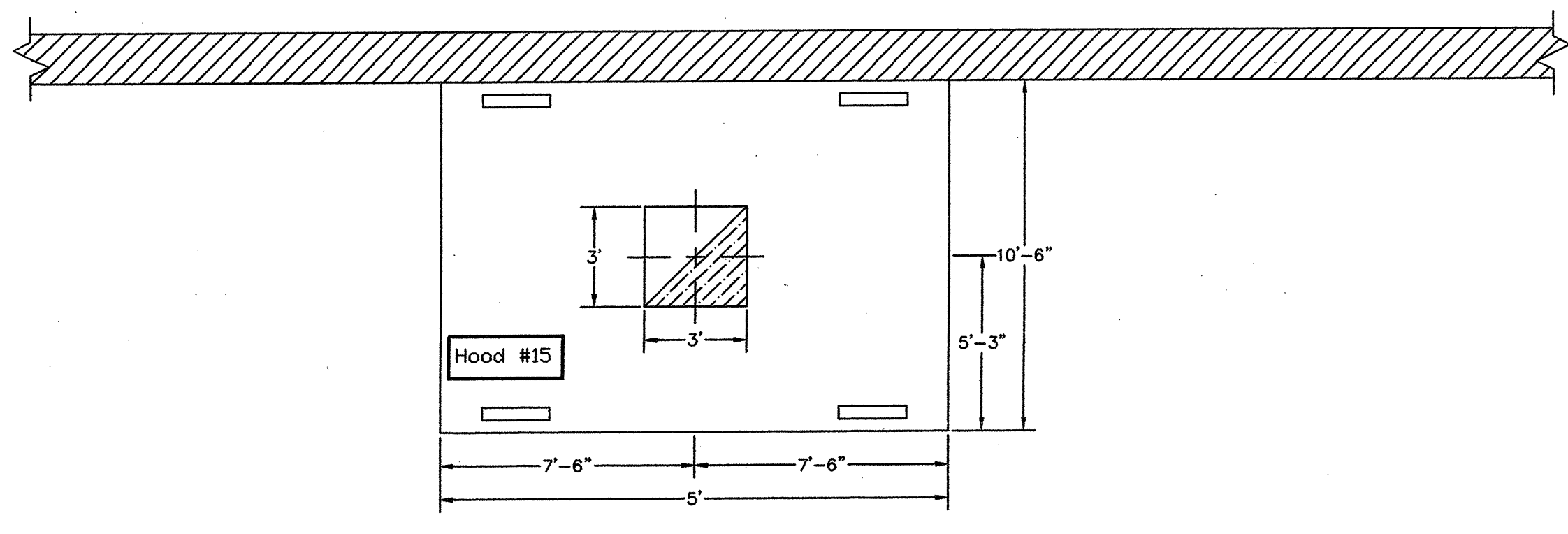


ALL MECHANICAL SHALL BE IN ACCORDANCE WITH CITY OF AUSTIN MECHANICAL CODES.

WARNING!! TYPE I HOOD & DUCT CLEARANCE
TYPE I HOODS & EXPOSED GREASE DUCTS SERVING THEM SHALL HAVE A MINIMUM 18 INCHES CLEARANCE TO COMBUSTIBLE CONSTRUCTION. THIS CLEARANCE MAY BE REDUCED TO NOT LESS THAN 8 INCHES PROVIDED COMBUSTIBLE ARE PROTECTED BY ONE-HOUR FIRE RESISTIVE CONSTRUCTION ON THE HOOD SIDE.
NOTE: NONCOMBUSTIBLE MATERIAL FOR REDUCED CLEARANCES TO HOODS OR OTHER SOURCES OF HIGH TEMPERATURE SHALL BE MATERIAL OF WHICH NO PART, INCLUDING FACINGS, WILL IGNITE AND BURN WHEN SUBJECTED TO FIRE.

WARNING!! ENCLOSURE CLEARANCE
TYPE I HOODS & GREASE DUCTS PENETRATING A WALL, CEILING OR FLOOR SHALL BE ENCLOSED IN A DUCT ENCLOSURE FROM THE POINT OF PENETRATION. DUCT ENCLOSURES SHALL BE CONSTRUCTED AS REQUIRED FOR SHAFT ENCLOSURE PER UBC SEC. 1706. DUCT ENCLOSURE SHALL BE OF AT LEAST ONE-HOUR FIRE-RESISTIVE BUILDING. THE ENCLOSURE SHALL BE SEPARATED FROM THE DUCT BY AT LEAST 3 INCHES AND NOT MORE THAN 13 INCHES AND SHALL SERVE AS A SINGLE GREASE EXHAUST DUCT SYSTEM.
NOTE: NONCOMBUSTIBLE MATERIAL FOR REDUCED CLEARANCES TO HOODS OR OTHER SOURCES OF HIGH TEMPERATURE SHALL BE MATERIAL OF WHICH NO PART, INCLUDING FACINGS, WILL IGNITE AND BURN WHEN SUBJECTED TO FIRE.

THE FOLLOWING IS DONE BY M.C. HOOD #75-LEFT AND 75-RIGHT ARE TO BE SEALED TO THE BACK RETURN SO THE GREASE DOES NOT SEAP UP BETWEEN THE TWO. SEE SECTION VIEW.



PLAN VIEW 5' MODEL 4224-VH1-G VENT HOOD

FOR INFORMATION PLEASE CALL
SOUTHWEST REGIONAL OFFICE
3150 N. ARIZONA AVE #109 CHANDLER, AZ 85224
PHONE: (602) 926-6810, FAX: (602) 926-6811
JOHNNY M. JOHNSON

CAPTIVE-AIRE HOODS ARE BUILT IN COMPLIANCE WITH
NFPA #96
AND ONE OR MORE OF THE FOLLOWING:
NSF
BOCA #93-16
I.C.B.D. #4416
S.B.C.C.I. #8675
U.L. LISTED #MH12106



JOB	P.F. CHANGS CHINA BISTRO
LOCATION	AUSTIN, TX
DATE	9-10-97
DWC #	JMJ
REV.	SCALE 3/4 In = 1 Ft

P.F. CHANGS
 CHINA BISTRO
 AUSTIN, TEXAS

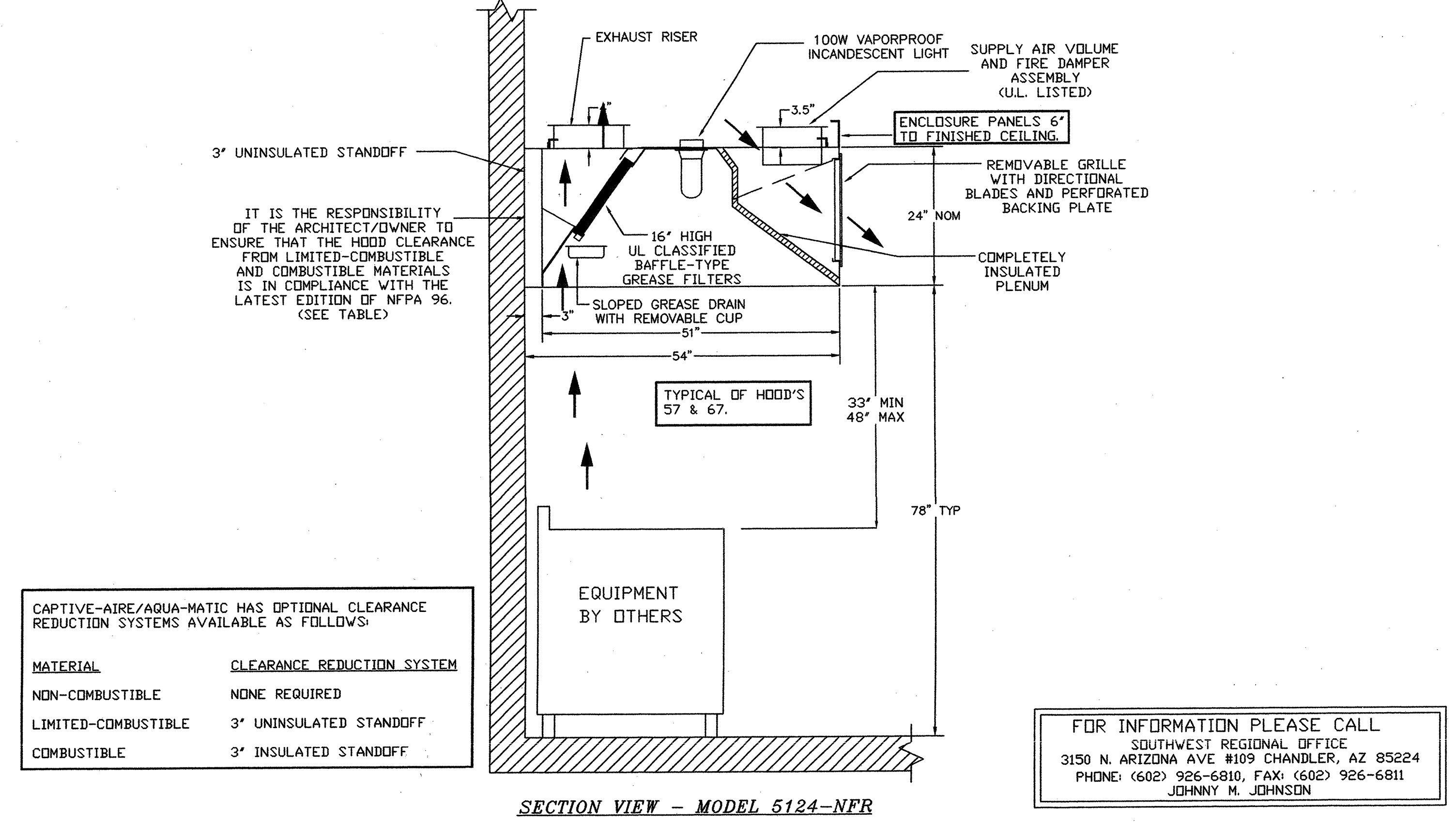
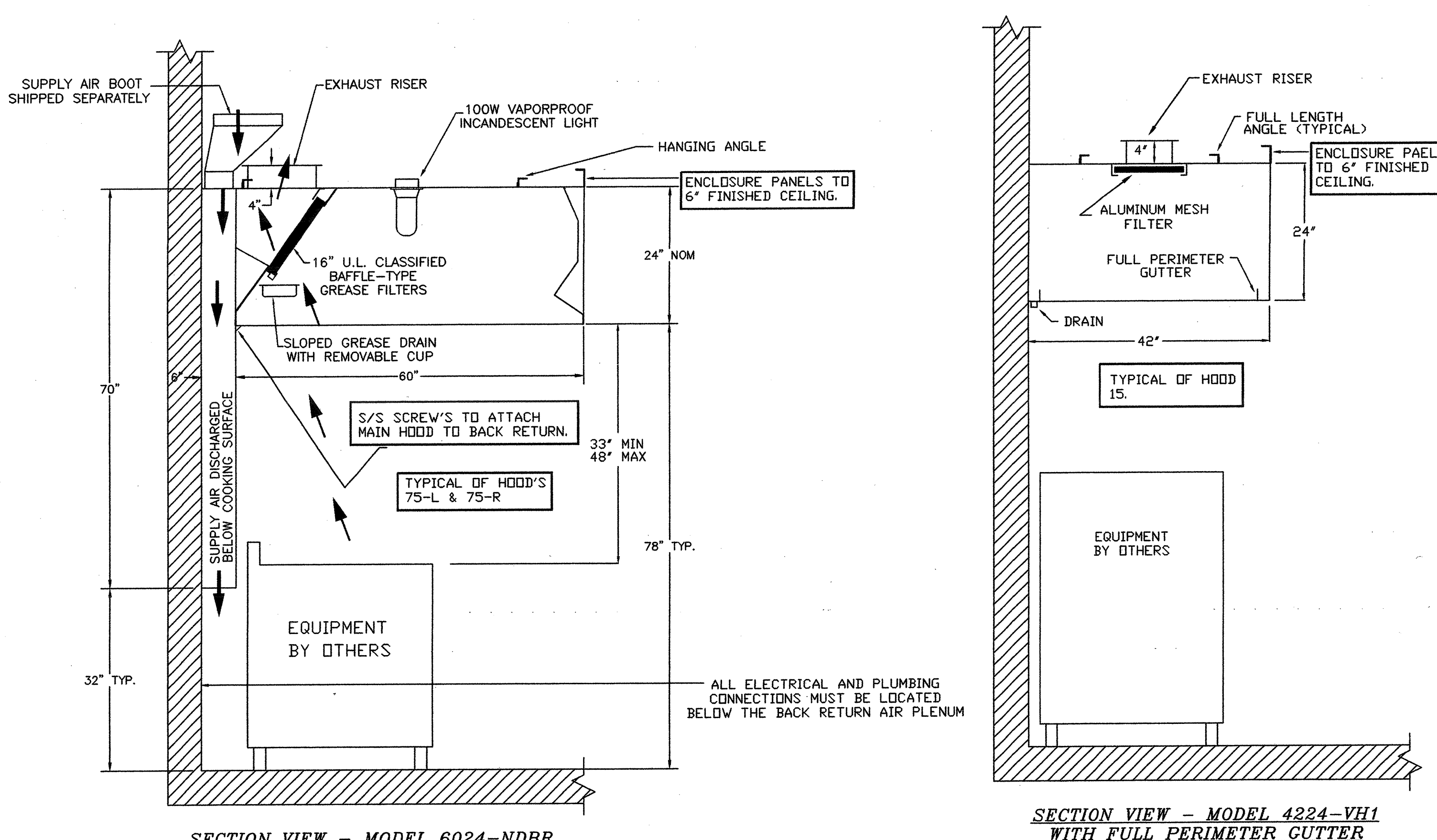
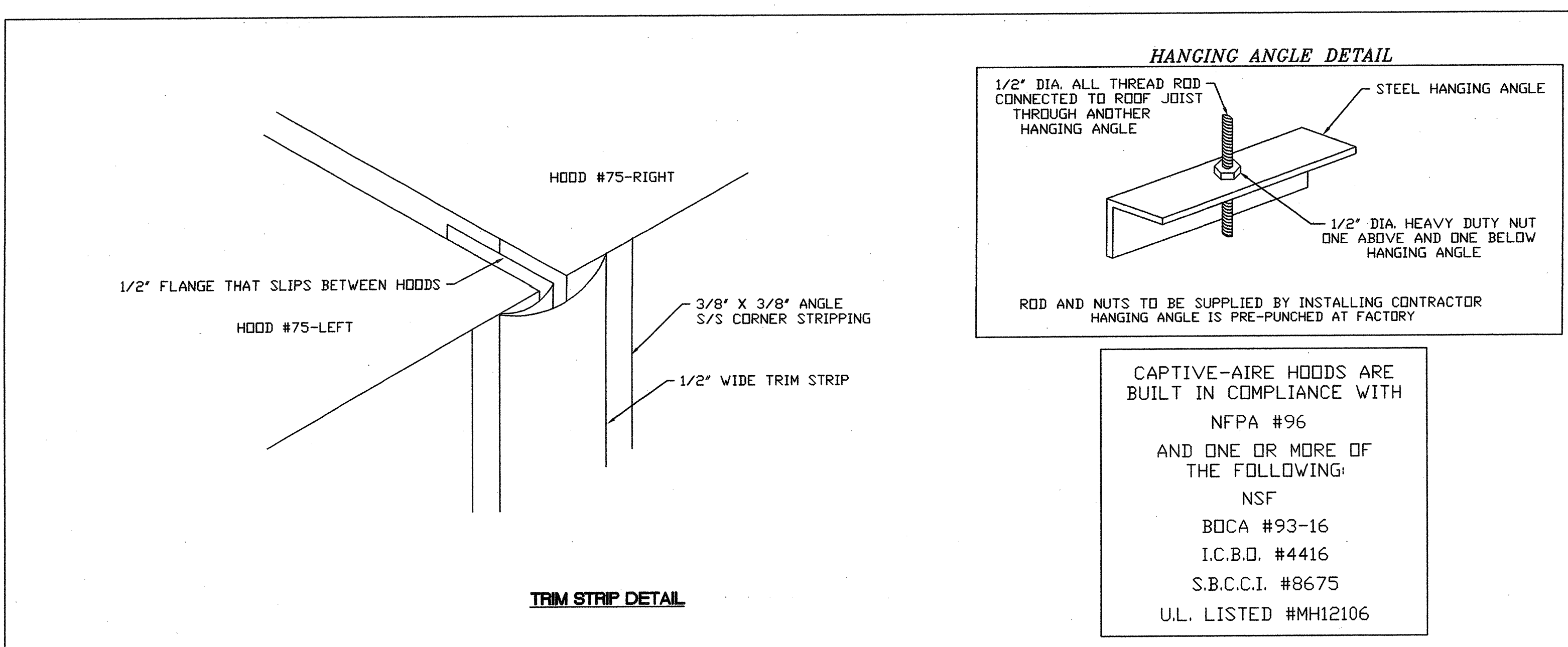
NELSEN ARCHITECTS, INC.
 SCOTTSDALE, ARIZONA 85251
 7031 E. CAMELBACK ROAD SUITE 100
 SCOTTSDALE, ARIZONA 85251
 PHONE (602) 949-6800 FAX (602) 949-6801

Sheet
M-4
Project No:
96039

WARNING!! TYPE I HOOD & DUCT CLEARANCE
TYPE I HOODS & EXPOSED GREASE DUCTS SERVING THEM SHALL HAVE A MINIMUM 18 INCHES CLEARANCE TO COMBUSTIBLE CONSTRUCTION. THIS CLEARANCE MAY BE REDUCED TO NOT LESS THAN 8 INCHES, PROVIDED COMBUSTIBLE ARE PROTECTED BY ONE-HOUR FIRE RESISTIVE CONSTRUCTION ON THE HOOD SIDE.
NOTE: NONCOMBUSTIBLE MATERIAL FOR REDUCED CLEARANCES TO HOODS OR OTHER SOURCES OF HIGH TEMPERATURE SHALL BE MATERIAL OF WHICH NO PART, INCLUDING FACINGS, WILL IGNITE AND BURN WHEN SUBJECTED TO FIRE.

WARNING!! ENCLOSURE CLEARANCE
TYPE I HOODS & GREASE DUCTS PENETRATING A WALL, CEILING OR FLOOR SHALL BE ENCLOSED IN A DUCT ENCLOSURE FROM THE POINT OF PENETRATION. DUCT ENCLOSURES SHALL BE CONSTRUCTED AS REQUIRED FOR SHAFT ENCLOSURE PER UBC SEC. 1706. DUCT ENCLOSURE SHALL BE OF AT LEAST ONE-HOUR FIRE-RESISTIVE BUILDINGS. THE ENCLOSURE SHALL BE SEPARATED FROM THE DUCT BY AT LEAST 3 INCHES AND NOT MORE THAN 13 INCHES AND SHALL SERVE AS A SINGLE GREASE EXHAUST DUCT SYSTEM.
NOTE: NONCOMBUSTIBLE MATERIAL FOR REDUCED CLEARANCES TO HOODS OR OTHER SOURCES OF HIGH TEMPERATURE SHALL BE MATERIAL OF WHICH NO PART, INCLUDING FACINGS, WILL IGNITE AND BURN WHEN SUBJECTED TO FIRE.

ALL MECHANICAL SHALL BE IN ACCORDANCE WITH CITY OF AUSTIN MECHANICAL CODES.



HOOD INFORMATION TABLE

HOOD NO.	MODEL	LENGTH	MAX. COOKING TEMP.	AIR REQUIREMENTS										HOOD CONST.	HOOD CONFIGURATION			
				EXHAUST RISER					SUPPLY RISER						END TO END	BACK TO BACK		
QTY.	SIZE	CFM/ RISER	S.P.	TOTAL EXH. CFM	QTY.	SIZE	CFM/ RISER	S.P.	TOTAL SUP. CFM									
75-L	6024 ND-BR	10' 6"	700 DEG.	1	10	36	4730	0.750	4730	2	5	36	1774	0.250	3548	TYPE 304 SS WHERE EXPOSED	LEFT	FRONT
75-R	6024 ND-BR	10' 6"	700 DEG.	1	10	36	4730	0.750	4730	2	5	36	1774	0.250	3548	TYPE 304 SS WHERE EXPOSED	RIGHT	FRONT
57	5124 NFR	15' 3"	600 DEG.	1	10	34	4800	0.750	4800	2	12	28	1920	0.250	3840	TYPE 304 SS WHERE EXPOSED		
67	5124 NFR	9' 5"	600 DEG.	1	10	24	3000	0.750	3000	2	12	24	1200	0.250	2400	TYPE 304 SS WHERE EXPOSED		
15	4224 VH1-G	5' 0"	0 DEG.	1	12	12	1100	0.500	1100	-	-	-	-	-	-	TYPE 304 SS 100x		

HOOD INFORMATION TABLE

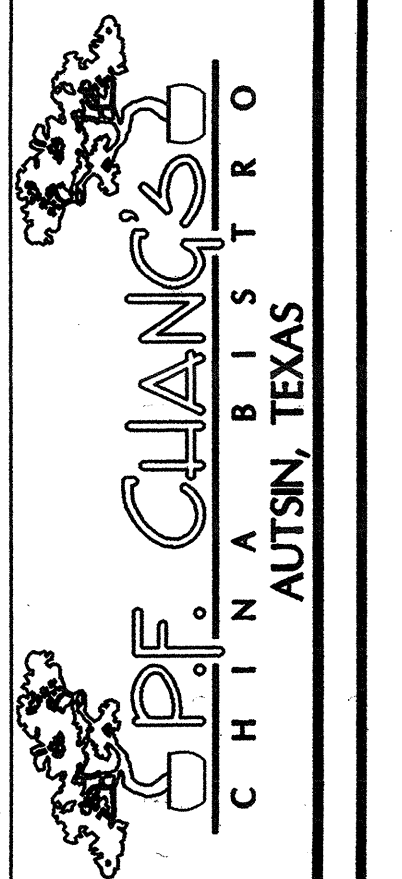
HOOD NO.	FIRE CABINET	FILTERS		LIGHTS		FIRE SYSTEM		ELECTRICAL INFORMATION		HOOD WEIGHT							
		QTY.	HT	LEN	TYPE	QTY.	TYPE	TYPE	SIZE (GALLON)		LOCATION	PRE-WIRE PACKAGE #	LOCATION	# OF SWITCHES	LOCATION		
75-L	NONE	3	16	16	SS	BAF. w/ hand	3	INCAN	-	PYROCHEM	2.4/3.5	WALL MT	32111005	Wall Mt	1 LIGHT SV 1 FAN SV 1 S/W SV 0 OTHER SV	Renote	809 LBS.
75-R	NONE	3	16	16	SS	BAF. w/ hand	3	INCAN	-	PIPED	-	WALL MT	-	-	1 LIGHT SV 1 FAN SV 1 S/W SV 0 OTHER SV	-	809 LBS.
57	LEFT	3	16	16	SS	BAF. w/ hand	4	INCAN	-	PIPED	-	HOOD #0	-	-	1 LIGHT SV 1 FAN SV 1 S/W SV 0 OTHER SV	-	1182 LBS.
67	NONE	2	16	16	SS	BAF. w/ hand	3	INCAN	-	PIPED	-	HOOD #0	-	-	1 LIGHT SV 1 FAN SV 1 S/W SV 0 OTHER SV	-	750 LBS.
15	NONE	1	0			MESH 12X12	0	-	-	-	-	-	-	-	1 FAN SV 1 S/W SV 0 OTHER SV	-	115 LBS.

HOOD ACCESSORIES TABLE

HOOD NO.	BACK RETURN		STAND-OFF			WRAPPER		BACKSPLASH			END PANELS			FINISHED BACK	FINISHED BACK LENGTH		
	WIDTH	LENGTH	BACK WIDTH	LEFT WIDTH	RIGHT WIDTH	HEIGHT	TYPE	LOCATION	HEIGHT	LENGTH	INS	HEIGHT	TOP WIDTH			BOTTOM WIDTH	INS
75-L	6	126	-	-	3	-	-	6.0	SHOP	LEFT FRONT	-	-	LEFT	-	-	-	-
75-R	6	126	-	-	3	-	6.0	SHOP	FRONT RIGHT	-	-	LEFT	-	-	-	-	-
57	-	-	3	-	3	-	6.0	SHOP	LEFT FRONT	-	-	LEFT	-	-	-	-	-
67	-	-	3	-	3	-	6.0	SHOP	LEFT FRONT	-	-	LEFT	-	-	-	-	-
15	-	-	-	-	-	-	6.0	SHOP	LEFT FRONT	-	-	LEFT	-	-	-	-	-



JOB	P.F CHANGS CHINA BISTRO
LOCATION	AUSTIN, TX
DATE	9-10-97
DWG #	
REV	
JOB #	
DRAWN BY	JMJ
SCALE	3/4 In = 1 Ft



NELSEN ARCHITECTS, INC.
SCOTTSDALE, ARIZONA 85251
7031 E. CAMELBACK ROAD SUITE 100 SCOTTSDALE, ARIZONA 85224
PHONE (602) 949-6800 FAX (602) 949-6801