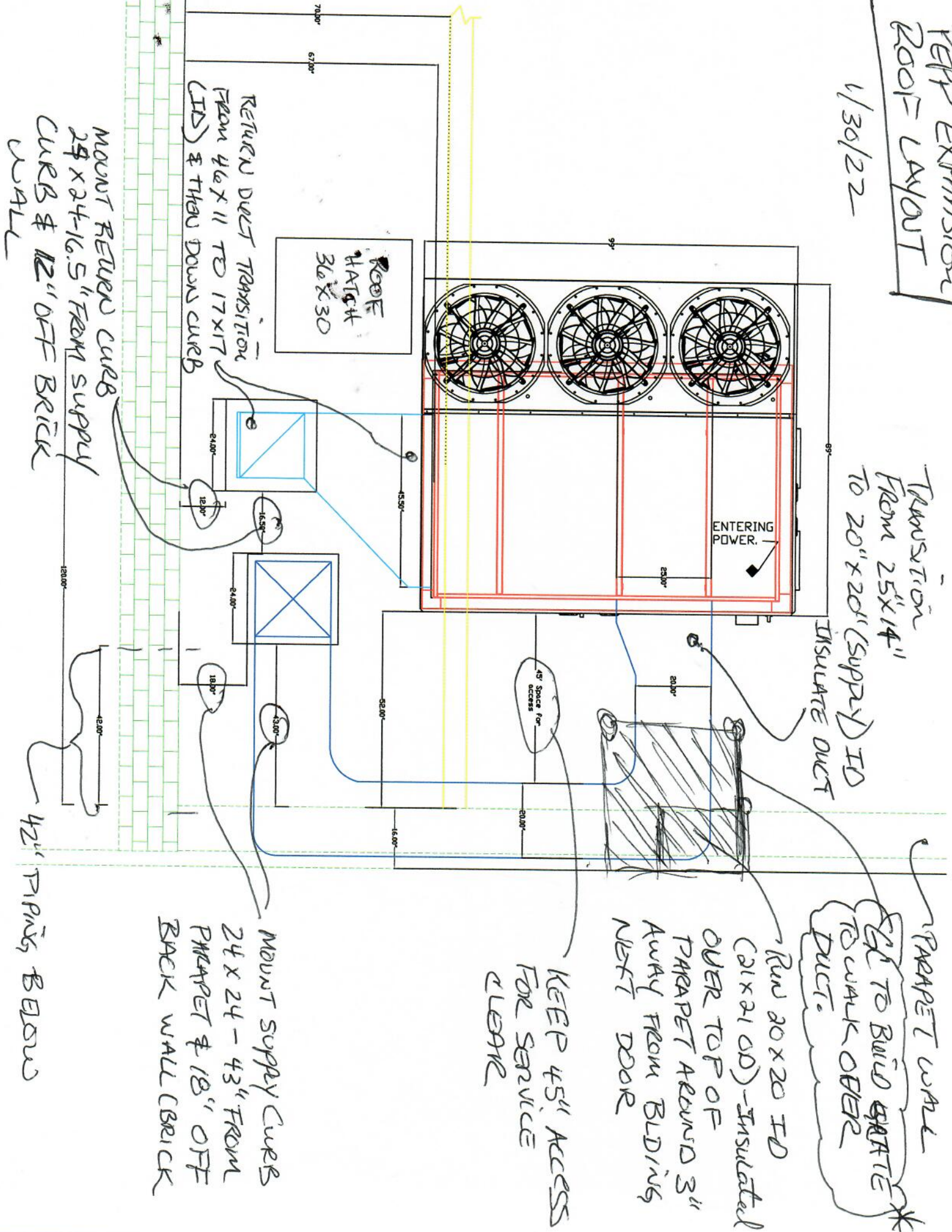


# PEEP EXPANSION ROOF LAYOUT

1/30/22



TRANSITION FROM 25"x14" TO 20"x20" (SUPPLY) I/D

INSULATE DUCT

PARAPET WALL  
GET TO BUILD SEPARATE TO WALK OVER DUCT.

Run 80x20 I/D (21x21 O/D) - Insulated OVER TOP OF PARAPET AROUND 3" AWAY FROM BLDG'S NEXT DOOR

KEEP 45" ACCESS FOR SERVICE CLEAR

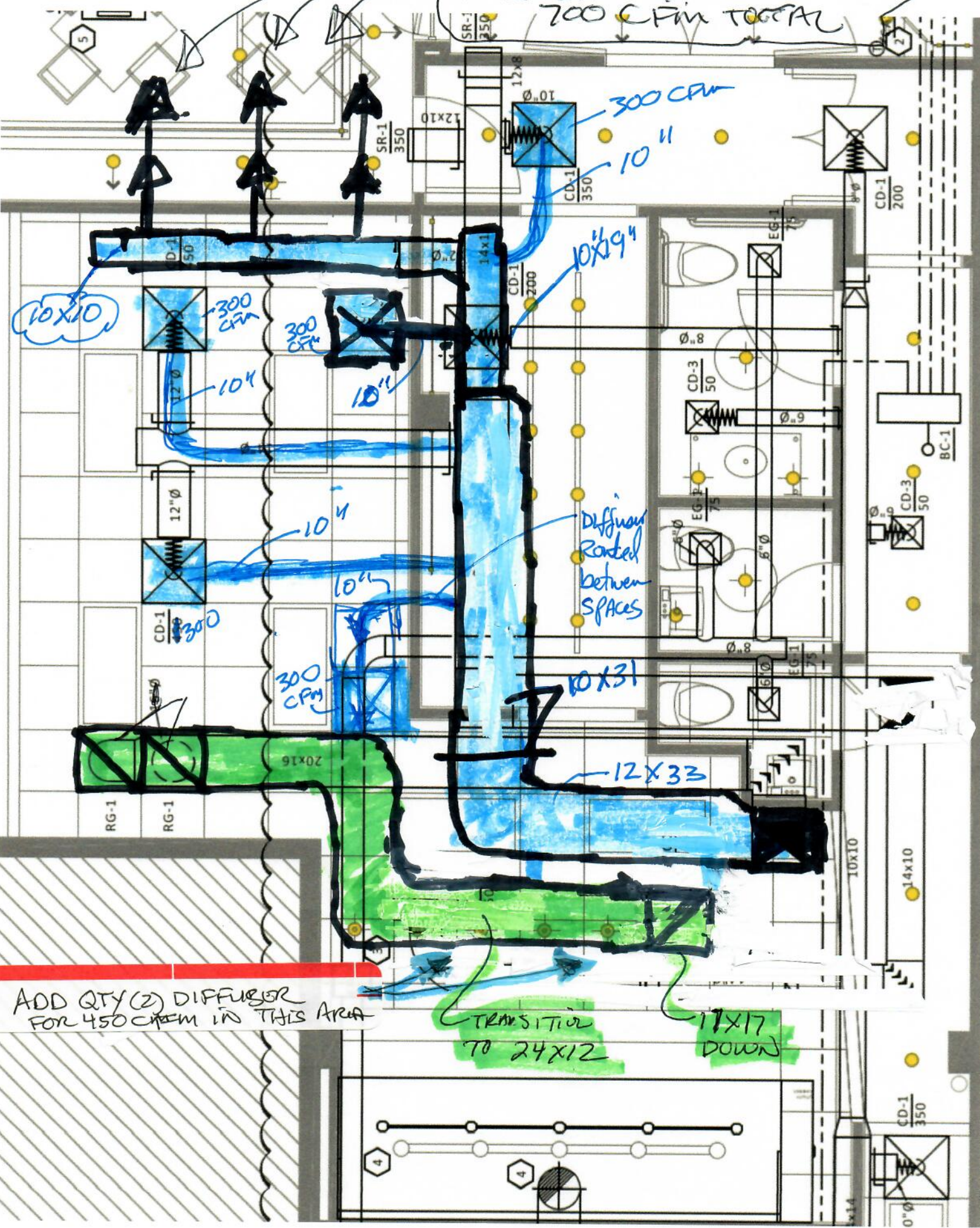
MOUNT SUPPLY CURB 24x24 - 43" FROM PARAPET & 18" OFF BACK WALL (BRICK

MOUNT RETURN CURB 29x24-16.5" FROM SUPPLY CURB & 12" OFF BRICK WALL

42" PIPES, BELOW



QTY (3) 8" DIA DUCT INTO DINING TO PROVIDE 700 CFM TOTAL



ADD QTY (2) DIFFUSER FOR 450 CFM IN THIS AREA

TRANSITION TO 24x12

17x17 DOWN