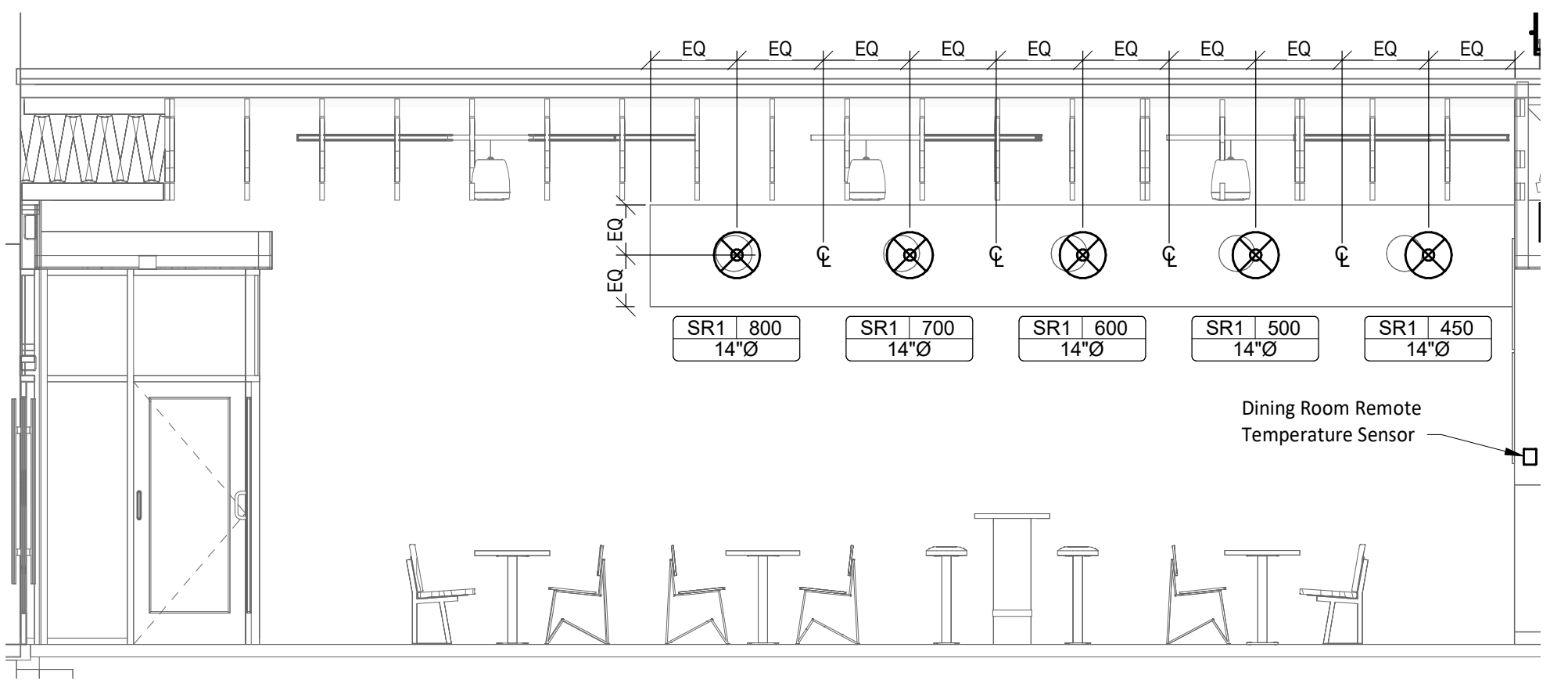
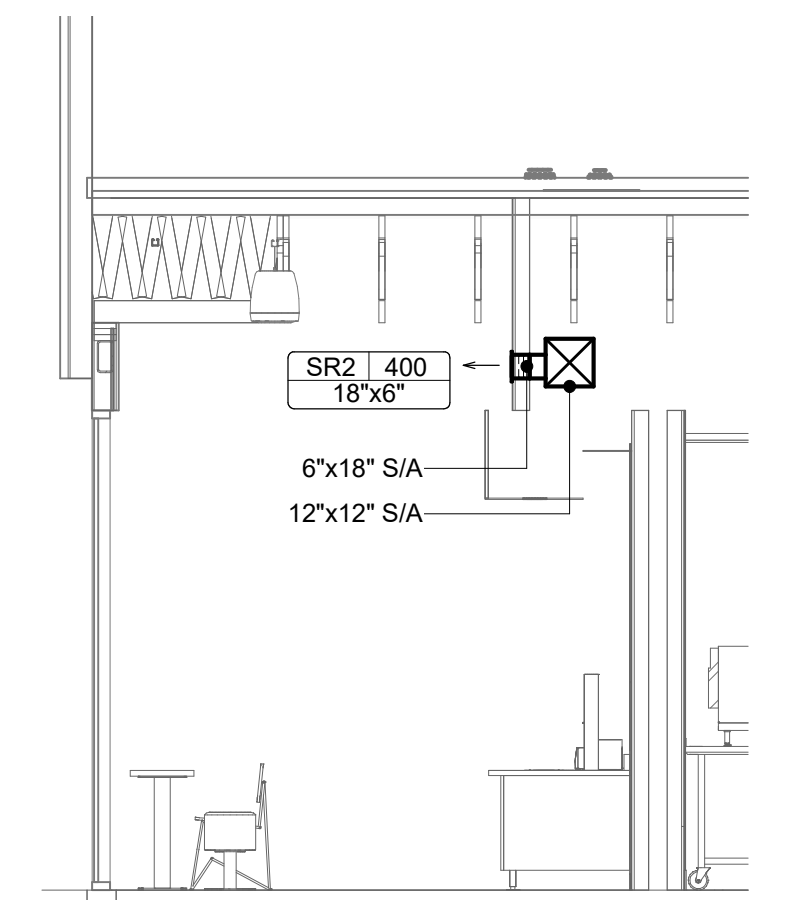


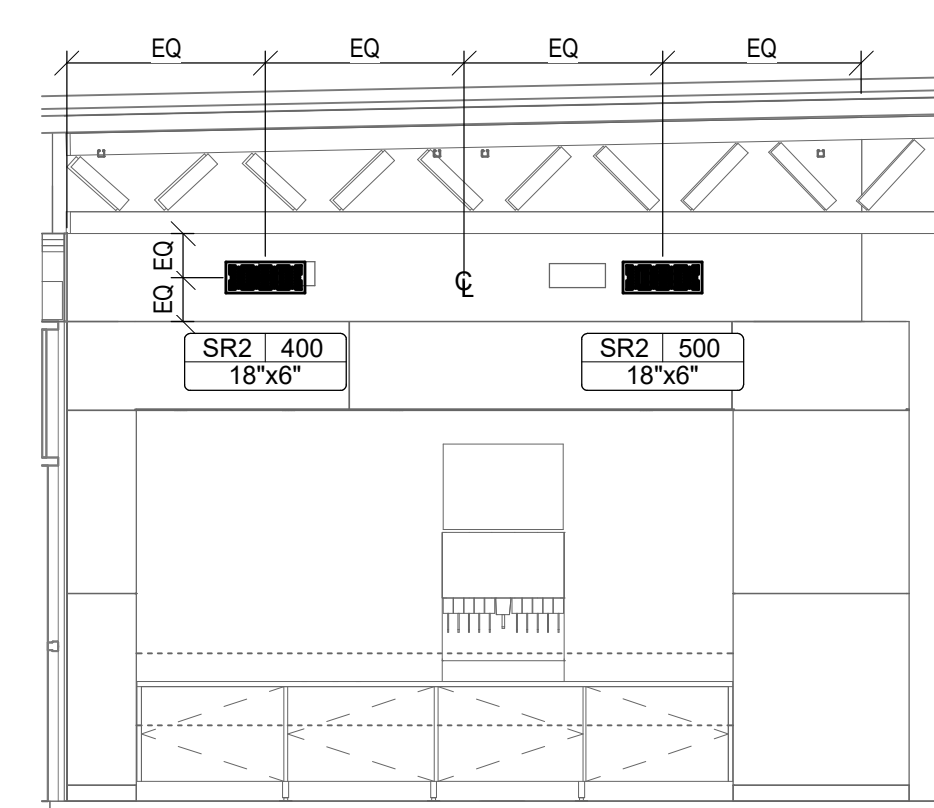
6 HVAC Dining Room Return Section
1/4" = 1'-0"



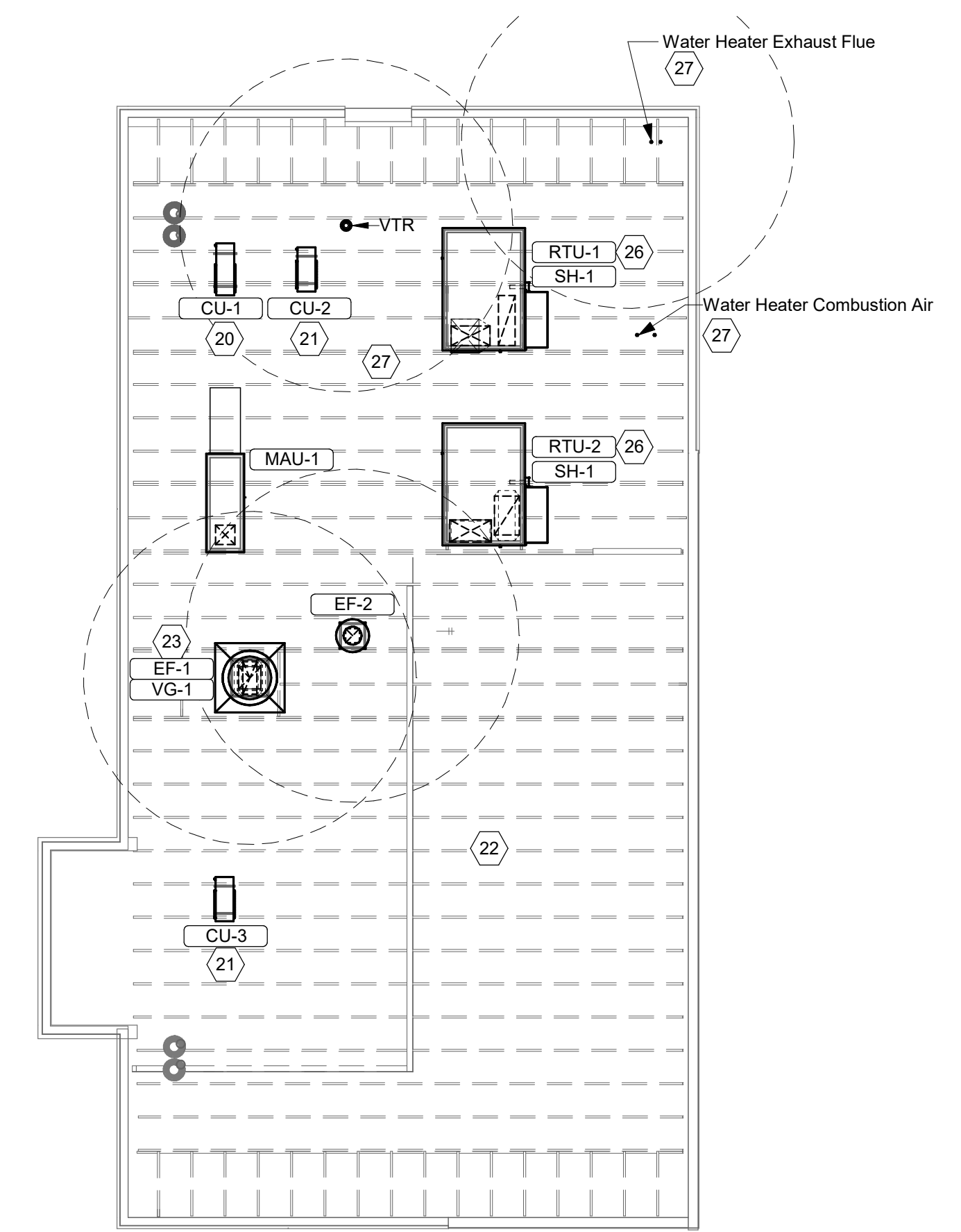
4 HVAC Dining Room Section
1/4" = 1'-0"



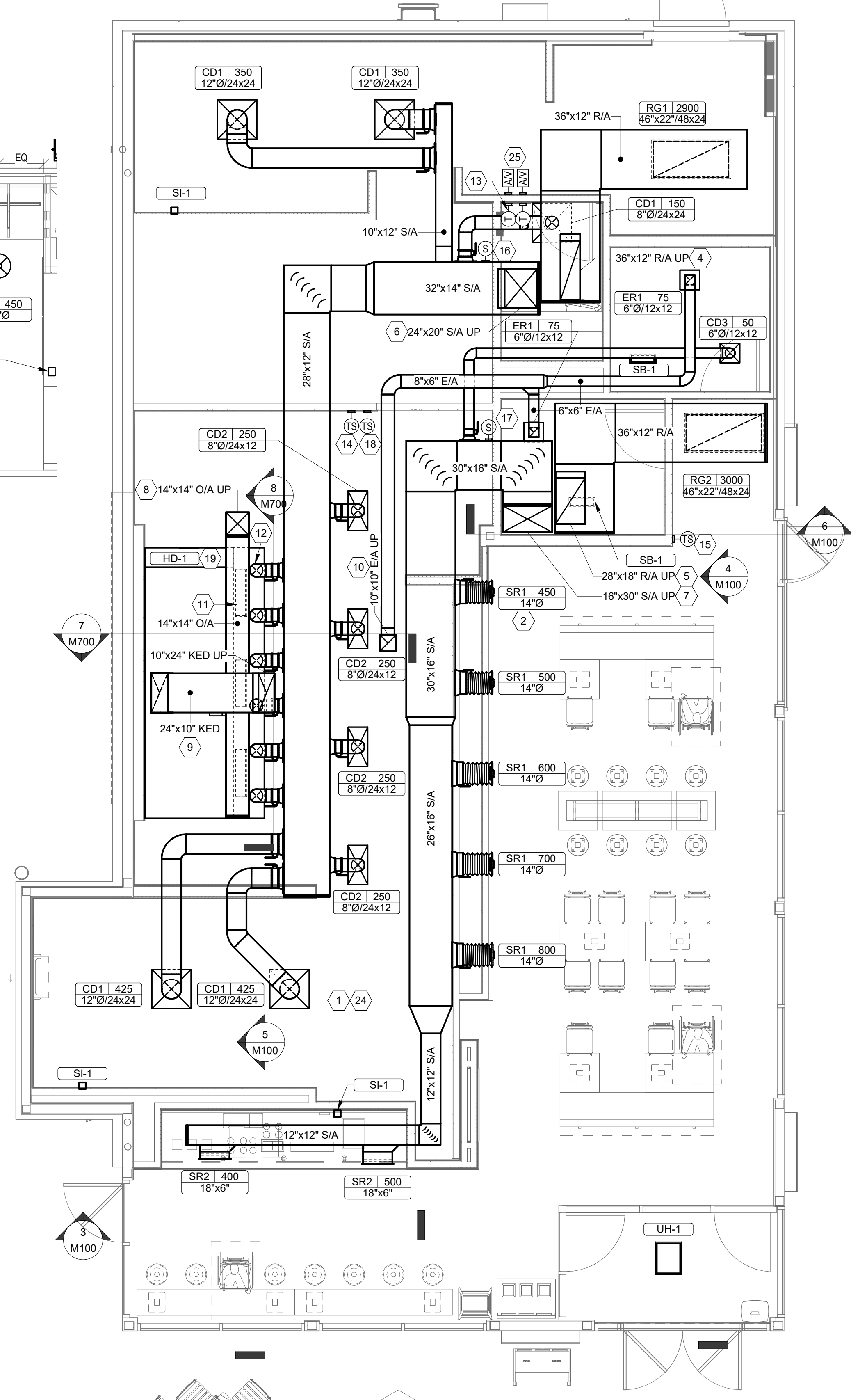
5 HVAC Fountain Area Section
1/4" = 1'-0"



3 HVAC Fountain Area Front Section
1/4" = 1'-0"



2 HVAC Roof Plan
1/8" = 1'-0"



1 HVAC Floor Plan
1/4" = 1'-0"

HVAC Plan Notes

- See architectural reflected ceiling plan for ceiling mounted equipment location. Typical.
- Paint ductwork visible through dining room supply registers black. Typical.
- Not used.
- Duct up for transition to RTU-1 return connection in roof curb. RTU-1 shall have an integral smoke detector mounted in the return air stream. Interlock smoke detector to RTU-1 operation.
- Duct up for transition to RTU-2 return connection in roof curb. RTU-2 shall have an integral smoke detector mounted in the return air stream. Interlock smoke detector to RTU-2 operation.
- Duct up from building supply through roof. Transition to RTU-1 supply connection in roof curb.
- Duct up from building supply through roof. Transition to RTU-2 supply connection in roof curb.
- Duct up through roof. Transition to MAU-1 supply connection in roof curb.
- Duct up from hood through roof to EF-1 compliant with NFPA 96. Provide radius elbows with an inside radius of 0.5W at elbows in grease duct.
- Duct up through roof to EF-2.
- 28/6 duct down to makeup air PSP duct connection. Transition to supply plenum opening size. Typical of 3. Cap unused duct connections.
- 8" dia. duct down to AC PSP duct connection. Transition to supply plenum opening size. Typical. Cap unused duct connections.
- Install GridPoint thermostats furnished by TEMS for RTU-1 and RTU-2 at this location at 48" AFF. Coordinate with electrical switching in this area. Provide wiring as shown in detail 8/E710.
- Install GridPoint zone sensor module furnished by TEMS for RTU-1 at this location 72" AFF directly to wall (no junction box). Coordinate location with equipment. Provide wiring as shown in detail 8/E710.
- Install GridPoint zone sensor module furnished by TEMS for RTU-2 at this location 66" AFF directly to wall (No junction box) Coordinate location with equipment. Provide wiring as shown in detail 8/E710.
- Install GridPoint supply probe furnished by TEMS for RTU-1 in the supply ductwork upstream from the first branch connection. Provide wiring as shown in detail 8/E710.
- Install GridPoint supply probe furnished by TEMS for RTU-2 in the supply ductwork upstream from the first branch connection. Provide wiring as shown in detail 8/E710.
- Install remote temperature sensor for hood HD-1 at this location 72" AFF. Coordinate location with equipment. Provide (2) #18 G. thermistor cable from temperature sensor to hood control panel.
- Install kitchen hood, HD-1. Support hood per manufacturer's installation instructions and as detailed in the architectural and structural drawings. Install hood according to the requirements of its listing, in compliance with NFPA 96, the building code, and authorities having jurisdiction. Hood shall have an integral duct collar temperature sensor to automatically energize the exhaust and makeup air fans is cooking temperatures are detected. Exhaust duct system to be welded or factory-manufactured water and airtight. Install cleanouts per code and as shown. Install hood per details 2.4, and 9/M700. Chipotle will provide an independent testing agency for testing the integrity of the grease duct system.
- Install remote condensing unit for walk-in cooler on roof as detailed in the architectural and structural drawings. Install refrigerant line set, thermostatic expansion valve, solenoid valve, temperature control, sight glass, filter drier, pressure control, low ambient controls, and weatherproof housing. Trap and slope refrigerant lines per manufacturer's recommendations. Installation shall comply with ASHRAE/ANSI Standard 15. Install the refrigerant line set under the roof deck to within 3' of the condensing unit. Cut 2-1/2" hole in walk-in cooler roof for refrigerant line set and seal per the cooler manufacturer's installation instructions after line set is installed.
- Install remote condenser for ice machine on roof as detailed in the architectural and structural drawings. Install refrigerant line set, thermostatic expansion valve, solenoid valve, temperature control, sight glass, filter drier, pressure control, low ambient controls, and weatherproof housing. Trap and slope refrigerant lines per manufacturer's recommendations. Seal piping penetrations through roof. Installation shall comply with ASHRAE/ANSI Standard 15. Install the refrigerant line set under the roof deck to within 3' of the remote condenser. If refrigerant piping to ice maker is exposed to public view conceal within a stainless-steel shroud as shown in the architectural drawings.
- Install rooftop equipment per manufacturer's installation instructions and as detailed in the architectural and structural drawings.
- Install Exhaust fan EF-1 per detail 5/M700 and as detailed in the architectural and structural drawings. Install grease ViroGuard system furnished by Chipotle on exhaust fan, EF-1.
- Provide supply diffuser connection to supply system per detail 1/M700. Typical.
- Provide audio/visual remote smoke detector annunciator with remote key operated reset. Wire a unit back to each smoke detector. Mount unit 60" AFF. Typical.
- Install REME HALO air purifier furnished by TUV in RTU per detail 6/M700. See electrical drawings for power connection information. Install UV warning stickers on face of enclosure per detail and on any RTU access door(s) through which the REME HALO would be visible if opened.
- Maintain 10' clearance between water heater flue termination and outside air intakes. Maintain 10' clearance between water heater combustion air intake and exhaust fan discharge. See plumbing drawings for more information on water heater flue and combustion air terminations.
- Adjust supply registers so that supply air hits wall on opposite side of room at approximately 7' AFF with no drafts felt in the dining room. Typical.

CONSULTANT:
AYRES
 MECHANICAL, ELECTRICAL,
 PLUMBING (MEP)
 1700 West Highway 36 - Suite 700
 Roseville, Minnesota 55113
 (651) 639-9606 Fax (651) 639-9618
 Project No. 81-0650

CLIENT:

 CHIPOTLE MEXICAN GRILL, INC.
 P.O. BOX 162966
 COLUMBUS, OH 43216-2966
 TELEPHONE: (614) 318-2962
 INTERNET: WWW.CHIPOTLE.COM

COPYRIGHT 2024
 THIS DRAWING IS AN INSTRUMENT OF SERVICE AND AS SUCH REMAINS THE PROPERTY OF CHIPOTLE MEXICAN GRILL, INC. PERMISSION FOR USE OF THIS DOCUMENT IS LIMITED AND CAN BE EXTENDED ONLY BY WRITTEN AGREEMENT WITH CHIPOTLE MEXICAN GRILL, INC.

PROJECT INFORMATION:

STORE NO.: 5388
 "Crown Point Main Street"
 1209 North Main Street
 Crown Point, IN 46307

SEAL:

 Date Signed: 08/15/2024

PROJECT NO. 2024-0008
 DRAWN BY LAO
 CHECKED BY DJF

ISSUE RECORD:
 04/29/2024 Permit Set
 08/16/2024 Construction Set

REVISIONS:

TITLE:
 HVAC Plan

SHEET NUMBER:
M100

Air Balance Schedule					
Identity	Supply Flow	Intake Flow	Return Flow	Exhaust Flow	Net Pressurization
EF-1				2550 CFM	-2550 CFM
EF-2				150 CFM	-150 CFM
MAU-1	1300 CFM	1300 CFM	0 CFM		1300 CFM
RTU-1	3400 CFM	500 CFM	2900 CFM		500 CFM
RTU-2	4000 CFM	1000 CFM	3000 CFM		1000 CFM
Grand total					100 CFM

Viroguard Schedule									
Identity	Count	Description	Duct Connection Size		Fan	Furnished By	Installed By	Basis of Design	Manufacturer
			Width	Height					
VG-1	1	Viroguard Hood Exhaust Fan Rooftop Containment System	16"	16"	EF-1	TDC	GC	enVIRomatic	

Sanitizing Equipment Schedule									
Identity	Count	Description	Furnished By	Installed By	Basis of Design		Specification		
					Manufacturer	Model			
SB-1	2	Bathroom Air Purification Unit	TUV	GC	RGF Environmental Group	BRU Assembly	See Electrical Sheets for connection information.		
SH-1	2	HVAC Air Purification Unit	TUV	GC	RGF Environmental Group	REME-Halo	See Detail 6/M700 for installation information.		
SI-1	3	Ice Machine Treatment System	TUV	GC	RGF Environmental Group	IMS-G-BA	See Plumbing Sheets for installation information.		

Grilles, Registers & Diffusers Schedule										
Identity	Description	Face Size	Material	Finish	Mounting	Furnished By	Installed By	Basis of Design		Specification
								Manufacturer	Model	
CD1	Perforated Ceiling Diffuser	24x24	Aluminum	White	Lay-In Full Face	GC	GC	Nailor	4320A Type L	Provide with integral OBD.
CD2	Perforated Ceiling Diffuser	24x12	Aluminum	White	Lay-In Full Face	GC	GC	Nailor	4320A Type L	Provide with integral OBD, remove 4-way deflectors.
CD3	Ceiling Diffuser	12x12	Aluminum	White Enamel	Surface Mount	GC	GC	Nailor	4320A Type S	Provide with integral OBD
ER1	Perforated Ceiling Exhaust	12x12	Aluminum	White	Surface Mount	GC	GC	Nailor	4330R Type S	Provide with integral OBD.
RG1	Perforated Ceiling Return	48x24	Aluminum	White	Lay-In Full Face	GC	GC	Nailor	4330R Type L	
RG2	Perforated Ceiling Return	48x24	Aluminum	White	Lay-In Full Face	GC	GC	Nailor	4330R Type S	
SR1	Adjustable Turbo Nozzle		Aluminum	White	Surface Mount	GC	GC	Air Concepts	ANR-14	Provide with concealed mounting and face-accessible OBD. See neck size on plans.
SR2	Double Deflection Supply Register		Aluminum	White	Surface Mount	GC	GC	Nailor	51DH	Provide with integral OBD. See neck size on plans.

Condensing Unit Schedule												
Identity	Description	Refrigerant		Product Weight	Electrical			Furnished By	Installed By	Basis of Design		Specification
		Type	Charge		Voltage	Phase	Manufacturer			Model		
CU-1	Condensing Unit - Walk-in Cooler	R-404A	10.40 lbm	250 lb	208 V	3	WCS	GC	Harford	KPCL99MZOP-3E	Furnished with walk-in cooler.	
CU-2	Remote Condenser - Low Capacity Ice Maker	R-404A	11.46 lbm	100 lb	120 V	1	KES	GC	Hoshizaki	URC-9FZ	Furnished with ice maker.	
CU-3	Remote Condenser - Soda Machine Ice Maker	R-404A	3.86 lbm	100 lb	120 V	1	KES	GC	Hoshizaki	URC-5FZ	Furnished with ice maker.	

HVAC Control Functions

- A. The main cooking exhaust fan (EF-1) and makeup air unit (MAU-1) shall be interlocked to operate together. This control circuit is activated by a switch and includes a fire protection override.
- B. The temperature in each zone is controlled by space temperature sensors connected to the thermostats located in the office. All zones shall operate with continuous fan operation during occupied times and intermittently as needed to maintain set points during unoccupied times. Outside air dampers shall be open continuously when either in occupied mode or when the hood system is ON and shall be closed during unoccupied periods.
- C. The thermostats shall determine occupied/unoccupied status based on the schedule in the energy management system.

Exhaust Fan Schedule													
Identity	Description	Fan Design			Motor Power	Electrical			Furnished By	Installed By	Basis of Design		Specification
		Airflow	ESP	Weight		Voltage	Phase	Manufacturer			Model		
EF-1	Upblast UL762 Exhaust Fan	2550 CFM	1.45 in-wg	220 lb	2.0 hp	208 V	3	HS	GC	CaptiveAire	DU180HFA	Direct drive UL762 listed fan furnished with weatherproof disconnect and vented roof curb.	
EF-2	Downblast Restroom Exhaust Fan	150 CFM	0.60 in-wg	81 lb	0.3 hp	120 V	1	HS	GC	CaptiveAire	DR12HFA	Direct drive restroom exhaust fan furnished with integral disconnect, speed control, backdraft damper, and curb.	

Make-Up Air Unit Schedule															
Identity	Description	Airflow	ESP	Heating			Weight	Electrical			Furnished By	Installed By	Basis of Design		Specification
				Input Rating	Output Rating	EAT		Motor Power	Voltage	Phase			Manufacturer	Model	
MAU-1	Make-Up Air Unit	1300 CFM	0.50 in-wg	225000 Btu/h	220000 Btu/h	-1 °F	650 lb	1.00 hp	208 V	3	HS	GC	CaptiveAire	A1-D.250-15D	12.5:1 Turndown. Furnished with disconnect, roof curb, screen intake, and washable aluminum filters.

Kitchen Hood Schedule																							
Identity	Description	Max Cooking Temp	Exhaust Plenum			Perforated Supply Plenums						No. of Light Fixtures	Electrical			Basis of Design		Specification					
			Airflow	ESP	Qty	MAU Plenum			AC Plenum				Furnished By	Installed By	Manufacturer	Model							
						Duct Collars	Qty	Width	Length	Airflow	Qty						Width		Length				
HD-1	Type I Canopy Hood with Perforated MAU and AC Supply Plenums	600 °F	2550 CFM	0.97 in-wg	1	10"	24"	1300 CFM	3	6"	28"	700 CFM	6	8"	8	1150 lb	120 V	1	HS	GC	CaptiveAire	5424 ND-2-ACPSP-F	Material: 18 GA. Type 430 SS. Furnished with vaporproof incandescent light fixtures, 16" Tall HE SS filters, integral utility cabinet, kitchen exhaust suppression system, duct collar temperature sensor, prewire package, spare fire system dry contact, and 4-Pole 20A contactor.

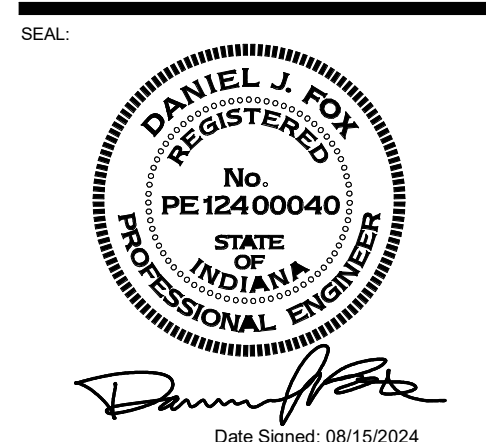
Rooftop Unit Schedule																											
Identity	Description	Nominal Capacity	EER	Airflow			Net Cooling Capacity					Heating Capacity			Number of		Refrigerant	Weight	Electrical				Basis of Design		Specification		
				Total	OA	ESP	Total	Sensible	EAT		Outdoor EDB	Input	Output	EAT	Compressors	Circuits			Type	MOCF	FLA	Voltage	Phase	Furnished By		Installed By	Manufacturer
RTU-1	Kitchen Rooftop Unit	8.5 ton	12	3400 CFM	500 CFM	0.80 in-wg	99700 Btu/h	69300 Btu/h	77.3 °F	64.3 °F	95 °F	224000 Btu/h	181000 Btu/h	60 °F	2	2	R-410A	1094 lb	50 A	45 A	208 V	3	HES	GC	Carrier	48FCFM09C2M5-6W4F0	Furnished with comp. enthalpy economizer, barometric relief, return smoke detector w/ remote keyed annunciator/reset, M.O.D., MERV-8 filters, curb, hail guard, tool-less hinged access panels, disconnect, & unit-mounted convenience receptacle.
RTU-2	Dining Room Rooftop Unit	10.0 ton	12	4000 CFM	1000 CFM	0.80 in-wg	117500 Btu/h	91100 Btu/h	78.9 °F	65.5 °F	95 °F	250000 Btu/h	205000 Btu/h	52 °F	2	2	R-410A	1125 lb	60 A	35 A	208 V	3	HES	GC	Carrier	48FCFN12C2M5-6W4F0	Furnished with comp. enthalpy economizer, barometric relief, return smoke detector w/ remote keyed annunciator/reset, M.O.D., MERV-8 filters, curb, hail guard, tool-less hinged access panels, disconnect, & unit-mounted convenience receptacle.



COPYRIGHT 2024
 THIS DRAWING IS AN INSTRUMENT OF SERVICE AND AS SUCH REMAINS THE PROPERTY OF CHIPOTLE MEXICAN GRILL, INC. PERMISSION FOR USE OF THIS DOCUMENT IS LIMITED AND CAN BE EXTENDED ONLY BY WRITTEN AGREEMENT WITH CHIPOTLE MEXICAN GRILL, INC.

PROJECT INFORMATION:

STORE NO.: 5388
 "Crown Point Main Street"
 1209 North Main Street
 Crown Point, IN 46307



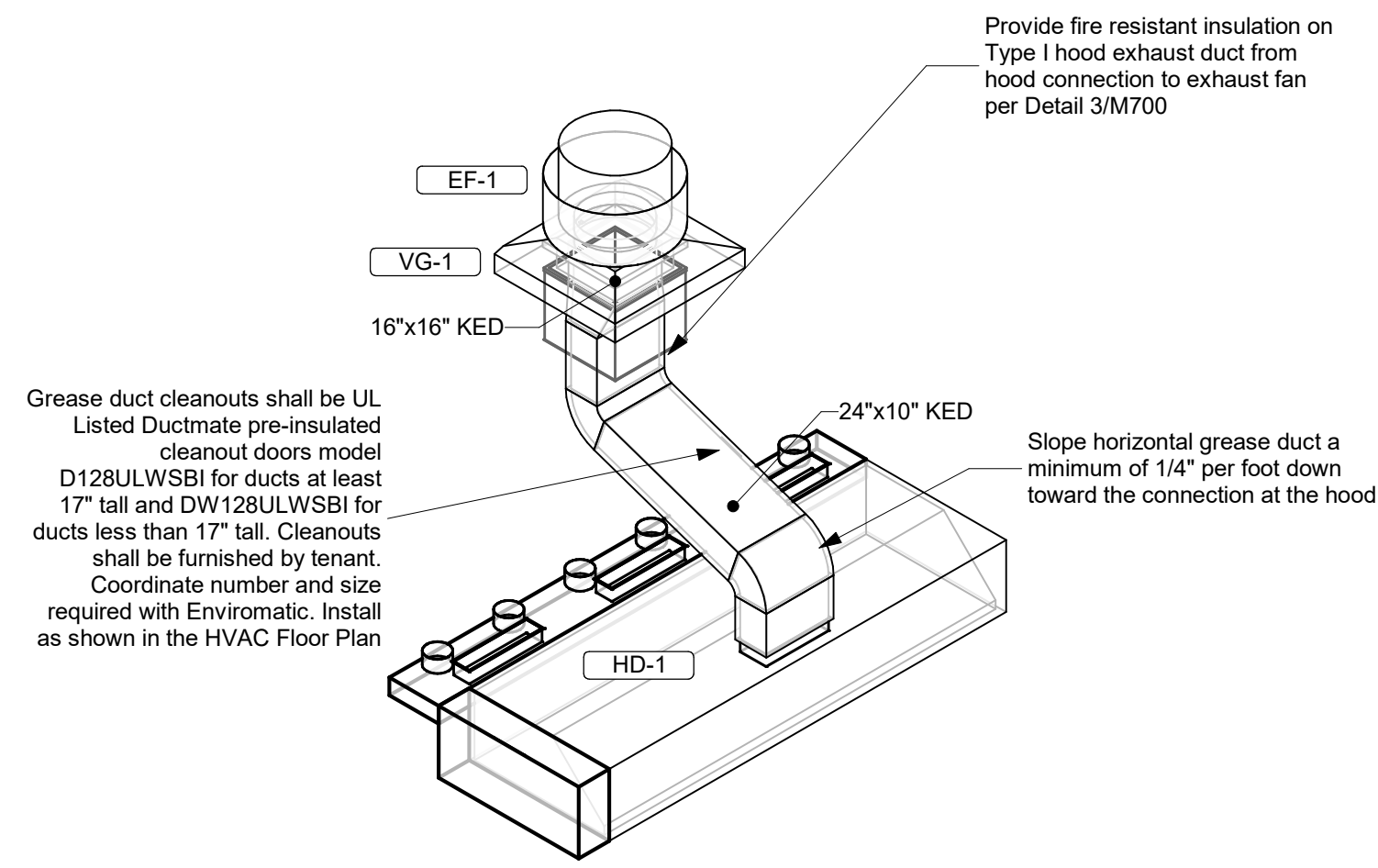
PROJECT NO. 2024-0008
 DRAWN BY LAO
 CHECKED BY DJF

ISSUE RECORD:
 04/29/2024 Permit Set
 08/16/2024 Construction Set

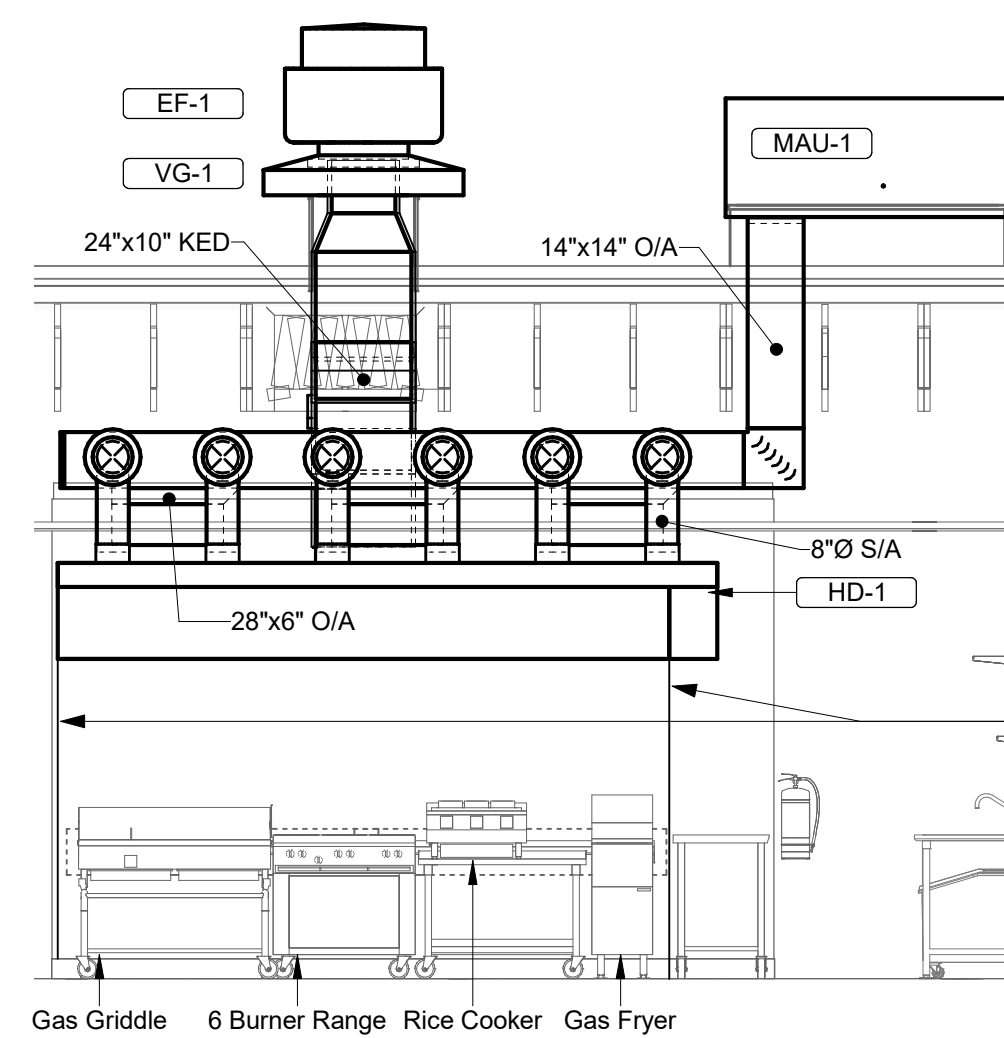
REVISIONS:

TITLE:
 HVAC Schedules

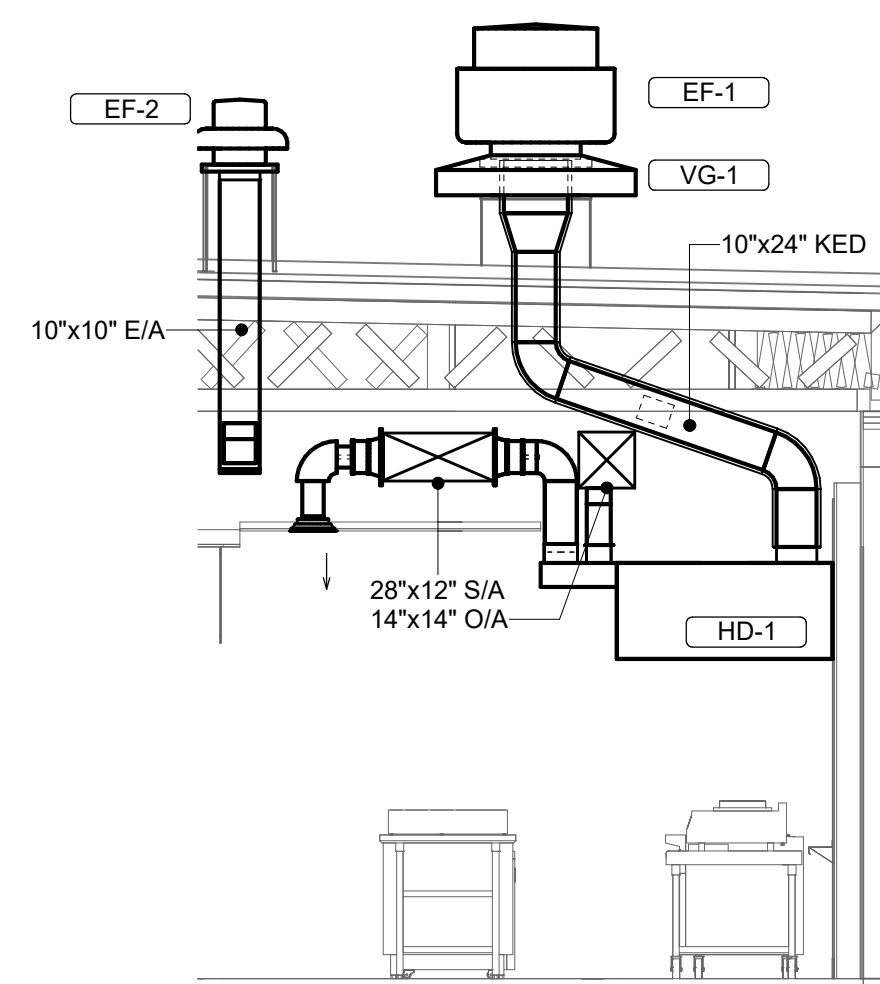
SHEET NUMBER:
M600



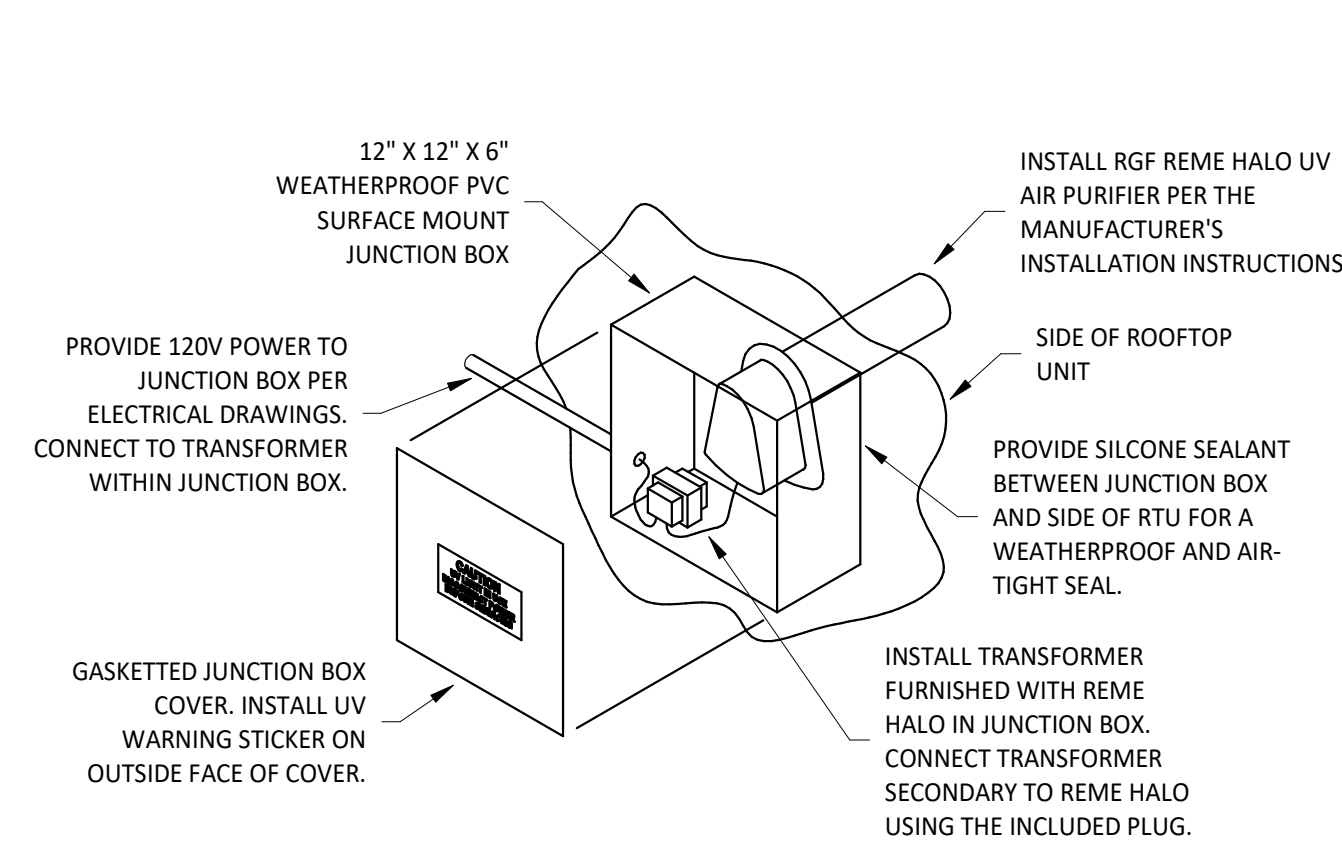
9 Hood Exhaust Riser
M700 NOT TO SCALE



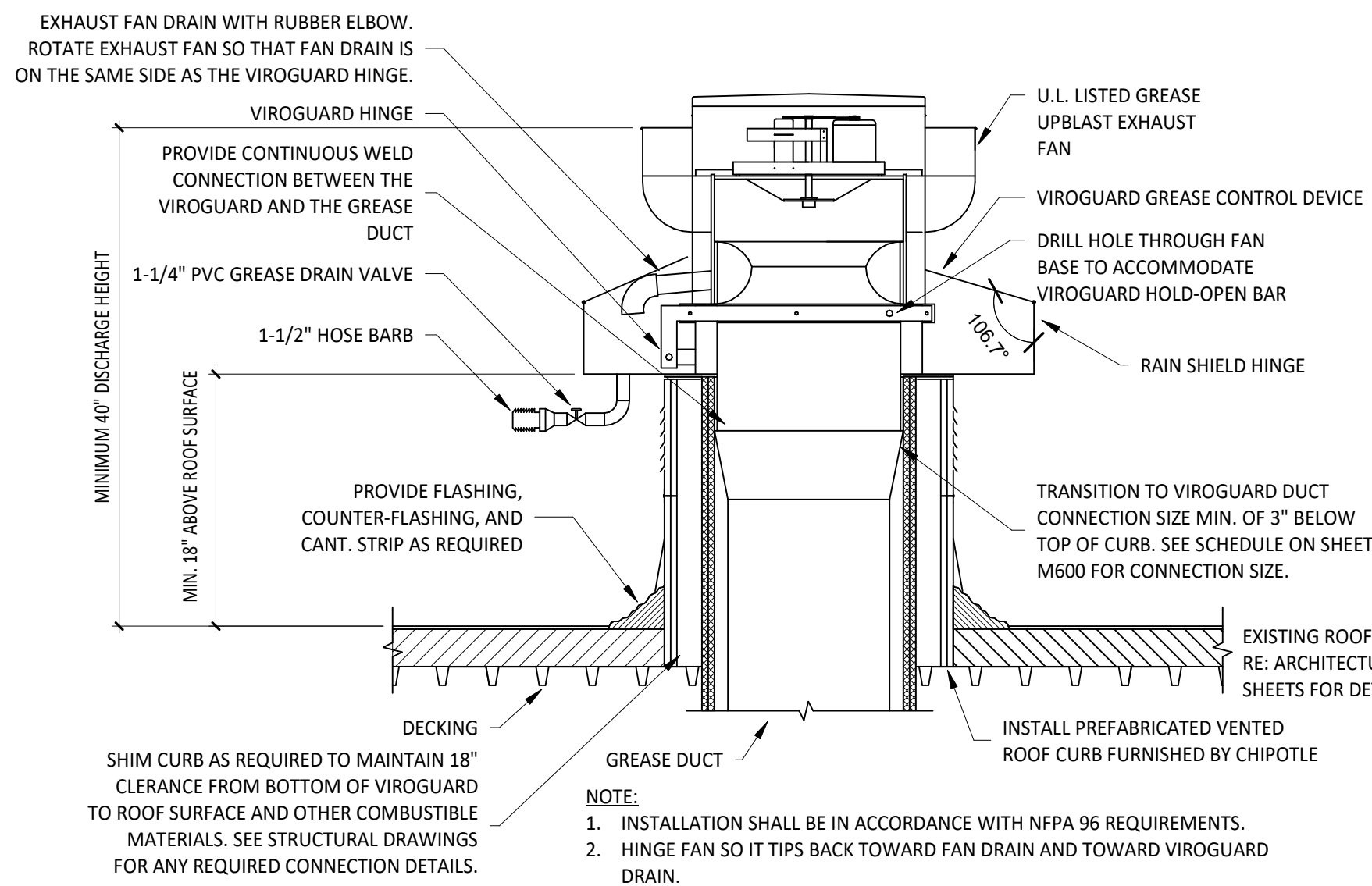
8 Hood Elevation
M700 NOT TO SCALE



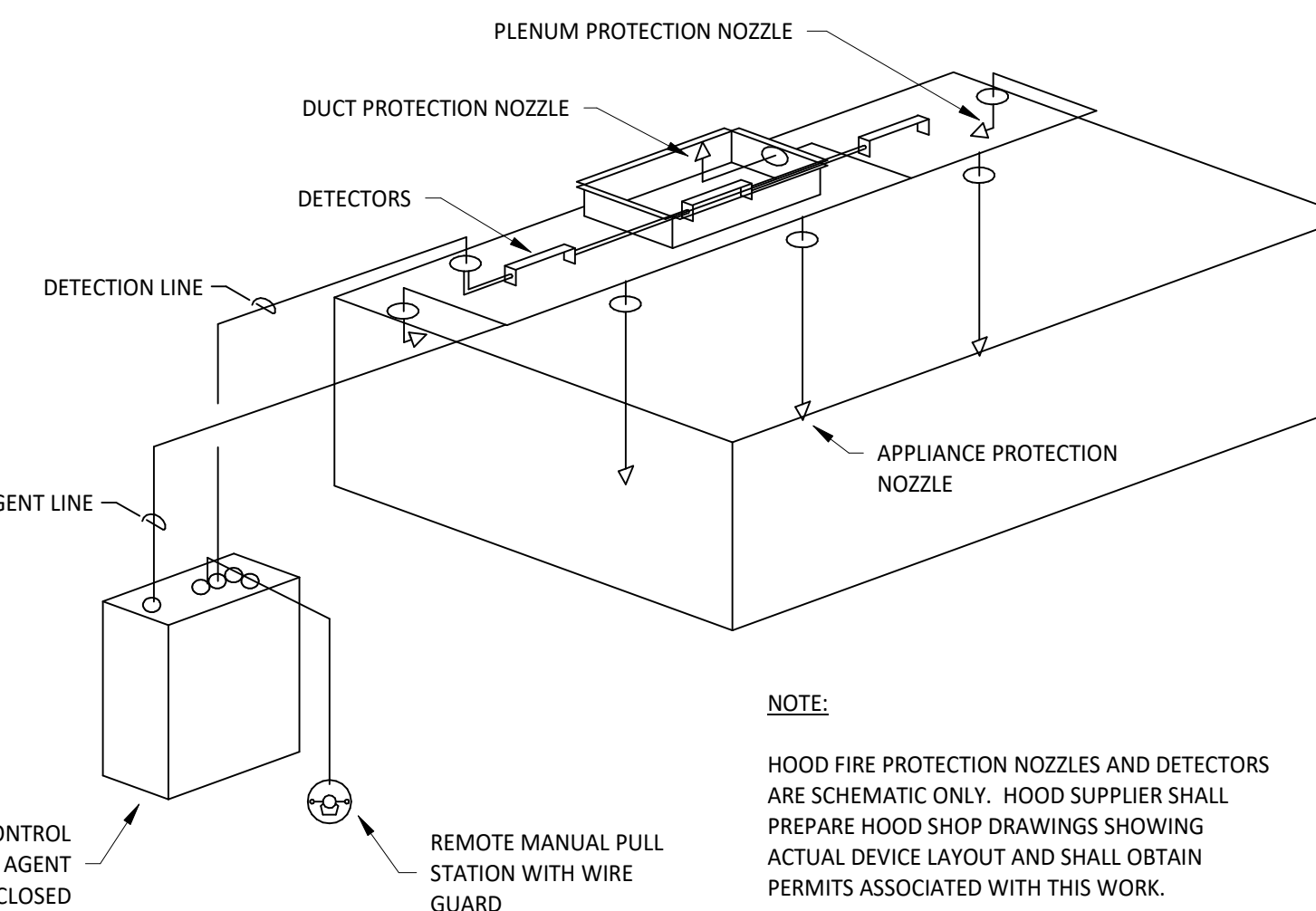
7 Duct Section at Hood
M700 NOT TO SCALE



6 H - UV RTU Detail
M700 NOT TO SCALE

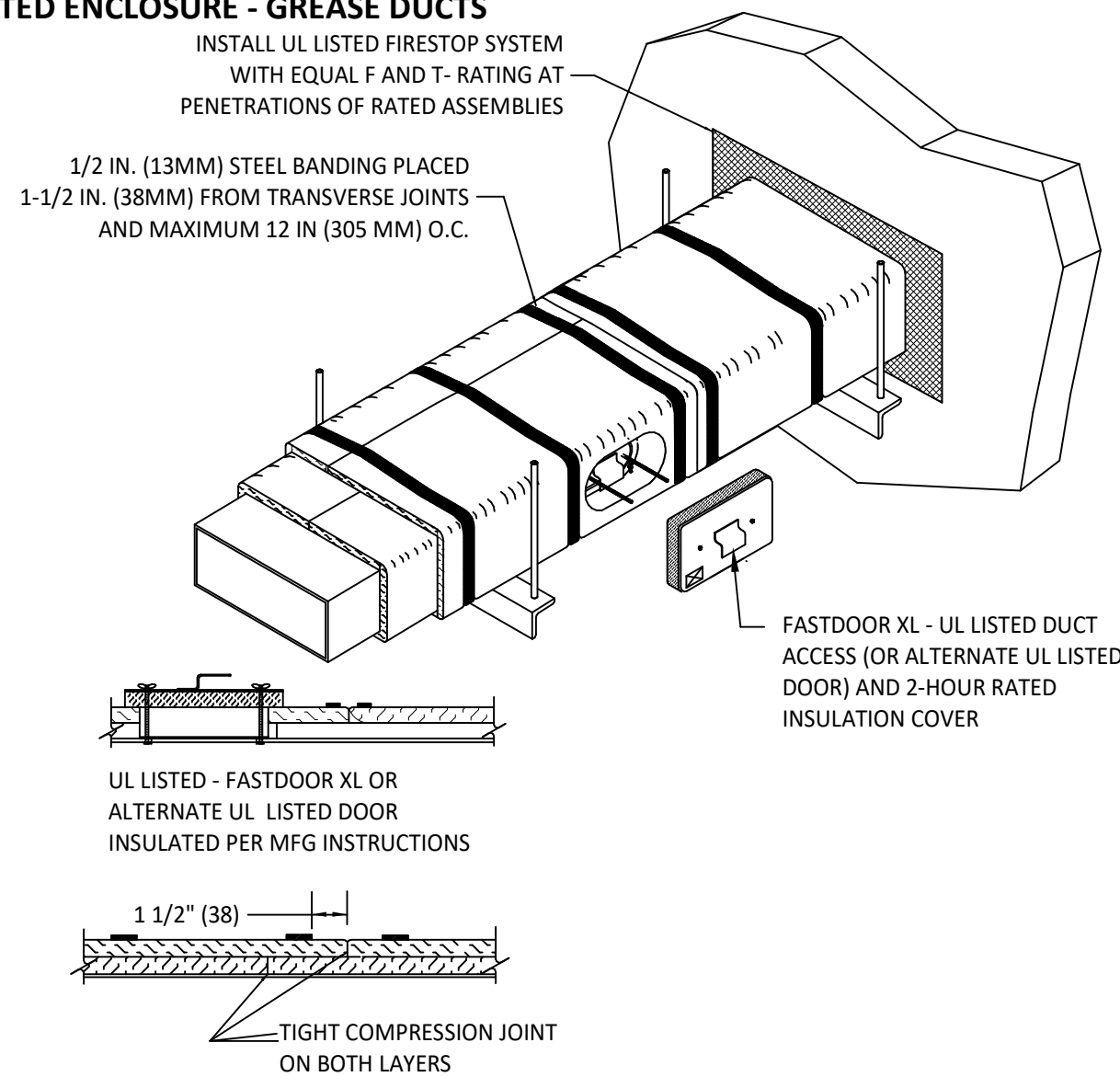


5 H-Grease Exhaust Fan
M700 NOT TO SCALE

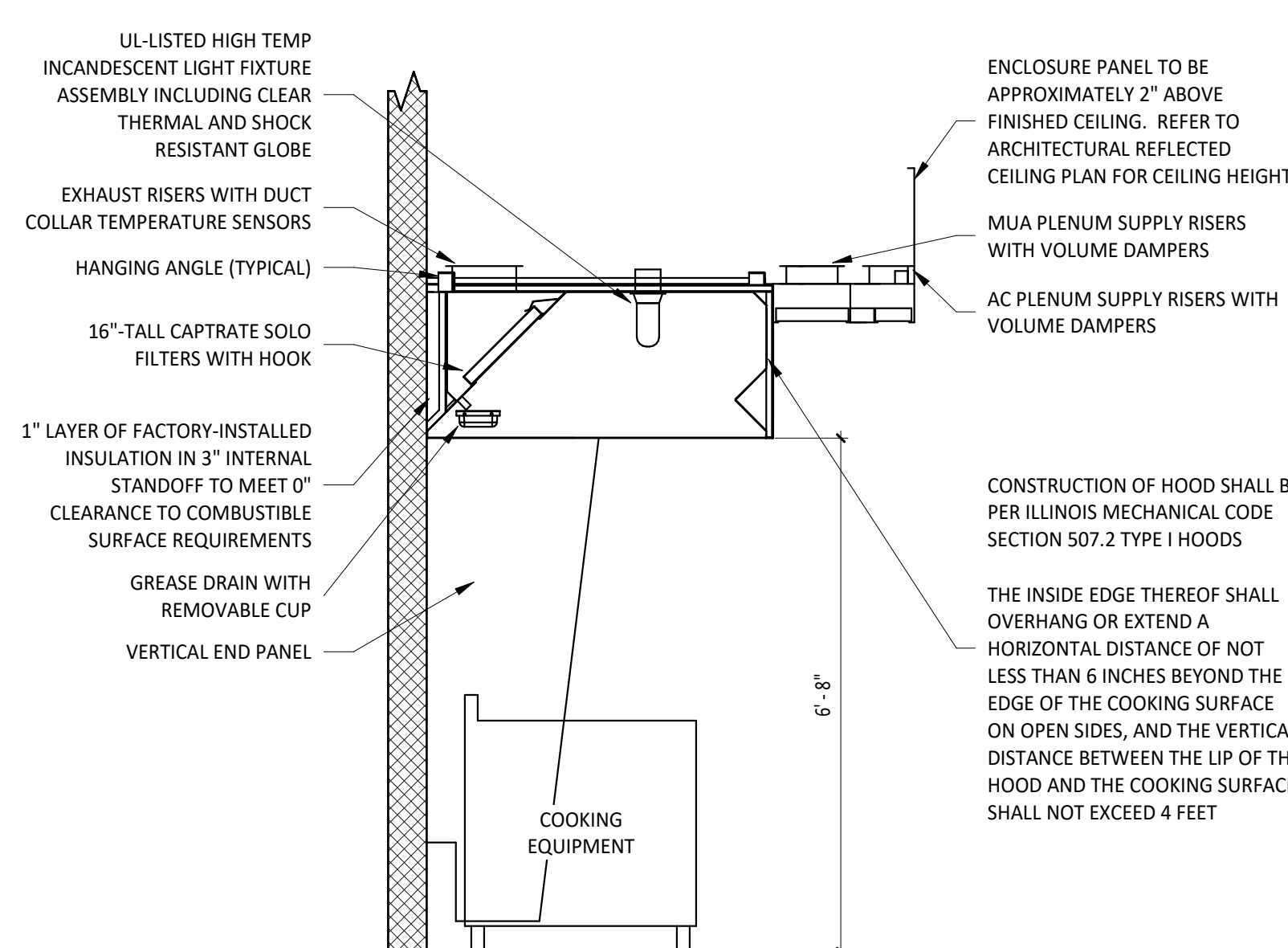


4 H-Fire Suppression System Schematic
M700 NOT TO SCALE

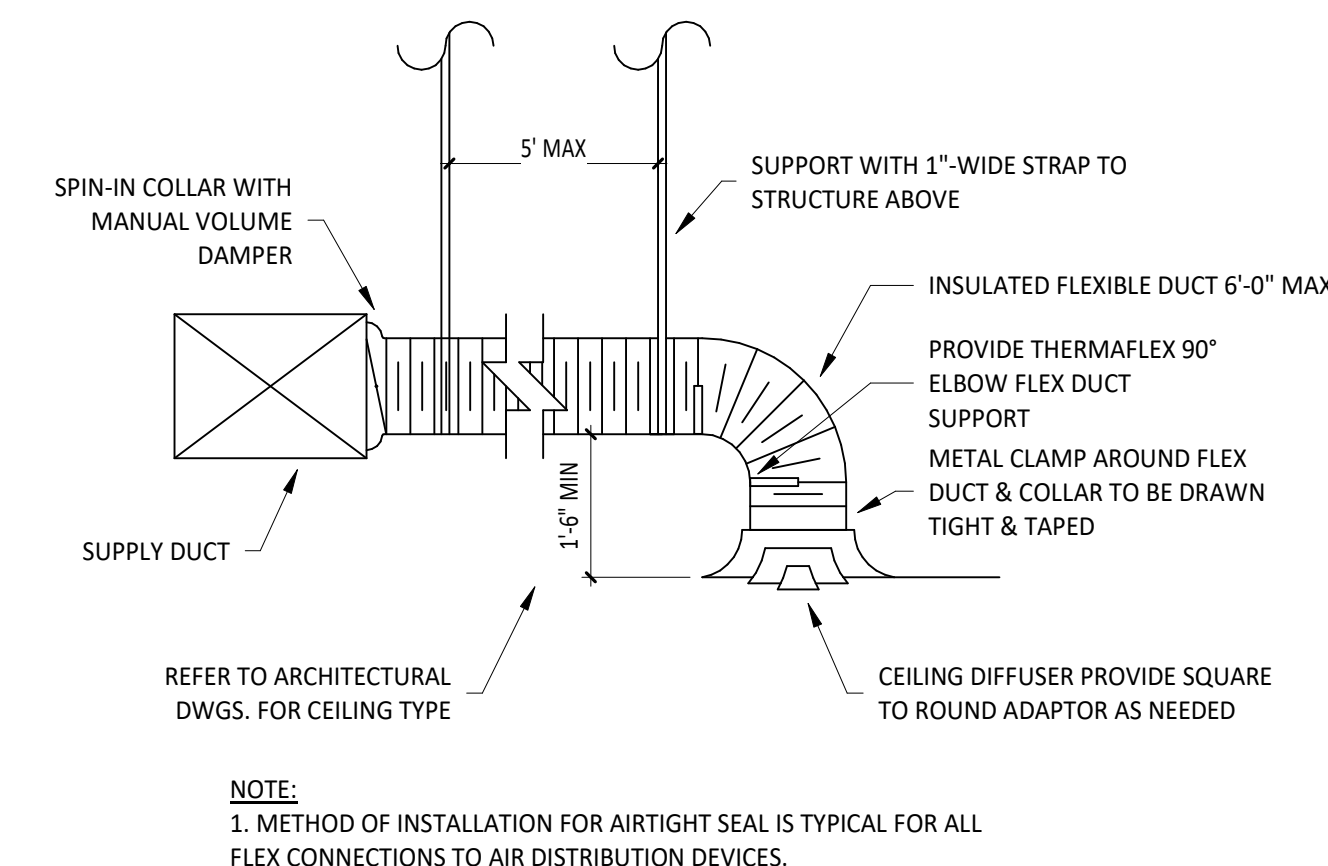
- FIRE RATED ENCLOSURE - GREASE DUCTS**
- THERMAL CERAMICS FIREMASTER FASTWRAP XL IS TESTED TO ASTM E2336 AND UL LISTED PER HNTK.G18 TO PROVIDE ZERO CLEARANCE TO COMBUSTIBLES AND TO PROVIDE A 1- OR 2-HOUR ENCLOSURE. THROUGH PENETRATIONS FIRESTOP SYSTEMS ARE TESTED IN ACCORDANCE WITH ASTM E 814 (UL 1479). ICC CODE EVALUATION PER REPORT UL ER 14229-01.
 - COMPLIANT TO THE FOLLOWING CODES:
NFPA 96
INTERNATIONAL MECHANICAL CODES
UNIFORM MECHANICAL CODE.
CALIFORNIA MECHANICAL CODE
 - INSULATION APPLIED IN TWO LAYERS WITH TIGHT COMPRESSION JOINT ON BOTH LAYERS AT ALL JOINTS.
 - MINIMUM 16 GAUGE CARBON STEEL (OR 18 GAGE STAINLESS STEEL) RECTANGULAR OR ROUND GREASE EXHAUST DUCT
 - INSTALL UL LISTED AND LIQUID TIGHT THERMAL CERAMICS FASTDOOR XL ACCESS DOORS, OR ALTERNATE DOOR UL LISTED PER UL1978, AT ALL CHANGES IN DIRECTION AND AT MINIMUM EVERY 20 FT ON HORIZONTAL RUNS.
 - SUPPORT HANGER SYSTEMS DO NOT NEED TO BE WRAPPED PROVIDED THE HANGER RODS ARE MINIMUM OF 3/8 IN. DIAMETER AND SUPPORTS ARE MINIMUM 2 X 2 X 1/8 IN. STEEL ANGLE OR SMACNA EQUIVALENT SUPPORT SYSTEM.
 - THERMAL CERAMICS DUCT WRAP SHALL BE INSTALLED DIRECTLY ONTO THE DUCT AND APPLIED FROM THE HOOD CONNECTION TO THE CONNECTION TO THE FAN.
 - THERMAL CERAMICS DUCT ENCLOSURE SYSTEM SHALL BE INSTALLED IN STRICT ACCORDANCE WITH MANUFACTURERS INSTRUCTIONS AND UL LISTINGS.



3 H-Firemaster Duct Wrap
M700 NOT TO SCALE



2 H-Hood Section View
M700 NOT TO SCALE



1 H-Diffuser Connection
M700 NOT TO SCALE

STORE NO.: 5308
"Crown Point Main Street"
1209 North Main Street
Crown Point, IN 46307