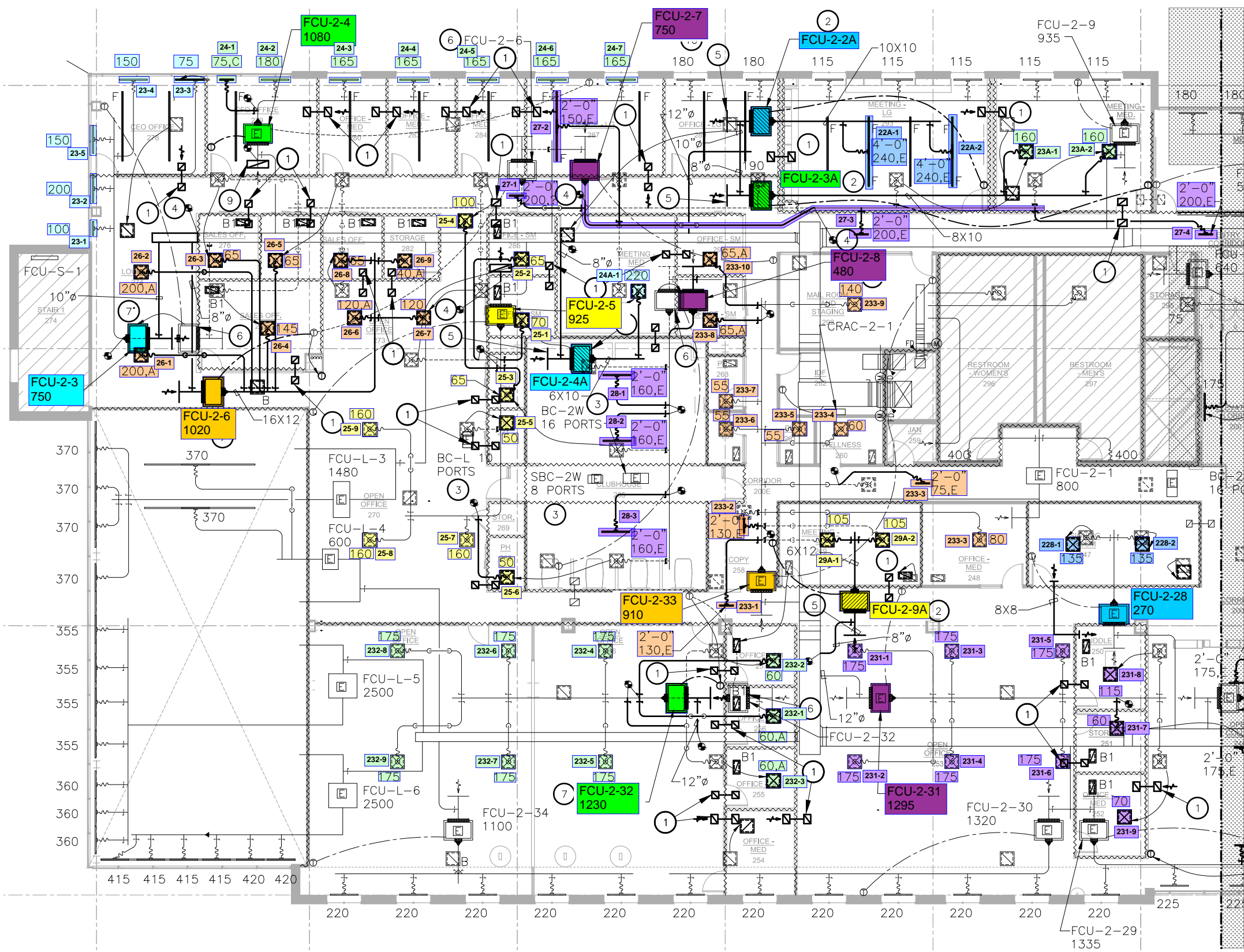
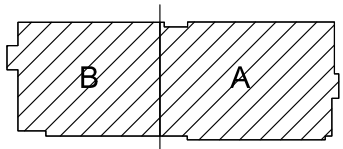


# NOTES BY SYMBOL (X) :

1. PROVIDE ACOUSTICALLY LINED RETURN AIR BOOT THRU WALL TO DECK AS HIGH AS POSSIBLE ABOVE CEILING WITH INLET ELBOW AND OUTLET 90° ELBOW FACING UPWARD. REFER TO DUCT SIZING CHART. REFER TO DETAIL IM03.01 FOR MORE INFORMATION.
2. FC UNIT TO BE SUSPENDED FROM STRUCTURE. PROVIDE A GALVANIZED SHEET METAL SECONDARY DRAIN PAN THAT IS A MINIMUM OF 3" LARGER (ON EACH SIDE) THAN ANY DIMENSION OF THE UNIT AND MUST EXTEND UNDER THE CONDENSATE PUMPS. EXTEND FULL SIZED RETURN AIR PLENUM AS INDICATED ON DRAWINGS. PROVIDE MANUAL DAMPER AT OUTSIDE AIR DUCT CONNECTION TO PLENUM.
3. EXISTING BRANCH CONTROLLER SUSPENDED FROM STRUCTURE WITH ISOLATION SPRINGS.
4. EXTEND NEW FULL SIZE DUCT SAME SIZE AND MATERIALS TO MATCH EXISTING DUCT. VERIFY SIZE AT JOB SITE PRIOR TO BIDDING.
5. EXTEND FULL SIZED RETURN PLENUM FROM FAN COIL UNIT AS SHOWN. PROVIDE WIRE MESH AT RETURN AIR OPENING IN PLENUM. CONNECT OUTSIDE AIR DUCT WITH BALANCING DAMPER AS SHOWN ON DETAIL LOCATED ON SHEET IM03.01.
6. EXISTING LOCATION OF FAN COIL UNIT WITH RETURN AIR PLENUM TO BE RELOCATED. REMOVE EXISTING DUCTWORK AS INDICATED ON DRAWINGS.
7. NEW LOCATION OF FAN COIL UNIT RETURN AIR PLENUM. MOUNT BOX FROM STRUCTURE ABOVE. MODIFY RETURN AIR PLENUM AS REQUIRED AND EXTEND NEW SUPPLY DUCT AS INDICATED ON DRAWINGS. COORDINATE RELOCATION WITH OTHER TRADES INVOLVED.
8. COORDINATE WITH GENERAL CONTRACTOR TO ENSURE DOOR HAS A 1/2" AIR GAP BELOW DOOR FOR RETURN AIR OUT OF ROOM.
9. MODIFY EXISTING RETURN AIR PLENUM TO PROVIDE 90° ELBOW FACING UPWARD. REPLACE WIRE MESH OVER RETURN AIR OPENING.
10. CONFIRM EXACT LOCATION OF EXISTING FAN COIL UNIT AT JOB SITE TO ENSURE IT DOES NOT CONFLICT WITH EQUIPMENT CLEARANCES AND WALL TO DECK. PROVIDE PRICING FOR AN ALTERNATE BID TO RELOCATE UNIT AND EXTEND OUTSIDE AIR DUCT AND RELATED PIPING TO NEW LOCATION. COORDINATE RELOCATION WITH OTHER CONTRACTORS INVOLVED.
11. PROVIDE EXPANDED TAP AT LOCATIONS INDICATED ON DRAWINGS. REFER TO DETAIL ON SHEET IM03.01 FOR ADDITIONAL INFORMATION.

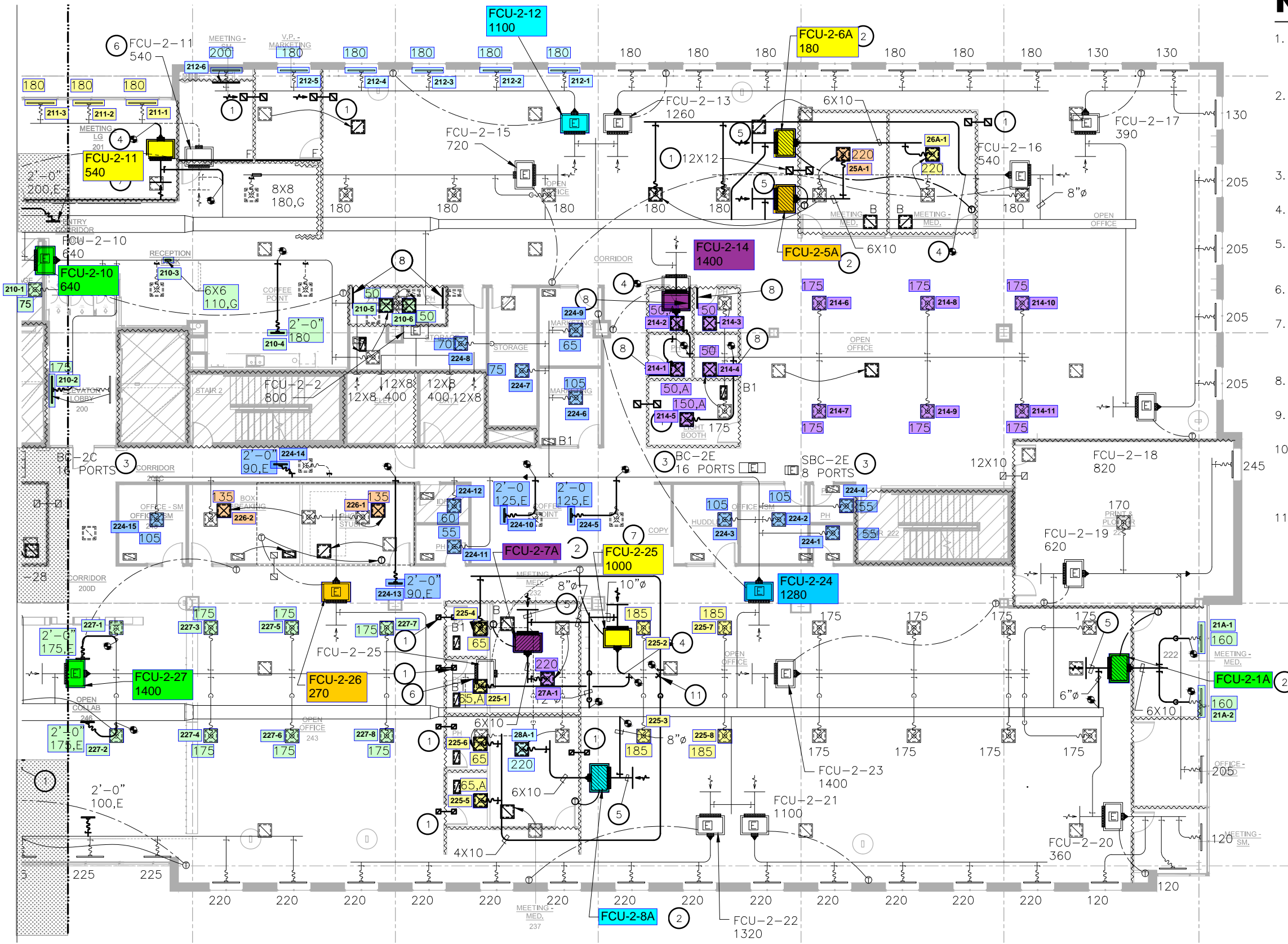


① LEVEL 02 - MECHANICAL PLAN - SEGMENT B



# NOTES BY SYMBOL (X) :

1. PROVIDE ACOUSTICALLY LINED RETURN AIR BOOT THRU WALL TO DECK AS HIGH AS POSSIBLE ABOVE CEILING WITH INLET ELBOW AND OUTLET 90° ELBOW FACING UPWARD. REFER TO DUCT SIZING CHART. REFER TO DETAIL IM03.01 FOR MORE INFORMATION.
2. FC UNIT TO BE SUSPENDED FROM STRUCTURE. PROVIDE A GALVANIZED SHEET METAL SECONDARY DRAIN PAN THAT IS A MINIMUM OF 3" LARGER (ON EACH SIDE) THAN ANY DIMENSION OF THE UNIT AND MUST EXTEND UNDER THE CONDENSATE PUMPS. EXTEND FULL SIZED RETURN AIR PLENUM AS INDICATED ON DRAWINGS. PROVIDE MANUAL DAMPER AT OUTSIDE AIR DUCT CONNECTION TO PLENUM.
3. EXISTING BRANCH CONTROLLER SUSPENDED FROM STRUCTURE WITH ISOLATION SPRINGS.
4. EXTEND NEW FULL SIZE DUCT SAME SIZE AND MATERIALS TO MATCH EXISTING DUCT. VERIFY SIZE AT JOB SITE PRIOR TO BIDDING.
5. EXTEND FULL SIZED RETURN PLENUM FROM FAN COIL UNIT AS SHOWN. PROVIDE WIRE MESH AT RETURN AIR OPENING IN PLENUM. CONNECT OUTSIDE AIR DUCT WITH BALANCING DAMPER AS SHOWN ON DETAIL LOCATED ON SHEET IM03.01.
6. EXISTING LOCATION OF FAN COIL UNIT WITH RETURN AIR PLENUM TO BE RELOCATED. REMOVE EXISTING DUCTWORK AS INDICATED ON DRAWINGS.
7. NEW LOCATION OF FAN COIL UNIT RETURN AIR PLENUM. MOUNT BOX FROM STRUCTURE ABOVE. MODIFY RETURN AIR PLENUM AS REQUIRED AND EXTEND NEW SUPPLY DUCT AS INDICATED ON DRAWINGS. COORDINATE RELOCATION WITH OTHER TRADES INVOLVED.
8. COORDINATE WITH GENERAL CONTRACTOR TO ENSURE DOOR HAS A 1/2" AIR GAP BELOW DOOR FOR RETURN AIR OUT OF ROOM.
9. MODIFY EXISTING RETURN AIR PLENUM TO PROVIDE 90° ELBOW FACING UPWARD. REPLACE WIRE MESH OVER RETURN AIR OPENING.
10. CONFIRM EXACT LOCATION OF EXISTING FAN COIL UNIT AT JOB SITE TO ENSURE IT DOES NOT CONFLICT WITH EQUIPMENT CLEARANCES AND WALL TO DECK. PROVIDE PRICING FOR AN ALTERNATE BID TO RELOCATE UNIT AND EXTEND OUTSIDE AIR DUCT AND RELATED PIPING TO NEW LOCATION. COORDINATE RELOCATION WITH OTHER CONTRACTORS INVOLVED.
11. PROVIDE EXPANDED TAP AT LOCATIONS INDICATED ON DRAWINGS. REFER TO DETAIL ON SHEET IM03.01 FOR ADDITIONAL INFORMATION.



① LEVEL 02 - MECHANICAL PLAN - SEGMENT A

