



**GENERAL DUCT PLAN NOTES:**

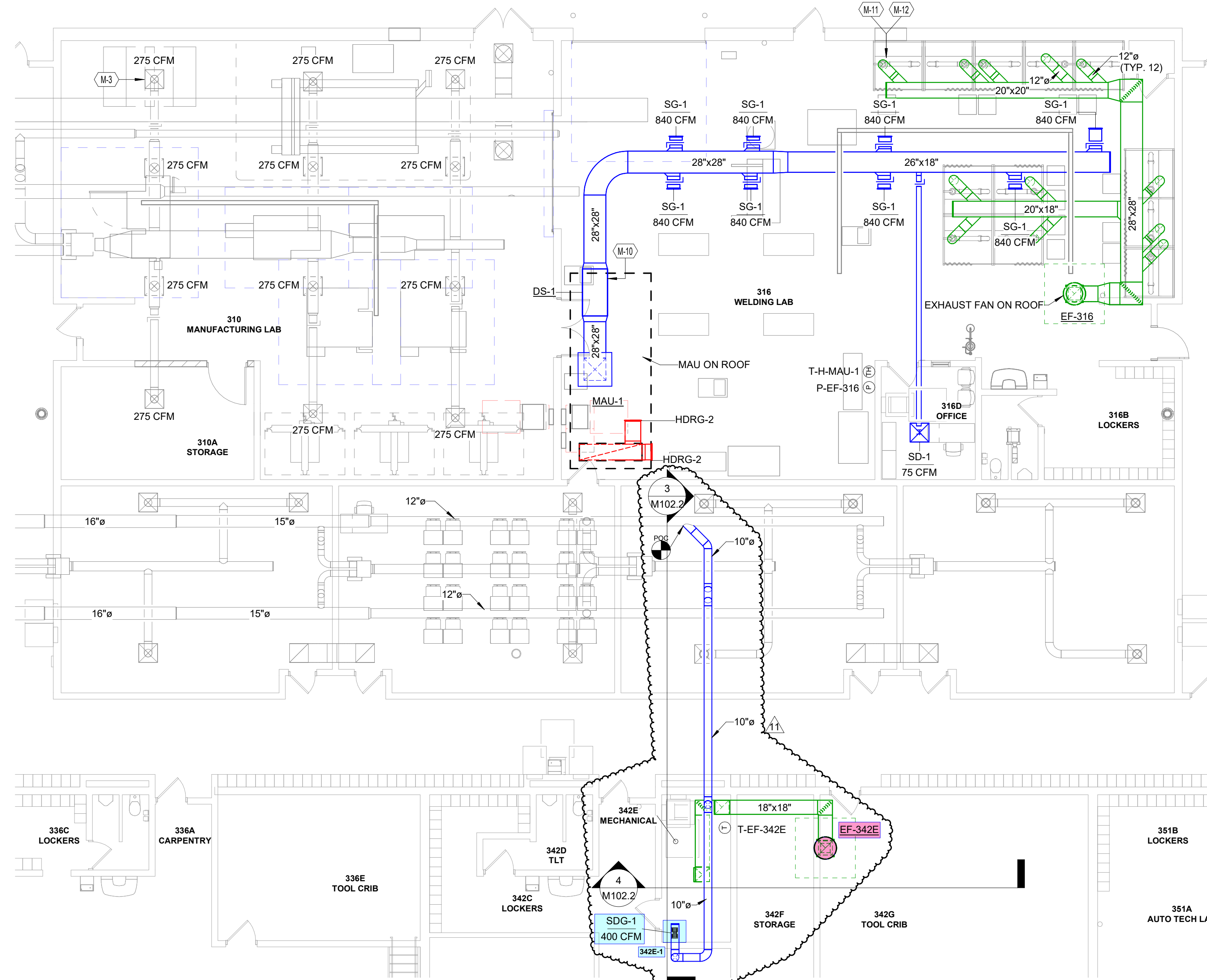
- A. INLET AND DISCHARGE DUCTS CONNECTING TO VAV BOXES ARE TO BE THE SAME SIZE AS VAV BOX INLET AND DISCHARGE RESPECTIVELY UNLESS NOTED OTHERWISE.
- B. DUCTS SERVING DIFFUSERS AND GRILLES ARE TO BE THE SAME SIZE AS DIFFUSER NECK SIZE OR GRILLE FACE UNLESS NOTED OTHERWISE.
- C. VAV BOX CONTROLLER ACCESS IS SHOWN AS A HASHED BOX.
- D. AIR TRANSFER DUCTS ARE 14" X 14" UNLESS NOTED OTHERWISE. CONTRACTOR TO PROVIDE ADDITIONAL TRANSFER OPENINGS ABOVE CEILING AS NEEDED FOR AIR RETURN.
- E. DO NOT ROUTE DUCTWORK OVER ELECTRICAL EQUIPMENT.
- F. PROVIDE AT LEAST 3 STRAIGHT DUCT DIAMETERS AT INLET OF VAV BOXES.
- G. DO NOT USE FLEXIBLE DUCTWORK AT INLET OF VAV BOX.
- H. PROVIDE VOLUME CONTROL DAMPERS IN RUN-OUT DUCT TO ALL SUPPLY AIR DEVICES.
- I. REBALANCE ALL DIFFUSERS TO NEW CFM INDICATED.
- J. INDEPENDENTLY SUPPOORT ALL DIFFUSERS AND GRILLES FOR REUSE IN NEW WORK.

**GENERAL HVAC DEMOLITION NOTES:**

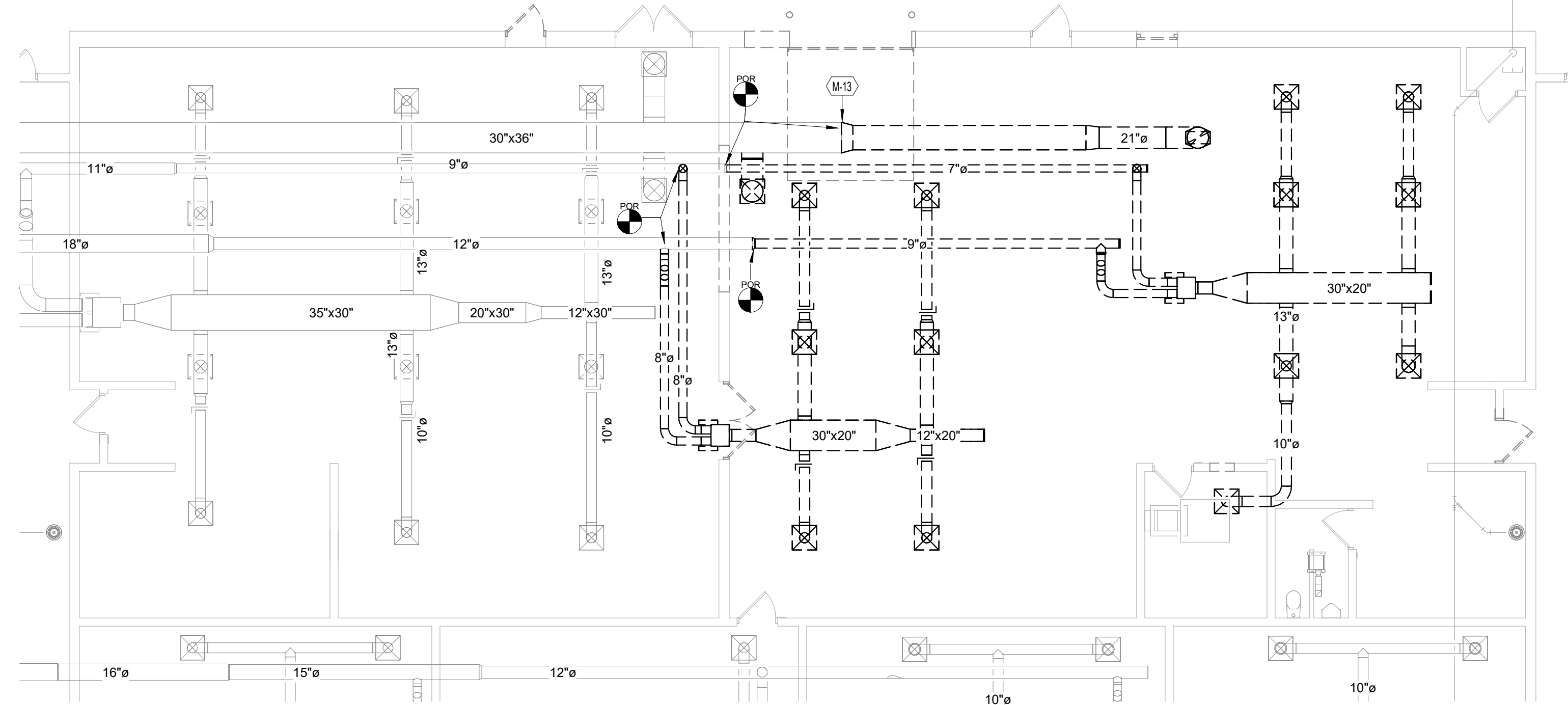
- A. DRAWING IS BASED ON FIELD OBSERVATIONS AND EXISTING DRAWINGS. NOTIFY CM OF DISCREPANCIES DUE TO ACTUAL FIELD CONDITIONS BEFORE PROCEEDING.
- B. DUCTWORK, PIPING, ACCESSORIES, EQUIPMENT, AND ALL OTHER HVAC SCOPE DENOTED BY DASHED LINE TYPE INDICATES DEMOLITION SCOPE.
- C. DUCTWORK, PIPING, ACCESSORIES, EQUIPMENT, AND ALL OTHER HVAC SCOPE DENOTED BY GRAY LINE TYPE INDICATES SCOPE THAT IS EXISTING TO REMAIN.
- D. DEMOLISH ALL EXISTING HVAC NOT REUSED IN NEW DESIGN OR NOTED TO BE ABANDONED IN PLACE.

**KEYNOTES**

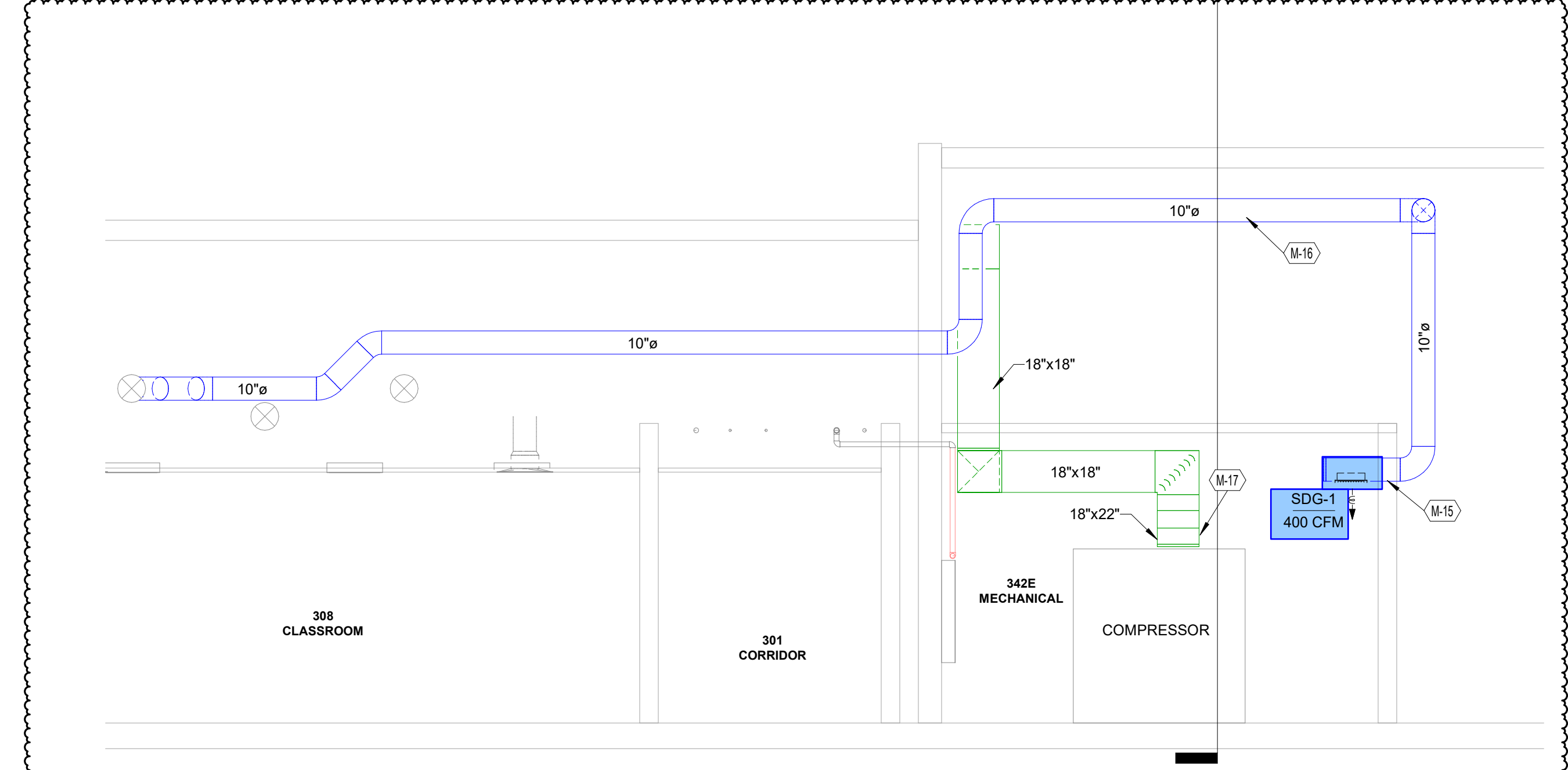
- M-3 REBALANCE DIFFUSER TO NEW CFM (TYPICAL OF 12).
- M-10 PROVIDE SOUND ATTENUATION AT DUCT CONNECTION IN ROOM.
- M-11 PROVIDE BALANCING DAMPER AND BALANCE SNORKLE EXHAUST DUCT TO 600 CFM (TYPICAL OF 12).
- M-12 FUME EXTRACTION ARM SIMILAR TO MILLER FILTER 6 IN. X 3 FT. TELESCOPING FUME EXTRACTION ARM WITH WALL MOUNTING KIT FURNISHED BY OWNER - CONTRACTOR INSTALLED (TYPICAL OF 12)
- M-13 GAP OPEN DUCT AFTER DEMOLITION (TYPICAL OF 5).
- M-15 DO NOT BLOCK DOOR OR AIR TRANSFER WITH NEW SUPPLY DUCT. COORDINATE WITH ELECTRICAL CONDUITS AS NEEDED.
- M-16 ROUTE SUPPLY DUCT OVER AIR HANDLER AND PIPING ON MEZZANINE. DO NOT CREATE TRIPPING OR HEAD HEIGHT HAZARD.
- M-17 REMOVE EXISTING EXHAUST DUCT SYSTEM AND ROOF FAN. PROVIDE 18"X22" CAPTURE HOOD OVER COMPRESSOR HOT AIR DISCHARGE. PROVIDE BREAKAWAY CONNECTIONS IN DUCT OVER HOOD WITH CAM LOCKS OR OTHER METHOD TO PROVIDE ACCESS OVER COMPRESSOR.



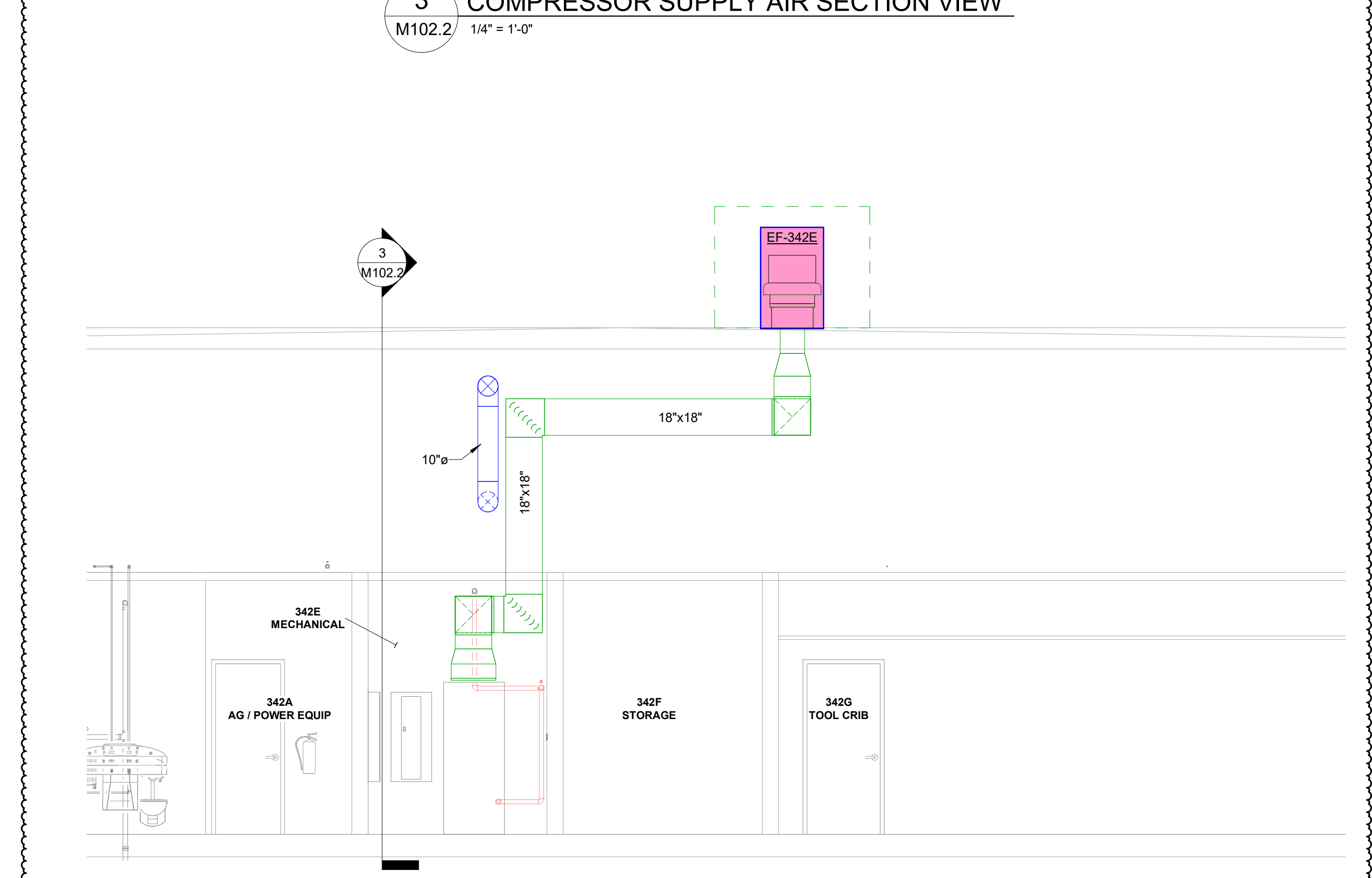
**1 WELDING LAB DUCTWORK PLAN**  
M102.2 1/8" = 1'-0"



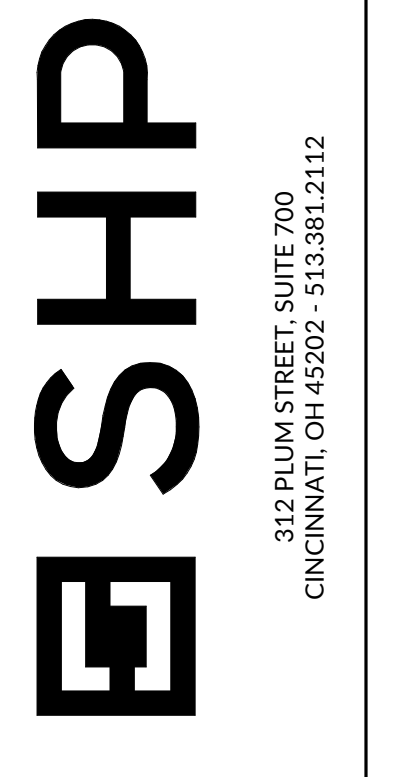
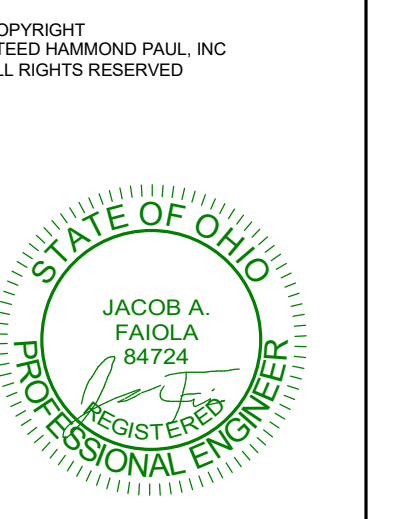
**2 WELDING LAB DUCTWORK DEMO PLAN**  
M102.2 1/8" = 1'-0"



**3 COMPRESSOR SUPPLY AIR SECTION VIEW**  
M102.2 1/4" = 1'-0"



**4 COMPRESSOR EXHAUST AIR SECTION VIEW**  
M102.2 1/4" = 1'-0"



**SOUTHERN HILLS CTC**  
**SOUTHERN HILLS CTC ADDITION & RENO**  
9193 HAMER RD. GEORGETOWN, OH 45121  
**SOUTHERN HILLS JOINT VOCATIONAL SCHOOL DISTRICT**  
9231 HAMER RD. GEORGETOWN OH, 45121

ISSUANCES	
04-26-24	PERMIT/GMP - ADDITIONAL WELDING
4	05-15-24 ADDENDUM P2.1
11	08-02-24 PR-06

**MECHANICAL - WELDING - PHASE 2**

COMM NO. 2023064.01

**M102.2**