

AIR BALANCE SCHEDULE				
TAG	SUPPLY FLOW	RETURN FLOW	EXHAUST FLOW	SUBTOTAL
EF-1	0 CFM	0 CFM	2,550 CFM	-2,550 CFM
EF-2	0 CFM	0 CFM	150 CFM	-150 CFM
MAU-1	1,300 CFM	0 CFM	0 CFM	1,300 CFM
RTU-1	3,400 CFM	2,900 CFM	0 CFM	500 CFM
RTU-2	4,000 CFM	3,000 CFM	0 CFM	1,000 CFM
NET PRESSURIZATION				100 CFM

AIR TERMINAL SCHEDULE

TAG	DESCRIPTION	FACE SIZE	MATERIAL	FINISH	MOUNTING	FURNISHED BY	INSTALLED BY	BASIS FOR DESIGN		NOTES
								MANUFACTURER	MODEL	
CD1	PERFORATED CEILING DIFFUSER	24" X 24"	ALUMINUM	WHITE	LAY-IN CEILING	GC	GC	NAILOR	4320A TYPE L	PROVIDE WITH INTEGRAL OBD
CD2	PERFORATED DIFFUSER WITH DEFLECTORS	24" X 12"	ALUMINUM	WHITE	LAY-IN CEILING	GC	GC	NAILOR	4320A TYPE L	PROVIDE WITH INTEGRAL OBD, REMOVE 4-WAY DEFLECTORS
CD3	PERFORATED CEILING DIFFUSER	12" X 12"	ALUMINUM	WHITE	SURFACE MOUNT	GC	CG	NAILOR	4320A TYPE S	PROVIDE WITH INTEGRAL OBD
ER1	PERFORATED CEILING EXHAUST	12" X 12"	ALUMINUM	WHITE	SURFACE MOUNT	GC	CG	NAILOR	4330R TYPE S	PROVIDE INTEGRAL OBD
RG1	PERFORATED CEILING RETURN	48" X 24"	ALUMINUM	WHITE	LAY-IN CEILING	GC	GC	NAILOR	4330R TYPE L	
RG3	PERFORATED CEILING RETURN	48" X 24"	ALUMINUM	WHITE	SURFACE MOUNT	GC	GC	NAILOR	4330R TYPE S	
SR1	ADJUSTABLE TURBO NOZZLE	SEE NECK SIZE	ALUMINUM	WHITE	WALL	GC	GC	AIR CONCEPTS	ANR-14	PROVIDE WITH CONCEALED MOUNTING AND FACE-ACCESSIBLE OBD
SR2	DOUBLE DEFLECTION SUPPLY REGISTER	SEE NECK SIZE	ALUMINUM	WHITE	WALL	GC	GC	NAILOR	51DH	PROVIDE WITH INTEGRAL OBD

FAN SCHEDULE

TAG	DESCRIPTION	AIRFLOW	ESP	WEIGHT	ELECTRICAL			FURNISHED BY	INSTALLED BY	BASIS FOR DESIGN		REMARKS
					MOTOR POWER	VOLT	PH			MANUFACTURER	MODEL NO.	
EF-1	UPBLAST UL762 EXHAUST FAN	2550 CFM	1.20 in-wg	400 lb	2.00 hp	208 V	3	HS	GC	CAPTIVE-AIRE	DU180HFA	DIRECT DRIVE UL762 EXHAUST FAN FURNISHED WITH WEATHERPROOF DISCONNECT AND VENTED ROOF CURB
EF-2	DOWNBLAST RESTROOM EXHAUST FAN	150 CFM	0.60 in-wg	100 lb	0.25 hp	120 V	1	HS	GC	CAPTIVE-AIRE	DR12HFA	DIRECT DRIVE DOWNBLAST RESTROOM EXHAUST FAN FURNISHED WITH INTEGRAL DISCONNECT, SPEED CONTROL, BACKDRAFT DAMPER, AND CURB

VIROGUARD

TAG	COUNT	DESCRIPTION	DUCT CONNECTION SIZE	FAN	FURNISHED BY	INSTALLED BY	BASIS FOR DESIGN MANUFACTURER
VG-1	1	VIROGUARD HOOD EXHAUST FAN ROOFTOP CONTAINMENT SYSTEM	16X16	CAPTIVE-AIRE DU180HFA	TDC	TDC	ENVIROMATIC

AIR CURTAIN SCHEDULE

TAG	DESCRIPTION	AIRFLOW	WEIGHT	HEATING ELEMENT	MOTOR POWER	V/P/H	FURNISHED BY	INSTALLED BY	MANUFACTURER	Model	REMARKS
AC-2	UNHEATED AIR CURTAIN	1,360 CFM	42 lb	0 kW	0.2 hp	120/1/60	GC	GC	BERNER	SLC07-1048AA	PROVIDE WITH DOOR LIMIT SWITCH AND WALL MOUNTING BRACKETS.

CONDENSING UNIT SCHEDULE

TAG	DESCRIPTION	NUMBER OF		REFRIGERANT		ELECTRICAL			FURNISHED BY	INSTALLED BY	BASIS FOR DESIGN		REMARKS		
		COMPRESSORS	CIRCUITS	TYPE	CHARGE	WEIGHT	MCCP	FLA			VOLT	PH		MANUFACTURER	MODEL NO.
CU-1	CONDENSING UNIT - WALK-IN COOLER	1	1	R-404A	10.40 lb	250 lb	15 A	9 A	208 V	3	WCS	GC	HARFORD	KPCL99MZOP-3E	FURNISHED WITH WALK-IN COOLER
CU-2	REMOTE CONDENSER - LOW CAPACITY ICE MAKER	0	1	R-404A	11.46 lb	100 lb	0 A	0 A	120 V	1	KES	GC	HOSHIZAKI	URC-9F	FURNISHED WITH ICE MAKER
CU-3	REMOTE CONDENSER - SODA MACHINE ICE MAKER	0	1	R-404A	3.86 lb	100 lb	0 A	0 A	120 V	1	KES	GC	HOSHIZAKI	URC-5F	FURNISHED WITH ICE MAKER

MAKEUP AIR UNIT SCHEDULE

TAG	DESCRIPTION	AIRFLOW	ESP	HEATING			ELECTRICAL			FURNISHED BY	INSTALLED BY	BASIS FOR DESIGN		REMARKS	
				INPUT	OUTPUT	EAT(db)	WEIGHT	MOTOR POWER	VOLT			PH	MANUFACTURER		MODEL NO.
MAU-1	DIRECT-FIRED MAKEUP AIR UNIT	1300 CFM	0.50 in-wg	225000 Btu/h	220000 Btu/h	-3.8 °F	650 lb	1.00 hp	208 V	3	HS	GC	CAPTIVE-AIRE	A1-D-250-15D	12.5:1 MAX TURNDOWN. FURNISHED WITH DISCONNECT, ROOF CURB, SCREEN INTAKE, AND WASHABLE ALUMINUM FILTERS

KITCHEN HOOD SCHEDULE

TAG	DESCRIPTION	MAX COOKING TEMP	EXHAUST PLENUM			NO. OF LIGHT FIXTURES			WEIGHT	FURNISHED BY	INSTALLED BY	BASIS FOR DESIGN		REMARKS		
			AIRFLOW	ESP	DUCT COLLARS	NO.	WIDTH	LENGTH				MANUFACTURER	MODEL NO.			
HD-1	TYPE I CANOPY HOOD WITH PERFORATED MAU AND AC SUPPLY PLENUMS	600.0 °F	2550 CFM	0.97 in-wg	1	10"	2'-0"	12'-9"	4'-3"	8	1150 lb	HS	GC	Captive-Aire	5424 ND-2-ACPPS-F	MATL: 18 GA. TYPE430 SS. FURNISHED WITH VERTICAL END PANELS, VAPORPROOF INCANDESCENT LIGHT FIXTURES, 16" TALL HE SS FILTERS, INTEGRAL UTILITY CABINET, KITCHEN EXHAUST SUPPRESSION SYSTEM, DUCT COLLAR TEMPERATURE SENSOR, PREWIRE PACKAGE, SPARE FIRE SYSTEM DRY CONTACT, AND 4-POLE 20A CONTACTOR.

ROOFTOP UNIT SCHEDULE

TAG	DESCRIPTION	NOMINAL CAPACITY	EER	AIRFLOW			NET COOLING CAPACITY				HEATING CAPACITY			NUMBER OF		REFRIGERANT		ELECTRICAL			FURNISHED BY	INSTALLED BY	BASIS FOR DESIGN		REMARKS			
				TOTAL	OA	ESP	TOTAL	SENSIBLE	EAT(db)	EAT(wb)	COND. EAT	INPUT	CAP	EAT(db)	COMPRESSORS	CIRCUITS	TYPE	CHARGE	WEIGHT	MCCP			FLA	VOLT		PH	MANUFACTURER	MODEL NO.
RTU-1	KITCHEN ROOFTOP UNIT	8.5 ton	12	3400 CFM	500 CFM	0.80 in-wg	100100 Btu/h	68600 Btu/h	77.3 °F	64.4 °F	95 °F	180000 Btu/h	144000 Btu/h	58.6 °F	2	2	R-410A	8.1/7.9 lb	1350 lb	60 A	48.3 A	208 V	3	HES	GC	YORK	ZJ102	FURNISHED WITH COMP. ENTHALPY ECON. BAROMETRIC RELIEF, RET. SMOKE DETECTOR W/ REMOTE KEYED ANNUNCIATOR/RESET, M.O.D., MERV-8 FILTERS, CURB, HAIL GUARD, TOOLLESS HINGED ACCESS PANELS, DISCONNECT, & UNIT-MOUNTED CONVENIENCE RECEPTACLE
RTU-2	DINING ROOM ROOFTOP UNIT	10.0 ton	12	4000 CFM	1000 CFM	0.80 in-wg	118100 Btu/h	89300 Btu/h	78.9 °F	65.7 °F	95 °F	240000 Btu/h	192000 Btu/h	50.7 °F	2	2	R-410A	7.8/7.6 lb	1350 lb	60 A	44.9 A	208 V	3	HES	GC	YORK	ZJ120	FURNISHED WITH COMP. ENTHALPY ECON. BAROMETRIC RELIEF, RET. SMOKE DETECTOR W/ REMOTE KEYED ANNUNCIATOR/RESET, M.O.D., MERV-8 FILTERS, CURB, HAIL GUARD, TOOLLESS HINGED ACCESS PANELS, DISCONNECT, & UNIT-MOUNTED CONVENIENCE RECEPTACLE

ASHRAE 62.1 Ventilation Calculations

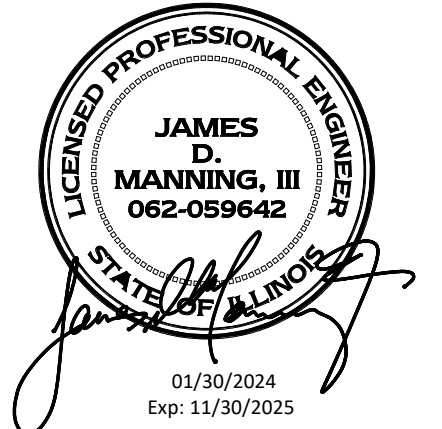
Ventilation Equipment Identity	Location			Occupants or Units	Ventilation Rate Procedure			
	No.	Name	Occupancy Category		Design	Area, Az	Breathing Zone Outdoor Airflow, Voz	Zone Air Effectiveness, Ez
RTU-1	104	POS	Restaurant dining rooms	15.6	224 SF	158 CFM	0.8	197 CFM
RTU-1	106	SERVING	Kitchen (cooking)	2.8	138 SF	37 CFM	0.8	47 CFM
RTU-1	107	COOKING	Kitchen (cooking)	5.6	278 SF	75 CFM	0.8	94 CFM
RTU-1	108	KITCHEN	Kitchen (cooking)	6.4	320 SF	86 CFM	0.8	108 CFM
RTU-1	109	OFFICE	Office space	0.2	44 SF	4 CFM	0.8	5 CFM
RTU-1					1004 SF			450 CFM
RTU-2	100	MAIN ENTRY	Main entry lobbies	0.6	63 SF	7 CFM	0.8	9 CFM
RTU-2	101	DINING	Restaurant dining rooms	36.0	515 SF	363 CFM	0.8	454 CFM
RTU-2	102	UTENSIL	Restaurant dining rooms	2.4	34 SF	24 CFM	0.8	30 CFM
RTU-2	103	PASSAGE	Corridors	0.0	33 SF	2 CFM	0.8	3 CFM
RTU-2	105	ORDERING	Restaurant dining rooms	4.8	69 SF	48 CFM	0.8	61 CFM
RTU-2					714 SF			556 CFM
Grand total: 10					1718 SF			1006 CFM

CONTROL FUNCTIONS

- THE MAIN COOKING EXHAUST FAN AND ROOFTOP HEAP PUMP UNITS SHALL BE INTERLOCKED TO OPERATE TOGETHER. THIS CONTROL CIRCUIT IS ACTIVATED BY A SWITCH AND INCLUDES A FIRE PROTECTION OVERRIDE.
- THE TEMPERATURE IN EACH ZONE IS CONTROLLED BY SPACE TEMPERATURE SENSORS CONNECTED TO THE THERMOSTATS LOCATED IN THE OFFICE. ALL ZONES SHALL OPERATE WITH CONTINUOUS FAN OPERATION DURING OCCUPIED TIMES AND INTERMITTENTLY AS NEEDED TO MAINTAIN SET POINTS DURING UNOCCUPIED TIMES. OUTSIDE AIR DAMPERS SHALL BE OPEN CONTINUOUSLY WHEN EITHER IN OCCUPIED MODE OR WHEN THE HOOD SYSTEM IS ON AND SHALL BE CLOSED DURING UNOCCUPIED PERIODS.
- THE THERMOSTATS SHALL DETERMINE OCCUPIED/UNOCCUPIED STATUS BASED ON THE SCHEDULE IN THE ENERGY MANAGEMENT SYSTEM.

Consultant:

AYRES
MECHANICAL, ELECTRICAL,
PLUMBING (MEP)
1700 West Highway 36 - Suite 700
Roseville, Minnesota 55113
(651) 639-9606 Fax (651) 639-9618
Project No. 81-0606



COPYRIGHT 2024
THIS DRAWING IS AN INSTRUMENT OF SERVICE AND AS SUCH REMAINS THE PROPERTY OF CHIPOTLE MEXICAN GRILL, INC. PERMISSION FOR USE OF THIS DOCUMENT IS LIMITED AND CAN BE EXTENDED ONLY BY WRITTEN AGREEMENT WITH CHIPOTLE MEXICAN GRILL, INC.



CHIPOTLE MEXICAN GRILL, INC.
PO BOX 182566
COLUMBUS, OH 43218-2566
(614) 318-2400
www.chipotle.com

STORE NO.: 5037
"HUNTLEY"
12990 ROUTE 47, LOT 4B
HUNTLEY, IL 60142

Issue Record:

01/30/2024	PERMIT SUBMITTAL
03/15/2024	BID SET
05/03/2024	CONSTRUCTION SET

Revisions:

03/07/24	CITY COMMENTS
05/03/24	CONSTRUCTION

Drawn: _____ Checked: _____

RLD LAO

Project No.

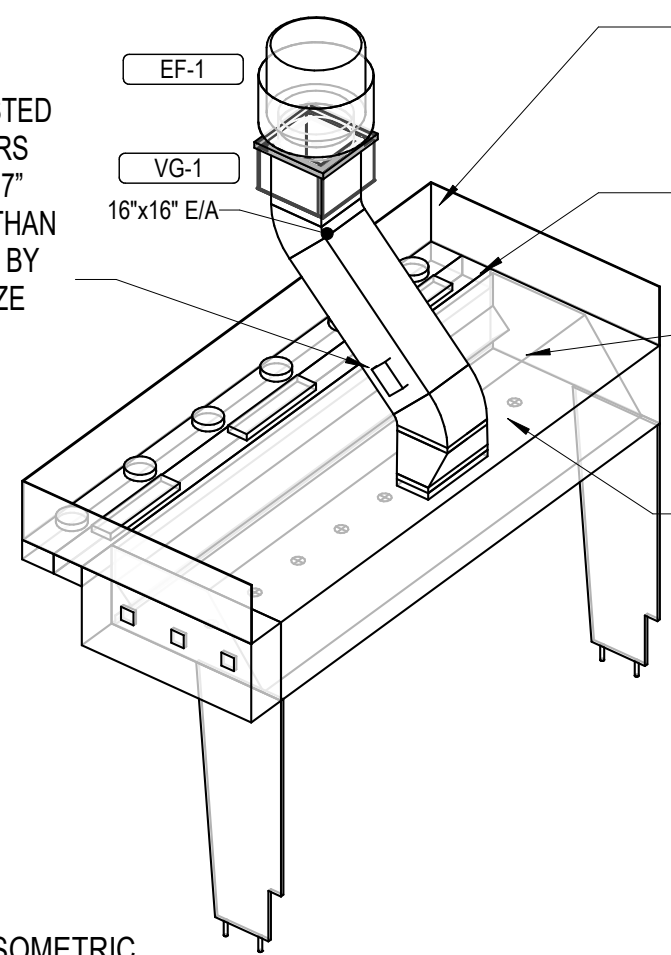
2023-0175

Contents:

HVAC SCHEDULES

M600

GREASE DUCT CLEANOUTS SHALL BE UL-LISTED DUCTMATE PREINSULATED CLEANOUT DOORS MODEL D128ULWSBI FOR DUCTS AT LEAST 17" TALL AND DW128ULWSBI FOR DUCTS LESS THAN 17" TALL. CLEANOUTS SHALL BE FURNISHED BY THE TENANT. COORDINATE NUMBER AND SIZE REQUIRED WITH ENVIROMATIC. INSTALL AS SHOWN IN THE HVAC FLOOR PLAN.



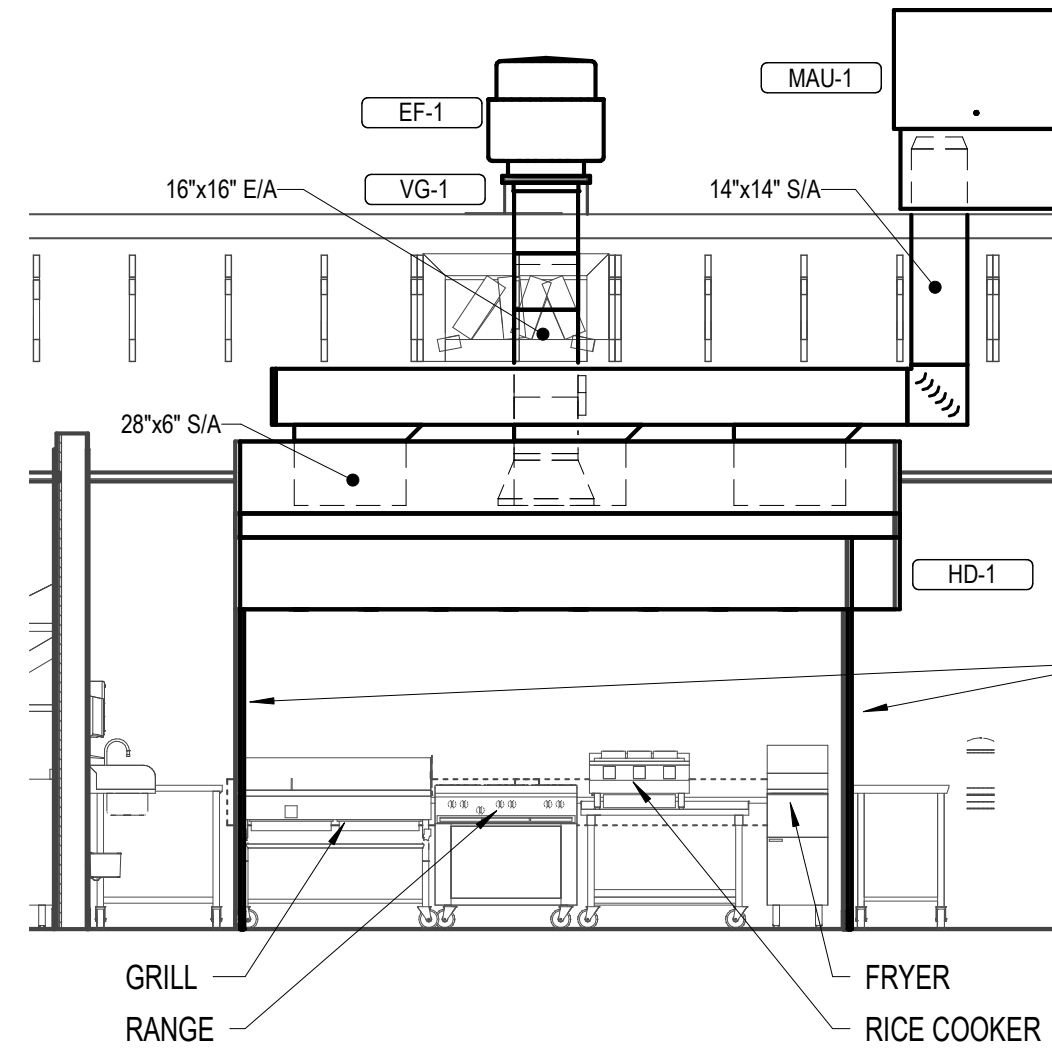
PROVIDE FIRE RESISTANT INSULATION ON TYPE I HOOD EXHAUST DUCT FROM CONNECTION TO HOOD TO CONNECTION TO EXHAUST FAN PER DETAIL 3/M700.

SLOPE HORIZONTAL GREASE DUCT A MINIMUM OF 1/4" PER FOOT DOWN TOWARD THE CONNECTION TO THE HOOD.

PROVIDE RADIUS ELBOWS WITH AN INSIDE RADIUS OF 0.5 X THE DUCT DIMENSION AT ALL CHANGES OF DIRECTION IN THE TYPE I HOOD EXHAUST DUCT.

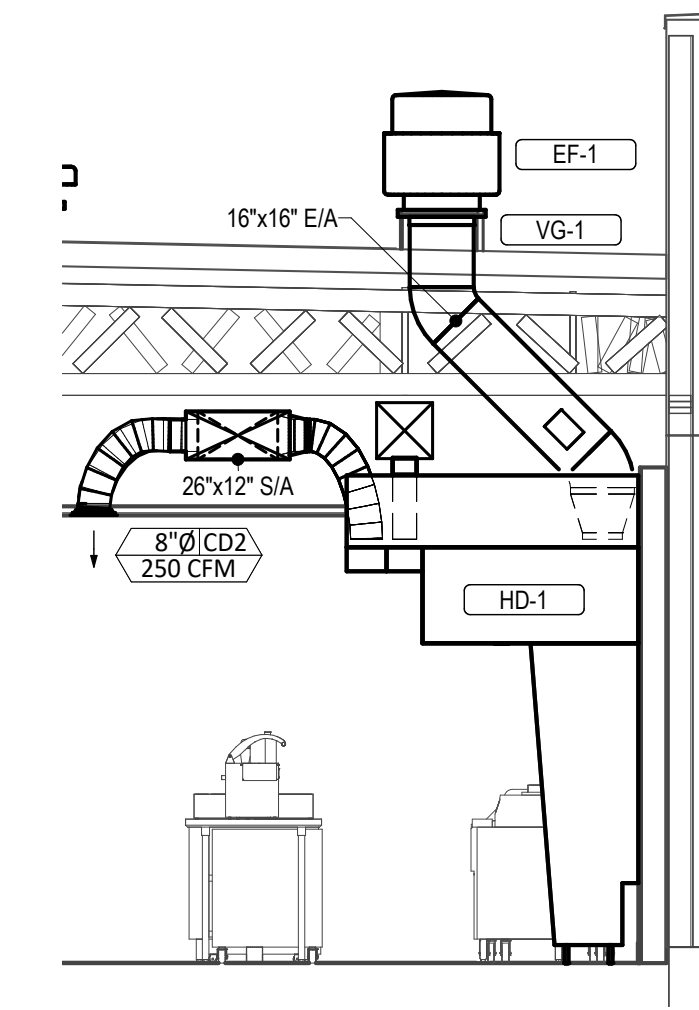
MAINTAIN SYMMETRY IN GREASE EXHAUST DUCT'S TRANSITION TO THE EXHAUST RISER.

9 HOOD EXHAUST ISOMETRIC
M700 NOT TO SCALE

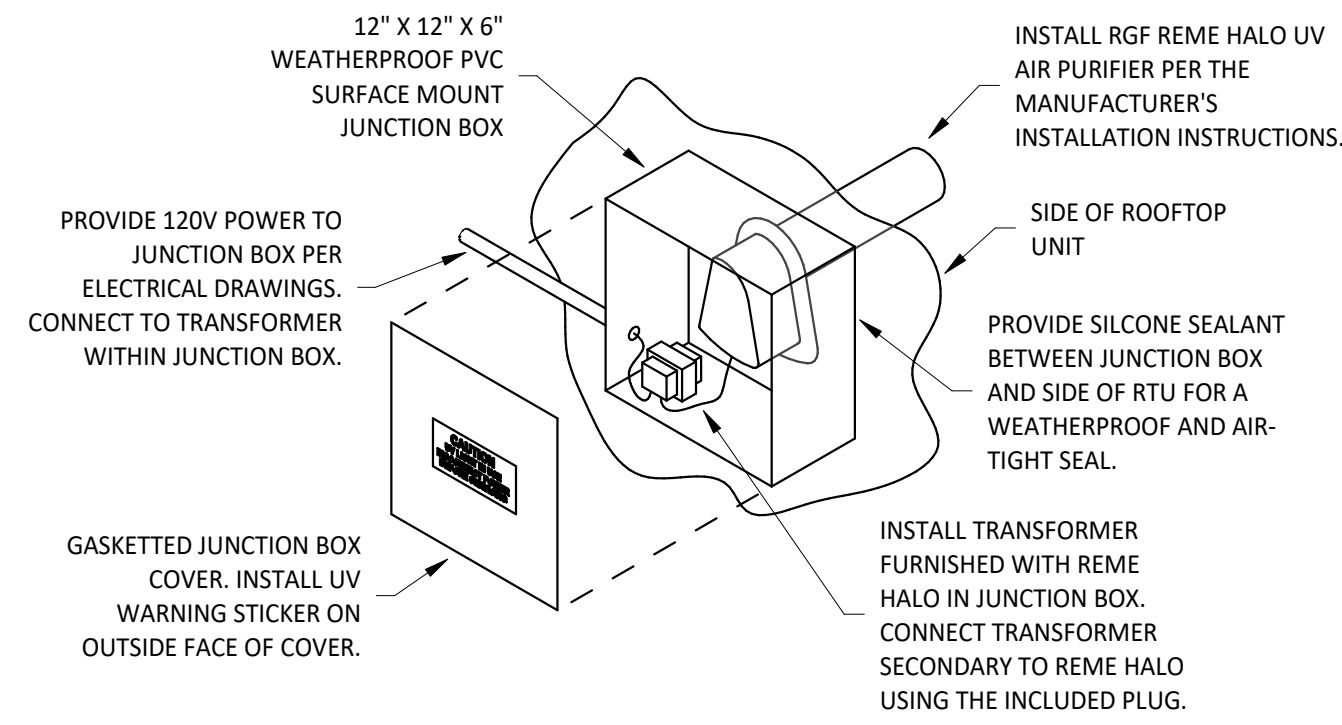


INSTALL VERTICAL END PANELS AT EACH END OF HOOD AS SHOWN. HOOD IS UL-LISTED FOR 0" OVERHANG WHEN USED WITH VERTICAL END PANELS.

8 HOOD ELEVATION
M700 NOT TO SCALE



7 DUCT SECTION AT HOOD
M700 NOT TO SCALE



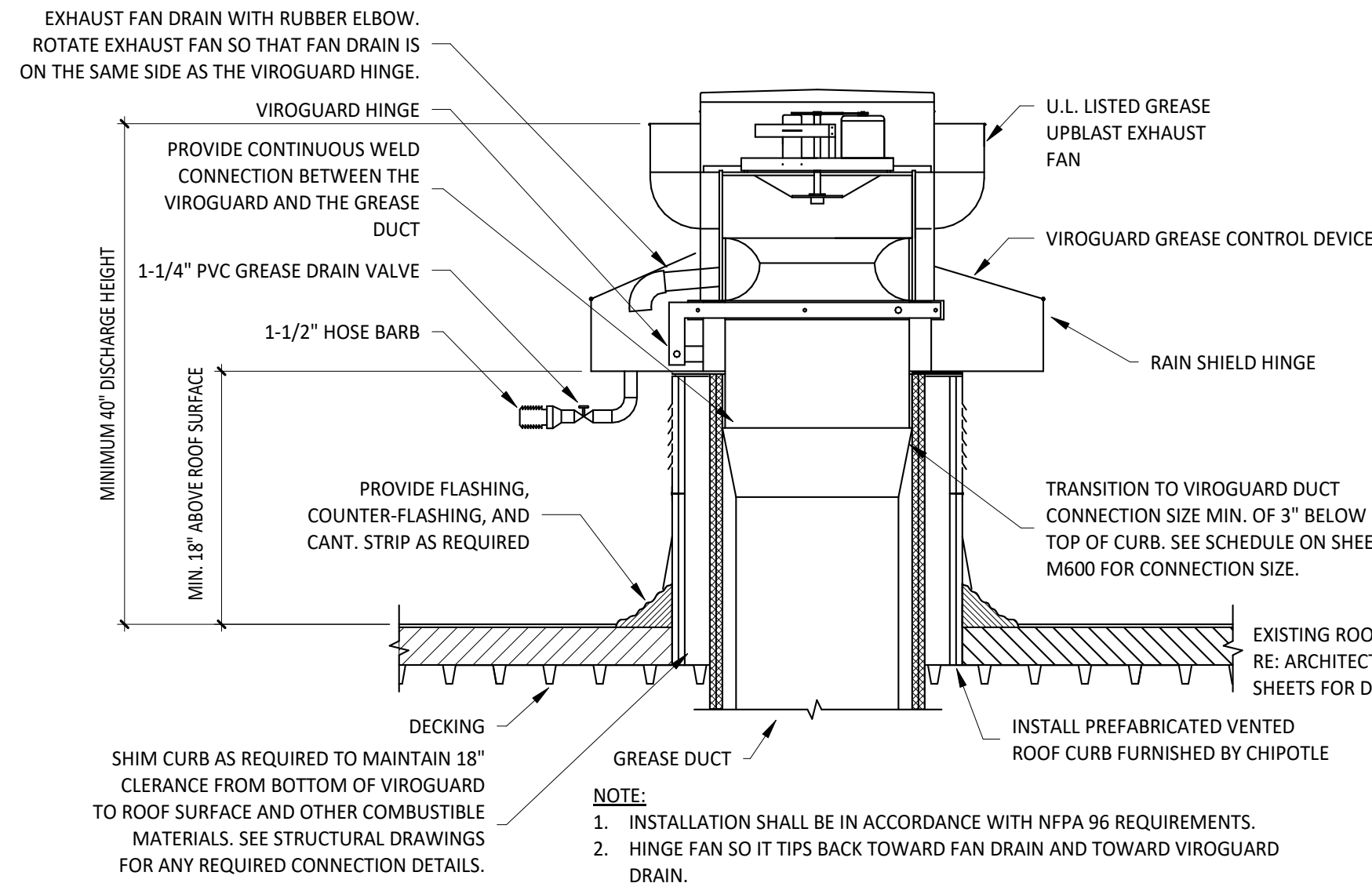
INSTALL RFG REME HALO UV AIR PURIFIER PER THE MANUFACTURER'S INSTALLATION INSTRUCTIONS.

PROVIDE SILICONE SEALANT BETWEEN JUNCTION BOX AND SIDE OF RTU FOR A WEATHERPROOF AND AIR-TIGHT SEAL.

INSTALL TRANSFORMER FURNISHED WITH REME HALO IN JUNCTION BOX. CONNECT TRANSFORMER SECONDARY TO REME HALO USING THE INCLUDED PLUG.

INSTALLATION LOCATION
INSTALL AIR PURIFIER WITH JUNCTION BOX ON OUTSIDE FACE OF ROOFTOP UNIT AND WITH UV LAMP TUBE EXTENDING INTO THE INTERIOR OF THE ROOFTOP UNIT. FIELD VERIFY EXACT LOCATION TO AVOID DAMAGING, TOUCHING, OR INTERFERING WITH ANY RTU INTERIOR COMPONENTS. INSTALLATION LOCATION SHALL BE AS FOLLOWS:
FRAME: INSTALL INTO THE SUPPLY AIR STREAM THROUGH THE REMOVABLE PANEL COVERING THE HORIZONTAL DISCHARGE SUPPLY AIR OPENING.
YORK: INSTALL INTO THE SUPPLY AIR PLENUM FROM THE BACK SIDE OF THE UNIT JUST ABOVE THE HEAT EXCHANGER.

6 UV AIR PURIFIER INSTALLATION
M700 NOT TO SCALE



EXHAUST FAN DRAIN WITH RUBBER ELBOW. ROTATE EXHAUST FAN SO THAT FAN DRAIN IS ON THE SAME SIDE AS THE VIROGUARD HINGE.

PROVIDE CONTINUOUS WELD CONNECTION BETWEEN THE VIROGUARD AND THE GREASE DUCT

1-1/4" PVC GREASE DRAIN VALVE

1-1/2" HOSE BARB

PROVIDE FLASHING, COUNTER-FLASHING, AND CANT. STRIP AS REQUIRED

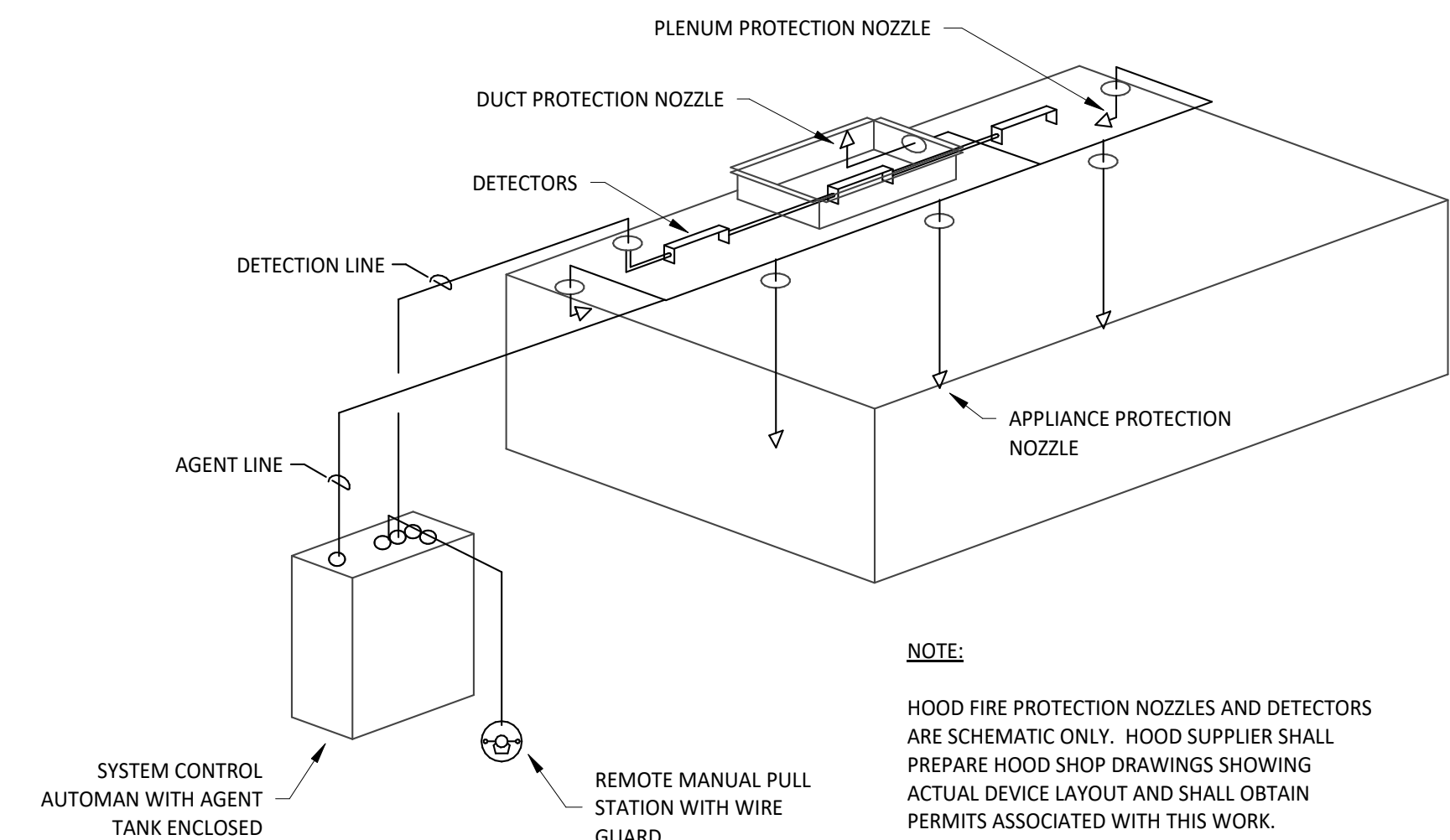
TRANSITION TO VIROGUARD DUCT CONNECTION SIZE MIN. OF 3" BELOW TOP OF CURB. SEE SCHEDULE ON SHEET M600 FOR CONNECTION SIZE.

EXISTING ROOF DECK RE. ARCHITECTURAL SHEETS FOR DETAILS

INSTALL PREFABRICATED VENTED ROOF CURB FURNISHED BY CHIPOTLE

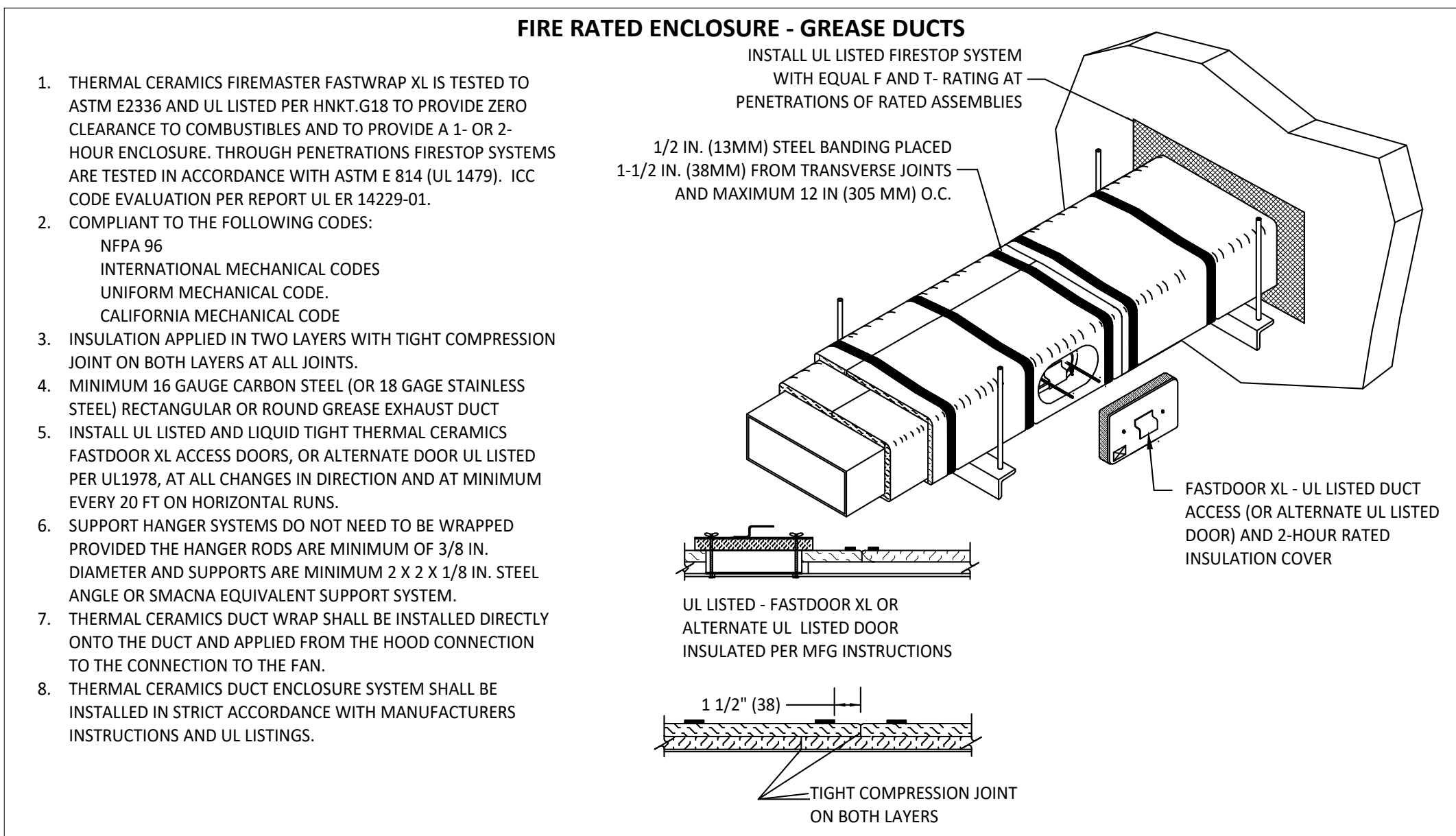
NOTE:
1. INSTALLATION SHALL BE IN ACCORDANCE WITH NFPA 96 REQUIREMENTS.
2. HINGE FAN SO IT TIPS BACK TOWARD FAN DRAIN AND TOWARD VIROGUARD DRAIN.

5 GREASE EXHAUST FAN
M700 NOT TO SCALE



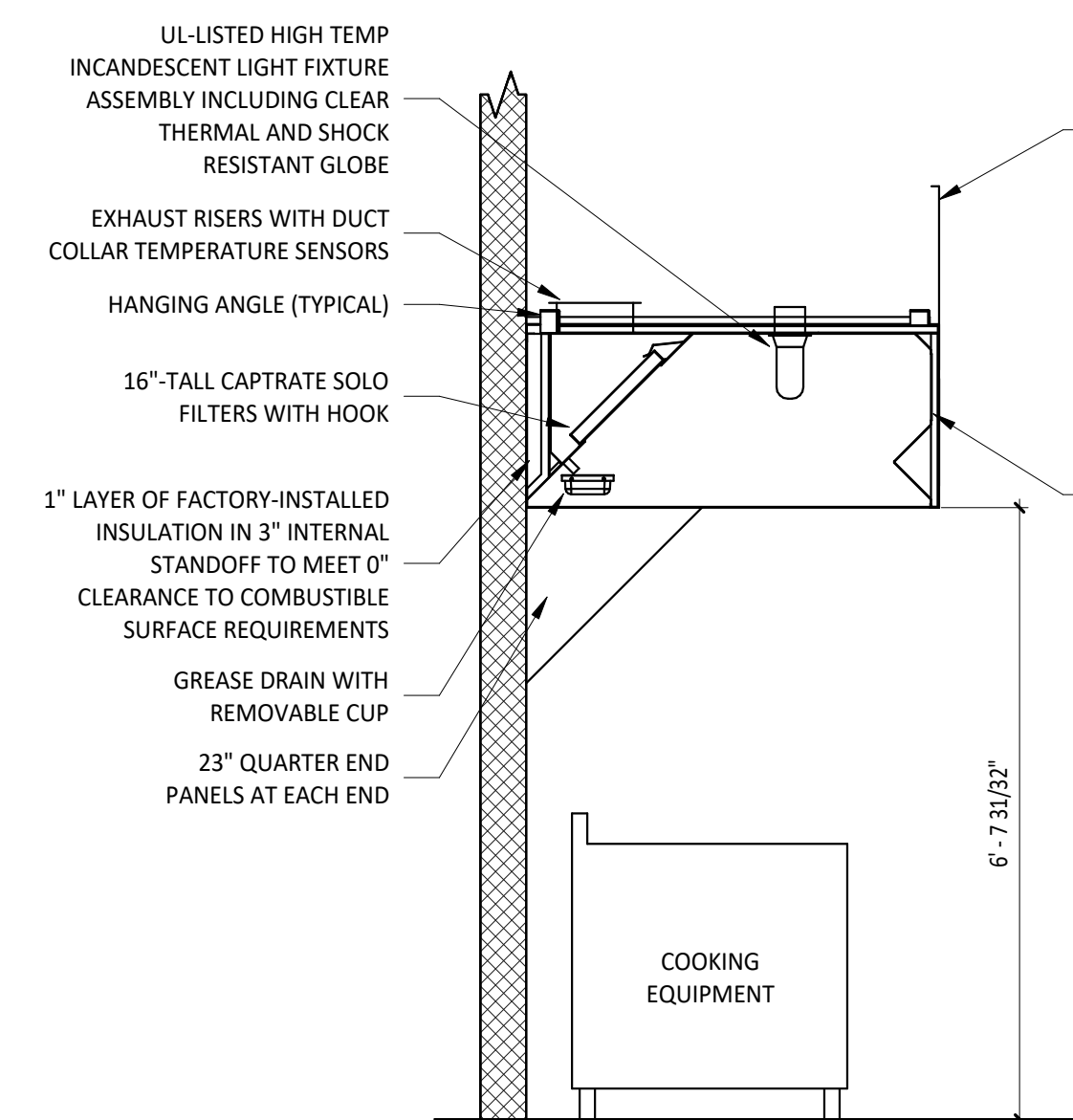
NOTE:
HOOD FIRE PROTECTION NOZZLES AND DETECTORS ARE SCHEMATIC ONLY. HOOD SUPPLIER SHALL PREPARE HOOD SHOP DRAWINGS SHOWING ACTUAL DEVICE LAYOUT AND SHALL OBTAIN PERMITS ASSOCIATED WITH THIS WORK.

4 FIRE SUPPRESSION SYSTEM SCHEMATIC
M700 NOT TO SCALE



1. THERMAL CERAMICS FIREMASTER FASTWRAP XL IS TESTED TO ASTM E2336 AND UL LISTED PER HNK1-G18 TO PROVIDE ZERO CLEARANCE TO COMBUSTIBLES AND TO PROVIDE A 1- OR 2-HOUR ENCLOSURE. THROUGH PENETRATIONS FIRESTOP SYSTEMS ARE TESTED IN ACCORDANCE WITH ASTM E 814 (UL 1479). ICC CODE EVALUATION PER REPORT UL ER 14229-01.
2. COMPLIANT TO THE FOLLOWING CODES:
NFPA 96
INTERNATIONAL MECHANICAL CODES
UNIFORM MECHANICAL CODE
CALIFORNIA MECHANICAL CODE
3. INSULATION APPLIED IN TWO LAYERS WITH TIGHT COMPRESSION JOINT ON BOTH LAYERS AT ALL JOINTS.
4. MINIMUM 16 GAUGE CARBON STEEL (OR 18 GAGE STAINLESS STEEL) RECTANGULAR OR ROUND GREASE EXHAUST DUCT
5. INSTALL UL LISTED AND LIQUID TIGHT THERMAL CERAMICS FASTDOOR XL ACCESS DOORS, OR ALTERNATE DOOR UL LISTED PER UL1978, AT ALL CHANGES IN DIRECTION AND AT MINIMUM EVERY 20 FT ON HORIZONTAL RUNS.
6. SUPPORT HANGER SYSTEMS DO NOT NEED TO BE WRAPPED PROVIDED THE HANGER RODS ARE MINIMUM OF 3/8 IN. DIAMETER AND SUPPORTS ARE MINIMUM 2 X 2 X 1/8 IN. STEEL ANGLE OR SMACNA EQUIVALENT SUPPORT SYSTEM.
7. THERMAL CERAMICS DUCT WRAP SHALL BE INSTALLED DIRECTLY ONTO THE DUCT AND APPLIED FROM THE HOOD CONNECTION TO THE CONNECTION TO THE FAN.
8. THERMAL CERAMICS DUCT ENCLOSURE SYSTEM SHALL BE INSTALLED IN STRICT ACCORDANCE WITH MANUFACTURERS INSTRUCTIONS AND UL LISTINGS.

3 FIREMASTER DUCT WRAP - UL HNK1-G18
M700 NOT TO SCALE



UL-LISTED HIGH TEMP INCANDESCENT LIGHT FIXTURE ASSEMBLY INCLUDING CLEAR THERMAL AND SHOCK RESISTANT GLOBE

ENCLOSURE PANEL TO BE APPROXIMATELY 2" ABOVE FINISHED CEILING. REFER TO ARCHITECTURAL REFLECTED CEILING PLAN FOR CEILING HEIGHT.

CONSTRUCTION OF HOOD SHALL BE PER ILLINOIS MECHANICAL CODE SECTION 507.2 TYPE I HOODS

THE INSIDE EDGE THEREOF SHALL OVERHANG OR EXTEND A HORIZONTAL DISTANCE OF NOT LESS THAN 6 INCHES BEYOND THE EDGE OF THE COOKING SURFACE ON OPEN SIDES, AND THE VERTICAL DISTANCE BETWEEN THE LIP OF THE HOOD AND THE COOKING SURFACE SHALL NOT EXCEED 4 FEET (CMC 508.5)

EXHAUST RISERS WITH DUCT COLLAR TEMPERATURE SENSORS

HANGING ANGLE (TYPICAL)

16"-TALL CAPTRATE SOLO FILTERS WITH HOOK

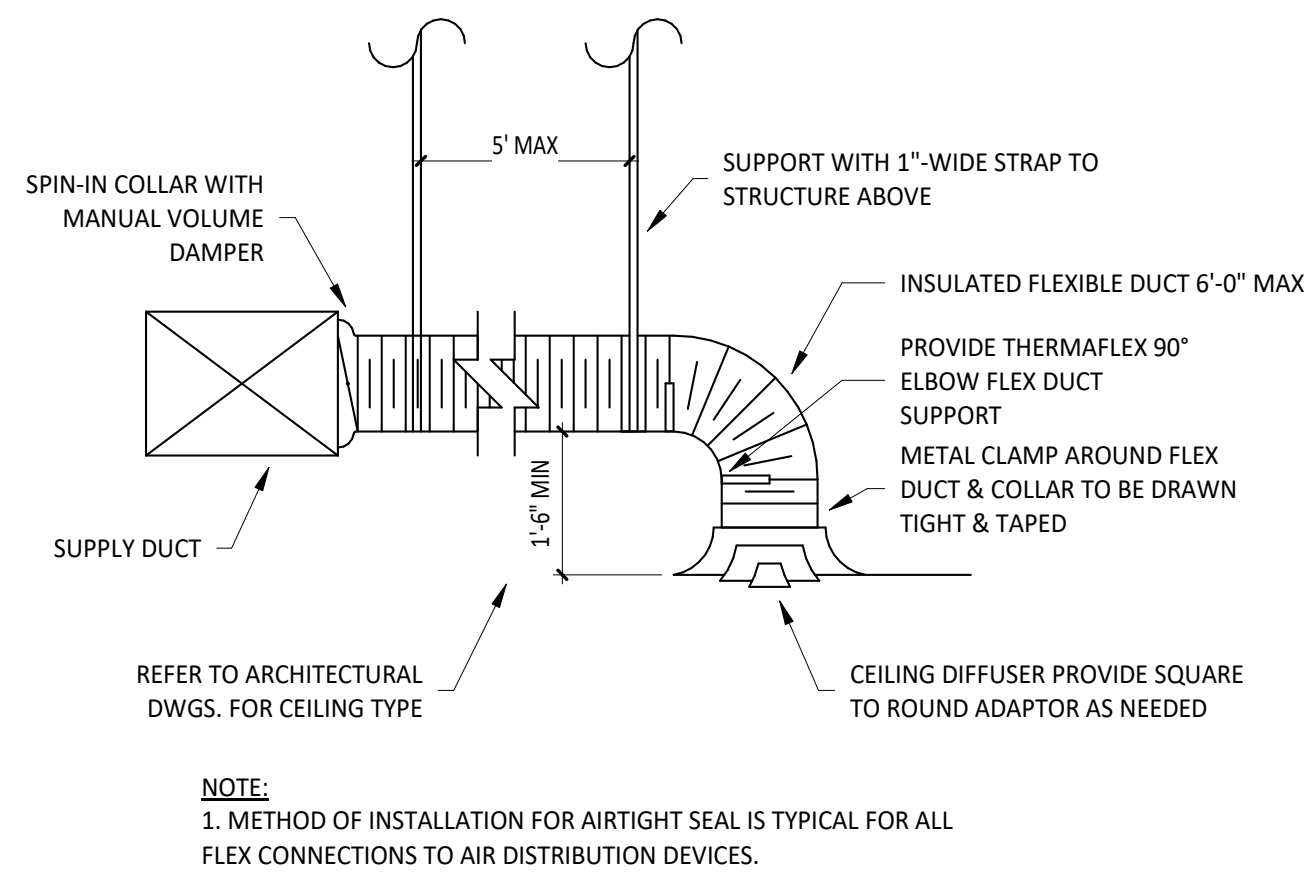
1" LAYER OF FACTORY-INSTALLED INSULATION IN 3" INTERNAL STANDOFF TO MEET 0" CLEARANCE TO COMBUSTIBLE SURFACE REQUIREMENTS

GREASE DRAIN WITH REMOVABLE CUP

23" QUARTER END PANELS AT EACH END

COOKING EQUIPMENT

2 HOOD SECTION VIEW
M700 NOT TO SCALE

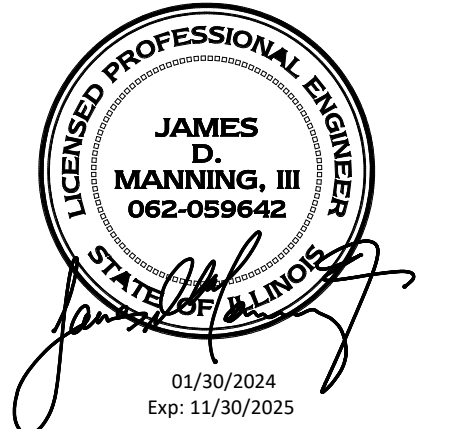


NOTE:
1. METHOD OF INSTALLATION FOR AIRTIGHT SEAL IS TYPICAL FOR ALL FLEX CONNECTIONS TO AIR DISTRIBUTION DEVICES.

1 DIFFUSER CONNECTION
M700 NOT TO SCALE

Consultant:

AYRES
MECHANICAL, ELECTRICAL,
PLUMBING (MEP)
1700 West Highway 36 - Suite 700
Roseville, Minnesota 55113
(651) 639-9606 Fax (651) 639-9618
Project No. 81-0606



COPYRIGHT 2024
THIS DRAWING IS AN INSTRUMENT OF SERVICE AND AS SUCH REMAINS THE PROPERTY OF CHIPOTLE MEXICAN GRILL, INC. PERMISSION FOR USE OF THIS DOCUMENT IS LIMITED AND CAN BE EXTENDED ONLY BY WRITTEN AGREEMENT WITH CHIPOTLE MEXICAN GRILL, INC.



CHIPOTLE MEXICAN GRILL, INC.
PO BOX 182566
COLUMBUS, OH 43218-2566
(614) 318-2400
www.chipotle.com

STORE NO.: 5037

"HUNTLEY"

12990 ROUTE 47, LOT 4B
HUNTLEY, IL 60142

Issue Record:	PERMIT SUBMITTAL
01/30/2024	BID SET
03/15/2024	CONSTRUCTION SET
05/03/2024	

Revisions:

Drawn:	Checked:
RLD	LAO

Project No.
2023-0175

Contents:

HVAC DETAILS

M700