



720 East Pete Rose Way, Suite 140
Cincinnati, OH 45202
T 513.241.4474

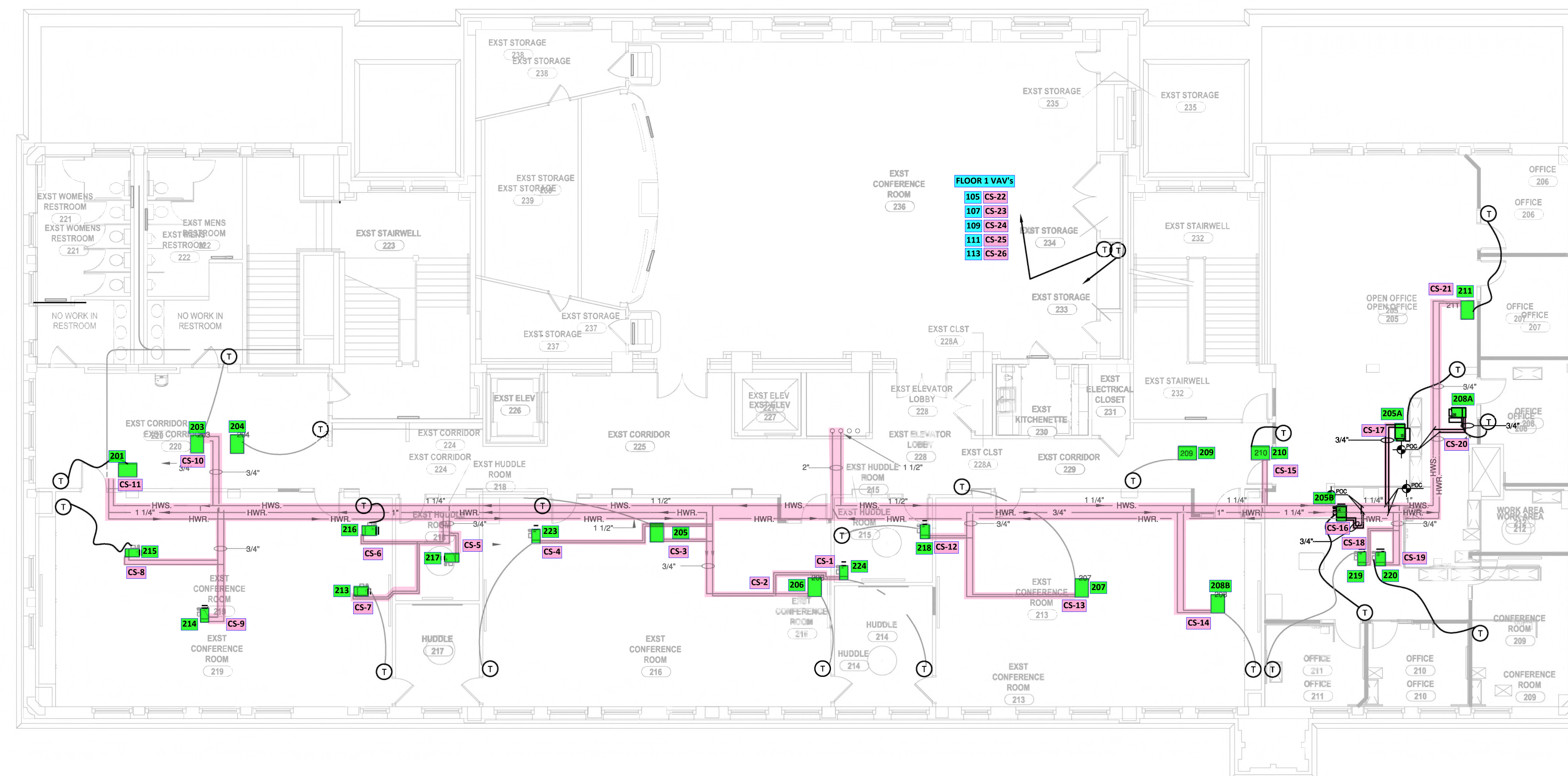
thinkchamplin.com

THINK CREATE REALIZE

KFI
ENGINEERS
525 Vine Street, Suite 1100
Cincinnati, Ohio 45202
Tel: (513) 241-5640 Fax: (866) 604-2390
Email: kfi@kfi-eng.com

GENERAL NOTES

- ALL CONTROLS WIRING AND DEVICES SHALL BE PROVIDED AND INSTALLED BY THE TEMPERATURE CONTROLS CONTRACTOR.
- IN GENERAL, ALL PIPING AND DUCTWORK SHALL BE RUN CONCEALED IN SUSPENDED CEILING SPACES AND IN SHAFTS PROVIDED, UNLESS NOTED OR INDICATED OTHERWISE. CERTAIN ROOMS HAVE NO SUSPENDED CEILINGS. REFER TO ARCH. PLANS FOR CEILING HEIGHTS AND SOFFIT LOCATIONS.
- NOT ALL ACCESS PANELS ARE SHOWN ON THESE DRAWINGS. ACCESS IS REQUIRED TO ALL VALVES, FIRE DAMPERS, MANUAL AND MOTORIZED DAMPERS LOCATED IN CONCEALED SPACES (CEILINGS, WALLS, CHASES AND SOFFITS). ALL ACCESS PANELS SHALL BE PROVIDED BY THIS CONTRACTOR. THIS CONTRACTOR SHALL COORDINATE ALL ACCESS PANEL LOCATIONS WITH THE G.C.
- PROVIDE COORDINATION DRAWINGS FOR FABRICATION OF PIPING AND DUCTWORK. REFER TO SPECIFICATIONS FOR COORDINATION DRAWINGS REQUIREMENTS. DRAWINGS ARE REQUIRED WITH ELEVATIONS FOR ALL AREAS CONGESTED WITH WET AND DRY SIDE EQUIPMENT, SPRINKLER PIPING, DUCTWORK, PLUMBING AND HVAC PIPING. AREAS SHALL INCLUDE EQUIPMENT ROOMS AND CORRIDORS. INCLUDE SPACE ALLOCATION FOR LIGHTING AND CEILING HEIGHTS. USE APPROVED EQUIPMENT SUBMITTALS FOR FINALIZING GENERAL ARRANGEMENTS PRIOR TO SETTING HOUSEKEEPING PADS.
- COOPERATE WITH THE OTHER TRADES TO ELIMINATE ANY CONFLICTS BETWEEN PIPING, DUCTWORK, ELECTRICAL WORK, ETC. THESE DRAWINGS ARE DIAGRAMMATIC. ALL OFFSETS REQUIRED, VERTICAL AND HORIZONTAL, NOT SHOWN ON PLANS SHALL BE INCLUDED IN THIS CONTRACT.
- DIFFUSER, REGISTER AND SPRINKLER HEAD LOCATIONS SHALL BE COORDINATED WITH LIGHT FIXTURE LOCATIONS AND SHALL BE IN ACCORDANCE WITH CEILING PATTERNS WHERE SUSPENDED CEILINGS ARE TO BE PROVIDED AND AS SHOWN ON ARCHITECTURAL REFLECTED CEILING PLANS.
- ON INSULATED DUCTS MOUNT DAMPER QUADRANT REGULATORS ON 2-IN. STAND-OFF MOUNTING BRACKETS, BASES OR ADAPTORS ON DUCTS WITH GREATER THAN 1-10 IN. INSULATION THICKNESS, INCREASE THE STAND-OFF MOUNTING BRACKETS HEIGHT PROPORTIONATELY, AS REQUIRED TO CLEAR THE INSULATION.
- FOR DETAILS, EQUIPMENT CONNECTIONS AND SIZES NOT SHOWN ON FLOOR PLANS, REFER TO ELEVATIONS, DIAGRAMS, DETAILS AND SCHEDULES.
- SEE ARCHITECTURAL CODE SHEETS FOR ALL FIRE RATING DESIGNATIONS. PROVIDE ALL REQUIRED DAMPERS PER INDICATED RATINGS. INCLUDE COMPLETE INSTALLATION OF CONTROLS.
- KEEP OPEN ENDS OF PIPING AND DUCTWORK CAPPED TO PREVENT CONSTRUCTION DUST AND DEBRIS FROM ENTERING.
- WHERE PIPING OR DUCTWORK IS SHOWN CONNECTING TO EXISTING MAINS, EQUIPMENT, ETC., THIS CONTRACTOR SHALL VERIFY EXACT LOCATIONS, SIZES AND SERVICES PRIOR TO MAKING TAP.
- DURING CONSTRUCTION TAKE SPECIAL CARE OF SURROUNDINGS. MOVE FURNITURE, MAKE USE OF DRIP PANS, DROP CLOTHS, ETC. TO PROTECT PROPERTY ON FLOORS IN CONSTRUCTION.
- COORDINATE THE LOCATIONS FOR ALL CORE DRILLING AND WALL CUTTING WITH OTHER TRADES.
- OPENINGS FOR DUCTWORK THROUGH WALLS AND FLOORS SHALL BE NEATLY SAW-CUT WITH A MAXIMUM OVER CUT OF 1" AROUND REQUIRED DUCT OPENINGS. REPAIR ALL AREAS AROUND PENETRATIONS WITH BACK-UP WALL AND FINISH TO MATCH EXISTING. DO NOT REDUCE INSULATION THICKNESS WHERE DUCT PASSES THROUGH OPENINGS IN NON-RATED WALLS.
- OPENINGS FOR PIPING AND ROUND DUCT THROUGH WALLS AND FLOORS SHALL BE NEATLY CORE-DRILLED LARGE ENOUGH FOR INSULATION TO PASS THROUGH, SLEAVED AND GROUDED. PROVIDE FIRE CALKING AND/OR F.S. DAMPERS AT RATED FLOORS AND WALLS.
- REFER TO DETAIL SHEETS FOR PIPE SUPPORT, GUIDES & EXPANSION JOINTS DETAIL.
- REFER TO ALL DETAILS FOR EQUIPMENT INSTALLATION REQUIREMENTS. ALL DETAILS SHALL APPLY IN THESE DOCUMENTS.
- TEST AND AIR BALANCE: ALL NEW AND EXISTING AIR DEVICES (SUPPLY, RETURN, AND EXHAUST), AND AIR TERMINAL UNITS (AIRFLOW AND WATER FLOW) ARE TO BE BALANCED ON THE ENTIRE LEVEL 200. BALANCING TO INCLUDE AIR TERMINAL UNITS LOCATED ON LEVEL 100 THAT SERVE DIFFUSERS ON LEVEL 200.**
- ALL NEW MECHANICAL WORK SHALL BE INSTALLED AT A MINIMUM HEIGHT OF 6'-8" FREE AND CLEAR ABOVE THE TOPSIDE OF FINISHED CEILING COMPONENTS TO THE BOTTOM OF THE LOWEST MECHANICAL COMPONENT, INCLUDING DUCTWORK, PIPING, HANGERS, SUPPORTS AND MOUNTING HARDWARE TO ALLOW ACCESS THROUGH CEILING GRID TILE/ACCESS PANELS. REFER TO ARCHITECTURAL DRAWINGS FOR CORRECT FINISHED CEILING HEIGHTS.



2nd Floor Interior Renovation

Western & Southern Financial Group

421 E. 4th Street
Cincinnati, OH 45202

ISSUANCES

No.	Description	Date
1	DD SET	04.28.2022
2	BID/PERMIT SET	05.20.2022

Drawn By
ES
Checked By
TC
Client No.
5120/2022

Project No.
22-0228

SECOND FLOOR RENOVATION PLAN MECHANICAL PIPING

MP202

