

Report By:

National TAB
1329 E. KEMPER ROAD
SUITE 4210
CINCINNATI, OH 45246



Report: TAB

Function: Test, Adjust, & Balance

Date: 02/24/2026

Completed By: National TAB

PROJECT

Wingstop (Soledad, CA)

2135 H. Dela Rosa Sr Street

Soledad, CA 93960

Client

KMS Resource Group Inc.

8502 E CHAPMAN AVE

SUITE 274

ORANGE, CA 92869

National TAB

Project: Wingstop (Soledad, CA)

Table Of Contents

Section	Page #
AHU/RTU	3
FAN - Exhaust	6
FAN - Supply	10
Kitchen Hood Type I	12

National TAB

Project: Wingstop (Soledad, CA)

System/Unit: AHU/RTU



Asset: RTU-1

AREA:PREP 106

Unit Data		
	Design	Actual
MFG	NA	RHEEM
Serial Num	-	F252400106
Model Num	NA	RGEDZT090ACG15BAA
Configuration	-	VERTICAL
Num OA Filters 1	-	2
OA Filter Size 1	-	19X19
Num PreFilter 1	-	4
PreFilter Size 1	-	20X20X2

Test Data		
	Design	Actual
SF CFM	2475	2659
SF RPM	-	768
RA CFM	1935	2110
OA CFM	540	549
RL Voltage	208	209/209/209
RL Amperage	-	5.48/5.48/5.48
OA Damper Position	-	20%
Brake Horse Power	-	1.82

Motor Data		
	Design	Actual
Motor MFG	-	PROTECH
Frame	-	NL
Horsepower	-	3
Motor Rpm	-	1725
Phase	-	3
Rated Voltage	-	208
Rated Amperage	-	9.0
Service Factor	-	1.15

Performance Data		
	Design	Actual
MA Plenum SP	-	-0.35"
Fan Suction SP	-	-0.57"
Fan Discharge SP	-	0.43"
Total ESP	-	0.78"
Fan Total SP	-	1.00"
Cooling Coil P.D.	-	

Drive Data	
	Actual
Motor Sheave Size	VP50
Motor Bore Size	7/8"
Motor Sheave SetPt	3 TURNS OPEN
Fan Sheave Size	8.25"
Fan Sheave Bore	1"
Belt CL Distance	17"
Num of Belts	1
Belt Size	A50

Completed By: Zack Eismin on 02/24/2026

Notes:

DIFFUSER TOTAL (4000CFM) DOES NOT MATCH DESIGN AIRFLOW (2475CFM). DIFFUSERS ARE BALANCED PROPORTIONALLY TO 2475CFM

Written By: Zack Eismin on 02/24/2026

Unit Data - PHOTO LOG



02/24/2026

National TAB

Project:Wingstop (Soledad, CA)

AHU/RTU



Diffuser Supply (GRD)

RTU-1/PREP 106

Asset							
Asset Name	Location	Type	Size	DESIGN CFM	CFM(1)	FINAL CFM	% to design
1-1	PREP 106	S1	10	245	207	241	98.4
1-2	COOKING 105	S2	8	245	289	253	103.3
1-3	COOKING 105	S2	8	85	147	91	107.1
1-4	COOKING 105	S2	8	85	147	91	107.1
1-5	COOKING 105	S2	8	85	147	91	107.1
1-6	COOKING 105	S2	8	85	147	91	107.1
1-7	COOKING 105	S2	8	85	147	91	107.1
1-8	COOKING 105	S2	8	245	175	263	107.3
1-9	SALES 104	S3	10	260	249	249	95.8
1-10	JANITOR 107	S1	10	245	351	359	146.5
1-11	JANITOR 107	S1	10	245	390	269	109.8
1-12	RR 111	S1	8	75	80	77	102.7
1-13	ORDER 101	S1	10	245	213	247	100.8
1-14	ORDER 101	S1	10	245	318	246	100.4
Total				2475	3007	2659	107.43%

Completed By: Zack Eismen on 02/24/2026

National TAB

Project: Wingstop (Soledad, CA)

System/Unit: FAN - Exhaust



Asset: EF-1

AREA:COOKING 105

Unit Data		
	Design	Actual
MFG	NA	ECON-AIR
Model Num	NA	EADU180H
Serial Num	-	7593133
Type	-	CRE UPBLAST

Motor Data		
	Design	Actual
Motor MFG	-	TECO
Frame	-	184T
Horsepower	-	2
Motor Rpm	-	1165
Phase	-	3
Voltage (rated)	-	230
Amperage (rated)	-	6.56
Service Factor	-	1.15

Test Data		
	Design	Actual
CFM	2700	2733
Motor Frequency	-	53.4HZ
System SetPt	-	53.4HZ
RL Voltage	208	171/171/171
RL Amperage	7.3	5.03/5.03/5.03
Suction ESP	-	-1.13"
Discharge ESP	-	ATM
Total ESP	1.400	1.13"
Brake Horse Power	-	1.51

Completed By: Zack Eismin on 02/24/2026

Unit Data - PHOTO LOG



02/24/2026

National TAB

Project: Wingstop (Soledad, CA)

System/Unit: FAN - Exhaust



Asset: EF-2

AREA:RR 111

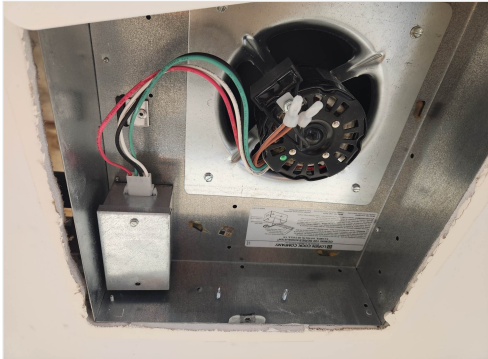
Unit Data		
	Design	Actual
MFG	NA	LAUREN COOK
Model Num	NA	GEMINI 140
Serial Num	-	NL
Type	-	CEILING

Motor Data		
	Design	Actual
Motor MFG	-	QUEACE
Frame	-	NL
Horsepower	-	NL
Motor Rpm	-	1550
Phase	-	1
Voltage (rated)	-	115
Amperage (rated)	-	0.4
Service Factor	-	NL

Test Data		
	Design	Actual
CFM	150	147
Motor Frequency	-	N/A
System SetPt	-	HIGH SPEED
RL Voltage	120	NA
RL Amperage	-	NA
Suction ESP	-	ATM
Discharge ESP	-	0.21"
Total ESP	0.125	0.21"
Brake Horse Power	-	N/A

Completed By: Zack Eismin on 02/24/2026

Unit Data - PHOTO LOG



02/24/2026

National TAB

Project: Wingstop (Soledad, CA)

System/Unit: FAN - Supply



Asset: MAU-1

AREA: COOKING 105

Unit Data		
	Design	Actual
MFG	NA	CAPTIVE AIRE
Model Num	NA	EA-A1-15D
Serial Num	-	7593133
Type	-	MAU
Configuration	-	VERTICAL

Motor Data		
	Design	Actual
Motor MFG	-	TECO
Frame	-	145T
Horsepower	-	1.5
Motor Rpm	-	1740
Phase	-	3
Voltage (rated)	-	230
Amperage (rated)	-	4.02
Service Factor	-	1.15

Gas Heat		
	Design	Actual
Heater Operates (y/n)	-	N/A
Flame Status (pass/fail)	-	N/A
Inlet Air Temp SetPt	-	N/A
Discharge Air Temp SetPt	-	N/A
Air Flow Switch SP Actual	-	N/A

Test Data		
	Design	Actual
CFM	2360	2321
SF RPM	1983	1827
Motor RPM	-	1827
SF System SetPt	-	63HZ
RL Voltage	208	203/203/203
RL Amperage	4.4	3.58/3.58/3.58
Total ESP	-	NA
Fan Discharge SP	-	NA

General	
	Actual
Fan Rotation Correct	YES

Completed By: Zack Eismin on 02/24/2026

Unit Data - PHOTO LOG



02/24/2026

National TAB

Project: Wingstop (Soledad, CA)

System/Unit: Kitchen Hood Type I



Asset: HD1

AREA:

Unit Data		
	Design	Actual
MFG	ECON-AIR	ECON-AIR
Model Num	5430EX-2	5430EX-2
Job / Serial Num	-	7593133
Type	-	TYPE I CANOPY
Hood length	-	144"
Hood Width	-	54"
Supply Plenum Type	-	PERFORATED
Supply Plenum Width	-	14"
Supply Plenum Length	-	156"

Test Data Exhaust		
	Design	Actual
Filter Type	-	CAPTRATE SOLO
Filter Size 1	-	16X20
Filter Size 2	-	
Filter Qty 1	-	9
Filter Qty 2	-	
Filter AK factor size 1	-	2.08
Filters AK factor size 2	-	
Filter Total AK Area	-	18.72
Filter1 FPM	-	128
Filter2 FPM	-	131
Filter3 FPM	-	138
Filter4 FPM	-	158
Filter5 FPM	-	154
Filter6 FPM	-	164
Filter7 FPM	-	153
Filter8 FPM	-	153
Filter9 FPM	-	139
Filter10 FPM	-	
Filter11 FPM	-	
Filter12 FPM	-	
Filter Ave FPM(corr)	-	147
CFM	2700	2733

Cooking Equipment	
	Actual
Item 1	FRYERS
Item 2	
Item 3	
Item 4	
Item 5	

Test Data Supply		
	Design	Actual
Total Area	-	15.167
Kv factor (Vel)	-	0.89
Num of Readings	-	12
Reading1 FPM	-	202
Reading2 FPM	-	176
Reading3 FPM	-	160
Reading4 FPM	-	217
Reading5 FPM	-	193
Reading6 FPM	-	140
Reading7 FPM	-	140
Reading8 FPM	-	175
Reading9 FPM	-	188
Reading10 FPM	-	156
Reading11 FPM	-	161
Reading12 FPM	-	163
Reading13 FPM	-	
Reading14 FPM	-	
Ave FPM(corr)	-	172
CFM	2360	2321

Completed By: Zack Eismin on 02/24/2026

Unit Data - PHOTO LOG



02/24/2026