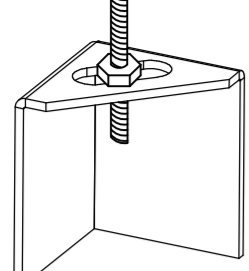


ND-2 HANGING ANGLE DETAIL

1/2" DIA. ALL THREAD ROD CONNECTED TO ROOF JOIST THROUGH ANOTHER HANGING ANGLE
 1/2" DIA. HEAVY DUTY NUT ONE ABOVE AND ONE BELOW HANGING ANGLE



*ROD AND NUTS TO BE SUPPLIED BY INSTALLING CONTRACTOR HANGING ANGLE IS PRE-FINISHED AT FACTORY

HANGING ANGLE LOCATIONS

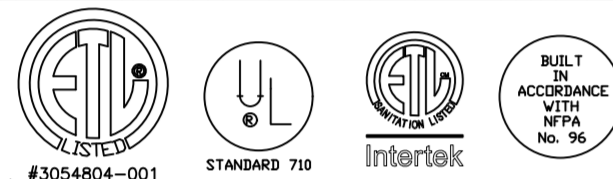
HOOD STYLE	DIM FROM REAR	DIM FROM FRONT (24" H)	DIM FROM FRONT (30" H)
CANOPY ND2	4.166"	2.246"	2.246"
ND2-PSP-F	4.166"	2.246"	2.246"
BACKSHELF BD-2	4.166"	2.246"	-
VHB/VHB-G	36"x36"	42"x42"	48"x48"
FRONT/BACK DIMS BY SIZE	2.246"	2.246"	2.246"

CALCULATIONS UTILIZED

EXHAUST CFM=LENGTH OF HOOD X CFM/LIN.FT. (LOAD)
 SUPPLY CFM=EXHAUST CFM X PERCENTAGE REQUIRED
 TOTAL DUCT AREA=144 X $\frac{CFM}{FPM}$
 DUCT LENGTH= $\frac{TOTAL DUCT AREA}{DUCT DEPTH}$
 *CAPTIVE-AIRE DUCT CONNECTION SIZES ARE CALCULATED USING AN EXHAUST VELOCITY OF 1500-1800 FPM AND A SUPPLY VELOCITY OF 300-400 FPM

BUILDING CODES

CAPTIVE-AIRE HOODS ARE BUILT IN COMPLIANCE WITH:



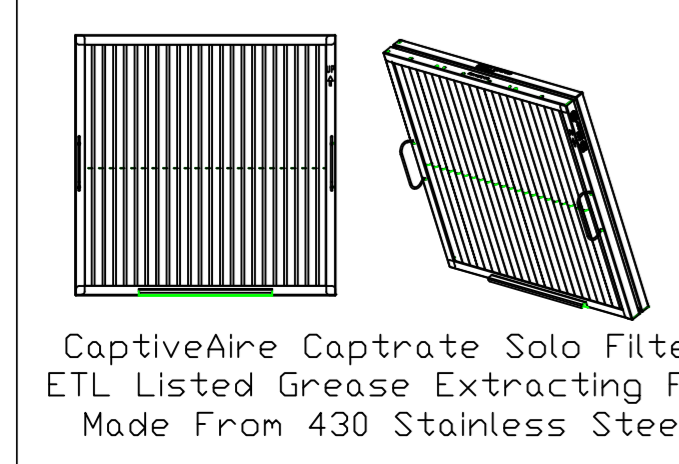
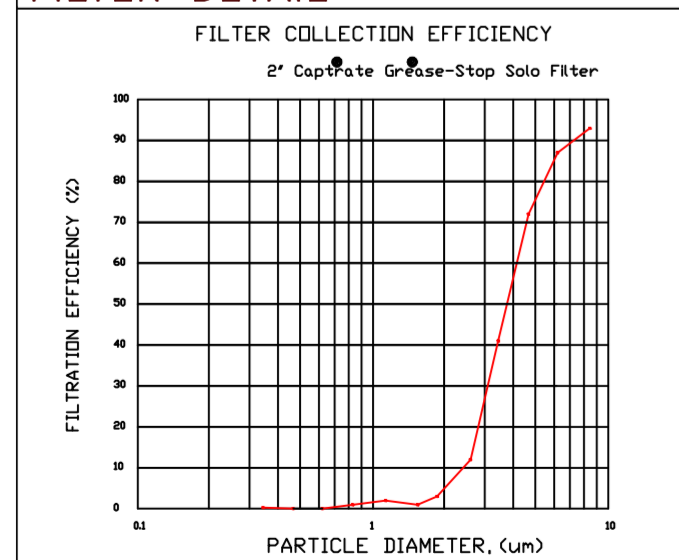
CLEARANCE TO COMBUSTIBLES

CAPTIVE-AIRE HOODS HAVE OPTIONAL CLEARANCE REDUCTION SYSTEMS AVAILABLE AS FOLLOWS:
MATERIAL CLEARANCE REDUCTION SYSTEM
 NON-COMBUSTIBLE NONE REQUIRED
 LIMITED-COMBUSTIBLE 3" UNINSULATED STANDOFF
 COMBUSTIBLE 1" INSULATED STANDOFF

GENERAL NOTES

- INSTALLATION**
1. ALL ELECTRICAL "FIELD" CONNECTIONS AND RELATED INTERCONNECTIONS BY ELECTRICAL CONTRACTORS.
 2. ALL PLUMBING "FIELD" CONNECTIONS AND RELATED INTERCONNECTIONS BY PLUMBING CONTRACTORS.
 3. HANGING BRACKETS LOCATED AND WELDED AS SHOWN ON PLANS. ALL OTHER HANGER MATERIALS PROVIDED BY INSTALLING CONTRACTORS.
 4. ALL CONNECTIONS FROM CAPTIVE-AIRE DUCT PER MECHANICAL CONTRACTORS' PLANS.
 5. COOKING EQUIPMENT TO SHUTOFF IN EVENT OF FIRE.
 6. EXHAUST FANS TO TURN ON IN EVENT OF FIRE.
 7. ALL LIGHTS FIXTURE SHOWN INSTALLED BY CAPTIVE-AIRE ARE FACTORY PREWIRED. INTERCONNECTIONS BETWEEN HOODS AND TO SWITCHES BY ELECTRICAL CONTRACTORS.
 8. LAMPS FOR LIGHT FIXTURES BY INSTALLING CONTRACTORS.
 9. SEISMIC RESTRAINTS ARE RESPONSIBILITY OF INSTALLING CONTRACTOR.
 10. INSTALLING CONTRACTORS ASSUME ALL RELATED RESPONSIBILITY FOR VERIFICATION OF DIMENSIONAL DATA CONTAINED ON THESE DOCUMENTS FOR ACCURACY, INTEGRATION, AND ADMINISTRATION OF CODE REQUIREMENTS IN EFFECT PRIOR TO ANY RELEASE FOR PRODUCTION OF EQUIPMENT SHOWN.
- BALANCE**
11. KITCHEN HOODS MUST BE BALANCED WITH KITCHEN.
 12. KITCHEN SHALL BE NEGATIVE WITH RESPECT TO DINING AREA.
 13. RESTAURANT SHALL BE POSITIVE WITH RESPECT TO AMBIENT PRESSURE.
- ADDITIONAL**
14. WRITTEN HOOD DIMENSIONS HAVE PRECEDENCE OVER SCALE.
 15. SIGNED AND "APPROVED" COPIES OF THIS DOCUMENT MUST BE RECEIVED BY THE FACTORY PRIOR TO COMMENCEMENT OF FABRICATION.

FILTER DETAIL



HOOD INFORMATION - JOB#5448899

HOOD NO	TAG	MODEL	MANUFACTURER	LENGTH	MAX COOKING TEMP	TYPE	APPLIANCE DUTY	DESIGN CFM/FT	TOTAL EXH CFM	EXHAUST PLENUM RISER(S)				HOOD CONSTRUCTION	HOOD CONFIG		
										WIDTH	LENG	HEIGHT	DIA		CFM	VEL	SP
1	Item 52	5424 ND-2	CAPTIVEAIRE	12' 11"	450 DEG	I	MEDIUM	225	2910	4"	12'	1455	1853	-0.988"	430 SS WHERE EXPOSED	RIGHT	BACK
2	Item 53	5424 ND-2	CAPTIVEAIRE	7' 5"	450 DEG	I	MEDIUM	150	1115	4"	10'	1115	2044	-0.860"	430 SS WHERE EXPOSED	LEFT	BACK
3	Item 75	5424 VHB-ND	CAPTIVEAIRE	13' 6"	700 DEG	II	N/A	150	2025	4"	12'	1012	1289	-0.133"	430 SS 100%	ALONE	FRONT

HOOD INFORMATION

HOOD NO	TAG	FILTER(S)				LIGHT(S)				UTILITY CABINET(S)				FIRE SYSTEM PIPING	HOOD HANGING WEIGHT	
		TYPE	QTY	HEIGHT	LENGTH	EFFICIENCY @ 7 MICRONS	QTY	TYPE	WIRE GUARD	LOCATION	SIZE	FIRE SYSTEM	ELECTRICAL			SWITCHES
1	Item 52	CAPTRATE SOLO FILTER	9	16'	16'	85% SEE FILTER SPEC	4	RECESSED ROUND	NO						NO	614 LBS
2	Item 53	CAPTRATE SOLO FILTER	5	16'	16'	85% SEE FILTER SPEC	2	RECESSED ROUND	NO						NO	432 LBS
3	Item 75		4				4	RECESSED ROUND	NO	LEFT	12"x54"x24"		DCV-2011_MA4	1 LIGHT 1 FAN	NO	574 LBS

HOOD OPTIONS

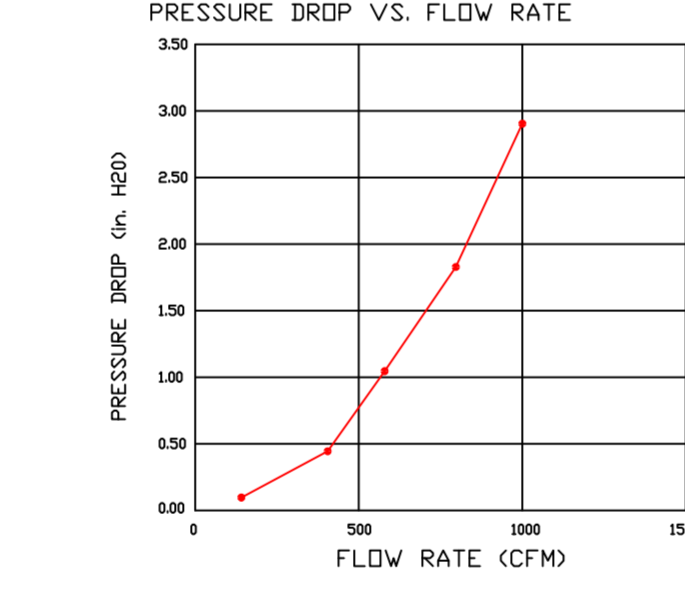
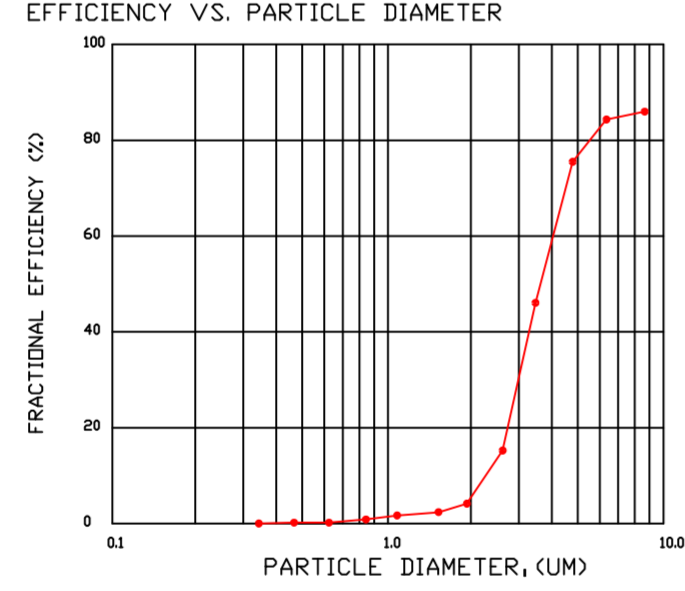
HOOD NO	TAG	OPTION
1	Item 52	FIELD WRAPPER 18.00' HIGH FRONT, RIGHT. BALANCE DAMPERS. RISER SENSOR INSTALL 6IN PLEN. RIGHT VERTICAL END PANEL 27" TOP WIDTH, 21" BOTTOM WIDTH, 80" HIGH INSULATED 430 SS.
2	Item 53	FIELD WRAPPER 18.00' HIGH FRONT, LEFT. BALANCE DAMPERS. RISER SENSOR INSTALL 6IN PLEN. LEFT WIDE VERTICAL END PANEL 42" TOP WIDTH, 36" BOTTOM WIDTH, 80" HIGH INSULATED 430 SS.
3	Item 75	FIELD WRAPPER 18.00' HIGH FRONT, LEFT, RIGHT. RIGHT QUARTER END PANEL 23" TOP WIDTH, 0" BOTTOM WIDTH, 23" HIGH 430 SS. LEFT QUARTER END PANEL 23" TOP WIDTH, 0" BOTTOM WIDTH, 23" HIGH 430 SS. RISER SENSOR INSTALL 3IN DBL.

SPECIFICATION: CAPTRATE GREASE-STOP SOLO FILTER

THE CAPTRATE GREASE-STOP SOLO FILTER IS A SINGLE-STAGE FILTER FEATURING A UNIQUE S-Baffle DESIGN IN CONJUNCTION WITH A SLOTTED REAR Baffle DESIGN, TO DELIVER EXCEPTIONAL FILTRATION EFFICIENCY.

FILTER IS STAINLESS STEEL CONSTRUCTION, AND SIZED TO FIT INTO STANDARD 2-INCH DEEP HOOD CHANNEL(S).
 UNITS SHALL INCLUDE STAINLESS STEEL HANDLES AND A FASTENING DEVICE TO SECURE THE TWO COMPONENTS WHEN ASSEMBLED.

GREASE EXTRACTION EFFICIENCY PERFORMANCE SHALL REMOVE AT LEAST 75% OF GREASE PARTICLES FIVE MICRONS IN SIZE, AND 85% GREASE PARTICLES SEVEN MICRONS IN SIZE AND LARGER, WITH A CORRESPONDING PRESSURE DROP NOT TO EXCEED 1.0 INCHES OF WATER GAUGE. THE CAPTRATE GREASE-STOP SOLO WAS TESTED TO ASTM STANDARD ASTM F2519-05. MANUFACTURER APPROVED FOR USE IN SOLID FUEL APPLICATIONS AS A SPARK ARRESTER.



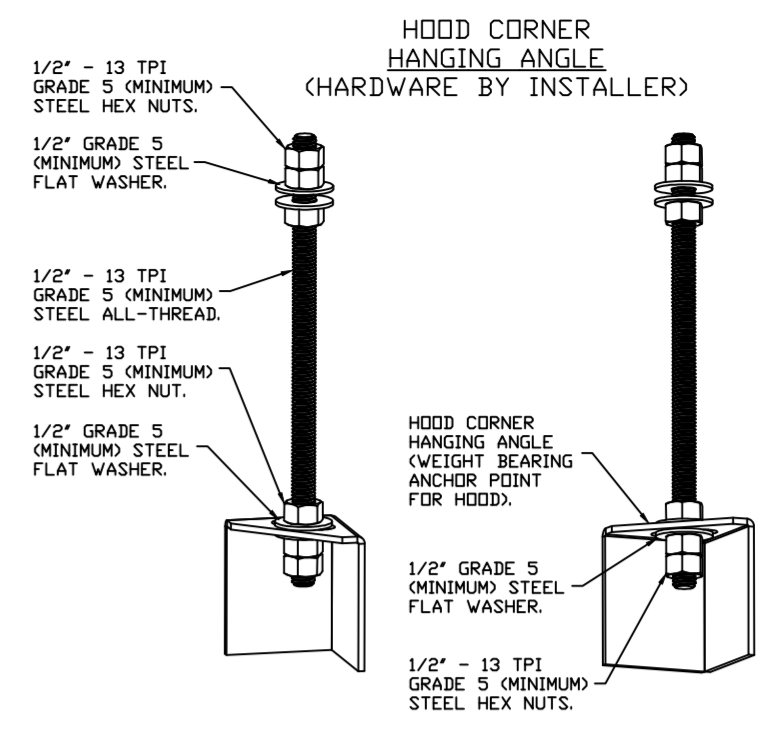
CAPTRATE FILTERS ARE BUILT IN COMPLIANCE WITH:

- NSF #96
- NSF STANDARD #2
- UL STANDARD #1046
- INT. MECH. CODE (IMC)
- ULC-S649.



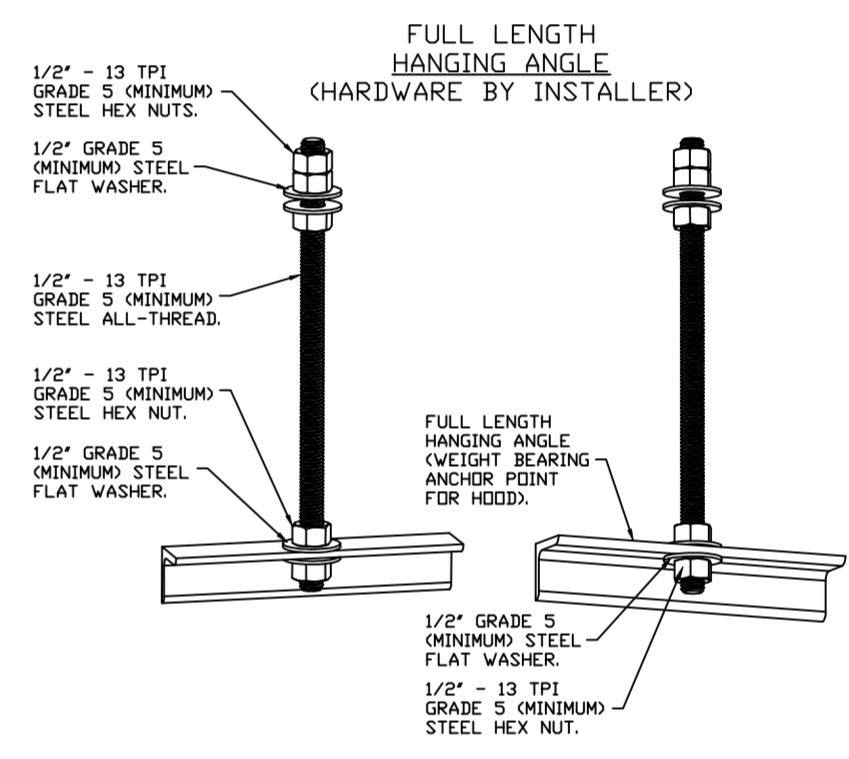
PATENT NUMBERS

EXHAUST HOODS ND-2/BD-2/SND-2 (CANADA) - CA PATENT 2520435 C.



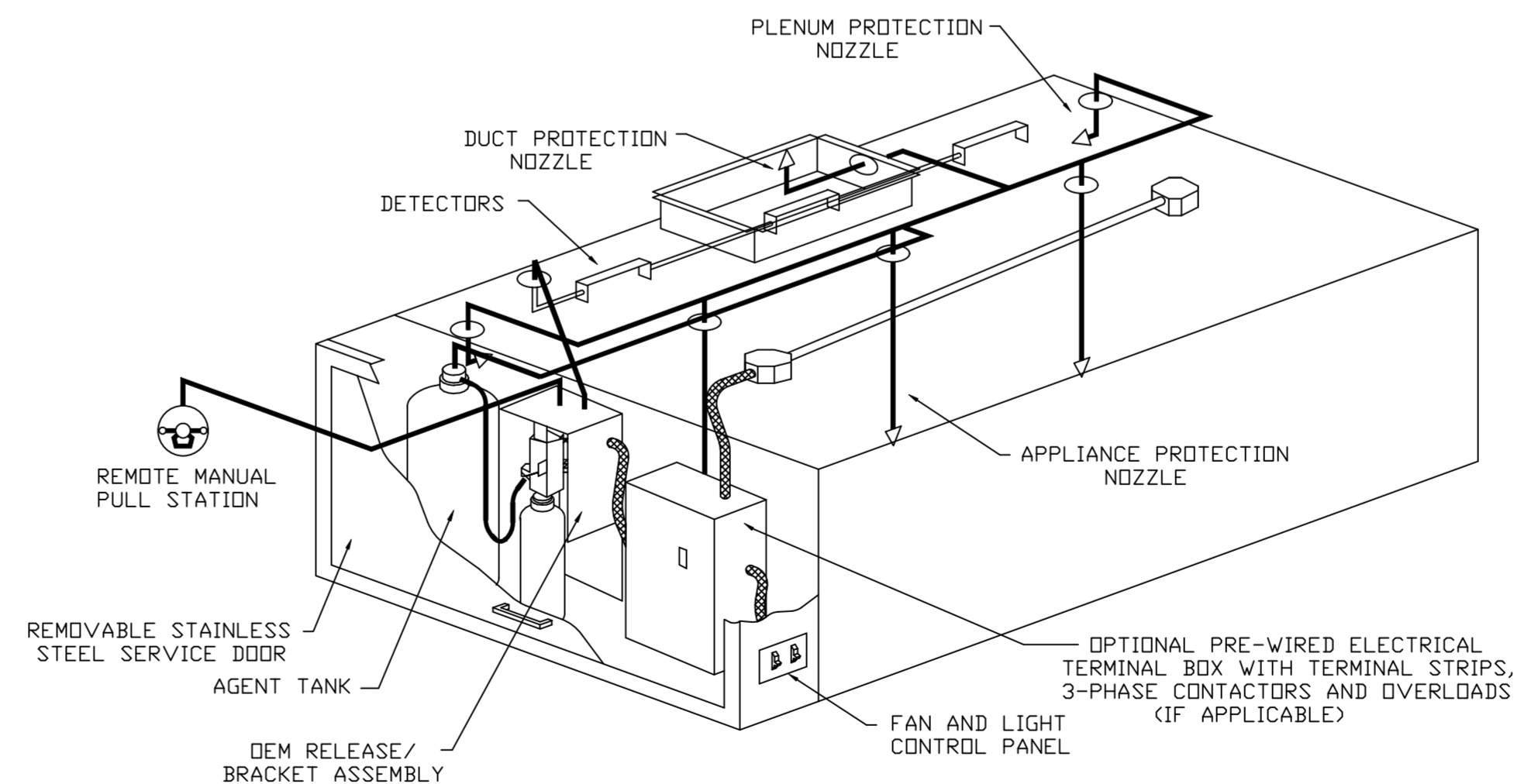
ASSEMBLY INSTRUCTIONS

HANGING ANGLE MUST BE SUPPORTED WITH 1/2" - 13 TPI GRADE 5 (MINIMUM) ALL-THREAD. SANDWICH HANGING ANGLES AND CEILING ANCHOR POINTS WITH 1/2" GRADE 5 (MINIMUM) STEEL FLAT WASHERS AND 1/2" - 13 TPI GRADE 5 (MINIMUM) HEX NUTS AS SHOWN. MUST USE DOUBLED HEX NUT CONFIGURATION BENEATH HOOD HANGING ANGLES AND ABOVE CEILING ANCHORS. MAINTAIN 1/4" OF EXPOSED THREADS BENEATH BOTTOM HEX NUT. TORQUE ALL HEX NUTS TO 57 FT-LBS.



ASSEMBLY INSTRUCTIONS

HANGING ANGLE MUST BE SUPPORTED WITH 1/2" - 13 TPI GRADE 5 (MINIMUM) ALL-THREAD. SANDWICH HANGING ANGLES AND CEILING ANCHOR POINTS WITH 1/2" GRADE 5 (MINIMUM) STEEL FLAT WASHERS AND 1/2" - 13 TPI GRADE 5 (MINIMUM) HEX NUTS AS SHOWN. MUST USE DOUBLED HEX NUT CONFIGURATION ABOVE CEILING ANCHORS. SINGLE HEX NUT BENEATH HANGING ANGLE IS ACCEPTABLE FOR FULL LENGTH HANGING ANGLES. MAINTAIN 1/4" OF EXPOSED THREADS BENEATH BOTTOM HEX NUT. TORQUE ALL HEX NUTS TO 57 FT-LBS.



TYPICAL ANSUL R-102 SYSTEM LAYOUT

FOR QUESTIONS, CALL THE: KANSAS CITY REGIONAL OFFICE
 1126 SWIFT STREET, KANSAS CITY, MO 64116
 PHONE: (816) 221-8575
 FAX: (816) 221-8311

CUSTOMER APPROVAL TO MANUFACTURE:

Approved as Noted
 Approved with NO Exception Taken
 Revise and Resubmit

Signature: _____ Date: _____
 Your Title: _____

***** NOTE *****
 ALL WALLS AND STRUCTURES THAT COME WITHIN 18" OF HOOD MUST BE METAL STUDS AND SHEETROCK. WOOD STUDS OR ANY OTHER COMBUSTIBLE MATERIAL WITHIN 18" OF HOOD NO ALLOWED.

***** NOTE *****
 HOOD MANUFACTURER RECOMMENDS NO RETURNS OR 4-WAY DIFFUSERS WITHIN 10 FEET OF HOOD IN ALL DIRECTION.

***** NOTE *****
 MAKEUP AIR SHALL BE DELIVERED INTO SPACE IN MANNER THAT WILL NOT DISRUPT HOODS ABILITY TO CAPTURE AND CONTAIN.

REVISIONS

DESCRIPTION	DATE

CAPTIVEAIRE

HBT Foodservice

1126 Swift Street, North Kansas City, MO, 64116 PHONE: (816) 221-8575 FAX: (816) 221-8311 EMAIL: reg98@captivaire.com

Hawaiian Bros Lindbergh MD
 5905 S Lindbergh Blvd,
 St. Louis, MO, 63123

DATE: 7/13/2022

DWG.#: 5448899

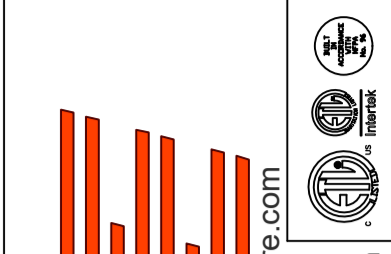
DRAWN BY: michael.co

SCALE: 3/4" = 1'-0"

MASTER DRAWING

SHEET NO. 1

REVISIONS	
DESCRIPTION	DATE



CAPTIVE AIR

HBT Foodservice

www.captiveair.com
1126 Swift Street, North Kansas City, MO, 64116 PHONE: (816) 221-8575 FAX: (816) 221-8311 EMAIL: reg98@captiveair.com

Hawaiian Bros Lindbergh MD
5905 S Lindbergh Blvd,
St. Louis, MO, 63123

DATE: 7/13/2022

DWG.#:
5448899

DRAWN BY: michael.co

SCALE:
3/4" = 1'-0"

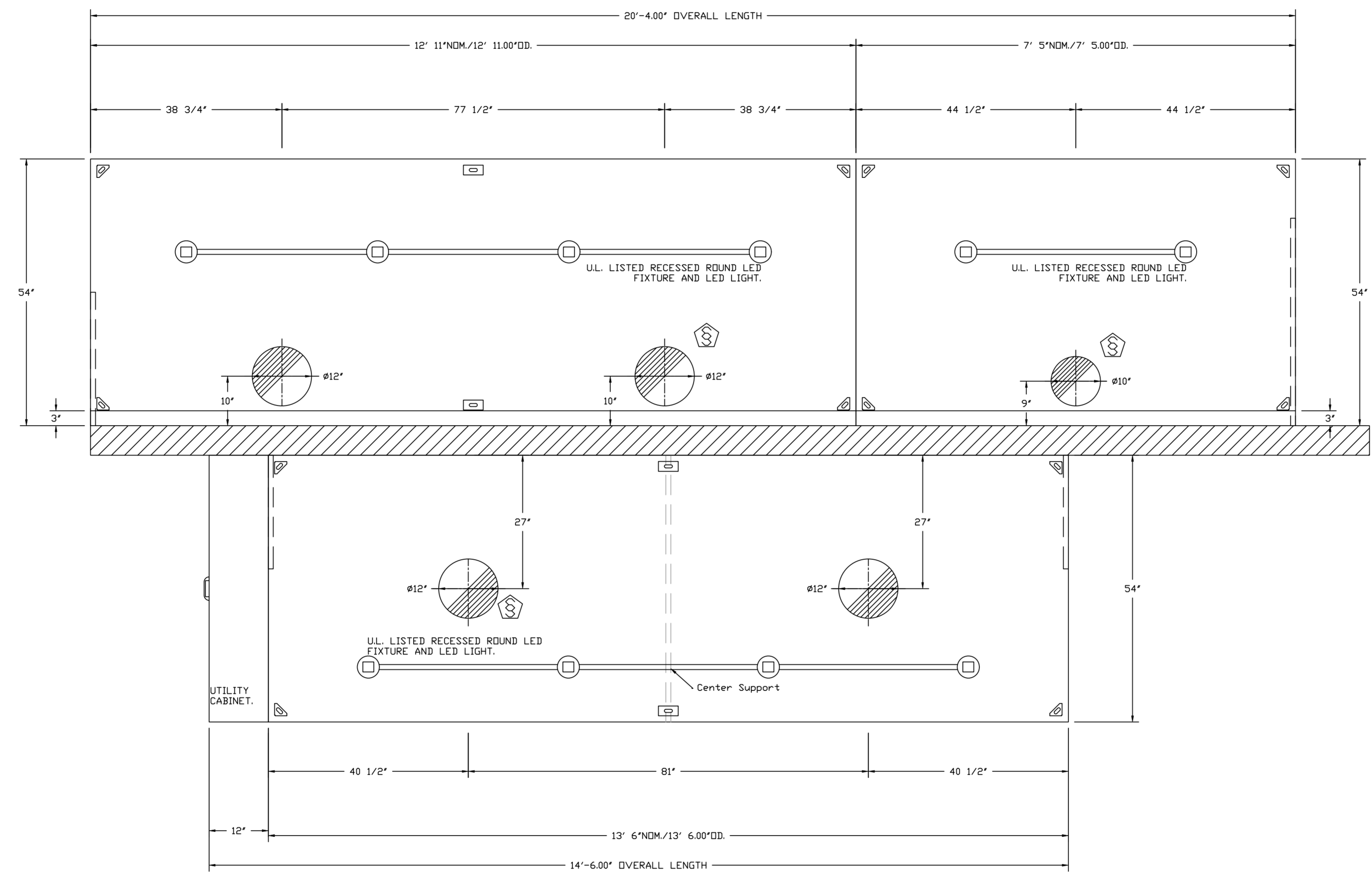
MASTER DRAWING

SHEET NO.
2

NOTE: ADDITIONAL HANGING ANGLES PROVIDED FOR HOODS 12' AND LONGER.

PLAN VIEW - HOOD #1 (Item 52)
12' 11.00" LONG 5424ND-2

PLAN VIEW - HOOD #2 (Item 53)
7' 5.00" LONG 5424ND-2



PLAN VIEW - HOOD #3 (Item 75)
13' 6.00" LONG 5424VHB-ND

NOTE: ADDITIONAL HANGING ANGLES PROVIDED FOR HOODS 12' AND LONGER.

SPECIFICATIONS

TAG: Commercial Kitchen Ventilation Hoods, Listed Commercial Kitchen Hoods

PART 1 - GENERAL

1.1 SUMMARY

- A. The ND2 series is a Type I, wall canopy hood for use over 450°F, 700°F cooking surface temperatures. The aerodynamic design includes a mechanical baffle and performance enhancing lip for exceptional capture and containment.
- B. The VHB Series is a Premier Type II, exhaust only hood used over equipment not producing grease laden vapors. Type II hoods are used for condensation or heat removal applications.
- C. The hood shall have the size, shape, and performance specified on drawings.

1.2 SUBMITTALS

- A. The manufacturer assumes no liability for the use or results of use from this document. Specifications are to be reviewed by the engineer to confirm the project's requirements and meet Federal, State, and Local codes and regulations.
- B. As the manufacturer continues product development, it reserves the right to change design and specifications without notice.
- C. The manufacturer shall supply complete computer generated submittal drawings, including hood section view(s) and hood plan view(s). These drawings must be available to the engineer, architect, and owner for their use in construction, operation, and maintenance.

1.3 QUALITY ASSURANCE

- A. This hood is ETL-listed to standard UL710, ULC710, and ULC-S646 when installed in accordance with these installation instructions and National Fire Protection Association Standard NFPA 96, Standard for Ventilation Control and Fire Protection of Commercial Cooking Operations."
- B. Built-in compliance with NSF/ANSI Standard 2.
- C. The hood shall be ETL Listed as:
1. "Exhaust Hood Without Exhaust Damper."
 2. ETL Sanitation Listed and built in accordance with NFPA 96.
 3. The ETL label shall list temperature rating(s) and minimum CFM/ft rating(s).

1.4 WARRANTY

- A. All units shall be provided with the following standard warranty:
1. This equipment is warranted to be free from defects in materials and workmanship, under normal use and service, for a period of 2-years from date of shipment.
- B. The manufacturer shall not be liable for incidental and consequential losses and damages potentially attributable to malfunctioning equipment. Should any part of the equipment prove to be defective in material or workmanship within the 2-year warranty period, upon examination by the manufacturer, such part will be repaired or replaced by manufacturer at no charge. The buyer shall pay all labor costs incurred in connection with such repair or replacement. Equipment shall not be returned without manufacturer's prior authorization, and all returned equipment shall be shipped by the buyer, freight prepaid to a destination determined by the manufacturer.
- C. Refer to Manufacturer's Operation, Installation, and Maintenance (OIM) Manual for detailed descriptions of what is/is not covered and contact information for warranty claims.

PART 2 - PRODUCTS

2.1 GENERAL

- A. Construction shall be dependent on the structural application to minimize distortion and other defects. All seams, joints, and penetrations of the hood enclosure to the lower outermost

perimeter, which directs and captures grease-laden vapor and exhaust gases, shall have a liquid-tight continuous external weld in accordance with NFPA 96.

- B. Duct sizes, CFM, and static pressure requirements shall be as shown on drawings. Static pressure requirements shall be precise and accurate; air velocity and volume information shall be accurate within 1-ft increments along the length of the ventilator.

2.2 CONSTRUCTION

- A. Construction shall be type 430 stainless steel.
- B. Double wall insulated front to eliminate condensation and increase rigidity on wide sizes. The insulation shall have a flexural modulus of 475 EI, meet UL 181 requirements and be in accordance with NFPA 90A and 90B.
- C. Hood shall be equipped with a minimum of four connections for hanger rods. Hood lengths greater than 12' will have added hangers.
- D. Exhaust duct collar to be 4" high with flange.
- E. The grease drain system shall be an enclosed integral part of the hood back and have slopes with an exposed, removable 1/2 grease cup to facilitate cleaning.
- F. An integral baffle to direct grease laden vapors toward the exhaust filter bank.
- G. Hood shall be furnished with UL classified filters, supplied in size and quantity as required by ventilator.
- H. All seams shall be welded and have stainless steel on exposed surfaces.

2.3 LIGHTING

- A. Recessed round LED fixture and LED light, 3500K Warm output.

2.4 FILTERS

- A. Stainless Steel Captrate Solo filter with hook, ETL Listed. Particulate capture efficiency: 85% efficient at 9 microns, 76% efficient at 5 microns.

2.5 OPTIONS

- A. Hood Mounted Utility Cabinet - Cabinet can store listed fire suppression system, listed components, pre-wired electrical controls.

2.6 ACCESSORIES

- A. Balance Damper - Used to manually balance exhaust flow rate. Installed in hood plenum.
- B. End Panel(s) maximize hood performance and eliminate the effects of cross drafts in the kitchen. Units constructed of stainless steel and sized according to hood width and cooking equipment. Exposed edges hemmed for safety and rigidity. Selected panels:
1. Quarter End Panel
 2. Vertical End Panel
 3. Wide Vertical End Panel
- C. Wrapper(s) may be installed from the factory or field installed. Wrapper(s) selected:
1. Wrapper
- D. Miscellaneous option(s) selected:
1. Riser Sensor Install -Sensor set-up for 3" thick double wall duct.
 2. Riser Sensor Install -Sensor set-up for 6" plenum.

PART 3 - EXECUTION

3.1 EXAMINATION

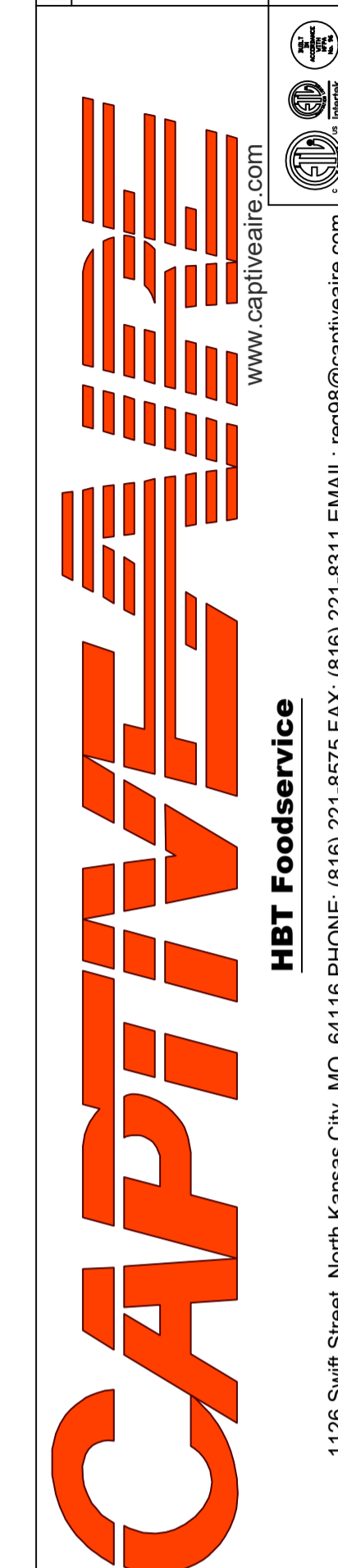
- A. Examine areas and conditions under which the system is installed. Do not proceed with work until unsatisfactory conditions have been corrected in a manner acceptable to Installer.

3.2 INSTALLATION

- A. Install in accordance with manufacturer's instructions, drawings, written specifications, manufacturer's installation manual, and all applicable building codes.

REVISIONS

DESCRIPTION	DATE:
Δ	
Δ	
Δ	
Δ	



Hawaiian Bros Lindbergh MD
5905 S Lindbergh Blvd,
St. Louis, MO, 63123

DATE: 7/13/2022

DWG.#:
5448899DRAWN
BY: michael.coSCALE:
3/4" = 1'-0"

MASTER DRAWING

SHEET NO.

4

EXHAUST FAN INFORMATION - JOB#5448899

FAN UNIT NO	TAG	QTY	FAN UNIT MODEL #	MANUFACTURER	CFM	ESP	RPM	MOTOR ENCL	HP	BHP	PHASE	VOLT	FLA	DISCHARGE VELOCITY	WEIGHT (LBS)	SDNES
1	ITEM 52/53	1	DU240HFA	CAPTIVEAIRE	4025	1.500	894	DDP,PREMIUM	5.000	1.9990	3	208	15.8	915 FPM	319	17
2	ITEM 75	1	DU85HFA	CAPTIVEAIRE	2025	0.650	1308	TEAD-ECM	1.000	0.3980	1	208	6.9	641 FPM	92	13.1
3	CO2 EXHAUST	1	DR12HFA	CAPTIVEAIRE	200	0.380	1070	TEAD-ECM	0.250	0.0530	1	115	2.9		61	4.7
4	BATHROOM EXHAUST	1	DR12HFA	CAPTIVEAIRE	300	0.500	1288	TEAD-ECM	0.250	0.0930	1	115	2.9		61	7.1

DOAS/RTU FAN SCHEDULE - JOB#5448899

FAN UNIT NO	TAG	QTY	DOAS/RTU MODEL #	MANUFACTURER	BLOWER	RETURN AIR CFM	MAX OUTSIDE AIR CFM	TOTAL CFM	WEIGHT (LBS)	ESP	ELECTRICAL INFORMATION				COOLING INFORMATION						REHEAT INFORMATION				GAS HEAT INFORMATION				NOTES									
											HP	Ø	VOLT	MCA	MOCB	OUTSIDE AIR			MIXED AIR			LEAVING AIR			CAPACITY		IEER	ISMRE		DISCHARGE		CAPACITY		MOISTURE REMOVAL RATE	GAS TYPE	INPUT BTUs	OUTPUT BTUs	TEMP RISE
																DB	WB	DB	WB	DB	WB	DP	TOTAL	SENS.	DB	WB				DESIRED	MAX							
5	RTU1 DINING	1	CASRTU3-1.300-20-15T-DDAS	CAPTIVEAIRE	20P-3	1200	1800	3000	2525	1.000	5.00	3	208	70.9A	80A	96.2°F	79.5°F	87.7°F	73.3°F	54.7°F	53.6°F	52.9°F	186.0 MBH	103.3 MBH	18.8	5.7	70.0°F	60.6°F	50.5 MBH	129.6 MBH	75.1 LBS/HR	NATURAL	244919	198384	55°F	1,2,3,4,5,6,7,8,9,10,11,12,13,14,15,16,17,18		
6	RTU2 KITCHEN	1	CASRTU3-1.300-18-20T-DDAS	CAPTIVEAIRE	18P-3	0	3000	3000	2575	1.000	5.00	3	208	87.5A	100A	96.2°F	79.5°F	96.2°F	79.5°F	56.3°F	53.0°F	50.6°F	264.0 MBH	123.4 MBH	18.2	6.0	70.0°F	58.4°F	45 MBH	129.6 MBH	127.0 LBS/HR	NATURAL	288828	233951	65°F	1,2,3,4,5,6,7,8,9,10,11,12,13,15,18		
7	RTU3	1	CASRTU3-1.250-20-15T-DDAS	CAPTIVEAIRE	20P-3	1200	1800	3000	2593	1.000	3.00	3	208	64.9A	70A	96.2°F	79.5°F	87.7°F	73.3°F	54.5°F	53.6°F	53.0°F	186.0 MBH	103.3 MBH	18.8	5.7	70.0°F	60.7°F	51 MBH	129.6 MBH	75.1 LBS/HR	NATURAL	223156	180756	50°F	1,2,3,4,5,6,7,8,9,10,11,12,13,14,15,16,17,18		

NOTES:

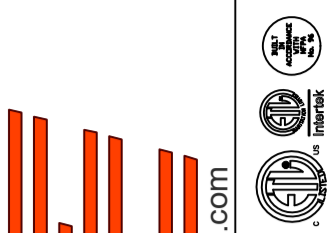
- INVERTER SCROLL COMPRESSOR WITH INTEGRATED OIL SENSOR. DIGITAL OR STAGED SCROLL NOT AN APPROVED EQUAL
 - DIRECT DRIVE PLENUM BLOWER. BELT DRIVEN BLOWERS ARE NOT ACCEPTABLE
 - INTEGRATED MONITORING VIA CELLULAR CONNECTION BY MANUFACTURER
 - REFRIGERATION PRESSURE MONITORING ON HIGH AND LOW PRESSURE SIDE OF SYSTEM INCLUDED THROUGH DIGITAL INTERFACE
 - EC MOTOR CONDENSING FANS
 - ELECTRONIC EXPANSION VALVE. TXV NOT ACCEPTABLE
 - SUCTION LINE ACCUMULATOR
 - FACTORY COMMISSIONING WITH 5 YEAR PARTS WARRANTY, 25 YEAR WARRANTY ON STAINLESS STEEL HEAT EXCHANGER
 - AVERAGING INTAKE, EVAP AND DISCHARGE TEMPERATURE SENSORS (DISCHARGE SENSOR TO BE FACTORY MOUNTED WITHIN UNIT)
 - 2" EXTERIOR DUAL-WALL CONSTRUCTION W/ R-13 INSULATION-MINIMUM 20GA EXTERIOR W/ 14GA BASE
 - 80% EFFICIENT FURNACE, WITH MODULATING INDUCER TO MAINTAIN CONSTANT COMBUSTION EFFICIENCY ACROSS FIRING RANGE. 6:1 TURNDOWN WITH NG AND 5:1 TURNDOWN WITH LP
 - SUPPLY CFM MONITORING INTEGRAL TO UNIT WITH CFM MEASUREMENT INCLUDED THROUGH DIGITAL INTERFACE
 - FULLY MODULATING HOT GAS REHEAT
 - 15 DEGREE LOW AMBIENT OPERATION
 - HAIL GUARD FOR CONDENSING COIL
 - RTU ECONDMIZER WITH DIFFERENTIAL ENTHALPY CONTROL
 - BAROMETRIC RELIEF DAMPER
18. DOWN DISCHARGE/DOWN RETURN

FAN OPTIONS

FAN UNIT NO	TAG	QTY	DESCRIPTION	FAN UNIT NO	TAG	QTY	DESCRIPTION
1	ITEM 52/53	1	GREASE BOX	7	RTU3	1	CASLINK BUILDING MONITORING SYSTEM - INTERNET OR CELLULAR CONNECTION REQUIRED
		1	EXHAUST FAN HEAT BAFFLE			1	RTU3 DOWN DISCHARGE
		1	UNIT MOUNTED VFD FOR USE WITH ECPM03			1	2" MERV 13 FILTERS FOR RTU3 (QTY. 4)
		1	VFD MOUNTING BRACKET FOR DU/DR 240			1	2" MERV 8 FILTERS FOR RTU3 (QTY. 4)
		1	2 YEAR PARTS WARRANTY			1	OVERHEAT STAT
2	ITEM 75	1	GREASE BOX	1	VFD FACTORY MOUNTED AND WIRED IN RTU COMMERCIAL CONTROL VESTIBULE		
		1	ECM WIRING PACKAGE - PWM SIGNAL FROM ECPM03 PREWIRE (TELCO MOTOR), CCW ROTATION	1	REMOTE TEMPERATURE AND HUMIDITY SPACE SENSOR		
3	CO2 EXHAUST	1	2 YEAR PARTS WARRANTY	1	RTU3 CURB DUCT HANGER		
		1	ECM WIRING PACKAGE - MANUAL OR 0-10VDC REFERENCE SPEED CONTROL -RTC- (TELCO MOTOR), CCW ROTATION	1	OCCUPIED SCHEDULING		
4	BATHROOM EXHAUST	1	MOTORIZED I 12 BDD 120/240V	1	CLOGGED FILTER SWITCH - NOTIFICATION ON HMI		
		1	2 YEAR PARTS WARRANTY	1	20 TON MODULATING COOLING OPTION, 208/230V. R410A REFRIGERANT, VARIABLE SPEED COMPRESSOR, ECM CONDENSING FANS		
		1	ECM WIRING PACKAGE - MANUAL OR 0-10VDC REFERENCE SPEED CONTROL -RTC- (TELCO MOTOR), CCW ROTATION	1	20 TON MODULATING REHEAT OPTION - SPACE DEWPOINT CONTROL		
		1	FREEZESTAT	1	VAV PACKAGE W/ 0-10VDC INPUT CONTROL (S71 VFD INCLUDED)		
5	RTU1 DINING	1	MANIFOLD PRESSURE GAUGE, 0-35"	1	RTU3 HAIL GUARD		
		1	INLET PRESSURE GAUGE, 0-35"	1	RTU INTAKE/RETURN DAMPER - MANUAL CONTROL VIA HMI		
		1	MANIFOLD PRESSURE GAUGE, 0 TO 10" WC, 1 FURNACE	1	RTU3 DOWN RETURN		
		1	RTU TOTAL CFM MONITORING	1	RTU RETURN MOUNTED SMOKE DETECTOR AND SAMPLING TUBE - FACTORY INSTALLED		
		1	SHIP LOOSE GAS STRAINER 3/4"	1	5 YEAR ENTIRE UNIT PARTS WARRANTY, 10 YEAR ENTIRE UNIT PARTS WARRANTY WITH REMOTE MONITORING AND CAPTIVEAIRE SERVICE CONTRACT, 25 YEAR STAINLESS STEEL FURNACE PARTS WARRANTY (SEE ADDITIONAL DETAILS)		
		1	SINGLE POINT ELECTRICAL CONNECTION FOR RTU. 750VA TRANSFORMER USED. IF A NON-DCV PREWIRE CONTROLS THIS UNIT, THE #28, #47, "MA", OR "E2" PREWIRE OPTION MUST BE SELECTED. DOES NOT PROVIDE SUPPLY STARTER IN PREWIRE	1	INLET PRESSURE GAUGE, 0-35"		
		1	CASLINK BUILDING MONITORING SYSTEM - INTERNET OR CELLULAR CONNECTION REQUIRED	1	MANIFOLD PRESSURE GAUGE, 0 TO 10" WC, 1 FURNACE		
		1	LOW AMBIENT COOLING OPERATION - DOWN TO 15F AMBIENT	1	RTU TOTAL CFM MONITORING		
		1	RTU3 DOWN DISCHARGE	1	SHIP LOOSE GAS STRAINER 3/4"		
		1	2" MERV 13 FILTERS FOR RTU3 (QTY. 4)	1	SINGLE POINT ELECTRICAL CONNECTION FOR RTU. 750VA TRANSFORMER USED. IF A NON-DCV PREWIRE CONTROLS THIS UNIT, THE #28, #47, "MA", OR "E2" PREWIRE OPTION MUST BE SELECTED. DOES NOT PROVIDE SUPPLY STARTER IN PREWIRE		
		1	2" MERV 8 FILTERS FOR RTU3 (QTY. 4)	1	CASLINK BUILDING MONITORING SYSTEM - INTERNET OR CELLULAR CONNECTION REQUIRED		
		1	OVERHEAT STAT	1	LOW AMBIENT COOLING OPERATION - DOWN TO 15F AMBIENT		
		1	VFD FACTORY MOUNTED AND WIRED IN RTU COMMERCIAL CONTROL VESTIBULE	1	RTU3 DOWN DISCHARGE		
		1	15 TON MODULATING COOLING OPTION, 208/230V. R410A REFRIGERANT, VARIABLE SPEED COMPRESSOR, ECM CONDENSING FANS	1	2" MERV 13 FILTERS FOR RTU3 (QTY. 4)		
		1	15 TON MODULATING REHEAT OPTION - SPACE DEWPOINT CONTROL	1	2" MERV 8 FILTERS FOR RTU3 (QTY. 4)		
1	REMOTE TEMPERATURE AND HUMIDITY SPACE SENSOR	1	OVERHEAT STAT				
1	RTU3 CURB DUCT HANGER	1	VFD FACTORY MOUNTED AND WIRED IN RTU COMMERCIAL CONTROL VESTIBULE				
1	RTU RETURN MOUNTED SMOKE DETECTOR AND SAMPLING TUBE - FACTORY INSTALLED	1	REMOTE TEMPERATURE AND HUMIDITY SPACE SENSOR				
1	OCCUPIED SCHEDULING	1	RTU3 CURB DUCT HANGER				
1	CLOGGED FILTER SWITCH - NOTIFICATION ON HMI	1	RTU RETURN MOUNTED SMOKE DETECTOR AND SAMPLING TUBE - FACTORY INSTALLED				
1	RTU ECONDMIZER - DIFFERENTIAL ENTHALPY CONTROL	1	OCCUPIED SCHEDULING				
1	RTU3 ECONDMIZER BAROMETRIC RELIEF	1	CLOGGED FILTER SWITCH - NOTIFICATION ON HMI				
1	RTU INTAKE/RETURN DAMPER - MANUAL CONTROL VIA HMI	1	RTU ECONDMIZER - DIFFERENTIAL ENTHALPY CONTROL				
1	RTU3 HAIL GUARD	1	RTU3 ECONDMIZER BAROMETRIC RELIEF				
1	RTU3 DOWN RETURN	1	RTU INTAKE/RETURN DAMPER - MANUAL CONTROL VIA HMI				
1	FREEZESTAT	1	RTU3 DOWN RETURN				
1	VAV PACKAGE W/ MANUAL/DDC CONTROL (S71 VFD INCLUDED)	1	FREEZESTAT				
6	RTU2 KITCHEN	1	5 YEAR ENTIRE UNIT PARTS WARRANTY, 10 YEAR ENTIRE UNIT PARTS WARRANTY WITH REMOTE MONITORING AND CAPTIVEAIRE SERVICE CONTRACT, 25 YEAR STAINLESS STEEL FURNACE PARTS WARRANTY (SEE ADDITIONAL DETAILS)	1	VAV PACKAGE W/ MANUAL/DDC CONTROL (S71 VFD INCLUDED)		
		1	INLET PRESSURE GAUGE, 0-35"	1	15 TON MODULATING COOLING OPTION, 208/230V. R410A REFRIGERANT, VARIABLE SPEED COMPRESSOR, ECM CONDENSING FANS		
		1	MANIFOLD PRESSURE GAUGE, 0 TO 10" WC, 1 FURNACE	1	15 TON MODULATING REHEAT OPTION - SPACE DEWPOINT CONTROL		
		1	RTU TOTAL CFM MONITORING	1	RTU3 HAIL GUARD		

REVISIONS

DESCRIPTION	DATE



www.captiveaire.com
reg98@captiveaire.com

HBT Foodservice

1126 Swift Street, North Kansas City, MO, 64116 PHONE: (816) 221-8575 FAX: (816) 221-8311 EMAIL: reg98@captiveaire.com

Hawaiian Bros Lindbergh MD
5905 S Lindbergh Blvd,
St. Louis, MD, 63123

DATE: 7/13/2022

DWG.#:
5448899

DRAWN BY: michael.co

SCALE:
3/4" = 1'-0"

MASTER DRAWING

SHEET NO.
5

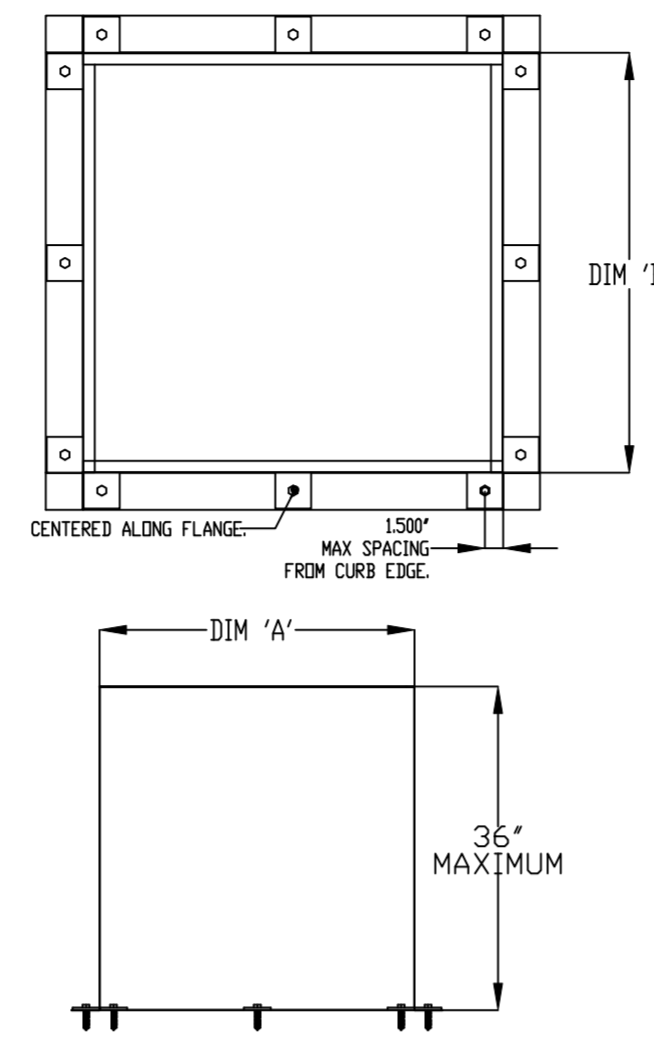
FAN ACCESSORIES

FAN UNIT NO	TAG	EXHAUST			SUPPLY			
		GREASE CUP	GRAVITY DAMPER	WALL MOUNT	SIDE DISCHARGE	GRAVITY DAMPER	MOTORIZED DAMPER	WALL MOUNT
1	ITEM 52/53	YES						
2	ITEM 75	YES						
3	CO2 EXHAUST							
4	BATHROOM EXHAUST							

CURB ASSEMBLIES

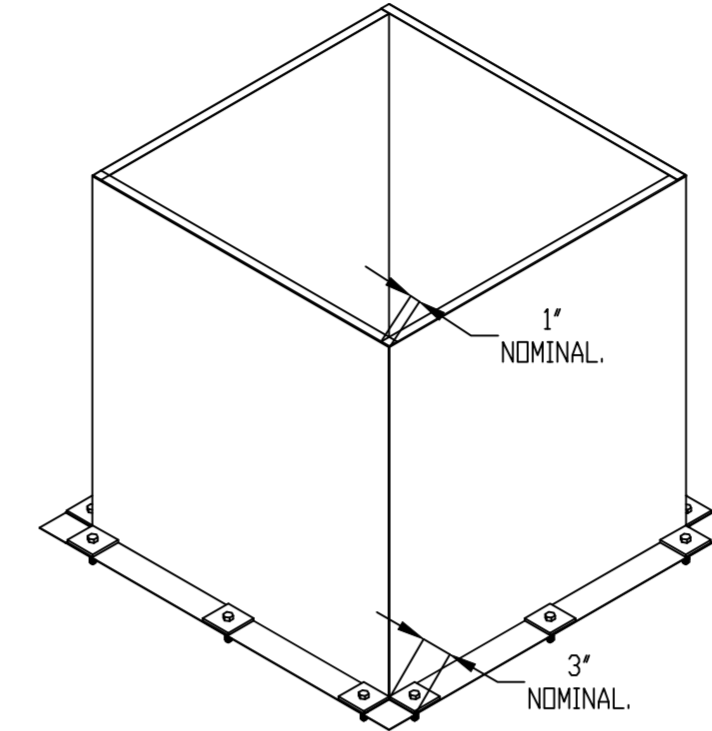
NO	DN FAN	TAG	WEIGHT	ITEM	SIZE
1	# 1	ITEM 52/53	75 LBS	CURB	31.500"W X 31.500"L X 20.000"H ALONG LENGTH, RIGHT INSULATED VENTED HINGED 16 GAUGE.
2	# 2	ITEM 75	57 LBS	CURB	23.000"W X 23.000"L X 20.000"H ALONG LENGTH, RIGHT INSULATED VENTED HINGED 16 GAUGE.
3	# 3	CO2 EXHAUST	73 LBS	CURB	17.500"W X 17.500"L X 18.000"H ALONG LENGTH, RIGHT INSULATED 16 GAUGE.
4	# 4	BATHROOM EXHAUST	73 LBS	CURB	17.500"W X 17.500"L X 18.000"H ALONG LENGTH, RIGHT INSULATED 16 GAUGE.
5	# 5	RTU1 DINING	281 LBS	CURB	59.500"W X 91.000"L X 24.000"H ALONG WIDTH, RIGHT INSULATED 16 GAUGE.
6	# 6	RTU2 KITCHEN	281 LBS	CURB	59.500"W X 91.000"L X 24.000"H ALONG WIDTH, RIGHT INSULATED 16 GAUGE.
7	# 7	RTU3	281 LBS	CURB	59.500"W X 91.000"L X 24.000"H ALONG WIDTH, RIGHT INSULATED 16 GAUGE.

SEISMIC EXHAUST CURB

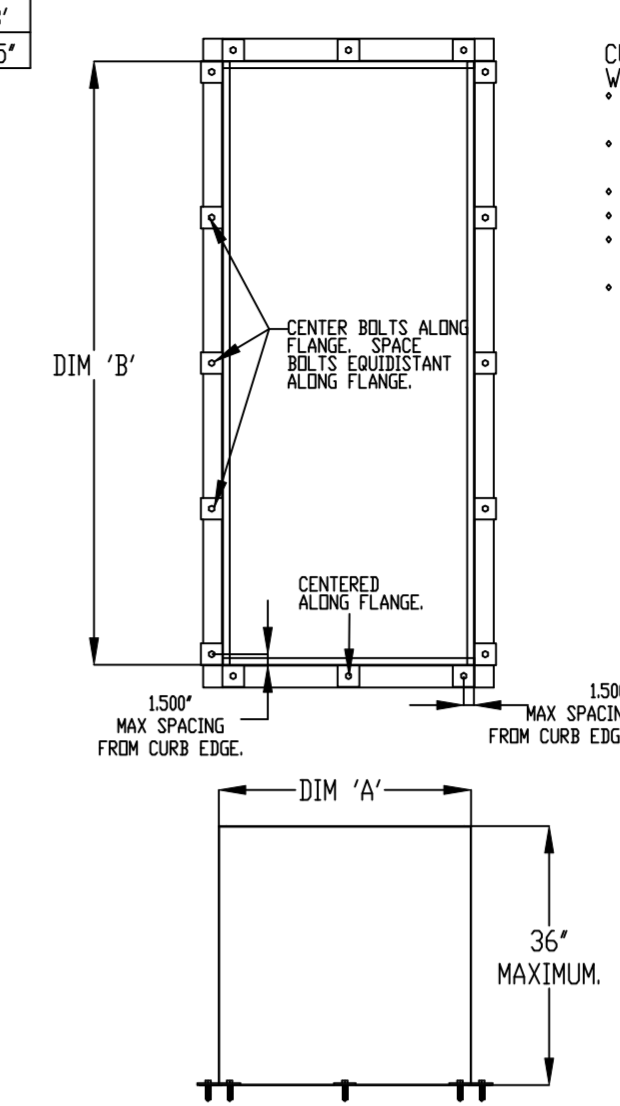


- CURBS ARE BUILT IN THE FOLLOWING WAY:
- METAL IS .060" ALUMINIZED SHEET METAL.
 - ALL SEAMS ARE WELDED WITH MIG USING ER70S-6 WIRE.
 - TOP FLANGE IS 1.00" WIDE.
 - BOTTOM FLANGE IS 3.00" WIDE.
 - WIDTHS AND LENGTHS VARY BY PRODUCT INSTALLED.
 - MAX CURB PITCH IS 5' ON 12'.

CURB DIMENSIONS		
UNIT TYPE	DIM 'A'	DIM 'B'
EXHAUST	19.5-42.5'	19.5-42.5'

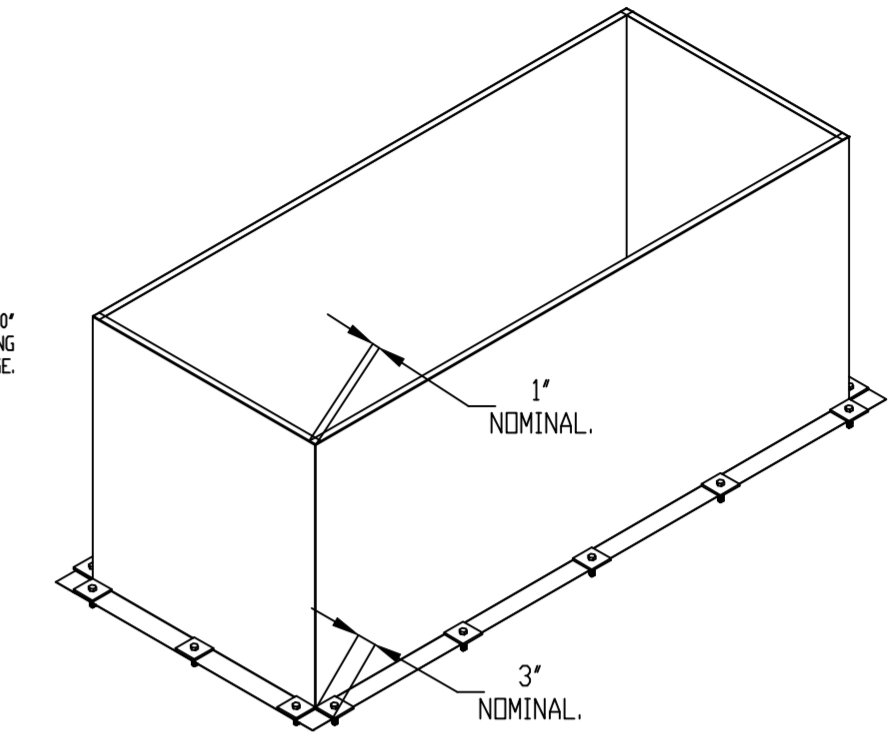


SEISMIC SUPPLY CURB



- CURBS ARE BUILT IN THE FOLLOWING WAY:
- METAL IS .060" ALUMINIZED SHEET METAL.
 - ALL SEAMS ARE WELDED WITH MIG USING ER70S-6 WIRE.
 - TOP FLANGE IS 1.00" WIDE.
 - BOTTOM FLANGE IS 3.00" WIDE.
 - WIDTHS AND LENGTHS VARY BY PRODUCT INSTALLED.
 - MAX CURB PITCH IS 5' ON 12'.

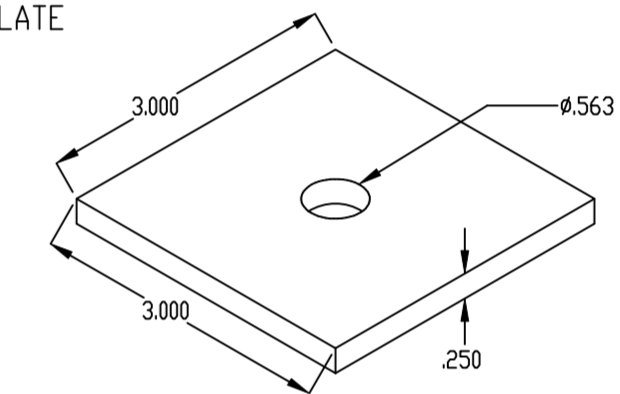
CURB DIMENSIONS		
UNIT TYPE	DIM 'A'	DIM 'B'
SUPPLY	19.5-52.75'	19.5-52.75'



SEISMIC HARDWARE

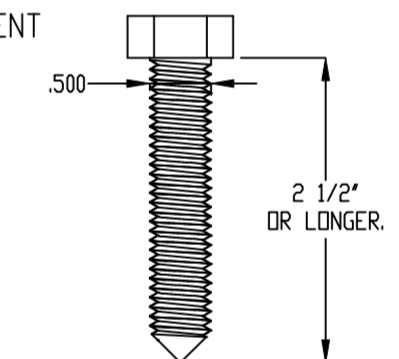
ROOFTOP CURB ATTACHMENT PLATE

STEEL SUPPORT BLOCK, 3" X 3" BY .250" THICK STEEL PLATE AND GALVANIZED FOR WEATHER RESISTANCE. PART NUMBER FOR THE PLATE IS 91133A140 (MACDLA# A0017326).



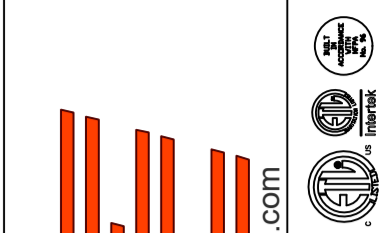
LAG BOLT FOR ROOFTOP CURB ATTACHMENT

STEEL LAG BOLT, .500" DIAMETER, 1 1/2" OR BOLT MUST BE INSTALLED INTO THE WOODEN SUPPORT STRUCTURE. LAG BOLT MUST NOT BE INSTALLED IN THE END GRAIN. PART NUMBER FOR THE BOLT IS 91478A722 (MACDLA# A0017980).



REVISIONS

DESCRIPTION	DATE:



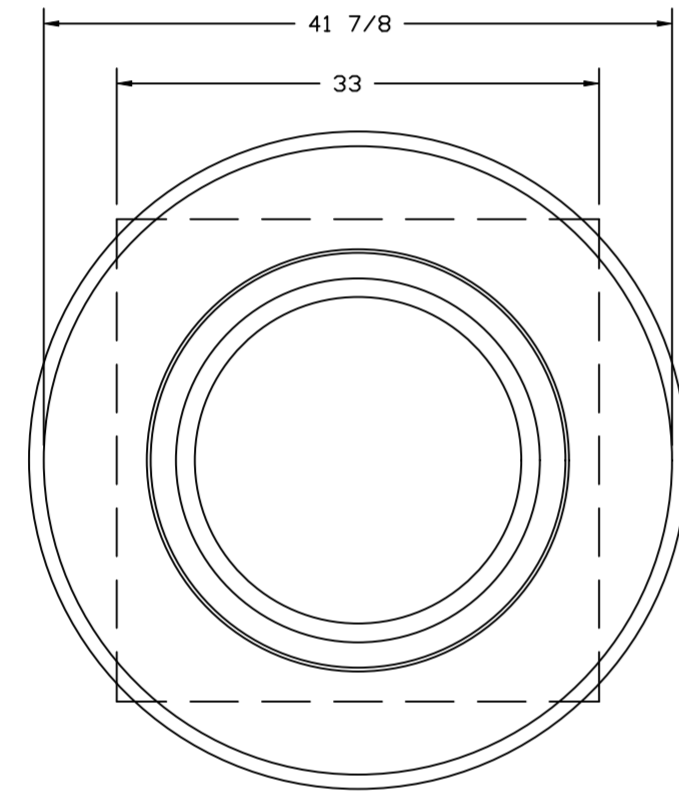
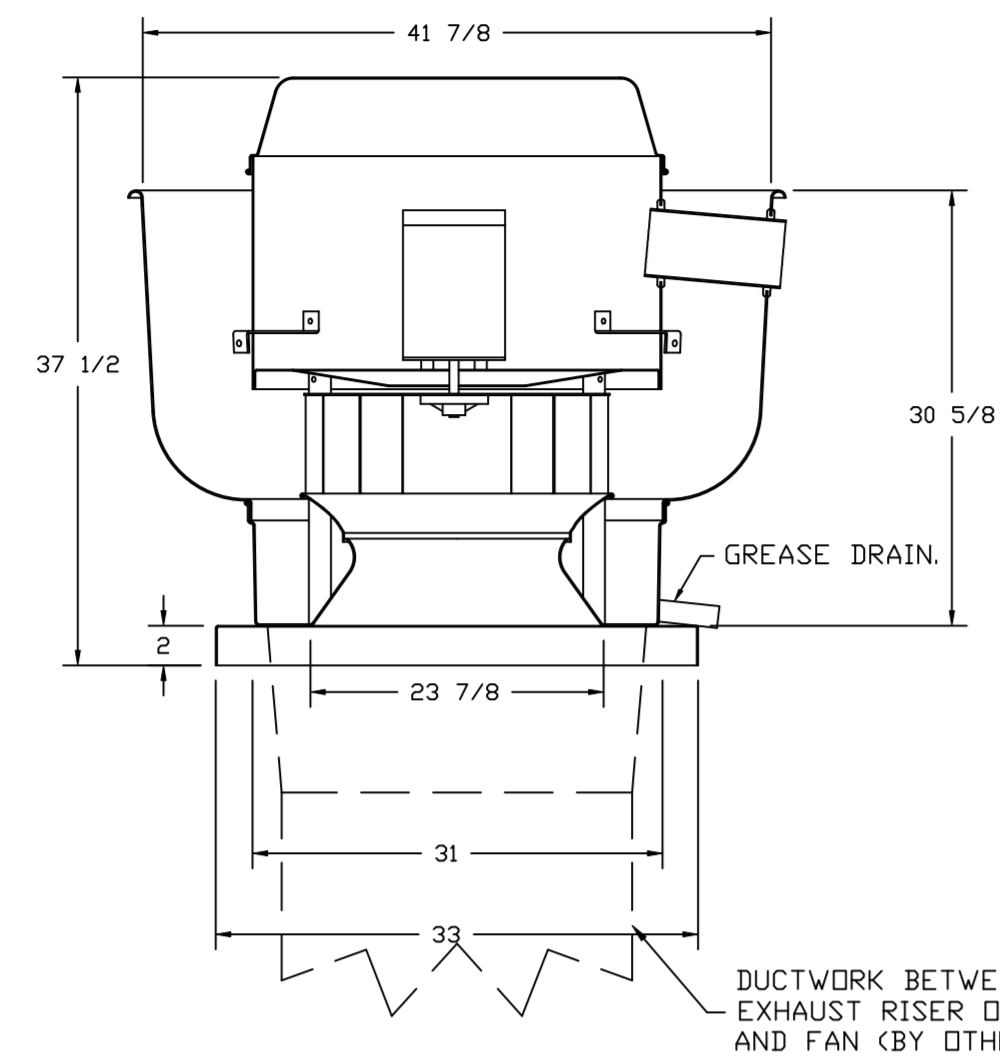
CAPTIVE
HBT Foodservice
 1126 Swift Street, North Kansas City, MO, 64116 PHONE: (816) 221-8311 FAX: (816) 221-8311 EMAIL: reg98@captivair.com

Hawaiian Bros Lindbergh MD
 5905 S Lindbergh Blvd,
 St. Louis, MO, 63123

DATE: 7/13/2022
 DWG.#: 5448899
 DRAWN BY: michael.co
 SCALE: 3/4" = 1'-0"
 MASTER DRAWING

SHEET NO. 6

FAN #1_DUR40HFA - EXHAUST FAN (ITEM 52/53)



TOP VIEW

FEATURES:

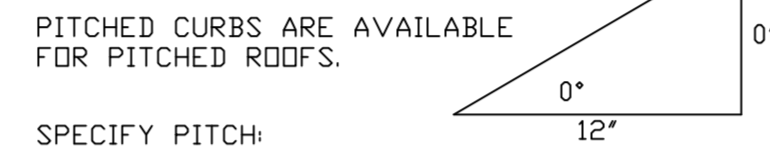
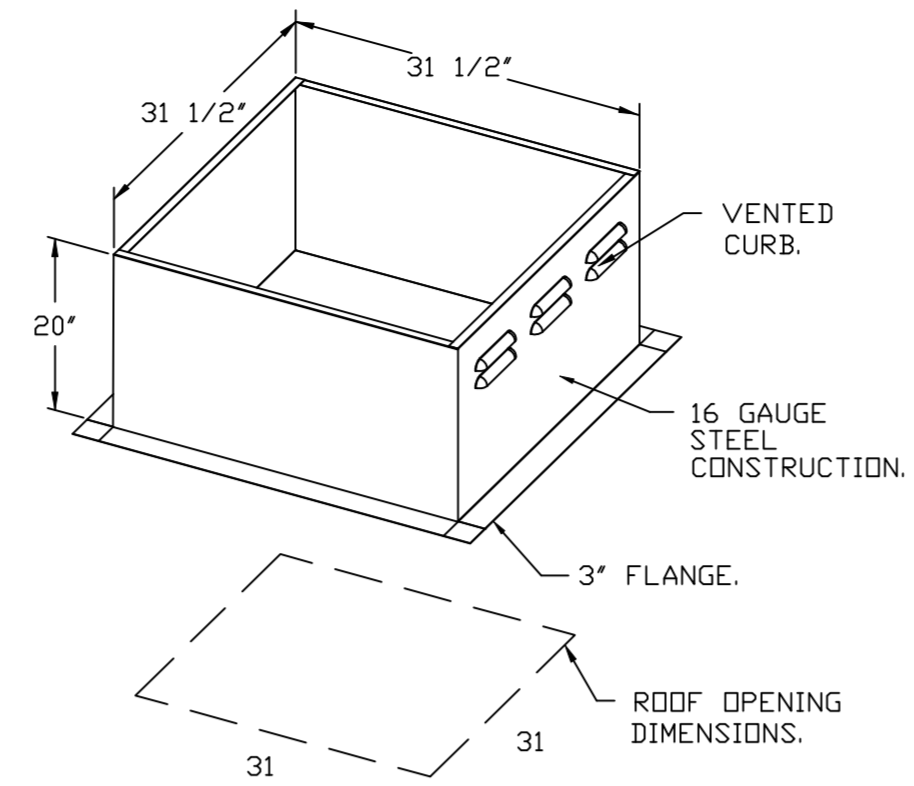
- DIRECT DRIVE CONSTRUCTION (NO BELTS/PULLEYS).
- ROOF MOUNTED FANS.
- RESTAURANT MODEL.
- UL705 AND UL762 AND ULC-S645
- VARIABLE SPEED CONTRL.
- INTERNAL WIRING.
- THERMAL OVERLOAD PROTECTION (SINGLE PHASE).
- HIGH HEAT OPERATION 300°F (149°C).
- GREASE CLASSIFICATION TESTING.
- NEMA 3R SAFETY DISCONNECT SWITCH.

NORMAL TEMPERATURE TEST
EXHAUST FAN MUST OPERATE CONTINUOUSLY WHILE EXHAUSTING AIR AT 300°F (149°C) UNTIL ALL FAN PARTS HAVE REACHED THERMAL EQUILIBRIUM, AND WITHOUT ANY DETERIORATING EFFECTS TO THE FAN WHICH WOULD CAUSE UNSAFE OPERATION.

ABNORMAL FLARE-UP TEST
EXHAUST FAN MUST OPERATE CONTINUOUSLY WHILE EXHAUSTING BURNING GREASE VAPORS AT 600°F (316°C) FOR A PERIOD OF 15 MINUTES WITHOUT THE FAN BECOMING DAMAGED TO ANY EXTENT THAT COULD CAUSE AN UNSAFE CONDITION.

OPTIONS

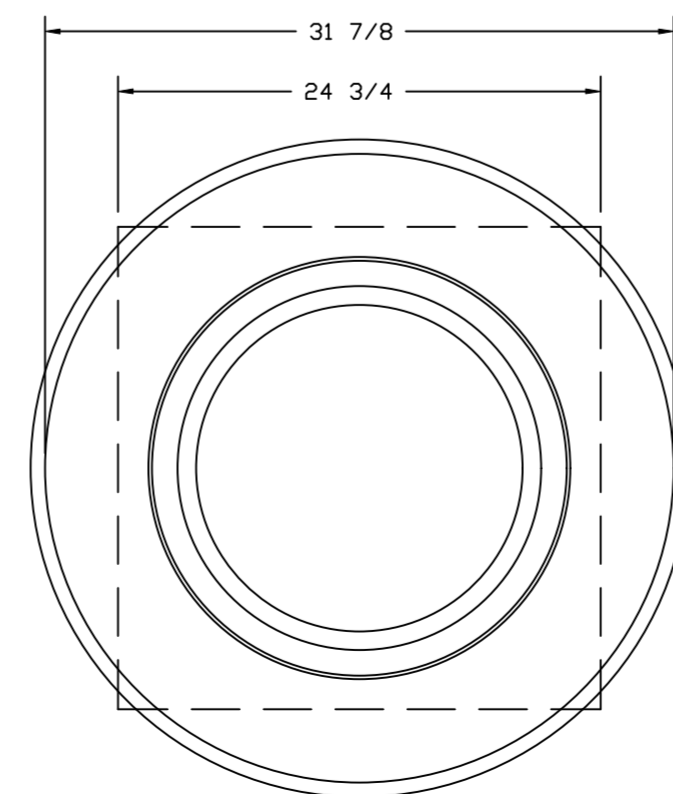
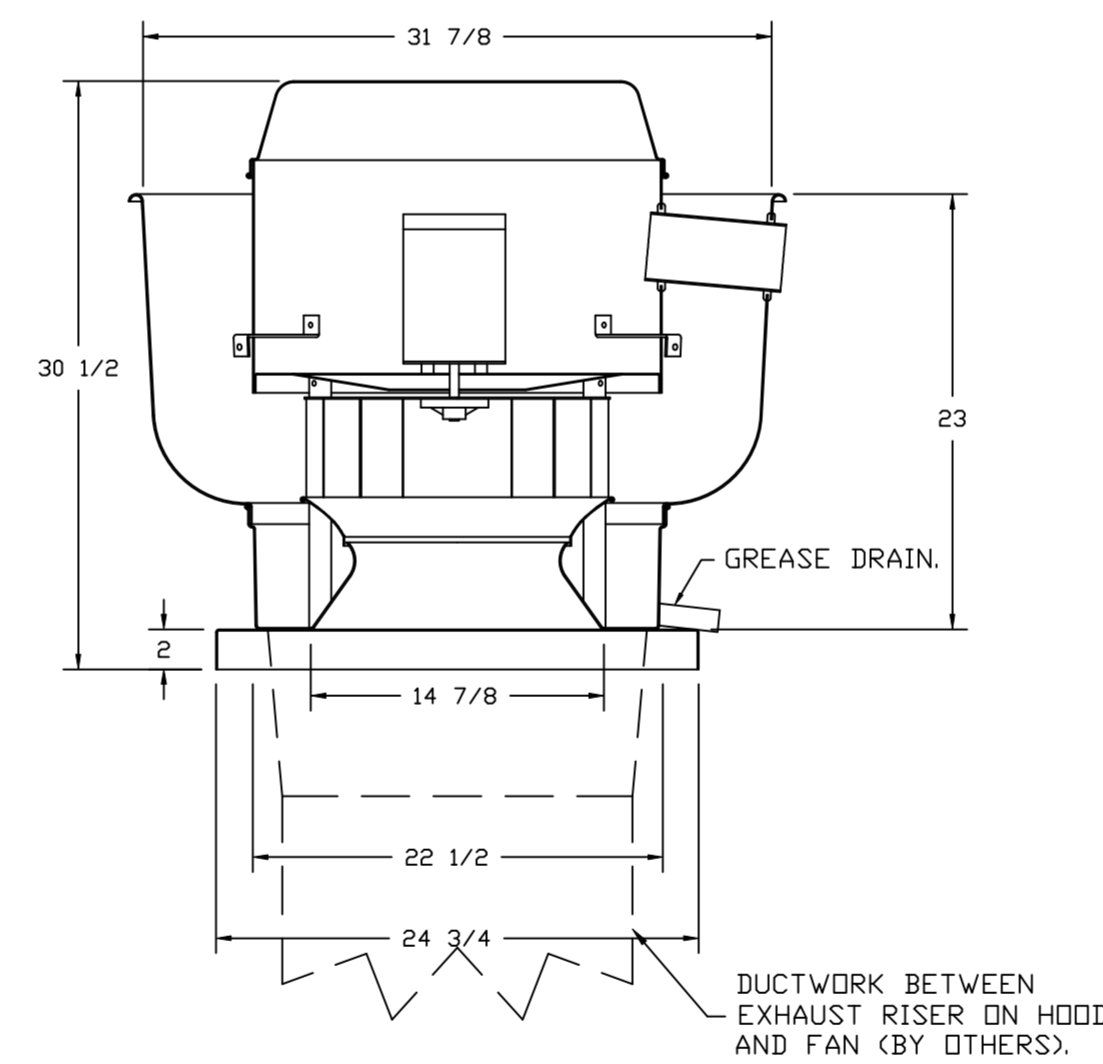
- GREASE BOX.
- EXHAUST FAN HEAT BAFFLE.
- UNIT MOUNTED VFD FOR USE WITH ECPM03.
- VFD MOUNTING BRACKET FOR DU/DR 240.
- 2 YEAR PARTS WARRANTY.



PITCHED CURBS ARE AVAILABLE FOR PITCHED ROOFS.

SPECIFY PITCH:
EXAMPLE: 7/12 PITCH = 30° SLOPE.

FAN #2_DUR5HFA - EXHAUST FAN (ITEM 75)



TOP VIEW

FEATURES:

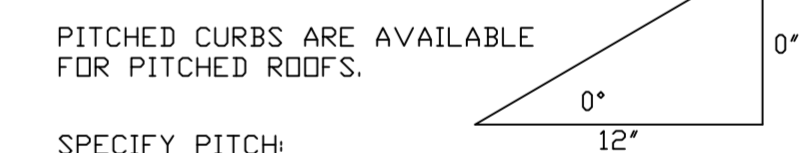
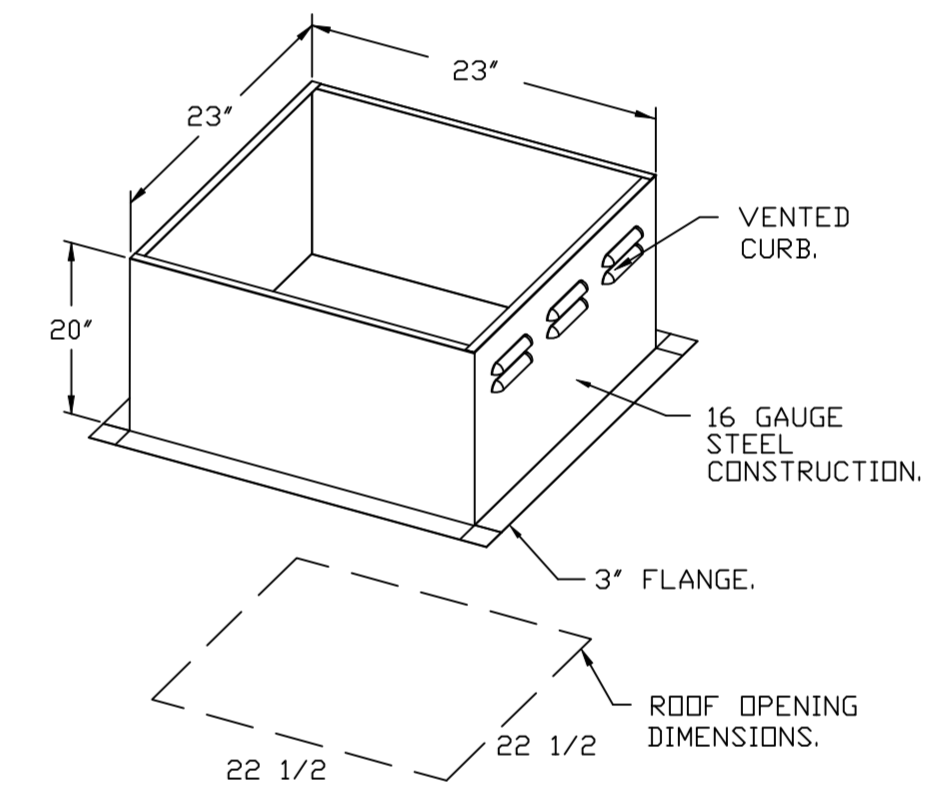
- DIRECT DRIVE CONSTRUCTION (NO BELTS/PULLEYS).
- ROOF MOUNTED FANS.
- RESTAURANT MODEL.
- UL705 AND UL762 AND ULC-S645
- VARIABLE SPEED CONTRL.
- INTERNAL WIRING.
- THERMAL OVERLOAD PROTECTION (SINGLE PHASE).
- HIGH HEAT OPERATION 300°F (149°C).
- GREASE CLASSIFICATION TESTING.
- NEMA 3R SAFETY DISCONNECT SWITCH.

NORMAL TEMPERATURE TEST
EXHAUST FAN MUST OPERATE CONTINUOUSLY WHILE EXHAUSTING AIR AT 300°F (149°C) UNTIL ALL FAN PARTS HAVE REACHED THERMAL EQUILIBRIUM, AND WITHOUT ANY DETERIORATING EFFECTS TO THE FAN WHICH WOULD CAUSE UNSAFE OPERATION.

ABNORMAL FLARE-UP TEST
EXHAUST FAN MUST OPERATE CONTINUOUSLY WHILE EXHAUSTING BURNING GREASE VAPORS AT 600°F (316°C) FOR A PERIOD OF 15 MINUTES WITHOUT THE FAN BECOMING DAMAGED TO ANY EXTENT THAT COULD CAUSE AN UNSAFE CONDITION.

OPTIONS

- GREASE BOX.
- ECM WIRING PACKAGE - PWM SIGNAL FROM ECPM03 PREWIRE (TELCO MOTOR), CCW ROTATION.
- 2 YEAR PARTS WARRANTY.

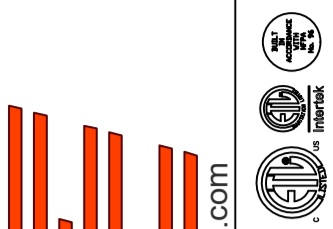


PITCHED CURBS ARE AVAILABLE FOR PITCHED ROOFS.

SPECIFY PITCH:
EXAMPLE: 7/12 PITCH = 30° SLOPE.

REVISIONS

DESCRIPTION	DATE:



www.captiveair.com
reg96@captiveair.com



HBT Foodservice

1126 Swift Street, North Kansas City, MO, 64116 PHONE: (816) 221-8575 FAX: (816) 221-8311 EMAIL: reg96@captiveair.com

Hawaiian Bros Lindbergh MD
5905 S Lindbergh Blvd,
St. Louis, MD, 63123

DATE: 7/13/2022

DWG.#:
5448899

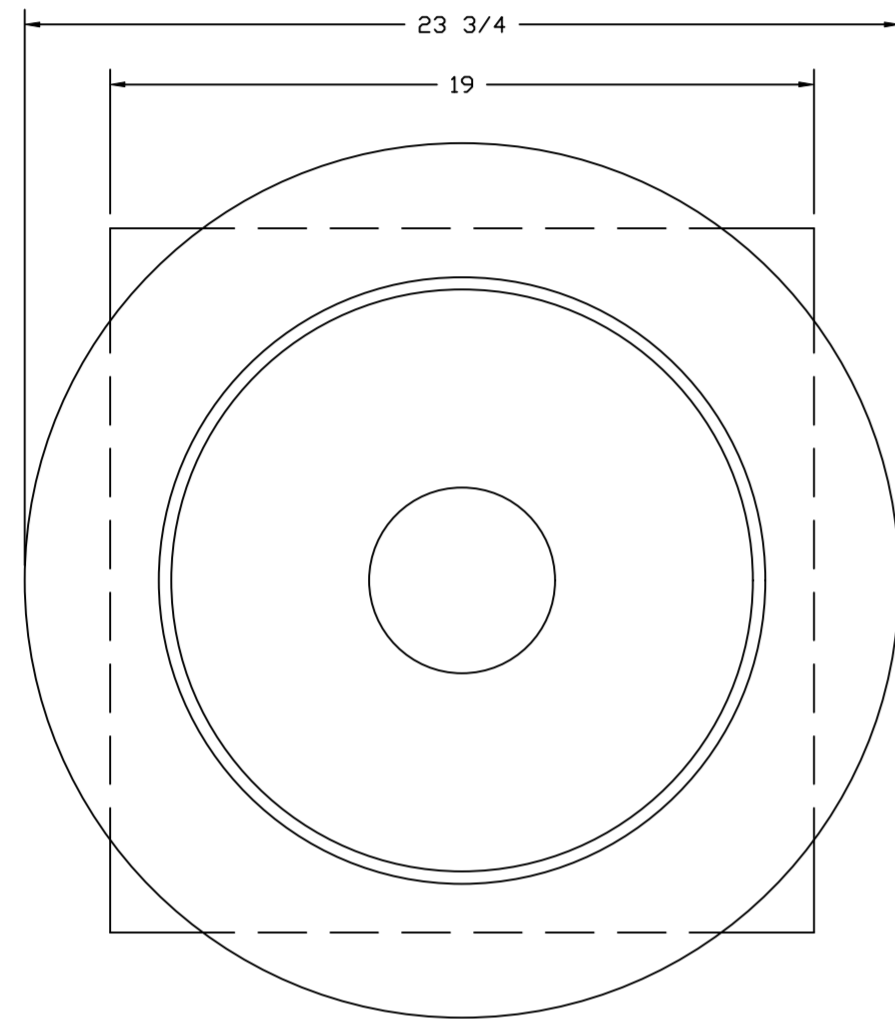
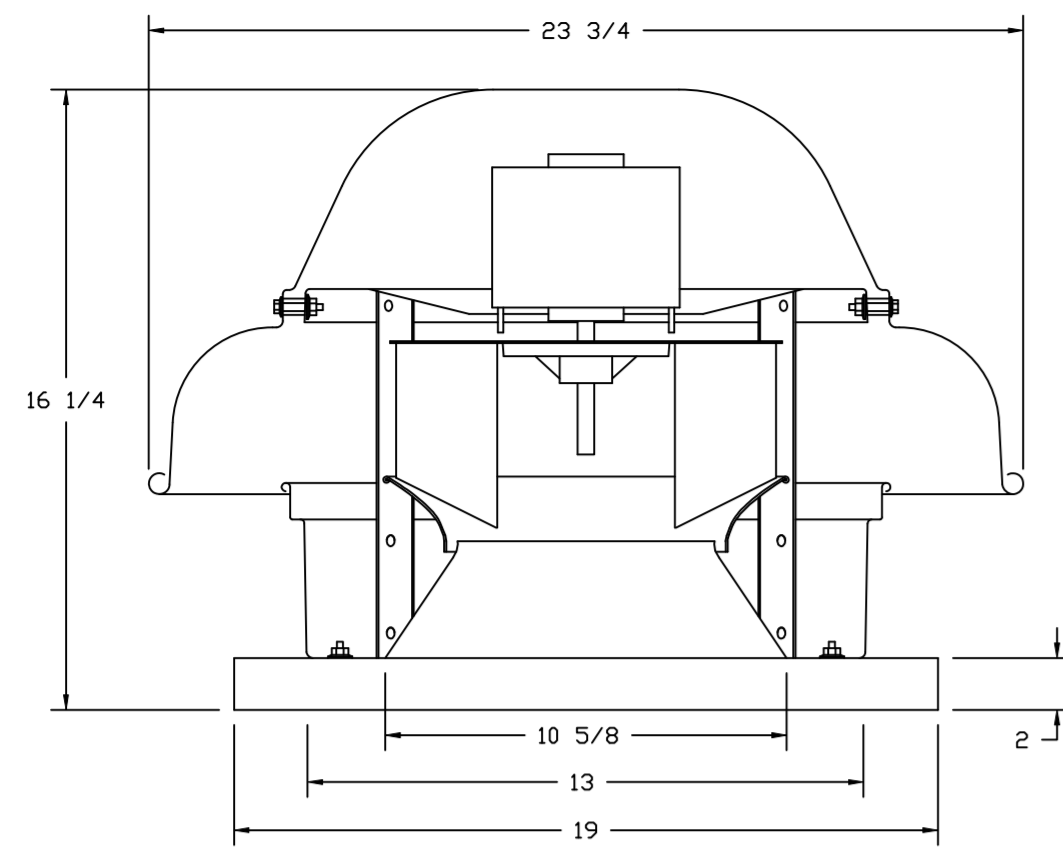
DRAWN BY: michael.co

SCALE:
3/4" = 1'-0"

MASTER DRAWING

SHEET NO.

FANS #3 (CO2 EXHAUST), #4 (BATHROOM EXHAUST) - DR12HFA EXHAUST FAN



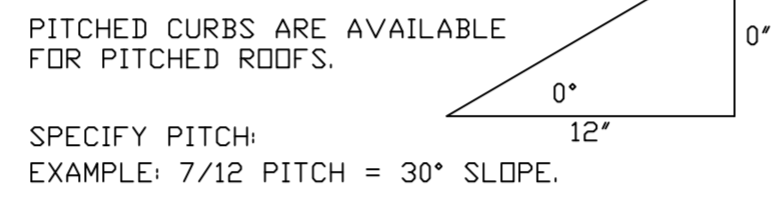
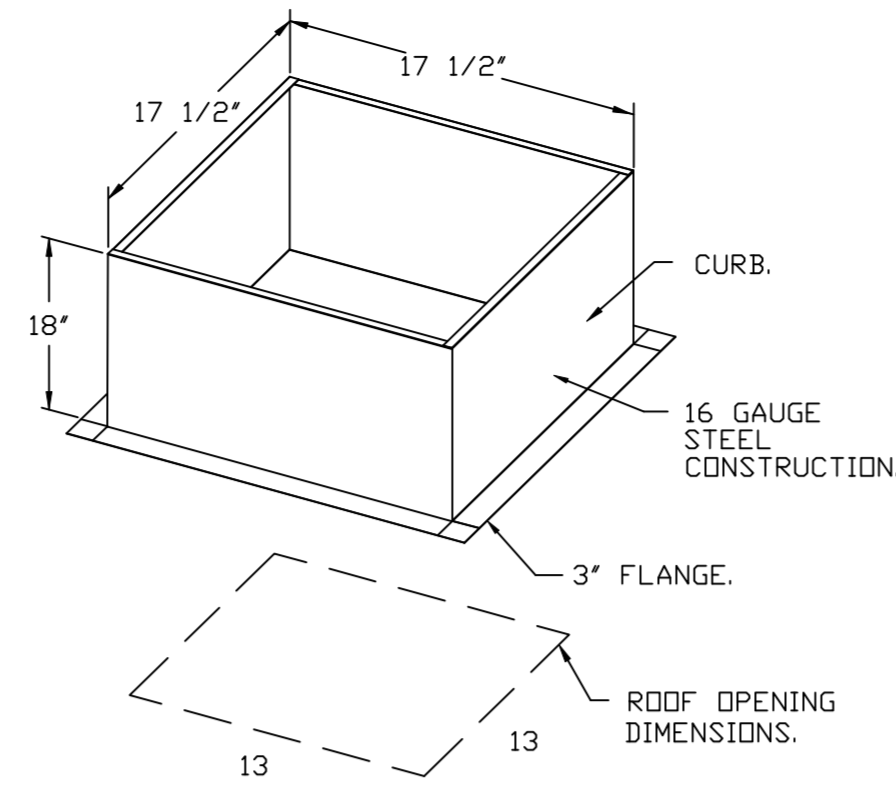
TOP VIEW

FEATURES:

- DIRECT DRIVE CONSTRUCTION (NO BELTS/PULLEYS).
- ROOF MOUNTED FANS.
- UL705.
- SAFETY DISCONNECT.
- STANDARD BIRD SCREEN.
- SPEED CONTROL.

OPTIONS

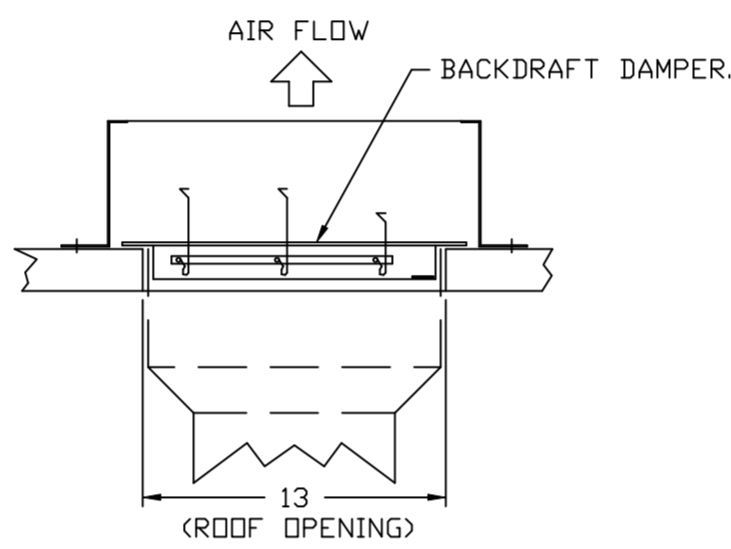
ECM WIRING PACKAGE - MANUAL OR 0-10VDC REFERENCE SPEED CONTROL (TELCO MOTOR), CCW ROTATION. MOTORIZED I 1/2 BDD 120/240V. 2 YEAR PARTS WARRANTY.



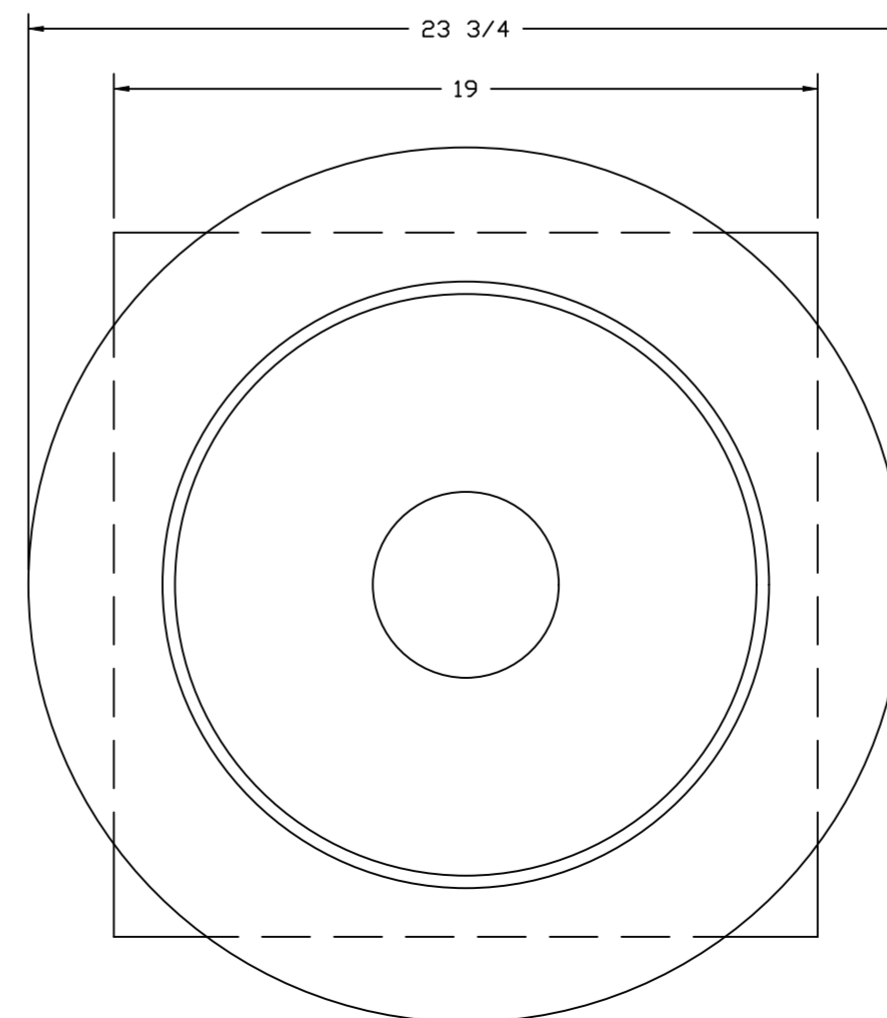
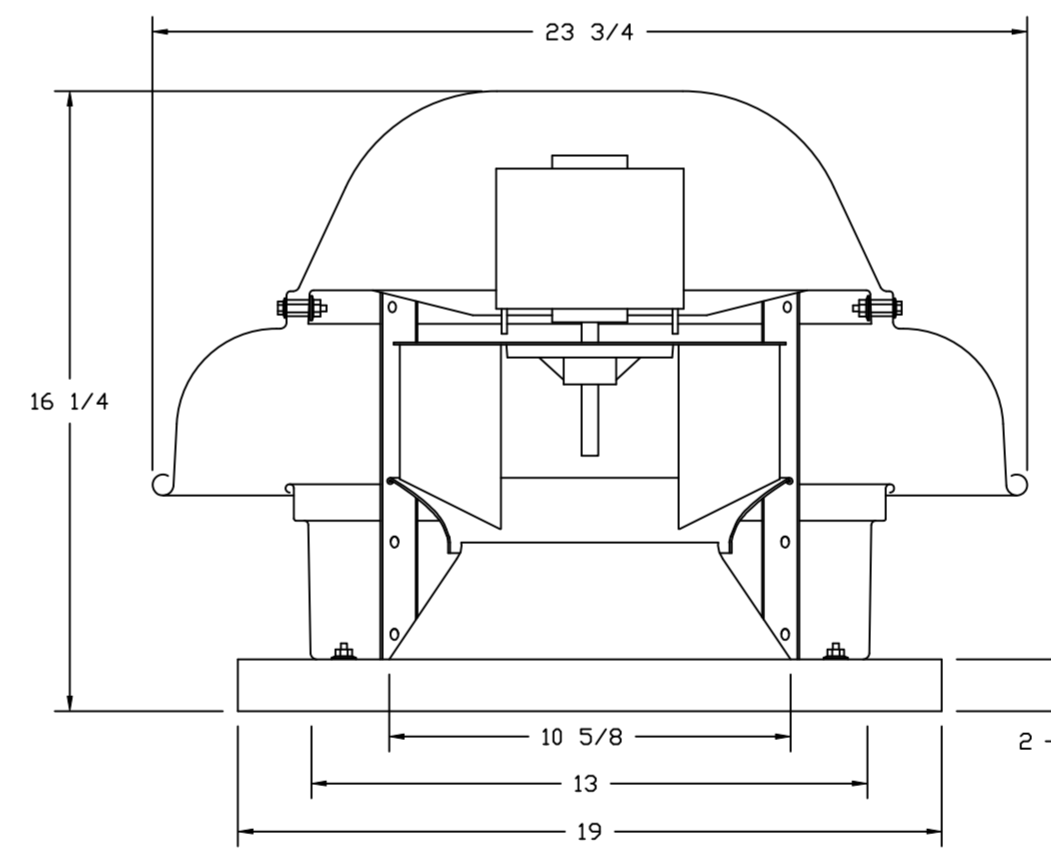
PITCHED CURBS ARE AVAILABLE FOR PITCHED ROOFS.

SPECIFY PITCH:
EXAMPLE: 7/12 PITCH = 30° SLOPE.

BACKDRAFT DAMPER INSTALLATION



FANS #3 (CO2 EXHAUST), #4 (BATHROOM EXHAUST) - DR12HFA EXHAUST FAN



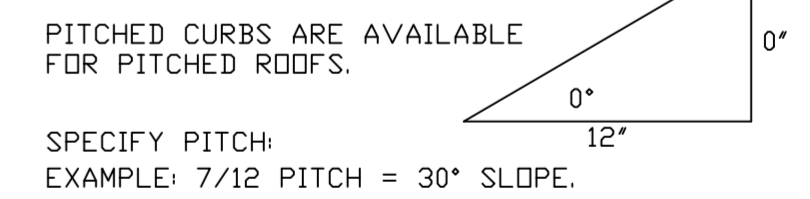
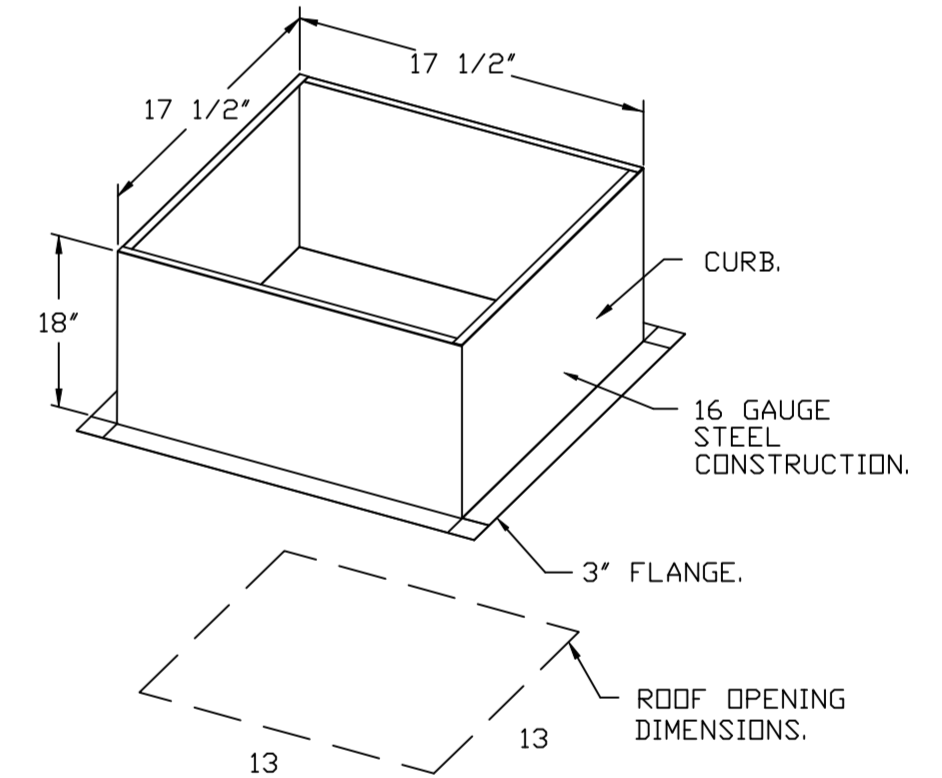
TOP VIEW

FEATURES:

- DIRECT DRIVE CONSTRUCTION (NO BELTS/PULLEYS).
- ROOF MOUNTED FANS.
- UL705.
- SAFETY DISCONNECT.
- STANDARD BIRD SCREEN.
- SPEED CONTROL.

OPTIONS

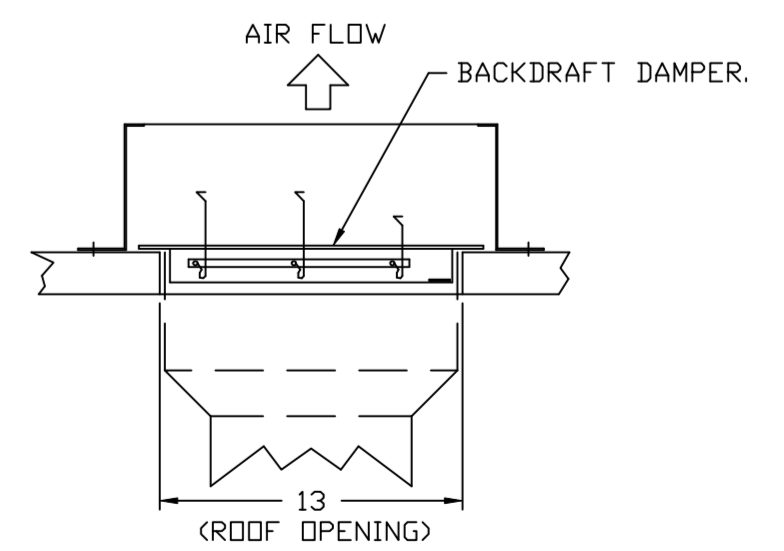
ECM WIRING PACKAGE - MANUAL OR 0-10VDC REFERENCE SPEED CONTROL (TELCO MOTOR), CCW ROTATION. MOTORIZED I 1/2 BDD 120/240V. 2 YEAR PARTS WARRANTY.



PITCHED CURBS ARE AVAILABLE FOR PITCHED ROOFS.

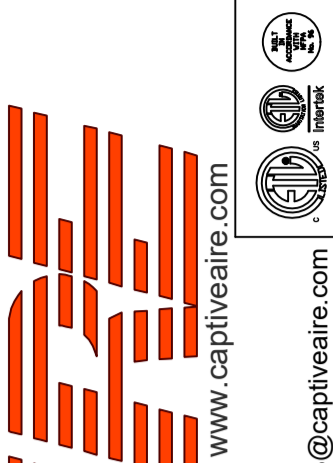
SPECIFY PITCH:
EXAMPLE: 7/12 PITCH = 30° SLOPE.

BACKDRAFT DAMPER INSTALLATION



REVISIONS

DESCRIPTION	DATE



CAPTIVE AIR
www.captiveair.com
HBT Foodservice
1126 Swift Street, North Kansas City, MO, 64116 PHONE: (816) 221-8311 FAX: (816) 221-8311 EMAIL: reg98@captiveair.com

Hawaiian Bros Lindbergh MD
5905 S Lindbergh Blvd,
St. Louis, MO, 63123

DATE: 7/13/2022

DWG.#:
5448899

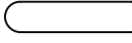
DRAWN BY: michael.co

SCALE:
3/4" = 1'-0"

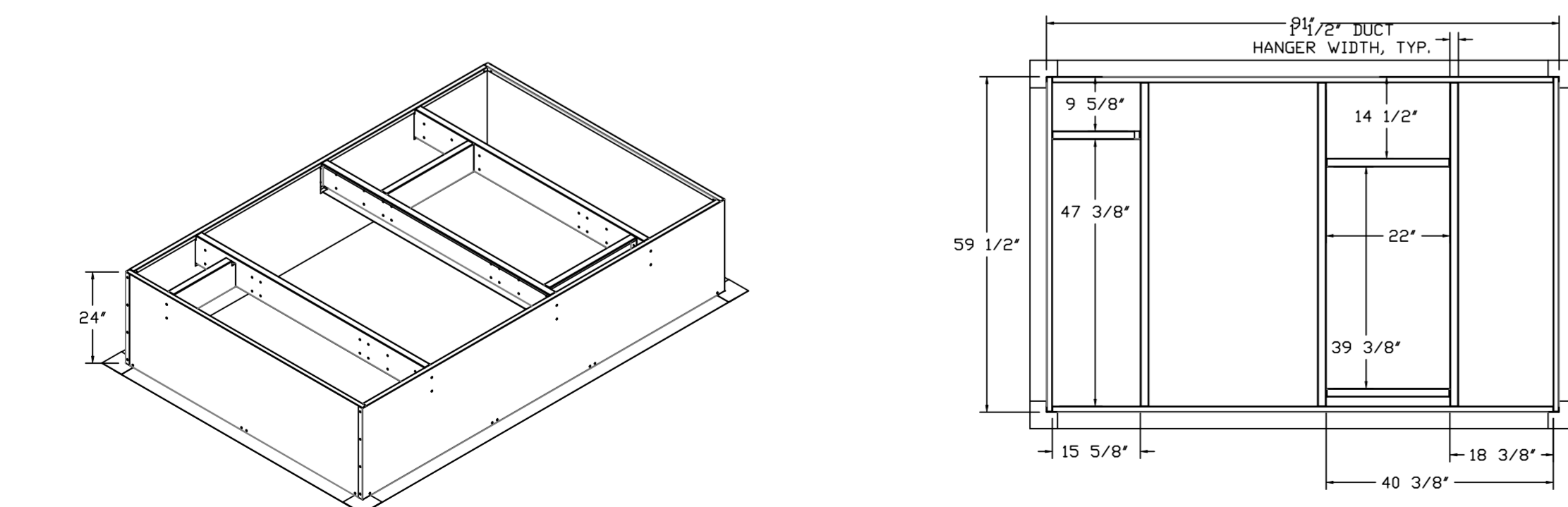
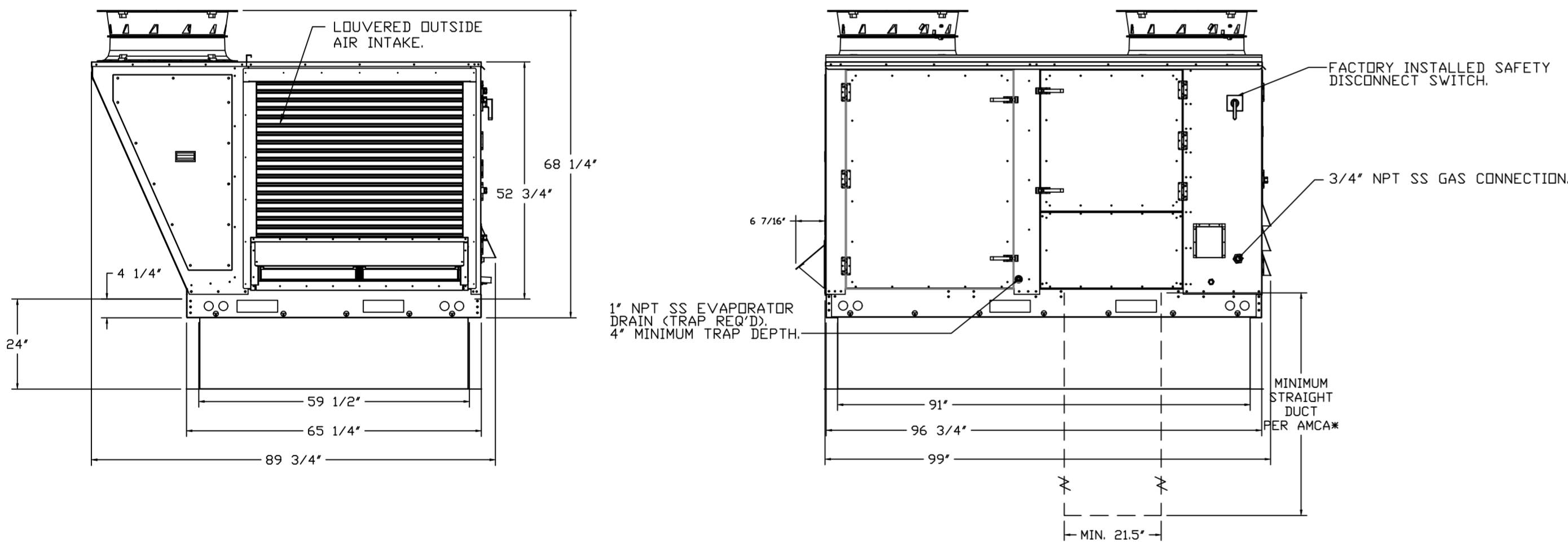
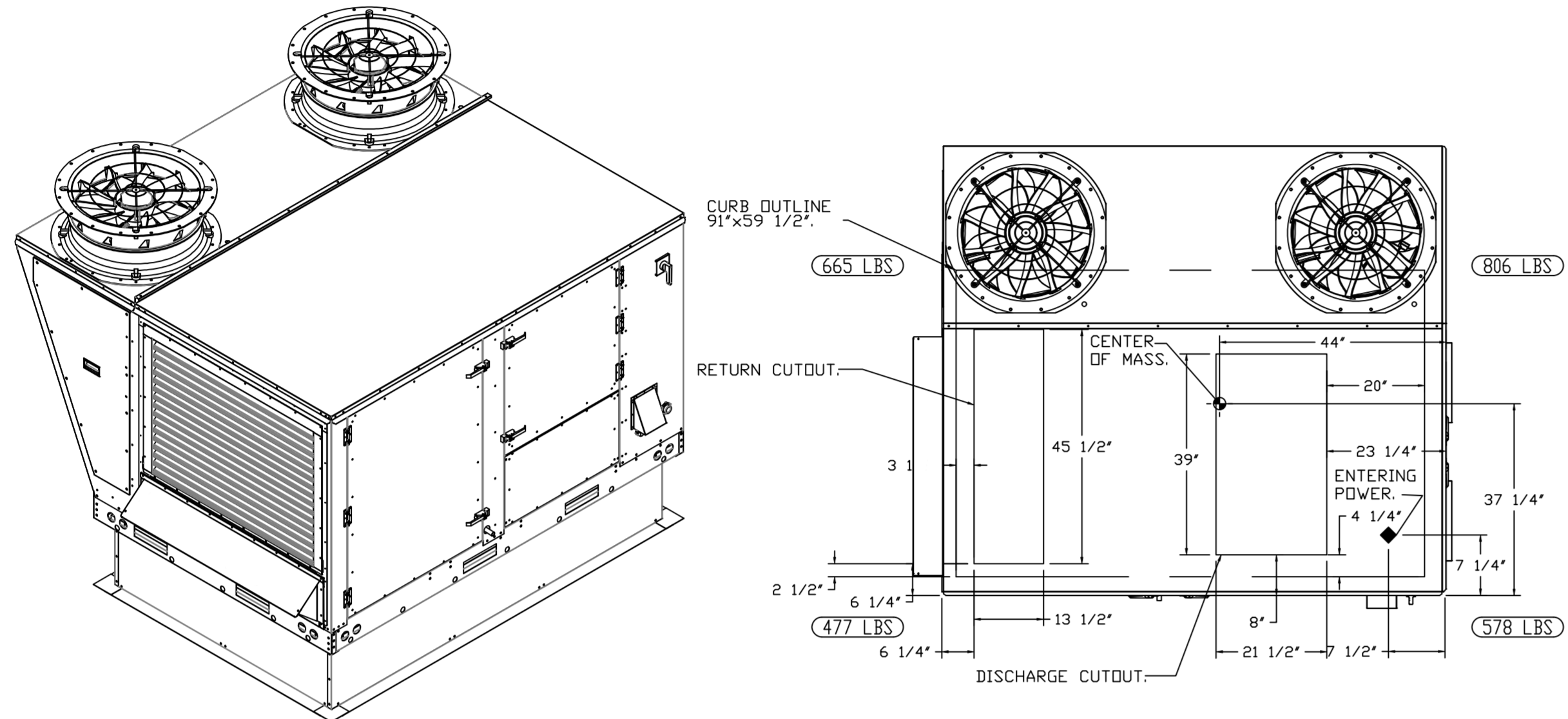
MASTER DRAWING

SHEET NO.
8

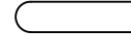
NOTES:

- DO NOT OBSTRUCT OUTSIDE AIR INLET, OUTSIDE AIR COIL OR OUTSIDE AIR FAN.
-  DENOTES CORNER WEIGHT.
- ROOF OPENING MUST BE 2" SMALLER THAN CURB DIMENSIONS IN BOTH DIRECTIONS.

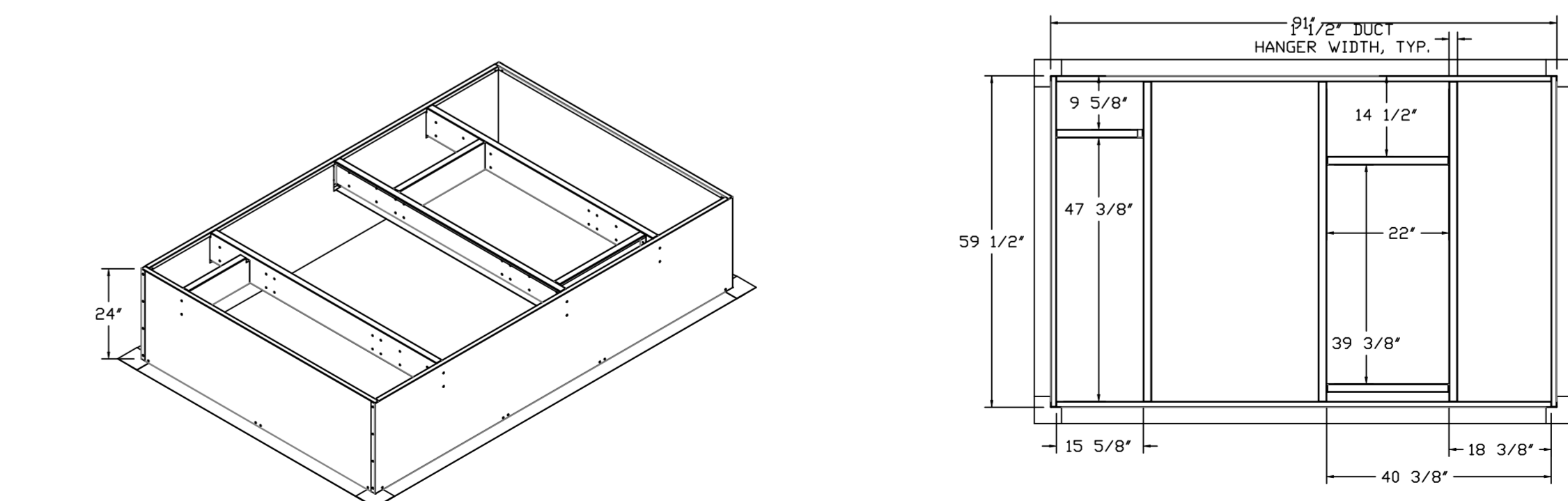
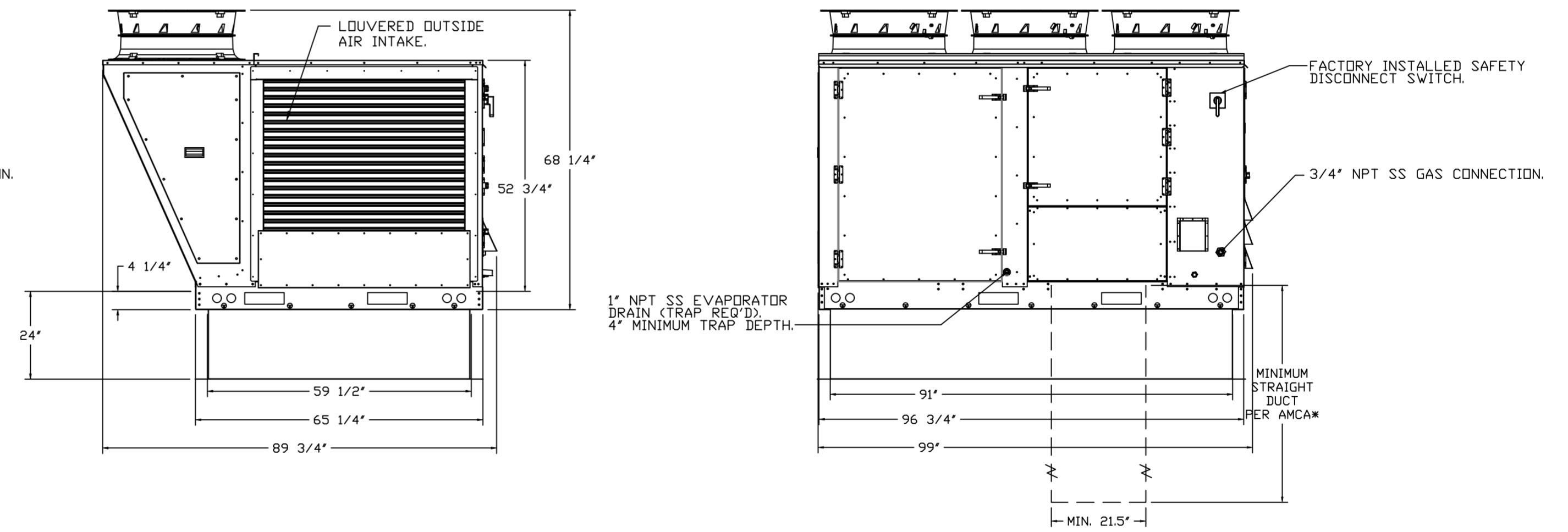
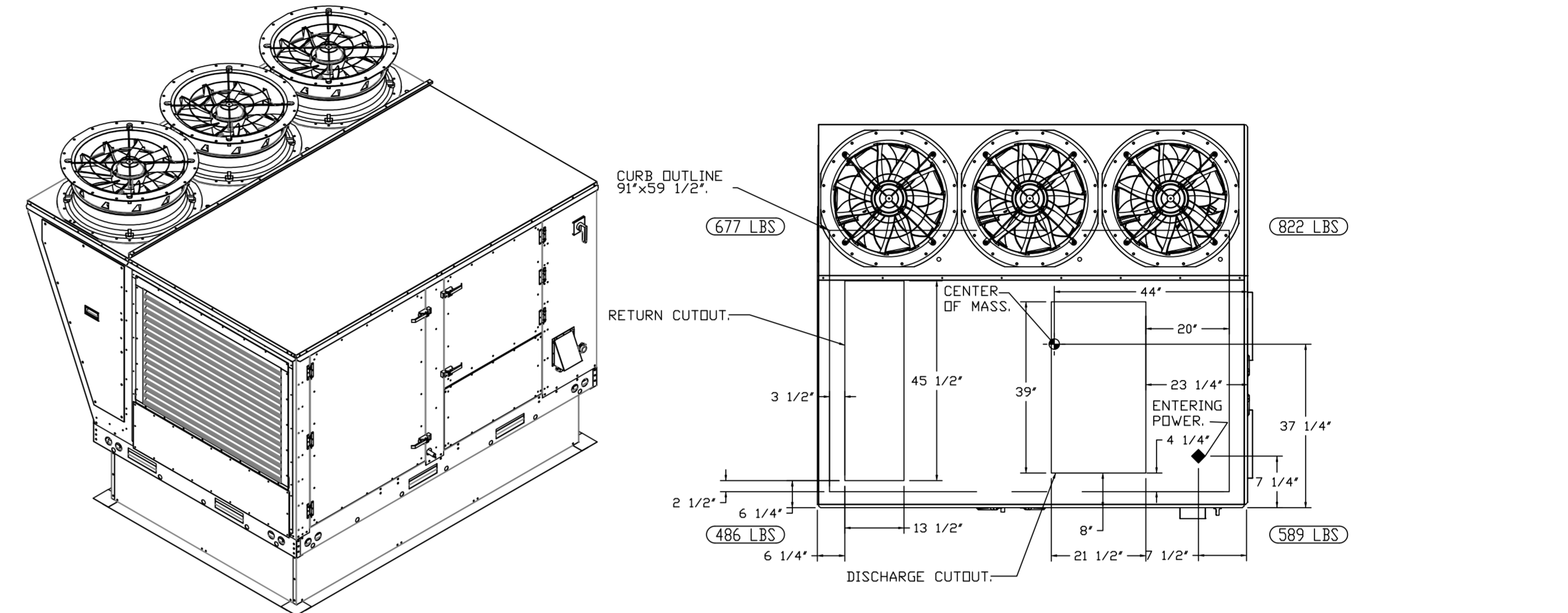
*NOTE: SUPPLY DUCT MUST BE INSTALLED TO MEET SMACNA STANDARDS. A MINIMUM STRAIGHT DUCT LENGTH MUST BE MAINTAINED DOWNSTREAM OF UNIT DISCHARGE AS OUTLINED IN AMCA PUBLICATION 201. WHEN USING RECTANGULAR DUCTWORK, ELBOWS MUST BE RADIUS THROAT, RADIUS BACK WITH TURNING VANES. FLEXIBLE DUCTWORK AND SQUARE THROAT/SQUARE BACK ELBOWS SHOULD NOT BE USED. ANY TRANSITION AND/OR TURNS IN THE DUCTWORK WILL CAUSE SYSTEM EFFECT. SYSTEM EFFECT WILL DRASTICALLY INCREASE STATIC PRESSURE AND REDUCE AIRFLOW. DO NOT RELY ON UNIT TO SUPPORT DUCT IN ANY WAY. FAILURE TO PROPERLY SIZE DUCTWORK MAY CAUSE SYSTEM EFFECTS AND REDUCE PERFORMANCE OF THE EQUIPMENT. SUGGESTED STRAIGHT DUCT SIZE IS 21.5" x 39".



NOTES:

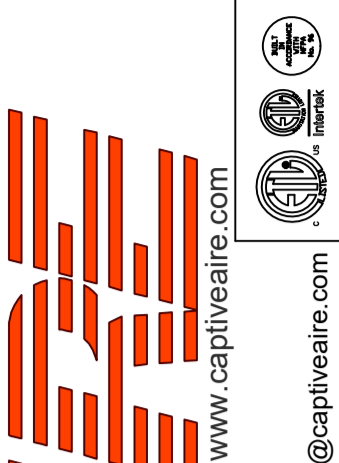
- DO NOT OBSTRUCT OUTSIDE AIR INLET, OUTSIDE AIR COIL OR OUTSIDE AIR FAN.
-  DENOTES CORNER WEIGHT.
- ROOF OPENING MUST BE 2" SMALLER THAN CURB DIMENSIONS IN BOTH DIRECTIONS.

*NOTE: SUPPLY DUCT MUST BE INSTALLED TO MEET SMACNA STANDARDS. A MINIMUM STRAIGHT DUCT LENGTH MUST BE MAINTAINED DOWNSTREAM OF UNIT DISCHARGE AS OUTLINED IN AMCA PUBLICATION 201. WHEN USING RECTANGULAR DUCTWORK, ELBOWS MUST BE RADIUS THROAT, RADIUS BACK WITH TURNING VANES. FLEXIBLE DUCTWORK AND SQUARE THROAT/SQUARE BACK ELBOWS SHOULD NOT BE USED. ANY TRANSITION AND/OR TURNS IN THE DUCTWORK WILL CAUSE SYSTEM EFFECT. SYSTEM EFFECT WILL DRASTICALLY INCREASE STATIC PRESSURE AND REDUCE AIRFLOW. DO NOT RELY ON UNIT TO SUPPORT DUCT IN ANY WAY. FAILURE TO PROPERLY SIZE DUCTWORK MAY CAUSE SYSTEM EFFECTS AND REDUCE PERFORMANCE OF THE EQUIPMENT. SUGGESTED STRAIGHT DUCT SIZE IS 21.5" x 39".



REVISIONS

DESCRIPTION	DATE



CAPTIVE AIR
HBT Foodservice
 www.captiveair.com
 www.hbtfoodservice.com

Hawaiian Bros Lindbergh MD
 5905 S Lindbergh Blvd,
 St. Louis, MD, 63123

DATE: 7/13/2022

DWG.#:
5448899

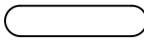
DRAWN BY: michael.co

SCALE:
1/2" = 1'-0"

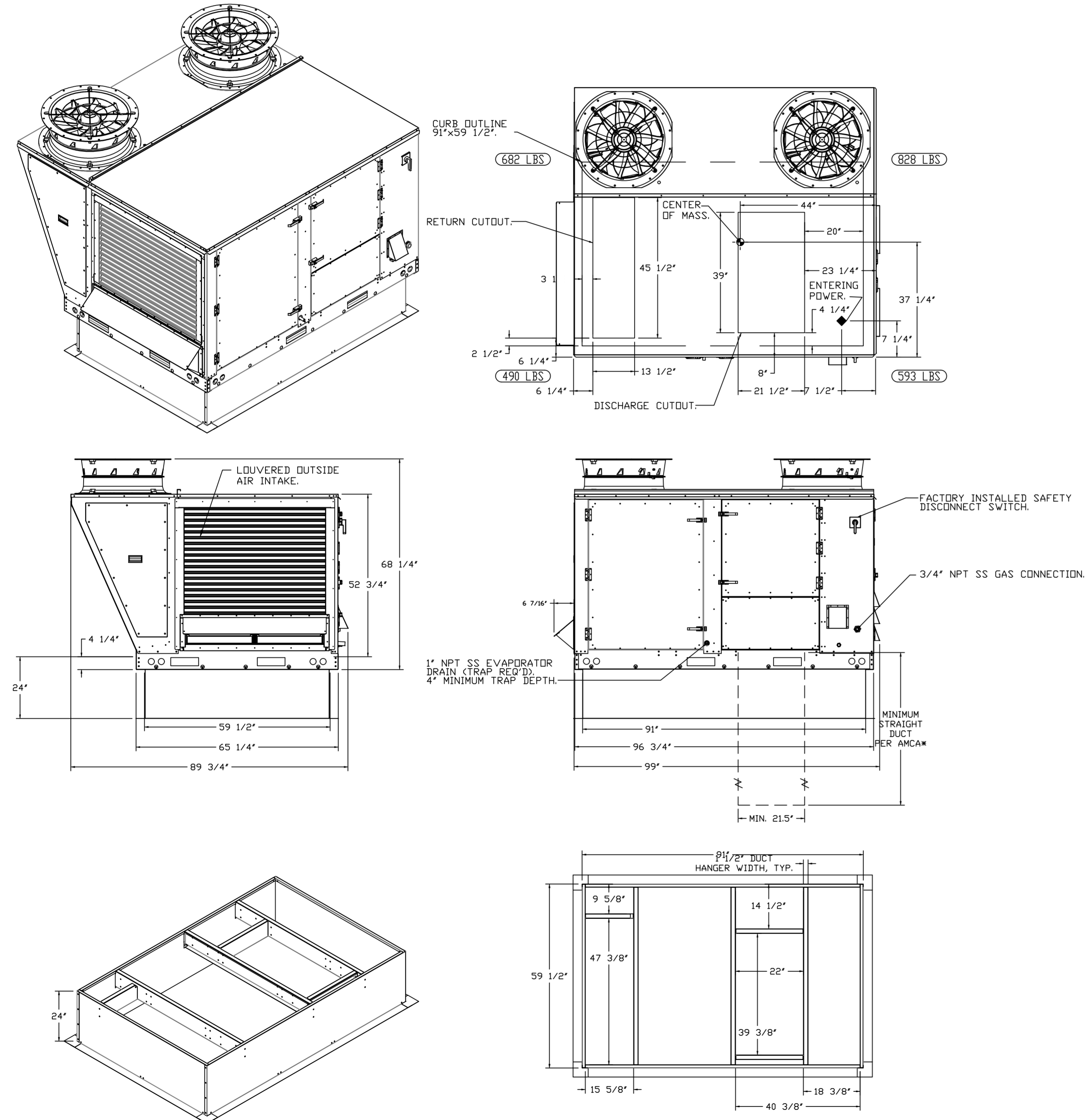
MASTER DRAWING

SHEET NO.
9

NOTES:

- DO NOT OBSTRUCT OUTSIDE AIR INLET, OUTSIDE AIR COIL OR OUTSIDE AIR FAN.
-  DENOTES CORNER WEIGHT.
- ROOF OPENING MUST BE 2" SMALLER THAN CURB DIMENSIONS IN BOTH DIRECTIONS.

*NOTE: SUPPLY DUCT MUST BE INSTALLED TO MEET SMACNA STANDARDS. A MINIMUM STRAIGHT DUCT LENGTH MUST BE MAINTAINED DOWNSTREAM OF UNIT DISCHARGE AS OUTLINED IN AMCA PUBLICATION 201. WHEN USING RECTANGULAR DUCTWORK, ELBOWS MUST BE RADIUS THROAT, RADIUS BACK WITH TURNING VANES. FLEXIBLE DUCTWORK AND SQUARE THROAT/SQUARE BACK ELBOWS SHOULD NOT BE USED. ANY TRANSITION AND/OR TURNS IN THE DUCTWORK WILL CAUSE SYSTEM EFFECT. SYSTEM EFFECT WILL DRASTICALLY INCREASE STATIC PRESSURE AND REDUCE AIRFLOW. DO NOT RELY ON UNIT TO SUPPORT DUCT IN ANY WAY. FAILURE TO PROPERLY SIZE DUCTWORK MAY CAUSE SYSTEM EFFECTS AND REDUCE PERFORMANCE OF THE EQUIPMENT. SUGGESTED STRAIGHT DUCT SIZE IS 21.5" x 39".



REVISIONS	
DESCRIPTION	DATE

CAPTIVE
www.captiveaire.com

HBT Foodservice
1126 Swift Street, North Kansas City, MO, 64116 PHONE: (816) 221-8575 FAX: (816) 221-8311 EMAIL: reg9@captivair.com

Hawaiian Bros Lindbergh MD
5905 S Lindbergh Blvd,
St. Louis, MO, 63123

DATE: 7/13/2022
DWG.#: 5448899
DRAWN BY: michael.co
SCALE: 1/2" = 1'-0"
MASTER DRAWING

SHEET NO. 10

