

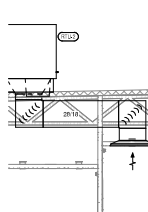


**HVAC PLAN NOTES**

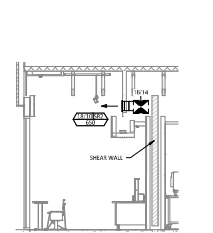
1. SEE ARCHITECTURAL, STRUCTURAL AND MECHANICAL DRAWINGS FOR CEILING MOUNTED EQUIPMENT LOCATION. TYPICAL.
2. POINT EXHAUSTION THROUGH DINING ROOM SUPPLY REGISTERS BLACK. TYPICAL. PENETRATIONS THROUGH SHEAR WALLS SHALL BE LIMITED TO 10" DIAMETER (OR A GROUP OF PENETRATIONS SHALL CONTAINED WITHIN 10" DIAMETER). IF LARGER PENETRATIONS OR GROUPS OF PENETRATIONS ARE REQUIRED, COORDINATE WITH STRUCTURAL ENGINEER FOR APPROPRIATE BRACING. SEE STRUCTURAL DRAWINGS FOR SHEAR WALL LOCATION.
3. 2" DIA. DUCT UP FOR TRANSITION TO RTU-1 RETURN CONNECTION IN ROOF CURB. RTU-1 SHALL HAVE AN INTEGRAL SMOKE DETECTOR LOCATED IN THE RETURN AIR STREAM. INTER-CURB SMOKE DETECTOR FOR RTU-1 OPERATION.
4. 3" DIA. DUCT UP FOR TRANSITION TO RTU-2 RETURN CONNECTION IN ROOF CURB. RTU-2 SHALL HAVE AN INTEGRAL SMOKE DETECTOR LOCATED IN THE RETURN AIR STREAM. INTER-CURB SMOKE DETECTOR FOR RTU-2 OPERATION.
5. 2" DIA. DUCT UP FROM MECHANICAL SUPPLY THROUGH ROOF. TRANSITION TO RTU-1 SUPPLY CONNECTION IN ROOF CURB.
6. 2" DIA. DUCT UP FROM MECHANICAL SUPPLY TO RTU-2 SUPPLY CONNECTION. TRANSITION IN ROOF CURB.
7. 2" DIA. DUCT UP FROM HOOD THROUGH ROOF TO FF-1 COMPLIANT WITH NFPA 98. PROVIDE SMOKEPROOF FLASHING WITH PENETRATION ON 2" SHEET METAL THROUGH DUCT.
8. 2" DIA. DUCT THROUGH ROOF TO FF-2.
9. 2" DIA. DUCT THROUGH ROOF TO FF-3.
10. 2" DIA. DUCT THROUGH ROOF TO FF-4.
11. 2" DIA. DUCT THROUGH ROOF TO FF-5.
12. 2" DIA. DUCT THROUGH ROOF TO FF-6.
13. 2" DIA. DUCT THROUGH ROOF TO FF-7.
14. 2" DIA. DUCT THROUGH ROOF TO FF-8.
15. 2" DIA. DUCT THROUGH ROOF TO FF-9.
16. 2" DIA. DUCT THROUGH ROOF TO FF-10.
17. 2" DIA. DUCT THROUGH ROOF TO FF-11.
18. 2" DIA. DUCT THROUGH ROOF TO FF-12.
19. 2" DIA. DUCT THROUGH ROOF TO FF-13.
20. 2" DIA. DUCT THROUGH ROOF TO FF-14.
21. 2" DIA. DUCT THROUGH ROOF TO FF-15.
22. 2" DIA. DUCT THROUGH ROOF TO FF-16.
23. 2" DIA. DUCT THROUGH ROOF TO FF-17.
24. 2" DIA. DUCT THROUGH ROOF TO FF-18.
25. 2" DIA. DUCT THROUGH ROOF TO FF-19.
26. 2" DIA. DUCT THROUGH ROOF TO FF-20.
27. 2" DIA. DUCT THROUGH ROOF TO FF-21.
28. 2" DIA. DUCT THROUGH ROOF TO FF-22.
29. 2" DIA. DUCT THROUGH ROOF TO FF-23.
30. 2" DIA. DUCT THROUGH ROOF TO FF-24.
31. 2" DIA. DUCT THROUGH ROOF TO FF-25.
32. 2" DIA. DUCT THROUGH ROOF TO FF-26.
33. 2" DIA. DUCT THROUGH ROOF TO FF-27.
34. 2" DIA. DUCT THROUGH ROOF TO FF-28.
35. 2" DIA. DUCT THROUGH ROOF TO FF-29.
36. 2" DIA. DUCT THROUGH ROOF TO FF-30.
37. 2" DIA. DUCT THROUGH ROOF TO FF-31.
38. 2" DIA. DUCT THROUGH ROOF TO FF-32.
39. 2" DIA. DUCT THROUGH ROOF TO FF-33.
40. 2" DIA. DUCT THROUGH ROOF TO FF-34.
41. 2" DIA. DUCT THROUGH ROOF TO FF-35.
42. 2" DIA. DUCT THROUGH ROOF TO FF-36.
43. 2" DIA. DUCT THROUGH ROOF TO FF-37.
44. 2" DIA. DUCT THROUGH ROOF TO FF-38.
45. 2" DIA. DUCT THROUGH ROOF TO FF-39.
46. 2" DIA. DUCT THROUGH ROOF TO FF-40.
47. 2" DIA. DUCT THROUGH ROOF TO FF-41.
48. 2" DIA. DUCT THROUGH ROOF TO FF-42.
49. 2" DIA. DUCT THROUGH ROOF TO FF-43.
50. 2" DIA. DUCT THROUGH ROOF TO FF-44.
51. 2" DIA. DUCT THROUGH ROOF TO FF-45.
52. 2" DIA. DUCT THROUGH ROOF TO FF-46.
53. 2" DIA. DUCT THROUGH ROOF TO FF-47.
54. 2" DIA. DUCT THROUGH ROOF TO FF-48.
55. 2" DIA. DUCT THROUGH ROOF TO FF-49.
56. 2" DIA. DUCT THROUGH ROOF TO FF-50.
57. 2" DIA. DUCT THROUGH ROOF TO FF-51.
58. 2" DIA. DUCT THROUGH ROOF TO FF-52.
59. 2" DIA. DUCT THROUGH ROOF TO FF-53.
60. 2" DIA. DUCT THROUGH ROOF TO FF-54.
61. 2" DIA. DUCT THROUGH ROOF TO FF-55.
62. 2" DIA. DUCT THROUGH ROOF TO FF-56.
63. 2" DIA. DUCT THROUGH ROOF TO FF-57.
64. 2" DIA. DUCT THROUGH ROOF TO FF-58.
65. 2" DIA. DUCT THROUGH ROOF TO FF-59.
66. 2" DIA. DUCT THROUGH ROOF TO FF-60.
67. 2" DIA. DUCT THROUGH ROOF TO FF-61.
68. 2" DIA. DUCT THROUGH ROOF TO FF-62.
69. 2" DIA. DUCT THROUGH ROOF TO FF-63.
70. 2" DIA. DUCT THROUGH ROOF TO FF-64.
71. 2" DIA. DUCT THROUGH ROOF TO FF-65.
72. 2" DIA. DUCT THROUGH ROOF TO FF-66.
73. 2" DIA. DUCT THROUGH ROOF TO FF-67.
74. 2" DIA. DUCT THROUGH ROOF TO FF-68.
75. 2" DIA. DUCT THROUGH ROOF TO FF-69.
76. 2" DIA. DUCT THROUGH ROOF TO FF-70.
77. 2" DIA. DUCT THROUGH ROOF TO FF-71.
78. 2" DIA. DUCT THROUGH ROOF TO FF-72.
79. 2" DIA. DUCT THROUGH ROOF TO FF-73.
80. 2" DIA. DUCT THROUGH ROOF TO FF-74.
81. 2" DIA. DUCT THROUGH ROOF TO FF-75.
82. 2" DIA. DUCT THROUGH ROOF TO FF-76.
83. 2" DIA. DUCT THROUGH ROOF TO FF-77.
84. 2" DIA. DUCT THROUGH ROOF TO FF-78.
85. 2" DIA. DUCT THROUGH ROOF TO FF-79.
86. 2" DIA. DUCT THROUGH ROOF TO FF-80.
87. 2" DIA. DUCT THROUGH ROOF TO FF-81.
88. 2" DIA. DUCT THROUGH ROOF TO FF-82.
89. 2" DIA. DUCT THROUGH ROOF TO FF-83.
90. 2" DIA. DUCT THROUGH ROOF TO FF-84.
91. 2" DIA. DUCT THROUGH ROOF TO FF-85.
92. 2" DIA. DUCT THROUGH ROOF TO FF-86.
93. 2" DIA. DUCT THROUGH ROOF TO FF-87.
94. 2" DIA. DUCT THROUGH ROOF TO FF-88.
95. 2" DIA. DUCT THROUGH ROOF TO FF-89.
96. 2" DIA. DUCT THROUGH ROOF TO FF-90.
97. 2" DIA. DUCT THROUGH ROOF TO FF-91.
98. 2" DIA. DUCT THROUGH ROOF TO FF-92.
99. 2" DIA. DUCT THROUGH ROOF TO FF-93.
100. 2" DIA. DUCT THROUGH ROOF TO FF-94.
101. 2" DIA. DUCT THROUGH ROOF TO FF-95.
102. 2" DIA. DUCT THROUGH ROOF TO FF-96.
103. 2" DIA. DUCT THROUGH ROOF TO FF-97.
104. 2" DIA. DUCT THROUGH ROOF TO FF-98.
105. 2" DIA. DUCT THROUGH ROOF TO FF-99.
106. 2" DIA. DUCT THROUGH ROOF TO FF-100.

**HVAC PLAN NOTES**

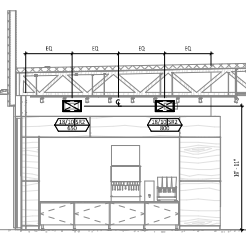
30. INSTALL REMOTE CONDITIONING UNIT FOR WALK-IN COOLER ON ROOF AS DETAIL IN THE ARCHITECTURAL AND STRUCTURAL DRAWINGS. INSTALL REFRIGERANT LINE 18" THERMOSTATIC EXPANSION VALVE, SOLID STATE CONTROL, SIGHT GLASS, FILTER DRIER, PRESSURE CONTROL, LOW AMBIENT CONTROL, AND WALK-IN COOLER. TRAP AND SLOPE REFRIGERANT LINES PER MANUFACTURER'S RECOMMENDATIONS. INSTALLATION SHALL COMPLY WITH ASHRAE/ANSI STANDARD 15. INSTALL THE REFRIGERANT LINE SET UNDER THE ROOF DECK TO WITHIN 3' OF THE CONDENSING UNIT. CUT 2" DIA. HOLE IN WALK-IN COOLER ROOF FOR REFRIGERANT LINE SET AND SEAL PER THE COOLER MANUFACTURER'S INSTALLATION INSTRUCTIONS AFTER LINE SET IS INSTALLED.
31. INSTALL REMOTE CONDENSER FOR ICE MACHINE ON ROOF AS DETAIL IN THE ARCHITECTURAL AND STRUCTURAL DRAWINGS. INSTALL REFRIGERANT LINE SET, THERMOSTATIC EXPANSION VALVE, SOLID STATE VALVE, TEMPERATURE CONTROL, SIGHT GLASS, FILTER DRIER, PRESSURE CONTROL, LOW AMBIENT CONTROL, AND WALK-IN COOLER. TRAP AND SLOPE REFRIGERANT LINES PER MANUFACTURER'S RECOMMENDATIONS. INSTALLATION SHALL COMPLY WITH ASHRAE/ANSI STANDARD 15. INSTALL THE REFRIGERANT LINE SET UNDER THE ROOF DECK TO WITHIN 3' OF THE REMOTE CONDENSER. IF REFRIGERANT PIPING TO ICE MACHINE PENETRO TO BUILD UP OVERHEAD WITH A STAINLESS STEEL SINK AS SHOWN IN THE ARCHITECTURAL DRAWINGS.
32. INSTALL SCOOTER EQUIPMENT PER MANUFACTURER'S INSTALLATION INSTRUCTIONS AND AS DETAIL IN THE ARCHITECTURAL AND STRUCTURAL DRAWINGS.
33. INSTALL EXHAUST FAN FF-1 PER DETAIL. VERIFY AND AS DETAIL IN THE ARCHITECTURAL AND STRUCTURAL DRAWINGS. INSTALL UL-CLEARCUT PROGRAMMED SYSTEM FURNISHED BY CHIPOTLE ON EXHAUST FAN FF-1.
34. PROVIDE SUPPLY REGISTER CONNECTION TO SUPPLY SYSTEM PER DETAIL. TYPICAL.
35. PROVIDE AUDIO VISUAL REMOTE SMOKE DETECTOR AND NOTIFICATION WITH REMOTE KEY OPERATED RESET. WIRE AS DETAIL. BACK TO HOOD ROOMS SECTION. WALK-IN COOLER ROOF. TYPICAL.
36. INSTALL BEMO HALO AIR FURNISH FURNISHED BY BEMO IN RTU PER DETAIL. SET ELECTRICAL DRAWINGS FOR POWER CONNECTION INFORMATION. INSTALL BY WIRING IN FACE OF FACE OF ENCLOSURE PER DETAIL AND ON ANY RTU ACCESS DOORS THROUGH. BEMO BEMO HALO SMOKE DETECTOR IS OPENED.
37. SEE DETAIL.
38. ADJUST SUPPLY REGISTERS SO THAT SUPPLY AIR SETS WALL ON OPPOSITE SIDE OF ROOM AT APPROXIMATELY 7' AFF WITH NO BEAT'S FEEL IN THE SPRING ROOM.



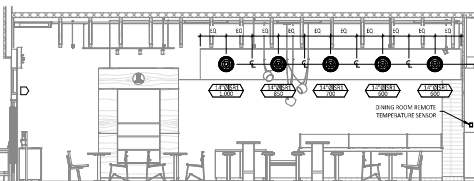
**DINING RETURN SECTION**  
1/4" = 1'-0"



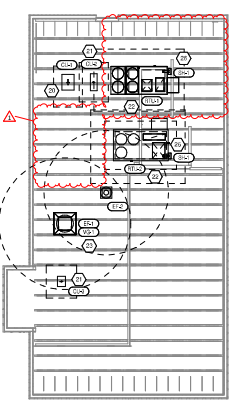
**HVAC DINING ROOM SECTION**  
1/4" = 1'-0"



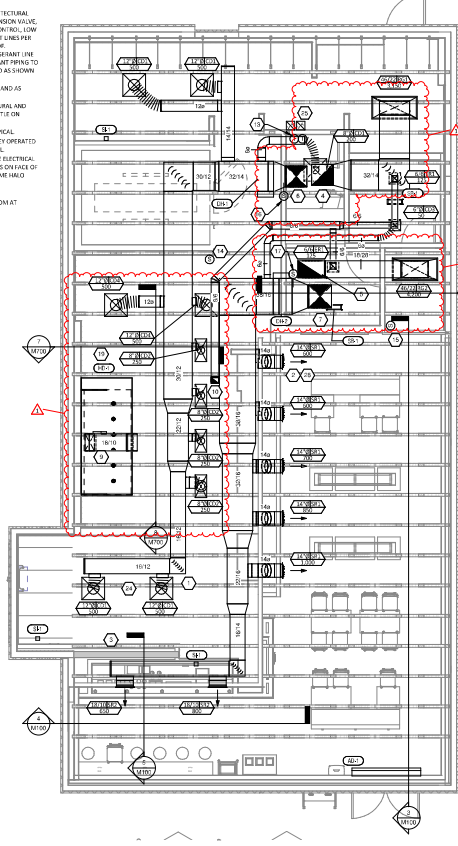
**HVAC DINING ROOM SECTION**  
1/4" = 1'-0"



**HVAC DINING ROOM SECTION**  
1/4" = 1'-0"



**HVAC ROOF PLAN**  
1/4" = 1'-0"



**HVAC FLOOR PLAN**  
1/4" = 1'-0"

**NATIONAL**  
4635 Truman Blvd. Suite 250  
Hilliard, Ohio 43026  
Phone: (614) 751-6810  
Fax: (614) 552-6240  
Contact: Jason L. Decker  
(614) 751-9610  
JDecker@nationalengineering.com

CHIPOTLE MEXICAN GRILL  
CHIPOTLE MEXICAN GRILL, INC.  
10000 WILSON BLVD., SUITE 100  
COLUMBIANA, OHIO 43081  
WWW.CHIPOTLE.COM

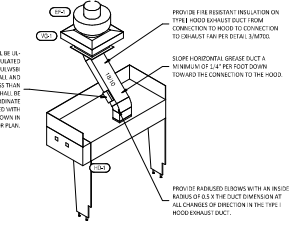
STORE NO.: 5115  
CALIFORNIA  
Three Notch Rd & Oak Crest Dr  
California, MD 20619

Date	By	Checked
22.APR.2009	JLD	JLD
02.AUG.2009	JLD	JLD
28.JUN.2012	JLD	JLD
05.FEB.2014	JLD	JLD

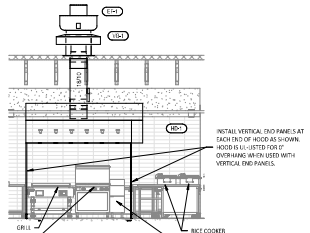
Project: 230117  
Title: HVAC PLAN

**M100**

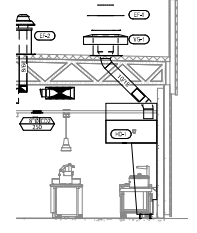




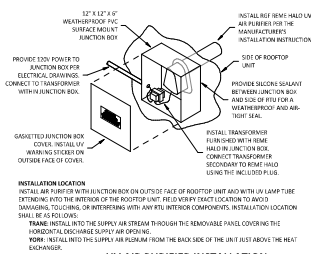
**HOOD EXHAUST ISOMETRIC**  
NOT TO SCALE



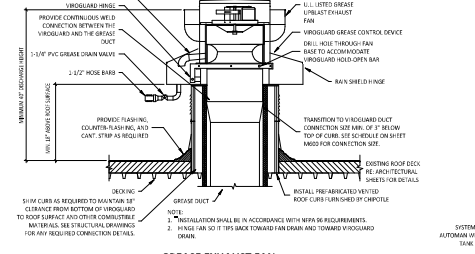
**HOOD ELEVATION**  
1/4" = 1'-0"



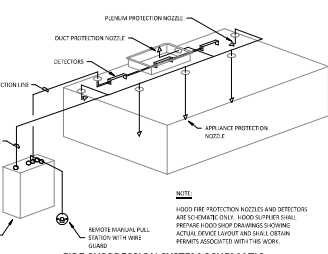
**DUCT SECTION AT HOOD**  
1/8" = 1'-0"



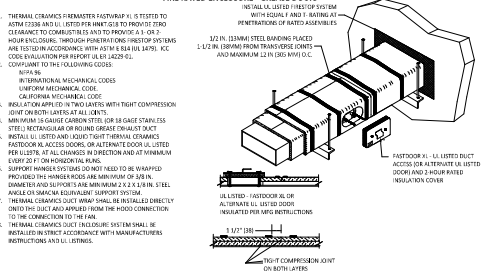
**UV AIR PURIFIER INSTALLATION**  
NOT TO SCALE



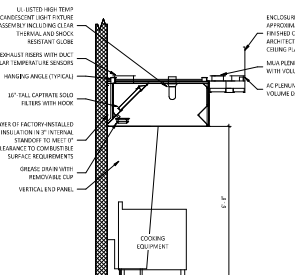
**GREASE EXHAUST FAN**  
NOT TO SCALE



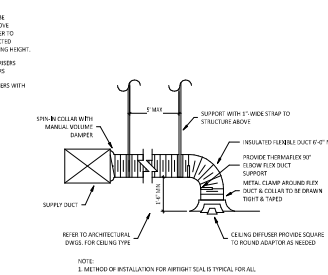
**FIRE SUPPRESSION SYSTEM SCHEMATIC**  
NOT TO SCALE



**FIREMASTER DUCT WRAP - UL HNKT-G18**  
NOT TO SCALE



**HOOD SECTION VIEW**  
NOT TO SCALE



**DIFFUSER CONNECTION**  
NOT TO SCALE

**NATIONAL**  
4036 Truman Blvd. Suite 250  
Hilliard, Ohio 43026  
Phone: (614) 751-0810  
Fax: (614) 552-6240  
Contact: Jason L. Decker  
(614) 751-9610  
JDecker@nationalengineering.com

**CHIPOTLE MEXICAN GRILL**  
CHIPOTLE MEXICAN GRILL, INC.  
20000 WILSON AVENUE  
COLUMBIA, OHIO 43081  
TEL: (614) 751-0810  
WWW.CHIPOTLE.COM

STORE NO.: 5115  
CALIFORNIA  
Three Notch Rd & Oak Crest Dr  
California, MD 20619

DATE	DESCRIPTION	BY	CHKD
11/28/2019	ISSUED FOR PERMITS	JL	
02/28/2020	PERMITS	JL	
03/03/2020	ISSUE FOR BIDD	JL	

HVAC DETAILS

M700