

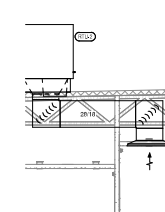


**HVAC PLAN NOTES**

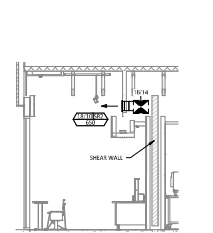
1. SEE ARCHITECTURAL, STRUCTURAL DRAWINGS FOR CEILING MOUNTED EQUIPMENT LOCATION. TYPICAL.
2. POINT EXHAUSTION VIBRATOR THROUGH DINING ROOM SUPPLY REGISTERS BLACK. TYPICAL. PENETRATIONS THROUGH SHEAR WALLS SHALL BE LIMITED TO 10" DIAMETER (OR A GROUP OF PENETRATIONS SHALL CONTAINED WITHIN 10" DIAMETER). IF LARGER PENETRATIONS OR GROUPS OF PENETRATIONS ARE REQUIRED, COORDINATE WITH STRUCTURAL ENGINEER FOR APPROPRIATE BRACING. SEE STRUCTURAL DRAWINGS FOR SHEAR WALL LOCATION.
3. 2" DIA. DUCT UP FOR TRANSITION TO RTU-1 RETURN CONNECTION IN ROOF CURB. RTU-1 SHALL HAVE AN INTEGRAL SMOKE DETECTOR LOCATED IN THE RETURN AIR STREAM. INTEGRAL SMOKE DETECTOR FOR RTU-1 OPERATION.
4. 3" DIA. DUCT UP FOR TRANSITION TO RTU-2 RETURN CONNECTION IN ROOF CURB. RTU-2 SHALL HAVE AN INTEGRAL SMOKE DETECTOR LOCATED IN THE RETURN AIR STREAM. INTEGRAL SMOKE DETECTOR FOR RTU-2 OPERATION.
5. 2" DIA. DUCT UP FROM MECHANICAL SUPPLY THROUGH ROOF. TRANSITION TO RTU-1 SUPPLY CONNECTION IN ROOF CURB.
6. 2" DIA. DUCT UP FROM MECHANICAL SUPPLY TO RTU-2 SUPPLY CONNECTION. TRANSITION IN ROOF CURB.
7. 10" DIA. DUCT UP FROM HOOD THROUGH ROOF TO EF-1 COMPLIANT WITH NFPA 98. PROVIDE BRASS/STAINLESS STEEL PENETRATION PROTECTORS ON 2" SHEAR AT ELEVATION OF GRAVEL DUCT. PROVIDE 1" AIR GAP THROUGH ROOF TO D-2.
8. 10" DIA. DUCT UP FROM HOOD THROUGH ROOF TO EF-2 COMPLIANT WITH NFPA 98. PROVIDE BRASS/STAINLESS STEEL PENETRATION PROTECTORS ON 2" SHEAR AT ELEVATION OF GRAVEL DUCT. PROVIDE 1" AIR GAP THROUGH ROOF TO D-2.
9. 10" DIA. DUCT UP FROM HOOD THROUGH ROOF TO EF-3 COMPLIANT WITH NFPA 98. PROVIDE BRASS/STAINLESS STEEL PENETRATION PROTECTORS ON 2" SHEAR AT ELEVATION OF GRAVEL DUCT. PROVIDE 1" AIR GAP THROUGH ROOF TO D-2.
10. 10" DIA. DUCT UP FROM HOOD THROUGH ROOF TO EF-4 COMPLIANT WITH NFPA 98. PROVIDE BRASS/STAINLESS STEEL PENETRATION PROTECTORS ON 2" SHEAR AT ELEVATION OF GRAVEL DUCT. PROVIDE 1" AIR GAP THROUGH ROOF TO D-2.
11. 10" DIA. DUCT UP FROM HOOD THROUGH ROOF TO EF-5 COMPLIANT WITH NFPA 98. PROVIDE BRASS/STAINLESS STEEL PENETRATION PROTECTORS ON 2" SHEAR AT ELEVATION OF GRAVEL DUCT. PROVIDE 1" AIR GAP THROUGH ROOF TO D-2.
12. 10" DIA. DUCT UP FROM HOOD THROUGH ROOF TO EF-6 COMPLIANT WITH NFPA 98. PROVIDE BRASS/STAINLESS STEEL PENETRATION PROTECTORS ON 2" SHEAR AT ELEVATION OF GRAVEL DUCT. PROVIDE 1" AIR GAP THROUGH ROOF TO D-2.
13. PROVIDE 1" AIR GAP THROUGH ROOF TO D-2.
14. PROVIDE 1" AIR GAP THROUGH ROOF TO D-2.
15. PROVIDE 1" AIR GAP THROUGH ROOF TO D-2.
16. PROVIDE 1" AIR GAP THROUGH ROOF TO D-2.
17. PROVIDE 1" AIR GAP THROUGH ROOF TO D-2.
18. PROVIDE 1" AIR GAP THROUGH ROOF TO D-2.
19. PROVIDE 1" AIR GAP THROUGH ROOF TO D-2.

**HVAC PLAN NOTES**

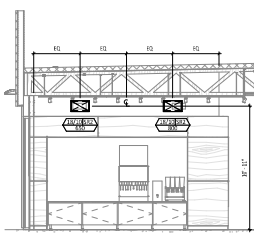
20. INSTALL REMOTE CONDITIONING UNIT FOR WALK-IN COOLER ON ROOF AS DETAILED IN THE ARCHITECTURAL AND STRUCTURAL DRAWINGS. INSTALL REFRIGERANT LINE 1/2" THERMOSTATIC EXPANSION VALVE, SOLID STATE VALVE, TEMPERATURE CONTROL, SIGHT GLASS, FILTER DRIER, PRESSURE CONTROL, LOW AMBIENT CONTROL, AND WALK-IN REFRIGERATOR. TRAP AND SLOPE REFRIGERANT LINES PER MANUFACTURER'S RECOMMENDATION. INSTALLATION SHALL COMPLY WITH ASHRAE/ANSI STANDARD 15. INSTALL THE REFRIGERANT LINE SET UNDER THE ROOF DECK TO WATER TABLE OF THE CONCRETE. CUT 2" DIA. HOLE IN WALK-IN COOLER ROOF FOR REFRIGERANT LINE SET AND SEAL PER THE COOLER MANUFACTURER'S INSTALLATION INSTRUCTIONS AFTER LINE SET IS INSTALLED.
21. INSTALL REMOTE CONDENSER FOR ICE MACHINE ON ROOF AS DETAILED IN THE ARCHITECTURAL AND STRUCTURAL DRAWINGS. INSTALL REFRIGERANT LINE SET, THERMOSTATIC EXPANSION VALVE, SOLID STATE VALVE, TEMPERATURE CONTROL, SIGHT GLASS, FILTER DRIER, PRESSURE CONTROL, LOW AMBIENT CONTROL, AND WALK-IN REFRIGERATOR. TRAP AND SLOPE REFRIGERANT LINES PER MANUFACTURER'S RECOMMENDATION. INSTALLATION SHALL COMPLY WITH ASHRAE/ANSI STANDARD 15. INSTALL THE REFRIGERANT LINE SET UNDER THE ROOF DECK TO WATER TABLE OF THE CONCRETE. CUT 2" DIA. HOLE IN WALK-IN COOLER ROOF FOR REFRIGERANT LINE SET AND SEAL PER THE COOLER MANUFACTURER'S INSTALLATION INSTRUCTIONS AFTER LINE SET IS INSTALLED.
22. INSTALL REFRIGERANT LINE SET FOR PER PERVAL SYSTEM AND AS DETAILED IN THE ARCHITECTURAL AND STRUCTURAL DRAWINGS. INSTALL LOGICALLY PROGRAMMED SYSTEM FURNISHED BY CHIPOTLE OR EQUIVARIANT FAN BY L.
23. PROVIDE SUPPLY REGISTER CONNECTION TO SUPPLY SYSTEM PER DETAIL DUMPS. TYPICAL.
24. PROVIDE AUDIO VISUAL REMOTE SMOKE DETECTOR AND NOTIFICATION WITH REMOTE KEY OPERATED RESET. WIRE AS UNIT BACK TO HIGH RISE FIRE SECTION. WALK-IN UNIT ROOF RITE. TYPICAL.
25. INSTALL REMOTE HALO AIR FURNISH FURNISHED BY TULSA. RTU PER DETAIL ALTHO. SET ELECTRICAL DRAWINGS FOR POWER CONNECTION INFORMATION. INSTALL BY WIRING IN FACE OF FACE OF ENCLOSURE PER DETAIL AND ON ANY RTU ACCESS DOORS THROUGH. BRANCH THE REMOTE HALO SMOKE DETECTOR TO THE FIRE ALARM CONTROL PANEL.
26. PROVIDE SUPPLY REGISTER TO THAT SUPPLY AIR INTO WALL ON OPPOSITE SIDE OF ROOM AT APPROXIMATELY 7' AFF WITH NO GREAT'S FEEL IN THE SPRING ROOM.
27. PROVIDE SUPPLY REGISTER TO THAT SUPPLY AIR INTO WALL ON OPPOSITE SIDE OF ROOM AT APPROXIMATELY 7' AFF WITH NO GREAT'S FEEL IN THE SPRING ROOM.
28. PROVIDE SUPPLY REGISTER TO THAT SUPPLY AIR INTO WALL ON OPPOSITE SIDE OF ROOM AT APPROXIMATELY 7' AFF WITH NO GREAT'S FEEL IN THE SPRING ROOM.



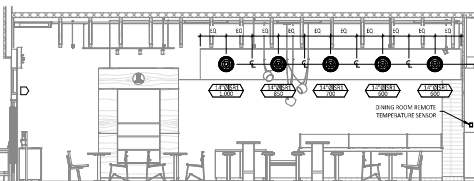
**DINING RETURN SECTION**  
1/4" = 1'-0"



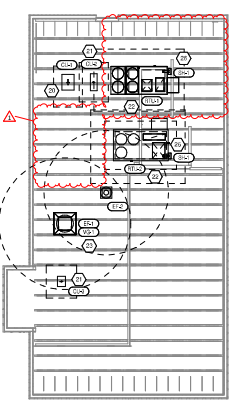
**HVAC DINING ROOM SECTION**  
1/4" = 1'-0"



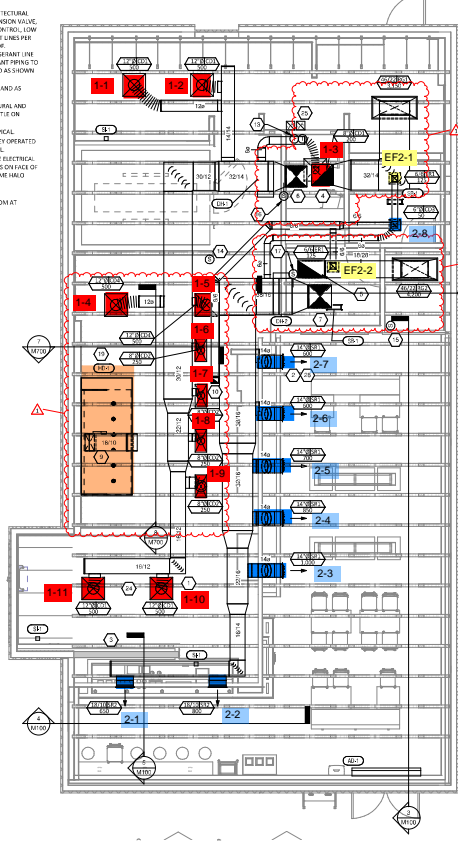
**HVAC DINING ROOM SECTION**  
1/4" = 1'-0"



**HVAC DINING ROOM SECTION**  
1/4" = 1'-0"



**HVAC ROOF PLAN**  
1/4" = 1'-0"



**HVAC FLOOR PLAN**  
1/4" = 1'-0"

**NATIONAL**  
4635 Truman Blvd. Suite 250  
Hilliard, Ohio 43026  
Phone: (614) 751-6810  
Fax: (614) 552-5240  
Contact: Jason L. Decker  
(614) 751-9610  
JDecker@nationalengineering.com

**CHIPOTLE MEXICAN GRILL**  
CHIPOTLE MEXICAN GRILL, INC.  
10000 WILLOW CREEK DRIVE  
CALIFORNIA, CA 92504  
TEL: (951) 261-1000  
WWW.CHIPOTLE.COM

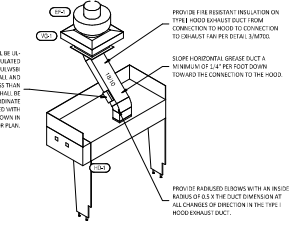
STORE NO.: 5115  
CALIFORNIA  
Three Notch Rd & Oak Crest Dr  
California, MD 20619

DATE	DESCRIPTION
11.28.2020	ISSUE FOR PERMIT
02.26.2021	ISSUE FOR BIDDING
03.30.2021	ISSUE FOR BIDDING
05.28.2021	ISSUE FOR BIDDING
06.22.2021	ISSUE FOR BIDDING
08.22.2021	ISSUE FOR BIDDING
09.22.2021	ISSUE FOR BIDDING
10.22.2021	ISSUE FOR BIDDING
11.22.2021	ISSUE FOR BIDDING
12.22.2021	ISSUE FOR BIDDING
01.22.2022	ISSUE FOR BIDDING
02.22.2022	ISSUE FOR BIDDING
03.22.2022	ISSUE FOR BIDDING
04.22.2022	ISSUE FOR BIDDING
05.22.2022	ISSUE FOR BIDDING
06.22.2022	ISSUE FOR BIDDING
07.22.2022	ISSUE FOR BIDDING
08.22.2022	ISSUE FOR BIDDING
09.22.2022	ISSUE FOR BIDDING
10.22.2022	ISSUE FOR BIDDING
11.22.2022	ISSUE FOR BIDDING
12.22.2022	ISSUE FOR BIDDING

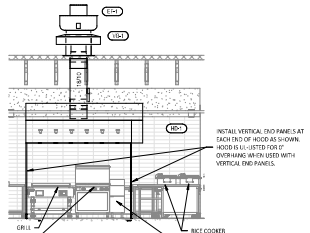
Drawn: JLD  
Met: JLD  
Project: 230117  
Checked: JLD

**HVAC PLAN**  
**M100**

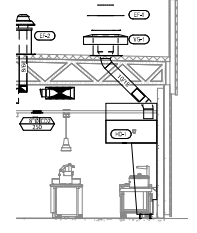




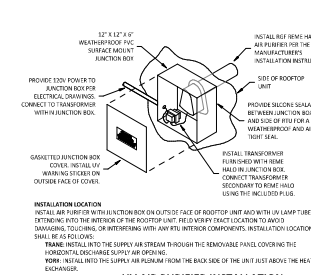
**HOOD EXHAUST ISOMETRIC**  
NOT TO SCALE



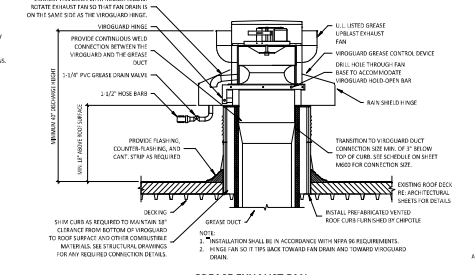
**HOOD ELEVATION**  
1/4" = 1'-0"



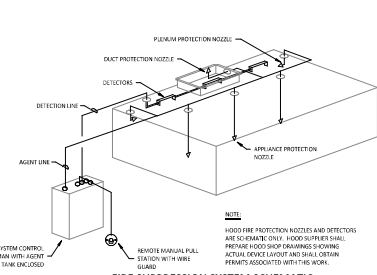
**DUCT SECTION AT HOOD**  
1/8" = 1'-0"



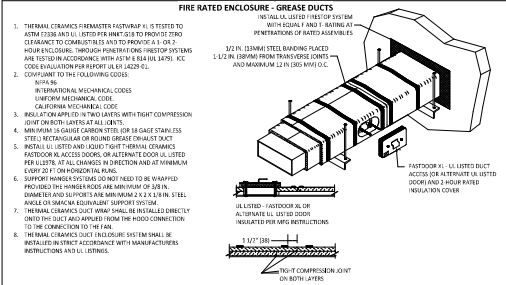
**UV AIR PURIFIER INSTALLATION**  
NOT TO SCALE



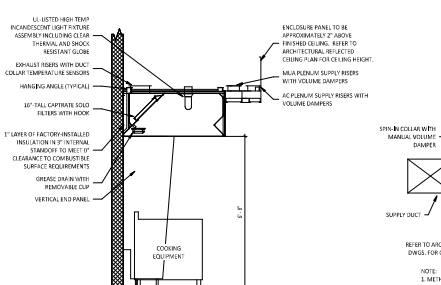
**GREASE EXHAUST FAN**  
NOT TO SCALE



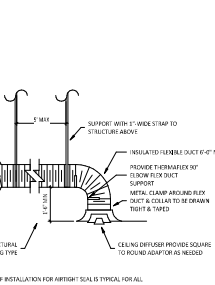
**FIRE SUPPRESSION SYSTEM SCHEMATIC**  
NOT TO SCALE



**FIREMASTER DUCT WRAP - UL HNKT-G18**  
NOT TO SCALE



**HOOD SECTION VIEW**  
NOT TO SCALE



**DIFFUSER CONNECTION**  
NOT TO SCALE

**NATIONAL**  
4036 Truman Blvd. Suite 250  
Hilliard, Ohio 43026  
Phone: (614) 751-0810  
Fax: (614) 552-6240  
Contact: Jason L. Decker  
(614) 751-9610  
JDecker@nationalengineering.com

**CHIPOTLE MEXICAN GRILL**  
CHIPOTLE MEXICAN GRILL, INC.  
20000 WILSON BLVD., SUITE 100  
COLUMBIA, SC 29212  
TEL: 803.733.8000  
WWW.CHIPOTLE.COM

STORE NO.: 5115  
CALIFORNIA  
Three Notch Rd & Oak Crest Dr  
California, MD 20619

DATE	DESCRIPTION	BY	CHKD
22.APR.2009	ISSUED	JLD	
02.AUG.2009	ISSUED	JLD	
28.AUG.2009	ISSUED	JLD	
28.AUG.2009	ISSUED	JLD	

HVAC DETAILS  
**M700**