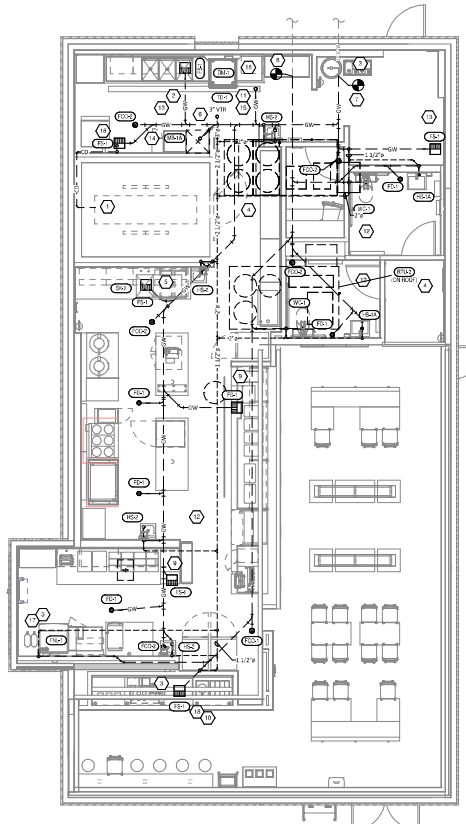


| PLUMBING FIXTURE WASTE CONNECTIONS | | | | | | |
|------------------------------------|---|-----------------|-------|-----|-------|-----------|
| TAG | DESCRIPTION | CONNECTION SIZE | WASTE | DFU | COUNT | TOTAL DFU |
| TEB-1 | TEA TRAY DRAIN MACHINE (NUMBER OF LETS) | 1/2" | 1/2" | 1 | 1 | 1 |
| TEB-2 | FLOOR CLEAN-UP KIT | 1/2" | 1/2" | 1 | 1 | 1 |
| FD-1 | FLOOR DRAIN | 2" | 2" | 5 | 50 | 50 |
| FD-2 | TRUNK DRAIN | 2" | 2" | 1 | 2 | 2 |
| FD-3 | FLOOR SINK | 1/2" | 1/2" | 7 | 35 | 35 |
| WC-1 | WATER CLOSET | 2" | 2" | 1 | 2 | 2 |
| WC-2 | WATER CLOSET | 2" | 2" | 1 | 2 | 2 |
| WC-3 | WATER CLOSET | 2" | 2" | 1 | 2 | 2 |
| WC-4 | WATER CLOSET | 2" | 2" | 1 | 2 | 2 |
| WC-5 | WATER CLOSET | 2" | 2" | 1 | 2 | 2 |
| WC-6 | WATER CLOSET | 2" | 2" | 1 | 2 | 2 |
| WC-7 | WATER CLOSET | 2" | 2" | 1 | 2 | 2 |
| WC-8 | WATER CLOSET | 2" | 2" | 1 | 2 | 2 |
| WC-9 | WATER CLOSET | 2" | 2" | 1 | 2 | 2 |
| WC-10 | WATER CLOSET | 2" | 2" | 1 | 2 | 2 |
| WC-11 | WATER CLOSET | 2" | 2" | 1 | 2 | 2 |
| WC-12 | WATER CLOSET | 2" | 2" | 1 | 2 | 2 |
| WC-13 | WATER CLOSET | 2" | 2" | 1 | 2 | 2 |
| WC-14 | WATER CLOSET | 2" | 2" | 1 | 2 | 2 |
| WC-15 | WATER CLOSET | 2" | 2" | 1 | 2 | 2 |
| WC-16 | WATER CLOSET | 2" | 2" | 1 | 2 | 2 |
| WC-17 | WATER CLOSET | 2" | 2" | 1 | 2 | 2 |
| WC-18 | WATER CLOSET | 2" | 2" | 1 | 2 | 2 |
| WC-19 | WATER CLOSET | 2" | 2" | 1 | 2 | 2 |
| WC-20 | WATER CLOSET | 2" | 2" | 1 | 2 | 2 |
| WC-21 | WATER CLOSET | 2" | 2" | 1 | 2 | 2 |
| WC-22 | WATER CLOSET | 2" | 2" | 1 | 2 | 2 |
| WC-23 | WATER CLOSET | 2" | 2" | 1 | 2 | 2 |
| WC-24 | WATER CLOSET | 2" | 2" | 1 | 2 | 2 |
| WC-25 | WATER CLOSET | 2" | 2" | 1 | 2 | 2 |
| WC-26 | WATER CLOSET | 2" | 2" | 1 | 2 | 2 |
| WC-27 | WATER CLOSET | 2" | 2" | 1 | 2 | 2 |
| WC-28 | WATER CLOSET | 2" | 2" | 1 | 2 | 2 |
| WC-29 | WATER CLOSET | 2" | 2" | 1 | 2 | 2 |
| WC-30 | WATER CLOSET | 2" | 2" | 1 | 2 | 2 |
| WC-31 | WATER CLOSET | 2" | 2" | 1 | 2 | 2 |
| WC-32 | WATER CLOSET | 2" | 2" | 1 | 2 | 2 |
| WC-33 | WATER CLOSET | 2" | 2" | 1 | 2 | 2 |
| WC-34 | WATER CLOSET | 2" | 2" | 1 | 2 | 2 |
| WC-35 | WATER CLOSET | 2" | 2" | 1 | 2 | 2 |
| WC-36 | WATER CLOSET | 2" | 2" | 1 | 2 | 2 |
| WC-37 | WATER CLOSET | 2" | 2" | 1 | 2 | 2 |
| WC-38 | WATER CLOSET | 2" | 2" | 1 | 2 | 2 |
| WC-39 | WATER CLOSET | 2" | 2" | 1 | 2 | 2 |
| WC-40 | WATER CLOSET | 2" | 2" | 1 | 2 | 2 |
| WC-41 | WATER CLOSET | 2" | 2" | 1 | 2 | 2 |
| WC-42 | WATER CLOSET | 2" | 2" | 1 | 2 | 2 |
| WC-43 | WATER CLOSET | 2" | 2" | 1 | 2 | 2 |
| WC-44 | WATER CLOSET | 2" | 2" | 1 | 2 | 2 |
| WC-45 | WATER CLOSET | 2" | 2" | 1 | 2 | 2 |
| WC-46 | WATER CLOSET | 2" | 2" | 1 | 2 | 2 |
| WC-47 | WATER CLOSET | 2" | 2" | 1 | 2 | 2 |
| WC-48 | WATER CLOSET | 2" | 2" | 1 | 2 | 2 |
| WC-49 | WATER CLOSET | 2" | 2" | 1 | 2 | 2 |
| WC-50 | WATER CLOSET | 2" | 2" | 1 | 2 | 2 |
| WC-51 | WATER CLOSET | 2" | 2" | 1 | 2 | 2 |
| WC-52 | WATER CLOSET | 2" | 2" | 1 | 2 | 2 |
| WC-53 | WATER CLOSET | 2" | 2" | 1 | 2 | 2 |
| WC-54 | WATER CLOSET | 2" | 2" | 1 | 2 | 2 |
| WC-55 | WATER CLOSET | 2" | 2" | 1 | 2 | 2 |
| WC-56 | WATER CLOSET | 2" | 2" | 1 | 2 | 2 |
| WC-57 | WATER CLOSET | 2" | 2" | 1 | 2 | 2 |
| WC-58 | WATER CLOSET | 2" | 2" | 1 | 2 | 2 |
| WC-59 | WATER CLOSET | 2" | 2" | 1 | 2 | 2 |
| WC-60 | WATER CLOSET | 2" | 2" | 1 | 2 | 2 |
| WC-61 | WATER CLOSET | 2" | 2" | 1 | 2 | 2 |
| WC-62 | WATER CLOSET | 2" | 2" | 1 | 2 | 2 |
| WC-63 | WATER CLOSET | 2" | 2" | 1 | 2 | 2 |
| WC-64 | WATER CLOSET | 2" | 2" | 1 | 2 | 2 |
| WC-65 | WATER CLOSET | 2" | 2" | 1 | 2 | 2 |
| WC-66 | WATER CLOSET | 2" | 2" | 1 | 2 | 2 |
| WC-67 | WATER CLOSET | 2" | 2" | 1 | 2 | 2 |
| WC-68 | WATER CLOSET | 2" | 2" | 1 | 2 | 2 |
| WC-69 | WATER CLOSET | 2" | 2" | 1 | 2 | 2 |
| WC-70 | WATER CLOSET | 2" | 2" | 1 | 2 | 2 |
| WC-71 | WATER CLOSET | 2" | 2" | 1 | 2 | 2 |
| WC-72 | WATER CLOSET | 2" | 2" | 1 | 2 | 2 |
| WC-73 | WATER CLOSET | 2" | 2" | 1 | 2 | 2 |
| WC-74 | WATER CLOSET | 2" | 2" | 1 | 2 | 2 |
| WC-75 | WATER CLOSET | 2" | 2" | 1 | 2 | 2 |
| WC-76 | WATER CLOSET | 2" | 2" | 1 | 2 | 2 |
| WC-77 | WATER CLOSET | 2" | 2" | 1 | 2 | 2 |
| WC-78 | WATER CLOSET | 2" | 2" | 1 | 2 | 2 |
| WC-79 | WATER CLOSET | 2" | 2" | 1 | 2 | 2 |
| WC-80 | WATER CLOSET | 2" | 2" | 1 | 2 | 2 |
| WC-81 | WATER CLOSET | 2" | 2" | 1 | 2 | 2 |
| WC-82 | WATER CLOSET | 2" | 2" | 1 | 2 | 2 |
| WC-83 | WATER CLOSET | 2" | 2" | 1 | 2 | 2 |
| WC-84 | WATER CLOSET | 2" | 2" | 1 | 2 | 2 |
| WC-85 | WATER CLOSET | 2" | 2" | 1 | 2 | 2 |
| WC-86 | WATER CLOSET | 2" | 2" | 1 | 2 | 2 |
| WC-87 | WATER CLOSET | 2" | 2" | 1 | 2 | 2 |
| WC-88 | WATER CLOSET | 2" | 2" | 1 | 2 | 2 |
| WC-89 | WATER CLOSET | 2" | 2" | 1 | 2 | 2 |
| WC-90 | WATER CLOSET | 2" | 2" | 1 | 2 | 2 |
| WC-91 | WATER CLOSET | 2" | 2" | 1 | 2 | 2 |
| WC-92 | WATER CLOSET | 2" | 2" | 1 | 2 | 2 |
| WC-93 | WATER CLOSET | 2" | 2" | 1 | 2 | 2 |
| WC-94 | WATER CLOSET | 2" | 2" | 1 | 2 | 2 |
| WC-95 | WATER CLOSET | 2" | 2" | 1 | 2 | 2 |
| WC-96 | WATER CLOSET | 2" | 2" | 1 | 2 | 2 |
| WC-97 | WATER CLOSET | 2" | 2" | 1 | 2 | 2 |
| WC-98 | WATER CLOSET | 2" | 2" | 1 | 2 | 2 |
| WC-99 | WATER CLOSET | 2" | 2" | 1 | 2 | 2 |
| WC-100 | WATER CLOSET | 2" | 2" | 1 | 2 | 2 |

PLUMBING WASTE AND VENT PLAN NOTES

1. PROVIDE 3/4" CONDENSATE DRAIN FROM THE WALK-IN COOLER EVAPORATOR TO THE FLOOR SINK OR TO AN APPROVED VENT. CONDENSATE DRAIN IN WALK-IN COOLERS SHOULD BE DISCHARGED TO THE FLOOR SINK OR TO AN APPROVED VENT. CONDENSATE DRAIN FROM THE WALK-IN COOLER SHOULD PENETRATE THE WALL AT POINT OF DISCHARGE AT 4" MIN.
2. PROVIDE DRAIN CONNECTIONS TO THE THREE COMPARTMENT SINK PER DETAIL 12/7900.
3. COORDINATE ROUTING OF SODAS WITH COCA-COLA TECHNICIAN FROM AREA IN ROOM AREA TO EACH SODAOUNTAIN. OTHER THAN WITHIN THE WALL DOWN TO THE BIRTH ROOM THE SODA BUNDS SHALL BE ROUTED ON UPWARD FINISHES. COORDINATE SUPPORT AND ROUTING OF THE SODA INT BUNDS WITH COCA-COLA TECHNICIAN DURING ROUGH IN AND PROVIDE NECESSARY SUPPORTS. SEE ARCHITECTURAL DRAWINGS FOR SODA BUNDLES TERMINATION LOCATION AND PROVIDE TERMINATION PER DETAIL 12/7900.
4. PROVIDE CONDENSATE TRAP ON THE TEA TRAY DRAIN. PROVIDE AN AIR GAP AT THE DISCHARGE TO THE FLOOR SINK.
5. PROVIDE DRAIN LINES FROM THE FOOD PREP SINK TO THE FLOOR SINK. PROVIDE AN AIR GAP AT THE DISCHARGE TO THE FLOOR SINK.
6. PROVIDE 4" VENT THROUGH THE ROOF PER DETAIL 13/7900.
7. CONNECT TO EXISTING 4" GREASE WASTE LINE LEADING TO EXISTING GREASE INTERCEPTOR.
8. CONNECT TO EXISTING 4" SANITARY DRAIN LINE.
9. PROVIDE 3/4" VALVED DRAIN FROM HOT FOOD TABLE TO THE FLOOR SINK DRAIN THROUGH AN AIR GAP.
10. PROVIDE INSULATED COPPER DRAIN LINES FROM THE TEA TRAY DRAIN AND THE SODA MACHINE DRAIN TO THE FLOOR SINK DRAIN THROUGH AN AIR GAP. HOLD TEA TRAY DRAIN AS HIGH AS POSSIBLE AND SECURE TO STRUCTURE BELOW THE SINK COUNTER.
11. TRAY DRAIN ENDS FOR THE MANUFACTURER'S INSTALLATION INSTRUCTIONS PERIOD TO NOTIFICATIONS THAT ENDS WITHOUT GAPS. INSTALL TRAY DRAIN WITH SLOPE PROTECTIVE SLOPE TOWARD THE DRAIN CONNECTION TO AVOID STANDING WATER IN TRAY DRAIN.
12. SET TRAY DRAIN WALL CLAMP ON TOP OF FINISH OR VENEER WALL. IF A WALL CLAMP IS REQUIRED ON THE TRAY DRAIN COORDINATE THE EXACT LOCATION WITH CHOPOT'S CONSTRUCTION MANAGER.
13. PROVIDE PROTECT WASTE AND CONDENSATE DRAINING FROM FIXTURES OTHER THAN SINKS CENTRAL TO THE WALL AS SHOWN IN DETAIL 15/7900.
14. PROVIDE DRAIN FROM WATER FILTER BY TO FLOOR SINK CONCEALED IN THE WALL AS SHOWN IN DETAIL 15/7900.
15. PROVIDE TRUNK DRAIN AS SHOWN IN DETAIL 15/7900.
16. INSTALL DRAIN HOSE LUMBERED WITHIN DISH MACHINES FROM DRAIN MACHINE OUTLET TO FLOOR SINK. HOLD DRAIN HOSE TIGHT TO WALL AND SECURE TO SUPPORT SINK DRAIN TO BACKDRAIN AIR GAP AT THE FLOOR SINK.
17. SEE DETAIL 16/7900 FOR DRAINING FROM TEA TRAY, ICE MAKER, AND SODA MACHINE TO FUNNEL DRAIN.
18. PROVIDE PVC DRAIN PIPES FROM THE ICE MAKER TO THE FLOOR SINK PER THE MANUFACTURER'S INSTALLATION INSTRUCTIONS. PROVIDE A CODE-APPROVED AIR GAP AT THE DISCHARGE TO THE FLOOR SINK. SECURE ICE MAKER PIPES TO THE BOTTOM OF THE ICE MAKER.



SANITARY WASTE & VENT DIAGRAM
NOT TO SCALE

SANITARY WASTE & VENT PLAN

NATIONAL
4036 Truman Blvd. Suite 250
Hilliard, Ohio 43026
Phone: (614) 751-6810
Fax: (614) 562-6240
Contact: Jason L. Decker
(614) 751-9610
JDecker@nationalengineering.com



STORE NO.: 5115
CALIFORNIA
Three Notch Rd & Oak Crest Dr
California, MD 20619

| Date | By | Checked |
|-------------|-----|---------|
| 22.APR.2020 | JLD | JLD |
| 02.APR.2020 | JLD | JLD |
| 28.APR.2020 | JLD | JLD |

**PLUMBING PLAN
WASTE & VENT**
P110

