

Report By:

**National TAB
1329 E. KEMPER ROAD
SUITE 4210
CINCINNATI, OH 45246**

NATIONAL

TAB

Comfort. Under control.

**Report: FINAL TAB REPORT
Function: Test, Adjust, & Balance
Date: 10/11/2022**

PROJECT

10-10 SWEETGREEN #DAL - SOUTHLAKE, TX

1111 EAST SOUTHLAKE BLVD

SOUTHLAKE , TX

Client

D4 Construction Services, LLC

4121 Main St

Rowlett, TX 75088

National TAB

Project: 10-10 SWEETGREEN #DAL - SOUTHLAKE, TX

Table Of Contents

| Section | Page # |
|----------------------|---------------|
| Summary | 3 |
| Remarks | 4 |
| Balance Schedule | 6 |
| Site Pictures | 7 |
| Checklist Data | 10 |
| AHU/RTU | 13 |
| FAN - Exhaust | 19 |
| Kitchen Hood Type II | 22 |
| GRD Layout | 23 |

Project Summary

The summary below provides a quick understanding of our scope of work and general testing procedures. Enclosed in the report is further detail about your building performance including recommendations, asset data, and pictures. Our focus is to work with the trades to remedy any issues or deficiencies during the actual field balancing and not after the balancing has occurred to achieve a positive environment and outcome. The level of success is determined by the availability of the trades, possible parts needed, or time constraints.

RTU's (Roof Top Units) w/ Diffusers

Each of the RTU's were measured at their terminal devices or via traverse to establish a total flow for that unit. Each RTU was adjusted to within tolerance of the engineer's design flow. Each outlet was then adjusted to within tolerance of the design flow. Outside air was measured by reading the intake air opening with a velocity grid and multiplying by the free area. The outside air damper was adjusted until the airflow was within the design requirements. Any equipment that fell outside of that tolerance is noted throughout the report.

General Exhaust Fans w/ Grilles

The general exhaust fans were measured by reading each air device with a flow hood. The total airflow for each fan is equivalent to the sum of these readings. Fan speed was then adjusted so that the airflow was within tolerance of design. Each terminal device was balanced to within tolerance of the design volume using the installed volume dampers. Any equipment that fell outside of this tolerance is noted throughout the report.

Kitchen Exhaust Hood (Type II) & Associated Fans

Each kitchen exhaust fan was measured by traversing the ductwork or ductwork opening at the hood. The total flow of the exhaust fan was then adjusted to tolerance of the design flow. Any EF's that fell outside of this tolerance is noted throughout the report.

Final Building Tests

After completing the test and balance the final building pressure was measured. It was confirmed that the building pressure fell within acceptable tolerances of $-0.02''$ wc to $+0.02''$ wc and that the pressure measurement coincides with the actual and design net airflow. Any deviations from these standards are noted throughout the report.



Comfort. Under control.

10-10 SWEETGREEN #DAL - SOUTHLAKE,TX

Project Issue Information

Issue Name : RTU-3 has construction filters

Description : Recommend replacing with final filters

Created By : National TAB

Assigned To : National TAB - Will Turnbough

Status : Open

Originated Date : 10/10/2022 - Tyler Youells - National TAB

Project Issue File Details



FuseITf825840916db495...



Comfort. Under control.

10-10 SWEETGREEN #DAL - SOUTHLAKE,TX

Project Issue Information

Issue Name : WIRES ARE NOT PROTECTED FROM PHI HNITS

Description : Wires directly exposed to the UV light from the air purifiers need to be in split loom to prevent degradation of the wire insulation.

Created By : National TAB

Assigned To : National TAB - Will Turnbough

Status : Open

Originated Date : 10/11/2022 - Tyler Youells - National TAB

Project Issue File Details



PKGSOUTHLAKE.png

AIR BALANCE SCHEDULE

| UNIT | AREA SERVED | HVAC SUPPLY | | HVAC RETURN | | HVAC OUTDOOR | | OA % | | HOOD MAKE-UP | | HOOD EXHAUST | | GENERAL EXH. | |
|---------------|----------------|-------------|--------|-------------|--------|--------------|--------|--------|--------|--------------|--------|--------------|--------|--------------|--------|
| | | DESIGN | ACTUAL | DESIGN | ACTUAL | DESIGN | ACTUAL | DESIGN | ACTUAL | DESIGN | ACTUAL | DESIGN | ACTUAL | DESIGN | ACTUAL |
| RTU-1 | LOLO PICKUP/HK | 2000 | 2054 | 1600 | 1639 | 400 | 415 | 20.0% | 20.2% | | | | | | |
| RTU-2 | DINING | 2000 | 2087 | 1600 | 1695 | 400 | 392 | 20.0% | 18.8% | | | | | | |
| RTU-3 | KITCHEN | 3000 | 2730 | 2650 | 2352 | 350 | 378 | 11.7% | 13.8% | | | | | | |
| EF-1 | HD1 | | | | | | | | | | | 950 | 894 | | |
| EF-2 | RESTROOMS | | | | | | | | | | | | | 225 | 234 |
| TOTALS | | 7000 | 6871 | 5850 | 5686 | 1150 | 1185 | | | 0 | 0 | 950 | 894 | 225 | 234 |

NET BUILDING AIRFLOW CALCULATION

| TOTALS | DESIGN | ACTUAL |
|--------------------|------------|-----------|
| TOTAL OA | 1150 | 1185 |
| TOTAL EXHAUST | 1175 | 1128 |
| NET AIRFLOW | -25 | 57 |

| DOOR TESTED | BUILDING PRESSURE MEASUREMENTS (IN. H2O) |
|----------------|--|
| FRONT | 0.0061 |
| SIDE | - |
| REAR | 0.003 |
| AVERAGE | 0.0046 |

FINAL CHECKS

- ACTUAL NET AIRFLOW COINCIDES WITH DESIGN: ✘
- MEASURED PRESSURES COINCIDES WITH ACTUAL NET AIRFLOW: ✔
- PRESSURE FALLS WITHIN IMC TOLERANCE OF +/-0.02" W.C. ✔

NOTES:

EF-2 FAN DESIGN WAS 150CFM, BUT EXHAUST GRILLES ADDED TO 225 CFM. ADJUSTED BALANCE SCHEDULE TO MAINTAIN POSITIVE BP. ALSO, REAR DOOR IS CONNECTED TO A COMMON HALLWAY.



Comfort. Under control.

10-10 SWEETGREEN #DAL - SOUTHLAKE, TX

CheckList Information

Name : TECH - SITE PICTURES

Status : NotSubmitted

Assigned Organization : National TAB

Asset :

Requesting Organization : National TAB

CheckList Item Details

STORE FRONT

YES



FuseIT841ce1fc42904cd...

RTU-1

YES



FuseIT9d729a46a77248d...

RTU-2

YES



FuseIT4710d192be8c4e4...

RTU-3

YES



FuseITc8a975465b1d42d...

EF-1

YES



FuseIT3fb85777455b424...

EF-2

YES



FuseIT6fef36b7b4dd4bf...

HOOD-1

YES



FuseIT0f9340d0e5a242b...



FuseITdba86aab22d744b...

Notes/Comments :



Comfort. Under control.

10-10 SWEETGREEN #DAL - SOUTHLAKE, TX

CheckList Information

Name : TECH - STEP 1: INITIAL WALKTHROUGH **Status :** NotSubmitted

Assigned Organization : National TAB **Asset :**

Requesting Organization : National TAB

CheckList Item Details

INITIAL SITE WALKTHROUGH

| | |
|---|-----|
| Review Plan Review Checklist, has it been signed off and meets our standards to start balancing? If not contact processor to ensure job is ready. | YES |
| All diffusers and grilles are installed and match design? | YES |
| All hood filters installed and accounted for? | YES |
| Hoods are wired and have power? | YES |
| Hood is free of alarms? | N/A |
| Thermostats have power? | YES |
| Have trades/general contractor been notified about any issues and are they created on FaciliBuild? | YES |

Notes/Comments :



Comfort. Under control.

10-10 SWEETGREEN #DAL - SOUTHLAKE, TX

CheckList Information

| | | | |
|----------------------------------|-----------------------------------|-----------------|--------------|
| Name : | TECH - STEP 2: UNIT DATA AND EVAL | Status : | NotSubmitted |
| Assigned Organization : | National TAB | Asset : | |
| Requesting Organization : | National TAB | | |

CheckList Item Details

UNIT DATA AND EVALUATION WHILE GATHERING UNIT DATA CHECK THE FOLLOWING:

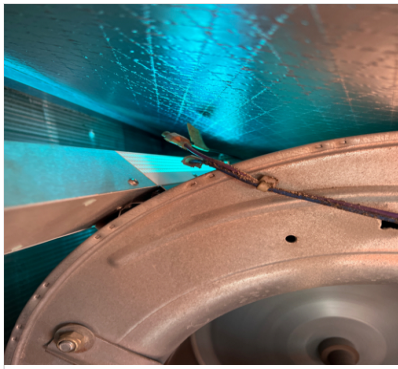
RTU's/AHU's

| | |
|--|--|
| Economizers are assembled and functional? | RESOLVED - Mechanical contractor is currently installing a new wiring harness for the economizer upon arrival. Will verify it works correctly when he is done[economizer is working correctly upon completion, however fan speed does not operate at the low speed. only at high speed when cooling. |
| DCV Max damper opening position is set to minimum? | YES |
| Free cooling enthalpy set point set for lowest setting (Typically "D") | SET TO E FOR TRANE UNITS, SET TO 55DB for carrier unit |
| Motors are all operating below the FLA rating? | YES |
| Are belts tight? | YES |
| If direct drive unit is the speed controller working. | N/A |
| Is gas piping installed and valves turned on? | RTU-3 gas valve is not on, will check with mechanical contractor. [GC stated to go ahead and turn gas valve on.] |
| Unit free of noticeable noise and vibrat | YES |

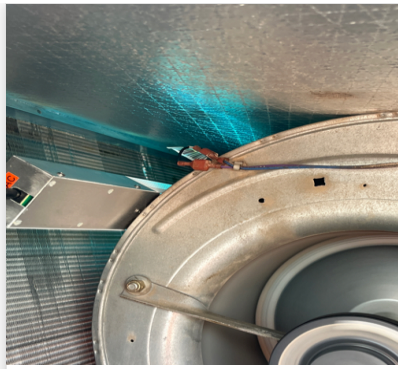
EF's

| | |
|-----------------------------------|--|
| Rotation is correct? | EF-2 Not yet running. Waiting on electrician to install power bank for lighting circuit. [electrician completed] |
| Belts are tight? | NA |
| Grease cup installed on hood fan? | NO, NOT A GREASE APPLICATION |

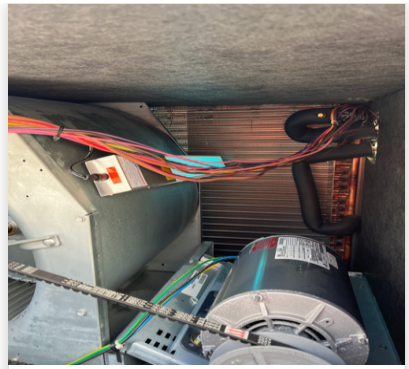
| | |
|--|--|
| Hinge kit installed installed on hood fan? | N/A |
| Lean fan back. Is grease duct installation adequate and is duct ran all the way to the base of the fan? | DUCT IS RUN TOTHE BASE OF THE FAN |
| Flex conduit is long enough so that fan can be completely tilted back? | NA |
| There is no major leakage around base of fan? | YES, THERE IS NO LEAKAGE |
| Is the motor operating below the motor FLA rating? | YES |
| For restroom fan(s) is the back draft damper installed and can it fully open? | N/A |
| Unit free of noticeable noise and vibration? | YES |
| MUA | |
| Rotation is correct? | NA |
| Gas piping is installed and valves are in on position? | N/A |
| Heater tested and is functional? | N/A |
| Internal motorized damper is fully opening? | N/A |
| Motor is operating below the FLA rating? | N/A |
| Unit free of noticeable noise and vibration? | N/A |
| HOODS | |
| Kitchen equipment installed in proper places? | YES |
| Can kitchen equipment be turned on for final smoke test? | NO, OVEN HAS NOT BEEN STARTED UP |
| DOCUMENTATION | |
| Have trades/general contractor been notified about any issues and are they created on FaciliBuild? | YES |
| AIR PURIFICATION INSPECTION | Yes |
| PHI Air purifiers are installed? | YES FOR ALL RTUS |
| Are they installed after the evaporator coil or in the supply duct? | YES, INSTALLED IN THE BLOWER COMPARTMENT |
| Are they powered? | YES |
| If PKG installed inside of the blower compartment, is the wiring exposed to UV light protected with split loom or conduit? | NO, PLEASE SEE PICTURES |



FuseIT587602fe5f93427...



FuseIT6f1f0175ff944f4...



FuseITb76ff983f52b4fb...

If Reme Halo, is it installed so that the air flow arrow is pointing correct direction?

NA

Is a UV warning sticker installed?

YES



FuseITbb17dd633b8149d...

Take picture of each air purifier and include in the report

DONE, PICTURES ARE LOCATED IN PICTURE CHECKLIST

Notes/Comments :



Comfort. Under control.

10-10 SWEETGREEN #DAL - SOUTHLAKE, TX

CheckList Information

Name : TECH - STEP 3: TEST, ADJUST AND BALANCE **Status :** NotSubmitted

Assigned Organization : National TAB **Asset :**

Requesting Organization : National TAB

CheckList Item Details

TEST, ADJUST, AND BALANCE ALL EQUIPMENT:

DURING TESTING MAKE NOTE OF THE FOLLOWING:

| | |
|---|-----|
| Is space free of drafting? | YES |
| Is space comfortable in all areas? | YES |
| Is the space free of ventilation noise? | YES |
| If deviations from design were necessary to resolve 1-3 what were they? Otherwise put "NA". | NA |

Notes/Comments :



Comfort. Under control.

10-10 SWEETGREEN #DAL - SOUTHLAKE, TX

CheckList Information

Name : TECH - STEP 4: FINAL TESTS **Status :** NotSubmitted
Assigned Organization : National TAB **Asset :**
Requesting Organization : National TAB

CheckList Item Details

FINAL TESTS

HOOD CAPTURE TEST

| | |
|---|--|
| List equipment turned on for testing | none, oven does not have the correct outlet/plug |
| List smoke candle type used | 45 sec smoke |
| Smoke test capture - Perimeter of hood | 100% |
| Smoke test capture - Top of cooking surface | 100% |

WITNESS

| | |
|--|-------------------------|
| Date test was completed | 10/11/22 |
| TAB tech name / Firm | Tyler/Ntab |
| Site super name / Firm | Randale/D4 construction |
| Owner representative name / Firm (if Applicable) | n/a |
| Building pressure at front & back doors (All Systems On) | Yes |

ADDITIONAL

| | |
|---|-----|
| Do actual net building airflow, design net building airflow, and pressure coincide? If not why? (All three should either be positive or negative) | Yes |
| Thermostats are programmed? | Yes |

Notes/Comments :



Comfort. Under control.

10-10 SWEETGREEN #DAL - SOUTHLAKE, TX

CheckList Information

| | | | |
|----------------------------------|--|-----------------|--------------|
| Name : | TECH - STEP 4B: HOOD AND OVEN EVALUATION | Status : | NotSubmitted |
| Assigned Organization : | National TAB | Asset : | |
| Requesting Organization : | National TAB | | |

CheckList Item Details

HOOD AND OVEN EVALUATION

| | |
|--|---|
| Is the oven covered by a hood? | YES |
| What is the hood overhang over the front of the hood? | 20' |
| What is hood overhang over the left and right sides of the oven? | 11.25", AND 11" |
| If vertical end panels are specified, are they installed? | N/A |
| SMOKE TEST AT HOOD | 100% |
| If oven is capable of turning on, it is required to be turned on for smoke test. Was oven on for smoke test? | NO. OVEN STARTUPS HAVE NOT BEEN COMPLETED. OVENS DO NOT HAVE THE CORRECT PLUGS AND CANNOT BE TURNED ON. |
| Smoke test the oven at the flue on the top of the hood - Capture %? | 100% |
| Smoke test the oven at perimeter of the oven - capture %? | 100% |
| Smoke test the oven at the perimeter of the hood - capture %? | 100% |

IF NO HOOD IS INSTALLED ABOVE THE OVEN

| | |
|--|-----|
| If no hood is installed above the oven, and it is only a grille, smoke test at the top of the oven at the flue and note the capture %. If smoke capture is very poor, hold the candle up by the grille after a few seconds so that the smoke alarms don't get set off. | N/A |
|--|-----|

SMOKE TEST AT OVEN

Confirm that the internal fan turns on as you open the oven door?

UNABLE TO VERIFY, OVENS DO NOT HAVE THE CORRECT PLUGS AND CANNOT BE TURNED ON

Smoke test at the oven doors as you are opening the door - capture %?

100% with top door, 60% with bottom door, note that oven is not in and internal fan is not running

Smoke test at the oven doors when the doors are shut - capture %?

100%

EXHAUST DISCHARGE AND OA INTAKES

Identify where the exhaust air is discharged and take pictures

Exhausts out of Ef-1



FuseIT41a9a2498afe483...

Are there any outside air intakes nearby that would be able to re-entrain the exhaust smoke? Take pictures

No closest is OA intake of Rtu-1 which is 10+ feet



FuseIT0034127f93ee4b7...

Are there any building entrances or windows near the exhaust discharge where smoke that will cause smoke to enter unwanted spaces?

NO

Notes/Comments :

National TAB

Project: 10-10 SWEETGREEN #DAL - SOUTHLAKE, TX

System/Unit: AHU/RTU



Comfort. Under control.

Asset: RTU1

AREA:OLO PICKUP/ HOT PREP

| Unit Data | | |
|---------------------|-------------|-------------|
| | Design | Actual |
| MFG | TRANE | TRANE |
| Serial Num | - | 160210161L |
| Model Num | YSC060E3RMA | YSC060E3RMA |
| Type | RTU | RTU |
| Configuration | VERTICAL | VERTICAL |
| Num OA Filters 1 | - | 1 |
| OA Filter Size 1 | - | 28X12 |
| Num Final Filter 1 | - | 2 |
| Final Filter Size 1 | - | 20X30X2 |

| Motor Data | | |
|----------------|--------|----------|
| | Design | Actual |
| Motor MFG | - | MARATHON |
| Frame | - | 56 |
| Horsepower | 1 | 1 |
| Motor Rpm | - | 1725 |
| Phase | 3 | 3 |
| Rated Voltage | 208 | 200 |
| Rated Amperage | - | 4.0 |

| Drive Data | | |
|--------------------|--------|---------------|
| | Design | Actual |
| Motor Sheave Size | - | 1VL34 |
| Motor Bore Size | - | 0.625" |
| Motor Sheave SetPt | - | 1.5 TURNS OUT |
| Fan Sheave Size | - | AK44 |
| Fan Sheave Bore | - | 0.75" |
| Belt CL Distance | - | 9" |
| Num of Belts | - | 1 |
| Belt Size | - | AX26 |
| Belt Alignment | - | GOOD |

| Test Data | | |
|------------------------|--------|--------------------|
| | Design | Actual |
| SF CFM | 2000 | 2054 |
| SF RPM | - | 1105 |
| RA CFM | 1600 | 1639 |
| OA CFM | 400 | 415 |
| RL Voltage | - | 215.5/213.7/214.6 |
| RL Amperage | - | 3.55/3.57/3.44 |
| SF Rotation | - | CW |
| RA Damper Position | - | MECHANICAL LINKAGE |
| Min OA Damper Position | - | 4.22V |
| Min OA Damper Type | - | ECONOMIZER |
| OA Enthalpy Setpt | - | E |

| Performance Data | | |
|------------------|--------|--------|
| | Design | Actual |
| MA Plenum SP | - | -0.28" |
| Fan Suction SP | - | -0.67" |
| Fan Discharge SP | - | 0.44" |
| Total ESP | 1.0" | 0.72" |
| Fan Total SP | - | 1.11" |

| General | | |
|----------------------------|--------|--------|
| | Design | Actual |
| Fan Rotation Correct | - | YES |
| Unit Filters Clean | - | YES |
| Condensate Drain Installed | - | YES |

Completed By: Tyler Youells

Notes:

National TAB

Project:10-10 SWEETGREEN #DAL - SOUTHLAKE, TX

AHU/RTU



Comfort. Under control.

Diffuser Supply (GRD)

RTU1/OLO PICKUP/ HOT PREP

| Asset | | | | | | | | | |
|------------|------------|------|------|------------|----|--------|--------|-----------|-------------|
| Asset Name | Location | Type | Size | DESIGN CFM | AK | CFM(1) | CFM(2) | FINAL CFM | % to design |
| SGRD1 | OLO PICKUP | E | - | 400 | 1 | 316 | - | 409 | 102.3 |
| SGRD2 | OLO PICKUP | G | - | 350 | 1 | 348 | - | 376 | 107.4 |
| SGRD3 | OLO PREP | G | - | 350 | 1 | 299 | - | 360 | 102.9 |
| SGRD4 | HOT PREP | A | - | 450 | 1 | 433 | - | 471 | 104.7 |
| SGRD5 | HOT PREP | A | - | 450 | 1 | 434 | - | 438 | 97.3 |

Completed By: Tyler Youells on

National TAB

Project: 10-10 SWEETGREEN #DAL - SOUTHLAKE, TX

System/Unit: AHU/RTU



Comfort. Under control.

Asset: RTU2

AREA: DINING

| Unit Data | | |
|---------------------|-------------|-------------|
| | Design | Actual |
| MFG | TRANE | TRANE |
| Serial Num | - | 160210137L |
| Model Num | YSC060E3RMA | YSC060E3RMA |
| Type | RTU | RTU |
| Configuration | VERTICAL | VERTICAL |
| Num OA Filters 1 | - | 1 |
| OA Filter Size 1 | - | 28X12 |
| Num Final Filter 1 | - | 2 |
| Final Filter Size 1 | - | 20X30X2 |

| Motor Data | | |
|----------------|--------|----------|
| | Design | Actual |
| Motor MFG | - | MARATHON |
| Frame | - | 56 |
| Horsepower | 1 | 1 |
| Motor Rpm | - | 1725 |
| Phase | 3 | 3 |
| Rated Voltage | 208 | 208 |
| Rated Amperage | - | 4.0 |

| Drive Data | | |
|--------------------|--------|---------------|
| | Design | Actual |
| Motor Sheave Size | - | 1VL34 |
| Motor Bore Size | - | 0.625" |
| Motor Sheave SetPt | - | 1.5 TURNS OUT |
| Fan Sheave Size | - | AK44 |
| Fan Sheave Bore | - | 1" |
| Belt CL Distance | - | 9" |
| Num of Belts | - | 1 |
| Belt Size | - | AX26 |
| Belt Alignment | - | GOOD |

| Test Data | | |
|------------------------|--------|--------------------|
| | Design | Actual |
| SF CFM | 2000 | 2087 |
| SF RPM | - | 1133 |
| RA CFM | 1600 | 1695 |
| OA CFM | 400 | 392 |
| RL Voltage | - | 216.0/215.4/214.6 |
| RL Amperage | - | 3.68/3.57/3.56 |
| SF Rotation | - | CW |
| RA Damper Position | - | MECHANICAL LINKAGE |
| Min OA Damper Position | - | 4.18V |
| Min OA Damper Type | - | ECONOMIZER |
| OA Enthalpy Setpt | - | E |

| Performance Data | | |
|------------------|--------|--------|
| | Design | Actual |
| MA Plenum SP | - | -0.31" |
| Fan Suction SP | - | -0.69" |
| Fan Discharge SP | - | 0.50" |
| Total ESP | 1.0" | 0.81" |
| Fan Total SP | - | 1.19" |

| General | | |
|----------------------------|--------|--------|
| | Design | Actual |
| Fan Rotation Correct | - | YES |
| Unit Filters Clean | - | YES |
| Condensate Drain Installed | - | YES |

Completed By: Tyler Youells

Notes:

National TAB

Project:10-10 SWEETGREEN #DAL - SOUTHLAKE, TX

AHU/RTU



Comfort. Under control.

Diffuser Supply (GRD)

RTU2/DINING

| Asset | | | | | | | | | |
|------------|--------------------|------|------|------------|----|--------|--------|-----------|-------------|
| Asset Name | Location | Type | Size | DESIGN CFM | AK | CFM(1) | CFM(2) | FINAL CFM | % to design |
| SGRD1 | DINING | G | - | 400 | 1 | 266 | 433 | 433 | 108.3 |
| SGRD2 | DINING | G | - | 450 | 1 | 446 | 459 | 459 | 102.0 |
| SGRD3 | DINING | G | - | 450 | 1 | 391 | 442 | 442 | 98.2 |
| SGRD4 | DINING | G | - | 400 | 1 | 394 | 425 | 425 | 106.3 |
| SGRD5 | RR CORRIDO R | G | - | 200 | 1 | 231 | 219 | 219 | 109.5 |
| SGRD6 | RESTROO M #1 | C | - | 50 | 1 | 76 | 54 | 54 | 108.0 |
| SGRD7 | RESTROO M #2 | C | - | 50 | 1 | 0 | 55 | 55 | 110.0 |

Completed By: Tyler Youells on

National TAB

Project: 10-10 SWEETGREEN #DAL - SOUTHLAKE, TX

System/Unit: AHU/RTU



Comfort. Under control.

Asset: RTU3

AREA: KITCHEN

| Unit Data | | |
|---------------------|-------------|--------------------|
| | Design | Actual |
| MFG | TRANE | CARRIER |
| Serial Num | - | 5018P87914 |
| Model Num | YSC072E3RMA | 48TCED08A2A6A0A0G0 |
| Type | RTU | RTU |
| Configuration | VERTICAL | VERTICAL |
| Num OA Filters 1 | - | 1 |
| OA Filter Size 1 | - | 36X20 |
| Num Final Filter 1 | - | 4 |
| Final Filter Size 1 | - | 16X20X2 |

| Motor Data | | |
|----------------|--------|----------|
| | Design | Actual |
| Motor MFG | - | MARATHON |
| Frame | - | 56HZ |
| Horsepower | 1 | 3 |
| Motor Rpm | - | 1735 |
| Phase | 3 | 3 |
| Rated Voltage | 208 | 208 |
| Rated Amperage | - | 8.1 |

| Drive Data | | |
|--------------------|--------|-------------|
| | Design | Actual |
| Motor Sheave Size | - | 1VL50 |
| Motor Bore Size | - | 0.875" |
| Motor Sheave SetPt | - | 2 TURNS OUT |
| Fan Sheave Size | - | AFD84 |
| Fan Sheave Bore | - | 1" |
| Belt CL Distance | - | 17.5" |
| Num of Belts | - | 1 |
| Belt Size | - | AX52 |
| Belt Alignment | - | GOOD |

| Test Data | | |
|------------------------|--------|--------------------|
| | Design | Actual |
| SF CFM | 3000 | 2730 |
| SF RPM | - | 894 |
| RA CFM | 2650 | 2352 |
| OA CFM | 350 | 378 |
| RL Voltage | - | 214.1/215.5/212.5 |
| RL Amperage | - | 8.1/9.2/7.55 |
| SF Rotation | - | CCW |
| RA Damper Position | - | MECHANICAL LINKAGE |
| Min OA Damper Position | - | 3.35V |
| Min OA Damper Type | - | ECONOMIZER |
| OA Enthalpy Setpt | - | 55 DB |

| Performance Data | | |
|------------------|--------|--------|
| | Design | Actual |
| MA Plenum SP | - | -0.65" |
| Fan Suction SP | - | -1.05" |
| Fan Discharge SP | - | 0.54" |
| Total ESP | 1.0" | 1.19" |
| Fan Total SP | - | 1.59" |

| General | | |
|----------------------------|--------|--------------------------|
| | Design | Actual |
| Fan Rotation Correct | - | YES |
| Unit Filters Clean | - | YES/CONSTRUCTION FILTERS |
| Condensate Drain Installed | - | YES |

Completed By: Tyler Youells

Notes: LOW SPEED DAMPER SETPOINT: 3.75V

National TAB

Project:10-10 SWEETGREEN #DAL - SOUTHLAKE,TX

AHU/RTU



Comfort. Under control.

Diffuser Supply (GRD)

RTU3/KITCHEN

| Asset | | | | | | | | | |
|------------|-------------|------|------|------------|----|--------|--------|-----------|-------------|
| Asset Name | Location | Type | Size | DESIGN CFM | AK | CFM(1) | CFM(2) | FINAL CFM | % to design |
| SGRD1 | DINING | F | 225 | 250 | 1 | 230 | 303 | 235 | 94.0 |
| SGRD2 | DINING | E | 450 | 500 | 1 | 252 | 350 | 442 | 88.4 |
| SGRD3 | SERVELIN E | G | 394 | 437 | 1 | 341 | 417 | 392 | 89.7 |
| SGRD4 | SERVELIN E | G | 394 | 438 | 1 | 278 | 350 | 414 | 94.5 |
| SGRD5 | WAREWASH | A | 338 | 375 | 1 | 336 | 411 | 346 | 92.3 |
| SGRD6 | BOH KITCHEN | A | 394 | 438 | 1 | 331 | 407 | 405 | 92.5 |
| SGRD7 | TRASH | A | 55 | 62 | 1 | 104 | 128 | 58 | 93.5 |
| SGRD8 | COLD PREP | A | 225 | 250 | 1 | 234 | 288 | 226 | 90.4 |
| SGRD9 | OFFICE | G | 225 | 250 | 1 | 145 | 177 | 212 | 84.8 |

Completed By: Tyler Youells on

National TAB

Project: 10-10 SWEETGREEN #DAL - SOUTHLAKE, TX

System/Unit: FAN - Exhaust



Comfort. Under control.

Asset: EF1

AREA:HD1

| Unit Data | | |
|----------------------|-------------|-------------|
| | Design | Actual |
| MFG | CAPTIVEAIRE | CAPTIVEAIRE |
| Model Num | DU50HFA | DU50HFA |
| Serial Num | - | 5548878 |
| Type | UPBLAST | UPBLAST |
| Configuration | VERTICAL | VERTICAL |

| Motor Data | | |
|-------------------------|--------|-------------|
| | Design | Actual |
| Motor MFG | - | TELCO GREEN |
| Frame | - | NL |
| Horsepower | 0.5 | 0.5 |
| Motor Rpm | - | 1800 |
| Phase | 1 | 1 |
| Voltage (rated) | 115 | 115 |
| Amperage (rated) | - | 6.3 |
| Service Factor | - | 1 |

| Test Data | | |
|-------------------------|--------|--------|
| | Design | Actual |
| CFM | 950 | 894 |
| Fan RPM | 1310 | 1449 |
| Fan Rotation | - | CCW |
| Motor RPM | - | 1449 |
| System SetPt | - | 75% |
| RL Voltage | - | 122.2 |
| RL Amperage | - | 6.32 |
| Total ESP | 0.700" | 0.97" |
| Fan Inlet SP | - | -0.97" |
| Fan Discharge SP | - | ATM |

Completed By: Tyler Youells

Notes:

National TAB

Project: 10-10 SWEETGREEN #DAL - SOUTHLAKE, TX

System/Unit: FAN - Exhaust



Comfort. Under control.

Asset: EF2

AREA: RESTROOMS

| Unit Data | | |
|---------------|-------------|-------------|
| | Design | Actual |
| MFG | CAPTIVEAIRE | CAPTIVEAIRE |
| Model Num | SIF9DD | SIFDD |
| Serial Num | - | 5548878 |
| Type | INLINE | INLINE |
| Configuration | HORIZONTAL | HORIZONTAL |

| Motor Data | | |
|------------------|--------|-------------|
| | Design | Actual |
| Motor MFG | - | TELCO GREEN |
| Frame | - | NL |
| Horsepower | 0.167 | 0.25 |
| Motor Rpm | - | 1800 |
| Phase | 1 | 1 |
| Voltage (rated) | 115 | 115 |
| Amperage (rated) | - | 2.9 |
| Service Factor | - | 1 |

| Test Data | | |
|------------------|--------|--------|
| | Design | Actual |
| CFM | 225 | 234 |
| Fan RPM | 1758 | 1026 |
| Fan Rotation | - | CCW |
| Motor RPM | - | 1026 |
| System SetPt | - | 57% |
| RL Voltage | - | 122.1 |
| RL Amperage | - | 1.4 |
| Total ESP | 0.7" | 0.46" |
| Fan Inlet SP | - | -0.34 |
| Fan Discharge SP | - | 0.12 |

Completed By: Tyler Youells

Notes:

National TAB

Project:10-10 SWEETGREEN #DAL - SOUTHLAKE, TX

FAN - Exhaust



Comfort. Under control.

Diffuser Ret/Exh (GRD)

EF2/RESTROOMS

| Asset | | | | | | | | | |
|------------|--------------|------|------|------------|----|--------|--------|-----------|-------------|
| Asset Name | Location | Type | Size | DESIGN CFM | AK | CFM(1) | CFM(2) | FINAL CFM | % to design |
| EGRD1 | RESTROO M #1 | D | 8" | 75 | 1 | 115 | - | 82 | 109.3 |
| EGRD2 | RESTROO M #2 | D | 6" | 75 | 1 | 189 | - | 80 | 106.7 |
| EGRD3 | TRASH ROOM | D | 6" | 75 | 1 | 79 | - | 72 | 96.0 |

Completed By: Tyler Youells on

National TAB

Project: 10-10 SWEETGREEN #DAL - SOUTHLAKE, TX

System/Unit: Kitchen Hood Type II



Comfort. Under control.

Asset: HD1

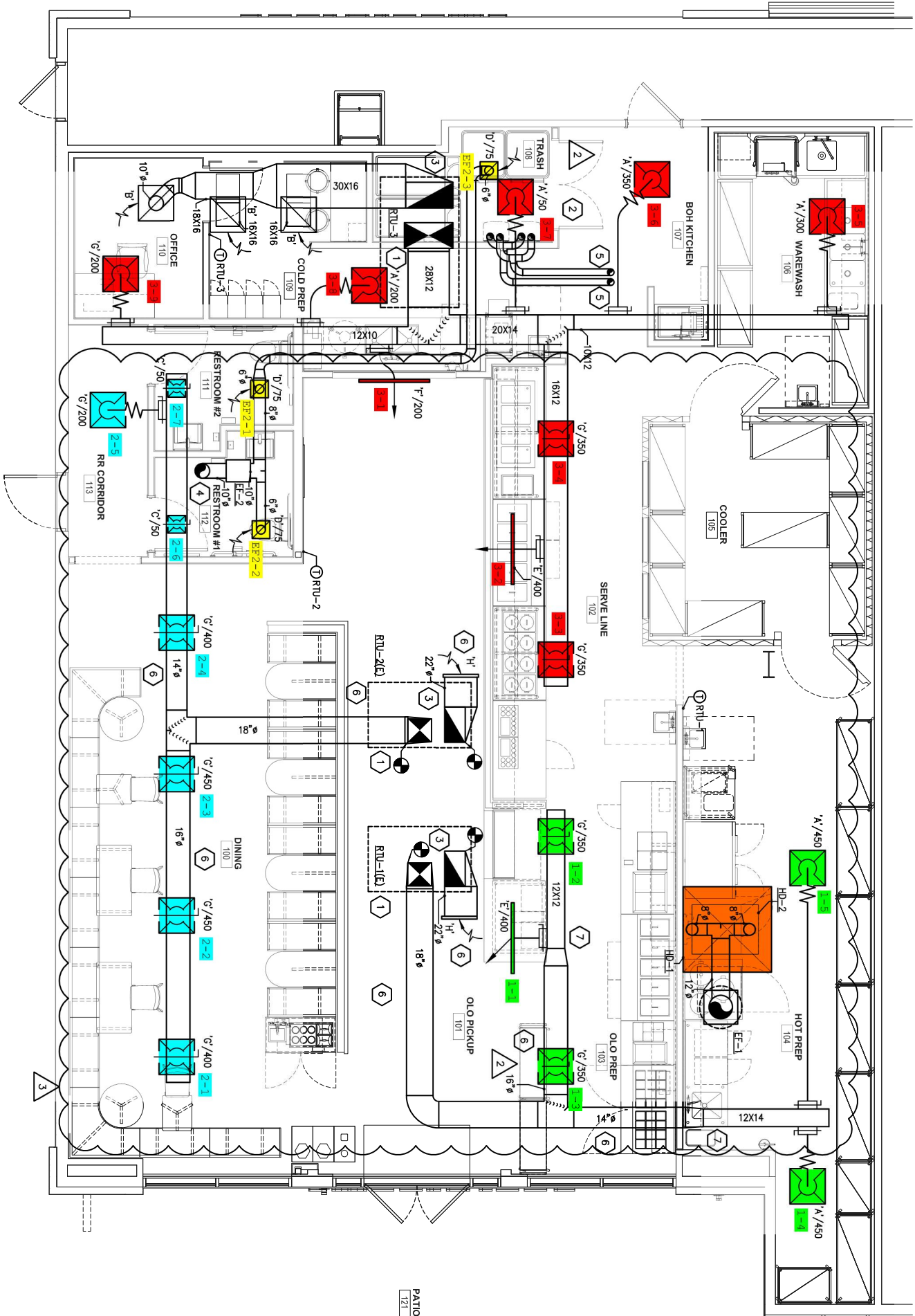
AREA:

| Unit Data | | |
|--------------------|-------------------|-------------------|
| | Design | Actual |
| MFG | CAPTIVEAIRE | CAPTIVEAIRE |
| Model Num | 6012 VHB | 6012 VHB |
| Serial Num | - | 5548878 |
| Type | TYPE II CANOPY | TYPE II CANOPY |
| Hood length | 48" | 48" |
| Hood Width | 60" | 60" |

| Test Data | | |
|--------------------|--------|--------|
| | Design | Actual |
| Exhaust CFM | 950 | 894 |

Completed By: Tyler Youells

Notes:



PATIO
121