

Report By:

National TAB
1329 E. KEMPER ROAD
SUITE 4210
CINCINNATI, OH 45246

NATIONAL

TAB

Comfort. Under control.

Report: Test files
Function: Test, Adjust, & Balance
Date1: 09/23/2022

PROJECT

08-29 CARMAX #7159 MODESTO, CA

4300 MCHENRY AVE

MODESTO, CA

Client

Comfort Systems USA

National TAB

Project: 08-29 CARMAX #7159 MODESTO, CA

Table Of Contents

Section	Page #
Summary 1	3
grd layout	6
change name	12
User Uploaded File	13

Project Summary

The summary below provides a quick understanding of our scope of work and general testing procedures. Enclosed in the report is further detail about your building performance including recommendations, asset data, and pictures. Our focus is to work with the trades to remedy any issues or deficiencies during the actual field balancing and not after the balancing has occurred to achieve a positive environment and outcome. The level of success is determined by the availability of the trades, possible parts needed, or time constraints.

RTU's (Roof Top Units) w/ Diffusers

Each of the RTU's were measured at their terminal devices or via traverse to establish a total flow for that unit. Each RTU was adjusted to within tolerance of the engineer's design flow. Each outlet was then adjusted to within tolerance of the design flow. Outside air was measured by reading the intake air opening with a velocity grid and multiplying by the free area. The outside air damper was adjusted until the airflow was within the design requirements. Any equipment that fell outside of that tolerance is noted throughout the report.

General Exhaust Fans w/ Grilles

The general exhaust fans were measured by reading each air device with a flow hood. The total airflow for each fan is equivalent to the sum of these readings. Fan speed was then adjusted so that the airflow was within tolerance of design. Each terminal device was balanced to within tolerance of the design volume using the installed volume dampers. Any equipment that fell outside of this tolerance is noted throughout the report.

Final Building Tests

After completing the test and balance the final building pressure was measured. It was confirmed that the building pressure fell within acceptable tolerances of $-0.02''$ wc to $+0.02''$ wc and that the pressure measurement coincides with the actual and design net airflow. Any deviations from these standards are noted throughout the report.

The hood capture was tested at the perimeter of the hood and the cook top level with the equipment heat on to ensure satisfactory hood capture and containment.

Project Summary

The summary below provides a quick understanding of our scope of work and general testing procedures. Enclosed in the report is further detail about your building performance including recommendations, asset data, and pictures. Our focus is to work with the trades to remedy any issues or deficiencies during the actual field balancing and not after the balancing has occurred to achieve a positive environment and outcome. The level of success is determined by the availability of the trades, possible parts needed, or time constraints.

RTU's (Roof Top Units) w/ Diffusers

Each of the RTU's were measured at their terminal devices or via traverse to establish a total flow for that unit. Each RTU was adjusted to within tolerance of the engineer's design flow. Each outlet was then adjusted to within tolerance of the design flow. Outside air was measured by reading the intake air opening with a velocity grid and multiplying by the free area. The outside air damper was adjusted until the airflow was within the design requirements. Any equipment that fell outside of that tolerance is noted throughout the report.

General Exhaust Fans w/ Grilles

The general exhaust fans were measured by reading each air device with a flow hood. The total airflow for each fan is equivalent to the sum of these readings. Fan speed was then adjusted so that the airflow was within tolerance of design. Each terminal device was balanced to within tolerance of the design volume using the installed volume dampers. Any equipment that fell outside of this tolerance is noted throughout the report.

Final Building Tests

After completing the test and balance the final building pressure was measured. It was confirmed that the building pressure fell within acceptable tolerances of $-0.02''$ wc to $+0.02''$ wc and that the pressure measurement coincides with the actual and design net airflow. Any deviations from these standards are noted throughout the report.

The hood capture was tested at the perimeter of the hood and the cook top level with the equipment heat on to ensure satisfactory hood capture and containment.

Project Summary

The summary below provides a quick understanding of our scope of work and general testing procedures. Enclosed in the report is further detail about your building performance including recommendations, asset data, and pictures. Our focus is to work with the trades to remedy any issues or deficiencies during the actual field balancing and not after the balancing has occurred to achieve a positive environment and outcome. The level of success is determined by the availability of the trades, possible parts needed, or time constraints.

RTU's (Roof Top Units) w/ Diffusers

Each of the RTU's were measured at their terminal devices or via traverse to establish a total flow for that unit. Each RTU was adjusted to within tolerance of the engineer's design flow. Each outlet was then adjusted to within tolerance of the design flow. Outside air was measured by reading the intake air opening with a velocity grid and multiplying by the free area. The outside air damper was adjusted until the airflow was within the design requirements. Any equipment that fell outside of that tolerance is noted throughout the report.

General Exhaust Fans w/ Grilles

The general exhaust fans were measured by reading each air device with a flow hood. The total airflow for each fan is equivalent to the sum of these readings. Fan speed was then adjusted so that the airflow was within tolerance of design. Each terminal device was balanced to within tolerance of the design volume using the installed volume dampers. Any equipment that fell outside of this tolerance is noted throughout the report.

Final Building Tests

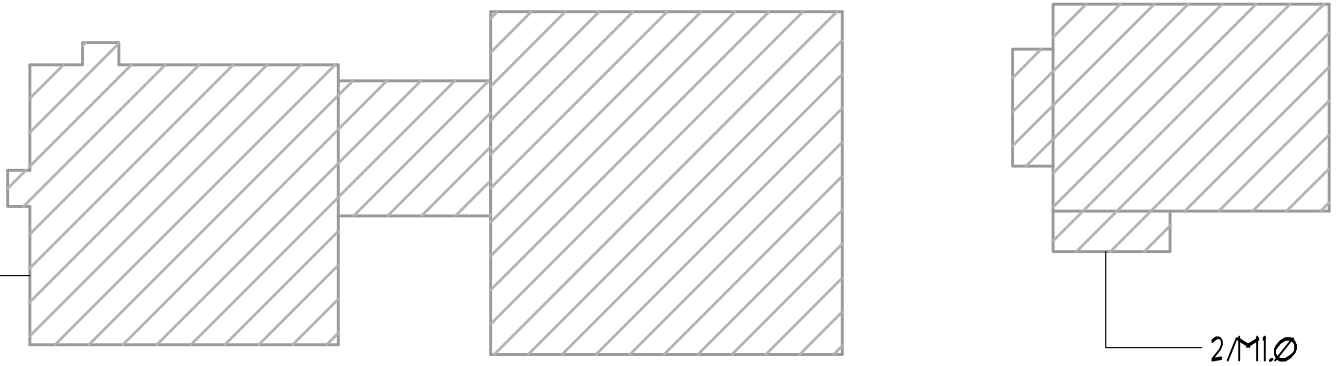
After completing the test and balance the final building pressure was measured. It was confirmed that the building pressure fell within acceptable tolerances of $-0.02''$ wc to $+0.02''$ wc and that the pressure measurement coincides with the actual and design net airflow. Any deviations from these standards are noted throughout the report.

The hood capture was tested at the perimeter of the hood and the cook top level with the equipment heat on to ensure satisfactory hood capture and containment.

EF-19 ①

1

BE REMOVED & REPLACED & EXISTING CURB TO REMAIN
CONDENSATE TO EXISTING
TO EXISTING
REQUIRED
IT TO REMAIN
CURB REPLACED WITH NEW UNIT ON NEW CURB
FAN. CAP CURB. CURB CAP TO BE INSULATED WITH 2" POLYSTYRENE
ROOF. SEE 1/M2.1 FOR CONTINUATION



KEY PLAN

CARmax

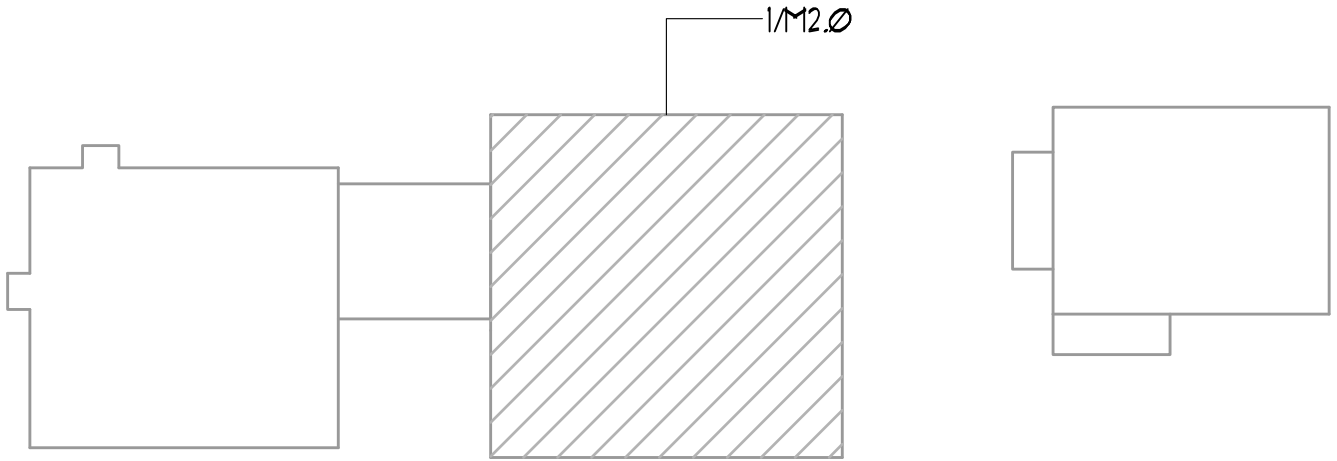
THE AUTO SUPERSTORE

CARMAX THE AUTO SUPERSTORE WEST COAST, INC.
12800 TUCKAHOE CREEK PARKWAY, RICHMOND, VA 23238
(804) 747-0422

STORE NO. 7159
4300 MCHENRY AVE.
MODESTO, CALIFORNIA

PROJECT NO	20241
DATE	20 JAN 2021
SHEET TITLE	ROOF PLANS - HVAC
SHEET NO	M1.0

PLAN — HVAC



KEY PLAN

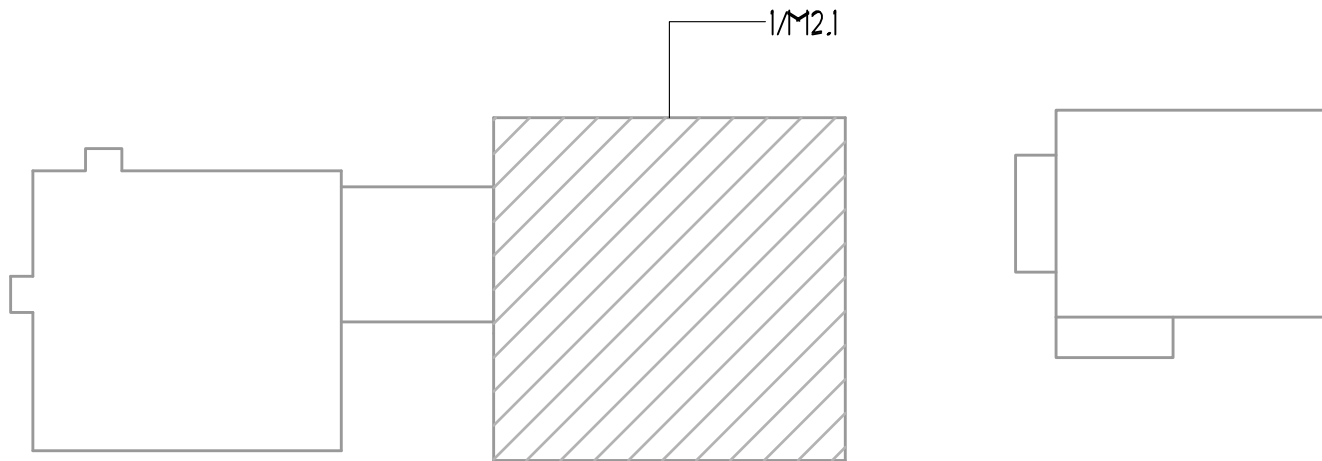
CARmax

THE AUTO SUPERSTORE

CARMAX THE AUTO SUPERSTORE WEST COAST, INC.
12800 TUCKAHOE CREEK PARKWAY, RICHMOND, VA 23238
(804) 747-0422

STORE NO. 7159
4300 MCHENRY AVE.
MODESTO, CALIFORNIA

PROJECT NO	20241
DATE	20 JAN 2021
SHEET TITLE	DEMO PART PLAN - HVAC
SHEET NO	M2.0



KEY PLAN

CARmax

THE AUTO SUPERSTORE

CARMAX THE AUTO SUPERSTORE WEST COAST, INC.
12800 TUCKAHOE CREEK PARKWAY, RICHMOND, VA 23238
(804) 747-0422

**STORE NO. 7159
4300 MCHENRY AVE.
MODESTO, CALIFORNIA**

PROJECT NO

20241

DATE

20 JAN 2021

SHEET TITLE

FLOOR PLAN - HVAC

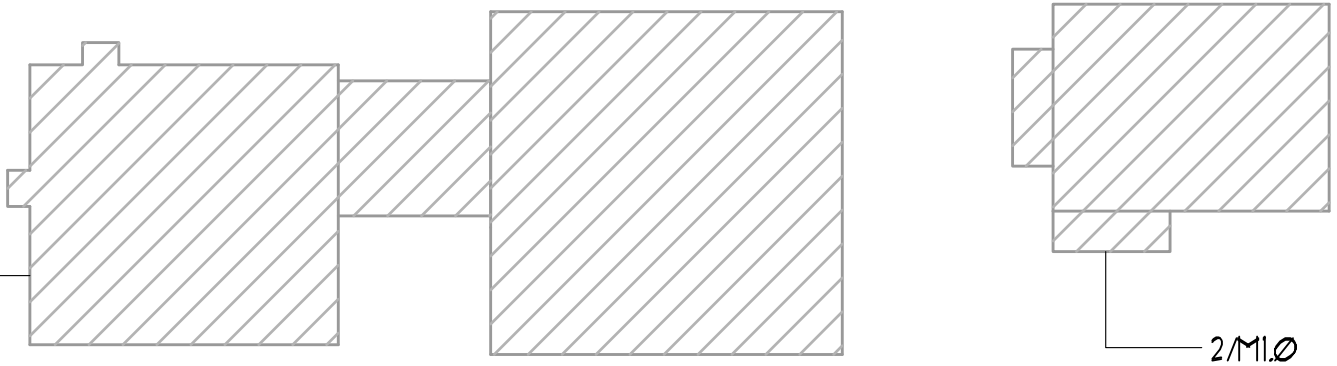
SHEET NO

M2.1

EF-19 ①

1

BE REMOVED & REPLACED & EXISTING CURB TO REMAIN
DENSATE TO EXISTING
TO EXISTING
REQUIRED
IT TO REMAIN
RB REPLACED WITH NEW UNIT ON NEW CURB
FAN. CAP CURB. CURB CAP TO BE INSULATED WITH 2" POLYSTYRENE
ROOF. SEE 1/M2.1 FOR CONTINUATION



KEY PLAN

CARmax

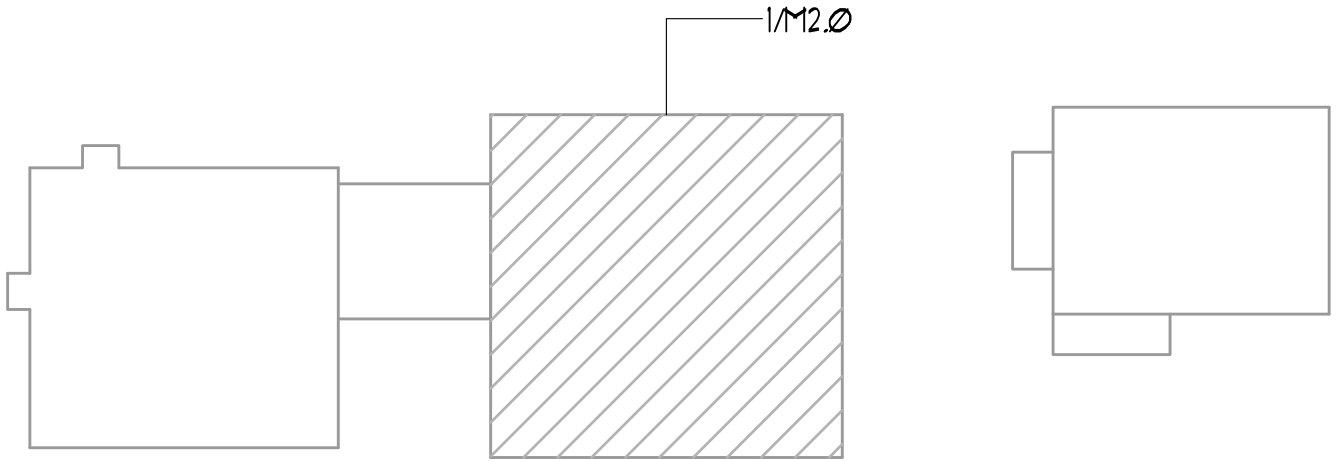
THE AUTO SUPERSTORE

CARMAX THE AUTO SUPERSTORE WEST COAST, INC.
12800 TUCKAHOE CREEK PARKWAY, RICHMOND, VA 23238
(804) 747-0422

STORE NO. 7159
4300 MCHENRY AVE.
MODESTO, CALIFORNIA

PROJECT NO	20241
DATE	20 JAN 2021
SHEET TITLE	ROOF PLANS - HVAC
SHEET NO	M1.0

PLAN — HVAC



KEY PLAN

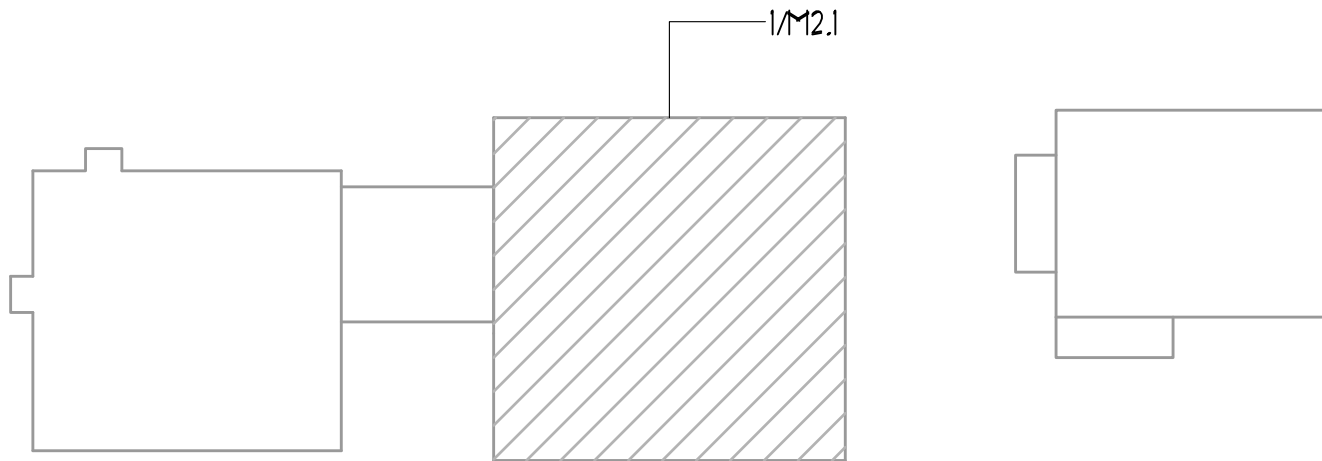
CARmax

THE AUTO SUPERSTORE

CARMAX THE AUTO SUPERSTORE WEST COAST, INC.
12800 TUCKAHOE CREEK PARKWAY, RICHMOND, VA 23238
(804) 747-0422

STORE NO. 7159
4300 MCHENRY AVE.
MODESTO, CALIFORNIA

PROJECT NO	20241
DATE	20 JAN 2021
SHEET TITLE	DEMO PART PLAN - HVAC
SHEET NO	M2.0



KEY PLAN

CARmax

THE AUTO SUPERSTORE

CARMAX THE AUTO SUPERSTORE WEST COAST, INC.
12800 TUCKAHOE CREEK PARKWAY, RICHMOND, VA 23238
(804) 747-0422

**STORE NO. 7159
4300 MCHENRY AVE.
MODESTO, CALIFORNIA**

PROJECT NO

20241

DATE

20 JAN 2021

SHEET TITLE

FLOOR PLAN - HVAC

SHEET NO

M2.1



