

HVAC KEY NOTES

- 1 PROVIDE NEW ELECTRIC COOLING/ GAS HEATING ROOFTOP UNIT WITH PRE-FABRICATED, MINIMUM 14" INCH INSULATED ROOF CURB. MAINTAIN MINIMUM HEIGHT OF 8 INCHES FROM ROOF SURFACE. REFER TO HVAC SCHEDULE ON SHEET M3.1. FIELD VERIFY AND COORDINATE WITH STRUCTURAL AND ALL LOCAL AND STATE REQUIREMENTS PRIOR TO BID AND CONSTRUCTION.
- 2 FIELD VERIFY EXHAUST AIR MAINTAINS A 10 FOOT MINIMUM CLEARANCE FROM ANY FRESH AIR INTAKE AND COMPLIES WITH ALL CODE REQUIREMENTS.
- 3 MECHANICAL CONTRACTOR TO ADJUST PATTERN DEFLECTORS TO THROW STRAIGHT DOWN.
- 4 PROVIDE NEW AIR DEVICE. MAXIMUM LENGTH OF FLEXIBLE DUCT RUN-OUT IS 4 FEET, NO EXCEPTIONS. FIELD VERIFY & COORDINATE LOCATIONS PRIOR TO BID & CONSTRUCTION. RE-BALANCE AIR QUANTITY AS SHOWN ON PLAN. PROVIDE WITH MANUAL VOLUME DAMPER WITH ACCESSIBILITY. ANY DEFICIENCIES AND OR DISCREPANCIES SHALL BE REPORTED TO ARCHITECT/ENGINEER IMMEDIATELY.
- 5 PROVIDE NEW KITCHEN HOOD EXHAUST FAN REPLACING THE EXISTING FAN THROUGH THE EXISTING ROOF OPENING. LOCATE A MINIMUM OF 10 FT FROM PARAPET WALLS IF PARAPET IS LOWER THAN 42" OR FROM ANY NEW OR EXISTING OUTSIDE AIR INTAKE AS REQUIRED. COORDINATE EXACT LOCATION IN FIELD WITH EXISTING EQUIPMENT AND PIPING.
- 6 EXISTING ROOFTOP HVAC UNIT TO REMAIN. MECHANICAL CONTRACTOR TO CLEAN AND ADJUST UNIT, CHEMICALLY CLEAN COILS, PERFORM AN OIL SAMPLE TEST ON COMPRESSORS TO VERIFY CONDITION, REPLACE BELTS, VERIFY ALL CONTROLS ARE FUNCTIONAL AND MAKE SURE ALL EQUIPMENT IS IN PROPER OPERATING CONDITION. REPLACE ANY DEFECTIVE PARTS OR EQUIPMENT, GREASE AND/OR REPLACE IF REQUIRED, FAN BEARINGS, CHECK SHAFT FOR SCORING AND CHECK MOTORS FOR PROPER AMPERAGE. DRAW CLEAN OR REPLACE CONDENSATE DRAIN LINE AS REQUIRED. REBALANCE CFM AS SHOWN ON PLANS, RTU SCHEDULE, & KITCHEN/DINING PRESSURIZATION SCHEDULE. FURNISH UNIT WITH THREE SETS OF STANDARD FILTERS. CONTRACTOR TO REPLACE FILTERS JUST PRIOR TO AIR BALANCE AND ONCE AGAIN AFTER FINAL STORE CLEANING IS COMPLETE. REFER TO ROOFTOP UNIT SCHEDULE SHEET M3.1 FOR FURTHER INFORMATION AND ADDITIONAL REQUIREMENTS. REPORT IN WRITING ANY PROBLEMS WHICH WOULD REQUIRE REPLACEMENT OF ROOFTOP UNIT INSTEAD OF REUSE TO THE TENANT'S CONSTRUCTION MANAGER. FIELD VERIFY EXACT CONDITION AND LOCATION PRIOR TO BID.
- 7 STRONG SYSTEMS SHALL SUPPLY AND INSTALL CO2 SENSOR ANALOX-AX60. SENSOR SHALL BE MOUNTED AT 12" AFF WITH SPLASH GUARD AND CAGE. ELECTRICAL CONTRACTOR TO PROVIDE SINGLE-GANG J-BOX WITH 1/2" CONDUIT EXTENDED TO ABOVE ACCESSIBLE CEILING SPACE. INSTALL PER MANUFACTURERS RECOMMENDATIONS AND PER LOCAL CODE REQUIREMENTS. FIELD VERIFY EXACT LOCATION AND ALL REQUIREMENTS PRIOR TO BID AND CONSTRUCTION. FOR MORE INFORMATION CONTACT STRONG SYSTEMS INTERNATIONAL, INC. CHRIS VERCH (770) 729-1199 OR (770) 462-2501.
- 8 STRONG SYSTEMS SHALL SUPPLY AND INSTALL CO2 ANNUNCIATOR MOUNTED AT 60" AFF. ELECTRICAL CONTRACTOR TO PROVIDE SINGLE-GANG J-BOX WITH 1/2" CONDUIT EXTENDED TO ABOVE ACCESSIBLE CEILING SPACE. INSTALL PER MANUFACTURERS RECOMMENDATIONS AND PER LOCAL CODE. FIELD VERIFY EXACT LOCATION AND ALL REQUIREMENTS PRIOR TO BID AND CONSTRUCTION. FOR MORE INFORMATION CONTACT STRONG SYSTEMS INTERNATIONAL, INC. CHRIS VERCH (770) 729-1199 OR (770) 462-2501.
- 9 STRONG SYSTEMS SHALL SUPPLY AND INSTALL CO2 CENTRAL CONTROL UNIT MOUNTED AT 60" AFF. ELECTRICAL CONTRACTOR TO PROVIDE SINGLE-GANG J-BOX WITH 1/2" CONDUIT EXTENDED TO ABOVE ACCESSIBLE CEILING SPACE. INSTALL PER MANUFACTURERS RECOMMENDATIONS AND PER LOCAL CODE. FIELD VERIFY EXACT LOCATION AND ALL REQUIREMENTS PRIOR TO BID AND CONSTRUCTION. COORDINATE WITH ELECTRICAL DRAWING E22 FOR EXACT LOCATION. FOR MORE INFORMATION CONTACT STRONG SYSTEMS INTERNATIONAL, INC. CHRIS VERCH (770) 729-1199 OR (770) 462-2501.
- 10 CONTRACTOR TO INSTALL OVERFLOW SWITCH INSIDE ROOFTOP UNIT DRAIN PAN. ON DOWNFLOW UNITS AND ALL OTHER COILS THAT DO NOT HAVE A SECONDARY DRAIN AND DO NOT HAVE A MEANS TO INSTALL AN AUXILIARY DRAIN PAN, A WATER-LEVEL MONITORING DEVICE SHALL BE INSTALLED INSIDE THE PRIMARY DRAIN PAN. THIS DEVICE SHALL SHUT OFF THE EQUIPMENT SERVED IN THE EVENT THAT THE PRIMARY DRAIN BECOMES RESTRICTED. EXTERNALLY INSTALLED DEVICES AND DEVICES INSTALLED IN THE DRAIN LINE SHALL NOT BE PERMITTED.
- 11 NEW MANUAL PULL STATION SHALL BE LOCATED 10 FEET MINIMUM TO 20 FEET MAXIMUM FROM HOOD, ONE AT OR NEAR EVERY POINT OF EGRESS FROM THE HOOD COOKING AREA. PULL STATION SHALL BE SECURELY MOUNTED NOT LESS THAN 42" (INCHES) OR MORE THAN 48" (INCHES) FROM THE FLOOR. PROVIDE SIGNAGE FOR PULL STATION.
- 12 PROVIDE A LENOX FACTORY INSTALLED RETURN AND SUPPLY SIDE SMOKE DETECTOR. REFER TO SCHEDULE ON SHEET M3.1 AND LENOX SMOKE DETECTOR AND ANNUNCIATOR WIRING DIAGRAM ON SHEET M4.2. SEE ADDED BOXED NOTE SHEET M3.1 HVAC SCHEDULE REGARDING SUPPLY SIDE SMOKE DETECTOR.
- 13 BRANCH TAKE-OFFS ARE NOT TO BE LOCATED CLOSER THAN 3'-0" FROM ANY ELBOW INCLUDING THE SUPPLY AIR DROP FROM CURB.
- 14 R/A DUCT DROP TO BE FULL SIZE OF CURB CONNECTION. PROVIDE PLENUM BOX ABOVE CEILING AS SHOWN ON PLAN.
- 15 SEE ELEVATION ON M2 FOR C.J. FAN DUCTING REQUIREMENTS.

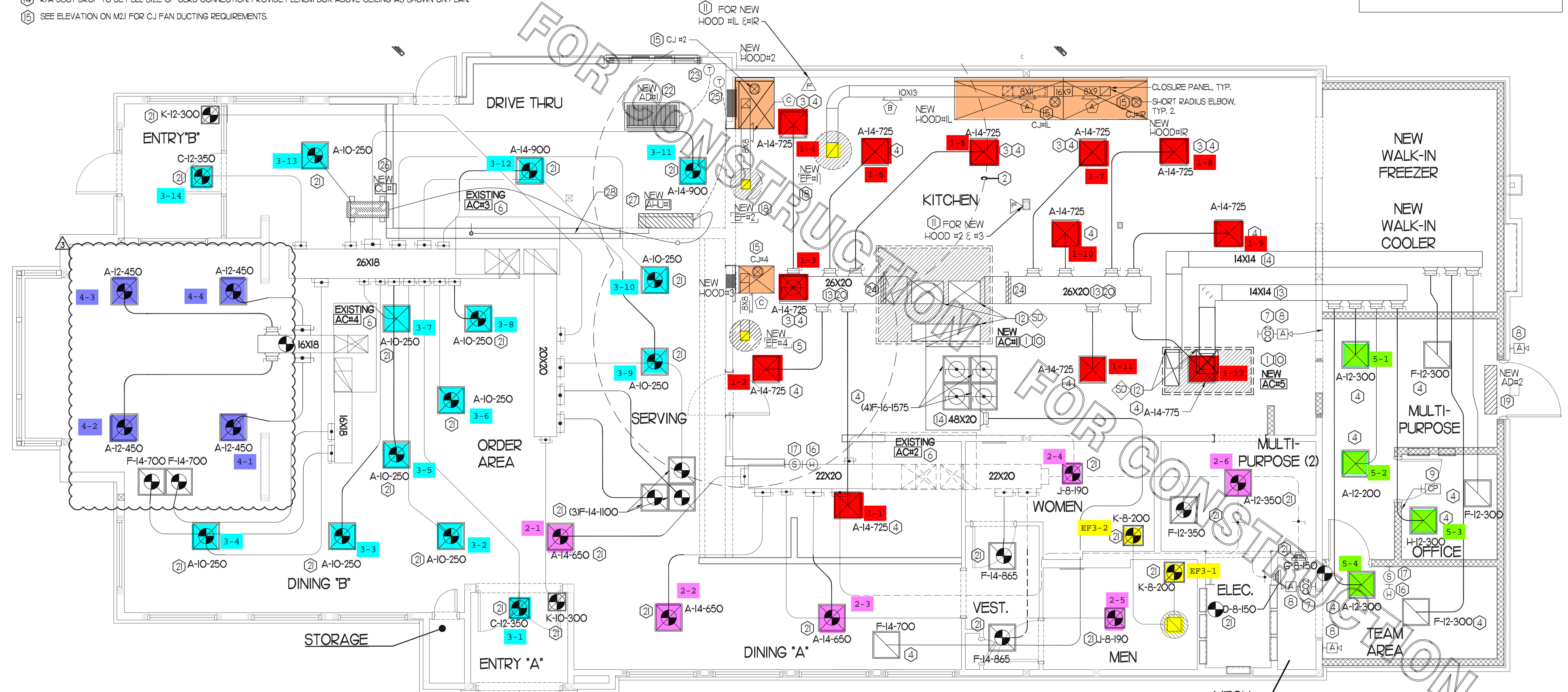
- 16 MOUNT NEW LENOX HUMIDITY SENSOR ON WALL ABOVE SPACE TEMP SENSOR AND ROUTE WIRING TO UNIT ON ROOF.
- 17 MOUNT NEW REMOTE TEMPERATURE SENSOR ON WALL AT 5'-0" AFF AND ROUTE WIRING BACK TO SUNCOAST TEMP CONTROL PANEL. FOR SENSOR SERVING KITCHEN ACH, 5'-8" AFF. COORDINATE EXACT LOCATION WITH KITCHEN EQUIPMENT PRIOR TO BID AND CONSTRUCTION.
- 18 PROVIDE NEW FAN WITH NEW CURB AT LOCATION SHOWN ON PLAN. LOCATE A MINIMUM OF 10 FT FROM PARAPET WALLS IF PARAPET IS LOWER THAN 42" OR FROM ANY NEW OR EXISTING OUTSIDE AIR INTAKE. COORDINATE EXACT LOCATION IN FIELD WITH EXISTING EQUIPMENT AND PIPING. SEE DETAIL ON M4.1 FOR ORIENTATION OF HINGE SIDE OF FAN ON CURB.
- 19 EXISTING AIR CURTAIN TO BE REPLACED AS SHOWN ON PLAN. FIELD VERIFY EXACT REQUIREMENTS PRIOR TO BID.
- 20 20X26 VERTICAL DROP. PROVIDE TURNING VANES IN ELBOW. ELBOW TO BE PARTIALLY LOCATED WITHIN STRUCTURE. BOTTOM OF ELBOW TO BE AT SAME ELEVATION AS BOTTOM OF 26X20 SUPPLY MAIN. 26X20 SUPPLY MAIN TO BE LOCATED ENTIRELY BELOW JOISTS. HOLD 26X20 SUPPLY MAIN AS HIGH AS POSSIBLE DUE TO LIMITED CLEARANCE.
- 21 REPLACE EXISTING AIR DEVICE WITH NEW. CONNECT TO EXISTING DUCT SYSTEM. CONTRACTOR SHALL INSTALL NEW DUCT AS REQUIRED. ALL NEW ADDED DUCTWORK SHALL BE RIGID. USE OF FLEX DUCT IS LIMITED TO A MAXIMUM OF 4'-0" AROUND OBSTRUCTIONS. NO EXCEPTIONS (TYP. ALL). INSTALL HARD 90'S DOWN TO SUPPLY AIR & RETURN AIR GRILLES. SEE TAKE-OFF DETAIL ON SHEETS M4.1 & SPECIFICATIONS ON MECH REBALANCE TO AIR QUANTITY AS SHOWN ON PLAN. PROVIDE WITH ACCESSIBLE MANUAL VOLUME DAMPER. WHERE DUCTWORK IS BEING RE-USED, PROVIDE A 4 INCH COLLAR ON EACH DIFFUSER, STRAP & TAPE THE DIFFUSER TO ANY EXISTING DUCTWORK. SEE DIFFUSER & GRILLE DETAIL FOR NEW CEILING ON SHEET M4.1. INSULATE AND RECONNECT AS REQUIRED (TYP) ALL. CONTRACTOR SHALL VERIFY AND COORDINATE ALL DEVICE LOCATIONS WITH LIGHTING AND CEILING LAYOUT AND ALL WALL ELEMENTS AS REQUIRED PRIOR TO BID.
- 22 AIR CURTAIN, ADH MOUNTED IN CEILING GRID • 15" OFF THE EXTERIOR WALL. MECHANICAL CONTRACTOR SHALL ADJUST AIR DEFLECTORS TOWARD BOTTOM OF TORMAX DOOR OPENING.
- 23 LOCATE AIR CURTAIN T'STAT AT 5'-0" AFF. COORDINATE EXACT LOCATION WITH OTHER TRADES. ROUTE WIRING BACK TO AHJ AT WALL.
- 24 PROVIDE RUSKIN CD35 MANUAL BALANCING DAMPER WITH 6" MAXIMUM BLADE WIDTH, OPPOSED BLADE ACTION, LOCKING QUADRANT HANDLE WITH 2" STANDOFF AND 16 GA GALVANIZED BLADE AND FRAME CONSTRUCTION.
- 25 LOCATE AHJ T'STAT AT 5'-0" AFF. COORDINATE EXACT LOCATION WITH OTHER TRADES. ROUTE WIRING BACK TO AHJ AT WALL.
- 26 SET CONDENSING UNIT ON ROOF USING TWO CURBS PLUS CPES#1 EQUIPMENT CURBS. SECURE CONDENSING UNIT TO CURBS ARRANGED IN PARALLEL. SET LONG SIDE OF CURB PARALLEL TO ROOF SLOPE FLASH INTO ROOF BY GC. FINAL LOCATION TO BE DETERMINED IN THE FIELD. ALL MAINTENANCE CLEARANCE OF NEW AND EXISTING EQUIPMENT SHALL BE MAINTAINED.
- 27 LOCATE AHJ IN MOUNTED 7'-0" AFF TO BOTTOM OF UNIT. ROUTE REFRIGERANT PIPING ABOVE CEILING AND UP THRU ROOF TO CONDENSING UNIT. REFER TO M3.1 FOR MORE INFORMATION.
- 28 RUN 5/8" CONDENSATE LINE IN WALL DOWN TO DRAIN.

HVAC GENERAL NOTES

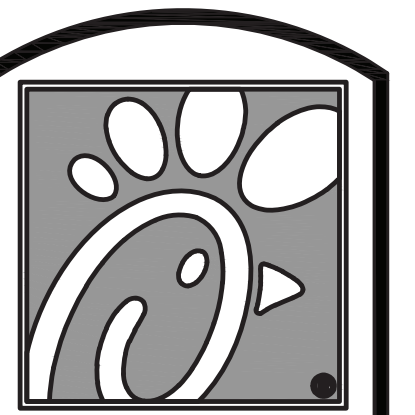
1. DUCT SIZES SERVING DIFFUSERS AND GRILLES ARE SAME SIZE AS DIFFUSER OR GRILLE NECK UNLESS NOTED OTHERWISE.
2. MECHANICAL CONTRACTOR SHALL BALANCE HVAC SYSTEM AS SHOWN ON THE PLAN & RTU SCHEDULE ON SHEET M-3.1. IF AIR FLOWS DIFFER BY MORE THAN 5%, CONTACT OFA CONSTRUCTION MANAGER.
3. NO PIPING OR DUCTWORK ALLOWED ABOVE ANY ELECTRICAL/CONTROL PANELS.
4. COORDINATE NEW WORK WITH EXISTING CONDUITS, STRUCTURE, & PIPING. FIELD VERIFY EXISTING CONDITIONS PRIOR TO COMMENCING WORK. CONTRACTOR TO NOTIFY DESIGN TEAM WITHOUT DELAY IF ACTUAL LOCATION OF EXISTING MECHANICAL EQUIPMENT DOES NOT MATCH FLOOR PLAN.
5. CONTRACTOR SHALL CLEAN & REFLURISH ALL EXISTING DUCTWORK. PATCH & REPAIR OPENING AIR TIGHT OF EXISTING DUCTWORK AS REQUIRED (TYPICAL ALL). FIELD VERIFY AND COORDINATE ALL EXISTING HVAC SIZES, LOCATIONS, AND CONDITION PRIOR TO BID.
6. REUSE AND REWORK EXISTING HVAC DUCTWORK. PROVIDE NEW SECTION FOR RECONNECTION AS REQUIRED. FIELD VERIFY ALL REQUIREMENTS PRIOR TO BID.
7. CONTRACTOR SHALL BALANCE, INSPECT, REPAIR, OR REPLACE AS NECESSARY IF REQUIRED FOR EXISTING CEILING MOUNTED AIR DEVICES TO REMAIN. FIELD VERIFY AND COORDINATE EXACT SIZE, AIR QUANTITY, LOCATION, AND CONDITION PRIOR TO BID. AIR FLOW SHALL REMAIN AS IS UNLESS NOTED ON PLAN, OR DIRECTED BY CONSTRUCTION MANAGER. ANY DEFICIENCIES AND OR DISCREPANCIES SHALL BE REPORTED TO ARCHITECT/ENGINEER IMMEDIATELY. COORDINATE AIR BALANCE RESULTS WITH CONSTRUCTION MANAGER.

NOTE:
ALL NEW HOODS SHALL BE RATED WITH ONE INCH THICK LAYER OF FACTORY INSTALLED INSULATION TO MEET "ZERO INCH" CLEARANCE" TO COMBUSTIBLE MATERIALS. HOOD SHALL BE CERTIFIED BY ETL SPECIFICATIONS, AND SHALL CONFORM TO UL STANDARD 710, BUILT PER NFPA 96 SECTION 4.2.2, AND NSF LISTED.

NOTE: IF BALANCING DAMPERS ARE NOT EXISTING IN THE BRANCH DUCT OR AT THE TAKE-OFF, MECHANICAL CONTRACTOR SHALL SUPPLY AND INSTALL NEW BALANCING DAMPERS WITHIN THE BRANCH DUCT (TYPICAL).



I MECHANICAL FLOOR PLAN
1/4" = 1'-0"

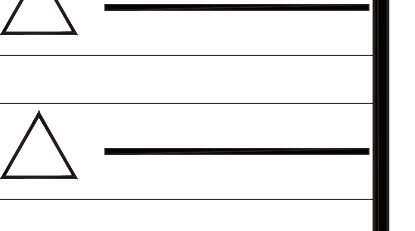


Chick-fil-A

5200 Buffington Rd.
Atlanta Georgia,
30349-2998

Revisions:
Mark Date By
3 10/28/21 JR
PLAYGROUND

REMOVAL



SEAL

GEORGIA REGISTERED
No. PE039277
PROFESSIONAL
ENGINEER
STACY TREVOR HENSON

INTERPLAN
INTERPLAN LLC
AR0011595
CA 8640
ARCHITECTURE
ENGINEERING
PERMITTING
220 E. CENTRAL PKWY, STE 4000
ALPHARETTA, GA 30201
407.645.5008

STORE
WAYCROSS
FSU #2053
S06E

2256 MEMORIAL DR
WAYCROSS, GA
31501

SHEET TITLE
MECHANICAL
FLOOR PLAN

VERSION:
ISSUE DATE:

Job No. : 20.0856
Store : 2053
Date : 10.2021
Drawn By : CH
Checked By : DAK

Sheet

MI