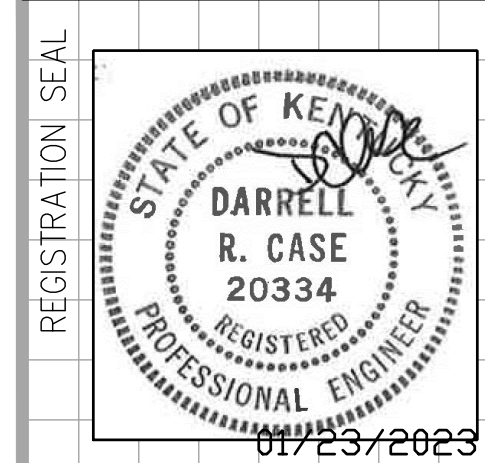


1 MECHANICAL PLAN  
SCALE: 1/4" = 1'-0"

MECHANICAL SYMBOLS LEGEND	
(T)	THERMOSTAT
-W-	FLEXIBLE DUCT
[Symbol]	VOLUME DAMPER
FD [Symbol]	FIRE DAMPER
[Symbol]	CEILING SUPPLY AIR DIFFUSER
[Symbol]	CEILING RETURN AIR GRILLE
[Symbol]	SIDEWALL AIR DIFFUSER OR GRILLE
[Symbol]	NEW DUCTWORK
[Symbol]	EXISTING DUCTWORK
CD	CONDENSATE DRAIN
G	GAS PIPING
[Symbol]	PIPE TURNING DOWN
[Symbol]	PIPE TURNING UP
[Symbol]	BALL VALVE
[Symbol]	GATE VALVE
[Symbol]	CONNECTION OF NEW TO EXISTING
[Symbol]	CHECK VALVE
[Symbol]	GAS COCK
[Symbol]	UNION
[Symbol]	PRESSURE GAUGE
[Symbol]	STRAINER
AFF	ABOVE FINISHED FLOOR
S1	AIR DEVICE # S - SUPPLY
CFM	R - RETURN
[Symbol]	E - EXHAUST
[Symbol]	TURNING VANES



**CASE**  
Engineering Inc.  
706 Main Court  
St. Louis, MO 63026  
T: 636.349.1600  
F: 636.349.1730  
CERTIFICATE OF AUTHORITY NO. 4738

Gamestop

FLORENCE SQUARE  
7723 MALL ROAD  
FLORENCE, KENTUCKY 41042  
STORE #1623

EXISTING ROOFTOP UNIT SCHEDULE															
MARK	MFR	MODEL NO.	TONS	CFM	O.A. CFM	ESP	BHP	COOLING		ELECTRIC HEAT (KW)	ELECTRICAL		SEER/EER	WEIGHT (LBS)	REMARKS
								TTL/SEN			MCA/MOCP	V/PH			
XRTU-1	CARRIER	50TC-D12	10.0	4000	550	-	-	132.3/77.3	33.0	-	460/3	-/-	EXISTING	1	

1. EXISTING RTU TO REMAIN. PROVIDE MANUFACTURER'S RECOMMENDED MAINTENANCE, INCLUDING BUT NOT LIMITED TO CLEANING EVAPORATOR AND CONDENSER COILS, CHECK REFRIGERANT CHARGE, ADD REFRIGERANT, AS REQUIRED, ADJUST AND/OR REPLACE BELTS. REPLACE ALL FILTERS.

AIR DEVICE SCHEDULE							
PLAN MARK	MANUFACTURER	MODEL	MATL.	NECK SIZE	FRAME TYPE	PANEL SIZE	REMARKS
S1	TITUS	OMNI	ST	SCHED	LAY-IN	24"x24"	1,2
S2	TITUS	OMNI	ST	SCHED	FLANGED	12"x12"	1,2
R1	TITUS	PAR	ST	22"x22"	LAY-IN	24"x24"	2
TR	TITUS	PAR	ST	SCHED	LAY-IN	24"x24"	2

1. BRANCH DUCT SAME DIAMETER AS GRILLE NECK SIZE.  
2. TO BE PAINTED AS NOTED ON ARCH SHEETS.

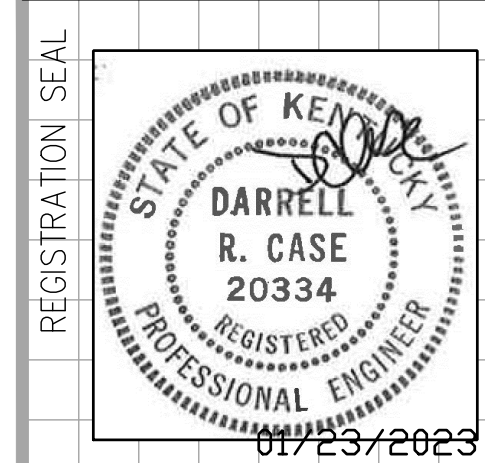
DIFFUSER NECK SIZE SCHEDULE	
NECK SIZE	CFM
6"	0 - 100
8"	110 - 250
10"	260 - 400
12"	410 - 600
14"	610 - 1000
16"	1010 - 1400

- MECHANICAL KEYED NOTES**
- PROVIDE RTU 7-DAY PROGRAMMABLE THERMOSTAT AND RELATED WIRING. MOUNT 48" A.F.F. PROVIDE LOCKABLE COVER.
  - PROVIDE WALL MOUNTED REMOTE ZONE TEMPERATURE SENSOR AT 48" AFF, AND WIRED BACK TO RESPECTIVE THERMOSTAT. COORDINATE PLACEMENT WITH WALL DECOR AND EQUIPMENT. FIELD VERIFY WITH THE OWNER'S REPRESENTATIVE FOR THE FINAL LOCATION PRIOR TO INSTALLATION.
  - PROVIDE GALVANIZED STEEL DUCTWORK, SIZES AS NOTED ON DRAWINGS. DUCTWORK SIZES ARE SHEET METAL SIZES. DUCTWORK TO BE INSULATED WITH A MINIMUM OF R-8 INSULATION.
  - EXISTING ROOFTOP UNIT (XRTU-1), TO REMAIN, VERIFY EXACT LOCATION IN FIELD, CONDENSATE DRAIN TO REMAIN. PROVIDE NEW GALVANIZED SHEET METAL DUCT DUCT DROPS FULL SIZE OF RTU CONNECTIONS, TRANSITION TO DUCT SIZES SHOWN, PROVIDE TURNING VALVES AT THE ELBOWS.
  - MAXIMUM FIVE (5) FEET OF FLEXIBLE DUCT. FLEX DUCT SHALL NOT BE USED IN LIEU OF RIGID ELBOWS OR FITTINGS.
  - EXISTING EXHAUST FAN TO REMAIN (XEF-1), CLEAN TO LIKE NEW CONDITION AND REBALANCE TO 75 CFM.

REV	DATE	DESCRIPTION

PROJECT NO.: 220859  
DRAWN BY: CC  
CHECKED BY: NW  
ISSUE DATE: 01/25/23  
**MECHANICAL PLAN**

**M1.0**



**CASE**  
Engineering Inc.  
706 Marie Court  
St. Louis, MO 63026  
T: 636.349.1600  
F: 636.349.1730  
CERTIFICATE OF AUTHORITY NO. 4738

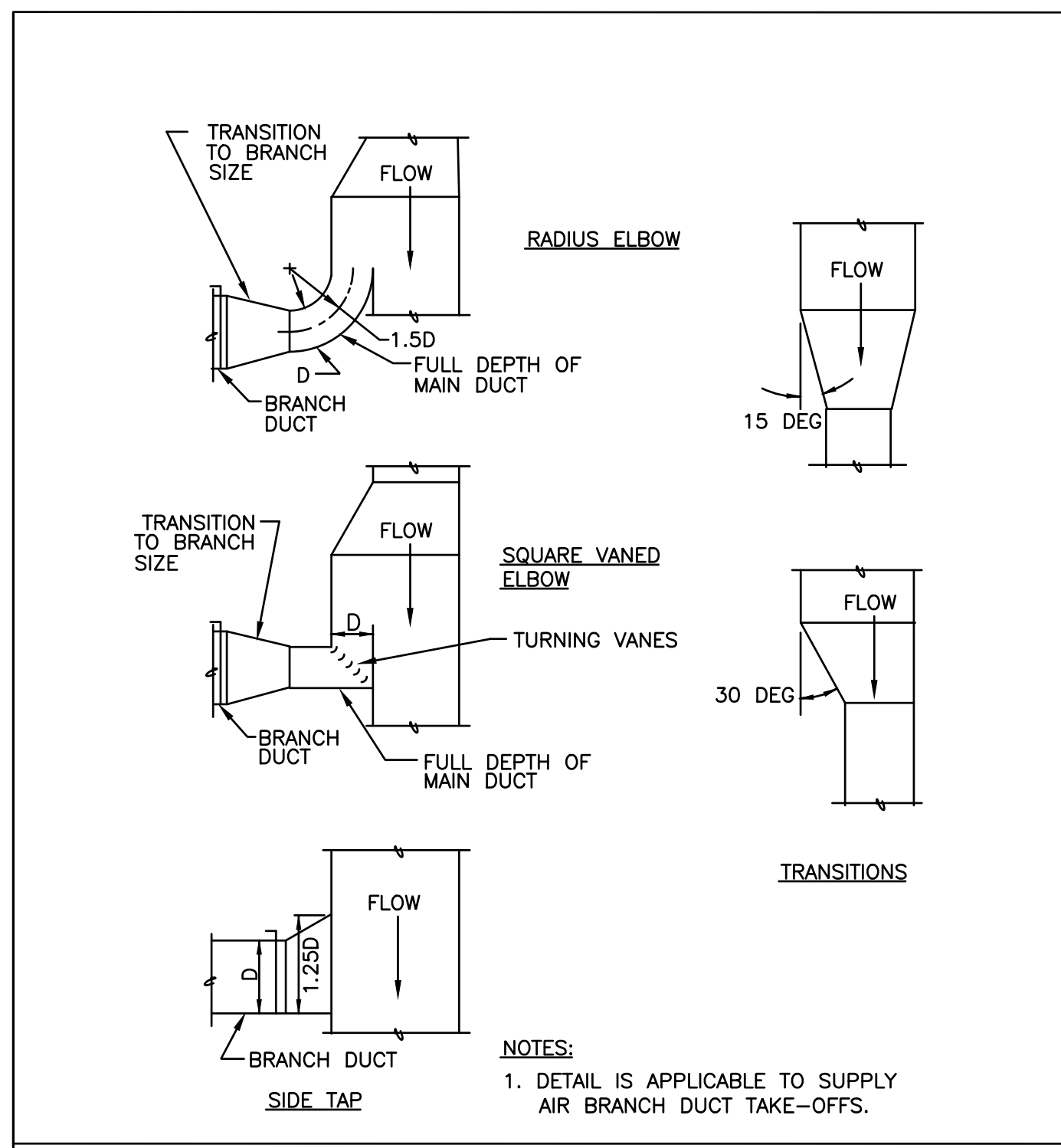
**Gamestop**

FLORENCE SQUARE  
7723 MALL ROAD  
FLORENCE, KENTUCKY 41042  
STORE #1623

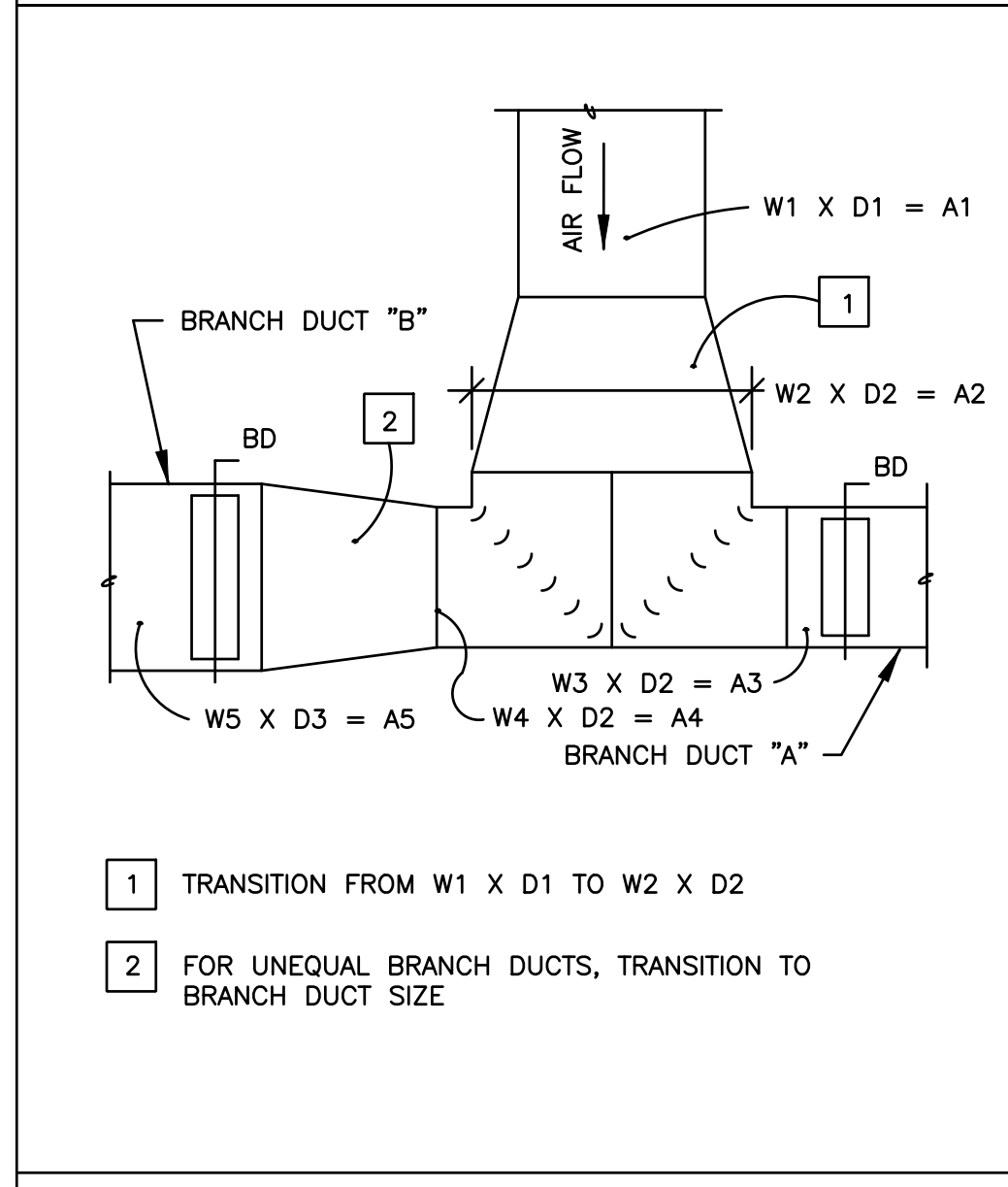
REV	DATE	DESCRIPTION	NAME

PROJECT NO: 220859  
DRAWN BY: CC  
CHECKED BY: NW  
ISSUE DATE: 01/25/23  
MECHANICAL DETAILS

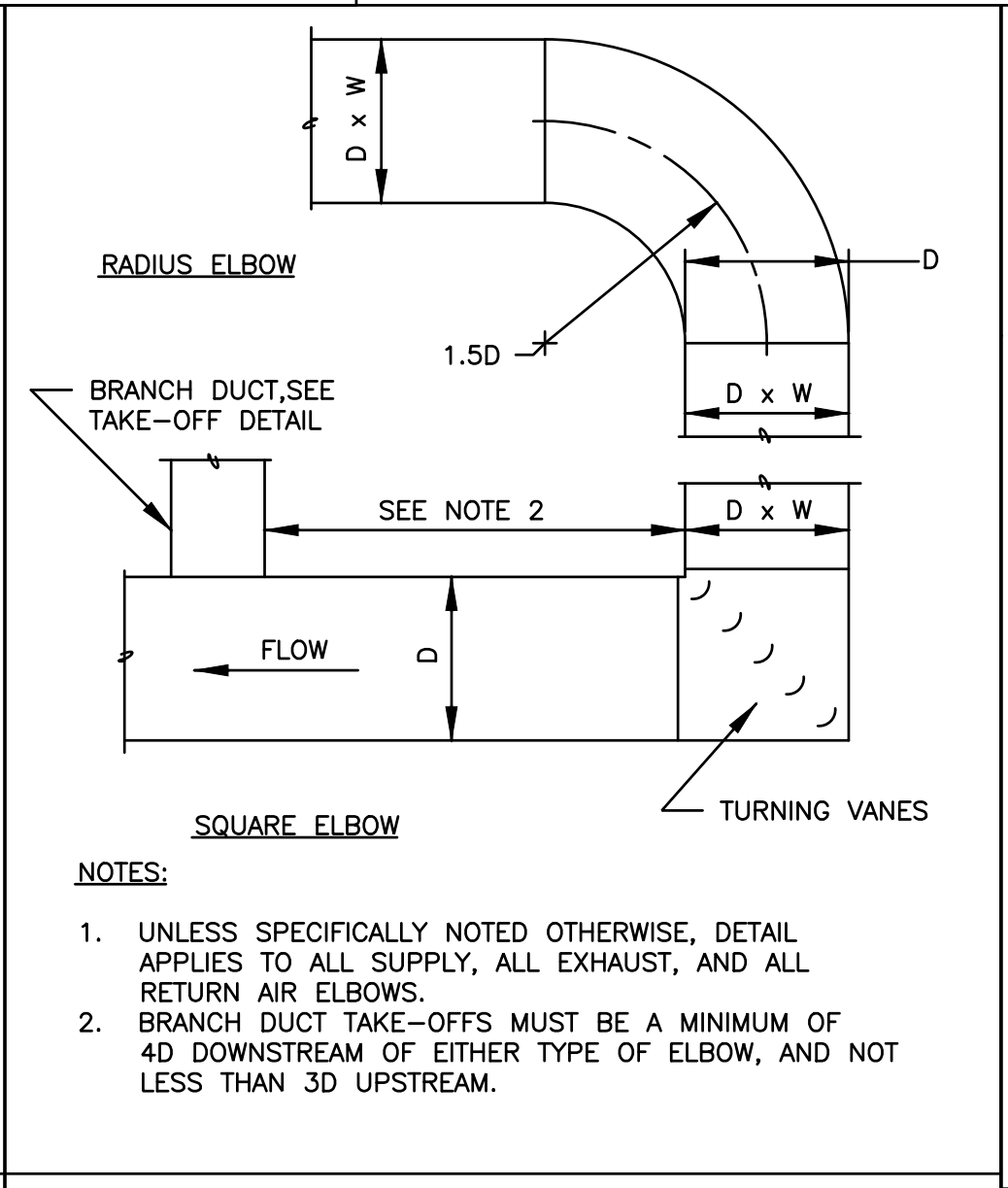
**M2.0**



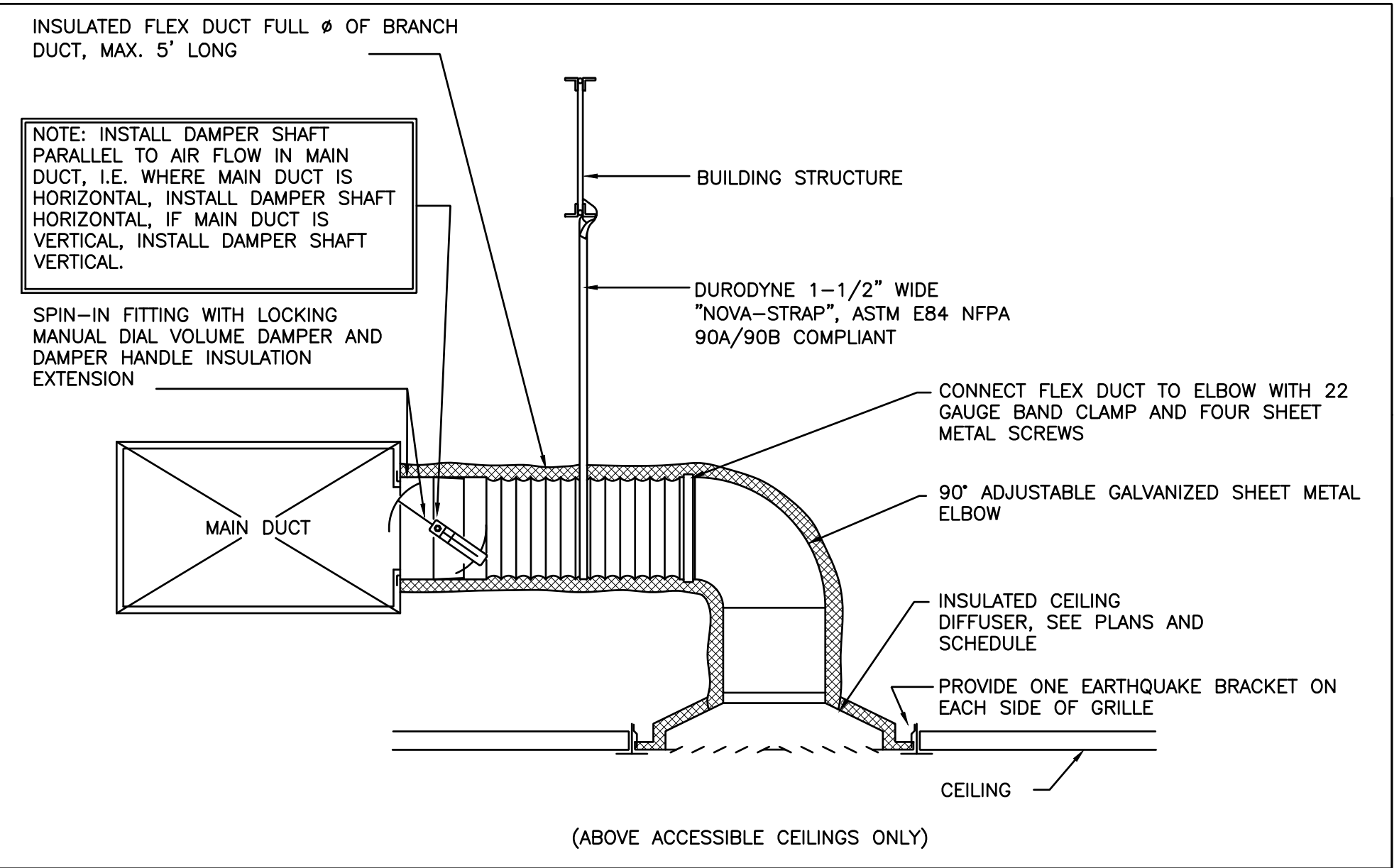
**BRANCH DUCT TAKEOFFS AND TRANSITIONS**  
NO SCALE



**DUCT TEE FITTING**  
NO SCALE



**DUCT ELBOW**  
NO SCALE

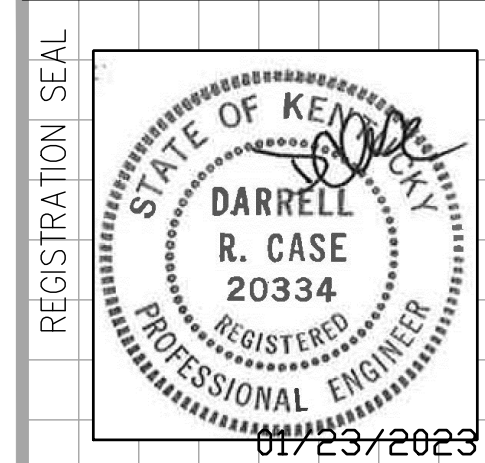


**BRANCH DUCT - AIR GRILLE DETAIL**  
NO SCALE

MECHANICAL SPECIFICATIONS

1. **GENERAL**
  - A. THE GENERAL CONDITIONS OF THE GENERAL SPECIFICATIONS, AND ALL APPLICABLE INSTRUCTIONS TO BIDDERS SHALL BE PART OF THESE SPECIFICATIONS.
  - B. "PROVIDE" AS USED HEREIN MEANS TO FURNISH AND INSTALL COMPLETE.
  - C. "FURNISH" AS USED HEREIN MEANS TO PURCHASE AND DELIVER TO THE PROJECT SITE IN UNDAMAGED CONDITION, WHERE APPLICABLE, SUBMIT FOR APPROVAL AND APPROVE AND COORDINATE WITH THE CONTRACT DOCUMENTS.
  - D. "INSTALL" AS USED HEREIN MEANS TO STORE AND PROTECT FROM DAMAGE, INSTALL PER MANUFACTURER'S WRITTEN INSTRUCTIONS, AND MAKE ALL CONNECTIONS COMPLETE.
  - E. THE TERM "CONTRACTOR" AS USED HEREIN MEANS ANY CONTRACTOR OR SUBCONTRACTOR CONTRACTED TO PERFORM WORK INCLUDED IN AND DEFINED BY THIS SECTION.
  - F. MECHANICAL WORK SHALL BE PROVIDED IN STRICT COMPLIANCE WITH THE 2012 INTERNATIONAL MECHANICAL CODE, AND ALL APPLICABLE LOCAL ORDINANCES, STATE LAWS AND FEDERAL LAWS.
2. **PRIOR TO BIDDING:**
  - A. THOROUGHLY REVIEW THE BID INSTRUCTIONS INCLUDING ALL CIVIL, ARCHITECTURAL, STRUCTURAL, AND MEPFF CONSTRUCTION DOCUMENTS. IDENTIFY AND REVIEW THE MANUFACTURERS' WRITTEN INSTALLATION INSTRUCTIONS, DETAILS, AND REQUIREMENTS FOR THE SCHEDULED AND SPECIFIED EQUIPMENT AND MATERIALS. FOR AMBIGUOUS, CONTRADICTORY, OR CONFLICTING ITEMS WITHIN THE CONSTRUCTION DOCUMENTS, THE CONTRACTOR SHALL REQUEST CLARIFICATION IN A WRITTEN "REQUEST FOR INFORMATION" (RFI), AT LEAST FIVE (5) WORKING DAYS PRIOR TO BID DATE. RFI-RELATED WORK NOT CLARIFIED PRIOR TO BID SHALL BE PROVIDED PER THE ARCHITECT (ENGINEER) IN STRICT ACCORDANCE WITH THE MOST STRINGENT MATERIALS, EQUIPMENT, AND SCOPE OF WORK.
  - B. EXISTING CONDITIONS: THE CONTRACT DOCUMENTS ARE BASED ON INFORMATION PROVIDED TO CASE ENGINEERING AT THE TIME OF DESIGN. THIS CONTRACTOR SHALL VERIFY ALL EXISTING CONDITIONS INCLUDING BUT NOT LIMITED TO: EXISTING HVAC SYSTEM LOCATIONS, EXISTING DUCT AND PIPING LAYOUTS, CLEARANCES, ETC. REPORT IN WRITING ANY DISCREPANCIES TO THE ARCHITECT (ENGINEER) AT LEAST FIVE (5) BUSINESS DAYS PRIOR TO BID. DISCREPANCIES NOT CLARIFIED PRIOR TO BID SHALL BE PROVIDED PER THE ARCHITECT (ENGINEER) IN STRICT ACCORDANCE WITH THE MOST STRINGENT MATERIALS, EQUIPMENT, AND SCOPE OF WORK.
  - C. IF THE CONTRACTOR BELIEVES THE DRAWINGS AND SPECIFICATIONS CONFLICT WITH CODE REQUIREMENTS, IMMEDIATELY NOTIFY THE ARCHITECT (ENGINEER) IN WRITING.
  - D. NO ALLOWANCES WILL BE MADE DUE TO CONTRACTOR'S UNFAMILIARITY WITH THE CONSTRUCTION DOCUMENTS OR FOR THE FAILURE OF THE CONTRACTOR TO OBTAIN CLARIFICATIONS PRIOR TO BID.
  - E. VISIT THE JOB SITE AND THOROUGHLY INVESTIGATE CONDITIONS. THE LACK OF SPECIFIC INFORMATION ON THE DRAWINGS SHALL NOT RELIEVE THE CONTRACTOR OF ANY RESPONSIBILITY.
  - F. REFER TO APPLICABLE CODES CITED IN CONSTRUCTION DOCUMENTS, EXAMINE GOVERNING STATE AND LOCAL CODES, AND LOCAL REGULATIONS AND ORDINANCES, AND PROVIDE ALL EQUIPMENT AND INSTALLATION IN STRICT ACCORDANCE WITH SAME.
  - G. REFER TO CONSTRUCTION DOCUMENTS FOR SCHEDULED AND SPECIFIED MATERIALS AND EQUIPMENT. INSTALLATION SHALL BE IN STRICT ACCORDANCE WITH MANUFACTURERS' WRITTEN INSTRUCTIONS AND DETAILS.
  - H. ALL WORK SHALL BE COMPLETED IN STRICT ACCORDANCE WITH THE LANDLORD'S CONSTRUCTION CRITERIA AND AGREEMENT. THIS CONTRACTOR SHALL EXAMINE THE LANDLORD CRITERIA AND TENANT/LANDLORD AGREEMENT AND THEY SHALL BE PART OF THESE SPECIFICATIONS. NO ALLOWANCES WILL BE MADE DUE TO CONTRACTOR'S UNFAMILIARITY WITH THESE DOCUMENTS.
3. **BIDDING**
  - A. SUBMISSION OF A BID ACKNOWLEDGES THAT THE CONTRACTOR HAS RECEIVED THE BID INSTRUCTIONS, HAS VISITED THE SITE, EXAMINED ALL CONSTRUCTION DOCUMENTS, AND AGREES TO ALL ITEMS AND CONDITIONS WITHIN THE CONSTRUCTION DOCUMENTS. THE CONTRACTOR'S BID SHALL INCLUDE ALL MECHANICAL WORK IN THE CONSTRUCTION DOCUMENTS, INCLUDING MECHANICAL WORK RELATED TO EQUIPMENT FURNISHED/PROVIDED BY OTHERS.
4. **PERMITS**
  - A. SECURE AND PAY FOR ALL PERMITS, LICENSES, AND INSPECTIONS REQUIRED BY THE AHJ FOR THIS WORK.
5. **SUBSTITUTIONS**
  - A. MANUFACTURERS' EQUIPMENT, APPLIANCES, AND MATERIALS SCHEDULED, NOTED, AND SPECIFIED IN THE CONSTRUCTION DOCUMENTS ARE THE DESIGN STANDARD. NO SUBSTITUTIONS WILL BE ALLOWED WITHOUT PRIOR WRITTEN APPROVAL BY THE ARCHITECT OR ENGINEER. IN BIDDING, CONTRACTOR SHALL NOT ASSUME ACCEPTANCE OF SUBSTITUTIONS. CONTRACTOR MUST STATE IN SUBSTITUTION REQUEST: "PROPOSED SUBSTITUTIONS ARE OF EQUAL OR HIGHER QUALITY, EFFICIENCY AND DURABILITY WHEN COMPARED TO THE SPECIFIED EQUIPMENT AND MATERIAL. CONTRACTOR ASSUMES FULL RESPONSIBILITY FOR ADDITIONAL ENGINEERING COSTS AND COSTS TO OTHER CONTRACTORS DUE TO SUBSTITUTIONS." IF DEEMED NECESSARY BY THE ARCHITECT OR ENGINEER, SUBSTITUTIONS WHICH ARE NOT APPROVED OR NOT EQUAL TO DESIGN STANDARD SHALL BE REMOVED AND THE SCHEDULED, NOTED, AND SPECIFIED EQUIPMENT AND MATERIALS SHALL BE INSTALLED AT CONTRACTOR'S EXPENSE.
6. **SCHEDULING**
  - A. ALL PERFORMANCE OF CONSTRUCTION SHALL BE AS REQUIRED BY THE PACE OF THE GENERAL CONSTRUCTION, AS SCHEDULED BY THE GC. PROVIDE COMPLETE INFORMATION AND FULL COOPERATION WITH OTHER CONTRACTORS AND TRADES, AS REQUIRED FOR THE TIMELY COMPLETION AND COORDINATION OF THE COMPLETE PROJECT.
  - B. PROVIDE ALL TESTS AND INSPECTIONS REQUIRED BY AHJ.
  - C. PROVIDE A SIGNED CERTIFICATE OF INSPECTION AT THE PROJECT COMPLETION.
7. **SCOPE**
  - A. PROVIDE PERMIT(S), INSPECTIONS, FINAL CERTIFICATE(S) OF INSPECTION BY AHJ, PERMIT AND INSPECTION FEES, AND ALL MATERIALS, EQUIPMENT, RIGGING, AND LABOR NECESSARY FOR A COMPLETE AND FULLY OPERATING HVAC SYSTEM.
  - B. STRUCTURAL ENGINEERING FOR THE SUPPORT AND MOUNTING OF THE SCHEDULED AND SPECIFIED MATERIALS AND EQUIPMENT IS THE RESPONSIBILITY OF OTHERS. THE MECHANICAL CONSTRUCTION DOCUMENTS DO NOT INCLUDE STRUCTURAL ENGINEERING FOR SUPPORT OF MECHANICAL EQUIPMENT, APPLIANCES, OR SYSTEMS.
  - C. THROUGHOUT CONSTRUCTION, THIS CONTRACTOR'S WORK SHALL INCLUDE ONGOING COORDINATION OF THIS WORK WITH THE CONSTRUCTION DOCUMENTS, THE WORK OF ALL OTHER TRADES, AND WITH UTILITY SERVICE(S) AND UTILITY CONNECTION(S). FOR AMBIGUOUS, CONTRADICTORY, OR CONFLICTING ITEMS WITHIN THE CONSTRUCTION DOCUMENTS, INCLUDING BUT NOT LIMITED TO THE ACTUAL UTILITY SERVICE AND CONNECTION REQUIREMENTS, THE CONTRACTOR SHALL REQUEST CLARIFICATION IN WRITTEN "REQUEST FOR INFORMATION" (RFI). RFI SHALL BE ISSUED WITHOUT DELAY AND PRIOR TO PROCEEDING WITH ANY RFI-SUBJECT WORK. RFI NOT CLARIFIED PRIOR TO BID SHALL BE PROVIDED PER THE ARCHITECT (ENGINEER) IN STRICT ACCORDANCE WITH THE MOST STRINGENT MATERIALS, EQUIPMENT, AND SCOPE OF WORK, AT NO ADDITIONAL COST TO THE OWNER.
  - D. PROVIDE HOISTING FOR ALL MATERIALS AND EQUIPMENT FURNISHED AND/OR INSTALLED, IN ACCORDANCE WITH ALL CITY, STATE AND FEDERAL RULES AND REGULATIONS.
  - E. INSTALL ALL WORK AND EQUIPMENT RIGID, DEAD LEVEL, PLUMB, AND TRUE-TO-LINE, UNLESS NOTED OTHERWISE. SUPPORT AND MOUNTING OF EQUIPMENT, DUCT, PIPING, ETC., ARE THIS CONTRACTOR'S MEANS AND METHODS. THE CONTRACTOR SHALL UNDERSTAND THE SPECIFIED AND SCHEDULED EQUIPMENT AND MATERIALS AND MEANS AND METHODS OF INSTALLATION. THIS CONTRACTOR SHALL PROVIDE ALL ACCESSORIES REQUIRED FOR PROPER SUPPORT WHETHER SHOWN ON THE DRAWINGS OR NOT. IF SUPPORTS ARE REQUIRED, CONTRACTOR SHALL SUBMIT DRAWINGS TO THE ARCHITECT FOR APPROVAL.
  - F. PROVIDE ACCESSORY MOUNTING HARDWARE INCLUDING BUT NOT LIMITED TO STRUCTURAL STEEL, STRUT SYSTEMS, ALL THREAD RODS, AND BRACES, AS REQUIRED TO MOUNT EQUIPMENT. PROVIDE STEEL SHAPES AND FRAMES TO SUPPORT EQUIPMENT WHERE NEEDED. ALL SYSTEMS SHALL BE SUPPORTED INDEPENDENT OF AND ISOLATED FROM EQUIPMENT VIBRATION.
  - G. PRODUCTS SHALL BE INSTALLED IN ACCORDANCE WITH MANUFACTURERS' PRINTED INSTALLATION AND MAINTENANCE LITERATURE. COMPONENTS REQUIRING PERIODIC MAINTENANCE OR ADJUSTMENTS SHALL BE INSTALLED AS TO PERMIT ACCESS WITHOUT DAMAGE TO STRUCTURE, FINISHES, OR OTHER EQUIPMENT.
  - H. PROVIDE ALL LABOR, EQUIPMENT AND MATERIAL REQUIRED FOR THE REINSTALLATION AND RE-SUPPORT OF EXISTING SERVICES (DUCTWORK, ELECTRICAL CONDUIT, PIPING, EXISTING EQUIPMENT, ETC.) DISTURBED BY THE INSTALLATION OF NEW WORK UNDER THIS CONTRACT, INCLUDING THE WORK OF OTHER TRADES.
  - I. DEMOLITION: REFER TO THE ARCHITECTURAL DRAWINGS FOR THE GENERAL SCOPE OF DEMOLITION. THIS CONTRACTOR SHALL DISCONNECT AND CAREFULLY REMOVE ALL EXISTING HVAC EQUIPMENT LOCATED IN DEMOLISHED AREAS INCLUDING FLOOR, PLENUMS, CEILING, WALLS, AND FLOORS. U.N.O., DISCONNECT AND REMOVE EXISTING HVAC SYSTEMS COMPLETE, INCLUDING EQUIPMENT, CURBS, DUCTS, INSULATION, AIR DEVICES, AND PIPING LOCATED IN THESE AREAS. ALL HVAC SYSTEM COMPONENTS INCLUDING AIR TERMINAL UNITS, FANS, MOTORS, CONTROL DEVICES AND SENSORS, DAMPERS, ACTUATORS, HANGERS, RESTRAINTS, MOUNTING HARDWARE, ETC., SHALL BE REMOVED AND LEGALLY DISPOSED OF BY THIS CONTRACTOR.
  - J. UNLESS NOTED OTHERWISE, ABANDONMENT IN PLACE (AIP) IS NOT ACCEPTABLE. UNUSED EQUIPMENT, DUCT, PIPING, AND OTHER COMPONENTS WITHIN OR SERVING THIS SPACE MUST BE COMPLETELY REMOVED TO POINT OF ORIGIN. ENDS OF SYSTEMS BEYOND GENERAL SCOPE OF DEMOLITION MAY BE ABANDONED ONLY WITH WRITTEN APPROVAL OF ARCHITECT (ENGINEER). WHERE THESE ABANDONED ENDS TERMINATE, TRIM CLEANLY AND PROPERLY CAP OR SEAL IN AN APPROVED MANNER, LEAVING TERMINATION SAFE AND SECURE BEHIND NEW FINISHES. MAINTAIN SYSTEM CONTINUITY TO HVAC SYSTEMS SERVING AREAS BEYOND GENERAL DEMOLITION, AS NEEDED. THIS INCLUDES BUT IS NOT LIMITED TO REMOVAL, MODIFICATION AND/OR REINSTALLATION OF EQUIPMENT, AS NEEDED. COMPLETION OF THIS PROJECT SHALL INCLUDE RETURNING THESE ADJACENT AREAS TO FULLY FUNCTIONING OPERATION.
  - K. CONTRACTOR SHALL PROVIDE DAILY CLEAN-UP, REMOVAL AND LEGAL DISPOSAL OF ALL RUBBISH GENERATED BY THIS WORK.
  - L. AS-BUILT DRAWINGS: DURING CONSTRUCTION,
8. **CODE REQUIREMENTS**
  - A. ALL WORK SHALL COMPLY WITH THE CONSTRUCTION DOCUMENTS OR, AS DIRECTED BY THE ARCHITECT (ENGINEER), AND SHALL BE PERFORMED IN STRICT ACCORDANCE WITH ALL APPLICABLE CODES, ORDINANCES, AND REGULATIONS OF THE AHJ, WHETHER SO SHOWN OR NOT. CONTRACTOR SHALL BE FAMILIAR WITH PROVISIONS OF ALL APPLICABLE CODES AND SHALL ENSURE THE WORK COMPLIES WITH ALL LOCAL, STATE AND FEDERAL CODES, TRADE STANDARDS AND ORDINANCES. THE HIGHEST STANDARD IF CONTRACTOR BELIEVES THE DRAWINGS AND/OR SPECIFICATIONS CONFLICT WITH CODE REQUIREMENTS, IMMEDIATELY NOTIFY THE G.C. CONTRACTOR SHALL NOT INSTALL WORK NOT COMPLYING WITH CODE REQUIREMENTS. IN CASE OF CONFLICT BETWEEN THE CONSTRUCTION DOCUMENTS AND THE CODES AND ORDINANCES, THE HIGHEST STANDARD SHALL APPLY, AS A MINIMUM STANDARD. CONTRACTOR SHALL SATISFY CODE REQUIREMENTS. ALL MODIFICATIONS REQUIRED BY AHJ SHALL BE MADE BY THE CONTRACTOR AT NO ADDITIONAL COST TO THE OWNER. BEFORE COMMENCING WORK NOT SHOWN IN DOCUMENTS BUT REQUIRED TO ACHIEVE FULL COMPLIANCE WITH CODES, CONTRACTOR SHALL NOTIFY ARCHITECT (ENGINEER).
9. **CUTTING & PATCHING**
  - A. CORE-DRILL OR SAW-CUT EXISTING FLOORS, WALLS, ROOF, ETC. AS REQUIRED FOR EQUIPMENT, PIPE, OR DUCTWORK. PRIOR TO CUTTING, PERFORM NON-DESTRUCTIVE TESTING TO VERIFY LOCATION OF PIPING, CONDUIT, AND STRUCTURAL COMPONENTS. NOTIFY ARCHITECT (ENGINEER) OF ANY DISCREPANCIES. PATCH SURROUNDING AREAS FLUSH WITH ADJACENT SURFACE AND READY TO RECEIVE FINISH. PATCH AND REPAIR ROOF TO MATCH EXISTING ROOFING. ALL ROOF WORK SHALL MEET WARRANTY REQUIREMENTS OF EXISTING ROOFING. COORDINATE REQUIRED OPENINGS AND PENETRATIONS WITH THE GC AND OTHER TRADES. (OPENINGS IN FOUNDATIONS, FLOORS, WALLS, CEILING, AND ROOF SHALL BE BUILT INTO THE STRUCTURE WITH SLEEVES, CURBS, ETC.)
10. **FIRE STOPPING**
  - A. PROVIDE FIRE STOPPING FOR PENETRATIONS OF DUCT, PIPING, AND OTHER MECHANICAL EQUIPMENT THROUGH FIRE-RATED VERTICAL BARRIERS (WALLS AND PARTITIONS), HORIZONTAL BARRIERS (FLOOR/CEILING ASSEMBLIES), AND VERTICAL SERVICE SHAFT WALLS AND PARTITIONS. (WHERE THIS WORK IS BEING PERFORMED UNDER A GC, PRIOR TO INSTALLATION, THIS CONTRACTOR SHALL COORDINATE FIRESTOPPING WITH GC). FIRESTOP SYSTEM INSTALLATION MUST MEET REQUIREMENTS OF ASTM E 814 OR UL 1479 TESTED ASSEMBLIES THAT PROVIDE A FIRE RATING EQUAL TO OR GREATER THAN THAT OF CONSTRUCTION BEING PENETRATED. INSTALL IN STRICT ACCORDANCE WITH UL FIRE RESISTANCE DIRECTORY, AHJ, AND MANUFACTURER'S SPECIFIED REQUIREMENTS. ONLY TESTED FIRESTOP SYSTEMS WITH "3M", "HILTI", OR EQUAL SHALL BE USED. REFER TO ARCHITECTURAL DRAWINGS FOR ASSEMBLY RATING.
11. **MATERIALS AND WORKMANSHIP**
  - A. ALL MANUFACTURED ARTICLES, MATERIALS, AND EQUIPMENT SHALL BE NEW U.N.O., FREE OF DEFECTS, AND INSTALLED IN STRICT ACCORDANCE WITH THE MANUFACTURER'S WRITTEN INSTRUCTIONS AND DETAILS, AND INDEPENDENTLY TESTED AND LABELED BY A NATIONALLY RECOGNIZED TESTING LABORATORY UNDERWRITERS LABORATORY (UL) OR INTERTEK (ETL). ALL LIKE MATERIALS USED SHALL BE OF THE SAME MANUFACTURE AND QUALITY U.N.O.
  - B. ALL MATERIALS WITHIN PLENUMS SHALL BE NONCOMBUSTIBLE OR SHALL HAVE A FLAME SPREAD INDEX OF NOT MORE THAN 25 AND A SMOKE DEVELOPED INDEX OF NOT MORE THAN 50 WHEN TESTED IN ACCORDANCE WITH ASTM E84 OR UL 723. ALL MATERIALS INSTALLED IN PLENUM SPACES SHALL BE LISTED AND LABELED FOR SUCH APPLICATION.
  - C. ALL WORK SHALL BE SUPERVISED BY THE INSTALLING CONTRACTOR'S COMPETENT AND SKILLED FOREMAN. ALL WORK SHALL BE PERFORMED BY COMPETENT AND SKILLED
12. **WORKERS** WITH ALL TRADE AND MANUFACTURER REQUIRED TRAINING, AND EXECUTED IN A NEAT AND WORKMANLIKE MANNER. ALL WORK SHALL BE IN STRICT ACCORDANCE WITH THE BEST QUALITY STANDARDS OF THE TRADE AND IN CONFORMANCE WITH ALL FEDERAL, STATE, AND LOCAL CODES AND STANDARDS, INCLUDING APPLICABLE OSHA REGULATIONS. PROPERLY PROTECT WORK DURING CONSTRUCTION AND AT CONSTRUCTION COMPLETION, THOROUGHLY CLEAN WORK AND REMOVE ALL DEBRIS FROM THE PREMISES.
13. **PROTECTION OF WORK AND PROPERTY**
  - A. PROTECT ALL WORK FROM DAMAGE AND PROTECT THE OWNER'S PROPERTY FROM DIRT, DAMAGE, OR LOSS ARISING FROM CONTRACTOR WORK.
  - B. COMPLY WITH OSHA REQUIREMENTS AND TAKE ALL NECESSARY PRECAUTIONS FOR EMPLOYEE SAFETY.
  - C. PROTECT ALL OPEN PIPING, DUCT, AND EQUIPMENT, EXISTING AND NEW FROM CONSTRUCTION DIRT AND DUST. COVER, CAP, OR PLUG OPEN ENDS OF PIPING AND DUCT. KEEP EQUIPMENT CLOSED OR COVER AND SEAL EQUIPMENT OPENINGS. ANY MECHANICAL SYSTEMS, NEW AND/OR EXISTING OPERATED DURING CONSTRUCTION SHALL BE PROTECTED BY COVERING EACH RETURN AIR DUCT OPENING WITH MERV 8 FILTERS AND INSTALLING MERV 8 FILTER(S) IN EQUIPMENT FILTER RACK. PRIOR TO TESTING AND BALANCING, REMOVE FILTERS FROM FILTER RACKS AND INSTALL NEW MERV 8 FILTERS.
  - D. AT COMPLETION OF WORK, PRIOR TO EQUIPMENT START-UP, REMOVE COVERS, CAPS, OR PLUGS ON DUCT AND PIPING.
14. **DAMAGE BY LEAKS**
  - A. THIS CONTRACTOR IS SOLELY RESPONSIBLE FOR ALL DAMAGES TO THE PROPERTY (FOUNDATIONS, WALKS, ROADS, BUILDING COMPONENTS, FINISHES, PIPING SYSTEMS, ELECTRICAL SYSTEMS, HVAC SYSTEMS, AND THEIR EQUIPMENT AND CONTENT) CAUSED BY LEAKS IN THE SYSTEMS BEING INSTALLED OR HAVING BEEN INSTALLED AS PART OF THIS WORK. ALL REPAIRS WILL BE MADE AT THIS CONTRACTOR'S EXPENSE.
15. **DRAWINGS AND SPECIFICATIONS**
  - A. DRAWINGS ARE DIAGRAMMATIC AND INTENDED TO SHOW GENERAL LOCATIONS OF DUCTS, PIPES, AND EQUIPMENT AND THE METHODS OF CONNECTING AND CONTROLLING. THE DRAWINGS SHALL BE FOLLOWED AS CLOSELY AS ACTUAL BUILDING CONDITIONS AND THE WORK OF OTHER TRADES PERMIT. THE DRAWINGS ARE NOT INTENDED TO SHOW EVERY CONNECTION IN DETAIL OR ALL OFFSETS, TRANSITIONS, OR FITTINGS REQUIRED FOR A COMPLETE SYSTEM NOR IS IT IMPLIED THAT ALL CONFLICTS BETWEEN BUILDING ELEMENTS AND/OR OTHER TRADES ARE INDICATED. DO NOT SCALE DRAWINGS. EXAMINE FIELD CONDITIONS AND SEE ARCHITECTURAL AND STRUCTURAL DRAWINGS FOR EXACT LOCATION OF DOORS, WINDOWS, LIGHTS, ETC.
  - B. THE DRAWINGS AND SPECIFICATIONS ARE MUTUALLY COMPLEMENTARY, AND ANY WORK REQUIRED BY ONE BUT NOT BY THE OTHER SHALL BE REQUIRED BY BOTH.
  - C. PRIOR TO INSTALLING EQUIPMENT, DUCT, OR PIPE COORDINATE PROPOSED LOCATIONS WITH EACH TRADE/DISCIPLINE AND GC. EXAMINE EACH DISCIPLINE'S DRAWINGS FOR CONSTRUCTION DETAILS, CEILING HEIGHTS, REQUIRED CLEARANCES, AND SPACE CONSTRAINTS. PROVIDE SYSTEMS INSTALLATION BASED ON THIS EXAMINATION AND COORDINATION. IMMEDIATELY REPORT INSTALLATION CONFLICTS IN WRITING TO THE GC. RESOLVE ALL CONFLICTS WITH GC AND OTHER TRADES PRIOR TO PROCEEDING.
  - D. THE CONTRACTOR IS FULLY RESPONSIBLE FOR CORRECT INTERPRETATION AND APPLICATION OF ALL SIZES AND DIMENSIONS.
  - E. SIGNIFICANT DEVIATIONS OR CHANGES FROM THE DRAWINGS, WHICH ARE REQUIRED TO ACCOMPLISH THE INTENT OF THE CONTRACT DOCUMENTS MUST BE REVIEWED AND APPROVED BY THE ARCHITECT (ENGINEER) BEFORE PROCEEDING. IF THE CONTRACTOR BELIEVES CHANGES TO THE CONTRACT DRAWINGS ARE NECESSARY, SHOP DRAWINGS WITH WRITTEN DESCRIPTIONS OF THE PROPOSED CHANGES SHALL BE SUBMITTED TO THE ARCHITECT (ENGINEER) FOR APPROVAL.
  - F. ALL PIPE, DUCTS, VENTS, ETC., EXTENDING THROUGH WALLS AND ROOF SHALL BE FLASHED WATERPROOF. PROVIDE ALL FLASHING FOR PIPE AND DUCTWORK PENETRATING BUILDING ENVELOPE. PROVIDE DUCT AND/OR PIPE SLEEVES AT WALL PENETRATIONS. SEAL ANNULAR SPACE WEATHER TIGHT.
16. **CONTROLS**
  - A. PROVIDE COMPLETE EQUIPMENT CONTROLS, INCLUDING OF ALL COMPONENTS, VOLTAGES, PROGRAMMING, WIRING ETC. FOR COMPLETE AND OPERATIONAL SYSTEMS. MOUNT THERMOSTATS AND SWITCHES 4'-0" ABOVE FINISHED FLOOR. MOUNT OTHER SENSORS (HUMIDITY, CO2, CO, NO2, ETC.) PER MANUFACTURER'S IOM. PRIOR TO MOUNTING, COORDINATE THERMOSTAT LOCATION(S) WITH FINAL FIXTURES AND EQUIPMENT. DO NOT MOUNT THERMOSTATS IN DIRECT SUNLIGHT, IN DISCHARGE OF SUPPLY GRILLE(S), NEAR HEAT PRODUCING APPLIANCES OR EQUIPMENT, ON WALLS WITH INTERNAL HEAT SOURCES (DUCT OR PIPING), OR ON EXTERIOR WALLS. IF EXTERIOR WALL MOUNTING IS NECESSARY, PROVIDE INSULATED MOUNTING BASE, WHERE THERMOSTAT LOCATION IS SUBJECT TO DAMAGE, PROVIDE LOCKABLE HIGH-IMPACT GUARD.
17. **PIPING**
  - A. IF FINISHED AREAS, ALL PIPING SHALL BE CONCEALED UNLESS NOTED OTHERWISE.
  - B. SEE PIPE SCHEDULE FOR PIPE MATERIALS AND PIPE INSULATION.
  - C. DO NOT INSTALL PVC PIPING IN PLENUM
18. **DUCT MOUNTED SMOKE DETECTORS**
  - A. DUCT MOUNTED SMOKE DETECTORS SHALL BE PROVIDED BY E.C. AND UPON DETECTING SMOKE, SHALL SHUT DOWN PROTECTED AIR SYSTEM.
19. **SHOP DRAWINGS**
  - A. SUBMIT SHOP DRAWINGS ON SCHEDULED AND NOTED EQUIPMENT AND MATERIALS. PRIOR TO SUBMITTAL, EACH SHOP DRAWING SHALL BE REVIEWED BY THE CONTRACTOR TO ASSURE THAT THE PROPOSED EQUIPMENT IS CLEARLY MARKED, HIGHLIGHTED, AND NOTED. ALL DIMENSIONS, QUANTITIES, CONNECTIONS, AND ACCESSORIES SHALL BE CLEARLY SHOWN IN CONFORMANCE WITH THE CONTRACT DOCUMENTS, AND SHALL BE MARKED OR STAMPED TO CORRELATE WITH THE WORK WAS MADE AND COMPLIANCE WAS CONFIRMED. SHOP DRAWING SUBMITTED WITHOUT BEING MARKED, HIGHLIGHTED, AND NOTED WILL BE REJECTED WITHOUT REPLY.
  - B. PROVIDE ADEQUATE TIME FOR SUBMITTAL REVIEW AND CORRECTIONS. IF ANY, TO PREVENT CONSTRUCTION DELAY. DO NOT PERFORM ANY PORTION OF WORK WHICH REQUIRES REVIEW AND APPROVAL UNTIL THE RESPECTIVE SUBMITTALS HAVE BEEN APPROVED BY THE ENGINEER.
  - C. REVIEW OF SHOP DRAWINGS BY THE OWNER, OWNER'S AGENT, ARCHITECT, OR ENGINEER IS NOT GENERAL COMPLIANCE WITH THE CONTRACT DOCUMENTS. THE CONTRACTOR IS SOLELY RESPONSIBLE FOR COMPLYING WITH ALL TERMS OF THE CONTRACT DOCUMENTS AND FOR PERFORMANCE OF ALL EQUIPMENT AND MATERIALS PURCHASED, FOR QUANTITIES, PROPER FIT, AND OTHER DIMENSIONAL REQUIREMENTS.
20. **DUCTWORK**
  - A. REFER TO KEYED NOTES FOR CLARIFICATION OF DUCT DIMENSIONS. PROVIDE ALL DUCTWORK IN STRICT ACCORDANCE WITH THE SHEET METAL AND AIR CONDITIONING CONTRACTORS NATIONAL ASSOCIATION (SMACNA) "HVAC DUCT CONSTRUCTION STANDARDS - METAL AND FLEXIBLE", LATEST EDITION. U.N.O. ALL RIGID DUCTWORK SHALL BE GALVANIZED SHEET METAL. ALL EXPOSED DUCTWORK SHALL HAVE A MILD-PRIMERIZED FINISH FOR PAINT ADHESION. EXPOSED ROUND DUCT SHALL BE SPIRAL SEAM TYPE, NO FIBERGLASS DUCTBOARD WILL BE ALLOWED.
  - B. PROVIDE TURNING VANES AT ALL CHANGES IN DIRECTION.
  - C. UNLESS NOTED OTHERWISE, EACH DUCTED AIR DEVICE SHALL BE PROVIDED WITH A VOLUME DAMPER, WHETHER SHOWN ON THE PLANS OR NOT. PROVIDE A VOLUME DAMPER AT EACH BRANCH DUCT SERVING AN AIR DEVICE AND/OR AS SHOWN, DETAILED, AND SPECIFIED. WHERE A DUCT MOUNTED VOLUME DAMPER WOULD BE INACCESSIBLE, PROVIDE A VOLUME DAMPER IN THE AIR DEVICE GRILLE NECK OR A DAMPER WITH REMOTE CABLE CONTROL. PROVIDE EACH ROUND BRANCH DUCT TAKE-OFF FROM MAIN DUCT WITH SPIN-IN FITTING AND VOLUME BALANCING DAMPER. VOLUME DAMPERS SHALL BE YOUNG REGULATOR MODEL 5020R LOCKING QUADRANT VOLUME DAMPER WITH 2" HANDLE STANDOFF FOR INSULATION THICKNESS. WHERE BRANCH TAKE-OFF IS IN DIRECT SUNLIGHT, AIR BALANCING, PROVIDE BALANCING DAMPER IN GRILLE NECK OR BOWDEN "270-275" REMOTE CABLE CONTROL.
  - D. ALL FLEXIBLE DUCT SHALL BE THERMAFLEX TYPE MKE, MAXIMUM 7'-0" LONG. FLEXDUCT SHALL BE INSTALLED IN ACCESSIBLE CONCEALED SPACES ONLY, FULLY STRETCHED OUT AND WITHOUT SAGS OR KINKS. CONNECTIONS TO FITTINGS AND AIR DEVICES SHALL BE MADE WITH TWO (2) BAND CLAMPS. BAND CLAMP THE INNER LINER TIGHT TO FITTING OR AIR DEVICE, THEN THE INSULATION
21. **DUCT SEALING**
  - A. IN CONDITIONED AREAS, SEAL ALL LONGITUDINAL AND TRANSVERSE JOINTS WITH A NON-HARDENING, NON-MIGRATING MASTIC OR LIQUID ELASTIC SEALANT, WITH VOC CONTENT NO GREATER THAN 250G/L, AND RECOMMENDED BY THE MANUFACTURER FOR SEALING SHEET METAL DUCT. SEAL ALL JOINTS, SPIN-IN FITTINGS, AND FASTENING SCREWS WITH MASTIC. BACK-SYSTEM LEAKAGE SHALL NOT EXCEED 5% OF DESIGN FLOW. DUCT TAPE IS NOT ALLOWED.
22. **DUCT INSULATION**
  - A. SEE KEYED NOTES FOR DUCT INSULATION.
23. **EQUIPMENT**
  - A. INSTALL ALL EQUIPMENT AND MATERIALS IN STRICT ACCORDANCE WITH MANUFACTURER'S INSTALLATION AND OPERATIONS MANUAL AND IN STRICT ACCORDANCE WITH ALL LOCAL CODES AND REGULATIONS.
  - B. U.N.O. PROVIDE ALL MOTORIZED EQUIPMENT WITH VIBRATION ISOLATION MOUNTING AND FLEXIBLE DUCT AND FLEXIBLE PIPE CONNECTIONS.
  - C. LABEL ALL EQUIPMENT WITH ID TAGS. LETTERING SHALL BE 1" HIGH BLACK ON WHITE BACKGROUND. ID TAGS IN PLENUM SPACES SHALL BE PLENUM RATED. EQUIPMENT NOT TERMINATING IN A PLENUM SHALL BE LABELED WITH ENGRAVED PHENOLIC RESIN NAMEPLATES ADHERED TO UNIT CABINET WITH RTV SILICONE. LETTERING SHALL BE 1" HIGH BLACK ON WHITE BACKGROUND.
  - D. ALL EQUIPMENT, DUCT, PIPE, ETC. MOUNTED FROM BOLTED CONNECTIONS SHALL HAVE DOUBLE NUTS AT ATTACHMENT TO STRUCTURE AND HANGER, NO EXCEPTIONS.
24. **FIRE AND FIRE-SMOKE DAMPERS**
  - A. PROVIDE FIRE DAMPERS AND/OR FIRE SMOKE DAMPERS AT DUCT PENETRATIONS OF RATED ASSEMBLIES AND AS REQUIRED BY AHJ. REFER TO ARCHITECTURAL DRAWINGS FOR ASSEMBLY RATINGS. INSTALL DAMPERS IN STRICT ACCORDANCE WITH MANUFACTURER'S DETAILS AND MAINTAIN MANUFACTURER'S DETAILS ONSITE FOR AHJ REVIEW. PROVIDE ACCESS PANELS OF ADEQUATE SIZE TO FACILITATE SERVICE ACCESS OF DAMPERS IN LEVEL OF ACCESS PANELS. A REMOVABLE DUCT SECTION IS ACCEPTABLE.
25. **OUTDOOR AIR INTAKES**
  - A. PROVIDE A MINIMUM 10'-0" HORIZONTAL CLEARANCE BETWEEN MECHANICAL EQUIPMENT OUTDOOR AIR INTAKES AND EXHAUST FAN DISCHARGES. COORDINATE WITH PLUMBING VENTS, AND ANY OTHER HAZARDOUS OR NOXIOUS CONTAMINANT.
26. **AIR FILTERS**
  - A. PROVIDE THREE (3) SETS OF NEW MERV 13 DISPOSABLE AIR FILTERS, PER THE FOLLOWING: FOR HVAC SYSTEMS, PROVIDE FILTERS IN CONSTRUCTION, PROVIDE FILTERS IN EQUIPMENT AND ON RETURN AIR DUCT OPENINGS TO PROTECT DUCT FROM DIRT; IN HVAC EQUIPMENT PRIOR TO AIR TESTING, ADJUSTING, AND BALANCING; AND AT PROJECT COMPLETION - ONE (1) SPARE SET FOR HVAC EQUIPMENT.
27. **SEISMIC RESTRAINT**
  - A. PROVIDE SEISMIC RESTRAINT OF SYSTEMS AND EQUIPMENT IN STRICT ACCORDANCE WITH THE BUILDING CODE. SUBMIT ALL REQUIRED DETAILS TO AHJ FOR REVIEW AND APPROVAL. IF REQUIRED BY AHJ, PROVIDE ENGINEERED SEISMIC-RESTRAINT DRAWINGS, SIGNED AND SEALED BY A PROFESSIONAL ENGINEER, LICENSED IN THE STATE. SUBMIT COPIES INCLUDING CALCULATIONS AND DETAILS, AS REQUIRED BY AHJ TO ARCHITECT (ENGINEER) AND TO AHJ FOR REVIEW AND APPROVAL.
28. **COMPLETION OF WORK**
  - A. UPON COMPLETION OF WORK, INSPECT INSTALLATION OF ALL EQUIPMENT AND SYSTEMS. OPEN ALL ACCESS COVERS ON EQUIPMENT. REMOVE ALL SURPLUS MATERIALS AND DEBRIS AND PROPERLY DISPOSE OF SAME.
29. **TESTING, ADJUSTING, & BALANCING**
  - A. PRIOR TO EQUIPMENT START-UP, REMOVE COVERS, CAPS, OR PLUGS ON DUCT AND PIPING.
  - B. UPON COMPLETION OF WORK, MC SHALL PROVIDE HVAC TESTING:
    - i. AFTER INSTALLING EQUIPMENT AND AFTER ELECTRICAL CIRCUITRY HAS BEEN ENERGIZED, TEST UNITS FOR COMPLIANCE WITH REQUIREMENTS.
    - ii. INSPECT FOR AND REMOVE SHIPPING BOLTS, BLOCKS, AND TIED DOWN STRAPS.
    - iii. OPERATIONAL TEST: AFTER ELECTRICAL CIRCUITRY HAS BEEN ENERGIZED, START UNITS TO CONFIRM PROPER MOTOR ROTATION, BELT TENSION, DAMPER OPERATION, COOLING FUNCTION, HEATING FUNCTION, AND UNIT OPERATION.
    - iv. TEST AND ADJUST CONTROLS AND SAFETIES. REPLACE DAMAGED AND MALFUNCTIONING CONTROLS AND EQUIPMENT.
    - v. REMOVE AND REPLACE MALFUNCTIONING CONTROLS AND SAFETIES AND RETEST AS ABOVE.
    - vi. SUBMIT TESTING REPORT TO ARCHITECT
30. **CLOSEOUT - AT CONSTRUCTION COMPLETION AND PRIOR TO TURNOVER TO OWNER (TENANT):**
  - A. PROVIDE FINAL MARK-UPS IN PDF (DWG) FORMAT TO ARCHITECT AND ENGINEER.
  - B. PROVIDE A SIGNED CERTIFICATE OF INSPECTION AT THE PROJECT COMPLETION.
  - C. PROVIDE THE OWNER WITH A BOUND OWNER'S MANUAL. THE MANUAL SHALL CONSIST OF A THREE-RING LOOSE-LEAF BINDER CONTAINING ALL PRINTED MATERIAL FOR INSTALLED EQUIPMENT INCLUDING BUT NOT LIMITED TO: WARRANTY INFORMATION, SERVICE AND CLEANING INSTRUCTIONS, NOTICES TO OWNER, OPERATING SIGNALS, AND MAINTENANCE INSTRUCTIONS.
  - D. TRAIN THE OWNER IN THE THERMOSTATS FUNCTIONS AND OPERATING THE EQUIPMENT USING THE THERMOSTATS. CONTRACTOR SHALL PROGRAM THE THERMOSTATS PER THE OWNER'S TIME SCHEDULES AND SETPOINTS.
31. **WARRANTY**
  - A. ON ALL WORK INCLUDED IN THIS CONTRACT, PROVIDE ONE (1) YEAR UNCONDITIONAL WRITTEN WARRANTY FOR LABOR, EQUIPMENT, AND MATERIALS TO REPLACE ALL FAULTY MATERIALS AND/OR LABOR, AT NO COST TO OWNER, BEGINNING ON DATE OF ACCEPTANCE BY OWNER.
  - B. WITHIN THE WARRANTY PERIOD, DURING THE OPPOSITE SEASON (HEATING/COOLING) FROM THAT IN WHICH THE INITIAL ADJUSTMENTS WERE MADE, THIS CONTRACTOR SHALL MAKE AN INSPECTION OF THE INSTALLED BUILDING SYSTEMS. AT THIS INSPECTION, HIGH SYSTEMS OPERATING. THIS CONTRACTOR SHALL MAKE ANY NECESSARY MODIFICATIONS TO THE INITIAL ADJUSTMENTS REQUIRED TO PRODUCE OPTIMUM OPERATION OF THE SYSTEM COMPONENTS, TO PRODUCE THE PROPER CONDITIONS IN EACH SPACE.

--- END OF SPECIFICATIONS ---



**CASE**  
Engineering Inc.  
706 Main Court  
St. Louis, MO 63026  
T: 636.349.1600  
F: 636.349.1750  
CERTIFICATE OF AUTHORITY NO. 4738

**Gameston**  
FLORENCE SQUARE  
7723 WALL ROAD  
FLORENCE, KENTUCKY 41042  
STORE #1623

REV#	DATE	DESCRIPTION	NAME
PROJECT NO. 220859			
DRAWN BY: CC			
CHECKED BY: WY			
ISSUE DATE:	01/25/23		

M3.0