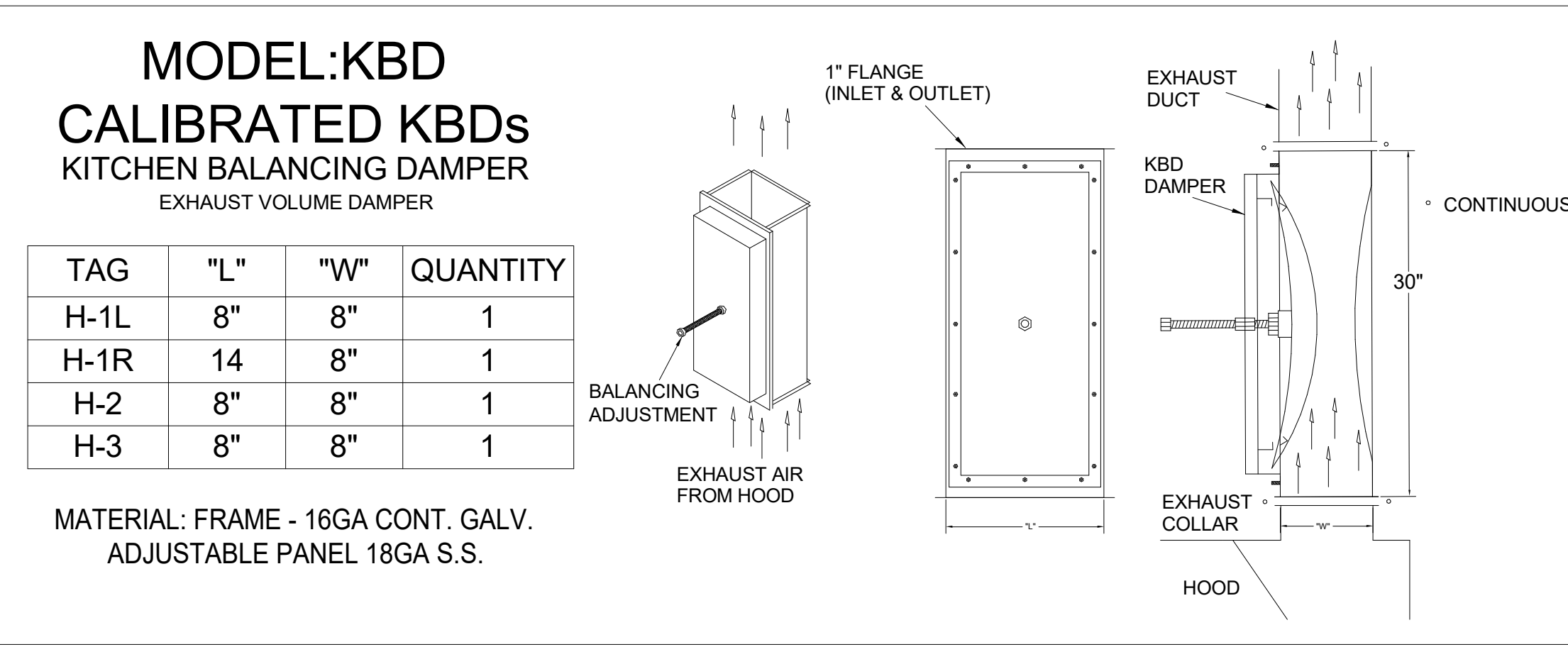
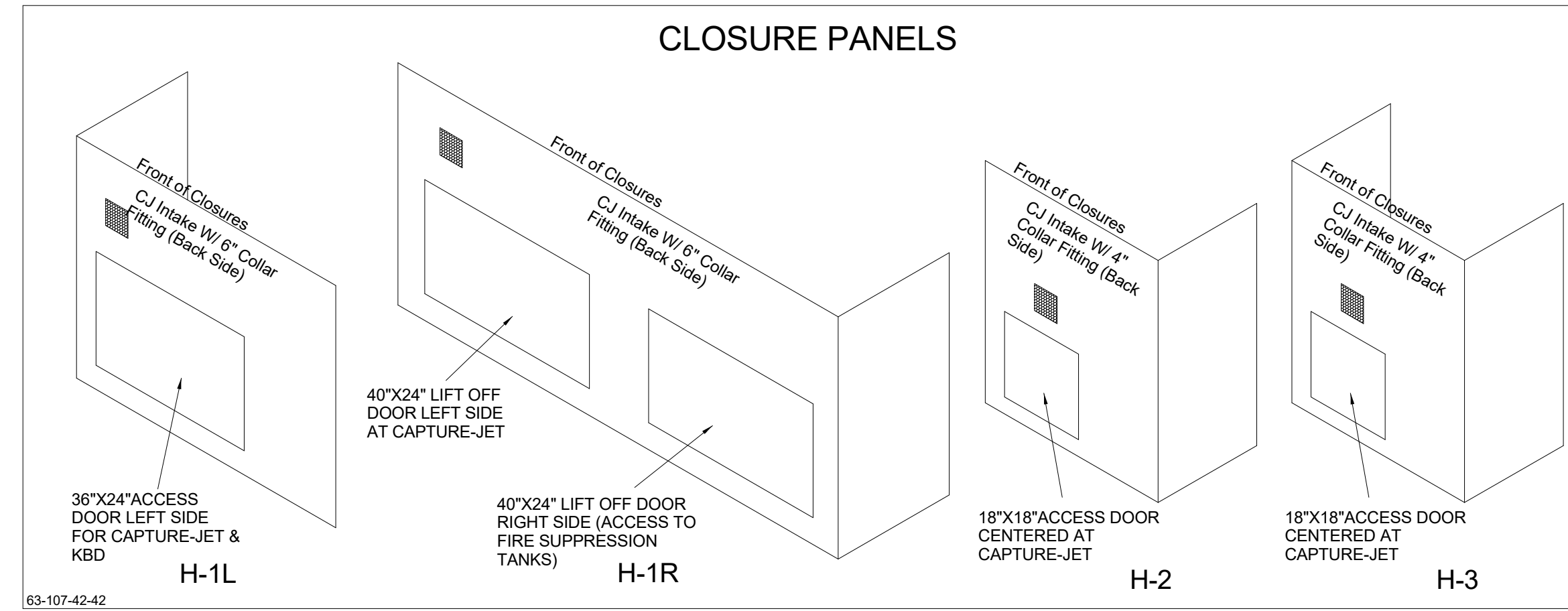


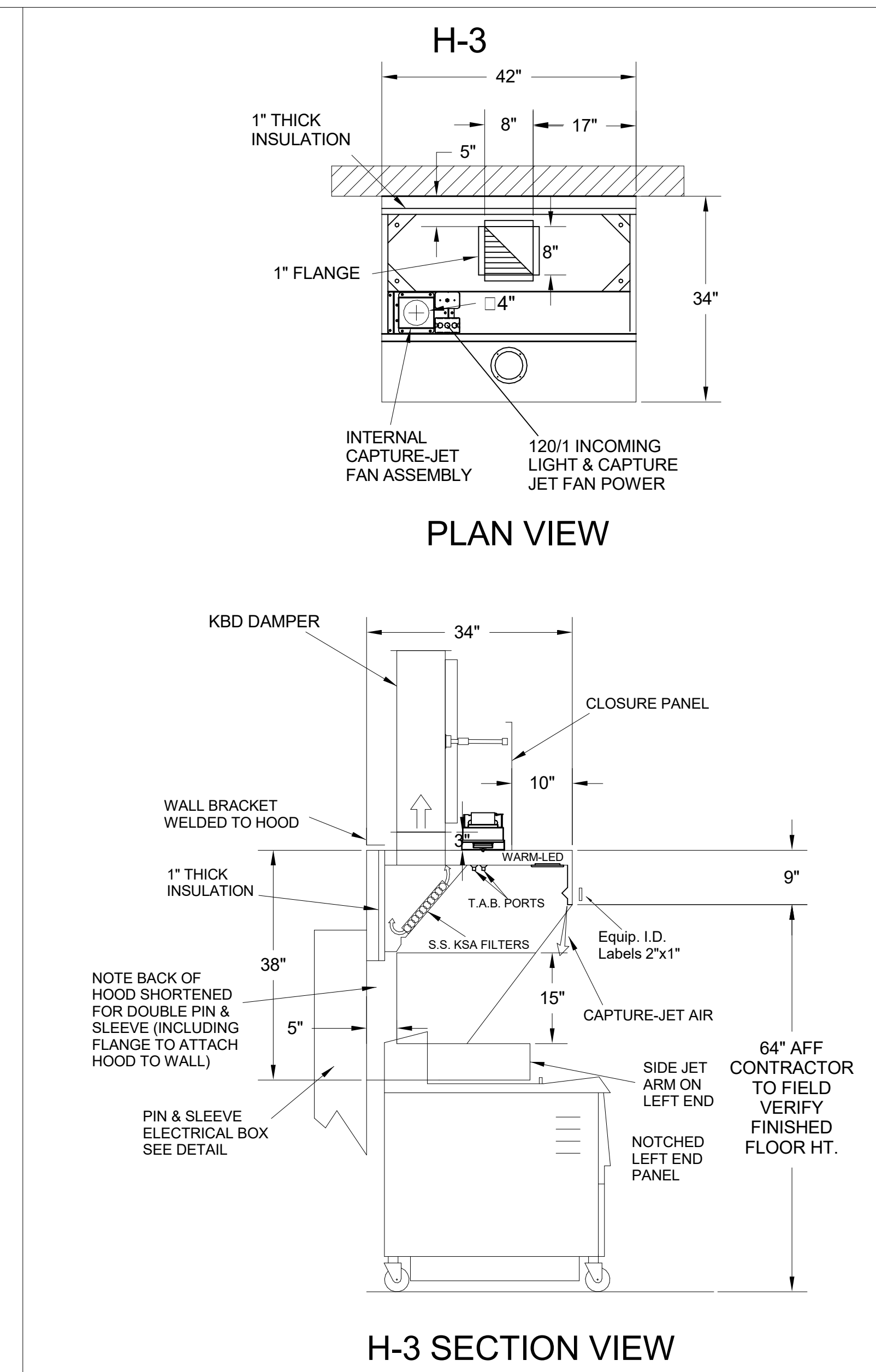
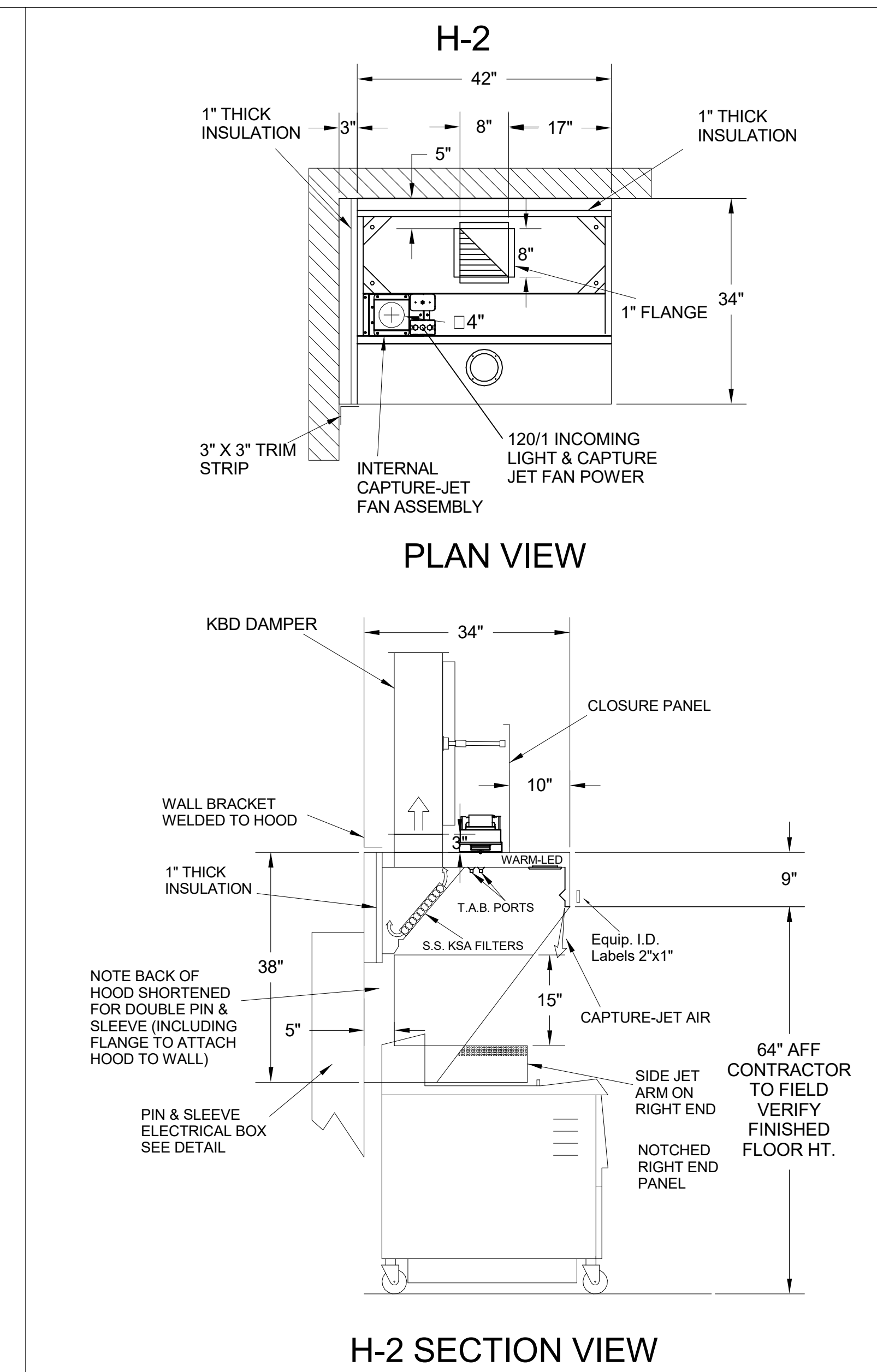
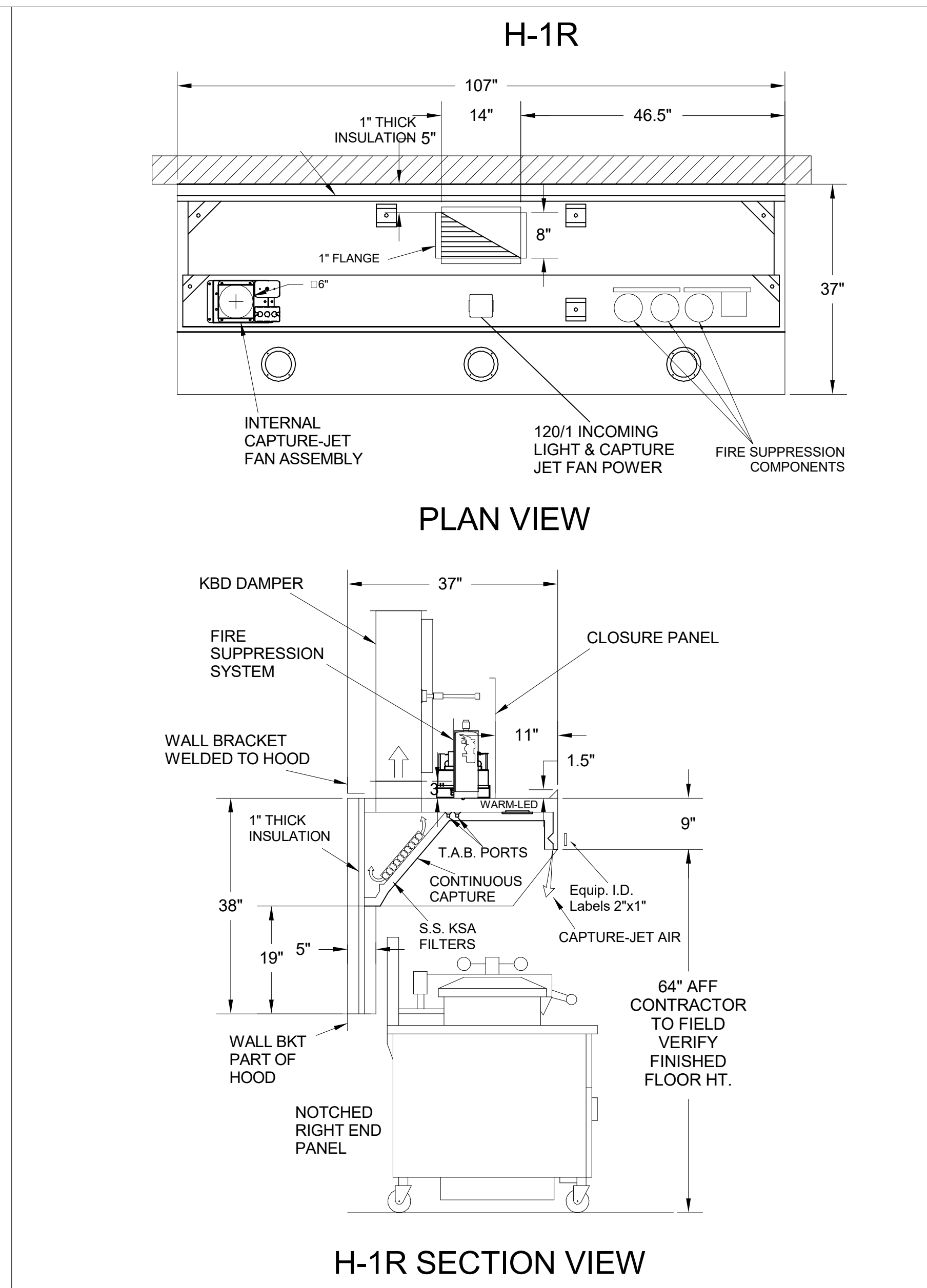
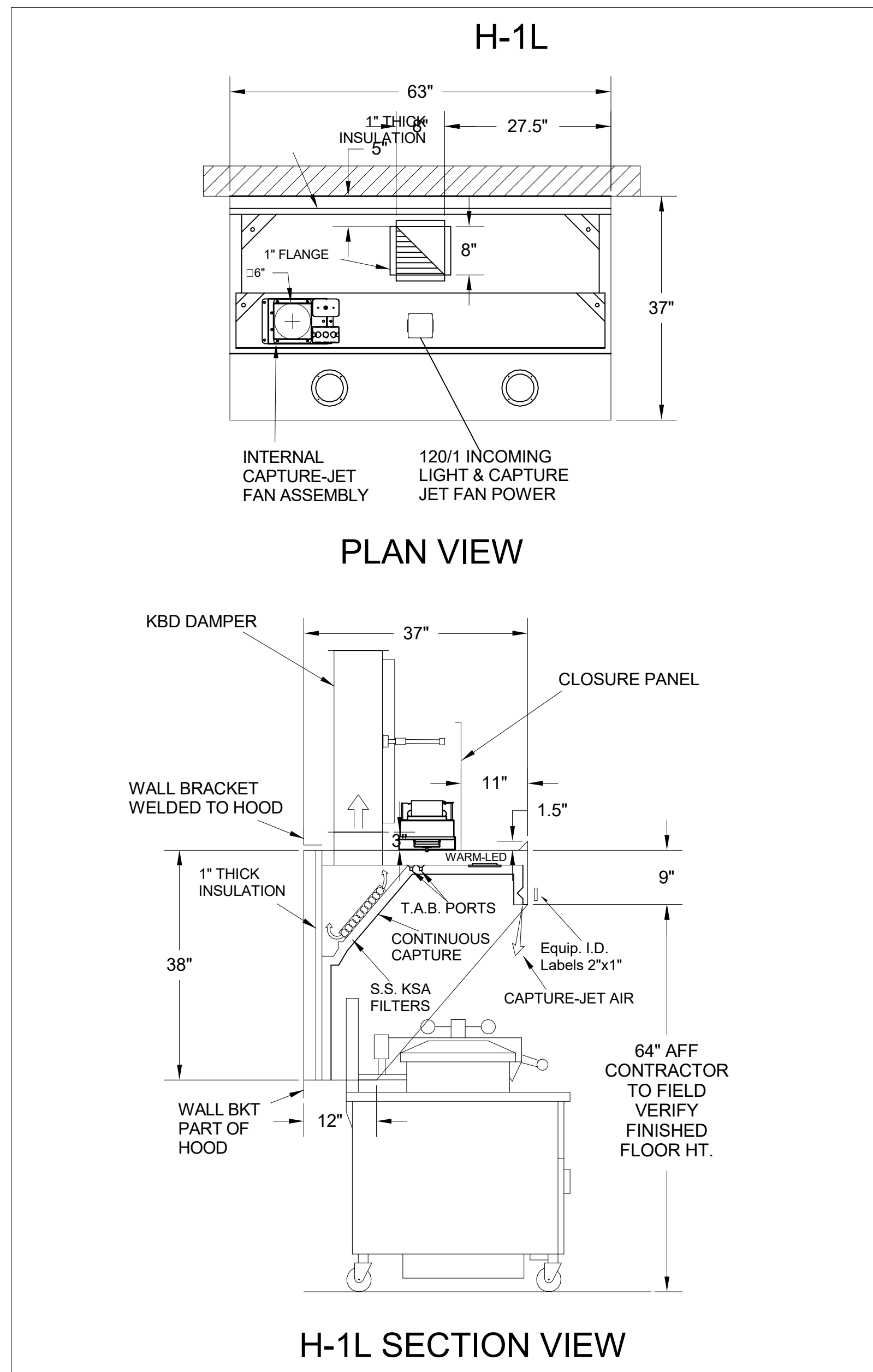
HOOD MODEL	HOOD NUMBER	EXHAUST COLLAR			EXHAUST AIR INFORMATION			CAPTURE AIR INFORMATION		S.S. KSA FILTERS		CEILING CLOSURES					MATERIAL		
		QTY	LENGTH	WIDTH	CFM	TAB	SP	CFM	SP	FULL	HALF	LED LIGHTS	QTY	CLOSURE HEIGHT	CEILING HEIGHT	HOOD WEIGHT		KBD DAMPER	K FACTOR (CFM = K FACTOR * √DP)
KVL-2-IC	H-1L	1	8"	8"	709	0.13"	0.23"	47	0.30"	3	-	2	2	51"	122"	394 LBS	*	1959	EXPOSED SURFACES 18 GA. S.S.
KVL-2-IC	H-1R	1	14"	8"	1204	0.13"	0.22"	80	0.30"	5	-	3	2			669 LBS	*	3365	
KVL-C-IC	H-2	1	8"	8"	701	0.30"	0.39"	30	0.29"	2	-	1	2			245 LBS	*	1291	
KVL-C-IC	H-3	1	8"	8"	701	0.30"	0.39"	30	0.29"	2	-	1	3			245 LBS	*	1291	

FOR REFERENCE ONLY



TAG	"L"	"W"	QUANTITY
H-1L	8"	8"	1
H-1R	14	8"	1
H-2	8"	8"	1
H-3	8"	8"	1

MATERIAL: FRAME - 16GA CONT. GALV.
ADJUSTABLE PANEL 18GA S.S.



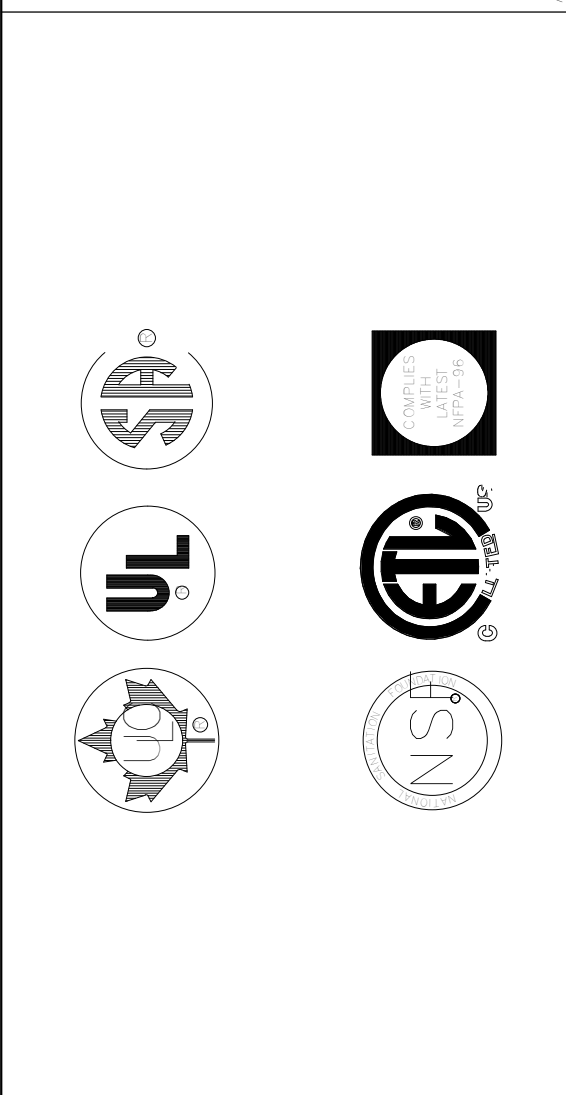
- CEILING CLOSURE RECESSED 11" FROM FRONT TO CREATE SHELF
- 36"x24" ACCESS DOOR LEFT SIDE FOR ACCESS TO CAPTURE-JET WITH FRONT CJ INTAKE & KBD
- CONTINUOUS CAPTURE INTERNAL RIGHT END CUTOUT
- 3" REAR STAND-OFF TO HAVE 1" THICK INSULATION
- EQUIPMENT COVERED:
(3) PRESSURE FRYERS

- CEILING CLOSURE RECESSED 11" FROM FRONT TO CREATE SHELF
- FRONT CLOSURE PANEL WITH 40"x24" LIFT OUT DOOR RIGHT SIDE (ACCESS TO FIRE SUPPRESSION)
- 40"x24" LIFT DOOR LEFT SIDE AT CAPTURE-JET WITH FRONT CJ INTAKE
- CONTINUOUS CAPTURE INTERNAL LEFT END CUTOUT
- 3" REAR STAND-OFF TO HAVE 1" THICK INSULATION
- NOTCHED RIGHT END PANEL
- EQUIPMENT COVERED:
(4) PRESSURE FRYERS
(2) GRILLS
- ANSUL WEIGHT = 286 LBS
- AMEREX WEIGHT = 264 LBS

- CEILING CLOSURE RECESSED 10" FROM FRONT TO CREATE SHELF
- 18"x18" ACCESS DOOR CENTERED AT CAPTURE-JET WITH FRONT CJ INTAKE
- NOTCHED RIGHT END PANEL
- DOUBLE RECEPTACLE PIN & SLEEVE
- 3"x3" TRIM STRIP FOR STANDOFF ON LEFT END
- 3" SIDE & REAR STAND-OFF TO HAVE 1" THICK INSULATION
- EQUIPMENT COVERED:
(2) FRYERS

- CEILING CLOSURE RECESSED 10" FROM FRONT TO CREATE SHELF
- 18"x18" ACCESS DOOR CENTERED AT CAPTURE-JET WITH FRONT CJ INTAKE
- NOTCHED LEFT END PANEL
- DOUBLE RECEPTACLE PIN & SLEEVE
- 3" REAR STAND-OFF TO HAVE 1" THICK INSULATION
- EQUIPMENT COVERED:
(2) FRYERS

THE DRAWING MUST BE CHECKED, SIGNED AND RETURNED TO THE APPROPRIATE FACTORY. PLEASE VERIFYING THE FOLLOWING:
1. ALL DIMENSIONAL INFORMATION, MOUNTING POSITIONS AND CLEARANCES.
2. THE TYPE OF COOKING EQUIPMENT.
3. THE TYPE OF COOKING EQUIPMENT.
4. THE TYPE OF COOKING EQUIPMENT.
5. THE TYPE OF COOKING EQUIPMENT.
6. THE TYPE OF COOKING EQUIPMENT.
7. THE TYPE OF COOKING EQUIPMENT.
8. THE TYPE OF COOKING EQUIPMENT.
9. THE TYPE OF COOKING EQUIPMENT.
10. THE TYPE OF COOKING EQUIPMENT.
11. THE TYPE OF COOKING EQUIPMENT.
12. THE TYPE OF COOKING EQUIPMENT.
13. THE TYPE OF COOKING EQUIPMENT.
14. THE TYPE OF COOKING EQUIPMENT.
15. THE TYPE OF COOKING EQUIPMENT.
16. THE TYPE OF COOKING EQUIPMENT.
17. THE TYPE OF COOKING EQUIPMENT.
18. THE TYPE OF COOKING EQUIPMENT.
19. THE TYPE OF COOKING EQUIPMENT.
20. THE TYPE OF COOKING EQUIPMENT.
21. THE TYPE OF COOKING EQUIPMENT.
22. THE TYPE OF COOKING EQUIPMENT.
23. THE TYPE OF COOKING EQUIPMENT.
24. THE TYPE OF COOKING EQUIPMENT.
25. THE TYPE OF COOKING EQUIPMENT.
26. THE TYPE OF COOKING EQUIPMENT.
27. THE TYPE OF COOKING EQUIPMENT.
28. THE TYPE OF COOKING EQUIPMENT.
29. THE TYPE OF COOKING EQUIPMENT.
30. THE TYPE OF COOKING EQUIPMENT.
31. THE TYPE OF COOKING EQUIPMENT.
32. THE TYPE OF COOKING EQUIPMENT.
33. THE TYPE OF COOKING EQUIPMENT.
34. THE TYPE OF COOKING EQUIPMENT.
35. THE TYPE OF COOKING EQUIPMENT.
36. THE TYPE OF COOKING EQUIPMENT.
37. THE TYPE OF COOKING EQUIPMENT.
38. THE TYPE OF COOKING EQUIPMENT.
39. THE TYPE OF COOKING EQUIPMENT.
40. THE TYPE OF COOKING EQUIPMENT.
41. THE TYPE OF COOKING EQUIPMENT.
42. THE TYPE OF COOKING EQUIPMENT.
43. THE TYPE OF COOKING EQUIPMENT.
44. THE TYPE OF COOKING EQUIPMENT.
45. THE TYPE OF COOKING EQUIPMENT.
46. THE TYPE OF COOKING EQUIPMENT.
47. THE TYPE OF COOKING EQUIPMENT.
48. THE TYPE OF COOKING EQUIPMENT.
49. THE TYPE OF COOKING EQUIPMENT.
50. THE TYPE OF COOKING EQUIPMENT.
51. THE TYPE OF COOKING EQUIPMENT.
52. THE TYPE OF COOKING EQUIPMENT.
53. THE TYPE OF COOKING EQUIPMENT.
54. THE TYPE OF COOKING EQUIPMENT.
55. THE TYPE OF COOKING EQUIPMENT.
56. THE TYPE OF COOKING EQUIPMENT.
57. THE TYPE OF COOKING EQUIPMENT.
58. THE TYPE OF COOKING EQUIPMENT.
59. THE TYPE OF COOKING EQUIPMENT.
60. THE TYPE OF COOKING EQUIPMENT.
61. THE TYPE OF COOKING EQUIPMENT.
62. THE TYPE OF COOKING EQUIPMENT.
63. THE TYPE OF COOKING EQUIPMENT.
64. THE TYPE OF COOKING EQUIPMENT.
65. THE TYPE OF COOKING EQUIPMENT.
66. THE TYPE OF COOKING EQUIPMENT.
67. THE TYPE OF COOKING EQUIPMENT.
68. THE TYPE OF COOKING EQUIPMENT.
69. THE TYPE OF COOKING EQUIPMENT.
70. THE TYPE OF COOKING EQUIPMENT.
71. THE TYPE OF COOKING EQUIPMENT.
72. THE TYPE OF COOKING EQUIPMENT.
73. THE TYPE OF COOKING EQUIPMENT.
74. THE TYPE OF COOKING EQUIPMENT.
75. THE TYPE OF COOKING EQUIPMENT.
76. THE TYPE OF COOKING EQUIPMENT.
77. THE TYPE OF COOKING EQUIPMENT.
78. THE TYPE OF COOKING EQUIPMENT.
79. THE TYPE OF COOKING EQUIPMENT.
80. THE TYPE OF COOKING EQUIPMENT.
81. THE TYPE OF COOKING EQUIPMENT.
82. THE TYPE OF COOKING EQUIPMENT.
83. THE TYPE OF COOKING EQUIPMENT.
84. THE TYPE OF COOKING EQUIPMENT.
85. THE TYPE OF COOKING EQUIPMENT.
86. THE TYPE OF COOKING EQUIPMENT.
87. THE TYPE OF COOKING EQUIPMENT.
88. THE TYPE OF COOKING EQUIPMENT.
89. THE TYPE OF COOKING EQUIPMENT.
90. THE TYPE OF COOKING EQUIPMENT.
91. THE TYPE OF COOKING EQUIPMENT.
92. THE TYPE OF COOKING EQUIPMENT.
93. THE TYPE OF COOKING EQUIPMENT.
94. THE TYPE OF COOKING EQUIPMENT.
95. THE TYPE OF COOKING EQUIPMENT.
96. THE TYPE OF COOKING EQUIPMENT.
97. THE TYPE OF COOKING EQUIPMENT.
98. THE TYPE OF COOKING EQUIPMENT.
99. THE TYPE OF COOKING EQUIPMENT.
100. THE TYPE OF COOKING EQUIPMENT.



REV.	DATE	BY	DESCRIPTION
1			
2			
3			
4			
5			
6			
7			

PROJECT: **CHICK-FL-A**

LOCATION: **EAST SPRINGFIELD FSU**

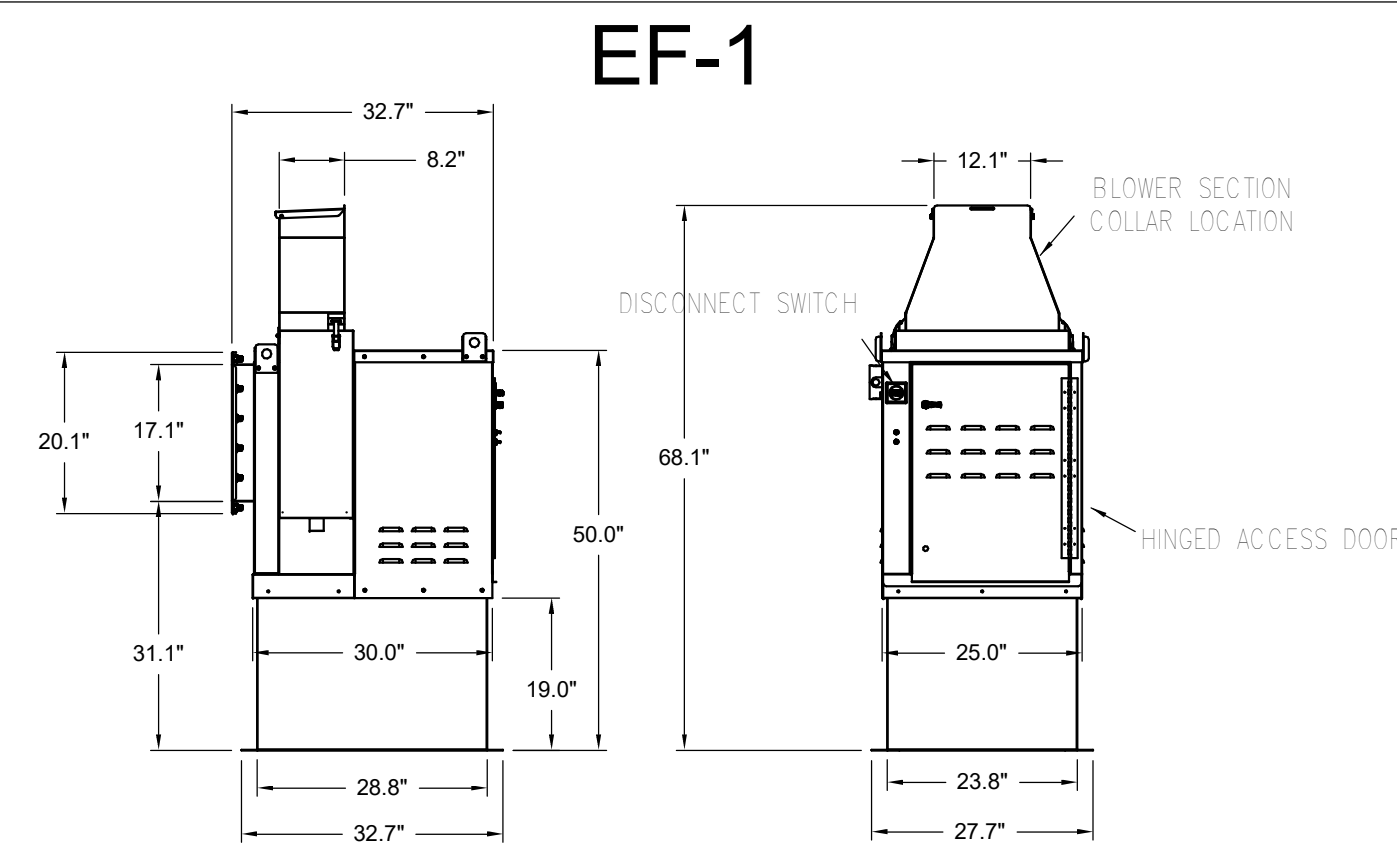
DRAWN BY: **DATE: 5/21/2025**

SCALE: **NTS**

Halton Dwg: **Halton**

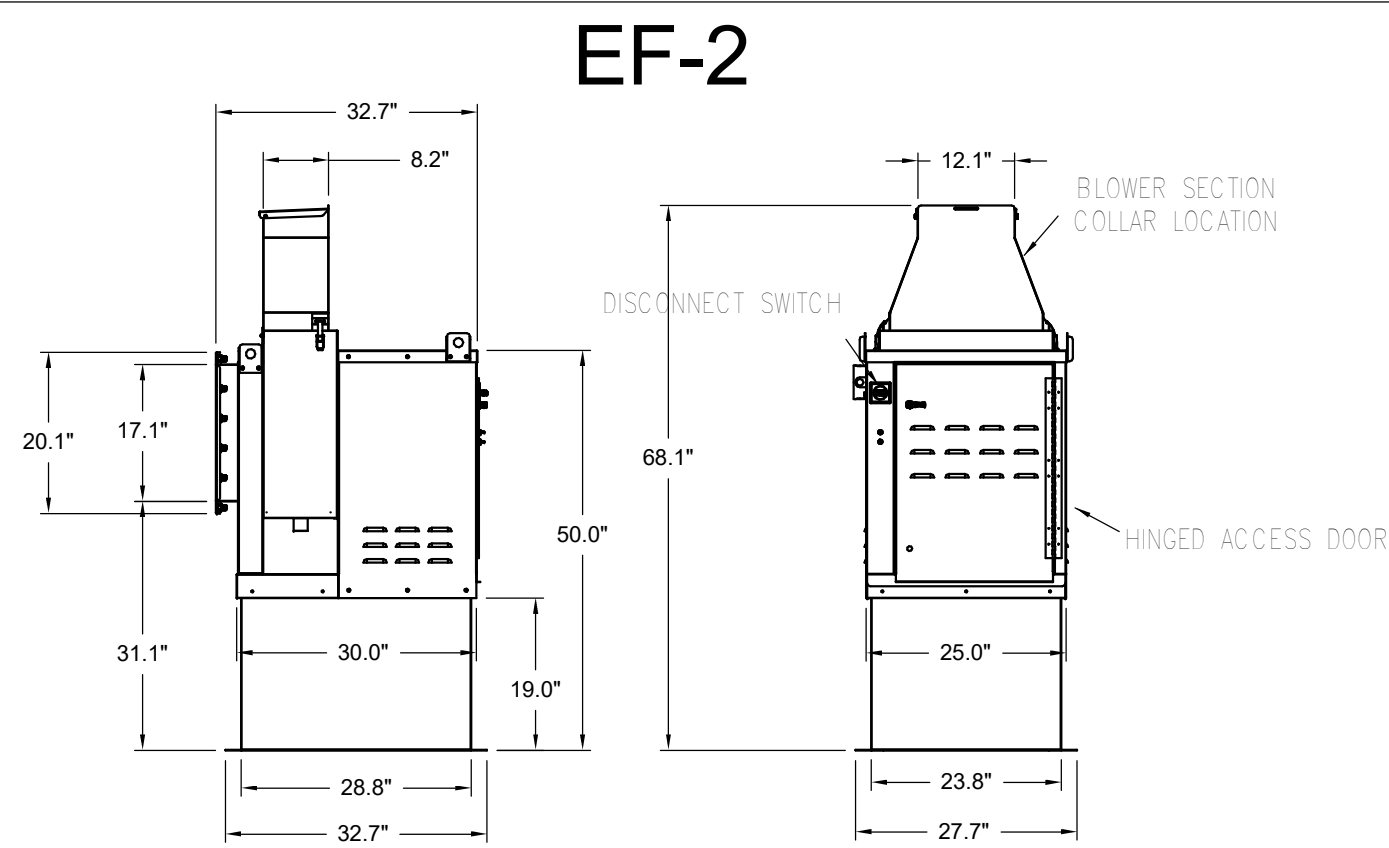
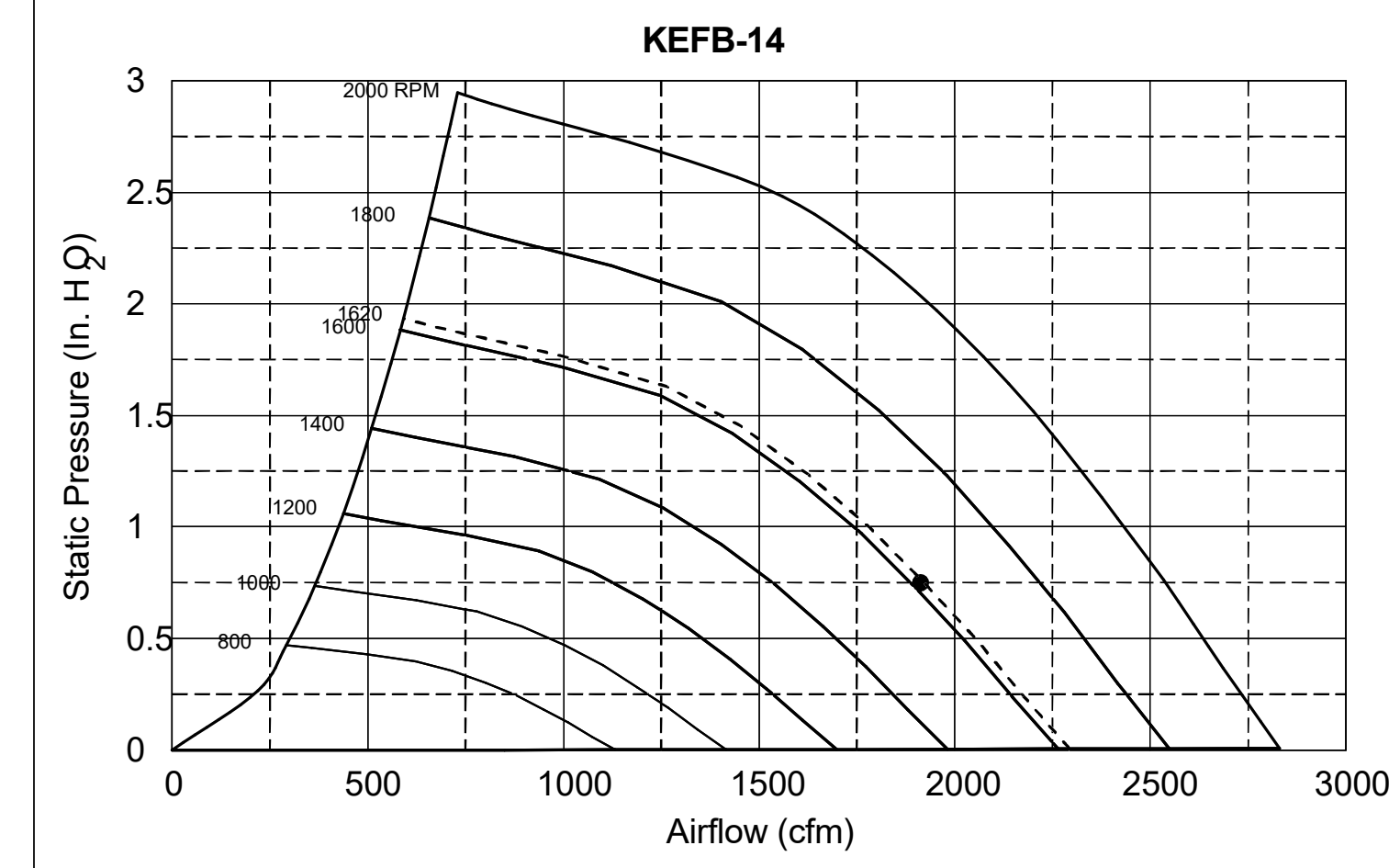
Sheet **MH-1.1**

FOR REFERENCE ONLY



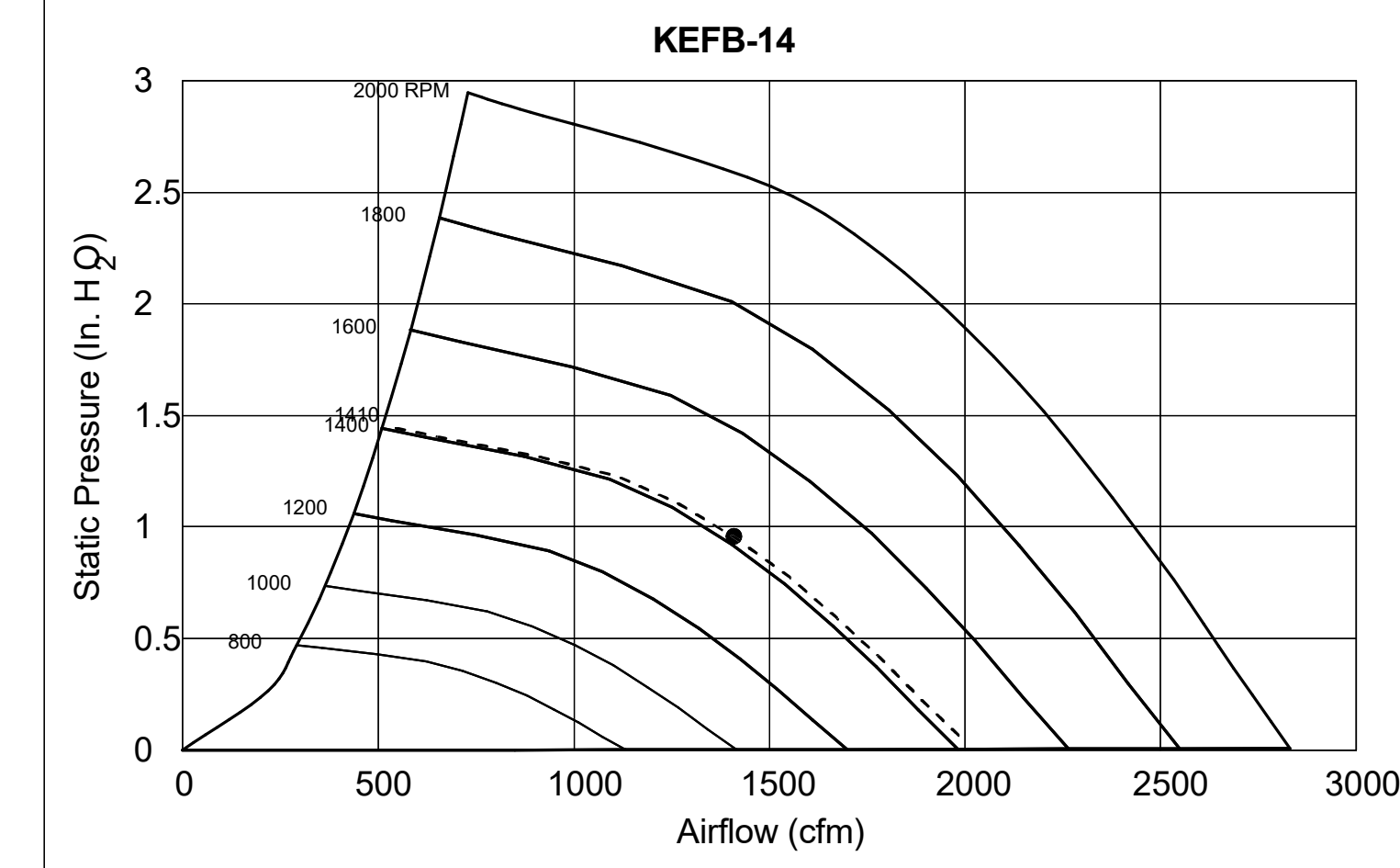
Halton KEFB Exhaust Fan

Job Name	Chick-Fl-A	Location	EF-1	Item No	1,747	Qty	115/160	Motor HP	0.75	TAB Port, in WC	4
Date	1/26/2023	Model	KEFB-14	Fan RPM	1,207	Fan BHP	0.38	Motor HP	0.75		
Airflow, cfm	1,913	Static Pressure, in WC	0.75								



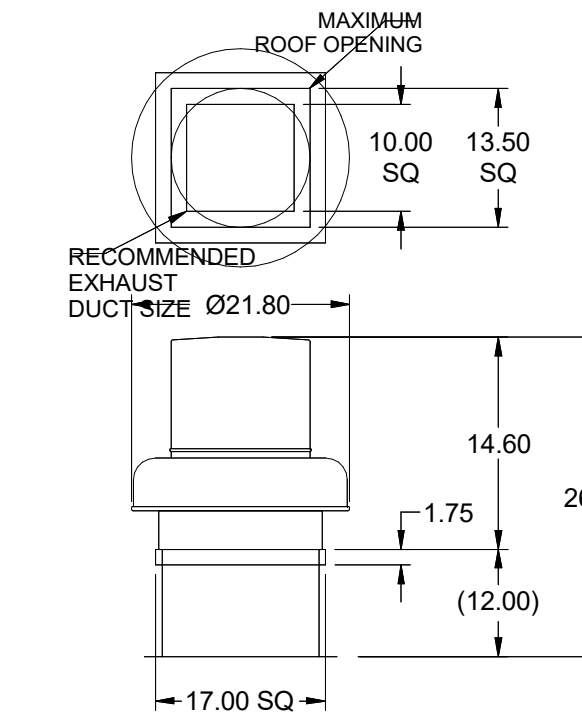
Halton KEFB Exhaust Fan

Job Name	Chick-Fl-A	Location	EF-2	Item No	1,522	Qty	115/160	Motor HP	0.75	TAB Port, in WC	2.1
Date	1/26/2023	Model	KEFB-14	Fan RPM	1,207	Fan BHP	0.38	Motor HP	0.75		
Airflow, cfm	1,402	Static Pressure, in WC	0.95								



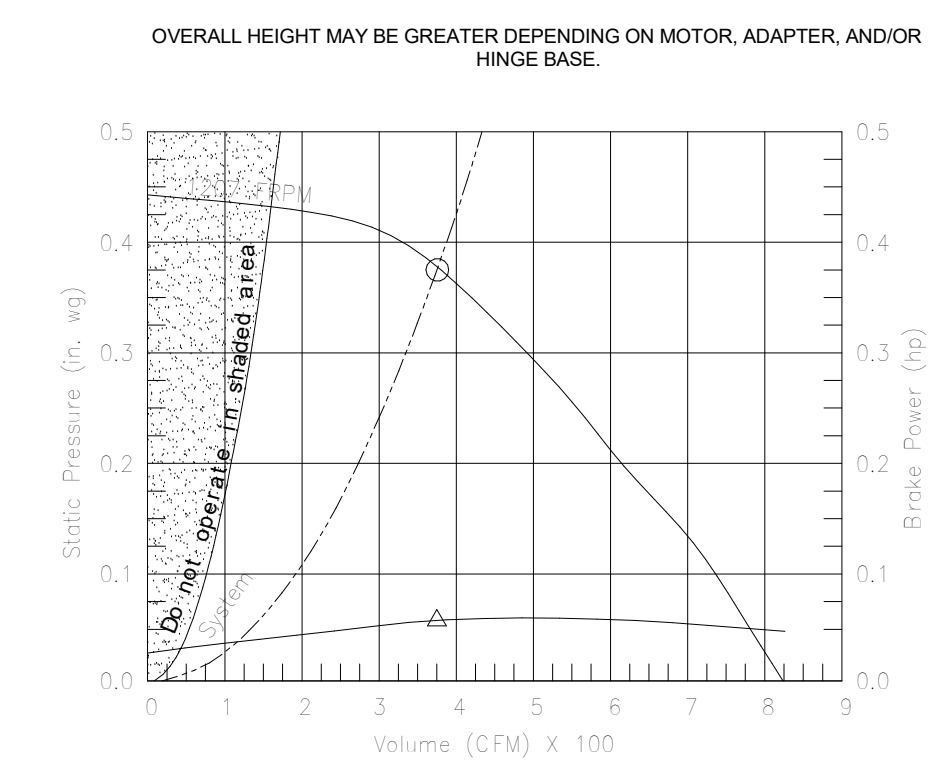
Model: XRED-095-VG
Direct Drive Centrifugal Roof Exhaust Fan

Dimensional	
Quantity	1
Weight w/o Acc's (lb)	28
Weight w/ Acc's (lb)	35
Weight w/ Acc's and Curb (lb)	49
Standard Curb Cap Size (in.)	17 x 17
Optional Damper (in.)	10 x 10
Roof Opening (in.)	13.5 x 13.5
Performance	
Requested Volume (CFM)	375
Actual Volume (CFM)	375
Total External SP (in. wg)	0.375
Fan RPM	1207
Operating Power (hp)	0.05
Elevation (ft)	23
Airstream Temp. (F)	70
Air Density (lb/ft ³)	0.075
Tip Speed (ft/min)	3,437
Static Eff. (%)	41
Misc Fan Data	
Fan Eff. Index (FEI)	-
Outlet Velocity (ft/min)	323



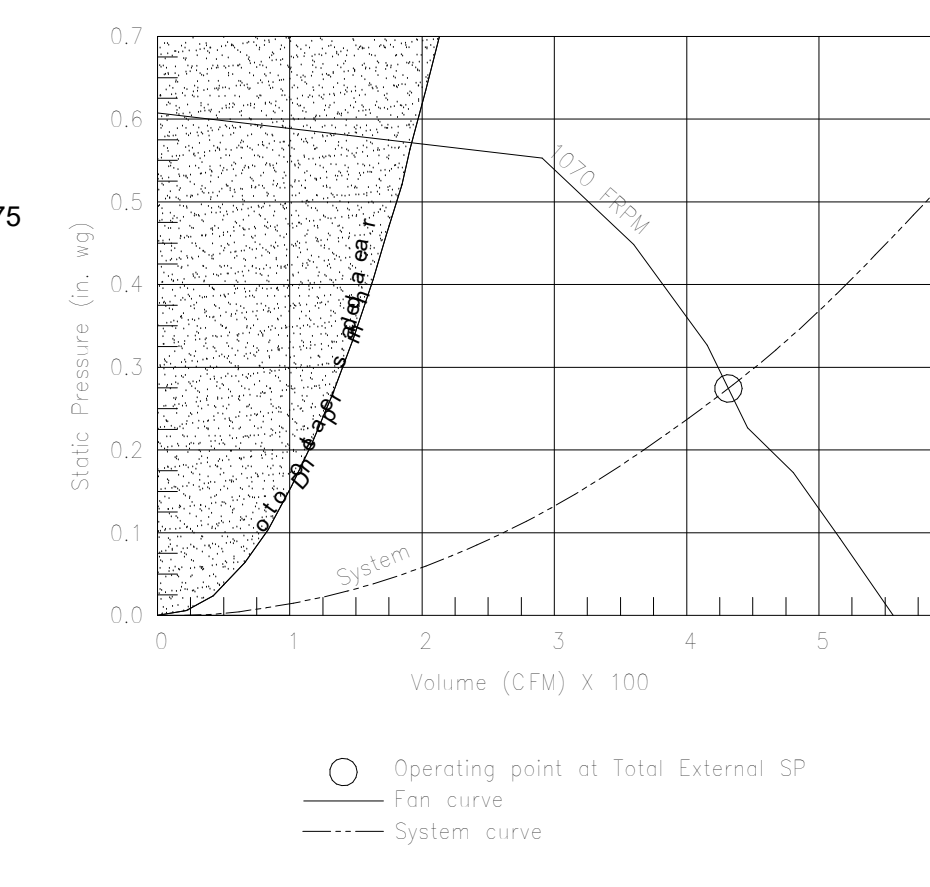
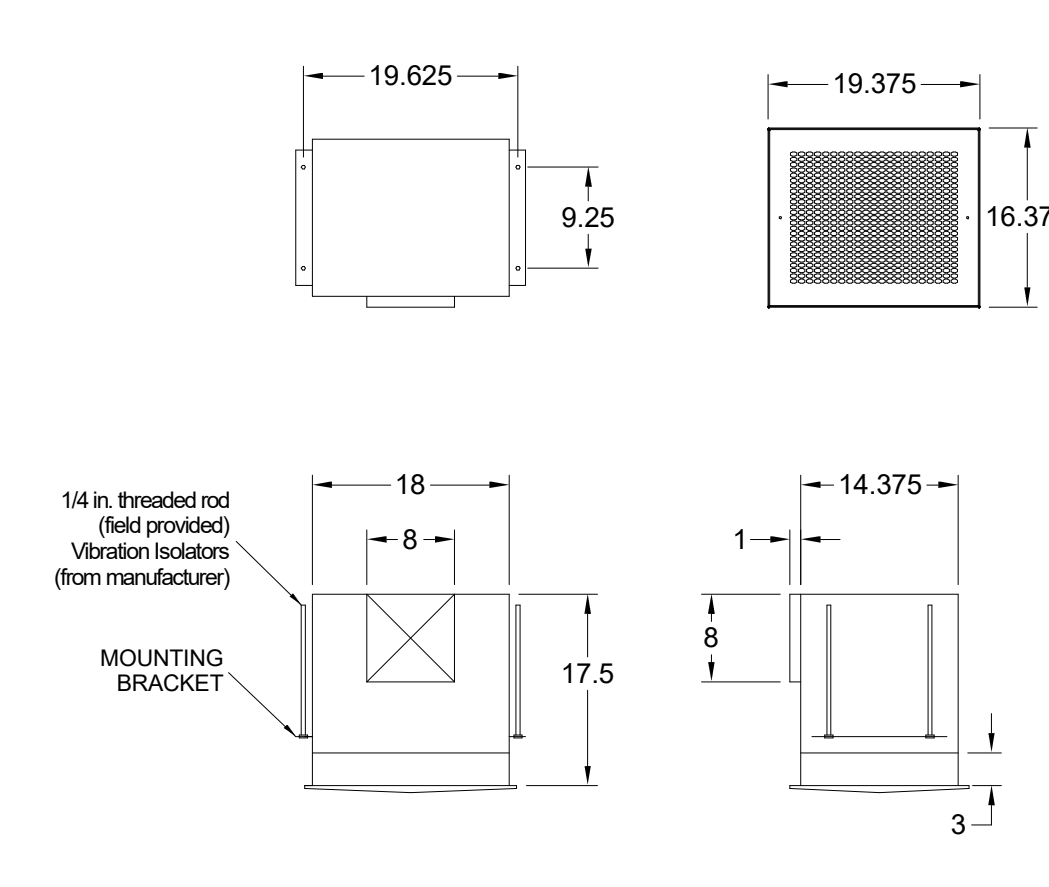
Motor	
Motor Mounted	Yes
Size (hp)	1/8 (or greater)
Voltage/Cycle/Phase	115/60/1
Enclosure	ODP
Motor RPM	1550
Efficiency Rating	Standard
Windings	1

EF-3



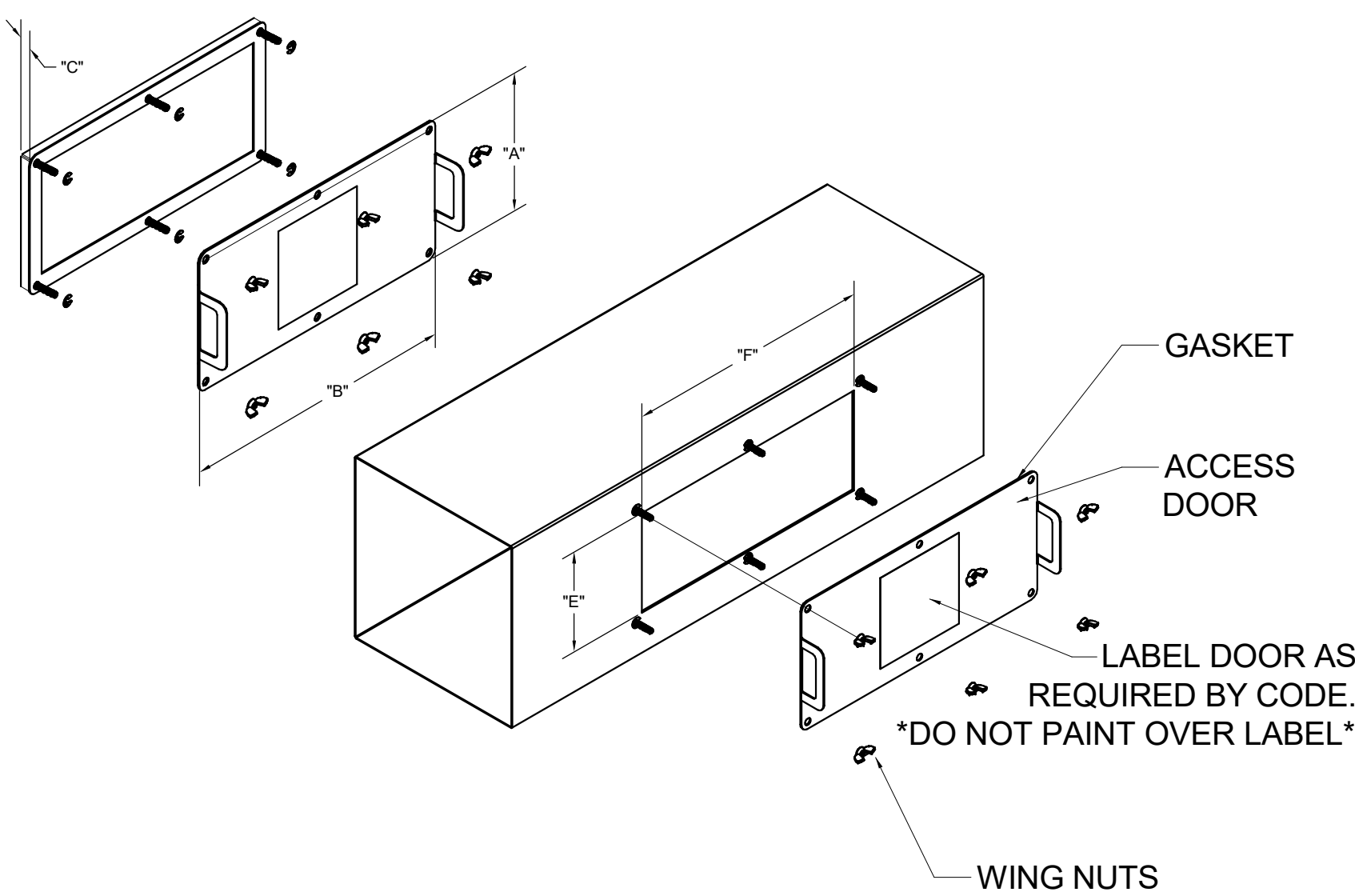
Model: SP-A510-VG

Dimensional	
Quantity	1
Weight w/o Acc's (lb)	31
Weight w/ Acc's (lb)	40
Performance	
Requested Volume (CFM)	450
Actual Volume (CFM)	431
Total External SP (in. wg)	0.275
Fan RPM	1070
*FLA (A)	3.3
Elevation (ft)	23
Airstream Temp. (F)	70
Air Density (lb/ft ³)	0.075
Sones	4.5
Motor	
Motor Mounted	Yes
** Input Watts (W)	224
Voltage/Cycle/Phase	115/60/1
Enclosure	ODP

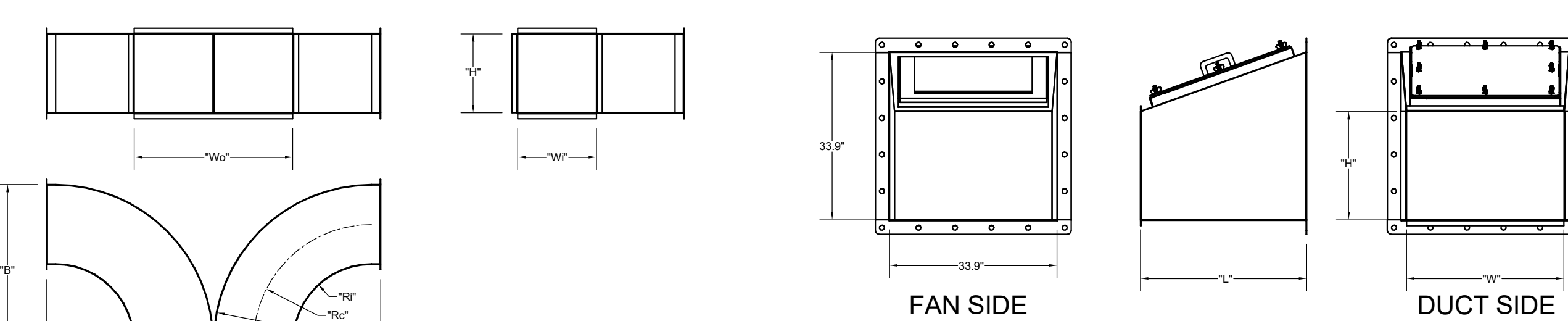
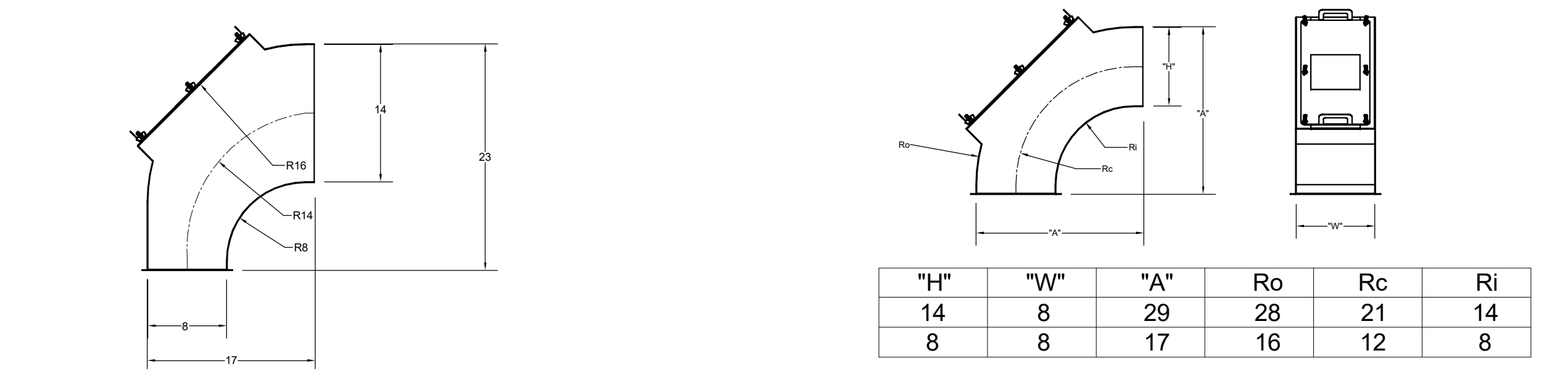


MODEL	GREASE ACCESS DOOR				
	DOOR SCHEDULE	OPTIONAL FLANGE	OPENING		
	"A"	"B"	"C"	"E"	"F"
KAP0715	7	15	FLAT	5.5	13.5
KAP1015	10	15	1/2	7	12

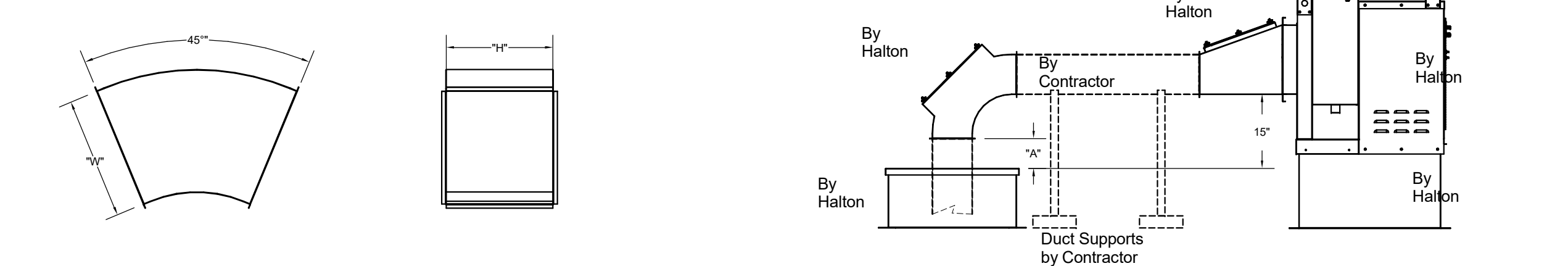
ACCESS DOORS SHALL BE U.L. 1978 LISTED OR FIELD RECOGNIZED TOOLS FOR REMOVAL AND MEET THE REQUIREMENTS OF THE CURRENT EDITION OF THE IBC. ACCESS DOORS SHALL BE SECURED WITH 1/2" SCREWS. ACCESS DOORS SHALL BE SEALED WITH MINIMUM 1500 DEREZ GASKET MATERIAL.



INSTALL PER MANUFACTURER'S INSTRUCTIONS

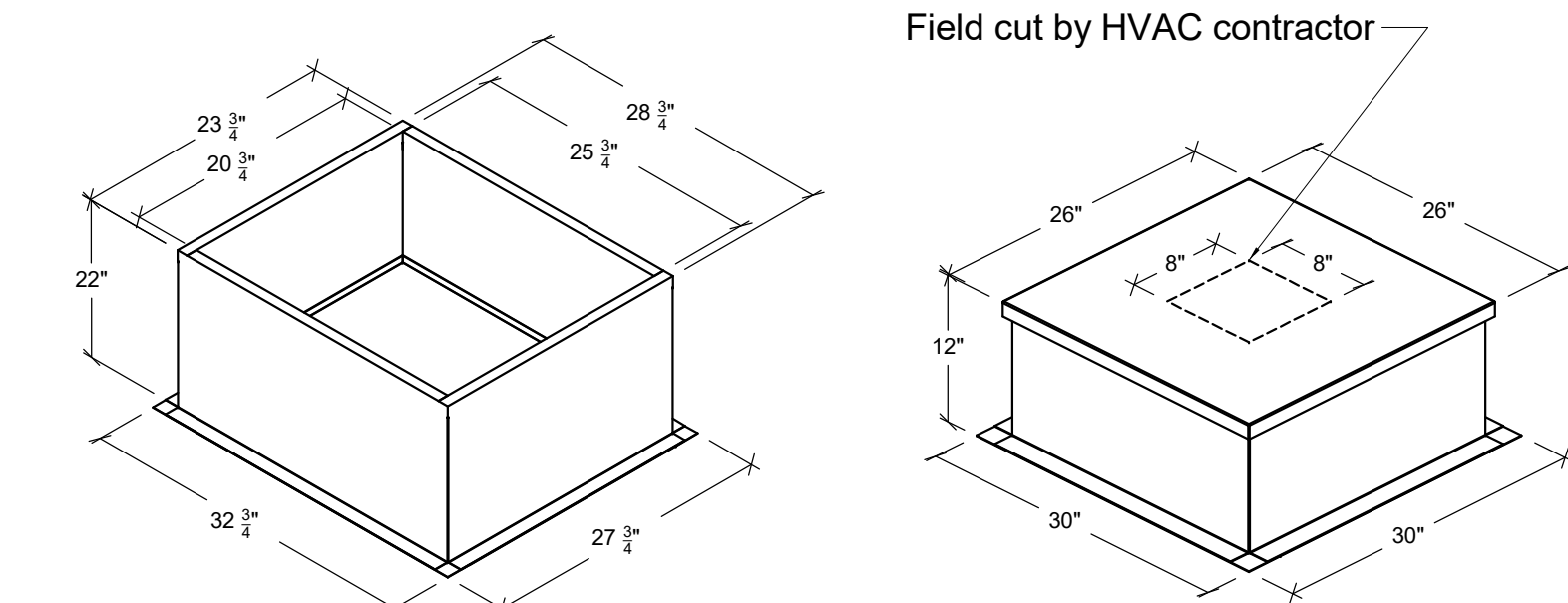


	TRANSITION	"H"	"W"	"L"		
					"A"	"B"
EF-1	(5)	14	16	25	34	17
EF-2	(6)	10	16	17	34	17



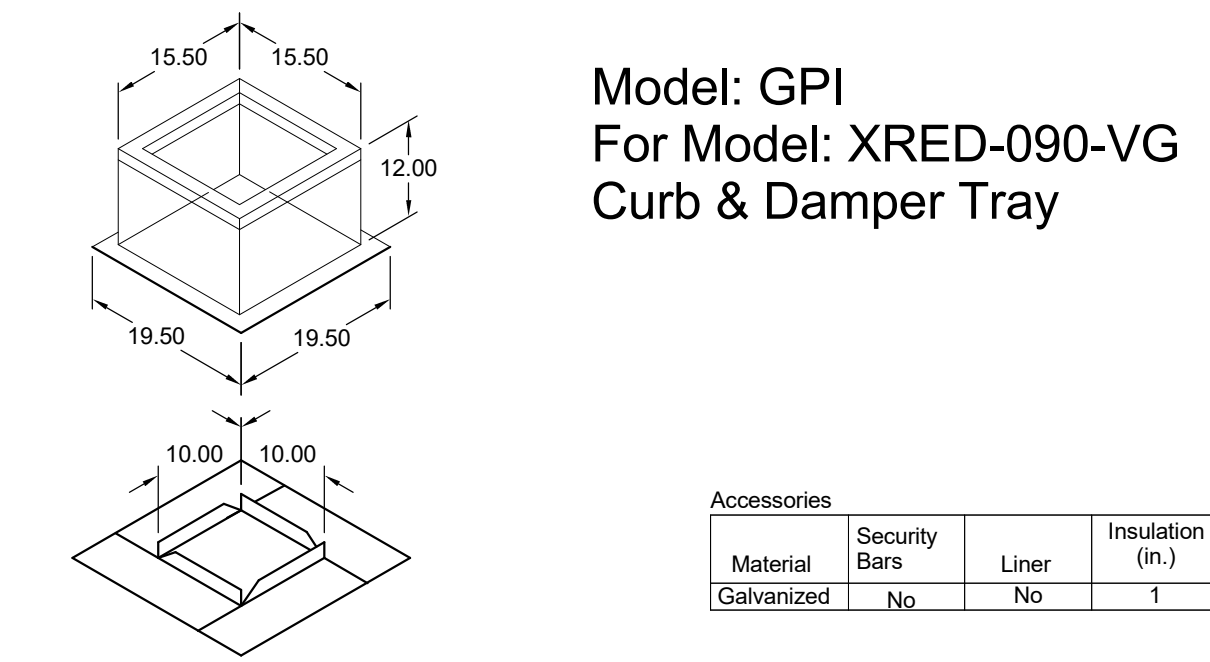
	SLOPE	"A"	
			"B"
EF-1	14X8	8	34
EF-2	8X8	10	17

Halton Kitchen Exhaust Fan Curb Insulated Duct Curb



Kitchen Exhaust Fan Roof Curb Standard Construction Features:
- Roof Curb fits between the building roof and the fan mounted directly to the roof support structure - Constructed of 16 ga aluminum steel - Straight Sided without a cant - 2 in. mounting flange - Height is 22 in.

Insulated Duct Curb Standard Construction Features:
- Duct Curb fits between the building roof and the fan mounted directly to the roof support structure - Constructed of 16 ga aluminum steel - Straight Sided without a cant - 2 in. mounting flange - Height is 12 in. - 16 ga. cap



General							
Tag	Qty	Model	Sizing Method	Undersizing (in.)	Weight (lb)	Shipped Assembled	Union Label
EF-3	1	GPI-17	Nominal	1.5	14	Yes	No Preference
Dimensions							
Curb Height (in.)	Nominal Outside Width (in.)	Nominal Outside Length (in.)	Actual Outside Width (in.)	Actual Outside Length (in.)	Actual Inside Width (in.)	Actual Inside Length (in.)	Hinge Base Width (in.)
12	17	17	15.5	15.5	12	12	19.5
*May not be applicable							

PROJECT: **CHICK-FL-A**

LOCATION: EAST SPRINGFIELD FSU

DRAWN BY: NTS

DATE: 5/21/2025

SCALE: Halton Dwg.

Sheet: **MH-1.4**

MAIL APPROVED DRAWINGS TO APPROPRIATE FACTORY. BELOW WEBSITE: WWW.HALTONCOMPANY.COM

HALTON CO. (CANADA)
1021 BREVIK PLACE
MISSISSAUGA, ON L4W 3R7
1-905-624-0301

HALTON CO. (USA)
101 INDUSTRIAL DRIVE
SCOTTSDALE, AZ 85264
1-270-237-5600

REVISION DESCRIPTION

REV.	DATE	BY
1		
2		
3		
4		
5		
6		
7		

Accessories

Material	Security Bars	Liner	Insulation (in.)	Insulation R Value
Galvanized	No	No	1	R4.3

Approved by: _____

DATE: _____

WITH NO CHANGES

WITH CHANGES AS NOTED

UL, NSF, IAPMO, CSA, ETL, NEMA, CE, ISO 9001, ISO 14001, ISO 45001

