

HOOD INFORMATION - JOB#8171488

HOOD NO	TAG	MODEL	MANUFACTURER	LENGTH	MAX COOKING TEMP	TYPE	APPLIANCE DUTY	DESIGN CFM/FT	TOTAL EXH CFM	EXHAUST PLENUM RISER(S)					TOTAL SUPPLY CFM	HOOD CONSTRUCTION	END TO END	ROW
										HEIGHT	DIA	CFM	VEL	SP				
1	HD1-Grill	3650 ELPX-2	ECON-AIR	6' 0"	600 DEG	I	HEAVY	192	1150	4"	12"	1150	1464	-0.710"	0	430 SS WHERE EXPOSED	ALONE	ALONE
2	HD1-PSP	246 Misc ACPSP-ONLY	ECON-AIR	6' 0"	300 DEG	N/A	N/A	0	0						775	430 SS WHERE EXPOSED	ALONE	ALONE
3	HD2-Fry	3650 ELPX-2	ECON-AIR	4' 2"	600 DEG	I	HEAVY	204	850	4"	10"	850	1558	-0.752"	0	430 SS WHERE EXPOSED	ALONE	ALONE
4	HD2-PSP	246 Misc ACPSP-ONLY	ECON-AIR	4' 2"	300 DEG	N/A	N/A	0	0						545	430 SS WHERE EXPOSED	ALONE	ALONE

FOR QUESTIONS, CALL THE CAPTIVE-AIRE (TRI-STATE) OFFICE
1329 E. KEMPER RD., SUITE 4210
PHONE: (513) 860-5555
joe.hertenstein@captiveaire.com

HOOD INFORMATION

HOOD NO	TAG	TYPE	FILTER(S)				LIGHT(S)			FIRE SYSTEM PIPING	HOOD HANGING WEIGHT
			QTY	HEIGHT	LENGTH	EFFICIENCY @ 7 MICRONS	QTY	TYPE	WIRE GUARD		
1	HD1-Grill	CAPTRATE SOLO FILTER	4	16"	16"	85% SEE FILTER SPEC	3	L55 SERIES E26	NO	YES	256 LBS
2	HD1-PSP						0			NO	93 LBS
3	HD2-Fry	CAPTRATE SOLO FILTER	3	16"	16"	85% SEE FILTER SPEC	2	L55 SERIES E26	NO	YES	233 LBS
4	HD2-PSP						0			NO	61 LBS

HOOD OPTIONS

HOOD NO	TAG	OPTION
1	HD1-Grill	FIELD WRAPPER 14.50" HIGH FRONT, LEFT, RIGHT.
		BACKSPLASH 104.00" HIGH X 108.00" LONG 430 SS VERTICAL.
		RIGHT QUARTER END PANEL 26" TOP WIDTH, 0" BOTTOM WIDTH, 26" HIGH 430 SS.
		LEFT QUARTER END PANEL 26" TOP WIDTH, 0" BOTTOM WIDTH, 26" HIGH 430 SS. SENSOR-CV.
3	HD2-Fry	FIELD WRAPPER 14.50" HIGH FRONT, LEFT, RIGHT.
		BACKSPLASH 104.00" HIGH X 86.00" LONG 430 SS VERTICAL.
		LEFT QUARTER END PANEL 26" TOP WIDTH, 0" BOTTOM WIDTH, 26" HIGH 430 SS.
		RIGHT VERTICAL END PANEL 26" TOP WIDTH, 26" BOTTOM WIDTH, 61" HIGH INSULATED 430 SS. SENSOR-CV.

PERFORATED SUPPLY PLENUM(S)

HOOD NO	TAG	POS	LENGTH	WIDTH	HEIGHT	TYPE	RISER(S)			
							WIDTH	LENG	CFM	SP
2	HD1-PSP	Front	72"	10"	6"	AC	8"	24"	465	0.114"
		Back	72"	14"	6"	MUA	10"	28"	775	0.216"
4	HD2-PSP	Front	50"	10"	6"	AC	8"	16"	250	0.071"
		Back	50"	14"	6"	MUA	10"	20"	545	0.195"

WALL-MOUNT UTILITY CABINET

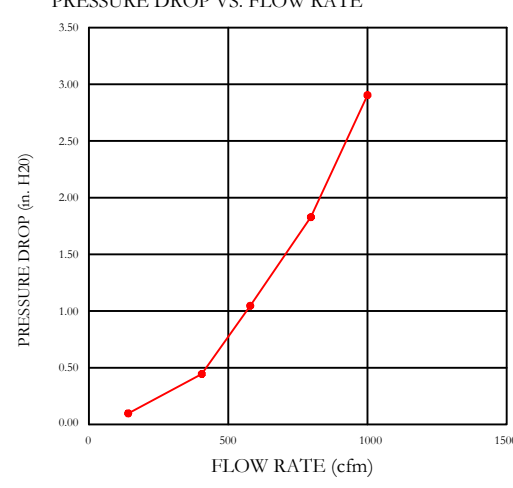
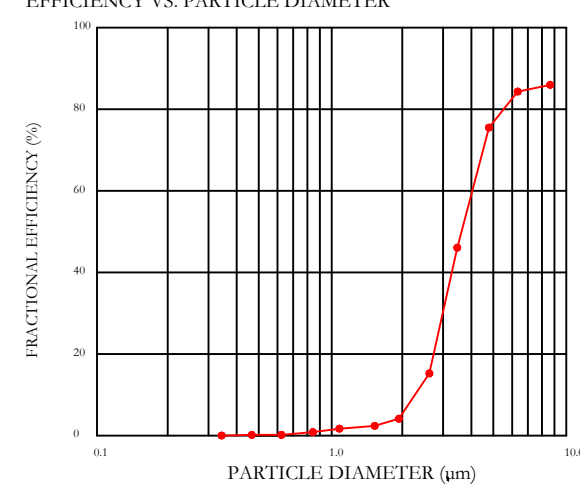
HOOD NO	LOCATION	SIZE	UTILITY CABINET(S)				WEIGHT
			FIRE SYSTEM TYPE	SIZE	ELECTRICAL MODEL #	SWITCHES QUANTITY	
1	WALL MNT	12"x60"x24"	TANK FS	4.0/4.0	SC-E012022MA	2 LIGHT 2 FAN	340.00 LBS

GAS VALVE

FIRE SYSTEM NO	TAG	TYPE	SIZE	SUPPLIED BY
1	FS1	SC ELECTRICAL	1.250	ECON-AIR

SPECIFICATION: CAPTRATE GREASE-STOP SOLO FILTER

THE CAPTRATE GREASE-STOP SOLO FILTER IS A SINGLE-STAGE FILTER FEATURING A UNIQUE S-Baffle DESIGN IN CONJUNCTION WITH A SLOTTED REAR Baffle DESIGN, TO DELIVER EXCEPTIONAL FILTRATION EFFICIENCY. FILTER IS STAINLESS STEEL CONSTRUCTION, AND SIZED TO FIT INTO STANDARD 2-INCH DEEP HOOD CHANNEL(S). UNITS SHALL INCLUDE STAINLESS STEEL HANDLES AND A FASTENING DEVICE TO SECURE THE TWO COMPONENTS WHEN ASSEMBLED. GREASE EXTRACTION EFFICIENCY PERFORMANCE SHALL REMOVE AT LEAST 75% OF GREASE PARTICLES FIVE MICRONS IN SIZE, AND 85% GREASE PARTICLES SEVEN MICRONS IN SIZE AND LARGER, WITH A CORRESPONDING PRESSURE DROP NOT TO EXCEED 1.0 INCHES OF WATER GAUGE. THE CAPTRATE GREASE-STOP SOLO WAS TESTED TO ASTM STANDARD ASTM F2519-05.



CAPTRATE FILTERS ARE BUILT IN COMPLIANCE WITH:
NFPA #96
NSF STANDARD #2
UL STANDARD #1046
INT. MECH. CODE (MC)
ULC-5649

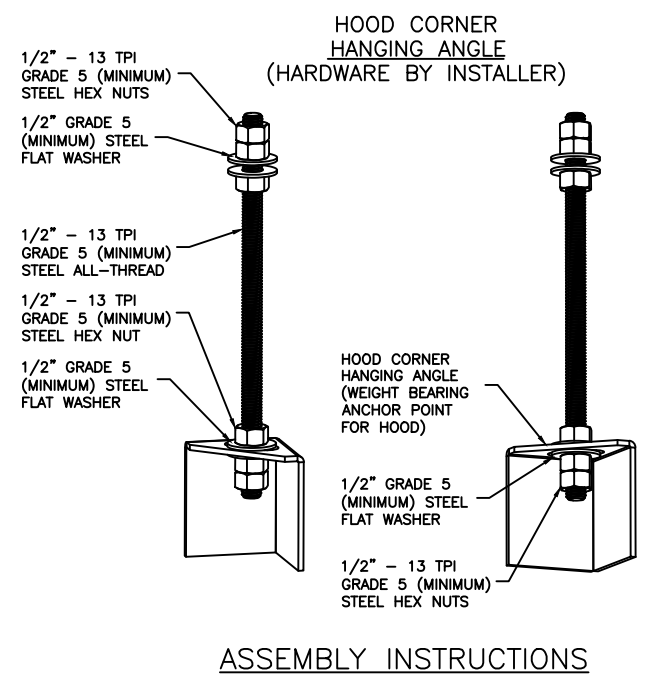


CAPTIVE-AIRE HOODS ARE BUILT IN COMPLIANCE WITH UL 710 AND NFPA 96 AND ARE RECOGNIZED BY ONE OR MORE OF THE FOLLOWING:

ETL SANITATION LISTED
ETL LISTED FILE# 3054804-001

GENERAL WIRING COMPONENTS ONLY (MUST READ ALL DETAILED DIRECTIONS ON THE CAPTIVE-AIRE ELECTRICAL DWG SHEET PROVIDED)

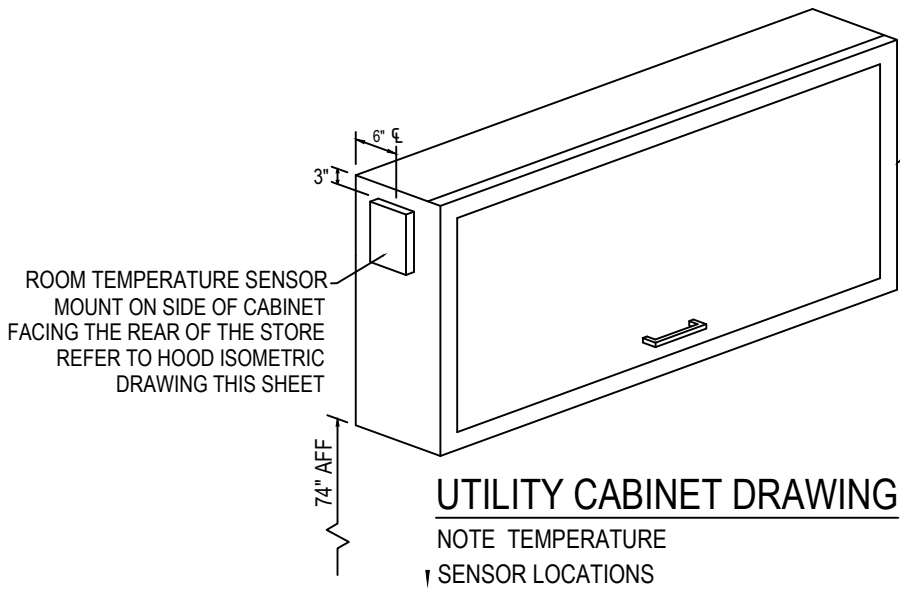
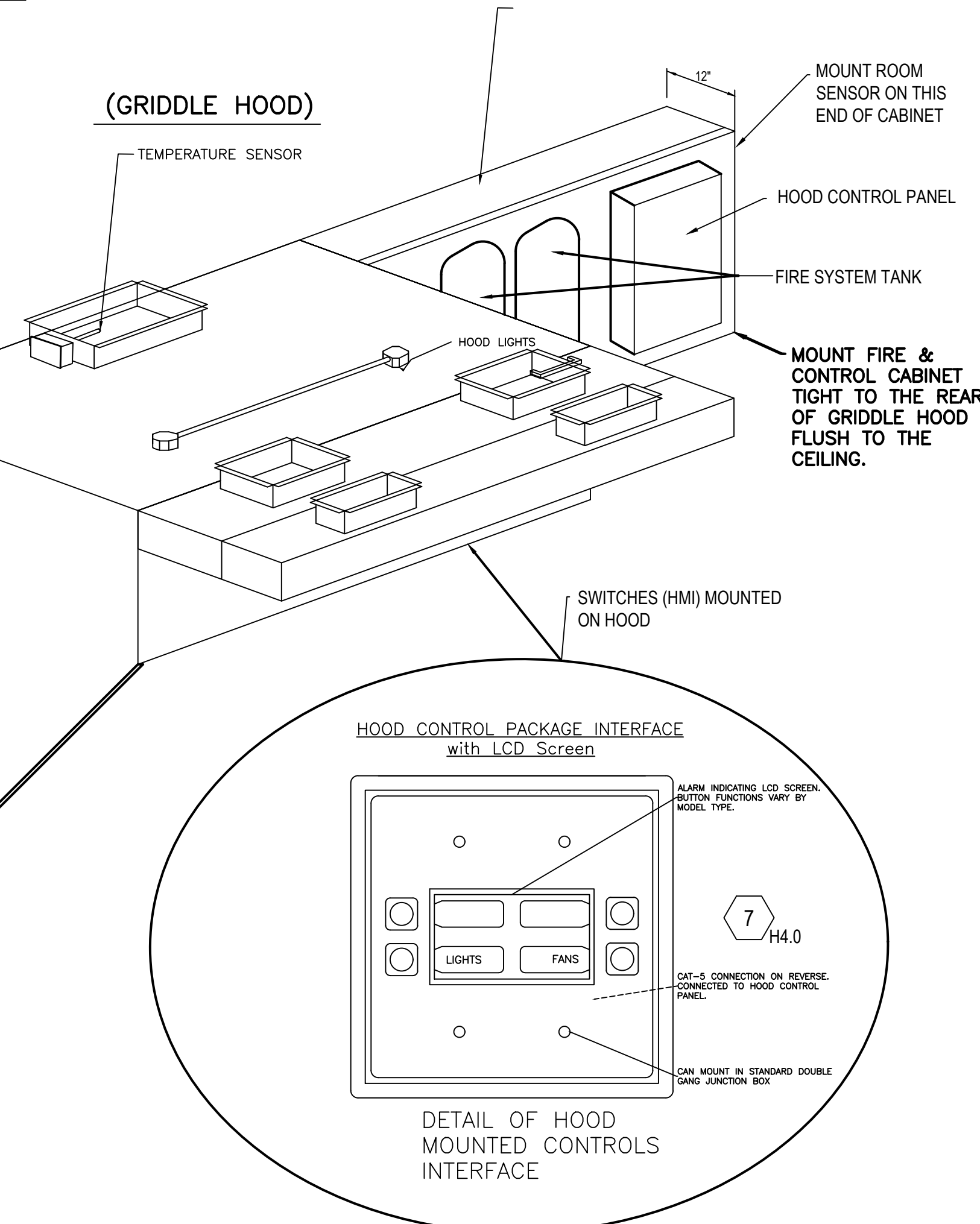
HOOD SYSTEM IS FABRICATED & DESIGNED PER UL-710 STANDARDS



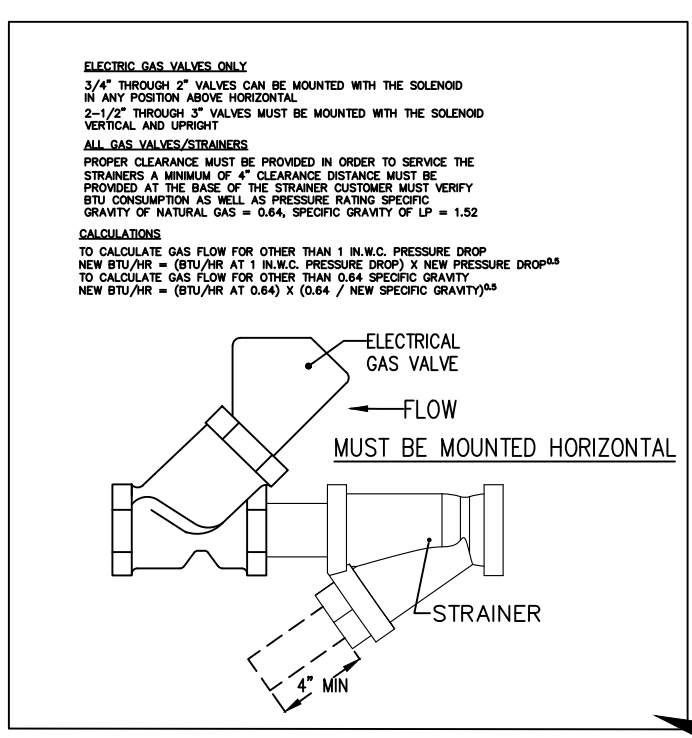
CAPTIVE-AIRE HOODS ARE BUILT IN COMPLIANCE WITH UL 710 AND NFPA 96 AND ARE RECOGNIZED BY ONE OR MORE OF THE FOLLOWING:

ETL SANITATION LISTED
ETL LISTED FILE# 3054804-001

HOOD SYSTEM IS FABRICATED & DESIGNED PER UL-710 STANDARDS



ROOM MOUNT SENSOR MOUNT ON SIDE OF CABINET FACING REAR STORE. SEE HOOD ISOMETRIC DRAWING THIS PAGE.

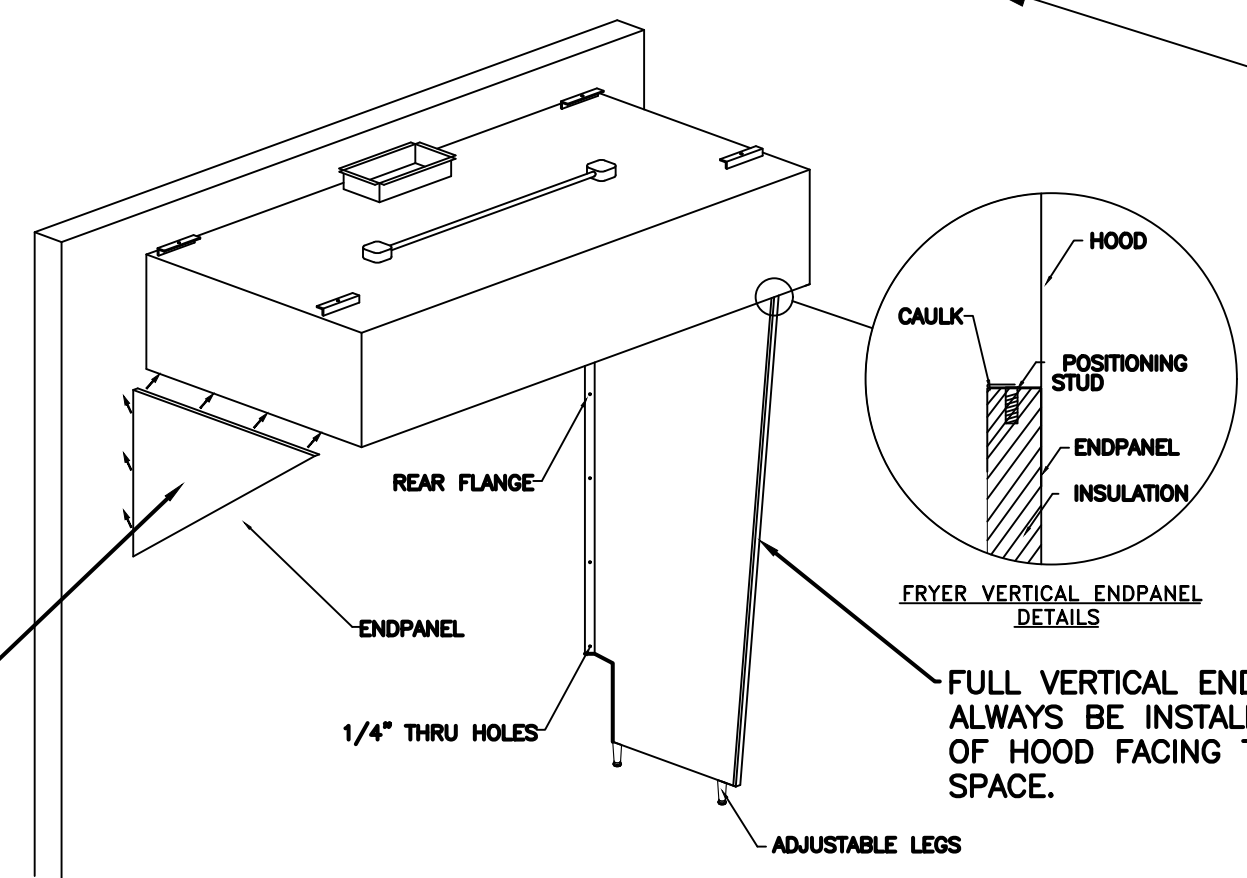


LOCATED IN 48"L X24"H 12" SS CABINET MOUNTED NEXT TO GRILL HOOD

ROOM TEMPERATURE SENSOR MOUNT ON SIDE OF SS 48"L CABINET FACING REAR OF STORE

PROVIDES ROOM OVERRIDE BASED ON TEMPERATURE DIFFERENTIAL BETWEEN THE ROOM AND DUCT. INSTALL ON A WALL IN SPACE BUT NOT DIRECTLY UNDER THE HOOD OR CLOSE TO AN APPLIANCE SO THE READING IS ACCURATE FOR SPACE.

FIRE SYSTEM GAS VALVE MUST BE INSTALLED HORIZONTALLY. 24VAC IS WIRED FROM HOOD CONTROL PANEL TO VALVE (SEE ELECTRICAL DETAILS).



QUARTER END PANEL ON SIDE OF HOOD THAT FACES TO THE FRONT OF THE STORE.

FULL VERTICAL END PANEL TO ALWAYS BE INSTALLED ON THE END OF HOOD FACING TOWARD REAR OF SPACE.

(FRYER HOOD)

REVISIONS

DESCRIPTION	DATE:

CAPTIVE-AIRE
Air Solutions
www.captiveaire.com

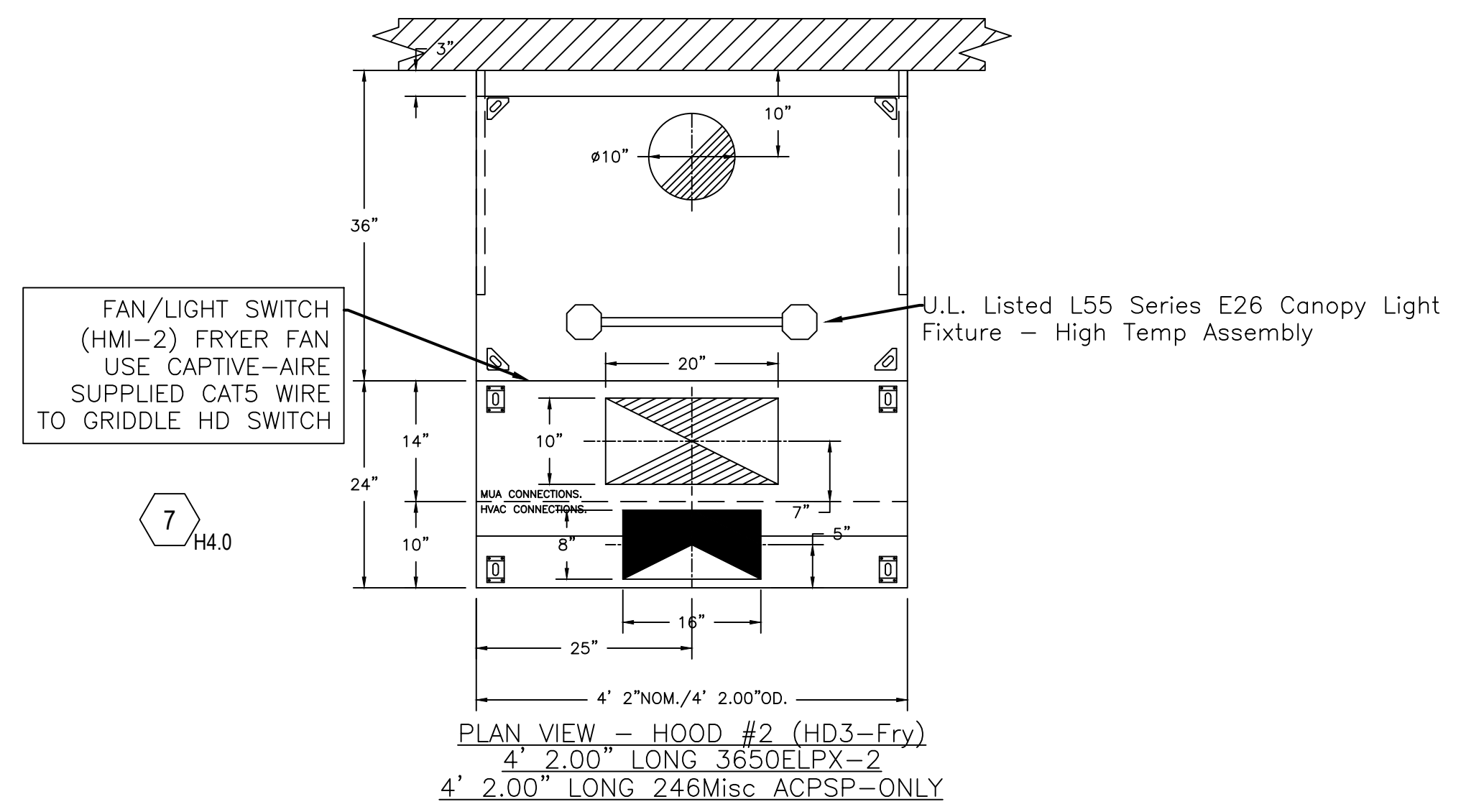
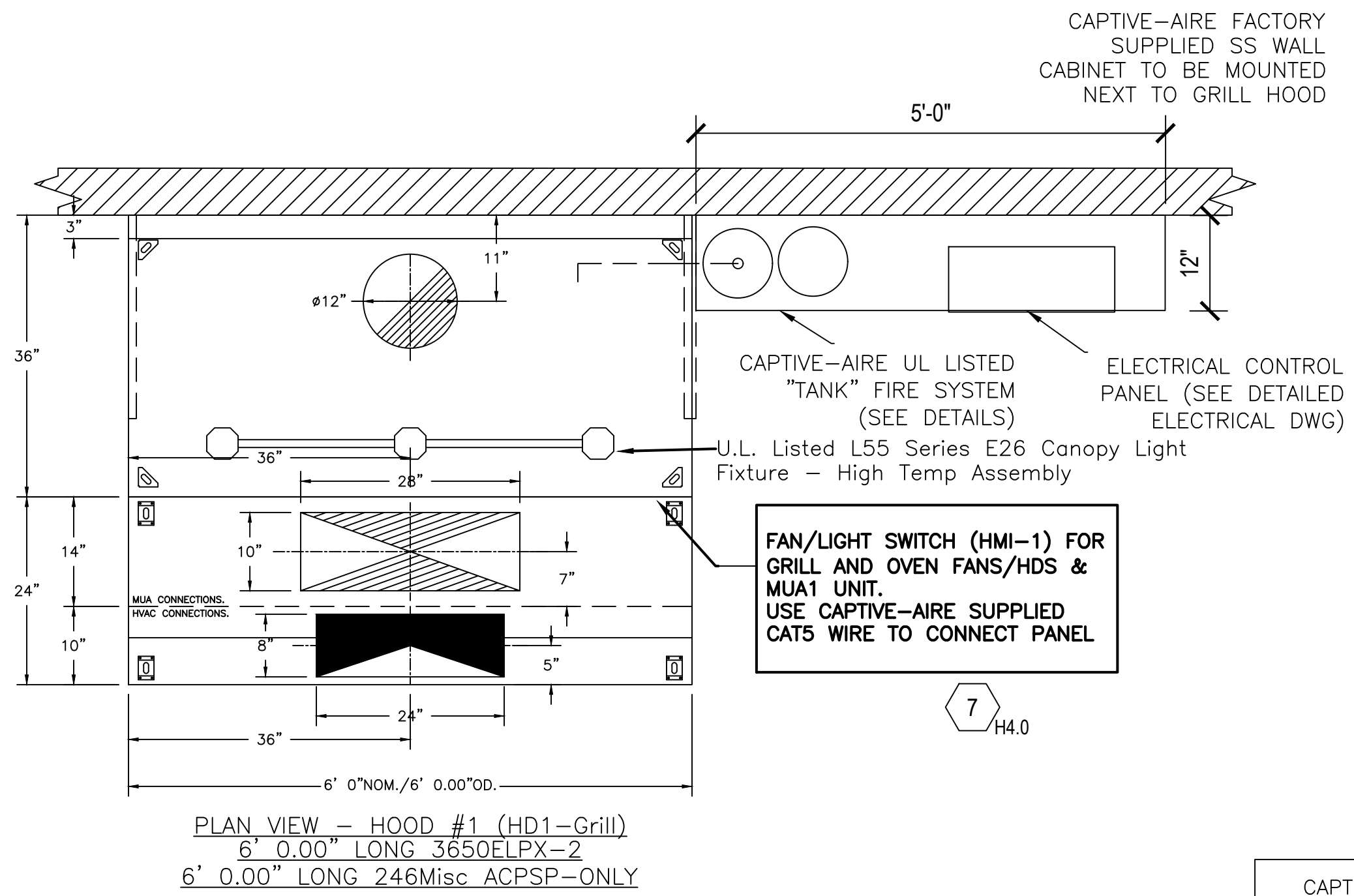
1329 East Kemper Rd., Ste. 4210, Cincinnati, OH, 45246 PHONE: (513) 860-5555

Penn Station V3BL-6
UNION, KY

DATE: 8/14/25
DWG.#: 8171488
DRAWN BY: JMH120
SCALE: N/A
MASTER DRAWING

SHEET NO. H1

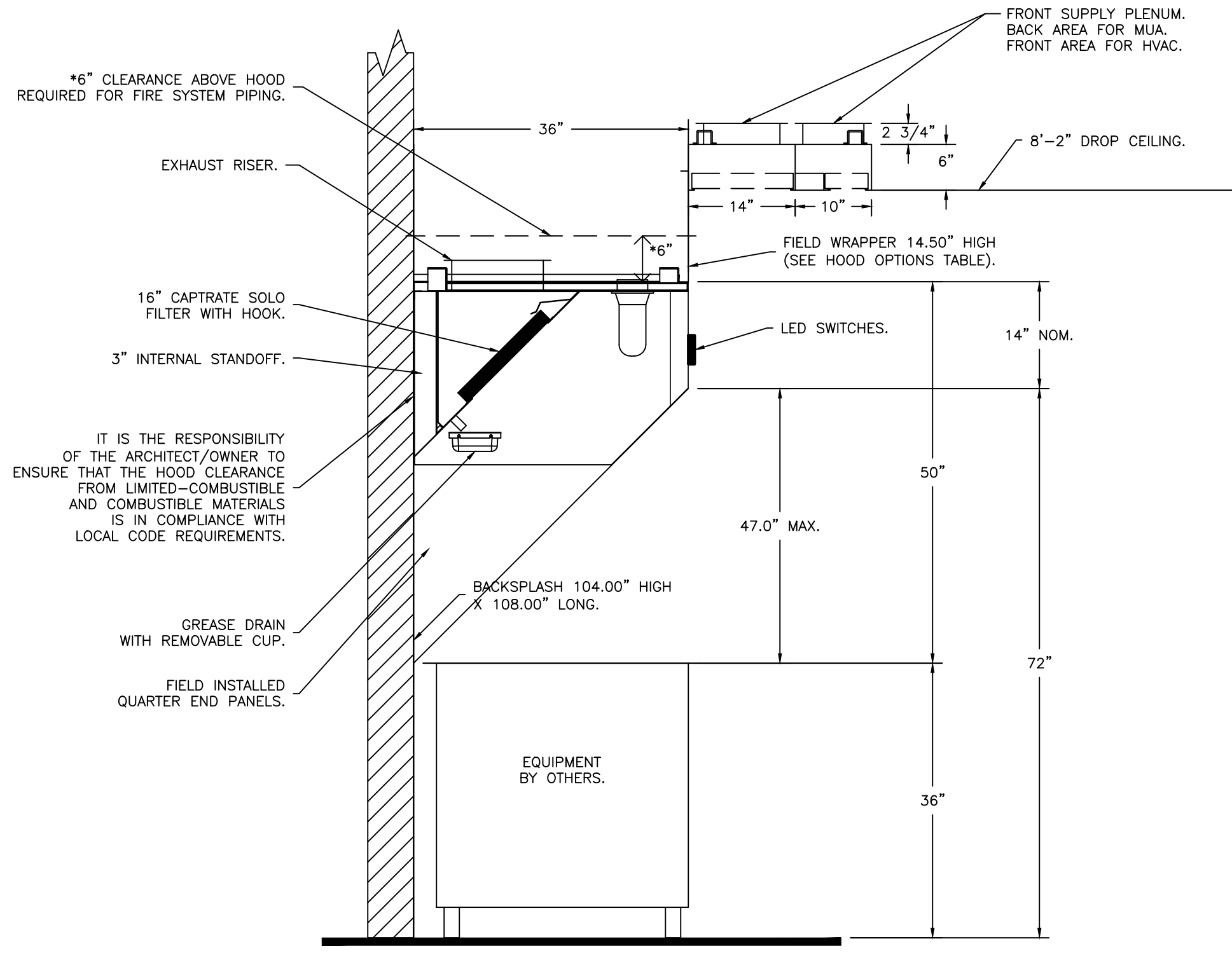
Captiveaire Shop
Drawings
As Noted



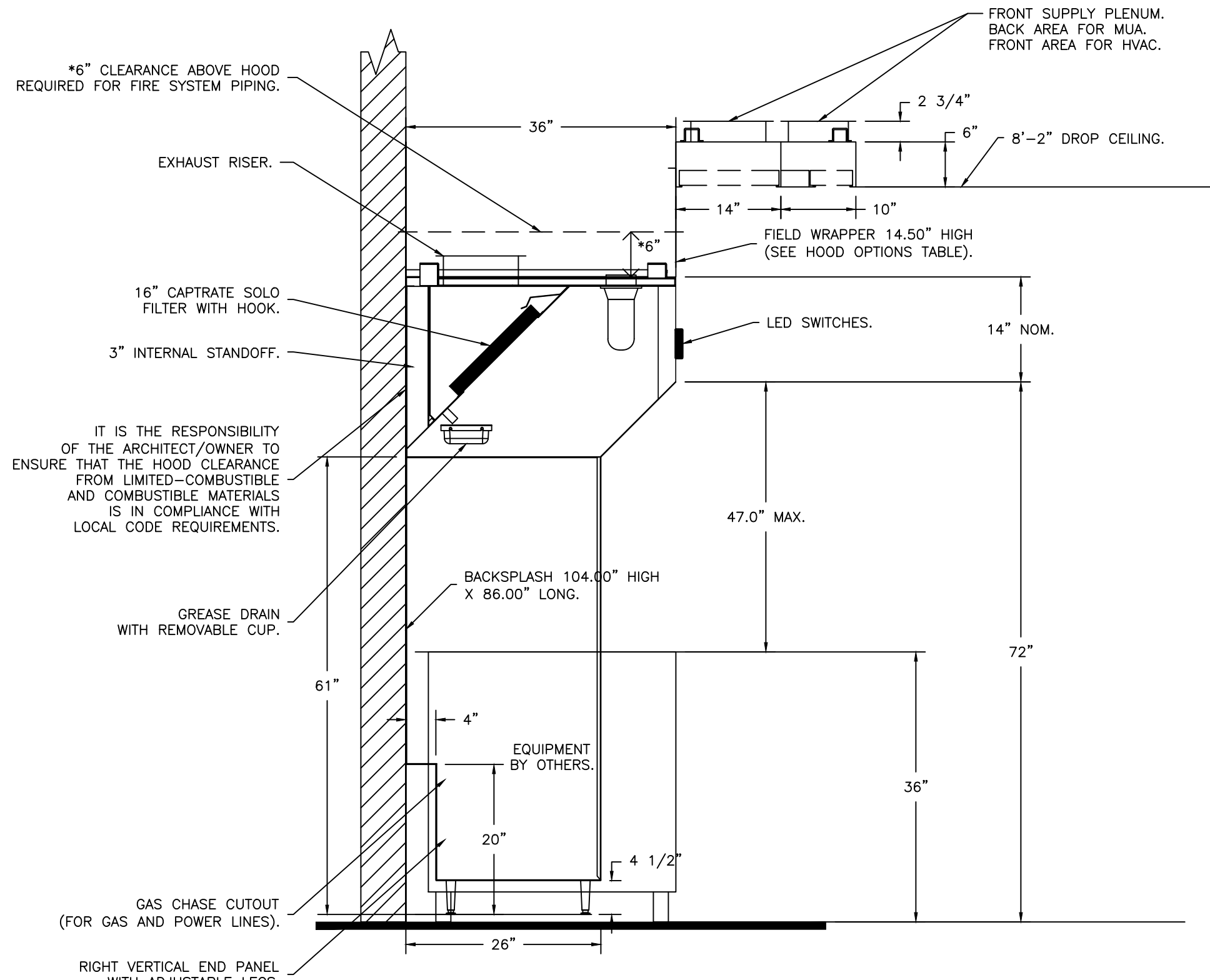
CAPTIVE-AIRE HOODS ARE BUILT IN COMPLIANCE WITH UL 710 AND NFPA 96 AND ARE RECOGNIZED BY ONE OR MORE OF THE FOLLOWING:

ETL SANITATION LISTED
ETL LISTED FILE# 3054804-001

HOOD SYSTEM IS FABRICATED & DESIGNED PER UL-710 STANDARDS



SECTION VIEW - MODEL 3650ELPX-2
HOOD - #1 (HD1-Grill)



SECTION VIEW - MODEL 3650ELPX-2
HOOD - #3 (HD2-Fry)

FOR QUESTIONS, CALL THE CAPTIVE-AIRE (TRI-STATE) OFFICE
1329 E. KEMPER RD. SUITE 4210
PHONE: (513) 860-5555
joe.hertenstein@captiveaire.com

REVISIONS	
DESCRIPTION	DATE

www.captiveaire.com

Air Solutions

1329 East Kemper Rd., Ste. 4210, Cincinnati, OH 45246 PHONE: (513) 860-5555

Penn Station V3BL-6
UNION, KY

DATE: 8/14/25
DWG.#: 8171488
DRAWN BY: JMH120
SCALE: N/A
MASTER DRAWING

SHEET NO. H2

Captiveaire Shop
Drawings

As Noted

EXHAUST FAN INFORMATION - JOB#8171488

FAN UNIT NO	TAG	QTY	FAN UNIT MODEL #	MANUFACTURER	CFM	ESP	RPM	MOTOR ENCL	HP	BHP	PHASE	VOLT	FLA	DISCHARGE VELOCITY	WEIGHT (LBS)	SONES
1	KEF1-GDL	1	EADU85H	ECON-AIR	1150	1.250	1254	TEAO-ECM	0.750	0.3820	1	115	8.9	364 FPM	90	9.7
2	KEF2-FRY	1	EADU85H	ECON-AIR	850	1.250	1189	TEAO-ECM	0.750	0.3260	1	115	8.9	269 FPM	90	8.8

MUA FAN INFORMATION - JOB#8171488

FAN UNIT NO	TAG	QTY	FAN UNIT MODEL #	BLOWER	HOUSING	MIN CFM	DESIGN CFM	ESP	RPM	MOTOR ENCL	HP	BHP	PHASE	VOLT	FLA	MCA	MOCP	WEIGHT (LBS)	SONES
3	HMUA1	1	EA1-D.250-15D	5MF-1-MOD	A1-D.250	1000	1320	0.500	1570	ODP,PREMIUM	1.000	0.5800	3	230	2.8	4.6A	15A	513	12.5

CURB ASSEMBLIES

NO	ON FAN	TAG	R-VALUE	WEIGHT	ITEM	SIZE	LOCATION
1	# 1	KEF1-GDL		49 LBS	CURB	23.000"W X 23.000"L X 30.000"H	VENTED HINGED. GRIDDLE HOOD CURB.
2	# 2	KEF2-FRY		49 LBS	CURB	23.000"W X 23.000"L X 30.000"H	VENTED HINGED. FRYER HOOD CURB.
3	# 3	HMUA1	4.3	63 LBS	CURB	21.000"W X 71.000"L X 16.000"H	INSULATED. HOOD MUA CURB.

1" R4.3 FOIL FACED FIBERGLASS INSULATION. COMPLIES WITH UL/ULC,ASTM, & ASHRAE STANDARDS.

FAN OPTIONS

FAN UNIT NO	TAG	QTY	DESCRIPTION
1	KEF1-GDL	1	GREASE BOX
		1	FAN BASE CERAMIC SEAL - DU/DR85HFA - INSTALLED AT PLANT - FOR GREASE DUCTS
		1	ECM WIRING PACKAGE - PWM SIGNAL FROM ECPM03 PREWIRE (TELCO MOTOR), CCW ROTATION
2	KEF2-FRY	1	2 YEAR PARTS WARRANTY
		1	GREASE BOX
		1	FAN BASE CERAMIC SEAL - DU/DR85HFA - INSTALLED AT PLANT - FOR GREASE DUCTS
3	HMUA1	1	ECM WIRING PACKAGE - PWM SIGNAL FROM ECPM03 PREWIRE (TELCO MOTOR), CCW ROTATION
		1	2 YEAR PARTS WARRANTY
		1	MOTORIZED BACKDRAFT DAMPER FOR A1-D HOUSING - MEETS AMCA CLASS 1A RATING
3	HMUA1	1	LOW FIRE START
		1	INLET PRESSURE GAUGE, 0-35"
		1	MANIFOLD PRESSURE GAUGE, -5 TO 15" WC
		1	SIZE 1 TEMPERED COMMERCIAL DOWN DISCHARGE FOR DIRECT DRIVE AHUS
		1	UNIT MOUNTED VFD FOR USE WITH ECPM03
		1	2 YEAR PARTS WARRANTY
		1	EXTERIOR GAS CONNECTION PROVIDED BY FACTORY WITH QUICK SEAL AND ANTI-ROTATION BRACKET

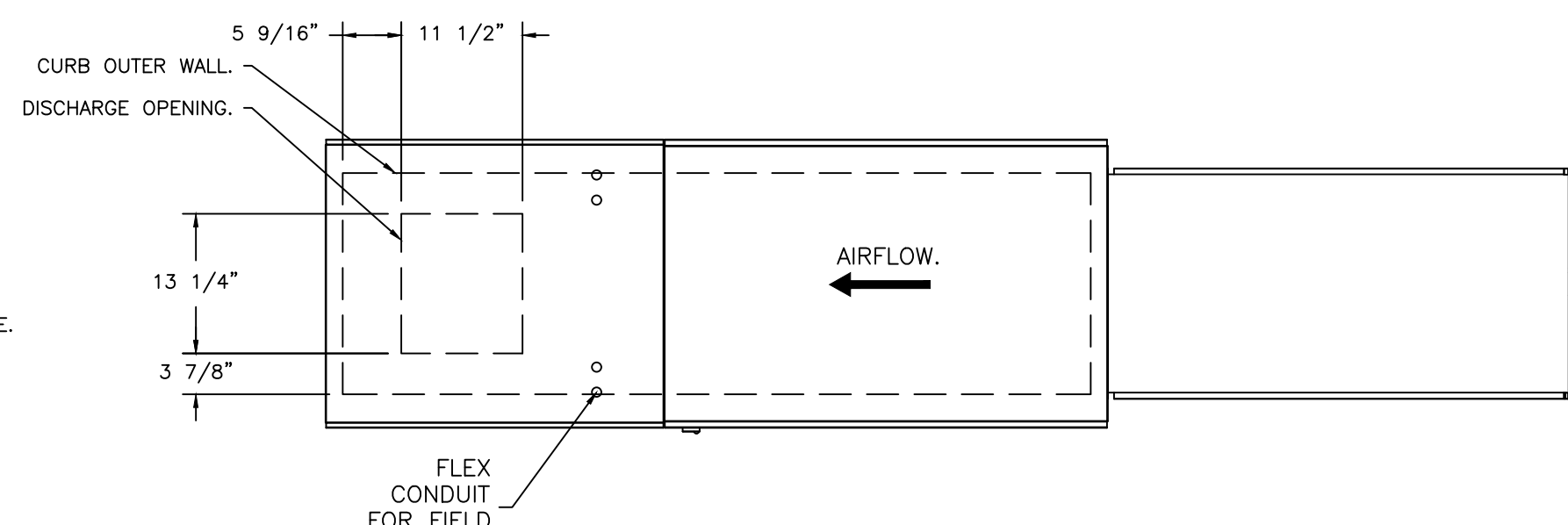
FAN #3 EA1-D.250-15D - HEATER (HMUA1)

- DIRECT GAS FIRED HEATED MAKE UP AIR UNIT WITH 15" MIXED FLOW DIRECT DRIVE FAN.
- INTAKE HOOD WITH EZ FILTERS.
- DOWN DISCHARGE - AIR FLOW RIGHT -> LEFT.
- MOTORIZED BACK DRAFT DAMPER 16" X 18" FOR SIZE 1 STANDARD & MODULAR HEATER UNITS W/EXTENDED SHAFT, STANDARD GALVANIZED CONSTRUCTION, 3/4" REAR FLANGE, LOW LEAKAGE, TFB120S ACTUATOR INCLUDED.
- LOW FIRE START. ALLOWS THE BURNER CIRCUIT TO ENERGIZE WHEN THE MODULATION CONTROL IS IN A LOW FIRE POSITION.
- GAS PRESSURE GAUGE, 0-35", 2.5" DIAMETER, 1/4" THREAD SIZE.
- GAS PRESSURE GAUGE, -5 TO +15 INCHES WC, 2.5" DIAMETER, 1/4" THREAD SIZE.
- DOWN DISCHARGE CONSTRUCTION FOR SIZE 1 DIRECT DRIVE AHUS.
- UNIT MOUNTED VFD FOR USE WITH ECPM03.
- HINGED DOUBLE WALL INSULATED DOOR ASSEMBLY (BURNER/BLOWER SECTION).
- EXTERIOR GAS CONNECTION PROVIDED BY FACTORY WITH QUICK SEAL AND ANTI-ROTATION BRACKET.
- 2 YEAR PARTS WARRANTY.

*NOTE: SUPPLY DUCT MUST BE INSTALLED TO MEET SMACNA STANDARDS. A MINIMUM STRAIGHT DUCT LENGTH MUST BE MAINTAINED DOWNSTREAM OF UNIT DISCHARGE AS OUTLINED IN AMCA PUBLICATION 201. WHEN USING RECTANGULAR DUCTWORK, ELBOWS MUST BE RADIUS THROAT, RADIUS BACK WITH TURNING VANES. FLEXIBLE DUCTWORK AND SQUARE THROAT/SQUARE BACK ELBOWS SHOULD NOT BE USED. ANY TRANSITION AND/OR TURNS IN THE DUCTWORK WILL CAUSE SYSTEM EFFECT. SYSTEM EFFECT WILL DRASTICALLY INCREASE STATIC PRESSURE AND REDUCE AIRFLOW. DO NOT RELY ON UNIT TO SUPPORT DUCT IN ANY WAY. FAILURE TO PROPERLY SIZE DUCTWORK MAY CAUSE SYSTEM EFFECTS AND REDUCE PERFORMANCE OF THE EQUIPMENT. SUGGESTED STRAIGHT DUCT SIZE IS 14" X 14".

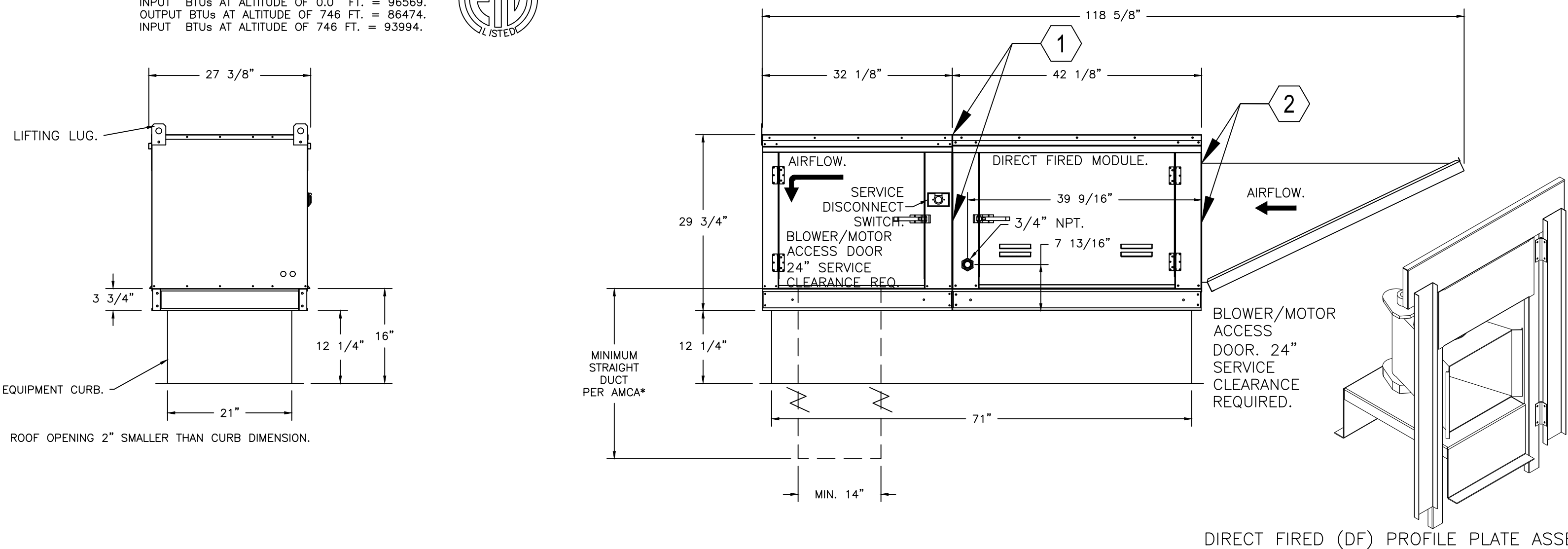
SUPPLY SIDE HEATER INFORMATION:

WINTER TEMPERATURE = 12°F. TEMP. RISE = 63°F.
 BTUs CALCULATED OFF ACTUAL AIR DENSITY.
 OUTPUT BTUs AT ALTITUDE OF 0.0 FT. = 88843.
 INPUT BTUs AT ALTITUDE OF 0.0 FT. = 96569.
 OUTPUT BTUs AT ALTITUDE OF 746 FT. = 86474.
 INPUT BTUs AT ALTITUDE OF 746 FT. = 93994.



GAS FIRED MAKE-UP AIR UNIT(S)

FAN UNIT NO	TAG	INPUT BTUs	OUTPUT BTUs	TEMP RISE	REQUIRED INPUT GAS PRESSURE	GAS TYPE	BURNER EFFICIENCY(%)
3	HMUA1	93993	86474	63°F	7 IN. W.C. - 14 IN. W.C.	NATURAL	92



MUA NOTES:

- URETHANE CAULK HORIZ. & VERT. CONNECTIONS BETWEEN BLOWER ASSEMBLY & CONTROL MODULE.
- URETHANE CAULK HORIZ. & VERT. CONNECTIONS BETWEEN CONTROL MODULE & OUTSIDE AIR HOOD.

FOR QUESTIONS, CALL THE CAPTIVE-AIRE (TRI-STATE) OFFICE
 1329 E. KEMPER RD., SUITE 4210
 PHONE: (513) 860-5555
 joe.hertenstein@captiveaire.com

AIR BALANCE SCHEDULE			
TAG	ROOMS SERVED	O.A. CFM	EXHAUST CFM
KEF-1	HD1 (GRIDDLE)		- 1150
KEF-2	HD2 (FRYER)		- 850
MUA-1	HDS 1 & 2	+ 1320	
TLT EXH	TOILETS		- 150
RTUS	BUILDING	+ 855 (MIN.)	
NET		+25 CFM (MIN.)	

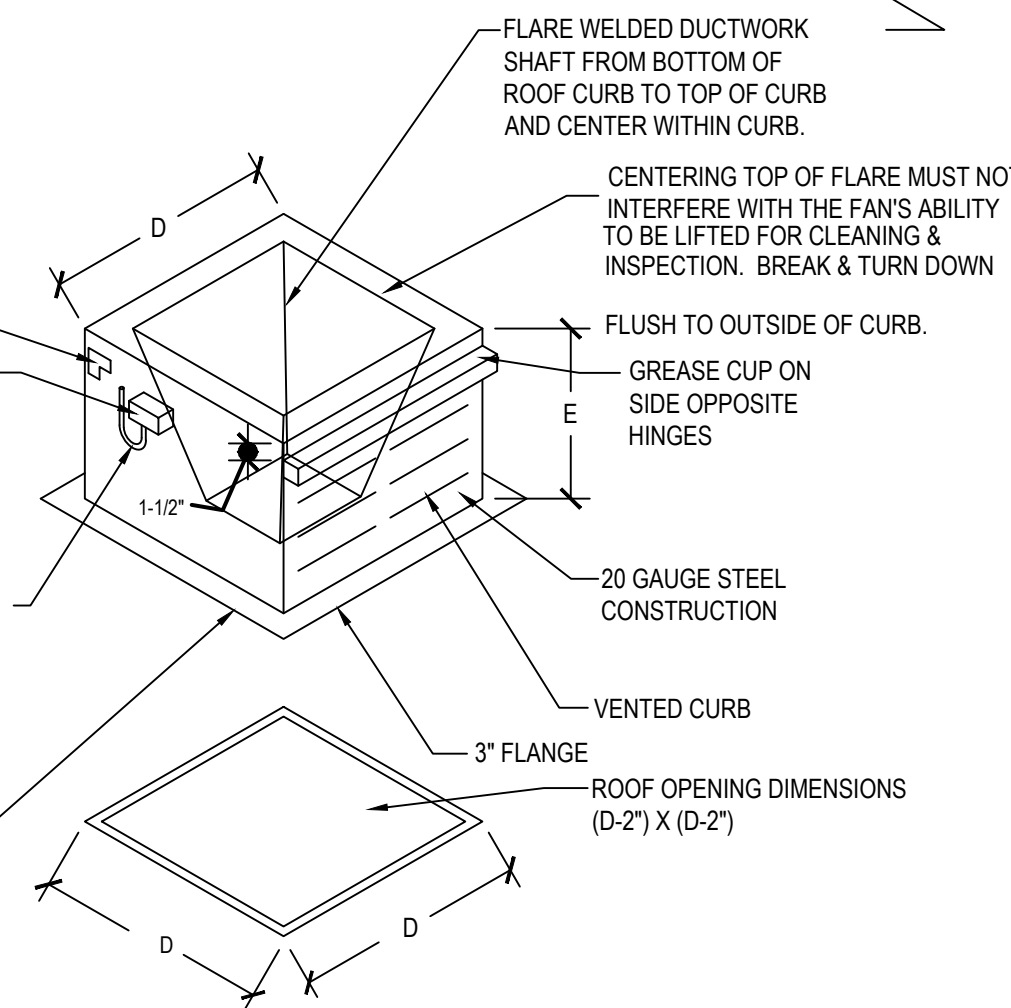
KITCHEN TO MAINTAIN A SLIGHTLY NEGATIVE PRESSURE OVERALL BUILDING PRESSURE TO BE BETWEEN -0.02" TO +0.02" WC PER IMC COMMENTARY RECOMMENDATIONS

TYPICAL ROOF CURB DETAIL

CONTRACTOR, USE S.S. BOLTS FOR ATTACHING CURB AND EXHAUST FAN TO CURB HINGE (DO NOT USE SCREWS). MAKE SURE THAT HINGE KIT IS INSTALLED PRIOR TO BOLTING ON THE FAN.

INSTALL SEAL-TIGHT ELECTRICAL FEED WITH ENOUGH SLACK TO 'SWAG' 3" MIN. AND STILL ALLOW FULL OPERATION OF THE FAN HINGE. ALL ELECTRICAL CONDUITS & DISCONNECT ON FAN TO BE ON THE SAME SIDE AS THE FAN HINGES ON CURB TO ALLOW FAN TO BE TILTED BACK

MOUNT ROOF CURBS DIRECTLY TO ROOF DECK, (TYP. ALL HVAC CLEANING. SCREW BOTTOM FLANGE OF CURB INTO EACH HIGH RIB OF ROOF DECK WHEN INSTALLING.



FANS #1 (KEF1-GDL), #2 (KEF2-FRY) - EADU85H EXHAUST FAN

FEATURES:

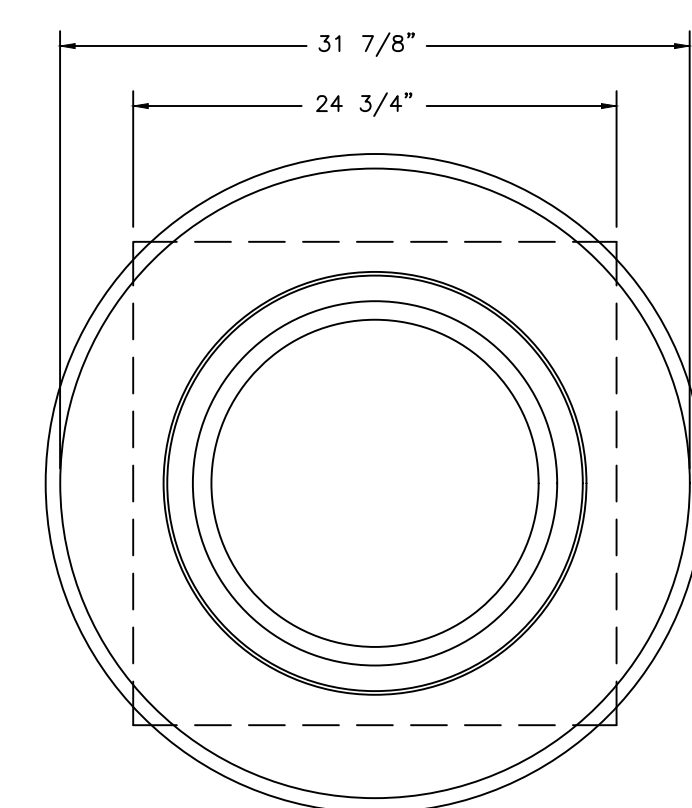
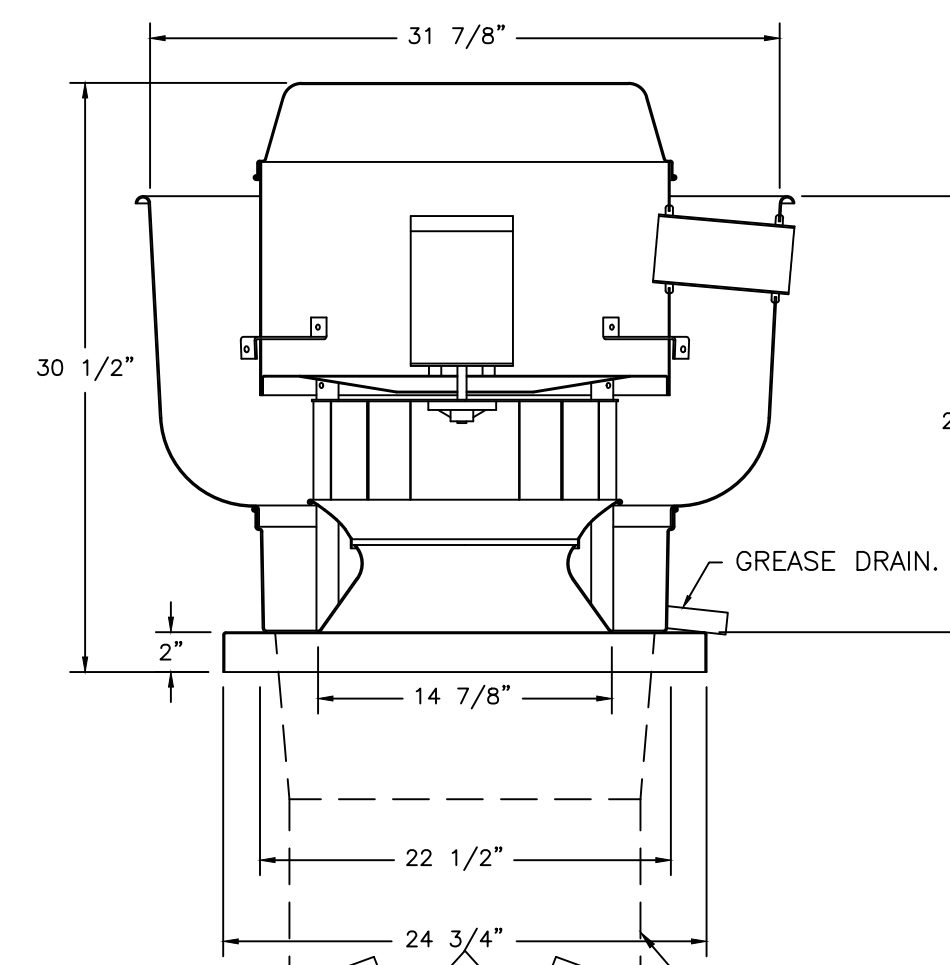
- DIRECT DRIVE CONSTRUCTION (NO BELTS/PULLEYS).
- ROOF MOUNTED FANS.
- RESTAURANT MODEL.
- UL705 AND UL762 AND ULC-S645
- VARIABLE SPEED CONTROL.
- INTERNAL WIRING.
- THERMAL OVERLOAD PROTECTION (SINGLE PHASE).
- HIGH HEAT OPERATION 300°F (149°C).
- GREASE CLASSIFICATION TESTING.
- NEMA 3R SAFETY DISCONNECT SWITCH.

NORMAL TEMPERATURE TEST
 EXHAUST FAN MUST OPERATE CONTINUOUSLY WHILE EXHAUSTING AIR AT 300°F (149°C) UNTIL ALL FAN PARTS HAVE REACHED THERMAL EQUILIBRIUM, AND WITHOUT ANY DETERIORATING EFFECTS TO THE FAN WHICH WOULD CAUSE UNSAFE OPERATION.

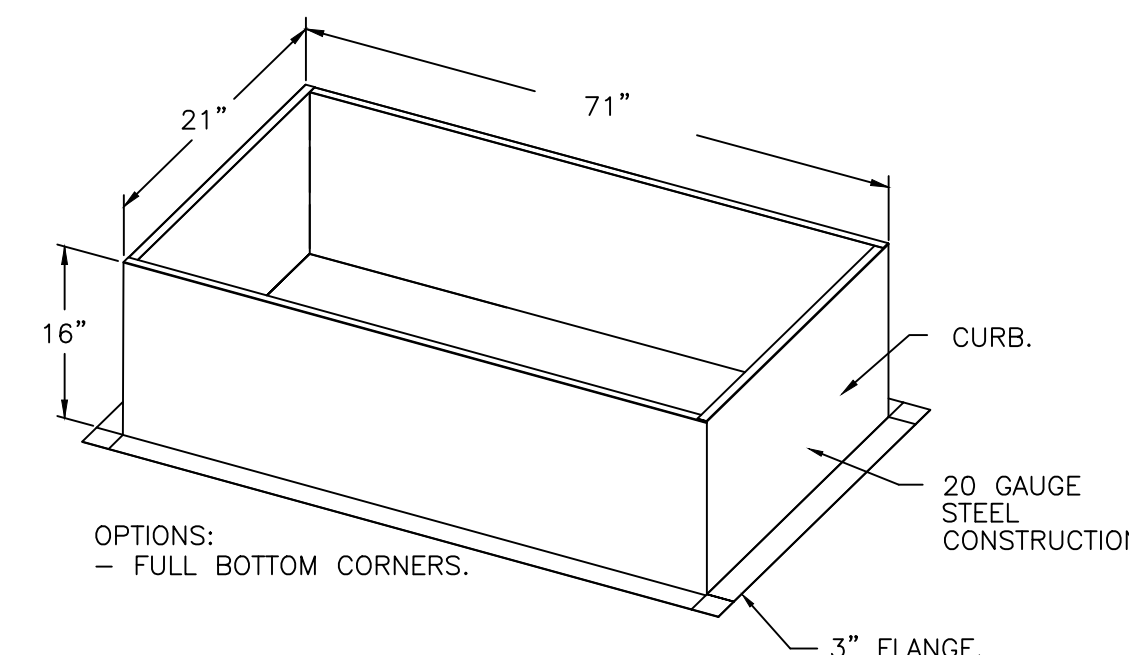
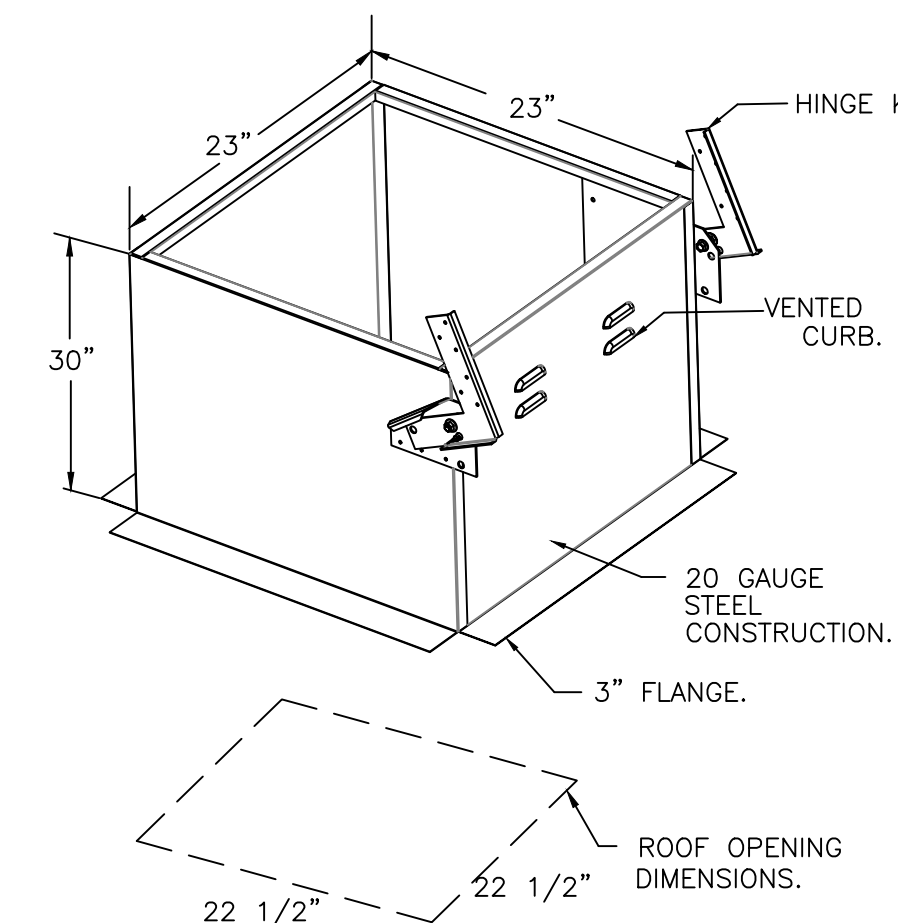
ABNORMAL FLARE-UP TEST
 EXHAUST FAN MUST OPERATE CONTINUOUSLY WHILE EXHAUSTING BURNING GREASE VAPORS AT 600°F (316°C) FOR A PERIOD OF 15 MINUTES WITHOUT THE FAN BECOMING DAMAGED TO ANY EXTENT THAT COULD CAUSE AN UNSAFE CONDITION.

OPTIONS

- GREASE BOX.
- FAN BASE CERAMIC SEAL - DU/DR85HFA
- INSTALLED AT PLANT - FOR GREASE DUCTS.
- ECM WIRING PACKAGE - PWM SIGNAL FROM ECPM03 PREWIRE (TELCO MOTOR), CCW ROTATION.
- 2 YEAR PARTS WARRANTY.



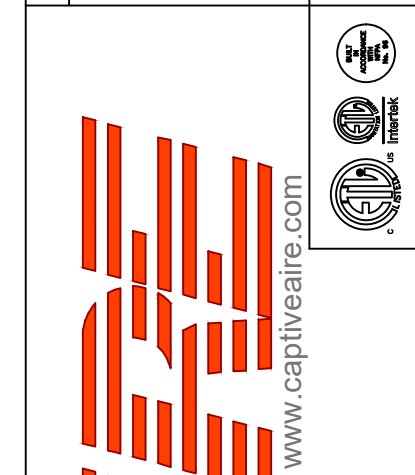
TOP VIEW



- OPTIONS:
 - FULL BOTTOM CORNERS.

REVISIONS

DESCRIPTION	DATE



Air Solutions

1329 East Kemper Rd., Ste. 4210, Cincinnati, OH, 45246 PHONE: (513) 860-5555

Penn Station V3BL-6

UNION, KY

DATE: 8/14/25

DWG.#:
8171488

DRAWN BY: JMH120

SCALE:
N/A

MASTER DRAWING

SHEET NO.
H3

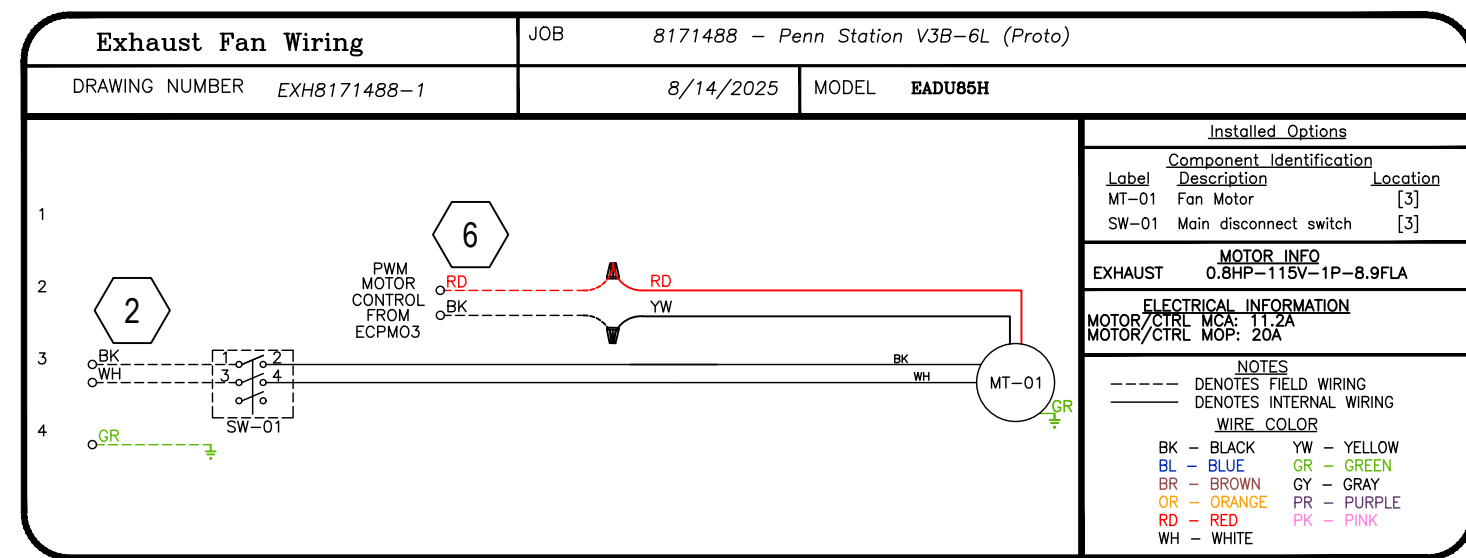
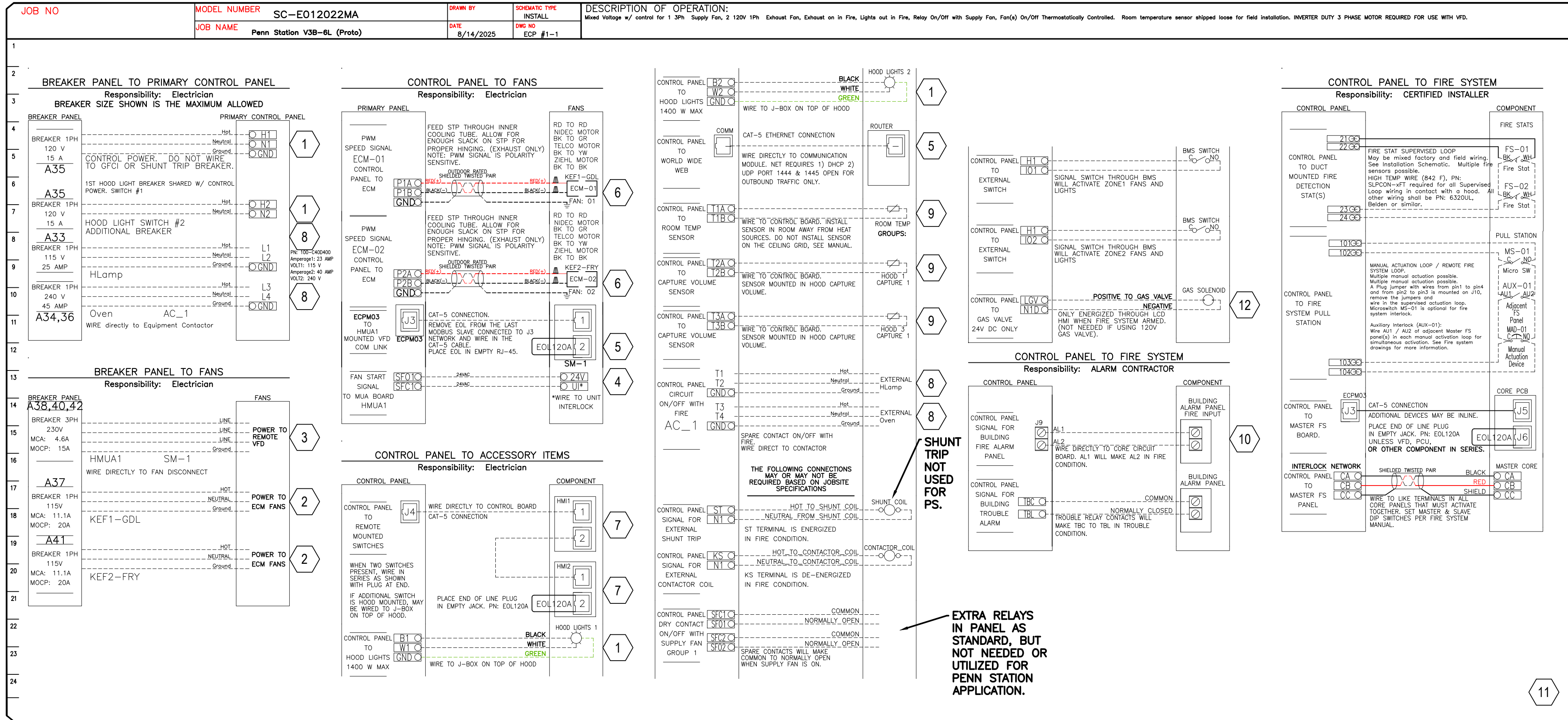
Captiveaire Shop
Drawings

As Noted

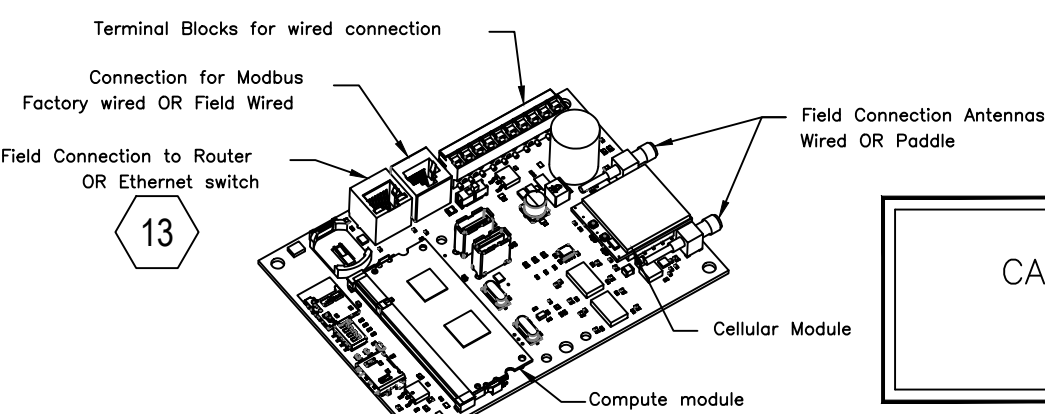
ELECTRICAL PACKAGE - JOB#8171488

NO	TAG	PACKAGE #	LOCATION	SWITCHES		OPTION	FANS CONTROLLED					
				LOCATION	QUANTITY		FAN TAG	TYPE	Φ	HP	VOLT	FLA
1	ECP1	SC-E012022MA	WALL UTILITY CABINET RIGHT	FACE MOUNT RIGHT SIDE OF HOOD	2 LIGHT	SMART CONTROLS THERMOSTATIC CONTROL W/ RELAY ON/OFF WITH SUPPLY	KEF1-GDL	EXHAUST	1	0.750	115	8.9
				HOOD # 1	2 FAN		KEF2-FRY	EXHAUST	1	0.750	115	8.9
							HMUA1	SUPPLY	3	1.000	230	2.8

(HOOD CONTROL PANEL-MOUNTED NEXT TO GRIDDLE HOOD)



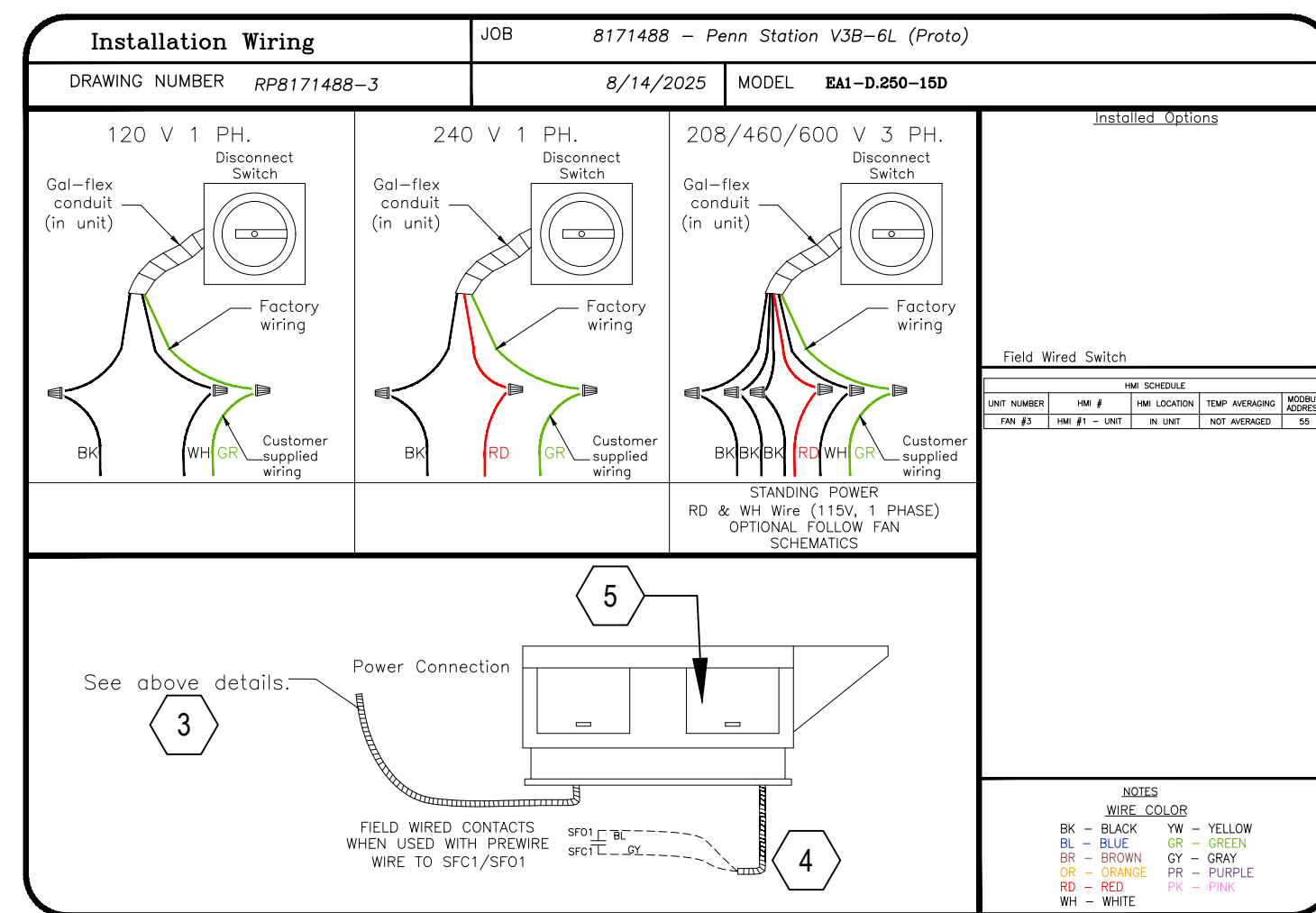
TYPICAL - BOTH EXHAUST FANS



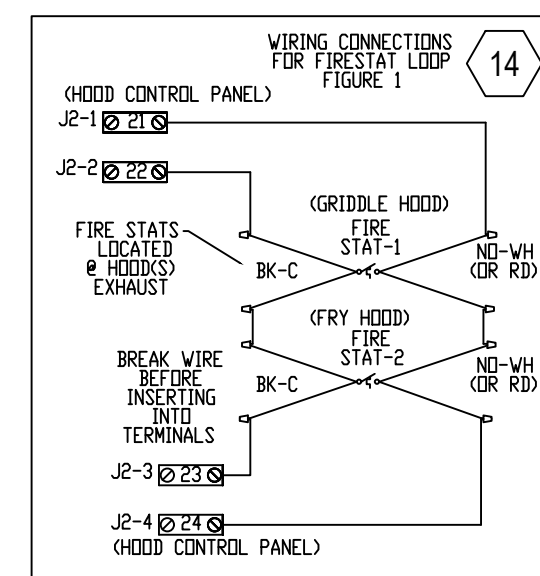
FOR QUESTIONS, CALL THE CAPTIVE-AIRE (TRI-STATE) OFFICE
1329 E. KEMPER RD. SUITE 4210
PHONE: (513) 860-5555
joe.hertenstein@captiveaire.com

CASlink Monitor and Control

- Hood control panel to support communications to cloud-based Building Management System.
- Hood Control Panel to allow cloud-based Building Management System to monitor real time parameters outlined as MONITOR in the points list.
- Hood Control Panel to allow cloud-based Building Management System to control parameters outlined as CONTROL in the points list.
- Hood Control Panel to allow cloud-based Building Management System to implement SYSTEM ECONOMIZER control strategies for fully integrated Building Management.



MAKE-UP AIR UNIT HMUA-1



HOOD SYSTEM WIRING INSTRUCTIONS BY ELECTRICIAN

- 1) WIRE 120V, 1 PHASE CIRCUIT FROM BUILDING PANEL TO HOOD CONTROL PANEL TO BE USED FOR CONTROLS & LIGHT CIRCUIT.
- 2) WIRE 120V, 1 PHASE CIRCUITS FROM BUILDING PANEL TO EACH EXHAUST FAN (SEPARATELY) TO CAPTIVE-AIRE SUPPLIED FAN EXTERNAL DISCONNECTS (TYPICAL OF ALL EXHAUST FANS).
- 3) WIRE 208V, 3 PHASE CIRCUIT FROM BUILDING PANEL TO MAKE UP AIR FAN ON ROOF & TIE INTO WHIP OFF DISCONNECT SWITCH WITH GROUND.
- 4) RUN A 18-4 LOW VOLTAGE WIRE FOR 24V CIRCUIT FROM SF01 & SFC1 OF CONTROL PANEL TO THE MAKE UP AIR FOR HEATER CONTROLS J16 PINS 5&6. ALSO INSTALL LOW VOLTAGE FROM D3/D7 OF HEATER TO IL1A & IL1B OF CONTROL PANEL.
- 5) USING THE CAT5 CABLE SUPPLIED BY CAPTIVE-AIRE, WIRE DIRECTLY TO COMMUNICATION MODULE.
- 6) THERE IS A RED & BLACK PAIR OF TWISTED WEATHERPROOF WIRE ALREADY FACTORY CONNECTED TO EACH MOTOR OF EACH EXHAUST FAN LOCATED UNDER THE FAN HOUSING LID. RUN EACH WIRE THROUGH MOTOR BREATHER TUBE & THEN DOWN TO HOOD CONTROL PANEL NEXT TO GRILL HOOD. TIE EACH ONE INTO P#A & P#B RESPECTIVELY FOR EACH FAN AS SHOWN ON SCHEMATIC TO THE LEFT.
- 7) WIRE THE CAT5 CABLE SUPPLIED BY CAPTIVE AIRE FROM J4 PLUG TO THE JUNCTION BOX LOCATED ON TOP OF THE GRILL HOOD & PLUG IN FOR GRILL HD SWITCH (HMI). THEN WIRE THE OTHER CAT5 CABLE FROM THE GRILL HOOD JUNCTION BOX TO THE FRY HOOD JUNCTION BOX ON TOP OF HOOD & PLUG INTO J PLUG FOR THE FRY HOOD SWITCH (HMI). YOU ARE WIRING THE SWITCHES (HMI PANELS) IN SERIES. SEE H1.0, H2.0
- 8) WIRE THE 120V 1 PHASE FRYER(S)/WARMER CIRCUITS & THE 240V 1 PHASE ALT. ELEC. OVEN CIRCUIT FROM BUILDING PANEL TO HOOD CONTROL PANEL TO THE RESPECTIVE 120V & 240V CONTACTORS & THEN FROM HOOD CONTROL PANEL TO THE RESPECTIVE WALL OUTLETS.
- 9) USING THE WHITE WIRE SUPPLIED BY CAPTIVE-AIRE WIRE FROM EACH HOOD DUCT SENSOR LOCATED IN HOOD EXHAUST COLLAR OR TOP OF HOOD IN JUNCTION BOX TO HOOD CONTROL PANEL & TIE INTO T2A & T2B, T3A & T3B, T4A & T4B. THEN INSTALL WHITE TEMP SENSOR SUPPLIED BY CAPTIVE AIRE ON RIGHT SIDE OF HOOD SS PANEL & WIRE TO T1A & T2B.
- 10) IF BUILDING ALARM IS PROVIDED WITH BUILDING THEN WIRE DIRECTLY INTO AL1 & AL2 OF THE CONTROL PANEL PER THE BUILDING FIRE PANEL REQUIREMENTS TO RECEIVE AN ALARM SIGNAL UPON FIRE SYSTEM ACTUATION. IF NO BUILDING ALARM, THEN SUPPLY A HORN/LIGHT STROBE & MOUNT IN SIGHT OF HOODS AND TIE DIRECTLY INTO TR2 & C2 OF CONTROL PANEL.
- 11) INSTALL LIGHT BULBS IN HOODS SUPPLIED BY OWNER. VERIFY ALL FANS & LIGHTS POWER UP. CHECK ROTATION FOR SUPPLY FAN. ANY QUESTIONS CONTACT JOE AT 513-860-5555. 5 BULBS REQ'D - SUPPLIED IN GENERAL LIGHTING PACKAGE.
- 12) WIRE POWER FROM LGV & N1D 24VAC FROM CONTROL PANEL TO CAS SUPPLIED ELECTRIC GAS VALVE FOR GAS SHUT OFF. MAKE SURE ELECTRIC GAS VALVE IS INSTALLED HORIZONTALLY TO WORK PROPERLY.
- 13) PLUG A CAT5 WIRE INTO COMMUNICATION MODULE TO ROUTER IS RECOMMENDED TO MONITOR THE FIRE SYSTEM 24/7.
- 14) RUN FIRESTAT WIRE FROM HOOD PANEL TO GRILL HD, THEN FRY HD, FINALLY BACK TO HOOD PANEL. WIRE BY CAPTIVE-AIRE.

REVISIONS

NO	DESCRIPTION	DATE
1		
2		
3		
4		
5		
6		
7		
8		
9		
10		
11		
12		
13		
14		
15		
16		
17		
18		
19		
20		
21		
22		
23		
24		

DATE: 8/14/25

DWG.#: 8171488

DRAWN BY: JMH120

SCALE: N/A

MASTER DRAWING

SHEET NO.: H4

DATE: 8/14/25

DWG.#: 8171488

DRAWN BY: JMH120

SCALE: N/A

MASTER DRAWING

SHEET NO.: H4

CAPTIVE-AIRE

www.captiveaire.com

Air Solutions

1329 East Kemper Rd., Ste. 4210, Cincinnati, OH, 45246 PHONE: (513) 860-5555

Penn Station V3BL-6

UNION, KY