

SDV Job #: 8409244 - Penn Station V3B-6L (Union, KY)**Service Region:** 334 - Louisville, KY Service**Service Person:** Tom Stone**Customer Number:** 1136898**Customer Name:** Region 120 - AIR SOLUTIONS**Address:**
PENN STATION
U.S. Highway 42
UNION, KY 41091**Region Job #:** 8225907**Region Job Name:** Penn Station V3B-6L (Union, KY)**Sales Region:** 120 - Air Solutions**Sales Person:** Joe Hertenstein**Created By:** Tom Stone**Creation Date:** 2/26/2026 10:56 AM**Last Modified By:** Justin Fairchild**Last Modified Date:** 2/27/2026 11:43 AM**Dining Room Pressure:** 0**Kitchen Pressure:** 0**Hours On Job:** 0**Extra Hours:** 0**Completed:** Yes**Completed By:** Justin Fairchild**Completion Date:** 2/27/2026 11:43 AM**Job Site Meeting**

NONE

Hood Group 1**Exhaust CFM:** Design = 1150 Initial = 1094 Final = 1244 (108.2% of design)**Hood 1 (HD1-Grill) (HD1-Grill)****Model:** 3650ELPX-2**Length:** 6' 0"**Exhaust CFM:** Design = 1150
(108.2% of design)

Initial = 1094

Final = 1244

Installation**Other Notes:**

N/A



Hung Using appropriate material to safely secure hood. Design: **Yes** Actual: **Yes**

Other Notes:

Contractors did a good job.

COOKING EQUIPMENT ON AND OPERATING Design: **Yes** Actual: **No**

COOKING EQUIPMENT INSTALLED AS CLOSE TO BACK WALL AS POSSIBLE Design: **Yes** Actual: **Yes**

END PANELS INSTALLED CORRECTLY Design: **Yes** Actual: **Yes**

Smoke Test Performed on all Hoods? Upload Video Design: **Yes** Actual: **Yes**

Other Notes:

N/A

See attachment(s): [202602261153444638.mp4]

Measure the Front lower edge of the Hood to the Floor. (AFF) Design: **72** Actual: **72**

Are there combustibles within 18" of the Hood? Design: **No** Actual: **No**

Filters

Type: Captrate Solo

Filter 1 Size: 16x16 Initial Velocity: 150 fpm Final Velocity: 179 fpm
Initial CFM: 271 Final CFM: 324 Fan: #1 - EADU85H (KEF1-GDL)

Filter 2 Size: 16x16 Initial Velocity: 150 fpm Final Velocity: 169 fpm
Initial CFM: 271 Final CFM: 306 Fan: #1 - EADU85H (KEF1-GDL)

Filter 3 Size: 16x16 Initial Velocity: 151 fpm Final Velocity: 169 fpm
Initial CFM: 273 Final CFM: 306 Fan: #1 - EADU85H (KEF1-GDL)

Filter 4 Size: 16x16 Initial Velocity: 154 fpm Final Velocity: 170 fpm
Initial CFM: 279 Final CFM: 308 Fan: #1 - EADU85H (KEF1-GDL)

Hood Group 2

Exhaust CFM:	Design = 0	Initial = 0	Final = 0	(0% of design)
Supply CFM:	Design = 775	Initial = 920	Final = 918	(118.5% of design)

Hood 2 (HD1-PSP) (HD1-PSP)

Model:	246Misc ACPSP-ONLY	Length:	6' 0"	
Exhaust CFM:	Design = 0	Initial = 0	Final = 0	(0% of design)

Installation

Hung Using appropriate material to safely secure hood.	Design: Yes	Actual: Yes
COOKING EQUIPMENT ON AND OPERATING	Design: Yes	Actual: Yes
COOKING EQUIPMENT INSTALLED AS CLOSE TO BACK WALL AS POSSIBLE	Design: Yes	Actual: Yes
Smoke Test Performed on all Hoods? Upload Video	Design: Yes	Actual: Yes
Measure the Front lower edge of the Hood to the Floor. (AFF)	Design: 80	Actual: 80
Are there combustibles within 18" of the Hood?	Design: No	Actual: No

Supply

Supply CFM: (118.5% of design)	Design = 775	Initial = 920	Actual = 918
	Fan: #3 - EA1-D.250-15D (HMUA1)		
AC CFM: (0% of design)	Design = 0	Initial = 0	Actual = 0

PSP 1

Orientation:	Front	Length:	6' 0"	Width:	14"
Banks: 1	Blanks: 1				
CFM: (0% of design)	Design = 775	Initial = 920	Final = 918		
Velocity: (0% of design)	Design = 130	Initial = 0	Final = 0		
AC CFM: (0% of design)	Design = 465	Initial = 0	Final = 0		
AC Velocity: (0% of design)	Design = 0	Initial = 0	Final = 0		

Readings:

1: Initial: 169 fpm, Final: 172 fpm	2: Initial: 156 fpm, Final: 152 fpm
3: Initial: 145 fpm, Final: 152 fpm	4: Initial: 102 fpm, Final: 108 fpm

5: Initial: 149 fpm, Final: 148 fpm

6: Initial: 158 fpm, Final: 145 fpm

AC Readings:

1: Initial: 149 fpm, Final: 149 fpm

2: Initial: 107 fpm, Final: 107 fpm

3: Initial: 52 fpm, Final: 52 fpm

4: Initial: 101 fpm, Final: 101 fpm

5: Initial: 52 fpm, Final: 52 fpm

6: Initial: 129 fpm, Final: 129 fpm

Hood Group 4

Exhaust CFM: Design = 850 Initial = 744 Final = 890 (104.7% of design)

Hood 3 (HD2-Fry) (HD2-Fry)

Model: 3650ELPX-2 **Length:** 4' 2"

Exhaust CFM: Design = 850 Initial = 744 Final = 890
(104.7% of design)

Other Notes:

N/A



Installation

Hung Using appropriate material to safely secure hood. Design: **Yes** Actual: **Yes**

COOKING EQUIPMENT ON AND OPERATING Design: **Yes** Actual: **Yes**

COOKING EQUIPMENT INSTALLED AS CLOSE TO BACK WALL AS POSSIBLE Design: **Yes** Actual: **Yes**

END PANELS INSTALLED CORRECTLY Design: **Yes** Actual: **Yes**

Smoke Test Performed on all Hoods? Upload Video Design: **Yes** Actual: **Yes**

Other Notes:

N/A

See attachment(s): [202602261153811356.mp4]

Measure the Front lower edge of the Hood to the Floor. (AFF)

Design: **72**

Actual: **72**

Are there combustibles within 18" of the Hood?

Design: **No**

Actual: **No**

Filters

Type: Captrate Solo

Filter 1 Size: 16x16 Initial Velocity: 138 fpm Final Velocity: 171 fpm
Initial CFM: 250 Final CFM: 309 Fan: #2 - EADU85H (KEF2-FRY)

Filter 2 Size: 16x16 Initial Velocity: 148 fpm Final Velocity: 164 fpm
Initial CFM: 268 Final CFM: 297 Fan: #2 - EADU85H (KEF2-FRY)

Filter 3 Size: 16x16 Initial Velocity: 125 fpm Final Velocity: 157 fpm
Initial CFM: 226 Final CFM: 284 Fan: #2 - EADU85H (KEF2-FRY)

Hood Group 5

Exhaust CFM: Design = 0 Initial = 0 Final = 0 (0% of design)

Supply CFM: Design = 545 Initial = 549 Final = 537 (98.5% of design)

Supply AC CFM: Design = 0 Initial = 192 Final = 192 (0% of design)

Hood 4 (HD2-PSP) (HD2-PSP)

Model: 246Misc ACPSP-ONLY **Length:** 4' 2"

Exhaust CFM: Design = 0 Initial = 0 Final = 0 (0% of design)

Installation

Hung Using appropriate material to safely secure hood. Design: **Yes** Actual: **Yes**

COOKING EQUIPMENT ON AND OPERATING Design: **Yes** Actual: **Yes**

COOKING EQUIPMENT INSTALLED AS CLOSE TO BACK WALL AS POSSIBLE Design: **Yes** Actual: **Yes**

Smoke Test Performed on all Hoods? Upload Video Design: **Yes** Actual: **Yes**

Measure the Front lower edge of the Hood to the Floor. (AFF) Design: **80** Actual: **80**

Are there combustibles within 18" of the Hood? Design: **No** Actual: **No**

Supply

Supply CFM: (98.5% of design)	Design = 545 Fan: #3 - EA1-D.250-15D (HMUA1)	Initial = 549	Actual = 537
AC CFM: (0% of design)	Design = 0	Initial = 192	Actual = 192

PSP 1

Orientation:	Front	Length:	4' 2"	Width:	14"
Banks:	1	Blanks:	1		
CFM: (0% of design)	Design = 545	Initial = 549	Final = 537		
Velocity: (0% of design)	Design = 135	Initial = 0	Final = 0		
AC CFM: (0% of design)	Design = 250	Initial = 192	Final = 192		
AC Velocity: (0% of design)	Design = 0	Initial = 0	Final = 0		

Readings:

1: Initial: 138 fpm, Final: 139 fpm	2: Initial: 159 fpm, Final: 148 fpm
3: Initial: 116 fpm, Final: 114 fpm	4: Initial: 110 fpm, Final: 113 fpm
5: Initial: 131 fpm, Final: 123 fpm	6: Initial: 121 fpm, Final: 122 fpm

AC Readings:

1: Initial: 114 fpm, Final: 114 fpm	2: Initial: 142 fpm, Final: 142 fpm
3: Initial: 126 fpm, Final: 126 fpm	4: Initial: 54 fpm, Final: 54 fpm
5: Initial: 137 fpm, Final: 137 fpm	6: Initial: 109 fpm, Final: 109 fpm

Fans

Fan 1 - EADU85H (KEF1-GDL) (KEF1-GDL)

Model: EADU85H

Exhaust

Exhaust CFM: Design = 1150 Actual = 1244 (108% of design)

Record the ECM Speed		Actual:	60
VOLTS	Design:	115	Actual: 120
Do all legs measure the same phase to phase and phase to ground voltage? If not, include notes with all phase to phase and phase to ground voltages.	Design:	Yes	Actual: Yes
HP	Design:	0.75	Actual: 0.75
HUB SET SCREW TIGHT	Design:	Yes	Actual: Yes

FAN LEVEL	Design: Yes	Actual: Yes
ROTATION	Design: Correct	Actual: Correct
UNIT VIBRATION	Design: Good	Actual: Good
FLA	Design: 8.9	Actual: 3.34
OVERLOAD SET POINT	Design: 8.9	Actual: 8.9
PHASE	Design: 1	Actual: 1
Unit within five miles from the coast?		Actual: No
INSPECT ALL EXTERIOR SIDES OF UNIT. ANY VISIBLE DAMAGE	Design: No	Actual: No

Installation Notes:

*Punch Item: Electrician
Electrician did not land wires correctly on disconnect switch. This may cause issues with voltage drops in the future.*



Other Notes:

N/A



SPEED CONTROL VOLTAGE	Design: 65	Actual: N/A
-----------------------	-------------------	--------------------

RPM - DESIGN	Design: 1254	Actual: 1080
RPM - MAX	Design: 1900	Actual: N/A
RPM - MAX RECOMMENDED	Design: 1600	Actual: N/A

Fan 2 - EADU85H (KEF2-FRY) (KEF2-FRY)

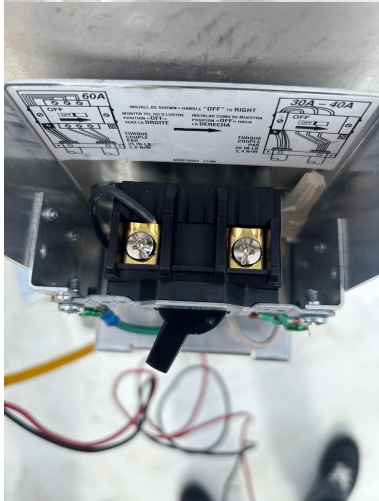
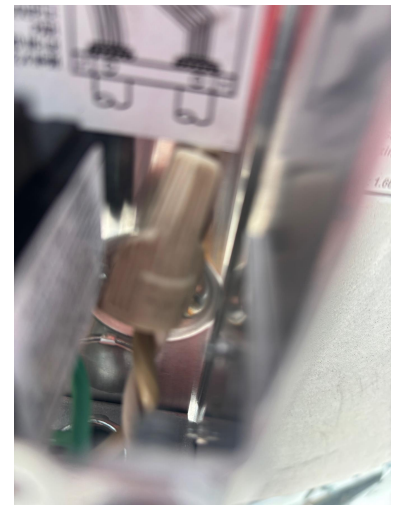
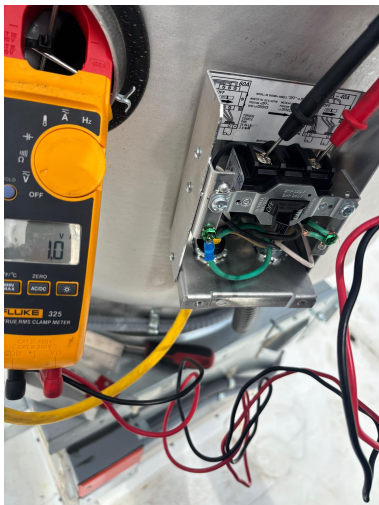
Model: EADU85H

Exhaust

Exhaust CFM: Design = 850 Actual = 890 (105% of design)

Other Notes:

Electrician did not land wires properly on disconnect switch. This may cause issues later on.



Record the ECM Speed

Actual: **57**

VOLTS

Design: **115**

Actual: **123**

Do all legs measure the same phase to phase and phase to ground voltage? If not, include notes with all phase to phase and phase to ground voltages.

Design: **Yes**

Actual: **Yes**

HP	Design: 0.75	Actual: 0.75
HUB SET SCREW TIGHT	Design: Yes	Actual: Yes
FAN LEVEL	Design: Yes	Actual: Yes
ROTATION	Design: Correct	Actual: Correct
UNIT VIBRATION	Design: Good	Actual: Good
FLA	Design: 8.9	Actual: 3.36
OVERLOAD SET POINT	Design: 8.9	Actual: 8.9
PHASE	Design: 1	Actual: 1
Unit within five miles from the coast?		Actual: No
INSPECT ALL EXTERIOR SIDES OF UNIT. ANY VISIBLE DAMAGE	Design: No	Actual: No

Other Notes:

N/A



SPEED CONTROL VOLTAGE	Design: 65	Actual: N/A
RPM - DESIGN	Design: 1189	Actual: 1026
RPM - MAX	Design: 1900	Actual: N/A
RPM - MAX RECOMMENDED	Design: 1600	Actual: N/A

Fan 3 - EA1-D.250-15D (HMUA1) (HMUA1)

Model: EA1-D.250-15D

Supply

Supply CFM: Design = 1320 Actual = 1455 (110% of design)

VOLTS Design: **230** Actual: **213**

Is the main transformer (TR-01) tapped for the correct voltage?

Actual: **Yes**

HP

Design: **1**

Actual: **1**

HUB SET SCREW TIGHT

Design: **Yes**

Actual: **Yes**

FAN LEVEL

Design: **Yes**

Actual: **Yes**

ROTATION

Design: **Correct**

Actual: **Correct**

UNIT VIBRATION

Design: **Good**

Actual: **Good**

FLA

Design: **2.8**

Actual: **2**

OVERLOAD SET POINT

Design: **2.8**

Actual: **2.8**

PHASE

Design: **3**

Actual: **3**

DAMPER INSTALLED

Design: **Yes**

Actual: **Yes**

Unit within five miles from the coast?

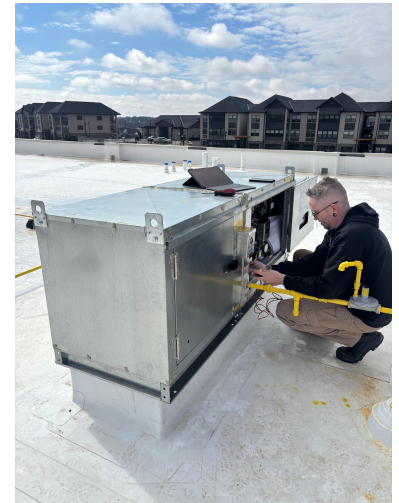
Actual: **No**

INSPECT ALL EXTERIOR SIDES OF UNIT. ANY VISIBLE DAMAGE

Actual: **No**

Other Notes:

N/A



Record the VFD HZ	Design: 53.8 Hz	Actual: 45.8
RPM - DESIGN	Design: 1570	Actual: 1335
RPM - MAX	Design: 2400	Actual: N/A
RPM - MAX RECOMMENDED	Design: 2100	Actual: N/A
Is Supply Fan bolted/secured to curb?	Design: Yes	Actual: Yes

Heater

Gas Heater

GAS TYPE	Design: Natural	Actual: Natural
INLET GAS PRESSURE	Design: 7	Actual: 8
FREEZE STAT TEMPERATURE	Design: 35	Actual: 35
FREEZE STAT TIMER	Design: 10	Actual: 10
SPACE SET POINT	Design: N/A	Actual: N/A
INTAKE SET POINT	Design: 45	Actual: 55
DISCHARGE SET POINT	Design: 55	Actual: 65
HIGH LIMIT SET POINT		Actual: N/A

Direct Fired Heater

Housing Size: 1

Burner Profile Pressure: 0"

PILOT FLAME SIGNAL	Design: 12	Actual: 14
TEMP RISE	Design: 63	Actual: 66
HIGH FIRE MANIFOLD GAS PRESSURE	Design: 0.1	Actual: 0.5
HIGH FIRE INLET PRESSURE		Actual: 8
HIGH FIRE FLAME SIGNAL	Design: 12	Actual: 14
BURNER DIFFERENTIAL PRESSURE	Design: 0.3	Actual: 0.26
LOW MANIFOLD GAS PRESSURE		Actual: -0.25
MODULATION TIME	Design: 4	Actual: 1
LOW FIRE FLAME SIGNAL	Design: 12	Actual: 14

ECP 1 - SC-E012022MA (ECP1) (ECP1)

Package #: SC-E012022MA

SCADA 2.0 CAS COM VZ Questions

Are all devices assigned and named appropriately to an area?

Actual: **True**

Confirm all devices are transmitting data. Upload a screenshot of transmitting data; such as temperature, amp draw, etc

Actual: **True**

Box_C-24x18x8.625 Questions

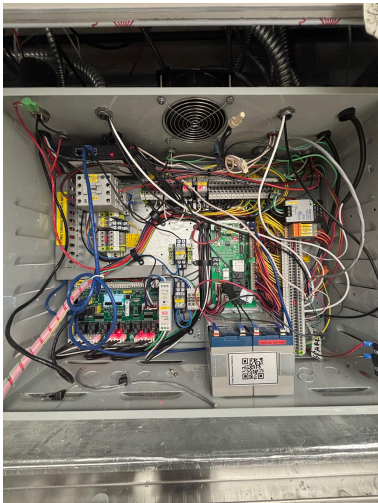
If conduit holes are drilled out, the debris can fall into VFD and cause failure. Take a picture of where the conduit enters the cabinet, and verify VFD is free of debris.

Actual: **Good**

Smart Control

Other Notes:

N/A



ROOM TEMPERATURE OFFSET

Design: **20**

Actual: **21**

Other Notes:

N/A



HOW MANY FAN ZONES ARE THERE	Design: 2	Actual: 2
HYSTERESIS TEMPERATURE		Actual: 2
Room Sensor Type	Design: RoomSensor	Actual: Room Sensor
Is room sensor wireless or wired?		Actual: Wired
Is room sensor operating correctly?		Actual: Yes
Upload Picture of installation		

Other Notes:

N/A



Are there Tempering HMI's?	Design: Yes	Actual: No
ALL TEMP SENSORS ARE WIRED IN	Design: Yes	Actual: Yes
Do any of the light circuits exceed 1400W?	Design: No	Actual: No
ALL LIGHTS WORK	Design: Yes	Actual: Yes

Installation Notes:

Electrician has wired lighting circuit wrong. Hoods 2 has a B2 de-energized fault. CAS Service supplied GC with tech support number for electrician due to him not being on site at time of SDV.

ALL FAULTS CLEARED	Design: Yes	Actual: Yes
ECPM03 HARDWARE REVISION		Actual: 04
ECPM03 PROGRAM VERSION		Actual: 2.17
CASHMI HARDWARE REVISION		Actual: 3

CASHMI PROGRAM VERSION

Actual: **2.17**

ECPM03 DATE AND TIME
ACCURATE

Design: **Yes**

Actual: **Yes**

BMS & Monitoring

BMS TYPE

Design: **CASLink**

Actual: **CASLink**

Sensors

T2

SENSOR TYPE

Design: **Duct Stat**

Actual: **Duct Stat**

SENSOR LOCATION

Design: **H1CV1**

Actual: **H1CV1**

FAN NUMBER

Design: **1**

Actual: **1**

T3

SENSOR TYPE

Design: **Duct Stat**

Actual: **Duct Stat**

SENSOR LOCATION

Design: **H3CV1**

Actual: **H2CV1**

FAN NUMBER

Design: **2**

Actual: **2**

VFDs

VFD 1

DESIGN CFM

Design: **1320**

Actual: **1455**

FAN DIRECTION

Design: **Forward**

Actual: **Forward**

DCV VFD

SUPPLY FAN # ASSIGNED

Design: **3**

Actual: **3**

OVERLOAD = P108

Design: **66**

Actual: **66**

MAX HZ

Design: **53.8**

Actual: **45.8**

ALL FAULTS CLEARED = P197

Design: **Yes**

Actual: **Yes**

P508

Actual: **N/A**

LOAD IN SEPARATE CONDUIT.

Design: **Yes**

Actual: **Yes**

TANK

TANK ECP 1 (ECP1)

Location : Hood #1 3650ELPX-2: Fire Cabinet Wall Mounted [4.0/4.0]

SCADA 2.0 CAS COM VZ Questions

Are all devices assigned and named appropriately to an area?

Actual: **True**

Confirm all devices are transmitting data. Upload a screenshot of transmitting data; such as temperature, amp draw, etc

Actual: **True**

Box_C-24x18x8.625 Questions

If conduit holes are drilled out, the debris can fall into VFD and cause failure. Take a picture of where the conduit enters the cabinet, and verify VFD is free of debris.

Actual: **GOOD**

TANK Fire Suppression 1 (fs1)

Location : Hood #1 - Utility Cabinet Wall Mount

87-300030-001-CHG2 Questions

All Schrader cores installed and caps secured tightly

Design: **Yes**

Actual: **Yes**

12-F28021-005360 Questions

Apply a heat gun approximately 6" from each Fire Stat. Record how many seconds it takes to activate a fire condition. Any Fire Stat activated less than 10 seconds, or greater than 120 seconds should be replaced under warranty (create plant note)

Actual: **75**

Is Building Alarm wired In?

Design: **Yes**

Actual: **No**

Is Trouble Relay wired in?

Design: **Yes**

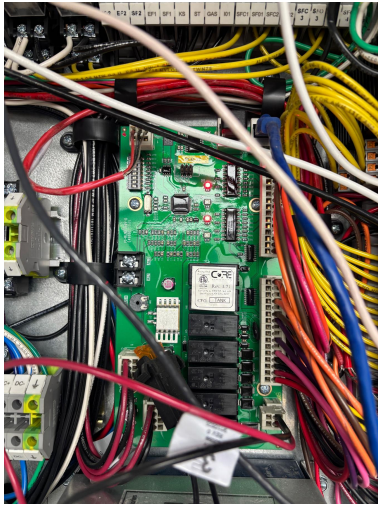
Actual: **No**

TANK Board Software Version

Actual: **1.71**

Other Notes:

N/A



TANK Hardware Version

Actual: **2.3**

Electrician

Verify Voltage at H1 and N1 is 120VAC.

Actual: **120**

Verify the Voltage at H1D and N1D is 27.5 VDC

Actual: **27.5**

Is there a UDS on this job?

Actual: **No**

Fire System Contractor w/CAS Supervision

Take photos of entire appliance lineup.

Actual: **Complete**

Other Notes:

N/A

Other Notes:

N/A



Does the appliance lineup match with the NOLA drawings?

Actual: **Yes**

Is all distribution piping 3/8" black iron, Stainless-Steel, or 1/2" Copper?

Design: **Yes**

Actual: **Yes**

Does the supply line piping from the TANKS to the first overlapping nozzle exceed 42ft?

Design: **No**

Actual: **No**

Are all appliance drops 3/8" polished Stainless-Steel or chrome-plated black iron?

Actual: **Yes**

Are the first and last appliance nozzles within 12" of the ends of the hazard zone?

Design: **Yes**

Actual: **Yes**

Are all overlapping nozzles a maximum of 15" from Front/Back of Hazard Zone?

Design: **Yes**

Actual: **Yes**

Are all overlapping nozzles 35-50" above the cooking surface?

Design: **Yes**

Actual: **Yes**

No appliance drop has more than 2 nozzles.

Design: **True**

Actual: **True**

Does any appliance branch piping exceed max length of 10ft?

Design: **No**

Actual: **No**

Does the correct number of nozzles cover each Duct Riser?

Design: **Yes**

Actual: **Yes**

Do any backshelves overhang a cooking surface 6" - 12"?

Actual: **No**

Do any backshelves/obstructions overhang a cooking surface more than 12"?

Actual: **No**

Are there any Salamanders or Upright Broilers?

Actual: **No**

Are there any Woks?

Actual: **No**

Are there any fryers?

Actual: **Yes**

Are all fryers, less than 14" wide, covered by appliance drops that are no more than 36" apart?

Design: **Yes**

Actual: **Yes**

Are all fryers, greater than 14" wide, covered by appliance drops that are no more than 30" apart?

N/A

Are there any Tilt Skillets or Braising Pans?

Actual: **No**

Are there any other Appliance Specific coverages?

Actual: **No**

What Is the Hood/Appliance Rated Temperature?

Actual: **Light/Medium 450F**

Have shipping covers been removed from all Fire Stats?

Design: **Yes**

Actual: **Yes**

Upload photos verifying correct Fire stats (360 or 600) have been installed.

Design: **Complete**

Actual: **Complete**

Other Notes:

N/A

Other Notes:

N/A



Are any gas appliance discharge flues within 18" of Fire-Stat?

Design: **No**

Actual: **No**

Is supervised loop wiring above hood ran with high temp (842 degree) wire?

Design: **Yes**

Actual: **Yes**

Is MAD wired in a supervised loop, utilizing 4 wires and metal conduit? (upload photo of MAD terminals)

Design: **Yes**

Actual: **Yes**

Other Notes:

N/A

Other Notes:

N/A

Is MAD installed 10-20' from hood, 42-48" above the floor, at a point of egress? (upload photo of location in room)

Design: **Yes**

Actual: **Yes**

Other Notes:

N/A



Has CORE Interlock been wired (If multiple fire systems present)? **N/A**

Are DIP switches set correctly according to number of Fire Groups? **N/A**

Did CAS Service Supervise, Assist, or Wire supervised loop connections? Actual: **Only verified connections at MAD and terminals**

Calculate the total number of Flow Points. Design: **38** Actual: **38**

Is Gas Valve Orientation Correct? Actual: **Yes**

Is the TANK system located in a climate-controlled area? Actual: **Yes**

Is the Pressure Switch functioning properly? Actual: **Yes**

CAS Service

Other Notes:

Pre tested by Silco. CAS Service was asked to not do the pre test by site.

Who holds the TANK Fire System PO? Actual: **3rd Party Distributor**

Other Notes:

Silco

Has the TANK pre-testing been completed? Actual: **Yes**

Activate each Manual Activation Device: do all balloons fill and hold pressure properly? Actual: **Yes**

Activate each Fire Stats w/ heat gun: do all balloons fill and hold pressure properly? Actual: **Yes**

Does Fire System activate while on Battery backup only?

Actual: **Yes**

Does Gas Valve close in fire condition?

Actual: **Yes**

Perform leak test for 15 minutes as outlined in manual. Did system pass leak test?

Actual: **Yes**

Has the Fire System been finalled and tagged?

Actual: **No**

Other Notes:

Silco has not performed the fire final yet.

Are all Nozzle caps w/ lanyards intact and in place?

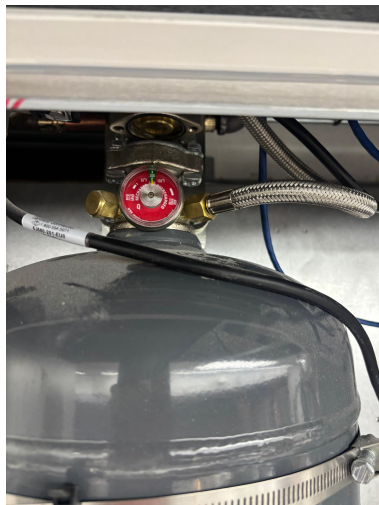
Actual: **Yes**

Does every TANK bottle show 200 PSI on the pressure guage?

Actual: **Yes**

Other Notes:

N/A



Are TANKS installed secured with straps and mounting hardware?

Design: **Yes**

Actual: **Yes**

Date written on batteries w/ paint pen:

Actual: **2/26/2026
5:10:00 PM**

PCU Installations

NONE

PCU Installations

NONE

AQEs

NONE

UDS

NONE