

**Report By:**

National TAB  
1329 E. KEMPER ROAD  
SUITE 4210  
CINCINNATI, OH 45246



**Report: DOAS 1 Analysis**  
**Function: Test, Adjust, & Balance**  
**Date: 09/22/2025**  
**Completed By: National TAB**

# PROJECT

## BVE - Brightview Senior Living (Eatontown, NJ)

201 Wyckoff Road

Eatontown, NJ 07724

### Client

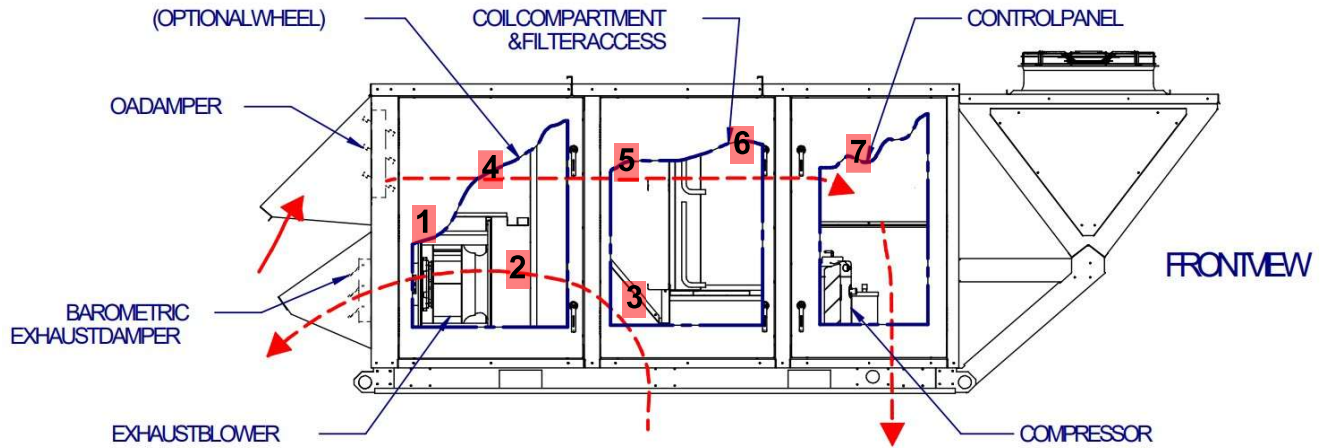
D.J. Wagner Heating & Air Conditioning, Inc.  
30 Cutler Avenue  
Westville, NJ 08093

# National TAB

Project: BVE - Brightview Senior Living (Eatontown, NJ)

## Table Of Contents

Section	Page #
Pressure Profile	3
AHU-DUAL FAN	4
Traverse Sheets	7
Flow hood readings sheet	8
GRD Layout	9



1. 0.44" EF DISCHARGE
2. -1.15" EF SUCTION
3. -0.60" PRESSURE AT EXHAUST DUCT (.55" WHEEL/PREFILTER DROP)
4. -0.08" OA INTAKE
5. -0.82" PRECOIL
6. -1.07" SUPPLY FAN INTAKE
7. 0.52" SUPPLY DISCHARGE

# National TAB

Project: BVE - Brightview Senior Living (Eatontown, NJ)

## System/Unit: AHU-DUAL FAN



Asset: DOAS-1

AREA:AREA A - LEVEL 1

UNIT DATA - SUPPLY		
	Design	Actual
Manufacturer	NA	CARRIER
Model Number	NA	62XK10DCMCCAGGBGDU
Serial Number	-	1422V03391
No. Pre-Filters / Size (1)	-	4/24X24X2
No. Final Filters / Size (1)	-	3/20X25X4

MOTOR DATA - SUPPLY	
	Actual
Motor MFG / Frame	BALDOR/145T
Horsepower / RPM	2/1760
Rated Volts / Phase	230/3
Rated Amperage / SF	5.6/2.8

TEST DATA - SUPPLY		
	Design	Actual
Total CFM	2605	
Fan RPM	2297	2256
VFD Speed	-	76.9HZ
RL Voltage	208	208.8/207.2/207.5
RL Amperage	-	4.6/4.7/4.9
Motor B.H.P.	1.66	1.47

PERFORMANCE DATA - SUPPLY		
	Design	Actual
Suction S.P.	-	-1.07"
Discharge S.P.	-	0.52"
Total S.P.	2.77"	1.59"
Chilled Water Coil P.D.	(DX COIL)	*0.25"
Final Filters P.D.	-	*COMBINED
Heat Wheel P.D.	-	0.74"
Pre-Filters P.D.	-	*COMBINED
Total ESP	1.25"	0.60"

UNIT DATA - EXHAUST/RETURN		
	Design	Actual
No. Pre-Filters / Size (1)	-	2/20X24X2
No. Pre-Filters / Size (2)	-	1/12X24X2

MOTOR DATA - EXHAUST/RETURN	
	Actual
Motor MFG / FRAME	BALDOR/145T
Horsepower / RPM	1.5/1755
Rated Volts / Phase	230/3
Rated Amperage / SF	4.4/1.15

TEST DATA - EXHAUST/RETURN		
	Design	Actual
Total CFM	2330	
Fan RPM	1969	1989
VFD Speed	-	68HZ
RL Voltage	-	213.3/213.5/213.8
RL Amperage	-	3.3/3.4/3.5
Motor B.H.P.	1.07	1.05

PERFORMANCE DATA - EXHAUST/RETURN		
	Design	Actual
Suction S.P.	-	-1.15"
Discharge S.P.	-	0.44"
Total S.P.	1.81"	1.59"
Heat Wheel P.D.	0.73"	*0.55"
Pre-Filters P.D.	-	*COMBINED
Total ESP	1.00	0.60"

# National TAB

Project: BVE - Brightview Senior Living (Eatontown, NJ)

## AHU-DUAL FAN



### Diffuser Supply (GRD)

#### DOAS-1/AREA A - LEVEL 1

Asset							
Asset Name	Location	Type	Size	DESIGN CFM	CFM(1)	FINAL CFM	% to design
SGRD1	9	C		90			-
SGRD2	8	C		90			-
SGRD3	11	C		105			-
SGRD4	12	C		105			-
SGRD5	10	C		105			-
SGRD6	60	A		260			-
SGRD7	13	C		90			-
SGRD8	14	C		165			-
SGRD9	61	C		25			-
SGRD10	15	C		65			-
SGRD11	15	C		25			-
SGRD12	15	C		65			-
SGRD13	16	C		105			-
SGRD14	64	C		95			-
SGRD15	7	C		115			-
SGRD16	6	C		160			-
SGRD17	4	C		105			-
SGRD18	5	C		105			-
SGRD19	3	C		95			-
SGRD20	2	C		90			-
SGRD21	86	A		250			-
SGRD22	54	C		30			-
SGRD23	1	C		90			-
SGRD24	52	C		25			-
SGRD25	50	C		100			-
SGRD26	CC1-4	C		50			-
Total				2605	0	0	0%

### Diffuser Ret/Exh (GRD)

**DOAS-1/AREA A - LEVEL 1**

<b>Asset</b>								
<b>Asset Name</b>	<b>Location</b>	<b>Type</b>	<b>Size</b>	<b>DESIGN CFM</b>	<b>AK</b>	<b>CFM(1)</b>	<b>FINAL CFM</b>	<b>% to design</b>
EGRD1	9	B		90				-
EGRD2	11	B		105				-
EGRD3	8	B		90				-
EGRD4	10	B		105				-
EGRD5	12	B		105				-
EGRD6	13	B		90				-
EGRD7	14	B		165				-
EGRD8	15	B		80				-
EGRD9	60	B		210				-
EGRD10	15	B		75				-
EGRD11	16	B		105				-
EGRD12	7	B		115				-
EGRD13	6	B		160				-
EGRD14	5	B		105				-
EGRD15	4	B		105				-
EGRD16	2	B		90				-
EGRD17	1	B		90				-
EGRD18	3	B		95				-
EGRD19	53	B		100				-
EGRD20	86	B		250				-
<b>Total</b>				<b>2330</b>		<b>0</b>	<b>0</b>	<b>0%</b>

**National TAB**

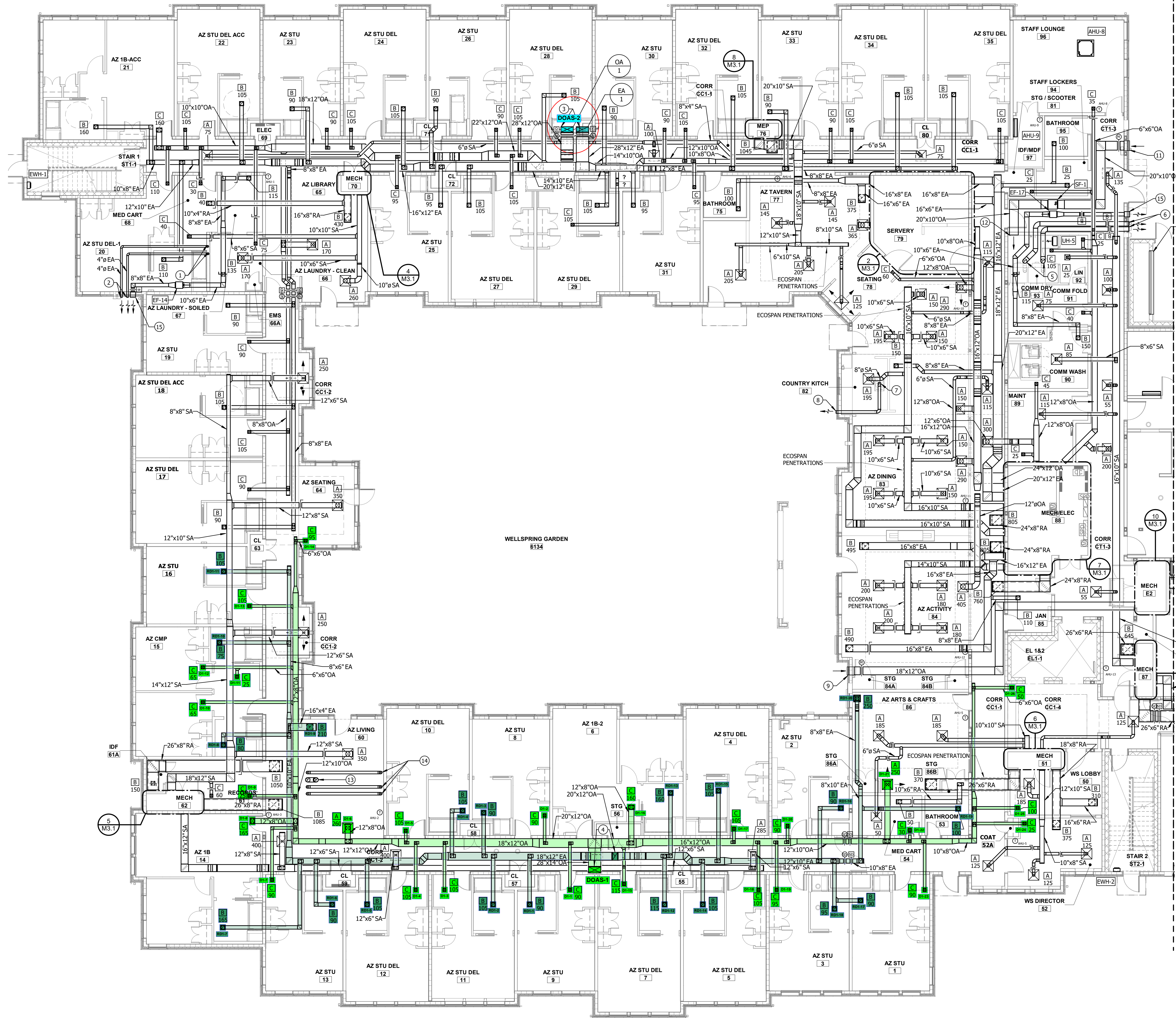
**Project: BVE - Brightview Senior Living (Eatontown, NJ)**

- [Open](#) TRAVERSE\_SHEET.xlsx

**National TAB**

**Project: BVE - Brightview Senior Living (Eatontown, NJ)**

- [Open](#) BRIGHTVIEW\_GRD.xlsx

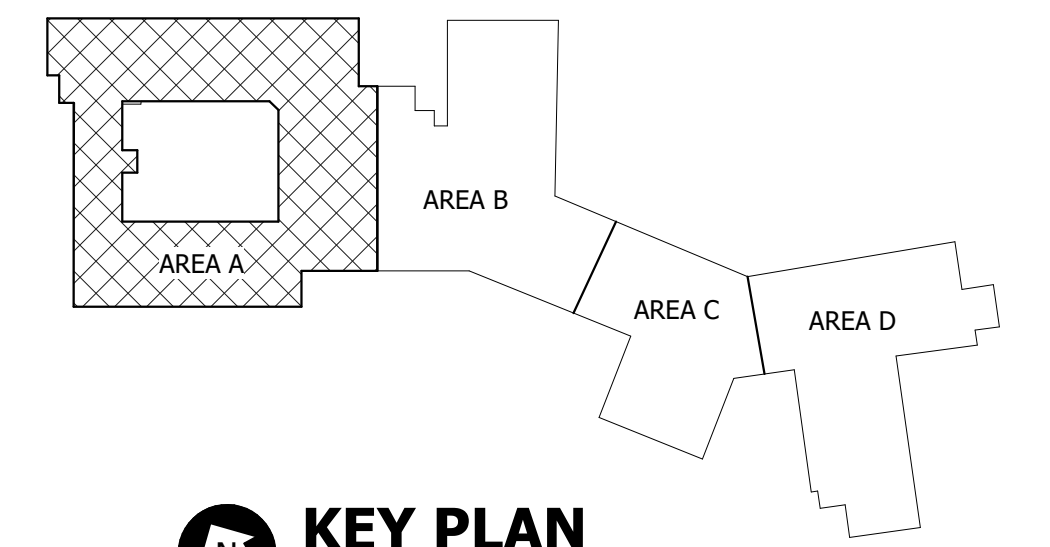


**GENERAL NOTES:**

1. REFER TO PART PLANS ON SHEET M3.1 FOR ADDITIONAL INFORMATION.
2. REFER TO AIR DEVICE SCHEDULE ON SHEET M3.1 FOR ADDITIONAL DUCT SIZES, SIZE AND ROUTE REFRIGERANT PIPING PER MANUFACTURER RECOMMENDATIONS.
- 3.

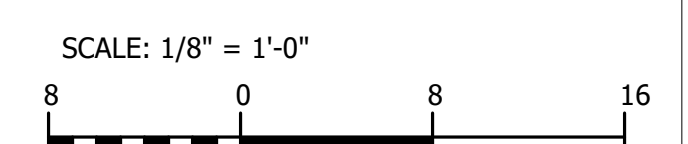
**DRAWING NOTES:**

- ① 4" DRYER EXHAUST DN TO MECHANICAL EQUIPMENT.
- ② 4" DRYER EXHAUST CAP W/ BACKDRAFT DAMPER.
- ③ 28"x12" OA/EA UP TO DOAS-2.
- ④ 28"x14" OA AND 12x18 EA UP TO DOAS-2. PROVIDE FLEXIBLE CONNECTION AT UNIT.
- ⑤ 10" DRYER EXHAUST DN TO DRYER.
- ⑥ 10" DRYER EXHAUST CAP W/ BACKDRAFT DAMPER.
- ⑦ 8" EA DN TO COUNTRY KITCHEN HOOD.
- ⑧ 8" HOOD EXHAUST CAP W/ BACKDRAFT DAMPER AND BIRDSCREEN.
- ⑨ 24"x18" OA INTAKE LOUVER W/ BIRDSCREEN AND 24"x18"x12" PLENUM.
- ⑩ 144"x69" GENERATOR INTAKE LOUVER W/ BIRDSCREEN.
- ⑪ 22"x22" OA INTAKE LOUVER W/ BIRDSCREEN AND 22"x22"x12" PLENUM.
- ⑫ 20"x10" OPEN ENDED DUCT W/ BIRDSCREEN.
- ⑬ 10" FIREPLACE FLUE UP TO ROOF. COORDINATE W/ FINAL EQUIPMENT SELECTIONS.
- ⑭ 6" FIREPLACE OA INTAKES UP TO ROOF. COORDINATE W/ FINAL EQUIPMENT SELECTIONS.
- ⑮ 12"x12" EA LOUVER W/ BIRDSCREEN AND 12"x12"x12" PLENUM.



**FIRST FLOOR HVAC - WING A**  
SCALE: 1/8" = 1'-0"

**KEY PLAN**  
SCALE: NONE



**ARCHITECT**  
Hord Coplan Macht, Inc.  
700 E. Pratt St, Suite 1200  
Baltimore, MD 21202  
p. 410.837.7311 f. 410.837.6530

**STRUCTURAL ENGINEER**  
Morabito Consultants, Inc.  
Ridgely Road, Suite 1700  
Sparks, MD 21155  
p. 410.467.2377 f. 410.467.4132

**M/E/P ENGINEER**  
Kibert Consulting Engineers, Inc.  
901 Dulany Valley Rd, Suite 301  
Towson, MD 21286  
p. 410.494.1111 f. 410.828.0787

**CIVIL ENGINEERS**  
Dynamic Engineering  
1904 Main Street  
Lake Como, NJ 07719  
p. 732.974.0198 f. 732.974.3521

**BRIGHTVIEW SENIOR LIVING**

**BRIGHTVIEW EATONTOWN**  
201 WYCKOFF ROAD  
EATONTOWN, NJ 07724

**hord coplan macht**

ARCHITECTURE  
LANDSCAPE ARCHITECTURE  
PLANNING  
INTERIOR DESIGN

PROFESSIONAL CERTIFICATION: THESE DOCUMENTS WERE PREPARED OR APPROVED BY ME AND THAT I AM A DULY LICENSED PROFESSIONAL ENGINEER UNDER THE LAWS OF THE STATE OF NEW JERSEY. LICENSE NUMBER: CE-0093 EXPIRATION DATE: 04/30/2022

F 03/09/21 VE REVISIONS  
no. date revision

Project Name  
**BRIGHTVIEW EATONTOWN**

Project Number  
19094.00

Date  
08/24/2021

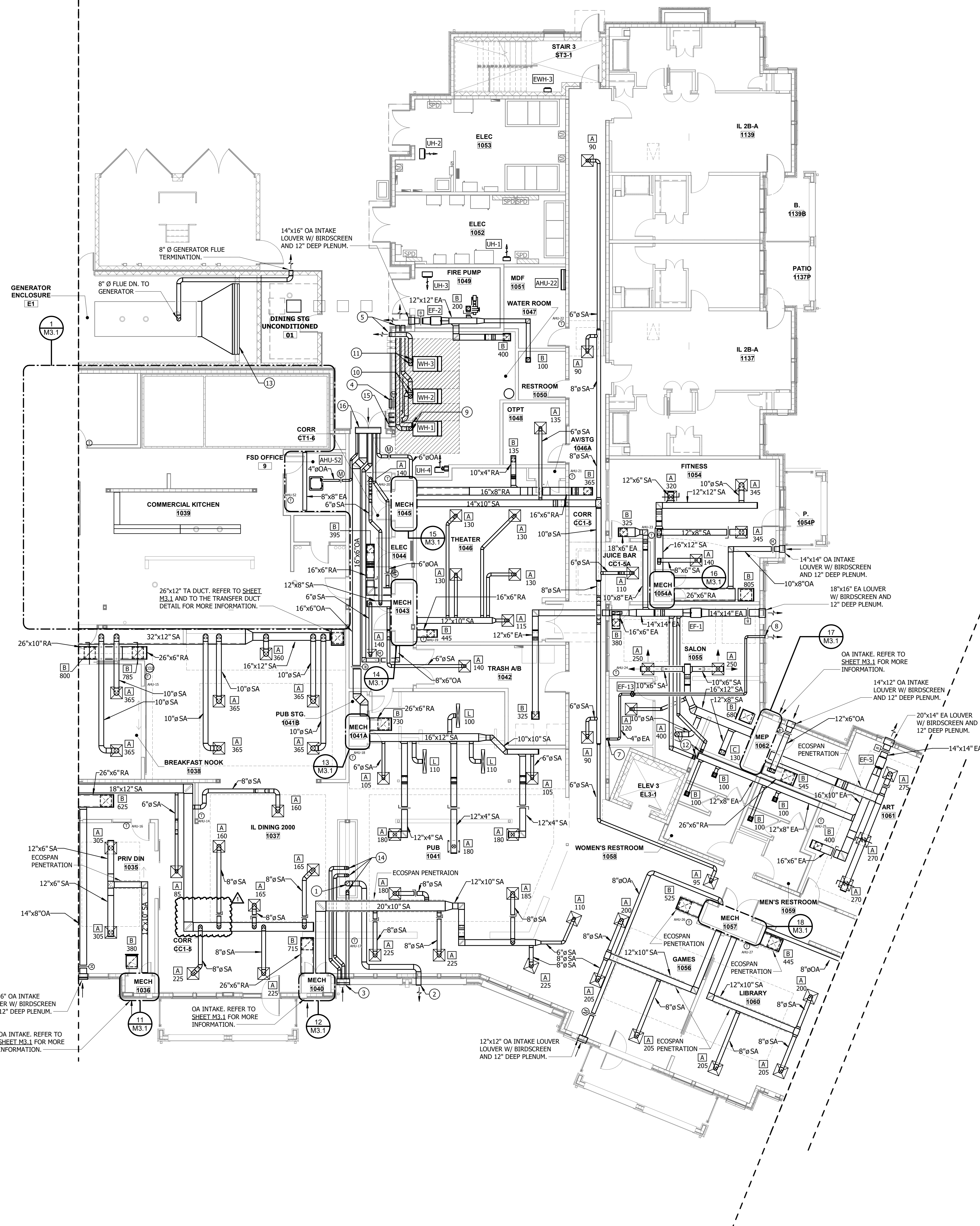
Scale  
1/8" = 1'-0"

Drawing  
LEVEL 1 - WING A - MECHANICAL

**M2.1A**

100% CDS - ISSUED FOR CONSTRUCTION

Hord Coplan Macht, Inc.



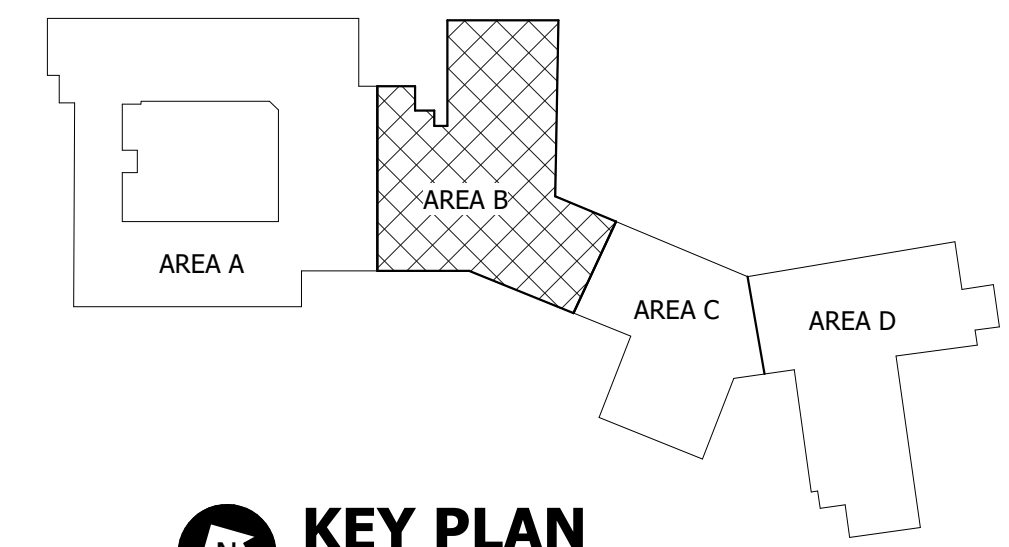
**FIRST FLOOR HVAC - WING B**  
SCALE: 1/8" = 1'-0"

**GENERAL NOTES:**

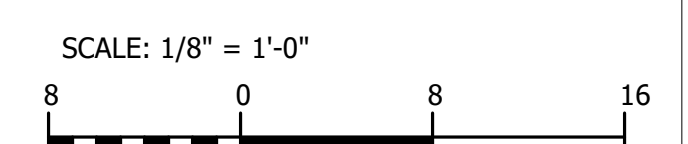
1. REFER TO PART PLANS ON SHEET M3.1 FOR ADDITIONAL INFORMATION.
2. REFER TO AIR DEVICE SCHEDULE ON SHEET M3.1 FOR ADDITIONAL DUCT SIZES.
3. SIZE AND ROUTE REFRIGERANT PIPING PER MANUFACTURER RECOMMENDATIONS.

**DRAWING NOTES:**

1. 8" Ø FLUE DN TO FIREPLACE. COORDINATE W/ FINAL EQUIPMENT SELECTIONS.
2. 10" Ø FIREPLACE FLUE TERMINATION W/ EXTERIOR POWER VENT. INSTALL PER MANUFACTURER'S REQUIREMENTS.
3. 6" Ø OA INTAKE TERMINATIONS AND LOUVER. LOCATE AND INSTALL PER MANUFACTURER'S INSTALLATION REQUIREMENTS.
4. 18"x12" OA INTAKE LOUVER W/ BIRDSCREEN AND 12" DEEP PLENUM.
5. 8" WATER HEATER EXHAUST OUTLETS. LOCATE AND INSTALL PER MANUFACTURER'S REQUIREMENTS.
6. ECOSPAN PENETRATIONS.
7. 4" Ø DRYER EXHAUST DN TO EQUIPMENT CONNECTION.
8. 4" Ø DRYER EXHAUST CAP W/ BACKDRAFT DAMPER.
9. 8" Ø COMBUSTION AIR INTAKE AND 8" Ø FLUE DN TO WH-1. REFER TO SPECIFICATIONS FOR ADDITIONAL REQUIREMENTS.
10. 8" Ø COMBUSTION AIR INTAKE AND 8" Ø FLUE DN TO WH-2. REFER TO SPECIFICATIONS FOR ADDITIONAL REQUIREMENTS.
11. 8" Ø COMBUSTION AIR INTAKE AND 8" Ø FLUE DN TO WH-3. REFER TO SPECIFICATIONS FOR ADDITIONAL REQUIREMENTS.
12. 8x4 EXHAUST DN TO TYPE B GRILLE AND 6x4 EXHAUST DN TO PEDICURE CHAIR CONNECTION. COORDINATE MOUNTING HEIGHT W/ MANICURE TABLE ELEVATION.
13. 144"x69" GENERATOR EXHAUST LOUVER W/ BIRDSCREEN.
14. 6" Ø OA INTAKES DN TO FIREPLACE. COORDINATE W/ FINAL EQUIPMENT SELECTIONS.
15. 8" WATER HEATER OA INTAKES W/ GOOSE NECKS. LOCATE AND INSTALL PER MANUFACTURER'S REQUIREMENTS.
16. 52"x14" OA INTAKE LOUVER W/ BIRDSCREEN AND 12" DEEP PLENUM.



**KEY PLAN**  
SCALE: NONE



**ARCHITECT**  
Hord Coplan Macht, Inc.  
700 E. Pratt St., Suite 1200  
Baltimore, MD 21202  
p. 410.837.7311 f. 410.837.6530

**STRUCTURAL ENGINEER**  
Morabito Consultants, Inc.  
Ridgely Road, Suite 1700  
Sparks, MD 21152  
p. 410.467.2377 f. 410.467.4132

**M/E/P ENGINEER**  
Kibart Consulting Engineers, Inc.  
901 Dulany Valley Rd., Suite 301  
Towson, MD 21286  
p. 410.494.1111 f. 410.828.0787

**CIVIL ENGINEERS**  
Dynamic Engineering  
1904 Main Street  
Lake Como, NJ 07719  
p. 732.974.0198 f. 732.974.3521

**BRIGHTVIEW SENIOR LIVING**

**BRIGHTVIEW EATONTOWN**  
201 WYCKOFF ROAD  
EATONTOWN, NJ 07724

**hord coplan macht**

ARCHITECTURE  
LANDSCAPE ARCHITECTURE  
PLANNING  
INTERIOR DESIGN

PROFESSIONAL CERTIFICATION THESE BY CERTIFY THAT THESE DOCUMENTS WERE PREPARED OR APPROVED BY ME AND THAT I AM A FULLY LICENSED PROFESSIONAL ENGINEER UNDER THE LAWS OF THE STATE OF NEW JERSEY. LICENSE NUMBER: CE0393 EXPIRATION DATE: 06/30/2022

no.	date	revision
1	08/24/21	ASH001
F	03/09/21	VE REVISIONS

Project Name  
**BRIGHTVIEW EATONTOWN**

Project Number  
**19094.00**

Date  
**08/24/2021**

Scale  
**1/8" = 1'-0"**

Drawing  
**LEVEL 1 - WING B - MECHANICAL**

**M2.1B**

100% CDS - ISSUED FOR CONSTRUCTION

