

1
1.0100
5TH LEVEL OVERALL MECHANICAL PLAN
1" = 40'-0"



GREATER ORLANDO AVIATION AUTHORITY

V01050
Landside Terminal
Levels 4 and 5

HYATT CONTINENTAL
BALLROOM &
PRE-FUNCTION RENO

ORLANDO INTERNATIONAL AIRPORT



Rhodes + Brito
ARCHITECTS
605 E ROBINSON ST, SUITE 750
ORLANDO, FL 32801
FBAD Lic: AR014284

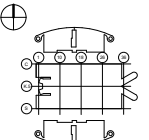


TLC ENGINEERING
255 S. Orange Avenue
Orlando, FL 32801
P: 407.441.1500
www.tlc-engineering.com
TLC No. 119108
THERM, LIGHTING, SOUNDBOX

This item has been electronically signed and sealed by the individual named below, using a dated Digital Signature in the space below, per F.A.C. Rule 61G15-2.004. Printed copies of this document are not considered signed and sealed and the signature must be verified on any electronic copies.

Revisions

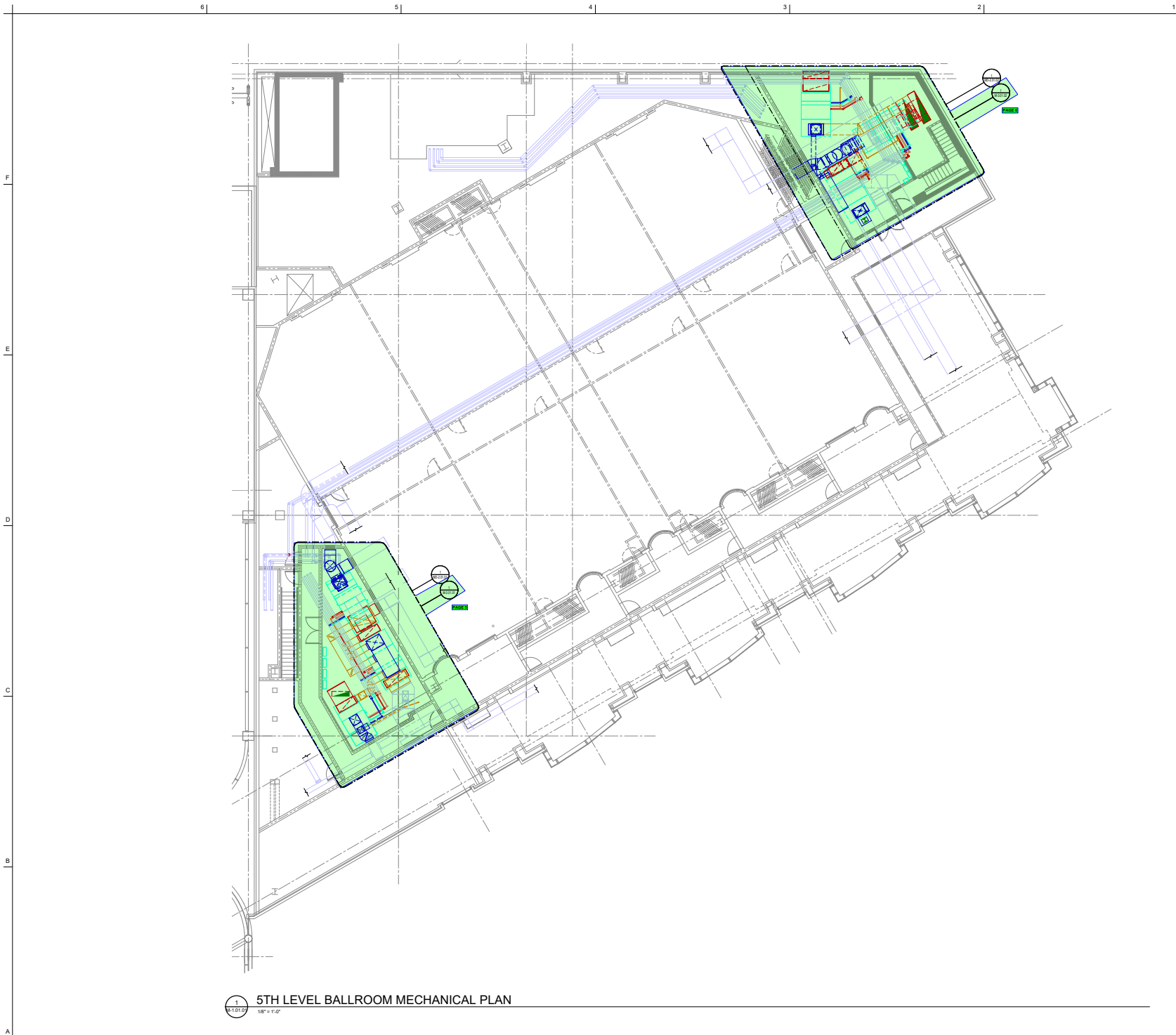
No.	Date	Description



Key Plan
Project No.: 19013.0001
Designed By: OD
Drawn By: AP
Checked By: OD
Issue Date: 02/20/2025
Drawing Scale: 1" = 40'-0"
Drawing Title:

MECHANICAL PLAN -
OVERALL - LEVEL 5

Drawing No.
M-1.01.00



5TH LEVEL BALLROOM MECHANICAL PLAN
1/8" = 1'-0"



GREATER ORLANDO AVIATION AUTHORITY
V01050
 Landside Terminal
 Levels 4 and 5
**HYATT CONTINENTAL
 BALLROOM &
 PRE-FUNCTION RENO**
 ORLANDO INTERNATIONAL AIRPORT



rhodes + brito
 ARCHITECTS
 605 E ROBINSON ST, SUITE 750
 ORLANDO, FL 32801
 FBAD Lic: AR0014284

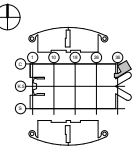


TLC ENGINEERING
 255 S. Orange Avenue
 Suite 102
 Orlando, FL 32801
 P: 407.641.5200
 www.tlc-engineering.com
 COA 15
 TLC No. 119108
 THERM, ELEC, MECH, PLUMB

This item has been electronically signed and sealed by the individual named below, using a dated Digital Signature in the space below, per F.A.C. Rule 61G15-2.004. Printed copies of this document are not considered signed and sealed and the signature must be verified on any electronic copies.

Revisions

No.	Date	Description



Key Plan
 Project No.: 19013.0001
 Designed By: OD
 Drawn By: AP
 Checked By: OD
 Issue Date: 02/20/2025
 Drawing Scale: 1/8" = 1'-0"
 Drawing Title:

**MECHANICAL PLAN -
 LEVEL 5**

Drawing No.
M-1.01.01

6 | 5 | 4 | 3 | 2 | 1

F

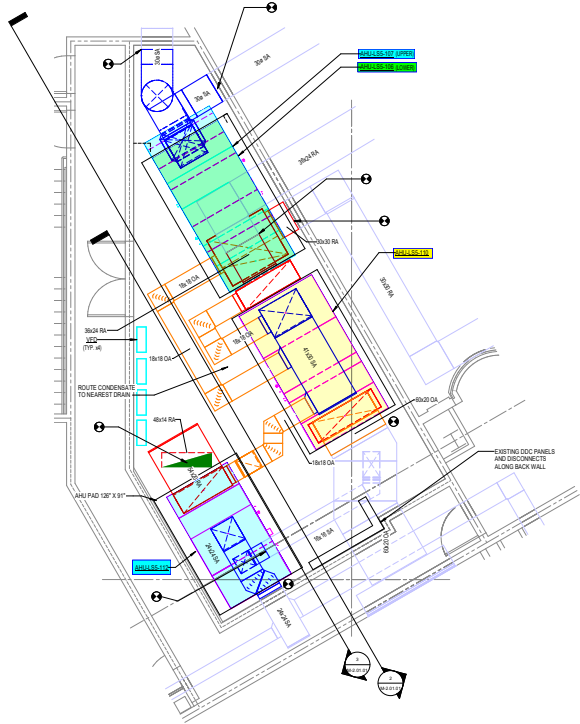
E

D

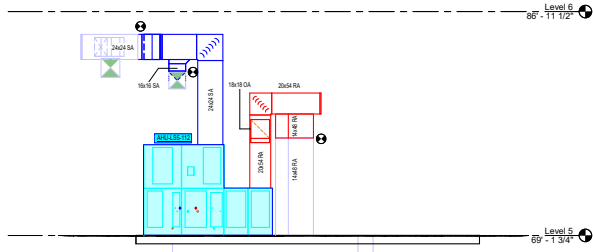
C

B

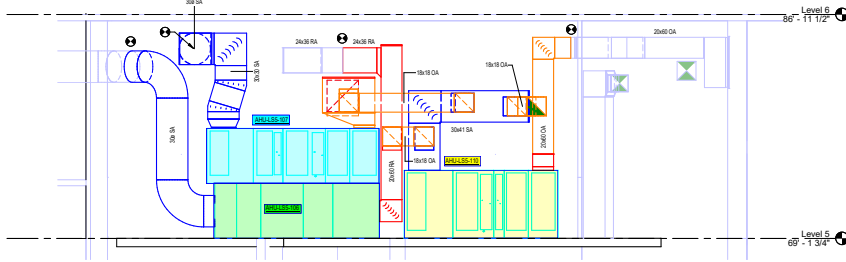
A



1 FIFTH LEVEL BALLROOM HVAC PLAN - AREA D - S.W. MECH. ROOM
1/4" = 1'-0"



3 AHU-LS-112 SECTION
1/4" = 1'-0"



2 AHU-LS-5-106, 107, & 110 SECTION
1/4" = 1'-0"



GREATER ORLANDO AVIATION AUTHORITY

V01050
Landside Terminal
Levels 4 and 5

HYATT CONTINENTAL
BALLROOM &
PRE-FUNCTION RENO
ORLANDO INTERNATIONAL AIRPORT



Rhodes + Drift
ARCHITECTS
605 E ROBINSON ST, SUITE 750
ORLANDO, FL 32801
FBAD Lic: AR0014284

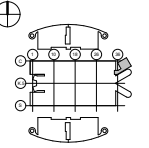


TLC ENGINEERING
255 S. Orange Avenue
Orlando, FL 32801
P: 407.841.0001
www.tlc-engineering.com
TLC No. 119108
TERRY, LUTHER, ENGINEER

This form has been electronically signed and sealed by the individual named below, using a digital Signature in the space below, per F.A.C. Rule 61G-15-2.004. Printed copies of this document are not considered signed and sealed and the signature must be verified on any electronic copies.

Revisions

No.	Date	Description



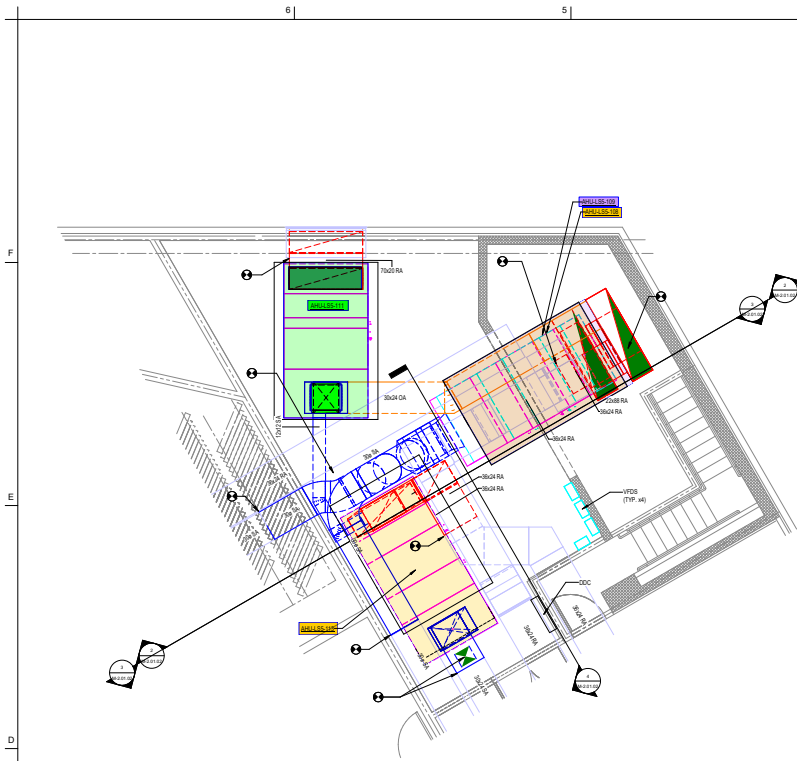
Key Plan

Project No.: 19013.0001
Designed By: OD
Drawn By: AP
Checked By: OD
Issue Date: 02/20/2025
Drawing Scale: 1/4" = 1'-0"
Drawing Title:

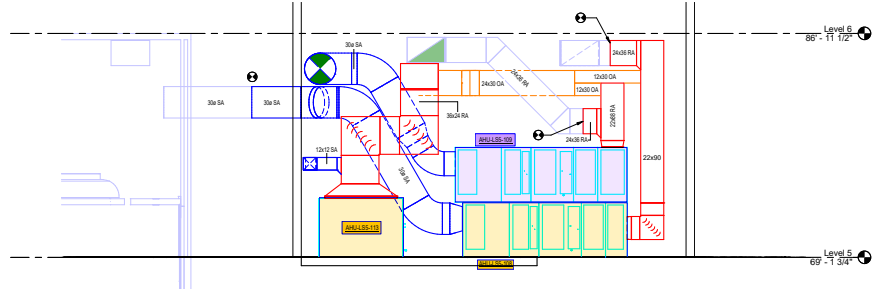
MECHANICAL
ENLARGED PLANS -
S.W. MECH. ROOM -
LEVEL 5

Drawing No.

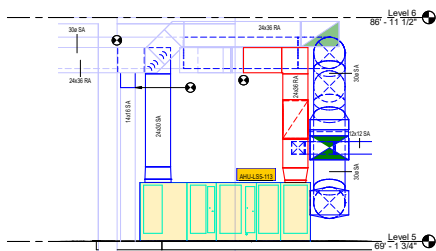
M-2.01.01



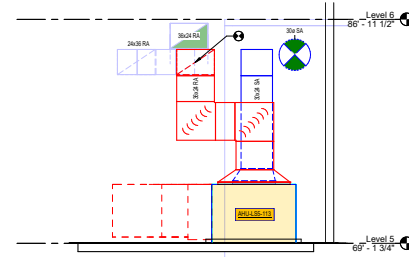
1 FIFTH LEVEL BALLROOM HVAC PLAN - AREA D - N.E. MECH. ROOM
1/4" = 1'-0"



2 AHU-LS5-108, 109, 111 SECTION
1/4" = 1'-0"



4 AHU-LS5-113 SECTION
1/4" = 1'-0"



3 AHU-LS5-113 SECTION 2
1/4" = 1'-0"



GREATER ORLANDO AVIATION AUTHORITY
V01050
Landside Terminal
Levels 4 and 5
HYATT CONTINENTAL
BALLROOM &
PRE-FUNCTION RENO
ORLANDO INTERNATIONAL AIRPORT



rhodes + brito
A P.C.H.I.E.C. S.
605 E ROBINSON ST, SUITE 750
ORLANDO, FL 32801
FBAD Lic: AR0014284

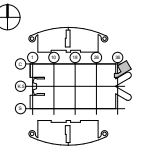


TLC ENGINEERING
255 S. Orange Avenue
Orlando, FL 32801
www.tlcengineering.com
TLC No. 119108

This item has been electronically signed and sealed by the individual named below, using a dated Digital Signature in the space below, per F.A.C. Rule 61G15-2.004. Printed copies of this document are not considered signed and sealed and the signature must be verified on any electronic copies.

Revisions

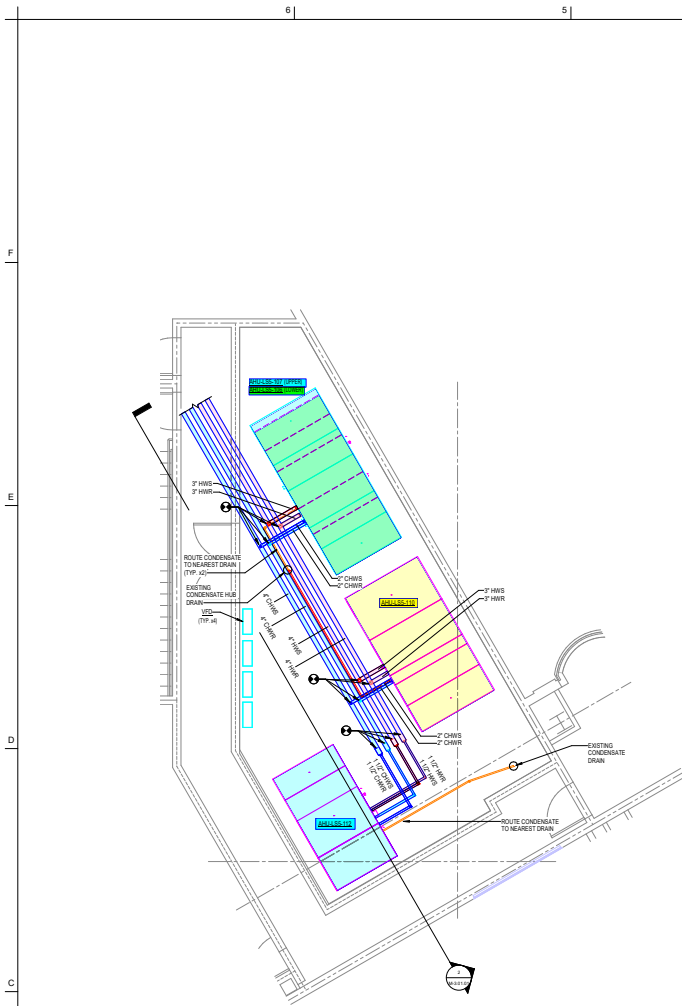
No.	Date	Description



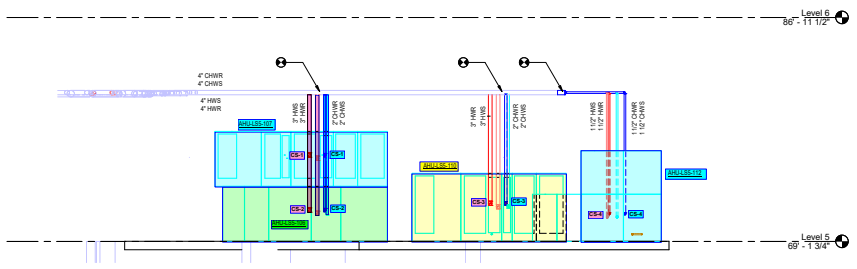
Key Plan
Project No.: 19013.0001
Designed By: OD
Drawn By: AP
Checked By: OD
Issue Date: 02/20/2025
Drawing Scale: 1/4" = 1'-0"
Drawing Title:

MECHANICAL
ENLARGED PLANS -
N.E. MECH. ROOM -
LEVEL 5

Drawing No.
M-2.01.02



1/4" = 1'-0"
 1/4" = 1'-0"
FIFTH LEVEL BALLROOM HVAC PLAN - AREA D - S.W. MECH. ROOM - PIPING



1/4" = 1'-0"
 1/4" = 1'-0"
AHU-LS5-106, 107, & 110 SECTION - PIPING



GREATER ORLANDO AVIATION AUTHORITY
V01050
Landside Terminal
Levels 4 and 5
HYATT CONTINENTAL
BALLROOM &
PRE-FUNCTION RENO
 ORLANDO INTERNATIONAL AIRPORT



rhodes + brito
 ARCHITECTS
 605 E ROBINSON ST, SUITE 750
 ORLANDO, FL 32801
 FBAD Lic: AR0014284

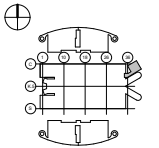


TLC ENGINEERING
 255 S. Orange Avenue
 Suite 102
 Orlando, FL 32801
 P: 407.841.1000
 www.tlc-engineering.com
 COA 15
 P: 407.841.1000
 TLC No. 119108
 THERM, EARTH, SOLAR, AIR

This item has been electronically signed and sealed by the individual named below, using a dated Digital Signature in the space below, per F.A.C. Rule 61G-15-2.004. Printed copies of this document are not considered signed and sealed and the signature must be verified on any electronic copies.

Revisions

No.	Date	Description



Key Plan
 Project No.: 19013.0001
 Designed By: OD
 Drawn By: AP
 Checked By: OD
 Issue Date: 02/20/2025
 Drawing Scale: 1/4" = 1'-0"
 Drawing Title:
MECHANICAL
ENLARGED PIPING
PLANS - S.W. MECH.
ROOM - LEVEL 5

Drawing No.
M-3.01.01

