

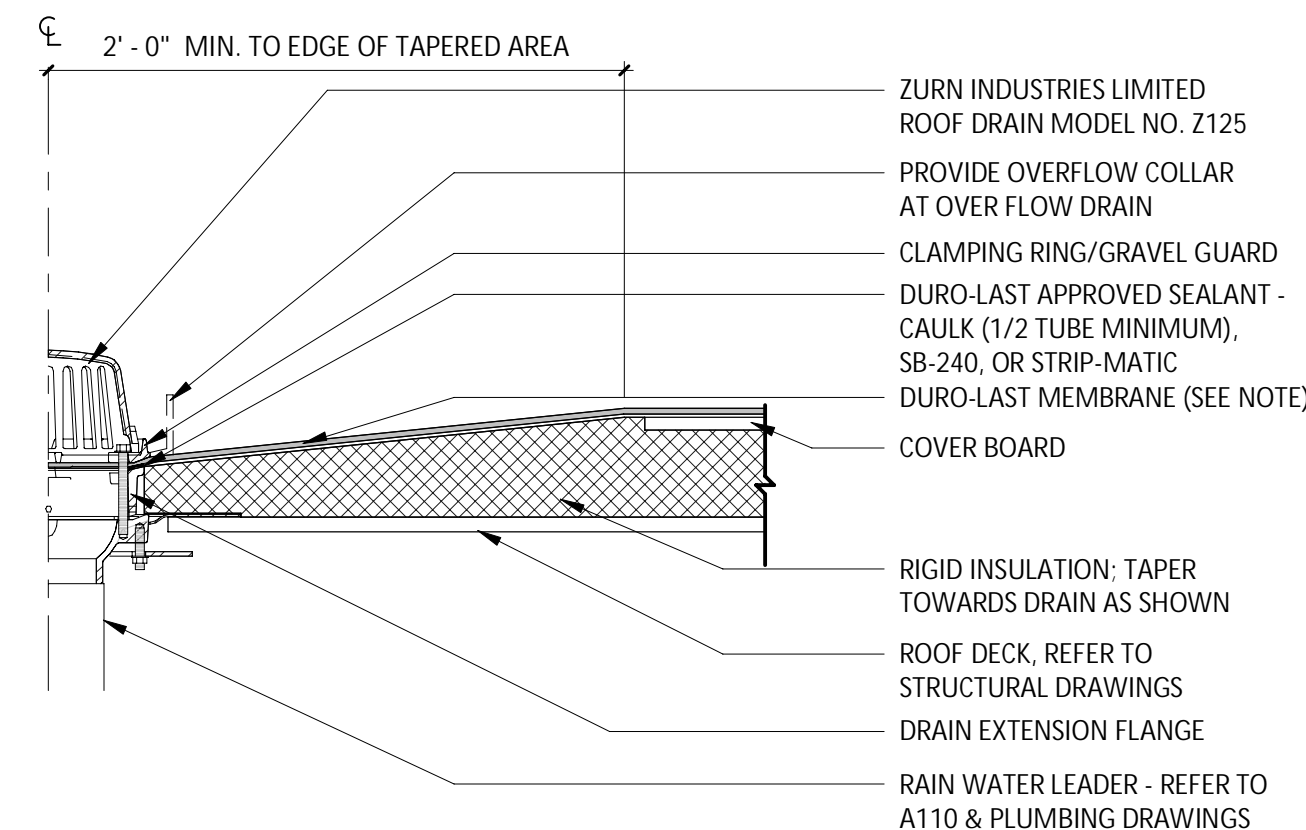
HVAC EQUIPMENT

NOTE: UTILITIES BY GC, REFER TO MECHANICAL DRAWINGS.

DESCRIPTION	SUPPLIED BY	INSTALLED BY	UTILITY				REMARKS
			ELEC	GAS	WATER	SEWER	
EXHAUST FANS & CURBS	HS	GC					CURB FURNISHED BY HS, INSTALLED BY GC
MAKE UP AIR UNIT & CURBS	HS	GC					CURB FURNISHED BY HS, INSTALLED BY GC
ROOF TOP UNITS & CURBS	HES	GC					CURB FURNISHED BY HS, INSTALLED BY GC
TEST & BALANCE SYSTEM	TAB	-					FURNISH HVAC TEST & BALANCE PER TENANT'S NATIONAL ACCOUNT PROGRAM.

Consultant:
BAKA
ARCHITECTS

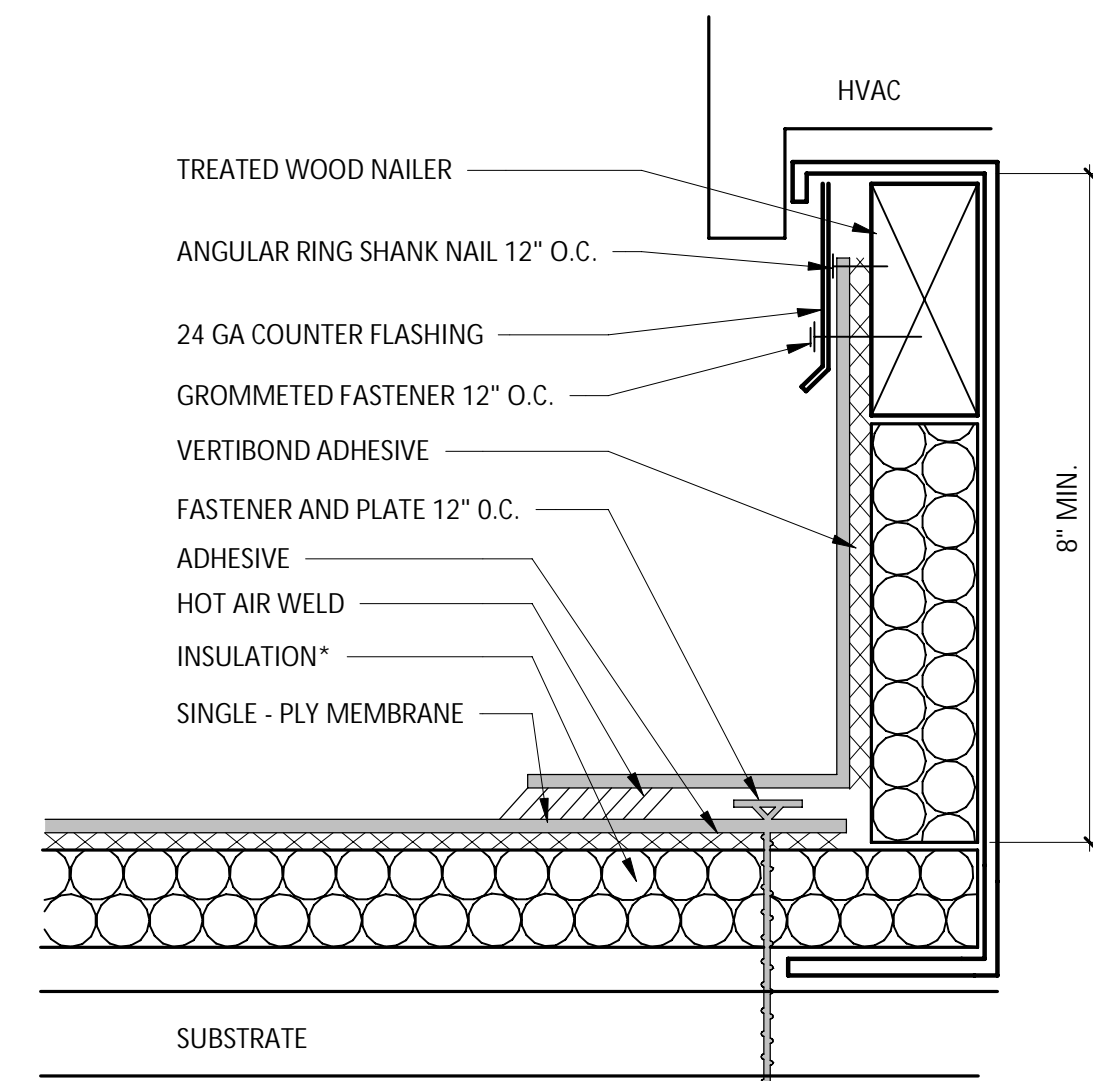
BAKA Architects, Inc.
Boston + Tampa
bkaarchitects.com



NOTE:
DURO-LAST MEMBRANE MUST EXTEND BEHIND THE INSIDE OF THE CLAMPING RING. BE SURE THE OPENING WHERE WATER PASSES THROUGH THE MEMBRANE IS NOT SMALLER THAN THE OPENING OF THE DRAIN.

ROOF DRAIN DETAIL

4
A140
1/2" = 1'-0"

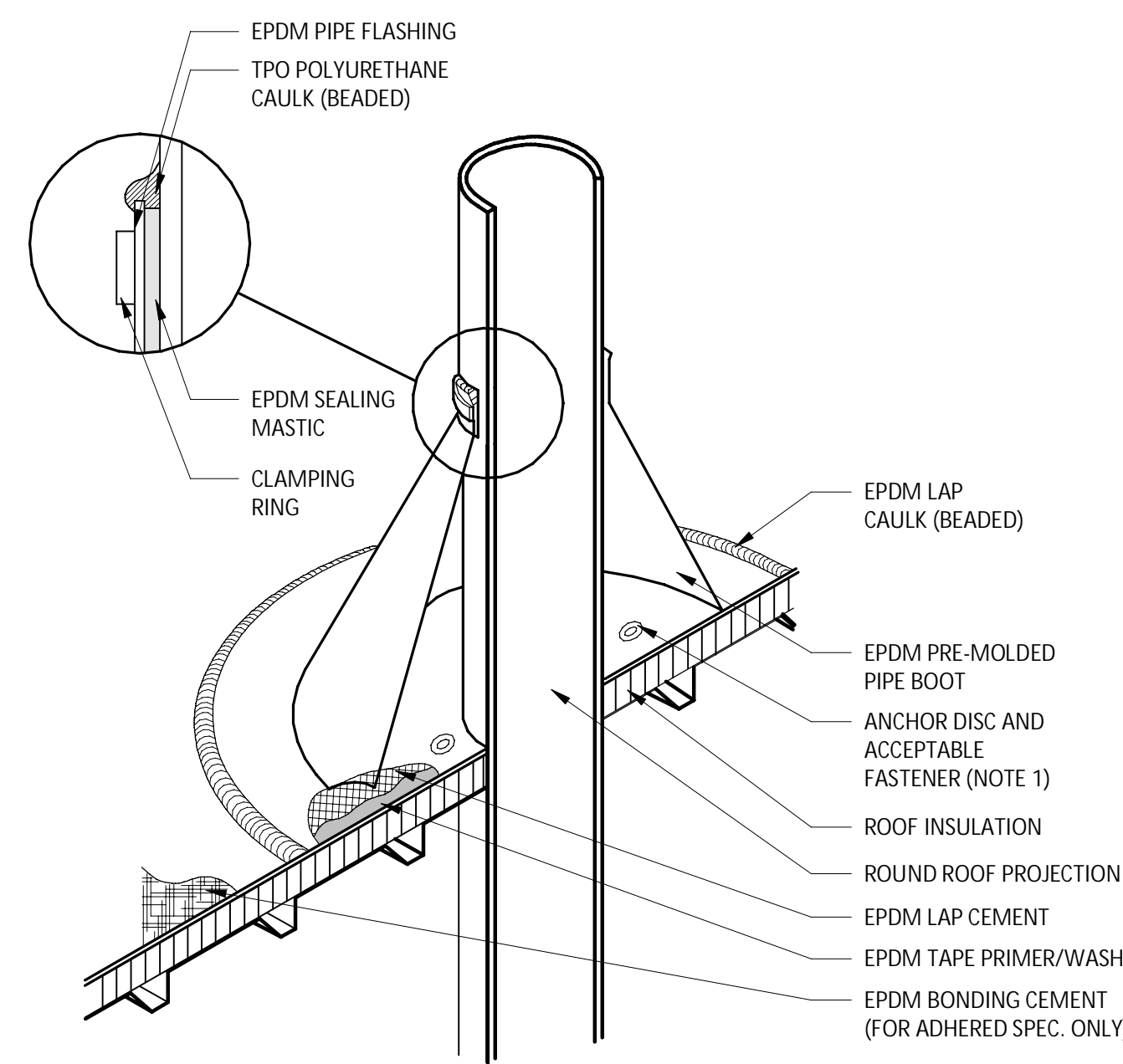


NOTES:

1. INSTALLATION TO BE COMPLETED IN ACCORDANCE WITH MANUFACTURERS SPECIFICATIONS.
2. DO NOT SCALE DRAWINGS.
3. USE PREFABRICATED OUTSIDE CORNERS.
4. INSULATION MUST BE SECURELY FASTENED.
5. *GLASS-FACED POLYISO INSULATION IS OPTIONAL AND MAY NOT BE REQUIRED ON EVERY PROJECT. IF INSULATION IS NOT REQUIRED, THE MEMBRANE MUST BE ADHERED TO AN APPROVED SURFACE.

CURB FLASHING

3
A140
1/2" = 1'-0"

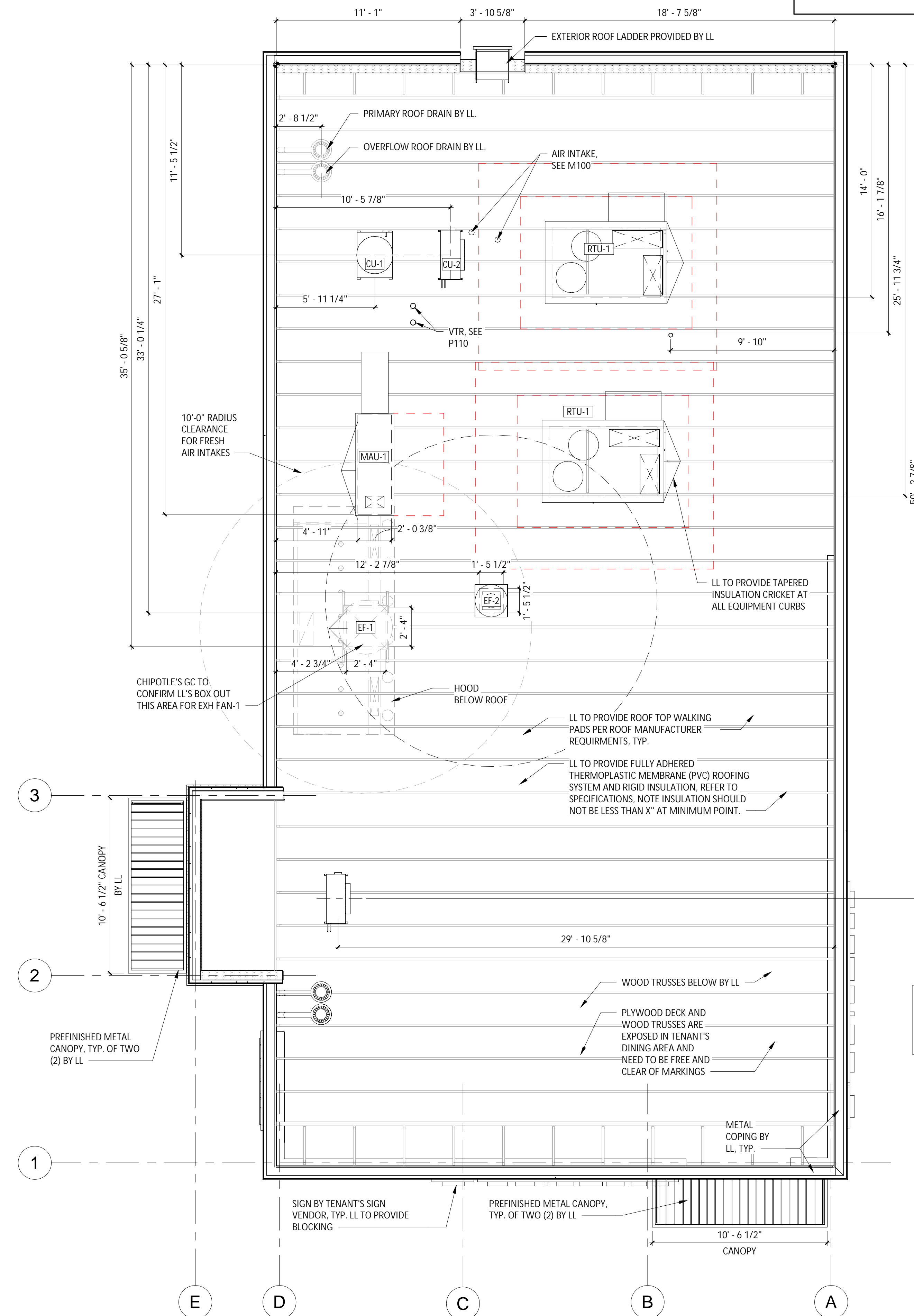


NOTE:

1. WITH MECHANICALLY FASTENED OR BALLASTED SPECIFICATIONS, MEMBRANE MUST BE MECHANICALLY ATTACHED WITH 2" (50 mm) ANCHOR DISC AND ACCEPTABLE FASTENERS (MINIMUM OF 4 PER PIPE).
2. DO NOT OVERLAP THE FLANGES FROM ADJACENT PIPE FLASHINGS.
3. ANY SEAM UNDER BOOT FLANGE TO BE TREATED AS T-JOINT.
4. BOTH SURFACES TO BE MATED MUST BE CLEANED WITH TAPE PRIMER/WASH. EPDM TAPE PRIMER/WASH MUST BE COMPLETELY DRY AND TACK FREE BEFORE APPLYING EPDM LAP CEMENT.

BOOT DETAIL

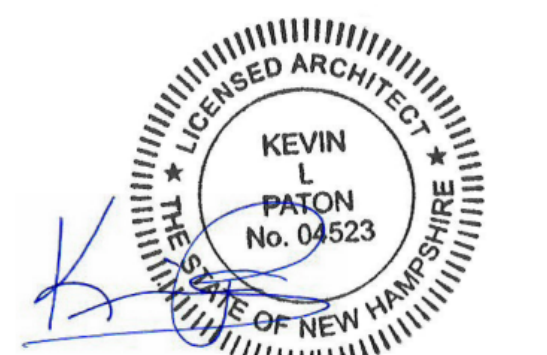
2
A140
1/2" = 1'-0"



GENERAL ROOF NOTES

1. SEE STRUCTURAL DRAWINGS FOR LOCATIONS AND SIZE OF STRUCTURAL ROOF REINFORCEMENTS.
2. SEE MECHANICAL PLANS FOR ROOF TOP EQUIPMENT.
3. COORDINATE ALL ROOF PENETRATIONS, FLASHING, AND REPAIR W/ TENANT ROOF TOP EQUIPMENT PRIOR TO COMMENCEMENT OF WORK.
4. DIMENSIONS FOR ROOF TOP EQUIPMENT WITH CURBS IS TO THE OUTSIDE FACE OF THE CURB. DIMENSIONS FOR EQUIPMENT WITHOUT CURBS ARE TO THE CENTER OF THE UNIT. ALL DIMENSIONS ARE FOR REFERENCE ONLY. ROOFING CONTRACTOR TO ADJUST AS NECESSARY IN FIELD. CONTACT ENGINEERING CONSULTANTS FOR ANY MAJOR MODIFICATIONS TO LAYOUT.
5. JOISTS FOR SHELL BUILDING ARE TO BE DESIGNED FOR THE RTU WEIGHTS AND PLACEMENT EXHIBITED. IF LOCATION OR ORIENTATION OF A UNIT MUST CHANGE, NOTIFY ARCHITECT IMMEDIATELY.
6. SEE M700 FOR PENETRATION DETAILS AT RTUS AND THE EXHAUST FAN.
7. PROVIDE INSULATED CURBS FOR ALL EQUIPMENT IN EXPOSED DECK AREA ONLY.
8. PROVIDE TAPERED INSULATION CRICKET AT ALL EQUIPMENT CURBS.
9. LOCATE ALL UNITS SO DUCT DROPS BETWEEN TRUSS JOISTS. NOTIFY ARCHITECT IMMEDIATELY IF ANY UNITS NEED TO SHIFT FROM PLAN LOCATION SHOWN.

Seal:



COPYRIGHT 2024
THIS DRAWING IS AN INSTRUMENT OF SERVICE AND AS SUCH REMAINS THE PROPERTY OF CHIPOTLE MEXICAN GRILL, INC. PERMISSION FOR USE OF THIS DOCUMENT IS LIMITED AND CAN BE EXTENDED ONLY BY WRITTEN AGREEMENT WITH CHIPOTLE MEXICAN GRILL, INC.



STORE NO.: 5434
CONCORD NORTH
10 WHITNEY RD CONCORD, NH 03301

Issue Record:
03/08/2021 COMBINED PROTO RELEASE

Revisions:

Drawn: _____ Checked: _____
AUTHOR CHECKER

Project No.
CMG 5434

Contents:
ARCHITECTURAL ROOF PLAN

A140

1
A140
1/4" = 1'-0"
ROOF PLAN

