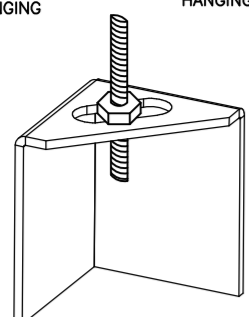


ND-2 HANGING ANGLE DETAIL

1/2" DIA. ALL THREAD ROD CONNECTED TO ROOF JOIST THROUGH ANOTHER HANGING ANGLE



*ROD AND NUTS TO BE SUPPLIED BY INSTALLING CONTRACTOR HANGING ANGLE IS PRE-FINISHED AT FACTORY.

HANGING ANGLE LOCATIONS

| HOOD STYLE | DIM FROM REAR | DIM FROM FRONT (24" H) | DIM FROM FRONT (30" H) |
|-------------------------|---------------|------------------------|------------------------|
| CANOPY ND2 | 4.166" | 2.246" | 2.246" |
| ND2-PSP-F | 4.166" | 2.246" | 2.246" |
| BACKSHELF BD-2 | 4.166" | 2.246" | - |
| VHB/VHB-G | 36"x36" | 42"x42" | 48"x48" |
| FRONT/BACK DIMS BY SIZE | 2.246" | 2.246" | 2.246" |

CALCULATIONS UTILIZED

EXHAUST CFM=LENGTH OF HOOD X CFM/LIN.FT. (LOAD)
 SUPPLY CFM=EXHAUST CFM X PERCENTAGE REQUIRED
 TOTAL DUCT AREA=144 X $\frac{CFM}{FPM}$
 DUCT LENGTH= $\frac{TOTAL DUCT AREA}{DUCT DEPTH}$

*CAPTIVE-AIRE DUCT CONNECTION SIZES ARE CALCULATED USING AN EXHAUST VELOCITY OF 1500-1800 FPM AND A SUPPLY VELOCITY OF 300-400 FPM

BUILDING CODES

CAPTIVE-AIRE HOODS ARE BUILT IN COMPLIANCE WITH:



Listed under ETL File number 3054804-001/002

CLEARANCE TO COMBUSTIBLES

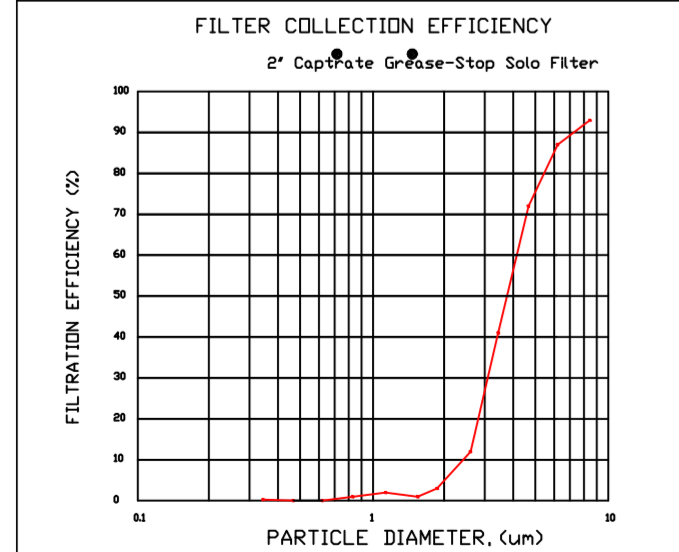
CAPTIVE-AIRE HOODS HAVE OPTIONAL CLEARANCE REDUCTION SYSTEMS AVAILABLE AS FOLLOWS:

| MATERIAL | CLEARANCE REDUCTION SYSTEM |
|---------------------|----------------------------|
| NON-COMBUSTIBLE | NONE REQUIRED |
| LIMITED-COMBUSTIBLE | 3" UNINSULATED STANDOFF |
| COMBUSTIBLE | 1" INSULATED STANDOFF |

GENERAL NOTES

- INSTALLATION**
- ALL ELECTRICAL "FIELD" CONNECTIONS AND RELATED INTERCONNECTIONS BY ELECTRICAL CONTRACTORS.
 - ALL PLUMBING "FIELD" CONNECTIONS AND RELATED INTERCONNECTIONS BY PLUMBING CONTRACTORS.
 - HANGING BRACKETS LOCATED AND WELDED AS SHOWN ON PLANS. ALL OTHER HANGER MATERIALS PROVIDED BY INSTALLING CONTRACTORS.
 - ALL CONNECTIONS FROM CAPTIVE-AIRE DUCT PER MECHANICAL CONTRACTORS' PLANS.
 - COOKING EQUIPMENT TO SHUTOFF IN EVENT OF FIRE.
 - EXHAUST FANS TO TURN ON IN EVENT OF FIRE.
 - ALL LIGHTS FIXTURE SHOWN INSTALLED BY CAPTIVE-AIRE ARE FACTORY PREWIRED. INTERCONNECTIONS BETWEEN HOODS AND TO SWITCHES BY ELECTRICAL CONTRACTORS.
 - LAMPS FOR LIGHT FIXTURES PROVIDED BY INSTALLING CONTRACTORS.
 - SEISMIC RESTRAINTS ARE RESPONSIBILITY OF INSTALLING CONTRACTOR.
 - INSTALLING CONTRACTORS ASSUME ALL RELATED RESPONSIBILITY FOR VERIFICATION OF DIMENSIONAL DATA CONTAINED ON THESE DOCUMENTS FOR ACCURACY, INTEGRATION, AND ADMINISTRATION OF CODE REQUIREMENTS IN EFFECT PRIOR TO ANY RELEASE FOR PRODUCTION OF EQUIPMENT SHOWN.
- BALANCE**
- KITCHEN HOODS MUST BE BALANCED WITH KITCHEN. KITCHEN SHALL BE NEGATIVE WITH RESPECT TO DINING AREA.
 - RESTAURANT SHALL BE POSITIVE WITH RESPECT TO AMBIENT PRESSURE.
- ADDITIONAL**
- WRITTEN HOOD DIMENSIONS HAVE PRECEDENCE OVER SCALE.
 - SIGNED AND "APPROVED" COPIES OF THIS DOCUMENT MUST BE RECEIVED BY THE FACTORY PRIOR TO COMMENCEMENT OF FABRICATION.

FILTER DETAIL



CaptiveAire Captrate Solo Filter
 ETL Listed Grease Extracting Hood
 Made From 430 Stainless Steel

HOOD INFORMATION - JOB#5545865

| HOOD NO | TAG | MODEL | MANUFACTURER | LENGTH | MAX COOKING TEMP DEG | TYPE | APPLIANCE DUTY | DESIGN CFM/FT | TOTAL EXH CFM | EXHAUST FLENUM (RISERS) | | | | TOTAL SUPPLY CFM | HOOD CONSTRUCTION | HOOD CONFIG | | | |
|---------|---------|-------------------|--------------|---------|----------------------|------|----------------|---------------|---------------|-------------------------|------|--------|------|------------------|-------------------|-------------|---------------|-------|------------|
| | | | | | | | | | | WIDTH | LENG | HEIGHT | DIA | | | CFM | VEL | SP | END TO END |
| 1 | ITEM 52 | 5424 ND-2-PSP-F | CAPTIVEAIRE | 12' 11" | 450 DEG | I | MEDIUM | 235 | 3035 | 4" | 12" | 1517 | 1932 | -1.074" | 2090 | 430 SS | LEFT | BACK | |
| 2 | ITEM 52 | 5424 ND-2-PSP-F | CAPTIVEAIRE | 7' 5" | 450 DEG | I | MEDIUM | 180 | 1335 | 4" | 12" | 1335 | 1700 | -0.752" | 1115 | 430 SS | WHERE EXPOSED | RIGHT | BACK |
| 3 | ITEM 75 | 5424 VHB-PSP-F-ND | CAPTIVEAIRE | 13' 6" | 700 DEG | II | N/A | 160 | 2160 | 4" | 12" | 1080 | 1375 | -0.151" | 1795 | 430 SS | 100% | ALONE | FRONT |

PATENT NUMBERS

AC-PSP (UNITED STATES) - US PATENT 7963830 B2
 AC-PSP WALL (CANADA) - CA PATENT 2820509
 AC-PSP ISLAND (CANADA) - CA PATENT 2520330

HOOD INFORMATION

| HOOD NO | TAG | TYPE | QTY | FILTER(S) HEIGHT | EFFICIENCY @ 7 MICRONS | QTY | LIGHT(S) TYPE | WIRE GUARD LOCATION | SIZE | UTILITY CABINET(S) | | ELECTRICAL MODEL # | SWITCHES QUANTITY | FIRE SYSTEM | HOOD HANGING PIPING WEIGHT |
|---------|---------|-----------------------|-----|------------------|------------------------|-----|----------------|---------------------|------|--------------------|------|--------------------|-------------------|-------------|----------------------------|
| | | | | | | | | | | FIRE SYSTEM TYPE | SIZE | | | | |
| 1 | ITEM 52 | CAPTRATE SOLID FILTER | 9 | 16" | 85% SEE FILTER SPEC | 4 | RECESSED ROUND | NO | | | | | | NO | 782 LBS |
| 2 | ITEM 52 | CAPTRATE SOLID FILTER | 5 | 16" | 85% SEE FILTER SPEC | 2 | RECESSED ROUND | NO | | | | | | NO | 501 LBS |
| 3 | ITEM 75 | | 4 | | | 4 | RECESSED ROUND | NO | LEFT | 12"x54"x24" | | DCV-2111 | 1 LIGHT 1 FAN | NO | 674 LBS |

HOOD OPTIONS

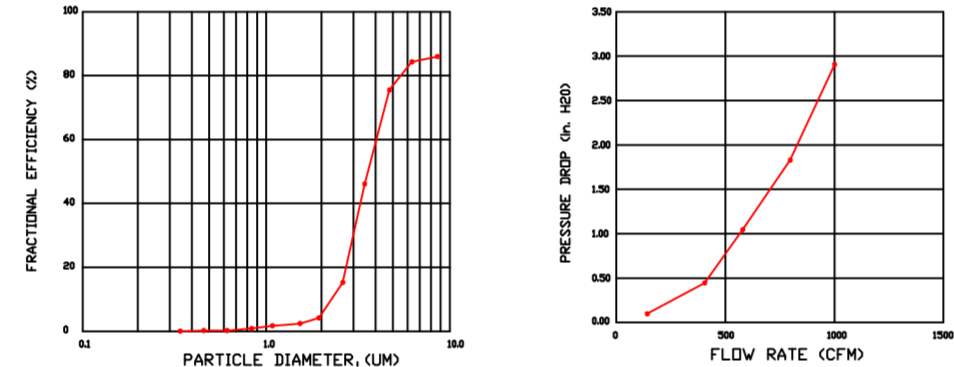
| HOOD NO | TAG | FIELD WRAPPER | 1800" HIGH | FRONT, LEFT. | OPTION |
|---------|---------|-------------------------------|---|-------------------|--------|
| 1 | ITEM 52 | RISER SENSOR INSTALL 3IN DBL. | | | |
| | | LEFT VIDE VERTICAL END PANEL | 42" TOP WIDTH, 36" BOTTOM WIDTH, 80" HIGH | INSULATED 430 SS. | |
| 2 | ITEM 52 | RISER SENSOR INSTALL 3IN DBL. | | | |
| | | RIGHT VERTICAL END PANEL | 27" TOP WIDTH, 21" BOTTOM WIDTH, 80" HIGH | INSULATED 430 SS. | |
| 3 | ITEM 75 | RISER SENSOR INSTALL 3IN DBL. | | | |
| | | RIGHT QUARTER END PANEL | 23" TOP WIDTH, 0" BOTTOM WIDTH, 23" HIGH | 430 SS. | |
| | | LEFT QUARTER END PANEL | 23" TOP WIDTH, 0" BOTTOM WIDTH, 23" HIGH | 430 SS. | |

PERFORATED SUPPLY PLENUM(S)

| HOOD NO | TAG | PDS | LENGTH | WIDTH | HEIGHT | TYPE | RISERS(S) | | | |
|---------|---------|-------|--------|-------|--------|------|-----------|------|-----|--------|
| | | | | | | | WIDTH | LENG | DIA | CFM |
| 1 | ITEM 52 | Front | 155' | 14" | 6" | MUA | 12" | 28" | 696 | 0.183" |
| 2 | ITEM 52 | Front | 89' | 14" | 6" | MUA | 12" | 28" | 557 | 0.121" |
| 3 | ITEM 75 | Front | 174' | 12" | 6" | MUA | 8" | 36" | 598 | 0.138" |

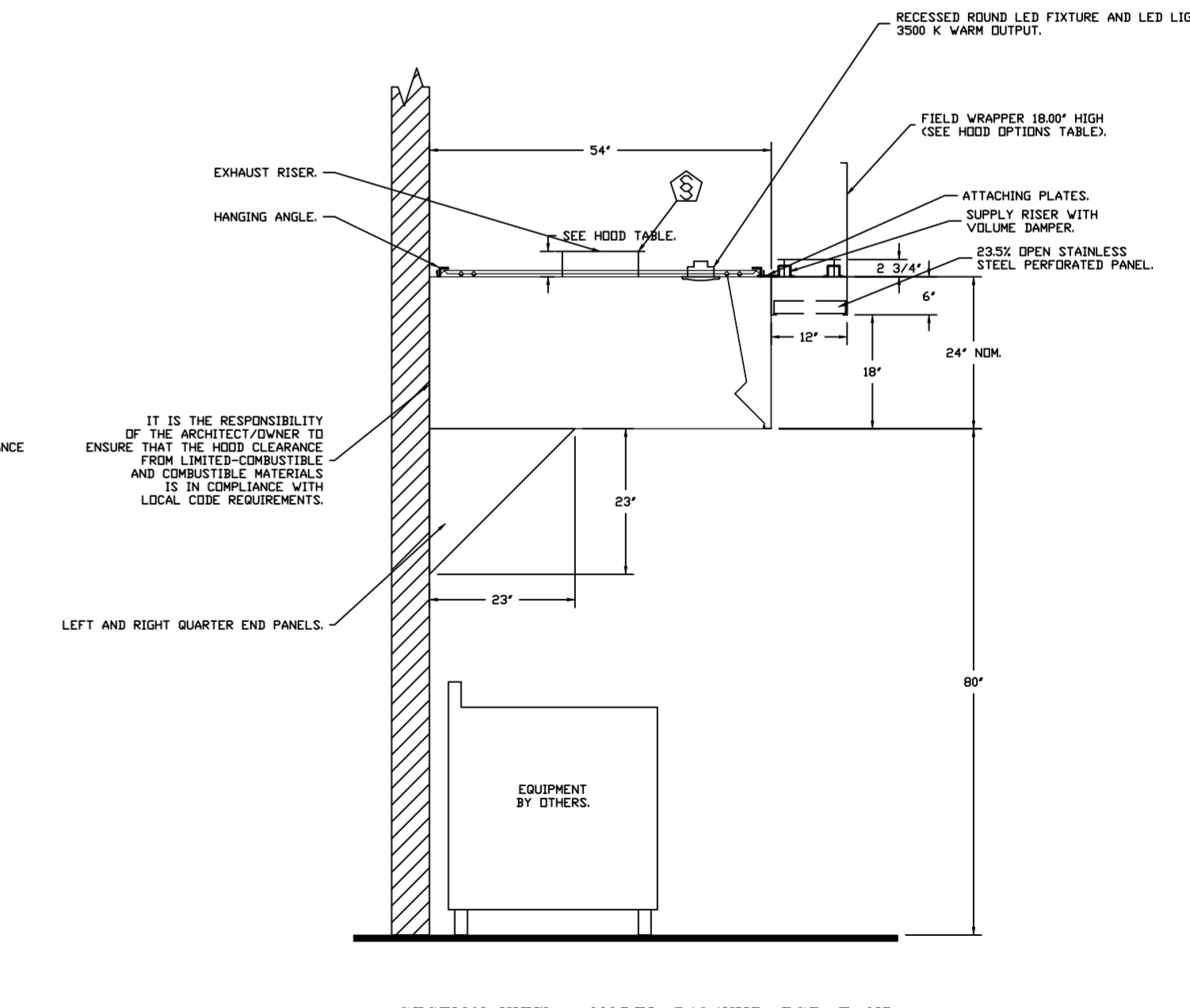
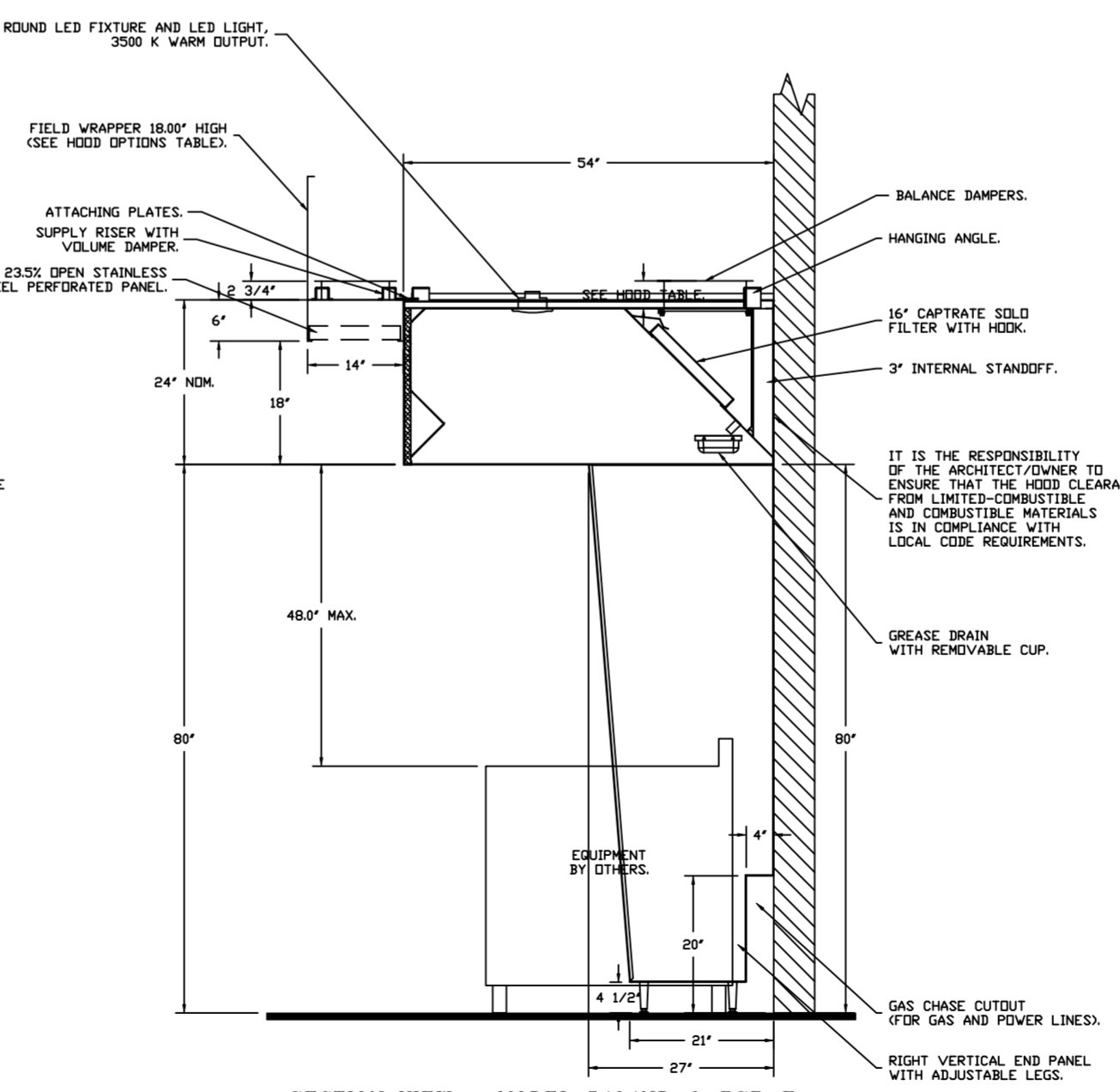
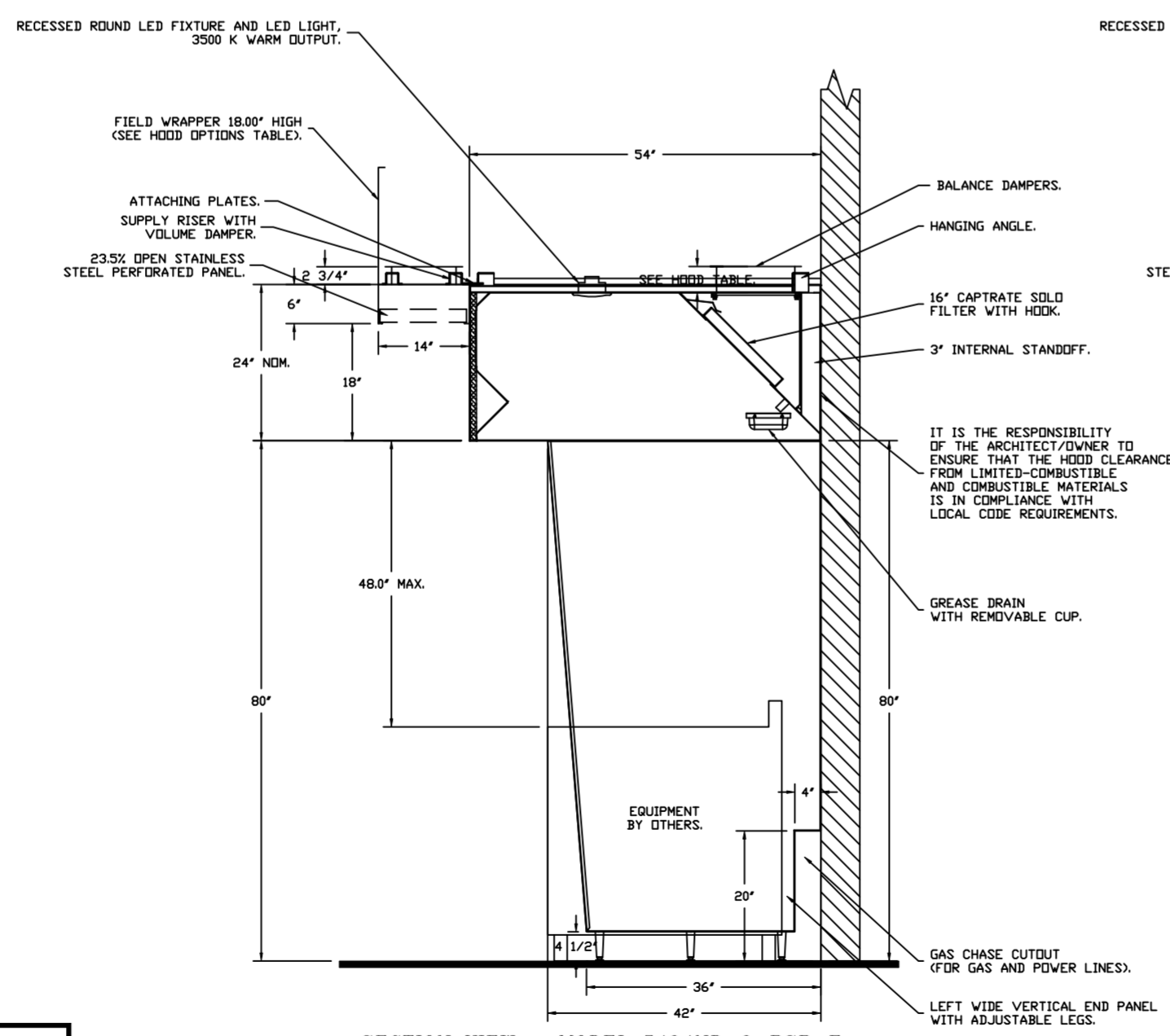
SPECIFICATION: CAPTRATE® GREASE-STOP® SOLID FILTER

THE CAPTRATE GREASE-STOP SOLID FILTER IS A SINGLE-STAGE FILTER FEATURING A UNIQUE S-Baffle DESIGN IN CONJUNCTION WITH A SLOTTED REAR Baffle DESIGN, TO DELIVER EXCEPTIONAL FILTRATION EFFICIENCY. FILTER IS STAINLESS STEEL CONSTRUCTION, AND SIZED TO FIT INTO STANDARD 2-INCH DEEP HOOD CHANNEL(S). UNITS SHALL INCLUDE STAINLESS STEEL HANDLES AND A FASTENING DEVICE TO SECURE THE TWO COMPONENTS WHEN ASSEMBLED. GREASE EXTRACTION EFFICIENCY PERFORMANCE SHALL REMOVE AT LEAST 75% OF GREASE PARTICLES FIVE MICRONS IN SIZE, AND 80% GREASE PARTICLES SEVEN MICRONS IN SIZE AND LARGER, WITH A CORRESPONDING PRESSURE DROP NOT TO EXCEED 1.0 INCHES OF WATER GAUGE. THE CAPTRATE GREASE-STOP SOLID WAS TESTED TO ASTM STANDARD ASTM F2519-05. MANUFACTURER APPROVED FOR USE IN SOLID APPLICATIONS AS A SPARK ARRESTER. EFFICIENCY VS. PARTICLE DIAMETER



CAPTRATE FILTERS ARE BUILT IN COMPLIANCE WITH:

NSF #36,
 NSF STANDARD #2,
 UL STANDARD #104G,
 INT. MECH. CODE (IMC),
 ULC-3649.



PLAN VIEW - HOOD #2 (ITEM 52)
 7' 5.00" LONG 5424ND-2-PSP-F

NOTE: ADDITIONAL HANGING ANGLES PROVIDED FOR HOODS 12" AND LONGER.

PLAN VIEW - HOOD #1 (ITEM 52)
 12' 11.00" LONG 5424ND-2-PSP-F

PLAN VIEW - HOOD #3 (ITEM 75)
 13' 6.00" LONG 5424VHB-PSP-F-ND

NOTE: ADDITIONAL HANGING ANGLES PROVIDED FOR HOODS 12" AND LONGER.

FOR QUESTIONS, CALL THE:
 KANSAS CITY REGIONAL OFFICE
 1126 SWIFT STREET, KANSAS CITY, MO 64116
 PHONE: (816) 221-8575
 FAX: (816) 221-8311

CUSTOMER APPROVAL TO MANUFACTURE:

Approved as Noted
 Approved with NO Exception Taken
 Revise and Resubmit
 SIGNATURE: _____ Date: _____

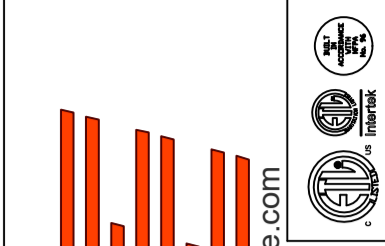
***** NOTE *****
 ALL WALLS AND STRUCTURES THAT COME WITHIN 18" OF HOOD MUST BE METAL STUDS AND SHEETROCK. WOOD STUDS OR ANY OTHER COMBUSTIBLE MATERIAL WITHIN 18" OF HOOD NO ALLOWED.

***** NOTE *****
 HOOD MANUFACTURER RECOMMENDS NO RETURNS OR 4-WAY DIFFUSERS WITHIN 10 FEET OF HOOD IN ALL DIRECTION.

***** NOTE *****
 MAKEUP AIR SHALL BE DELIVERED INTO SPACE IN MANNER THAT WILL NOT DISRUPT HOODS ABILITY TO CAPTURE AND CONTAIN.

REVISIONS

| DESCRIPTION | DATE: |
|-------------|-------|
| | |
| | |
| | |
| | |



www.captiveaire.com

CAPTIVEAIRE

HBT Foodservice
 104 W 8th St Suite 204, Kansas City, MO 64105
 PHONE: (816) 221-8575 FAX: (816) 221-8311
 EMAIL: reg9@capthive.com

DATE: 7/18/2022

DWG.#: 5545865

DRAWN BY: michael.co

SCALE: 1/2" = 1'-0"

MASTER DRAWING

SHEET NO. 1

