



## SUBMITTAL

### Project

BCF - Cape Coral, FL #1450(2301 Del Prado Blvd S)(PP Subs)

### Date

Monday, April 24, 2023

<b>TAGS ENGINEERING</b>	
<input checked="" type="checkbox"/> REVIEWED	<input type="checkbox"/> EXCEPTIONS NOTED
<input type="checkbox"/> REJECTED	<input type="checkbox"/> REVISE AND RESUBMIT
<p>Review of shop drawings, product data and other submittals is only for general conformance with the design concept and information in the drawings and specifications. The review excludes any responsibility for any dimensions, information that pertains to the fabrication process, the means, methods, techniques, sequences and procedures of construction, coordination of the work or any of its components, and safety, all of which remain the responsibility of others. Tags Engineering's action on any submittal shall not relieve Contractors, suppliers and manufacturers from any errors or omissions in the Submittal.</p>	
Reviewed By: <b>Michael Murphy</b>	
Date: <b>4/25/2023</b>	

### TAGS COMMENTS:

1.Submittal has been corrected for airflow and static pressure - but still does not match design entering air conditions. Submittal does match tonnage of scheduled equipment so this is primarily a record item.

2.Proposed units are not provided with electric heat. TAGS recommends electric heat to be provided even when a heat pump is applied. Electric heat operates as a backup to the heat pump, including any time the heat pump needs to defrost the outdoor coil. We discussed this with the vendor and it is a lesser concern in the south Florida environment.

3.Provide the following accessories / options per schedule notes(all are either missing or not specifically called out):

a.High and Low Pressure Switches

b.Supply Air Temperature Sensor.

c.Combo space temperature and relative humidity sensors

# Table Of Contents

Project: BCF - Cape Coral, FL #1450(2301 Del Prado Blvd S)(  
Prepared By:

04/24/2023  
03:45PM

<b>RTU - 5</b> .....	<b>3</b>
Unit Report.....	4
Certified Drawing.....	5
Performance Summary.....	9
<b>RTU - 6</b> .....	<b>12</b>
Unit Report.....	13
Certified Drawing.....	14
Performance Summary.....	18
<b>RTU - 7</b> .....	<b>21</b>
Unit Report.....	22
Certified Drawing.....	23
Performance Summary.....	27

**RTU - 5**

Project: BCF - Cape Coral, FL #1450(2301 Del Prado Blvd S)(  
Prepared By:

04/24/2023  
03:45PM

**RTU - 5**

**Tag Cover Sheet  
Unit Report  
Certified Drawing  
Performance Report**

## Unit Report For RTU - 5

Project: BCF - Cape Coral, FL #1450(2301 Del Prado Blvd S)  
 Prepared By:

04/24/2023  
 03:45PM

### Unit Parameters

Unit Model: **50GCQM06J3B6-3W4F0**  
 Unit Size: **06 (5 Tons)**  
 Volts-Phase-Hertz: **460-3-60**  
 Heating Type: **Heat Pump**  
 Heat Control: **Two Stage Cooling Models**  
 Duct Cfg: **Vertical Supply / Vertical Return**

### Dimensions (ft. in.) & Weight (lb.) \*\*\*

Unit Length: **6' 2.375"**  
 Unit Width: **3' 10.625"**  
 Unit Height: **3' 5.375"**  
**Total Operating Weight: 778 lb**

\*\*\* Weights and Dimensions are approximate. Weight does not include unit packaging. Approximate dimensions are provided primarily for shipping purposes. For exact dimensions and weights, refer to appropriate product data catalog.

### Lines and Filters

Return Air Filter Type: **Throwaway**  
 Return Air Filter Quantity: **4**  
 Return Air Filter Size: **16 x 16 x 2**

**Selection includes construction throwaway filter into the base fan curve.**

### Unit Configuration

Condensate Overflow Switch  
**Direct Drive - EcoBlue - High Static**  
 Precoat Al/Cu - Al/Cu  
 SystemVu Controls  
 Enthalpy Ultra Low Leak Econo w/Baro Relief  
 Hinged Panels and Unpowered Convenience Outlet  
 Non-Fused Disconnect and Thru-The-Base Connections  
 Standard Packaging

### Warranty Information

5-Year compressor parts (STD.)  
 1-Year parts (STD.)  
 Start-up, First Unit

**NOTE: Please see Warranty Catalog 500-089 for explanation of policies and ordering methods.**

### Ordering Information

Part Number	Description	Quantity
50GCQM06J3B6-3W4F0	Rooftop Unit	1
	Base Unit	
	Condensate Overflow Switch	
	Direct Drive - EcoBlue - High Static	
	Precoat Al/Cu - Al/Cu	
	Hinged Panels and Unpowered Convenience Outlet	
	Non-Fused Disconnect and Thru-The-Base Connections	
	SystemVu controller, Ultra LOW LEAK EconoMi\$er2 enthalpy economizer with barometric relief. SystemV	
<b>Field Installed Accessories</b>		
33CENTSEN	Enthalpy Transmitter	1
33ZCT55SPT	Space Temp. with Override	1
CRRFCURB001A01	14-inch Tall Roof Curb	1

# Certified Drawing for RTU - 5

Project: BCF - Cape Coral, FL #1450(2301 Del Prado Blvd S)  
 Prepared By:

04/24/2023  
 03:45PM

- NOTES:
1. DIMENSIONS ARE IN INCHES. DIMENSIONS IN ( ) ARE IN MILLIMETERS.
  2. CENTER OF GRAVITY
  3. DIRECTION OF AIR FLOW
  4. ALL VIEW DRAWN USING 3RD ANGLE

UNIT	J	K
50GCO+04	33 3/8 [847]	18 5/8 [472]
50GCO+05	41 3/8 [1051]	18 5/8 [472]
50GCO+06	41 3/8 [1051]	18 5/8 [472]

**Carrier** UNITED TECHNOLOGIES  
 THIS DOCUMENT IS THE PROPERTY OF UTC CLIMATE, CONTROLS & SECURITY AND IS DELIVERED UPON THE EXPRESS CONDITION THAT THE CONTENTS WILL NOT BE DISCLOSED OR USED WITHOUT WRITTEN CONSENT.  
 SUBMISSION OF THESE DRAWINGS OR DOCUMENTS DOES NOT CONSTITUTE PART PERFORMANCE OR ACCEPTANCE OF CONTRACT.

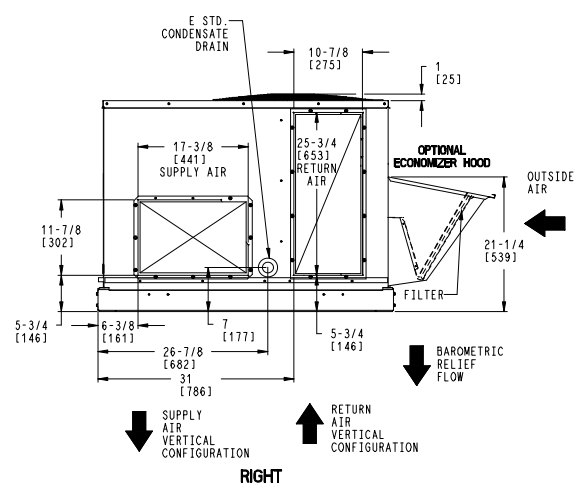
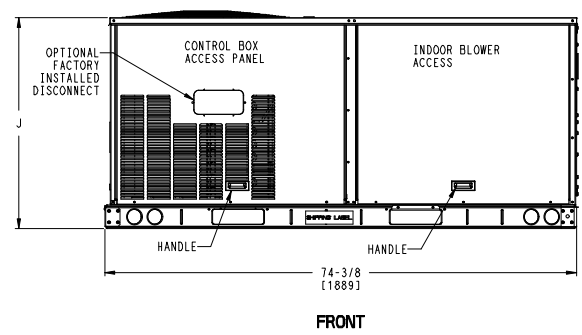
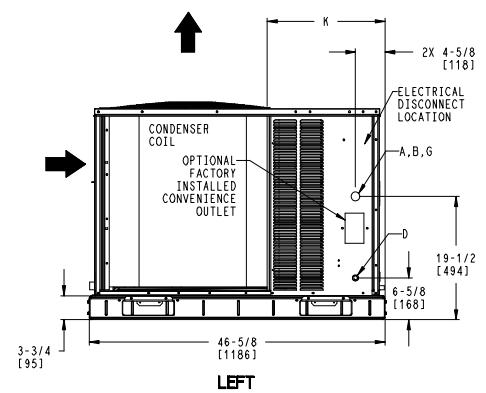
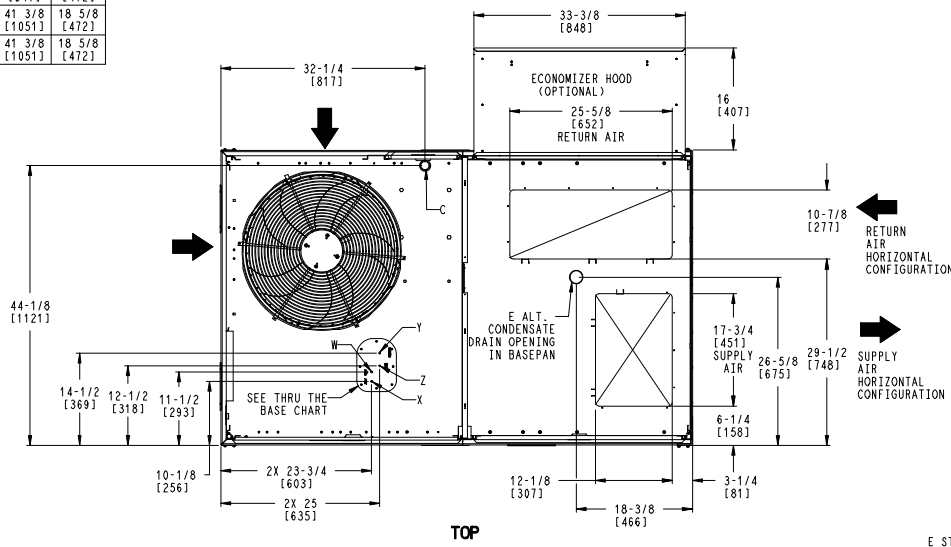
CONNECTION SIZES	
A	1 3/8" [35] DIA FIELD POWER SUPPLY HOLE
B	2" [51] DIA POWER SUPPLY KNOCKOUT
C	1 3/4" [44] DIA GAUGE ACCESS PLUG
D	7/8" [22] DIA FIELD CONTROL WIRING HOLE
E	3/4"-14 NPT CONDENSATE DRAIN
G	2 1/2" [64] DIA POWER SUPPLY KNOCK-OUT

THRU-THE-BASE CHART THESE HOLES REQUIRED FOR USE CRBTMPW008A00, 009A00			
	THREADED CONDUIT SIZE	WIRE USE	REQ'D HOLE SIZES (MAX.)
W	1/2"	115V	7/8" [22.2]
X	1/2"	24V	7/8" [22.2]
Y *	3/4"	POWER	1 1/8" [28.6]
Z **	(009A00) 1/2" FPT	GAS	1 1/8" [28.6]

FOR "THRU-THE-BASEPAN" FACTORY OPTION, FITTINGS FOR ONLY X, Y, & Z ARE PROVIDED

\* SELECT EITHER 3/4" OR 1/2" FOR POWER, DEPENDING ON WIRE SIZE

\*\* (008A00) PROVIDES 3/4" FPT THRU CURB FLANGE & FITTING.



ITC CLASSIFICATION	SHEET	DATE	SUPERCEDES	50GCO 04-06 SINGLE PACKAGE HEAT PUMP	48TC003351	REV
U.S. ECCN:NSR	1 OF 3	08/15/19	-			-

# Certified Drawing for RTU - 5

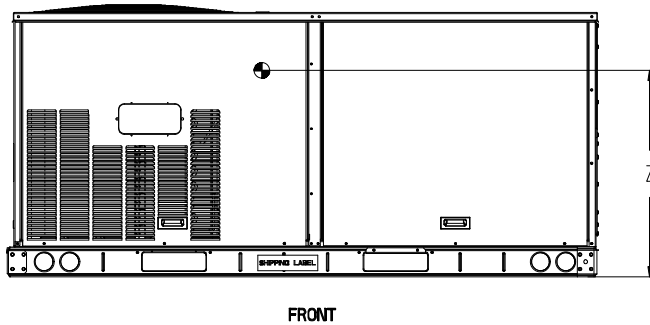
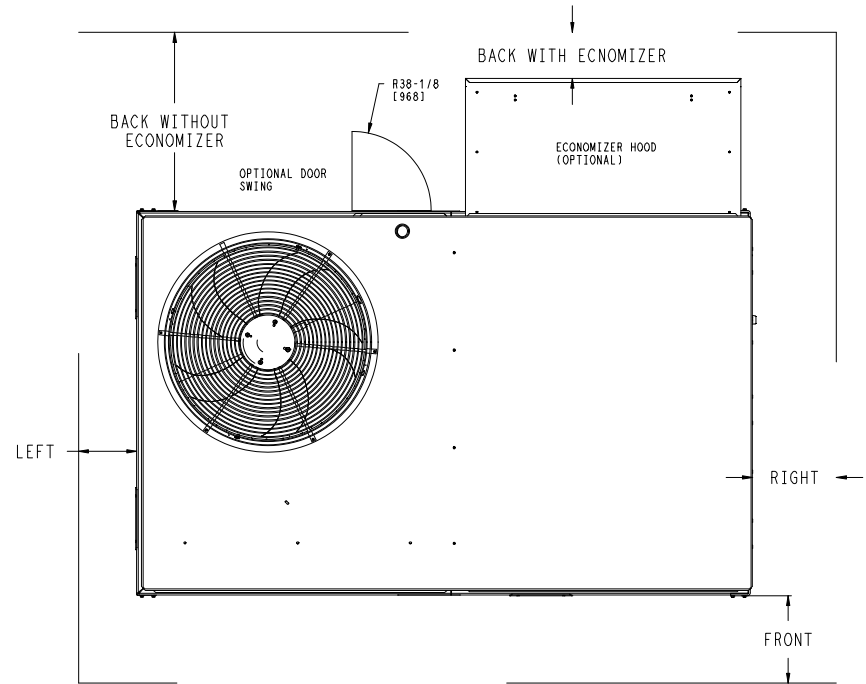
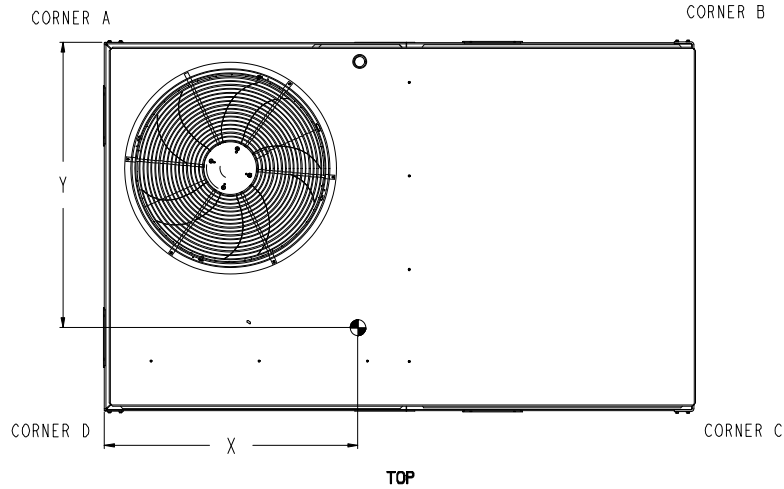
Project: BCF - Cape Coral, FL #1450(2301 Del Prado Blvd S)  
Prepared By:

04/24/2023  
03:45PM

UNIT	STD. UNIT WEIGHT *		CORNER WEIGHT (A)		CORNER WEIGHT (B)		CORNER WEIGHT (C)		CORNER WEIGHT (D)		C.G.		HEIGHT
	LBS.	KG.	LBS.	KG.	LBS.	KG.	LBS.	KG.	LBS.	KG.	X	Y	Z
50GCO*04	475	215	128	58	120	54	110	50	117	53	36 [914]	22 3/8 [568]	16 1/8 [410]
50GCO*05	590	268	162	73	147	67	134	61	148	67	35 3/8 [898]	22 5/16 [557]	16 1/2 [419]
50GCO*06	596	270	163	74	148	67	125	61	149	68	35 3/8 [898]	22 5/16 [557]	16 1/2 [419]

\* - STANDARD UNIT WEIGHT IS WITHOUT ELECTRIC HEAT AND WITHOUT PACKAGING.  
FOR OTHER OPTIONS AND ACCESSORIES REFER TO THE PRODUCT DATA CATALOG.

**Carrier** THIS DOCUMENT IS THE PROPERTY OF UTC CLIMATE, CONTROLS & SECURITY AND IS DELIVERED UPON THE EXPRESS CONDITION THAT THE CONTENTS WILL NOT BE DISCLOSED OR USED WITHOUT WRITTEN CONSENT. SUBMISSION OF THESE DRAWINGS OR DOCUMENTS DOES NOT CONSTITUTE PART PERFORMANCE OR ACCEPTANCE OF CONTRACT.



NOTE:  
1. FOR ALL MINIMUM CLEARANCES LOCAL CODES OR JURISDICTIONS MAY PREVAIL.

SURFACE	CLEARANCE		OPERATING CLEARANCE
	SERVICE WITH CONDUCTIVE BARRIER	SERVICE WITH NONCONDUCTIVE BARRIER	
FRONT	48 [1219mm]	36 [914mm]	18 [457mm]
LEFT	48 [1219mm]	42 [1067mm]	18 [457mm]
BACK W/O ECON	48 [1219mm]	42 [1067mm]	18 [457mm]
BACK W/ECON	36 [914mm]	36 [914mm]	18 [457mm]
RIGHT	36 [914mm]	36 [914mm]	18 [457mm]
TOP	72 [1829mm]	72 [1829mm]	72 [1829mm]

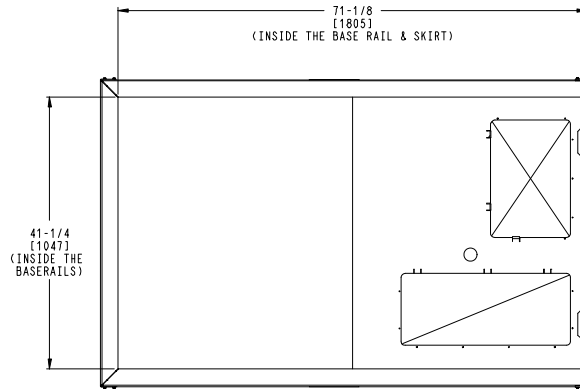
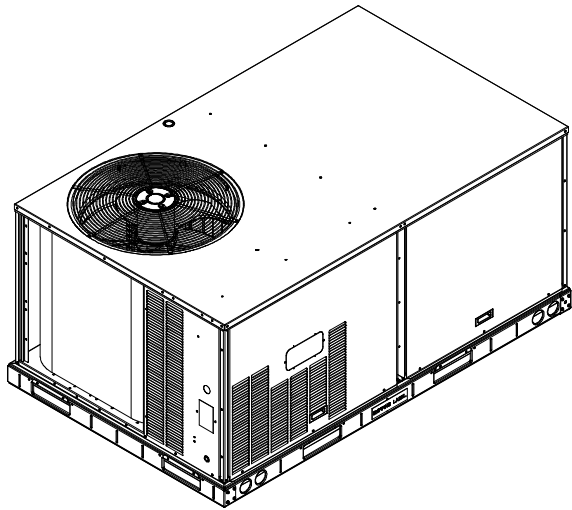
ITC CLASSIFICATION U.S. ECCN: NSR	SHEET 2 OF 3	DATE 08/15/19	SUPERCEDES -	50GCO 04-06 SINGLE PACKAGE HEAT PUMP	48TC003351	REV -
--------------------------------------	-----------------	------------------	-----------------	--------------------------------------	------------	----------

# Certified Drawing for RTU - 5

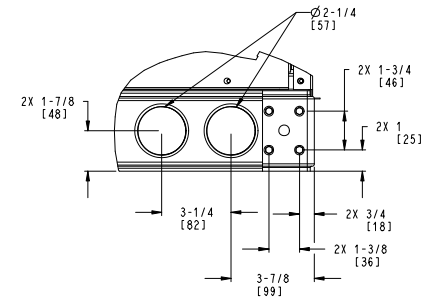
Project: BCF - Cape Coral, FL #1450(2301 Del Prado Blvd S)  
 Prepared By:

04/24/2023  
 03:45PM

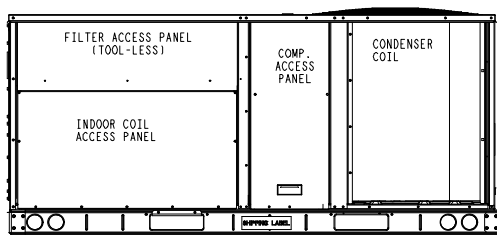
THIS DOCUMENT IS THE PROPERTY OF UTC CLIMATE, CONTROLS & SECURITY AND IS DELIVERED UPON THE EXPRESS CONDITION THAT THE CONTENTS WILL NOT BE DISCLOSED OR USED WITHOUT WRITTEN CONSENT.
 SUBMISSION OF THESE DRAWINGS OR DOCUMENTS DOES NOT CONSTITUTE PART PERFORMANCE OR ACCEPTANCE OF CONTRACT.



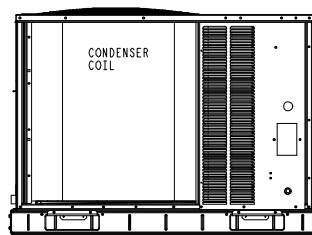
INSIDE BASERAIL DIMENSIONS  
**BOTTOM**



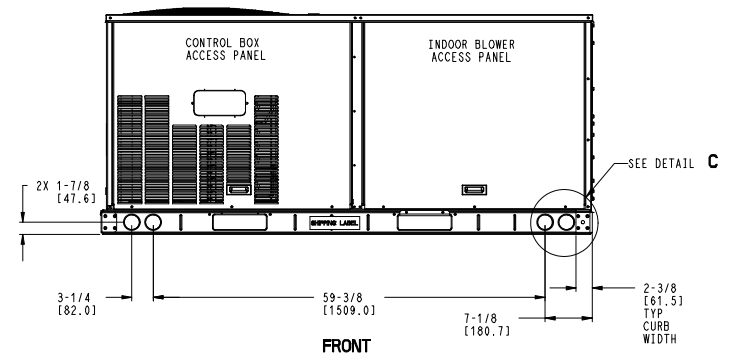
DETAIL **C**  
 TYP 4 PLCS



**BACK**



**LEFT**



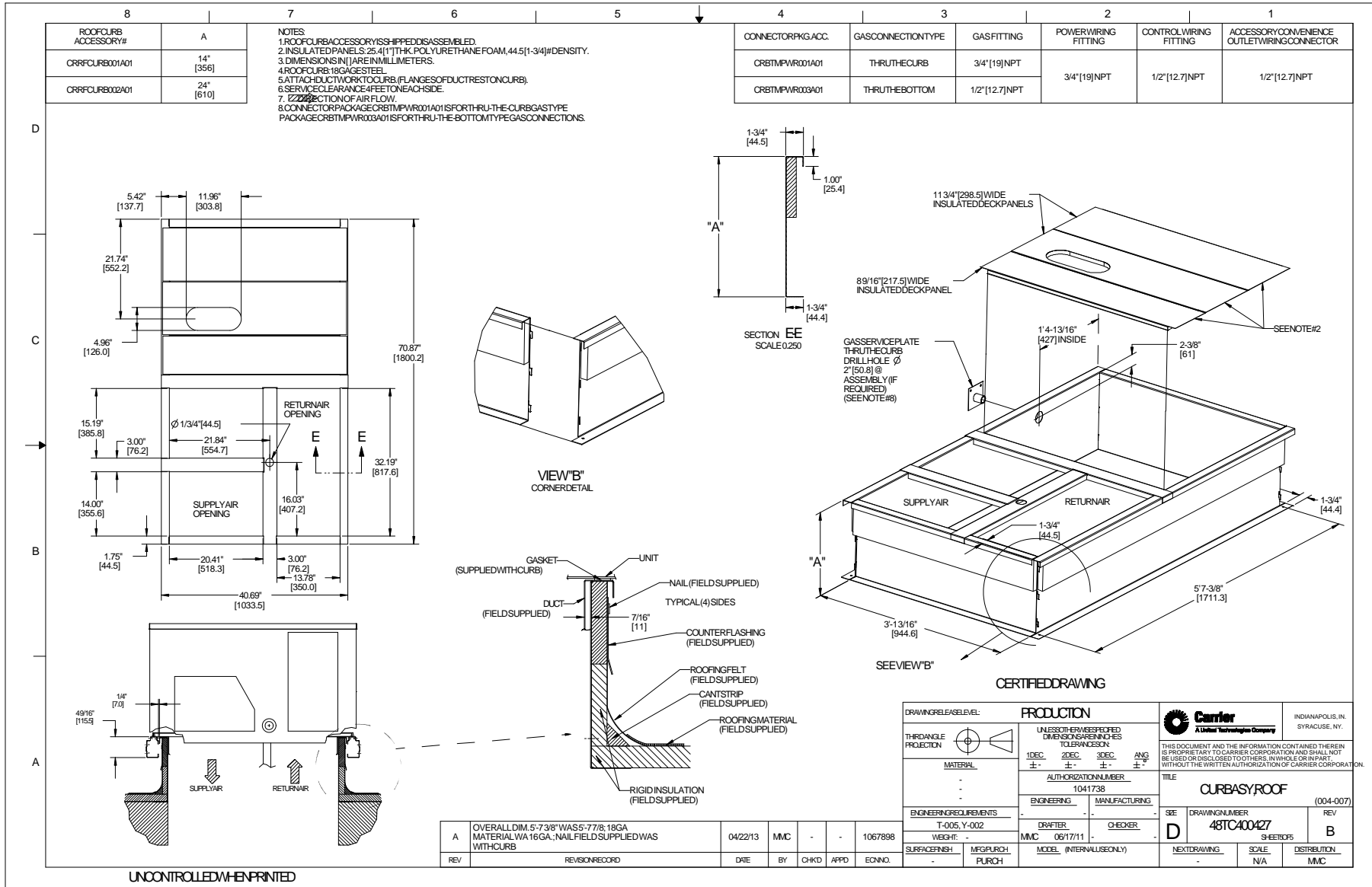
**FRONT**

ITC CLASSIFICATION	SHEET	DATE	SUPERCEDES	50GCQ 04-06 SINGLE PACKAGE HEAT PUMP	48TC003351	REV
U.S. ECCN: NSR	3 OF 3	08/15/19	-			-

# Certified Drawing for RTU - 5

Project: BCF - Cape Coral, FL #1450(2301 Del Prado Blvd S)  
Prepared By:

04/24/2023  
03:45PM



## Performance Summary For RTU - 5

Project: BCF - Cape Coral, FL #1450(2301 Del Prado Blvd S)  
 Prepared By:

04/24/2023  
 03:45PM

### Part Number:50GCQM06J3B6-3W4F0

ARI SEER:..... **16.20**

#### Base Unit Dimensions

Unit Length:..... 74.4 in  
 Unit Width:..... 46.6 in  
 Unit Height:..... 41.4 in

#### Operating Weight

Base Unit Weight:..... **596** lb  
 Condensate Overflow Switch:..... 5 lb  
**Direct Drive - EcoBlue - High Static:**..... 5 lb  
 SystemVu Controls:..... 2 lb  
 Enthalpy Ultra Low Leak Econo w/Baro Relief:..... 37 lb  
 Hinged Panels and Unpowered Convenience Outlet:..... 9 lb  
 Non-Fused Disconnect and Thru-The-Base Connections:..... 9 lb

#### Accessories

14-inch Tall Roof Curb:..... 115 lb  
 Total Operating Weight:..... 778 lb

#### Unit

Unit Voltage-Phase-Hertz:..... **460-3-60**  
 Air Discharge:..... **Vertical**  
 Fan Drive Type:..... **Vane Axial**  
**Actual Airflow:**..... **1750** CFM  
 Site Altitude:..... 0 ft

#### Cooling Performance

Condenser Entering Air DB:..... **95.0** F  
 Evaporator Entering Air DB:..... **76.9** F  
 Evaporator Entering Air WB:..... **66.2** F  
 Entering Air Enthalpy:..... 30.83 BTU/lb  
 Evaporator Leaving Air DB:..... 56.1 F  
 Evaporator Leaving Air WB:..... 55.3 F  
 Evaporator Leaving Air Enthalpy:..... 23.37 BTU/lb  
 Gross Cooling Capacity:..... 58.78 MBH  
 Gross Sensible Capacity:..... 39.29 MBH  
 Compressor Power Input:..... 4.16 kW  
 Coil Bypass Factor:..... 0.014

#### Heating Performance

Outdoor Ambient Temperature:..... 47.0 F  
 Entering Air Indoor Coil DB:..... 70.0 F  
 Leaving Air Indoor Coil DB:..... 98.9 F  
 Total Heating Capacity:..... 54.60 MBH  
 Integrated Heating Capacity:..... 54.60 MBH  
 Heating Power Input:..... 3.63 kW  
 High Temperature COP:..... 3.80  
 Low Temperature COP:..... 2.70  
 HSPF:..... 8.9

#### Supply Fan

External Static Pressure:..... **0.80** in wg  
 Options / Accessories Static Pressure  
 Economizer:..... 0.09 in wg  
 Application External Static (ESP + Unit Opts/Acc.):..... 0.89 in wg  
 Fan RPM:..... 1863  
 Fan Power:..... 0.69 BHP

NOTE:..... **Selected IFM RPM Range: 1228 - 2836**

## Performance Summary For RTU - 5

Project: BCF - Cape Coral, FL #1450(2301 Del Prado Blvd S)  
 Prepared By:

04/24/2023  
 03:45PM

**Selection includes construction throwaway filter into the base fan curve. This filter is not MERV Rated.**

**Electrical Data**

Voltage Range:.....	<b>414 - 506</b>
Compressor #1 RLA:.....	<b>11</b>
Compressor #1 LRA:.....	<b>52</b>
Indoor Fan Motor Type:.....	<b>HIGH</b>
<b>Indoor Fan Motor FLA (Total):.....</b>	<b>2.9</b>
Power Supply MCA:.....	<b>18</b>
Power Supply MOCP (Fuse or HACR):.....	<b>25</b>
Disconnect Size FLA:.....	<b>17</b>
Disconnect Size LRA:.....	<b>58</b>
Electrical Convenience Outlet:.....	<b>None</b>
Outdoor Fan [Qty / FLA (ea)]:.....	<b>1 / 0.8</b>

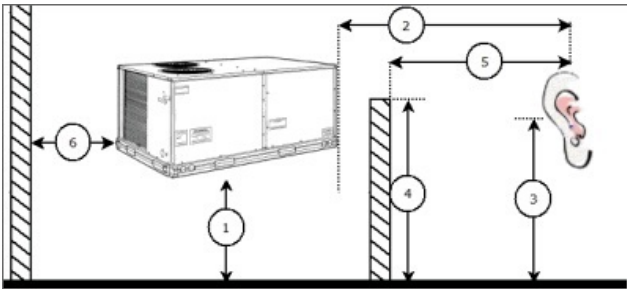
**Control Panel SCCR: 5kA RMS at Rated Symmetrical Voltage**

**Acoustics**

Sound Power Levels, db re 10E-12 Watts

	<b>Discharge</b>	<b>Inlet</b>	<b>Outdoor</b>
63 Hz	90.9	88.3	85.6
125 Hz	81.6	77.1	84.7
250 Hz	75.5	70.8	80.5
500 Hz	71.5	63.3	76.0
1000 Hz	67.8	65.9	72.4
2000 Hz	65.0	57.0	68.0
4000 Hz	62.0	50.6	62.8
8000 Hz	58.8	44.8	59.3
A-Weighted	74.9	70.1	79.0

**Advanced Acoustics**



**Advanced Acoustics Parameters**

1. Unit height above ground:.....	<b>30.0</b> ft
2. Horizontal distance from unit to receiver:.....	<b>50.0</b> ft
3. Receiver height above ground:.....	<b>5.7</b> ft
4. Height of obstruction:.....	<b>0.0</b> ft
5. Horizontal distance from obstruction to receiver:.....	<b>0.0</b> ft
6. Horizontal distance from unit to obstruction:.....	<b>0.0</b> ft

**Detailed Acoustics Information**

## Performance Summary For RTU - 5

Project: BCF - Cape Coral, FL #1450(2301 Del Prado Blvd S)  
 Prepared By:

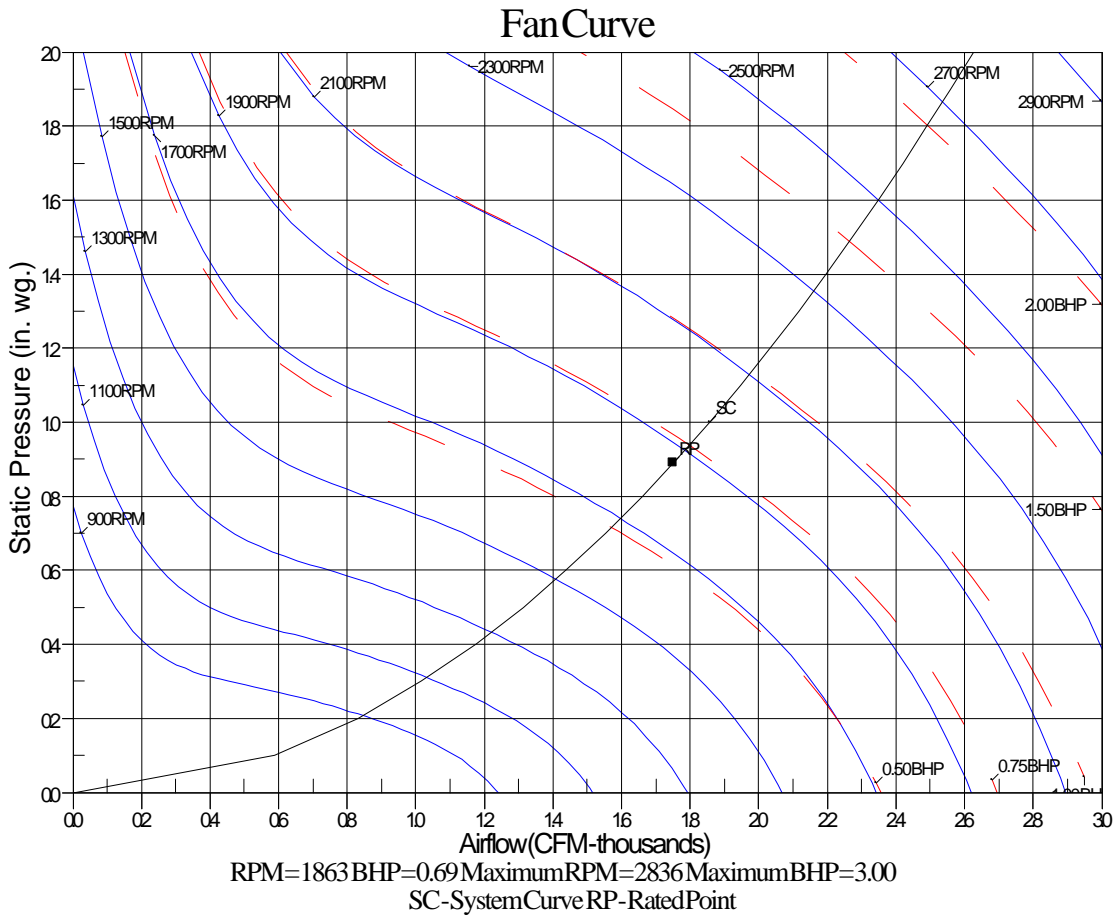
04/24/2023  
 03:45PM

Octave Band Center Freq. Hz	63	125	250	500	1k	2k	4k	8k	Overall
A	85.6	84.7	80.5	76.0	72.4	68.0	62.8	59.3	89.2 Lw
B	59.4	68.6	71.9	72.8	72.4	69.2	63.8	58.2	78.5 LwA
C	53.2	52.3	48.1	43.6	40.0	35.6	30.4	26.9	56.8 Lp
D	27.0	36.2	39.5	40.4	40.0	36.8	31.4	25.8	46.1 LpA

**Legend**

- A Sound Power Levels at Unit's Acoustic Center, Lw
- B A-Weighted Sound Power Levels at Unit's Acoustic Center, LwA
- C Sound Pressure Levels at Specific Distance from Unit, Lp
- D A-Weighted Sound Pressure Levels at Specific Distance from Unit, LpA

Calculation methods used in this program are patterned after the ASHRAE Guide; other ASHRAE Publications and the AHRI Acoustical Standards. While a very significant effort has been made to insure the technical accuracy of this program, it is assumed that the user is knowledgeable in the art of system sound estimation and is aware of the tolerances involved in real world acoustical estimation. This program makes certain assumptions as to the dominant sound sources and sound paths which may not always be appropriate to the real system being estimated. Because of this, no assurances can be offered that this software will always generate an accurate sound prediction from user supplied input data. If in doubt about the estimation of expected sound levels in a space, an Acoustical Engineer or a person with sound prediction expertise should be consulted.



**RTU - 6**

Project: BCF - Cape Coral, FL #1450(2301 Del Prado Blvd S)(  
Prepared By:

04/24/2023  
03:45PM

**RTU - 6**

**Tag Cover Sheet  
Unit Report  
Certified Drawing  
Performance Report**

## Unit Report For RTU - 6

Project: BCF - Cape Coral, FL #1450(2301 Del Prado Blvd S)  
 Prepared By:

04/24/2023  
 03:45PM

### Unit Parameters

Unit Model:.....**50GCQM04J3B6-3W4F0**  
 Unit Size:.....**04 (3 Tons)**  
 Volts-Phase-Hertz:.....**460-3-60**  
 Heating Type:.....**Heat Pump**  
 Heat Control:.....**Two Stage Cooling Models**  
 Duct Cfg:.....**Vertical Supply / Vertical Return**

### Dimensions (ft. in.) & Weight (lb.) \*\*\*

Unit Length:.....**6' 2.375"**  
 Unit Width:.....**3' 10.625"**  
 Unit Height:.....**2' 9.375"**  
**Total Operating Weight:.....655 lb**

\*\*\* Weights and Dimensions are approximate. Weight does not include unit packaging. Approximate dimensions are provided primarily for shipping purposes. For exact dimensions and weights, refer to appropriate product data catalog.

### Lines and Filters

Return Air Filter Type:.....**Throwaway**  
 Return Air Filter Quantity:.....**2**  
 Return Air Filter Size:.....**16 x 25 x 2**

**Selection includes construction throwaway filter into the base fan curve.**

### Unit Configuration

Condensate Overflow Switch  
**Direct Drive - EcoBlue - High Static**  
 Precoat Al/Cu - Al/Cu  
 SystemVu Controls  
 Enthalpy Ultra Low Leak Econo w/Baro Relief  
 Hinged Panels and Unpowered Convenience Outlet  
 Non-Fused Disconnect and Thru-The-Base Connections  
 Standard Packaging

### Warranty Information

5-Year compressor parts (STD.)  
 1-Year parts (STD.)  
 Start-up, Each Additional Unit

**NOTE: Please see Warranty Catalog 500-089 for explanation of policies and ordering methods.**

### Ordering Information

Part Number	Description	Quantity
50GCQM04J3B6-3W4F0	Rooftop Unit	1
	Base Unit	
	Condensate Overflow Switch	
	Direct Drive - EcoBlue - High Static	
	Precoat Al/Cu - Al/Cu	
	Hinged Panels and Unpowered Convenience Outlet	
	Non-Fused Disconnect and Thru-The-Base Connections	
	SystemVu controller, Ultra LOW LEAK EconoMi\$er2 enthalpy economizer with barometric relief. SystemV	
<b>Field Installed Accessories</b>		
33CENTSEN	Enthalpy Transmitter	1
33ZCT55SPT	Space Temp. with Override	1
CRRFCURB001A01	14-inch Tall Roof Curb	1

# Certified Drawing for RTU - 6

Project: BCF - Cape Coral, FL #1450(2301 Del Prado Blvd S)  
Prepared By:

04/24/2023  
03:45PM

- NOTES:
1. DIMENSIONS ARE IN INCHES. DIMENSIONS IN ( ) ARE IN MILLIMETERS.
  2. CENTER OF GRAVITY
  3. DIRECTION OF AIR FLOW
  4. ALL VIEW DRAWN USING 3RD ANGLE

UNIT	J	K
50GCO+04	33 3/8 [847]	18 5/8 [472]
50GCO+05	41 3/8 [1051]	18 5/8 [472]
50GCO+06	41 3/8 [1051]	18 5/8 [472]

**Carrier** UNITED TECHNOLOGIES  
THIS DOCUMENT IS THE PROPERTY OF UTC CLIMATE, CONTROLS & SECURITY AND IS DELIVERED UPON THE EXPRESS CONDITION THAT THE CONTENTS WILL NOT BE DISCLOSED OR USED WITHOUT WRITTEN CONSENT.

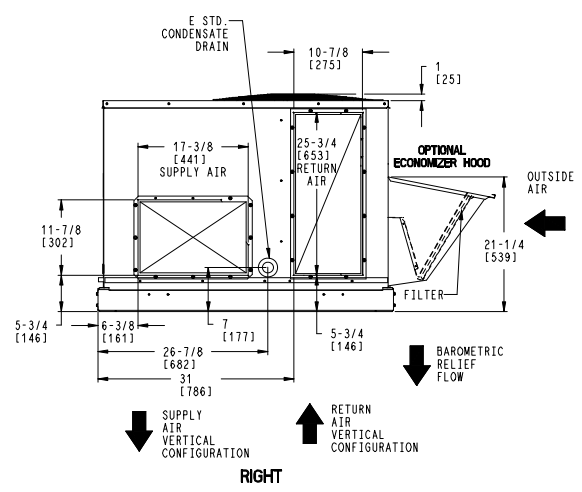
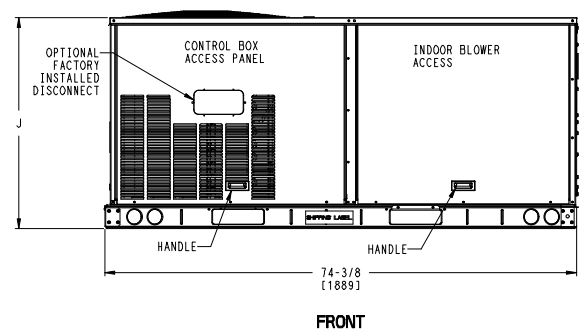
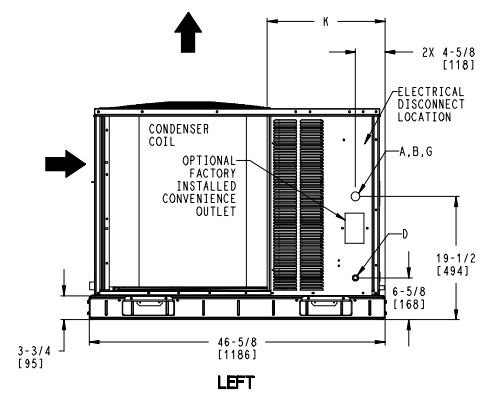
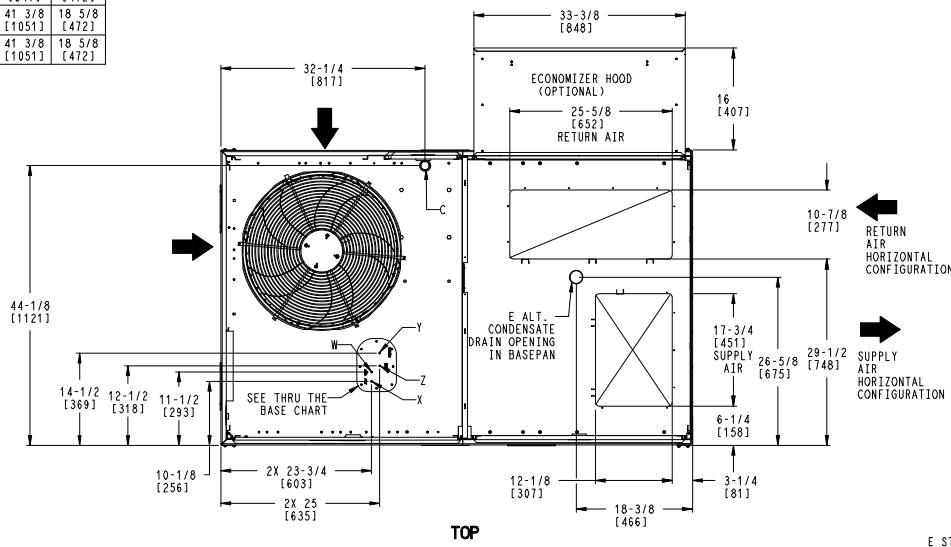
CONNECTION SIZES	
A	1 3/8" [35] DIA FIELD POWER SUPPLY HOLE
B	2" [51] DIA POWER SUPPLY KNOCKOUT
C	1 3/4" [44] DIA GAUGE ACCESS PLUG
D	7/8" [22] DIA FIELD CONTROL WIRING HOLE
E	3/4"-14 NPT CONDENSATE DRAIN
G	2 1/2" [64] DIA POWER SUPPLY KNOCK-OUT

THRU-THE-BASE CHART THESE HOLES REQUIRED FOR USE CRBTMPW008A00, 009A00			
	THREADED CONDUIT SIZE	WIRE USE	REQ'D HOLE SIZES (MAX.)
W	1/2"	115V	7/8" [22.2]
X	1/2"	24V	7/8" [22.2]
Y *	3/4"	POWER	1 1/8" [28.6]
Z **	(009A00) 1/2" FPT	GAS	1 1/8" [28.6]

FOR "THRU-THE-BASEPAN" FACTORY OPTION, FITTINGS FOR ONLY X, Y, & Z ARE PROVIDED

\* SELECT EITHER 3/4" OR 1/2" FOR POWER, DEPENDING ON WIRE SIZE

\*\* (008A00) PROVIDES 3/4" FPT THRU CURB FLANGE & FITTING.



ITC CLASSIFICATION	SHEET	DATE	SUPERCEDES	50GCO 04-06 SINGLE PACKAGE HEAT PUMP	48TC003351	REV
U.S. ECCN:NSR	1 OF 3	08/15/19	-			-

# Certified Drawing for RTU - 6

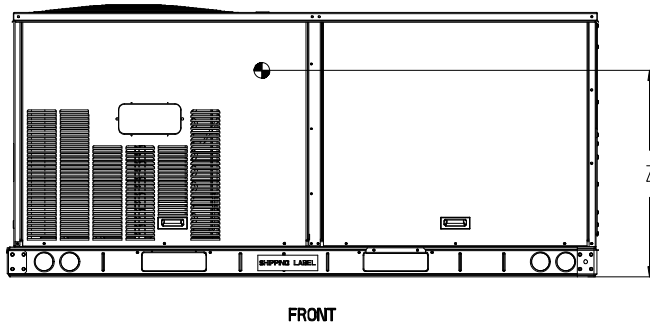
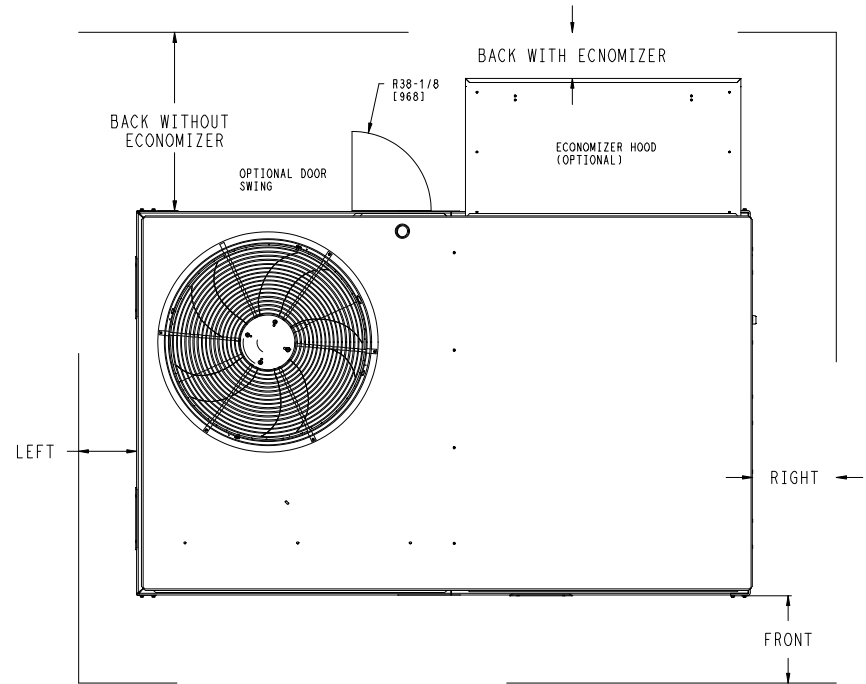
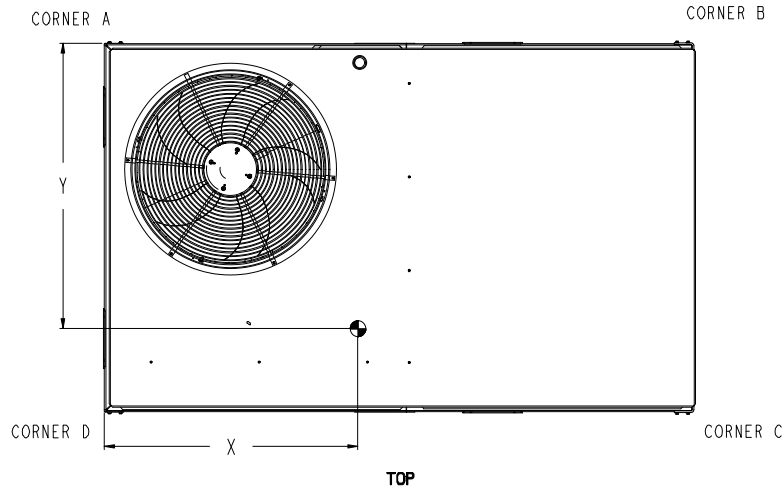
Project: BCF - Cape Coral, FL #1450(2301 Del Prado Blvd S)  
Prepared By:

04/24/2023  
03:45PM

UNIT	STD. UNIT WEIGHT *		CORNER WEIGHT (A)		CORNER WEIGHT (B)		CORNER WEIGHT (C)		CORNER WEIGHT (D)		C.G.		HEIGHT
	LBS.	KG.	LBS.	KG.	LBS.	KG.	LBS.	KG.	LBS.	KG.	X	Y	Z
50GCO*04	475	215	128	58	120	54	110	50	117	53	36 [914]	22 3/8 [568]	16 1/8 [410]
50GCO*05	590	268	162	73	147	67	134	61	148	67	35 3/8 [898]	22 5/16 [557]	16 1/2 [419]
50GCO*06	596	270	163	74	148	67	125	61	149	68	35 3/8 [898]	22 5/16 [557]	16 1/2 [419]

\* - STANDARD UNIT WEIGHT IS WITHOUT ELECTRIC HEAT AND WITHOUT PACKAGING.  
FOR OTHER OPTIONS AND ACCESSORIES REFER TO THE PRODUCT DATA CATALOG.

**Carrier** THIS DOCUMENT IS THE PROPERTY OF UTC CLIMATE, CONTROLS & SECURITY AND IS DELIVERED UPON THE EXPRESS CONDITION THAT THIS CONTENTS WILL NOT BE DISCLOSED OR USED WITHOUT WRITTEN CONSENT. SUBMISSION OF THESE DRAWINGS OR DOCUMENTS DOES NOT CONSTITUTE PART PERFORMANCE OR ACCEPTANCE OF CONTRACT.



NOTE:  
1. FOR ALL MINIMUM CLEARANCES LOCAL CODES OR JURISDICTIONS MAY PREVAIL.

SURFACE	CLEARANCE		OPERATING CLEARANCE
	SERVICE WITH CONDUCTIVE BARRIER	SERVICE WITH NONCONDUCTIVE BARRIER	
FRONT	48 [1219mm]	36 [914mm]	18 [457mm]
LEFT	48 [1219mm]	42 [1067mm]	18 [457mm]
BACK W/O ECON	48 [1219mm]	42 [1067mm]	18 [457mm]
BACK W/ECON	36 [914mm]	36 [914mm]	18 [457mm]
RIGHT	36 [914mm]	36 [914mm]	18 [457mm]
TOP	72 [1829mm]	72 [1829mm]	72 [1829mm]

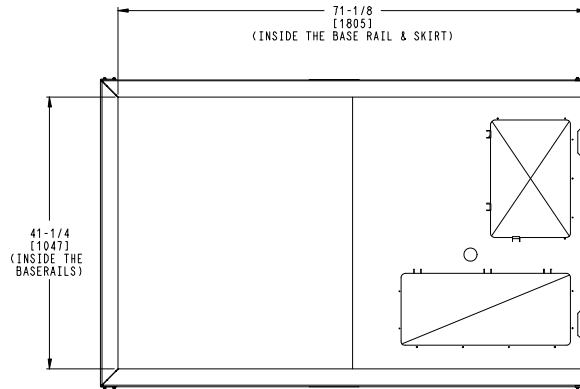
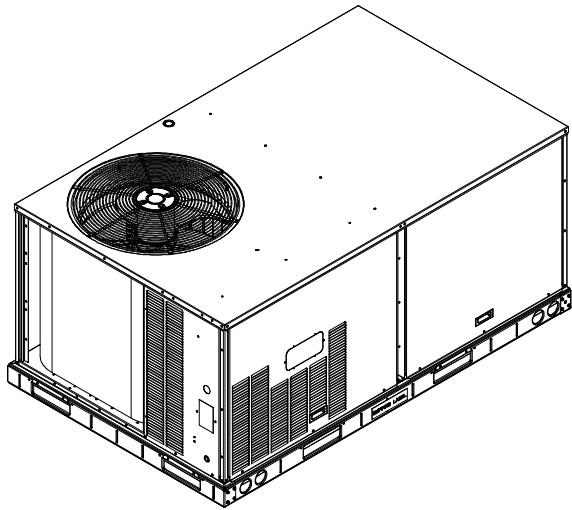
ITC CLASSIFICATION U.S. ECCN:NSR	SHEET 2 OF 3	DATE 08/15/19	SUPERCEDES -	50GCO 04-06 SINGLE PACKAGE HEAT PUMP	48TC003351	REV -
-------------------------------------	-----------------	------------------	-----------------	--------------------------------------	------------	----------

# Certified Drawing for RTU - 6

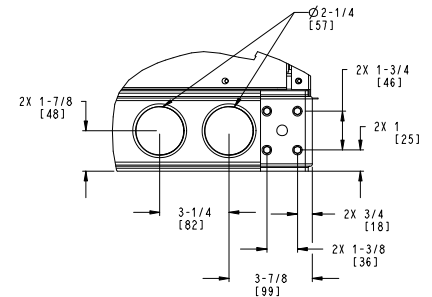
Project: BCF - Cape Coral, FL #1450(2301 Del Prado Blvd S)  
 Prepared By:

04/24/2023  
 03:45PM

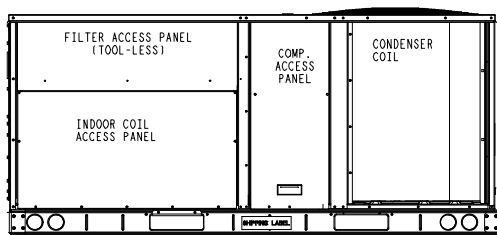
THIS DOCUMENT IS THE PROPERTY OF UTC CLIMATE, CONTROLS & SECURITY AND IS DELIVERED UPON THE EXPRESS CONDITION THAT THE CONTENTS WILL NOT BE DISCLOSED OR USED WITHOUT WRITTEN CONSENT.
 SUBMISSION OF THESE DRAWINGS OR DOCUMENTS DOES NOT CONSTITUTE PART PERFORMANCE OR ACCEPTANCE OF CONTRACT.



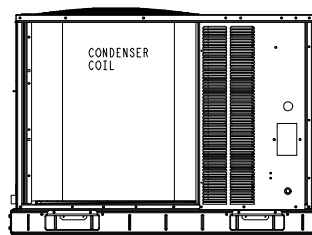
INSIDE BASERAIL DIMENSIONS  
**BOTTOM**



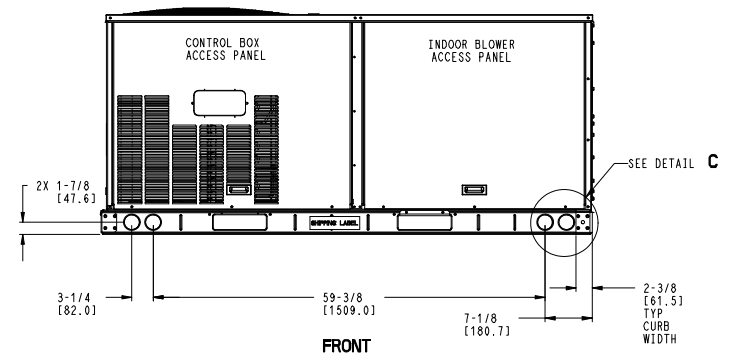
DETAIL **C**  
 TYP 4 PLCS



**BACK**



**LEFT**



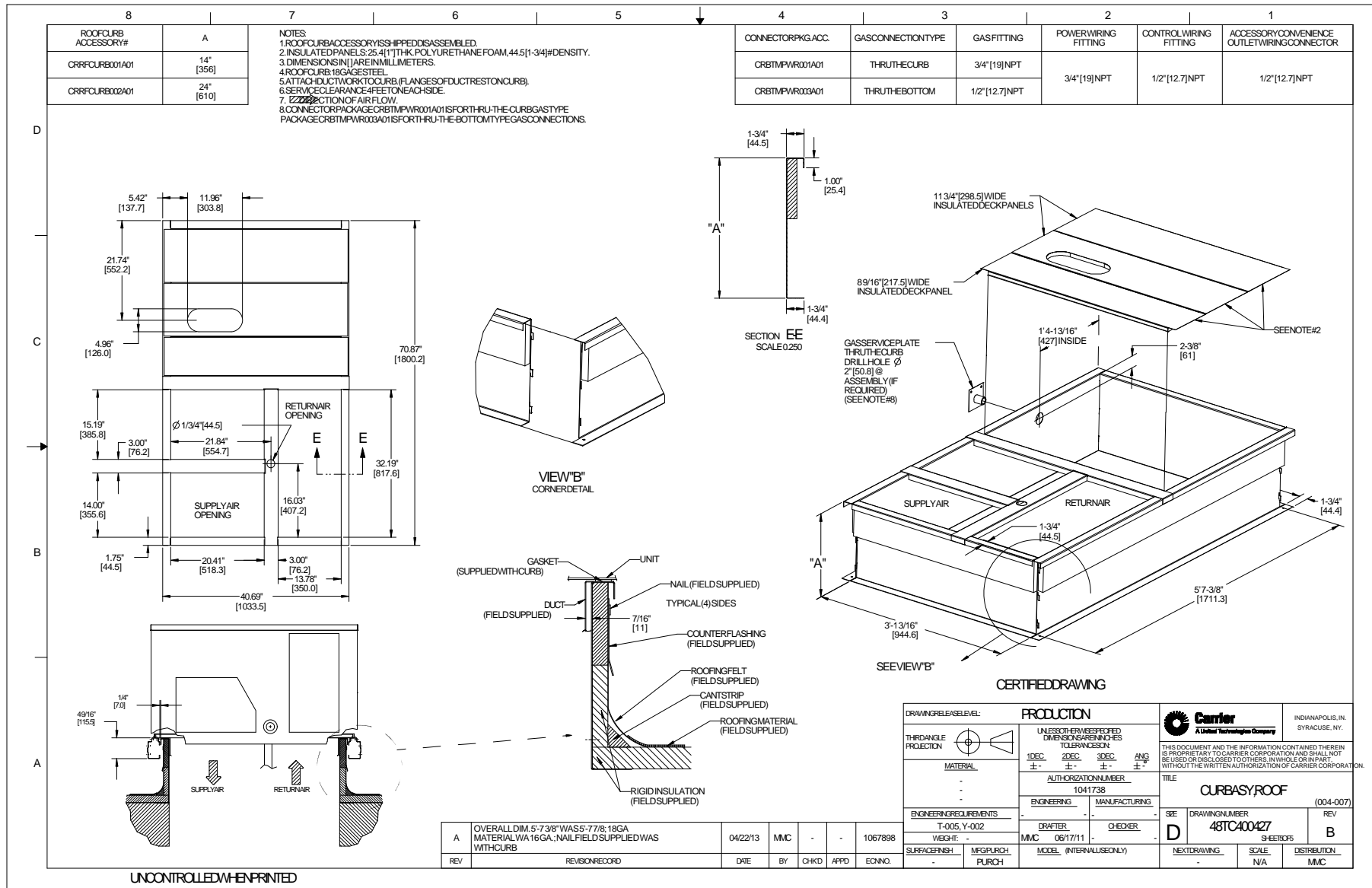
**FRONT**

ITC CLASSIFICATION	SHEET	DATE	SUPERCEDES	50GCQ 04-06 SINGLE PACKAGE HEAT PUMP	48TC003351	REV
U.S. ECCN: NSR	3 OF 3	08/15/19	-			-

# Certified Drawing for RTU - 6

Project: BCF - Cape Coral, FL #1450(2301 Del Prado Blvd S)  
 Prepared By:

04/24/2023  
 03:45PM



## Performance Summary For RTU - 6

Project: BCF - Cape Coral, FL #1450(2301 Del Prado Blvd S)  
 Prepared By:

04/24/2023  
 03:45PM

### Part Number: 50GCQM04J3B6-3W4F0

ARI SEER: ..... **16.20**

#### Base Unit Dimensions

Unit Length: ..... 74.4 in  
 Unit Width: ..... 46.6 in  
 Unit Height: ..... 33.4 in

#### Operating Weight

Base Unit Weight: ..... **475** lb  
 Condensate Overflow Switch: ..... 5 lb  
Direct Drive - EcoBlue - High Static:..... 3 lb  
 SystemVu Controls: ..... 2 lb  
 Enthalpy Ultra Low Leak Econo w/Baro Relief: ..... 37 lb  
 Hinged Panels and Unpowered Convenience Outlet: ..... 9 lb  
 Non-Fused Disconnect and Thru-The-Base Connections: ..... 9 lb

#### Accessories

14-inch Tall Roof Curb: ..... 115 lb  
 Total Operating Weight: ..... 655 lb

#### Unit

Unit Voltage-Phase-Hertz: ..... 460-3-60  
 Air Discharge: ..... Vertical  
 Fan Drive Type: ..... Vane Axial  
Actual Airflow: ..... **900** CFM  
 Site Altitude: ..... 0 ft

#### Cooling Performance

Condenser Entering Air DB: ..... **95.0** F  
 Evaporator Entering Air DB: ..... **75.4** F  
 Evaporator Entering Air WB: ..... **66.1** F  
 Entering Air Enthalpy: ..... 30.76 BTU/lb  
 Evaporator Leaving Air DB: ..... 54.3 F  
 Evaporator Leaving Air WB: ..... 53.7 F  
 Evaporator Leaving Air Enthalpy: ..... 22.36 BTU/lb  
 Gross Cooling Capacity: ..... 34.04 MBH  
 Gross Sensible Capacity: ..... 20.52 MBH  
 Compressor Power Input: ..... 2.35 kW  
 Coil Bypass Factor: ..... 0.053

#### Heating Performance

Outdoor Ambient Temperature: ..... 47.0 F  
 Entering Air Indoor Coil DB: ..... 70.0 F  
 Leaving Air Indoor Coil DB: ..... 103.3 F  
 Total Heating Capacity: ..... 32.40 MBH  
 Integrated Heating Capacity: ..... 32.40 MBH  
 Heating Power Input: ..... 2.51 kW  
 High Temperature COP: ..... 3.80  
 Low Temperature COP: ..... 2.40  
 HSPF: ..... 8.8

#### Supply Fan

External Static Pressure: ..... **0.80** in wg  
 Options / Accessories Static Pressure  
 Economizer: ..... 0.02 in wg  
Application External Static (ESP + Unit Opts/Acc.): ..... 0.82 in wg  
 Fan RPM: ..... 1689  
 Fan Power: ..... 0.35 BHP

NOTE: ..... Selected IFM RPM Range: 1058 - 2490

## Performance Summary For RTU - 6

Project: BCF - Cape Coral, FL #1450(2301 Del Prado Blvd S)  
 Prepared By:

04/24/2023  
 03:45PM

**Selection includes construction throwaway filter into the base fan curve. This filter is not MERV Rated.**

**Electrical Data**

Voltage Range:.....	414 - 506
Compressor #1 RLA:.....	5.8
Compressor #1 LRA:.....	38
Indoor Fan Motor Type:.....	HIGH
Indoor Fan Motor FLA (Total):.....	1.5
Power Supply MCA:.....	10
Power Supply MOCP (Fuse or HACR):.....	15
Disconnect Size FLA:.....	9
Disconnect Size LRA:.....	42
Electrical Convenience Outlet:.....	None
Outdoor Fan [Qty / FLA (ea)]:.....	1 / 0.8

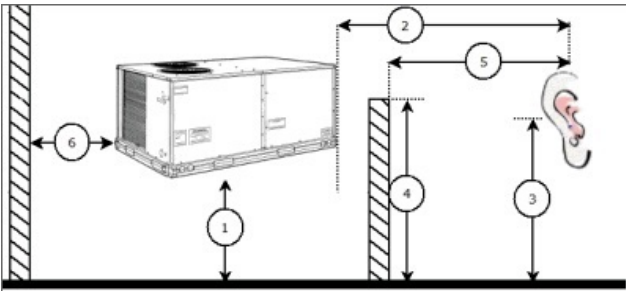
**Control Panel SCCR: 5kA RMS at Rated Symmetrical Voltage**

**Acoustics**

Sound Power Levels, db re 10E-12 Watts

	Discharge	Inlet	Outdoor
63 Hz	91.9	84.2	81.8
125 Hz	82.7	77.0	81.8
250 Hz	73.5	68.3	77.0
500 Hz	66.3	60.0	72.6
1000 Hz	63.5	61.3	69.9
2000 Hz	60.3	52.8	64.6
4000 Hz	57.1	46.9	59.3
8000 Hz	56.6	41.7	55.6
A-Weighted	72.6	67.0	75.4

**Advanced Acoustics**



**Advanced Acoustics Parameters**

1. Unit height above ground:.....	30.0 ft
2. Horizontal distance from unit to receiver:.....	50.0 ft
3. Receiver height above ground:.....	5.7 ft
4. Height of obstruction:.....	0.0 ft
5. Horizontal distance from obstruction to receiver:.....	0.0 ft
6. Horizontal distance from unit to obstruction:.....	0.0 ft

**Detailed Acoustics Information**

## Performance Summary For RTU - 6

Project: BCF - Cape Coral, FL #1450(2301 Del Prado Blvd S)  
 Prepared By:

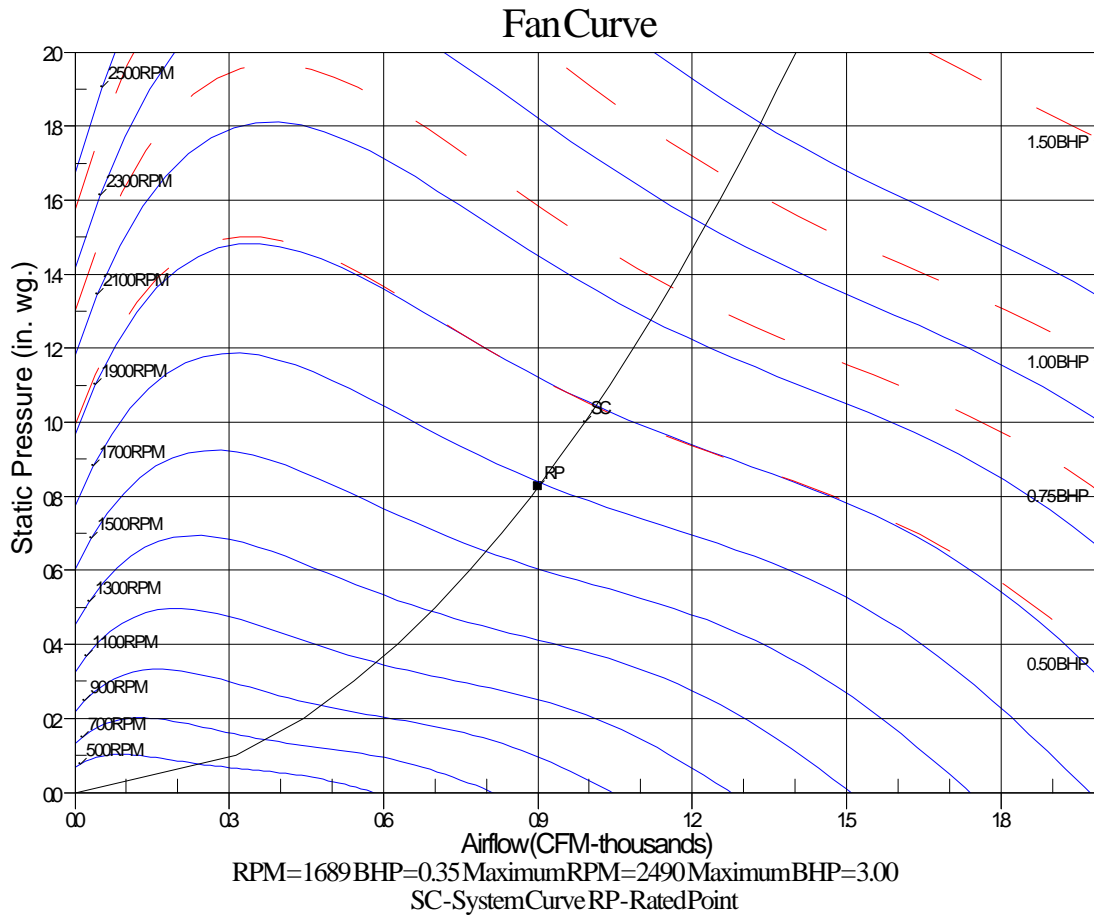
04/24/2023  
 03:45PM

Octave Band Center Freq. Hz	63	125	250	500	1k	2k	4k	8k	Overall
A	81.8	81.8	77.0	72.6	69.9	64.6	59.3	55.6	85.9 Lw
B	55.6	65.7	68.4	69.4	69.9	65.8	60.3	54.5	75.4 LwA
C	49.4	49.4	44.6	40.2	37.5	32.2	26.9	23.2	53.5 Lp
D	23.2	33.3	36.0	37.0	37.5	33.4	27.9	22.1	43.0 LpA

**Legend**

- A Sound Power Levels at Unit's Acoustic Center, Lw
- B A-Weighted Sound Power Levels at Unit's Acoustic Center, LwA
- C Sound Pressure Levels at Specific Distance from Unit, Lp
- D A-Weighted Sound Pressure Levels at Specific Distance from Unit, LpA

Calculation methods used in this program are patterned after the ASHRAE Guide; other ASHRAE Publications and the AHRI Acoustical Standards. While a very significant effort has been made to insure the technical accuracy of this program, it is assumed that the user is knowledgeable in the art of system sound estimation and is aware of the tolerances involved in real world acoustical estimation. This program makes certain assumptions as to the dominant sound sources and sound paths which may not always be appropriate to the real system being estimated. Because of this, no assurances can be offered that this software will always generate an accurate sound prediction from user supplied input data. If in doubt about the estimation of expected sound levels in a space, an Acoustical Engineer or a person with sound prediction expertise should be consulted.



**RTU - 7**

Project: BCF - Cape Coral, FL #1450(2301 Del Prado Blvd S)(  
Prepared By:

04/24/2023  
03:45PM

**RTU - 7**

**Tag Cover Sheet  
Unit Report  
Certified Drawing  
Performance Report**

## Unit Report For RTU - 7

Project: BCF - Cape Coral, FL #1450(2301 Del Prado Blvd S)  
 Prepared By:

04/24/2023  
 03:45PM

### Unit Parameters

Unit Model:.....**50GCQM04J3B6-3W4F0**  
 Unit Size:.....**04 (3 Tons)**  
 Volts-Phase-Hertz:.....**460-3-60**  
 Heating Type:.....**Heat Pump**  
 Heat Control:.....**Two Stage Cooling Models**  
 Duct Cfg:.....**Vertical Supply / Vertical Return**

### Dimensions (ft. in.) & Weight (lb.) \*\*\*

Unit Length:.....**6' 2.375"**  
 Unit Width:.....**3' 10.625"**  
 Unit Height:.....**2' 9.375"**  
**Total Operating Weight:.....655 lb**

\*\*\* Weights and Dimensions are approximate. Weight does not include unit packaging. Approximate dimensions are provided primarily for shipping purposes. For exact dimensions and weights, refer to appropriate product data catalog.

### Lines and Filters

Return Air Filter Type:.....**Throwaway**  
 Return Air Filter Quantity:.....**2**  
 Return Air Filter Size:.....**16 x 25 x 2**

**Selection includes construction throwaway filter into the base fan curve.**

### Unit Configuration

Condensate Overflow Switch  
**Direct Drive - EcoBlue - High Static**  
 Precoat Al/Cu - Al/Cu  
 SystemVu Controls  
 Enthalpy Ultra Low Leak Econo w/Baro Relief  
 Hinged Panels and Unpowered Convenience Outlet  
 Non-Fused Disconnect and Thru-The-Base Connections  
 Standard Packaging

### Warranty Information

5-Year compressor parts (STD.)  
 1-Year parts (STD.)  
 Start-up, Each Additional Unit

**NOTE: Please see Warranty Catalog 500-089 for explanation of policies and ordering methods.**

### Ordering Information

Part Number	Description	Quantity
50GCQM04J3B6-3W4F0	Rooftop Unit	1
	Base Unit	
	Condensate Overflow Switch	
	Direct Drive - EcoBlue - High Static	
	Precoat Al/Cu - Al/Cu	
	Hinged Panels and Unpowered Convenience Outlet	
	Non-Fused Disconnect and Thru-The-Base Connections	
	SystemVu controller, Ultra LOW LEAK EconoMi\$er2 enthalpy economizer with barometric relief. SystemV	
<b>Field Installed Accessories</b>		
33CENTSEN	Enthalpy Transmitter	1
33ZCT55SPT	Space Temp. with Override	1
CRRFCURB001A01	14-inch Tall Roof Curb	1

# Certified Drawing for RTU - 7

Project: BCF - Cape Coral, FL #1450(2301 Del Prado Blvd S)  
Prepared By:

04/24/2023  
03:45PM

- NOTES:
1. DIMENSIONS ARE IN INCHES. DIMENSIONS IN ( ) ARE IN MILLIMETERS.
  2. CENTER OF GRAVITY
  3. DIRECTION OF AIR FLOW
  4. ALL VIEW DRAWN USING 3RD ANGLE

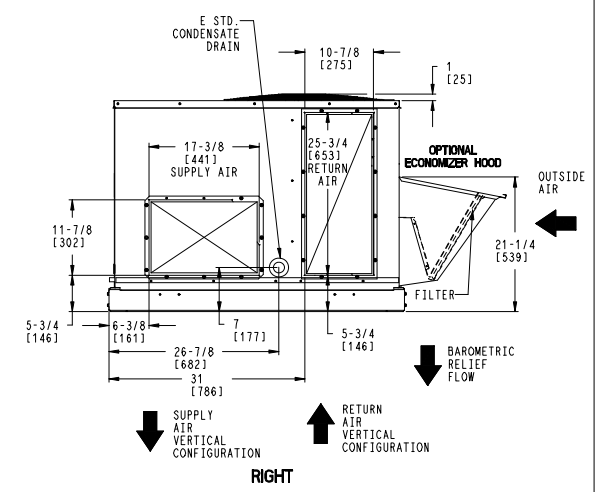
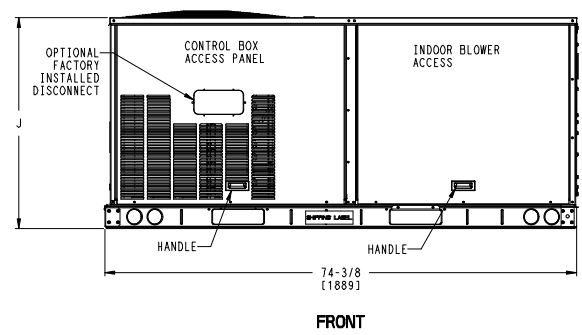
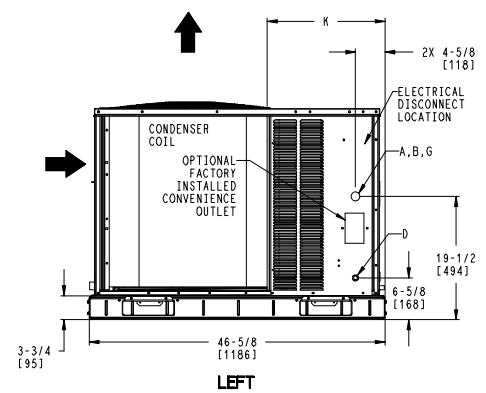
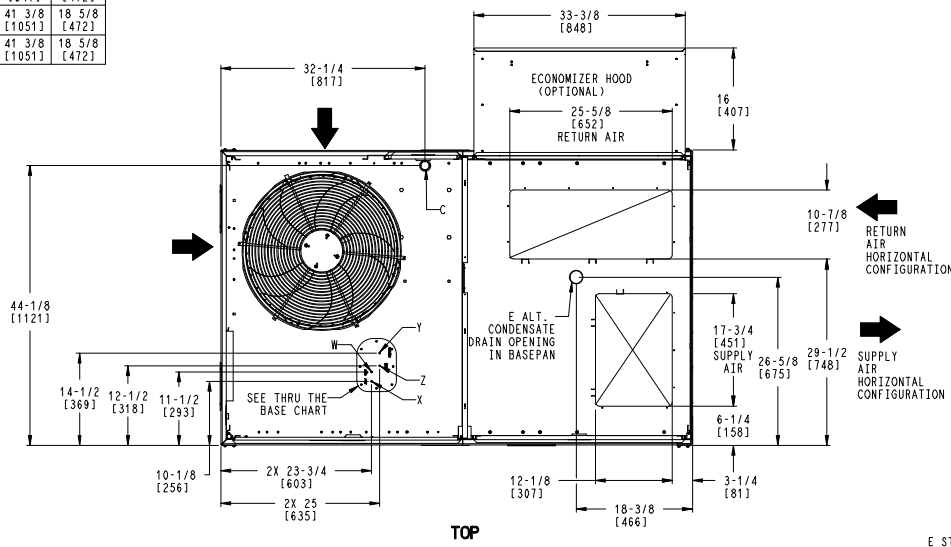
UNIT	J	K
50GCO+04	33 3/8 [847]	18 5/8 [472]
50GCO+05	41 3/8 [1051]	18 5/8 [472]
50GCO+06	41 3/8 [1051]	18 5/8 [472]

THIS DOCUMENT IS THE PROPERTY OF UTC CLIMATE, CONTROLS & SECURITY AND IS DELIVERED UPON THE EXPRESS CONDITION THAT THE CONTENTS WILL NOT BE DISCLOSED OR USED WITHOUT WRITTEN CONSENT.

CONNECTION SIZES	
A	1 3/8" [35] DIA FIELD POWER SUPPLY HOLE
B	2" [51] DIA POWER SUPPLY KNOCKOUT
C	1 3/4" [44] DIA GAUGE ACCESS PLUG
D	7/8" [22] DIA FIELD CONTROL WIRING HOLE
E	3/4"-14 NPT CONDENSATE DRAIN
G	2 1/2" [64] DIA POWER SUPPLY KNOCK-OUT

THRU-THE-BASE CHART THESE HOLES REQUIRED FOR USE CRBTMPW008A00, 009A00			
	THREADED CONDUIT SIZE	WIRE USE	REQ'D HOLE SIZES (MAX.)
W	1/2"	115V	7/8" [22.2]
X	1/2"	24V	7/8" [22.2]
Y *	3/4"	POWER	1 1/8" [28.6]
Z **	(009A00) 1/2" FPT	GAS	1 1/8" [28.6]

FOR "THRU-THE-BASEPAN" FACTORY OPTION, FITTINGS FOR ONLY X, Y, & Z ARE PROVIDED.  
 \* SELECT EITHER 3/4" OR 1/2" FOR POWER, DEPENDING ON WIRE SIZE  
 \*\* (008A00) PROVIDES 3/4" FPT THRU CURB FLANGE & FITTING.



ITC CLASSIFICATION	SHEET	DATE	SUPERCEDES	DESCRIPTION	PROJECT	REV
U.S. ECCN:NSR	1 OF 3	08/15/19	-	50GCO 04-06 SINGLE PACKAGE HEAT PUMP	48TC003351	-

# Certified Drawing for RTU - 7

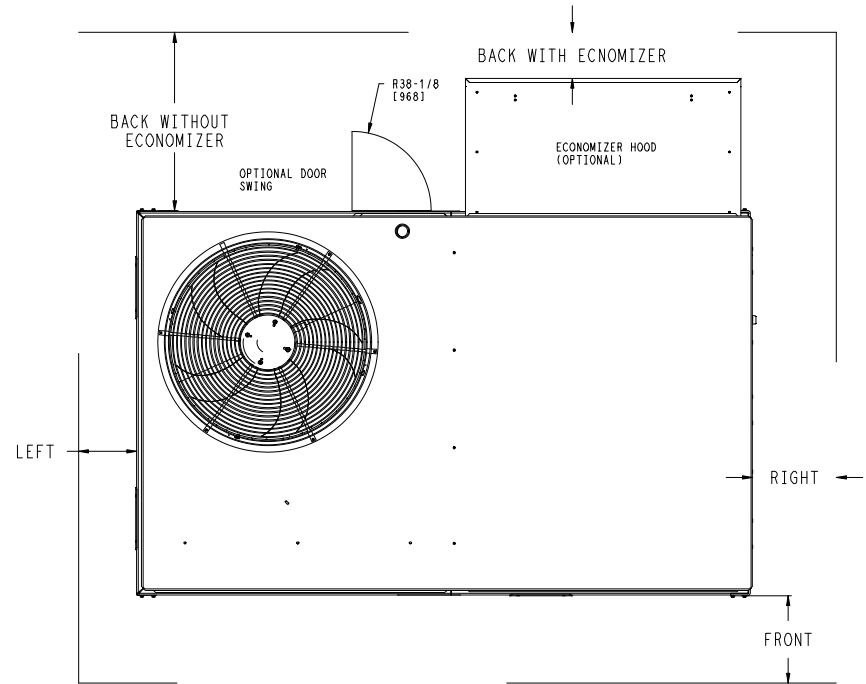
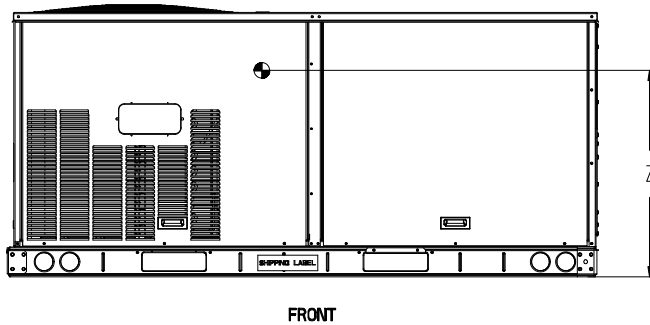
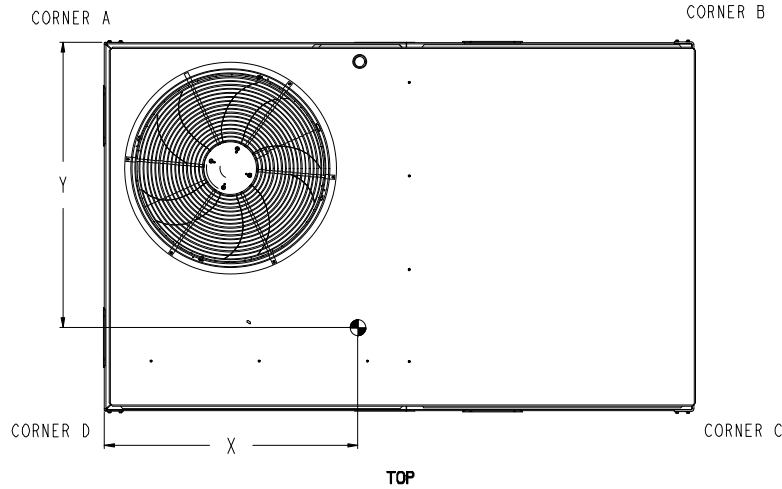
Project: BCF - Cape Coral, FL #1450(2301 Del Prado Blvd S)  
 Prepared By:

04/24/2023  
 03:45PM

UNIT	STD. UNIT WEIGHT *		CORNER WEIGHT (A)		CORNER WEIGHT (B)		CORNER WEIGHT (C)		CORNER WEIGHT (D)		C.G.		HEIGHT Z
	LBS.	KG.	LBS.	KG.	LBS.	KG.	LBS.	KG.	LBS.	KG.	X	Y	
50GCO*04	475	215	128	58	120	54	110	50	117	53	36 [914]	22 3/8 [568]	16 1/8 [410]
50GCO*05	590	268	162	73	147	67	134	61	148	67	35 3/8 [898]	22 5/16 [557]	16 1/2 [419]
50GCO*06	596	270	163	74	148	67	125	61	149	68	35 3/8 [898]	22 5/16 [557]	16 1/2 [419]

\* - STANDARD UNIT WEIGHT IS WITHOUT ELECTRIC HEAT AND WITHOUT PACKAGING.  
 FOR OTHER OPTIONS AND ACCESSORIES REFER TO THE PRODUCT DATA CATALOG.

**Carrier** THIS DOCUMENT IS THE PROPERTY OF UTC CLIMATE, CONTROLS & SECURITY AND IS DELIVERED UPON THE EXPRESS CONDITION THAT THE CONTENTS WILL NOT BE DISCLOSED OR USED WITHOUT WRITTEN CONSENT. SUBMISSION OF THESE DRAWINGS OR DOCUMENTS DOES NOT CONSTITUTE PART PERFORMANCE OR ACCEPTANCE OF CONTRACT.



NOTE:

1. FOR ALL MINIMUM CLEARANCES LOCAL CODES OR JURISDICTIONS MAY PREVAIL.

SURFACE	CLEARANCE		OPERATING CLEARANCE
	SERVICE WITH CONDUCTIVE BARRIER	SERVICE WITH NONCONDUCTIVE BARRIER	
FRONT	48 [1219mm]	36 [914mm]	18 [457mm]
LEFT	48 [1219mm]	42 [1067mm]	18 [457mm]
BACK W/O ECON	48 [1219mm]	42 [1067mm]	18 [457mm]
BACK W/ECON	36 [914mm]	36 [914mm]	18 [457mm]
RIGHT	36 [914mm]	36 [914mm]	18 [457mm]
TOP	72 [1829mm]	72 [1829mm]	72 [1829mm]

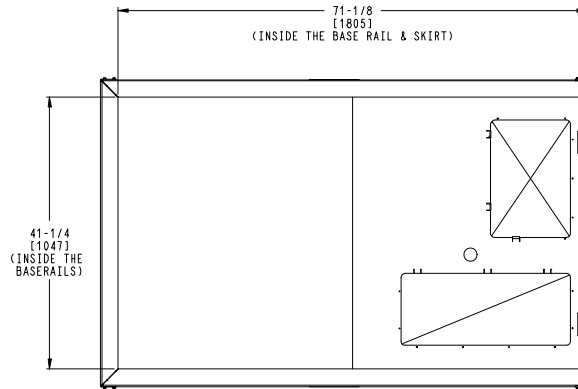
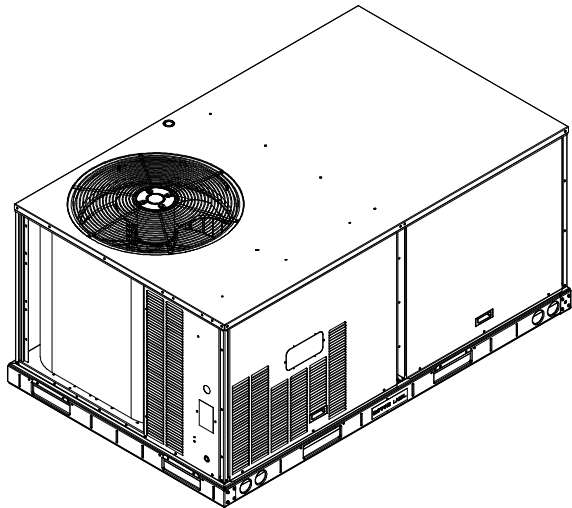
ITC CLASSIFICATION U.S. ECCN:NSR	SHEET 2 OF 3	DATE 08/15/19	SUPERCEDES -	50GCO 04-06 SINGLE PACKAGE HEAT PUMP	48TC003351	REV -
-------------------------------------	-----------------	------------------	-----------------	--------------------------------------	------------	----------

# Certified Drawing for RTU - 7

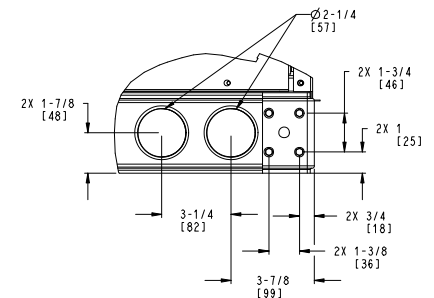
Project: BCF - Cape Coral, FL #1450(2301 Del Prado Blvd S)  
 Prepared By:

04/24/2023  
 03:45PM

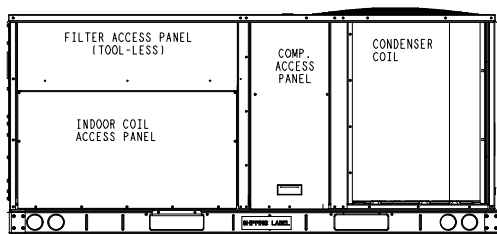
THIS DOCUMENT IS THE PROPERTY OF UTC CLIMATE, CONTROLS & SECURITY AND IS DELIVERED UPON THE EXPRESS CONDITION THAT THE CONTENTS WILL NOT BE DISCLOSED OR USED WITHOUT WRITTEN CONSENT.
 SUBMISSION OF THESE DRAWINGS OR DOCUMENTS DOES NOT CONSTITUTE PART PERFORMANCE OR ACCEPTANCE OF CONTRACT.



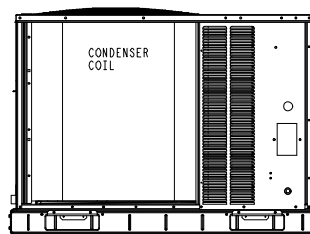
INSIDE BASERAIL DIMENSIONS  
**BOTTOM**



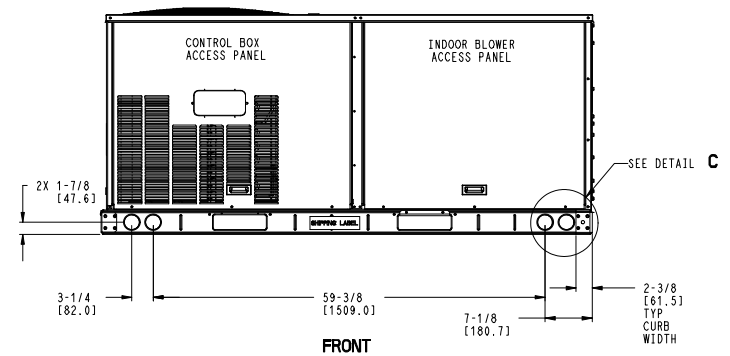
DETAIL **C**  
 TYP 4 PLCS



**BACK**



**LEFT**



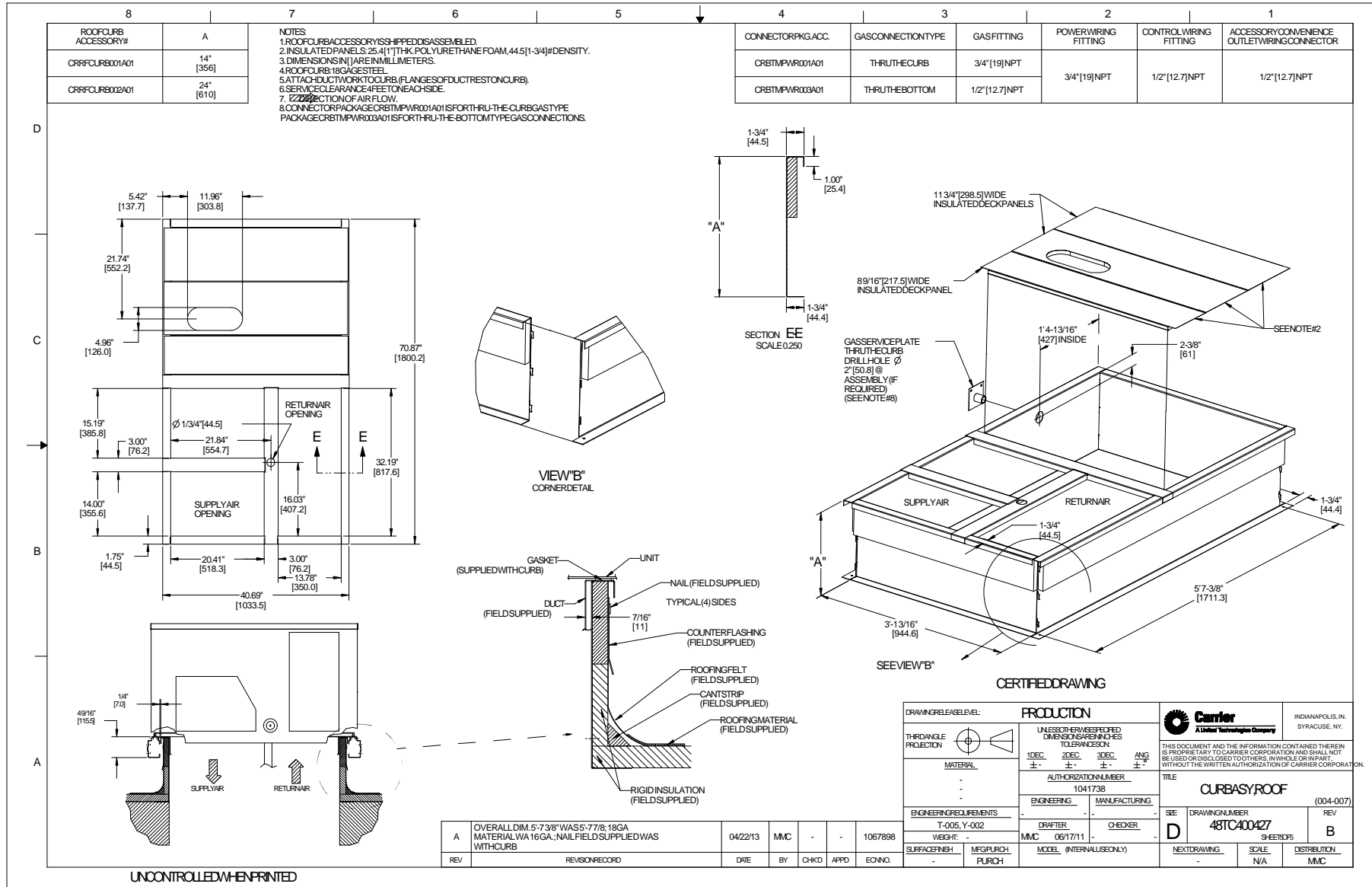
**FRONT**

ITC CLASSIFICATION	SHEET	DATE	SUPERCEDES	50GCQ 04-06 SINGLE PACKAGE HEAT PUMP	48TC003351	REV
U.S. ECCN: NSR	3 OF 3	08/15/19	-			-

# Certified Drawing for RTU - 7

Project: BCF - Cape Coral, FL #1450(2301 Del Prado Blvd S)  
 Prepared By:

04/24/2023  
 03:45PM



## Performance Summary For RTU - 7

Project: BCF - Cape Coral, FL #1450(2301 Del Prado Blvd S)  
 Prepared By:

04/24/2023  
 03:45PM

### Part Number:50GCQM04J3B6-3W4F0

ARI SEER:..... **16.20**

#### Base Unit Dimensions

Unit Length:..... 74.4 in  
 Unit Width:..... 46.6 in  
 Unit Height:..... 33.4 in

#### Operating Weight

Base Unit Weight:..... **475** lb  
 Condensate Overflow Switch:..... 5 lb  
 Direct Drive - EcoBlue - High Static:..... 3 lb  
 SystemVu Controls:..... 2 lb  
 Enthalpy Ultra Low Leak Econo w/Baro Relief:..... 37 lb  
 Hinged Panels and Unpowered Convenience Outlet:..... 9 lb  
 Non-Fused Disconnect and Thru-The-Base Connections:..... 9 lb

#### Accessories

14-inch Tall Roof Curb:..... 115 lb  
 Total Operating Weight:..... 655 lb

#### Unit

Unit Voltage-Phase-Hertz:..... 460-3-60  
 Air Discharge:..... Vertical  
 Fan Drive Type:..... Vane Axial  
 Actual Airflow:..... **900** CFM  
 Site Altitude:..... 0 ft

#### Cooling Performance

Condenser Entering Air DB:..... **95.0** F  
 Evaporator Entering Air DB:..... **76.7** F  
 Evaporator Entering Air WB:..... **65.8** F  
 Entering Air Enthalpy:..... 30.52 BTU/lb  
 Evaporator Leaving Air DB:..... 54.1 F  
 Evaporator Leaving Air WB:..... 53.3 F  
 Evaporator Leaving Air Enthalpy:..... 22.17 BTU/lb  
 Gross Cooling Capacity:..... 33.83 MBH  
 Gross Sensible Capacity:..... 21.99 MBH  
 Compressor Power Input:..... 2.35 kW  
 Coil Bypass Factor:..... 0.053

#### Heating Performance

Outdoor Ambient Temperature:..... 47.0 F  
 Entering Air Indoor Coil DB:..... 70.0 F  
 Leaving Air Indoor Coil DB:..... 103.3 F  
 Total Heating Capacity:..... 32.40 MBH  
 Integrated Heating Capacity:..... 32.40 MBH  
 Heating Power Input:..... 2.51 kW  
 High Temperature COP:..... 3.80  
 Low Temperature COP:..... 2.40  
 HSPF:..... 8.8

#### Supply Fan

External Static Pressure:..... **0.80** in wg  
 Options / Accessories Static Pressure  
 Economizer:..... 0.02 in wg  
 Application External Static (ESP + Unit Opts/Acc.):..... 0.82 in wg  
 Fan RPM:..... 1689  
 Fan Power:..... 0.35 BHP

NOTE:..... Selected IFM RPM Range: 1058 - 2490

## Performance Summary For RTU - 7

Project: BCF - Cape Coral, FL #1450(2301 Del Prado Blvd S)  
 Prepared By:

04/24/2023  
 03:45PM

**Selection includes construction throwaway filter into the base fan curve. This filter is not MERV Rated.**

### Electrical Data

Voltage Range:.....	414 - 506
Compressor #1 RLA:.....	5.8
Compressor #1 LRA:.....	38
Indoor Fan Motor Type:.....	HIGH
<b>Indoor Fan Motor FLA (Total):.....</b>	<b>1.5</b>
Power Supply MCA:.....	10
Power Supply MOCP (Fuse or HACR):.....	15
Disconnect Size FLA:.....	9
Disconnect Size LRA:.....	42
Electrical Convenience Outlet:.....	None
Outdoor Fan [Qty / FLA (ea)]:.....	1 / 0.8

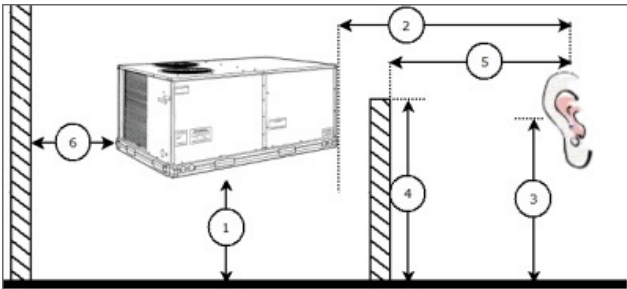
**Control Panel SCCR: 5kA RMS at Rated Symmetrical Voltage**

### Acoustics

Sound Power Levels, db re 10E-12 Watts

	Discharge	Inlet	Outdoor
63 Hz	91.9	84.2	81.8
125 Hz	82.7	77.0	81.8
250 Hz	73.5	68.3	77.0
500 Hz	66.3	60.0	72.6
1000 Hz	63.5	61.3	69.9
2000 Hz	60.3	52.8	64.6
4000 Hz	57.1	46.9	59.3
8000 Hz	56.6	41.7	55.6
A-Weighted	72.6	67.0	75.4

### Advanced Acoustics



#### Advanced Acoustics Parameters

1. Unit height above ground:.....	30.0 ft
2. Horizontal distance from unit to receiver:.....	50.0 ft
3. Receiver height above ground:.....	5.7 ft
4. Height of obstruction:.....	0.0 ft
5. Horizontal distance from obstruction to receiver:.....	0.0 ft
6. Horizontal distance from unit to obstruction:.....	0.0 ft

### Detailed Acoustics Information

## Performance Summary For RTU - 7

Project: BCF - Cape Coral, FL #1450(2301 Del Prado Blvd S)  
 Prepared By:

04/24/2023  
 03:45PM

Octave Band Center Freq. Hz	63	125	250	500	1k	2k	4k	8k	Overall
A	81.8	81.8	77.0	72.6	69.9	64.6	59.3	55.6	85.9 Lw
B	55.6	65.7	68.4	69.4	69.9	65.8	60.3	54.5	75.4 LwA
C	49.4	49.4	44.6	40.2	37.5	32.2	26.9	23.2	53.5 Lp
D	23.2	33.3	36.0	37.0	37.5	33.4	27.9	22.1	43.0 LpA

**Legend**

- A Sound Power Levels at Unit's Acoustic Center, Lw
- B A-Weighted Sound Power Levels at Unit's Acoustic Center, LwA
- C Sound Pressure Levels at Specific Distance from Unit, Lp
- D A-Weighted Sound Pressure Levels at Specific Distance from Unit, LpA

Calculation methods used in this program are patterned after the ASHRAE Guide; other ASHRAE Publications and the AHRI Acoustical Standards. While a very significant effort has been made to insure the technical accuracy of this program, it is assumed that the user is knowledgeable in the art of system sound estimation and is aware of the tolerances involved in real world acoustical estimation. This program makes certain assumptions as to the dominant sound sources and sound paths which may not always be appropriate to the real system being estimated. Because of this, no assurances can be offered that this software will always generate an accurate sound prediction from user supplied input data. If in doubt about the estimation of expected sound levels in a space, an Acoustical Engineer or a person with sound prediction expertise should be consulted.

