

Report By:

National TAB
1329 E. KEMPER ROAD
SUITE 4210
CINCINNATI, OH 45246



Report: Burlington (Ft. Myers, FL)

Function: Test, Adjust, & Balance

Date: 10/23/2023

PROJECT

Burlington (Ft. Myers, FL)

400 Del Prado Blvd S

Ft. Myers, FL 33990

Client

Air Temp Inc

52 Riley Road #260

Celebration, FL 34747

National TAB

Project: Burlington (Ft. Myers, FL)

Table Of Contents

Section	Page #
Certification	3
Equipment Calibration	4
Abbreviations	5
GRD Layout	6
AHU/RTU	8
FAN - Exhaust	20



CERTIFICATION

PROJECT: Burlington (Ft. Myers, FL)

The data presented in this report is a record of system measurements and final adjustments that have been obtained in accordance with the current edition of the NEBB *Procedural Standards for Testing, Adjusting, and Balancing of Environmental Systems*. Any variances from design quantities, which exceed NEBB tolerances, are noted in the Test-Adjust-Balance Report Project Summary.

The air distribution system has been tested and balanced and final adjustments have been made in accordance with NEBB standards and the project specifications.

NEBB TAB FIRM: National TAB-Southeast

REGISTRATION NO: 3755

CERTIFIED BY: J. Scott Springer 23312

DATE: 10/23/2023

The hydronic distribution system has been tested and balanced and final adjustments have been made in accordance with NEBB standards and the project specifications.

NEBB TAB FIRM: National TAB-Southeast

REGISTRATION NO: 3086

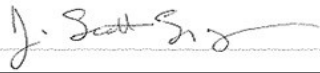
CERTIFIED BY: J. Scott Springer 23312

DATE:

Submitted and Certified by:

NEBB TAB FIRM: National TAB-Southeast

TAB PROFESSIONAL: J. Scott Springer

SIGNATURE: 

REGISTRATION NO: 3755 (NTAB) / 23312

CERTIFICATION EXP: 12/31/2023





National TAB

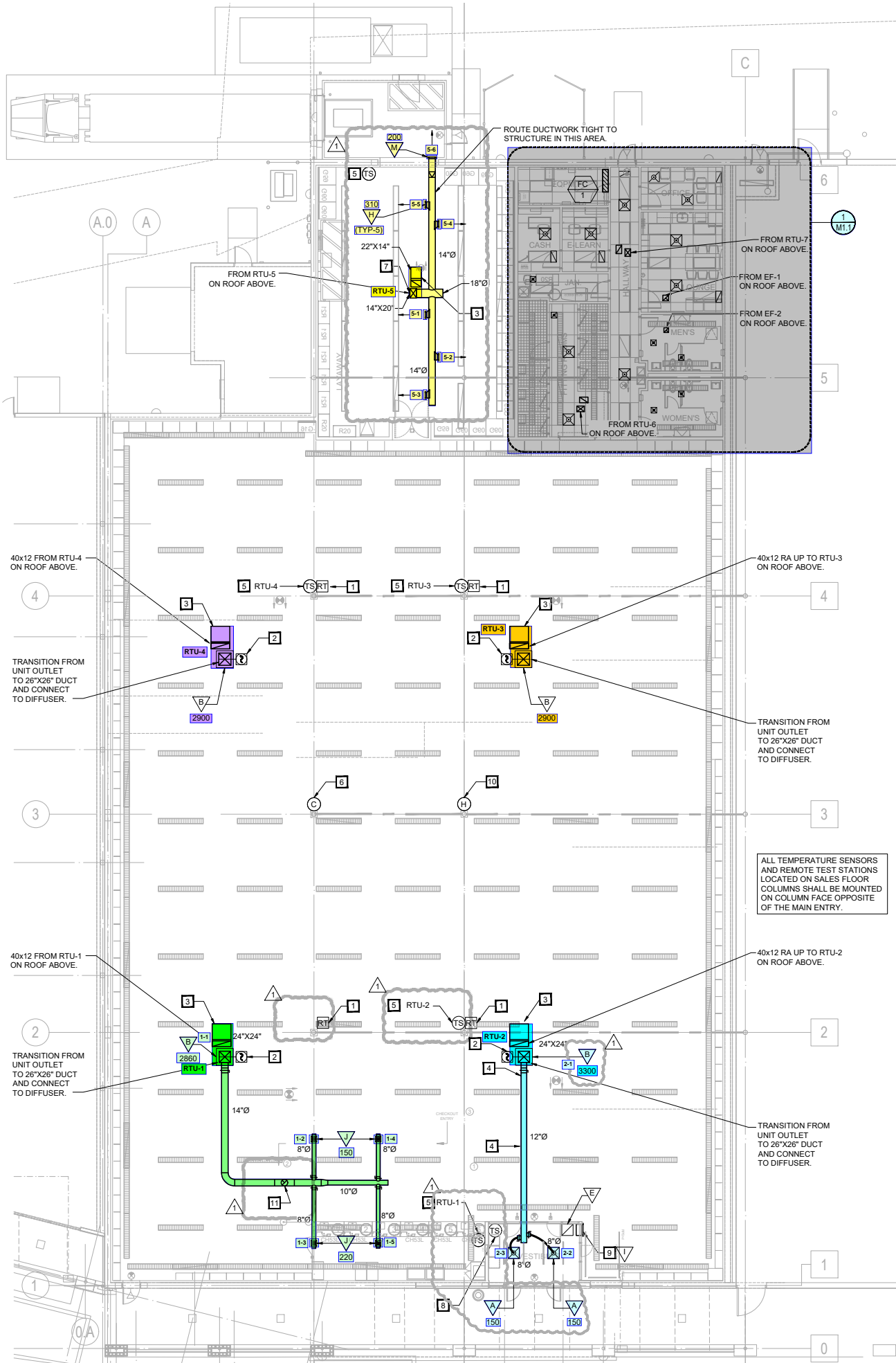
Testing, Adjusting, and Balancing Equipment



Function		Range	Minimum Accuracy	Instrument Information	Calibration Date	Date Due
AIR	AIR PRESSURE	0 in wg to 10 in wg	2% +/- 0.001 in wg	TSI Alnor EBT 731 S/N EBT732044025	11/17/2022	11/17/2023
	AIR VELOCITY INSTRUMENT	50 fpm to 3900 fpm	+/- 5 % +/- 7 fpm	TSI Alnor EBT 731 S/N EBT732044025	11/17/2022	11/17/2023
	DIRECT HOOD READING	100 cfm to 2000 cfm	+/- 5 % +/- 7 cfm	TSI Alnor EBT 731 S/N EBT732044025	11/17/2022	11/17/2023
TEMPERATURE	AIR METER	-20 F to 240 F	+/- .5 % 2 F	Cooper ATKINS - SRH77A S/N 071118034	6/6/2023	6/6/2024
	AIR PROBE	-20 F to 240 F	+/- .5 % 2 F	Cooper ATKINS - PD1388 7-6 S/N 5028	6/6/2023	6/6/2024
	IMMERSION METER	-20 F to 240 F	+/- .5 % 2 F	Cooper ATKINS - SRH77A S/N 071118034	6/6/2023	6/6/2024
	IMMERSION PROBE	-20 F to 240 F	+/- .5 % 2 F	Cooper ATKINS - PD1388 7-6 S/N 1075	6/6/2023	6/6/2024
	CONTACT METER	-20 F to 240 F	+/- .5 % 2 F	Cooper ATKINS - SRH77A S/N 071118034	6/6/2023	6/6/2024
	CONTACT PROBE	-20 F to 240 F	+/- .5 % 2 F	Cooper ATKINS - PD1388 7-6 S/N 4011	6/6/2023	6/6/2024
HUMIDITY	HUMIDITY PROBE	10 % RH to 90 % RH	3% of reading	Cooper ATKINS - SRH77A S/N 071118034	6/6/2023	6/6/2024
ELECTRICAL	VOLTAGE MEASUREMENT	0 VAC to 600 VAC	2 % reading +/- 5 digits	Fluke 373 True RMS, S/N: 33290686	6/1/2023	6/1/2024
	AMPERAGE MEASUREMENT	0 Amperers to 100 Amperes	2 % reading +/- 5 digits	Fluke 373 True RMS, S/N: 33290686	6/1/2023	6/1/2024
ROTATION	ROTATION MEASUREMENT	60 rpm to 5000 rpm	2 % reading 2 rpm	SHIMPO DT-207LR S/N: D1530081R	6/1/2023	6/1/2024
HYDRONIC	PRESSURE MEASUREMENT	-30 in Hg to 200 psi	±2% of reading +/- 1 psi	Alnor HM675 S/N: 72214041	5/2023	5/2024
	DIFFERENTIAL PRESSURE MEASUREMENT	0 psi - 80 psi	±2% of reading +/- 1 psi	Alnor HM675 S/N: 72214041	5/2023	5/2024

Abbreviation List

A = Area (ft ²)	S.F. = Service Factor
AHU = Air Handling Unit	SF = Supply Fan
A _k = Effective Area	SP = Static Pressure
BHP = Brake Horsepower (IP) HP	SR = Supply Register
Btu = British Thermal Unit	T = Temperature
Btu/h = Btuh = BTUH = BTU/Hour	T _{ma} = Mixed Air Temperature
CL = Center Distance (used in belt formula)	T _{oa} = Outside Air Temperature
CD = Ceiling Diffuser	T _{ra} = Return Air Temperature
CF = Correction Factor	H = Head (in wc, ft wc, psi)
CFM = Volumetric Flow: Cubic Feet Per Minute	h = Enthalpy
CO ₂ = Carbon Dioxide	HP = Horsepower
CO = Carbon Monoxide	hr = Hour
C _v = Flow Constant	K _v = Flow constant (SI)
d = Diameter (in.) IP	kW = Kilowatt = 1000 Watts
Δ = Difference or Change (Final - Initial)	LAT = Leaving Air Temperature
DB = Dry Bulb	lb = Pounds
EA = Exhaust Air	LWT = Leaving Water Temperature
EAT = Entering Air Temperature	ma = Mixed Air
EF = Exhaust Fan	MIN = Minimum
Eff = Efficiency	MAX = Maximum
EG = Exhaust Grille	N/A = Not Applicable
ESP = External Static Pressure	NA = No Access
EWT = Entering Water Temperature	NL = Not Listed
°F = Degrees Fahrenheit, °F	NPSHA = Net Positive Suction Head Available
FPB = Fan Powered Box	NS = Not Specified
FLA = Full Load Amps	OA = Outside Air
fpm = Feet per Minute (fpm)	OAT = Outside Air Temperature
ft = Foot	PD = Sheave Pitch Diameter
gal = Gallons	P.D. = Pressure Drop
GPM = Gallons Per Minute (GPM)	PF = Power Factor
h = Enthalpy (BTU/lb dry air)	SG = Supply Grille
P = Pressure	SR = Supply Register
ppm = parts per million	TP = Total Pressure
psi = Pounds Per Square Inch	T _{ra} = Return Air Temperature
psid = PSI Differential	TS = Tip Speed (fpm) IP, (m/s) SI
r = Radius (in)	TSP = Total Static Pressure
% _{ra} = % of Return Air	V = Velocity
RA = Return Air	VAV = Variable Air Volume
RAT = Return Air Temperature	VD = Volume Damper
RF = Return Fan	VFD = Variable Frequency Drive
RG = Return Grille	W = Watt
RH = Relative Humidity	WB = Wet Bulb
RPM = Revolutions Per Minute	wg = wc = water gauge = water column
RTU = Roof Top Unit	WHP = Water Horsepower (IP)
SA = Supply Air	ω = Humidity Ratio



National TAB

Project: Burlington (Ft. Myers, FL)
System/Unit: AHU/RTU



Asset: RTU-1

AREA:SALES

Unit Data		
	Design	Actual
MFG	NA	CARRIER
Serial Num	-	5122P12031
Model Num	NA	50LCEA12J2C6A4R4F0
Configuration	VERTICAL	VERTICAL
Num OA Filters 1	-	2
OA Filter Size 1	-	22.5X25.5
Num PreFilter 1	-	6
PreFilter Size 1	-	18X24X2

Test Data		
	Design	Actual
SF CFM	3600	3608
SF RPM	591	572
RA CFM	2770	2854
OA CFM	830	754
RL Voltage	460	499/497/497
RL Amperage	3.8	1.7/1.7/1.6
OA Damper Position	-	40%
Brake Horse Power	1.21	1.27

Motor Data		
	Design	Actual
Motor MFG	-	MARATHON
Frame	-	56HZ
Horsepower	-	2.9
Motor Rpm	-	1735
Phase	3	3
Rated Voltage	460	208-230/460
Rated Amperage	3.8	8.1-7.6/3.8
Service Factor	-	1.15

Performance Data		
	Design	Actual
MA Plenum SP	-	-0.48"
Fan Suction SP	-	-0.75"
Fan Discharge SP	-	0.26"
Total ESP	0.60	0.74"
Fan Total SP	0.68	1.01"

Drive Data		
	Design	Actual
Motor Sheave Size	-	VP40
Motor Bore Size	-	7/8"
Motor Sheave SetPt	-	5.0 TURNS OUT
Fan Sheave Size	-	AK84
Fan Sheave Bore	-	1 3/16"
Belt CL Distance	-	20.25"
Num of Belts	-	1
Belt Size	-	AX56

Completed By: Stephen Tassinaro on 10/18/2023

National TAB

Project: Burlington (Ft. Myers, FL)

AHU/RTU



Diffuser Supply (GRD)

RTU-1/SALES

Asset							
Asset Name	Location	Type	Size	DESIGN CFM	CFM(1)	FINAL CFM	% to design
1-1	SALES	B	40X40	2860	3109	2930	102.4
1-2	CHECKOUT	J	8	150	119	136	90.7
1-3	CHECKOUT	J	8	220	138	203	92.3
1-4	CHECKOUT	J	8	150	117	138	92.0
1-5	CHECKOUT	J	8	220	141	201	91.4
Total				3600	3624	3608	100.22%

Completed By: Stephen Tassinaro on 10/19/2023

National TAB

Project: Burlington (Ft. Myers, FL)

System/Unit: AHU/RTU



Asset: RTU-2

AREA:SALES

Unit Data		
	Design	Actual
MFG	NA	CARRIER
Serial Num	-	4322P11049
Model Num	NA	50LCEA12J2C6A4RF0
Configuration	VERTICAL	VERTICAL
Num OA Filters 1	-	1
OA Filter Size 1	-	22.5X25.5
Num PreFilter 1	-	6
PreFilter Size 1	-	18X24X2

Test Data		
	Design	Actual
SF CFM	3600	3526
SF RPM	591	576
RA CFM	2770	2766
OA CFM	830	760
RL Voltage	460	498/498/500
RL Amperage	3.8	1.6/1.7/1.6
OA Damper Position	-	40%
Brake Horse Power	1.21	1.24

Motor Data		
	Design	Actual
Motor MFG	-	MARATHON
Frame	-	56HZ
Horsepower	-	2.9
Motor Rpm	-	1735
Phase	3	3
Rated Voltage	460	208-230/460
Rated Amperage	3.8	8.1-7.6/3.8
Service Factor	-	1.15

Performance Data		
	Design	Actual
MA Plenum SP	-	-0.44"
Fan Suction SP	-	-0.67"
Fan Discharge SP	-	0.23"
Total ESP	0.60	0.67"
Fan Total SP	0.68	0.90"

Drive Data		
	Design	Actual
Motor Sheave Size	-	VP40
Motor Bore Size	-	7/8"
Motor Sheave SetPt	-	5.0 TURNS OUT
Fan Sheave Size	-	AK84
Fan Sheave Bore	-	1 3/16"
Belt CL Distance	-	20.25"
Num of Belts	-	1
Belt Size	-	AX56

Completed By: Stephen Tassinaro on 10/19/2023

National TAB

Project: Burlington (Ft. Myers, FL)

AHU/RTU



Diffuser Supply (GRD)

RTU-2/SALES

Asset							
Asset Name	Location	Type	Size	DESIGN CFM	CFM(1)	FINAL CFM	% to design
2-1	SALES	B	40X40	3300	3143	3228	97.8
2-2	VESTIBULE	A	8	150	201	136	90.7
2-3	VESTIBULE	A	8	150	186	162	108.0
Total				3600	3530	3526	97.94%

Completed By: Stephen Tassinaro on 10/19/2023

National TAB

Project: Burlington (Ft. Myers, FL)

System/Unit: AHU/RTU



Asset: RTU-3

AREA:SALES

Unit Data		
	Design	Actual
MFG	NA	YORK
Serial Num	-	N2F2537699
Model Num	NA	ZJ102E09R4D5EAA1R2
Configuration	VERTICAL	VERTICAL
Num OA Filters 1	-	1
OA Filter Size 1	-	29X21
Num PreFilter 1	-	4
PreFilter Size 1	-	24X20X2

Test Data		
	Design	Actual
SF CFM	2900	2789
SF RPM	892	945
RA CFM	2240	2169
OA CFM	660	620
RL Voltage	460	497/499/497
RL Amperage	4.7	3.5/3.6/3.6
OA Damper Position	-	10%
Brake Horse Power	3.45	2.52

Motor Data		
	Design	Actual
Motor MFG	-	BALDOR RELIANCE
Frame	-	56HZ
Horsepower	3.00	3.0
Motor Rpm	-	1750
Phase	3	3
Rated Voltage	460	208-230/460
Rated Amperage	4.7	8.3-8.2/4.1
Service Factor	-	1.15

Performance Data		
	Design	Actual
MA Plenum SP	-	-0.68"
Fan Suction SP	-	-1.02"
Fan Discharge SP	-	0.38"
Total ESP	0.70	1.06"
Fan Total SP	-	1.40"

Drive Data		
	Design	Actual
Motor Sheave Size	-	VM50
Motor Bore Size	-	7/8"
Motor Sheave SetPt	-	3.0 TURNS OUT
Fan Sheave Size	-	7.25"
Fan Sheave Bore	-	1.0"
Belt CL Distance	-	19.0"
Num of Belts	-	1
Belt Size	-	A54

Completed By: Stephen Tassinaro on 10/18/2023

National TAB

Project: Burlington (Ft. Myers, FL)

System/Unit: AHU/RTU



Asset: RTU-4

AREA:SALES

Unit Data		
	Design	Actual
MFG	NA	YORK
Serial Num	-	N2F2537700
Model Num	NA	ZJ102E09R4D5EAA1R2
Configuration	VERTICAL	VERTICAL
Num OA Filters 1	-	1
OA Filter Size 1	-	29X21
Num PreFilter 1	-	4
PreFilter Size 1	-	24X20X2

Test Data		
	Design	Actual
SF CFM	2900	3014
SF RPM	892	974
RA CFM	2240	2415
OA CFM	660	599
RL Voltage	460	496/496/499
RL Amperage	4.7	3.1/3.0/3.7
OA Damper Position	-	19%
Brake Horse Power	3.45	2.39

Motor Data		
	Design	Actual
Motor MFG	-	BALDOR RELIANCE
Frame	-	56HZ
Horsepower	3.00	3.0
Motor Rpm	-	1750
Phase	3	3
Rated Voltage	460	208-230/460
Rated Amperage	4.7	8.3-8.2/4.1
Service Factor	-	1.15

Performance Data		
	Design	Actual
MA Plenum SP	-	-0.68"
Fan Suction SP	-	-1.04"
Fan Discharge SP	-	0.45"
Total ESP	0.70	1.13"
Fan Total SP	-	1.49"

Drive Data		
	Design	Actual
Motor Sheave Size	-	VM50
Motor Bore Size	-	7/8"
Motor Sheave SetPt	-	3.0 TURNS OUT
Fan Sheave Size	-	7.25"
Fan Sheave Bore	-	1.0"
Belt CL Distance	-	19.0"
Num of Belts	-	1
Belt Size	-	A54

Completed By: Stephen Tassinaro on 10/18/2023

National TAB

Project: Burlington (Ft. Myers, FL)

System/Unit: AHU/RTU



Asset: RTU-5

AREA:WOMENS RR

Unit Data		
	Design	Actual
MFG	NA	CARRIER
Serial Num	-	1323C10407
Model Num	NA	50GCQM06J3B6A3W4F0
Configuration	VERTICAL	VERTICAL
Num OA Filters 1	-	1
OA Filter Size 1	-	28.25X14
Num PreFilter 1	-	4
PreFilter Size 1	-	16X16X2

Motor Data		
	Design	Actual
Motor MFG	-	N/L
Frame	-	N/L
Horsepower	-	N/L
Motor Rpm	-	N/L
Phase	3	3
Rated Voltage	460	460
Rated Amperage	2.9	2.9
Service Factor	-	N/L

Test Data		
	Design	Actual
SF CFM	1750	1772
RA CFM	1485	1501
OA CFM	265	271
RL Voltage	460	499/497/497
RL Amperage	2.9	1.3/1.4/1.3
OA Damper Position	-	20%

Performance Data		
	Design	Actual
MA Plenum SP	-	-0.61"
Fan Suction SP	-	-0.82"
Fan Discharge SP	-	0.81"
Total ESP	0.80	1.42"
Fan Total SP	0.89	1.63"

Completed By: Stephen Tassinaro on 10/18/2023

National TAB
 Project: Burlington (Ft. Myers, FL)
AHU/RTU



Diffuser Supply (GRD)

RTU-5/WOMENS RR

Asset							
Asset Name	Location	Type	Size	DESIGN CFM	CFM(1)	FINAL CFM	% to design
5-1	LAYAWAY	H	12X8	310	270	314	101.3
5-2	LAYAWAY	H	12X8	310	359	304	98.1
5-3	LAYAWAY	H	12X8	310	350	336	108.4
5-4	LAYAWAY	H	12X8	310	269	300	96.8
5-5	LAYAWAY	H	12X8	310	412	316	101.9
5-6	LAYAWAY	M	12X4	200	138	202	101.0
Total				1750	1798	1772	101.26%

Completed By: Stephen Tassinaro on 10/18/2023

National TAB

Project: Burlington (Ft. Myers, FL)

System/Unit: AHU/RTU



Asset: RTU-6

AREA:LAYAWAY

Unit Data		
	Design	Actual
MFG	NA	CARRIER
Serial Num	-	1423C08955
Model Num	NA	50GCQM04J3B6A3W4F0
Configuration	VERTICAL	VERTICAL
Num OA Filters 1	-	1
OA Filter Size 1	-	28X14.25
Num PreFilter 1	-	2
PreFilter Size 1	-	16X25X2

Motor Data		
	Design	Actual
Motor MFG	-	N/L
Frame	-	N/L
Horsepower	-	N/L
Motor Rpm	-	N/L
Phase	3	3
Rated Voltage	460	460
Rated Amperage	1.5	1.5
Service Factor	-	N/L

Test Data		
	Design	Actual
SF CFM	900	952
RA CFM	790	833
OA CFM	110	119
RL Voltage	460	500/498/498
RL Amperage	1.5	0.5/0.6/0.5
OA Damper Position	-	15%

Performance Data		
	Design	Actual
MA Plenum SP	-	-0.23"
Fan Suction SP	-	-0.34"
Fan Discharge SP	-	0.33"
Total ESP	0.80	0.56"
Fan Total SP	0.82	0.67"

Completed By: Stephen Tassinaro on 10/18/2023

National TAB

Project: Burlington (Ft. Myers, FL)

AHU/RTU



Diffuser Supply (GRD)

RTU-6/LAYAWAY

Asset							
Asset Name	Location	Type	Size	DESIGN CFM	CFM(1)	FINAL CFM	% to design
6-1	FITTING RM	C	10	250	388	274	109.6
6-2	FITTING RM	C	10	250	384	271	108.4
6-3	HALLWAY	C	10	200	350	218	109.0
6-4	MENS RR	J	6	100	131	98	98.0
6-5	WOMENS RR	J	6	100	123	91	91.0
Total				900	1376	952	105.78%

Completed By: Stephen Tassinaro on 10/18/2023

National TAB

Project: Burlington (Ft. Myers, FL)

System/Unit: AHU/RTU



Asset: RTU-7

AREA:OFFICES

Unit Data		
	Design	Actual
MFG	NA	CARRIER
Serial Num	-	1623C09782
Model Num	NA	50GCQM04J3B6A3W4F0
Configuration	VERTICAL	VERTICAL
Num OA Filters 1	-	1
OA Filter Size 1	-	28X14.25
Num PreFilter 1	-	2
PreFilter Size 1	-	16X25X2

Motor Data		
	Design	Actual
Motor MFG	-	N/L
Frame	-	N/L
Horsepower	-	N/L
Motor Rpm	-	N/L
Phase	3	3
Rated Voltage	460	460
Rated Amperage	1.5	1.5
Service Factor	-	N/L

Test Data		
	Design	Actual
SF CFM	900	882
RA CFM	790	780
OA CFM	110	102
RL Voltage	460	499/498/500
RL Amperage	1.5	0.4/0.5/0.4
OA Damper Position	-	12%

Performance Data		
	Design	Actual
MA Plenum SP	-	-0.15"
Fan Suction SP	-	-0.24"
Fan Discharge SP	-	0.30"
Total ESP	0.80	0.45"
Fan Total SP	0.82	0.54"

Completed By: Stephen Tassinaro on 10/18/2023

National TAB

Project: Burlington (Ft. Myers, FL)

AHU/RTU



Diffuser Supply (GRD)

RTU-7/OFFICES

Asset							
Asset Name	Location	Type	Size	DESIGN CFM	CFM(1)	FINAL CFM	% to design
7-1	E-LEARN	C	8	150	180	146	97.3
7-2	CASH	C	8	100	175	101	101.0
7-3	HALLWAY	C	6	100	149	98	98.0
7-4	LOUNGE	C	10	200	322	201	100.5
7-5	LOUNGE	C	8	150	250	148	98.7
7-6	OFFICE	C	10	200	408	188	94.0
Total				900	1484	882	98%

Completed By: Stephen Tassinaro on 10/18/2023

National TAB

Project: Burlington (Ft. Myers, FL)

System/Unit: FAN - Exhaust



Asset: EF-1

AREA: LOUNGE

Unit Data		
	Design	Actual
MFG	NA	COOK
Model Num	NA	101 ACE 101C17DEC
Serial Num	-	047PK57202- 00/0000701
Type	CRE DNBLAST	CENTRIFUGAL

Test Data		
	Design	Actual
CFM	600	652
RL Voltage	-	115
RL Amperage	-	INACCESSIBLE
Total ESP	0.35	0.26"

Motor Data		
	Design	Actual
Motor MFG	-	COOK
Frame	-	N/L
Horsepower	0.25	0.25
Motor Rpm	1725	1725
Phase	1	1
Voltage (rated)	115	120
Amperage (rated)	-	3.4
Service Factor	-	N/L

Completed By: Stephen Tassinaro on 10/19/2023

National TAB

Project: Burlington (Ft. Myers, FL)

FAN - Exhaust



Diffuser Ret/Exh (GRD)

EF-1/LOUNGE

Asset								
Asset Name	Type	Size	DESIGN CFM	AK	CFM(1)	CFM(2)	FINAL CFM	% to design
E1-1	E	22X22	600	1	652	652	652	108.7
Total			600		652	652	652	108.67%

Completed By: Stephen Tassinaro on 10/17/2023

National TAB

Project: Burlington (Ft. Myers, FL)

System/Unit: FAN - Exhaust



Asset: EF-2

AREA: LOUNGE

Unit Data		
	Design	Actual
MFG	NA	COOK
Model Num	NA	101 ACE 101C15D
Serial Num	-	047PK57202- 00/0002101
Type	CRE DNBLAST	CENTRIFUGAL

Test Data		
	Design	Actual
CFM	460	530
RL Voltage	-	115
RL Amperage	-	INACCESSIBLE
Total ESP	0.50	0.12"

Motor Data		
	Design	Actual
Motor MFG	-	US MOTORS
Frame	-	48Y
Horsepower	0.125	1/8
Motor Rpm	1550	1600
Phase	1	1
Voltage (rated)	115	115
Amperage (rated)	-	1.7
Service Factor	-	N/L

Completed By: Stephen Tassinaro on 10/19/2023

Notes:

NO SPEED CONTROLLER TO REDUCE TOTAL TO DESIGN. NOT EXPECTED TO CAUSE COMFORT ISSUES. BATHROOMS AND JANITOR ROOM REMAIN SLIGHTLY NEGATIVE AS PER DESIGN. FITTING ROOMS REMAIN POSITIVE PER DESIGN.

Written By: Stephen Tassinaro on 10/19/2023

National TAB

Project: Burlington (Ft. Myers, FL)

FAN - Exhaust



Diffuser Ret/Exh (GRD)

EF-2/LOUNGE

Asset								
Asset Name	Type	Size	DESIGN CFM	AK	CFM(1)	CFM(2)	FINAL CFM	% to design
E2-1	F	10X10	140	1	192	159	169	120.7
E2-2	F	10X10	140	1	161	180	150	107.1
E2-3	F	10X10	130	1	131	136	142	109.2
E2-4	F	10X10	50	1	53	59	69	138.0
Total			460		537	534	530	115.22%

Completed By: Stephen Tassinaro on 10/18/2023